



## 5, 7, 11 Blade Reel Mower for Reelmaster 5500 and 6000

Model No. 03860—200000001 and Up

Model No. 03861—200000001 and Up

Model No. 03862—200000001 and Up

### Parts Catalog

---

#### Ordering Replacement Parts

To order replacement parts, please supply: the part number, the quantity, and the description of each part desired.

#### Understanding Reference Numbers

Each identified part in an illustration has a reference number. The reference number for a part also appears in the parts list, along with other information about the part.

This catalog uses two special reference number formats, one to indicate parts in a service assembly and another to indicate the quantity of a given part in an illustration.

#### Service Assembly Reference Numbers

Parts in service assemblies have reference numbers in the form **a:b**. The **a** represents the reference number of the entire service assembly and the **b** represents a sequential number unique to each part within the service assembly.

For example, a wheel assembly might be identified by reference number **6**, the tire by **6:1**, the valve by **6:2**, and the wheel by **6:3**. When you order the assembly identified by reference number **6**, you receive all parts identified by reference numbers **6:1**, **6:2**, and **6:3**. However, you may also order any part individually.

Reference numbers of this type appear in illustrations and in part lists.

#### Reference Numbers Indicating Quantity

In an illustration, if a reference number indicates more than one part, the reference number has the form **nX y**. The **n** represents the quantity of the part, the **X** is the multiplication symbol, and the **y** represents the reference number.

For example, in an illustration, the reference number **2X 37** means that two of the parts identified by reference number **37** are indicated.

## Contents

Description	Page	Description	Page
Reel and Frame Assembly .....	3	Shoulder Roller Assembly	
Rollers and Carrier Frame Assembly .....	5	No. 99-8675 (RM6000) .....	9
Roller Assembly No. 99-5749 .....	6	Guage Bar, Angle Indicator and	
Wiehle Roller Assembly No. 100-9906 .....	7	Handle Assembly .....	10
Shoulder Roller Assembly			
No. 100-9911 (RM5500) .....	8		

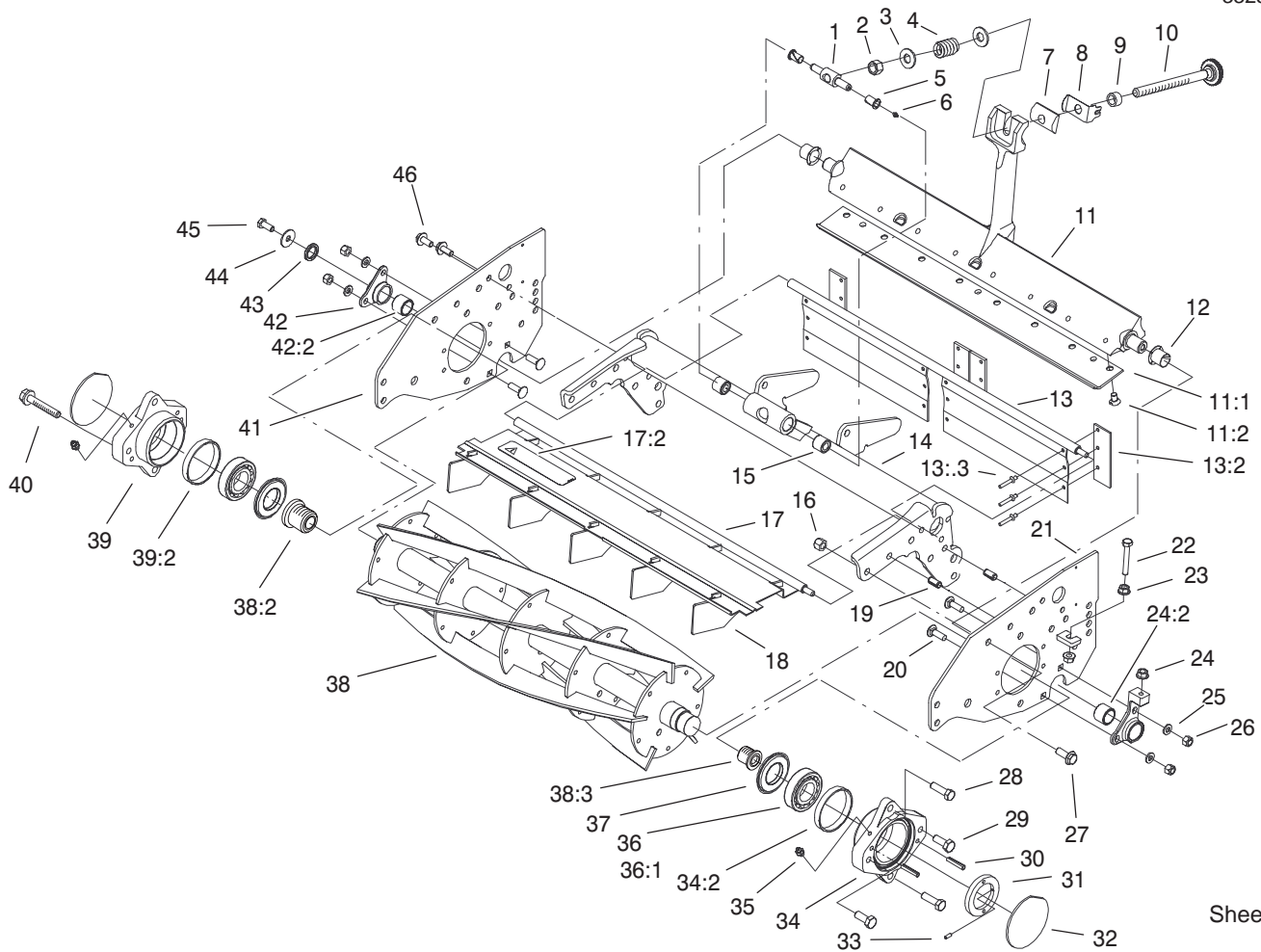
## Accessories

Description	Model / Part No.	Description	Model / Part No.
Basket Kit .....	03882	RM6000 Shoulder Scraper .....	99-8670-03
Hydraulic Motor .....	98-9998	RM5500 Shoulder Scraper .....	100-9913-03
Wiehle Scraper .....	100-9908-03	Rear Scraper Kit .....	100-9920

## Part Description Abbreviations

Part descriptions in this catalog may include the following abbreviations.

Abbreviation	Meaning	Abbreviation	Meaning
AR .....	as required	INC .....	incorporated
ASM .....	assembly	LH .....	left hand
CARR .....	carriage	NI .....	nylon insert
DEG .....	degrees	PPH .....	Phillips pan head
FH .....	flat head	PTH .....	Phillips truss head
GA .....	gauge	PTO .....	power take off
HF .....	hex flange	RH .....	right hand
HH .....	hex head	SFH .....	slotted fillister head
HHF .....	hex head flange	SHH .....	slotted hex head
HLH .....	hex lag head	SQH .....	square head
HJ .....	hex jam	SHWH .....	slotted hex washer head
HOC .....	height-of-cut	SPH .....	slotted pan head
HS .....	hex socket	SRH .....	slotted round head
HSBH .....	hex socket button head	STD .....	standard
HSFH .....	hex socket flat head	TAP .....	self tapping
HSH .....	hex socket head	TTH .....	Torx truss head
HWH .....	hex washer head	WH .....	wing head
HWHTF .....	hex washer head thread forming		



Sheet No.:2

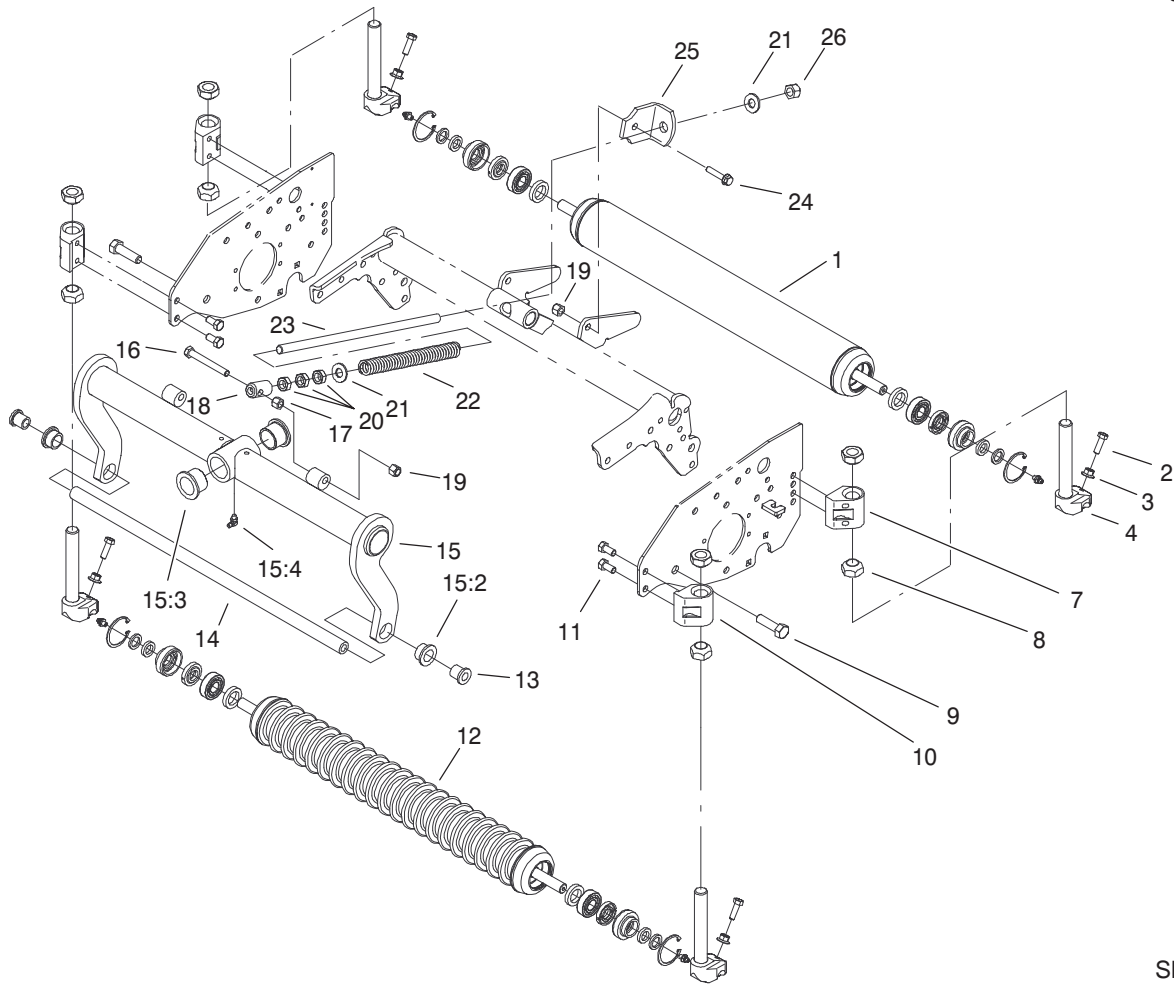
T-3466

## Reel and Frame Assembly

Ref. No.	Part No.	Qty.	Description	Ref. No.	Part No.	Qty.	Description
1	57-5260	1	Pivot-Bedbar	*	94-4584	1	Decal - Warning, Japan
2	3296-62	1	Nut-Lock NI	18	100-2287	5	Deflector-Shield, Grass
3	29-8910	2	Washer	19	32121-36	4	Pin-Spring
4	95-0772	1	Spring - Compression	20	3230-2	4	Screw-CARR
5	52-2890	2	Bushing-Nylon	21	100-2268-01	1	LH Sideplate ASM
6	302-18	1	Fitting-Grease	22	94-3489	1	Capscrew - HH
7	93-2892	1	Pivot-Bedbar, Main Adj	23	33004-00	3	Nut-HF
8	95-8752	1	Arm-Spring	24	100-3381	1	LH Pivot Hub ASM
9	93-2959	1	Spacer-Adjuster	24:2	93-7501	1	Bushing ASM
10	95-8877	1	Bedbar Adjuster ASM	25	3256-74	4	Washer-Flat
11	99-8698-01	1	Bedbar	26	3296-29	4	Nut-Lock, NI
11:1	98-3994	1	Bedknife	27	3234-11	8	Screw-HHF
*	93-9774	1	Bedknife-HOC, Low	28	323-7	4	Screw
11:2	57-4910	8	Screw	29	93-7522	2	Screw-HH
12	93-7502	2	Bushing-Flanged	30	32121-69	4	Pin - Spring
13	100-2289	1	Rear Grass Shield ASM	31	95-2793	1	Nut-Adjustment, Bearing
13:2	98-3999	4	Flap - Side	32	94-2703	1	Plug
13:3	700382	12	Rivet	33	100-4987	1	Screw-HS
14	100-4994-01	1	Frame-Reel	34	93-9795	1	LH Bearing Housing ASM
15	62-5510	2	Bushing-Rubber	34:2	93-9793	1	Ring - Seal
16	3296-39	12	Nut-Lock, NI	35	302-5	2	Fitting-Lube
17	100-9900	1	Front Grass Shield ASM				
17:2	93-6688	1	Decal - Danger				

\* Not Illustrated.



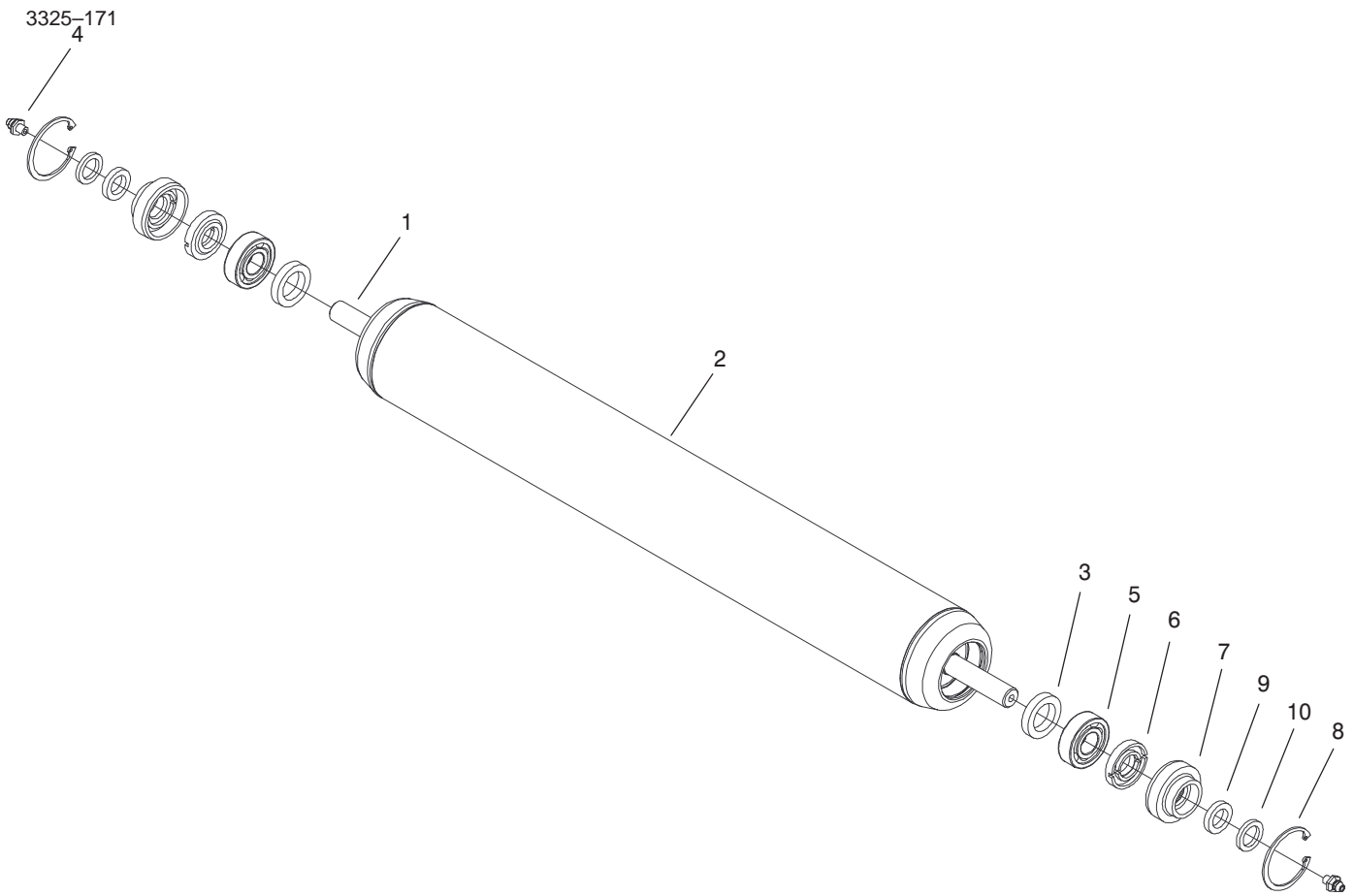


Sheet No.:3

## Rollers and Carrier Frame Assembly

Ref. No.	Part No.	Qty.	Description	Ref. No.	Part No.	Qty.	Description
1	99-5749	1	3" Dia Roller ASM	21	87-7270	2	Washer – Thrust
2	322-5	4	Screw-HH	22	92-7768	1	Spring-Compression
3	32128-20	4	Nut-HF	23	99-8661	1	Rod – Spring
4	100-2263	4	Support-Rod	24	3234-18	1	Capscrew
7	100-2262-01	2	Bracket-HOC, Rear	25	100-4992	1	Bracket-Spring
8	95-2789	8	Nut – Cone	26	3296-23	1	Nut-Lock, NI
*	95-2790	1	Nut – Cone, Tall				
9	325-7	2	Screw-HH				
10	100-2261-01	2	Bracket-HOC, Front				
11	323-4	8	Screw-HH				
12	100-9906	1	Wiehle Roller ASM				
*	100-9911	1	Shoulder Roller ASM (RM5500)				
*	99-8675	1	Shoulder Roller ASM (RM6000)				
13	100-2276	2	Spacer-Frame				
14	99-8693	1	Rod-Support				
15	100-8011	1	Carrier Frame ASM				
15:2	93-2877	2	Bushing				
15:3	94-1291	2	Bushing-Special				
15:4	302-60	1	Fitting-Lube				
16	99-8664	1	Screw-HH				
17	32128-43	1	Nut – Flange				
18	99-8662	1	Tube – Spring				
19	3296-39	2	Nut-Lock, NI				
20	3218-5	3	Nut-Jam				

\* Not Illustrated.

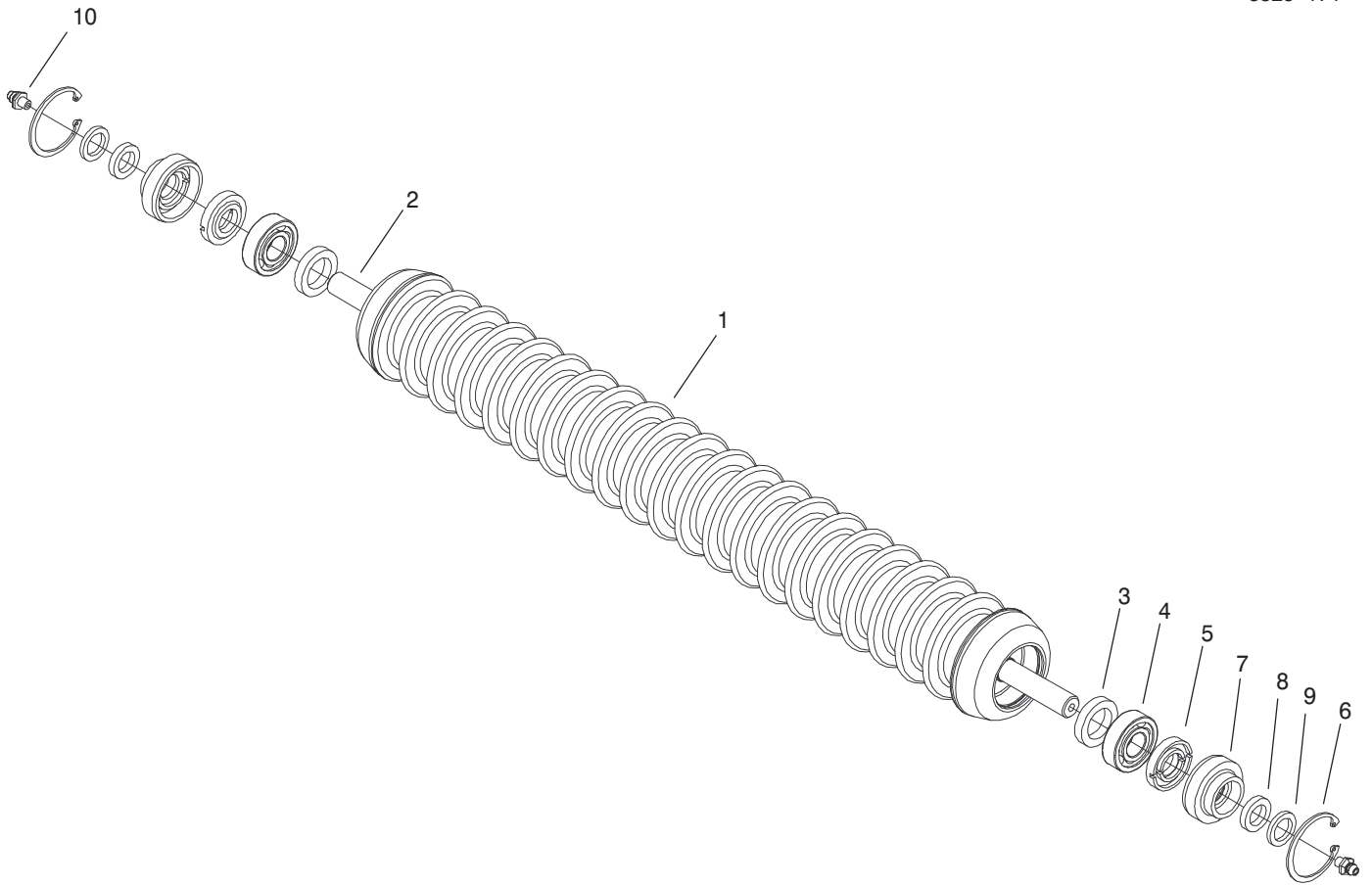


Sheet No.:A1

## Full Roller Assembly No. 99-5749

Ref. No.	Part No.	Qty.	Description
1	99-5748	1	Shaft-Roller
2	99-5718	1	Roller Tube ASM
3	93-3007	2	Seal - Oil
4	302-5	2	Fitting-Lube
5	109966	2	Bearing-Ball
6	93-1251	2	Seal - Inner
7	93-1252	2	Seal - Outer
8	32120-62	2	Ring-Retaining
9	253-70	2	Seal - Oil
10	93-2931	2	Washer - Roller

Ref. No.	Part No.	Qty.	Description

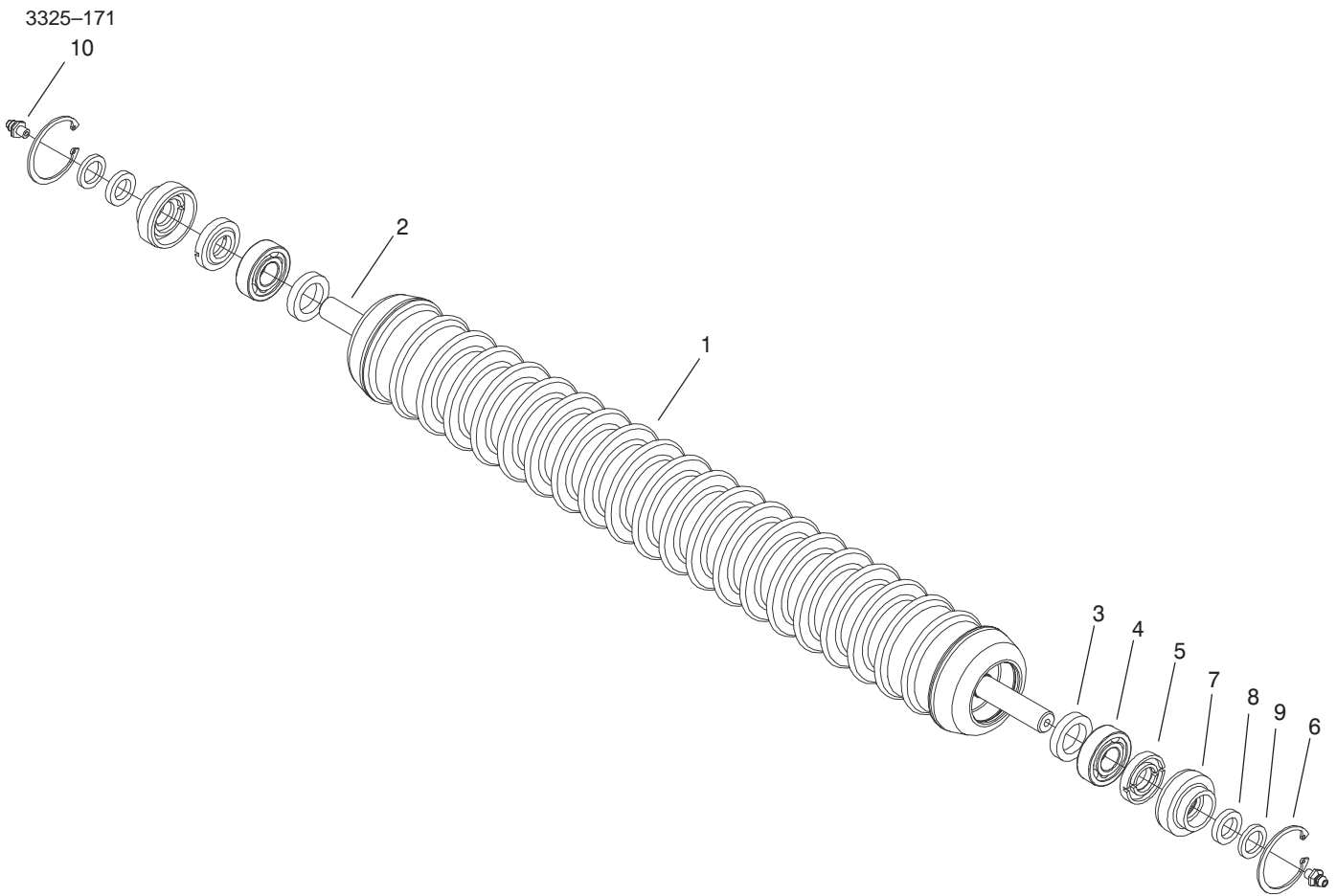


Sheet No.:A2

## Wiehle Roller Assembly No. 100-9906

Ref. No.	Part No.	Qty.	Description
1	100-9905-03	1	Wiehle Roller ASM
2	99-5748	3	Shaft-Roller
3	93-3007	6	Seal - Oil
4	109966	2	Bearing-Ball
5	93-1251	2	Seal - Inner
6	32120-62	2	Ring-Retaining
7	93-1252	2	Seal - Outer
8	253-70	2	Seal - Oil
9	93-2931	2	Washer - Roller
10	302-5	2	Fitting-Lube

Ref. No.	Part No.	Qty.	Description

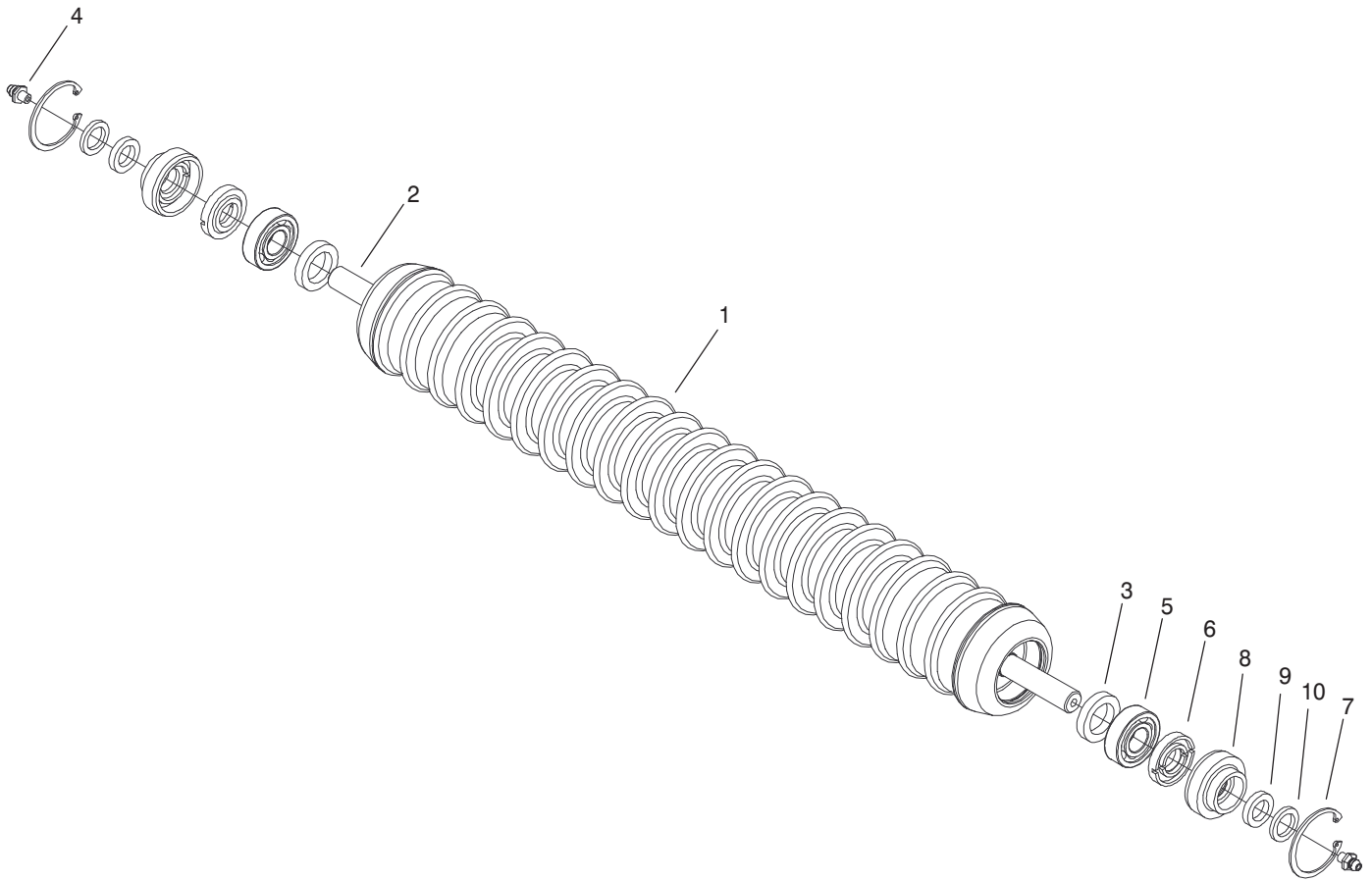


Sheet No.:A3

## Shoulder Roller Assembly No. 100-9911 (RM5500)

Ref. No.	Part No.	Qty.	Description
1	100-9910-03	1	Shoulder Weihle Roller ASM
2	99-5748	1	Shaft-Roller
3	93-3007	2	Seal-Oil
4	302-5	4	Fitting-Lube
5	109966	4	Bearing-Ball
6	93-1251	4	Seal - Inner
7	32120-62	4	Ring-Retaining
8	93-1252	4	Seal - Outer
9	253-70	4	Seal - Oil
10	93-2931	4	Washer - Roller

Ref. No.	Part No.	Qty.	Description

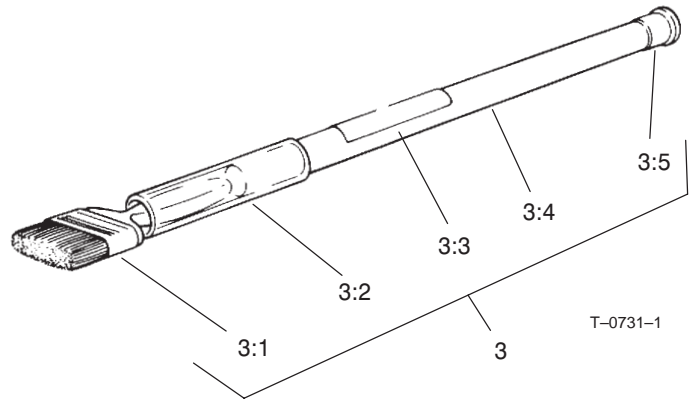
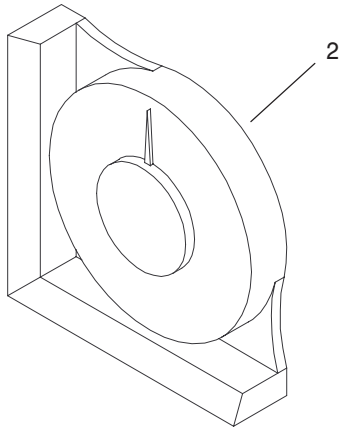
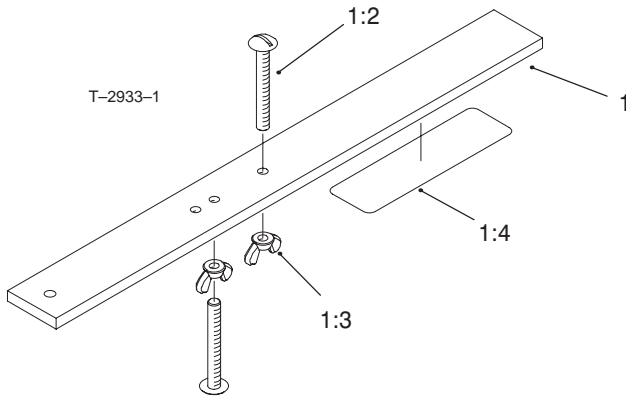


Sheet No.:A4

## Shoulder Roller Assembly No. 99-8675 (RM6000)

Ref. No.	Part No.	Qty.	Description
1	99-8674-03	1	Shoulder Wiehle Roller ASM
2	99-5748	1	Shaft-Roller
3	93-3007	2	Seal-Oil
4	302-5	4	Fitting-Lube
5	109966	4	Bearing-Ball
6	93-1251	4	Seal - Inner
7	32120-62	4	Ring-Retaining
8	93-1252	4	Seal - Outer
9	253-70	4	Seal - Oil
10	93-2931	4	Washer - Roller

Ref. No.	Part No.	Qty.	Description



Sheet No.:45

## Guage Bar, Angle Indicator and Handle Assembly

Ref. No.	Part No.	Qty.	Description
1	98-1852	1	Guage Bar ASM
1:2	32122-54	2	Screw-Head, Truss
1:3	32103-3	2	Nut-Wing
1:4	98-7976	1	Decal-Bar, Guage
2	99-3503	1	Indicator-Angle
3	29-9100	1	Handle ASM
3:1	36-4310	1	Brush
3:2	29-9090	1	Hose-Handle
3:3	12-9140	1	Decal-Body, Front
3:4	29-9080	1	Handle
3:5	2410-18	1	Plastic Cap

Ref. No.	Part No.	Qty.	Description



