



Form No. 3413-518 Rev C

Count on it.

Parts Catalog

Flow Divider Kit

Groundsmaster® 4500-D/4700-D Traction Unit

Model No. 31527



Ordering Replacement Parts

To order replacement parts, please supply the part number, the quantity, and the description of each part desired.

Understanding Reference Numbers

Each identified part in an illustration has a reference number. The reference number for a part also appears in the parts list, along with other information about the part.

This catalog uses two special reference number formats, one to indicate parts in a service assembly and another to indicate the quantity of a given part in an illustration.

Service Assembly Reference Numbers

Parts in service assemblies have reference numbers in the form a:b. The a represents the reference number of the entire service assembly and the b represents a sequential number unique to each part within the service assembly.

For example, a wheel assembly might be identified by reference number 6, the tire by 6:1, the valve by 6:2, and the wheel by 6:3. When you order the assembly identified by reference number 6, you receive all parts identified by reference numbers 6:1, 6:2, and 6:3. However, you may also order any part individually. Reference numbers of this type appear in illustration and in parts lists.

Reference Numbers Indicating Quantity

In an illustration, if a reference number indicates more than one part, the reference number has the form nX y. The n represents the quantity of the part, the X is the multiplication symbol, and the y represents the reference number.

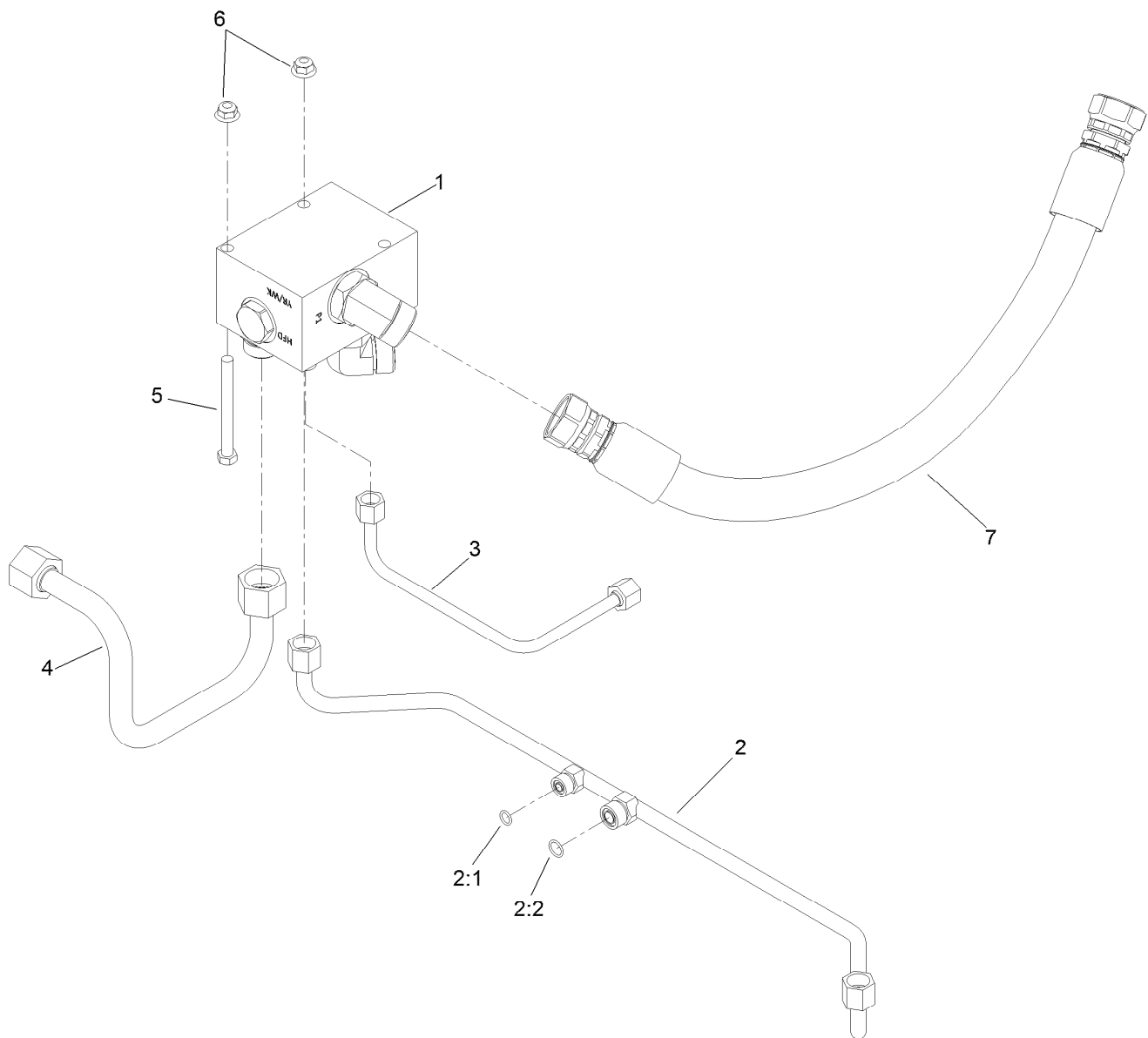
For example, in an illustration, the reference number 2X 37 means that two of the parts identified by reference number 37 are indicated.

Contents

Automatic Flow Divider Assembly 4

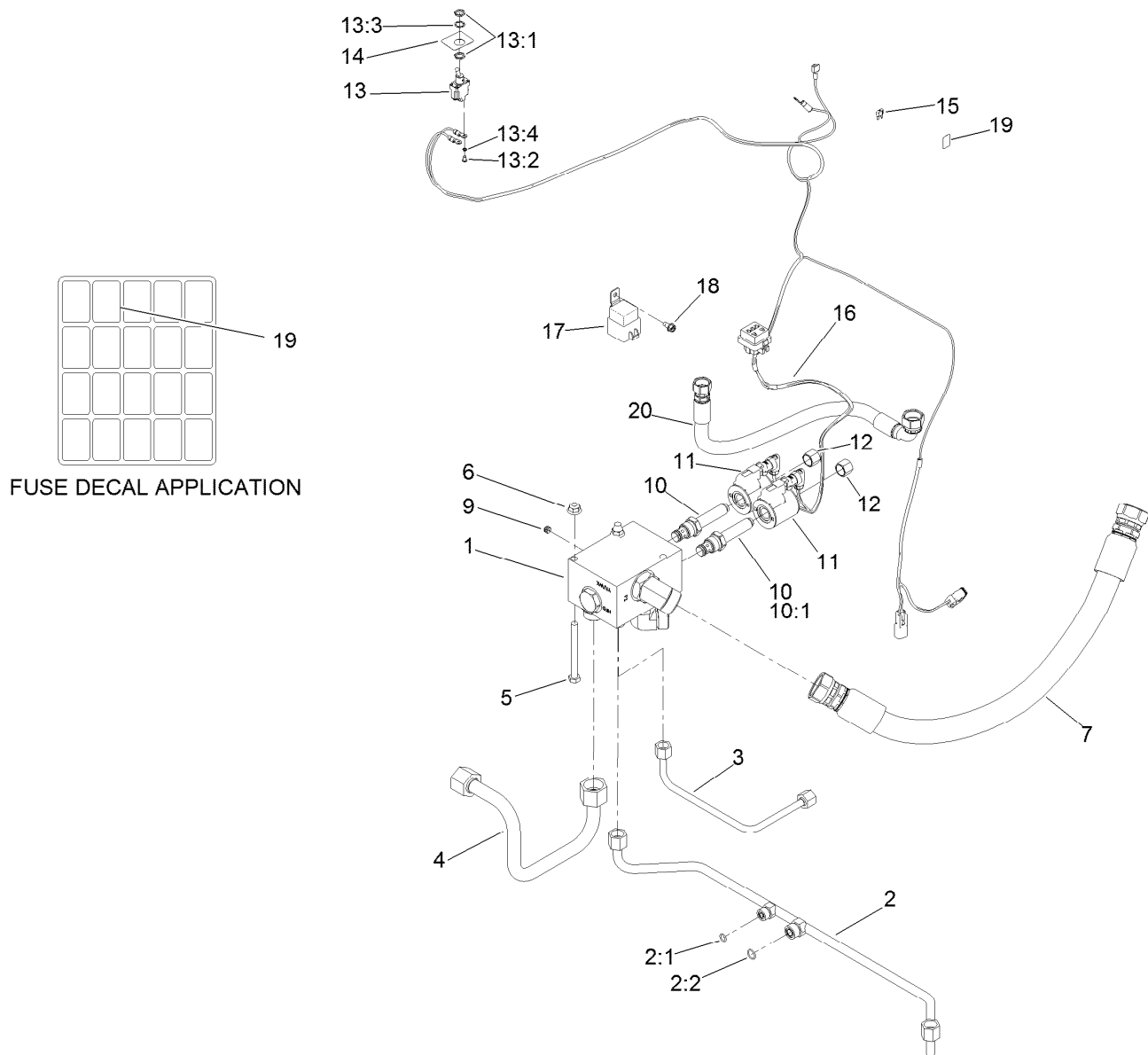
Manual Flow Divider Assembly 5

Flow Divider Manifold Assembly No. 121-3128..... 6



Automatic Flow Divider Assembly

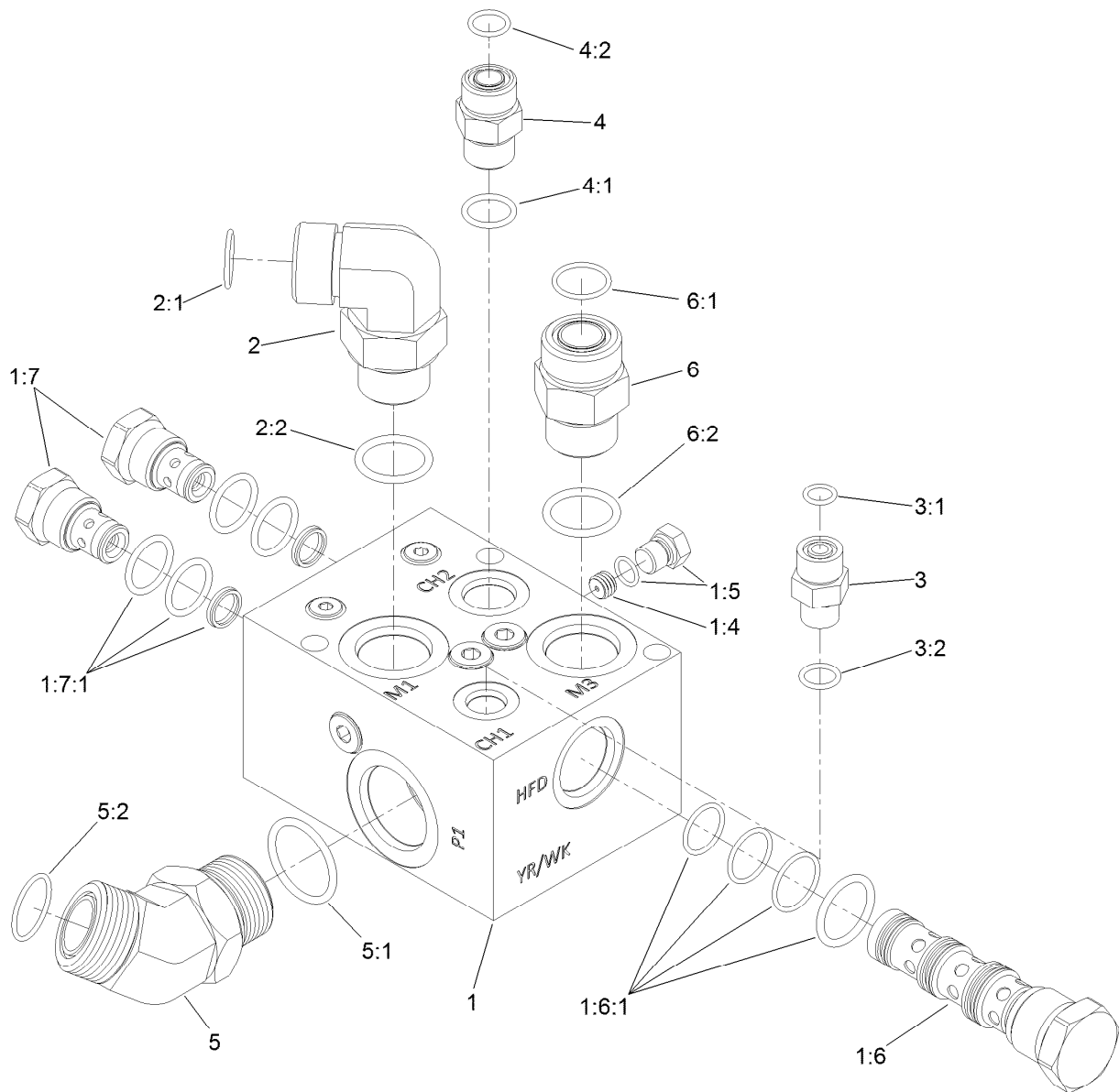
Ref.	Part Number	Qty.	Description
1	121-3128	1	Flow Divider Manifold ASM
2	125-4561	1	Tube ASM
2:1	237-22	1	O-Ring
2:2	237-30	1	O-Ring
3	125-4564	1	Tube ASM
4	125-4588	1	Tube ASM
5	323-42	2	Screw-HH
6	104-8301	2	Nut-HF, NI
7	136-2910	1	Hose ASM



Manual Flow Divider Assembly

Ref.	Part Number	Qty.	Description
1	121-3128	1	Flow Divider Manifold ASM
2	125-4561	1	Tube ASM
2:1	237-22	1	O-Ring
2:2	237-30	1	O-Ring
3	125-4564	1	Tube ASM
4	125-4588	1	Tube ASM
5	323-42	2	Screw-HH
6	104-8301	2	Nut-HF, NI
7	136-2910	1	Hose ASM
9	110-8889	1	Plug-Orifice (0.020)
10	132-6103	2	Valve
10:1	132-6231	1	Seal Kit
11	115-3021	2	Coil-12V
12	110-2635	2	Nut-Coil

Ref.	Part Number	Qty.	Description
13	122-0719	1	Switch-Toggle (On) - None - On
13:1	218-498	2	Nut-Lock
13:2	218-588	3	Screw
13:3	218-589	1	Washer
13:4	3253-19	3	Washer-Lock
14	132-6104	1	Decal-Momentary
15	121-8866	1	Fuse-Mini Blade, 10 Amp
16	122-0140	1	Harness-Wire
17	99-7430	1	Relay-Mini
18	32104-17	1	Screw-HWH
19	132-6185	1	Decal-Fuse, Momentary (4Wd)
20	136-2911	1	Hose ASM



Flow Divider Manifold Assembly No. 121-3128

Ref.	Part Number	Qty.	Description
1		1	Manifold-Flow Divider, 50/50 ●
1:4	112-6538	1	Orifice (.063 Inch)
1:5	117-0115	1	Plug
1:6	125-4634	1	Valve-Flow Divider, 50/50
1:6:1	125-4338	1	Seal Kit
1:7	125-4333	2	Valve-Check
1:7:1	125-4337	1	Seal Kit
2	340-142	1	Fitting-Elbow, 90 DEG
2:1	237-58	1	O-Ring
2:2	237-81	1	O-Ring
3	92-9258	1	Adapter-Check

Ref.	Part Number	Qty.	Description
3:1	237-22	1	O-Ring
3:2	237-42	1	O-Ring
4	100-4890	1	Fitting-Check
4:1	237-79	1	O-Ring
4:2	237-30	1	O-Ring
5	104-3509	1	Fitting-HYD, 45 DEG
5:1	237-146	1	O-Ring
5:2	340-65	1	O-Ring
6	340-9	1	Fitting-STR
6:1	237-58	1	O-Ring
6:2	237-81	1	O-Ring

● Not serviced separately

Notes:



Count on it.