



Electric Start Kit

Kohler Single Cylinder Engine, Proline Mid Size

Part No. 74–0980

Parts Catalog

Ordering Replacement Parts

To order replacement parts, please supply: the part number, the quantity, and the description of each part desired.

Understanding Reference Numbers

Each identified part in an illustration has a reference number. The reference number for a part also appears in the parts list, along with other information about the part.

This catalog uses two special reference number formats, one to indicate parts in a service assembly and another to indicate the quantity of a given part in an illustration.

Service Assembly Reference Numbers

Parts in service assemblies have reference numbers in the form **a:b**. The **a** represents the reference number of the entire service assembly and the **b** represents a sequential number unique to each part within the service assembly.

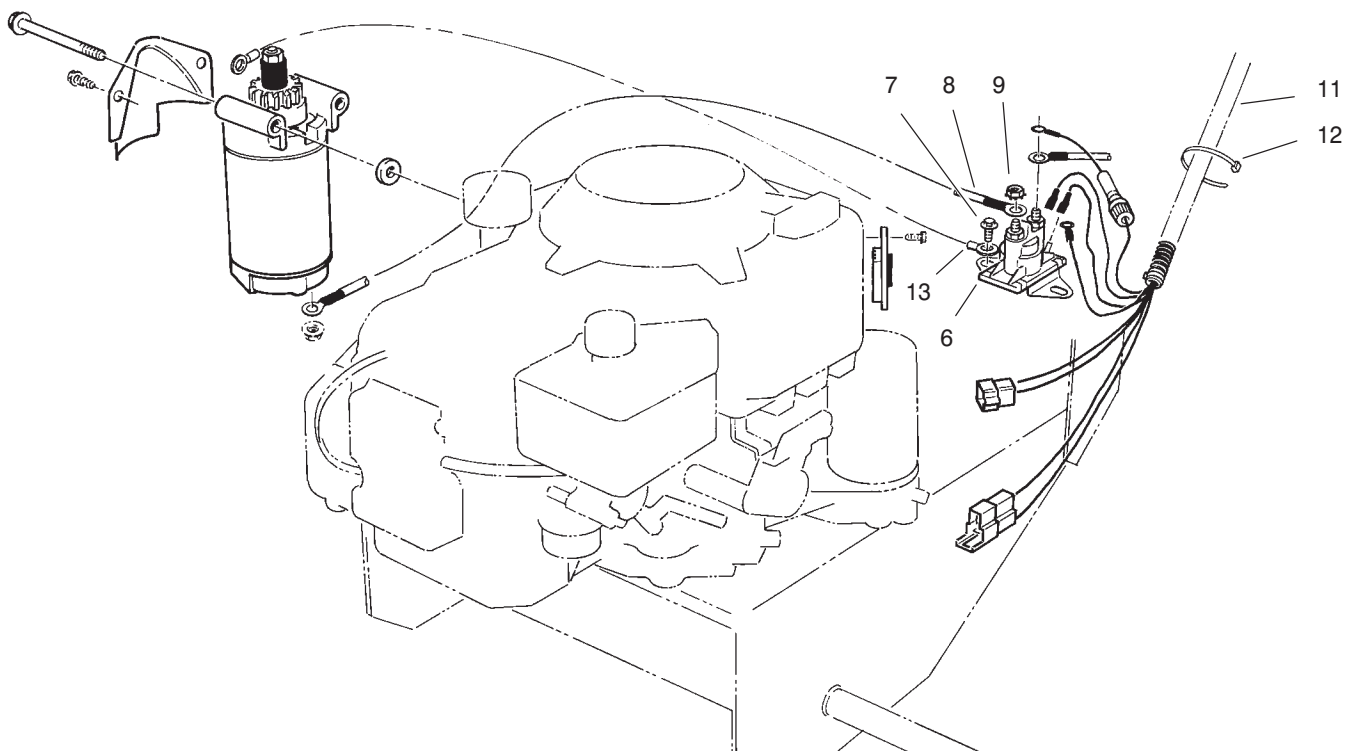
For example, a wheel assembly might be identified by reference number **6**, the tire by **6:1**, the valve by **6:2**, and the wheel by **6:3**. When you order the assembly identified by reference number **6**, you receive all parts identified by reference numbers **6:1**, **6:2**, and **6:3**. However, you may also order any part individually.

Reference numbers of this type appear in illustrations and in part lists.

Reference Numbers Indicating Quantity

In an illustration, if a reference number indicates more than one part, the reference number has the form **nX y**. The **n** represents the quantity of the part, the **X** is the multiplication symbol, and the **y** represents the reference number.

For example, in an illustration, the reference number **2X 37** means that two of the parts identified by reference number **37** are indicated.



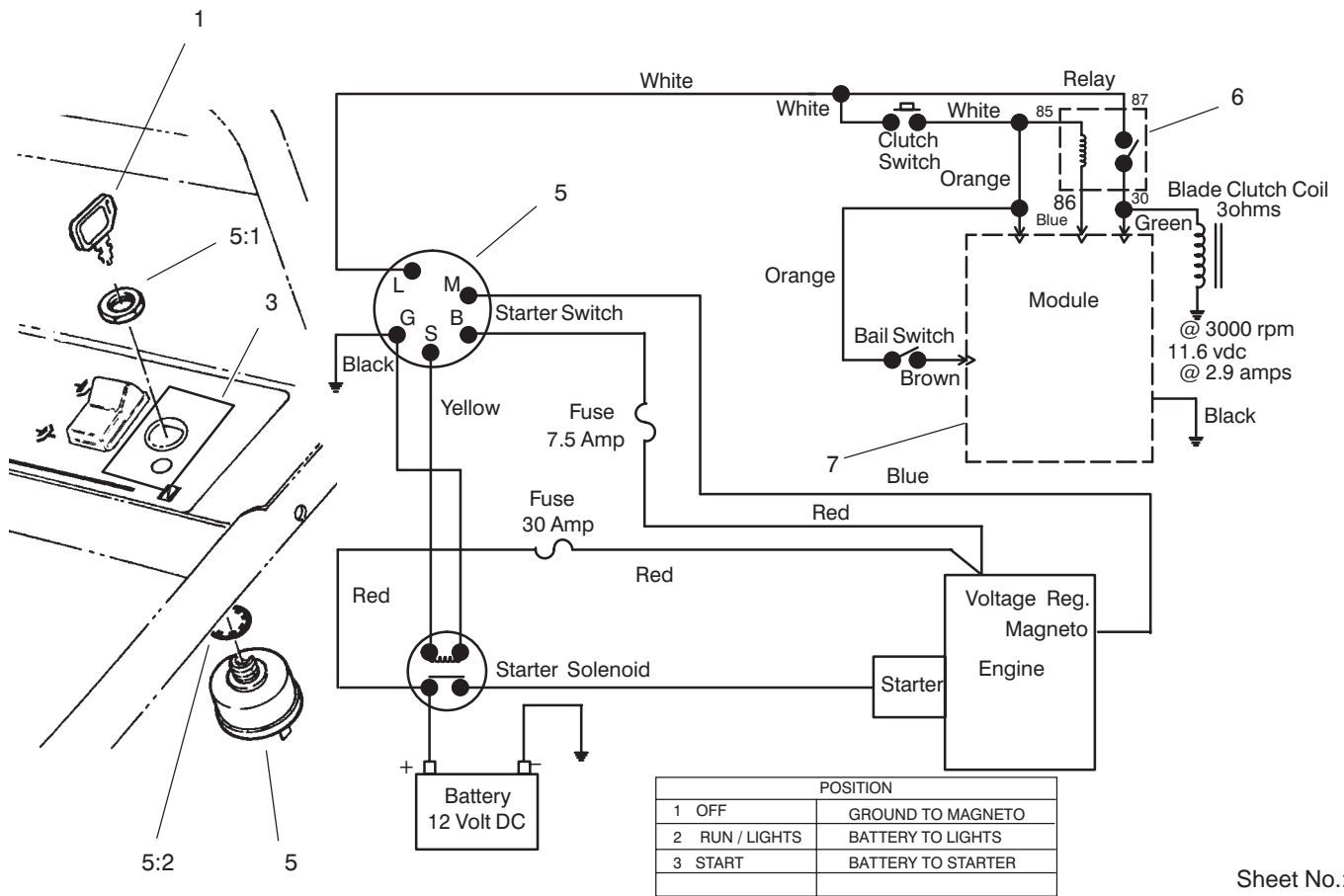
Sheet No.:1

T-1132

Solenoid Assembly

Ref. No.	Part No.	Qty.	Description
6	28-4210	1	Solenoid
7	12-3270	2	Screw
8	28-3891	1	Solenoid/Starter Wire
9	32149-2	2	Nut-Keps
11	82-4850	1	Harness-Wire
11	95-2809	1	Harness-Wire
12	3290-378	3	Tie-Cable
13	54-3091	1	Wire ASM

Ref. No.	Part No.	Qty.	Description

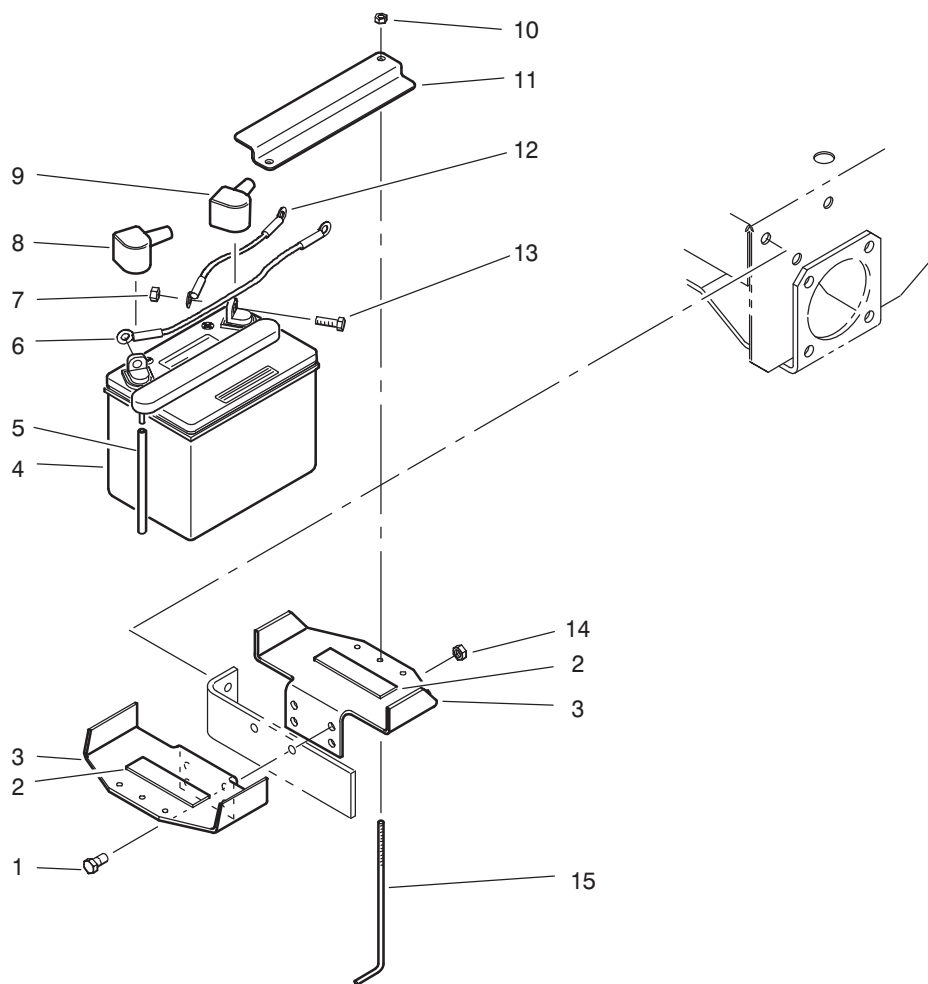


Sheet No.:2
C-0762

Ignition Switch and Wiring Diagram

Ref. No.	Part No.	Qty.	Description
1	63-8360	1	Key-Ignition
3	74-0880	1	Decal - Control Panel
5	23-0660	1	Switch-Starter
5:1	218-461	1	Nut-HH
5:2	3254-5	1	Washer-Lock/Internal
6	86-7910	1	Module
7	63-7590	1	Relay

Ref. No.	Part No.	Qty.	Description



Sheet No.:4
C-0726

Battery Assembly

Ref. No.	Part No.	Qty.	Description
1	323-9	2	Screw-HH
2	51-4210	2	Pad-Tank, Fuel
3	92-2350-01	2	Holder - Battery
4	92-1678	1	Battery
5	68-3810	1	Tube-Vent
6	54-3093	1	Wire ASM
7	32149-1	3	Nut-Keps
8	77-0980	1	Boot-Terminal
9	77-0981	1	Boot-Terminal
10	3296-42	2	Nut-Lock
11	82-4620-01	1	Strap - Battery
12	28-3893	1	Wire ASM
13	322-3	2	Screw-HH
14	3296-39	2	Nut-Lock, NI
15	12-5950	2	Rod-support, Battery

Ref. No.	Part No.	Qty.	Description