



**Superblower/Vac**

**Blower/Vacuum**

Model No. 51521—200000001 & Up


**Operator's Manual**

# Important Safety Instructions

When using an electrical appliance, basic precautions should always be followed, including the following:

## Read All Instructions Before Using This Appliance

**Warning**—To reduce the risk of fire, electric shock, or injury, follow these safety instructions.

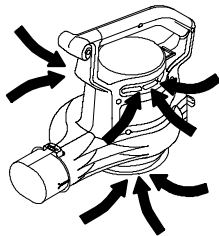
To ensure maximum safety, best performance, and to gain knowledge of the appliance, **it is essential that you and any other operator of the appliance read and understand the contents of this manual before operating the appliance.** Pay particular attention to the safety alert symbol  which means CAUTION, WARNING or DANGER—personal safety instruction. Read and understand the instruction because it has to do with safety. **Failure to comply with these instructions may result in personal injury, risk of fire, or electrical shock.**

Do not leave the appliance when plugged in. Unplug from outlet when not in use and before servicing.

Do not allow appliance to be used as a toy. Do not use near children. Do not let children use the appliance.

Use only as described in this manual. Use only manufacturer's recommended attachments.

**Dress properly.** Do not wear loose clothing or jewelry. Pin up long hair. Be aware of the position of the blower and the air inlets during operation. Loose clothing, jewelry and hair can be drawn into the inlets (refer to the following figure) and may result in personal injury. Always wear substantial footwear, long pants, and eye protection.



Do not use with damaged cord or plug. If appliance is not working as it should, has been dropped, damaged, left outdoors, or dropped into water, return it to a service dealer.

Do not pull or carry by cord, use cord as a handle, close a door on cord, or pull cord around sharp edges or corners. Keep cord away from heated surfaces.

Do not unplug by pulling on cord. To unplug, grasp the plug, not the cord.

Do not handle plug or appliance with wet hands.

Do not put any object into openings. Do not use with any opening blocked; keep free of dust, lint, hair, and anything that may reduce air flow.

Turn off all controls before unplugging.

Use extra care when cleaning on stairs.

Do not use to vacuum up flammable or combustible liquids, such as gasoline, or use in areas where they may be present.

This appliance is provided with double insulation. Use only identical replacement parts. See instructions for servicing of Double-Insulated Appliances.

Do not vacuum anything that is burning or smoking, such as cigarettes, matches, or hot ashes.

Do not use without vac bag or proper attachments in place.

## Sound Pressure Level

This unit has a sound pressure at the operator's ear of 95 dB(A), based on measurements of identical machines per Directive 81/1051/EEC.

## Sound Power Level

This unit has a sound power level of 110 LwA, based on measurements of identical machines per Directive 79/113/EEC.

## Vibration Level

This unit has a maximum hand-arm vibration level of 2.5 m/s<sup>2</sup>, based on measurements of identical machines per EN 1033.

## Save These Instructions

# Symbol Glossary

Safety alert triangle — symbol within triangle indicates a hazard



Safety alert symbol



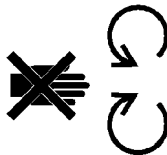
Read operator's manual



Consult technical manual for proper service procedures



Do not open or remove safety shields while engine is running



Wear eye protection



Thrown or flying objects — Whole body exposure



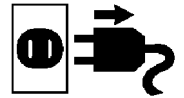
Keep dry



Electrical shock/electrocution



Disconnect power



Severing of fingers or hand—impeller blade

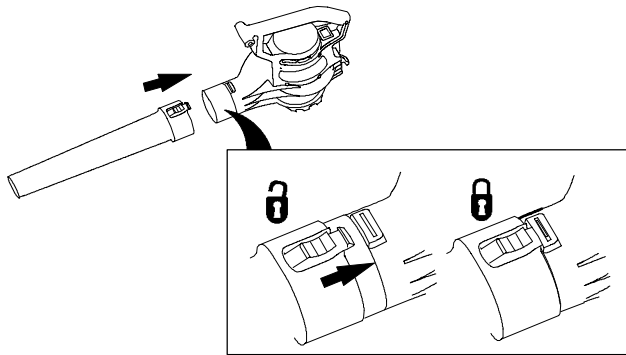


Alignment of the impeller cover

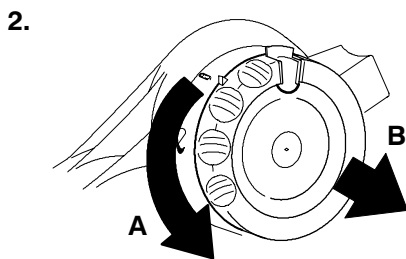
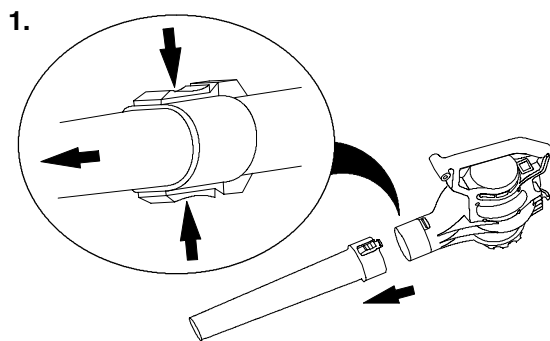


# Assembly

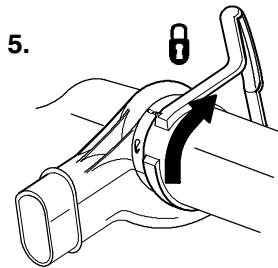
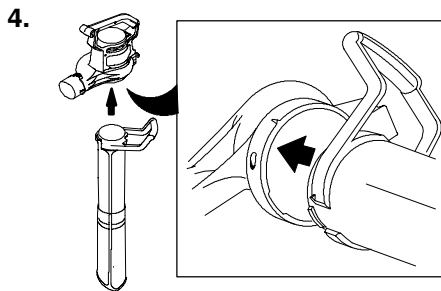
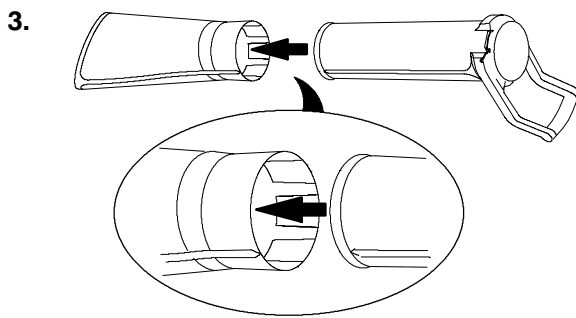
## Assembling the Blower



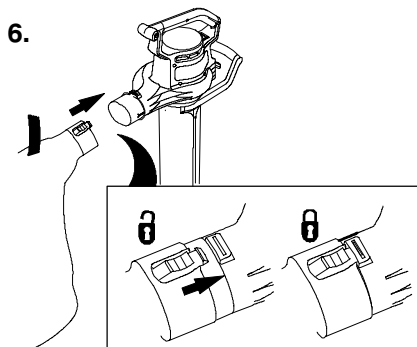
## Converting from Blower to Vacuum



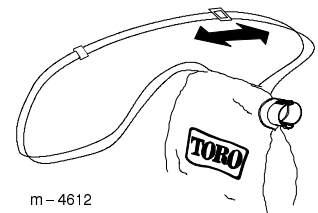
- ⚠ The impeller rotates for a few seconds after you turn off the blower and can cut or injure fingers.
- ⚠ Do not remove the bottom inlet cover when the motor is running or when the unit is plugged into a power outlet.



**Important:** The vacuum will not run unless the vacuum tube is turned clockwise as far as possible, locking it in place (step 5).

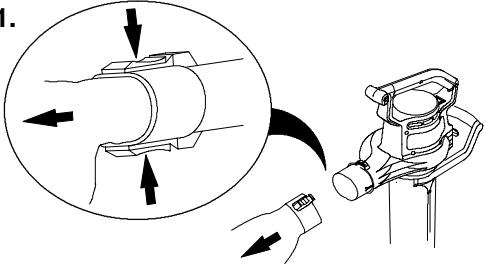
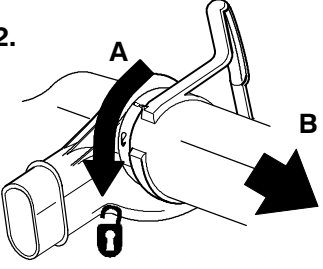
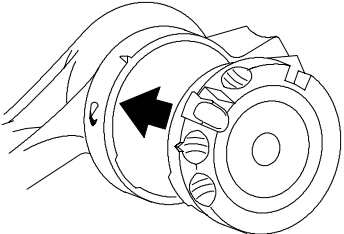
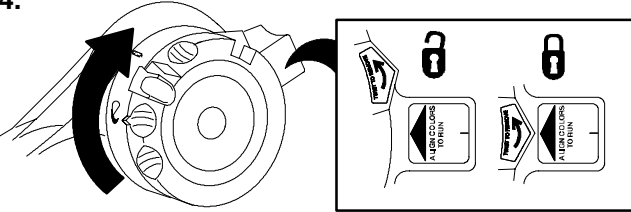
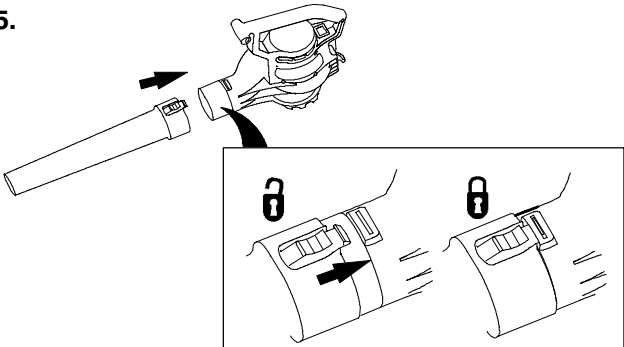


7. Adjust the strap as needed for comfortable operation.



m-4612

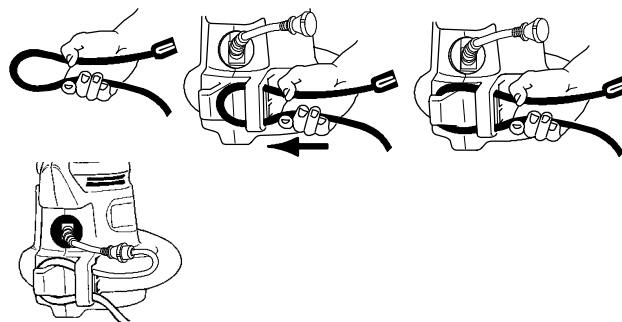
## Converting from Vacuum to Blower

- 
  - 
  - 
  - 
- Important:** The blower will not run unless the bottom inlet cover is turned clockwise as far as possible, locking it in place (step 4).
- 

## Operation



### Connecting to a Power Source

Use only an extension cord recommended for outdoor use.



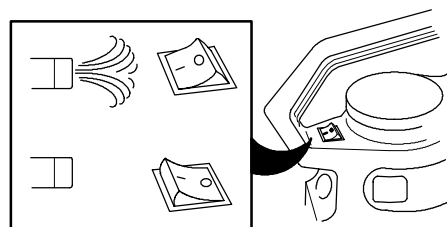
### Warning



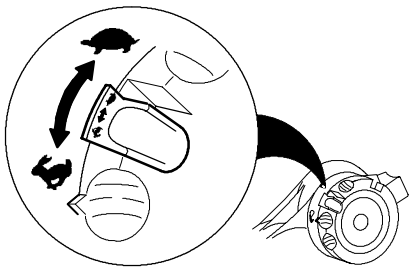
-  If you do not fully seat the extension cord on the inlet plug, the loose plug could lead to overheating and cause a fire, possibly burning you or others.
-  Ensure that you fully seat the cord on the plug and use the cord lock feature to secure the cord.

**Important:** Check the power cord frequently during use for holes in the insulation. Do not use a damaged cord. Do not run the cord through water or wet grass.

## Starting/Stopping

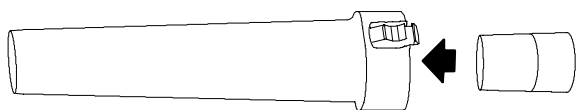


## Adjusting the Blower Air Speed

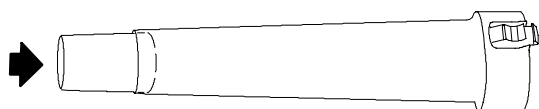


## Using the Concentrator Nozzle Accessory

Install the concentrator nozzle into the blower tube to help reach into narrow spaces or to move matted debris off of hard surfaces.



Remove the concentrator nozzle when finished.



## Using the Blower

The blower is intended for residential use only. Use the blower outdoors to move debris as needed.



### Caution



- ⚠ The blower can throw debris, possibly causing serious personal injury to the operator or bystanders. Read and use the following precautions when using the blower:
- ⚠ • Do not blow hard objects such as nails, bolts, or rocks.
- ⚠ • Do not operate the blower near bystanders or pets.
- ⚠ • Use extra care when cleaning debris from stairs or other tight areas.
- ⚠ • Wear safety goggles or other suitable eye protection, long pants, and shoes.

## Using the Vacuum



### Caution



- ⚠ The vacuum can throw debris, possibly causing serious personal injury to the operator or bystanders.
- ⚠ Do not operate the vacuum without the bag installed or with the bag zipper open.
- ⚠ Do not vacuum sharp, pointed, or hard objects that could be thrown through the fabric of the bag, such as wires, staples, nails, or rocks.



**Important:** Do not force the vacuum tube into a pile of debris or hold the tube upright while force feeding debris into the tube. Either action may clog and damage the impeller. If the vacuum starts to vibrate or make abnormal noise, stop it, **unplug** the cord, and check for the cause.

## Emptying the Bag

1. Turn off and unplug the vacuum from the power source.

2.



Do not store debris in the bag. To clean the bag, turn it inside out and shake out any excess debris. Once a year, hand wash the bag in soapy water and allow it to air dry.



## Warning

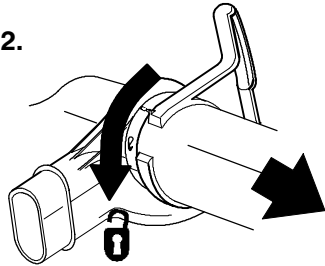


- ⚠ **Normal usage of the bag causes it to wear and deteriorate over time. A worn or deteriorated bag allows small objects to be thrown through the bag, possibly injuring the operator or bystanders.**
- ⚠ **Check the bag frequently. If it is worn or deteriorated, replace it with a genuine Toro vacuum bag.**

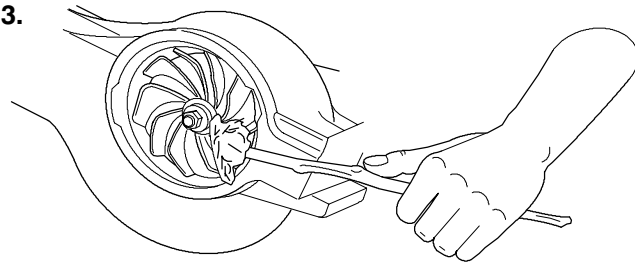
## Removing Clogged Debris from the Impeller

1. Turn off and **unplug** the vacuum from the power source and wait for all moving parts to stop.

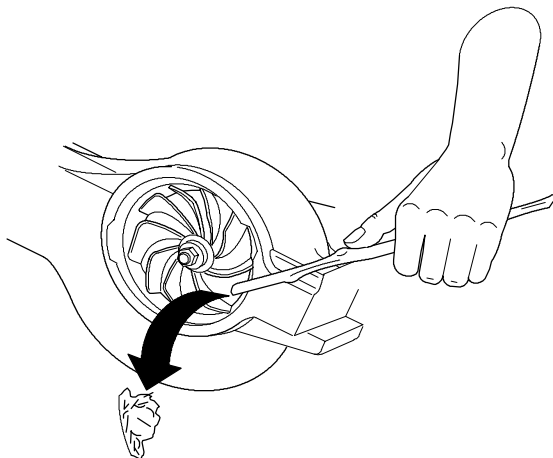
2.



3.



4.



5. Check the impeller for any signs of damage. If it is damaged, contact your Authorized Toro Dealer.
6. Install the vacuum tube or, if you want to switch to blower mode, the bottom inlet cover. Refer to Converting from Blower to Vacuum or Converting from Vacuum to Blower for more information.

## Storage

Store the blower/vacuum and extension cord indoors, in a cool dry location, out of reach of children and animals.

## Troubleshooting


If your blower fails to run when you turn it on, consult the following list before contacting your Authorized Toro Dealer:

- Ensure that the bottom inlet cover or vacuum tube is locked in place.
- Ensure that the power cord is secured in place on the back of the blower and that the plug is fully seated.

## Service

Toro has designed this product to give you years of trouble free use. Should it need service, bring the product to your Authorized Toro Service Dealer. Your Toro Dealer is specially trained to fix Toro products and will ensure that your Toro stays "All" Toro.

## Double-insulated Appliances

In a double-insulated appliance, two systems of insulation are provided instead of grounding. No grounding means is provided on a double-insulated appliance, nor should a means for grounding be added to the appliance. Servicing a double-insulated appliance requires extreme care and knowledge of the system, and should be done only by the qualified service personnel at your Authorized Toro Service Dealer. Replacement parts for a double-insulated appliance must be identical to the parts they replace. A double-insulated appliance is marked with the words "Double Insulation" or "Double Insulated." The symbol (square within a square)  may also be marked on the appliance.

# TORO AUSTRALIA POWER EQUIPMENT WARRANTY

Subject to the warranty condition below, this tool (hereinafter called "the product") is warranted by Toro Australia (hereinafter called "the Company") to be free from defects in material or workmanship for a period of 24 months from the date of original purchase covering both parts and labour. Under the terms of this warranty, the repair or replacement of any part shall be the opinion of the Company or its authorised agent. Should service become necessary during the warranty period, the owner should contact the Authorised Toro Retailer from whom the product was purchased, or the nearest Company Branch Office. In order to obtain warranty service, the owner must present the sales docket and Warranty Certificate to confirm date of purchase. This product is sold by the dealer or agent as principal, and the dealer has no authority from the Company to give any additional warranty or guarantee on the Company's behalf except as herein contained or herein referred to.

## Warranty Conditions

This warranty applies provided the product has been used in accordance with the manufacturer's recommendations under normal use and reasonable

care (in the opinion of the Company), and such warranty does not cover damage, malfunction or failure resulting from misuse, neglect, abuse or use for a purpose for which it was not designed or is not suited; and no repairs, alterations or modifications have been attempted by other than an Authorised Service Agent. This guarantee will not apply if the tool is damaged by accident or if repairs arise from normal wear and tear.

The Company accepts no additional liability pursuant to this warranty for the costs of travelling or transportation of the product to and from the service dealer or agent - which costs are not included in this warranty.

Certain legislation, including the Trade Practices Act, 1974 (as amended) and other state and territorial laws give rights to the buyer and impose liability on the seller in certain circumstances. Nothing herein shall have the effect of excluding, restricting or modifying any condition, warranty, right or liability imposed, to the extent only that such exclusion, restriction or modification would render any term herein void.

## Toro Australia Pty Limited

A.C.N. 001 310 443 Incorporated in S.A.

Adelaide: 53 Howards Road, Beverley, SA 5009  
131 588

Brisbane: Unit 2, 480 Nudgee Road, Hendra  
QLD 4011 (07) 3268 1385

Perth: Unit 3, 21 Ledger Road, Balcatta WA 6021  
(08) 9478 3773

Sydney: Unit 4, 148-308 James Ruse Drive  
Parramatta NSW 2150 (02) 9687 2366

Melbourne: 59 Woodlands Drive, Braeside,  
VIC 3195 (03) 9580 7355

### ***This Warranty Form should be retained by the customer at all times***

For your record and to assist in establishing date of purchase (necessary for in-warranty service), please keep your purchase docket and this form completed with the following particulars:

Purchasing from: \_\_\_\_\_

Address of Dealer: \_\_\_\_\_

Date: \_\_\_\_\_ Model No. \_\_\_\_\_ Serial No. \_\_\_\_\_

Present this form with your purchase docket when warranty service is required.