



Deck Lock Kit

Groundsmaster® 4500-D/4700-D Traction Unit

Model No. 119-8641

Form No. 3442-456 Rev A

Installation Instructions

Installation

This kit automatically prevents uneven settling of the mower decks.

Note: Determine the left and right sides of the machine from the normal operating position.

1

Installing a Deck-Lock Manifold for the Number 1 Lift Arm

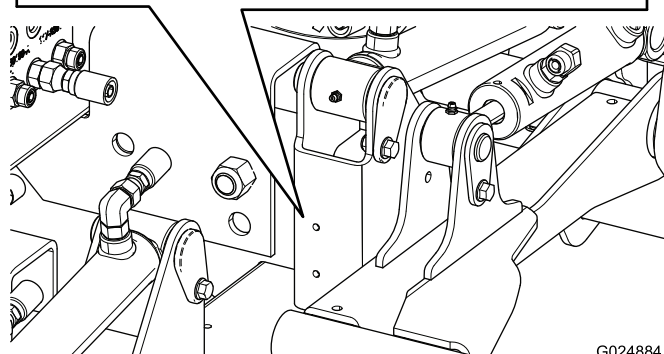
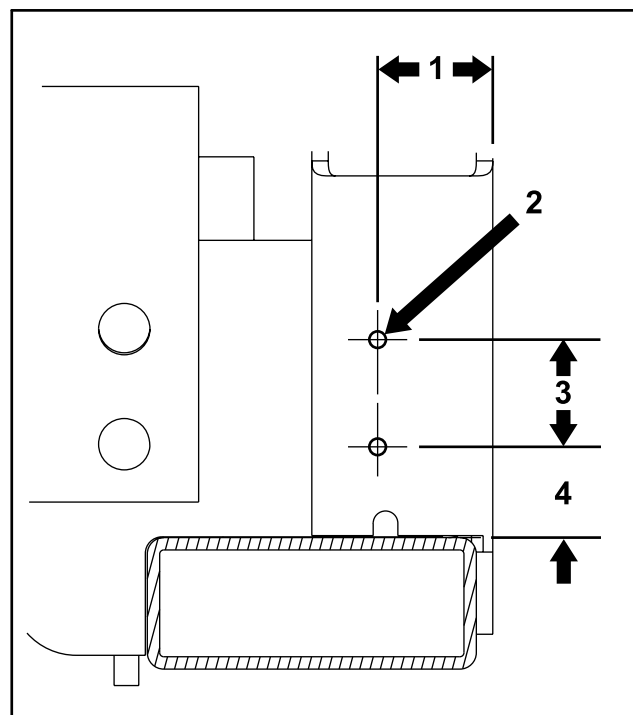
Parts needed for this procedure:

1	Right manifold assembly (Part No. 119-8631)
1	Straight hydraulic fitting
1	90-degree hydraulic fitting
2	Self tapping screw (1/4 x 1-3/4 inch)
1	Hydraulic hose

Procedure

1. Park the machine on a level surface, lower the cutting decks, apply the parking brake, shut off the engine and remove the key.
2. Using the dimensions shown in [Figure 1](#), locate, mark and drill 2 holes (0.221 or 0.228 inch, #1 or #2 drill size) in the traction unit frame tube for the number 5 lift arm. Drill through only 1 wall of the tube.

Note: Use of a 90° drill is recommended.



G024884
g024884

Figure 1

1. 4.4 cm (1.75 Inches)
 2. Holes (0.221 or 0.228 inch)
 3. 4.1 cm (1.63 inches)
 4. 3.5 cm (1.38 inches)
3. Mount the right deck-lock manifold to the frame tube with 2 self tapping screws (1/4 x 1-3/4 inch). Position the manifold as shown in [Figure 2](#).



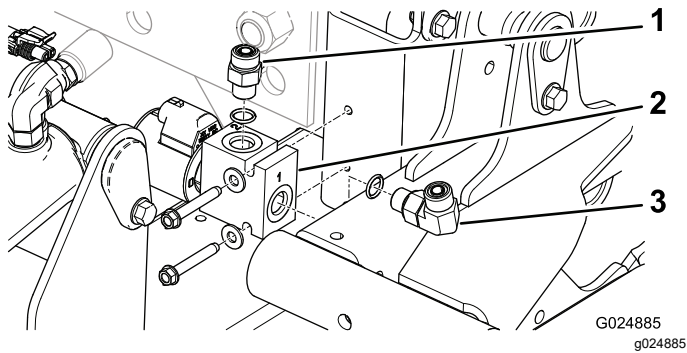


Figure 2

1. Straight hydraulic fitting
 2. Deck-lock manifold
 3. 90-degree hydraulic fitting
-
4. Install the straight hydraulic fitting into the top of the manifold (Figure 2).
 5. Install the 90-degree hydraulic fitting into the end of the manifold (Figure 2).
 6. Place a drain pan under the junction manifold (Figure 3).
 7. Disconnect the hydraulic hose from the lower center fitting on the junction manifold (Figure 3).

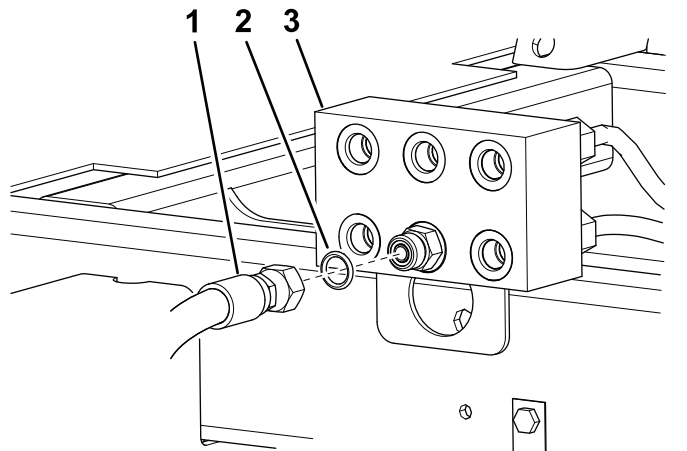


Figure 3

1. Hydraulic hose
2. O-ring
3. Junction manifold

8. Route and install the end of the hose disconnected from the junction manifold fitting to the top (straight) fitting on the deck-lock manifold (Figure 4).

Note: Make sure that all O-rings are in place and lubricated with hydraulic fluid before installation.

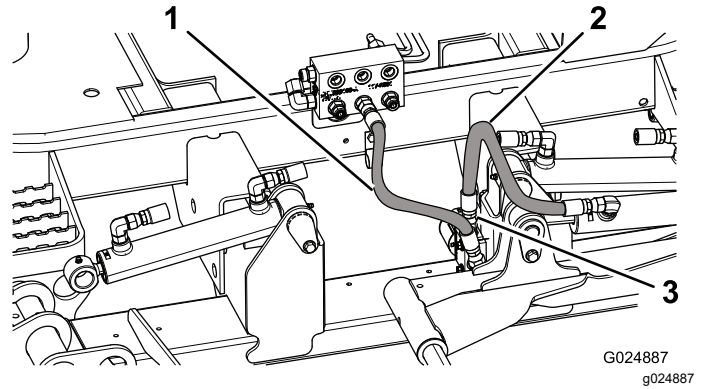


Figure 4

1. New hose
 2. Disconnected hose
 3. Deck-lock manifold top fitting
-
9. Route and install the new hose to the junction manifold and the 90-degree deck-lock manifold fitting (Figure 4).

Important: Make sure the hose from the junction manifold to the deck-lock manifold does not contact the number 1 lift arm.

2

Installing a Deck-Lock Manifold for the Number 5 Lift Arm

Parts needed for this procedure:

1	Left manifold assembly (Part no. 119-8639)
1	Straight hydraulic fitting
1	90-degree hydraulic fitting
2	Self tapping screw (1/4 x 1-3/4 inch)
1	Hydraulic hose

Procedure

1. Using the dimensions shown in Figure 5, locate, mark and drill 2 holes (0.221 or 0.228 inch, #1 or #2 drill size) in the traction unit frame tube for the number 5 lift arm. Drill through only 1 wall of the tube.

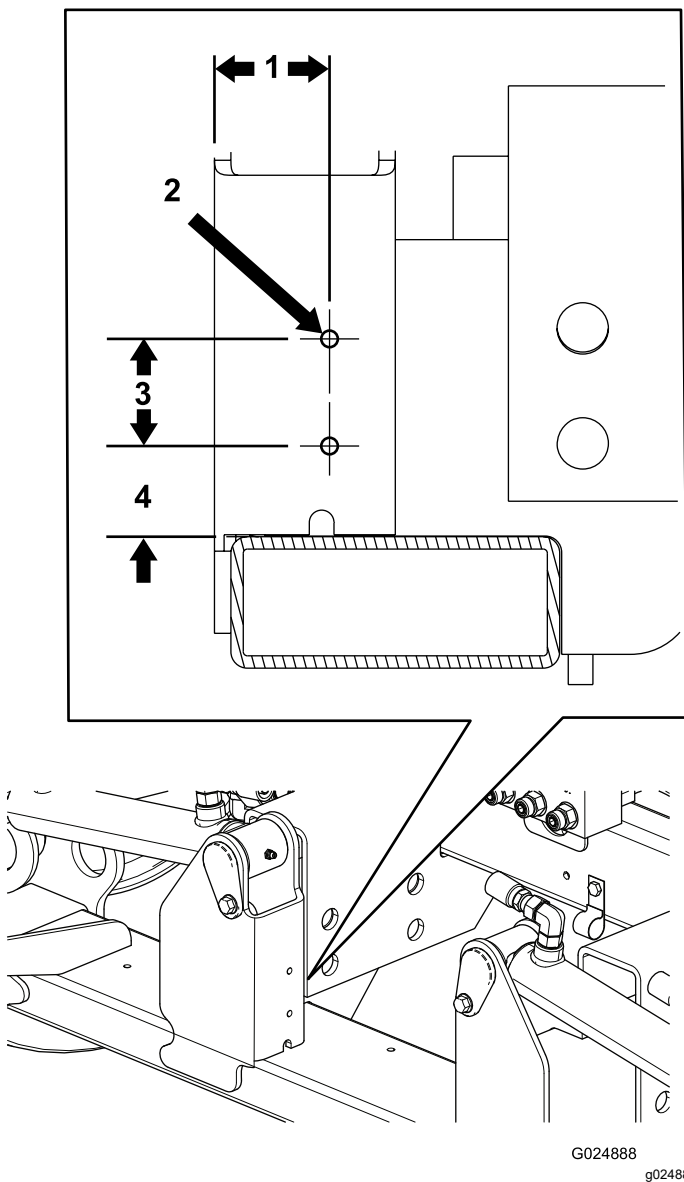


Figure 5

- | | |
|--------------------------------|-------------------------|
| 1. 4.4 cm (1.75 inches) | 3. 4.1 cm (1.63 inches) |
| 2. Holes (0.221 or 0.228 inch) | 4. 3.5 cm (1.38 inches) |

2. Mount the left deck-lock manifold to the frame tube with 2 self tapping screws (1/4 x 1-3/4 inch). Position the manifold as shown in [Figure 6](#).

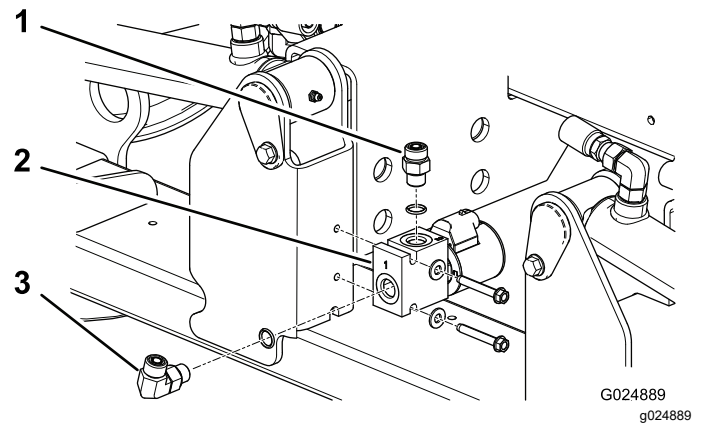


Figure 6

- | | |
|-------------------------------|--------------------------------|
| 1. Straight hydraulic fitting | 3. 90-degree hydraulic fitting |
| 2. Deck-lock manifold | |

3. Install the straight hydraulic fitting into the top of the manifold ([Figure 6](#)).
4. Install the 90 degree hydraulic fitting into the end of the manifold ([Figure 6](#)).
5. Place a drain pan under the junction manifold ([Figure 7](#)).
6. Disconnect the hydraulic hose from the lower left fitting on the junction manifold ([Figure 7](#)).

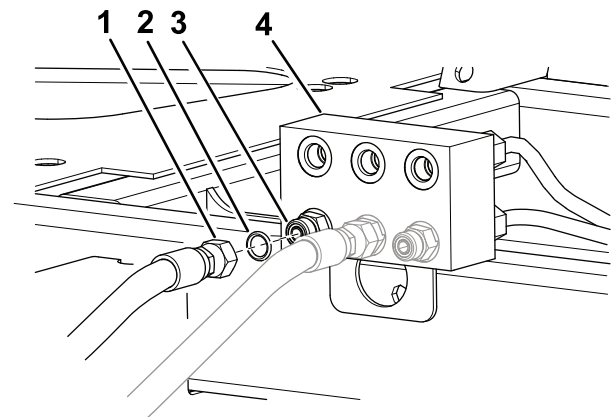


Figure 7

- | | |
|-------------------|----------------------|
| 1. Hydraulic hose | 3. Hydraulic fitting |
| 2. O-ring | 4. Junction manifold |

7. Route and install the end of the hose disconnected from the junction manifold fitting to the top (straight) fitting on the deck-lock manifold ([Figure 8](#)).

Note: Make sure that all O-rings are in place and lubricated with hydraulic fluid before installation.

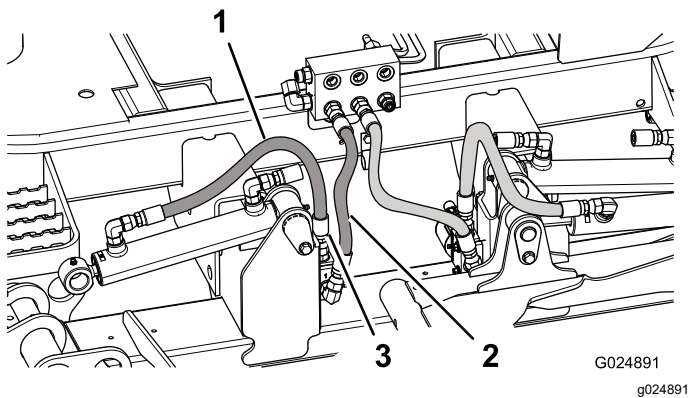


Figure 8

1. Disconnected hose
2. New hose
3. Deck-lock manifold top fitting

8. Route and install the new hose to the junction manifold and 90-degree, deck-lock manifold fitting (Figure 8).

Important: Make sure that the hose from the junction manifold to the deck-lock manifold does not contact the number 5 lift arm.

3

Installing the Wire Harness

Parts needed for this procedure:

1	Wire harness
4	Cable tie

Procedure

1. Unlatch and raise the seat. Secure the seat with the prop rod.
2. Disconnect the electrical connector from the S5 solenoid on the lift manifold (Figure 9) and connect it to the connector on the deck-lock harness labeled S5 HARNESS.

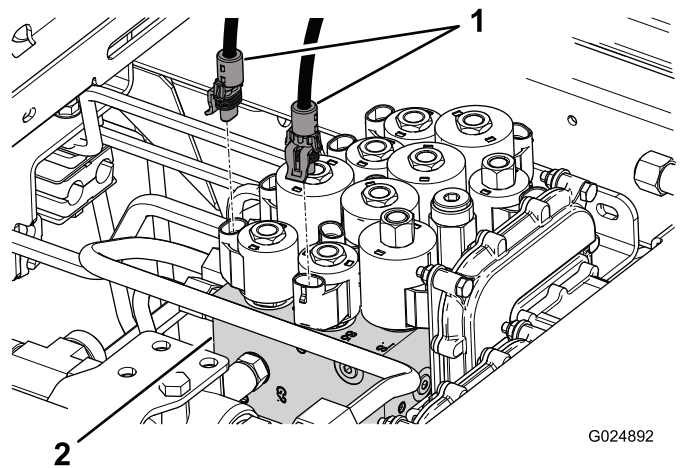


Figure 9

(Groundsmaster 4700-D Machine Shown)

1. Harness connectors
2. Lift manifold

3. Plug the connector on the deck-lock harness labeled S5 SOLENOID to the S5 solenoid on the lift manifold (Figure 9).
4. Disconnect the electrical connector from the S6 solenoid on the lift manifold (Figure 9) and plug it to the connector on the deck-lock harness labeled S6 harness.
5. Plug the connector on the deck-lock harness labeled S6 SOLENOID to the S6 solenoid on the lift manifold.
6. Route and plug the appropriate connector on the deck-lock harness labeled DECK-LOCK SOLENOID to the solenoid on the rear of each deck-lock manifold.
7. Secure the harness away from any sharp, hot or moving components with cable ties.
8. Disengage the seat prop and lower the seat.