



Tow Pole Reinforcement Kit

Log Splitter

Model No. 144-2044

Form No. 3442-534 Rev A

Installation Instructions

Installation

Preparing the Machine

1. Park the machine on a level surface and shut off the engine. Allow the engine to cool. Chock or block the wheels.
2. Disconnect the spark plug wire.
3. Raise the rail to the vertical position as follows.
 - A. Remove the lock pin.
 - B. Rotate the rail so that it is vertical, against the base of the machine.
 - C. Rotate the vertical lock lever to the closed position to secure the lower rail in place.

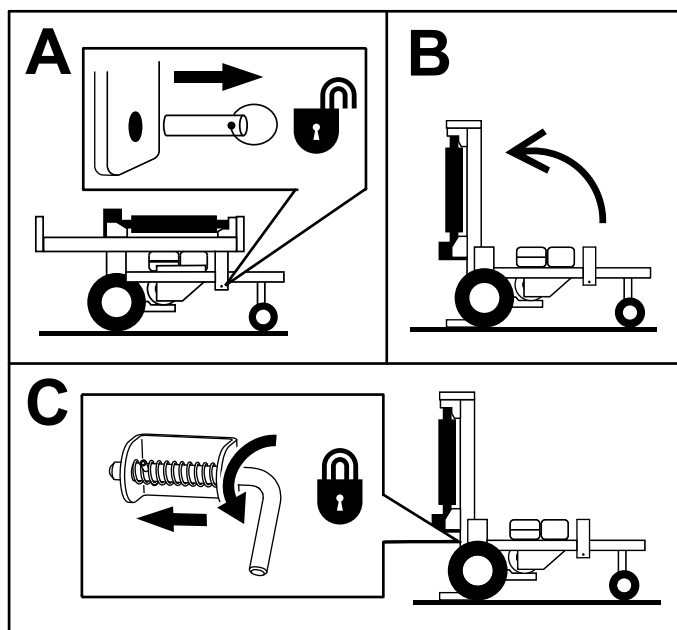


Figure 1

Installing the Kit

1. Place the support bracket on the tow pole so that it is resting against the pivot plate.
2. Mark the holes on both sides of the tow pole and remove the support bracket.

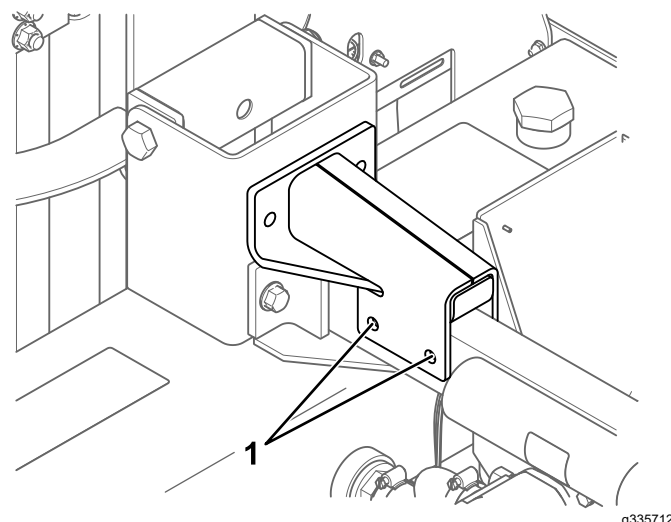


Figure 2

1. Mark and drill these holes (4)

4. Use a car jack under the engine-mounting plate and raise the machine until the front swivel wheels are off the ground. Support the machine using jack stands.



3. Remove the tow pole from the pivot bracket. Discard the fasteners.

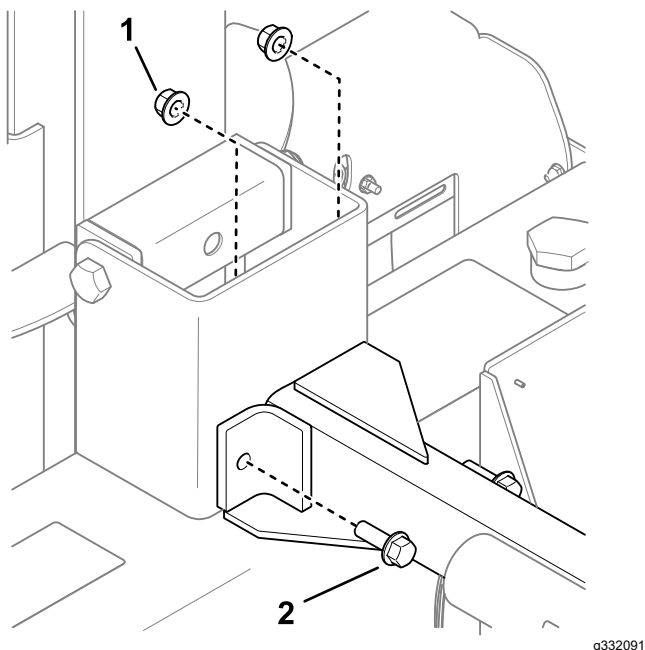


Figure 3

1. Nut (2)
2. Bolt (2)

4. Raise the tow pole and drill holes (17/32 inch diameter) at the locations marked in step 2.

⚠ WARNING

Using a drill without proper eye protection may allow debris to enter the eye, causing injury.

When drilling or carrying out other operation, always wear eye protection.

5. Secure the tow pole and a plate to the pivot bracket.

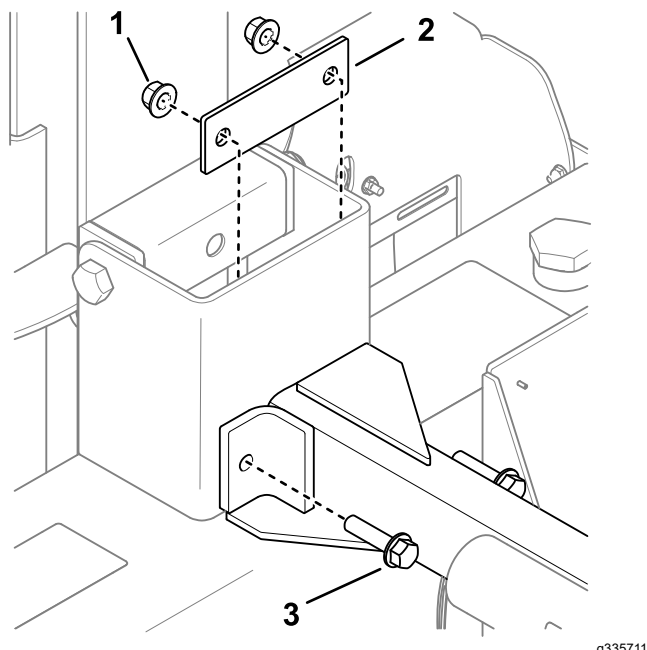


Figure 4

1. Nut—1/2 inch (2)
2. Plate
3. Bolt—1/2 x 2 inches (2)

6. Place the support bracket on the tow pole and secure it at the bottom holes.

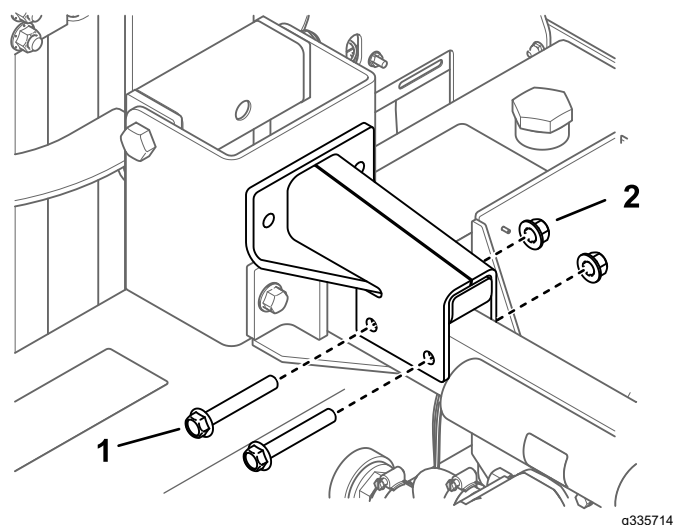


Figure 5

1. Bolt—1/2 x 3-1/2 inches (2)
2. Nut—1/2 inch (2)

7. Using the support bracket as a guide, drill 2 holes (17/32 inch diameter) into the pivot plate.

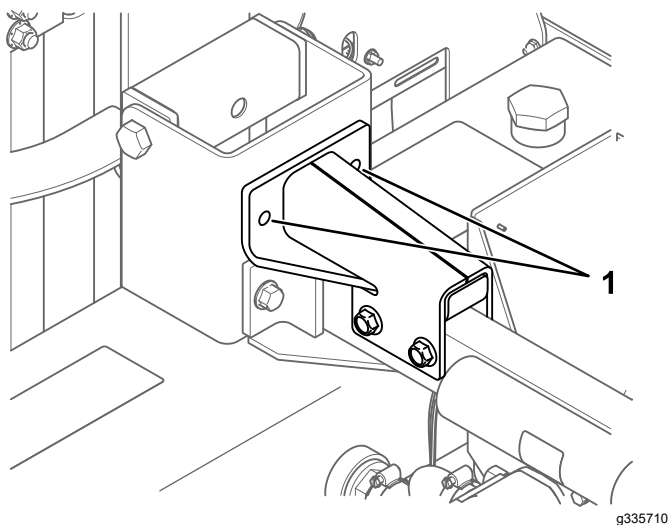


Figure 6

1. Drill here.

-
8. Secure the support bracket to the pivot plate.

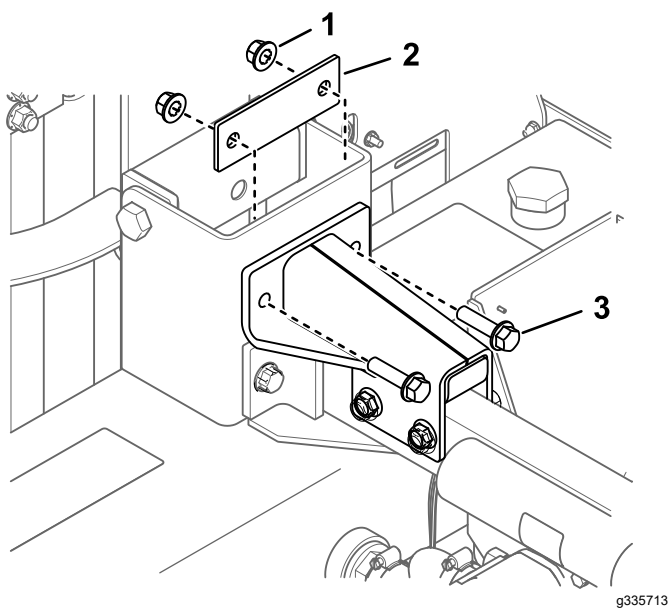


Figure 7

- | | |
|---------------------|----------------------------|
| 1. Nut—1/2 inch (2) | 3. Bolt—1/2 x 2 inches (2) |
| 2. Plate | |

-
9. Torque all 6 bolts to 142 N·m (105 ft-lb).
 10. Lower the machine so that the tow pole rests on the front wheels.
 11. Lower the rail to the horizontal position and secure it with the lock pin.
 12. Connect the spark plug wire.



Count on it.