



Air Cleaner Kit

Industrial Workman[®]

Model No. 100-9466

Parts Catalog

Ordering Replacement Parts

To order replacement parts, please supply: the part number, the quantity, and the description of each part desired.

Understanding Reference Numbers

Each identified part in an illustration has a reference number. The reference number for a part also appears in the parts list, along with other information about the part.

This catalog uses two special reference number formats, one to indicate parts in a service assembly and another to indicate the quantity of a given part in an illustration.

Service Assembly Reference Numbers

Parts in service assemblies have reference numbers in the form **a:b**. The **a** represents the reference number of the entire service assembly and the **b** represents a sequential number unique to each part within the service assembly.

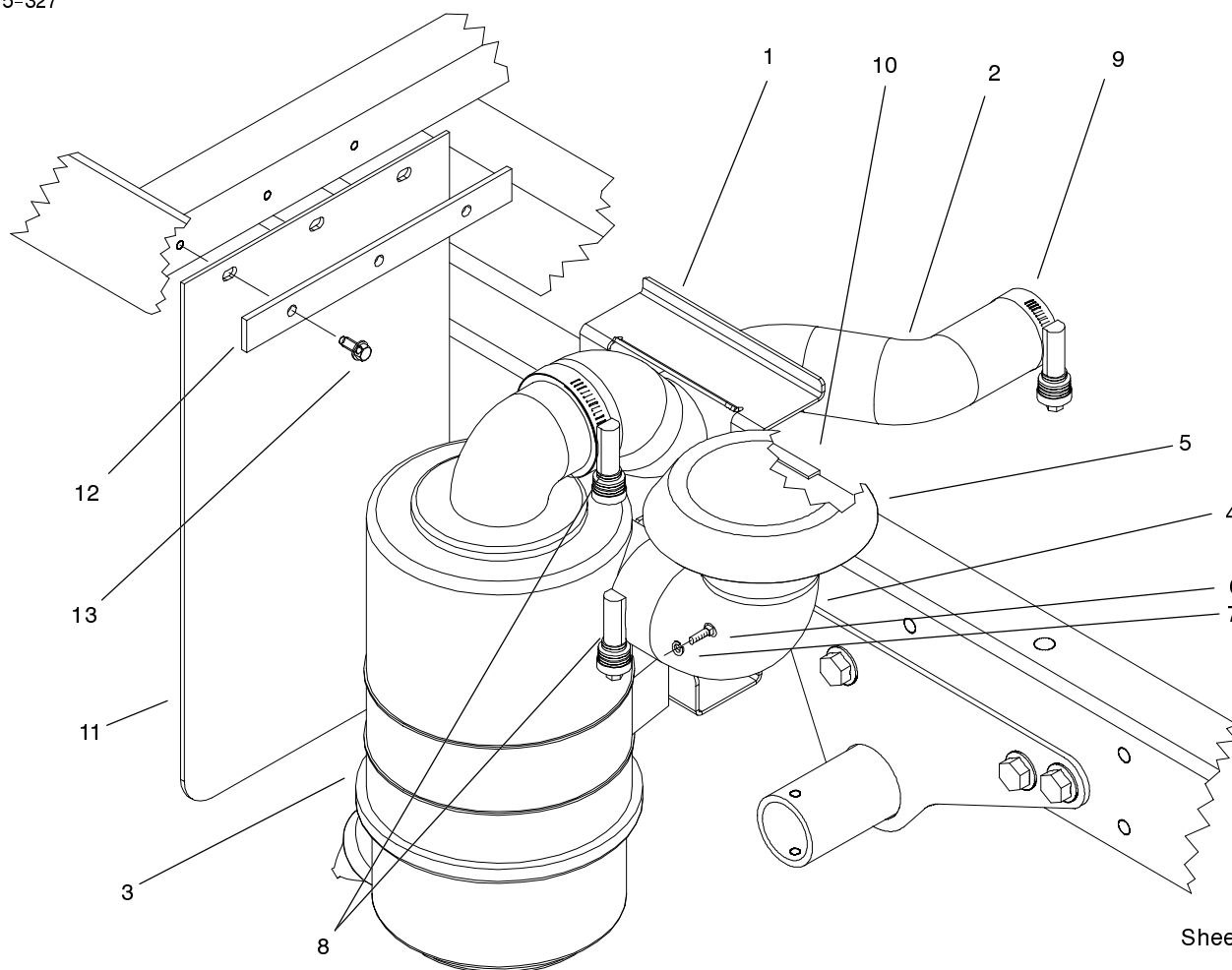
For example, a wheel assembly might be identified by reference number **6**, the tire by **6:1**, the valve by **6:2**, and the wheel by **6:3**. When you order the assembly identified by reference number **6**, you receive all parts identified by reference numbers **6:1**, **6:2**, and **6:3**. However, you may also order any part individually.

Reference numbers of this type appear in illustrations and in part lists.

Reference Numbers Indicating Quantity

In an illustration, if a reference number indicates more than one part, the reference number has the form **nX y**. The **n** represents the quantity of the part, the **X** is the multiplication symbol, and the **y** represents the reference number.

For example, in an illustration, the reference number **2X 37** means that two of the parts identified by reference number **37** are indicated.



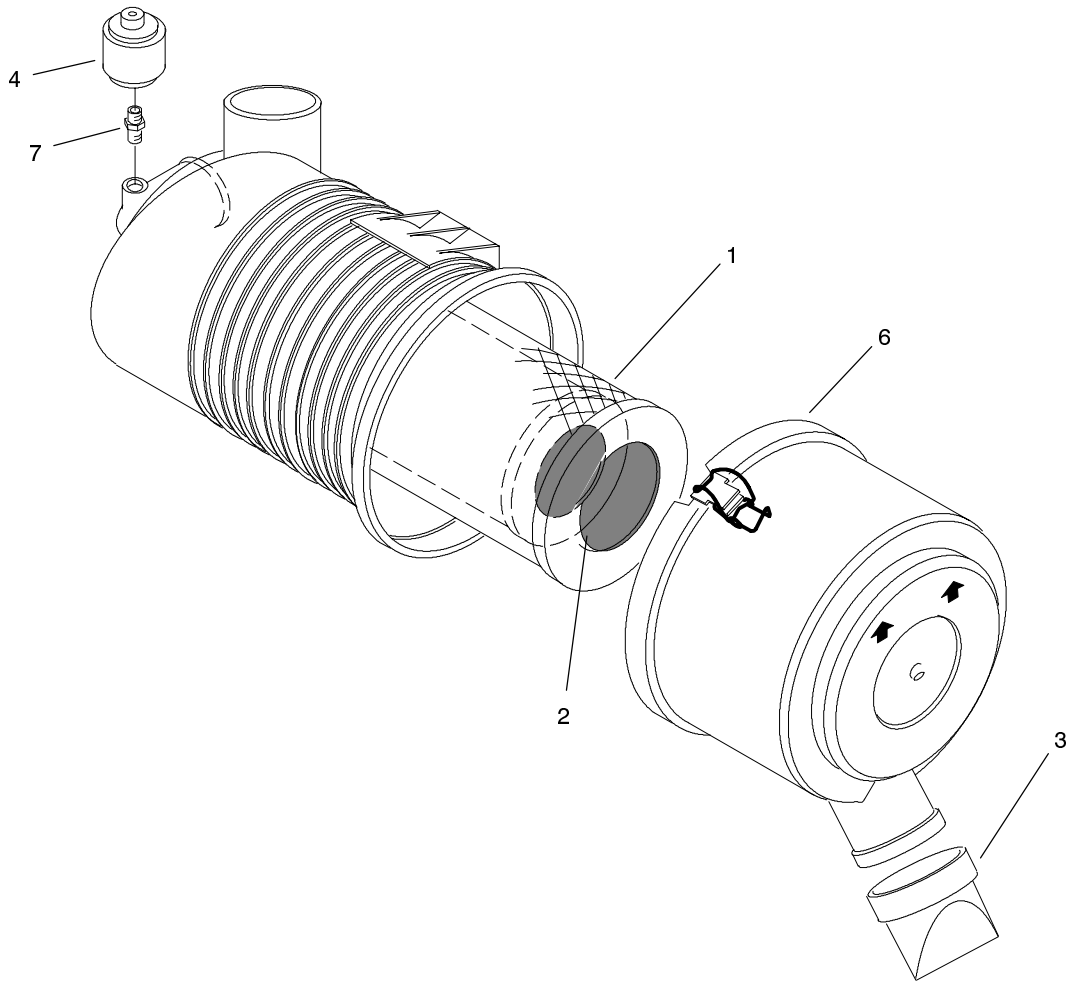
Sheet No.:0

T-3722

Air Cleaner Installation

Ref. No.	Part No.	Qty.	Description
1	104-9212	1	Mount-Air Cleaner ASM,
2	100-9450	1	Hose-Air Cleaner
3	93-7485	1	Air Filter ASM
4	100-9454	1	Elbow-Air Intake
5	100-9453	1	Hood-Air Inlet
6	33104-016	2	Screw-HHF
7	3253-4	2	Washer-Lock
8	104-9240	2	Clamp-Hose
9	104-9239	1	Clamp-Hose
10	104-9241	1	U-Channel
11	104-9242	1	Flap-Mud
12	104-9243	1	Bracket-Mud Flap
13	32144-10	3	Screw-HWH

Ref. No.	Part No.	Qty.	Description



Sheet No.:A1

T-3495

Air Cleaner Assembly

Ref. No.	Part No.	Qty.	Description
1	93-9162	1	Filter-Primary
2	93-9163	1	Filter-Secondary
3	94-1414	1	Valve-Vacuator
4	93-9164	1	Indicator - Mini (Optional)
6	93-5986	1	Cover ASM
7	94-1416	1	Adapter-Indicator ASM (Optional)

Ref. No.	Part No.	Qty.	Description

