



## Dethatcher Kit

### Reelmaster® 5500D / 6000D Series

Model No. 03871—210000001 and Up

## Parts Catalog

### Ordering Replacement Parts

To order replacement parts, please supply: the part number, the quantity, and the description of each part desired.

### Understanding Reference Numbers

Each identified part in an illustration has a reference number. The reference number for a part also appears in the parts list, along with other information about the part.

This catalog uses two special reference number formats, one to indicate parts in a service assembly and another to indicate the quantity of a given part in an illustration.

### Service Assembly Reference Numbers

Parts in service assemblies have reference numbers in the form **a:b**. The **a** represents the reference number of the entire service assembly and the **b** represents a sequential number unique to each part within the service assembly.

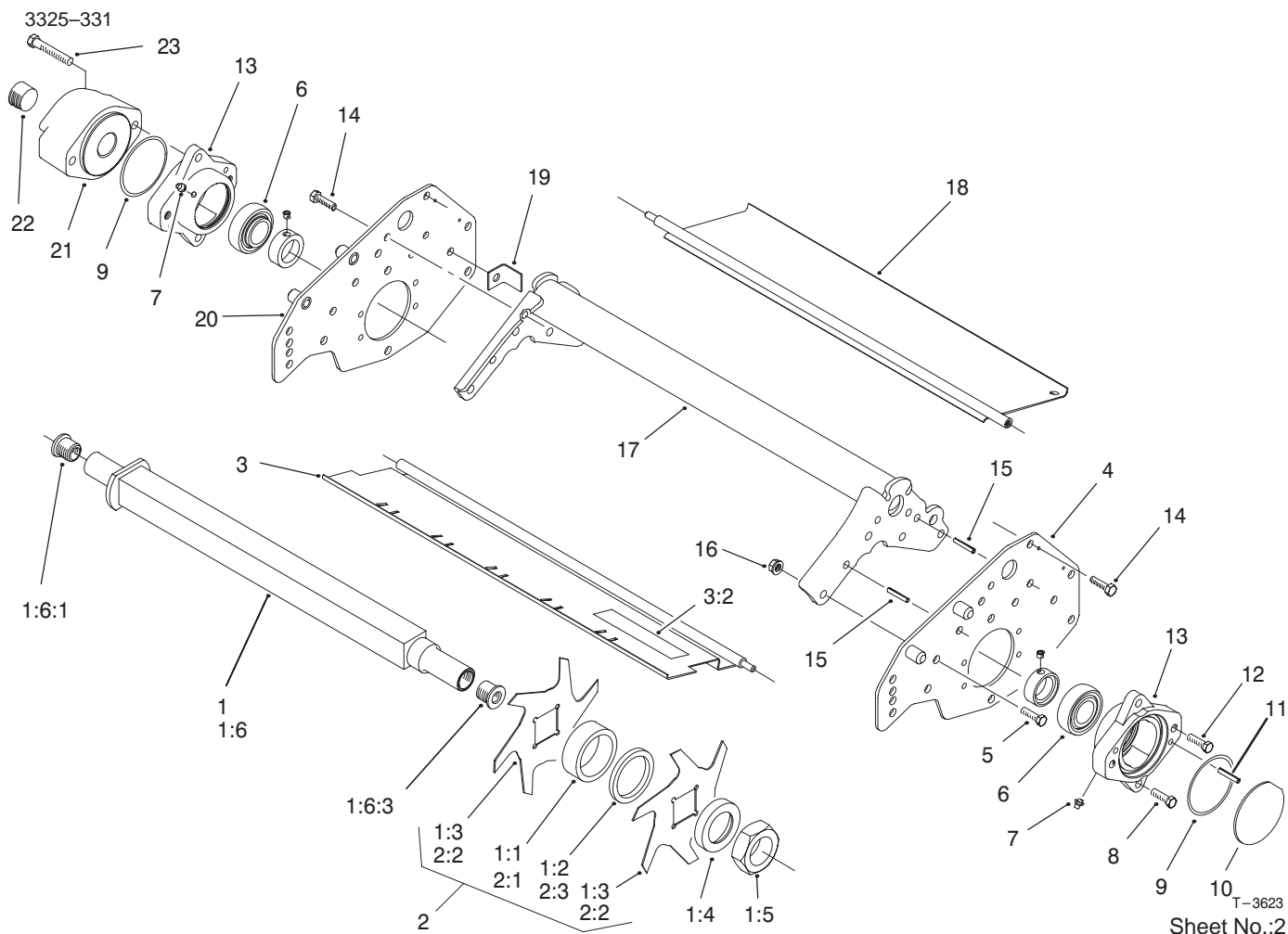
For example, a wheel assembly might be identified by reference number **6**, the tire by **6:1**, the valve by **6:2**, and the wheel by **6:3**. When you order the assembly identified by reference number **6**, you receive all parts identified by reference numbers **6:1**, **6:2**, and **6:3**. However, you may also order any part individually.

Reference numbers of this type appear in illustrations and in part lists.

### Reference Numbers Indicating Quantity

In an illustration, if a reference number indicates more than one part, the reference number has the form **nX y**. The **n** represents the quantity of the part, the **X** is the multiplication symbol, and the **y** represents the reference number.

For example, in an illustration, the reference number **2X 37** means that two of the parts identified by reference number **37** are indicated.



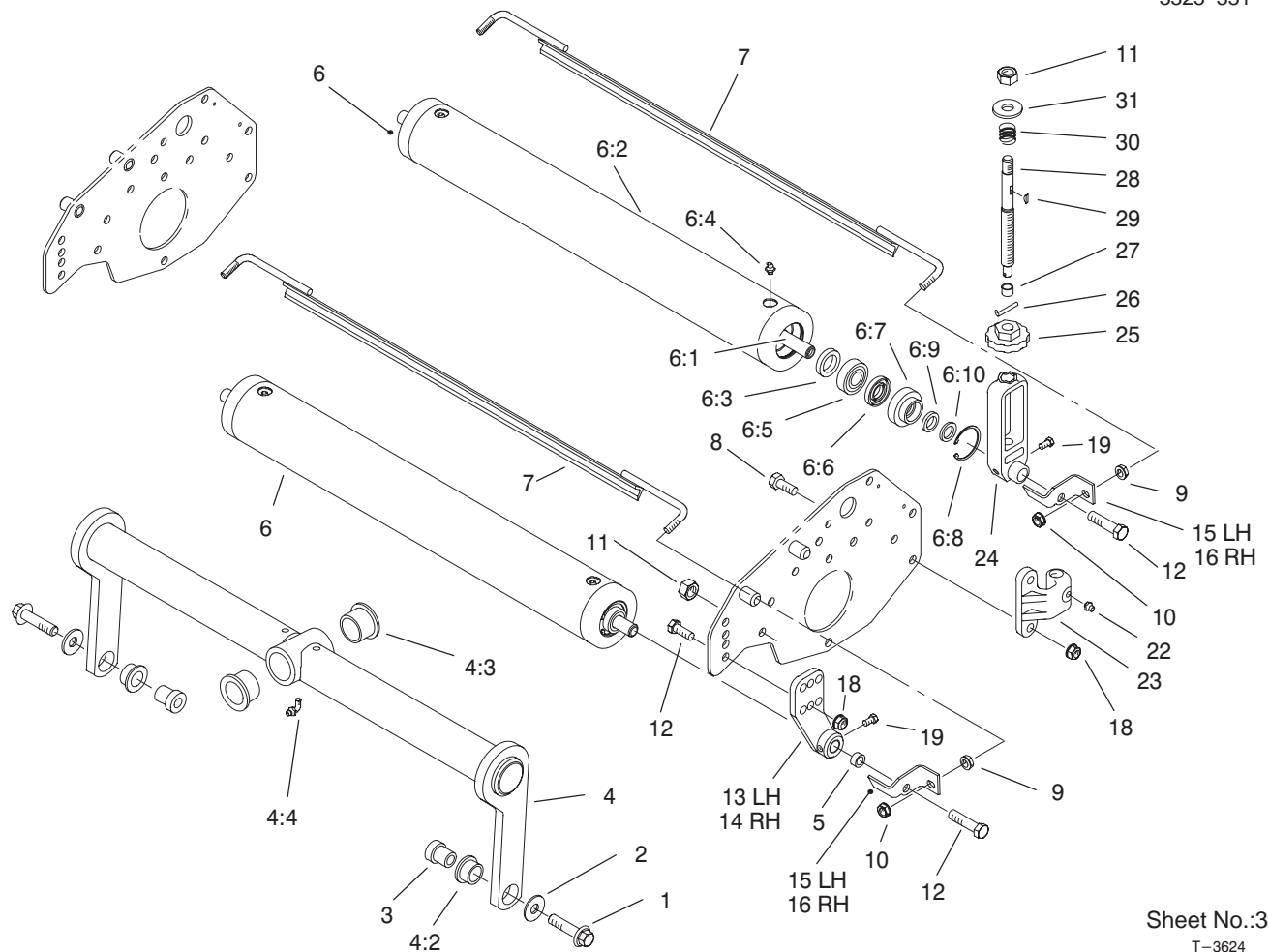
Sheet No.:2

## Reel and Frame Assembly

Ref. No.	Part No.	Qty.	Description
☆1		1	Dethatcher Shaft ASM
1:1	93-3092	15	Spacer
1:2	94-2720	15	Spacer
1:3	93-3038-03	16	Blade-Dethatcher
1:4	93-3091	1	Spacer
1:5	3218-17	1	Nut-Jam
1:6	93-2976	1	Reel Shaft ASM
1:6:1	94-2732	1	Insert-Threaded, RH
1:6:3	94-2733	1	Insert-Threaded, LH
2	94-4346	1	Dethatcher Spacer Kit
2:1	93-3092	4	Spacer
2:2	93-3038-03	4	Blade-Dethatcher
2:3	94-2720	15	Spacer
3	98-7978	1	Front Grass Shield ASM
3:2	67-7960	1	Decal-Warning
3:2	93-6688	1	Decal-Warning, Europe
3:2	94-4584	1	Decal-Warning, Japan
4	94-2719-01	1	Plate-Side, LH
5	33105-025	8	Screw-HHF
6	94-2710	2	Bearing
7	302-5	2	Fitting-Grease
8	33105-030	4	Screw-HHF
9	93-9783	2	O-Ring
10	94-2703	1	Plug

Ref. No.	Part No.	Qty.	Description
11	32121-69	4	Pin-Spring
12	93-7522	2	Screw-HH
13	94-2708	2	Housing-Bearing
14	33104-020	2	Screw-HHF
15	32121-36	4	Pin-Spring
16	33025-00	12	Nut-Lock
17	94-2709-01	1	Frame-Reel
18	93-2881-01	1	Shield-Grass, Rear
19	94-2747	1	Tab-Stop
20	94-2718-01	1	Plate-Side, RH
21	94-4347-03	1	Weight-End
22	93-8717	1	Plug-Pipe
23	33105-060	2	Screw-HHF

☆ Not serviced



Sheet No.:3

T-3624

## Shaft and Frame Assembly

Ref. No.	Part No.	Qty.	Description
1	94-2702	2	Bolt-HH
2	94-2701	2	Washer-Hardened
3	99-5716	2	Spacer-Frame
4	99-2457	1	Dethatcher Frame ASM
4:2	93-2877	2	Bushing
4:3	94-1291	2	Bushing-Special
4:4	302-60	1	Fitting-Lube
5	95-0796	2	Spacer
6	93-3040	2	3" Dia. Full Roller ASM
6:1	93-2887	1	Shaft-Roller, Front
6:2	93-3041	1	Roller Tube ASM
6:3	93-3007	2	Seal-Oil
6:4	302-5	2	Fitting-Grease
6:5	109966	2	Bearing-Ball
6:6	93-1251	2	Seal-Inner
6:7	93-1252	2	Seal-Outer
6:8	32120-62	2	Ring-Retaining
6:9	253-70	2	Seal - Oil
6:10	93-2931	2	Washer-Roller
7	94-6983-01	2	Scraper-Roller
8	33105-030	4	Screw-HHF
9	32128-20	4	Nut-HF
10	32128-25	4	Nut-Flange
11	94-4307	4	Nut-Hex Lock
12	33105-025	8	Screw-HHF

Ref. No.	Part No.	Qty.	Description
13	94-4332-01	1	Bracket-HOC, Front LH
14	94-4333-01	1	Bracket-HOC, Front RH
15	94-6979	2	Bracket-Scraper, LH
16	94-6978	2	Bracket-Scraper, RH
18	33025-00	8	Nut-Lock
19	93-9757	4	Screw-HH
22	302-5	2	Fitting-Grease
23	93-3036-01	2	Mount-HOC
24	93-3034-01	2	Bracket-HOC, Rear
25	93-3039	2	Knob-Dethatcher
26	32121-50	2	Pin-Spring
27	256-159	2	Bushing
28	93-3046	2	Shaft-HOC
29	3257-1	2	Key-Woodruff
30	94-2742	2	Spring-Compression
31	33096-00	2	Washer-flat

