



<b>Recycler Kit</b> for 72" Flex Deck Side Discharge Mower	
<b>Model No. 30838</b>	<b>Installation Instructions</b>

1. Park traction unit on a level surface, set parking brake, raise deck to highest position and stop engine. Remove the key from ignition.

**CAUTION**

**POTENTIAL HAZARD**

- If you leave the key in the ignition switch, someone could start the engine.

**WHAT CAN HAPPEN**

- Accidental starting of the engine could seriously injure you or other bystanders.

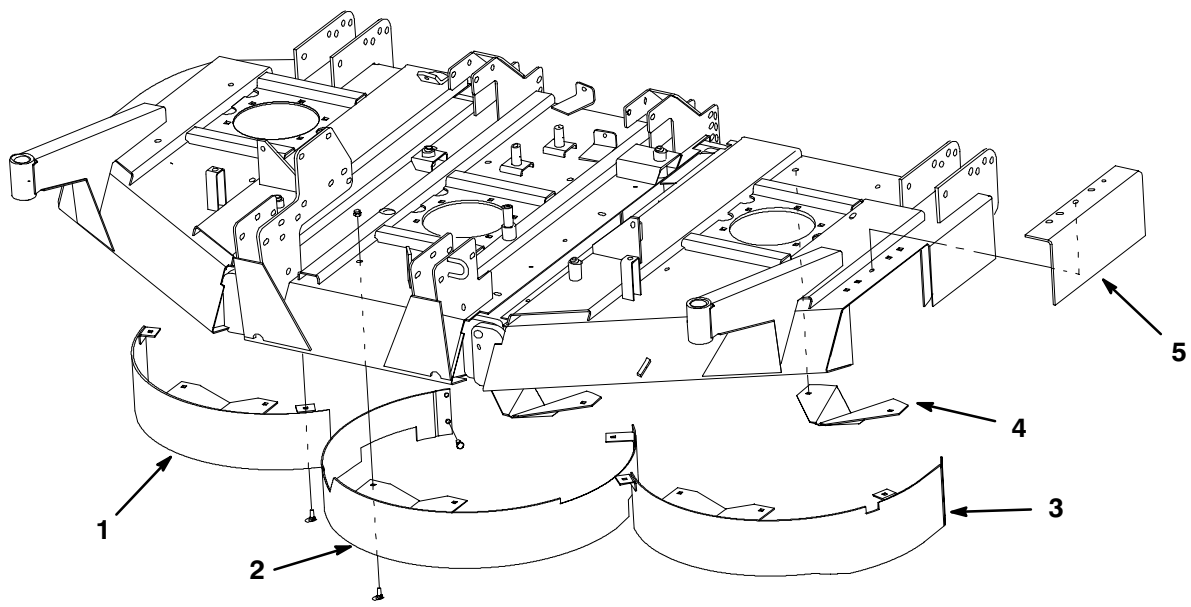
**HOW TO AVOID THE HAZARD**

- Remove the key from the ignition switch before you do any maintenance.

**Note:** One of the mounting holes for the center chamber is used to secure rubber flap strap to top of deck. Carriage bolt and nut must be removed to install chamber.

**Note:** One longer carriage bolt is required when installing left and center chambers.

2. Block up deck so it does not accidentally fall.
3. Thoroughly clean underside of deck to expose all mounting holes.
4. Position right, center and left chamber under deck, aligning mounting holes (Fig. 1).
5. Secure chambers to deck with carriage bolts and nuts. Nuts to be positioned outside deck.
6. Position kickers under deck aligning mounting holes (Fig. 1).
7. Secure kickers to deck with carriage bolts and nuts. Nuts to be positioned outside deck.
8. Remove fasteners securing deflector mounting brackets to deck. Retain deflector for future installation.
9. Mount deflector cover to deck with (4) carriage bolts and nuts removed from deflector (Fig. 1).
10. Tighten all fasteners securely.



**Figure 1**

- |                   |                 |           |                    |
|-------------------|-----------------|-----------|--------------------|
| 1. Right chamber  | 3. Left chamber | 4. Kicker | 5. Deflector cover |
| 2. Center chamber |                 |           |                    |
-