



44" Side Discharge Cutting Unit

Groundsmaster® 120

Model No. 30546—210000001 and Up

Parts Catalog

Ordering Replacement Parts

To order replacement parts, please supply: the part number, the quantity, and the description of each part desired.

Understanding Reference Numbers

Each identified part in an illustration has a reference number. The reference number for a part also appears in the parts list, along with other information about the part.

This catalog uses two special reference number formats, one to indicate parts in a service assembly and another to indicate the quantity of a given part in an illustration.

Service Assembly Reference Numbers

Parts in service assemblies have reference numbers in the form **a:b**. The **a** represents the reference number of the entire service assembly and the **b** represents a sequential number unique to each part within the service assembly.

For example, a wheel assembly might be identified by reference number **6**, the tire by **6:1**, the valve by **6:2**, and the wheel by **6:3**. When you order the assembly identified by reference number **6**, you receive all parts identified by reference numbers **6:1**, **6:2**, and **6:3**. However, you may also order any part individually.

Reference numbers of this type appear in illustrations and in part lists.

Reference Numbers Indicating Quantity

In an illustration, if a reference number indicates more than one part, the reference number has the form **nX y**. The **n** represents the quantity of the part, the **X** is the multiplication symbol, and the **y** represents the reference number.

For example, in an illustration, the reference number **2X 37** means that two of the parts identified by reference number **37** are indicated.

Contents

| Description | Page | Description | Page |
|--|------|------------------------------|------|
| Deck and Spindle Assembly | 3 | Carrier Frame Assembly | 6 |
| Covers, Gearbox, Gage and Wheel Assemblies | 5 | Decal Assembly | 7 |

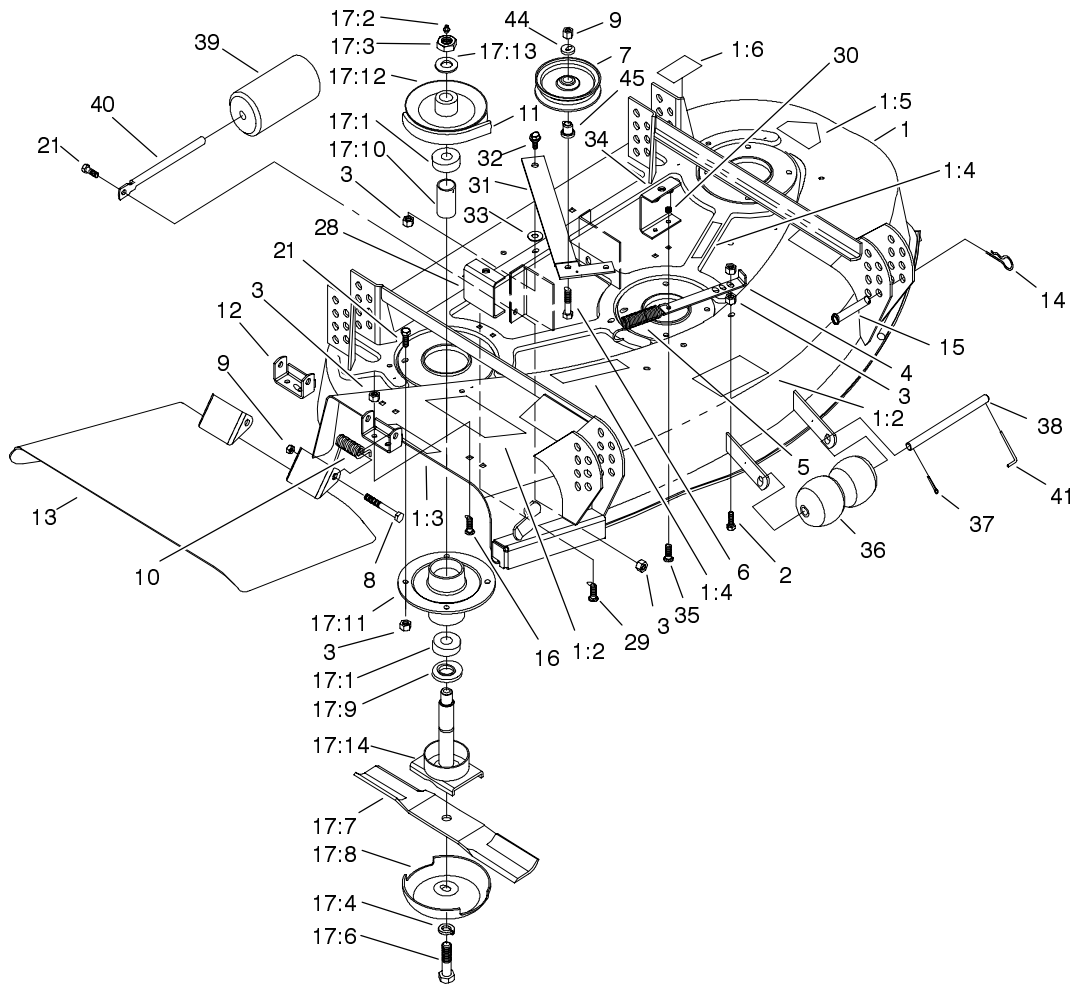
Accessories

| Description | Model / Part No. | Description | Model / Part No. |
|--|------------------|--------------------------|------------------|
| High Ball Sails (3 required for improved bagging) | 55-4940 | Blowout Baffle Kit | 60-9030 |
| Bagging System | 30751 | Leaf Mulcher Kit | 30752 |
| | | 44" Recycler Kit | 59220 |

Part Description Abbreviations

Part descriptions in this catalog may include the following abbreviations.

| Abbreviation | Meaning | Abbreviation | Meaning |
|--------------|-----------------------------------|--------------|-------------------------|
| AR | as required | HYD | hydraulic |
| ASM | assembly | INC | incorporated |
| CARR | carriage | LH | left hand |
| DEG | degrees | NI | nylon insert |
| FH | flat head | PPH | Phillips pan head |
| GA | gauge | PTH | Phillips truss head |
| HF | hex flange | PTO | power take off |
| HH | hex head | RH | right hand |
| HHF | hex head flange | SFH | slotted fillister head |
| HLH | hex lag head | SHH | slotted hex head |
| HJ | hex jam | SQH | square head |
| HOC | height-of-cut | SHWH | slotted hex washer head |
| HS | hex socket | SPH | slotted pan head |
| HSBH | hex socket button head | SRH | slotted round head |
| HSFH | hex socket flat head | STD | standard |
| HSH | hex socket head | TAP | self tapping |
| HWH | hex washer head | TTH | Torx truss head |
| HWHTF | hex washer head thread forming | WH | wing head |

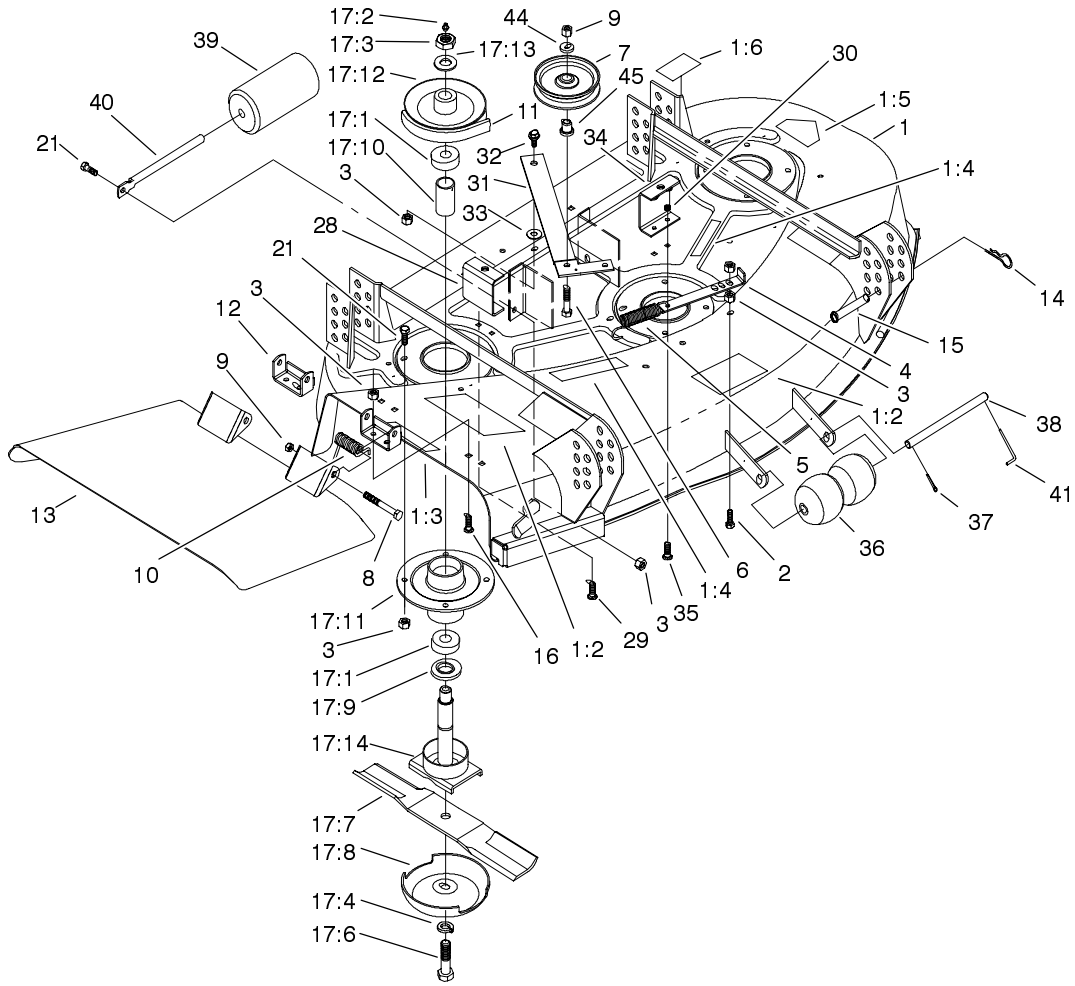


Sheet No.:2

Deck and Spindle Assembly

| Ref. No. | Part No. | Qty. | Description |
|----------|------------|------|--------------------------|
| 1 | 94-6024 | 1 | Deck |
| 1:2 | 66-1340 | 2 | Decal-Danger |
| 1:3 | 66-6380 | 1 | Decal-Danger |
| 1:4 | 67-5360 | 2 | Decal-Danger |
| 1:5 | 43-8480 | 1 | Decal-Danger |
| 1:6 | 68-8340 | 1 | Decal-Torque, Blade Bolt |
| 2 | 322-5 | 1 | Screw-HH |
| 3 | 32152-1 | 20 | Nut-Lock, NI |
| 4 | 54-1180-01 | 1 | Anchor-Spring, Deck |
| 5 | 54-1160 | 1 | Spring-Extension, Deck |
| 6 | 3211-8 | 1 | Screw-HH |
| 7 | 65-5940 | 1 | Pulley-Idler |
| 8 | 3211-15 | 2 | Screw-HH |
| 9 | 3296-5 | 3 | Nut-Lock NI |
| 10 | 40-6230 | 2 | Spring |
| 11 | 54-1370 | 1 | V-Belt-Deck |
| 12 | 29-5590-01 | 2 | Bracket-Pivot |
| 13 | 98-5049 | 1 | Deflector ASM |
| 14 | 3290-355 | 4 | Pin-Hair |
| 15 | 283-55 | 4 | Pin-Clevis |
| 16 | 3230-20 | 4 | Screw-CARR |
| 17 | 67-7660 | 3 | Spindle Housing ASM |
| 17:1 | 251-257 | 2 | Bearing |
| 17:2 | 302-2 | 1 | Fitting-Grease |

| Ref. No. | Part No. | Qty. | Description |
|----------|------------|------|-------------------|
| 17:3 | 32146-20 | 1 | Nut-Jam |
| 17:4 | 3253-8 | 1 | Washer-Lock |
| 17:6 | 51-4060 | 1 | Screw-Blade |
| 17:7 | 54-0010 | 1 | Blade |
| 17:8 | 67-7561 | 1 | Cup-Scalp, Anti |
| 17:9 | 67-7570 | 1 | Spacer-Spindle |
| 17:10 | 67-7580 | 1 | Spacer-Bearing |
| 17:11 | 67-7590 | 1 | Housing-Spindle |
| 17:12 | 67-7690-03 | 1 | Outer Pulley ASM |
| 17:13 | 7-4150 | 1 | Washer-Pinion |
| 17:14 | 71-2780 | 1 | Shaft-Spindle |
| 21 | 322-4 | 13 | Screw-HH |
| 28 | 55-7050-03 | 1 | Bracket-Cover, RH |
| 29 | 3229-11 | 2 | Screw-CARR |
| 30 | 3296-16 | 4 | Nut-Lock, NI |
| 31 | 55-7430-01 | 1 | Lever-Deck |
| 32 | 19-1470 | 1 | Screw-Shoulder |
| 33 | 23-1120 | 1 | Washer |
| 34 | 55-7060-03 | 1 | Bracket-Cover, LH |
| 35 | 3229-3 | 2 | Screw-CARR |
| 36 | 29-4820 | 2 | Roller |
| 37 | 3272-11 | 1 | Pin-Cotter |
| 38 | 40-6400 | 1 | Shaft-Roller |
| 39 | 36-1740 | 1 | Roller-Deck |
| 40 | 62-4480 | 1 | Rod-Roller |
| 41 | 57-0690 | 1 | Pin-Special |

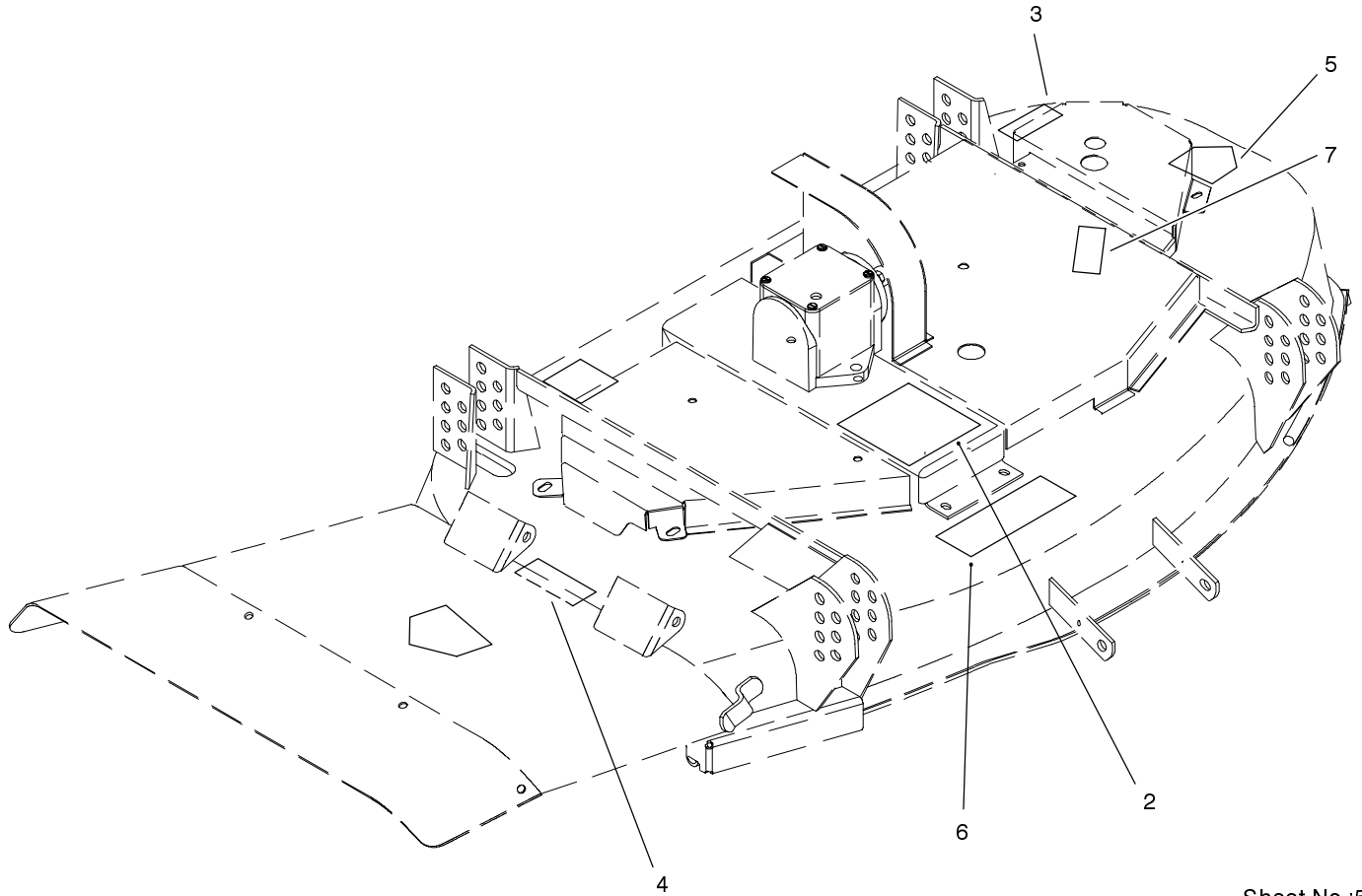


Sheet No.:2

Deck and Spindle Assembly (Continued)

| Ref. No. | Part No. | Qty. | Description |
|----------|----------|------|----------------|
| 44 | 7-0081 | 1 | Washer-Flat |
| 45 | 65-5950 | 1 | Bushing-Pulley |

| Ref. No. | Part No. | Qty. | Description |
|----------|----------|------|-------------|
| | | | |



Sheet No.:5
C-3008

Decal Assembly

| Ref. No. | Part No. | Qty. | Description |
|----------|----------|------|--------------------------|
| 2 | 54-2760 | 1 | 44" Decal |
| 3 | 93-7818 | 1 | Decal-Torque, Blade Bolt |
| 4 | 93-7828 | 1 | Decal-Danger, Int'l |
| 5 | 93-7316 | 2 | Decal - Danger |
| 6 | 93-7824 | 1 | Decal-Danger, Int'l |
| 7 | 93-7273 | 2 | Decal-Danger |

| Ref. No. | Part No. | Qty. | Description |
|----------|----------|------|-------------|
| | | | |
| | | | |
| | | | |
| | | | |
| | | | |
| | | | |
| | | | |
| | | | |
| | | | |
| | | | |

