



# 52" Side Discharge Mower

## Groundsmaster<sup>®</sup> 120

Model No. 30753—210000001 and Up

### Parts Catalog

---

#### Ordering Replacement Parts

To order replacement parts, please supply: the part number, the quantity, and the description of each part desired.

#### Understanding Reference Numbers

Each identified part in an illustration has a reference number. The reference number for a part also appears in the parts list, along with other information about the part.

This catalog uses two special reference number formats, one to indicate parts in a service assembly and another to indicate the quantity of a given part in an illustration.

#### Service Assembly Reference Numbers

Parts in service assemblies have reference numbers in the form **a:b**. The **a** represents the reference number of the entire service assembly and the **b** represents a sequential number unique to each part within the service assembly.

For example, a wheel assembly might be identified by reference number **6**, the tire by **6:1**, the valve by **6:2**, and the wheel by **6:3**. When you order the assembly identified by reference number **6**, you receive all parts identified by reference numbers **6:1**, **6:2**, and **6:3**. However, you may also order any part individually.

Reference numbers of this type appear in illustrations and in part lists.

#### Reference Numbers Indicating Quantity

In an illustration, if a reference number indicates more than one part, the reference number has the form **nX y**. The **n** represents the quantity of the part, the **X** is the multiplication symbol, and the **y** represents the reference number.

For example, in an illustration, the reference number **2X 37** means that two of the parts identified by reference number **37** are indicated.

## Contents

<b>Description</b>	<b>Page</b>	<b>Description</b>	<b>Page</b>
Deck And Spindle Assembly .....	3	Carrier Frame Assembly .....	6
Deck Assembly No. 94-6025 .....	4	Spindle Assembly No. 27-0871 .....	7
Covers, Gearbox And Gage Wheel Assembly .	5		

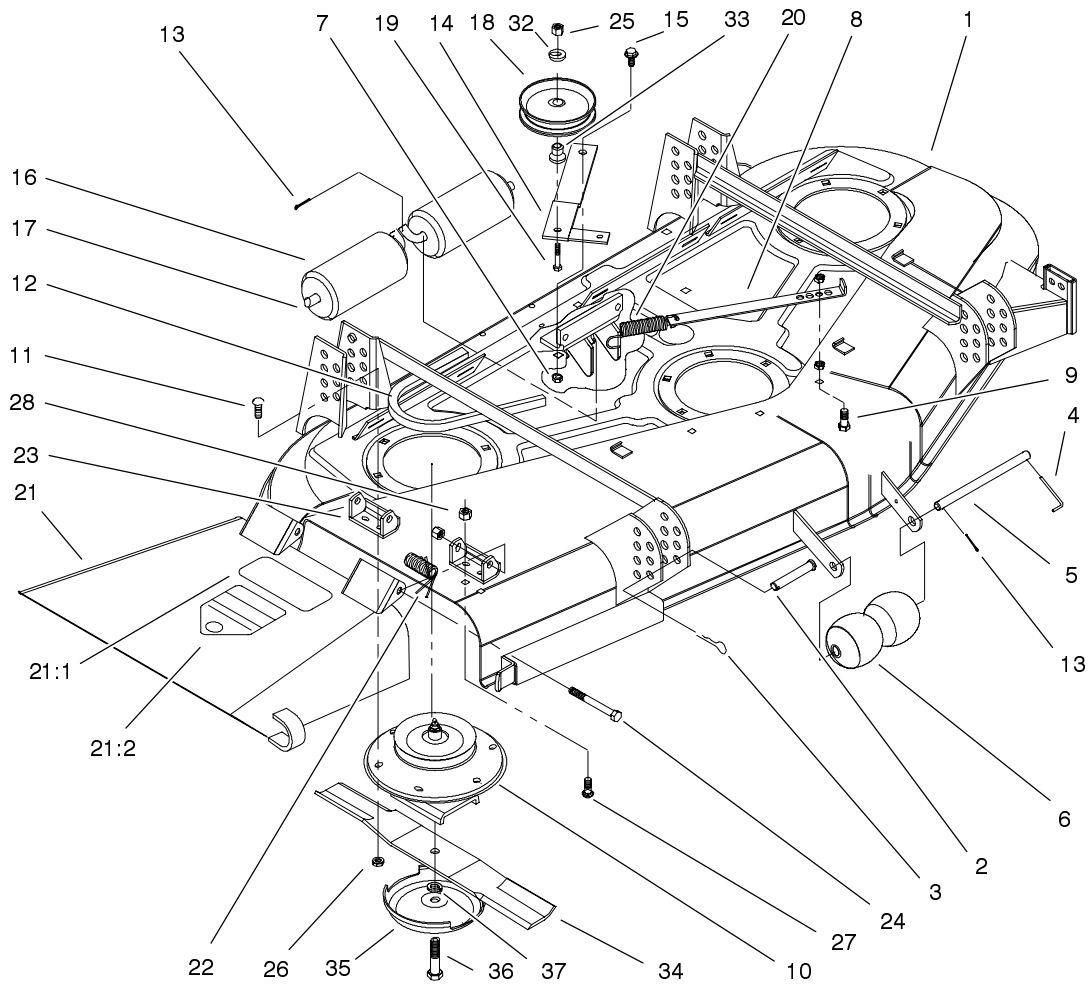
## Accessories

<b>Description</b>	<b>Model / Part No.</b>	<b>Description</b>	<b>Model / Part No.</b>
Blade High Sail (3) .....	56-2390	Blower Baffle Kit .....	68-7210
Bagging Kit .....	30576	52" Recycler Kit .....	59225
Leaf Mulcher Kit .....	30700		

## Part Description Abbreviations

Part descriptions in this catalog may include the following abbreviations.

<b>Abbreviation</b>	<b>Meaning</b>	<b>Abbreviation</b>	<b>Meaning</b>
AR .....	as required	HYD .....	hydraulic
ASM .....	assembly	INC .....	incorporated
CARR .....	carriage	LH .....	left hand
DEG .....	degrees	NI .....	nylon insert
FH .....	flat head	PPH .....	Phillips pan head
GA .....	gauge	PTH .....	Phillips truss head
HF .....	hex flange	PTO .....	power take off
HH .....	hex head	RH .....	right hand
HHF .....	hex head flange	SFH .....	slotted fillister head
HLH .....	hex lag head	SHH .....	slotted hex head
HJ .....	hex jam	SQH .....	square head
HOC .....	height-of-cut	SHWH .....	slotted hex washer head
HS .....	hex socket	SPH .....	slotted pan head
HSBH .....	hex socket button head	SRH .....	slotted round head
HSFH .....	hex socket flat head	STD .....	standard
HSH .....	hex socket head	TAP .....	self tapping
HWH .....	hex washer head	TTH .....	Torx truss head
HWHTF .....	hex washer head thread forming	WH .....	wing head

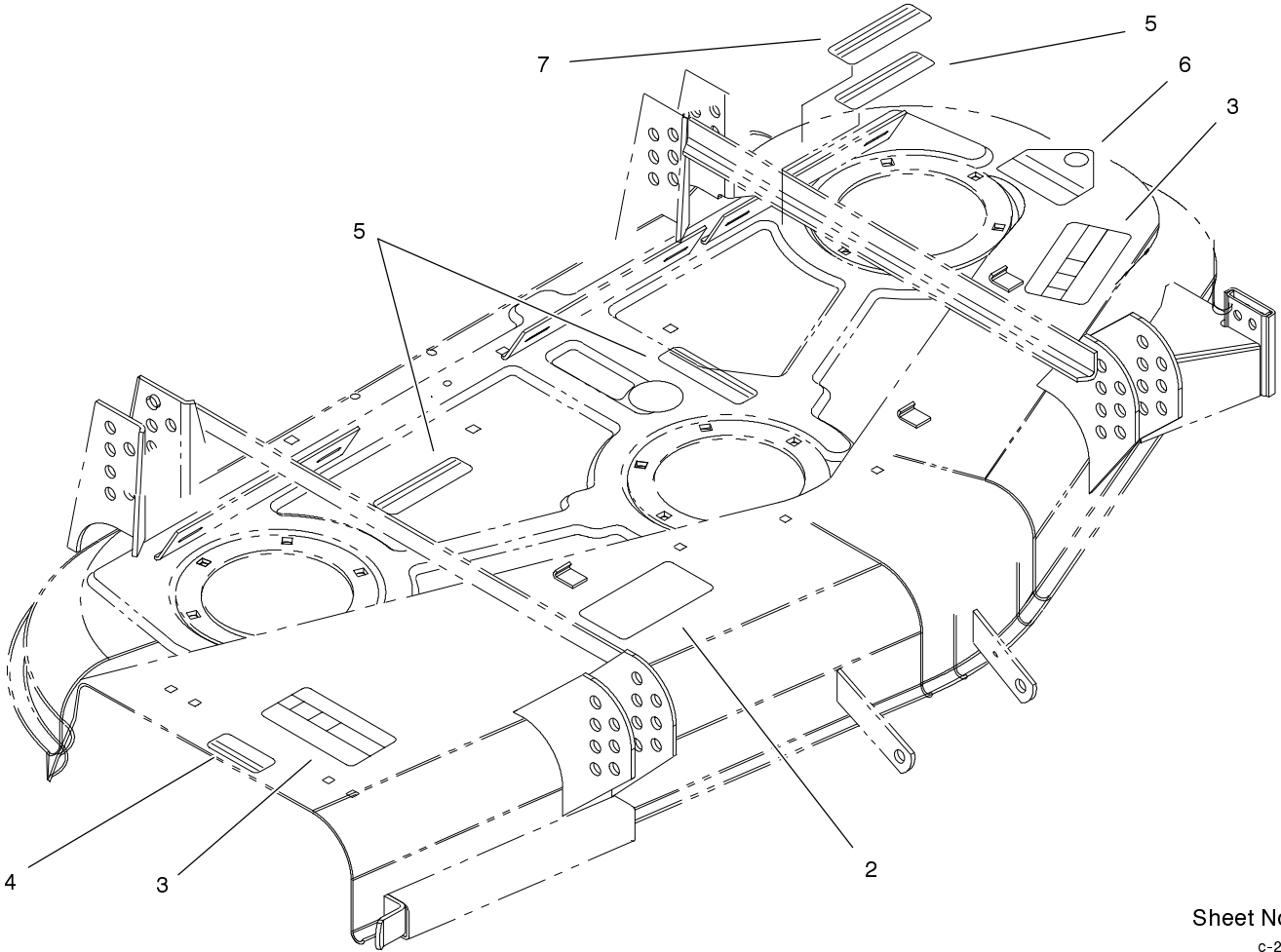


Sheet No.:2

## Deck And Spindle Assembly

Ref. No.	Part No.	Qty.	Description
1	94-6025	1	Deck-ASM
2	283-55	4	Pin-Clevis
3	3290-355	4	Pin-Hair
4	57-0690	1	Pin-Special
5	40-6400	1	Shaft-Roller
6	29-4820	2	Roller
7	3296-29	3	Nut-Lock
8	56-5540-01	1	Anchor-Deck Spring
9	3230-22	1	Screw-CARR
10	27-0871	3	Spindle ASM
11	3231-22	18	Screw-CARR
12	56-5560	1	V-Belt, Deck
13	3272-11	3	Pin-Cotter
14	56-5520-01	1	Lever-Idler
15	19-1470	1	Screw-Shoulder
16	36-1740	2	Roller-Deck
17	40-0340	2	Shaft-Roller, Rear
18	65-5940	1	Pulley-Idler
19	3211-8	1	Screw-HH
20	54-1160	1	Spring-Extension, Deck
21	94-1580	1	Deflector ASM
21:1	92-7108	1	Decal-Danger
21:2	93-1122	1	Decal-Danger
22	40-6230	2	Spring
23	29-5590-01	2	Bracket-Pivot

Ref. No.	Part No.	Qty.	Description
24	3211-15	2	Screw-HH
25	3296-5	3	Nut-Lock NI
26	32128-21	18	Nut-HF
27	3230-18	4	Screw-CARR
28	32152-1	4	Nut-Lock, NI
32	7-0081	1	Washer-Flat
33	65-5950	1	Bushing-Pulley
34	27-0990	3	Blade
35	72-9361	3	Cup-Scalp, Anti
36	44-2200	3	Bolt-Blade
37	3253-27	3	Washer-Lock

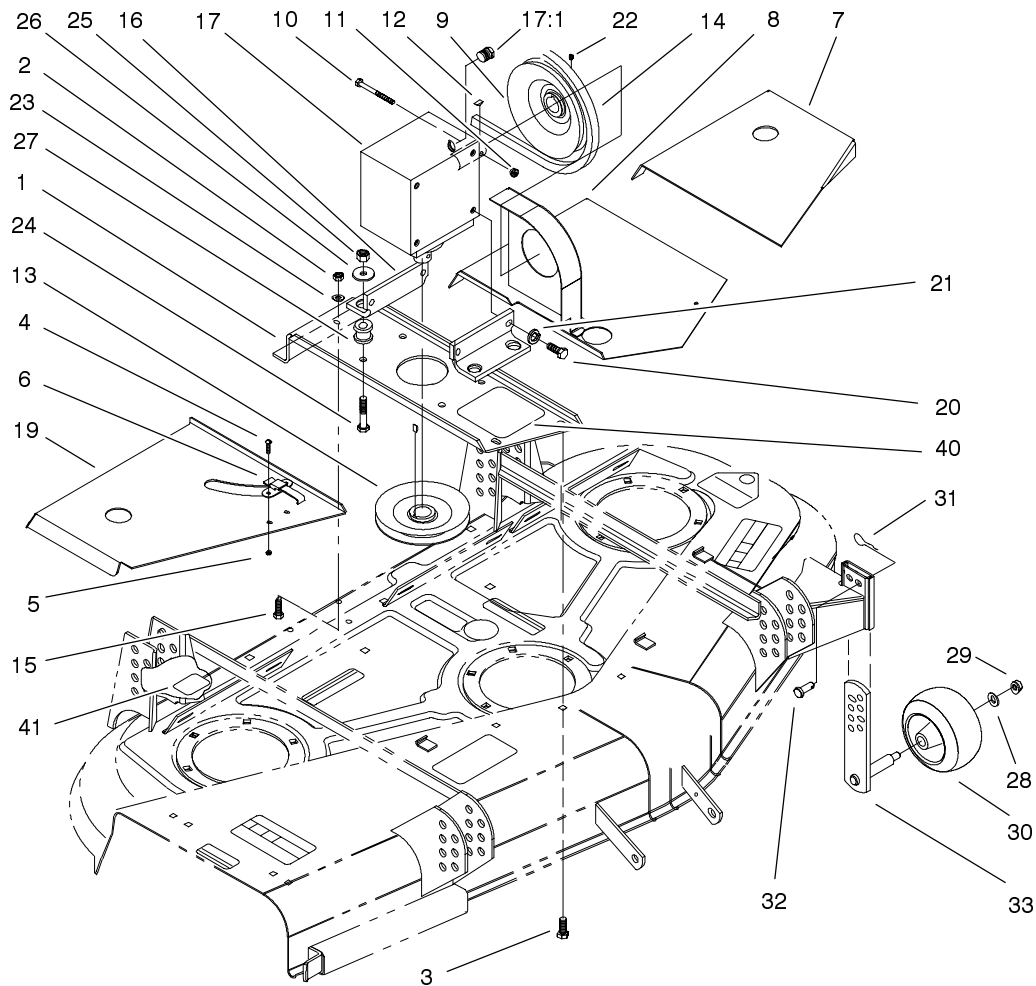


Sheet No.:A1  
c-2796

## Deck Assembly No. 94-6025

Ref. No.	Part No.	Qty.	Description
2	68-7260	1	Decal-Warning
3	66-1340	2	Decal-Danger
4	66-6380	1	Decal-Danger
5	67-5360	3	Decal-Danger
6	43-8480	1	Decal-Danger
7	68-8340	1	Decal-Torque, Blade Bolt

Ref. No.	Part No.	Qty.	Description



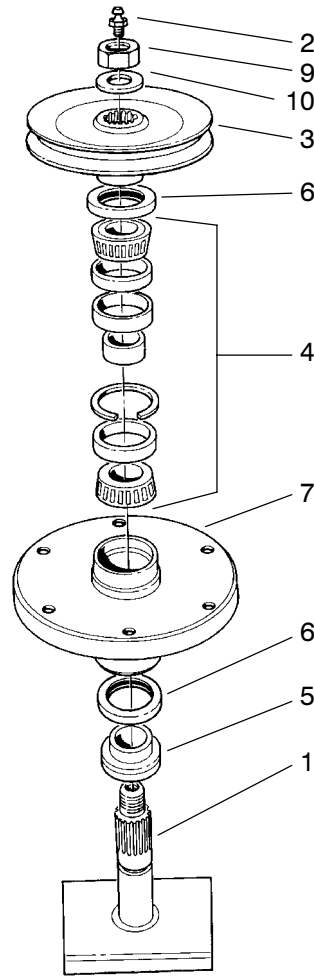
Sheet No.:3

## Covers, Gearbox And Gage Wheel Assembly

Ref. No.	Part No.	Qty.	Description
1	63-9820-01	1	Base-Mounting, Gearbox
2	3296-29	4	Nut-Lock
3	3230-10	2	Screw-CARR
4	3290-321	6	Screw-HWH
5	32128-17	6	Nut-Lock, Flange
6	249-21	3	Clamp-Slotted
7	56-5580-01	1	Cover-Deck, LH
8	56-5590-01	1	Cover-Deck, Center
9	62-5940	1	Pulley
10	321-18	2	Screw-HH
11	3296-16	2	Nut-Lock, NI
12	3257-14	2	Key
13	62-5410	1	Pulley
14	56-5570	1	V-Belt, Deck
15	322-4	2	Screw-HH
16	63-9810-01	2	Bracket-Mounting, Gearbox
17	53-4600-01	1	Gear Box
17:1	104-1339	1	Vent-Breather
19	56-5610-01	1	Cover-Deck, RH
20	323-4	4	Screw-HH
21	3253-21	4	Washer-Lock
22	3241-1	2	Screw-Set
23	3256-3	4	Washer-Flat
24	323-8	4	Screw-HH

Ref. No.	Part No.	Qty.	Description
25	32153-2	4	Nut-Lock
26	63-8410	4	Washer
27	63-9750	4	Mount
28	3256-24	1	Washer-Flat
29	3296-39	1	Nut-Lock, NI
30	68-2730	1	Gage-Wheel
31	3290-467	1	Pin-Hair
32	283-2	1	Pin-Clevis
33	68-2350	1	Gage-Wheel
40	51-3960	1	Decal-52
41	88-1270	1	Decal-Safety STD





Sheet No.:0  
T-0111

### Spindle Assembly No. 27-0871

Ref. No.	Part No.	Qty.	Description
1	27-0920	1	Shaft-Spindle
2	302-2	1	Fitting-Grease
3	56-2510-03	1	Pulley ASM
4	46-8530	1	Bearing ASM
5	27-0950	1	Spacer-Bearing, Spindle
6	253-139	2	Seal-Oil
7	61-4160	1	Housing-Spindle
9	32146-20	1	Nut-Jam
10	92-5836	1	Washer-Axle

Ref. No.	Part No.	Qty.	Description

