



# Four-Spool Hydraulic Valve Kit

## Dingo<sup>®</sup> Compact Utility Loader

Model No. 104-7422

## Parts Catalog

---

### Ordering Replacement Parts

To order replacement parts, please supply: the part number, the quantity, and the description of each part desired.

### Understanding Reference Numbers

Each identified part in an illustration has a reference number. The reference number for a part also appears in the parts list, along with other information about the part.

This catalog uses two special reference number formats, one to indicate parts in a service assembly and another to indicate the quantity of a given part in an illustration.

### Service Assembly Reference Numbers

Parts in service assemblies have reference numbers in the form **a:b**. The **a** represents the reference number of the entire service assembly and the **b** represents a sequential number unique to each part within the service assembly.

For example, a wheel assembly might be identified by reference number **6**, the tire by **6:1**, the valve by **6:2**, and the wheel by **6:3**. When you order the assembly identified by reference number **6**, you receive all parts identified by reference numbers **6:1**, **6:2**, and **6:3**. However, you may also order any part individually.

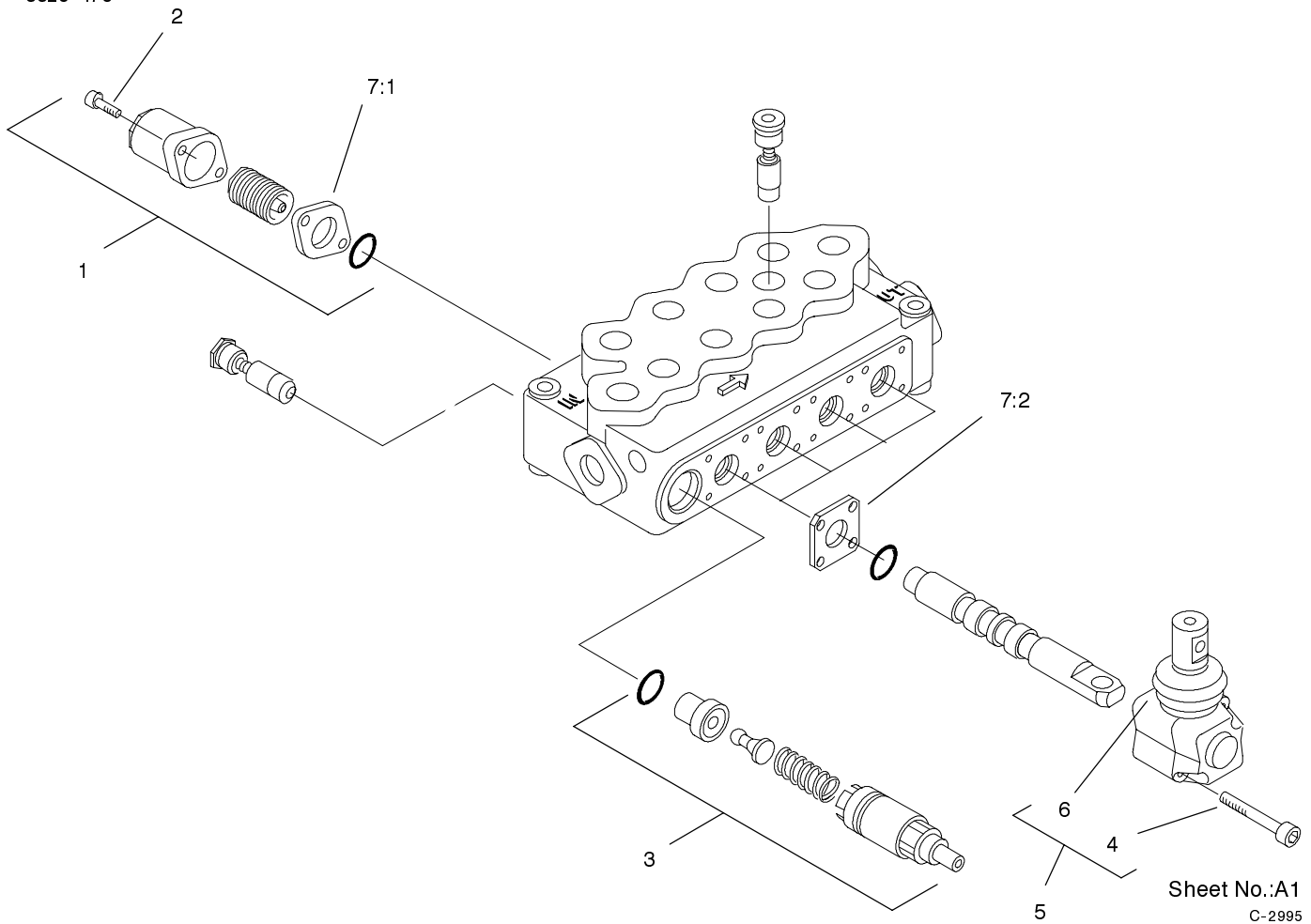
Reference numbers of this type appear in illustrations and in part lists.

### Reference Numbers Indicating Quantity

In an illustration, if a reference number indicates more than one part, the reference number has the form **nX y**. The **n** represents the quantity of the part, the **X** is the multiplication symbol, and the **y** represents the reference number.

For example, in an illustration, the reference number **2X 37** means that two of the parts identified by reference number **37** are indicated.

3325-476



## Four-Spool Hydraulic Valve Assembly

Ref. No.	Part No.	Qty.	Description
1	100-8800	4	Standard Spring ASM
1	100-8801	4	Kit-Spring, High Force
2	100-8802	8	Screw-Cap, End
3	100-8805	1	Valve-Relief
4	100-8806	8	Screw-Operator
5	100-8807	4	Operator ASM
6	100-8829	4	Boot-Operator
7	99-4390	1	Kit-Seal, Sd5
7:1	99-3074	4	Gasket
7:2	99-3075	4	Gasket

Ref. No.	Part No.	Qty.	Description