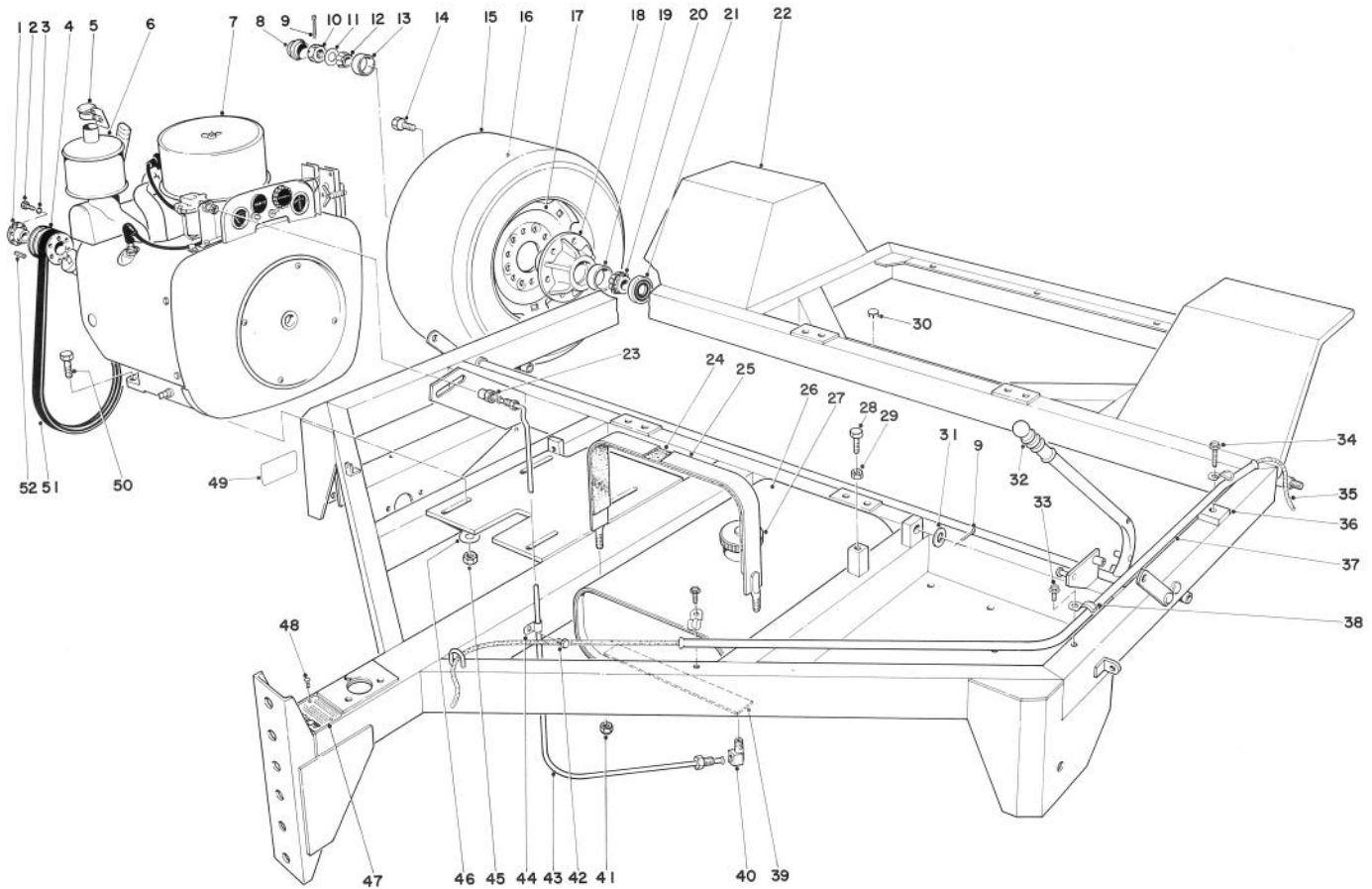


TORO®

MODEL 07073 — 40001 & UP *ENGINE*
 MODEL 07174 — 40001 & UP *PTO*

PARTS CATALOG

66" RAKE-O-VAC® SWEEPER



ENGINE AND FRAME ASSEMBLY (Model 07073)

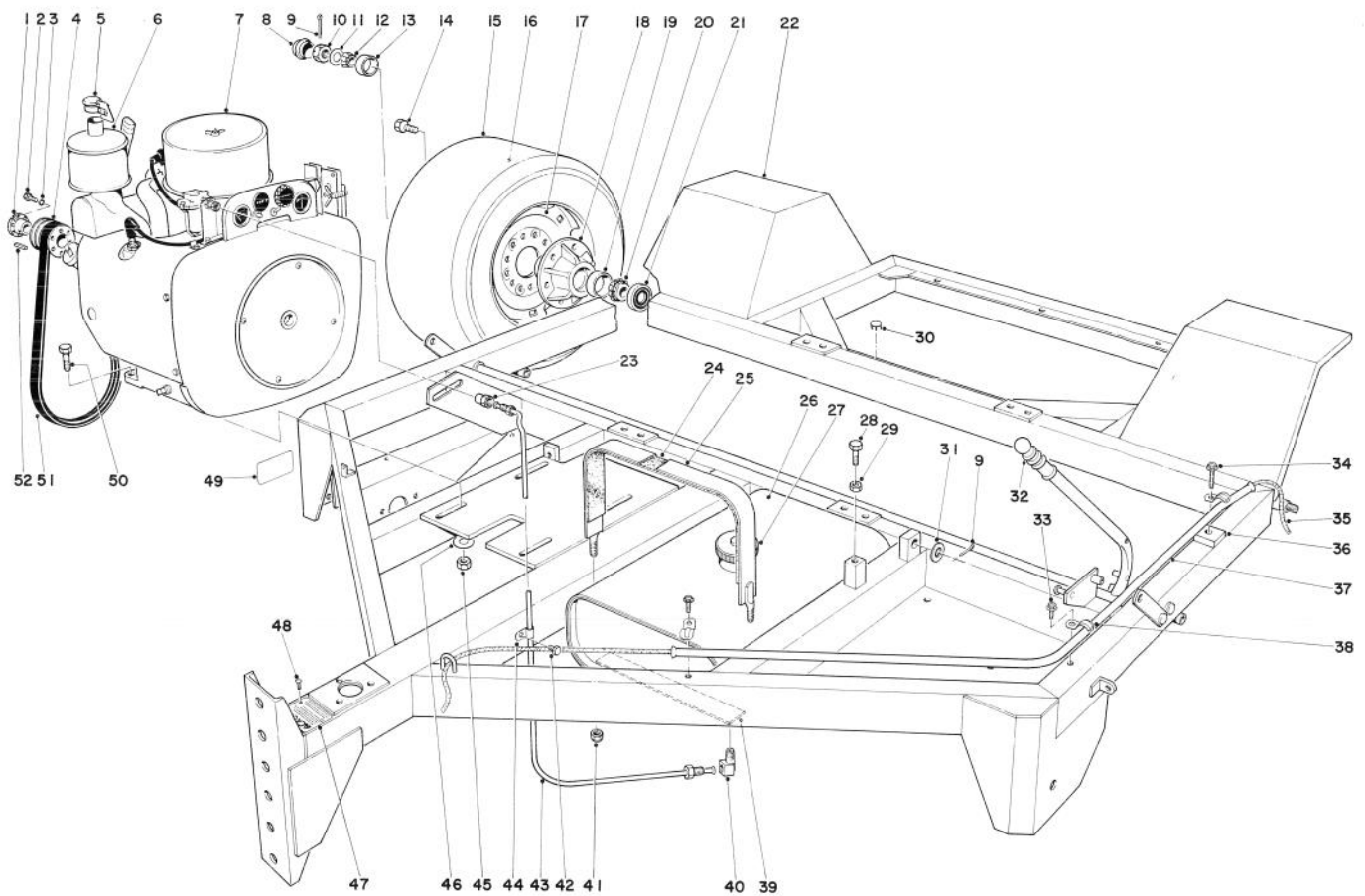
Ref. No.	Part No.	Description	No. Used	Ref. No.	Part No.	Description	No. Used
1	13-3330	Bushing	1	16	232-34	Tube	2
2	321-10	Capscrew	3	17	241-117	Rim	2
3	3253-6	Lockwasher	3	18	242-54	Hub (Incl. Ref. No's. 13 & 19)	2
4	13-3320	Pulley	1	19	254-66	Bearing Cup	2
5	13-6710	Muffler Weather Cap	1	20	254-65	Bearing Cone	2
6	13-6720	Muffler	1	21	253-127	Seal	2
7	221-404	Engine	1	22	13-5000	Main Frame	1
8	242-55	Hub Cap	2	23	353-406	Straight Fitting	1
9	3272-17	Cotter Pin	3	24	13-3950	Felt Strip	2
10	32136-1	Slotted Nut	2	25	13-3960	Strap Asm. (Incl. Ref. 24)	2
11	3256-29	Flat Washer	2	26	13-3930	Gas Tank	1
12	254-62	Bearing Cone	2	27	222-21	Gas Cap	1
13	254-61	Bearing Cup	2	28	323-8	Capscrew	1
14	217-103	Wheel Bolt	12	29	3218-3	Jam Nut	1
15	231-76	Tire	2	30	2410-13	Plug Button	2

Copyright 1974 by

The Toro Company

Bloomington, Minnesota 55420 U.S.A.

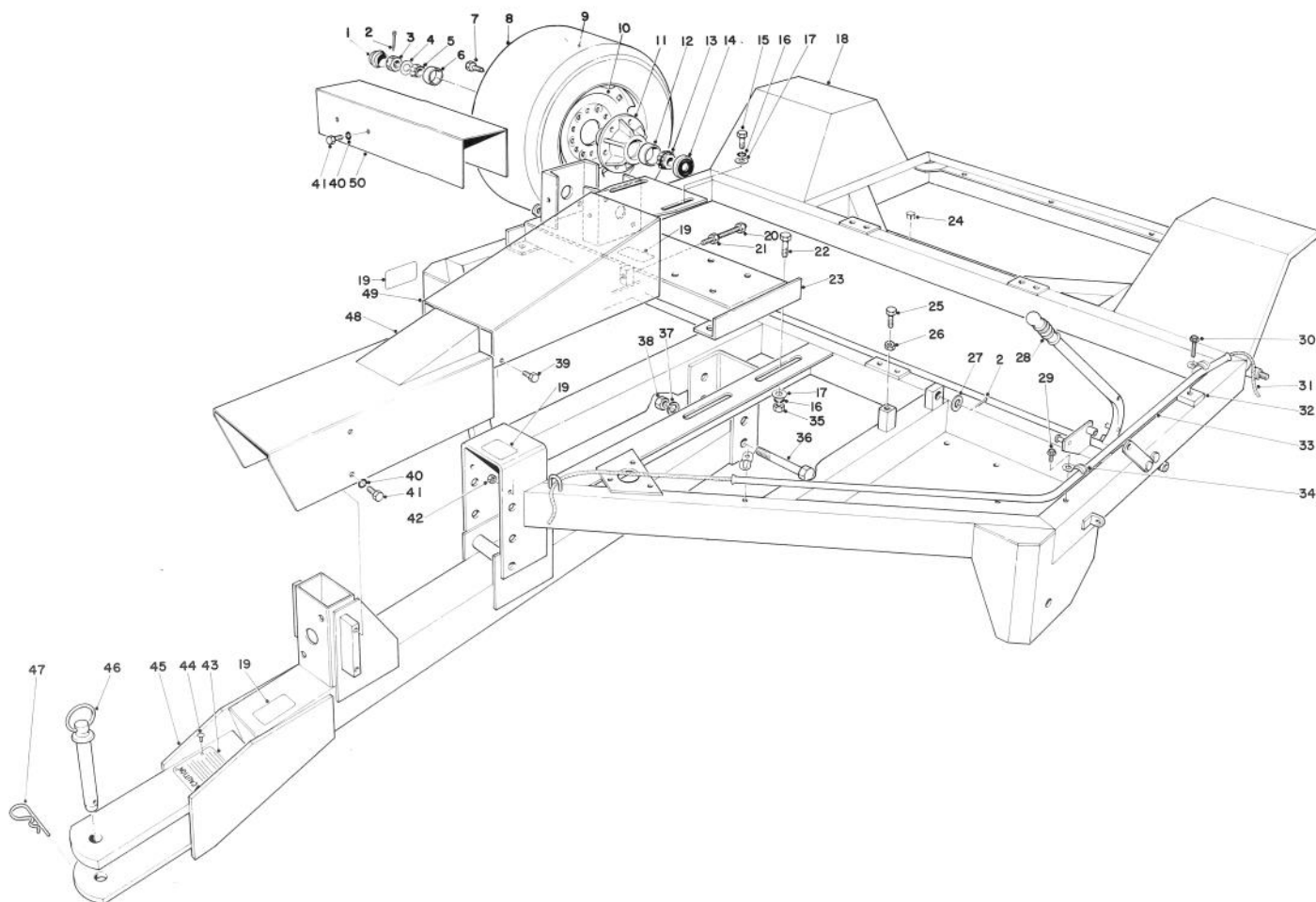
Price \$1.00



ENGINE AND FRAME ASSEMBLY (Model 07073)(Continued)

Ref. No.	Part No.	Description	No. Used
31	3256-28	Flat Washer	1
32	235-15	Handle Grip	1
33	32104-95	Screw, Self Tapping	2
34	32104-96	Screw, Self Tapping	1
35	20-9580	Rope	1
36	13-6910	Rope Guide Spacer	1
37	13-6890	Rope Guide	1
38	2412-40	Conduit Clamp	3
39	13-3970	Felt Strip	2
40	353-407	Tube Fitting	1
41	3296-29	Lock Nut	4

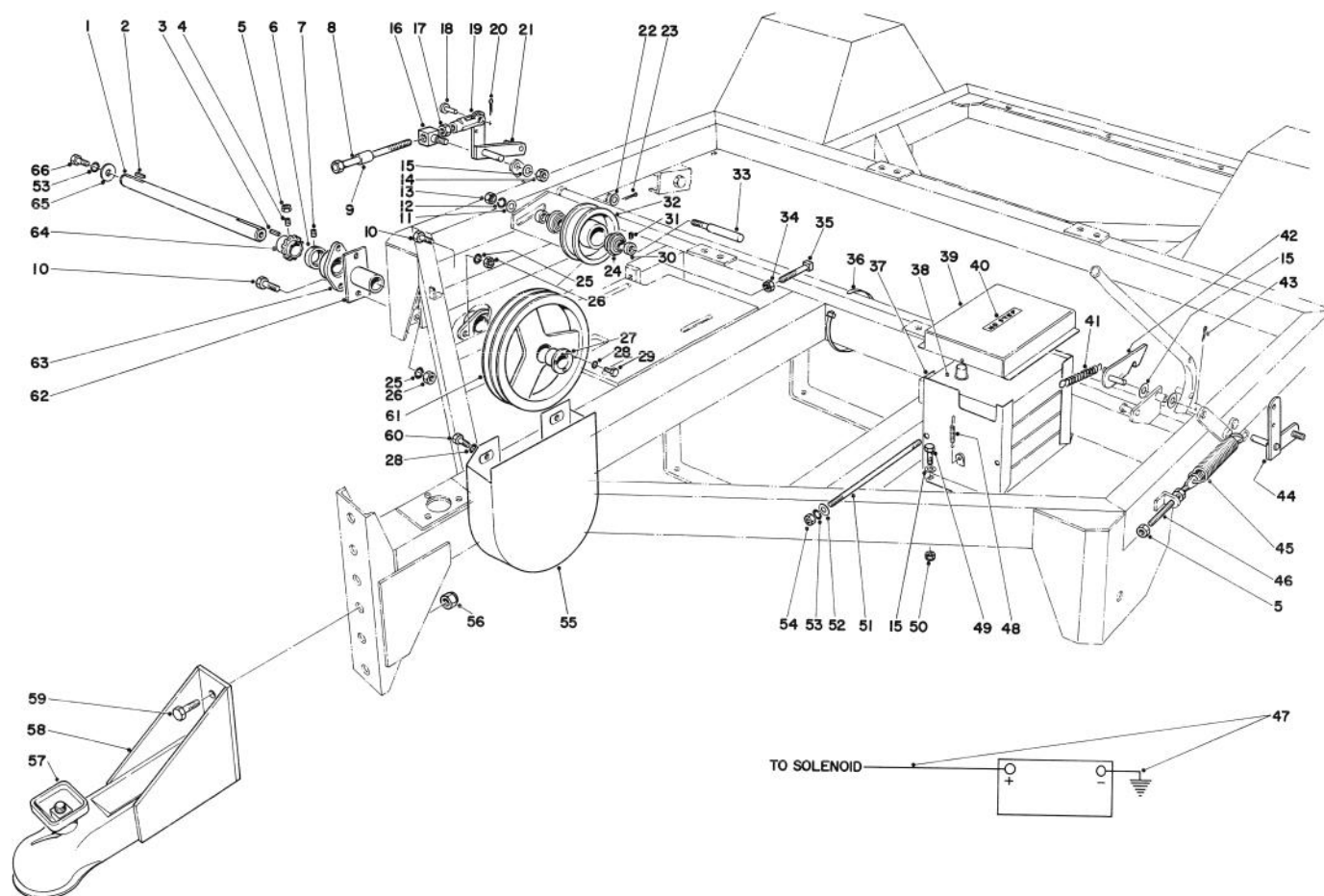
Ref. No.	Part No.	Description	No. Used
42	32104-109	Screw	1
43	13-5010	Gas Line	1
44	2412-32	Clip	1
45	3296-23	Lock Nut	4
46	3256-26	Flat Washer	4
47	13-7460	Caution Plate	1
48	3290-55	Pop Rivet	4
49	13-6470	Decal	1
50	325-7	Capscrew	4
51	13-2650	V-Belt	1
52	3-9155	Square Key	1



FRAME ASSEMBLY (Model 07174)

Ref. No.	Part No.	Description	No. Used
1	242-55	Hub Cap	2
2	3272-17	Cotter Pin	3
3	32136-1	Slotted Nut	2
4	3256-29	Flat Washer	2
5	254-62	Bearing Cone	2
6	254-61	Bearing Cup	2
7	217-103	Wheel Bolts	12
8	231-76	Tire	2
9	232-34	Tube	2
10	241-117	Rim	2
11	242-54	Wheel Hub (Incl. Ref. No. 6 & 12)	2
12	254-66	Bearing Cup	2
13	254-65	Bearing Cone	2
14	253-127	Seal	2
15	325-3	Capscrew	2
16	3253-7	Lockwasher	6
17	3256-26	Flat Washer	6
18	13-6120	Frame	1
19	13-6470	Caution Decal	4
20	13-6240	Adjustment Rod	1
21	3218-6	Jam Nut	1
22	325-5	Capscrew	4
23	13-6000	Gear Box Base	1
24	2410-13	Plug Button	2
25	323-8	Capscrew	1

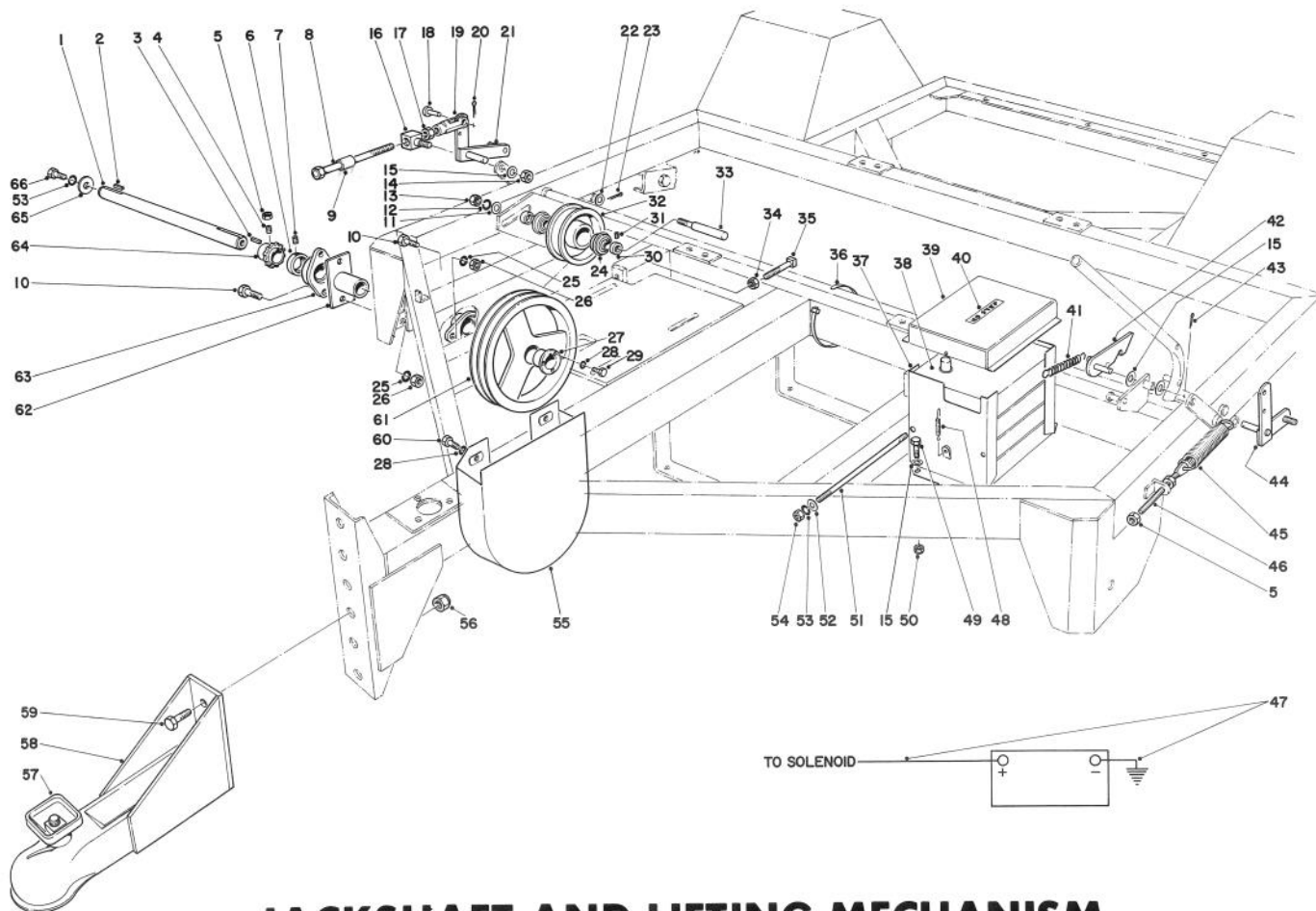
Ref. No.	Part No.	Description	No. Used
26	3218-3	Jam Nut	1
27	3256-28	Flat Washer	1
28	235-15	Handle Grip	1
29	32104-95	Screw, Self-Tapping	2
30	32104-96	Screw, Self-Tapping	1
31	20-9580	Rope	1
32	13-6910	Rope Guide Spacer	1
33	13-6890	Rope Guide	1
34	2412-40	Conduit Clamp	3
35	3217-9	Nut	4
36	328-23	Bolt	2
37	3253-9	Lockwasher	2
38	3217-12	Nut	2
39	323-5	Capscrew	2
40	3253-21	Lockwasher	8
41	323-2	Capscrew	8
42	32146-2	Nut	2
43	13-7460	Caution Plate	1
44	3259-15	Drive Screw	4
45	13-4310	Tongue	1
46	13-6200	Hitch Pin (Incl. Ref. 47)	1
47	3290-343	Hair Pin Cotter	1
48	13-5870	Front Shield	1
49	13-5880	Drop Shaft Shield	1
50	13-5790	Shaft Shield	1



JACKSHAFT AND LIFTING MECHANISM (Model 07073)

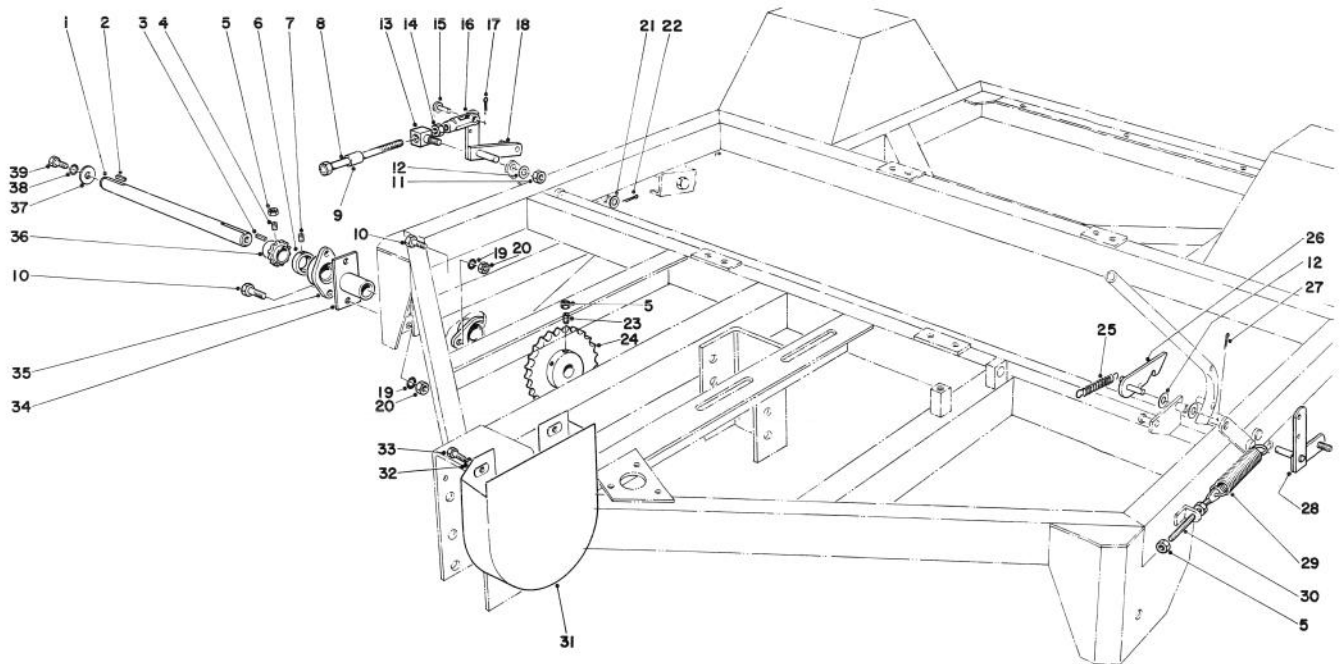
Ref. No.	Part No.	Description	No. Used
1	13-3740	Jack Shaft	1
2	13-2840	Square Key	1
3	13-6330	Square Key	1
4	3247-3	Set Screw	2
5	3218-3	Jam Nut	6
6	251-234	Locking Collar	2
7	3246-2	Set Screw	2
8	13-6260	Adjustment Screw	2
9	13-5520	Spacer	2
10	324-7	Capscrew	4
11	3256-26	Flat Washer	1
12	3253-7	Lockwasher	1
13	3217-9	Nut	1
14	32153-2	Lock Nut	2
15	3256-24	Flat Washer	6
16	13-0100	Pivot Block	2
17	3219-3	Nut	2
18	283-35	Clevis Pin	2
19	282-22	Clevis	2
20	3272-6	Cotter Pin	2
21	13-5490	Lifting Bell Crank R.H.	1
22	3256-28	Flat Washer	2
23	3272-22	Cotter Pin	2

Ref. No.	Part No.	Description	No. Used
24	251-235	Bearing with Collar	2
25	3253-6	Lockwasher	4
26	3217-8	Lock Nut	4
27	13-2680	Bushing	1
28	3253-4	Lockwasher	5
29	322-10	Capscrew	3
30	251-236	Locking Collar	2
31	3245-36	Set Screw	2
32	13-0600	Idler Pulley (Incl. Ref. 24, 30 & 31)	1
33	13-0510	Idler Pin	1
34	3218-5	Nut	1
35	3244-21	Set Screw	1
36	3290-336	Locking Strap	2
37	3-5967	Battery Support	2
38	13-6480	Battery	1
39	3-3175	Battery Cover	1
40	3-5582	Decal	1
41	13-0480	Spring	1
42	13-3990	Trip Handle	1
43	3272-10	Cotter Pin	1
44	13-5500	Lifting Bell Crank L.H.	1
45	13-0050	Spring	2



JACKSHAFT AND LIFTING MECHANISM (Model 07073) (Continued)

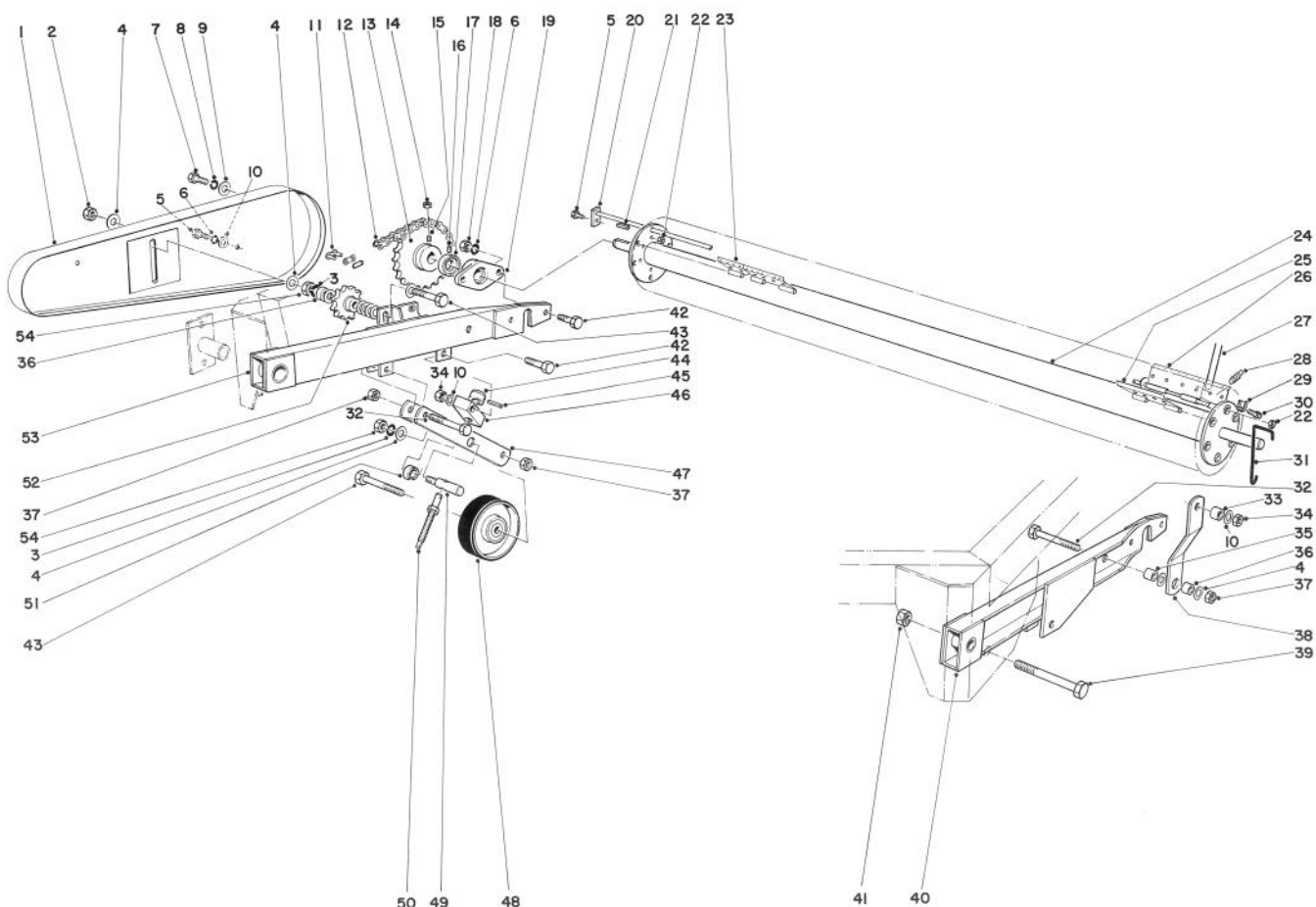
Ref. No.	Part No.	Description	No. Used	Ref. No.	Part No.	Description	No. Used
46	13-5530	Spring Adjustment Rod	2	57	13-3080	Ball Coupler Kit	1
47	13-6790	Battery Cable	2	58	13-0060	Hitch Yoke (Incl. Ref. 57)	1
48	3-8135	Spring	2	59	327-6	Capscrew	2
49	323-7	Capscrew	4	60	322-7	Capscrew	2
50	3296-39	Lock Nut	4	61	13-2670	Sheave	1
51	5-0678	Battery Clamp Rod	2	62	13-0160	Drive Side Spindle	1
52	3256-22	Flat Washer	4	63	251-244	Bearing with Collar	2
53	3253-3	Lockwasher	5	64	13-4340	Sprocket	1
54	3217-5	Nut	4	65	13-3710	Washer	1
55	13-4490	Sheave Guard	1	66	321-4	Capscrew	1
56	3296-53	Lock Nut	2				



JACKSHAFT AND LIFTING MECHANISM (Model 07174)

Ref. No.	Part No.	Description	No. Used
1	13-3740	Jackshaft	1
2	13-2840	Square Key	1
3	5-1718	Square Key	1
4	3247-3	Set Screw	2
5	3218-3	Jam Nut	8
6	251-234	Lock Collar	2
7	3246-2	Set Screw	2
8	13-6260	Adjustment Bolt	2
9	13-5520	Spacer	2
10	324-7	Capscrew	4
11	32153-2	Nut	2
12	3256-24	Flat Washer	4
13	13-0100	Pivot Block	2
14	3219-3	Nut	2
15	283-35	Clevis Pin	2
16	282-22	Clevis	2
17	3272-6	Cotter Pin	2
18	13-5490	Lifting Bell Crank R.H.	1
19	3253-6	Lockwasher	4
20	3217-8	Nut	4

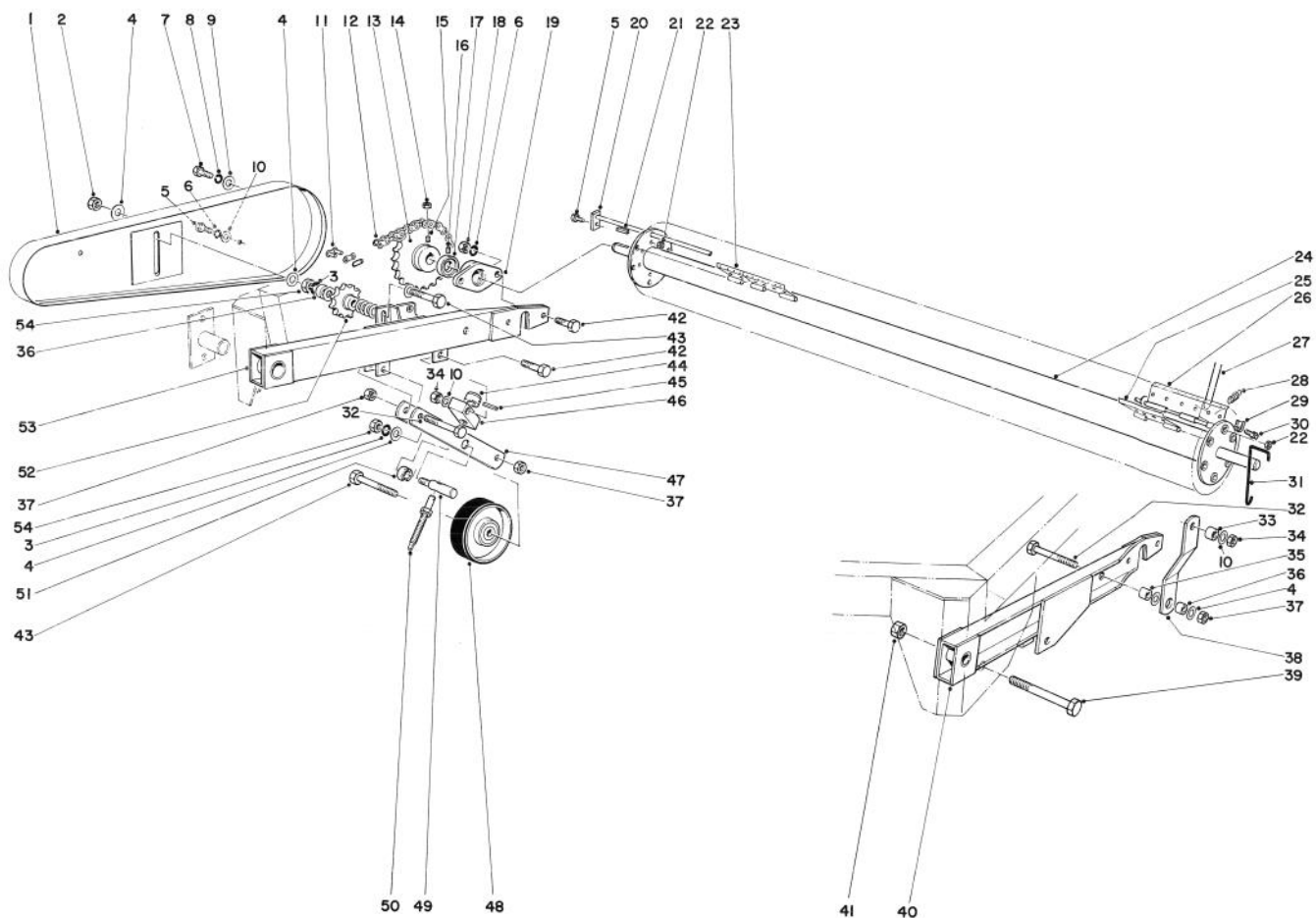
Ref. No.	Part No.	Description	No. Used
21	3256-28	Flat Washer	2
22	3272-22	Cotter Pin	2
23	3247-6	Set Screw	2
24	13-4880	Sprocket	1
25	13-0480	Spring	1
26	13-3990	Trip Handle	1
27	3272-10	Cotter Pin	1
28	13-5500	Lifting Bell Crank L.H.	1
29	13-0050	Spring	2
30	13-5530	Spring Adjusting Rod	2
31	13-4490	Sheave Guard	1
32	3253-4	Lockwasher	2
33	322-7	Capscrew	2
34	13-0160	Driveside Spindle	1
35	251-244	Bearing (Incl. Ref. No's. 6 & 7)	2
36	13-4340	Sprocket	1
37	13-3710	Special Washer	1
38	3253-3	Lockwasher	1
39	321-4	Capscrew	1



GAUGE WHEEL AND TRAILING ARM (Models 07073 & 07174)

Ref. No.	Part No.	Description	No. Used
1	13-5620	Chain Guard	1
2	3296-45	Nut	1
3	3253-7	Lockwasher	3
4	3256-26	Flat Washer	14
5	323-4	Capscrew	7
6	3253-21	Lockwasher	5
7	321-4	Capscrew	1
8	3253-3	Lockwasher	1
9	13-3710	Special Washer	1
10	3256-24	Flat Washer	5
11	2710-11	Connecting Link	1
12	13-4070	Chain	1
13	13-4890	Sprocket	1
14	3218-3	Jam Nut	2
15	3247-6	Set Screw	2
16	3246-2	Set Screw	2
17	251-234	Locking Collar	2
18	3217-7	Nut	4
19	251-244	Bearing (Incl. Ref. No's. 16 & 17)	2
20	13-4960	Finger Plate Shaft	6
21	13-2840	Square Key	1
22	32152-2	Lock Nut	12

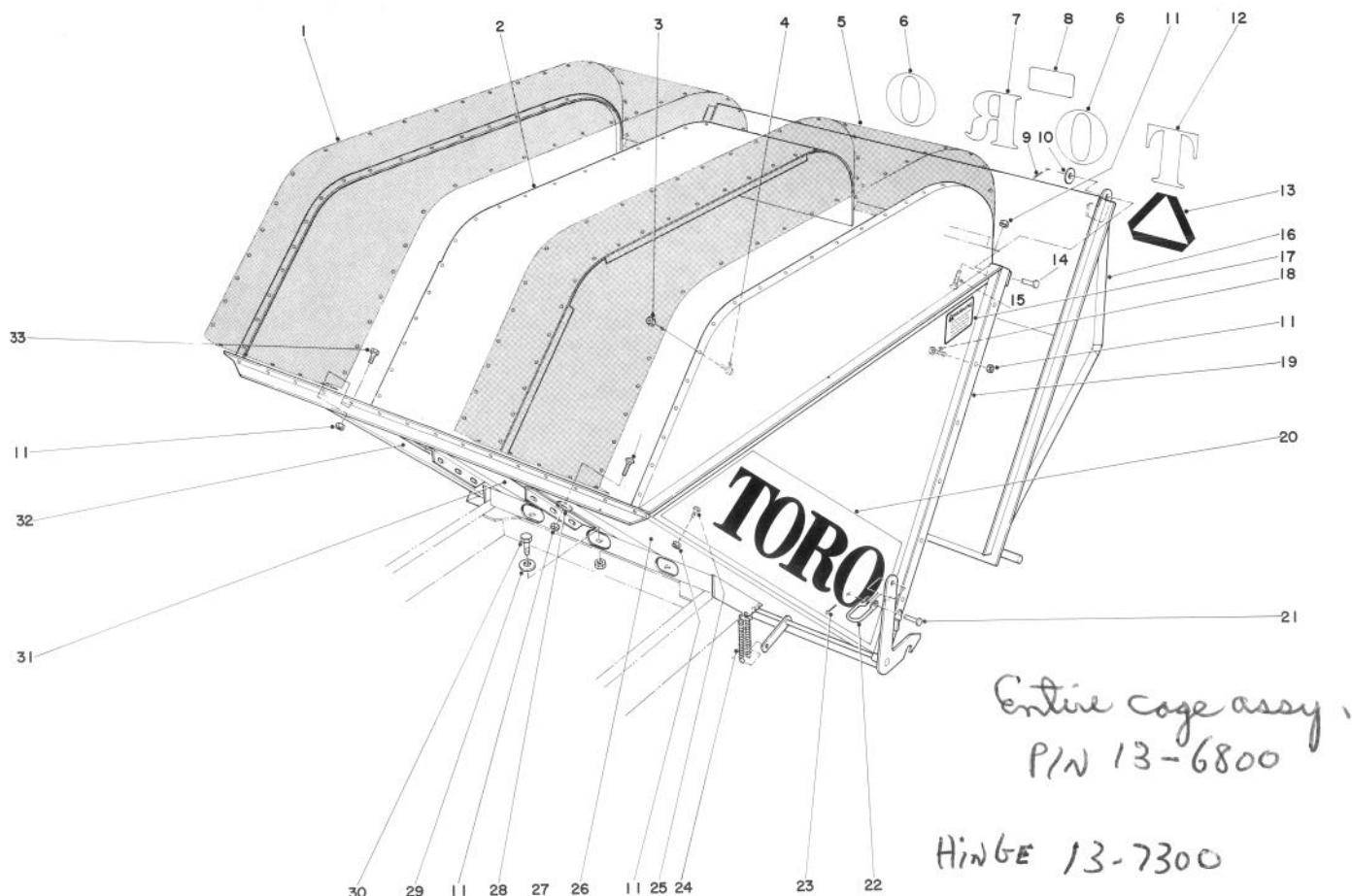
Ref. No.	Part No.	Description	No. Used
23	13-4930	Finger Plate	3
24	13-5250	Reel Rake	1
25	13-2450	Finger Plate	60
26	13-4940	Finger Plate	3
27	13-2470	Nylon Finger	276
28	13-3090	Spring	66
29	13-2480	Finger Clamp	276
30	32140-94	Capscrew	276
31	13-5700	Transport Hooks	2
32	325-11	Capscrew	4
33	13-0560	Spacer	2
34	32153-2	Nut	4
35	13-0360	Spacer	2
36	13-3070	Spacer	3
37	32153-5	Nut	6
38	13-5540	Lift Link	2
39	328-10	Bolt	1
40	13-5230	Trailing Arm L.H.	1
41	32153-6	Nut	1
42	323-9	Capscrew	6
43	325-14	Capscrew	3
44	13-0320	Lock Collar	2
45	32121-45	Roll Pin	2



GAUGE WHEEL AND TRAILING ARM (Models 07073 & 07174)(Continued)

Ref. No.	Part No.	Description	No. Used
46	13-0330	Pivot Block	2
47	13-5550	Gauge Wheel Arm	2
48	13-2870	Guage Wheel	2
49	13-5570	Pivot Stud	2

Ref. No.	Part No.	Description	No. Used
50	13-5590	Adjustment Rod	2
51	13-5670	Locking Spacer	2
52	13-3020	Sprocket	1
53	13-5320	Trailing Arm R.H.	1
54	3217-9	Nut	3

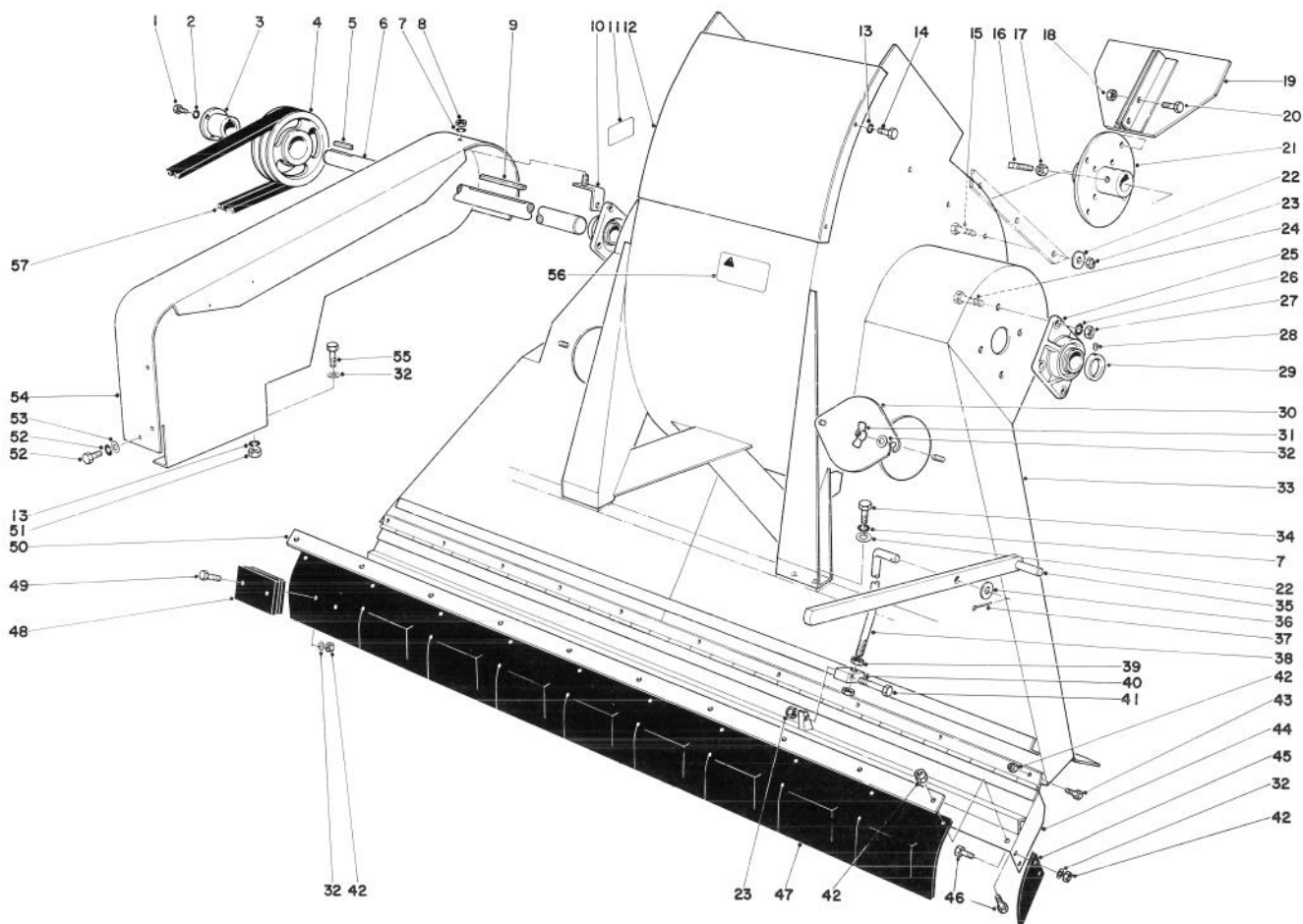


CAGE AND REAR TAILGATE (Models 07073 & 07174)

Ref. No.	Part No.	Description	No. Used
1	13-7380	Top Screen R.H.	1
2	13-7140	Top Panel	1
3	32153-1	Lock Nut	100
4	3251-1	Rd. Hd. Machine Screw	100
5	13-7390	Top Screen L.H.	1
6	13-6850	Decal "O"	2
7	13-6860	Decal "R"	1
8	13-6760	Caution Decal	1
9	3272-12	Cotter Pin	3
10	3256-27	Flat Washer	4
11	32153-4	Locknut	84
12	13-6840	Decal "T"	1
13	13-2930	Decal, Slow Moving Vehicle	1
14	283-39	Clevis Pin	3
15	3258-37	Rd. Hd. Machine Screw	10
16	13-7180	Gate	1
17	13-7430	Warning Decal	1

Ref. No.	Part No.	Description	No. Used
18	3229-8	Carriage Bolt	42
19	13-7400	Bracket Hinge	3
20	13-6870	Decal L.H.	1
*	13-6880	Decal R.H.	1
21	283-10	Clevis Pin	1
22	5-2942	Long Shackle	1
23	3272-10	Cotter Pin	1
24	12-8810	Spring	2
25	32122-20	Machine Screw	36
26	13-7360	Bottom Panel L.H.	1
27	3296-23	Locknut	3
28	13-3710	Flat Washer	2
29	3256-26	Flat Washer	3
30	325-6	Capscrew	3
31	13-7370	Bottom Panel (Middle)	1
32	13-7350	Bottom Panel (R.H.)	1
33	3229-1	Carriage Bolt	15

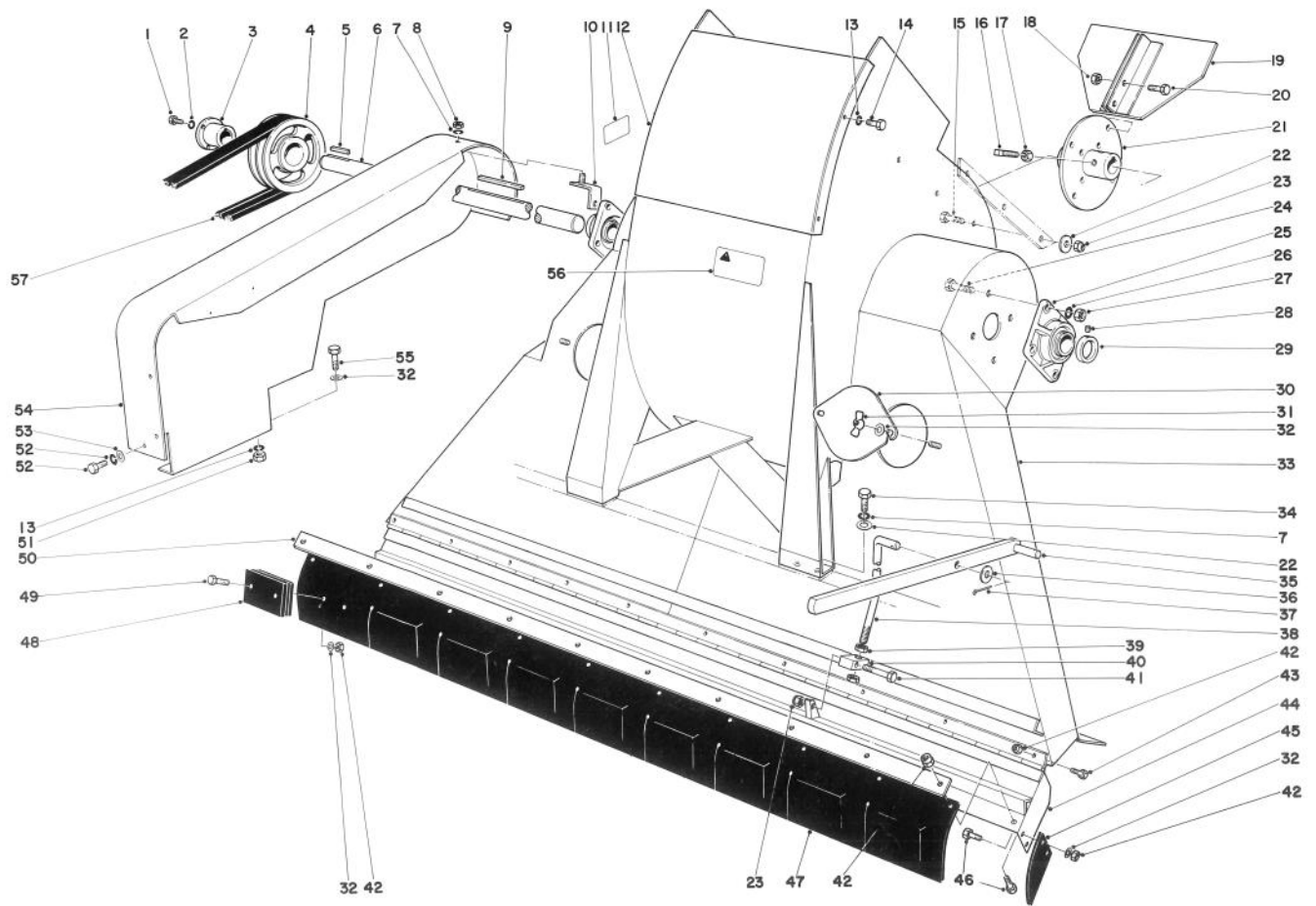
*Not Illustrated



BLOWER AND THROAT ASSEMBLY (Model 07073)

Ref. No.	Part No.	Description	No. Used
1	322-10	Capscrew	3
2	3253-4	Lockwasher	4
3	13-2970	Bushing	1
4	13-2800	Pulley	1
5	13-2240	Square Key	1
6	13-3790	Fan Shaft	1
7	3253-21	Lockwasher	9
8	3217-7	Nut	1
9	13-2810	Square Key	1
10	13-3350	Shield Support	1
11	13-6470	Decal	1
12	13-3850	Blower Access Plate	1
13	3253-3	Lockwasher	6
14	321-2	Capscrew	4
15	323-7	Capscrew	6
16	3244-14	Set Screw, Sq. Hd.	4
17	3218-5	Jam Nut	4
18	3296-23	Locknut	8
19	13-1280	Fan Blade	4
20	325-7	Capscrew	8
21	13-1310	Fan Hub	1
22	3256-24	Flat Washer	14
23	3296-39	Locknut	7

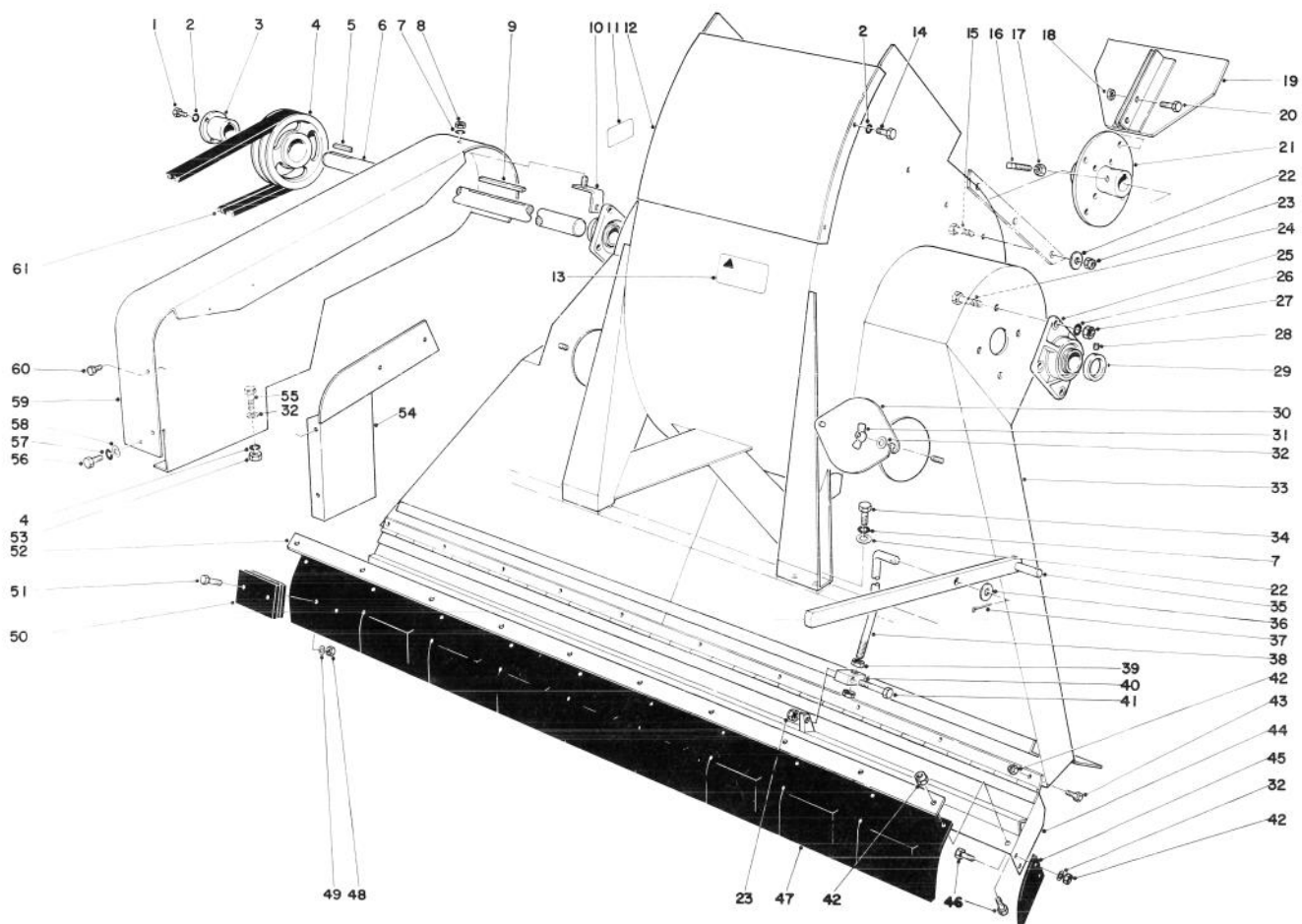
Ref. No.	Part No.	Description	No. Used
24	325-6	Capscrew	8
25	251-243	Bearing and Collar	2
26	3253-7	Lockwasher	8
27	3217-9	Nut	8
28	3247-2	Set Screw	2
29	251-233	Locking Collar	2
30	13-1420	Inspection Cover	2
31	32103-12	Wing Nut	4
32	3256-22	Flat Washer	28
33	13-6280	Blower	1
34	323-6	Capscrew	8
35	13-6390	Flap Handle	1
36	3256-27	Flat Washer	1
37	3272-12	Cotter Pin	1
38	13-6360	Lift Rod	1
39	3218-6	Jam Nut	2
40	13-0330	Pivot Block	1
41	323-8	Capscrew	1
42	3296-42	Lock Nut	42
43	321-3	Capscrew	10
44	13-4760	Lower Flap	1
45	13-3130	End Flap	2
46	321-5	Capscrew	14



BLOWER AND THROAT ASSEMBLY (Model 07073) (Continued)

Ref. No.	Part No.	Description	No. Used
47	13-4700	Flap (Incl. Ref. 32, 42, 48 & 49)	1
48	13-4560	Flap Weight	18
49	321-8	Capscrew	18
50	13-1390	Flap Retainer	1
51	3217-5	Nut	2
52	322-1	Capscrew	1

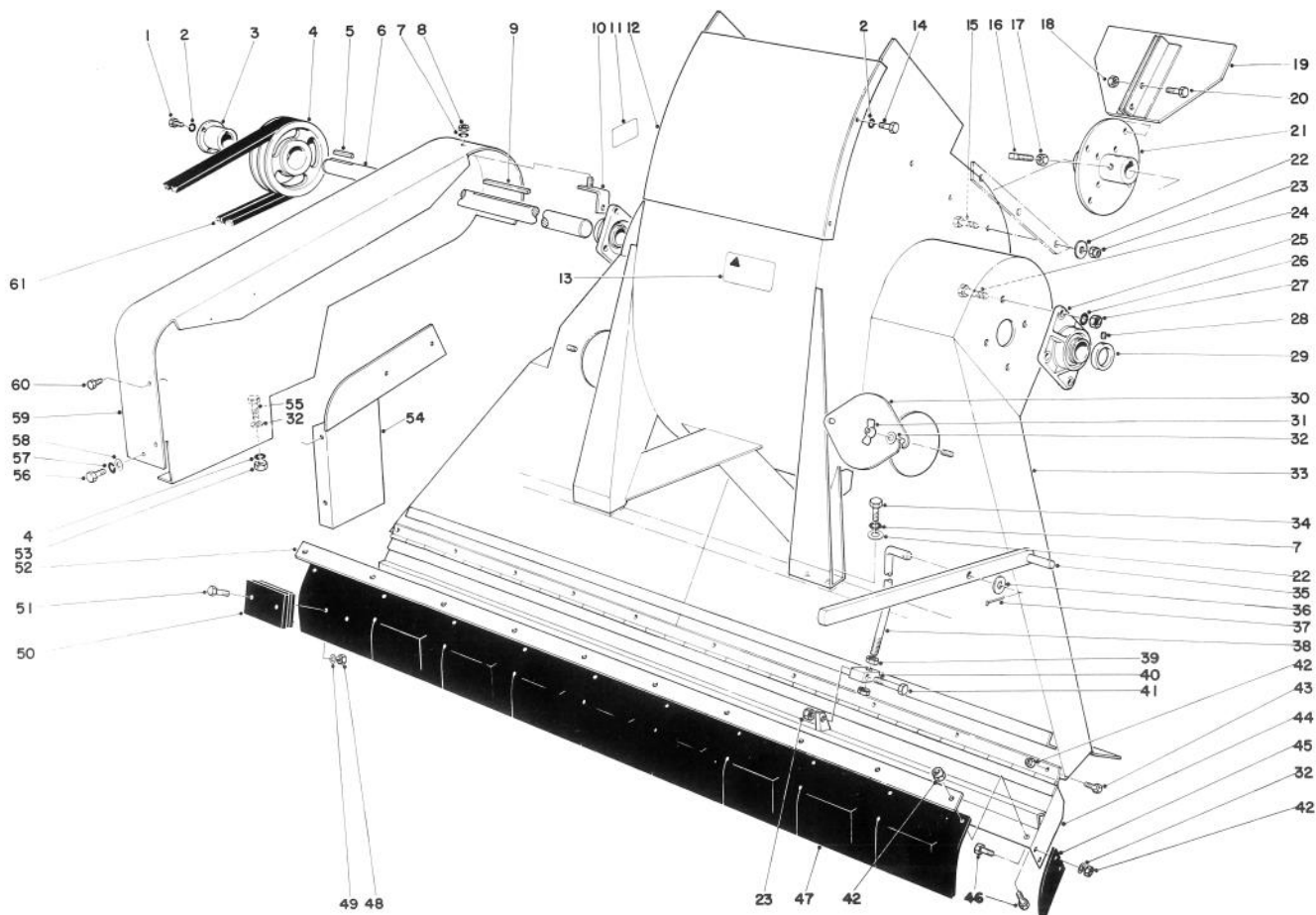
Ref. No.	Part No.	Description	No. Used
53	3256-23	Flat Washer	1
54	13-4800	Belt Guard	1
55	321-4	Capscrew	2
56	13-6410	Decal	1
57	13-2640	Belt	1
BALANCED FAN ASSY. 13-3420			



BLOWER AND THROAT ASSEMBLY (Model 07174)

Ref. No.	Part No.	Description	No. Used
1	321-8	Capscrew	3
2	3253-3	Lockwasher	9
3	13-6070	Bushing	1
4	13-6030	Pulley	1
5	13-2240	Square Key	1
6	13-3790	Fan Shaft	1
7	3253-21	Lockwasher	9
8	3217-7	Nut	1
9	13-2810	Square Key	1
10	13-3350	Mounting Bracket	1
11	13-6470	Decal	1
12	13-3850	Blower Access Plate	1
13	13-6410	Decal	1
14	321-2	Capscrew	4
15	323-7	Capscrew	6
16	3244-14	Square Hd. Set Screw	4
17	3218-5	Nut	4
18	3296-23	Locknut	8
19	13-1280	Fan Blade	4
20	325-7	Capscrew	8
21	13-1310	Fan Hub	1
22	3256-24	Flat Washer	14
23	3296-39	Locknut	7

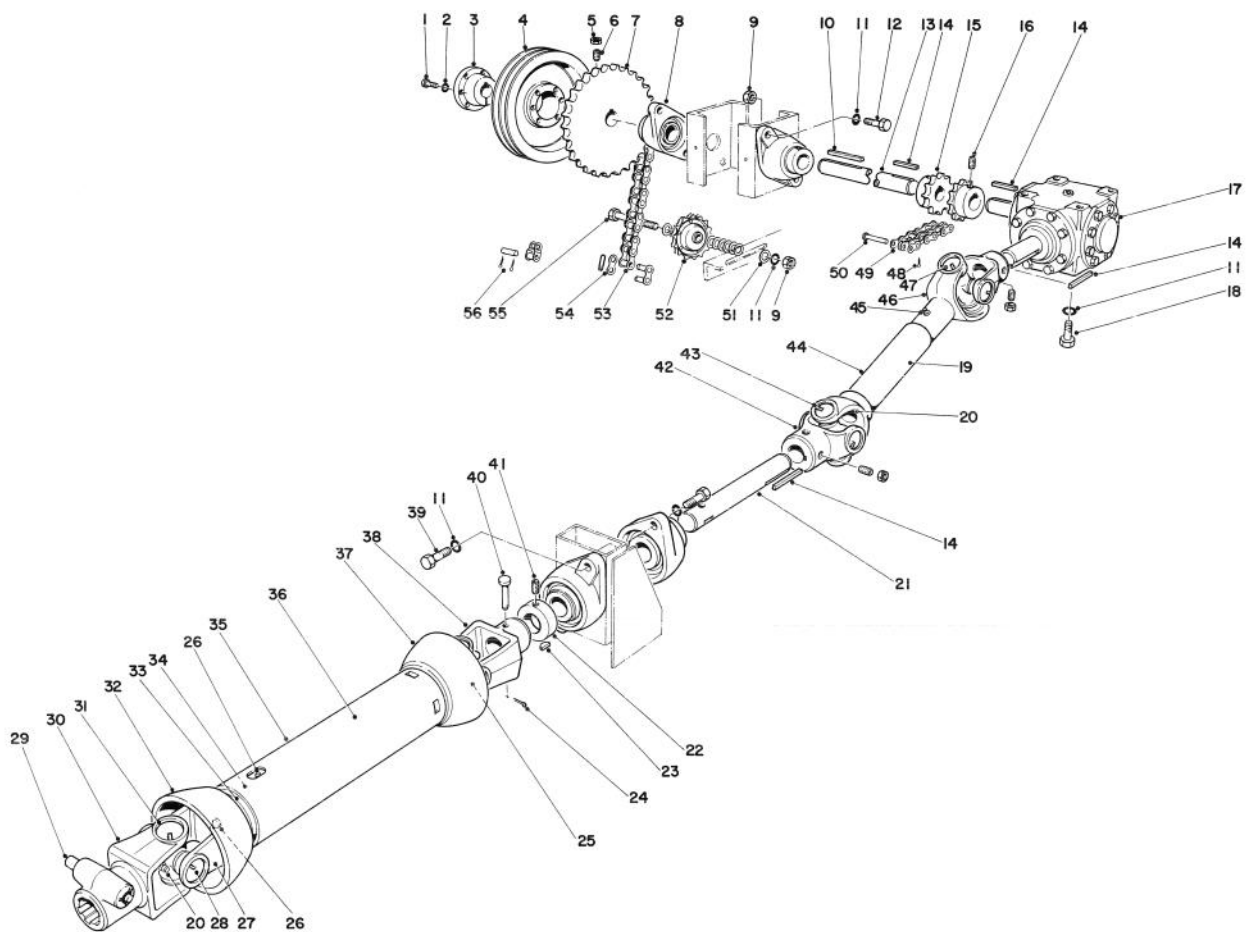
Ref. No.	Part No.	Description	No. Used
24	325-6	Capscrew	8
25	251-243	Bearing (Incl. Ref. 28 & 29)	2
26	3253-7	Lockwasher	8
27	3217-9	Nut	8
28	3247-2	Set Screw	2
29	251-233	Locking Collar	2
30	13-1420	Inspection Cover	2
31	32103-12	Wing Nut	4
32	3256-22	Flat Washer	10
33	13-6280	Blower and Throat	1
34	323-6	Capscrew	8
35	13-6390	Flap Handle	1
36	3256-27	Flat Washer	1
37	3272-12	Cotter Pin	1
38	13-6360	Lift Rod	1
39	3218-6	Jam Nut	2
40	13-0330	Pivot Block	1
41	323-8	Capscrew	1
42	3296-42	Lock Nut	24
43	321-3	Capscrew	10
44	13-4760	Lower Flap	1
45	13-3130	End Flap	2
46	321-5	Capscrew	14



BLOWER AND THROAT ASSEMBLY (Model 07174) (Continued)

Ref. No.	Part No.	Description	No. Used
47	13-4700	Rubber Flap	1
48	3217-26	Nut	18
49	3256-14	Flat Washer	18
50	13-4560	Flap Weight	18
51	3290-107	Capscrew	18
52	13-1390	Flap Retainer	1
53	3217-5	Capscrew	2
54	13-6090	Side Guard Cover	1

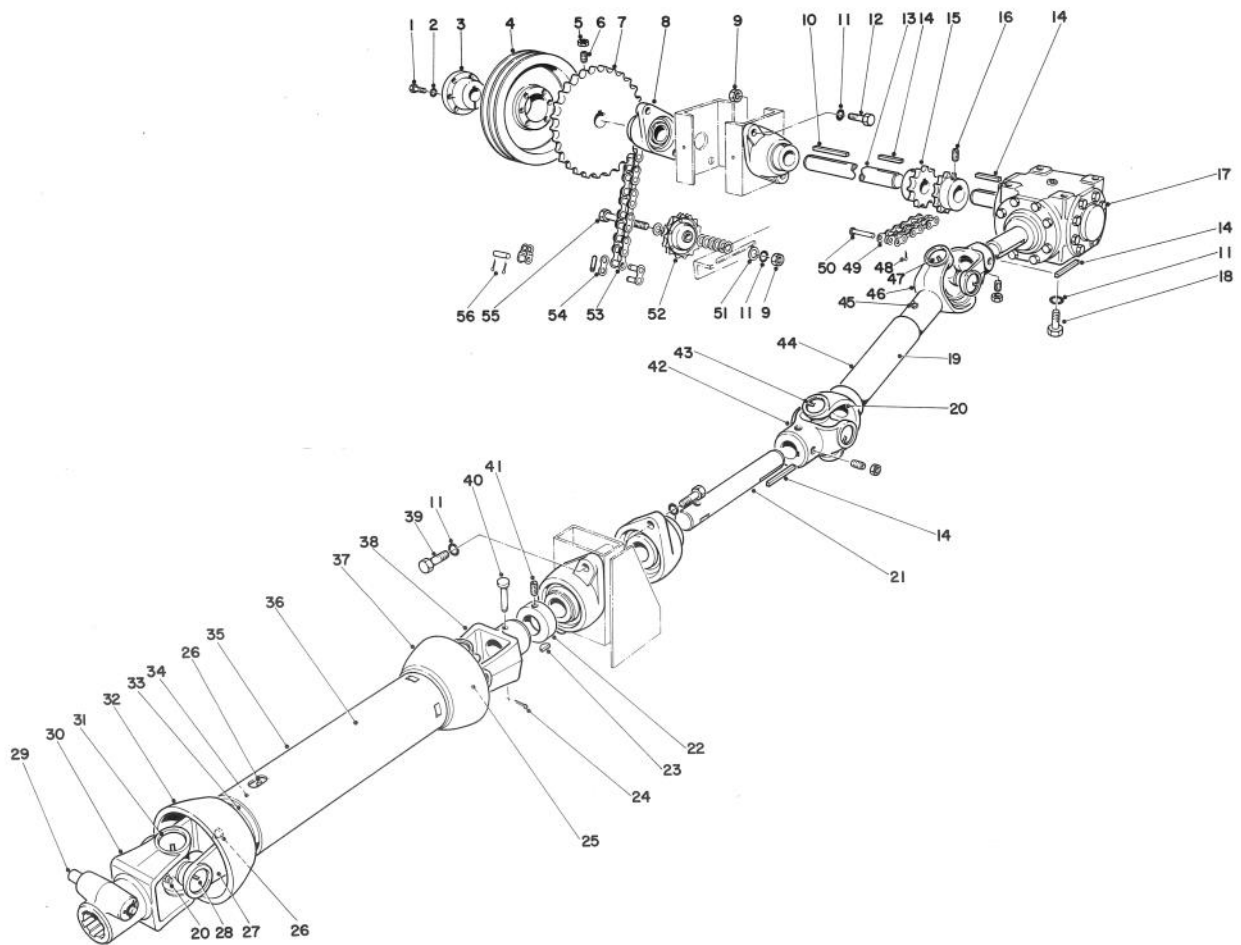
Ref. No.	Part No.	Description	No. Used
55	321-4	Capscrew	2
56	322-1	Capscrew	1
57	3253-4	Lockwasher	1
58	3256-23	Flat Washer	1
59	13-4800	Belt Guard	1
60	32104-109	Screw	4
61	13-2640	Belt	1



DRIVE MECHANISM (Model 07174)

Ref. No.	Part No.	Description	No. Used
1	322-10	Capscrew	3
2	3253-4	Lockwasher	3
3	13-6050	Bushing	1
4	13-6020	Sheave	1
5	3218-3	Jam Nut	6
6	3247-6	Set Screw	6
7	13-6110	Sprocket	1
8	251-245	Bearing	4
9	3217-9	Nut	5
10	13-3720	Square Key	1
11	3253-7	Lockwasher	13
12	325-6	Capscrew	4
13	13-5910	Side Drive Shaft	1
14	5-0738	Square Key	4
15	13-6690	Coupling Half	2
16	3247-3	Set Screw	4
17	13-5990	Gear Box Complete	1
18	325-4	Capscrew	4
19	13-6010	Yoke Assembly (Incl. Ref. Nos. 20 & 42-47)	1
20	2115-80	Grease Fitting	4
21	13-5900	Front Drive Shaft	1
22	251-246	Eccentric Locking Collar	4

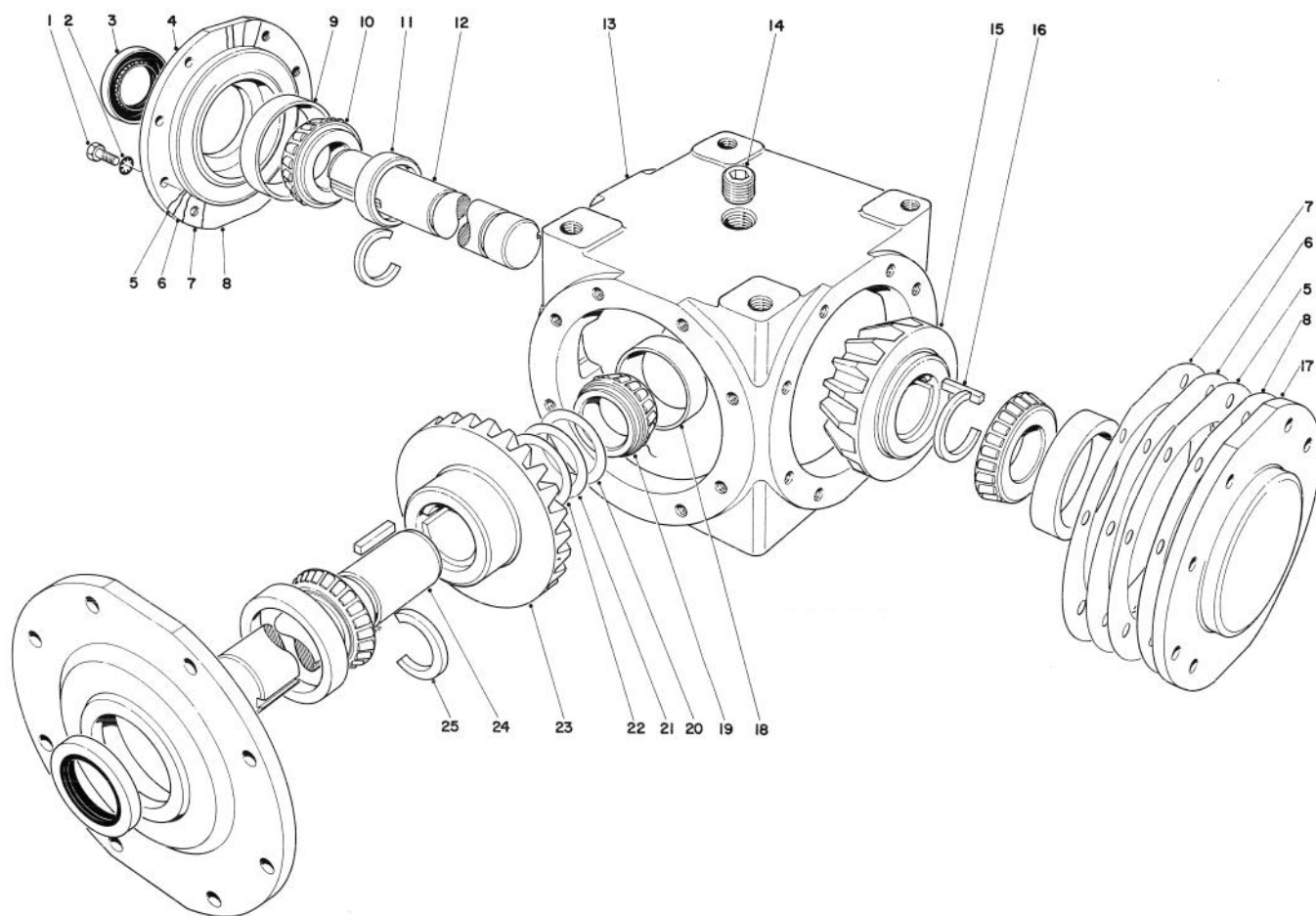
Ref. No.	Part No.	Description	No. Used
23	3257-8	Key	1
24	3272-10	Cotter Pin	1
25	2115-84	Yoke Sub Assembly	1
26	2115-85	Grease Fitting	2
27	2115-87	Yoke and Shaft	1
28	2115-79	Lock Ring	8
29	2115-77	Quick Detach Pin	1
30	2115-89	Yoke	1
31	2115-88	Center Parts Kit	2
32	2115-92	Shield	1
33	2115-93	Shield	1
34	2115-86	Support Bearing	1
35	2115-91	Shield	1
36	13-6040	Universal Coupler (Incl. Ref. Nos. 20 & 25-38)	1
37	2115-90	Shield	1
38	2115-94	Yoke	1
39	325-5	Capscrew	4
40	283-33	Pin	1
41	3247-2	Set Screw	8
42	2115-81	Yoke	2
43	2115-76	Center Parts Kit	2
44	2115-83	Yoke and Shaft	1



DRIVE MECHANISM (Model 07174) (Continued)

Ref. No.	Part No.	Description	No. Used
45	302-2	Grease Fitting	1
46	2115-82	Yoke and Shaft	1
47	2115-78	Lock Ring	8
48	3272-1	Cotter Pin	1
49	13-6680	Chain	1
50	13-6670	Connector Pin	1

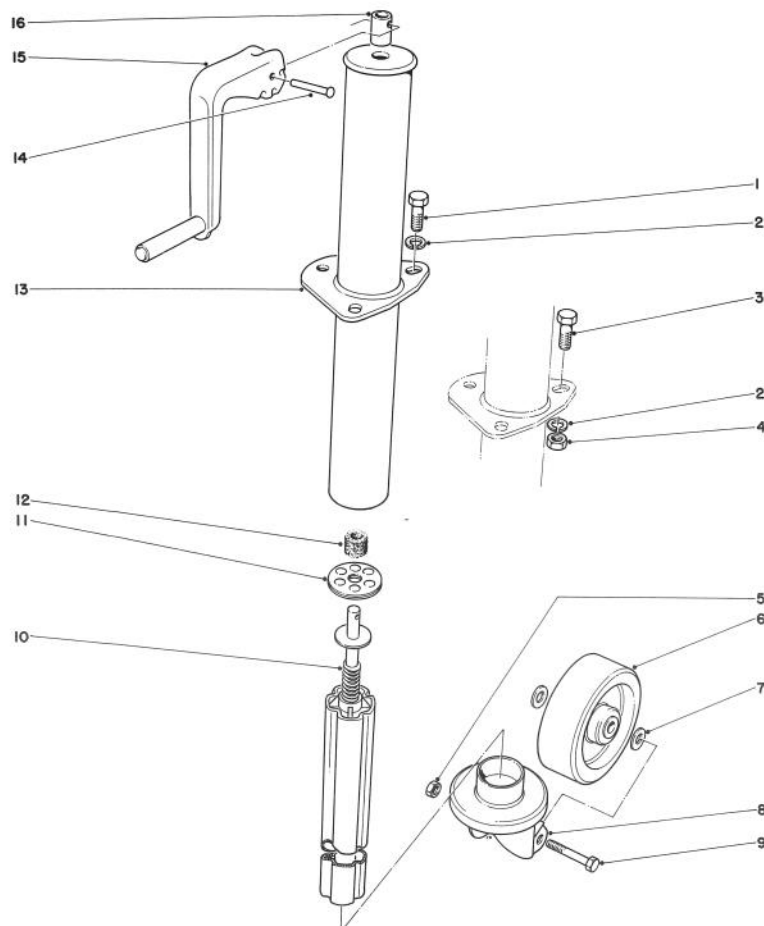
Ref. No.	Part No.	Description	No. Used
51	3256-26	Flat Washer	8
52	13-4570	Idler Sprocket	1
53	13-4590	Chain	1
54	2710-30	Connecting Link	1
55	325-11	Capscrew	1
56	2710-29	Offset Link	1



GEAR BOX ASSEMBLY (Model 07174)

Ref. No.	Part No.	Description	No. Used
1	322-5	Capscrew	24
2	3254-10	Lockwasher	24
3	13-6520	Seal	2
4	13-6500	Cap	2
5	13-6490	Gasket .002 Thk.	AR
6	13-6610	Gasket .003 Thk.	AR
7	13-6600	Gasket .005 Thk.	AR
8	13-6590	Gasket .015 Thk.	AR
9	254-20	Bearing Cup	3
10	254-97	Bearing Cone	3
11	13-6620	Thrust Collar	1
12	13-6510	Shaft	1
13	13-6650	Housing	1

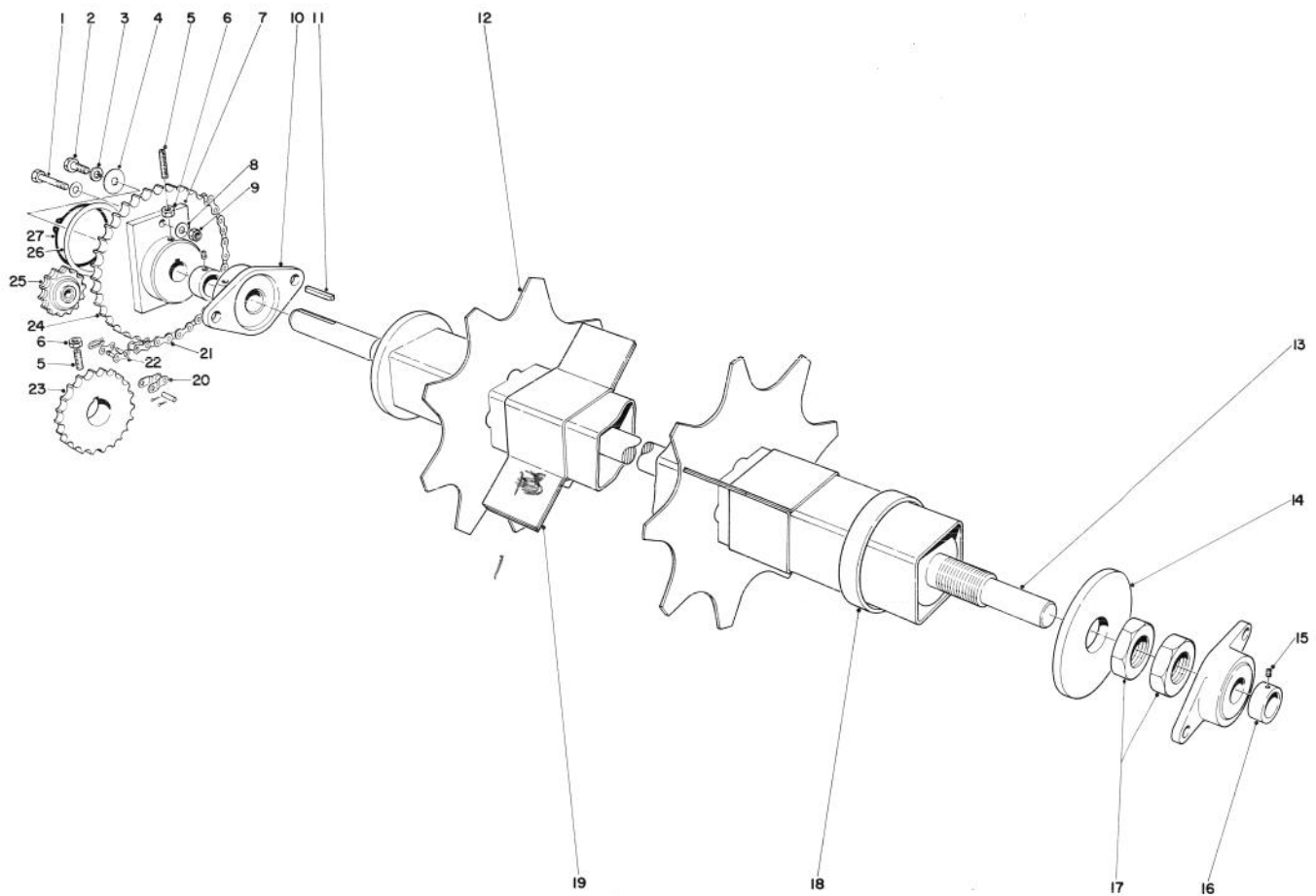
Ref. No.	Part No.	Description	No. Used
14	285-12	Pipe Plug	2
15	13-6660	Gear 17 Tooth	1
16	13-6570	Tapered Key	2
17	13-6580	Cap	1
18	254-61	Bearing Cup	1
19	254-62	Bearing Cone	1
20	13-6540	Shim .010 Thk.	AR
21	13-6630	Shim .005 Thk.	AR
22	13-6550	Shim .002 Thk.	AR
23	13-6530	Gear 23 Tooth	1
24	13-6560	Shaft	1
25	13-6640	Retaining Ring	3



JACK ASSEMBLY (Models 07073 & 07174)

Ref. No.	Part No.	Description	No. Used
1	323-4	Capscrew (Model 07071 only)	3
2	3253-21	Lockwasher	6
3	323-5	Capscrew (Model 07172 only)	3
4	3217-7	Nut (Model 07172 only)	3
5	3296-23	Nut	1
6	13-6460	Wheel	1
7	3256-26	Flat Washer	2
8	13-6450	Caster Wheel Bracket	1
9	325-13	Capscrew	1

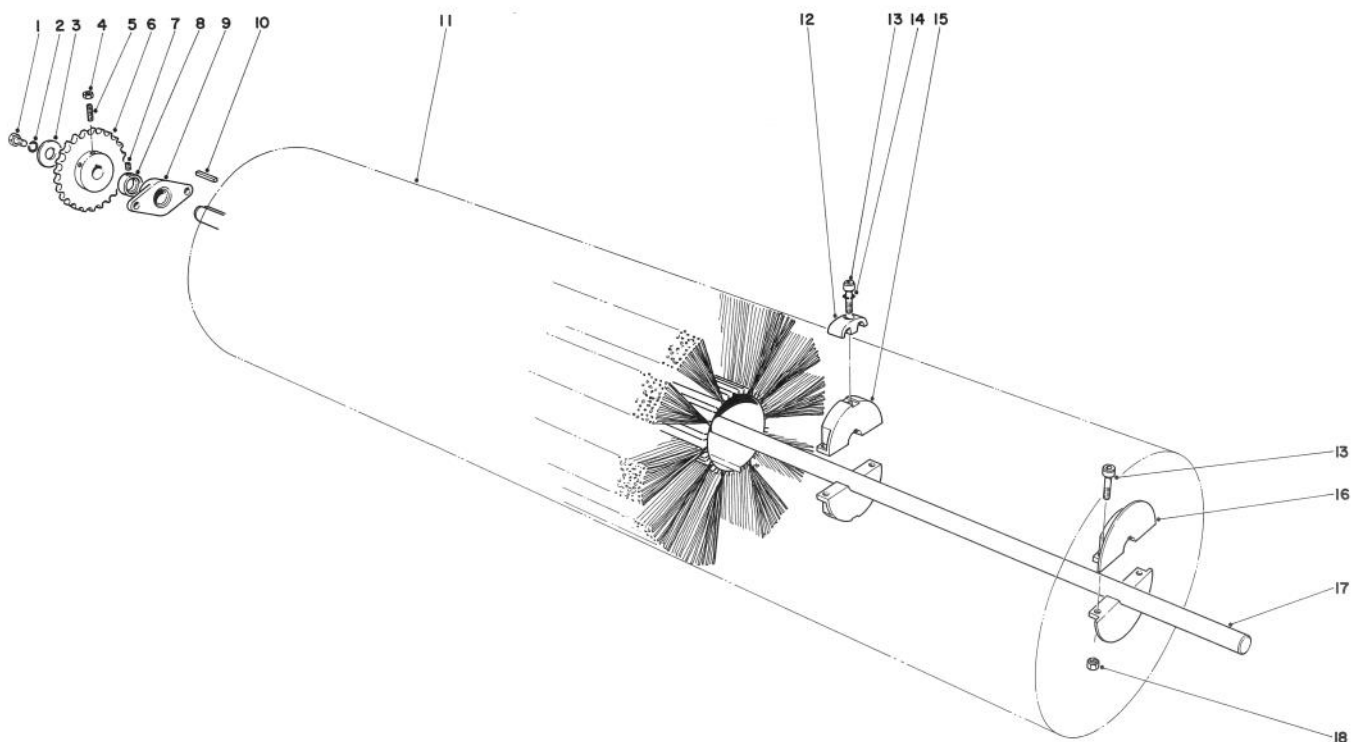
Ref. No.	Part No.	Description	No. Used
10	13-6750	Ram	1
11	13-3510	Thrust Bearing	1
12	13-3610	Felt Sleeve	1
13	13-5680	Jack Assembly (Incl. Ref. Nos. 10-16)	1
14	13-6730	Rivet	1
15	13-6740	Handle	1
16	13-3490	Sleeve	1



66" THATCHING ATTACHMENT (Model 07178)

Ref. No.	Part No.	Description	No. Used
1	321-10	Capscrew	1
2	321-4	Capscrew	1
3	3253-3	Lockwasher	1
4	13-3710	Flat Washer	1
5	3247-8	Set Screw	4
6	3218-3	Jam Nut	4
7	13-7700	Hub-Torque Limiting	1
8	13-3710	Flat Washer	2
9	3296-8	Locknut	1
10	251-244	Bearing	2
11	13-2840	Square Key	1
12	13-7540	Blade — 9 Tooth	16
13	13-7560	Shaft	1
14	13-7520	End Plate	1

Ref. No.	Part No.	Description	No. Used
15	3246-2	Set Screw	2
16	251-234	Locking Collar	2
17	3218-17	Jam Nut	2
18	13-7530	End Spacer	1
19	13-7550	Spacer	15
20	2710-29	Offset Link	1
21	13-4580	Chain	1
22	2710-30	Connecting Link	1
23	13-7440	Drive Sprocket (18 Tooth)	1
24	13-7740	Sprocket (36 Tooth)	1
25	13-4570	Idler Sprocket	1
26	13-7640	Washer	1
27	32151-16	Retaining Ring	1



66" STREET BROOM ATTACHMENT (Model 07076)

Ref. No.	Part No.	Description	No. Used
1	321-4	Capscrew	1
2	3253-3	Lockwasher	1
3	13-3710	Washer	1
4	3218-3	Jam Nut	2
5	3247-6	Set Screw	2
6	13-4890	Sprocket	1
7	3246-2	Set Screw	2
8	251-234	Locking Collar	2
9	251-244	Bearing (Incl. Ref. No's. 7 & 8)	2
10	13-2840	Square Key	1

Ref. No.	Part No.	Description	No. Used
11	13-3210	Brush Half	2
12	13-3180	Brush Clamp	6
13	3274-1	Hex Head Socket Capscrew	12
14	13-3360	Special Lockwasher	6
15	13-3190	Center Support (Incl. Ref. No's. 12, 13, 14 & 18)	1
16	13-3200	End Support (Incl. Ref. No's. 12, 13, 14 & 18)	2
17	13-4990	Brush Shaft	1
18	3217-7	Nut	6

PRODUCT CHANGES

In an effort to make improvements available to TORO owners as quickly as possible, minor changes are incorporated into Toro's products from time to time that do not become immediately shown in the Parts Catalog. If such a change apparently has been made in your unit, which is not reflected in your manual, see your TORO distributor or his Authorized TORO Service Dealer for information and part numbers.

IMPORTANT ORDERING INSTRUCTIONS

Repair parts are available from your Authorized TORO Service Dealer. To insure getting correct parts without delay, furnish the following information:

1. Serial number of your unit as shown on the name plate.
2. Part number, description, and quantity of each part required.
3. State whether parts should be shipped by mail or express. All repair parts are shipped F.O.B. Factory.
4. Name and address where parts are to be shipped.
5. Do not order by reference number; use part number only.

THE TORO PROMISE

It is Toro's policy to design and produce TORO products to provide our customers with a high level of performance and durability in normal operation. Our products, however, are produced in high volume, and it is inevitable that occasionally a unit will reach a customer with a defect in materials or workmanship which causes that unit to fall below the normal high

level of TORO performance. Invariably, such a defect will be noticed in a residential product within one year, and in an institutional product within ninety days after purchase. Recognizing this possibility, Toro has established a simple guarantee policy and procedure that is intended to assure customer satisfaction. This guarantee statement is as follows:

The Toro Promise

The Toro Company promises to repair any TORO product for the original purchaser if defective in materials or workmanship. The following time periods from the date of purchase apply:

Residential products	1 year
Residential products used commercially	45 days
Institutional products	90 days

The costs of parts and labor are included, but the customer pays the transportation costs. Just return any residential product to an Authorized TORO Service Dealer, or any institutional product to a TORO distributor.

Should you feel that a product is defective, and wish to rely on The Toro Promise, the following procedure is recommended:

1. Contact any TORO dealer or distributor, but preferably the dealer or distributor from whom you purchased the product.
2. He will instruct you to either return the product to him, or tell you the name and address of your nearest Authorized TORO Service Dealer if the product is to be returned to such dealer.
3. Take the product and your original sales slip, or other evidence of purchase date, to the servicing dealer.
4. The servicing dealer will inspect the unit, advise you whether the product is defective and, if so, make all repairs necessary to correct the defect without extra charge to you.

If for any reason you are dissatisfied with the dealer's analysis of the defect or the service he performs, we urge you to contact us. Write:

TORO "Customer Care" Department
8111 Lyndale Avenue South
Bloomington, Minnesota 55420