

LAWN-BOY®

Gold Pro Series® Walk Power Lawn Mower Model No. 10552—210000001 and Up

Parts Catalog

Ordering Replacement Parts

To order replacement parts, please supply: the part number, the quantity, and the description of each part desired.

Understanding Reference Numbers

Each identified part in an illustration has a reference number. The reference number for a part also appears in the parts list, along with other information about the part.

This catalog uses two special reference number formats, one to indicate parts in a service assembly and another to indicate the quantity of a given part in an illustration.

Service Assembly Reference Numbers

Parts in service assemblies have reference numbers in the form **a:b**. The **a** represents the reference number of the entire service assembly and the **b** represents a sequential number unique to each part within the service assembly.

For example, a wheel assembly might be identified by reference number **6**, the tire by **6:1**, the valve by **6:2**, and the wheel by **6:3**. When you order the assembly identified by reference number **6**, you receive all parts identified by reference numbers **6:1**, **6:2**, and **6:3**. However, you may also order any part individually.

Reference numbers of this type appear in illustrations and in part lists.

Reference Numbers Indicating Quantity

In an illustration, if a reference number indicates more than one part, the reference number has the form **nX y**. The **n** represents the quantity of the part, the **X** is the multiplication symbol, and the **y** represents the reference number.

For example, in an illustration, the reference number **2X 37** means that two of the parts identified by reference number **37** are indicated.

Contents

Description	Page	Description	Page
Housing and Wheel Assembly	3	Battery and Switch Assembly	8
Gearcase Assembly No. 104-7676	4	Engine Assembly	9
Engine Installation Assembly	5	Short Block Assembly No. 95-7637	11
Gearcase and Wheel Assembly	6	Carburetor Assembly No. 98-7042	12
Handle Assembly	7		

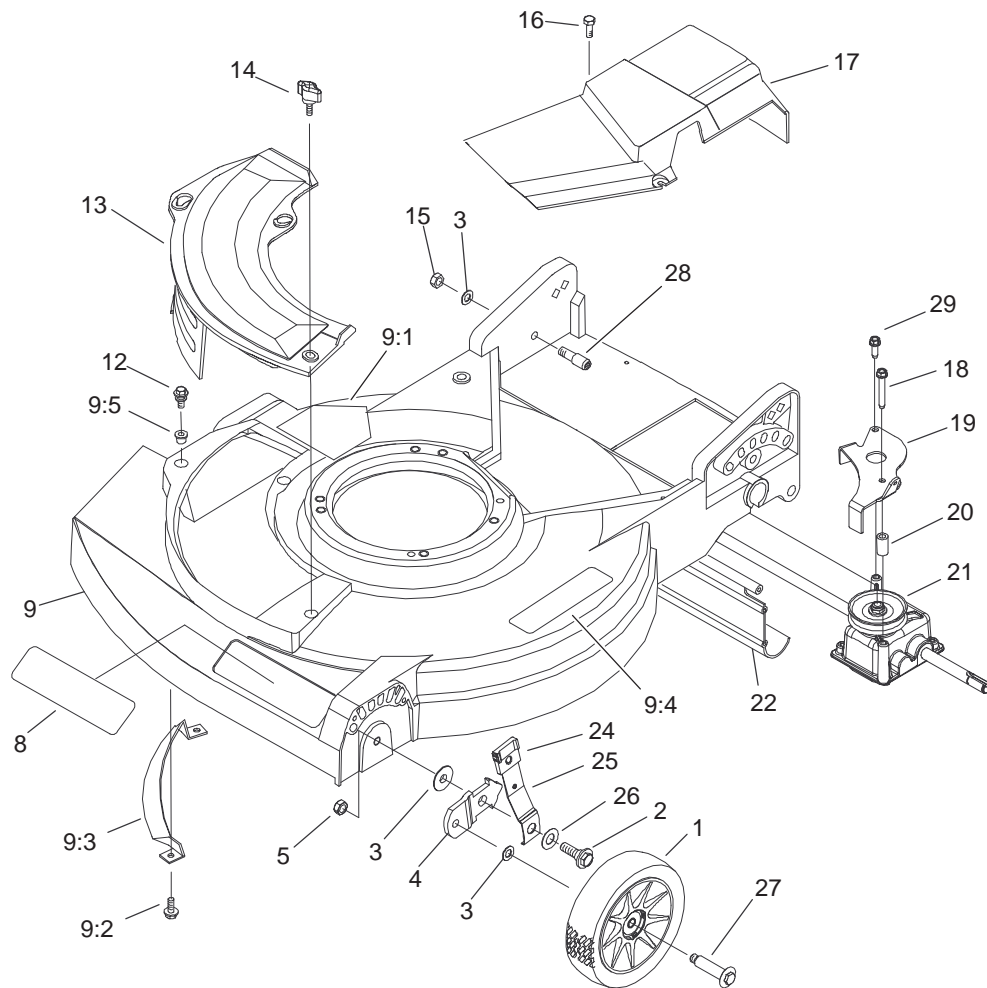
Accessories

Description	Model / Part No.	Description	Model / Part No.
Side Bagging Kit	89817	Leaf Bag with Chute	89811
Rear Bagging Kit	89906	Leaf Shredder Kit	89860
Leaf Bag	89804		

Part Description Abbreviations

Part descriptions in this catalog may include the following abbreviations.

Abbreviation	Meaning	Abbreviation	Meaning
AR	as required	HYD	hydraulic
ASM	assembly	INC	incorporated
CARR	carriage	LH	left hand
DEG	degrees	NI	nylon insert
FH	flat head	PPH	Phillips pan head
GA	gauge	PTH	Phillips truss head
HF	hex flange	PTO	power take off
HH	hex head	RH	right hand
HHF	hex head flange	SFH	slotted fillister head
HLH	hex lag head	SHH	slotted hex head
HJ	hex jam	SQH	square head
HOC	height-of-cut	SHWH	slotted hex washer head
HS	hex socket	SPH	slotted pan head
HSBH	hex socket button head	SRH	slotted round head
HSFH	hex socket flat head	STD	standard
HSH	hex socket head	TAP	self tapping
HWH	hex washer head	TTH	Torx truss head
HWHTF	hex washer head thread forming	WH	wing head

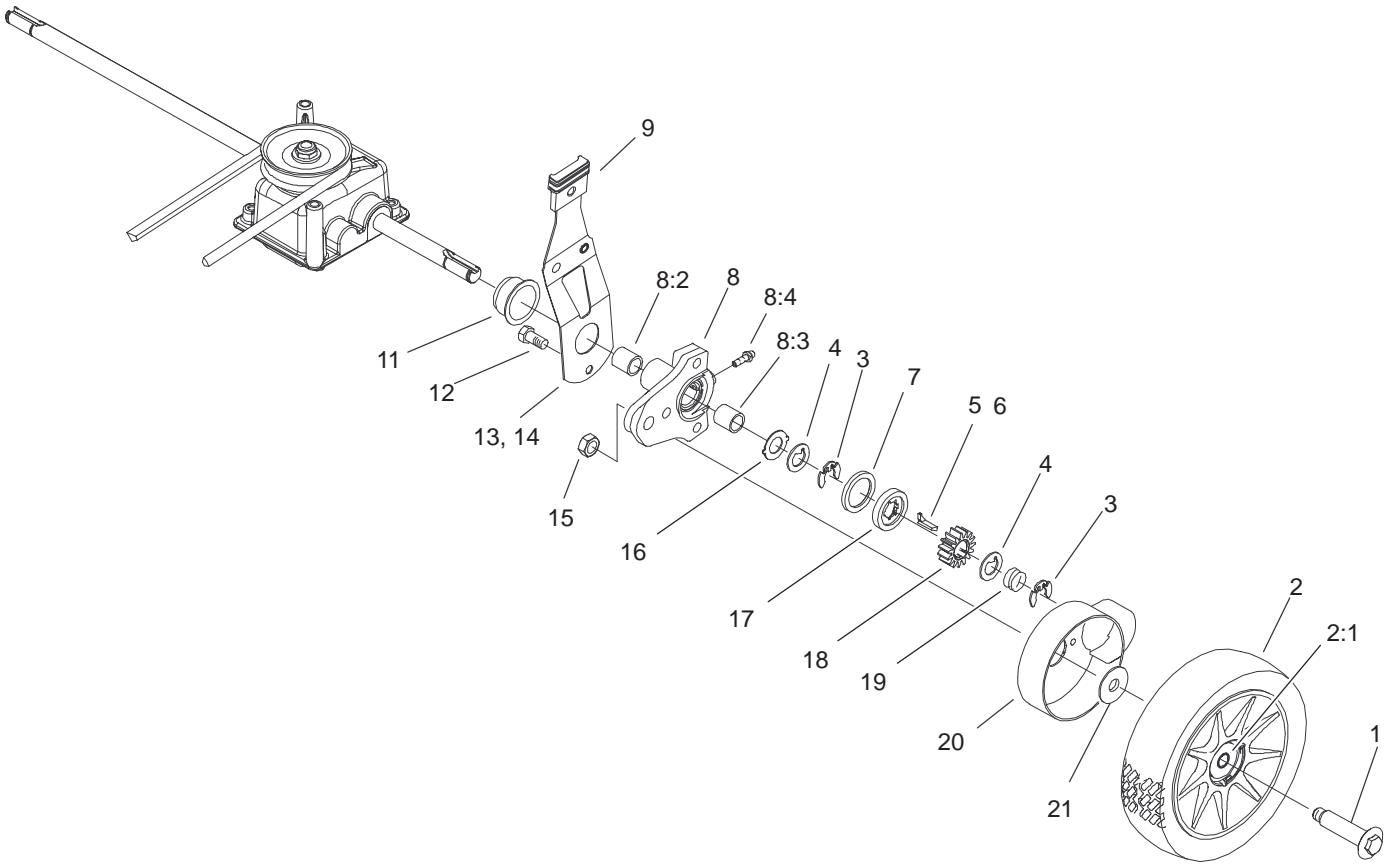


Sheet No.:2

Housing and Wheel Assembly

Ref. No.	Part No.	Qty.	Description	Ref. No.	Part No.	Qty.	Description
1	684776	2	Wheel & Tire ASM	24	92-1008	2	Knob-Lever, Height Adjustment
2	92-4856	2	Bolt-Shoulder	25	92-1006	2	Front Spring Arm ASM
3	40-1940	6	Washer	26	3290-413	2	Washer-Belleville
4	95-7403-03	2	Bracket-Height Adjustment, Wheel	27	92-1099	2	Bolt-Shoulder
5	3296-39	2	Nut-Lock, NI	28	92-9673	2	Screw-Torx
8	104-7956	1	Decal-Deck	29	49-2040	1	Screw-Tapping
9	100-1044	1	Housing	*99	95-7052	1	Plate-Opening, Chute
9:1	43-8480	1	Decal-Danger				
9:2	46-6811	2	Screw-HWH				
9:3	608175	1	Bar-Toe				
9:4	93-7250	1	Decal-Warning				
9:5	94-1610	3	Grommet - Plastic				
12	614677	2	Screw-Sems				
13	92-8630	1	Plate-Mulch				
14	98-8332	1	Knob				
15	603773	2	Nut				
16	12-5450	2	Screw				
17	104-7662	1	Cover-Drive				
18	92-1616	1	Screw-HWHTF				
19	104-7930-03	1	Bracket-Gearbox				
20	614673	1	Bushing-Plate, Actuator				
21	104-7676	1	Gear Case ASM				
22	92-7736	1	Shield - Trailing				

* Not illustrated

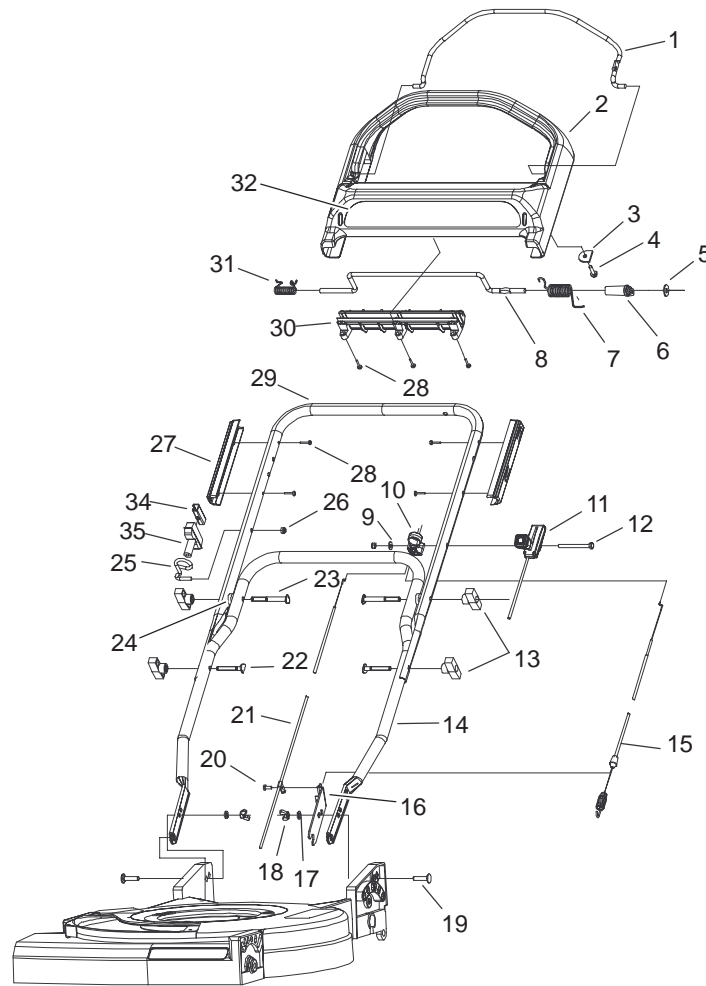


Sheet No.:5

Gearcase and Wheel Assembly

Ref. No.	Part No.	Qty.	Description
1	92-1057	2	Bolt-Shoulder
2	92-1042	2	Wheel & Tire ASM
2:1	27-6250	2	Bushing
3	65-2720	4	Ring-Klip
4	65-4740	4	Washer-Thrust, Keyed
5	66-6050	1	Key-Rocking, LH
6	66-6040	1	Key-Rocking, RH
7	65-4710	2	Ring-Friction
8	92-7746	2	Rear Height Adjustment Arm ASM
8:2	70-9760	1	Bushing
8:3	47-2900	1	Bushing
8:4	302-56	1	Fitting-Zerk
9	92-1008	2	Knob-Lever, Height Adjustment
11	92-6535	2	Ring - Isolator
12	32144-85	2	Screw-HH
13	92-6540	1	LH Rear Spring Arm ASM
14	92-6539	1	RH Rear Spring Arm ASM
15	603773	2	Nut
16	65-4730	2	Washer-Arm, Pivot
17	65-4760	2	Washer-Clutch
18	65-4750	2	Gear-Pinion

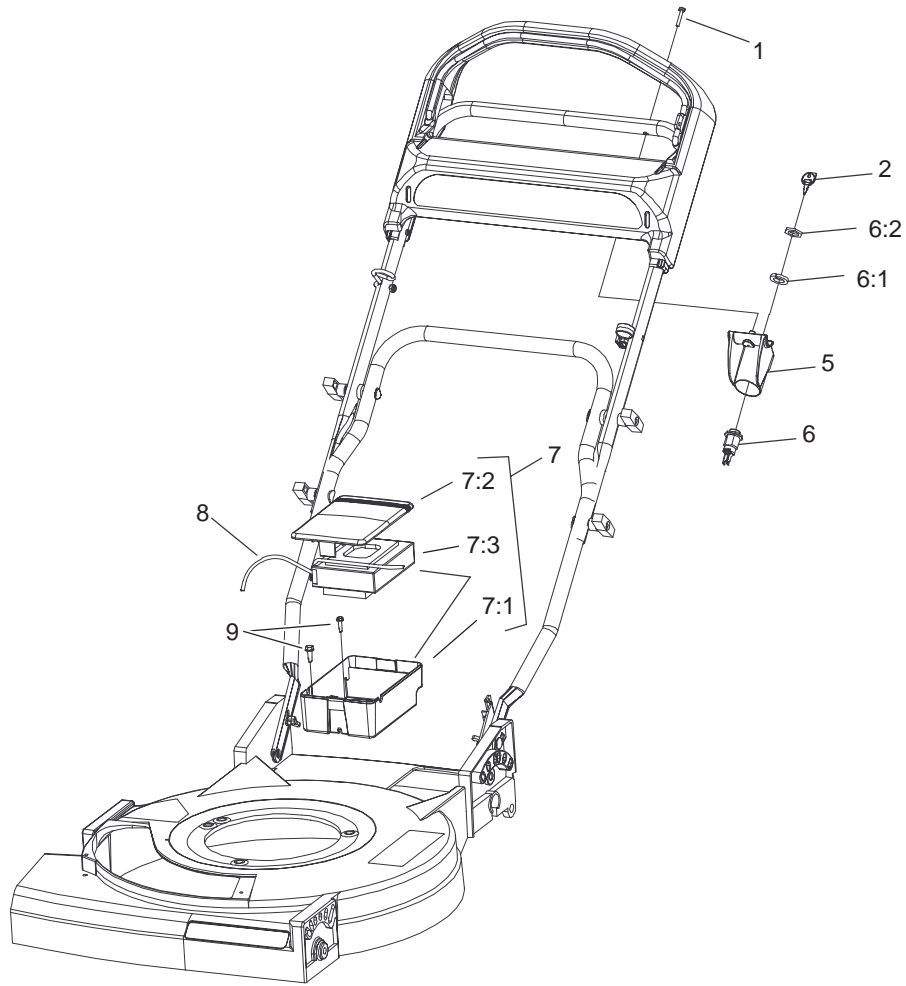
Ref. No.	Part No.	Qty.	Description
19	65-4720	2	Spring-Compression
20	94-1609	2	Cover-Wheel
21	614426	2	Washer-Stepped



Sheet No.:6

Handle Assembly

Ref. No.	Part No.	Qty.	Description	Ref. No.	Part No.	Qty.	Description
1	99-1593-03	1	Bail-Brake	25	86-9671	1	Guide-Rope
2	104-7680	1	Handle-Control	26	3296-73	2	Nut-Lock, NI
3	99-1595	1	Retainer-Cable, Brake	27	99-1590	2	Guide-Handle, Control
4	46-8091	1	Screw-HWH	28	94-4496	10	Screw-PPH
5	3256-71	1	Washer-Flat	29	104-7692-05	1	Handle-Upper
6	99-1589	1	Lever-Traction	30	99-6008	1	Retainer-Control Rod, Traction
7	104-7690	1	Spring-Torsion	31	99-1592	1	Spring-Torsion, RH
8	99-1588	1	Bar-Control, Traction	32	104-7960	1	Decal-Handle
9	3256-1	1	Washer-Flat	34	612824	1	Starter-Clip
10	99-5239	1	Anchor-Cable	35	612825	1	Handle-Start
11	95-7446	1	Cable - Throttle				
12	321-55	1	Screw-HH				
13	98-7134	4	Knob-Handle				
14	104-7693-05	1	Handle-Lower				
15	99-1584	1	Cable-Traction				
16	104-7928-03	1	Bracket-Cable, Traction				
17	3253-33	2	Washer-Lock				
18	32103-29	2	Nut-Wing				
19	3230-29	2	Screw-CARR				
20	32144-1	1	Screw-Taptite				
21	104-7697	1	Cable-Brake, Flywheel				
22	614697	2	Screw				
23	104-7691	2	Screw-Handle				
24	104-7658	2	Spacer-Handle				



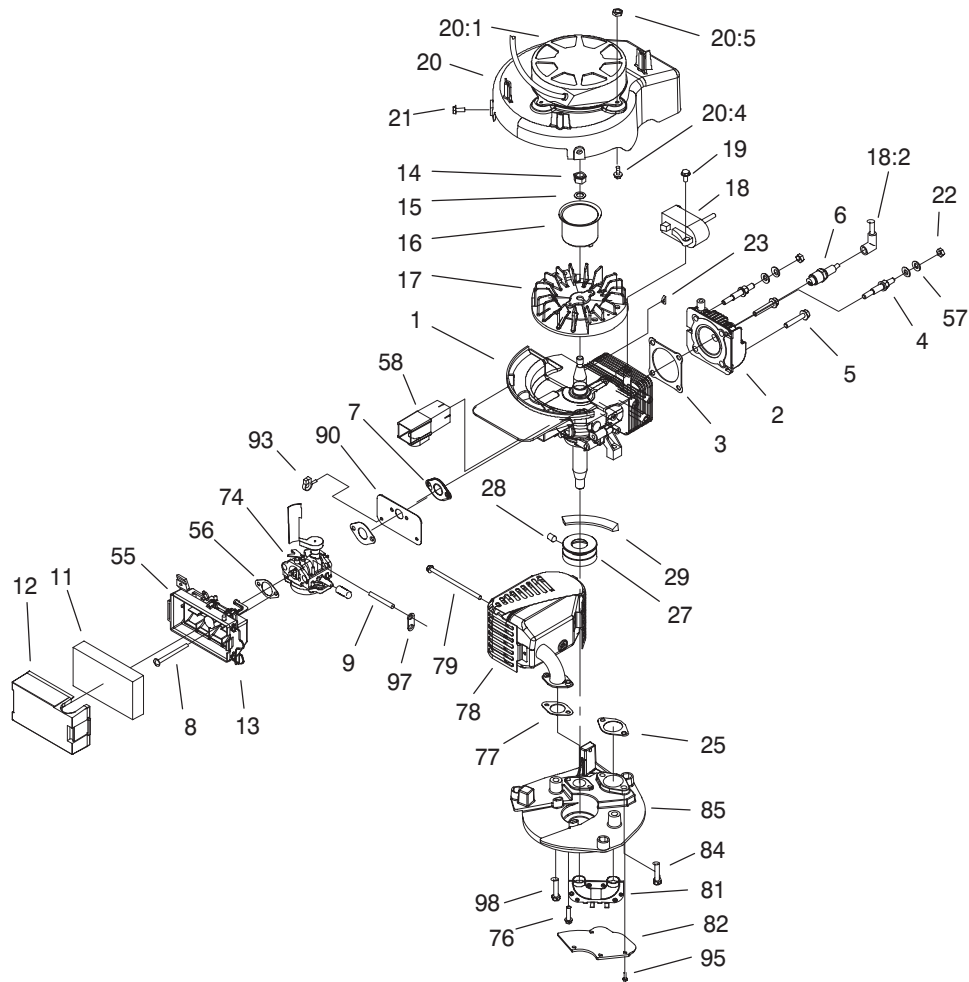
Sheet No.:7

Battery and Switch Assembly

Ref. No.	Part No.	Qty.	Description
1	32144-97	1	Screw-Plastite
2	98-4486	1	Key - Ignition
5	99-6006	1	Switch-Holder
6	46-5780	1	Switch-Starter
6:1	3254-5	1	Washer-Lock, Internal
6:2	218-461	1	Nut-HH
7	104-7682	1	Panasonic Battery ASM
7:1	104-7900	1	Box-Battery
7:2	104-7901	1	Cover-Battery
7:3	104-7903	1	Battery-Panasonic, 12v
8	100-1039	1	Harness-Wire
9	104-7649	2	Screw-Tek
*99	104-7401	1	Charger-12 Volt
*99	104-7953	1	Decal-Harness
*99	99-6124	2	Fuse - 40 Amp

Ref. No.	Part No.	Qty.	Description

* Not illustrated

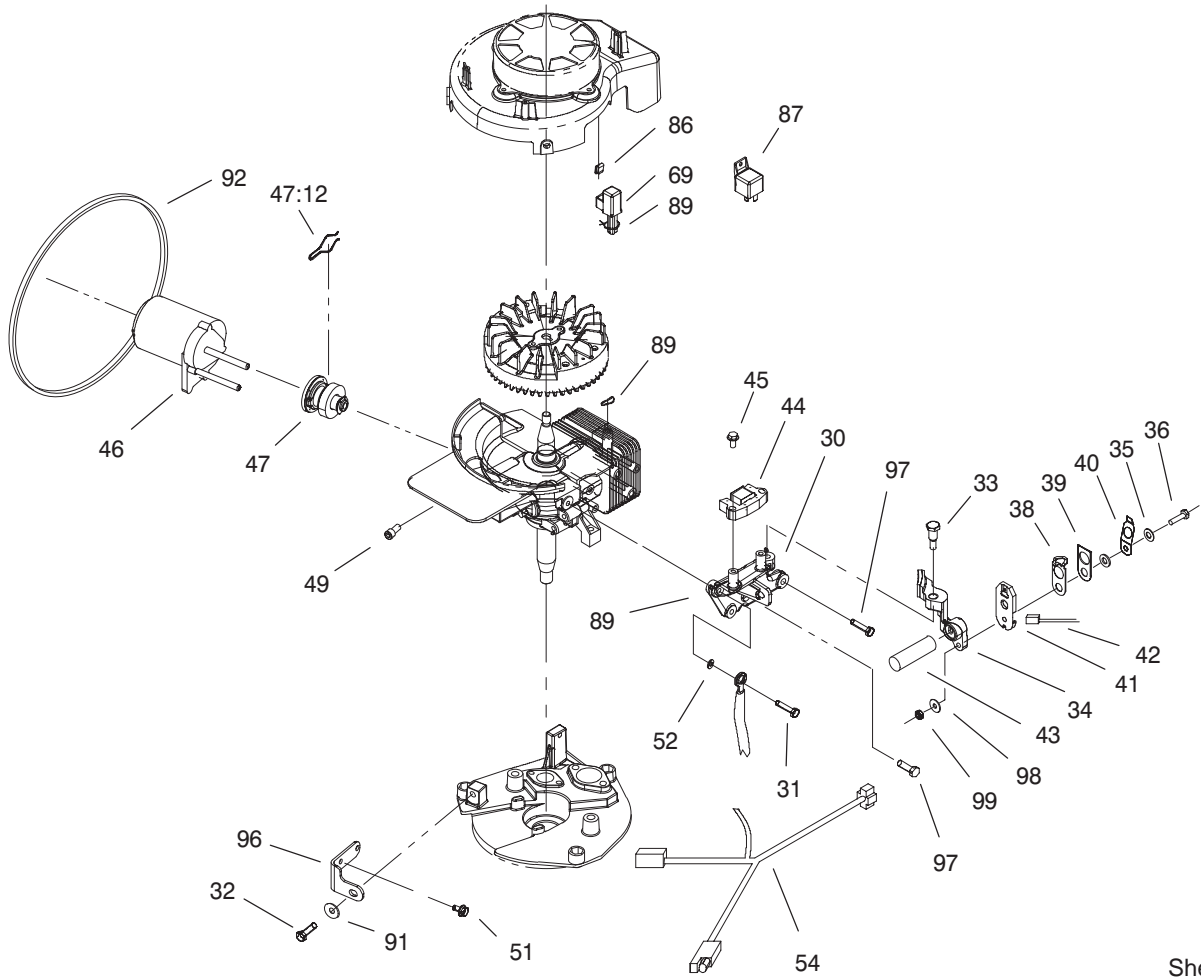


Sheet No.:2

Engine Assembly

Ref. No.	Part No.	Qty.	Description	Ref. No.	Part No.	Qty.	Description
1	95-7637	1	Short Block ASM	22	146501	2	Nut
2	94-5776	1	Head-Cylinder	23	607199	1	Key
3	94-5778	1	Gasket-Head	25	95-1778	1	Gasket-Exhaust
4	94-5779	2	Stud	27	95-1878	1	Pulley
5	94-5780	2	Bolt - Head	28	104-0214	1	Screw-Set, Cone Point
6	50-1170	1	Plug-Spark	29	62-3900	1	V-Belt
7	94-5795	2	Gasket-Intake	55	95-5588	1	Air Base ASM
8	612507	2	Screw	56	95-7613	1	Gasket-Filter
9	95-1861	1	Hose-Primer	57	3290-456	4	Washer-Belleville
11	95-5574	1	Filter-Air	58	95-5578	1	Tunnel-Inlet
12	95-5577	1	Cover-Filter, Air	74	98-7042	1	Carburetor ASM
13	610383	1	Retainer-Cover, Filter	76	613208	2	Screw
14	130743	1	Nut	77	98-1392	1	Gasket
15	316959	1	Washer-Lock	78	100-9514	1	Muffler And Guard ASM
16	95-1786	1	Cup-Starter	79	611228	1	Bolt-Console
17	95-1882	1	Flywheel	81	98-1557	1	Pipe-Transfer
18	99-2911	1	Module-Ign.	82	98-1591	1	Cover-Muffler
18:2	99-6719	1	Lead-Tension, High	84	322-17	2	Screw-HH
19	613208	4	Screw	85	98-1563	1	Plate-Muffler
20	95-1880	1	Shroud-Recoil	90	98-1388	1	Shield-Carburetor
20:1	99-6713	1	Recoil ASM	93	98-7012	2	Retainer-Wire
*20:1:1	613773	1	Rope	95	700822	4	Screw-HH
*20:1:2	100-9540	1	Retainer And Clip	97	95-7615	1	Hose-Retainer
20:4	3290-321	4	Screw-HWH	98	613233	2	Screw
20:5	3296-2	4	Nut-Lock				
21	700094	2	Screw-HH				

* Not illustrated



Sheet No.:3

Starter and Alternator Installation Assembly

Ref. No.	Part No.	Qty.	Description
30	95-1884	1	Bracket-Alternator/Brake
31	321-7	2	Screw-HH
32	3234-29	1	Screw-HHF
33	613529	1	Bolt
34	98-7008	1	Brake ASM
35	306407	2	Washer
36	321-6	1	Screw-HH
38	612841	1	Plate-Contact
39	612842	1	Shield
40	93-1239	1	Spring-Contact
41	93-4301	1	Case ASM
42	95-1886	1	Wire-Lead
43	611211	1	Spring-Brake
44	684115	1	Alternator ASM
45	613208	2	Screw
46	98-1370	1	Starter ASM
47	98-1371	1	Pinion ASM
47:12	613297	1	Spring - Drag
49	3274-10	1	Screw-HSH
51	700094	2	Screw-HH
52	306992	1	Washer-Lock
54	100-2926	1	Harness-Wire
*68	609790	1	Sealer-Loctite 50cc
69	100-2927	1	Rectifier
86	98-7003	1	Clip-Mounting

Ref. No.	Part No.	Qty.	Description
87	116397	1	Relay
89	317893	3	Strap-Tie
91	99-2900	1	Washer - Flat
92	3290-379	1	Tie-Cable
96	98-1390	1	Bracket
97	322-5	2	Screw-HH
98	3255-7	1	Washer-Lock/Ext
99	602315	2	Locknut

* Not illustrated

LAWN-BOY®