



SR-210S

Recycler[®] Mower

Model No. 20040-21000001 and Up

Parts Catalog

Ordering Replacement Parts

To order replacement parts, please supply: the part number, the quantity, and the description of each part desired.

Understanding Reference Numbers

Each identified part in an illustration has a reference number. The reference number for a part also appears in the parts list, along with other information about the part.

This catalog uses two special reference number formats, one to indicate parts in a service assembly and another to indicate the quantity of a given part in an illustration.

Service Assembly Reference Numbers

Parts in service assemblies have reference numbers in the form **a:b**. The **a** represents the reference number of the entire service assembly and the **b** represents a sequential number unique to each part within the service assembly.

For example, a wheel assembly might be identified by reference number **6**, the tire by **6:1**, the valve by **6:2**, and the wheel by **6:3**. When you order the assembly identified by reference number **6**, you receive all parts identified by reference numbers **6:1**, **6:2**, and **6:3**. However, you may also order any part individually.

Reference numbers of this type appear in illustrations and in part lists.

Reference Numbers Indicating Quantity

In an illustration, if a reference number indicates more than one part, the reference number has the form **nX y**. The **n** represents the quantity of the part, the **X** is the multiplication symbol, and the **y** represents the reference number.

For example, in an illustration, the reference number **2X 37** means that two of the parts identified by reference number **37** are indicated.

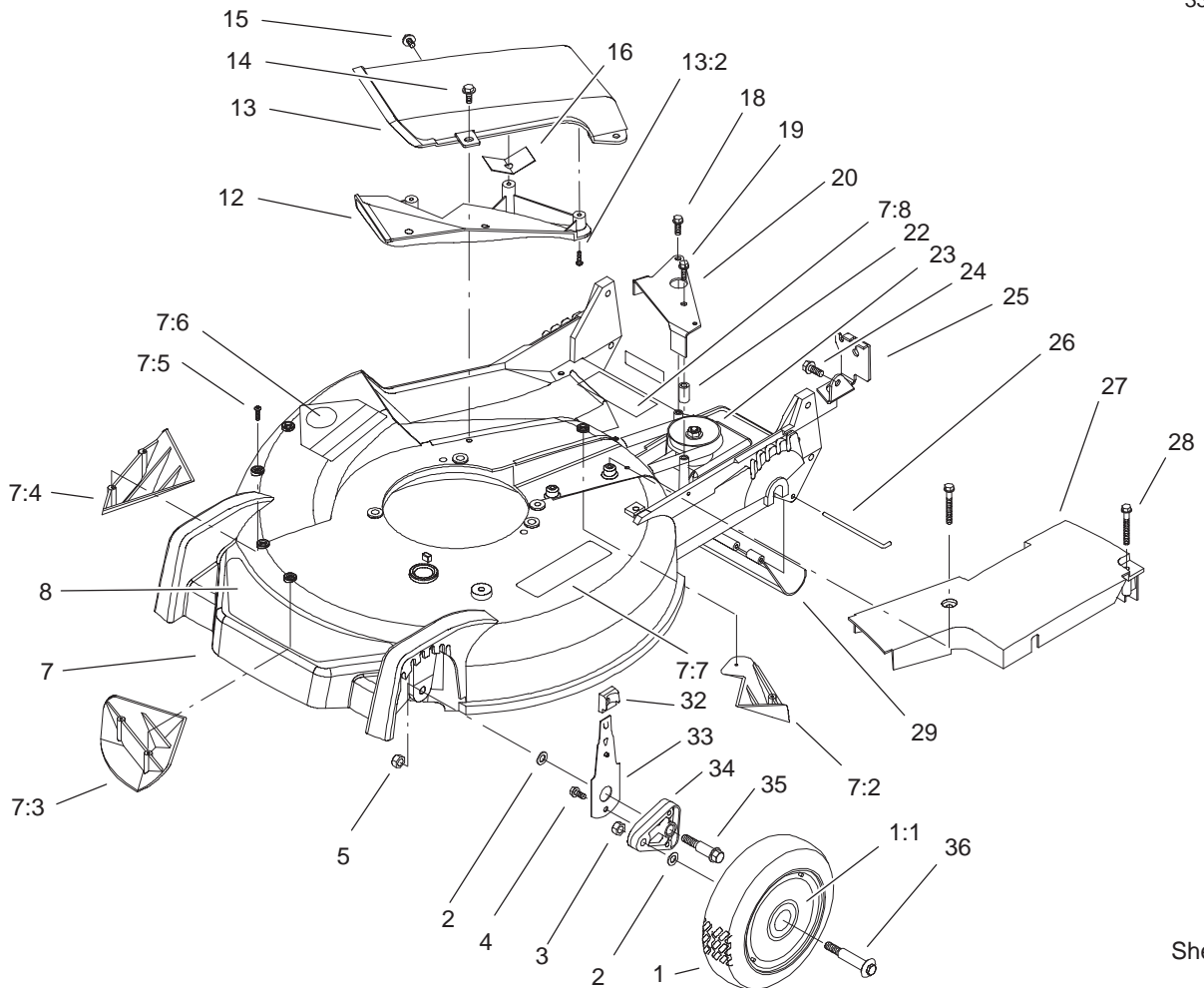
Contents

Description	Page	Description	Page
Housing and Wheel Assembly	3	Carburetor Assembly	11
Gear Case Assembly 104-7618	4	Governor Assembly	12
Gear Case and Wheel Assembly	5	Air Cleaner Assembly	13
Engine and Blade Assembly	6	Fuel Tank Assembly	14
Handle Assembly	7	Blower Housing and Flywheel Assembly	15
Cylinder Assembly	8	Rewind Starter Assembly	16
Cylinder Head Assembly	9	Gasket Assembly	17
Crankshaft and Piston Assembly	10		

Part Description Abbreviations

Part descriptions in this catalog may include the following abbreviations.

Abbreviation	Meaning	Abbreviation	Meaning
AR	as required	HYD	hydraulic
ASM	assembly	INC	incorporated
CARR	carriage	LH	left hand
DEG	degrees	NI	nylon insert
FH	flat head	PPH	Phillips pan head
GA	gauge	PTH	Phillips truss head
HF	hex flange	PTO	power take off
HH	hex head	RH	right hand
HHF	hex head flange	SFH	slotted fillister head
HLH	hex lag head	SHH	slotted hex head
HJ	hex jam	SQH	square head
HOC	height-of-cut	SHWH	slotted hex washer head
HS	hex socket	SPH	slotted pan head
HSBH	hex socket button head	SRH	slotted round head
HSFH	hex socket flat head	STD	standard
HSH	hex socket head	TAP	self tapping
HWH	hex washer head	TTH	Torx truss head
HWHTF	hex washer head thread forming	WH	wing head

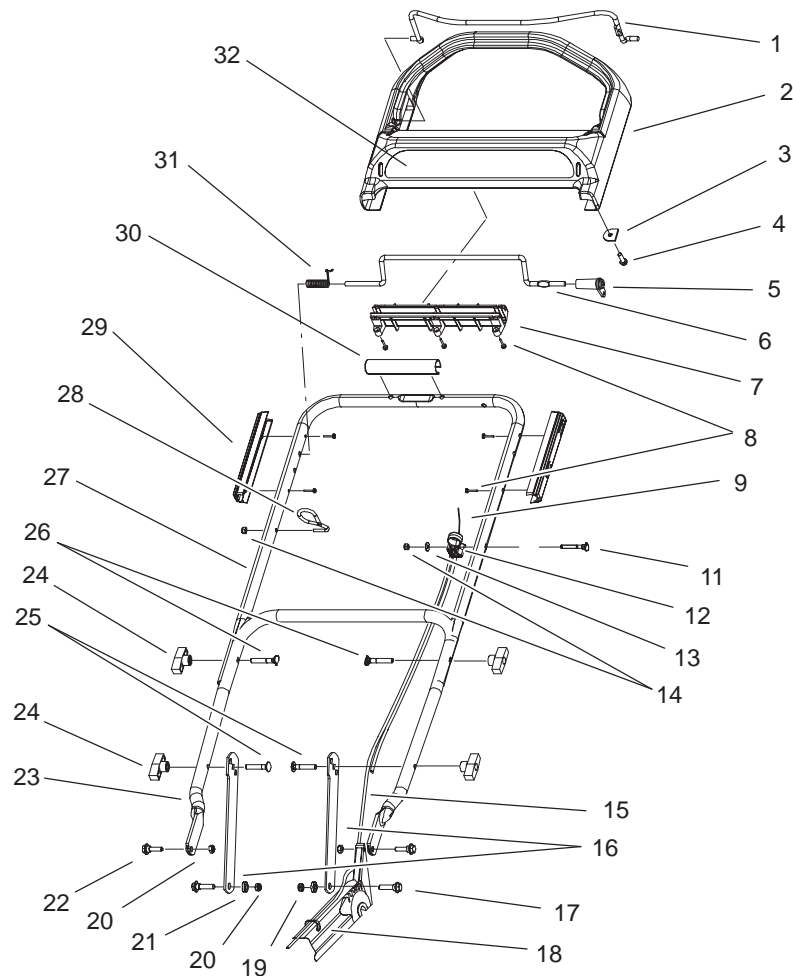


Sheet No.:2

Housing and Wheel Assembly

Ref. No.	Part No.	Qty.	Description
1	98-7130	2	Wheel ASM
1:1	27-6250	2	Bushing
2	40-1940	4	Washer
3	603773	2	Nut
4	32144-85	2	Screw-HH
5	3296-6	2	Nut-Lock, NI
7	98-7148	1	Housing
7:2	92-1750	1	Kicker-Rear
7:3	92-1720	1	Kicker-Front
7:4	92-1730	1	Kicker-RH
7:5	32144-111	6	Screw-PPH
7:6	43-8480	1	Decal-Danger
7:7	93-0248	1	Decal - Warning
7:8	99-6018	1	Decal - Warning
8	99-6010	1	Decal - Deck
12	82-8620	1	Deflector
13	100-8775	1	Recycler Cover ASM
13:2	32144-111	5	Screw-PPH
14	46-6811	3	Screw-HWH
15	46-6810	1	Screw & Washer ASM
16	83-4750	1	Cover Guard
18	49-2040	1	Screw-Tapping
19	92-1616	1	Screw-HWHTF
20	99-1513-03	1	Bracket-Transmission Actuator

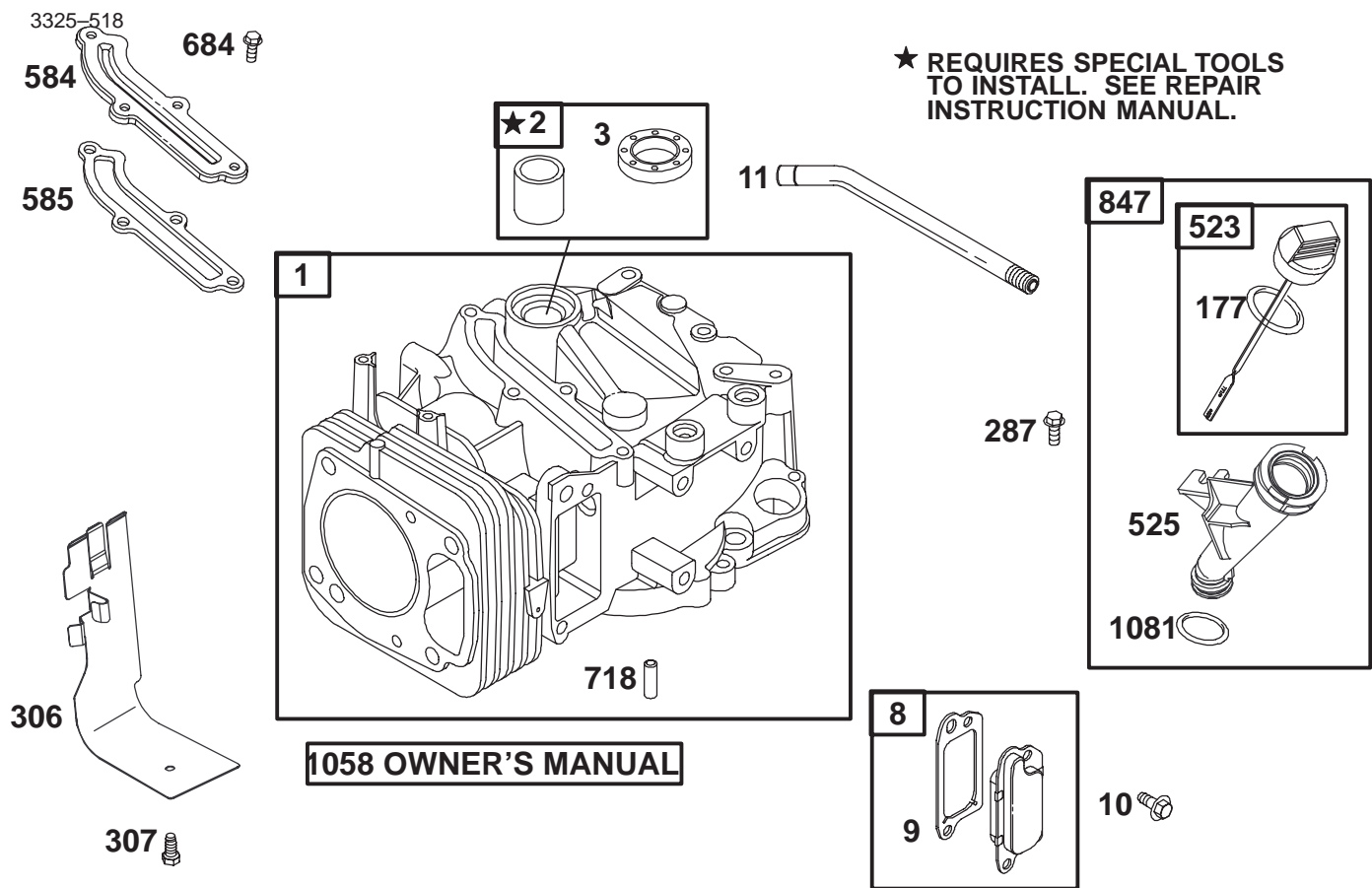
Ref. No.	Part No.	Qty.	Description
22	614673	1	Bushing-Plate, Actuator
23	104-7618	1	Gear Case ASM
24	32144-70	1	Screw-HH
25	99-1512-03	1	Bracket-Cable, Traction
26	33-3208	1	Rod-Shield
27	104-7906	1	Cover-Belt
28	37-7260	2	Screw-HH
29	44-0580	1	Shield-Trailing
32	25-7740	2	Knob-Arm
33	66-0541	2	Front Spring Arm ASM
34	66-0580	2	Arm-Pivot, Front
35	66-0560	2	Bolt-Shoulder
36	92-1057	2	Bolt-Shoulder



Sheet No.:8

Handle Assembly

Ref. No.	Part No.	Qty.	Description	Ref. No.	Part No.	Qty.	Description
1	99-1593-03	1	Bail-Brake	27	99-1596-05	1	Handle-Upper
2	99-1582	1	Handle-Control	28	86-9671	1	Guide-Rope
3	99-1595	1	Retainer-Cable, Brake	29	99-1590	2	Guide-Handle, Control
4	46-8091	1	Screw-HWH	30	99-6339	1	Cover-Handle
5	99-1589	1	Lever-Traction	31	99-1592	1	Spring-Torsion, RH
6	99-1588	1	Bar-Control, Traction	32	99-6009	1	Decal - Console
7	99-6008	1	Retainer-Control Rod, Traction				
8	94-4496	10	Screw-PPH				
9	100-1186	1	Cable-Brake				
11	95-4453	1	Screw-Handle				
12	99-5239	1	Anchor-Cable				
13	3256-1	1	Washer-Flat				
14	3296-73	2	Nut-Lock, NI				
15	99-1584	1	Cable-Traction				
16	99-5248-03	2	Latch-Handle				
17	27-7210	2	Screw-Shoulder				
18	100-2894	1	Tie-Cable				
19	3296-47	1	Nut-Lock, NI				
20	3296-72	3	Nut-Lock, NI				
21	3-3287	2	Spacer-Latch, Handle				
22	27-7211	2	Screw-Shoulder				
23	99-5249-05	1	Handle-Lower				
24	98-7134	4	Knob-Handle				
25	99-6019	2	Screw-CARR				
26	92-2260	2	Screw-Handle				



Assemblies include all parts shown in frames.

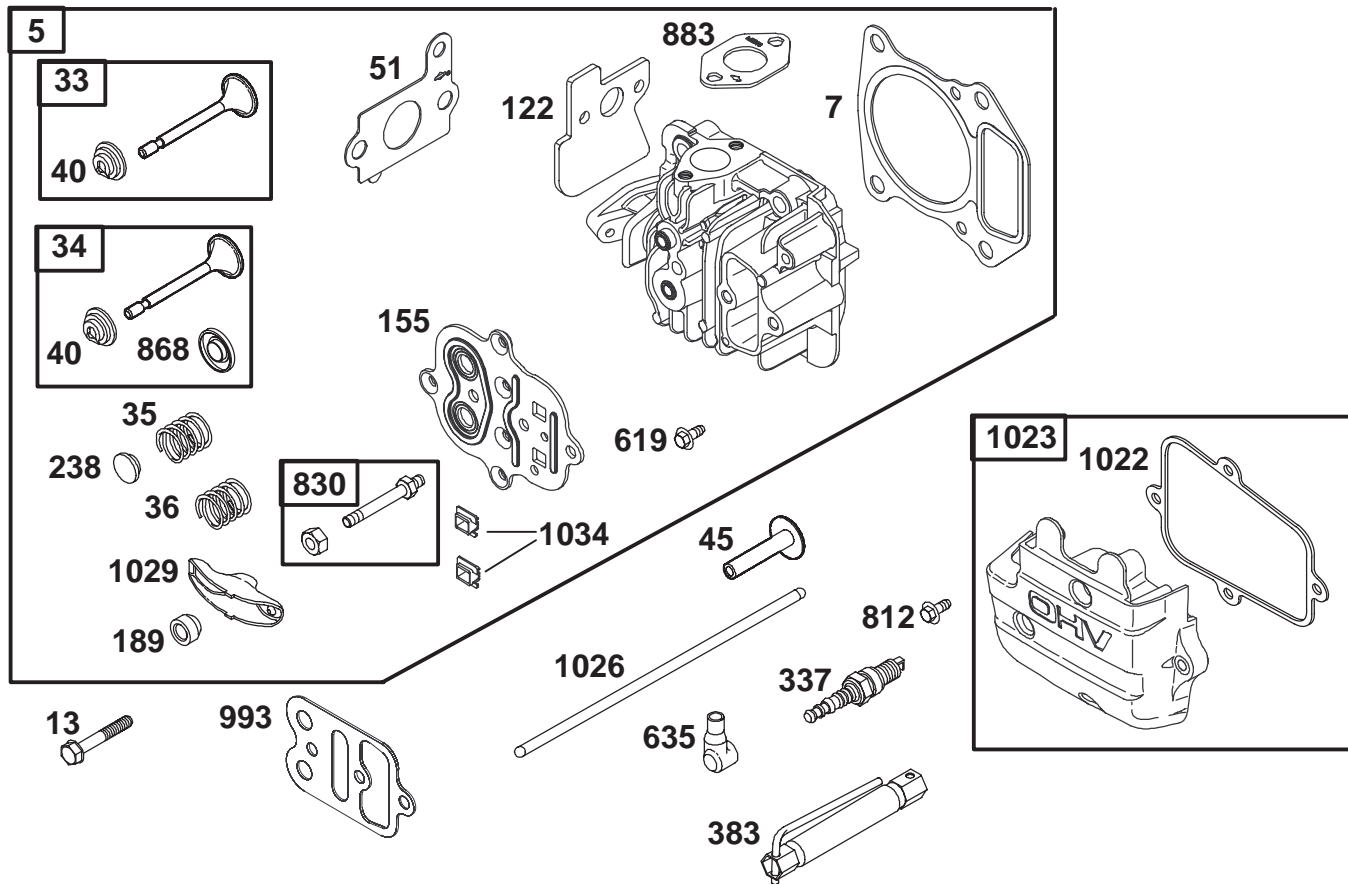
Cylinder Assembly

Ref. No.	Part No.	Qty.	Description
1	99-0900	1	Cylinder Assembly
2	99-0911	1	Bushing/Seal Kit
★3	99-0912	1	Oil Seal
8	77-9260	1	Breather Assembly
★△9	99-0913	1	Breather Gasket
10	99-0914	1	Screw (Breather Assembly)
11	99-0915	1	Breather Tube
★177	99-0916	1	O Ring Seal(Dipstick)
287	99-0927	1	Screw (Oil Fill Tube)
306	99-0919	1	Shield-Cylinder
307	99-0920	1	Screw(Cylinder Shield)
523	77-7260	1	Dipstick
525	99-0906	1	Dipstick Tube
584	99-0922	1	Breather Passage Cover
★585	99-0923	1	Breather Passage Gasket
684	99-0920	1	Screw (Breather Passage)
718	99-0928	1	Pin-Locating
847	99-9209	1	Dipstick/Tube Assembly
1058		1	Owner's Manual
★1081	99-0916	1	O-Ring Seal(Dipstick Tube)

Ref. No.	Part No.	Qty.	Description
	100-8797	1	—Not Illustrated— Block-Short, ZS (Incl. Ref. # 1-3, 684, 584, 585, 9, 718. Page 23: 51, 122, 883, 1022, 7, 45, 933. Page 24: 4, 20, 15, 12, 25-29, 16, 146, 741, 32, 46, 43, 22. Page 26: 404, 615, 616.

★ Included in Gasket Set—See Ref. 358.

△ Included in Valve Overhaul Gasket Set—See Ref. 1003.



Assemblies include all parts shown in frames.

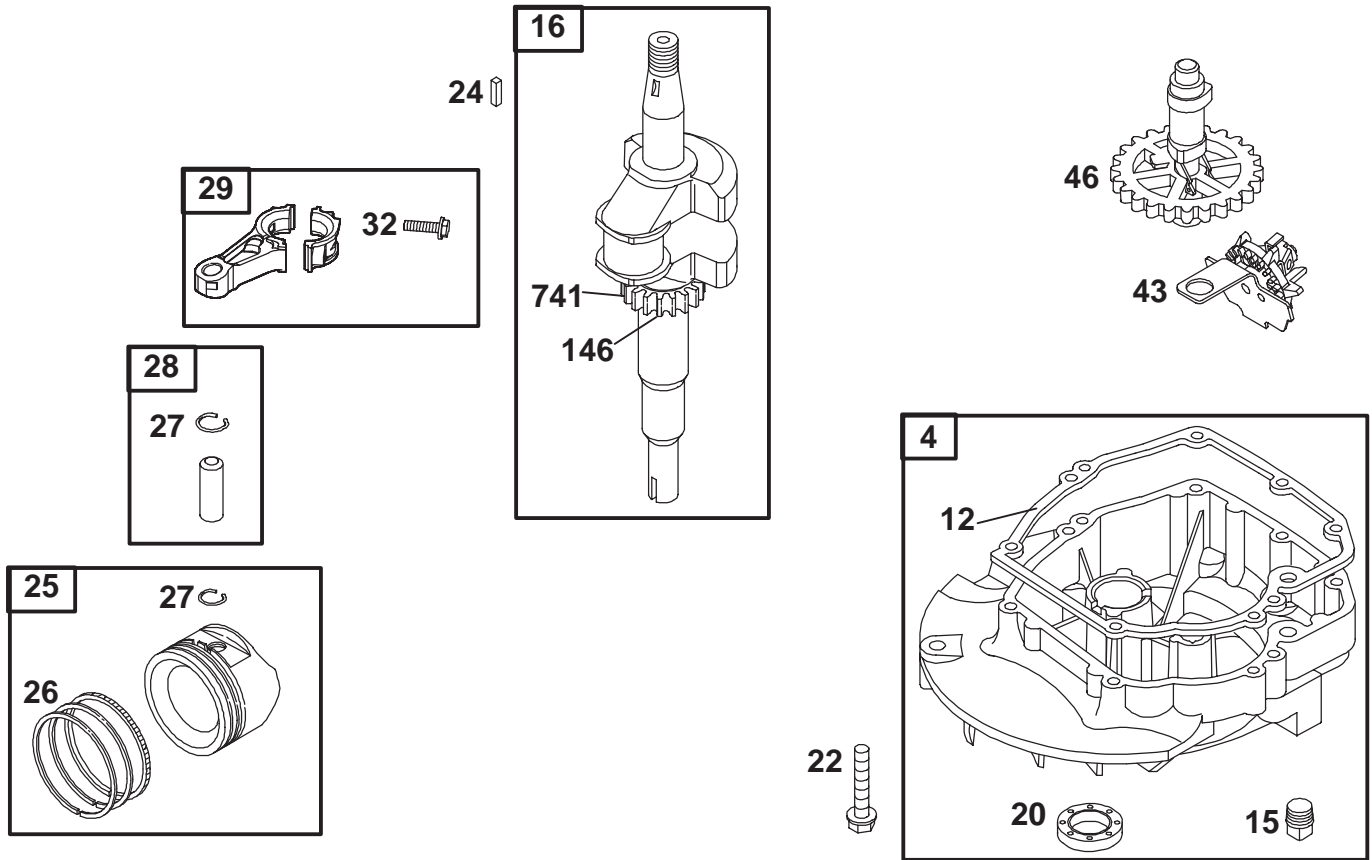
Cylinder Head Assembly

Ref. No.	Part No.	Qty.	Description
5	99-0929	1	Cylinder Head
★△7	99-0930	1	Cylinder Head Gasket
13	99-0931	1	Screw(Cylinder Head)
33	99-0932	1	Exhaust Valve
34	99-0933	1	Intake Valve
35	99-0934	1	Valve Spring (Intake)
36	99-0934	1	Valve Spring (Exhaust)
40	99-0935	1	Valve Retainer
45	99-0936	1	Valve Tappet
51	99-0968	1	Intake Gasket
◆●△122	99-0978	1	Carburetor Spacer
155	99-0938	1	Cylinder Head Plate
189	99-0939	1	Rocker Arm Ball
238	99-0940	1	Valve Cap
383	99-0944	1	Spark Plug Wrench
619	99-0941	1	Screw (Cylinder Head Plate)
635	77-9190	1	Spark Plug Boot
812	99-0942	1	Screw (Rocker Cover)
830	99-0945	1	Stud(Rocker Arm)
★△868	99-0946	1	Seal-Valve
★△883	99-0947	1	Exhaust Gasket
★△993	99-6264	1	Plate Gasket
★△1022	98-9211	1	Rocker Cover Gasket
1023	98-9211	1	Rocker Cover
1026	99-0949	1	Push Rod

Ref. No.	Part No.	Qty.	Description
1029	99-0950	1	Rocker Arm
1034	99-0951	1	Push Rod Guide
337	77-7330	1	Plug-Spark

★ Included in Gasket Set-See Ref. 358.
● Included in Carburetor Kit-See Ref. 121.

◆ Included in Carburetor Gasket Set-See Ref. 977.
△ Included in Valve Overhaul Gasket Set-See Ref. 1003.



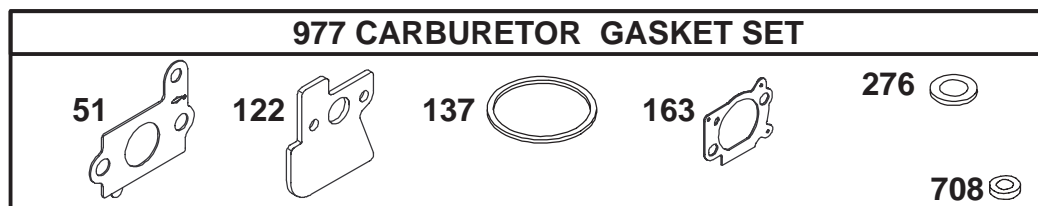
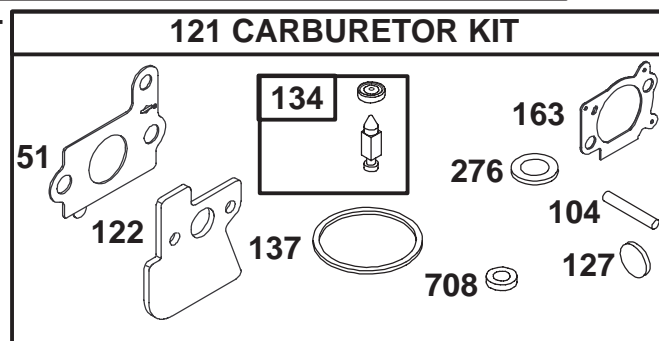
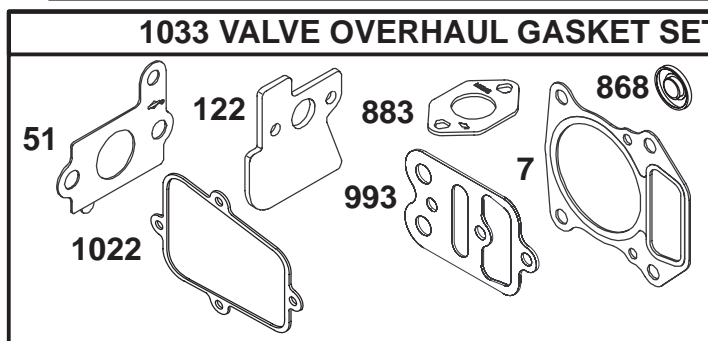
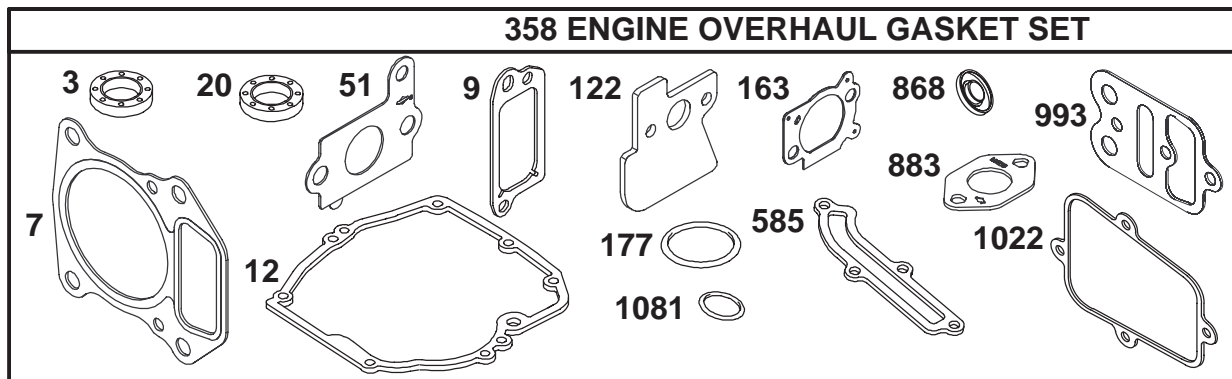
Assemblies include all parts shown in frames.

Crankshaft Assembly

Ref. No.	Part No.	Qty.	Description
4	99-0952	1	Engine Sump
★12	99-0953	1	Crankcase Gasket
15	99-0954	1	Oil Drain Plug
16	100-8796	1	Crankshaft
★20	99-0955	1	Oil Seal
22	99-0956	1	Screw (Engine Sump)
	99-1040	1	Screw (Engine Sump) ———— Note ——— (Used in Hole Nearest Breather)
24	99-0957	1	Flywheel Key
25	99-0958	1	Piston Assembly (Standard)
			———— Note ———
	100-5030	1	Piston Assembly (.010 O/S)
	100-5029	1	Piston Assembly (.020 O/S)
	100-5028	1	Piston Assembly (.030 O/S)
26	99-0959	1	Ring Set (Standard)
			———— Note ———
	100-5027	1	Ring Set(.010 O/S)
	100-5026	1	Ring Set(.020 O/S)
	100-5025	1	Ring Set(.030 O/S)
27	99-0960	1	Piston Pin Lock

Ref. No.	Part No.	Qty.	Description
28	99-0961	1	Piston Pin
29	99-0962	1	Connecting Rod
32	99-0963	1	Screw(Connecting Rod)
43	99-0964	1	Governor/Oil Slinger
46	99-0965	1	Camshaft
146	99-0966	1	Timing Key
741	99-0967	1	Gear-Timing

★ Included in Gasket Set—See Ref. 358.



Gasket Assembly

Ref. No.	Part No.	Qty.	Description
★3	99-0912	1	Oil Seal
★△7	99-0930	1	Cylinder Head Gasket
★△9	99-0913	1	Breather Gasket
★12	99-0953	1	Crankcase Gasket
★20	99-0955	1	Oil Seal
★◆△51	99-0968	1	Intake Gasket
●104	99-0970	1	Float Hinge Pin
121	100-5036	1	Carburetor Kit
★◆△122	99-0978	1	Carburetor Spacer
●127		1	Welch Plug (Sold in Kit Only)
●134	77-8110	1	Needle/Seat Kit
●◆137		1	Float Bow IGasket (Sold in Kit Only)
★◆●163	99-0976	1	Air Cleaner Gasket
★177	99-0916	1	O-Ring Seal (Dipstick)
●◆276	100-5038	1	Sealing Washer
358	100-5035	1	Engine Overhaul Gasket Set
★585	99-0923	1	Breather Passage Gasket
●◆708	100-5037	1	Seal-Dust
★△868	99-0946	1	Seal-Valve
★△883	99-0947	1	Exhaust Gasket
977	100-5034	1	Gasket Set-Carburetor
★△993	99-0948	1	Plate Gasket

Ref. No.	Part No.	Qty.	Description
★△1022	99-0907	1	Gasket-Rocker Cover
1033	100-5033	1	Valve Overhaul Gasket Set
★1081	99-0916	1	O-Ring Seal (Dipstick Tube)

★ Included in Gasket Set-See Ref. 358.

● Included in Carburetor Kit-See Ref. 121.

◆ Included in Carburetor Gasket Set-See Ref. 977.

△ Included in Valve Overhaul Gasket Set-See Ref. 1003.

