



SR-21OSK

Recycler[®] Mower

Model No. 20046-21000001 and Up

Parts Catalog

Ordering Replacement Parts

To order replacement parts, please supply: the part number, the quantity, and the description of each part desired.

Understanding Reference Numbers

Each identified part in an illustration has a reference number. The reference number for a part also appears in the parts list, along with other information about the part.

This catalog uses two special reference number formats, one to indicate parts in a service assembly and another to indicate the quantity of a given part in an illustration.

Service Assembly Reference Numbers

Parts in service assemblies have reference numbers in the form **a:b**. The **a** represents the reference number of the entire service assembly and the **b** represents a sequential number unique to each part within the service assembly.

For example, a wheel assembly might be identified by reference number **6**, the tire by **6:1**, the valve by **6:2**, and the wheel by **6:3**. When you order the assembly identified by reference number **6**, you receive all parts identified by reference numbers **6:1**, **6:2**, and **6:3**. However, you may also order any part individually.

Reference numbers of this type appear in illustrations and in part lists.

Reference Numbers Indicating Quantity

In an illustration, if a reference number indicates more than one part, the reference number has the form **nX y**. The **n** represents the quantity of the part, the **X** is the multiplication symbol, and the **y** represents the reference number.

For example, in an illustration, the reference number **2X 37** means that two of the parts identified by reference number **37** are indicated.

Contents

Description	Page	Description	Page
Housing and Wheel Assembly	3	Fuel Tank and Valve Assembly	12
Gear Case Assembly 104-7618	4	Flywheel/Ignition Assembly	13
Gear Case and Wheel Assembly	5	Carburetor Assembly	14
Engine and Blade Assembly	6	Piston/Crankshaft Assembly	15
Handle Assembly	7	Air Filter/Muffler Assembly	16
Cylinder/Crankcase Assembly	8	Cover/Cooling Assembly	17
Valve/Camshaft Assembly	9	Dipstick/Oil Filter Assembly	18
Control Linkage Assembly	10	Recoil Starter Assembly	19
Brake Band Assembly	11		

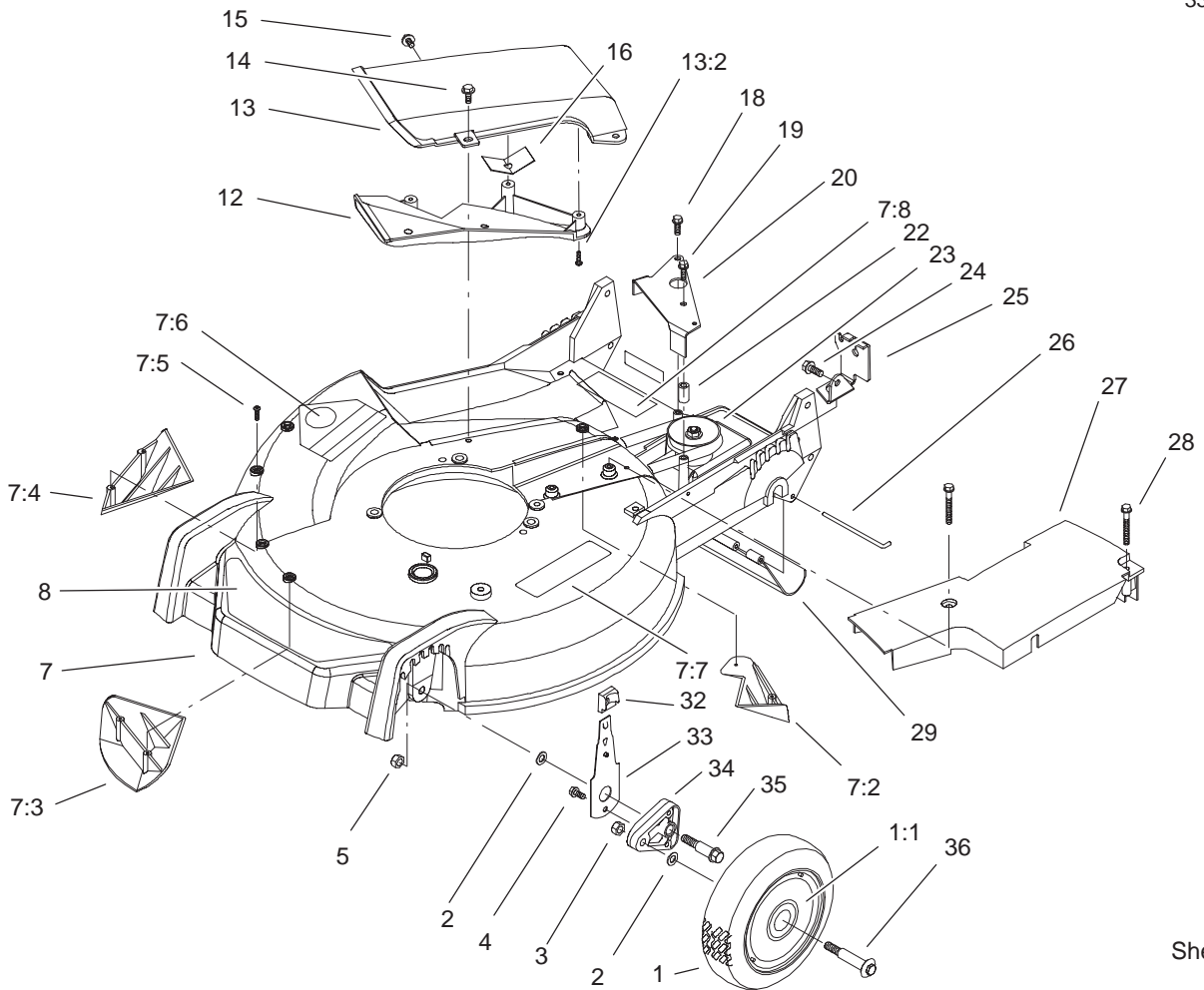
Accessories

Description	Model / Part No.	Description	Model / Part No.
.. Recycler Side Discharge Kit	59197	.. Recycler Bagging Kit	59195
.. Dethatcher Kit	59131	.. Traction Assist Handle	59196

Part Description Abbreviations

Part descriptions in this catalog may include the following abbreviations.

Abbreviation	Meaning	Abbreviation	Meaning
AR	as required	HYD	hydraulic
ASM	assembly	INC	incorporated
CARR	carriage	LH	left hand
DEG	degrees	NI	nylon insert
FH	flat head	PPH	Phillips pan head
GA	gauge	PTH	Phillips truss head
HF	hex flange	PTO	power take off
HH	hex head	RH	right hand
HHF	hex head flange	SFH	slotted fillister head
HLH	hex lag head	SHH	slotted hex head
HJ	hex jam	SQH	square head
HOC	height-of-cut	SHWH	slotted hex washer head
HS	hex socket	SPH	slotted pan head
HSBH	hex socket button head	SRH	slotted round head
HSFH	hex socket flat head	STD	standard
HSH	hex socket head	TAP	self tapping
HWH	hex washer head	TTH	Torx truss head
HWHTF	hex washer head thread forming	WH	wing head

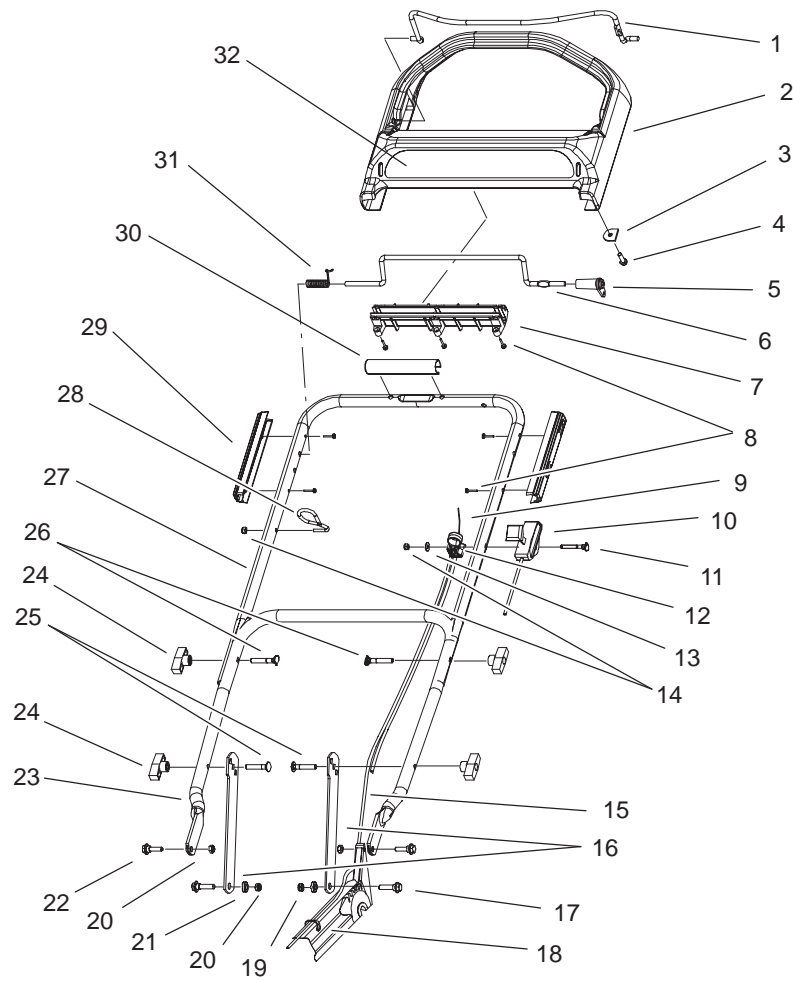


Sheet No.:2

Housing and Wheel Assembly

Ref. No.	Part No.	Qty.	Description
1	98-7130	2	Wheel ASM
1:1	27-6250	2	Bushing
2	40-1940	4	Washer
3	603773	2	Nut
4	32144-85	2	Screw-HH
5	3296-6	2	Nut-Lock, NI
7	100-2887	1	Housing
7:2	92-1750	1	Kicker-Rear
7:3	92-1720	1	Kicker-Front
7:4	92-1730	1	Kicker-RH
7:5	32144-111	6	Screw-PPH
7:6	43-8480	1	Decal-Danger
7:7	93-0248	1	Decal - Warning
7:8	99-6018	1	Decal - Warning
8	99-6347	1	Decal - Deck
12	82-8620	1	Deflector
13	100-8775	1	Recycler Cover ASM
13:2	32144-111	5	Screw-PPH
14	46-6811	3	Screw-HWH
15	46-6810	1	Screw & Washer ASM
16	83-4750	1	Cover Guard
18	49-2040	1	Screw-Tapping
19	92-1616	1	Screw-HWHTF
20	99-1513-03	1	Bracket-Transmission Actuator

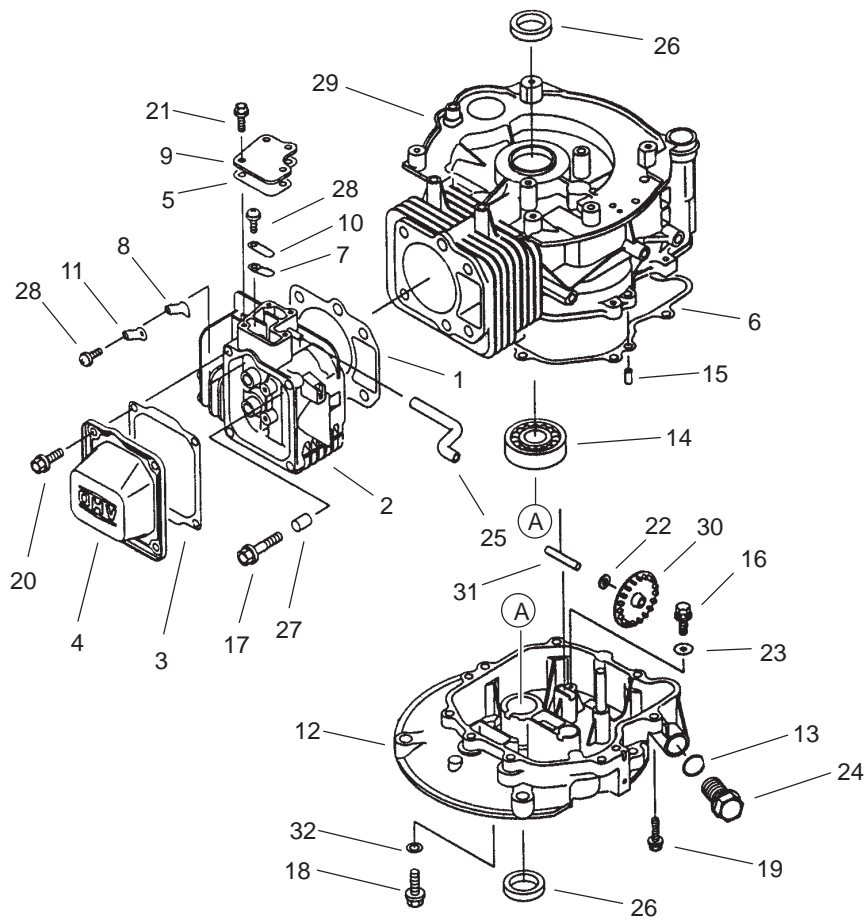
Ref. No.	Part No.	Qty.	Description
22	614673	1	Bushing-Plate, Actuator
23	104-7618	1	Gear Case ASM
24	32144-70	1	Screw-HH
25	99-1512-03	1	Bracket-Cable, Traction
26	33-3208	1	Rod-Shield
27	100-1182	1	Belt Cover ASM
28	37-7260	2	Screw-HH
29	44-0580	1	Shield-Trailing
32	25-7740	2	Knob-Arm
33	66-0541	2	Front Spring Arm ASM
34	66-0580	2	Arm-Pivot, Front
35	66-0560	2	Bolt-Shoulder
36	92-1057	2	Bolt-Shoulder



Sheet No.:8

Handle Assembly

Ref. No.	Part No.	Qty.	Description	Ref. No.	Part No.	Qty.	Description
1	99-1593-03	1	Bail-Brake	26	92-2260	2	Screw-Handle
2	99-1582	1	Handle-Control	27	99-1596-05	1	Handle-Upper
3	99-1595	1	Retainer-Cable, Brake	28	86-9671	1	Guide-Rope
4	46-8091	1	Screw-HWH	29	99-1590	2	Guide-Handle, Control
5	99-1589	1	Lever-Traction	30	99-6339	1	Cover-Handle
6	99-1588	1	Bar-Control, Traction	31	99-1592	1	Spring-Torsion, RH
7	99-6008	1	Retainer-Control Rod, Traction	32	100-8783	1	Decal-Personal Pace
8	94-4496	10	Screw-PPH				
9	100-6392	1	Cable-Brake				
10	100-6396	1	Control-Throttle				
11	321-55	1	Screw-HH				
12	99-5239	1	Anchor-Cable				
13	3256-1	1	Washer-Flat				
14	3296-73	2	Nut-Lock, NI				
15	99-1584	1	Cable-Traction				
16	99-5248-03	2	Latch-Handle				
17	27-7210	2	Screw-Shoulder				
18	100-2894	1	Tie-Cable				
19	3296-47	1	Nut-Lock, NI				
20	3296-72	3	Nut-Lock, NI				
21	3-3287	2	Spacer-Latch, Handle				
22	27-7211	2	Screw-Shoulder				
23	99-5249-05	1	Handle-Lower				
24	98-7134	4	Knob-Handle				
25	99-6019	2	Screw-CARR				

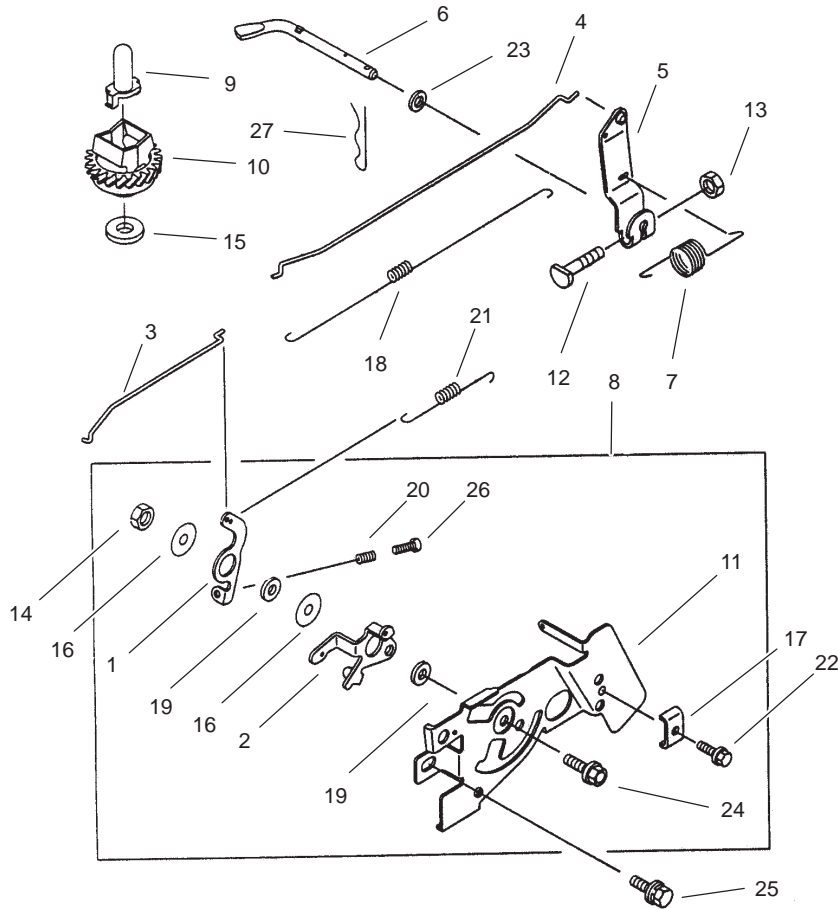


Sheet No.:3

Cylinder/Crankcase Assembly

Ref. No.	Part No.	Qty.	Description
1	100-2742	1	Gasket-Head
2	100-2743	1	Head-Cylinder, Complete
3	100-2744	1	Gasket-Case, Rocker
4	100-2834	1	Case Rocker
5	100-2746	1	Cover-Gasket
6	100-2747	1	Gasket-Cover, Crankcase
7	100-2748	1	Plate
8	100-2749	1	Plate
9	100-2779	1	Cover
10	100-2780	1	Valve
11	100-2781	1	Valve
12	100-2833	1	Cover Crankcase
13	100-2840	1	O-Ring
14	100-2841	1	Bearing-Ball
15	93-8516	2	Pin
16	100-2842	1	Bolt
17	KW10035	4	Bolt-Flanged
18	KW10033	1	Bolt-Flanged
19	100-2610	7	Bolt-Flanged
20	100-2804	4	Bolt-Flanged
21	100-2609	4	Bolt-Flanged
22	100-2843	1	Washer
23	100-2844	1	Washer
24	100-2854	1	Plug

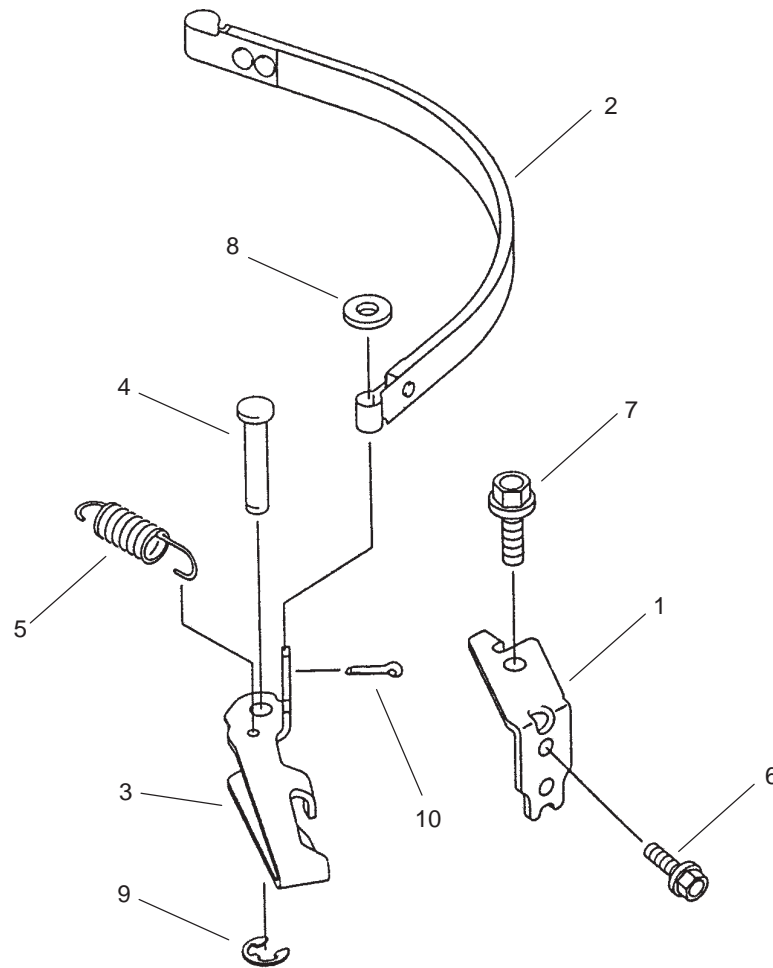
Ref. No.	Part No.	Qty.	Description
25	100-2846	1	Tube
26	100-2847	2	Seal-Oil
27	100-2848	2	Pin
28	93-8549	2	Screw
29	100-2849	1	Crankcase-Complete
30	99-6728	1	Slinger-Oil
31	99-6729	1	Shaft
32	99-6730	1	Gasket



Sheet No.:5

Control Linkage Assembly

Ref. No.	Part No.	Qty.	Description	Ref. No.	Part No.	Qty.	Description
1	100-2700	1	Lever	26	100-2725	1	Screw-Pan
2	100-2701	1	Lever	27	93-8607	1	Pin-Snap
3	100-2702	1	Link-Choke				
4	100-2703	1	Link				
5	100-2704	1	Arm ASM				
6	100-2705	1	Arm-Pivot				
7	100-2706	1	Spring-Governor				
8	100-2707	1	Control Panel ASM				
9	100-2708	1	Sleeve				
10	93-8611	1	Governor ASM				
11	100-2710	1	Panel-Control				
12	93-8606	1	Bolt				
13	93-8631	1	Nut				
14	93-8595	1	Nut				
15	94-6842	1	Washer				
16	100-2715	2	Washer				
17	95-9849	1	Clamp				
18	100-2717	1	Link-Spring				
19	100-2718	2	Collar				
20	93-8588	1	Spring				
21	100-2720	1	Spring				
22	95-9853	1	Bolt				
23	93-8608	1	Washer				
24	95-9837	1	Bolt - Flanged				
25	100-2724	2	Bolt				

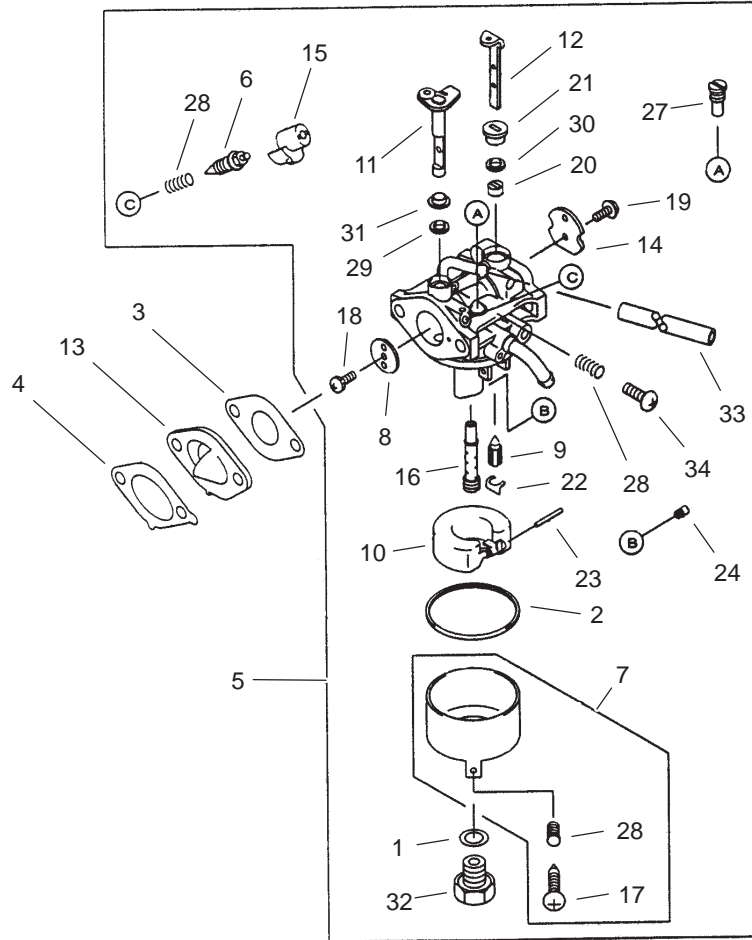


Sheet No.:6

Brake Band Assembly

Ref. No.	Part No.	Qty.	Description
1	100-2783	1	Bracket
2	100-2784	1	Band-Brake
3	100-2785	1	Lever-Brake
4	100-2786	1	Pin
5	100-2787	1	Spring
6	100-2609	1	Bolt-Flanged
7	KW10029	1	Bolt, Flanged
8	100-2671	1	Washer Plain S
9	100-2791	1	Circlip-Type-E
10	100-2792	2	Pin Cotter

Ref. No.	Part No.	Qty.	Description



Sheet No.:9

Carburetor Assembly

Ref. No.	Part No.	Qty.	Description
1	100-2611	1	Gasket
2	100-2612	1	Gasket
3	100-2613	1	Gasket-Carburetor
4	100-2614	1	Gasket-Insulator
5	100-2615	1	Carburetor ASM
6	100-2616	1	Screw-Pilot, Air
7	100-2617	1	Float-Chamber
8	100-2618	1	Valve-Throttle
9	100-2619	1	Valve-Float
10	100-2620	1	Float
11	100-2621	1	Shaft-Throttle, Carburetor
12	100-2622	1	Shaft-Choke, Carburetor
13	100-2623	1	Insulator
14	100-2624	1	Valve
15	100-2625	1	Limiter
16	100-2626	1	Nozzle-Main
17	100-2627	1	Screw
18	100-2628	1	Screw
19	100-2629	2	Screw
20	100-2630	1	Collar
21	100-2631	1	Collar
22	KW10297	1	Clip
23	100-2633	1	Pin
24	100-2634	1	Jet-Main

Ref. No.	Part No.	Qty.	Description
27	100-2635	1	Jet-Pilot
28	100-2636	3	Spring
29	100-2637	1	Seal
30	100-2638	1	Seal
31	100-2639	1	Collar
32	100-2640	1	Bolt
33	100-2641	1	Tube
34	100-2642	1	Screw-Pan

