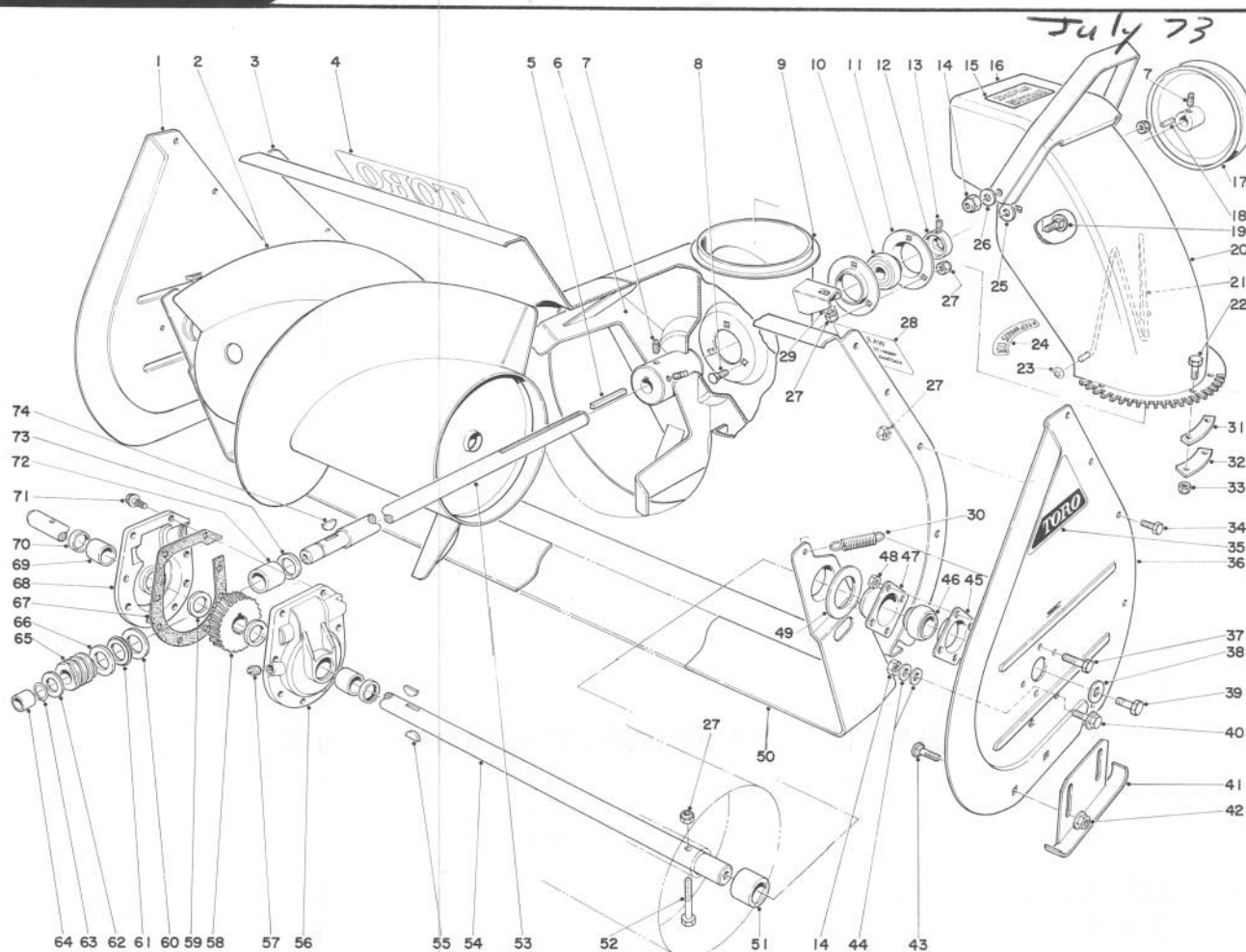


**TORO®**

MODEL NO. 31763-400001 & UP  
 MODEL NO. 31756-400001 & UP  
 MODEL NO. 31263-400001 & UP

# PARTS CATALOG

## 726 SNOWTHROWER



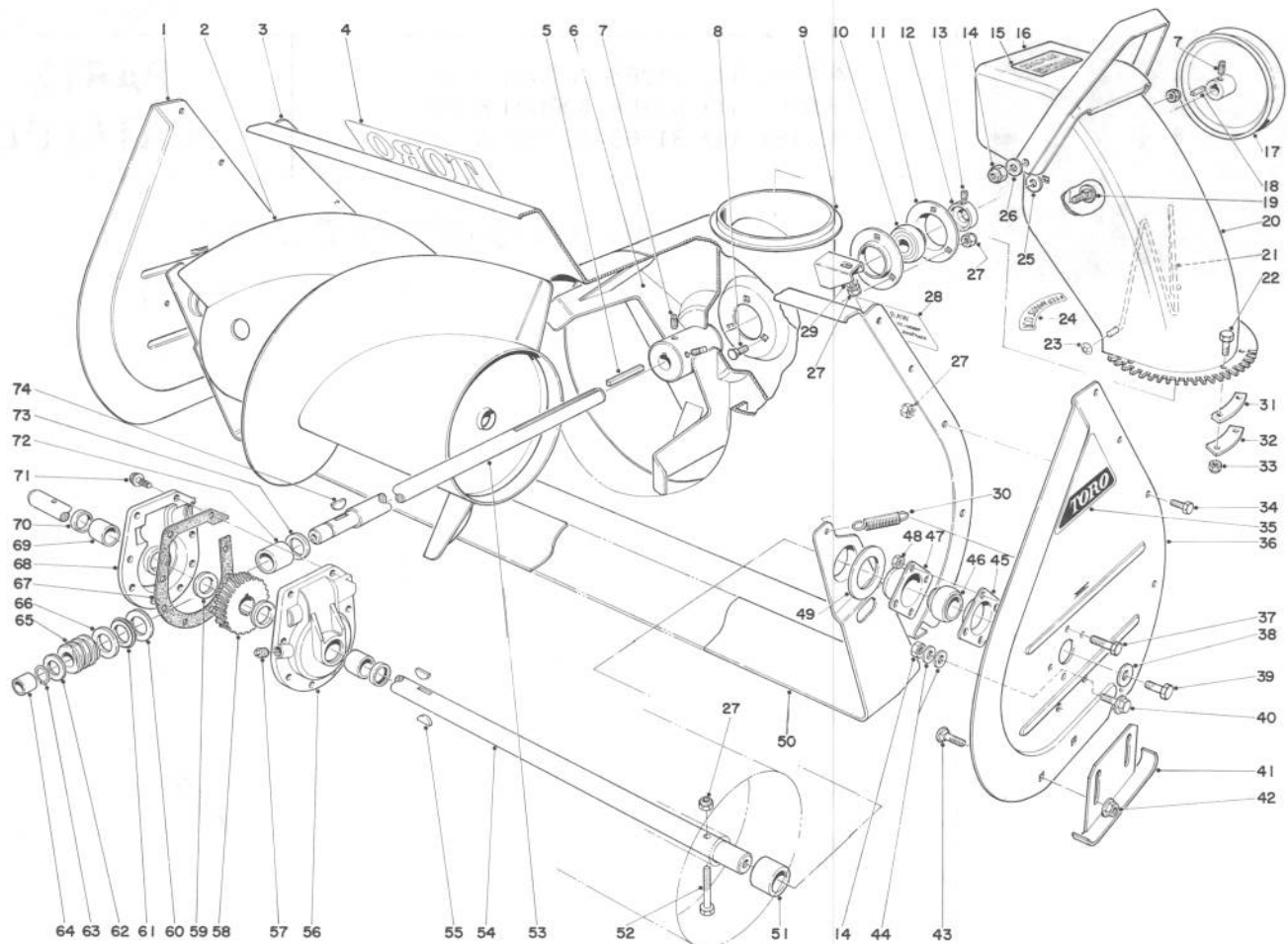
### AUGER ASSEMBLY

Ref. No.	Part No.	Description	No. Used	Ref. No.	Part No.	Description	No. Used
1	8-8450	Auger Side Plate (R.H.)	1	13	3245-32	Set Screw	2
2	11-6900	Auger (R.H.)	1	14	32152-2	Locknut	4
*	11-6890	Auger (L.H.)	1	15	10-2980	Decal, Warning	1
3	5-8579	Auger Housing (Incl. Ref. 28)	1	16	5-8589	Deflector (Incl. Ref. 15)	1
4	18-2150	Decal	1	17	5-7400	Impeller Pulley	1
5	6-8590	Key	1	18	3-6857	Key	1
6	19-8890	Impeller	1	19	3231-27	Carriage Bolt	2
7	3242-4	Set Screw	4	20	8-9130	Upper Chute	1
8	3230-1	Carriage Bolt	3	21	12-2040	Chute Wire	1
9	5-7250	Collar Support	1	22	3290-359	Capscrew	6
10	251-224	Bearing	1	23	3290-326	Push Nut	2
11	251-229	Bearing Flange	2	24	5-9830	Decal	1
12	251-231	Locking Collar	1	25	20-4320	Rubber Washer	2

\*Not Illustrated

Copyright 1973 by  
**The Toro Company**  
 Bloomington, Minnesota 55420 U.S.A.

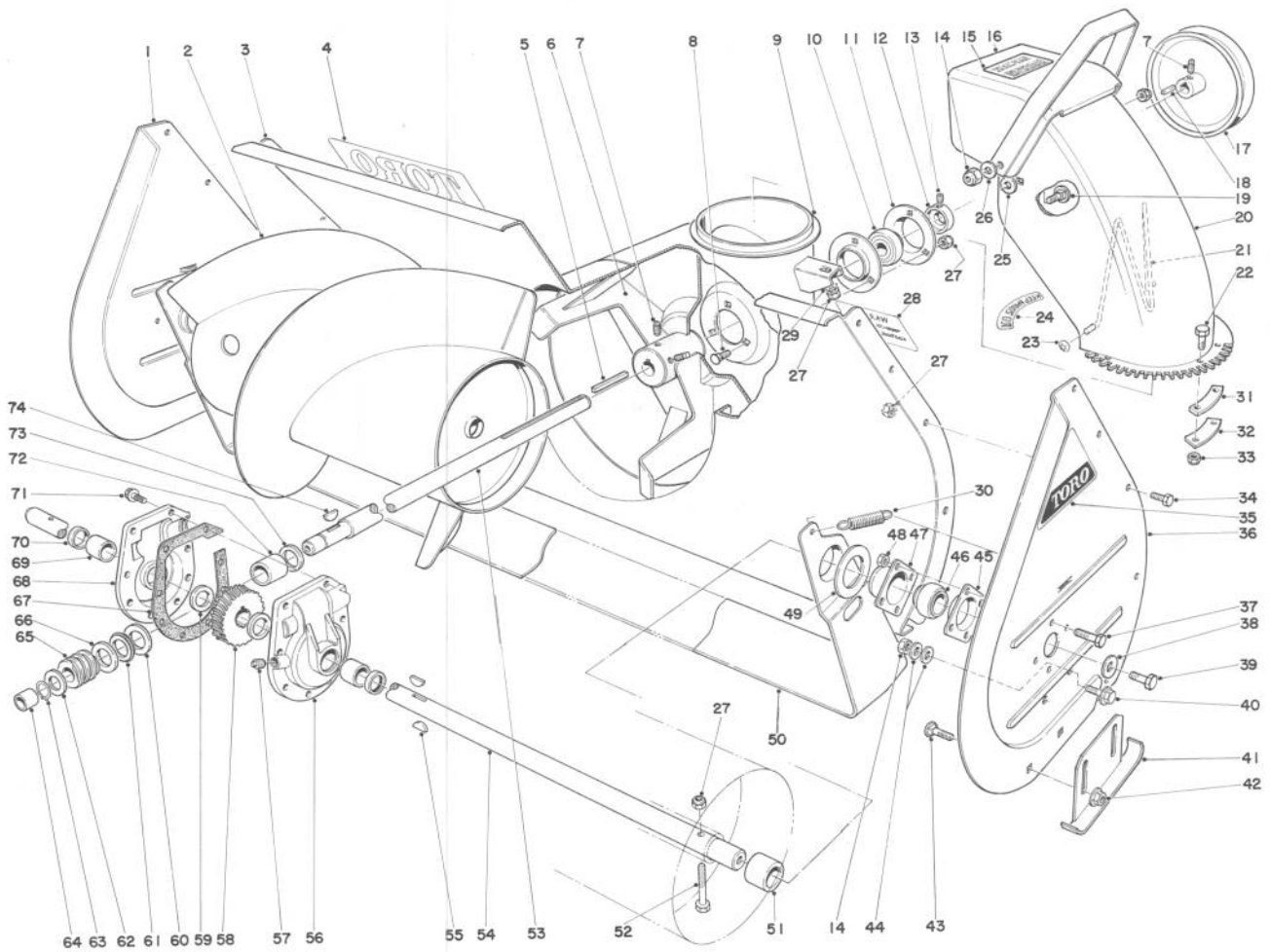
Price \$1.00



## AUGER ASSEMBLY (Continued)

Ref. No.	Part No.	Description	No. Used
26	3290-340	Washer — Belleville	2
27	32152-1	Locknut	16
28	10-2970	Decal	1
29	3290-238	Pyramidal Washer	1
30	5-7290	Scraper Spring	2
31	6-5560	Chute Tab Spacer	3
32	6-5570	Upper Chute Tab	3
33	32146-18	Locknut	6
34	322-2	Capscrew	10
35	17-6500	Decal	2
36	8-8440	Sideplate (L.H.)	1
37	321-3	Capscrew	8
38	3-0750	Flatwasher	2
39	323-6	Capscrew	2
40	3234-1	Capscrew	2
41	8-8460	Skid	2
42	3290-357	Flange Nut	4
43	3231-27	Carriage Bolt	4
44	3256-4	Washer	4
45	20-1000	Bearing Flange Rear	2

Ref. No.	Part No.	Description	No. Used
46	20-0980	Bearing	2
47	20-0990	Bearing Flange Front	2
48	32152-4	Locknut	8
49	20-0300	Scraper Blade Spacer	2
50	19-9140	Scraper Blade	1
51	19-9150	Auger Spacer	2
52	17-7030	Auger Bolt	2
53	19-8540	Impeller Shaft	1
54	11-7000	Auger Shaft	1
55	3257-33	Woodruff Key	2
56	19-6970	Gear Case L.H. (Incl. Ref. 69 & 70)	1
57	281-1	Pipe Plug	1
58	5-7180	Worm Gear	1
59	252-71	Thrust Bearing	2
60	252-78	Thrust Washer	1
61	252-76	Thrust Bearing	1
62	3-8664	Washer	1
63	32120-72	Retaining Ring	1
64	256-32	Bushing	1



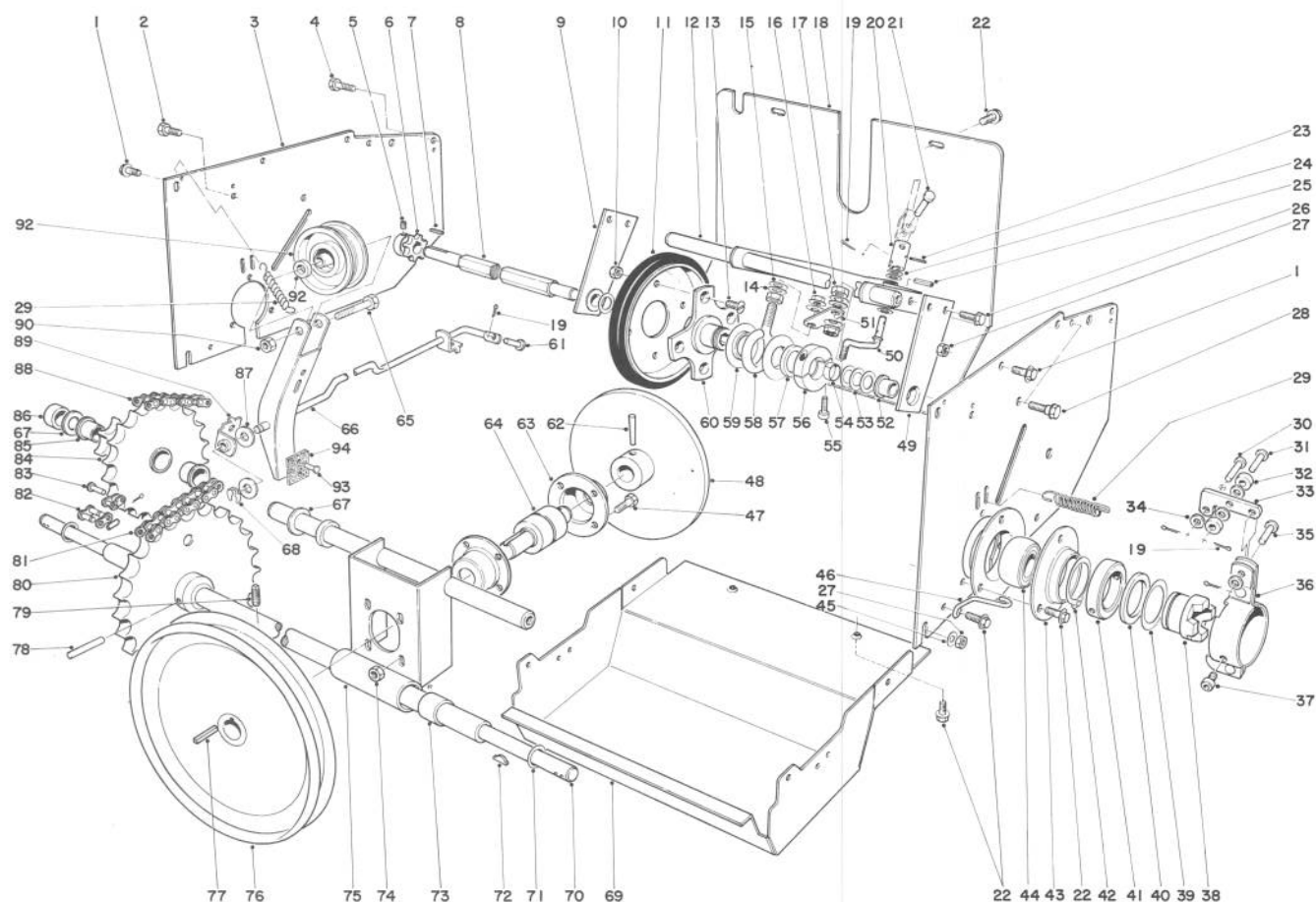
## AUGER ASSEMBLY (Continued)

Ref. No.	Part No.	Description	No. Used
65	5-7170	Worm	1
66	252-77	Thrust Washer	1
67	19-8520	Gasket	1
68	19-6980	Gear Case R.H. (Incl. Ref. 69 & 70)	1
69	256-237	Bushing	2
70	7-0045	Oil Seal	2

Ref. No.	Part No.	Description	No. Used
71	32144-11	Self-Tapping Screw	8
72	20-3210	Bushing	1
73	237-87	Seal	1
74	3257-23	Woodruff Key	1
*	20-0640	Drift Breaker Kit Optional	1
*	20-2850	Heavy Duty Skid Kit Optional	1
**	19-6990	Gear Case Assembly Complete	1

\*Optional

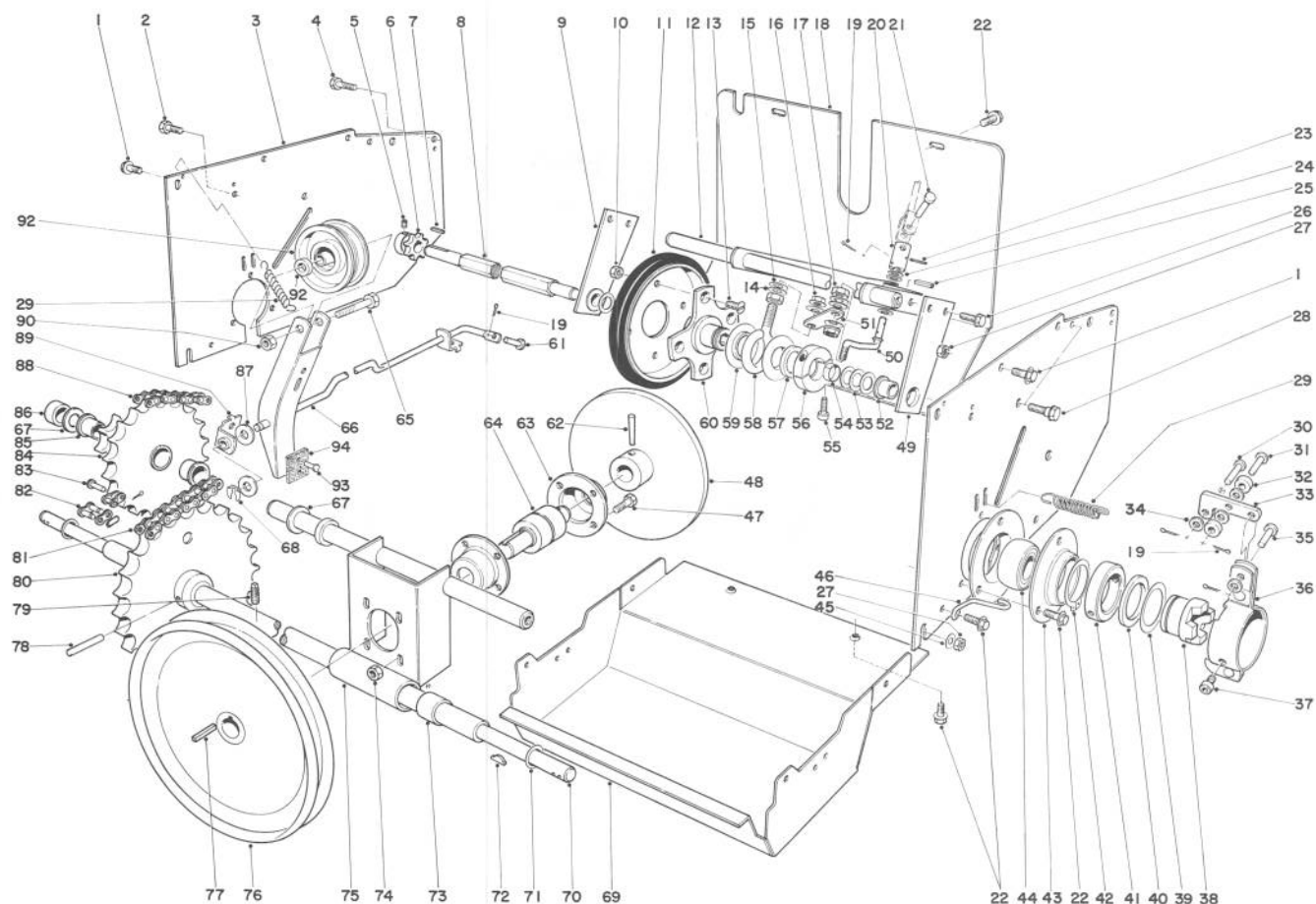
\*\*Not Illustrated



## TRACTION ASSEMBLY

Ref. No.	Part No.	Description	No. Used
1	3234-1	Hex Flange Screw	9
2	32104-98	Self-Tapping Screw	1
3	20-2320	Drive Side Plate	2
4	32104-6	Self-Tapping Screw	1
5	3245-32	Set Screw	2
6	5-9820	Sprocket	1
7	3-6168	Square Key	1
8	11-8940	Friction Wheel Shaft	1
9	11-8040	Hex Shaft Mount R.H. (Incl. Ref. 52)	1
10	32146-5	Locknut	4
11	3-5461	Disc Assembly	1
12	11-8010	Dead Shaft Bracket	1
13	32108-94	Flat Hd. Screw	4
14	3290-301	Spring Washer	4
15	3256-45	Washer	2
16	32128-12	Flange Nut	2
17	32146-6	Locknut	2
18	8-7950	Rear Shield	1
19	3272-5	Cotter Pin	3
20	11-8070	Tube — U Joint	1
21	283-31	Clevis Pin	1
22	32144-10	Self-Tapping Screw	14
23	32121-50	Roll Pin	2
24	3-6712	Spacer	3
25	32121-11	Roll Pin	2

Ref. No.	Part No.	Description	No. Used
26	32144-11	Self-Tapping Screw	4
27	32146-2	Locknut	9
28	11-8140	Shoulder Screw	4
29	10-3890	Extension Spring	3
30	283-29	Clevis Pin	2
31	283-17	Clevis Pin	2
32	10-3910	Clutch Roller	4
33	20-1050	Clutch Cam Arm	2
34	3256-21	Washer	10
35	283-16	Clevis Pin	2
36	20-2290	Clutch Mount Bracket	2
37	3274-42	Hex Socket Capscrew	4
38	20-2870	Wheel Clutch	2
39	10-3980	Thrust Washer	2
40	256-214	Thrust Bearing	2
41	10-3860	Clutch Mount Collar	2
42	32151-35	Retaining Ring	2
43	20-1020	Bearing Flange	4
44	20-1010	Bearing	2
45	3256-25	Washer	2
46	11-0610	Clutch Retainer	2
47	322-3	Capscrew	4
48	11-7940	Friction Plate	1
49	11-8030	Hex Shaft Mount L.H. (Incl. Ref. 52)	1
50**	11-8090	Connecting Rod	1

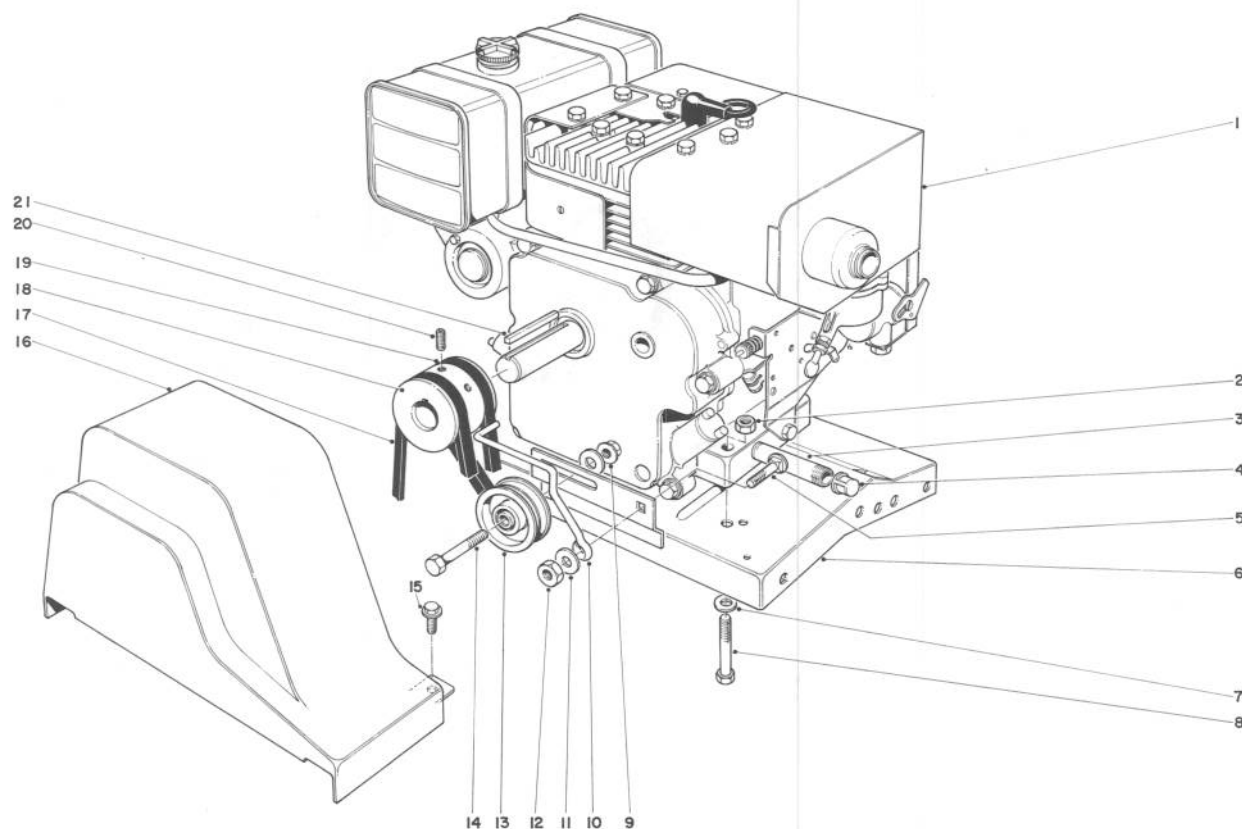


## TRACTION ASSEMBLY (Continued)

Ref. No.	Part No.	Description	No. Used
51	11-8060	Shift Rod Pivot	1
52	256-219	Bushing	2
53	5-7570	Washer	4
54	11-3180	Split Spacer	1
55	3274-26	Hex Socket Capscrew	2
56	20-4610	Collar	1
57	252-71	Thrust Bearing	1
58	11-8050	Slider Ring Collar	1
59	11-8080	Slider Ring	2
60	20-3310	Hub	1
61	283-1	Clevis Pin	1
62	3285-11	Groove Pin	1
63	10-0070	Bearing Housing	2
64	8-8680	Friction Plate Shaft	1
65	323-8	Capscrew	1
66	5-9979	Auger Idler & Brake Ass'y (Incl. Ref. 93 - 94)	1
67	3-6498	Thrust Washer	2
68	32151-43	Klip-Ring	1
69	11-7140	Lower Shield	1
70	8-8760	Axle Shaft	1
71	3-0737	Thrust Washer	2
72	3257-19	Hi-Pro Key	2
73	256-232	Bushing	2
74	32149-1	Locknut	4

Ref. No.	Part No.	Description	No. Used
75	5-8299	Bulkhead (Incl. Ref. 73)	1
76	5-7410	Drive Pulley	1
77	3-6168	Key	1
78	3285-11	Groove Pin	1
79	3242-4	Set Screw	2
80	8-8770	Sprocket	1
81	8-8810	Lower Chain	1
82	2710-6	Connecting Link	2
83	2710-10	Half Link	2
84	5-7070	Sprocket (Incl. Ref. 85)	1
85	256-215	Bushing	2
86	20-4580	Idler Spacer	1
87	3256-5	Washer	2
88	5-9430	Drive Chain	1
89	20-2940	Clutch Rod Bracket	1
90	32146-2	Locknut	1
91	20-0010	Spacer	1
92	3-4244	Idler Pulley	1
93	3295-23	Rivet	2
94	20-3100	Brake Pad	1
*	5-9959	Loose Parts Assembly	1
*	59051	Grader Blade Optional	1
*	12-8100	Snow Cab Optional	1
*	12-9900	Sweeper Optional	1

\*Not Illustrated



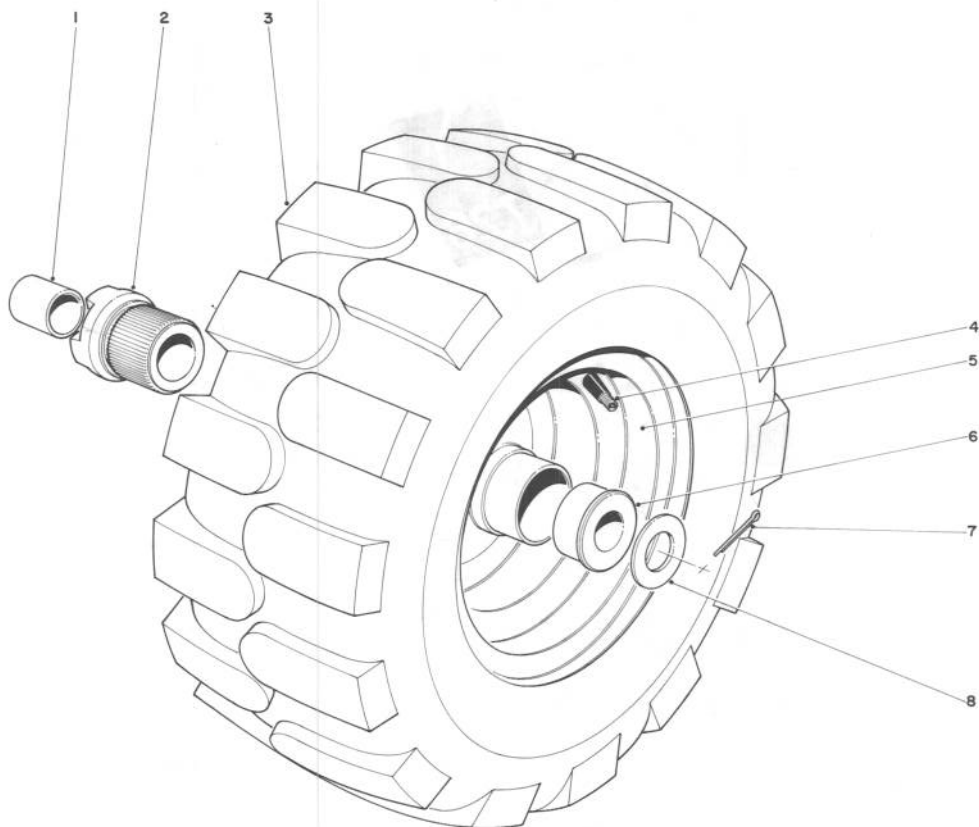
## ENGINE ASSEMBLY

Ref. No.	Part No.	Description	No. Used
1	221-435	Engine	1
*	221-444	Engine	1
2	32152-1	Locknut	4
3	289-20	Pipe Nipple	1
4	288-4	Pipe Cap	1
5	3231-27	Carriage Bolt	1
6	17-6950	Engine Base	1
7	3256-23	Washer	4
8	322-9	Capscrew	4
9	3290-357	Locknut	1
10	8-8830	Belt Guide	1
11	3256-25	Washer	2

Ref. No.	Part No.	Description	No. Used
12	32146-2	Locknut	1
13	3-4244	Idler Pulley	1
14	323-8	Capscrew	1
15	32144-10	Self-Tapping Screw	2
16	17-6550	Belt Guard	1
17	17-0850	V-Belt	1
18	11-9110	Engine Pulley	1
19	17-6540	V-Belt	1
20	3246-14	Set Screw	2
21	5-0930	Key	1
*	20-7200	Starter Kit U.S.A. Optional	1
*	10-4280	Starter Kit Canada Optional	1

\*Optional



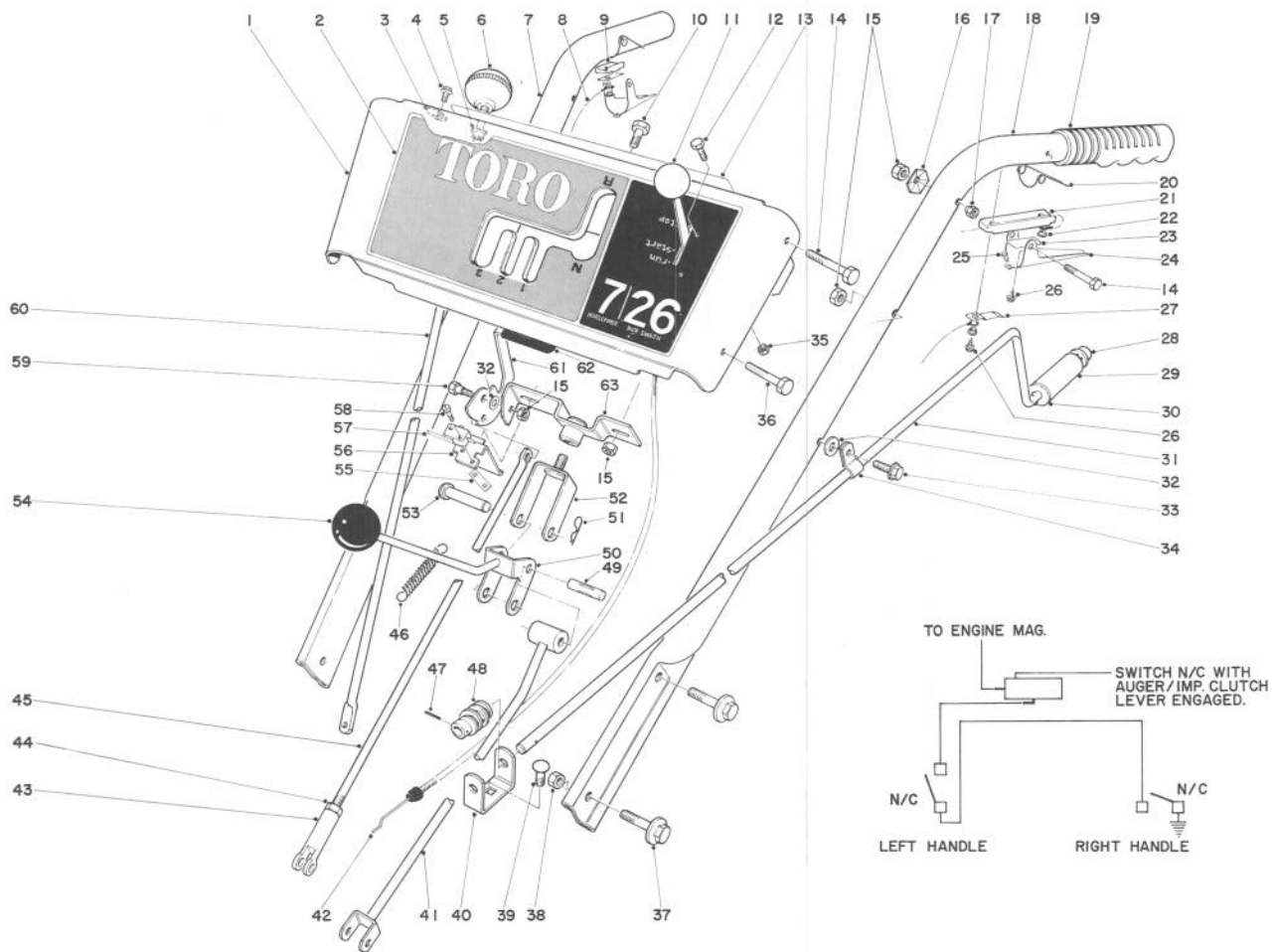


## WHEEL ASSEMBLY

Ref. No.	Part No.	Description	No. Used
1	256-205	Bushing	2
2	12-1130	Jaw Hub	2
3	231-78	Tire	2
4	232-27	Valve Stem	2
5	17-6610	Rim	2

Ref. No.	Part No.	Description	No. Used
6	256-212	Bushing	2
7	3272-17	Cotter Pin	2
8	3-8664	Thrust Washer	2
*	17-7620	Tire Chains Optional <i>DISC</i>	1
<i>20-9800 Chain will fit the above tire</i>			

\*Not Illustrated

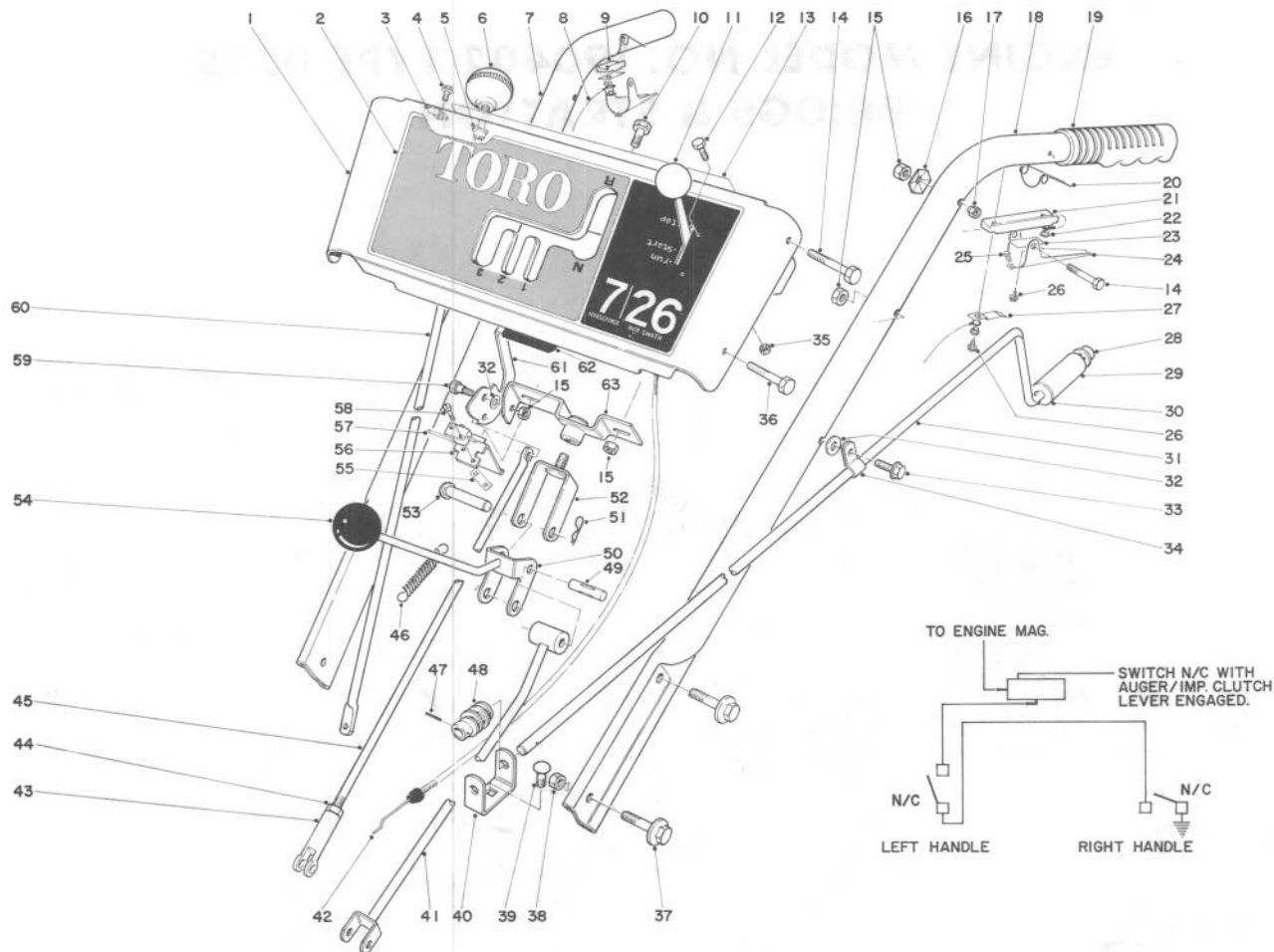


## HANDLE ASSEMBLY

Ref. No.	Part No.	Description	No. Used
1	5-9939	Escutcheon Plate (Incl. Ref. 2 & 13)	1
2	17-6650	Escutcheon Decal	1
3	20-2810	Plastic Clip	2
4	32104-76	Self-Tapping Screw	2
5	256-240	Bushing	2
6	233-10	Knob	2
7	20-1040	Handle (Right)	1
8	20-2120	Wiring Harness	1
9	17-5680	Insulator — Safety Interlock	1
10	321-3	Capscrew	2
11	233-25	Knob	1
12	3290-134	Machine Screw	2
13	11-8390	Decal	1
14	321-11	Capscrew	4
15	32152-4	Locknut	6
16	3290-257	Pyramidal Washer	2
17	32111-7	Acorn Nut	2
18	20-1030	Handle (Left)	1
19	6-0450	Handle Grip	2
20	17-5720	Spring	2
21	20-2110	Insulator	1
22	17-5700	Washer — Insulator	3
23	17-5690	Contact — Safety Interlock	2

Ref. No.	Part No.	Description	No. Used
24	17-5710	Lever — Safety Interlock	2
25	3290-358	Plastic Rivet	1
26	32104-75	Self-Tapping Screw	3
27	17-6510	Contact Bracket	1
28	3290-320	Speed Nut — Push On	1
29	20-2060	Grip	1
30	3256-24	Washer	1
31	8-8570	Rod	1
32	3256-23	Washer	2
33	32144-11	Self-Tapping Screw	1
34	2412-10	Clip	1
35	32146-18	Locknut	2
36	321-9	Capscrew	2
37	3234-1	Flange Screw	2
38	32146-2	Locknut	4
39	3230-15	Carriage Bolt	1
40	11-7110	Worm Bracket	1
41	11-8100	Trunnion	1
42	8-7790	Throttle Control	1
43	5-0865	Clevis	1
44	3220-3	Jam Nut	1
45	20-2310	Drag Link	1
46	8-9900	Spring, Control Rod	1



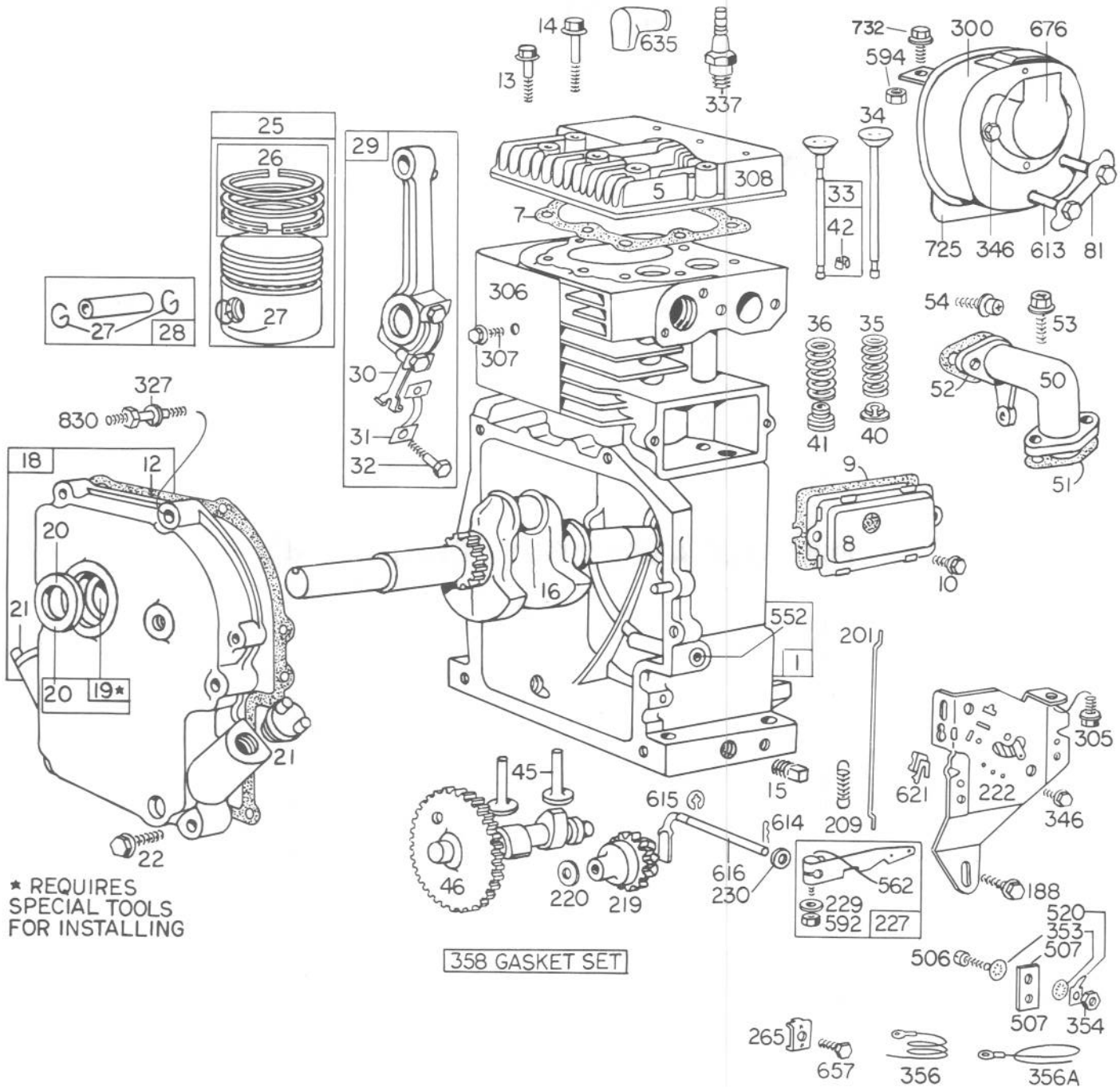


## HANDLE ASSEMBLY (Continued)

Ref. No.	Part No.	Description	No. Used
47	32121-50	Roll Pin	1
48	8-8600	Worm Gear	1
49	3284-2	Roll Pin	1
50	20-3050	Shift Rod	1
51	3290-322	Hair Pin Cotter	1
52	8-7910	Pivot Bracket	1
53	283-5	Clevis Pin	1
54	233-21	Knob	1
55	3290-354	Speed Nut	1

Ref. No.	Part No.	Description	No. Used
56	20-2100	Switch Bracket	1
57	12-3320	Micro Switch	1
58	3290-93	Machine Screw	2
59	11-9030	Shoulder Bolt	2
60	20-2330	Wheel Clutch Rod	2
61	17-6620	Auger Clutch Handle	1
62	11-8970	Grip	1
63	8-7930	Swivel Block	1

# ENGINE MODEL NO. 190402 TYPE 0755 BRIGGS & STRATTON



# ENGINE MODEL NO. 190402 TYPE 0755

## BRIGGS & STRATTON

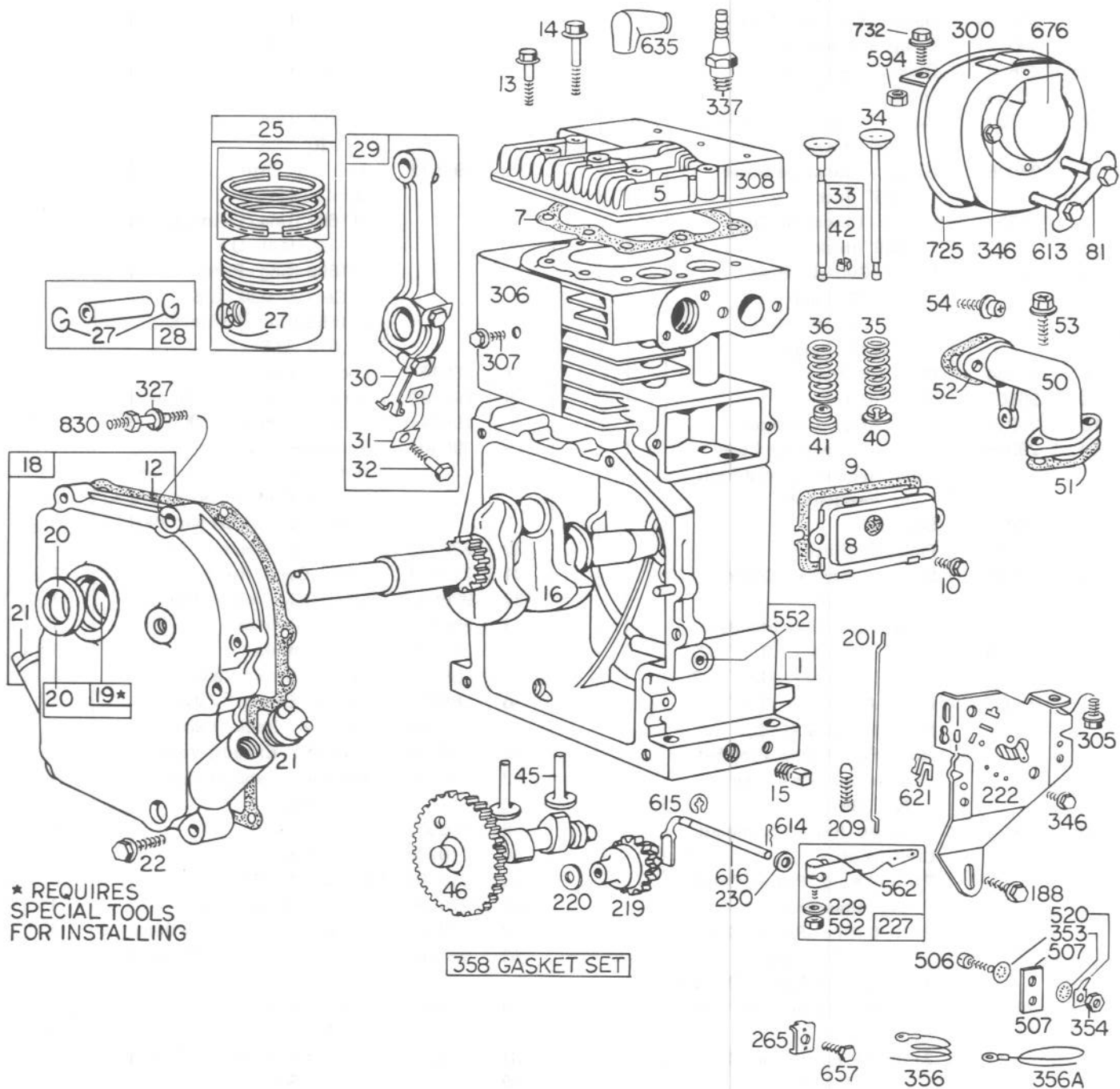
Ref. No.	Part No.	Description	No. Used
1	390399	Cylinder Assembly	1
5	211778	Head - Cylinder	1
7	*270430	Gasket - Cylinder Head	1
8	390321	Breather Assembly	1
9	*27803	Gasket - Valve Cover	1
10	93536	Screw - Sem	1
12	*27750	Gasket - Crankcase Cover - 1/64" thick	1
	*27876	Gasket - Crankcase Cover - .005" thick	1
	*27877	Gasket - Crankcase Cover - .009" thick	1
13	93210	Screw - Cylinder Head (2-9/32" long)	1
14	93211	Screw - Cylinder Head (2-9/16" long)	1
15	91084	Plug - Oil Drain	1
16	261077	Crankshaft	1
18	299167	Cover Assy. - Crankcase	1
19	295964	Bushing - Crankcase Cover Note: Requires special tools for installation.	1
20	298423	Seal - Oil	1
21	66768	Plug - Oil Filler	1
22	93585	Screw - Crankcase Cover Mounting Sem	1
25	390347	Piston Assembly - Standard	1
	390348	Piston Assembly - .010" O.S.	1
	390349	Piston Assembly - .020" O.S.	1
	390350	Piston Assembly - .030" O.S.	1
		<b>PISTON RING SETS;</b> Note: For Chrome Ring Set - Standard Size - order No. 299743.	
26	299569	Ring Set - Piston - Standard Consists of: 211637 Ring - Piston, Comp., Top, Standard 211636 Ring - Piston, Comp., Center, Standard 211635 Ring - Piston, Oil, Std.	1
	299570	Ring Set - Piston - .010" O.S. Consists of: 211649 Ring - Piston, Comp., Top, .010" O.S. 211650 Ring - Piston, Comp., Center, .010" O.S. 211651 Ring - Piston, Oil, .010" O.S.	1

Ref. No.	Part No.	Description	No. Used
	299571	Ring Set - Piston - .010" O.S. Consists of: 211653 Ring - Piston, Comp., Top, .020" O.S. 211654 Ring - Piston, Comp., Center, .020" O.S. 211655 Ring - Piston, Oil, .020" O.S.	1
	299572	Ring Set - Piston - .030" O.S. Consists of: 211657 Ring - Piston, Comp., Top, .030" O.S. 211658 Ring - Piston, Comp., Center, .030" O.S. 211659 Ring - Piston, Oil, .030" O.S.	1
27	68546	Lock - Piston Pin	1
28	295840	Pin Assy. - Piston - Standard	1
	295841	Pin Assy. - Piston - .005" O.S.	1
29	390401	Rod Assembly - Connecting Note: For Connecting Rod with .020" undersize Crank- pin Bore - Order No. 390773.	1
30	222113	Dipper - Connecting Rod	1
31	222114	Lock - Conn. Rod Screw	1
32	92659	Screw - Connecting Rod	1
33	390419	Valve - Exhaust	1
34	261055	Valve - Intake	1
35	65906	Spring - Intake Valve	1
36	26828	Spring - Exhaust Valve	1
40	221596	Retainer - Intake Valve	1
41	292260	Rotocoil - Exhaust Valve	1
42	93630	Retainer - Exhaust Valve Rotocoil	2
45	260933	Tappet - Valve	1
46	210728	Gear - Cam	1
50	210705	Elbow - Intake	1
51	*270684	Gasket - Intake Elbow	1
52	*27828	Gasket - Intake Elbow Mtg.	1
53	93128	Screw - Carburetor Mounting Sem	1
54	93208	Screw - Intake Elbow Mounting Sem	1
81	222263	Lock Muffler Mounting Screw	1
188	93535	Screw - Sem	1
201	260872	Link - Governor	1
209	260695	Spring - Governor	1
219	297656	Gear - Governor	1
220	221551	Washer - Thrust	1

\*Included in Gasket Set - Part No. 299577.

# ENGINE MODEL NO. 190402 TYPE 0755

## BRIGGS & STRATTON (Continued)

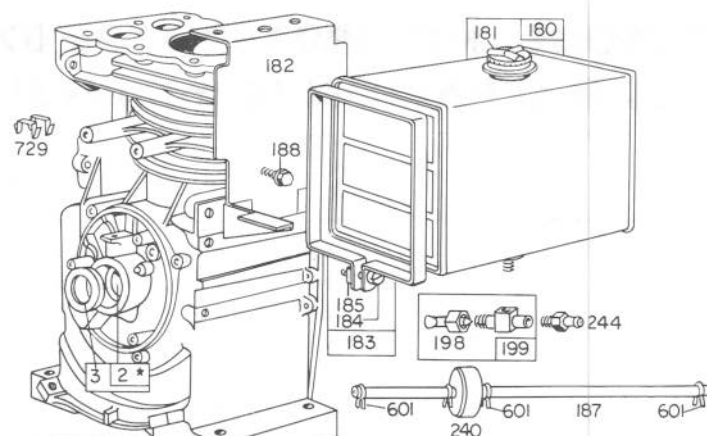


# ENGINE MODEL NO. 190402 TYPE 0755

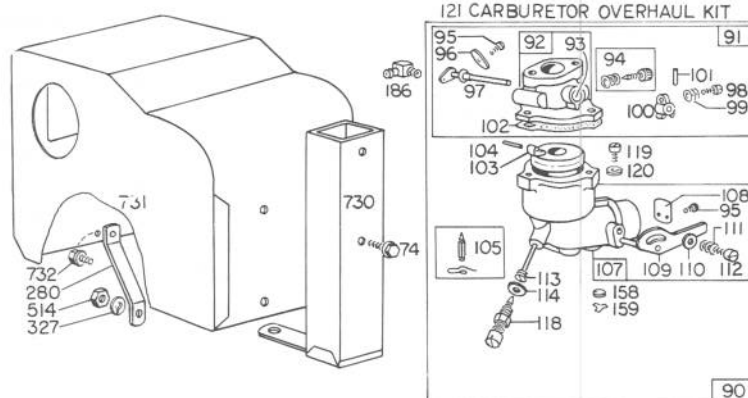
## BRIGGS & STRATTON (Continued)

Ref. No.	Part No.	Description	No. Used
222	390670	Plate - Governor Control	1
227	299165	Lever Assy. - Governor	1
229	220680	Washer	1
230	221559	Washer - Spacer	1
265	221535	Clamp - Casing	1
300	390918	Muffler - Exhaust	1
305	93158	Screw - Sem	1
306	221898	Shield - Cylinder	1
307	93163	Screw - Cylinder Shield Mtg. Sem	1
308	221901	Cover - Cylinder Head	1
327	91388	Washer - Lock	1
337	298809	Plug - Spark Note: Spark Plugs 298809, use Ignition Cable Terminal No. 221798.	1
346	93014	Screw - Sem	1
353	92791	Washer - Lock - Shakeproof	3
354	90576	Nut - Hex.	2
356	299500	Wire - Ground	1

Ref. No.	Part No.	Description	No. Used
356A	391255	Wire - Ground	1
358	299577	Gasket Set	1
506	90200	Screw - Machine, Fil. Hd.	1
507	66895	Insulator	1
520	93722	Terminal - Spade	1
552	230843	Bushing - Governor Shaft	1
562	92613	Bolt - Governor Lever	1
592	90356	Nut - Hex.	1
594	93203	Nut - Hex.	1
613	93704	Screw Muffler Mounting	1
614	93306	Cotter - Hair Pin	1
615	93307	Retainer - E-Ring	1
616	230842	Crank - Governor	1
621	297472	Switch - Stop	1
635	66538	Elbow - Spark Plug	1
657	93496	Screw - Sem	1
676	22226	Deflector - Exhaust	1
725	221885	Shield - Heat	1
732	93490	Screw Sem	1
830	93730	Stud-Strap to Crankcase Cover	1



★ REQUIRES  
SPECIAL TOOLS  
FOR INSTALLING



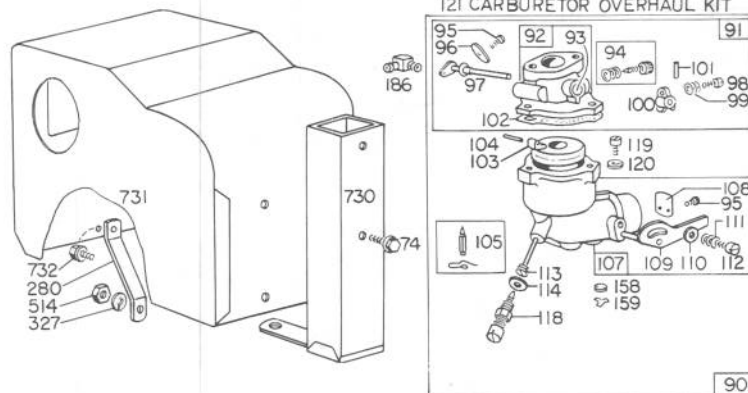
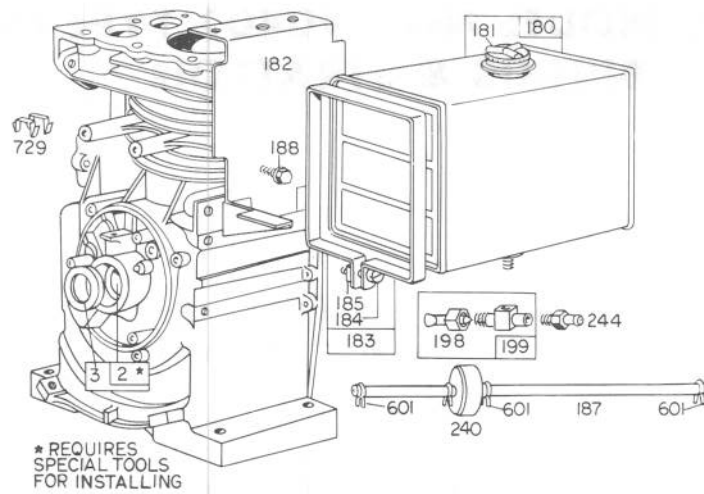
## CARBURETOR ASSEMBLY

Ref. No.	Part No.	Description	No. Used
2	295962	Bushing - Cylinder Note: Requires special tools for installation.	1
3	294606	Seal - Oil	1
74	93042	Screw - Sem	1
90	390323	Carburetor Assembly	1
91	390404	Body Assembly - Upper Carburetor	1
92	390503	Body - Upper Carburetor	1
93	23108	Bushing - Throttle Shaft	1
94	†292681	Valve Assembly - Carburetor Idle	1
95	93038	Screw - Throttle and Choke Valve Mtg. Sem	1
96	62940	Valve - Throttle	1
97	298826	Shaft and Lever - Throttle	1
98	91920	Screw - Machine, Fil. Hd.	1
99	26157	Spring - Throttle Adjustment	1
100	61967	Stop - Throttle	1
101	93043	Pin - Throttle Stop	1
102	†27918	Gasket - Carburetor Body	1
103	99333	Float - Carburetor	1
104	†230896	Pin - Float Hinge	1

Ref. No.	Part No.	Description	No. Used
105	299096	Valve - Fuel Inlet	1
107	390403	Body Assembly - Lower Carburetor	1
108	62872	Valve - Choke	1
109	298875	Shaft and Lever - Choke	1
110	62899	Washer - Choke Lever	1
111	26155	Spring - Choke Lever	1
112	23123	Screw - Choke Lever	1
113	†390395	Nozzle - Carburetor	1
114	†68667	Gasket - Nozzle	1
118	99525	Valve - Needle	1
119	90746	Screw - Machine, Fil. Hd.	1
120	92290	Washer - Lock	1
121	295938	Carburetor Overhaul Kit	1
158	27590	Filter - Carburetor Drain	1
159	220521	Retainer - Carburetor Drain Filter	1
180	290816	Tank Assy. - Fuel	1
181	297866	Cap - Fuel Tank	1
182	221935	Bracket - Fuel Tank	1
183	291367	Strap Assy. - Fuel Tank	1
184	91257	Screw - Machine, Fil. Hd.	1
185	90970	Nut - Square	1

† Included in Carburetor Overhaul Kit - Part No. 295938



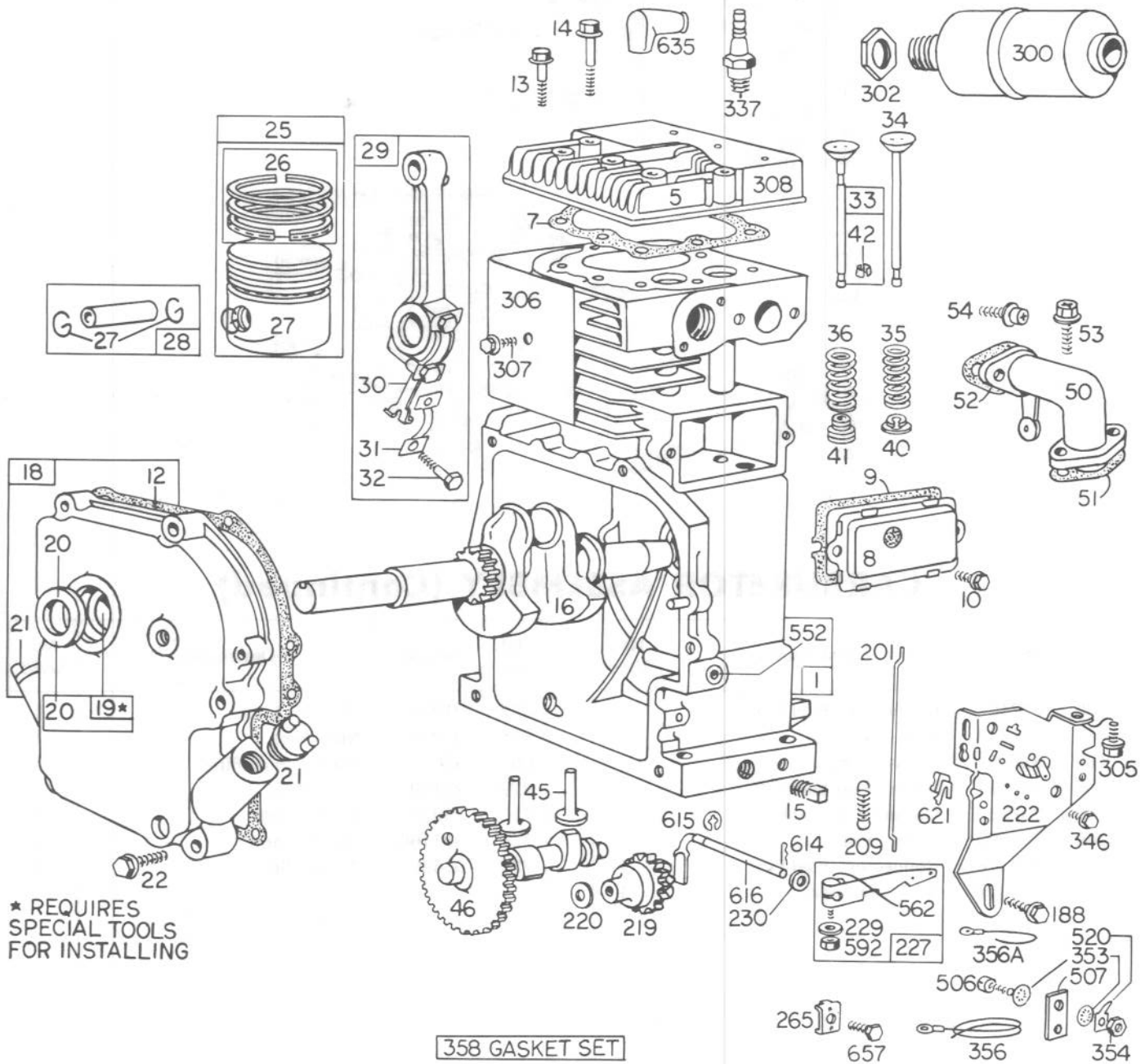


## CARBURETOR ASSEMBLY (Continued)

Ref. No.	Part No.	Description	No. Used
186	67218	Connector - Fuel Pipe	1
187	299942	Pipe - Fuel	1
188	93535	Screw - Sem	1
198	293934	Valve - Fuel Shut-Off	1
199	297563	Outlet - Fuel Tank	1
240	298090	Filter - Fuel	1
244	230318	Connector - Fuel Pipe	1
280	222372	Strap - Support	1

Ref. No.	Part No.	Description	No. Used
327	91388	Washer - Lock	1
514	93203	Nut - Hex.	1
601	93053	Clamp - Fuel Pipe	1
729	221907	Clip - Wire	1
730	299384	Stack - Carb.	1
731	391166	Hood - Snow	1
732	93490	Screw - Sem	1

# ENGINE MODEL NO. 190402 TYPE 0754 BRIGGS & STRATTON



# ENGINE MODEL NO. 190402 TYPE 0754

## BRIGGS & STRATTON

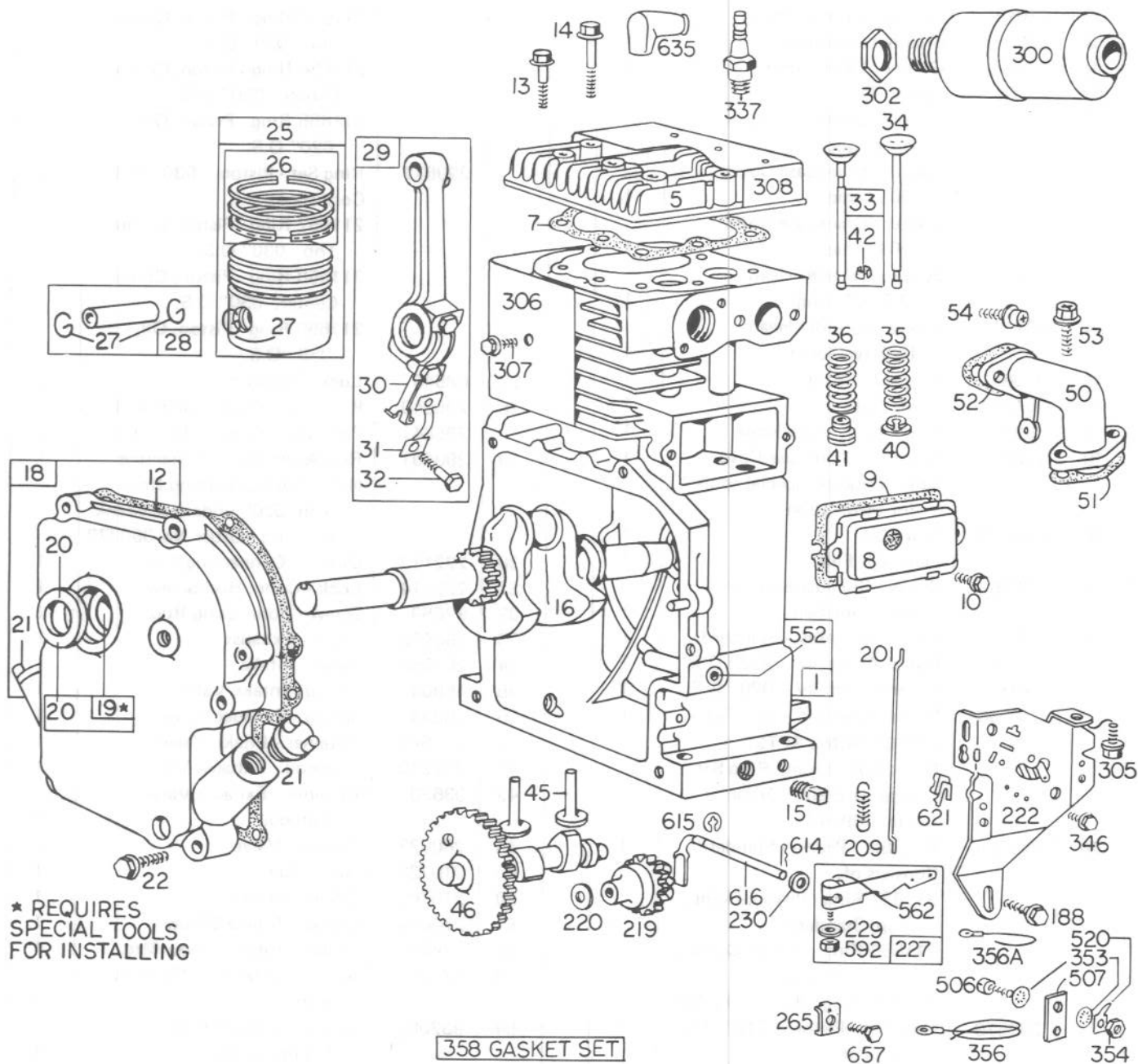
Ref. No.	Part No.	Description	No. Used
1	390399	Cylinder Assembly	1
5	211778	Head - Cylinder	1
7	*270430	Gasket - Cylinder Head	1
8	390321	Breather Assembly	1
9	*27803	Gasket - Valve Cover	1
10	93536	Screw - Sem	1
12	*27750	Gasket - Crankcase Cover - 1/64" thick	1
	*27876	Gasket - Crankcase Cover - .005" thick	1
	*27877	Gasket - Crankcase Cover - .009" thick	1
13	93210	Screw - Cylinder Head (2-9/32" long)	1
14	93211	Screw - Cylinder Head (2-9/16" long)	1
15	91084	Plug - Oil Drain	1
16	261077	Crankshaft	1
18	299167	Cover Assy. - Crankcase	1
19	295964	Bushing - Crankcase Cover Note: Requires special tools for installation.	1
20	298423	Seal - Oil	1
21	66768	Plug - Oil Filler	1
22	93585	Screw - Crankcase Cover Mounting Sem	1
25	390347	Piston Assembly - Standard	1
	390348	Piston Assembly - .010" O.S.	1
	390349	Piston Assembly - .020" O.S.	1
	390350	Piston Assembly - .030" O.S.	1
		<b>PISTON RING SETS:</b> Note: For Chrome Ring Set - Standard Size - order No. 299743.	
26	299569	Ring Set - Piston - Standard Consists of: 211637 Ring - Piston, Comp., Top, Standard 211636 Ring - Piston, Comp., Center, Standard 211635 Ring - Piston, Oil, Std.	1
	299570	Ring Set - Piston - .010" O.S. Consists of: 211649 Ring - Piston, Comp., Top, .010" O.S. 211650 Ring - Piston, Comp., Center, .010" O.S. 211651 Ring - Piston, Oil, .010" O.S.	1

Ref. No.	Part No.	Description	No. Used
	299571	Ring Set - Piston - .020" O.S. Consists of: 211653 Ring - Piston, Comp., Top, .020" O.S. 211654 Ring - Piston, Comp., Center, .020" O.S. 211655 Ring - Piston, Oil, .020" O.S.	1
	299572	Ring Set - Piston - .030" O.S. Consists of: 211657 Ring - Piston, Comp., Top, .030" O.S. 211658 Ring - Piston, Comp., Center, .030" O.S. 211659 Ring - Piston, Oil, .030" O.S.	1
27	68546	Lock - Piston Pin	1
28	295840	Pin Assy. - Piston - Standard	1
	295841	Pin Assy. - Piston - .005" O.S.	1
29	390401	Rod Assembly - Connecting Note: For Connecting Rod with .020" undersize Crank-pin Bore - Order No. 390773.	1
30	222113	Dipper - Connecting Rod	1
31	222114	Lock - Conn. Rod Screw	1
32	92659	Screw - Connecting Rod	1
33	390419	Valve - Exhaust	1
34	261055	Valve - Intake	1
35	65906	Spring - Intake Valve	1
36	26828	Spring - Exhaust Valve	1
40	221596	Retainer - Intake Valve	1
41	292260	Rotocoil - Exhaust Valve	1
42	93630	Retainer - Exhaust Valve Rotocoil	2
45	260933	Tappet - Valve	1
46	210728	Gear - Cam	1
50	210705	Elbow - Intake	1
51	*270684	Gasket - Intake Elbow	1
52	*27828	Gasket - Intake Elbow Mtg.	1
53	93128	Screw - Carburetor Mounting Sem	1
54	93208	Screw - Intake Elbow Mounting Sem	1
188	93535	Screw - Sem	1
201	260872	Link - Governor	1
209	260695	Spring - Governor	1
219	297656	Gear - Governor	1
220	221551	Washer - Thrust	1
222	390670	Plate - Governor Control	1

\*Included in Gasket Set - Part No. 299577.

# ENGINE MODEL NO. 190402 TYPE 0754

## BRIGGS & STRATTON (Continued)

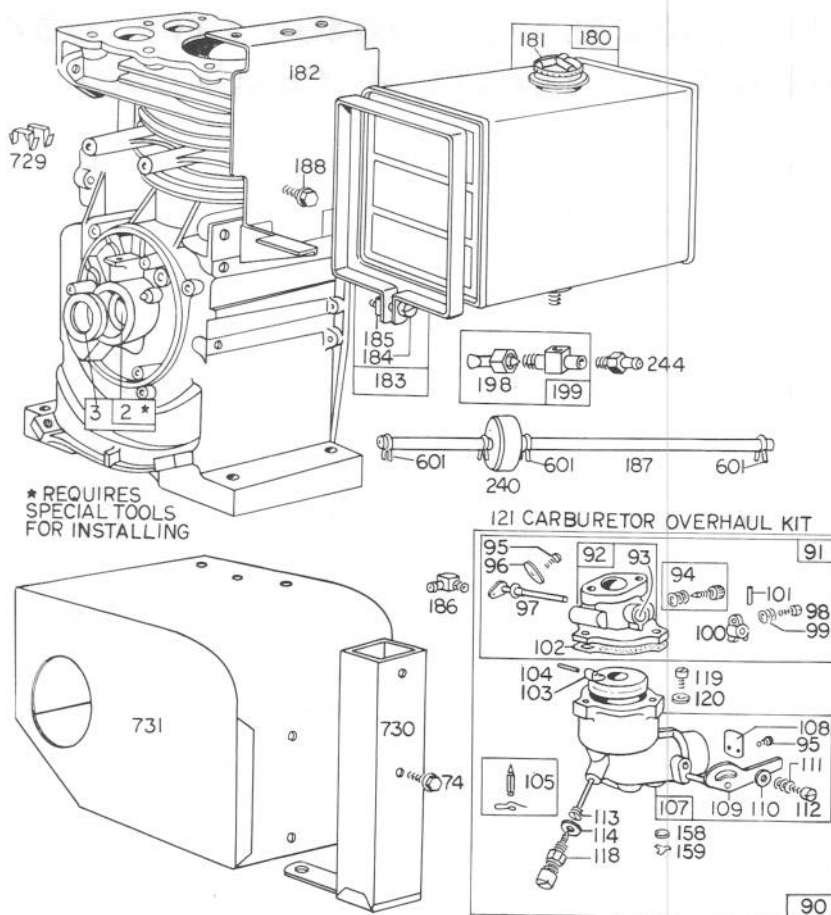


# ENGINE MODEL NO. 190402 TYPE 0754

## BRIGGS & STRATTON (Continued)

Ref. No.	Part No.	Description	No. Used
227	299165	Lever Assembly - Governor	1
229	220680	Washer	1
230	221559	Washer - Spacer	1
265	221535	Clamp - Casing	1
300	390249	Muffler - Exhaust	1
302	91242	Locknut - Muffler	1
305	93158	Screw - Sem	1
306	221898	Shield - Cylinder	1
307	93163	Screw - Cylinder Shield	1
		Mounting Sem	1
308	221901	Cover - Cylinder Head	1
337	298809	Plug - Spark	1
		Note: Spark Plugs 298809, use Ignition Cable Terminal No. 221798.	
346	93014	Screw - Sem	1
353	92791	Washer - Lock - Shakeproof	3

Ref. No.	Part No.	Description	No. Used
354	90576	Nut - Hex.	1
356	299500	Wire - Ground	1
356A	391255	Wire - Ground	1
358	299577	Gasket Set	1
506	90200	Screw - Machine, Fil. Hd.	1
507	66895	Insulator	1
520	93722	Terminal - Spade	1
552	230843	Bushing - Governor Shaft	1
562	92613	Bolt - Governor Lever	1
592	90356	Nut - Hex.	1
614	93306	Cotter - Hair Pin	1
615	93307	Retainer - E-Ring	1
616	230842	Crank - Governor	1
621	297472	Switch - Stop	1
635	66538	Elbow - Spark Plug	1
657	93496	Screw - Sem	1



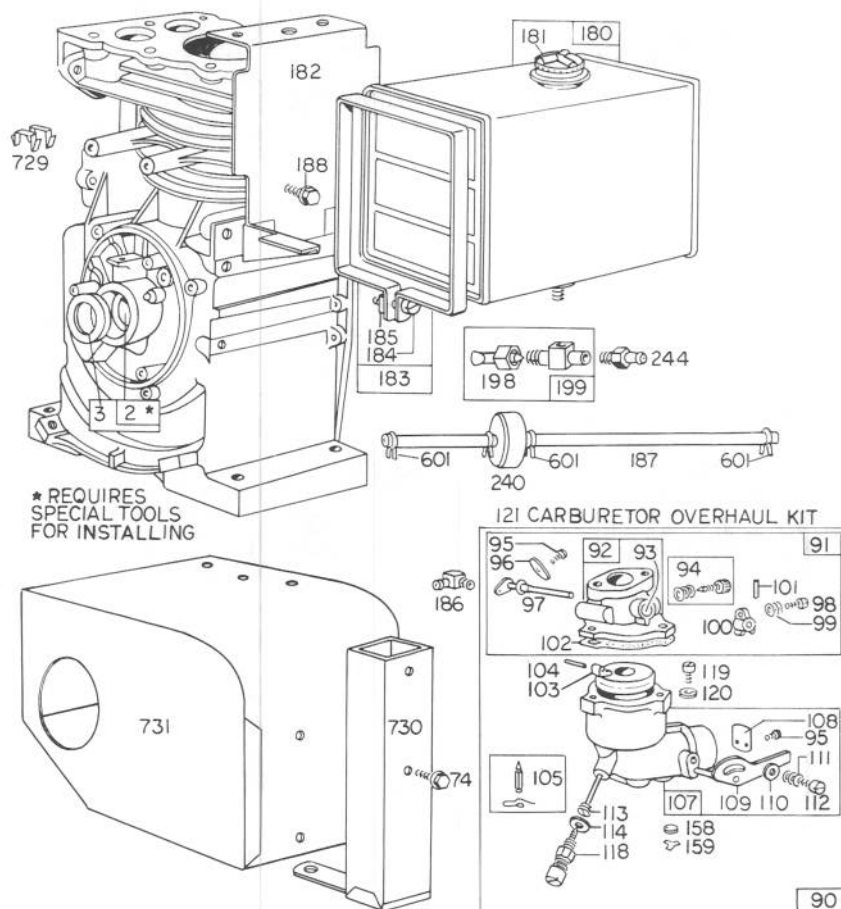
## CARBURETOR ASSEMBLY

Ref. No.	Part No.	Description	No. Used
2	295962	Bushing - Cylinder Note: Requires special tools for installation.	1
3	294606	Seal - Oil	1
90	390323	Carburetor Assembly	1
91	390404	Body Assembly - Upper Carburetor	1
92	390503	Body - Upper Carburetor	1
93	23108	Bushing - Throttle Shaft	1
94	†292681	Valve Assembly - Carburetor Idle	1
95	93038	Screw - Throttle and Choke Valve Mtg. Sem	1
96	62940	Valve - Throttle	1
97	298826	Shaft and Lever - Throttle	1
98	91920	Screw - Machine, Fil. Hd. Note: 90200 Screw - Machine, Fil. Hd. Used for Ground Wire Terminal on type Nos. 0674, 0682.	1
99	26157	Spring - Throttle Adjustment	1
100	61967	Stop - Throttle	1
101	93043	Pin - Throttle Stop	1

Ref. No.	Part No.	Description	No. Used
102	†27918	Gasket - Carburetor Body	1
103	99333	Float - Carburetor	1
104	†230896	Pin - Float Hinge	1
105	299096	Valve - Fuel Inlet	1
107	390403	Body Assembly - Lower Carburetor	1
108	62872	Valve - Choke	1
109	298875	Shaft and Lever - Choke	1
110	62899	Washer - Choke Lever	1
111	26155	Spring - Choke Lever	1
112	23123	Screw - Choke Lever	1
113	†390395	Nozzle - Carburetor	1
114	†68667	Gasket - Nozzle	1
118	†99525	Valve - Needle	1
119	90746	Screw - Machine, Fil. Hd.	1
120	92290	Washer - Lock	1
121	295938	Carburetor Overhaul Kit	1
158	27590	Filter - Carburetor Drain	1
159	220521	Retainer - Carburetor Drain Filter	1
180	290816	Tank Assy. - Fuel	1
181	297866	Cap - Fuel Tank	1
182	221935	Bracket - Fuel Tank	1

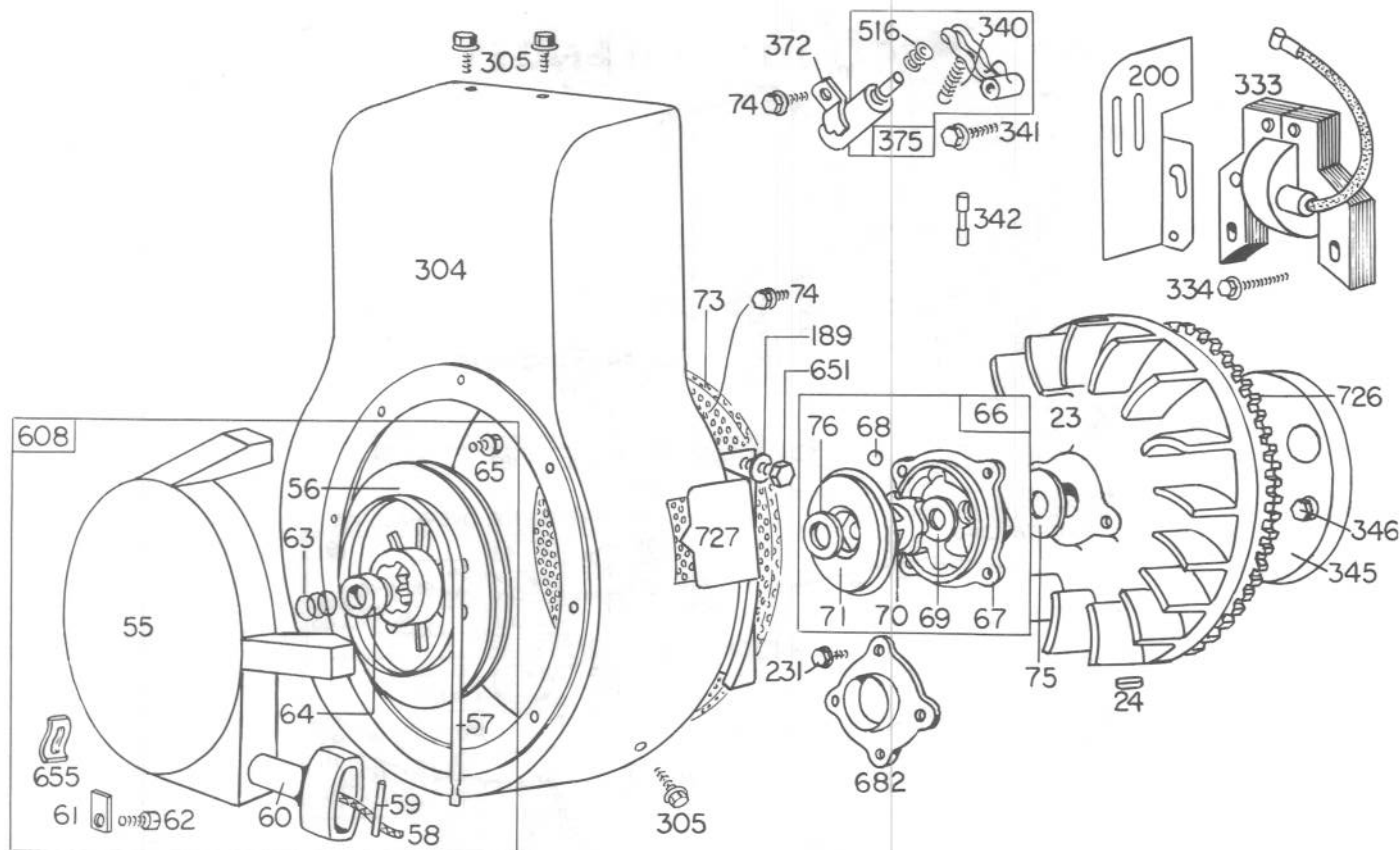
†Included in Carburetor Overhaul Kit - Part No. 295938.





## CARBURETOR ASSEMBLY (Continued)

Ref. No.	Part No.	Description	No. Used	Ref. No.	Part No.	Description	No. Used
183	291367	Strap Assy. - Fuel Tank	1	199	297563	Outlet - Fuel Tank	1
184	91257	Screw - Machine, Fil. Hd.	1	240	298080	Filter - Fuel	1
185	90970	Nut - Square	1	244	230318	Connector - Fuel Pipe	1
186	67218	Connector - Fuel Pipe	1	601	93053	Clamp - Fuel Pipe	1
187	299942	Pipe - Fuel	1	729	221907	Clip - Wire	1
188	93535	Screw - Sem	1	730	299384	Stack - Carb.	1
198	293934	Valve - Fuel Shut-Off	1	731	299391	Hood - Snow	1



## REWIND STARTER ASSEMBLY for Type 0754 and 0755

Ref. No.	Part No.	Description	No. Used
23	299375	Flywheel - Magneto	1
24	61760	Key - Flywheel	1
55	295272	Housing - Rewind Starter	1
56	295871	Pulley - Rewind Starter	1
57	294303	Spring - Rewind Starter	1
58	66564	Rope - Rewind Starter	1
59	230228	Pin - Starter Grip	1
60	66728	Grip - Starter Rope	1
61	68848	Bumper - Starter Pulley	1
62	93254	Screw - Pulley Bumper Mtg.	1
63	260414	Spring - Ratchet	1
64	230543	Adapter - Ratchet Spring	1
65	93067	Screw - Rewind Starter Housing Mounting Sem	1
66	298798	Clutch Assy. - Rewind Starter	1
67	211383	Housing - Rewind Starter Clutch	1
68	63770	Ball - Clutch	1
69	66718	Washer - Starter Clutch, Thrust	1
70	298799	Ratchet - Rewind Starter Clutch	1
71	221653	Washer - Retainer	1
73	221796	Screen - Rewind Starter	1
74	93042	Screw - Sem	1
75	220865	Washer - Spring	1
76	68238	Washer - Ratchet Sealing	1
189	90366	Washer - Lock	1
200	221760	Guide - Air	1

Ref. No.	Part No.	Description	No. Used
231	93064	Screw - Sem	1
304	390516	Housing - Blower	1
305	93158	Screw - Sem	1
333	298968	Armature Assembly	1
334	93381	Screw - Armature Mtg. Sem	1
340	26018	Spring - Breaker Arm	1
341	93381	Screw - Breaker Arm Mounting Sem	1
342	65704	Plunger - Breaker Point	1
345	222170	Cover - Breaker Point	1
346	93014	Screw - Sem	1
372	220477	Clamp - Condenser	1
375	294628	Breaker Points and Condenser Set	1
Note: 299061 Ignition Kit Includes: 294628 Point Set 65704 Plunger 61760 Key - Flywheel			
516	260374	Spring - Connector	1
608	295001	Starter Assy. - Rewind	1
651	92034	Screw	1
655	221014	Anchor - Spring	1
682	211516	Shield - Starter Clutch	1
726	299543	Gear, Flywheel Ring (Includes Mounting Parts)	1
727	221940	Guard - Ring Gear	1

## PRODUCT CHANGES

In an effort to make improvements available to TORO owners as quickly as possible, minor changes are incorporated into Toro's products from time to time that do not become immediately shown in the Parts Catalog. If such a change apparently has been made in your unit, which is not reflected in your manual, see your TORO distributor or his Authorized TORO Service Dealer for information and part numbers.

## IMPORTANT ORDERING INSTRUCTIONS

Repair parts are available from your Authorized TORO Service Dealer. To insure getting correct parts without delay, furnish the following information:

1. Serial number of your snowthrower as shown on the name plate.
2. Part number, description, and quantity of each part required.
3. State whether parts should be shipped by mail or express. All repair parts are shipped F.O.B. Factory.
4. Name and address where parts are to be shipped.
5. Do not order by reference number; use part number only.

## THE TORO PROMISE

It is Toro's policy to design and produce TORO products to provide our customers with a high level of performance and durability in normal operation. Our products, however, are produced in high volume, and it is inevitable that occasionally a unit will reach a customer with a defect in materials or workmanship which causes that unit to fall below the normal high

level of TORO performance. Invariably, such a defect will be noticed in a residential product within one year, and in an institutional product within ninety days after purchase. Recognizing this possibility, Toro has established a simple guarantee policy and procedure that is intended to assure customer satisfaction. This guarantee statement is as follows:

### The Toro Promise

*The Toro Company promises to repair any TORO product for the original purchaser if defective in materials or workmanship. The following time periods from the date of purchase apply:*

Residential products	1 year
Residential products used commercially	45 days
Institutional products	90 days

*The costs of parts and labor are included, but the customer pays the transportation costs. Just return any residential product to an Authorized TORO Service Dealer, or any institutional product to a TORO distributor.*

Should you feel that a product is defective, and wish to rely on The Toro Promise, the following procedure is recommended:

1. Contact any TORO dealer or distributor, but preferably the dealer or distributor from whom you purchased the product.
2. He will instruct you to either return the product to him, or tell you the name and address of your nearest Authorized TORO Service Dealer if the product is to be returned to such dealer.
3. Take the product and your original sales slip, or other evidence of purchase date, to the servicing dealer.

4. The servicing dealer will inspect the unit, advise you whether the product is defective and, if so, make all repairs necessary to correct the defect without extra charge to you.

If for any reason you are dissatisfied with the dealer's analysis of the defect or the service he performs, we urge you to contact us. Write:

TORO "Customer Care" Department  
8111 Lyndale Avenue South  
Bloomington, Minnesota 55420

## MAINTENANCE RECORD

[illegible]