



Parts Catalog

QuickGroom 710 Soft

Model No. 46405BA—Serial No. 321000001 and Up



Ordering Replacement Parts

To order replacement parts, please supply the part number, the quantity, and the description of each part desired.

Understanding Reference Numbers

Each identified part in an illustration has a reference number. The reference number for a part also appears in the parts list, along with other information about the part.

This catalog uses two special reference number formats, one to indicate parts in a service assembly and another to indicate the quantity of a given part in an illustration.

Service Assembly Reference Numbers

Parts in service assemblies have reference numbers in the form a:b. The a represents the reference number of the entire service assembly and the b represents a sequential number unique to each part within the service assembly.

For example, a wheel assembly might be identified by reference number 6, the tire by 6:1, the valve by 6:2, and the wheel by 6:3. When you order the assembly identified by reference number 6, you receive all parts identified by reference numbers 6:1, 6:2, and 6:3. However, you may also order any part individually. Reference numbers of this type appear in illustration and in parts lists.

Reference Numbers Indicating Quantity

In an illustration, if a reference number indicates more than one part, the reference number has the form nX y. The n represents the quantity of the part, the X is the multiplication symbol, and the y represents the reference number.

For example, in an illustration, the reference number 2X 37 means that two of the parts identified by reference number 37 are indicated.

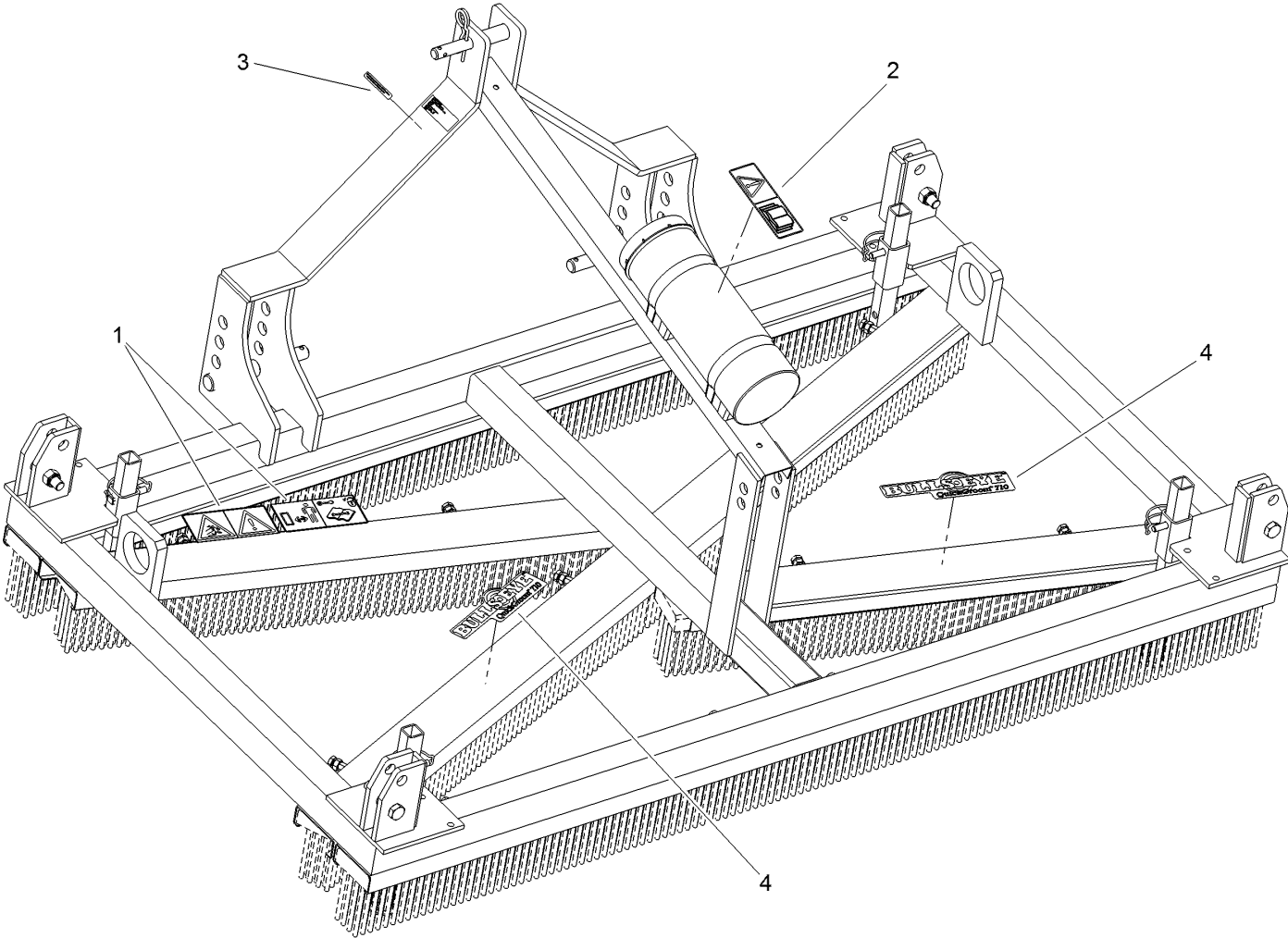
Contents

Frame Assembly..... 4

Brush Assembly 6

Attachments and Accessories 8

Frame Assembly

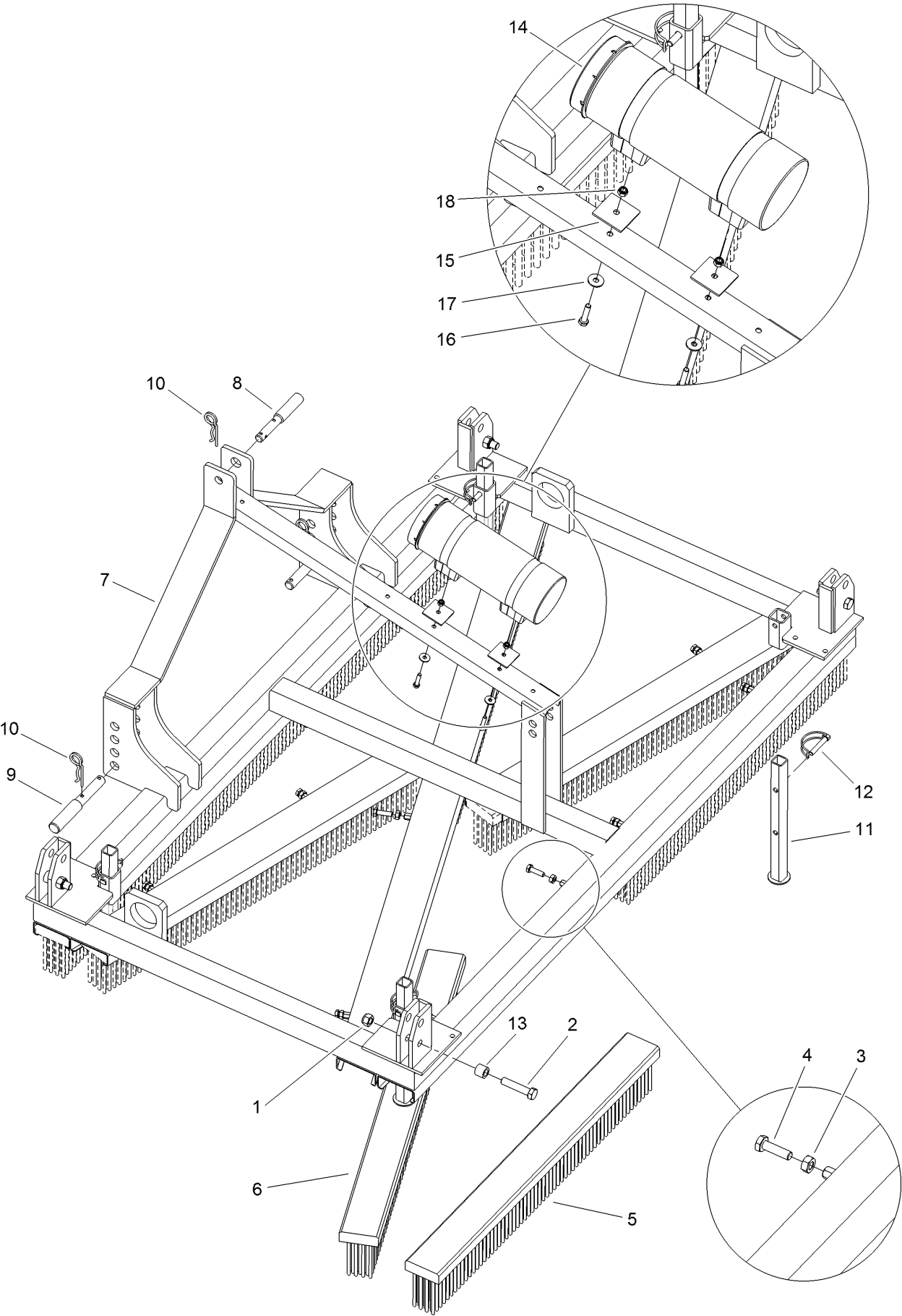


Frame Assembly (continued)

<i>Ref.</i>	<i>Part Number</i>	<i>Qty.</i>	<i>Description</i>
1	144-7905	1	Decal-Safety
2	105-0698	1	Decal-Caution

<i>Ref.</i>	<i>Part Number</i>	<i>Qty.</i>	<i>Description</i>
3	133-8061	1	Decal-Warning
4	136-3661	2	Decal-Quickgroom 710

Brush Assembly



Brush Assembly (continued)

<i>Ref.</i>	<i>Part Number</i>	<i>Qty.</i>	<i>Description</i>	<i>Ref.</i>	<i>Part Number</i>	<i>Qty.</i>	<i>Description</i>
1	144-7951	4	Nut, Self Lock M16 10.9 - ISO 10511	15	144-8129	2	Toolbox Contraplate
2	144-8952	4	Bolt M16 X 75 - ISO 4014	16	144-8130	2	Bolt M8 X 35 - ISO 4017
3	144-8139	16	Nut M10 - Din 934	17	144-8013	2	Washer-Large M8 - Din 9021
4	144-7947	16	Bolt M10 X 35 - ISO 4017	18	144-7944	2	Self Lock Nut M8 - ISO 10511
5	144-8960	4	Brush	19	144-8959	1	Brush Kit-Base, Opt T-0.8Mm ●
6	144-8961	4	Brush	20	144-8957	1	Brush Kit-Base, Opt T-1.5Mm ●
7	144-7788	1	Base Frame	21	144-8956	1	Brush Kit-Base, Stan T-2.2Mm ●
8	144-7711	1	Toplink Pin	22	144-8958	1	Brush Kit-Base, Opt T-3Mm ●
9	144-8953	2	3-Point Pin				
10	144-7710	3	R Clip				
11	144-8954	4	Jack				
12	144-8847	4	Pipe Linch Pin Ø10				
13	144-8955	4	Distance Bushing				
14	144-8128	1	Toolbox Complete				

● Not illustrated

Attachments and Accessories

For 46405BA QuickGroom 710 Soft

Product Name	Model/Part
Wing Soft, Single	46406BA
Towable Electric Lift Kit.....	46407
Magnet.....	46408
Spring Tine Kit	46409

Notes:

Notes:

Notes:

