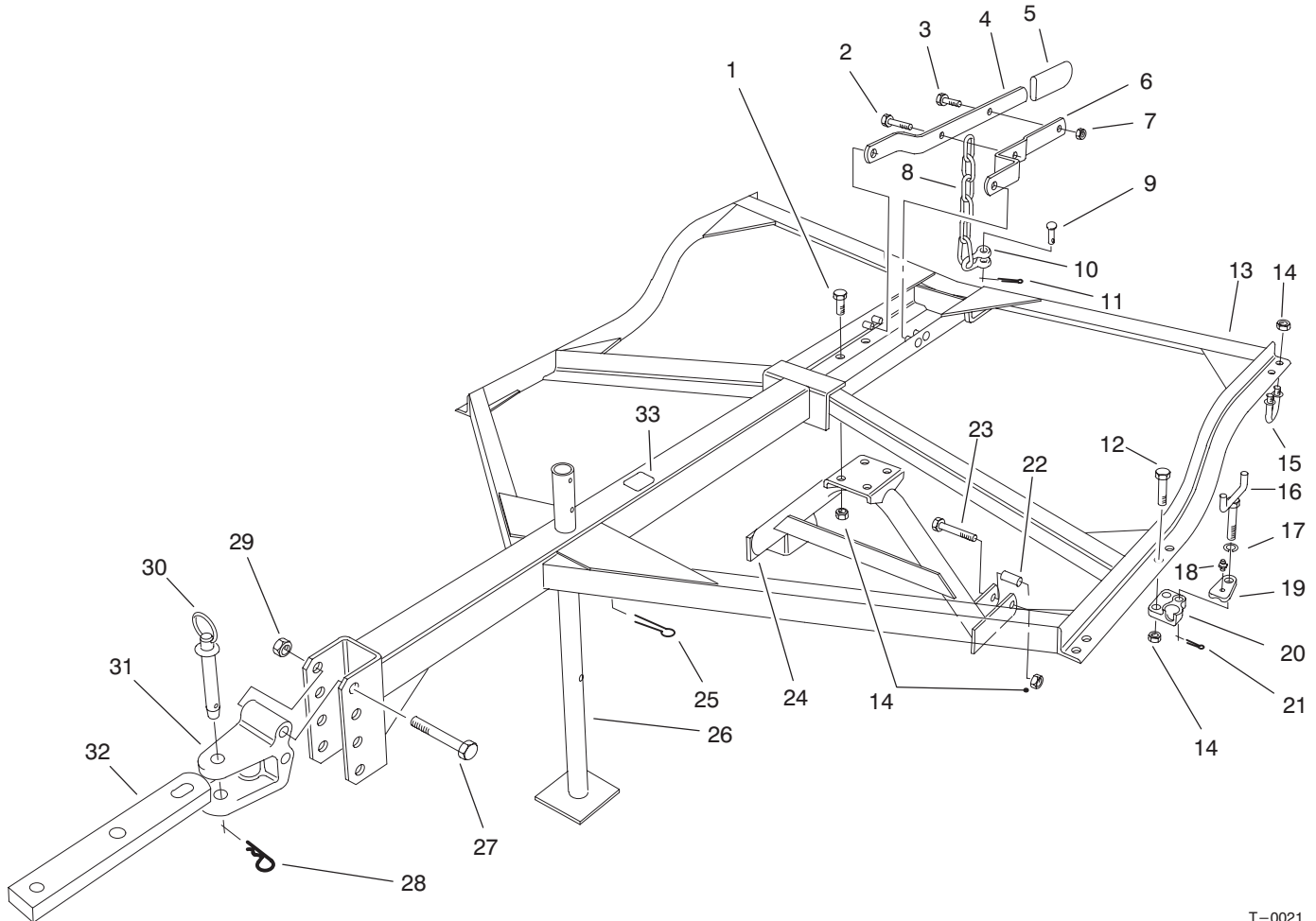




Model No. 33145-20000001 & Up  
 Model No. 33155-20000001 & Up  
 Model No. 33165-20000001 & Up

## PARTS CATALOG

### Reelmaster Universal Frame (3-5 & 7 Unit)



T-0021

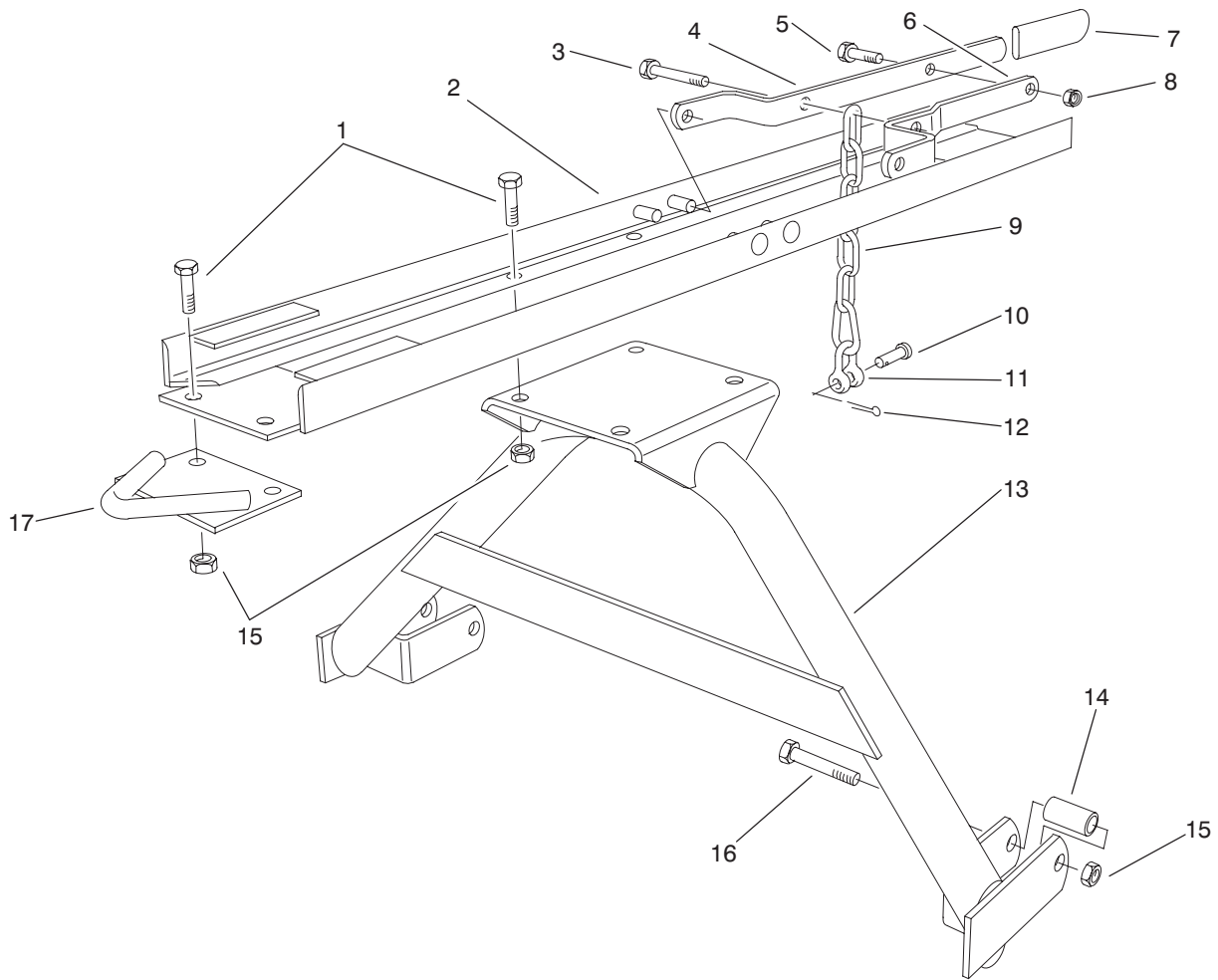
### Center Frame Assembly (3-5-7 Unit)

Ref. No.	Part No.	Description	No. Used	Ref. No.	Part No.	Description	No. Used
1	325-5	Screw-HH	4	†19	5-1107-01	Cap-Hinge	4
2	323-7	Screw-HH	1	†20	5-1103-01	Socket-Hinge LH	2
3	323-6	Screw-HH	1	†*	5-1104-01	Socket-Hinge RH	2
4	53-5250-01	Handle-Lift (Long)	1	†21	3272-6	Pin-Cotter	4
5	62-9130	Grip-Handle	1	22	5-1091	Spacer	2
6	53-5260-01	Handle-Lift (Short)	1	23	325-10	Screw-HH	2
7	32153-2	Nut-Lock	2	24	53-4910-01	Drawbar Assembly	1
8	5-4693	Chain-Lift	1	25	3272-38	Pin-Cotter	1
9	283-10	Pin-Clevis	1	26	53-5230-01	Support-Frame	1
10	282-13	Shackle	1	27	327-23	Screw-HH	2
11	3272-10	Pin-Cotter	1	28	3290-343	Pin-Cotter, Hair	1
†12	325-5	Screw-HH	8	29	3296-24	Nut-Lock	2
13	53-5100-01	Asm-Center Frame	1	30	13-6200	Pin-Hitch (Incl. Ref. #28)	1
14	32153-5	Nut-Lock	18	31	47-3550-01	Clevis-Hitch	1
15	12-0010	U-Bolt	2	32	53-4970-01	Extension-Tractor	1
†16	5-1108	Bolt-Hinge Clamp	4	33	93-7252	Decal-CE (Europe) (Only on: Model 33145)	1
†17	3253-7	Washer-Lock	4				
†18	302-5	Fitting-Grease	4				

\*Not Illustrated

†Used with 5 &amp; 7 unit models only.

© The TORO Company 2000  
 All Rights Reserved



T-0022

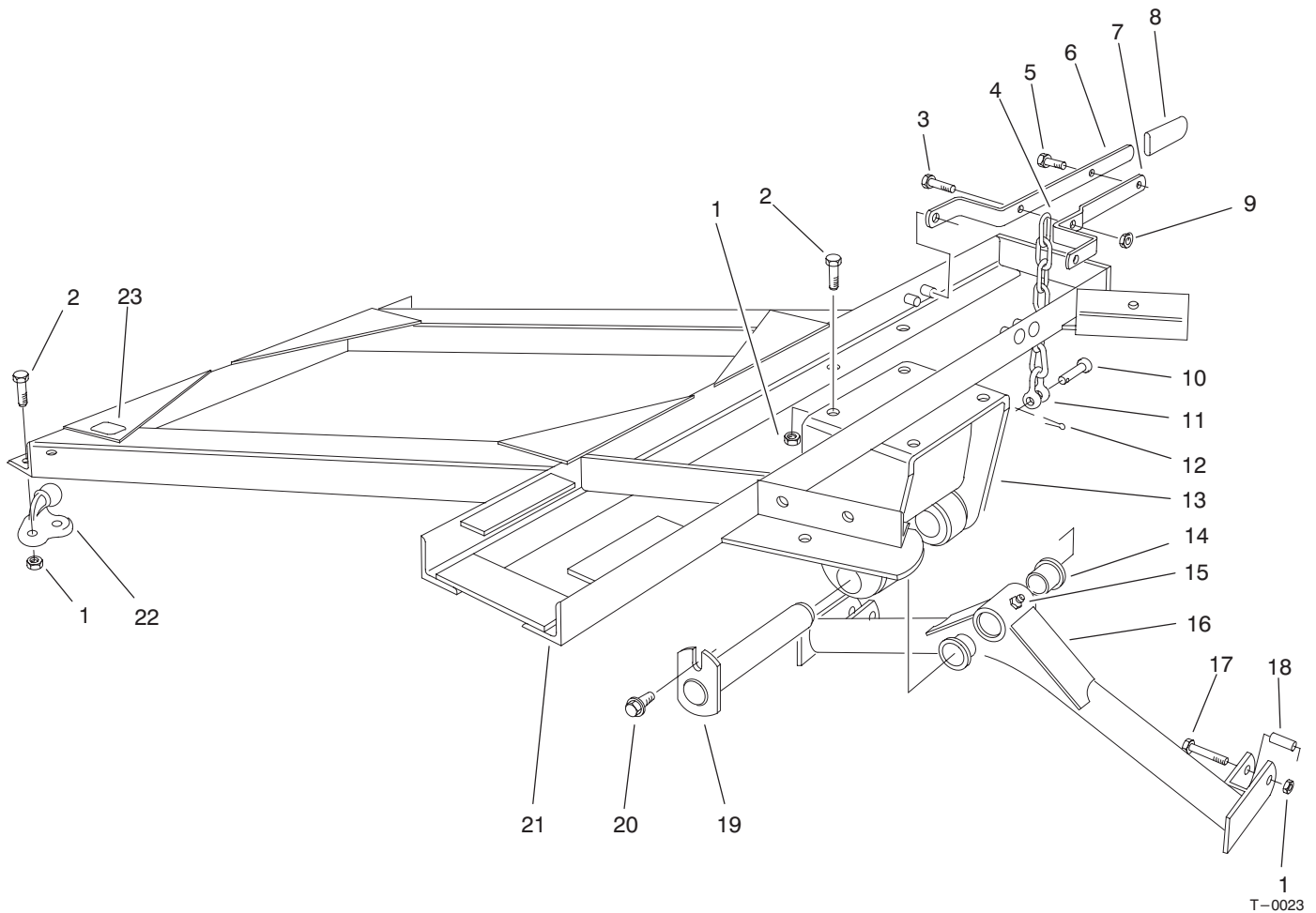
## Trailing Unit Frame Assembly

Ref. No.	Part No.	Description	No. Used
1	325-5	Screw-HH	6
2	53-5010-01	Asm-Frame	1
3	323-7	Screw-HH	1
4	53-5250-01	Handle-Lift (Long)	1
5	323-6	Screw-HH	1
6	53-5260-01	Handle-Lift (Short)	1
7	62-9130	Grip-Handle	1
8	32153-2	Nut-Lock	2
9	5-4693	Chain-Lift	1

Ref. No.	Part No.	Description	No. Used
10	283-10	Pin-Clevis	1
11	282-13	Shackle	1
12	3272-10	Pin-Cotter	1
13	53-4910-01	Asm-Drawbar	1
14	5-1091	Spacer	2
15	32153-5	Nut-Lock	8
16	325-10	Screw-HH	2
17	53-4870-01	Hitch	1

Note: Quantities listed are for One Trailing Unit Assembly.

Ref. page 8, Reelmaster Universal Frame Layout.



T-0023

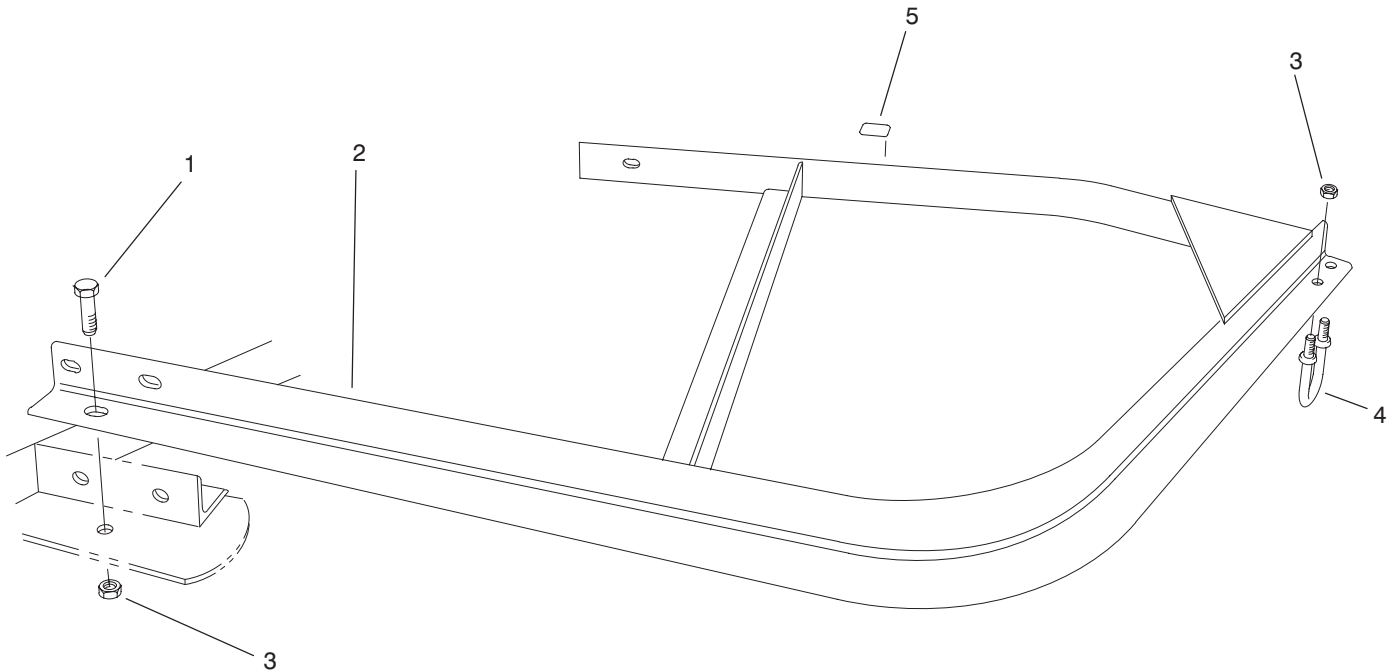
## Wing Unit Frame Assembly

Ref. No.	Part No.	Description	No. Used
1	32153-5	Nut-Lock	10
2	325-5	Screw-HH	8
3	323-7	Screw-HH	1
4	5-4693	Chain-Lift	1
5	323-6	Screw-HH	1
6	53-5250-01	Handle-Lift (Long)	1
7	53-5260-01	Handle-Lift (Short)	1
8	62-9130	Grip-Handle	1
9	32153-2	Nut-Lock	2
10	283-10	Pin-Clevis	1
11	282-13	Shackle	1
12	3272-10	Pin-Cotter	1
13	53-5300-01	Asm-Drawbar Pivot	1

Ref. No.	Part No.	Description	No. Used
14	5-1111	Bushing	2
15	302-5	Fitting-Grease	1
16	54-4130-01	Asm-Drawbar	1
17	325-10	Screw-HH	2
18	5-1091	Spacer	2
19	54-4110-01	Pin-Pivot	1
20	32144-41	Screw-TAP	1
21	53-5000-01	Asm-Frame LH	1
*	53-5200-01	Asm-Frame RH	1
22	5-1105-01	Ball-Hinge LH	2
*	5-1106-01	Ball-Hinge RH	2
23	93-7252	Decal-CE (Europe) (Only on: Model 33155)	1

\* Not Illustrated

Note: Quantities listed are for One Wing Unit Assembly.  
Ref. page 8, Reelmaster Universal Frame Layout.



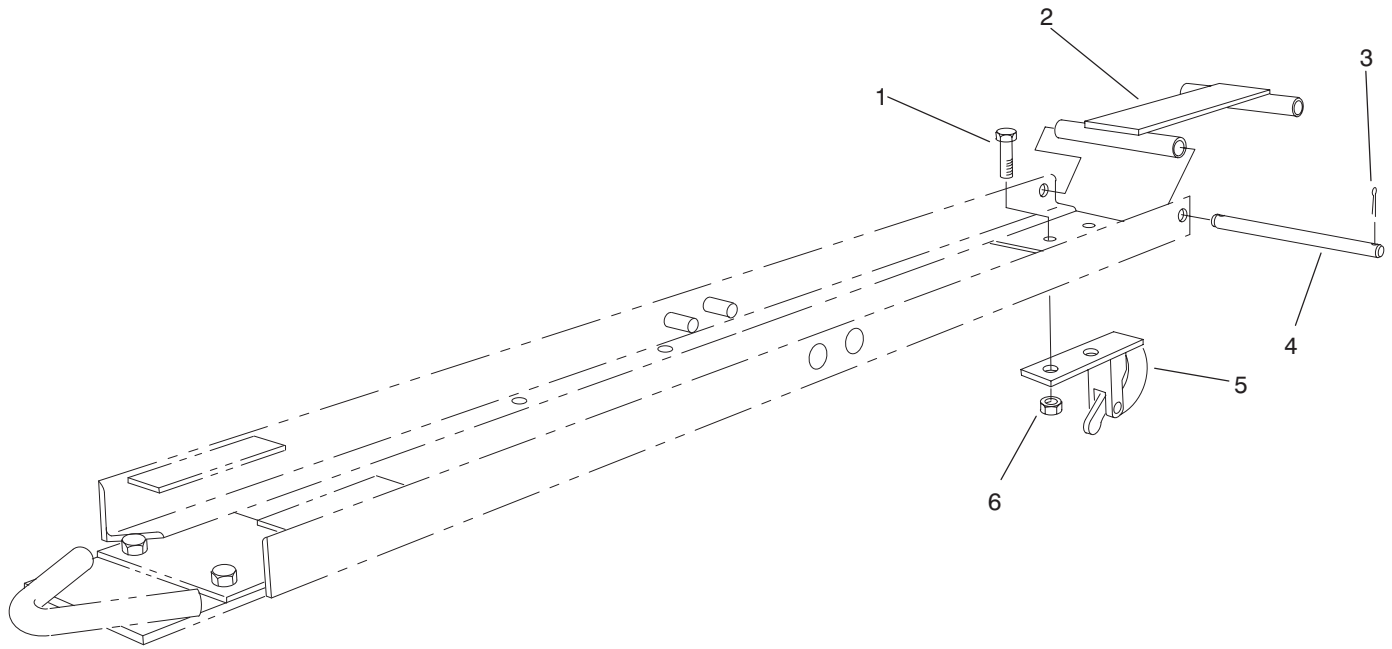
T-0024

## Wing Extension Frame Assembly

Ref. No.	Part No.	Description	No. Used
1	325-4	Screw-HH	6
2	54-4190-01	Frame-Wing Extension LH	1
*	54-4200-01	Frame-Wing Extension RH	1
3	32153-5	Nut-Lock	8

Ref. No.	Part No.	Description	No. Used
4	12-0010	U-Bolt	1
5	93-7252	Decal-CE (Europe) (Only On: Model 33165)	1

\* Not Illustrated  
 Note: Quantities listed are for One Wing Extension Assembly.  
 Ref. page 8, Reelmaster Universal Frame Layout.



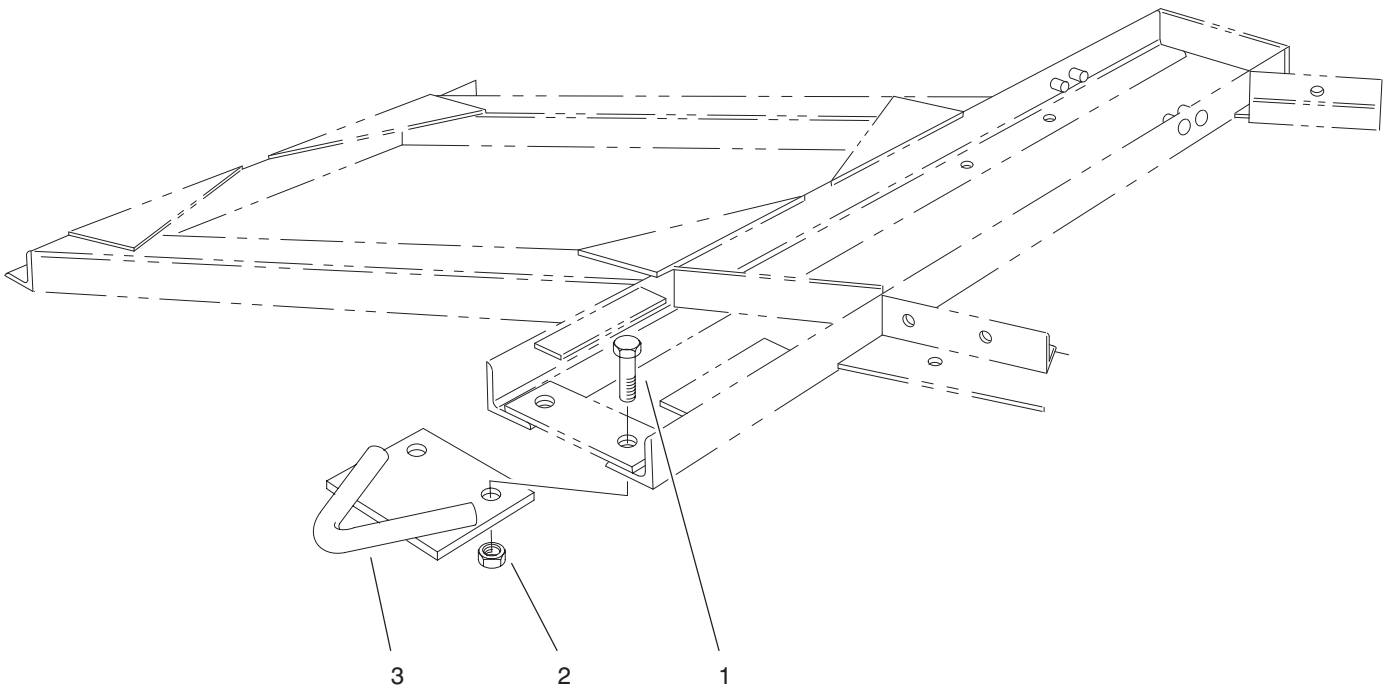
T-0025

## Trailing Unit Trailing Kit (Optional)

Ref. No.	Part No.	Description	No. Used
1	325-5	Screw-HH	2
2	5-1117	Bar-Trailing	1
3	3272-11	Pin-Cotter	4

Ref. No.	Part No.	Description	No. Used
4	5-1118	Pin-Hinge	2
5	5-1097	Hook-Snap	1
6	32153-5	Nut-Lock	2

Note: Quantities listed are for One Kit.  
 Ref. page 8, Trailing Kit Application Guide.



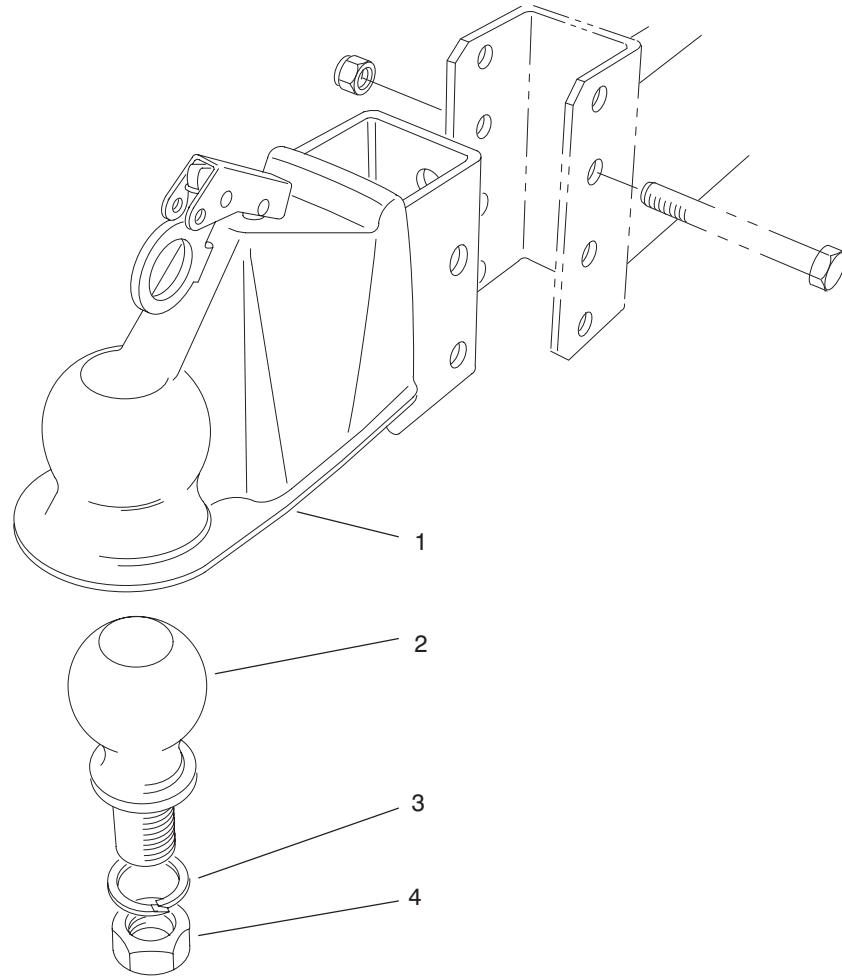
T-0026

## Wing Unit Trailing Kit (Optional)

Ref. No.	Part No.	Description	No. Used
1	325-5	Screw-HH	2
2	32153-5	Nut-Lock	2

Ref. No.	Part No.	Description	No. Used
3	53-4870	Hitch-Trailing	1

Note: Quantities listed are for One Kit.  
 Ref. page 8, Trailing Kit Application Guide



T-0027

### Ball Coupler Kit No. 53-9760 (Optional)

Ref. No.	Part No.	Description	No. Used
1	53-9780	Asm-Coupler, Ball Ball-Coupling (Incl. Ref. # 3 & 4)	1
2	53-9770		1

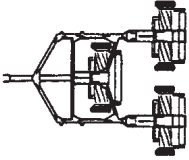
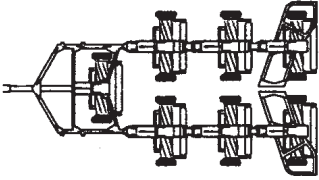
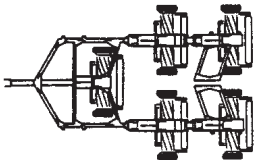
Ref. No.	Part No.	Description	No. Used
☆3		Washer-Lock Nut-Full	1
☆4			1

☆ Not Serviced

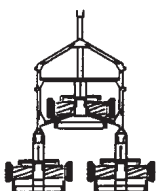
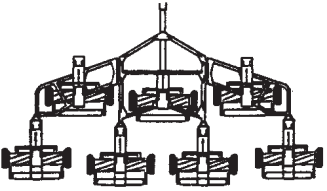
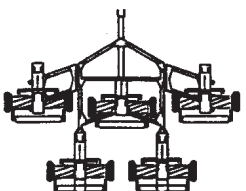
## Table of Contents

Description	Page	Description	Page
Center Frame Assembly (3-5 & 7 Unit) .....	1	Trailing Unit Trailing Kit (Optional) .....	5
Trailing Unit Frame Assembly .....	2	Wing Unit Trailing Kit (Optional) .....	6
Wing Unit Frame Assembly .....	3	Ball Coupler Kit No. 53-9760 (Optional) .....	7
Wing Extension Frame Assembly .....	4	Trailing Kit Application Guide .....	8

## Trailing Kit Application Guide

<p>3 UNIT UNIVERSAL FRAME TRAILING KITS REQ'D. No Additional Kits Needed</p> 	<p>7 UNIT UNIVERSAL FRAME TRAILING KITS REQ'D. 4-Trailing Unit Trailing Kits    2-Wing Unit Trailing Kits</p> 
<p>5 UNIT UNIVERSAL FRAME TRAILING KITS REQ'D. 2-Trailing Unit Trailing Kits    2-Wing Unit Trailing Kits</p> 	<p style="text-align: right;">T-2816</p>

## Reelmaster Universal Frame Layout

<p>3 UNIT UNIVERSAL FRAME CONTAINS 1-Center Frame                    2-Trailing Units</p> 	<p>7 UNIT UNIVERSAL FRAME CONTAINS 1-Center Frame                    4-Trailing Units 1-Right Hand Wing Unit        1-Left Hand Wing Unit 1-Right Hand Wing Extension   1-Left Hand Wing Extension</p> 
<p>5 UNIT UNIVERSAL FRAME CONTAINS 1-Center Frame                    2-Trailing Units 1-Right Hand Wing Unit        1-Left Hand Wing Unit</p> 	<p style="text-align: right;">T-2816</p>