



52 in. Side Discharge Cutting Unit Groundsmaster[®] 200 Series

Model No. 30555-210000001 and Up

Parts Catalog

Ordering Replacement Parts

To order replacement parts, please supply: the part number, the quantity, and the description of each part desired.

Understanding Reference Numbers

Each identified part in an illustration has a reference number. The reference number for a part also appears in the parts list, along with other information about the part.

This catalog uses two special reference number formats, one to indicate parts in a service assembly and another to indicate the quantity of a given part in an illustration.

Service Assembly Reference Numbers

Parts in service assemblies have reference numbers in the form **a:b**. The **a** represents the reference number of the entire service assembly and the **b** represents a sequential number unique to each part within the service assembly.

For example, a wheel assembly might be identified by reference number **6**, the tire by **6:1**, the valve by **6:2**, and the wheel by **6:3**. When you order the assembly identified by reference number **6**, you receive all parts identified by reference numbers **6:1**, **6:2**, and **6:3**. However, you may also order any part individually.

Reference numbers of this type appear in illustrations and in part lists.

Reference Numbers Indicating Quantity

In an illustration, if a reference number indicates more than one part, the reference number has the form **nX y**. The **n** represents the quantity of the part, the **X** is the multiplication symbol, and the **y** represents the reference number.

For example, in an illustration, the reference number **2X 37** means that two of the parts identified by reference number **37** are indicated.

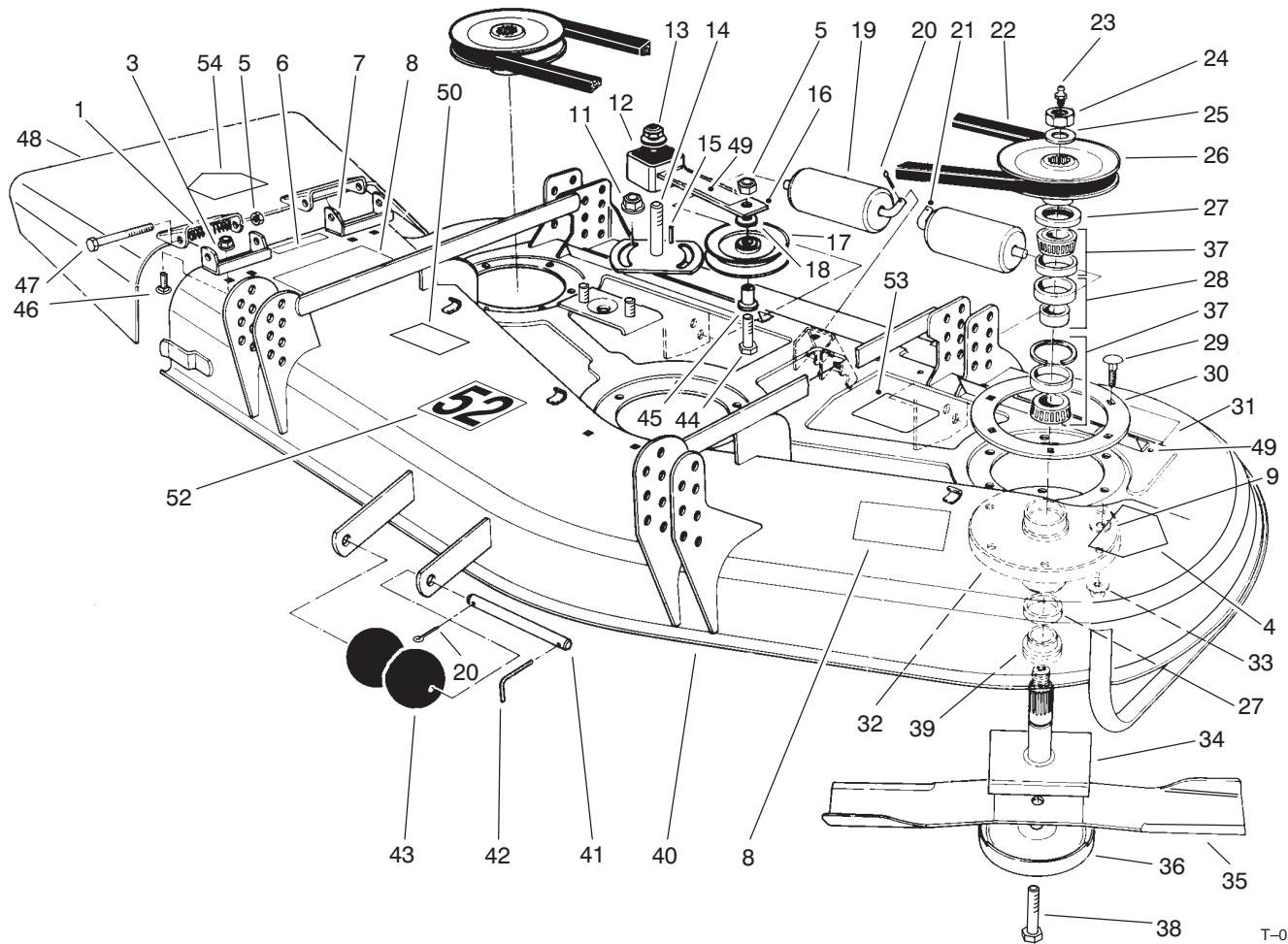
Contents

Description	Page	Description	Page
Deck and Spindle Assembly	3	Pivot Pin And Spacer Assembly	7
Deck and Spindle Assembly (Continued)	4	Gear Box Assembly No. 104-3441	8
Covers And Gear Box Assembly	5	Counter Balance Assembly	9
Carrier Frame Assembly	6		

Part Description Abbreviations

Part descriptions in this catalog may include the following abbreviations.

Abbreviation	Meaning	Abbreviation	Meaning
AR	as required	HYD	hydraulic
ASM	assembly	INC	incorporated
CARR	carriage	LH	left hand
DEG	degrees	NI	nylon insert
FH	flat head	PPH	Phillips pan head
GA	gauge	PTH	Phillips truss head
HF	hex flange	PTO	power take off
HH	hex head	RH	right hand
HHF	hex head flange	SFH	slotted fillister head
HLH	hex lag head	SHH	slotted hex head
HJ	hex jam	SQH	square head
HOC	height-of-cut	SHWH	slotted hex washer head
HS	hex socket	SPH	slotted pan head
HSBH	hex socket button head	SRH	slotted round head
HSFH	hex socket flat head	STD	standard
HSH	hex socket head	TAP	self tapping
HWH	hex washer head	TTH	Torx truss head
HWHTF	hex washer head thread forming	WH	wing head

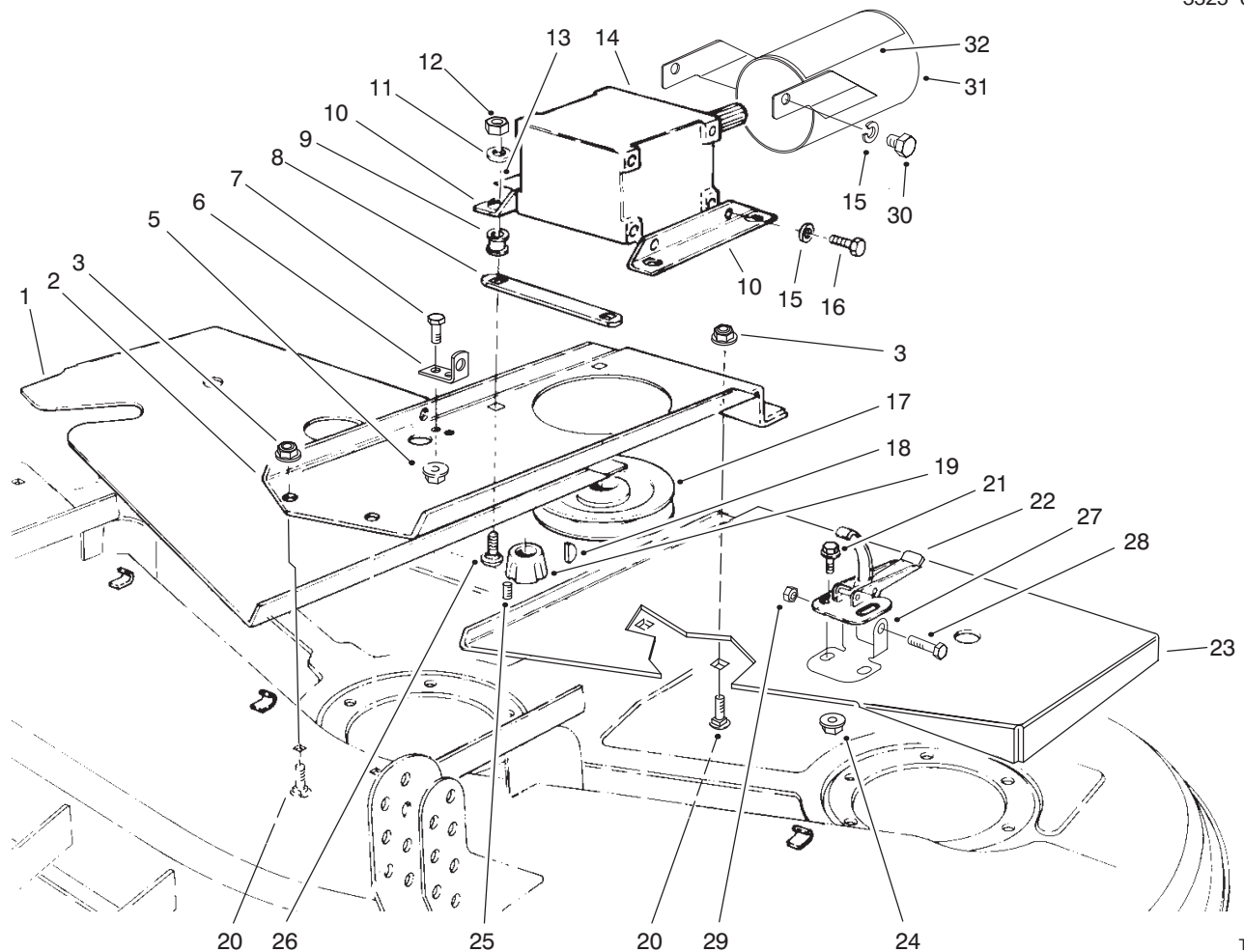


T-0574

Deck and Spindle Assembly

Ref. No.	Part No.	Qty.	Description
1	40-6230	2	Spring-Torsion
3	32128-20	4	Nut-HFH
4	100-6582	1	Decal-Danger
5	3296-5	3	Nut-Lock
6	100-6553	1	Decal-Danger
7	29-5590	2	Pivot
			Bracket-Deflector
8	93-7824	2	Decal-Danger
9	3256-24	18	Washer-Flat
11	3290-357	2	Nut-HFH
12	3256-27	1	Washer-Flat
13	3296-33	1	Nut-Lock
14	28-9060	1	Plate-Idler
15	5-1077	1	Key-Square
16	100-6178	1	Idler Arm ASM(Incl. Ref. #49)
17	65-5940	1	Pulley-Idler
18	7-0081	1	Washer-Special
19	36-1740	2	Roller-Deck
20	3272-11	3	Pin-Cotter
21	40-0340	2	Shaft-Rear Roller
22	27-1160	1	V-Belt
23	302-2	3	Fitting-Grease
24	32146-20	3	Nut-Lock
25	92-5836	3	Washer
26	27-0970	3	Pulley

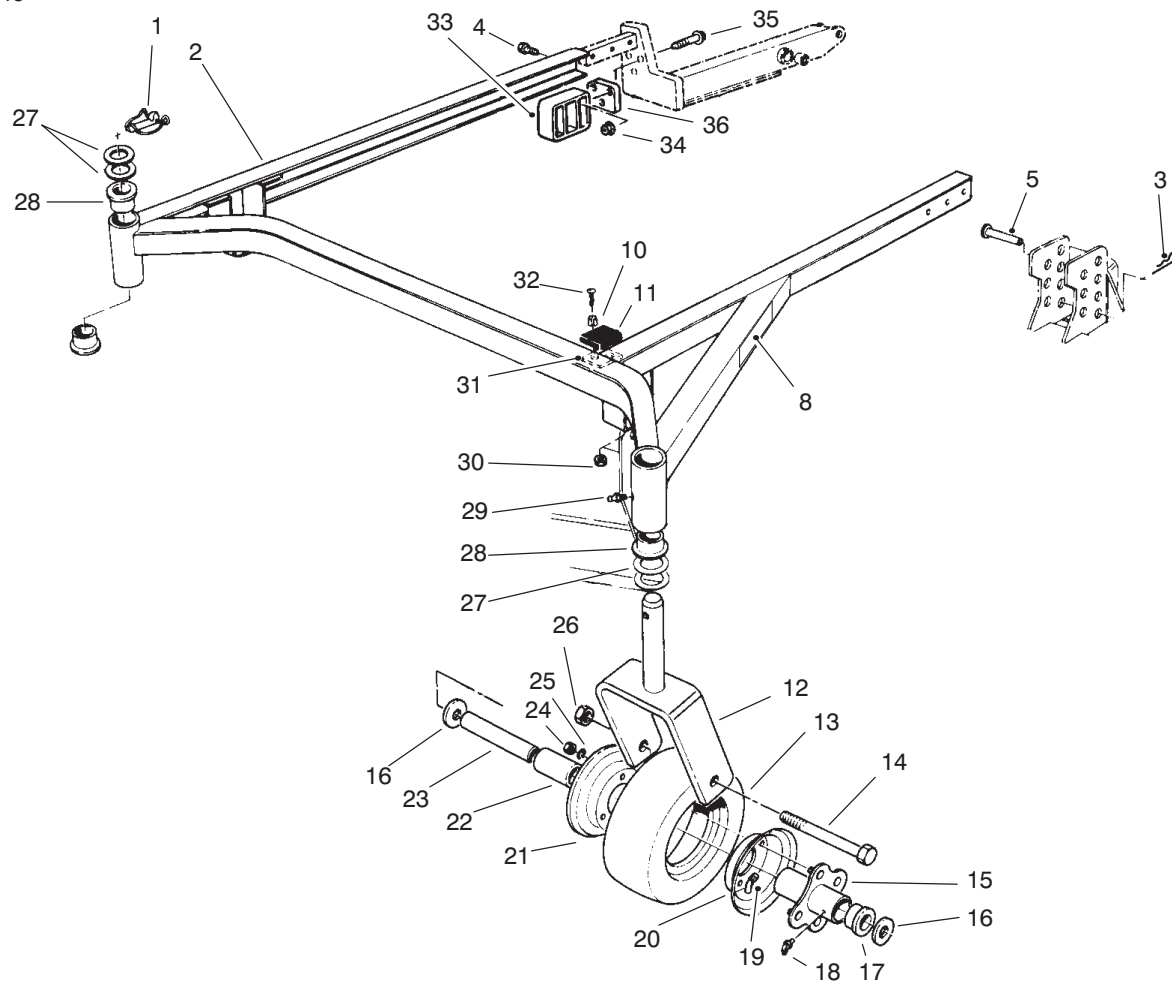
Ref. No.	Part No.	Qty.	Description
27	253-139	6	Seal-Wave
28	27-5970	1	Spacer-Matched Set
29	3231-22	18	Bolt-Carriage
30	27-7680	3	Ring-Deck Support
31	93-7818	1	Decal-Torque
32	61-4160	3	Housing-Spindle
33	32128-21	18	Nut-HFH
34	27-0920	3	Spindle-Shaft
35	27-0990	3	Blade
*	44-5480	3	Blade-High Sail (Optional)
*	56-2390	3	Blade-Extra High Sail
36	72-9361	3	Cup-Scalp, Anti
37	27-0960	3	Bearing Set-Matched
38	92-5816	3	Screw-Blade Bolt
39	27-0950	3	Spacer-Spindle Bearing
40	95-6274	1	Asm-Deck (Incl. Ref. #4, 6, 8, 31, 49, 50, 52 & 53))
41	40-6400	1	Shaft-Roller
42	57-0690	1	Pin-Cotter
43	29-4820	2	Roller
44	3211-8	1	Screw-HH
45	65-5950	1	Bushing-Pulley



T-0576

Covers And Gear Box Assembly

Ref. No.	Part No.	Qty.	Description	Ref. No.	Part No.	Qty.	Description
1	72-9330	1	Cover RH	26	3231-26	4	Bolt-Carriage
2	72-9230	1	Base-Gear Box	27	93-7043	2	Retainer
3	3290-357	4	Nut-HFH	28	321-8	2	Screw-HH
5	32128-20	2	Nut-HFH	29	3296-56	2	Nut-Lock Lock
6	72-9240	1	Bracket-Extension	30	323-2	2	Screw-HH
7	322-4	2	Screw-HH	31	99-8408	1	Guard-P.T.O. Shaft (Incl. Ref. #32)
8	68-9890	1	Cover-Gear Box	32	93-7283	1	Decal-Danger
9	63-9750	4	ISO Mount-Gear Box				
10	68-8560	2	Bracket-Gear Box				
11	63-8410	4	Washer				
12	32153-2	4	Nut-Lock				
13	93-6697	1	Decal-Lube				
14	104-3441	1	Asm-Gear Box				
15	3253-21	4	Washer-Flat				
15	3253-21	6	Washer-Flat (Europe)				
16	323-4	4	Screw-HH				
17	63-9900	1	Pulley-Gear Box				
18	3257-5	1	Key-Woodruff				
19	27-6140	1	Bushing-Taper Lock (Incl. Ref. #25)				
20	3231-27	4	Bolt-Carriage				
21	3290-321	6	Screw-Machine				
22	249-21	3	Latch-Draw				
23	72-9340	1	Cover LH				
24	32128-17	6	Nut-HFH				
25	3245-9	2	Screw-Set				

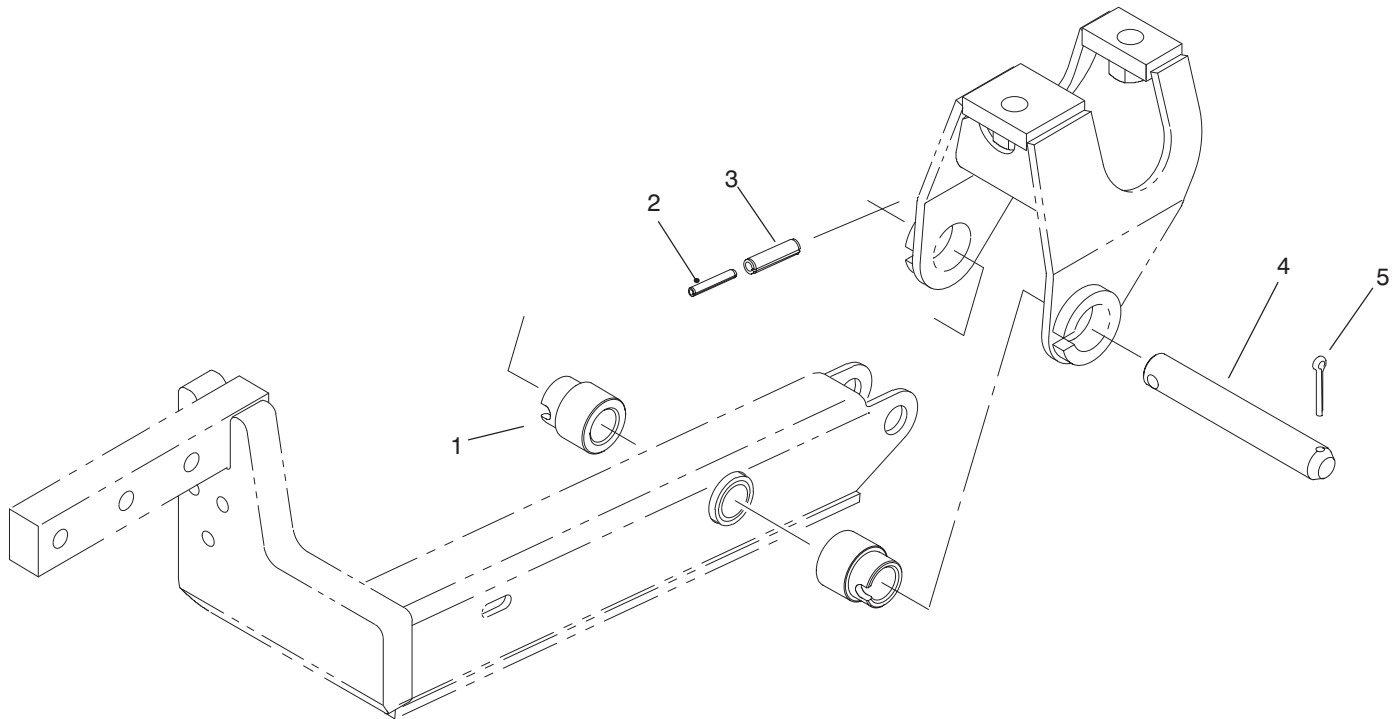


T-1249

Carrier Frame Assembly

Ref. No.	Part No.	Qty.	Description
1	283-71	2	Pin-Lynch
2	83-4550	1	Frame-Deck Suspension (Incl. Ref. #28 & 29)
3	3290-355	4	Pin-Hair
4	325-32	6	Screw-HH
5	283-55	4	Pin-Clevis
8	93-7819	1	Decal-H.O.C.
10	40-9520	4	Spacer-Split
11	40-0330	2	Cushion-Rubber
12	68-8900	2	Fork-Castor, Front
13	68-8960	2	Tire
14	325-19	2	Screw-HH
15	68-8940	2	Hub-Center (Incl. Ref. #18)
16	3256-6	4	Washer-Thrust
17	62-5580	4	Bushing
18	302-61	2	Fitting-Grease
19	68-8950	2	Tube w/Valve
20	68-8920	2	Wheel Half-Female
21	68-8930	2	Wheel Half-Male
22	62-5570	2	Bearing-Roller
23	68-8980	2	Bushing-Spanner
24	3219-2	8	Nut-Hex.
25	3253-4	8	Washer-Lock
26	32153-5	2	Nut-Lock

Ref. No.	Part No.	Qty.	Description
27	3-6781	8	Washer-Thrust
28	94-1291	4	Bushing-Special
29	302-5	2	Fitting-Grease
30	3296-2	4	Nut-Lock
31	42-6200	A/R	Cushion-Shim
32	32122-28	4	Screw-Mach. Truss Hd.
33	83-4520	2	Cradle-Rear
34	32128-40	6	Nut-HFH
35	66-9302	6	Screw-HFH
36	83-4580	2	Spacer
37	76-3080	1	Lift Arm RH (Incl. Ref. #38 & 39)
*	76-3090	1	Lift Arm LH (Incl. Ref. #38 & 39)
38	92-5648	4	Bushing
39	302-62	2	Fitting-Grease
*	68-8970	2	Castor Wheel (Incl. Ref. #13, 15, 17-22 & 24-25)
*	95-3077	1	Kit-Castor Wheel (2) (Incl. Ref. #13-26)



T-3199

Pivot Pin And Spacer Assembly

Ref. No.	Part No.	Qty.	Description
1	98-7926	4	Spacer-Lift Arm
2	32121-71	2	Pin-Spring
3	32121-49	2	Pin-Spring (Incl. Ref. #2 & 3)
5	3272-17	2	Pin-Cotter
4	98-2348	2	Asm-Pin, Pivot

Ref. No.	Part No.	Qty.	Description

