



**Count on it.**

**Parts Catalog**

**GrandStand® Mower**

**With 122cm TURBO FORCE® Cutting Unit**

Model No. 74504TE—Serial No. 316000001 and Up



# Ordering Replacement Parts

To order replacement parts, please supply the part number, the quantity, and the description of each part desired.

## Understanding Reference Numbers

Each identified part in an illustration has a reference number. The reference number for a part also appears in the parts list, along with other information about the part.

This catalog uses two special reference number formats, one to indicate parts in a service assembly and another to indicate the quantity of a given part in an illustration.

## Service Assembly Reference Numbers

Parts in service assemblies have reference numbers in the form a:b. The a represents the reference number of the entire service assembly and the b represents a sequential number unique to each part within the service assembly.

For example, a wheel assembly might be identified by reference number 6, the tire by 6:1, the valve by 6:2, and the wheel by 6:3. When you order the assembly identified by reference number 6, you receive all parts identified by reference numbers 6:1, 6:2, and 6:3. However, you may also order any part individually. Reference numbers of this type appear in illustration and in parts lists.

## Reference Numbers Indicating Quantity

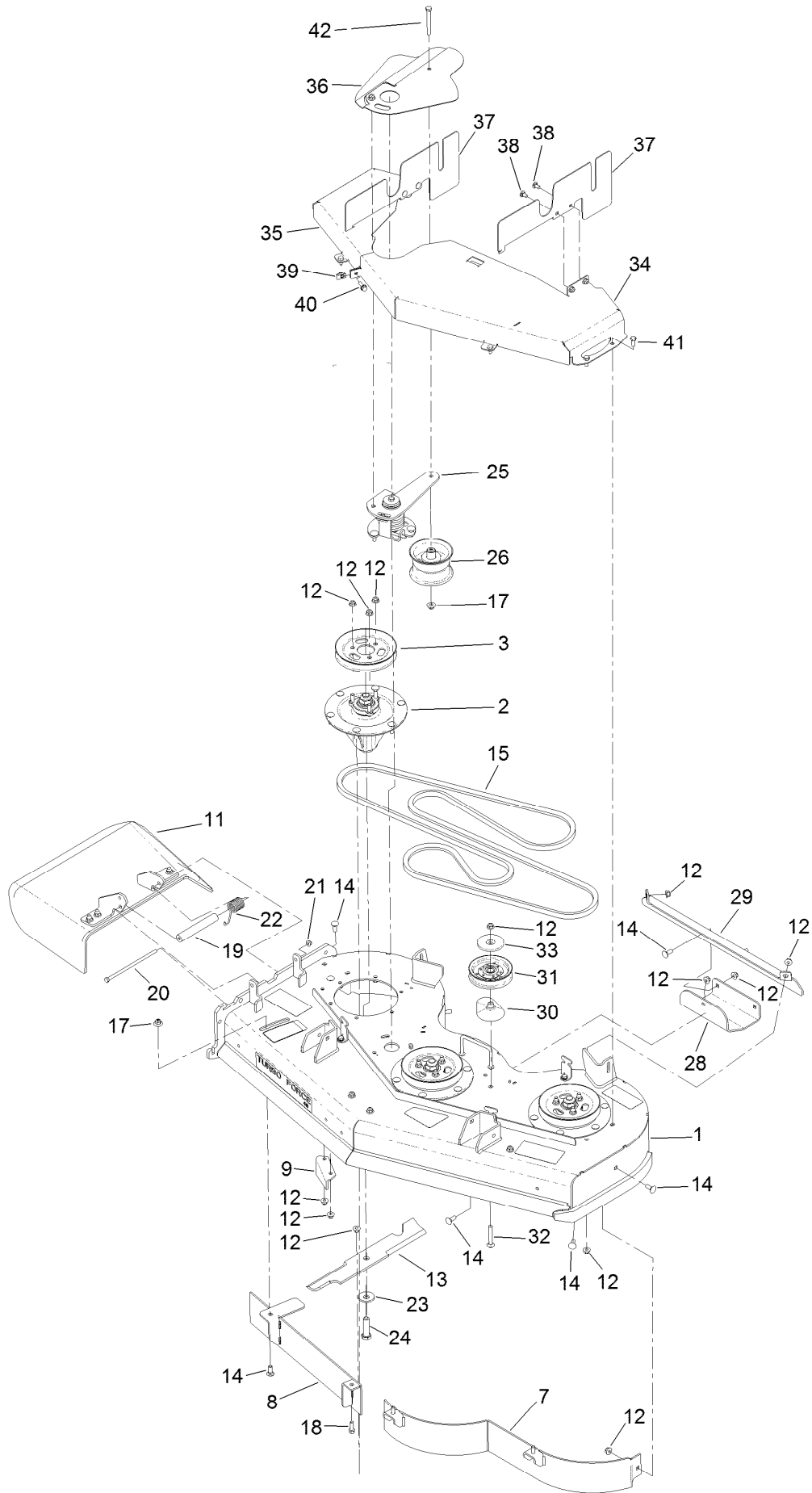
In an illustration, if a reference number indicates more than one part, the reference number has the form nX y. The n represents the quantity of the part, the X is the multiplication symbol, and the y represents the reference number.

For example, in an illustration, the reference number 2X 37 means that two of the parts identified by reference number 37 are indicated.

# Contents

Deck Assembly .....	4
Deck Decal Assembly No. 127-1931 .....	6
Spindle Assembly No. 127-0560 .....	8
Deflector Assembly No. 120-2451 .....	10
Ground Drive Assembly .....	12
Motion Control Assembly .....	14
Parking Brake Assembly .....	16
Deck Lift Assembly .....	18
HOC Lever Assembly No. 130-1755 .....	20
Frame Assembly .....	22
Wheel, Tire and Bearing Assembly No. 130-4558 .....	24
Platform Assembly .....	26
Engine Assembly .....	28
Fuel Tank Assembly .....	30
Wire Harness Assembly .....	32
Attachments and Accessories .....	34

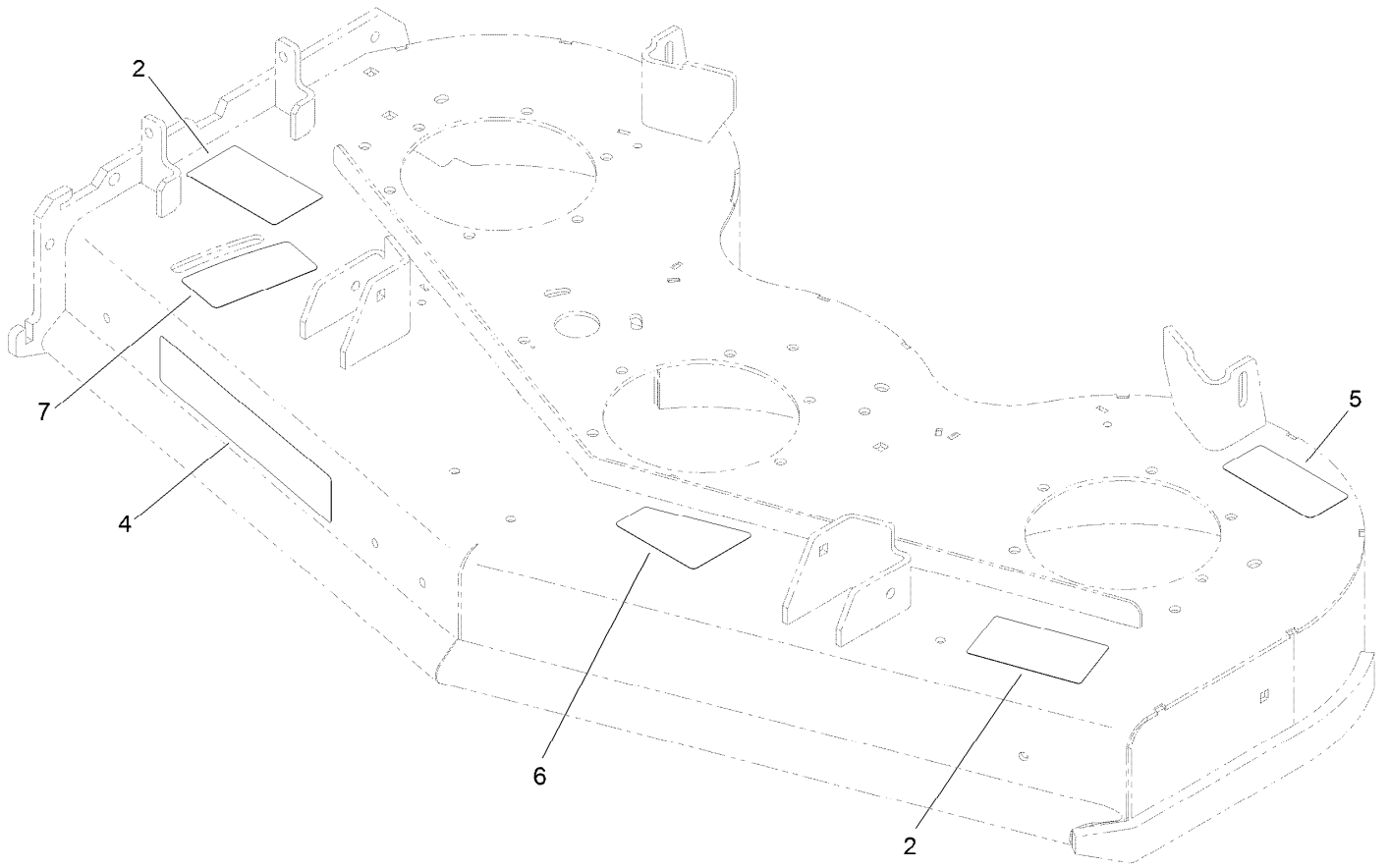
# Deck Assembly



## Deck Assembly (continued)

<i>Ref.</i>	<i>Part Number</i>	<i>Qty.</i>	<i>Description</i>	<i>Ref.</i>	<i>Part Number</i>	<i>Qty.</i>	<i>Description</i>
1	127-1931	1	Deck ASM	24	51-4060	3	Screw-Blade
2	127-0560	3	Spindle ASM	25	130-1812	1	Torsion Idler ASM
3	120-6433	3	Pulley	26	127-1971	1	Pulley-Idler
7	117-0410-01	1	48 Inch Baffle ASM	28	114-1908-01	1	Skid
8	121-1790-01	1	Baffle	29	130-6649-01	1	Bracket-Skid
9	107-8541-01	1	Baffle-Discharge	30	109-2872	1	Spacer-Pulley
11	120-2451	1	Deflector ASM	31	132-7543	1	Idler-Pulley, Flat
12	104-8301	49	Nut-HF, NI	32	3231-44	1	Screw-CARR
13	107-3192-03	3	Blade-16.5 Inch (High Flow)	33	132-5154	1	Shield-Dust
14	3231-2	10	Bolt-CARR	34	133-4624-01	1	Cover-Belt, LH (CE)
15	131-1121	1	Belt-V	35	133-4625-01	1	Cover-Belt, RH (CE)
17	109-6658	2	Nut-Flange, NI	36	133-4623-01	1	Cover-Idler (CE)
18	92-1624	3	Screw-HWH	37	133-4642-01	2	Cover-Side, LH (CE)
19	105-4622	1	Spacer	38	3230-18	4	Screw-CARR
20	322-50	1	Screw-HH	39	94-2413	1	Nut-U
21	104-8300	5	Nut-HF, NI	40	3234-29	1	Screw-HHF
22	108-4052	1	Spring-Torsion	41	323-5	4	Screw-HH
23	103-0865	3	Washer-Blade Bolt, Heavy	42	323-20	1	Screw-HH

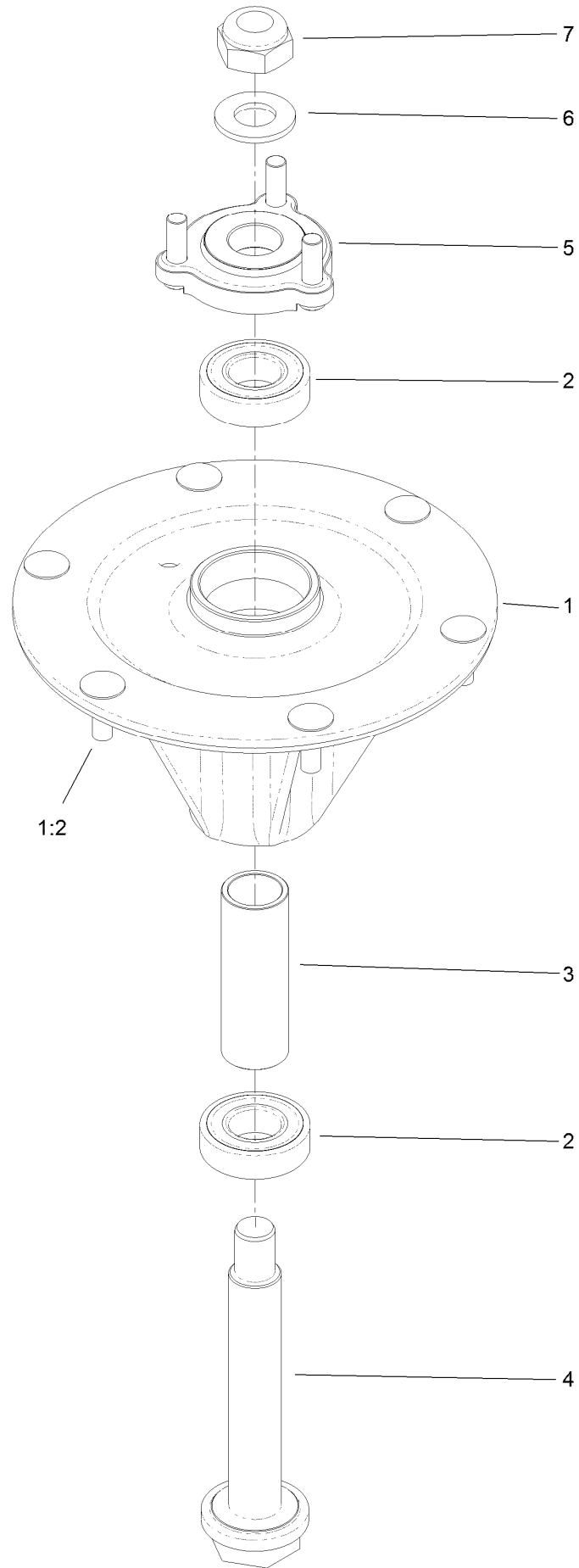
# Deck Decal Assembly No. 127-1931



## Deck Decal Assembly No. 127-1931 (continued)

<i>Ref.</i>	<i>Part Number</i>	<i>Qty.</i>	<i>Description</i>	<i>Ref.</i>	<i>Part Number</i>	<i>Qty.</i>	<i>Description</i>
2	133-4604	2	Decal-Danger	6	131-3507	1	Decal-Belt, Tension (CE)
4	107-1690	1	Decal	7	131-1180	1	Decal-Adjustment, Baffle
5	93-7818	1	Decal-Torque, Blade Bolt				

# Spindle Assembly No. 127-0560





## Spindle Assembly No. 127-0560 (continued)

<i>Ref.</i>	<i>Part Number</i>	<i>Qty.</i>	<i>Description</i>	<i>Ref.</i>	<i>Part Number</i>	<i>Qty.</i>	<i>Description</i>
1		1	Spindle Housing ASM W/Studs ●	4	127-0556	1	Shaft-Spindle, Ball Bearing
1:2	114-8195	6	Bolt-Neck, Ribbed	5	127-0557	1	Hub-Spindle (W/Studs)
2	116-0720	2	Bearing-Ball	6	92-5836	1	Washer
3	127-0554	1	Spacer-Bearing	7	3296-67	1	Nut-Lock, NI

● Not serviced separately

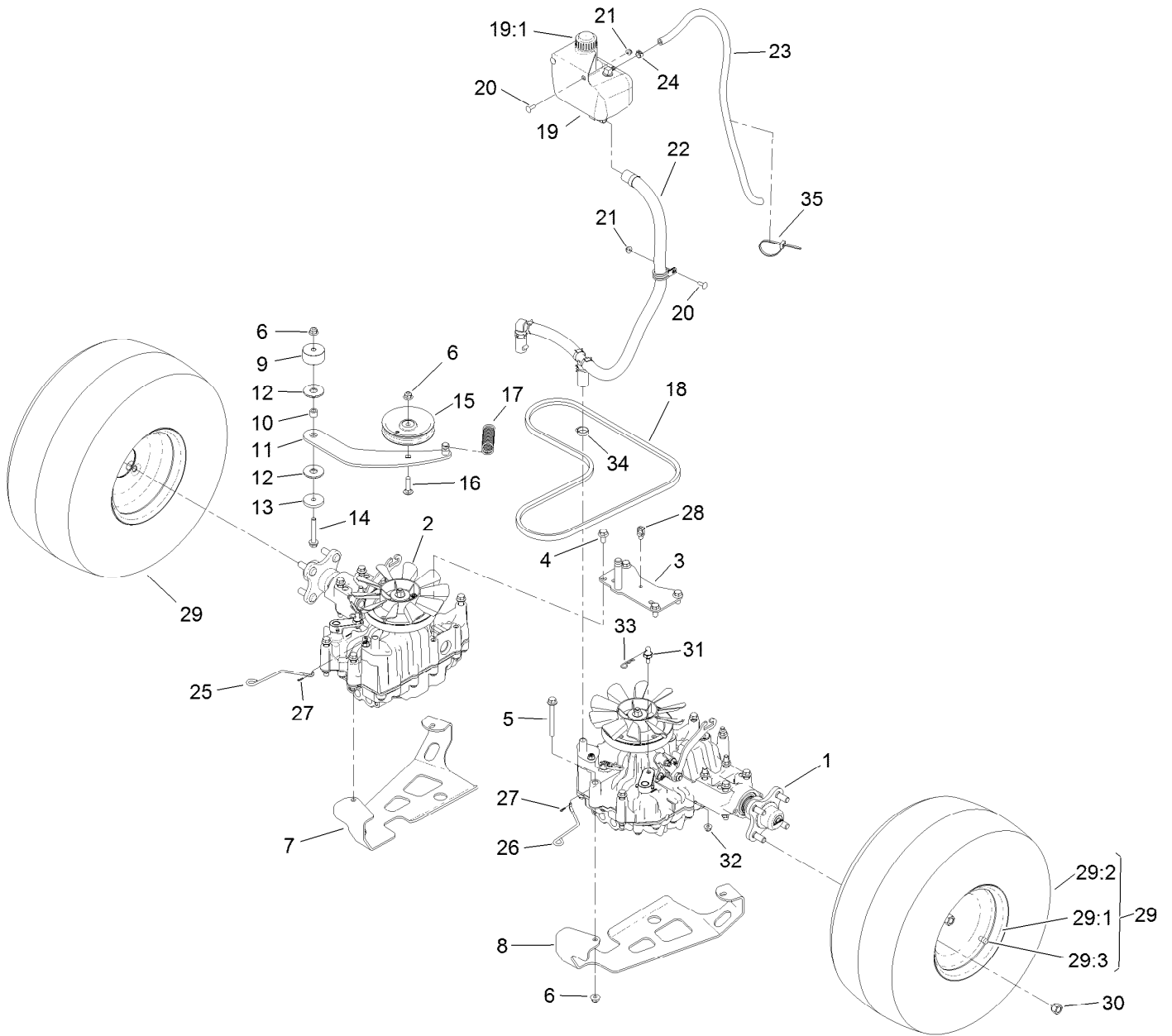
# Deflector Assembly No. 120-2451



## Deflector Assembly No. 120-2451 (continued)

<i>Ref.</i>	<i>Part Number</i>	<i>Qty.</i>	<i>Description</i>	<i>Ref.</i>	<i>Part Number</i>	<i>Qty.</i>	<i>Description</i>
1	3231-4	4	Screw-CARR	5	108-4059-01	1	Plate-Hinge, Rear
2	106-3246-01	1	Deflector	6	106-3253-01	1	Plate-Hinge, Front
3	106-3248-03	1	Strap-Discharge	7	104-8301	4	Nut-HF, NI
4	110-0759	1	Deflector-Rubber				

# Ground Drive Assembly

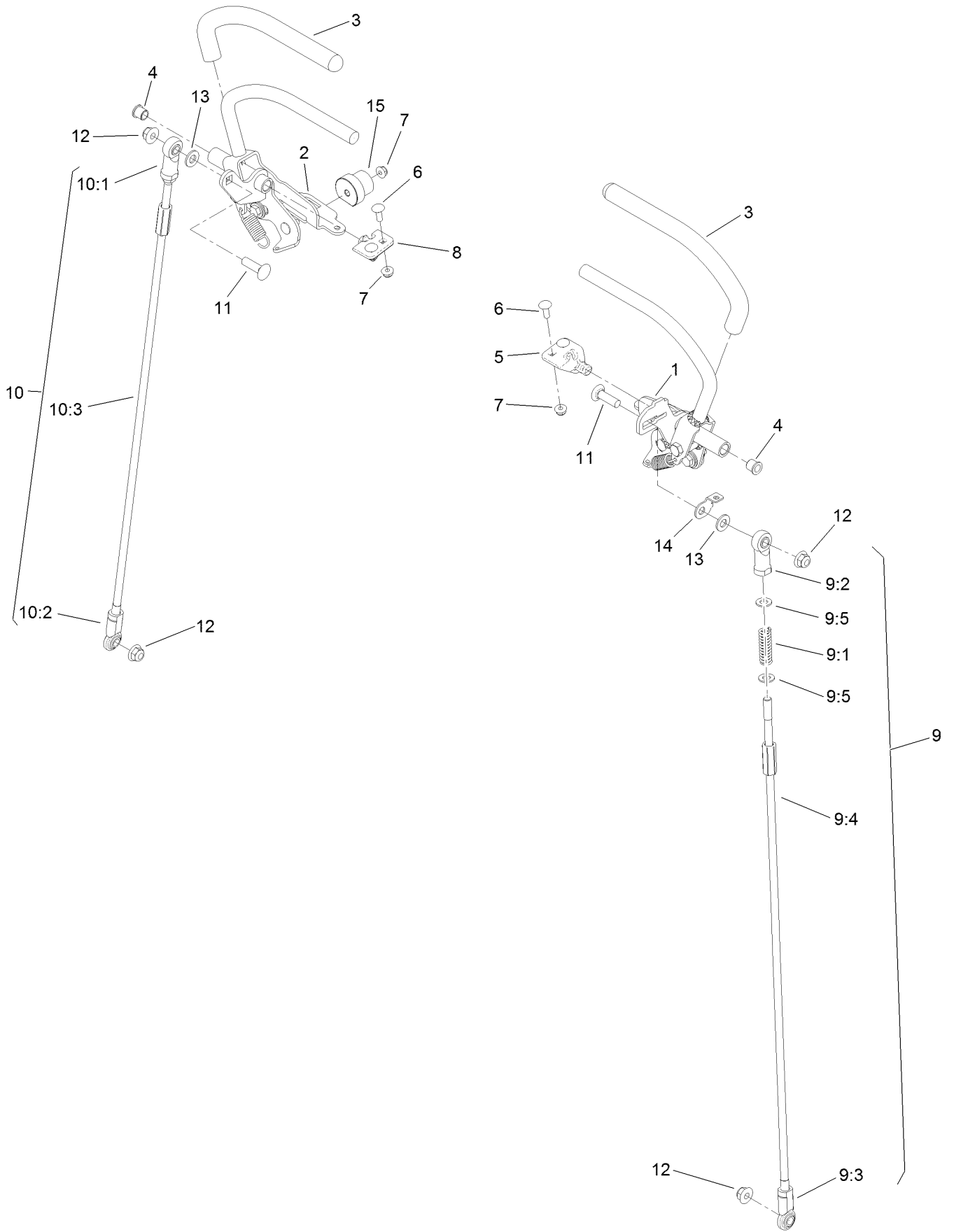


## Ground Drive Assembly (continued)

<i>Ref.</i>	<i>Part Number</i>	<i>Qty.</i>	<i>Description</i>	<i>Ref.</i>	<i>Part Number</i>	<i>Qty.</i>	<i>Description</i>
1	120-8396	1	Transaxle-LH	19	132-1135	1	Tank-HYD
1:99	133-1457	1	Oil Change Kit ●	19:1	133-8677	1	Cap-Vented
2	120-8397	1	Transaxle-RH	20	3229-25	3	Screw-CARR
2:99	133-1457	1	Oil Change Kit ●	21	104-7201	3	Nut-HF
3	131-1131-03	1	Support-Transaxle	22	131-7427	1	HYD Hose ASM
4	93-2569	4	Screw-HHF	23	109-0309	1	Hose-Fuel
5	116-4701	16	Screw-HHF	24	92-2379	1	Clamp-Hose
6	104-8301	18	Nut-HF, NI	25	131-7469	1	Rod-Bypass, RH
7	131-7405-03	1	Plate-Skid, Transmission (RH)	26	131-7470	1	Rod-Bypass, LH
8	131-7404-03	1	Plate-Skid, Transmission (LH)	27	108-2992	2	Pin-Hair
9	117-5351	1	Spacer	28	32180-030	1	Clip-Tie
10	1-413088	1	Bushing-Lever, Lift	29	132-7574	2	Wheel And Tire ASM
11	131-1175	1	Arm-Idler	29:1	133-1414	1	Rim-8 Inch, Gray
12	114-0463	2	Washer-Friction, Composite	29:2	133-1417	1	Tire
13	110-9981	1	Washer-Plain	29:3	232-27	1	Stem-Valve
14	3234-39	1	Screw-HHF	30	242-50	8	Nut-Lug
15	93-1622	1	Pulley-Idler	31	132-7584	2	Spacer-Hex
16	3231-4	1	Screw-CARR	32	104-8300	2	Nut-HF, NI
17	132-1184	1	Spring-Extension	33	3290-250	2	Pin-Cotter
18	131-1124	1	Belt-V	34	2412-141	2	Clamp-Drive, Worm
				35	3290-378	1	Tie-Cable

● Not illustrated

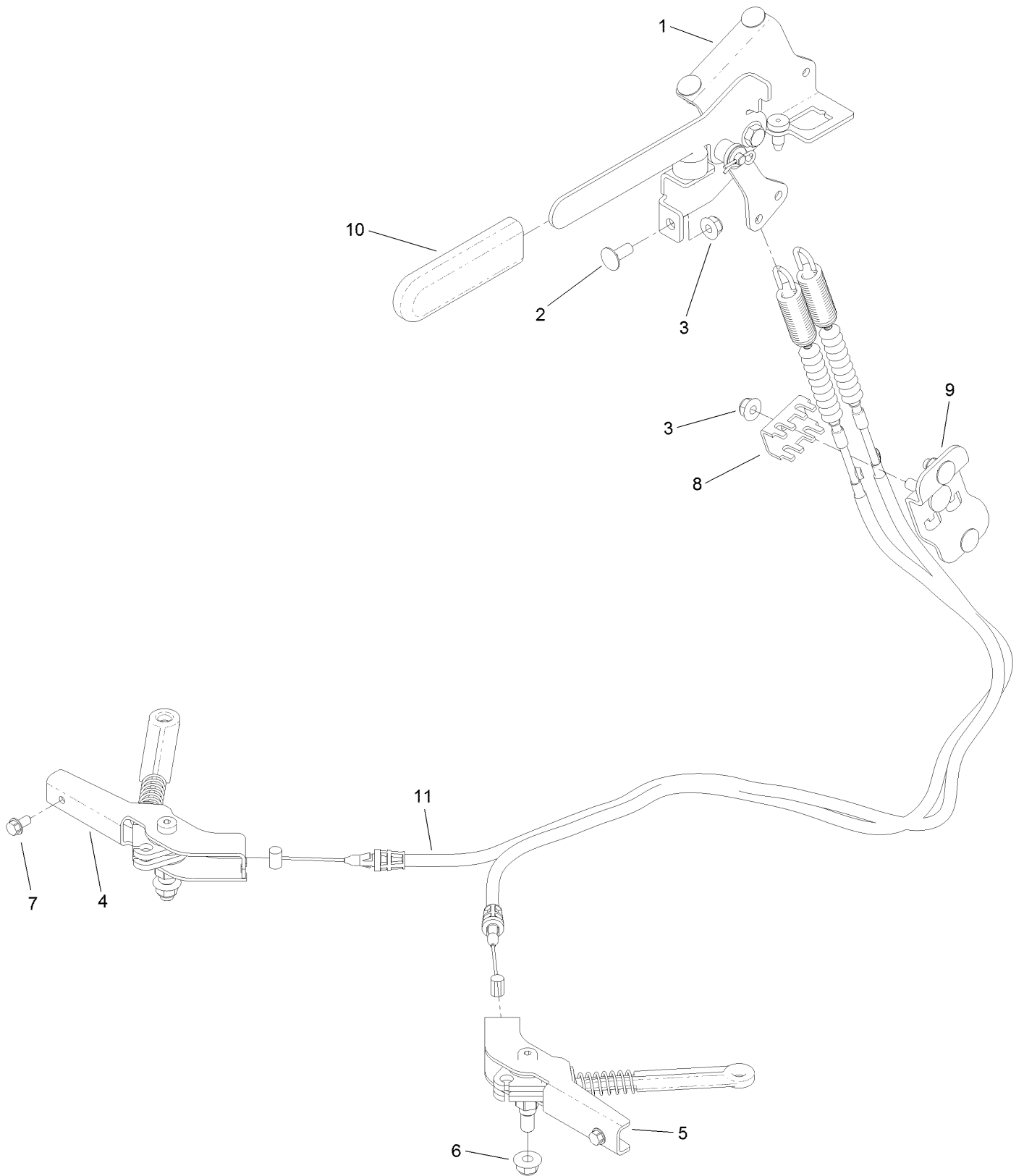
# Motion Control Assembly



## Motion Control Assembly (continued)

<i>Ref.</i>	<i>Part Number</i>	<i>Qty.</i>	<i>Description</i>	<i>Ref.</i>	<i>Part Number</i>	<i>Qty.</i>	<i>Description</i>
1	132-5157	1	LH Control Handle ASM	9:4	132-7515	1	Rod-Control
2	132-5158	1	RH Control Handle ASM	9:5	3256-45	2	Washer-Flat
3	119-0222	2	Grip	10	130-1807	1	RH Control Rod ASM
4	103-9928	2	Bearing	10:1	92-7008	1	End-Rod, Female
5	120-3288	1	Tab-Pivot, LH	10:2	103-1167	1	Joint-Ball End, LH
6	3229-1	4	Screw-CARR	10:3	132-7515	1	Rod-Control
7	104-7201	6	Nut-HF	11	3231-28	2	Screw-CARR
8	120-3287	1	Tab-Pivot, RH	12	104-8301	4	Nut-HF, NI
9	130-1803	1	LH Control Rod ASM	13	3256-24	2	Washer-Flat
9:1	1-603807	1	Spring-Return, Neutral	14	132-7538	1	Bracket-Adjustment, Speed
9:2	92-7008	1	End-Rod, Female	15	126-1499	2	Cam
9:3	103-1167	1	Joint-Ball End, LH				

# Parking Brake Assembly

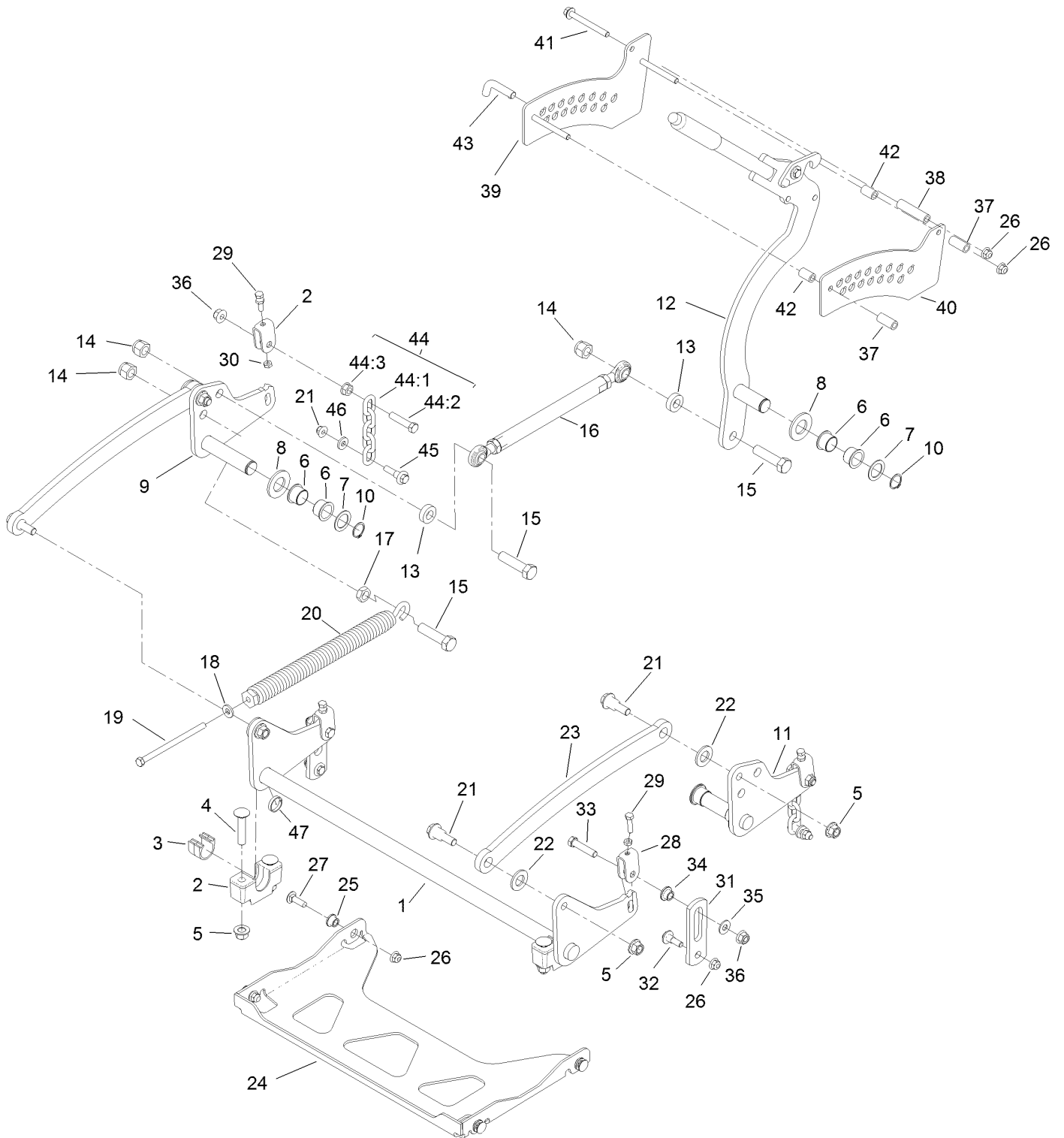




## Parking Brake Assembly (continued)

<i>Ref.</i>	<i>Part Number</i>	<i>Qty.</i>	<i>Description</i>	<i>Ref.</i>	<i>Part Number</i>	<i>Qty.</i>	<i>Description</i>
1	132-5170	1	Brake Handle ASM	7	32144-4	2	Screw-HWH
2	3230-23	5	Bolt-CARR	8	132-1187	1	Clamp-Cable
3	104-8300	6	Nut-HF, NI	9	132-7582	1	Mount-Cable, Brake
4	132-5168	1	RH Brake Caliper ASM	10	1-633268	1	Grip-Lever
5	132-5169	1	LH Brake Caliper ASM	11	131-1195	2	Cable-Brake
6	104-8301	2	Nut-HF, NI				

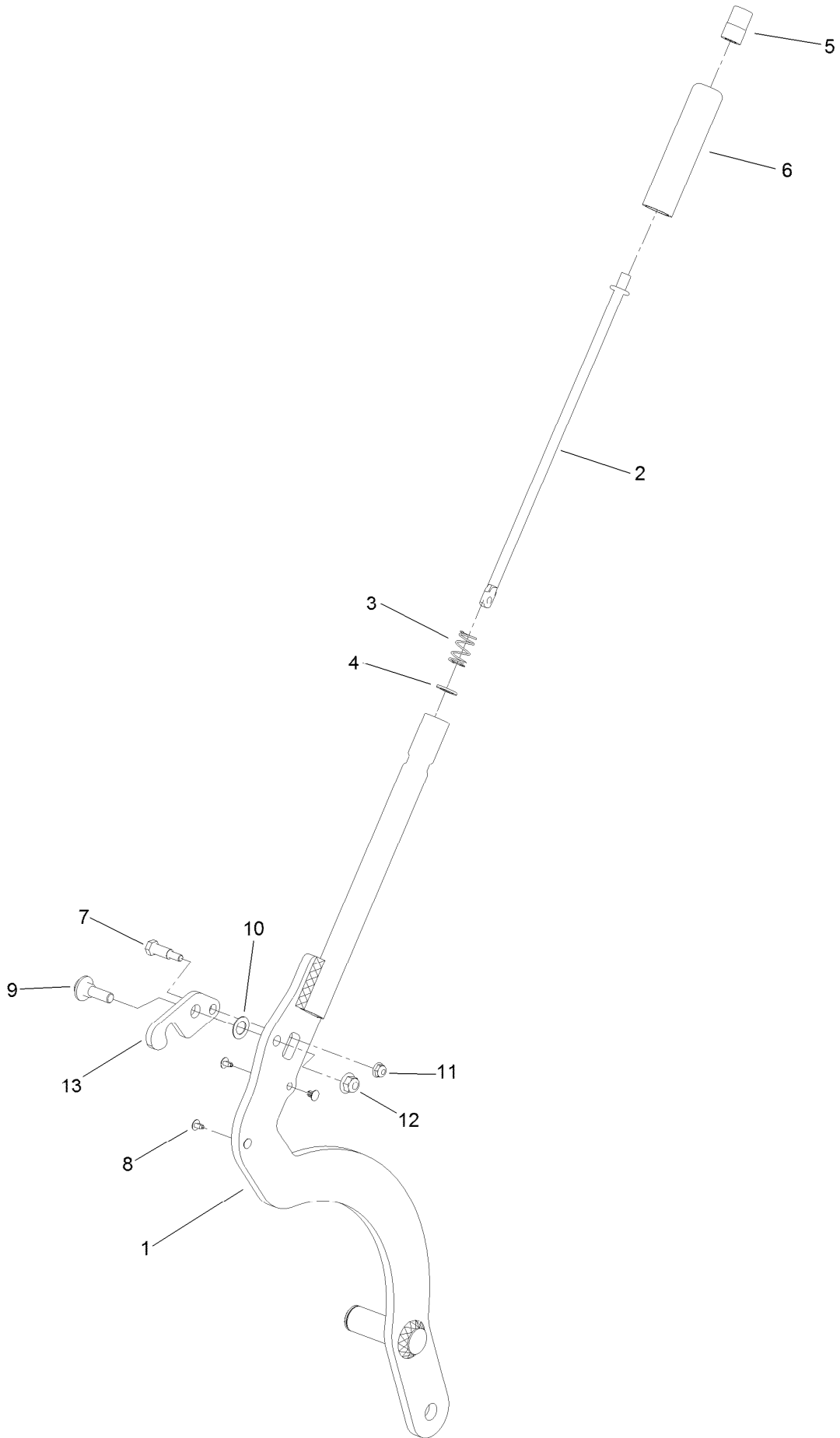
# Deck Lift Assembly



## Deck Lift Assembly (continued)

<i>Ref.</i>	<i>Part Number</i>	<i>Qty.</i>	<i>Description</i>	<i>Ref.</i>	<i>Part Number</i>	<i>Qty.</i>	<i>Description</i>
1	120-8405-01	1	Shaft-Cross, Front	26	104-8301	11	Nut-HF, NI
2	109-9409	2	Support-Bearing, Cross Shaft (Front)	27	3231-25	4	Bolt-CARR
3	109-9410	2	Bearing-Cross Shaft, Front	28	109-9066	4	Yoke-Adjust, Deck
4	116-1700	4	Bolt-CARR	29	322-47	4	Screw-HH
5	99-5107	8	Nut-Lock	30	3218-2	8	Nut-Jam
6	127-0369	6	Bushing	31	130-6589	2	Link-Lift
7	10-8110	3	Washer-Thrust	32	109-9840	2	Screw-Shoulder, HHF
8	3256-62	3	Washer-Flat	33	109-9065	2	Screw-HH
9	120-8411-01	1	Arm-Lift, RH	34	116-2428	2	Bushing-Flanged
10	32151-29	3	Ring-Retaining	35	3256-4	2	Washer-Flat
11	120-8410-01	1	Arm-Lift, LH	36	114-8417	4	Nut-HF, NI
12	130-1755	1	HOC Lever ASM	37	104-0151	2	Spacer
13	119-6223	2	Washer	38	84-2350	1	Spacer-Long
14	3296-53	3	Nut-Lock, NI	39	132-7581	1	HOC Plate And Decal ASM
15	327-7	3	Screw-HH	40	131-1103-01	1	Plate-HOC, Inner
16	130-6615	1	HOC Link ASM	41	116-4701	3	Screw-HHF
17	3218-6	1	Nut-Jam	42	80-7590	2	Spacer
18	98-5975	1	Washer-Belleville	43	116-5584	1	Pin-HOC
19	323-58	1	Bolt-TAP, HH	44	116-0756	2	Deck Lift Chain ASM
20	116-0886	1	Spring-Extension	44:1	1-633447	1	Chain-Lift, Deck
21	116-0780	4	Screw-Shoulder, HHF	44:2	109-9065	1	Screw-HH
22	3256-28	4	Washer-Flat	44:3	32128-37	1	Nut-HF
23	127-1948-03	2	Link-Lift	45	130-0742	2	Bolt-Shoulder
24	131-1155-03	1	Plate-Strut	46	43-0940	2	Spacer
25	109-8788	4	Bushing-Flanged	47	133-1431	1	Spacer-Split

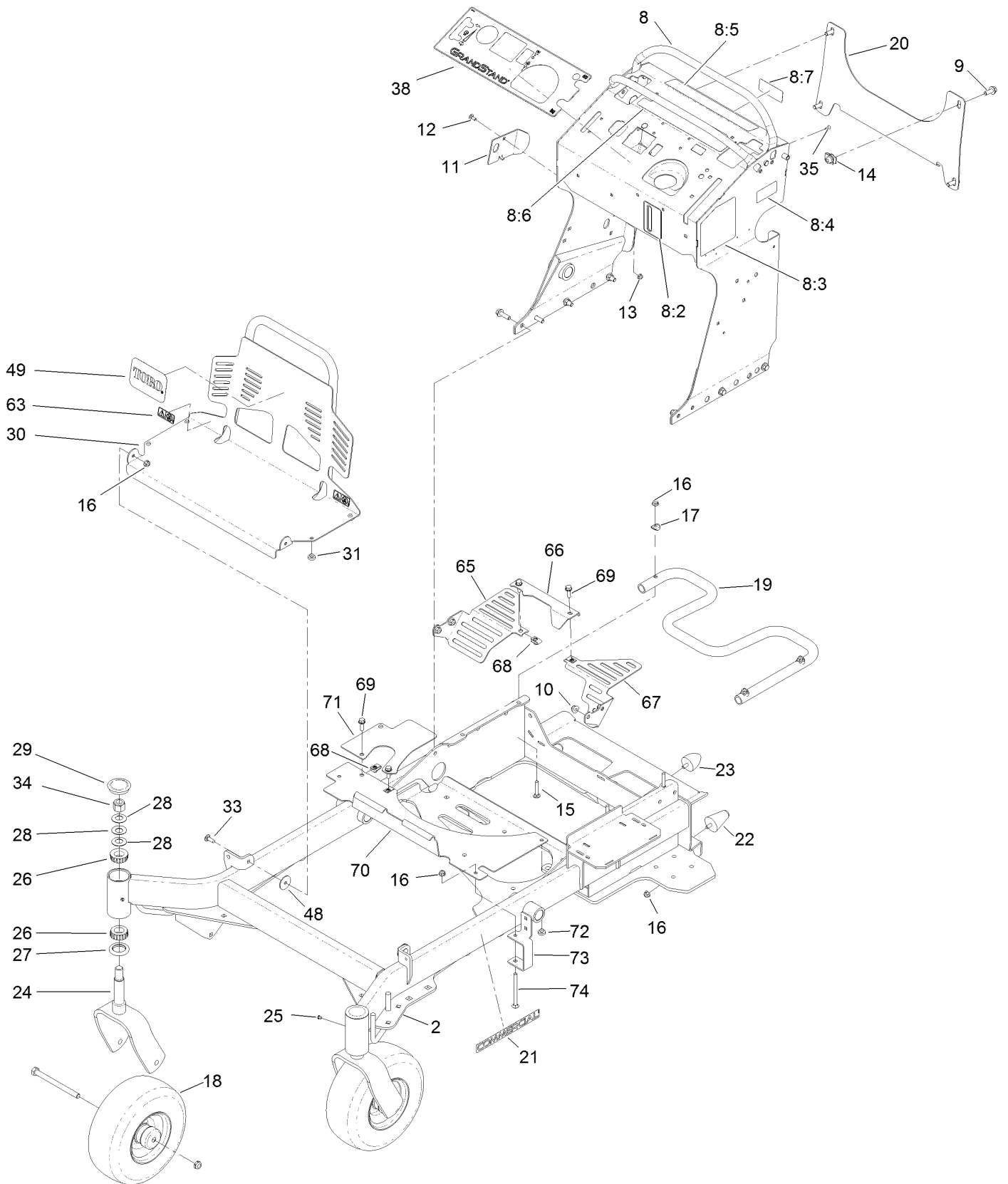
# HOC Lever Assembly No. 130-1755



## HOC Lever Assembly No. 130-1755 (continued)

<i>Ref.</i>	<i>Part Number</i>	<i>Qty.</i>	<i>Description</i>	<i>Ref.</i>	<i>Part Number</i>	<i>Qty.</i>	<i>Description</i>
1	130-1775-01	1	Lever-Lift	8	103-1363	4	Rivet
2	119-2331	1	Rod-Latch	9	614672	1	Screw-Shoulder, HWH
3	114-8187	1	Spring-Compression	10	98-1629	1	Washer
4	114-1207	1	Washer-Special	11	104-7201	1	Nut-HF
5	115-2750	1	Knob	12	104-8301	1	Nut-HF, NI
6	115-3592	1	Grip	13	131-7452	1	Latch-HOC
7	119-2309	1	Bolt-Shoulder				

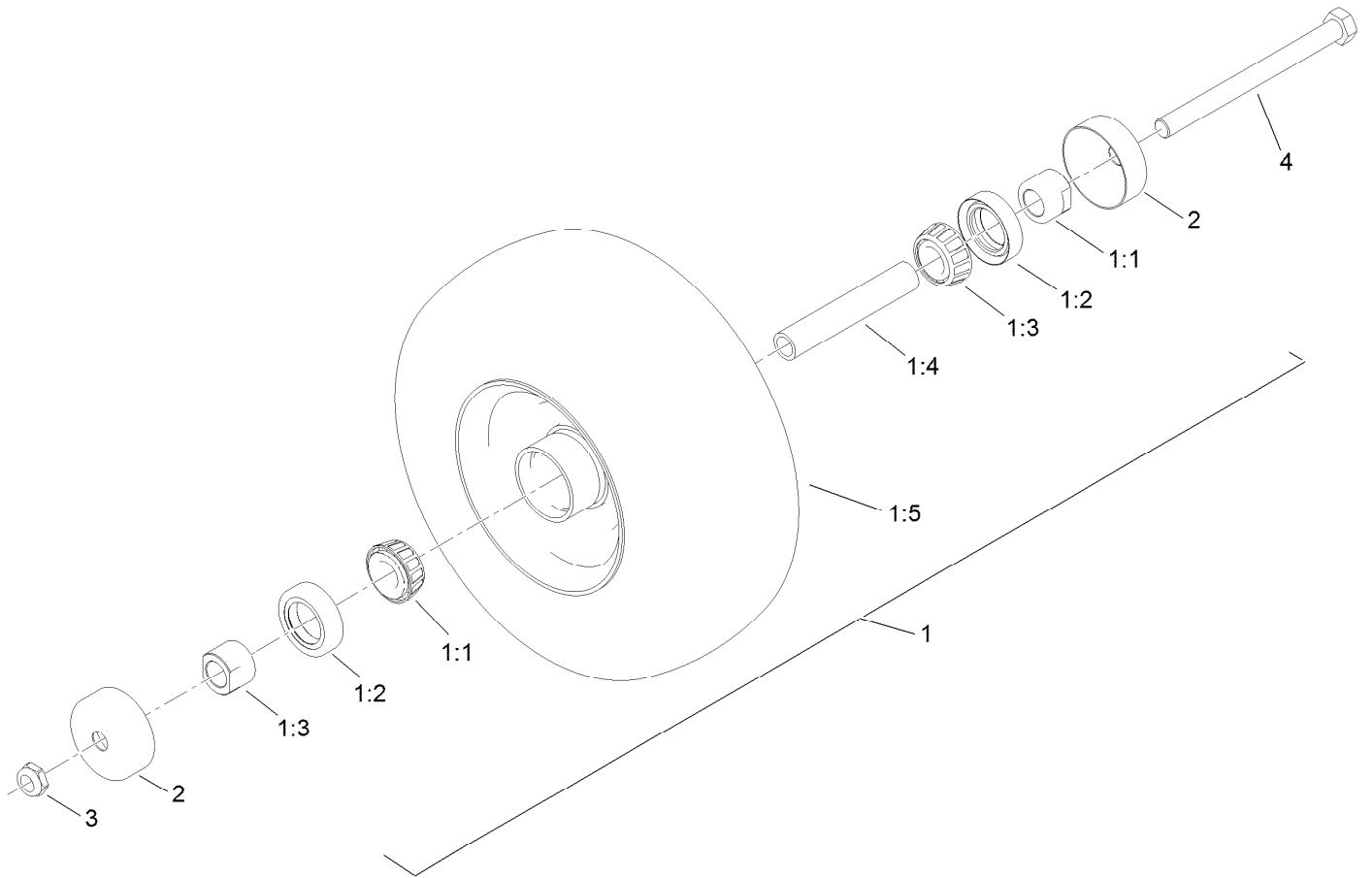
# Frame Assembly



## Frame Assembly (continued)

<i>Ref.</i>	<i>Part Number</i>	<i>Qty.</i>	<i>Description</i>	<i>Ref.</i>	<i>Part Number</i>	<i>Qty.</i>	<i>Description</i>
2	131-7423-01	1	Frame	25	1-811010	2	Plug
8	132-7537	1	Tower Decal ASM	26	1-543509	4	Bearing-Roller, Tapered
8:2	131-3524	1	Decal-Level, Oil	27	116-5647	2	Seal-Grease
8:3	131-3529	1	Decal-Service Aid	28	1-633508	6	Washer-Bellville
8:4	116-8775	1	Decal-Fill, Fuel	29	103-4882	2	Cap-Grease
8:5	131-3527	1	Decal-Caution	30	132-5150-03	1	Guard-Engine
8:6	131-3526	1	Decal-Controls	31	1-513658	4	Bumper
8:7	131-3528	1	Decal-Fuse	33	3230-10	2	Bolt-CARR
9	3234-42	4	Screw-HHF	34	3296-51	2	Nut-Lock, NI
10	104-8301	8	Nut-HF, NI	35	3290-271	2	Rivet-Pop
11	131-7455	1	Plate-Striker	38	131-3525	1	Decal-Panel, Control
12	3229-11	1	Screw-CARR	48	107-3002	2	Washer-Nylon
13	104-7201	1	Nut-HF	49	105-8278	1	Decal
14	105-4886	4	Nut-Tinnerman	63	133-4641	2	Decal-Warning, No Riders
15	3230-5	3	Bolt-CARR	65	133-4619-01	1	Guard-Fan, RH (CE)
16	104-8300	9	Nut-HF, NI	66	133-4618-01	1	Guard-Fan, Center (CE)
17	107-3844	3	Washer	67	133-4622-01	1	Guard-Fan, LH (CE)
18	130-4558	2	Wheel/Tire And Bearing ASM	68	94-2413	4	Nut-U
19	132-5161-01	1	Tube-Mount, Fuel Tank	69	3234-29	4	Screw-HHF
20	132-1145-03	1	Bracket-Cross	70	133-4646-03	1	Guard-Extension
21	117-3591	2	Decal-Commercial	71	133-4649-03	1	Guard-Belt, CE
22	114-1925	2	Bumper-Rubber	72	1-513658	2	Bumper
23	114-1926	2	Bumper-Rubber	73	131-3530-03	1	Bracket-Mounting, Guard
24	121-7988-01	2	Fork-Caster	74	106-9758	1	Screw-CARR

# Wheel, Tire and Bearing Assembly No. 130-4558





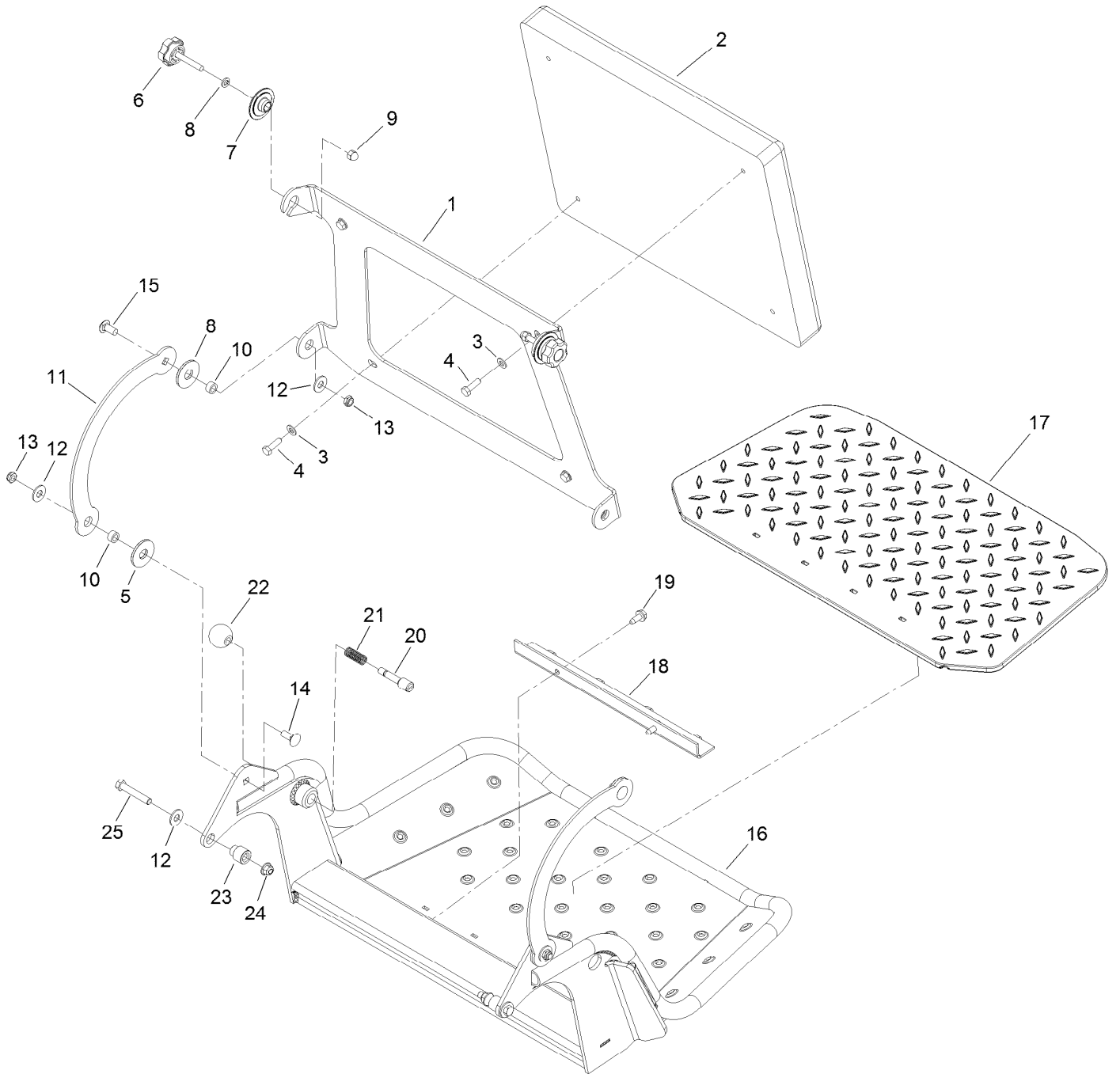
# Wheel, Tire and Bearing Assembly No. 130-4558 (continued)

<i>Ref.</i>	<i>Part Number</i>	<i>Qty.</i>	<i>Description</i>	<i>Ref.</i>	<i>Part Number</i>	<i>Qty.</i>	<i>Description</i>
1		1	Wheel And Bearing ASM ●	1:5	130-4563	1	Wheel And Tire ASM
1:1	1-633585	2	Bearing-Cone, Taper	2	103-2768	2	Guard-Seal
1:2	103-0063	2	Seal-Caster	3	3296-45	1	Nut-Hex
1:3	103-3051	2	Spacer-Nut ■	4	325-20	1	Screw-HH
1:4	103-3157	1	Axle-Caster				

● Not serviced separately

■ Use Pro-Lock, Nut Type (P/N 1-840022, .5ml tube) on spacer nut

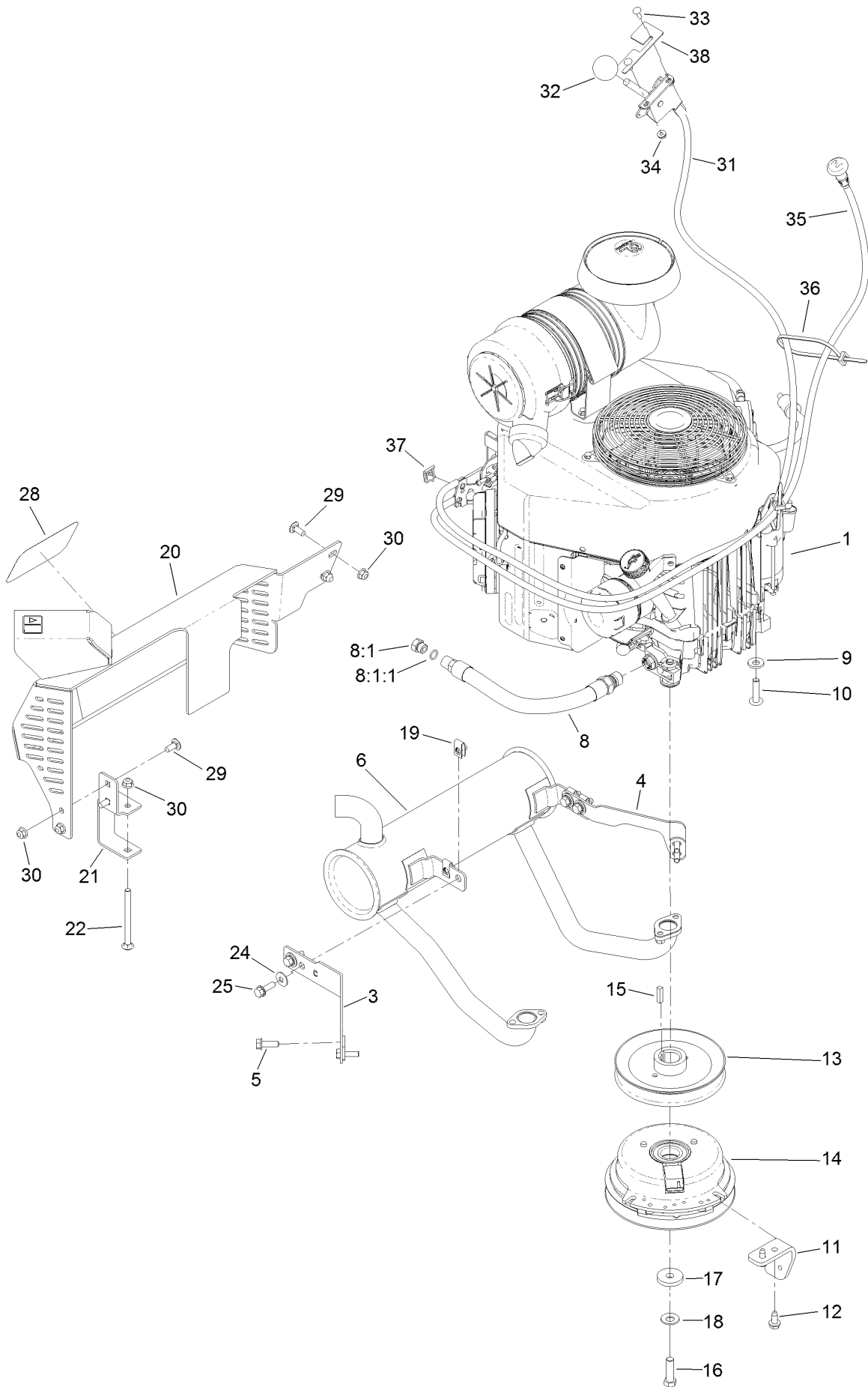
# Platform Assembly



## Platform Assembly (continued)

<i>Ref.</i>	<i>Part Number</i>	<i>Qty.</i>	<i>Description</i>	<i>Ref.</i>	<i>Part Number</i>	<i>Qty.</i>	<i>Description</i>
1	120-8499-03	1	Hinge-Pad	14	3231-2	2	Bolt-CARR
2	117-9739	1	Pad-Cushion	15	3231-27	2	Screw-CARR
3	3256-23	4	Washer-Plain	16	120-8475-01	1	Platform
4	121-7999	4	Screw-HH	17	126-7157	1	Mat-Platform
5	114-0463	4	Washer-Friction, Composite	18	114-1920-03	1	Clamp-Shield
6	133-1426	2	Knob	19	32144-70	2	Screw-HWHTF
7	116-2886	2	Slide-Bushing	20	119-8650	1	Pin-Latch
8	3253-4	2	Washer-Lock	21	114-5348	1	Spring
9	131-4535	2	Nut-Acorn	22	1-603175	1	Knob-Ball
10	111044	4	Spacer	23	132-7583	2	Bushing-Flanged
11	114-1915-01	2	Link-Pad	24	104-8301	2	Nut-HF, NI
12	3256-4	6	Washer-Flat	25	323-11	2	Screw-HH
13	3296-59	4	Nut-Lock, NI				

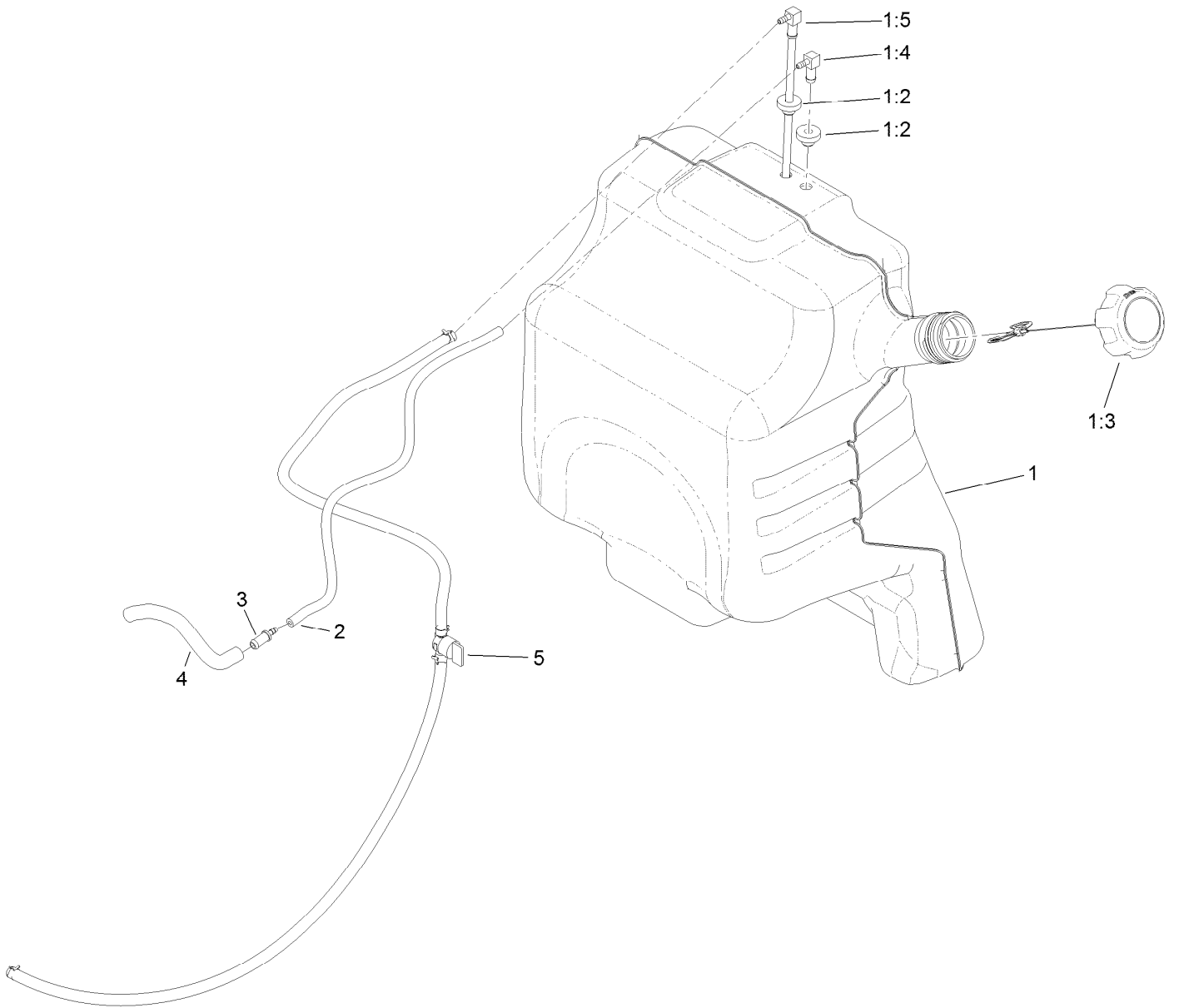
# Engine Assembly



## Engine Assembly (continued)

<i>Ref.</i>	<i>Part Number</i>	<i>Qty.</i>	<i>Description</i>	<i>Ref.</i>	<i>Part Number</i>	<i>Qty.</i>	<i>Description</i>
1	131-3519	1	Engine-Kawasaki, Fx691V	19	94-2413	4	Nut-U
3	132-1173	1	Bracket-Muffler, Front	20	131-3550	1	Muffler Guard ASM
4	132-1174	1	Bracket-Muffler, Rear	21	131-3530-03	1	Bracket-Mounting, Guard
5	33104-025	4	Screw-HHF	22	106-9758	1	Screw-CARR
6	133-4633	1	Muffler	24	3290-456	4	Washer-Belleville
8	116-4924	1	Engine Oil Drain Hose ASM	25	3234-29	4	Screw-HHF
8:1	353-508	1	Plug-HH	28	94-2579	1	Decal
8:1:1	237-42	1	O-Ring	29	3230-23	4	Bolt-CARR
9	98-5975	4	Washer-Belleville	30	104-8300	5	Nut-HF, NI
10	126-0983	4	Screw-BHTF	31	132-5152	1	Throttle ASM
11	131-3586-03	1	Stop-Clutch	32	1-603175	1	Knob-Ball
12	32144-70	2	Screw-HWHTF	33	1-807533	2	Bolt-CARR
13	120-8498	1	Pulley	34	32128-17	2	Nut-Lock, Flange
14	131-1100	1	Clutch	35	132-5140	1	Cable-Choke
15	1-807259	1	Key	36	3290-378	2	Tie-Cable
16	3212-6	1	Screw-HH	37	81-1690	1	Clamp-Cable
17	107-4136	1	Washer	38	119-1883	1	Plate-Set, Throttle
18	1-603610	1	Washer-Spring				

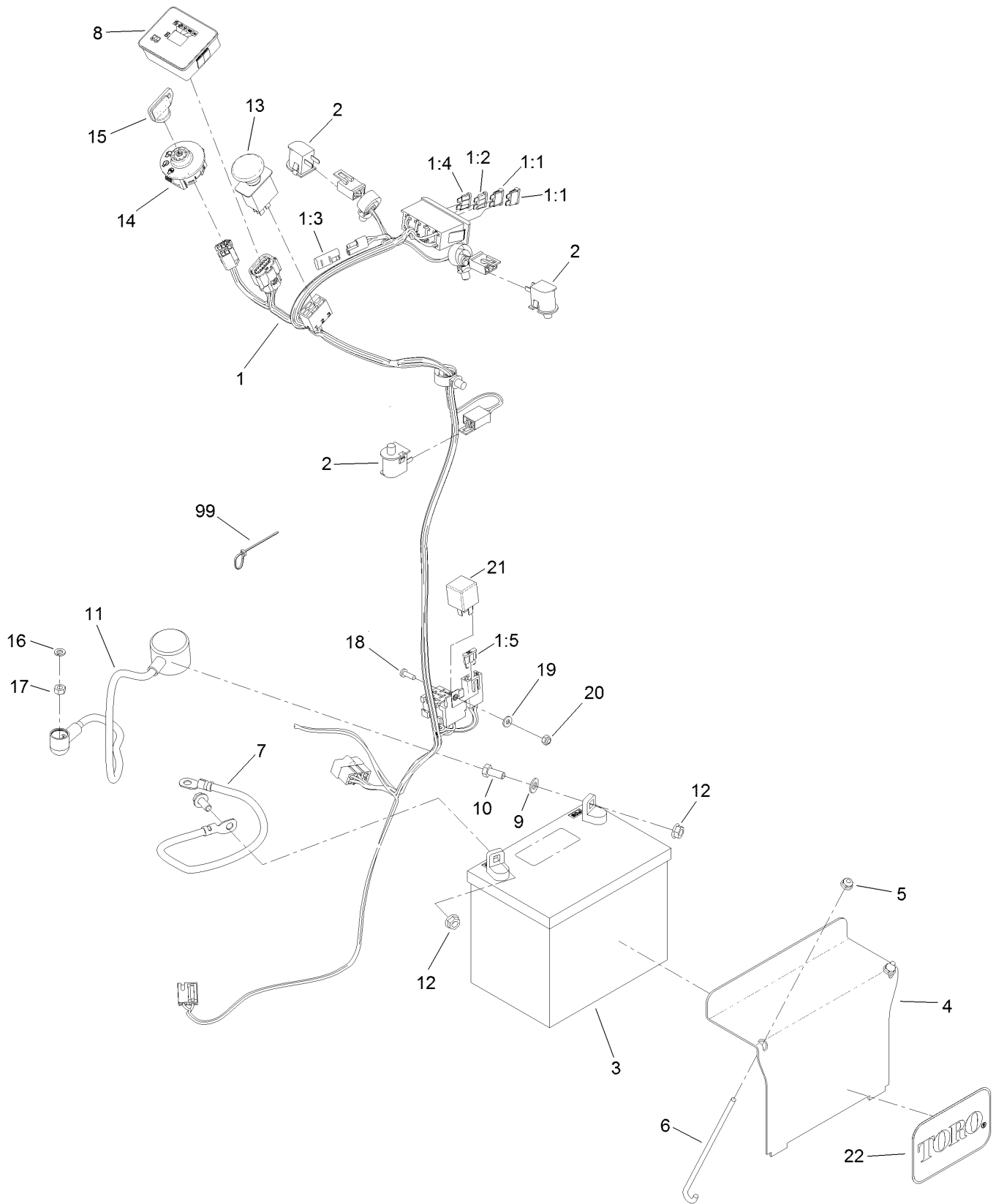
# Fuel Tank Assembly



## Fuel Tank Assembly (continued)

<i>Ref.</i>	<i>Part Number</i>	<i>Qty.</i>	<i>Description</i>	<i>Ref.</i>	<i>Part Number</i>	<i>Qty.</i>	<i>Description</i>
1	132-7560	1	Fuel Tank ASM	2	110-8255	1	Hose-Fuel
1:2	46-6560	2	Bushing	3	98-2952	1	Fitting-Straight
1:3	115-7788	1	Cap-Fuel	4	132-7576	1	Hose-Fuel
1:4	104-5228	1	Fitting-Elbow, 90 DEG	5	132-7546	1	Fuel Line ASM
1:5	132-7559	1	Fuel Tube ASM				

# Wire Harness Assembly





## Wire Harness Assembly (continued)

<i>Ref.</i>	<i>Part Number</i>	<i>Qty.</i>	<i>Description</i>	<i>Ref.</i>	<i>Part Number</i>	<i>Qty.</i>	<i>Description</i>
1	130-1845	1	Harness-Wire	10	322-3	2	Screw-HH
1:1	109355	2	Fuse-Blade, 15 Amp	11	115-3864	1	Cable-Battery, Positive
1:2	218-578	1	Fuse-Blade, 10 Amp	12	109-5715	2	Nut-HHF, Smooth
1:3	116-0053	1	Cap-Plug	13	114-0279	1	Switch-PTO, On-On
1:4	114241	1	Fuse-Blade, 7.5 Amp	14	117-2222	1	Switch-Ignition
1:5	109103	1	Fuse-Blade, 30 Amp	15	63-8360	1	Key-Ignition
2	82-2190	3	Switch-Bail	16	3253-3	1	Washer-Lock
3	104-8162	1	Battery	17	3217-5	1	Nut-Hex
4	130-6635-01	1	Bracket-Hold Down, Battery	18	3290-500	1	Screw-PPH
5	104-7201	2	Nut-HF	19	3256-14	1	Washer-Flat
6	1-633651	2	Bolt-Holddown	20	3296-2	1	Nut-Lock, NI
7	112-7063	1	Cable-Battery, Black	21	1-643275	1	Relay
8	130-6570	1	Module-Meter, Hour	22	67-1300	1	Decal
9	3256-23	2	Washer-Plain	99	3290-378	4	Tie-Cable

# Attachments and Accessories

## For 74504TE GrandStand Mower With 122cm TURBO FORCE Cutting Unit

Product Name	Model/Part
Quick Attach-Male .....	132-5193
MVP Pack .....	133-1448
Strobe Light Kit .....	133-1495
Snow Tires .....	133-4603
Recycler Kit .....	115-7466
Brake Hub Puller .....	116-6518
Speed Setting Tool .....	132-7595
Light Kit .....	133-1437
Electric Accessory Port .....	133-1438
Hydraulic Cap Lock Kit .....	136-5420
Oil Filter .....	119-5852
Trash Bag Assembly .....	133-1435
HOC Set Blocks .....	133-1439
15-Pound Cast Weight .....	112-7059-01
Harness Wire Splitter .....	121-5988
Trimmer Rack .....	133-1441
5 Gallon Bucket .....	133-2533
Stand-On Weight Kit .....	133-1428
Chute Gate Kit W/ Bag .....	133-1434
Pneumatic Castor Wheel Kit .....	137-4136
18x8.5n10 X-Tweel Turf .....	139-7890
Soft Bag (3 Bushel) .....	30104
Spark Plug .....	92-2153
Bagging Enhancement Kit .....	108-4091
Element-Filter, Air (Outer) .....	119-5944
Element-Filter, Air (Inner) .....	119-5945
Fuel Filter .....	120-2235
Blade-Lo Flow, 16.5in (6 Pack) .....	110-0415
Blade-Low Flow, 16.5in .....	107-3193-03
Blade-Mid Flow, 16.5in (6 Pack) .....	110-0418
Blade-Mid Flow, 16.5in .....	107-3194-03
Blade-Hi Flow, 16.5in (6 Pack) .....	110-0414
Blade-Hi Flow, 16.5in .....	107-3192-03
Blade-Recycler, 16.5in (6 Pack) .....	110-0416
Blade-Recycling, 16.5in .....	107-3196-03
Blade-Atomic, 16.5in (6 Pack) .....	110-0417
Blade-Atomic, 16.5in .....	107-3195-03
Blade And Belt Kit-48 In .....	132-4740
Hypr-Oil 500 (quart) .....	114-4713
Hypr-Oil 500 (gallon) .....	114-4714
Hypr-Oil 500-5 (5 gallon) .....	114-4715
Anti-Scalp Kit, 48/52 Grandstand Deck .....	133-1440
Toro Premium Fuel Treatment 12 Oz Bottle .....	131-6572
Hydro Filter Kit .....	132-4743
Hydro Oil Change Kit .....	133-1457
10w30 4-Cycle Engine Oil (32oz Bottle) .....	38280

# Attachments and Accessories (continued)

Toro 4-Cycle SAE 30 Oil (32oz Bottle) ..... 38903  
Spark Arrestor ..... 98-9099



**Count on it.**