



## TX 420

### Dingo<sup>®</sup> Compact Utility Loader

Model No. 22306—210000501 and Up

## Parts Catalog

---

### Ordering Replacement Parts

To order replacement parts, please supply: the part number, the quantity, and the description of each part desired.

### Understanding Reference Numbers

Each identified part in an illustration has a reference number. The reference number for a part also appears in the parts list, along with other information about the part.

This catalog uses two special reference number formats, one to indicate parts in a service assembly and another to indicate the quantity of a given part in an illustration.

### Service Assembly Reference Numbers

Parts in service assemblies have reference numbers in the form **a:b**. The **a** represents the reference number of the entire service assembly and the **b** represents a sequential number unique to each part within the service assembly.

For example, a wheel assembly might be identified by reference number **6**, the tire by **6:1**, the valve by **6:2**, and the wheel by **6:3**. When you order the assembly identified by reference number **6**, you receive all parts identified by reference numbers **6:1**, **6:2**, and **6:3**. However, you may also order any part individually.

Reference numbers of this type appear in illustrations and in part lists.

### Reference Numbers Indicating Quantity

In an illustration, if a reference number indicates more than one part, the reference number has the form **nX y**. The **n** represents the quantity of the part, the **X** is the multiplication symbol, and the **y** represents the reference number.

For example, in an illustration, the reference number **2X 37** means that two of the parts identified by reference number **37** are indicated.

## Contents

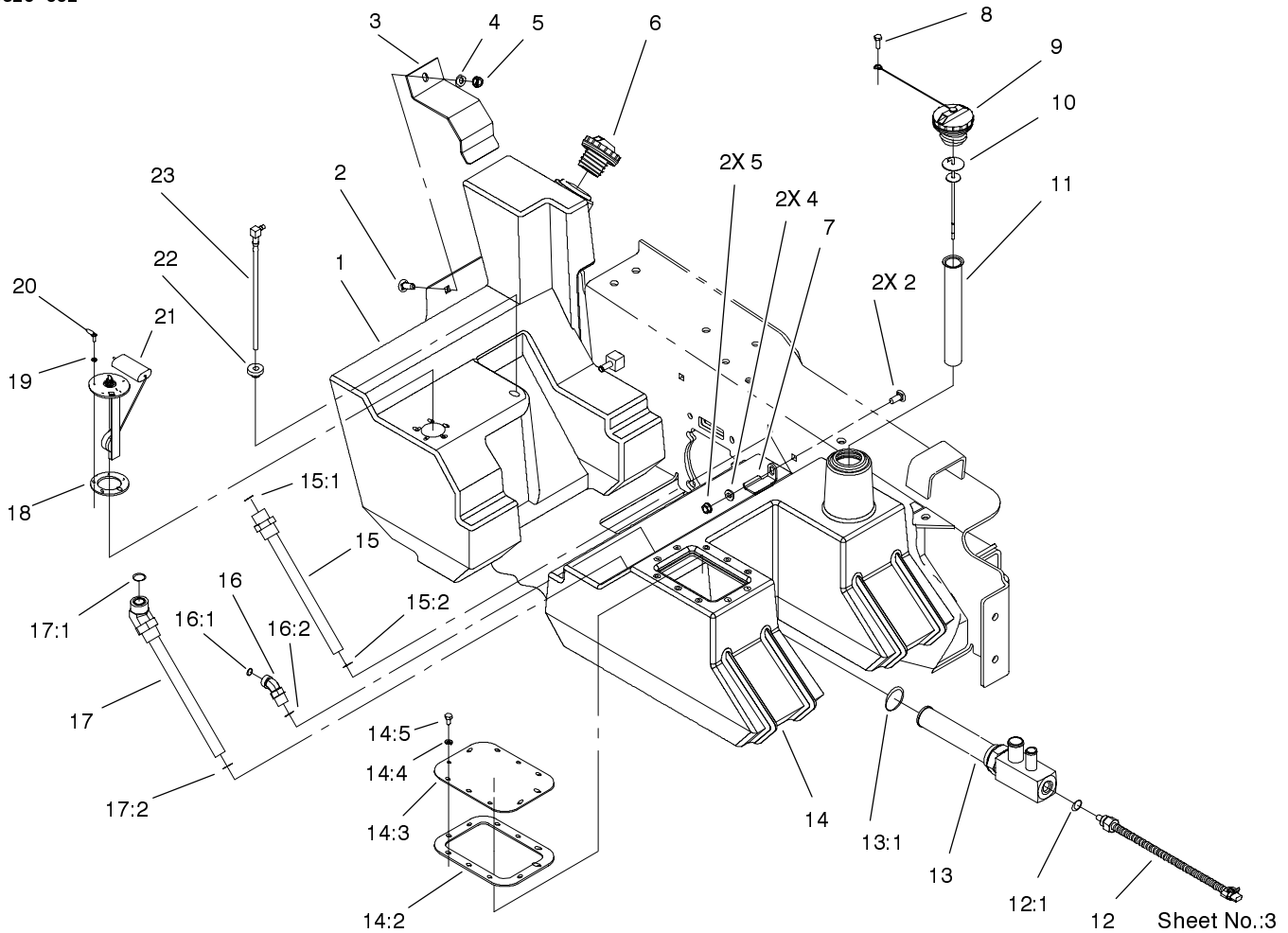
Description	Page	Description	Page
Main Chassis Assembly .....	3	Electrical System Assembly .....	25
Fuel and Hydraulic Tank Assembly .....	4	Grill Assembly .....	26
Track and Traction Assembly .....	5	Rear Access Panel Assembly .....	27
Brake Assembly .....	6	Quick Attach Assembly .....	28
Loader Tower and Drive Assembly .....	7	Hydraulic Cooler Assembly .....	29
Traction Hydraulics Assembly .....	8	Hood Assembly .....	30
Hydraulic Pump Assemblies		Electrical Schematic .....	31
98-8432 & 98-8431 .....	9	Hydraulic Schematic .....	32
Engine and Mounting Assembly .....	10	Crankshaft .....	33
Hydraulic Pump Assembly .....	11	Crankcase .....	34
Hydraulic Gear Pump Assembly No. 98-2752 .	13	Oil Pan/Lubrication .....	35
Control Panel Assembly .....	14	Head/Valve/Breather .....	36
Traction Control Assembly .....	15	Ignition/Electrical .....	37
Principal Hydraulics Assembly .....	16	Blower Housing & Baffles .....	38
One Spool Valve Assembly No. 95-3537 .....	18	Starting System .....	39
Two Spool Valve Assembly No. 95-3536 .....	19	Fuel System .....	40
Loader Arm Assembly .....	20	Engine Controls .....	41
Loader Arm Hydraulic Assembly .....	21	Air Intake/Filtration .....	42
Hydraulic Cylinder Assembly No. 95-3578 .....	23	Exhaust .....	43
Hydraulic Cylinder Assembly No. 99-6162 .....	24		

## Part Description Abbreviations

Part descriptions in this catalog may include the following abbreviations.

Abbreviation	Meaning	Abbreviation	Meaning
AR .....	as required	HYD .....	hydraulic
ASM .....	assembly	INC .....	incorporated
CARR .....	carriage	LH .....	left hand
DEG .....	degrees	NI .....	nylon insert
FH .....	flat head	PPH .....	Phillips pan head
GA .....	gauge	PTH .....	Phillips truss head
HF .....	hex flange	PTO .....	power take off
HH .....	hex head	RH .....	right hand
HHF .....	hex head flange	SFH .....	slotted fillister head
HLH .....	hex lag head	SHH .....	slotted hex head
HJ .....	hex jam	SQH .....	square head
HOC .....	height-of-cut	SHWH .....	slotted hex washer head
HS .....	hex socket	SPH .....	slotted pan head
HSBH .....	hex socket button head	SRH .....	slotted round head
HSFH .....	hex socket flat head	STD .....	standard
HSH .....	hex socket head	TAP .....	self tapping
HWH .....	hex washer head	TTH .....	Torx truss head
HWHTF .....	hex washer head thread forming	WH .....	wing head

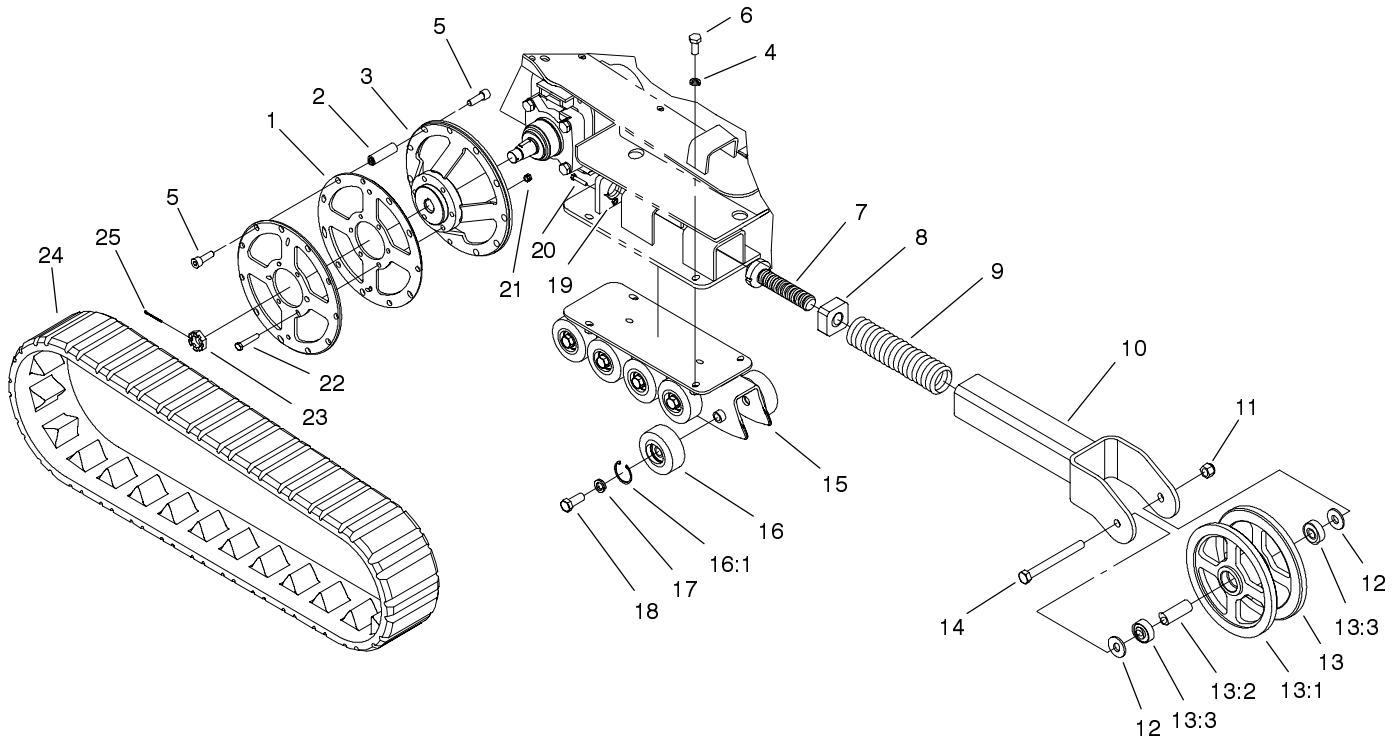




## Fuel and Hydraulic Tank Assembly

Ref. No.	Part No.	Qty.	Description
1	95-3619	1	Tank-Fuel
2	3231-22	3	Screw-CARR
3	100-1257-03	1	Clamp-Tank, Fuel
4	3256-38	3	Washer-Flat
5	3296-39	3	Nut-Lock, NI
6	93-3101	1	Cap-Fuel
7	98-2768-03	2	Clamp-Tank, Hydraulic Oil
8	321-4	1	Screw-HH
9	93-7160	1	Cap-Oil, HYD
10	95-3720	1	Dipstick ASM
11	29-0590	1	Screen-Filler
12	98-2765	1	Sensor-Temperature, 225 DEG
12:1	237-79	1	O-Ring
13	98-2766	1	Outlet Fitting ASM
13:1	237-101	1	O-Ring
14	100-6100	1	Hydraulic Tank ASM
14:2	100-1253	1	Gasket-Cover, Access
14:3	100-1254	1	Cover-Access
14:4	3253-3	10	Washer-Lock
14:5	321-2	10	Screw-HH
15	98-2757	1	Return Fitting ASM
15:1	237-65	1	O-Ring
15:2	237-81	1	O-Ring
16	340-101	1	Fitting-HYD, 90

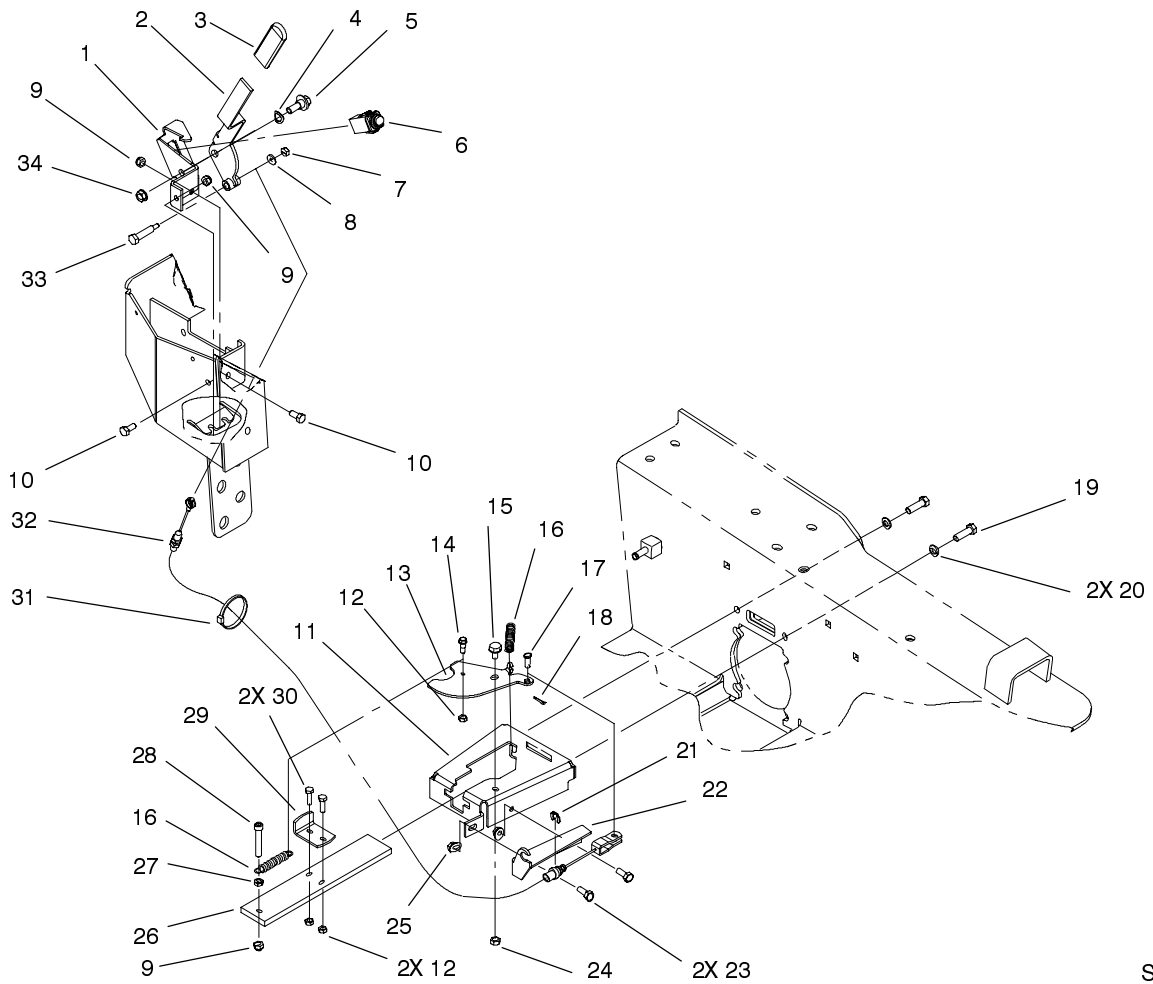
Ref. No.	Part No.	Qty.	Description
16:1	237-30	1	O-Ring
16:2	237-79	1	O-Ring
17	99-6178	1	Return Fitting ASM
17:1	237-58	1	O-Ring
17:2	237-81	1	O-Ring
18	113372	1	Gasket-Sender, Fuel
19	3253-17	5	Washer-Lock/Sp
20	3250-31	5	Screw-PPH
21	100-1298	1	Sender-Fuel
22	46-6560	1	Bushing
23	98-0185	1	Pipe Stand ASM



Sheet No.:4

## Track and Traction Assembly

Ref. No.	Part No.	Qty.	Description	Ref. No.	Part No.	Qty.	Description
1	99-6159-03	4	Plate-Wheel, Drive	22	323-10	12	Screw-HH
2	100-1286	22	Spacer-Wheel, Drive	23	99-3139	2	Nut-Wheel, Motor
3	99-6180-03	2	Drive Wheel ASM	24	98-9800	2	Track-Soucy
4	3253-7	8	Washer-Lock	25	3272-12	2	Pin-Cotter
5	3274-4	44	Screw-HSH				
6	325-5	8	Screw-HH				
7	98-9846	2	Bolt-Tensioner				
8	95-3626	2	Block-Tensioning				
9	95-3624	2	Spring-Compression				
10	98-9801-03	2	Tensioner Arm ASM				
11	3296-24	2	Nut-Lock NI				
12	3256-7	4	Washer-Flat				
13	100-6104	2	Tensioner Wheel ASM				
13:1	99-6184-03	1	Tensioner Wheel ASM				
13:2	98-9835	1	Spacer-Wheel, Tensioner				
13:3	93-4237	2	Bearing				
14	327-17	2	Screw-HH				
15	104-9966-03	2	Track Guide ASM				
16	99-6154	20	Boggy Wheel ASM				
16:1	32120-62	1	Ring-Retaining				
17	3253-8	20	Washer-Lock				
18	327-4	20	Screw-HH				
19	3296-42	2	Nut-Lock NI				
20	321-13	2	Screw-HH				
21	32153-2	12	Nut-Lock				

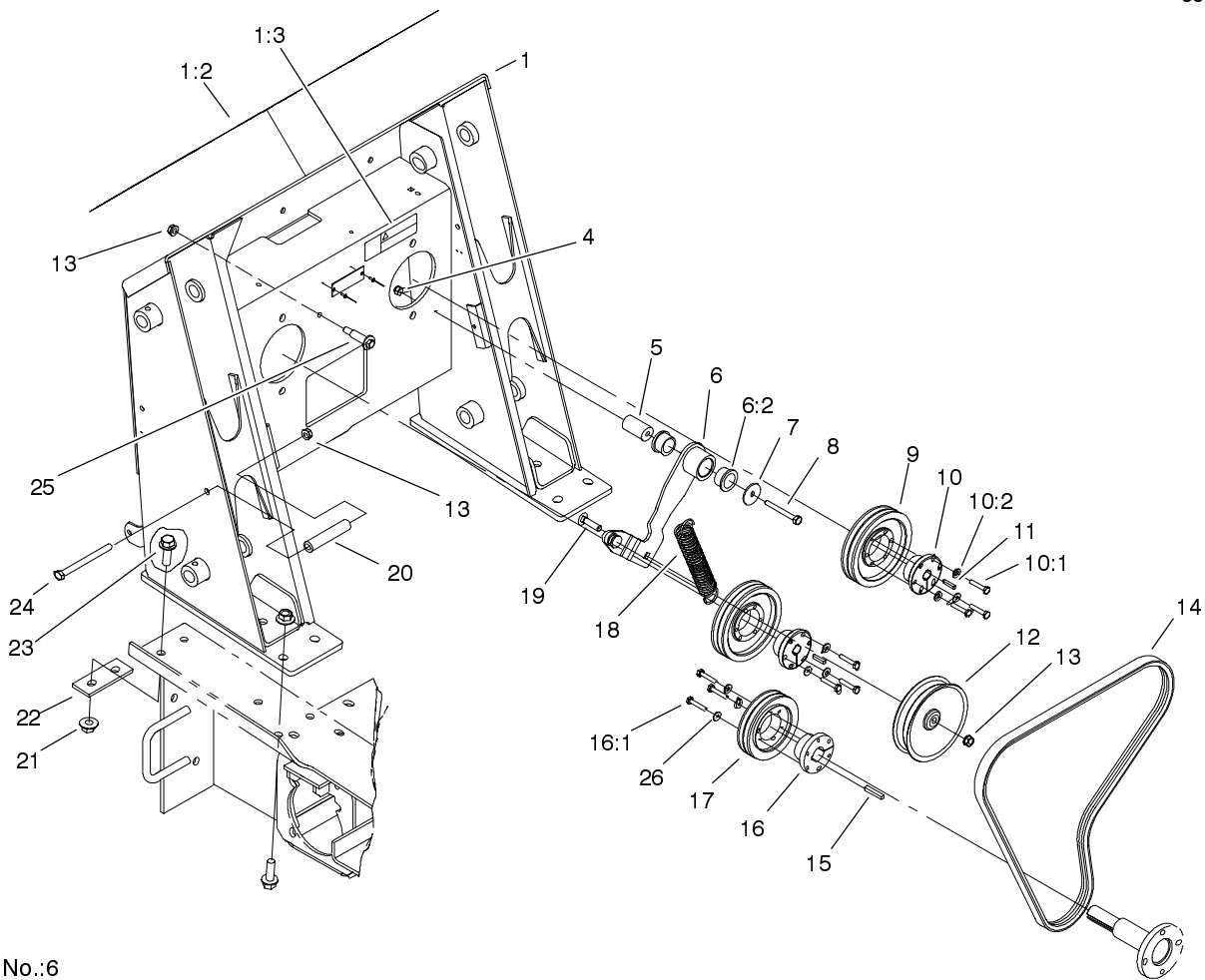


Sheet No.:5

## Brake Assembly

Ref. No.	Part No.	Qty.	Description
1	99-6153-03	1	Bracket-Switch
2	99-6151-03	1	Brake Lever ASM
3	62-9130	1	Grip-Handle
4	3290-221	1	Washer-Spring
5	93-2364	1	Bolt - Shoulder
6	100-1268	1	Switch-Plunger, Snap Mount
7	3296-42	1	Nut-Lock NI
8	3256-22	1	Washer-Flat
9	3296-29	4	Nut-Lock
10	322-3	2	Screw-HH
11	100-4200-03	2	Brake Housing ASM
12	3296-42	6	Nut-Lock NI
13	98-8443	2	Lever-Brake
14	42-3560	2	Bolt-Shoulder
15	37-8771	2	Bolt-Shoulder
16	87-4020	4	Spring - Extension
17	283-62	2	Pin-Clevis
18	3272-9	2	Pin-Cotter
19	323-7	4	Screw-HH
20	3253-5	4	Washer-Lock
21	32151-43	2	Klipring
22	98-8446-03	2	Bracket-Cable, Brake
23	322-4	4	Screw-HH
24	3296-47	2	Nut-Lock, NI
25	32128-20	4	Nut-HF

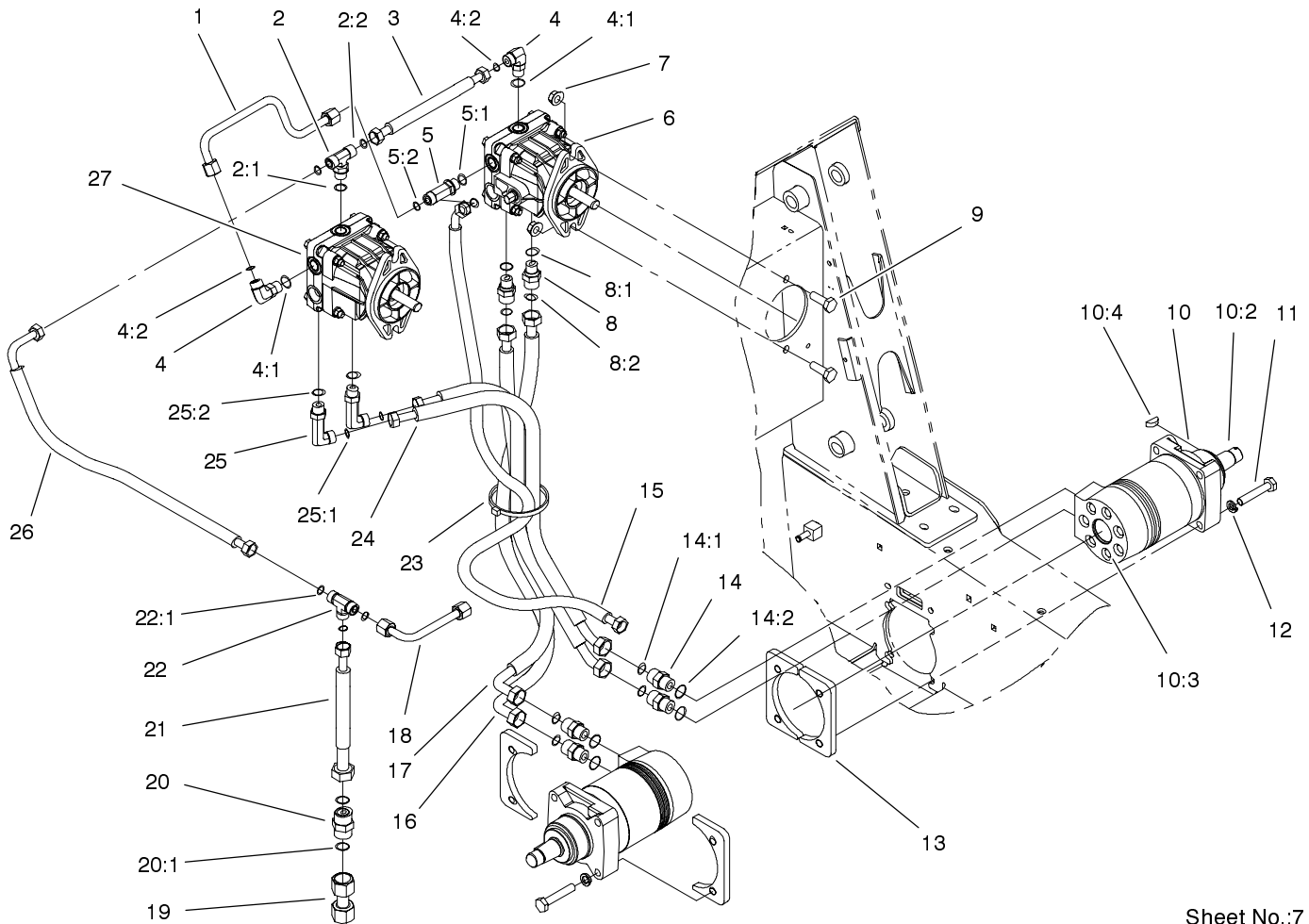
Ref. No.	Part No.	Qty.	Description
26	98-8444-03	2	Plate-Brake
27	3218-2	2	Nut-Jam
28	3274-86	2	Screw-HSH
29	98-8448	2	Stop-Brake
30	321-5	4	Screw-HH
31	3290-378	2	Tie-Cable
32	100-1283	2	Cable-Brake
33	611792	1	Bolt-Shoulder
34	3296-6	1	Nut-Lock, NI



Sheet No.:6

## Loader Tower and Drive Assembly

Ref. No.	Part No.	Qty.	Description	Ref. No.	Part No.	Qty.	Description
1	104-2843	1	Loader Tower ASM	24	323-23	2	Screw-HH
1:2	104-2842	1	Decal-Panel	25	56-6590	1	Bolt-Wheel
1:3	80-8040	1	Decal-Warning	26	3256-22	9	Washer-Flat
4	3296-29	1	Nut-Lock				
5	95-3538	1	Spacer-Mounting				
6	99-6167	1	Idler Arm ASM				
6:2	256-132	2	Bushing-Flange				
7	3256-68	1	Washer-Flat				
8	322-13	1	Screw-HH				
9	100-4207	2	Sheave				
10	100-4206	2	Bushing				
10:1	100-4208	3	Screw-HH				
11	80-6090	2	Key - Pump				
12	95-3707	1	Pulley-Idler				
13	3296-39	4	Nut-Lock, NI				
14	95-3611	1	V-Belt				
15	67-7490	1	Key				
16	61-3340	1	Bushing				
16:1	100-4208	3	Screw-HH				
17	61-3330	1	Pulley				
18	95-3535	1	Spring-Extention				
19	3231-26	1	Screw-CARR				
20	100-1271	2	Tube-Spacer				
21	32128-52	10	Locknut-Flange				
22	100-6123-01	2	Plate-Stiffener				
23	100-6116	10	Screw-HHF				



Sheet No.:7

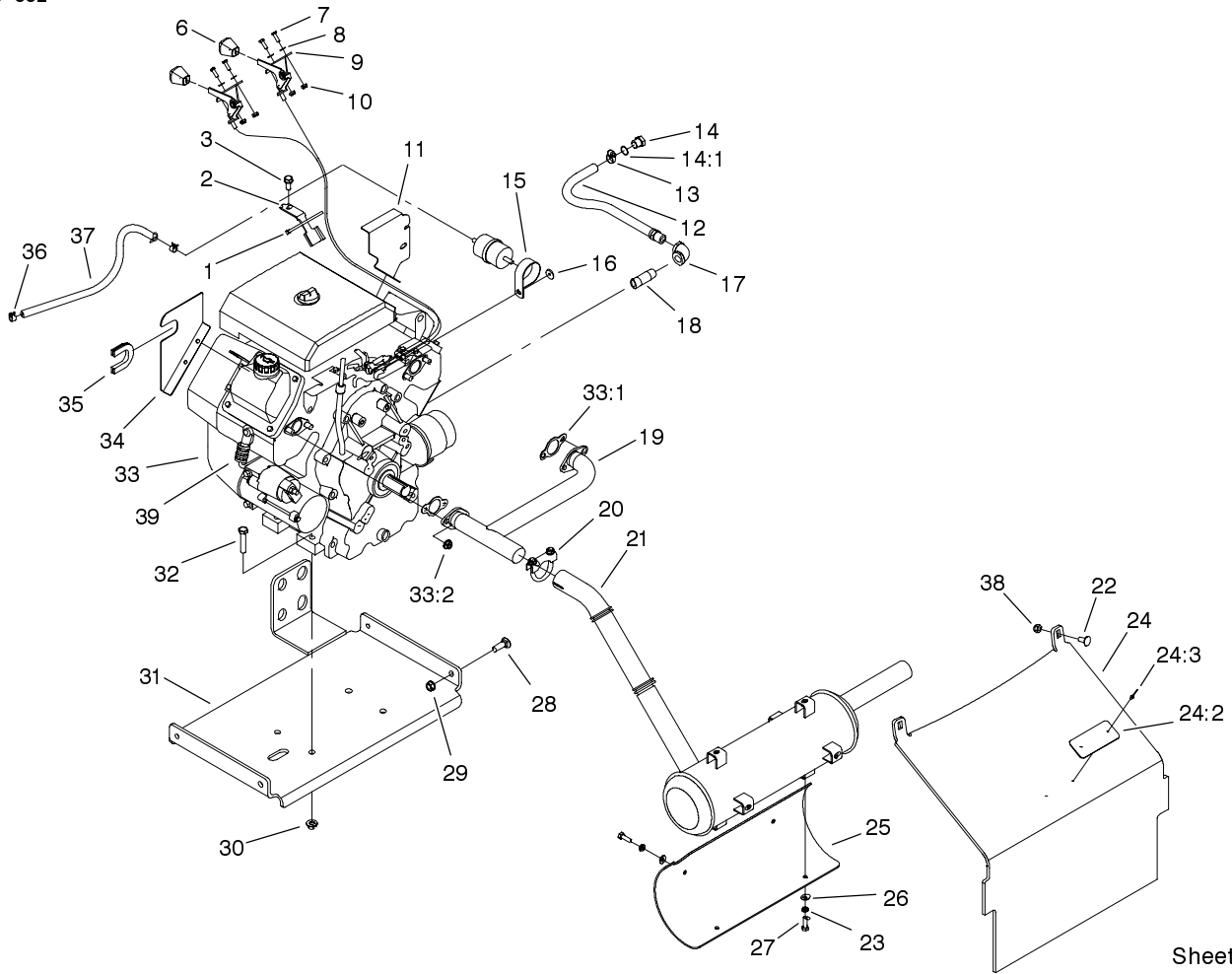
## Traction Hydraulics Assembly

Ref. No.	Part No.	Qty.	Description
1	98-0200	1	HYD Tube ASM
2	340-157	1	Fitting-HYD
2:1	237-79	1	O-Ring
2:2	237-30	2	O-Ring
3	95-3664	1	HYD Hose ASM
4	340-98	2	Fitting-HYD, 90
4:1	237-79	1	O-Ring
4:2	237-30	1	O-Ring
5	340-109	1	Fitting-HYD
5:1	237-79	1	O-Ring
5:2	237-30	2	O-Ring
6	98-8432	1	Pump-HYD, LH
7	32128-23	4	Nut-HF
8	340-155	2	Fitting-HYD
8:1	237-79	1	O-Ring
8:2	237-151	1	O-Ring
9	325-6	4	Screw-HH
10	98-2767	2	Motor-Wheel, HYD
*10:1	100-6131	1	Kit-Seal
10:2	99-3090	1	Coupling-Shaft
10:3	100-4241	7	Screw-HH
10:4	3257-42	1	Key-Woodruff
11	325-11	8	Screw-HH
12	3253-7	8	Washer-Lock
13	98-2763-03	4	Plate-Mounting, Wheelmotor

Ref. No.	Part No.	Qty.	Description
14	340-7	4	Adapter
14:1	237-65	1	O-Ring
14:2	237-80	1	O-Ring
15	98-0201	1	HYD Hose ASM
16	98-0177	1	HYD Hose ASM
17	98-0235	1	HYD Hose ASM
18	95-3517	1	HYD Tube ASM
19	100-4239	1	HYD Tube ASM
20	99-6161	1	Valve-Check, HYD
20:1	237-58	2	O-Ring
21	95-3551	1	HYD Hose ASM
22	340-102	1	Adapter
22:1	237-30	3	O-Ring
23	3334-945	1	Tie-Cable
24	98-0233	2	HYD Hose ASM
25	99-6160	2	Fitting-Elbow, 90 DEG
25:1	237-30	1	O-Ring
25:2	237-79	1	O-Ring
26	100-6130	1	HYD Hose ASM
27	98-8431	1	Pump-HYD, RH

\* Not illustrated





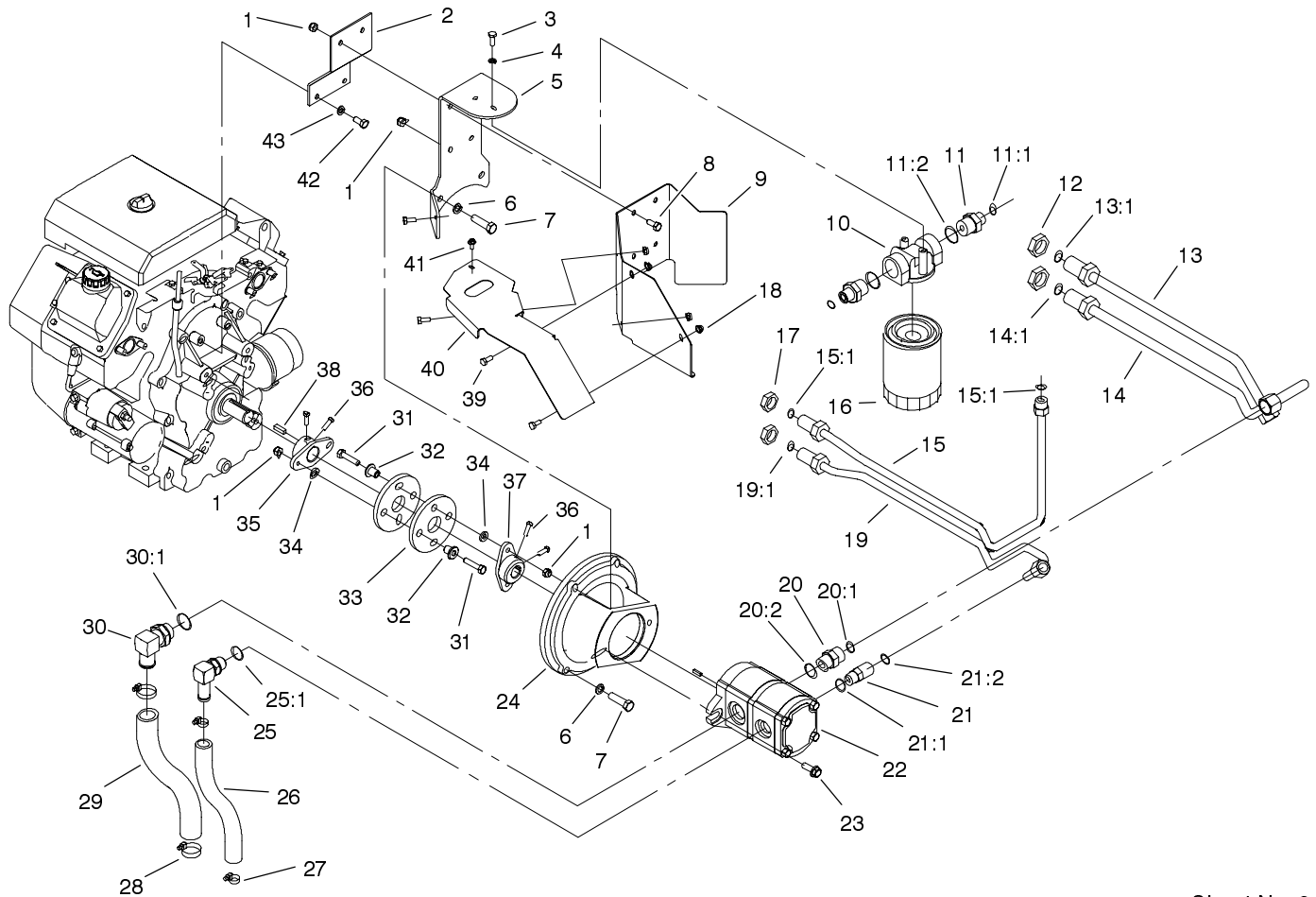
Sheet No.:8

## Engine and Mounting Assembly

Ref. No.	Part No.	Qty.	Description
1	3290-378	2	Tie-Cable
2	100-1299-03	1	Guide-Cable
3	32144-70	1	Screw-HH
6	66-0120	2	Knob
7	3290-134	4	Screw
8	3256-21	4	Washer-Flat
9	99-6173	2	Cable-Throttle
10	3296-2	4	Nut-Lock
11	100-4227-03	1	Baffle-Engine, LH
12	100-1256	1	Oil Hose ASM
13	2412-119	1	Clamp-Worm
14	353-508	1	Plug
14:1	237-42	1	O-Ring
15	2412-147	1	Clamp
16	3256-61	1	Washer-Flat
17	94-9650	1	Elbow-3/8, 90 DEG
18	289-42	1	Nipple
19	98-2761	1	Manifold-Crossover
20	2112-11	1	Clamp-Muffler
21	98-2759	1	Muffler-Exhaust
22	3230-28	2	Screw-CARR
23	3253-3	4	Washer-Lock
24	104-9985	1	Heat Shield ASM
24:2	80-8290	1	Plate-Surface, Hot
24:3	3269-31	2	Rivet-Pop
25	98-2762	1	Shield-Heat, Muffler

Ref. No.	Part No.	Qty.	Description
26	3256-22	4	Washer-Flat
27	321-5	4	Screw-HH
28	3231-28	4	Screw-CARR
29	3296-39	4	Nut-Lock, NI
30	32128-21	4	Nut-HF
31	99-6175-03	1	Engine Mounting Plate ASM
32	323-9	4	Screw-HH
☆33		1	Engine , Kohler Ch20s-64656
33:1	93-0350	2	Gasket - Exhaust
33:2	92-6780	4	Nut-HF
34	100-4228-03	1	Baffle-Engine, RH
35	100-6103	1	Seal-Strip
36	2412-98	2	Clamp
37	100-1255	1	Hose-Fuel
38	3296-29	2	Nut-Lock
39	3290-381	1	Tie-Cable

☆ Not serviced

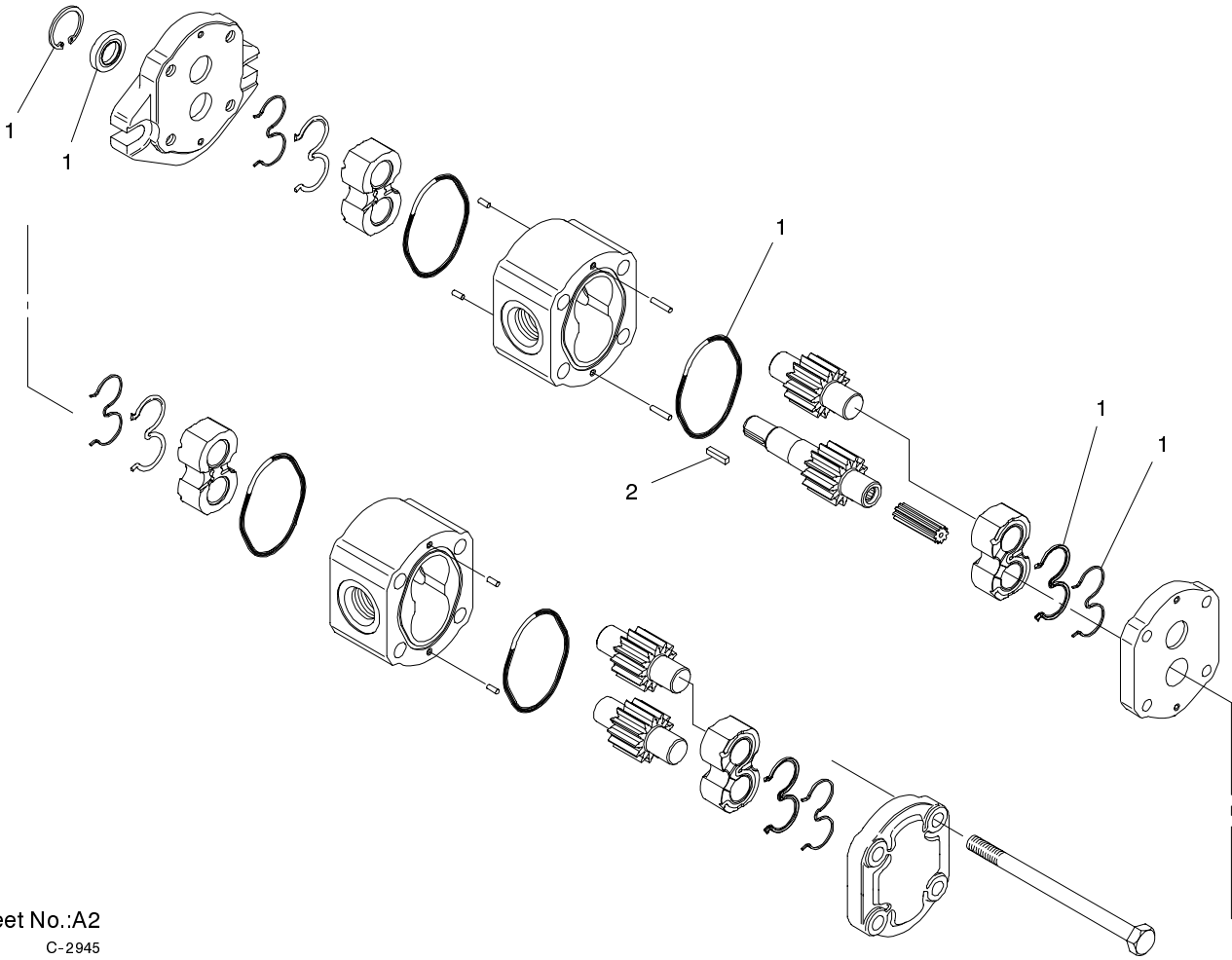


Sheet No.:9

## Hydraulic Pump Assembly

Ref. No.	Part No.	Qty.	Description	Ref. No.	Part No.	Qty.	Description
1	3296-29	8	Nut-Lock	19	98-2781	1	HYD Tube ASM
2	99-6171-03	1	Bracket-Support, Oil Filter	19:1	237-30	1	O-Ring
3	321-4	2	Screw-HH	20	340-7	1	Adapter
4	3253-3	2	Washer-Lock	20:1	237-65	1	O-Ring
5	99-6172-03	1	Bracket-Support, Oil Filter	20:2	237-80	1	O-Ring
6	3253-6	4	Washer-Lock/Sp	21	340-98	1	Fitting-HYD, 90
7	324-7	4	Screw-HH	21:1	237-79	1	O-Ring
8	322-3	4	Screw-HH	21:2	237-30	1	O-Ring
9	100-6114	1	Shield-Heat, Filter	22	98-2752	1	Pump-Gear, HYD
10	92-5821	1	Filter Head ASM	23	66-9300	2	Screw-HF
11	100-4240	2	Fitting-Adapter	24	98-2751	1	Mount - Pump
11:1	237-30	1	O-Ring	25	87-8170	1	Fitting
11:2	237-81	1	O-Ring	25:1	237-80	1	O-Ring
12	340-74	2	Locknut-Bulkhead	26	98-0156	1	Hose-HYD
13	98-2782	1	HYD Tube ASM	27	2412-129	2	Clamp-Hose
13:1	237-65	1	O-Ring	28	2412-34	2	Clamp-Hose
14	98-2783	1	HYD Tube ASM	29	98-0240	1	Hose-HYD
14:1	237-65	1	O-Ring	30	100-4202	1	Fitting-90 DEG, Hose
15	104-2847	1	HYD Tube ASM	30:1	237-81	1	O-Ring
15:1	237-30	2	O-Ring	31	322-7	4	Screw-HH
16	86-3010	2	Filter-Oil, Transmission	32	71-4411	4	Spacer
17	340-127	2	Nut-Bulkhead	33	44-2230	2	Coupling-Rubber
18	3296-16	4	Nut-Lock, NI	34	3256-23	4	Washer-Flat
				35	27-1960	1	Hub-Engine
				36	3241-6	4	Screw-SQH
				37	49-9600	1	Hub-Pump



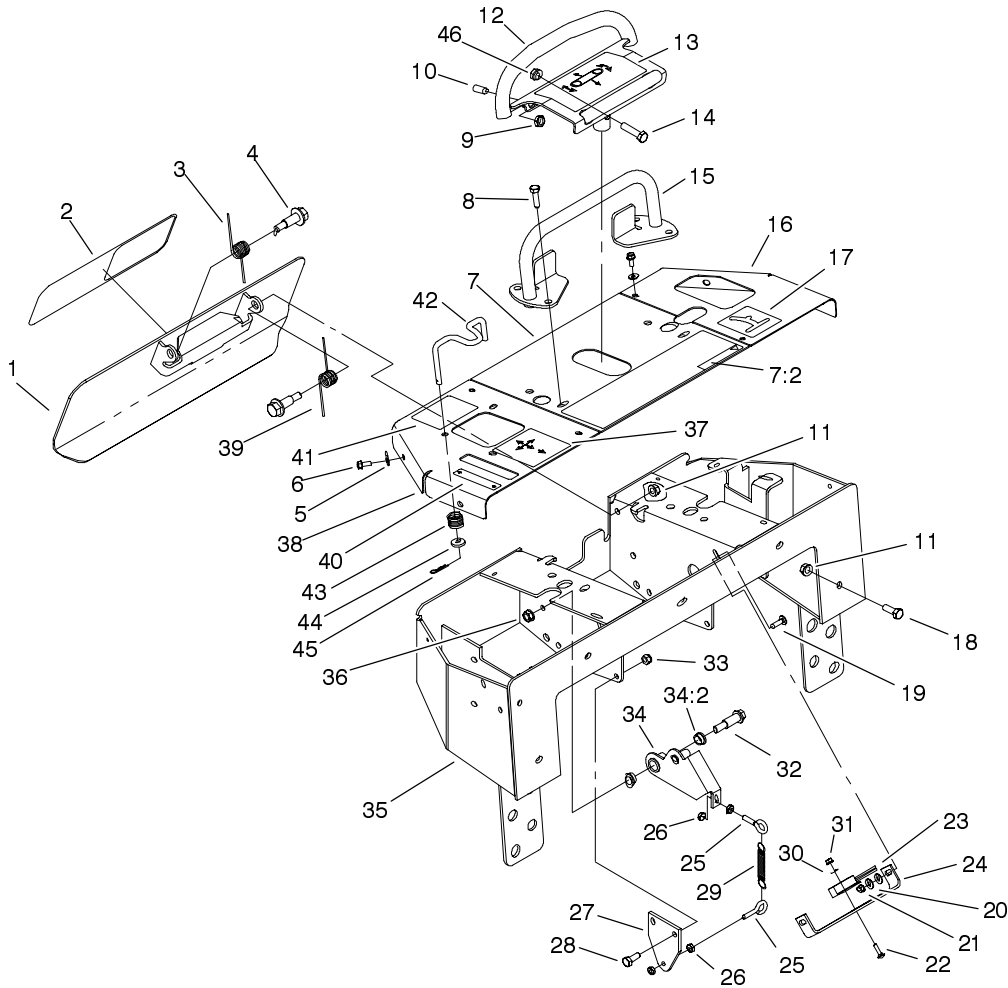


Sheet No.:A2  
C-2945

## Hydraulic Gear Pump Assembly No. 98-2752

Ref. No.	Part No.	Qty.	Description
1	100-4237	1	Kit-Seal, Pump
2	100-4238	1	Key-Square

Ref. No.	Part No.	Qty.	Description

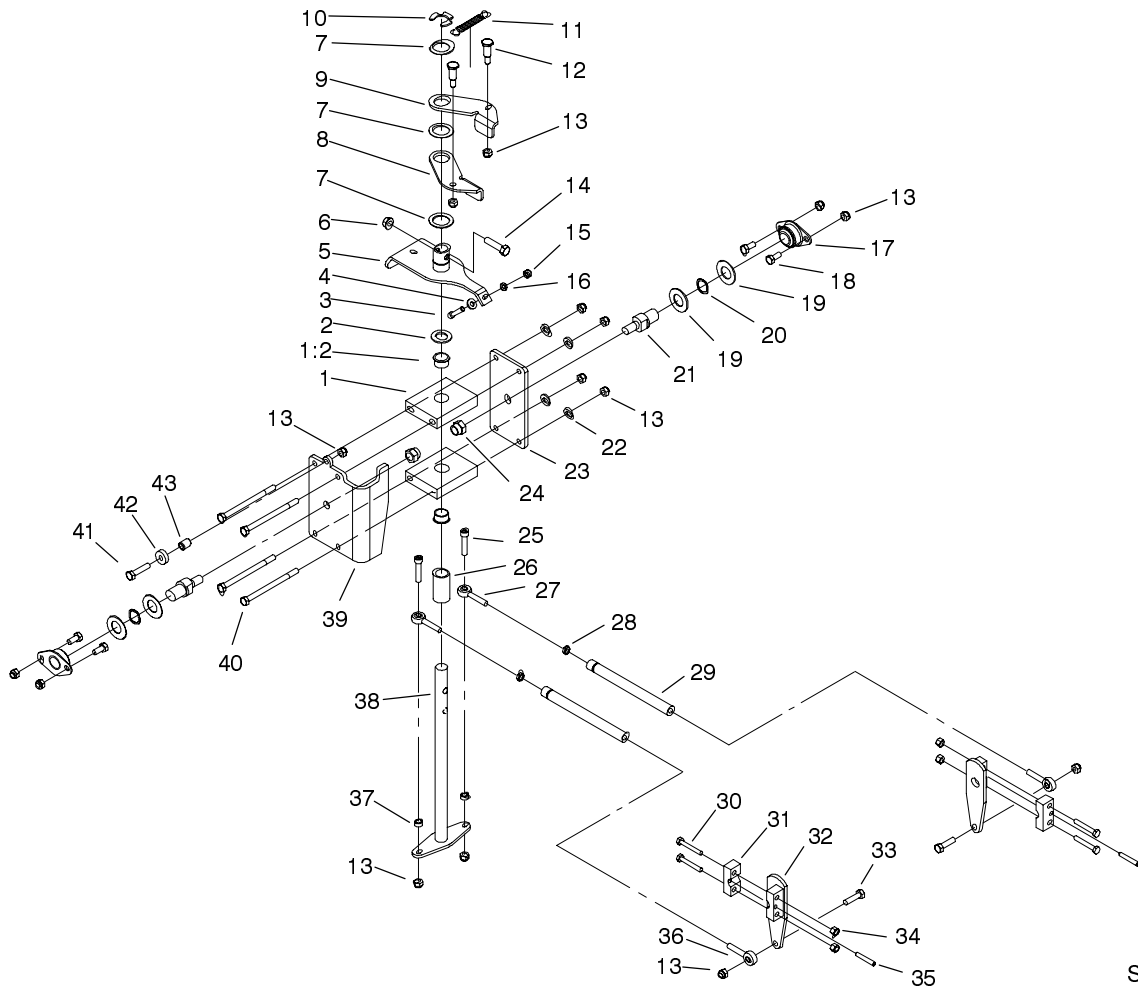


Sheet No.:10

## Control Panel Assembly

Ref. No.	Part No.	Qty.	Description
1	98-8417-03	1	Reverse Plate ASM
2	105-1217	1	Decal-Toro
3	98-8425	1	Spring-Torsion, LH
4	62-1330	2	Bolt-Shoulder
5	3256-16	8	Washer-Flat
6	32144-85	8	Screw-HH
7	100-6144	1	Center Panel ASM
7:2	100-6140	1	Decal-Danger
8	322-16	4	Screw-HH
9	3218-3	2	Nut-Jam
10	3247-6	2	Screw-Set, Socket Hd
11	3296-39	7	Nut-Lock, NI
12	104-9970-03	1	Control Handle ASM
13	100-6138	1	Decal-Traction
14	32144-102	1	Screw-HWH
15	98-8400-03	1	Reference Bar ASM
16	98-8428-01	1	Panel-LH
17	100-6136	1	Decal-Auxiliary
18	323-7	5	Screw-HH
19	3229-1	2	Screw-CARR
20	3256-22	4	Washer-Flat
21	32149-2	2	Nut
22	3229-20	2	Screw-CARR
23	100-1270	1	Switch-Proximity
24	100-1263	1	Plate-Switch
25	71-2870	2	Bolt-Eye

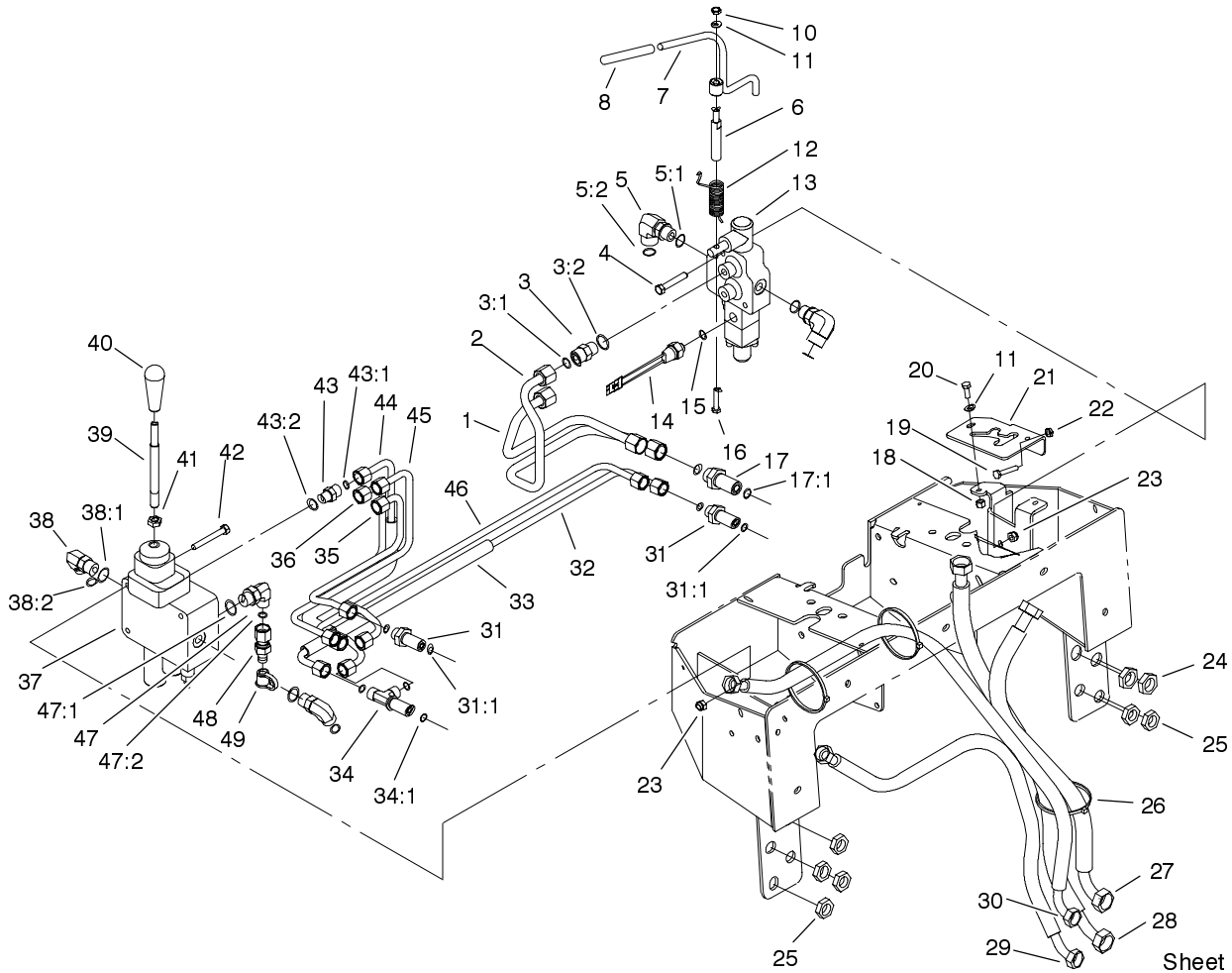
Ref. No.	Part No.	Qty.	Description
26	3217-5	4	Nut-Hex
27	100-1261-03	1	Bracket-Spring
28	322-4	2	Screw-HH
29	105-1210	1	Spring-Detent
30	3256-51	2	Washer-Flat
31	32149-7	2	Nut-Keps
32	66-0560	1	Bolt-Shoulder
33	3296-29	2	Nut-Lock
34	100-4203	1	Neutral Centering Lever ASM
34:2	256-156	2	Bushing-Flange
35	95-3540-01	1	Control Panel ASM
36	3296-6	1	Nut-Lock, NI
37	104-2837	1	Decal-Loader
38	104-2836-01	1	RH Panel ASM
39	98-8424	1	Spring-Torsion, RH
40	104-2838	1	Decal-Brake
41	104-2844	1	Decal-Interlock
42	104-2833	1	Rod-Interlock
43	85-6750	1	Spring-Control
44	88-7200	1	Washer-Flat
45	3290-307	1	Pin-Hair
46	32128-43	1	Nut-Flange



Sheet No.:11

## Traction Control Assembly

Ref. No.	Part No.	Qty.	Description	Ref. No.	Part No.	Qty.	Description
1	104-9972	2	Bearing Support Block ASM	25	3274-83	2	Screw-HSH
1:2	256-252	1	Bearing-Flange	26	104-9974	1	Spacer-Pivot, Rod
2	257-8	1	Washer-Thrust	27	2411-52	2	Bearing - Rod End, RH
3	3274-51	1	Screw-HSH	28	3220-2	2	Nut
4	3256-22	1	Washer-Flat	29	95-3711	2	Rod-Linkage
5	104-9968	1	Pivot Lever ASM	30	321-10	4	Screw-HH
6	3296-39	1	Nut-Lock, NI	31	98-8434	2	Clamp-Traction
7	3256-42	3	Washer-Flat	32	98-8433	2	Pump Lever ASM
8	98-8407	1	Lever-Return, RH	33	322-6	2	Screw-HH
9	98-8408	1	Lever-Return, LH	34	3296-8	4	Nut-Lock NI
10	32151-91	1	Ring-Retaining	35	100-6148	2	Pin-Spring, Metric
11	105-1210	1	Spring-Detent	36	2411-53	2	Bearing - Rod End, LH
12	63-2650	2	Screw-Shoulder	37	92-3133	2	Spacer-Lever, Traction
13	3296-29	15	Nut-Lock	38	98-8411	1	Drive Rod ASM
14	323-8	1	Screw-HH	39	104-9976-03	1	Bracket-Pivot, RH
15	3217-5	1	Nut-Hex	40	322-38	4	Screw-HH
16	3253-3	1	Washer-Lock	41	322-7	1	Screw-HH
17	68-2970	2	Bushing	42	251-259	1	Bearing
18	322-3	4	Screw-HH	43	88-7450	1	Spacer-Lever, Control
19	3256-39	4	Washer-Flat				
20	95-3703	2	Washer-Spring, Wave				
21	95-3684	2	Shaft-Arm, Pivot				
22	3256-23	4	Washer-Flat				
23	104-9975-03	1	Bracket-Pivot, LH				
24	3296-23	2	Nut-Lock, NI				

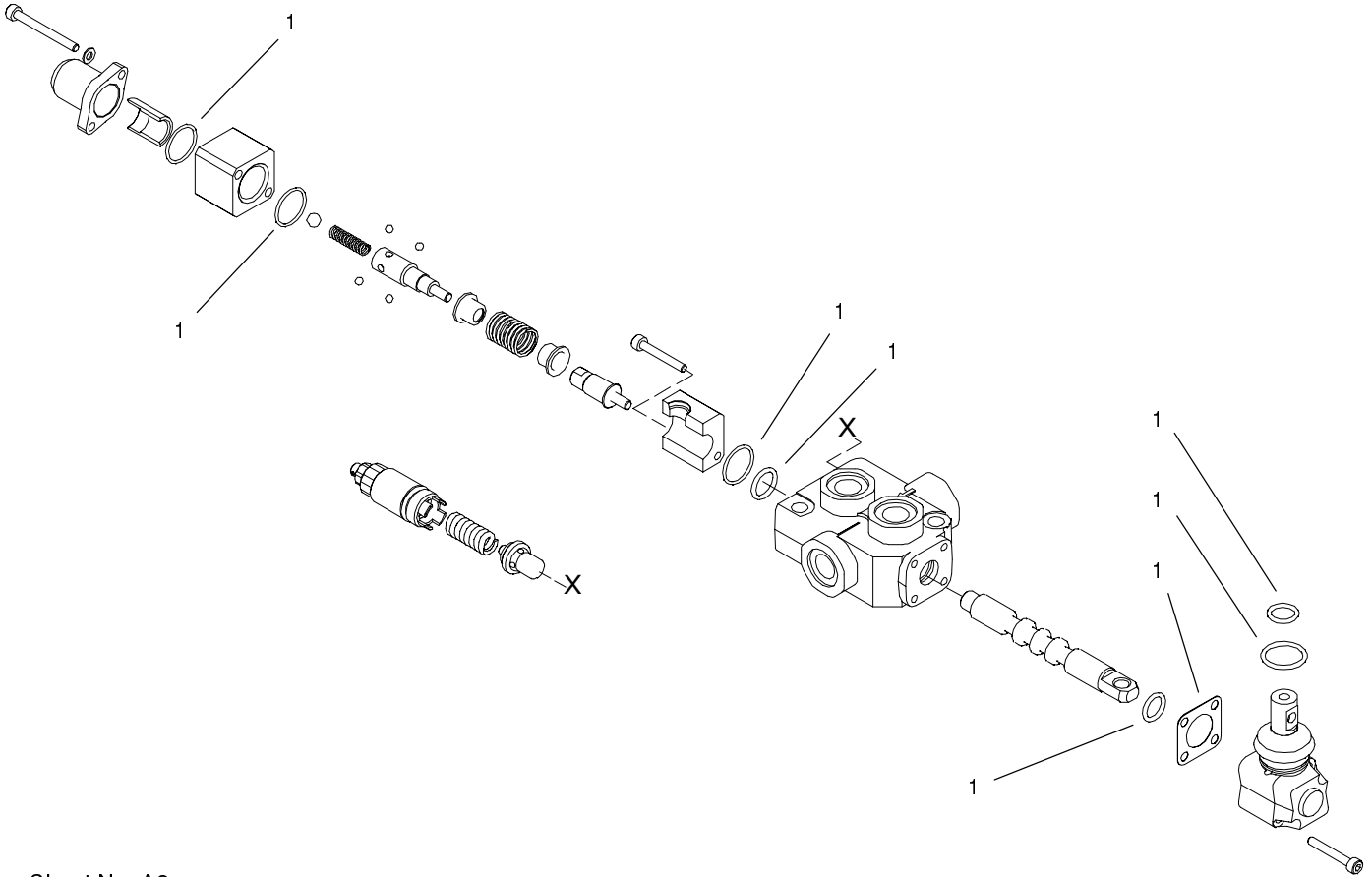


## Principal Hydraulics Assembly

Ref. No.	Part No.	Qty.	Description
1	98-2791	1	HYD Tube ASM
2	98-2790	1	HYD Tube ASM
3	340-4	2	Adapter
3:1	237-30	1	O-Ring
3:2	237-79	1	O-Ring
4	322-11	2	Screw-HH
5	340-153	2	Fitting-HYD
5:1	237-79	1	O-Ring
5:2	237-151	1	O-Ring
6	104-2827	1	Spacer-Hiflo
7	100-4246	1	Auxiliary Lever ASM
8	92-6798	1	Cap-Rod, Tilt
10	3296-42	1	Nut-Lock NI
11	3256-16	3	Washer-Flat
12	100-6129	1	Spring-Torsion
13	104-2831	1	Valve-1 Spool
14	72-4310	1	Switch
15	237-42	1	O-Ring
16	48-7740	1	Screw
17	340-161	2	Fitting-Bulkhead
17:1	237-30	2	O-Ring
18	3296-8	2	Nut-Lock NI
19	321-9	1	Screw-HH
20	321-4	2	Screw-HH
21	100-6126-01	1	Auxiliary Stop ASM
22	3218-1	1	Nut-Jam

Ref. No.	Part No.	Qty.	Description
23	3296-29	5	Nut-Lock
24	340-127	2	Nut-Bulkhead
25	340-70	6	Locknut-Bulkhead
26	3290-378	3	Tie-Cable
27	104-9961	1	HYD Hose ASM
28	98-0203	1	HYD Hose ASM
29	95-3737	1	HYD Hose ASM
30	95-3738	1	HYD Hose ASM
31	340-71	4	Fitting-Straight, Bulkhead
31:1	237-22	2	O-Ring
32	98-2786	1	HYD Tube ASM
33	100-1287	2	Conduit-Convolutod
34	340-68	2	Fitting-Tee, Bulkhead
34:1	237-22	3	O-Ring
35	98-2789	1	HYD Tube ASM
36	98-2785	1	HYD Tube ASM
37	95-3536	1	Valve-2 Spool
38	340-98	2	Fitting-HYD, 90
38:1	237-79	1	O-Ring
38:2	237-30	1	O-Ring
39	95-3569	1	Shaft-Handle, Lift/Tilt
40	98-0152	1	Knob-Tapered
41	51-2070	1	Nut
42	322-12	3	Screw-HH
43	340-2	4	Adapter



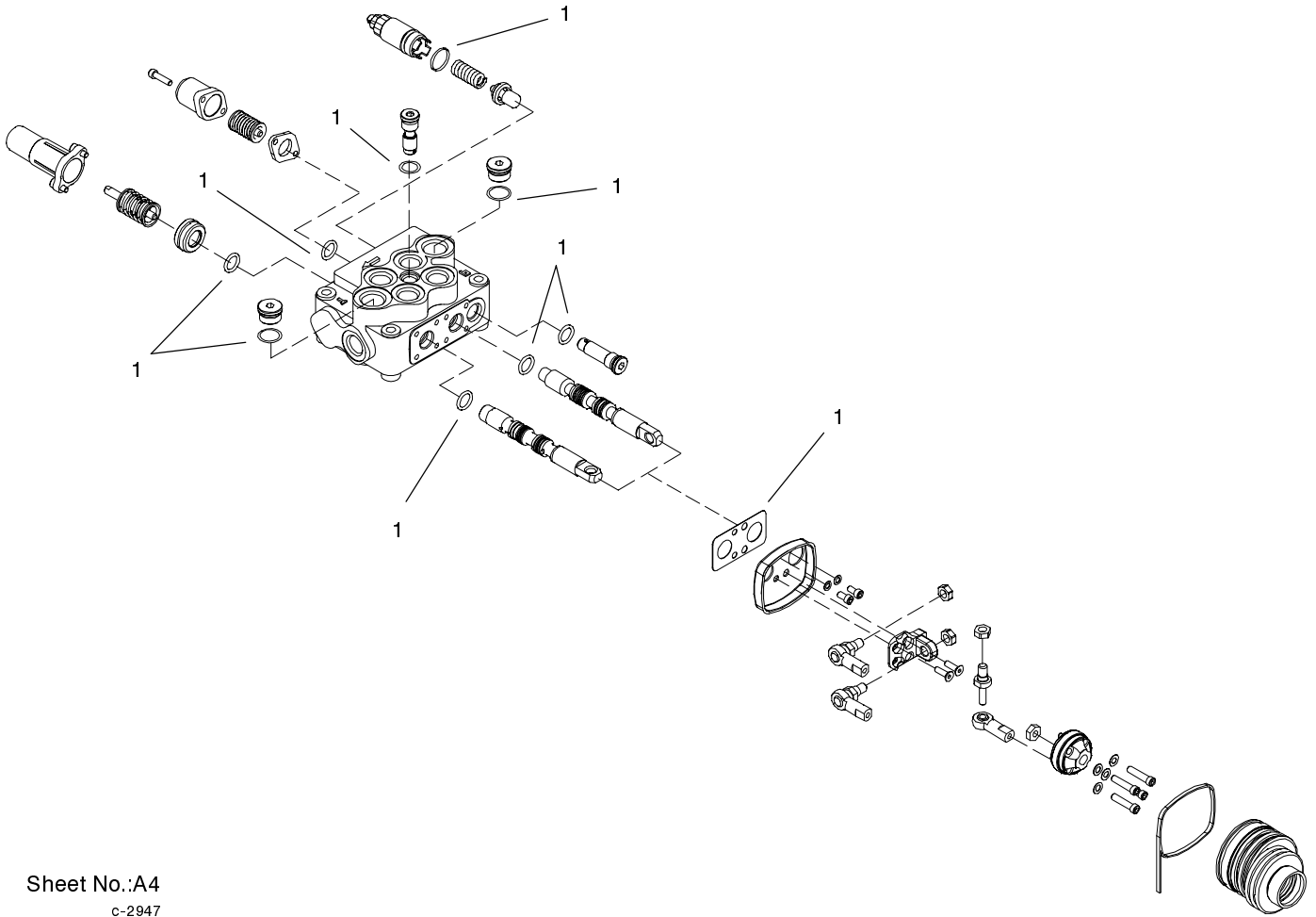


Sheet No.:A3  
C-2946

## One Spool Valve Assembly No. 104-2831

Ref. No.	Part No.	Qty.	Description
1	99-4391	1	Kit-Seal

Ref. No.	Part No.	Qty.	Description
----------	----------	------	-------------



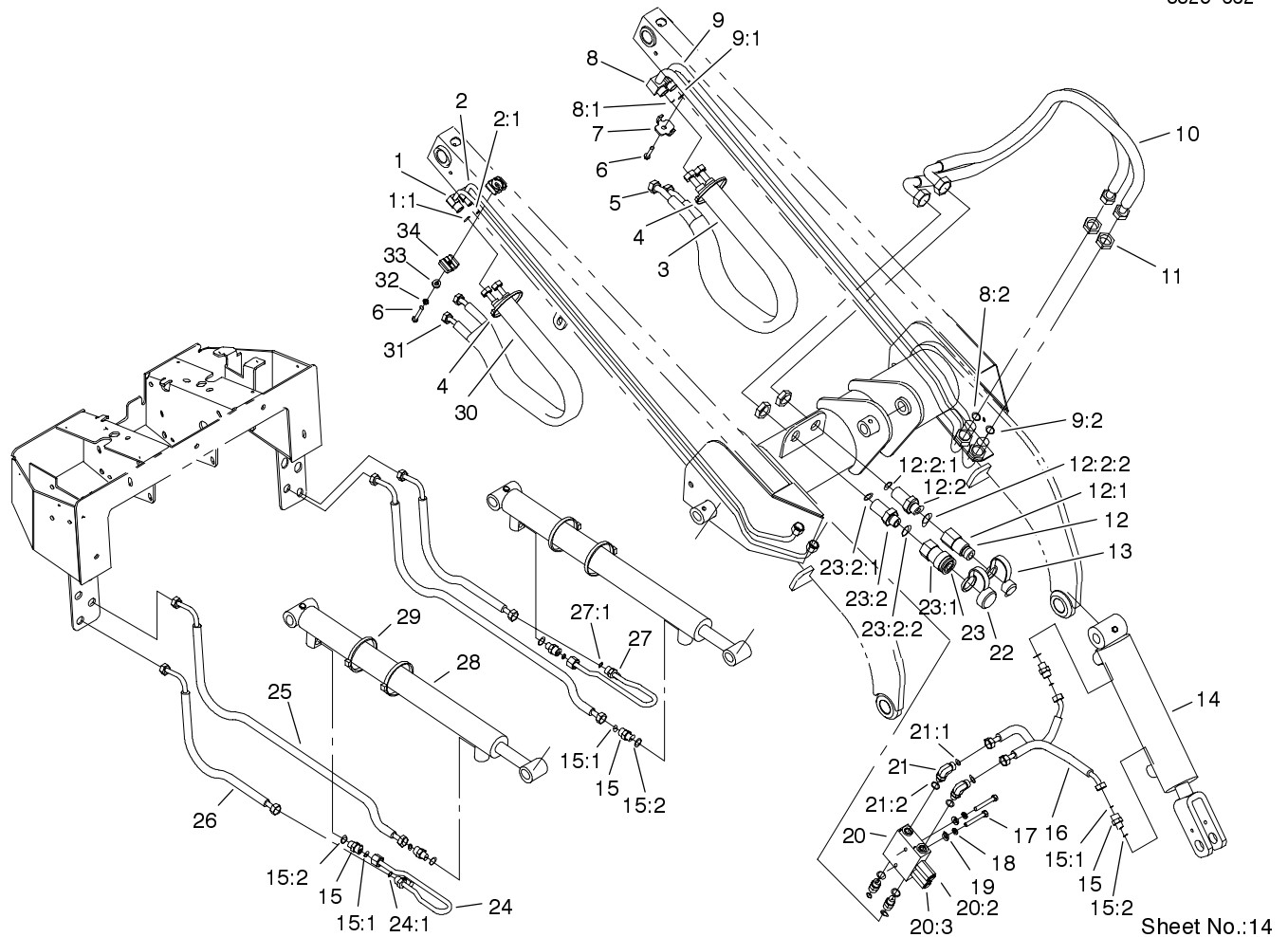
Sheet No.:A4  
c-2947

## Two Spool Valve Assembly No. 95-3536

Ref. No.	Part No.	Qty.	Description
1	100-4249	1	Kit-Seal

Ref. No.	Part No.	Qty.	Description
----------	----------	------	-------------





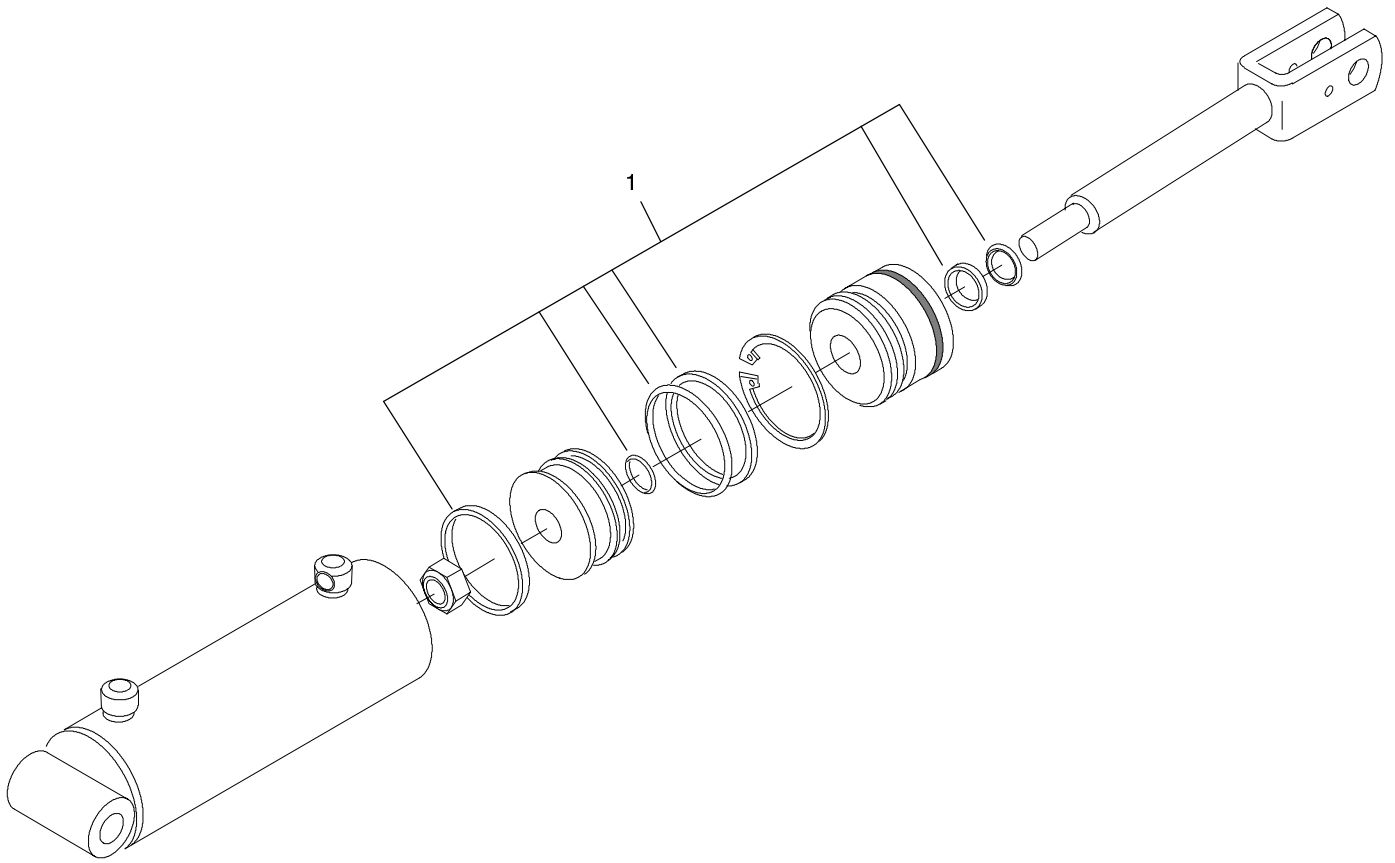
Sheet No.:14

## Loader Arm Hydraulic Assembly

Ref. No.	Part No.	Qty.	Description	Ref. No.	Part No.	Qty.	Description
1	104-9965	1	HYD Tube ASM	15:1	237-22	2	O-Ring
1:1	237-22	1	O-Ring	15:2	237-42	2	O-Ring
2	104-9964	1	HYD Tube ASM	16	98-0207	2	HYD Hose ASM
2:1	237-22	1	O-Ring	17	322-10	2	Screw-HH
3	100-6128	1	Sleeve-Protective	18	3253-4	2	Washer-Lock
4	3290-378	2	Tie-Cable	19	3256-23	2	Washer-Flat
5	98-0242	2	HYD Hose ASM	20	100-4205	1	Valve-Relief, Crossover
6	32144-110	2	Screw-HWH	*20:1	100-4219	2	Kit-Seal, Buma
7	98-0237-03	1	Plate-Clamp, Tube	20:2	100-4220	1	Cartridge-Relief
8	104-9962	1	HYD Tube ASM	20:3	100-4221	1	Cartridge-Relief
8:1	237-30	1	O-Ring	21	340-77	2	Fitting-90
8:2	237-65	1	O-Ring	21:1	237-22	1	O-Ring
9	104-9963	1	HYD Tube ASM	21:2	237-42	1	O-Ring
9:1	237-30	1	O-Ring	22	100-8816	1	Cap-Dust, Coupler
9:2	237-65	1	O-Ring	23	100-4747	1	Bulkhead Coupler ASM
10	99-6193	2	HYD Hose ASM	23:1	96-1275	1	Coupler-Face, Flush
11	340-74	4	Locknut-Bulkhead	23:2	100-4236	1	Fitting-Adapter, Bulkhead
12	100-4748	1	Bulkhead Nipple ASM	23:2:1	237-65	1	O-Ring
12:1	96-1276	1	Nipple-Face, Flush	23:2:2	237-80	1	O-Ring
12:2	100-4236	1	Fitting-Adapter, Bulkhead	24	100-1258	1	HYD Tube ASM
12:2:1	237-65	1	O-Ring	24:1	237-22	1	O-Ring
12:2:2	237-80	1	O-Ring	25	98-0217	2	HYD Hose ASM
13	100-8815	1	Cap-Dust, Nipple	26	98-0216	2	HYD Hose ASM
14	95-3578	1	Cylinder-Tilt				
15	340-2	8	Adapter				

\* Not illustrated



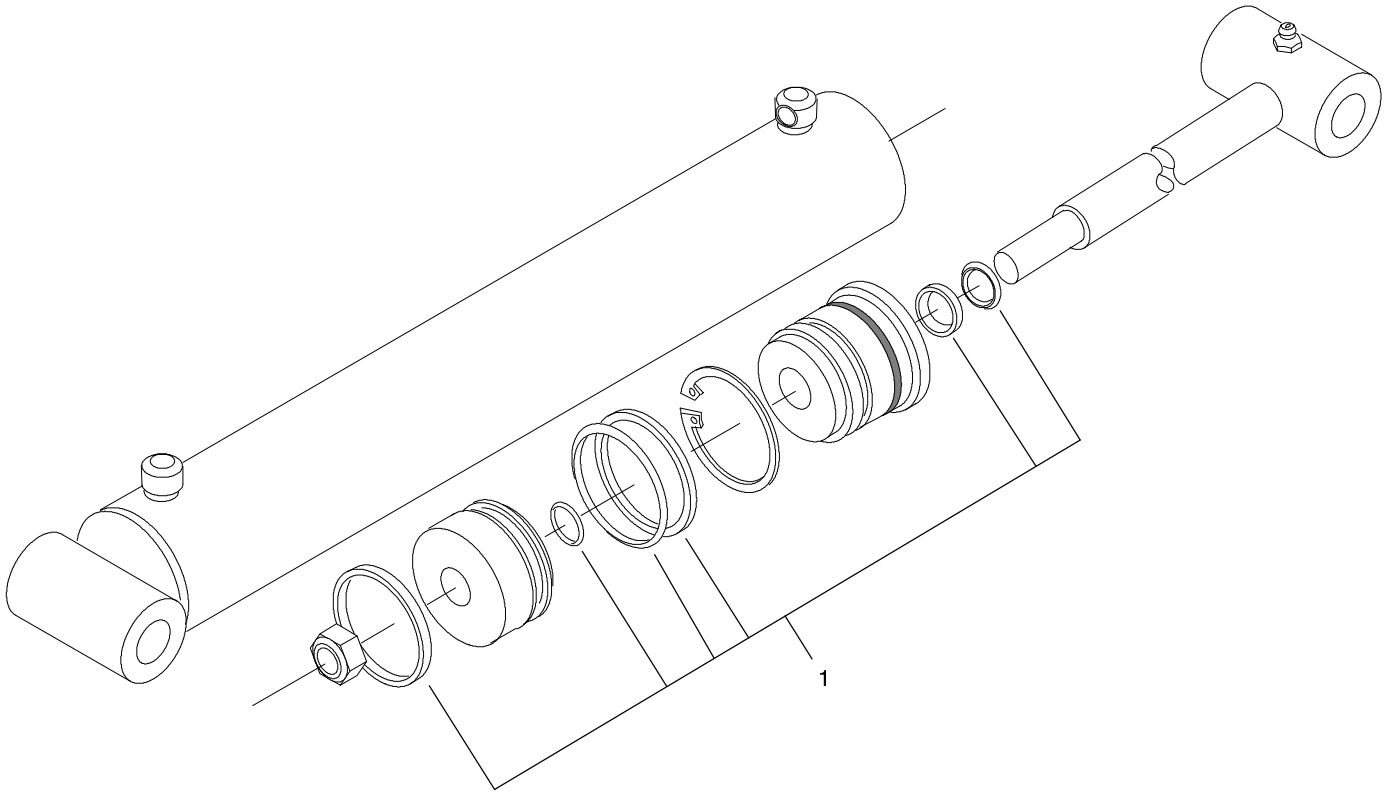


Sheet No.:A5  
C-3618

## Hydraulic Cylinder Assembly No. 95-3578

Ref. No.	Part No.	Qty.	Description
1	100-6108	1	Kit-Seal

Ref. No.	Part No.	Qty.	Description

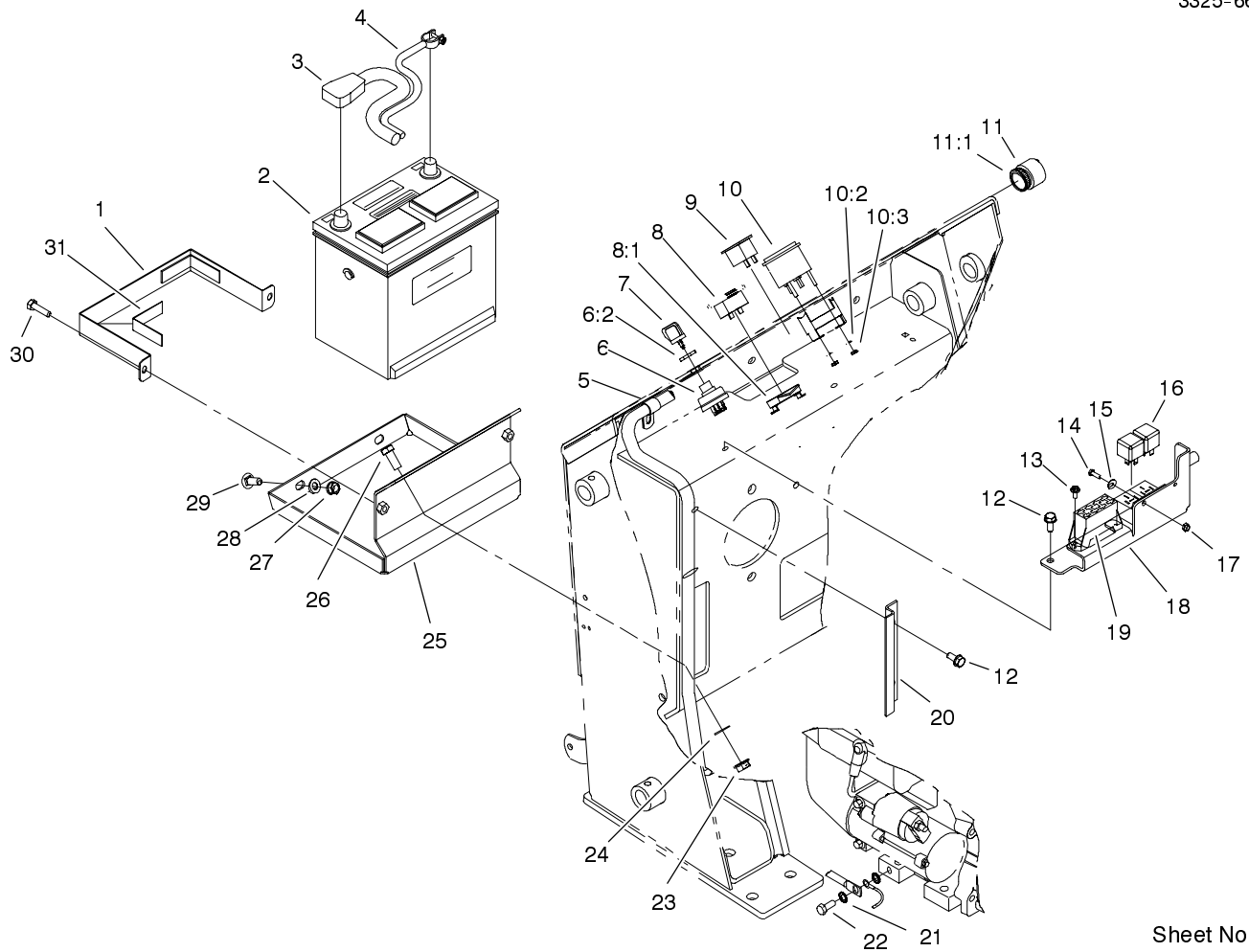


Sheet No.:A6  
C-3619

### Hydraulic Cylinder Assembly No. 99-6162

Ref. No.	Part No.	Qty.	Description
1	100-6107	1	Kit-Seal

Ref. No.	Part No.	Qty.	Description
----------	----------	------	-------------



Sheet No.:15

## Electrical System Assembly

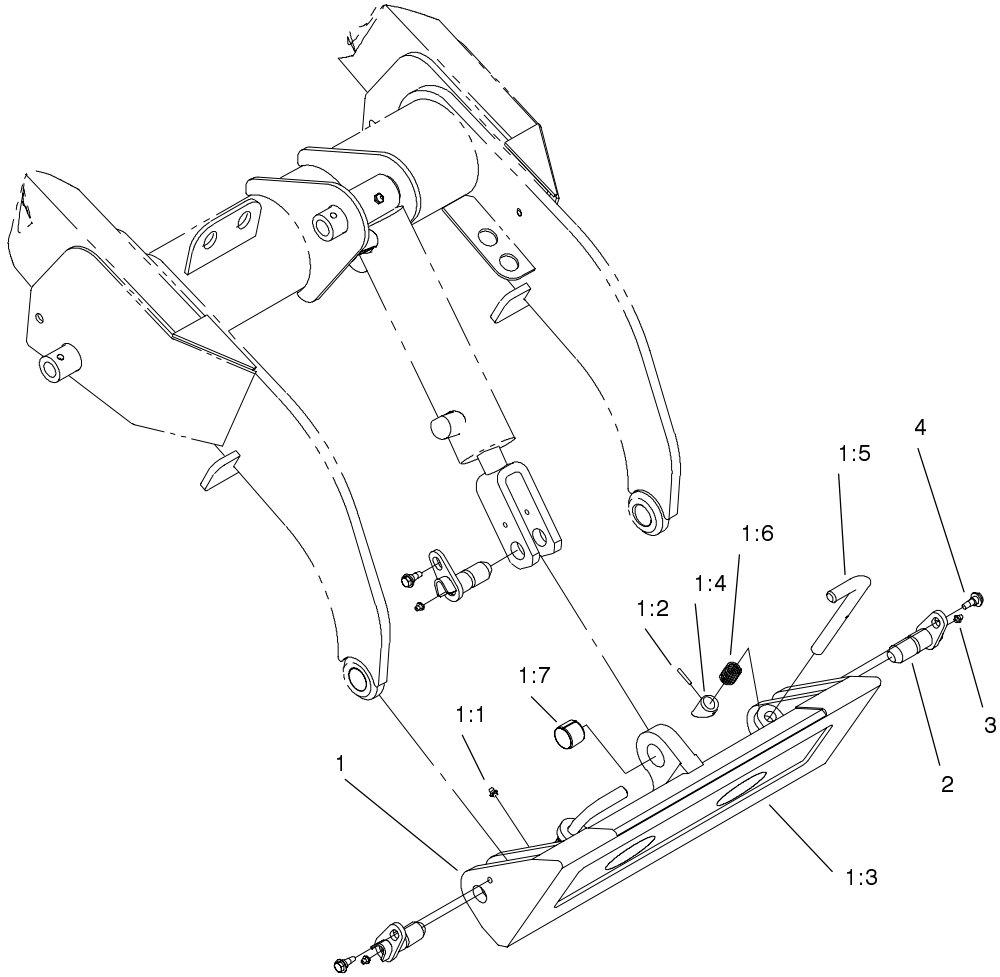
Ref. No.	Part No.	Qty.	Description
1	98-2795-03	1	Bracket-Clamp, Battery
2	104-9979	1	Battery (Dry)
3	99-6185	1	Cable-Battery, Positive
4	99-6186	1	Cable-Battery, Negative
5	2412-39	1	R-Clamp
6	88-9830	1	Switch-Ignition
6:2	218-461	1	Nut-HH
7	63-8360	1	Key-Ignition
8	104-7427	1	Hourmeter-Inductive, Round
8:1	104-4234	1	Clip-Mounting, Hourmeter
9	104-2839	1	Light-Temp, Oil
10	66-2940	1	Gauge-Fuel
10:2	3254-1	2	Washer-Lock/Int
10:3	3217-27	2	Nut-Hex
11	80-9330	1	Alarm - Audio
11:1	104-5107	1	Nut-Plastic, Knurled
12	32144-70	4	Screw-HH
13	12-5450	2	Screw
14	3290-134	2	Screw
15	3256-49	2	Washer-Flat
16	98-7249	2	Relay

Ref. No.	Part No.	Qty.	Description
17	3296-2	2	Nut-Lock
18	100-1291-03	1	Fuse/Relay Bracket ASM
19	104-7412	1	Harness-Wire
*19:1	114594	1	Fuse-10 Amp
*19:2	109102	1	Fuse-25 Amp
*19:3	NN10277	1	Fuse-30 Amp
*19:4	109355	1	Fuse-15 Amp
20	100-6117-01	1	Shield-Wiring
21	3255-8	2	Washer-Lock/Ext
22	33104-020	1	Screw-HHF
23	32128-42	2	Nut-HF
24	3256-4	2	Washer-Flat
25	98-2793-03	1	Battery Tray ASM
26	324-4	2	Screw-HH
27	3296-39	2	Nut-Lock, NI
28	3256-38	2	Washer-Flat
29	3231-22	2	Screw-CARR
30	322-3	2	Screw-HH
31	94-9566	2	Pad - Footrest

\* Not illustrated







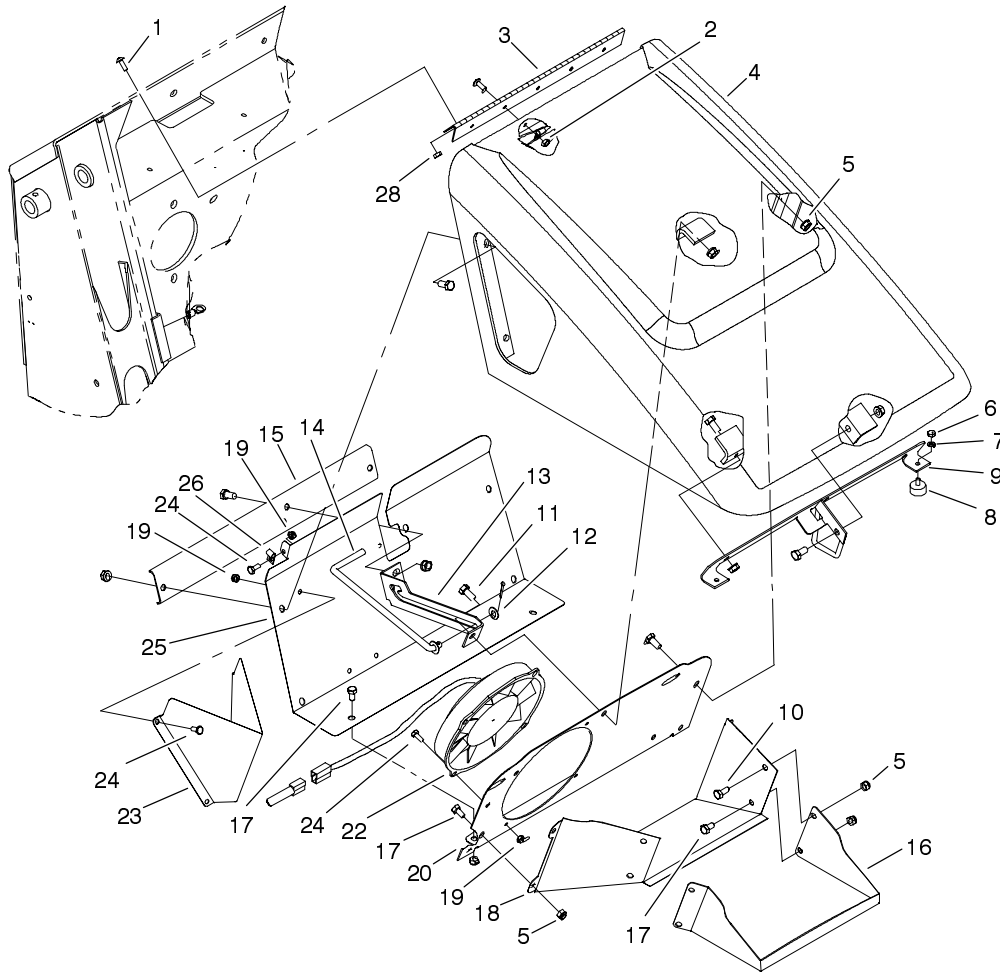
Sheet No.:18

### Quick Attach Assembly

Ref. No.	Part No.	Qty.	Description
1	98-4690	1	Quick Attach ASM
1:1	302-5	2	Fitting-Grease
1:2	32121-94	2	Pin-Special
1:3	98-4691-03	1	Mount-Attach, Quick
1:4	98-4692	2	Cam-Attach, Quick
1:5	100-3373	2	Pin
1:6	98-4694	2	Spring-Compression
1:7	98-4871	1	Bushing-Tension
2	99-1414	3	Pin-Pivot
3	302-5	3	Fitting-Grease
4	99-5105	3	Bolt-Shoulder

Ref. No.	Part No.	Qty.	Description





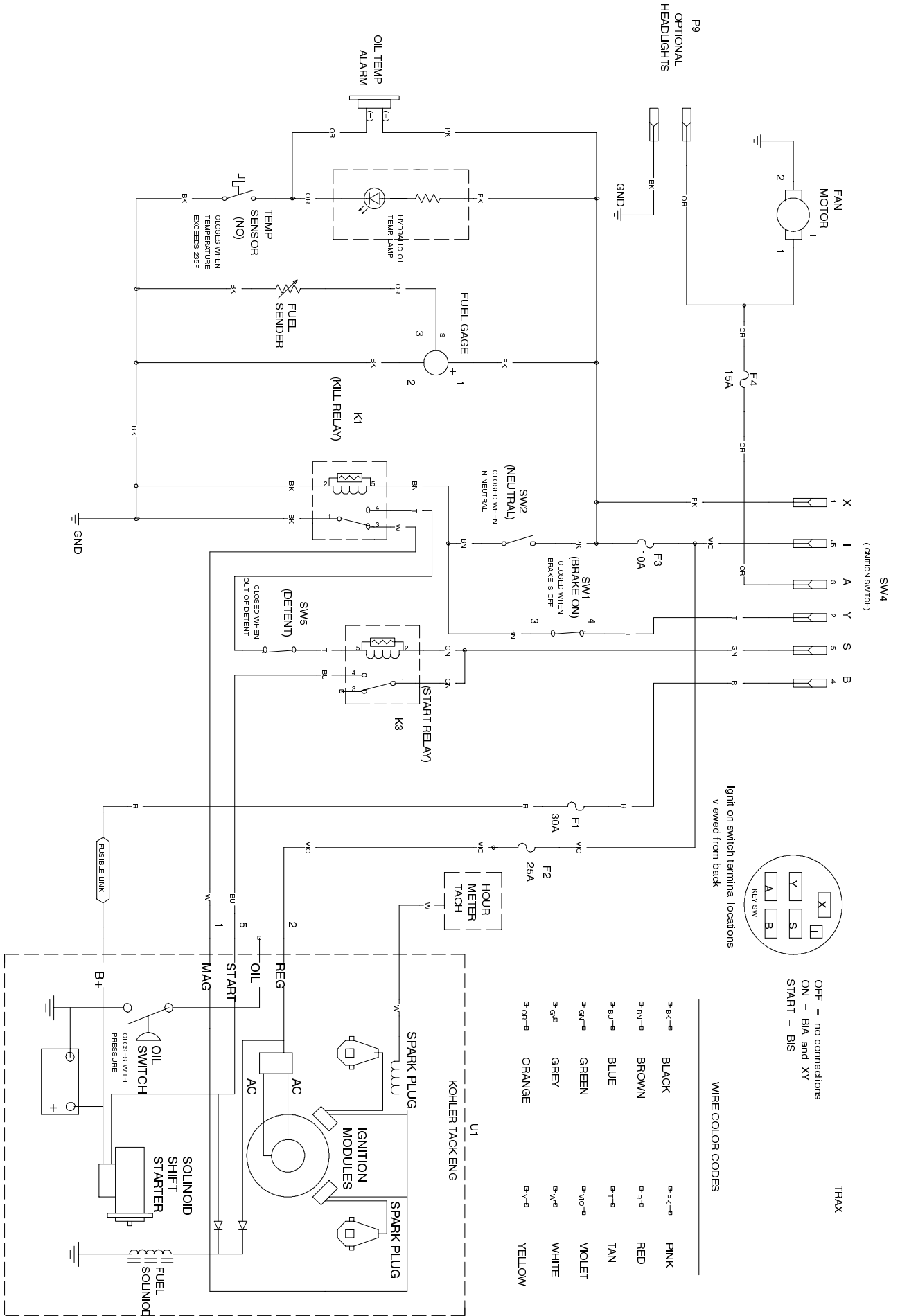
Sheet No.:23

### Hood Assembly

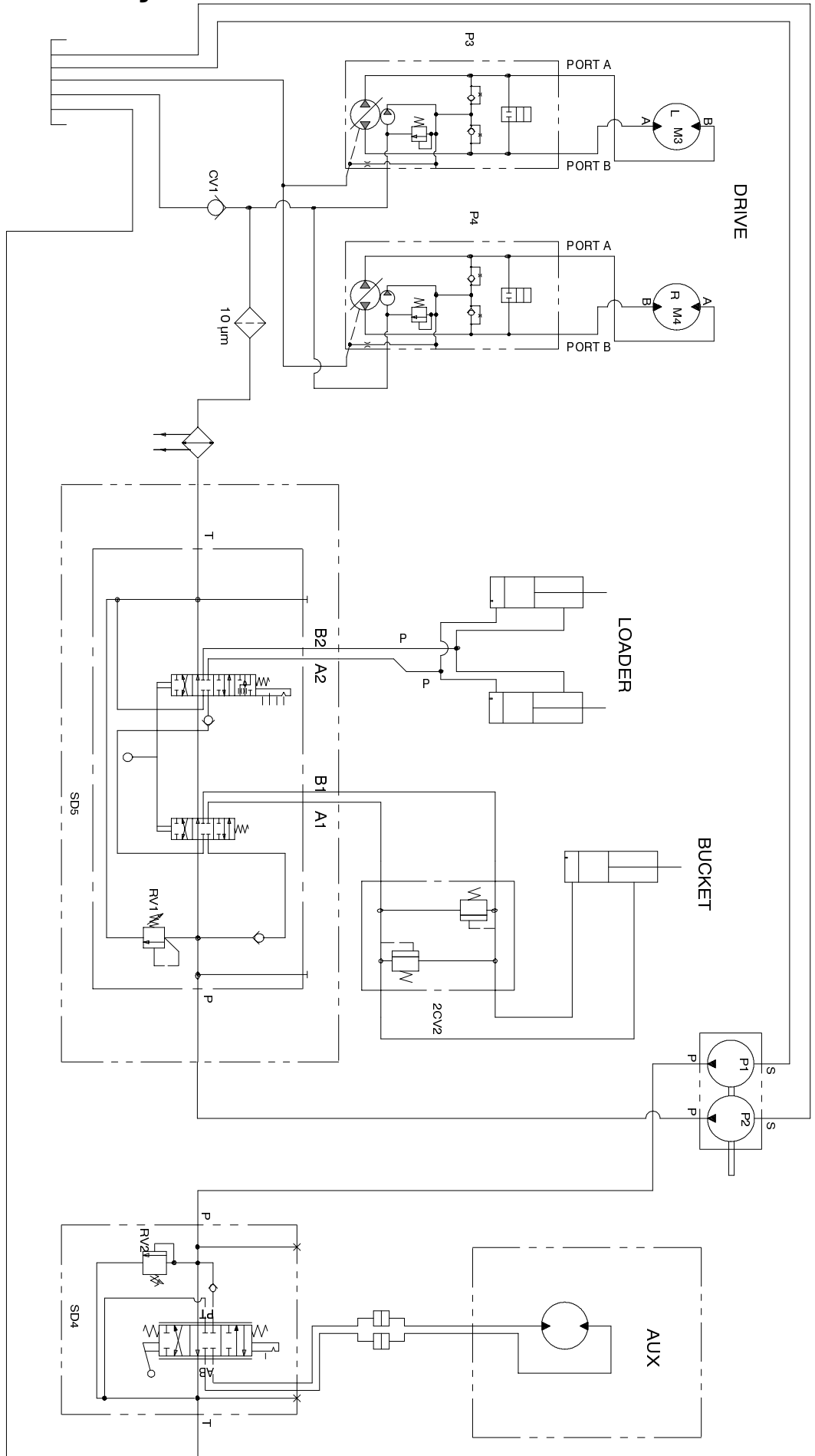
Ref. No.	Part No.	Qty.	Description
1	9114604	9	Screw-Head, Truss
2	3296-42	5	Nut-Lock NI
3	100-1284	1	Hinge-Hood
4	100-4222	1	Engine Hood ASM
5	3296-29	26	Nut-Lock
6	3217-5	12	Nut-Hex
7	3253-3	2	Washer-Lock
8	240-14	2	Bumper - Rubber
9	100-1297-03	1	Rod Latch ASM
10	322-3	17	Screw-HH
11	3272-11	1	Pin-Cotter
12	3256-24	1	Washer-Flat
13	100-1292-03	1	Bracket-Rod/Hood
14	100-4229	1	Rod-Support, Hood
15	100-4212-03	1	Support-Bracket, Rod/Hood
16	104-2813-03	1	Shroud-Fan, Front
17	322-2	9	Screw-HH
18	104-2812-03	1	Shroud-Fan
19	3296-16	9	Nut-Lock, NI
20	104-2814-03	1	Plate-Baffle, Fan
22	104-2809	1	Fan-12v
23	104-2811-03	1	Baffle-Fan
24	321-3	9	Screw-HH
25	104-2815-03	1	Panel-Rack, Fan

Ref. No.	Part No.	Qty.	Description
26	2412-91	2	Clamp
28	32128-33	4	Nut-HF

# Electrical Schematic



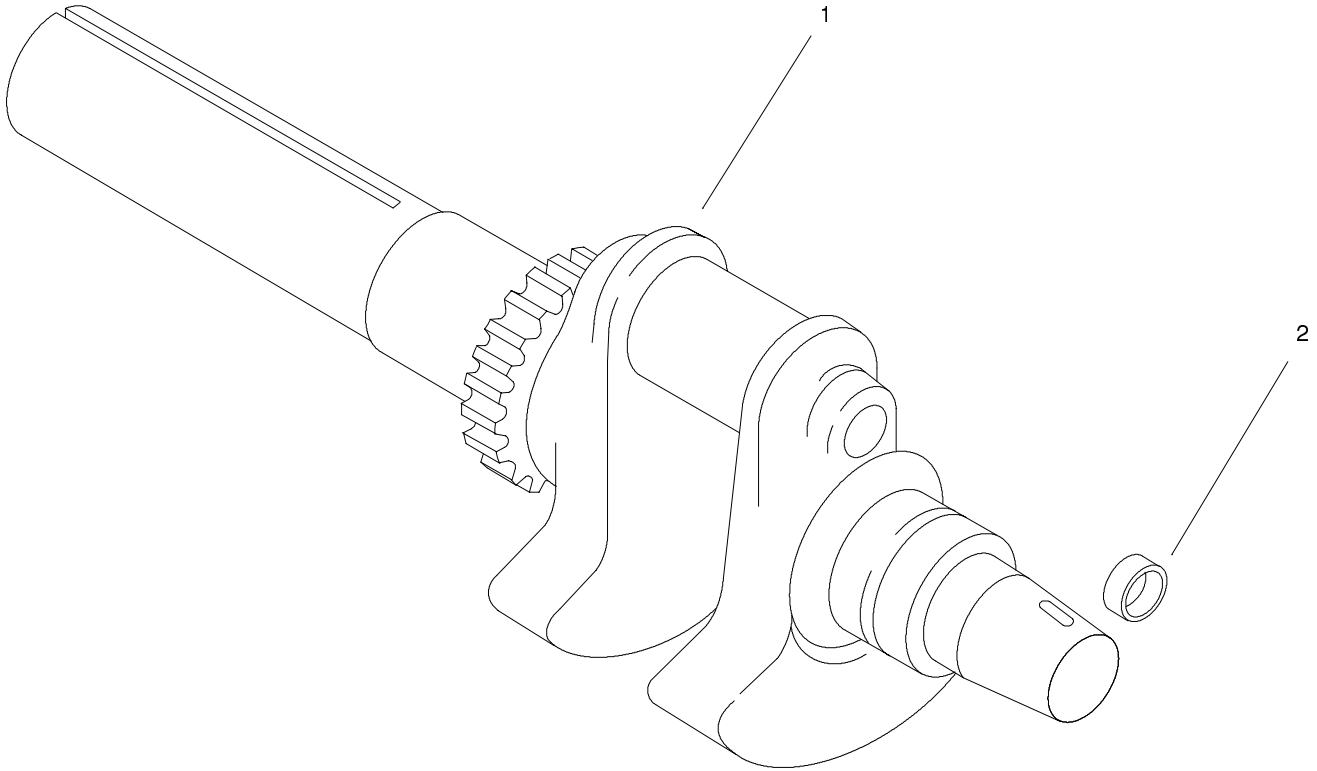
# Hydraulic Schematic



DISPLACEMENT AND PRESSURE CHART

COMPONENT	DISPLACEMENT		PRESSURE		FLOWRATE*	
	CU IN/REV	CU CM/REV	PSI	BAR	GPM	LPM
P1 *	0.73 CU IN	12 CC			11.2	42.4
P2 *	0.36 CU IN	6 CC			5.5	21.0
M1 M2	32.3 CU IN	528 CC				
P3, P4**	0-1.28 CU IN	21 CC			17	64
RV1			2400 PSI			
RV2			3000 PSI	207 BAR		
CV1			5 PSI			
2CV2			2800 PSI			

\* FLOWRATE CALCULATED AT 3600 RPM AND 98% EFFICIENCY;  
 \*\* FLOWRATE CALCULATED AT 3100 RPM AND 98% EFFICIENCY.

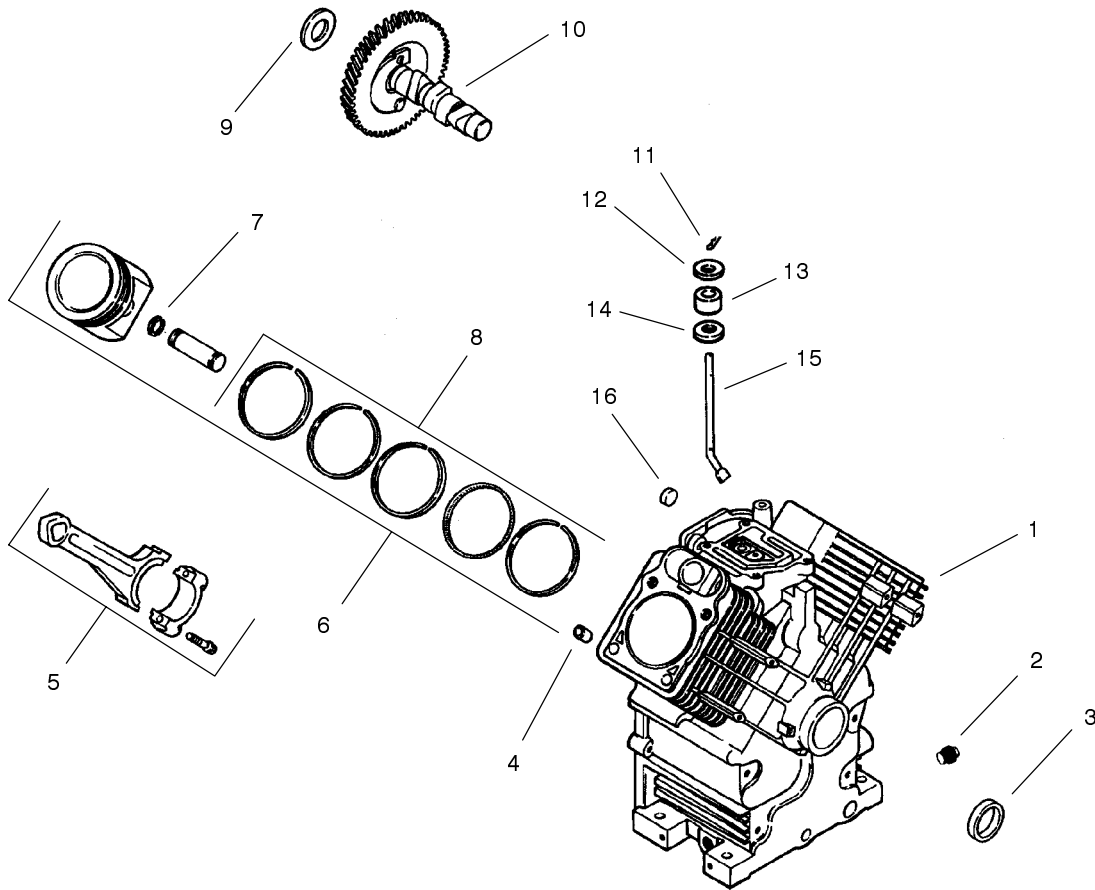


### Crankshaft (CH20S 64656 Kohler)

Ref. No.	Part No.	Qty.	Description
1	24 014 90-S	1	Crankshaft
2	52 139 09-S	1	Plug, cup

Ref. No.	Part No.	Qty.	Description

Obtain Parts From Kohler

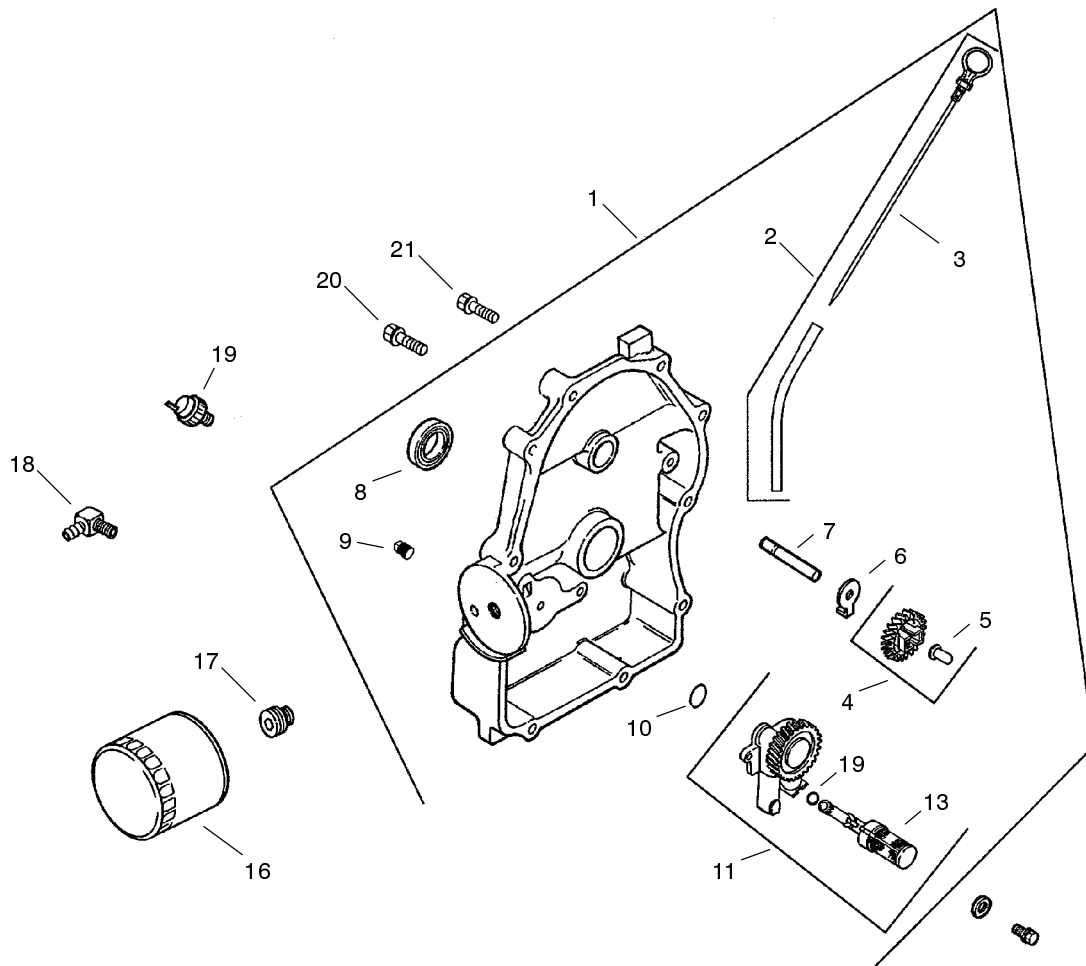


### Crankcase (CH20S 64656 Kohler)

Ref. No.	Part No.	Qty.	Description
1		1	Crankcase (Use Miniblock 24 782 15)
2	52 139 02-S	2	Plug, pipe
3	24 032 01-S	1	Seal, oil front
4	12 380 13-S	6	Pin, dowel locating
5	24 067 13-S	2	Connecting Rod (Std.)
	24 067 14-S	2	Connecting Rod (.25)
6	24 874 01-S	2	Piston w/Ring Set (Std.)
	24 874 02-S	2	Piston w/Ring Set (.25)
	24 874 03-S	2	Piston w/Ring Set (.50)
	24 874 14-S	2	Piston w/Ring Set (.08)
7	24 018 01-S	4	Retainer, piston pin
8	24 108 01-S	2	Ring Set (Std.)
	24 108 02-S	2	Ring Set (.25)
	24 108 03-S	2	Ring Set (.50)
9	12 422 09-S	A/R	Shim, camshaft - red
	12 422 13-S	A/R	Shim, camshaft - black
	12 422 07-S	A/R	Shim, camshaft - white
	12 422 08-S	A/R	Shim, camshaft - blue
	12 422 10-S	A/R	Shim, camshaft - yellow
	12 422 11-S	A/R	Shim, camshaft - green
	12 422 12-S	A/R	Shim, camshaft - gray
10	24 012 10-S	1	Camshaft

Ref. No.	Part No.	Qty.	Description
11	24 018 09-S	1	Retaining, Ring
12	M-931010-S	1	Washer, Nylon
13	28 032 09-S	1	Seal, governor cross shaft
14	24 468 15-S	1	Washer
15	24 144 33-S	1	Shaft, governor cross
16	52 139 09-S	1	Plug, cup

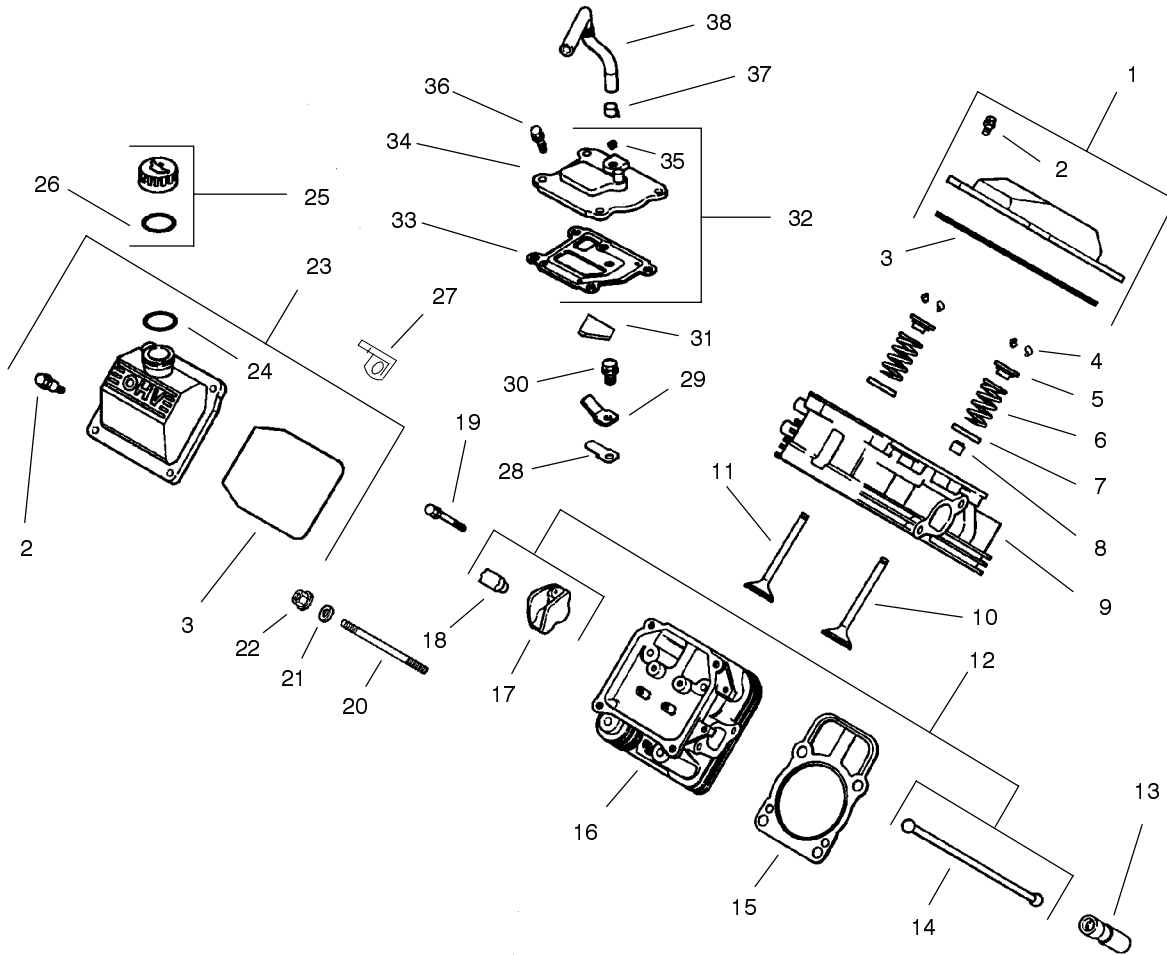
Obtain Parts From Kohler



## Oil Pan/Lubrication (CH20S 64656 Kohler)

Ref. No.	Part No.	Qty.	Description	Ref. No.	Part No.	Qty.	Description
1	24 009 92-S	1	Plate, Closure ASM (Includes 2-13)				
2	24 755 121-S	1	Dipstick & Tube Kit (Includes 3)				
3	24 038 10-S	1	Dipstick				
4	24 043 12-S	1	Kit, governor gear (Includes 5)				
5	12 380 01-S	1	Pin, governor regulating				
6	52 448 02-S	1	Tab, locking				
7	12 144 02-S	1	Shaft, governor gear				
8	52 032 08-S	1	Seal, oil (PTO end)				
9	X-75-23-S	2	Plug, pipe 1/8"				
10	24 153 08-S	1	O-Ring				
11	24 393 10-S	1	Oil pump assembly (Includes 12,13)				
12	24 153 01-S	1	O-Ring, oil pick-up				
13	24 381 04-S	1	Pick-up, oil				
14	M-631005-S	2	Washer, plain 6 mm				
15	M-645025-S	2	Screw, hex flange				
16	52 050 02-S	1	Filter, oil				
17	24 136 01-S	1	Nipple, oil filter				
18	25 155 02-S	1	Connector				
19	24 099 03-S	1	Switch, pressure				
20	24 086 16-S	9	Screw, hex flange				
21	24 086 17-S	1	Screw, hex flange				

Obtain Parts From Kohler

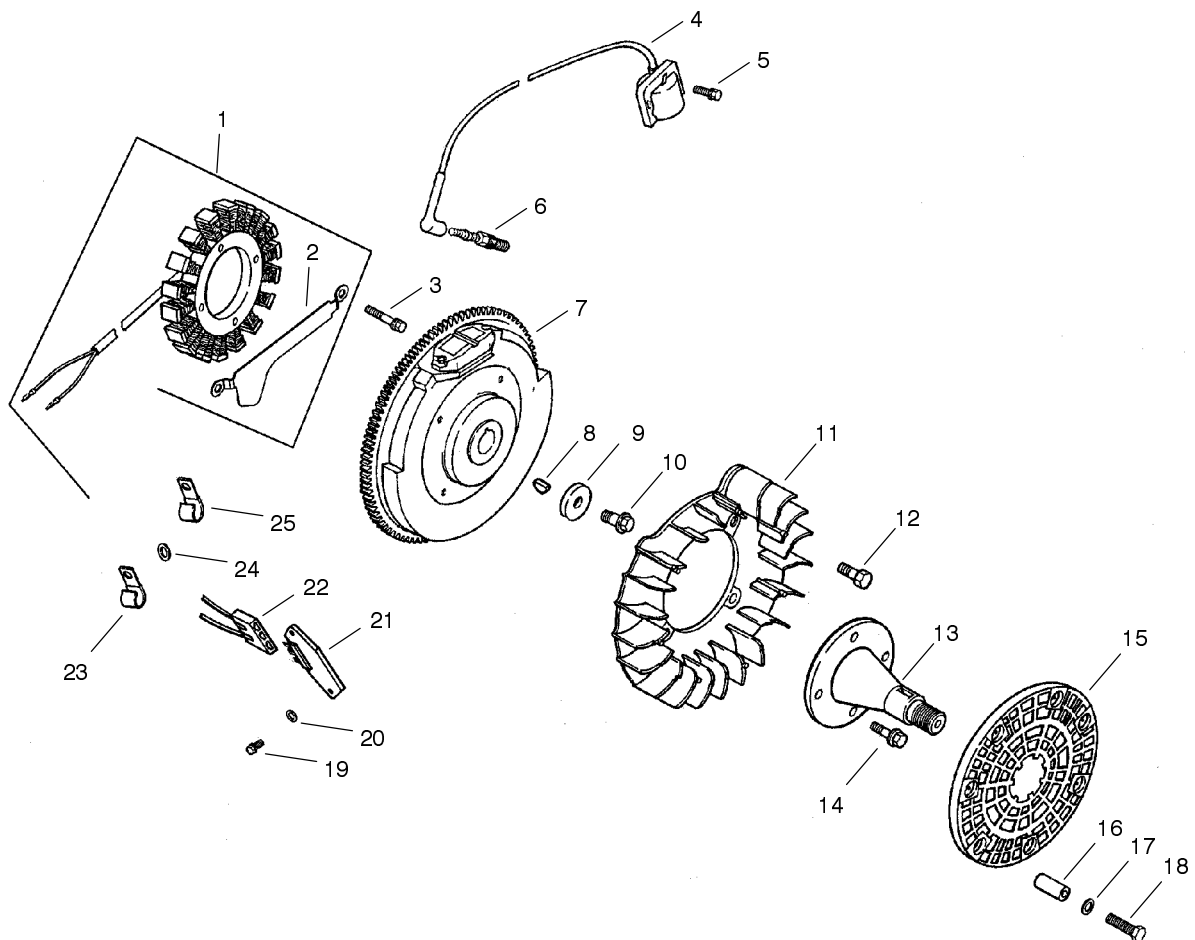


## Head/Valve/Breather (CH20S 64656 Kohler)

Ref. No.	Part No.	Qty.	Description
1	24 755 74-S	1	Kit, valve cover - plain (Includes 2-3)
2	24 086 32-S	4	Screw, shoulder
3	24 153 16-S	1	O-Ring, valve cover
4	12 755 03-S	4	Kit, retainer
5	12 173 01-S	4	Cap, valve spring
6	24 089 02-S	4	Spring, valve
7	235011-S	4	Retainer, spring
8	24 032 05-S	2	Seal, valve stem
9	24 318 68-S	1	Head assembly, #1 cylinder
10	24 017 01-S	2	Valve, intake ( Std.)
	24 017 02-S	2	Valve, intake (.25)
11	24 016 01-S	2	Valve, exhaust (Std.)
	24 016 02-S	2	Valve, exhaust (.25)
12	24 755 66-S	1	Kit, valve train (Includes 15,18,19)
13	12 351 01-S	4	Lifter, valve
14	24 411 05-S	4	Rod, push
15	24 041 08-S	2	Gasket, cylinder head
16	24 318 71-S	1	Head assembly, #2 cylinder
17	25 186 01-S	4	Arm, rocker
18	24 599 01-S	4	Pivot, rocker arm
19	M-640034-S	4	Screw, hex. flange
20	24 072 09-S	1	Stud, Cyl. Head

Ref. No.	Part No.	Qty.	Description
21	24 468 16-S	1	Washer, Flat
22	24 100 10-S	1	Nut-HF
23	24 755 75-S	1	Kit, valve cover - oil fill (Includes 2,3,23)
24	24 153 09-S	1	O-Ring
25	24 755 46-S	1	Kit, oil fill cap (Includes 24)
26	12 153 03-S	1	O-Ring, oil fill cap
27	24 445 01-S	1	Strap, Lifting
28	24 402 03-S	1	Reed, breather
29	12 018 01-S	1	Retainer, breather reed
30	M-545010-S	1	Screw, hex. flange
31	24 050 01-S	1	Filter, breather
32	24 033 01-S	1	Kit, breather (Includes 33-35)
33	24 041 23-S	1	Gasket, breather
34	24 096 58-S	1	Cover, breather
35	X-75-23-S	1	Plug, allen head pipe
36	M-645020-S	4	Screw, hex. flange
37	X-426-9-S	1	Clamp, breather
38	24 326 26-S	1	Hose, breather

Obtain Parts From Kohler



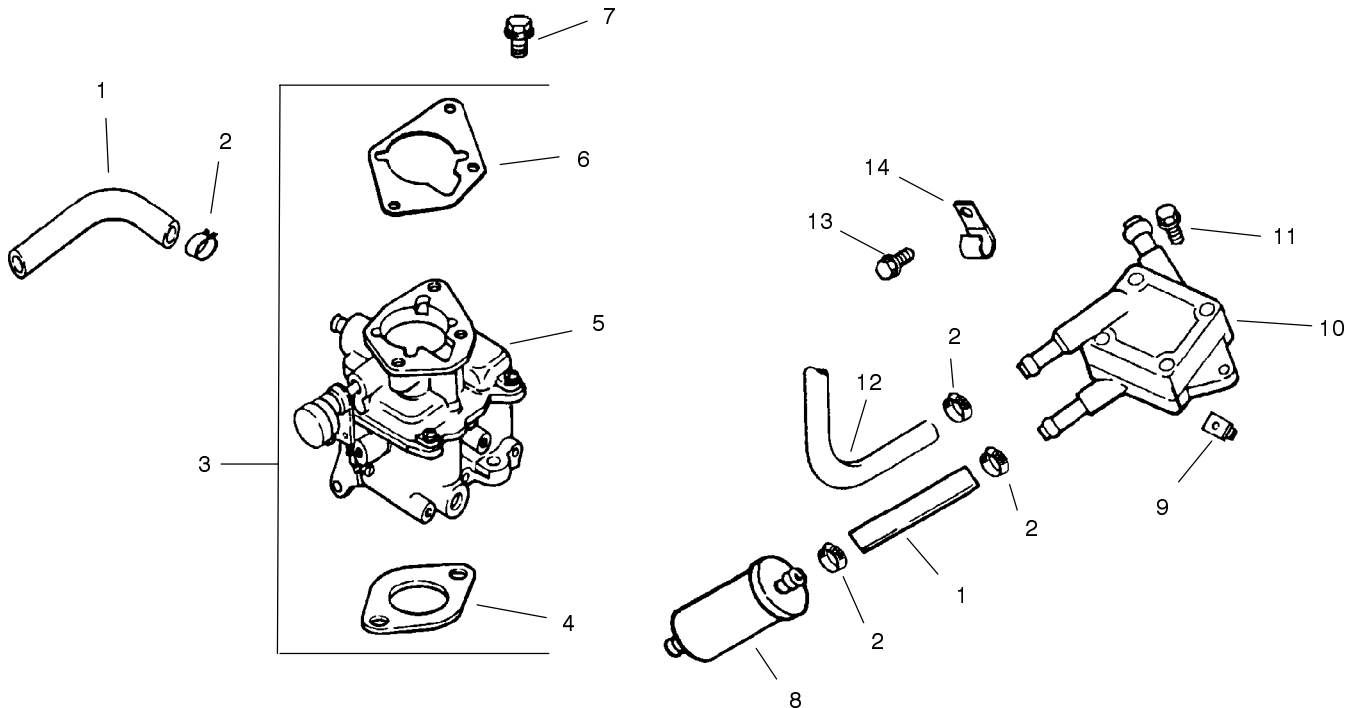
## Ignition/Electrical (CH20S 64656 Kohler)

Ref. No.	Part No.	Qty.	Description	Ref. No.	Part No.	Qty.	Description
1	54 755 09-S	1	Kit, 15 amp stator (Includes 2)	25	48 154 02-S	1	Clip, cable
2	24 126 71-S	1	Bracket, stator wire				<b>Not Illustrated</b>
3	M-548025-S	2	Screw, hex. cap	25 518 12-S	1	Lead, black, (4" - 18 gauge - insulated grip barrel eyelet terminals)	
4	24 584 01-S	2	Module, ignition	25 086 91-S	1	Screw, sems hex cap (used to mount terminal on wiring harness to baffle)	
5	M-545020-S	4	Screw, hex. flange	24 176 08-S	1	Harness, wiring	
6	12 132 06-S	2	Spark Plug	X-22-11-S	1	Washer, lock	
7	24 025 01-S	1	Flywheel	25 454 03-S	2	Tie, cable	
8	X-42-15-S	1	Key				
9	12 468 03-S	1	Washer, plain 3/8"				
10	12 086 14-S	1	Screw, hex flange				
11	24 157 03-S	1	Fan				
12	25 086 47-S	4	Bolt, shoulder				
13	24 144 13-S	1	Shaft, front drive				
14	M-839025-S	4	Screw, hex flange				
15	24 162 18-S	1	Screen, grass				
16	24 122 04-S	4	Spacer				
17	X-25-92-S	2	Washer, plain 3/16				
18	M-403025-S	4	Screw				
19	24 086 18-S	2	Screw, phillips hd.				
20	X-25-92-S	2	Washer				
21	25 403 03-S	1	Rectifier-regulator 15 amp				
22	236602-S	1	Connector				
23	235173-S	1	Clip, cable				
24	X-25-63-S	1	Washer, plain 1/4"				

Obtain Parts From Kohler





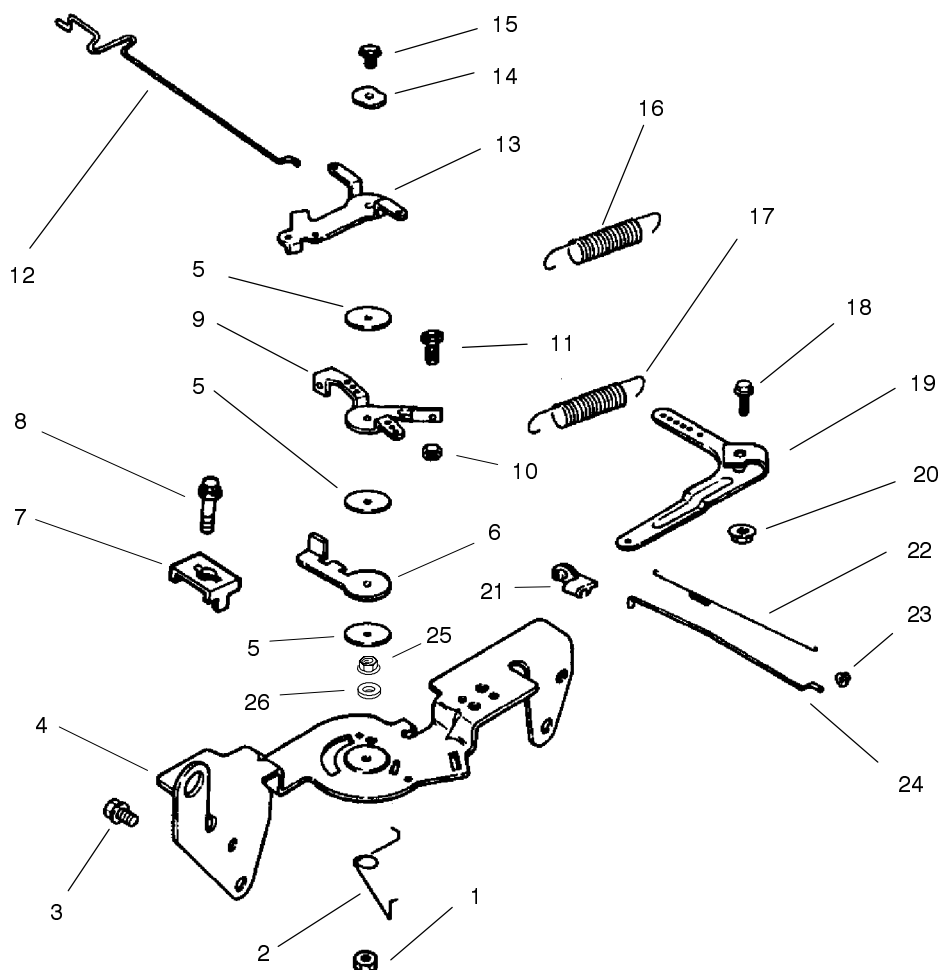


## Fuel System (CH20S 64656 Kohler)

Ref. No.	Part No.	Qty.	Description
1	25 353 32-S	2	Line, fuel - 9"
2	25 237 14-S	6	Clamp, hose
3	24 853 32-S	1	Kit, carburetor w/gasket (Incl. 4-6)
4	24 041 06-S	1	Gasket, air cleaner
5	24 053 32-S	1	Carburetor assembly (For information only not available separate Includes 24 757 01-S, 24 757 02-S, 24 757 03S & 24 757 07-S)
6	24 041 17-S	1	Gasket, carburetor
7	M-651030-S	2	Screw, hex. flange
8	24 050 02-S	1	Filter, fuel
9	24 100 01-S	2	Nut, plastic
10	24 393 16-S	1	Pump, fuel-pulse
11	24 086 12-S	2	Screw, hex cap
12	24 353 02-S	1	Line, fuel 15-1/2"
13	M-650012-S	1	Screw, hex flange
14	47 154 01-S	1	Clip, cable
	24 757 01-S	1	<b>Not Illustrated</b> Kit, solenoid (Includes solenoid 24 521 01-S, O-Ring 24 153 04-S, O-Ring 24 153 05-S, O-Ring 24 153 06-S,

Ref. No.	Part No.	Qty.	Description
			Solenoid screw 24 086 07-S, & Solenoid 24 435 01-S)
	24 757 02-S	1	Kit-Float
	24 757 07-S	1	Kit, choke (Includes choke lever cap 24 173 02-S)
	24 757 03-S	1	Kit, carburetor repair (Includes inlet needle valve clip 24 154 01-S, inlet needle valve 24 462 01-S, carburetor body screw 24 086 09-S, carburetor body gasket 24 041 09-S, slow O-Ring 24 153 02-S, O-Ring 24 13 04-S, O-Ring 24 153 05-S, O-Ring 24 153 06-S, idle needle 24 368 01-S, & idle needle spring 24 089 11-S)

Obtain Parts From Kohler

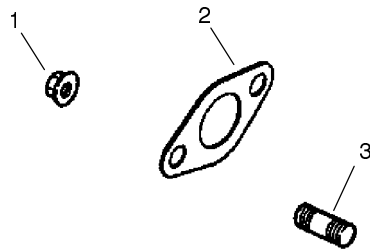


## Engine Controls (CH20S 64656 Kohler)

Ref. No.	Part No.	Qty.	Description	Ref. No.	Part No.	Qty.	Description
1	M-547050-S	1	Nut, hex. lock	25	M-545010-S	1	Nut-HF
2	24 089 03-S	1	Spring, choke return	26	X-20-1-S	1	Washer, Lock
3	M-645016-S	4	Screw, hex. flange				
4	24 126 56-S	1	Bracket, control				
5	24 468 01-S	3	Washer, plain				
6	24 090 07-S	1	Lever, throttle actuator				
7	12 237 01-S	2	Clamp, cable				
8	M-545016-S	2	Screw, hex. flange				
9	24 090 03-S	1	Lever, throttle control				
10	M-446030-S	1	Nut, hex				
11	M-401030-S	1	Screw, hex. cap				
12	24 079 02-S	1	Linkage, choke				
13	24 090 05-S	1	Lever, choke				
14	41 468 03-S	1	Washer, spring				
15	M-545020-S	1	Screw, hex. flange				
16	24 089 51-S	1	Spring, throttle limiter				
17	24 089 46-S	1	Spring, governor				
18	24 211 03-S	1	Screw, hex. flange				
19	24 090 33-S	1	Lever, governor				
20	M-641060-S	1	Nut, hex. flange				
21	25 158 11-S	1	Bushing, linkage retaining				
22	24 089 01-S	1	Spring, linkage				
23	25 158 08-S	1	Bushing, linkage retaining				
24	24 079 01-S	1	Linkage, throttle				

Obtain Parts From Kohler





### Exhaust (CH20S 64656 Kohler)

Ref. No.	Part No.	Qty.	Description
1	M-841080-S	4	Nut, hex flange
2	24 041 02-S	2	Gasket, exhaust
3	25 072 04-S	4	Stud
			<b>Not Illustrated</b>
	24 782 15	1	Miniblock
	24 755 107-S	1	Gasket Set

Ref. No.	Part No.	Qty.	Description

Obtain Parts From Kohler

