



4 IN 1 Bucket Dingo[®] Attachment Model No. 22411—210000001 and Up

Parts Catalog

Ordering Replacement Parts

To order replacement parts, please supply: the part number, the quantity, and the description of each part desired.

Understanding Reference Numbers

Each identified part in an illustration has a reference number. The reference number for a part also appears in the parts list, along with other information about the part.

This catalog uses two special reference number formats, one to indicate parts in a service assembly and another to indicate the quantity of a given part in an illustration.

Service Assembly Reference Numbers

Parts in service assemblies have reference numbers in the form **a:b**. The **a** represents the reference number of the entire service assembly and the **b** represents a sequential number unique to each part within the service assembly.

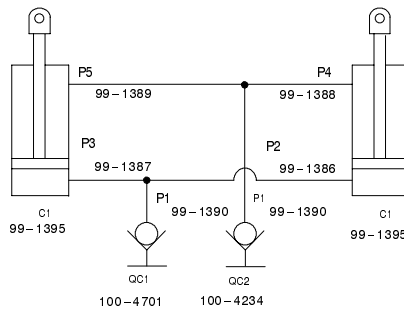
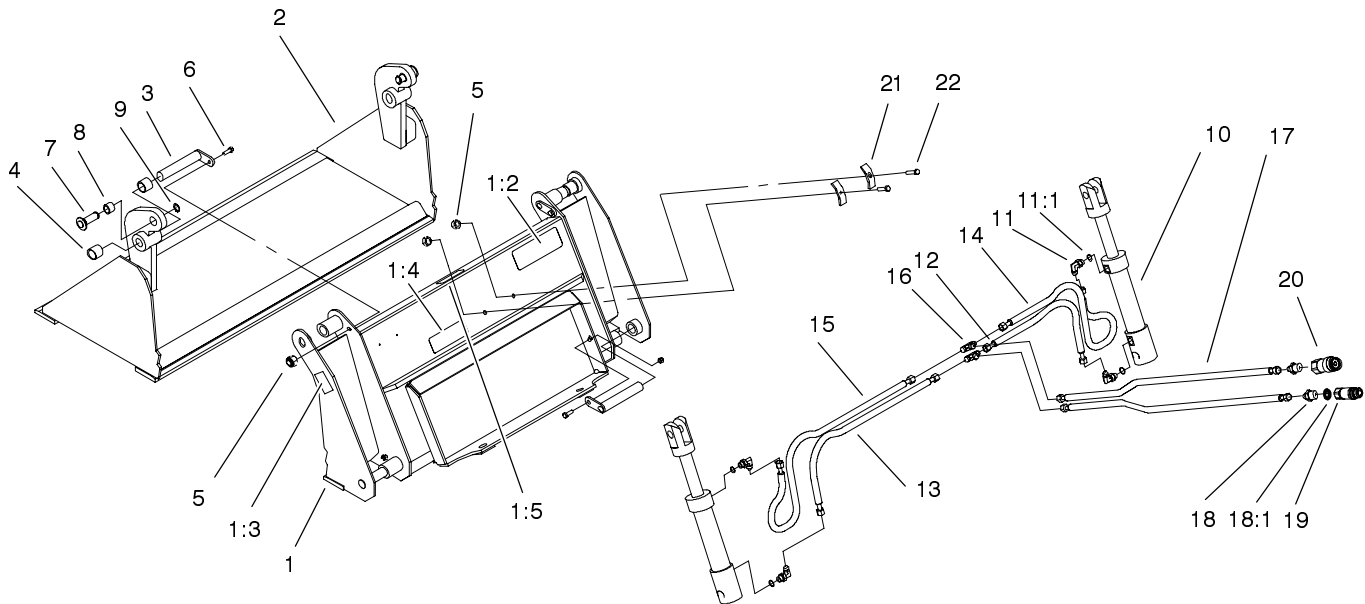
For example, a wheel assembly might be identified by reference number **6**, the tire by **6:1**, the valve by **6:2**, and the wheel by **6:3**. When you order the assembly identified by reference number **6**, you receive all parts identified by reference numbers **6:1**, **6:2**, and **6:3**. However, you may also order any part individually.

Reference numbers of this type appear in illustrations and in part lists.

Reference Numbers Indicating Quantity

In an illustration, if a reference number indicates more than one part, the reference number has the form **nX y**. The **n** represents the quantity of the part, the **X** is the multiplication symbol, and the **y** represents the reference number.

For example, in an illustration, the reference number **2X 37** means that two of the parts identified by reference number **37** are indicated.



	Function	Size	Diameter	
C1	Clamping	50/32X 120		
P1			.25 in	6.3mm
P2			.25 in	6.3mm
P3			.25 in	6.3mm
P4			.25 in	6.3mm
P5			.25 in	6.3mm

Sheet No.:A1

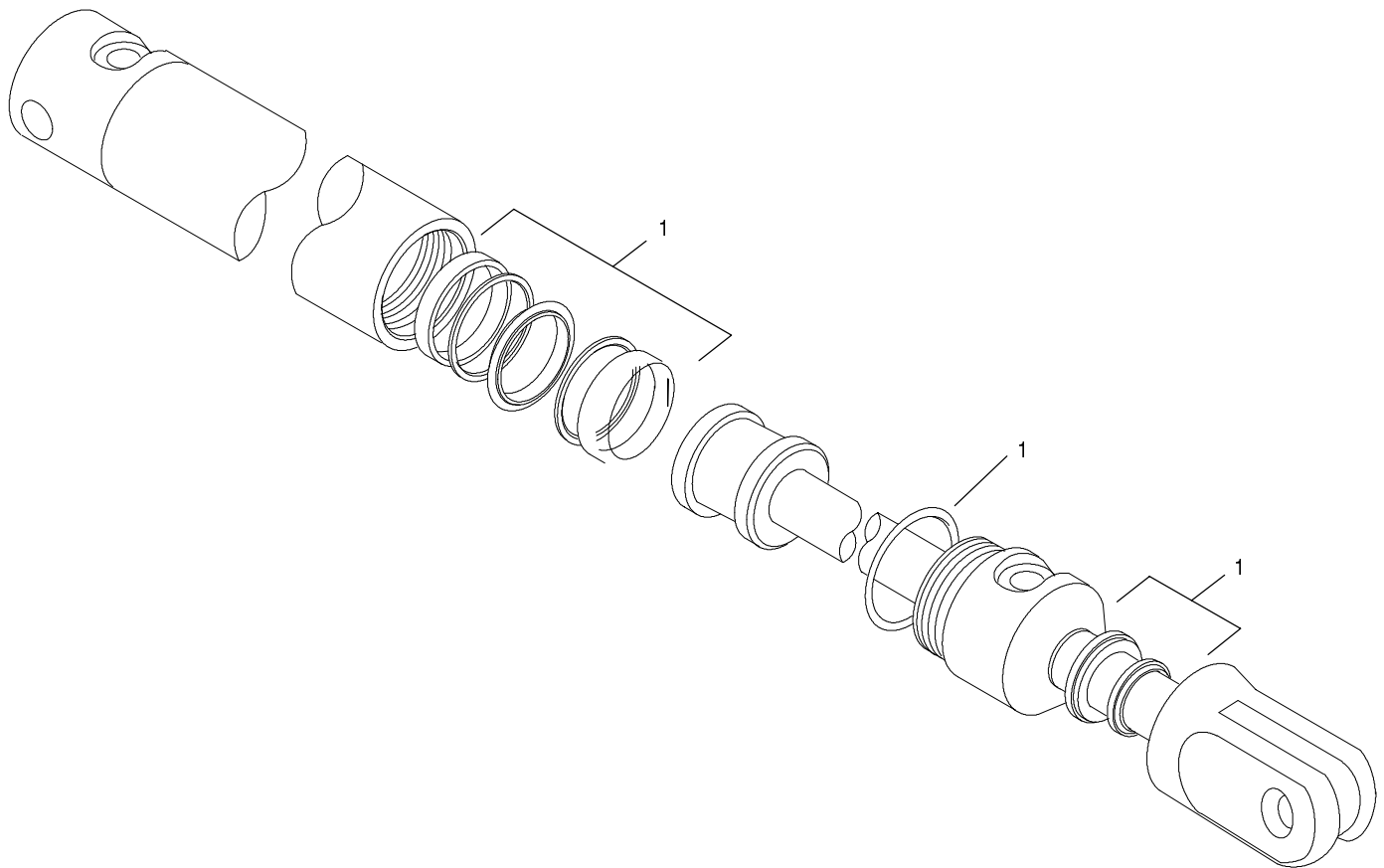
C-2845

4 in 1 Bucket Assembly

Ref. No.	Part No.	Qty.	Description
1	98-2706	1	Base ASM
1:2	100-4648	1	Decal-Warning
1:3	93-9367	1	Decal-Warning
1:4	100-4689	1	Decal-Load Rating
1:5	98-4683	1	Decal-Attachment, Dingo
2	99-1359	1	Jaw
3	99-1361	4	Pin
4	99-1363	4	Bushing
5	33024-00	6	Nut-Lock
6	33104-025	4	Screw-HHF
7	99-1362	2	Pin
8	99-1364	2	Bushing
9	32120-72	2	Ring-Snap
10	99-1395	2	Cylinder - Hydraulic
11	353-374	4	Elbow - 90 DEG
11:1	237-42	1	O-Ring
12	99-1386	1	Hose ASM-Hydraulic
13	99-1387	1	Hose ASM-Hydraulic
14	99-1388	1	Hose ASM-Hydraulic
15	99-1389	1	Hose ASM-Hydraulic
16	99-1391	2	Adapter - Tee
17	99-1390	2	Hose ASM-Hydraulic
18	100-4749	2	Adapter-Hydraulic
18:1	237-80	1	O-Ring

Ref. No.	Part No.	Qty.	Description
19	100-4701	1	Nipple-Connect, Pressure
*19:1	100-6120	1	Kit-Seal
20	100-4234	1	Coupler-Face, Flush
*20:1	100-6119	1	Kit-Seal
21	99-1360	2	Clamp - Hose
22	33104-040	2	Screw-HHF

* Not illustrated



Sheet No.:A2
C-2972

Hydraulic Cylinder No. 99-1395

Ref. No.	Part No.	Qty.	Description
1	99-1417	1	Kit - Seal

Ref. No.	Part No.	Qty.	Description

