



Backhoe

Dingo[®] Attachment

Model No. 23160—210000001 and Up

Parts Catalog

Ordering Replacement Parts

To order replacement parts, please supply: the part number, the quantity, and the description of each part desired.

Understanding Reference Numbers

Each identified part in an illustration has a reference number. The reference number for a part also appears in the parts list, along with other information about the part.

This catalog uses two special reference number formats, one to indicate parts in a service assembly and another to indicate the quantity of a given part in an illustration.

Service Assembly Reference Numbers

Parts in service assemblies have reference numbers in the form **a:b**. The **a** represents the reference number of the entire service assembly and the **b** represents a sequential number unique to each part within the service assembly.

For example, a wheel assembly might be identified by reference number **6**, the tire by **6:1**, the valve by **6:2**, and the wheel by **6:3**. When you order the assembly identified by reference number **6**, you receive all parts identified by reference numbers **6:1**, **6:2**, and **6:3**. However, you may also order any part individually.

Reference numbers of this type appear in illustrations and in part lists.

Reference Numbers Indicating Quantity

In an illustration, if a reference number indicates more than one part, the reference number has the form **nX y**. The **n** represents the quantity of the part, the **X** is the multiplication symbol, and the **y** represents the reference number.

For example, in an illustration, the reference number **2X 37** means that two of the parts identified by reference number **37** are indicated.

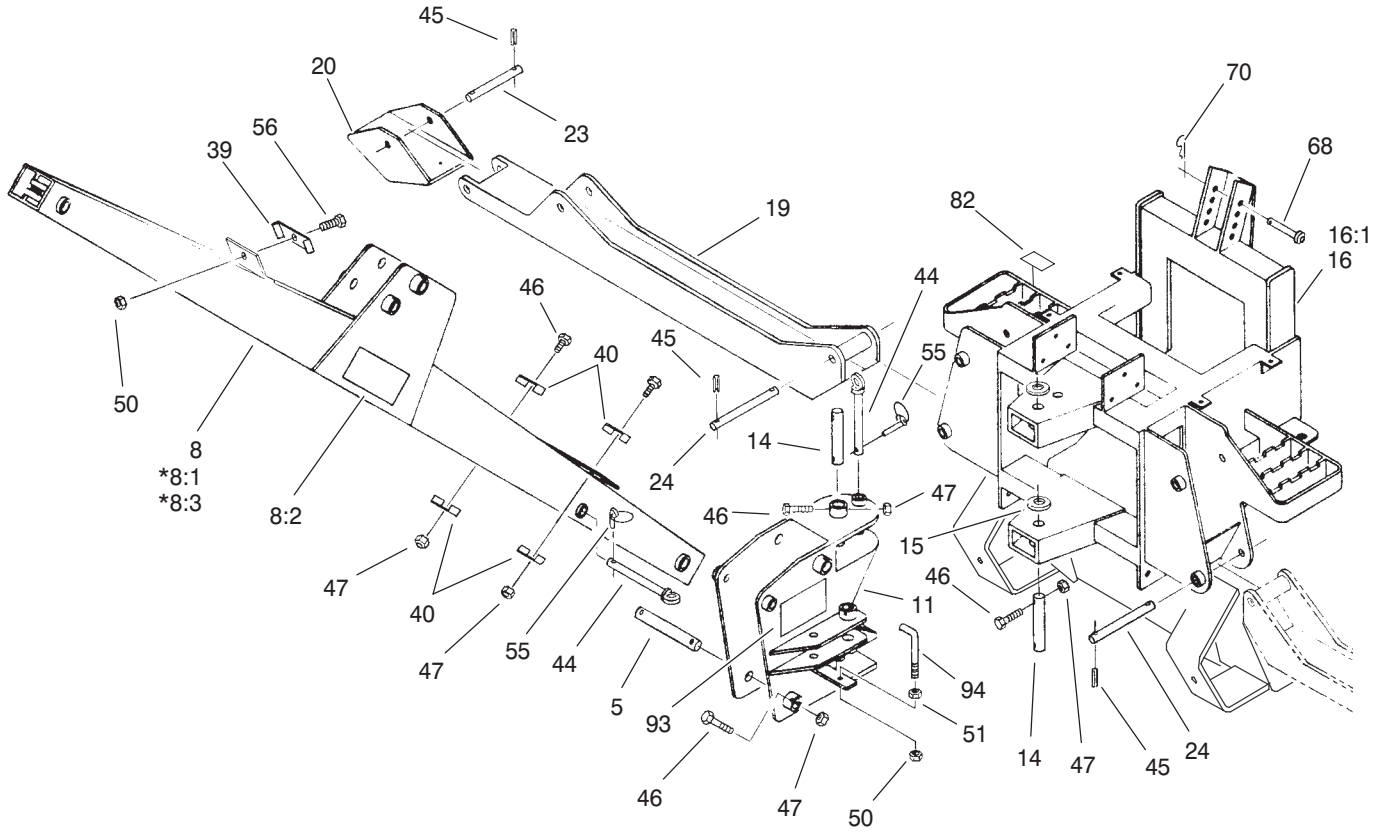
Contents

Description	Page	Description	Page
Crowd Arm and Linkage Assembly	3	Hydraulics Assembly	8
Frame, Boom and Stabilizer Assembly	4	Hydraulic Fittings and Tooth Assembly	9
Seat and Mounting Assembly	5	Valve Assembly No. 100-7205	10
Cylinder and Controls Assembly	6	Hydraulic Schematic	11
Cylinder and Controls Assembly	7		

Part Description Abbreviations

Part descriptions in this catalog may include the following abbreviations.

Abbreviation	Meaning	Abbreviation	Meaning
AR	as required	INC	incorporated
ASM	assembly	LH	left hand
CARR	carriage	NI	nylon insert
DEG	degrees	PPH	Phillips pan head
FH	flat head	PTH	Phillips truss head
GA	gauge	PTO	power take off
HF	hex flange	RH	right hand
HH	hex head	SFH	slotted fillister head
HHF	hex head flange	SHH	slotted hex head
HLH	hex lag head	SQH	square head
HJ	hex jam	SHWH	slotted hex washer head
HOC	height-of-cut	SPH	slotted pan head
HS	hex socket	SRH	slotted round head
HSBH	hex socket button head	STD	standard
HSFH	hex socket flat head	TAP	self tapping
HSH	hex socket head	TTH	Torx truss head
HWH	hex washer head	WH	wing head
HWHTF	hex washer head thread forming		



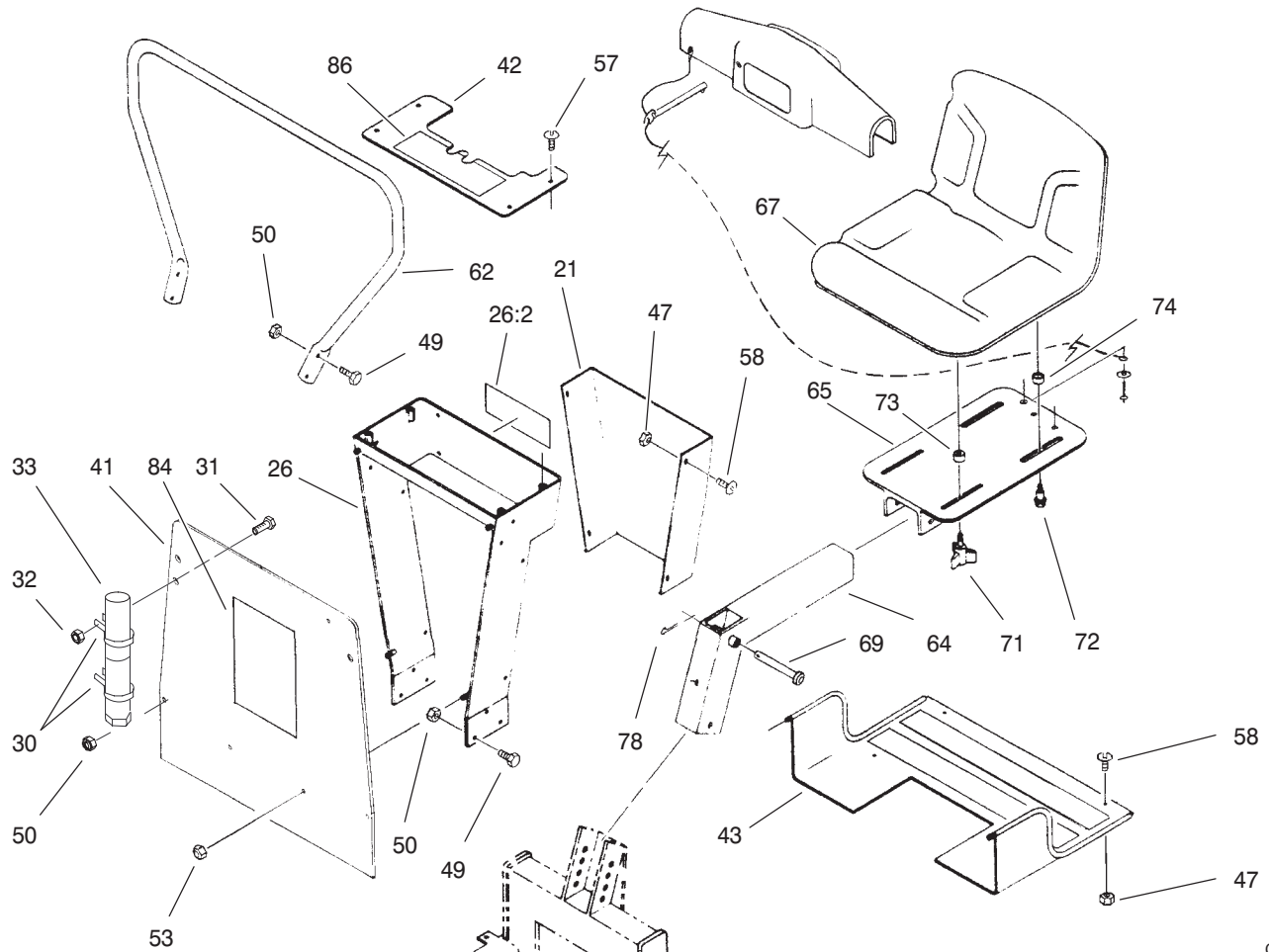
C-2902

Frame, Boom and Stabilizer Assembly

Ref. No.	Part No.	Qty.	Description
5	100-7170	5	Pin-Bucket
8	100-7215	1	Boom ASM
*8:1	302-19	1	Fitting - Grease
8:2	100-4132	2	Decal-Warning
*8:3	302-60	1	Fitting-Lube
11	100-7156	1	Swivel ASM
14	100-7175	2	Pin-Pivot
15	100-7187	2	Washer-Thrust
16	100-7151	1	Box Frame ASM
*16:1	302-19	2	Fitting - Grease
19	100-7153	2	Stabilizer ASM
20	100-7161	2	Stabilizer Foot ASM
23	100-7184	2	Pin-Stabilizer Foot
24	100-7185	4	Pin-Stabilizer
39	100-7183	1	Bracket-Hose Boom
40	100-7182	4	Bracket-Hose Pivot
44	100-7164	2	Lock Pin ASM
45	32121-15	A/R	Pin-Roll
46	321-33	A/R	Screw-HH
47	32146-17	A/R	Nut-Lock
50	3296-29	A/R	Nut-Lock,NI
51	3217-6	2	Nut-Hex
55	283-72	6	Pin-Lynch
56	322-7	1	Screw-HH
68	100-7209	1	Pin-Clevis
70	3290-355	1	Hairpin

Ref. No.	Part No.	Qty.	Description
82	100-7263	2	Decal-Warning
93	100-4134	2	Decal-Pin Placement
94	100-7222	2	Bracket-Hose Pivot

* Not illustrated

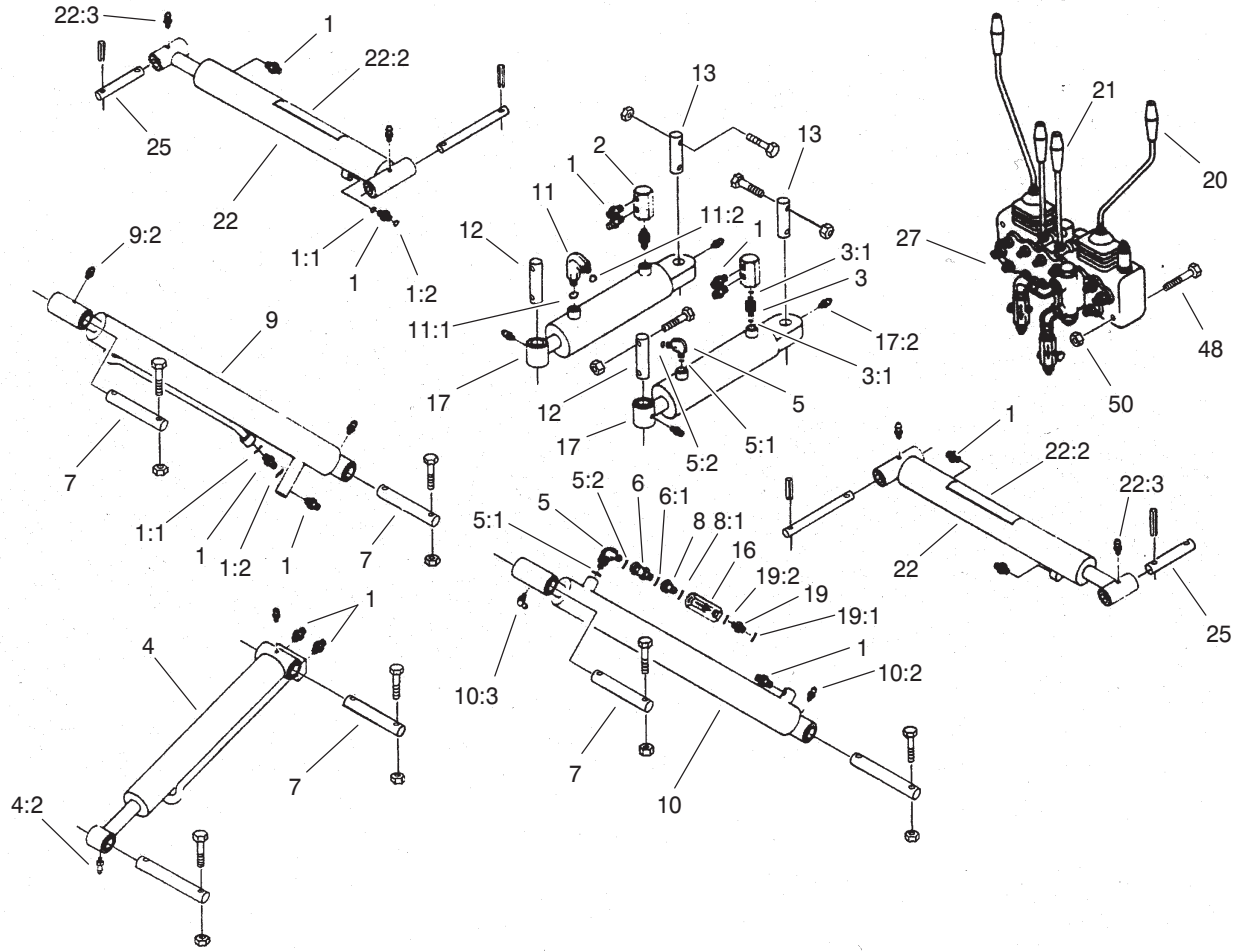


C-2903

Seat and Mounting Assembly

Ref. No.	Part No.	Qty.	Description	Ref. No.	Part No.	Qty.	Description
21	100-7166	1	Guard-Hose	84	100-4762	1	Decal - Side
26	100-7207	1	Valve Mount ASM	86	100-4138	1	Decal-Panel,Control
26:2	100-4133	1	Decal-Warning				
30	2412-120	2	R-Clamp				
31	32104-19	2	Screw				
32	3296-2	2	Nut-Lock				
33	74-0720	1	Tube-Manual				
41	100-7165	1	Panel-Front				
42	100-7169	1	Cover-Valve				
43	100-7162	1	Foot Plate ASM				
47	32146-17	A/R	Nut-Lock				
49	322-3	10	Screw-HH				
50	3296-29	A/R	Nut-Lock,NI				
53	3296-17	4	Nut-Lock NI				
57	3258-2	4	Screw				
58	3290-133	8	Screw				
62	100-7167	1	Handle-Guard				
64	100-7157	1	Seat Mount ASM				
65	100-7158	1	Seat Plate ASM				
67	88-3950	1	Seat - Medium Back				
69	100-7208	1	Pin-Clevis				
71	700806	2	Knob				
72	92-6986	2	Bolt - Shoulder				
73	92-6750	2	Spacer - Nylon				
74	109989	2	Spacer - Nylon				
78	3272-31	1	Pin-Cotter				

* Not illustrated

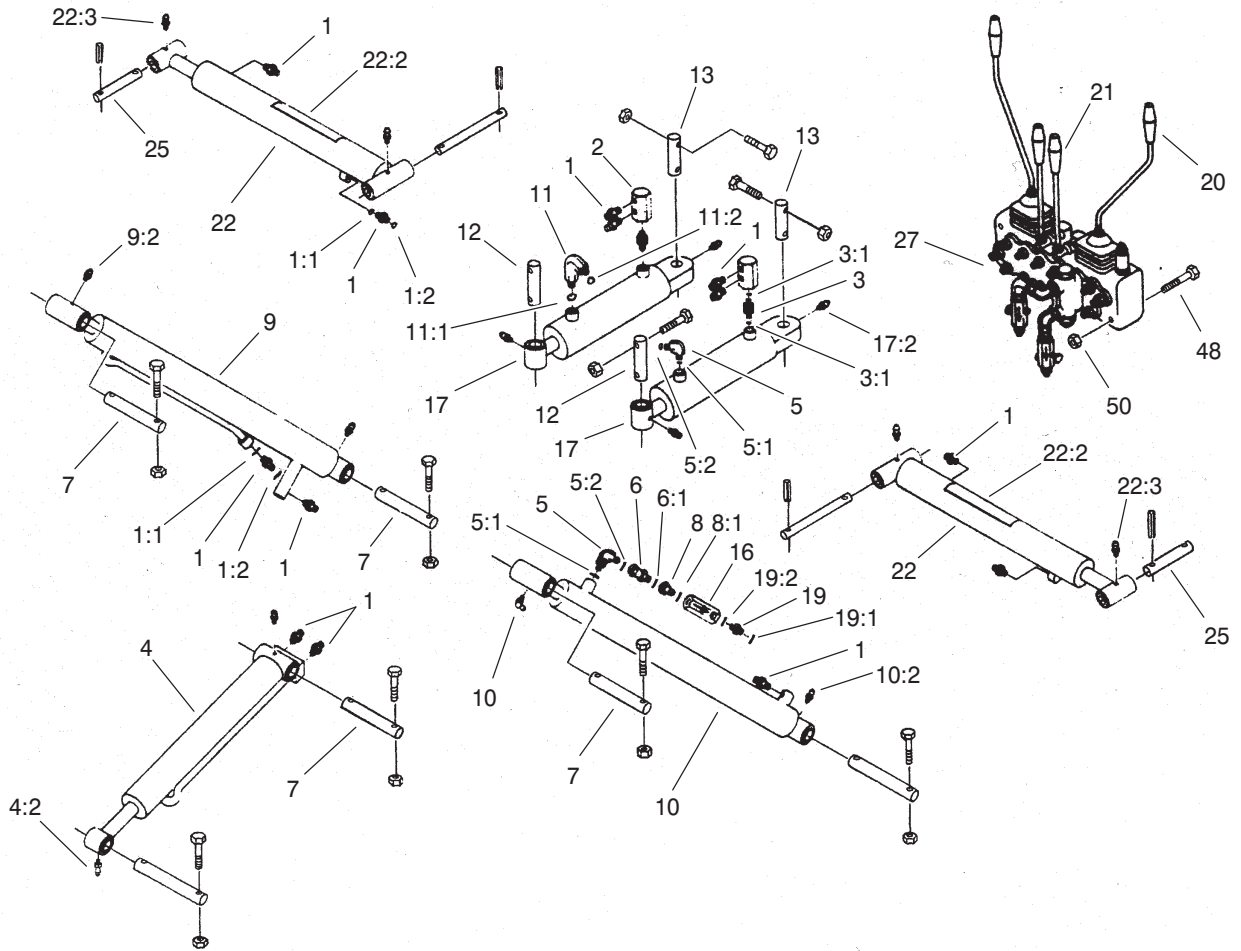


C-2904

Cylinder and Controls Assembly

Ref. No.	Part No.	Qty.	Description
1	340-92	13	Fitting
1:1	237-78	1	O-Ring
1:2	237-21	1	O Ring
2	100-7178	2	Fitting-Hex
3	93-7597	2	Fitting
3:1	237-78	2	O-Ring
4	100-7204	1	Cyl.-Hyd., Bucket
*4:1	100-7220	1	Seal Kit
4:2	302-19	2	Zerk-Grease
5	340-132	2	90 Elbow
5:1	237-78	1	O-Ring
5:2	237-21	1	O Ring
6	100-7211	1	Fitting-Straight Swivel
6:1	237-78	1	O-Ring
7	100-7172	4	Pin-Boom
8	100-7216	1	Fitting-Reducer
8:1	237-42	1	O-Ring
9	100-7202	1	Cyl.-Hyd., Crowd Arm
*9:1	100-7220	1	Seal Kit
9:2	302-19	2	Zerk-Grease
10	100-7203	1	Cylinder-Hyd., Boom
*10:1	100-7220	1	Seal Kit
10:2	302-19	1	Zerk-Grease
10:3	302-60	1	Zerk-Grease, 90 DEG

Ref. No.	Part No.	Qty.	Description
11	100-7213	1	Fitting-90 Elbow Long
11:1	237-78	1	O-Ring
11:2	237-35	1	O-Ring
12	100-7173	2	Pin-Swivel, Front
13	100-7174	2	Pin-Swivel, Rear
16	98-9742	3	Valve - Flow Control
17	100-7201	2	Cylinder-Hyd., Swing
*17:1	100-7221	1	Seal Kit
17:2	302-19	2	Zerk-Grease
19	340-1	1	Adapter
19:1	237-35	1	O-Ring
19:2	237-42	1	O-Ring
20	100-7168	2	Bent Handle ASM
21	100-7206	2	Straight Handle ASM
22	100-7217	2	Stabilizer Cyl. ASM
*22:1	100-7220	1	Seal Kit
22:2	100-4136	2	Decal-Warning
22:3	302-19	2	Zerk-Grease
25	100-7186	2	Pin-Stabilizer Cylinder



C-2904

Cylinder and Controls Assembly

Ref. No.	Part No.	Qty.	Description
27	100-7205	1	Valve ASM
48	322-12	3	Screw-HH
50	3296-29	A/R	Nut-Lock, NI

Ref. No.	Part No.	Qty.	Description

* Not illustrated (See Page 11 of this catalog)

Hydraulic Schematic

PRESSURE AND SIZING CHART					
COMPONENT	FUNCTION	PRESSURE		SIZE	
		PSI	BARS	MM	IN
RV1	-	1950	134	-	-
RV2	-	2050	141	-	-
C1	BOOM	-	-	Ø 50.8/28.6 X 445	-
C2	SWING	-	-	Ø 63.5/38.1 X 152	-
C3	STABILIZER	-	-	Ø 50.8/28.6 X 324	-
C4	CROWD	-	-	Ø 50.8/28.6 X 419	-
C5	BUCKET	-	-	Ø 50.8/28.6 X 305	-
P1	-	-	-	Ø 9.5	Ø .38
P2	-	-	-	Ø 6.4	Ø .25
P3	-	-	-	Ø 6.4	Ø .25
P4	-	-	-	Ø 6.4	Ø .25
P5	-	-	-	Ø 6.4	Ø .25
P6	-	-	-	Ø 6.4	Ø .25
P7	-	-	-	Ø 6.4	Ø .25
P8	-	-	-	Ø 6.4	Ø .25
P9	-	-	-	Ø 6.4	Ø .25
P10	-	-	-	Ø 6.4	Ø .25
P11	-	-	-	Ø 6.4	Ø .25
P12	-	-	-	Ø 6.4	Ø .25

