



## Electric Bed Lift Kit

Workman® 2100

Model No. 07254

### Installation Instructions

1. Position the machine on a level surface. Set the parking brake, turn the ignition off, and remove the key.

#### WARNING

##### POTENTIAL HAZARD

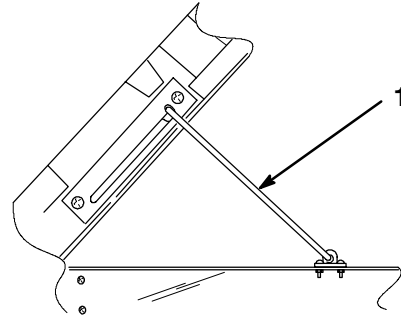
- Bed must be raised to perform some routine maintenance.

##### WHAT CAN HAPPEN

- Bed can fall and injure persons that are underneath a raised bed.

##### HOW TO AVOID THE HAZARD

- Always use prop rod to hold bed up before working under raised bed.
- Remove any load material from bed before working under raised bed.

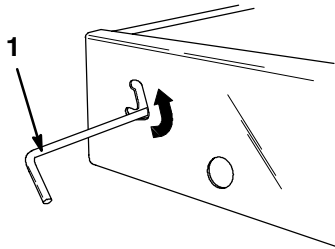


m-4865

Figure 2

1. Prop rod

2. Slide latch upward toward top of cutout in bed frame (Fig. 1).



m-4850

Figure 1

1. Latch

3. Lift up on latch with one hand while raising bed with other hand.
4. Pull up on prop rod to lock in place (Fig. 2).
5. Disconnect battery cables from battery.
6. Remove the rubber strap securing the battery to the battery base. Lift the battery out of the battery base.

7. Remove (2) flange head capscrews securing latch rod bracket to front of rear frame (Fig. 3). Remove and discard bracket, spring and latch rod.
8. Remove (2) flange head capscrews securing latch hook to underside of box (Fig. 3).

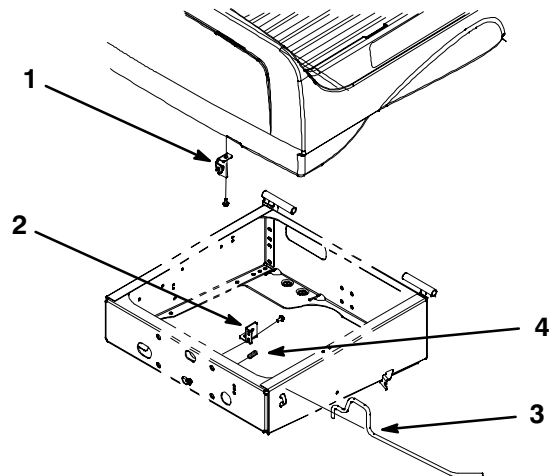
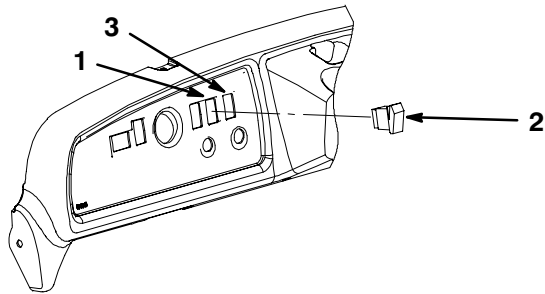


Figure 3

1. Latch rod bracket
2. Latch hook
3. Latch rod
4. Spring

9. Remove plug from hole in right side of dash (Fig. 4).

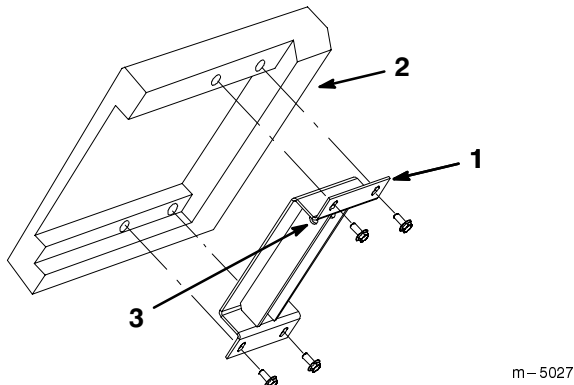


**Figure 4**

- |                 |                               |
|-----------------|-------------------------------|
| 1. Plugged hole | 3. Cut new hole (if required) |
| 2. Switch       |                               |

**Note:** If hole in dash is in use, measure over 1/2" and cut another .835" x 1.460" rectangular hole in dash. **Make sure not to damage any existing components, behind dash, when cutting hole.**

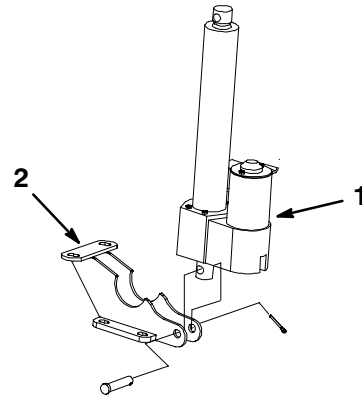
10. Plug switch into harness connector in dash. Insert switch into hole in dash (Fig. 4).
11. Remove cover to expose fuse block. Install new fuse into open slot in fuse block. Install cover.
12. Mount upper lift bracket to right, underside of bed with (4) 5/16-18 x 3/4" lg. capscrews. Bracket to be positioned so cross holes are forward (Fig. 5).



**Figure 5**

- |                       |                |
|-----------------------|----------------|
| 1. Upper lift bracket | 3. Cross holes |
| 2. Underside of bed   |                |

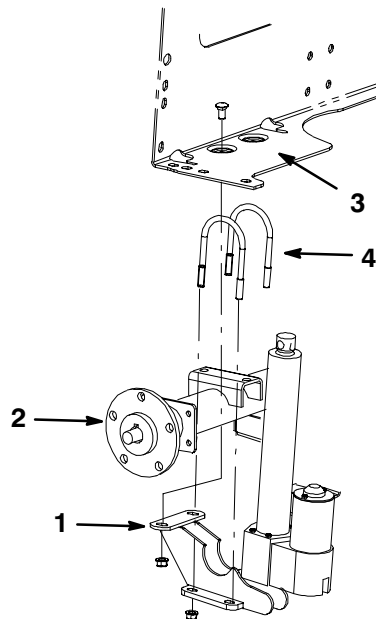
13. Mount bottom end of lift actuator to lift cylinder support with a clevis pin and cotter pin. Position components as shown in figure 6.



**Figure 6**

- |             |                          |
|-------------|--------------------------|
| 1. Actuator | 2. Lift cylinder support |
|-------------|--------------------------|

14. Loosely mount lift cylinder support to right end of rear axle with (2) U-bolts and (4) flange nuts while aligning mounting holes with holes in battery tray (Fig. 7).
15. Mount lift cylinder support to battery tray with (2) carriage bolts and (2) flange nuts (Fig. 7). Tighten all fasteners.
16. Plug actuator harness into vehicle harness connector, located near fuse block.



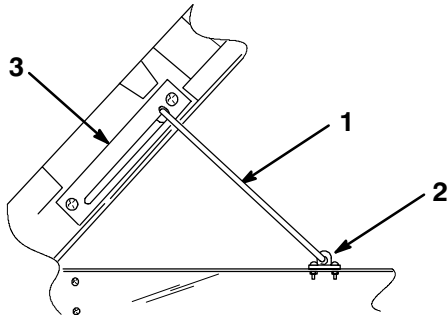
**Figure 7**

- |                          |                 |
|--------------------------|-----------------|
| 1. Lift cylinder support | 3. Battery tray |
| 2. Right end of axle     | 4. U-bolt (2)   |

17. Reinstall battery and connect cables.

18. Press switch downward to extend actuator rod until is aligned with mounting holes in upper lift bracket. Secure rod to bracket with clevis pin and cotter pin.
19. Remove capscrews and clip securing prop rod to frame rail (Fig. 8).

20. Remove capscrews securing prop rod bracket to underside of bed. Remove retainer securing rod to bracket and remove rod. (Fig. 8). Retain prop rod components for future use.



**Figure 8**

- |                  |                     |
|------------------|---------------------|
| 1. Prop rod      | 3. Prop rod bracket |
| 2. Prop rod clip |                     |
-

