

# TORO®

PART NO. 104-1395

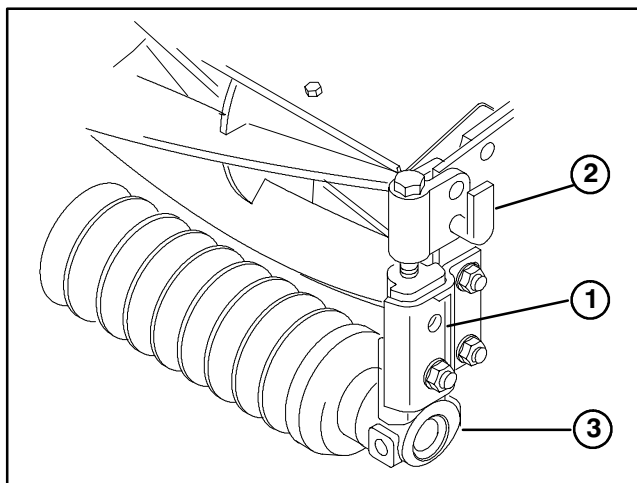
## INSTALLATION INSTRUCTIONS

### HIGH HEIGHT OF CUT KIT Reelmaster® 2000/3000 Series Cutting Unit

**Note:** Use only parts required for installation of kit on your model machine. Discard remaining parts.

#### Install Front Roller Brackets

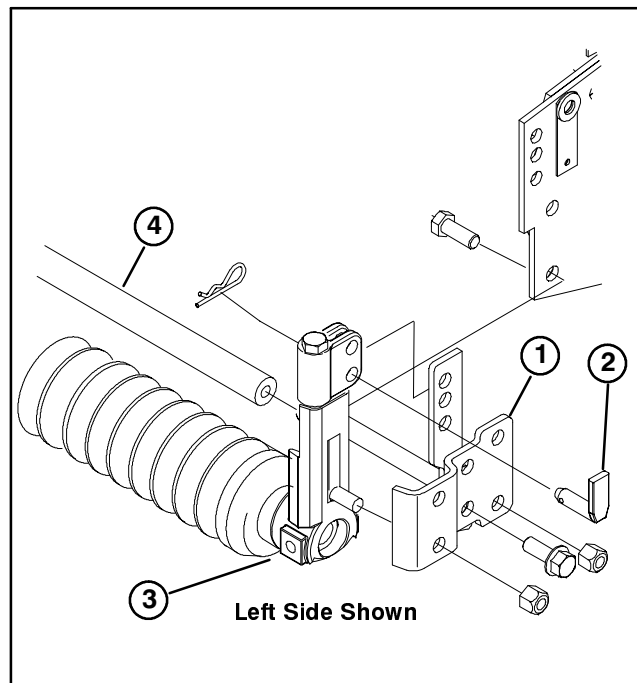
1. Remove height of cut pin and hairpin cotter securing each height of cut support to cutting unit (Fig. 1).
2. Remove (2) capscrews and locknuts securing angle bracket to each side of cutting unit (Fig. 1). Retain locknuts.
3. Remove carriage bolt and locknut securing height of cut bracket to angle bracket (Fig. 1). Discard angle bracket.



**Figure 1**

1. Angle bracket
2. Height of cut pin
3. Height of cut bracket

4. Loosely mount a new roller bracket (R.H. or L.H.) to appropriate height of cut bracket with carriage bolt and locknut previously removed (Fig. 2).
5. Loosely mount each end of 27" or 32" support shaft to inside of each roller bracket with a 3/8-16 x 1" lg. flange head capscrew (Fig. 2).
6. Loosely mount roller brackets to each side of cutting unit with (2) capscrews and locknuts previously removed (Fig. 2).
7. Install height of cut pin in hole for desired height of cut setting and secure with hairpin cotter.
8. Tighten all fasteners.



**Figure 2**

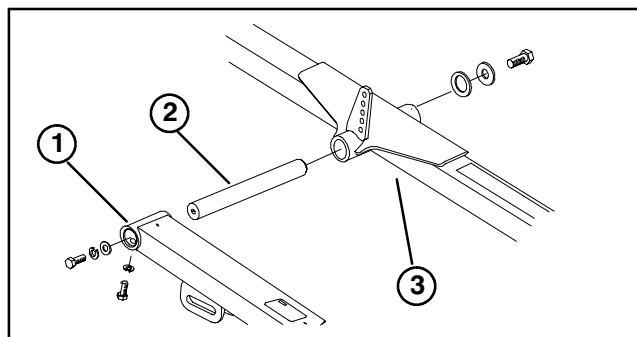
1. Angle bracket
2. Height of cut pin
3. Height of cut bracket
4. Support shaft

#### Replace Rear Cutting Unit Pivot Shaft

Lower cutting units to the floor, engage parking brake, shut off engine and remove key from ignition switch.

(Reelmaster 2300/2600 only)

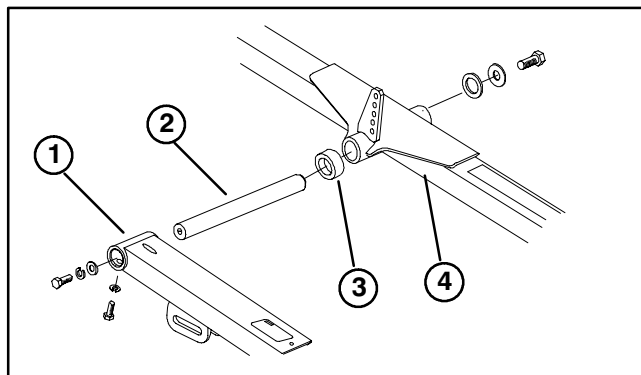
1. On rear cutting unit only, remove capscrew, flatwasher and thrust washer securing carrier frame to lift arm pivot shaft (Fig. 3). Slide carrier frame off pivot shaft.



**Figure 3**

1. Lift arm
2. Pivot shaft
3. Carrier frame

2. Remove screw, lockwasher and flatwasher securing end of lift arm pivot shaft to lift arm (Fig. 3).
3. Remove screw and lockwasher securing side of lift arm pivot shaft to lift arm (Fig. 3). Remove pivot shaft.
4. Mount new longer pivot shaft to lift arm with fasteners previously removed (Fig. 4). Make sure to use correct O.D. shaft supplied in kit. Discard other shaft.
5. Slide correct I.D. spacer onto pivot shaft (Fig. 4). Make sure to use correct I.D. spacer supplied in kit. Discard other spacer.



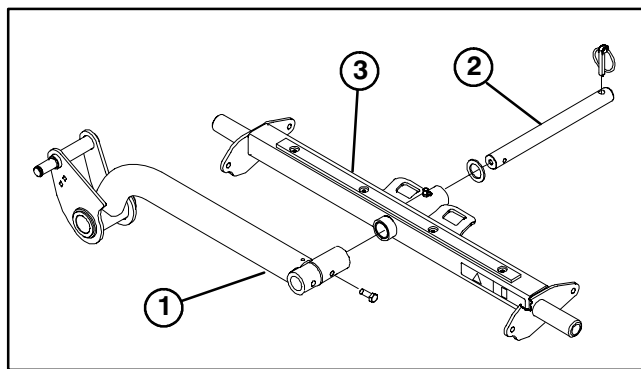
**Figure 4**

1. Lift arm
2. Pivot shaft
3. Spacer
4. Carrier frame

6. Slide carrier frame onto pivot shaft and secure with fasteners previously removed (Fig. 4).

**(Reelmaster 3100 only)**

1. On rear cutting unit only, remove lynch pin and thrust washer securing carrier frame to lift arm pivot shaft (Fig. 5). Slide carrier frame off pivot shaft.

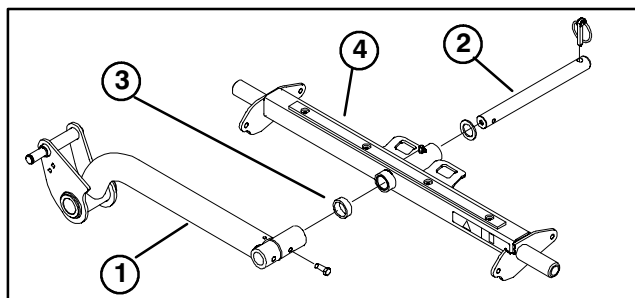


**Figure 5**

1. Lift arm
2. Pivot shaft
3. Carrier frame

2. Remove screw and securing lift arm pivot shaft to lift arm (Fig. 5). Remove and discard pivot shaft.
3. Mount new longer pivot shaft to lift arm with capscrew previously removed (Fig. 6). Make sure to use correct O.D. shaft supplied in kit. Discard other shaft.

4. Slide correct I.D. spacer onto pivot shaft (Fig. 6). Make sure to use correct I.D. spacer supplied in kit. Discard other spacer.



**Figure 6**

1. Lift arm
2. Pivot shaft
3. Spacer
4. Carrier frame

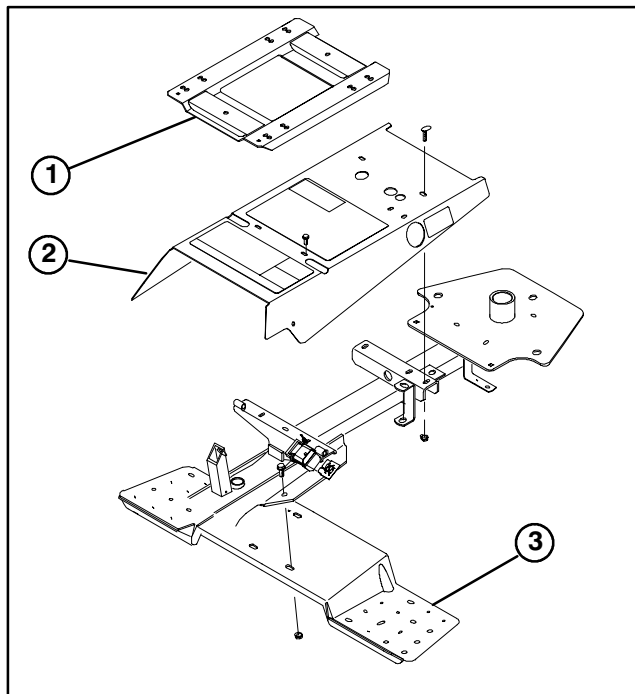
5. Slide carrier frame onto pivot shaft and secure with thrust washer and lynch pin previously removed (Fig. 4).

**Reposition Foot Step**

**(Reelmaster 2300/2600 only)**

**IMPORTANT:** The following procedure, Repositioning Foot Step, is not required if there is sufficient clearance between top of #1 cutting unit and foot step, when cutting unit is raised.

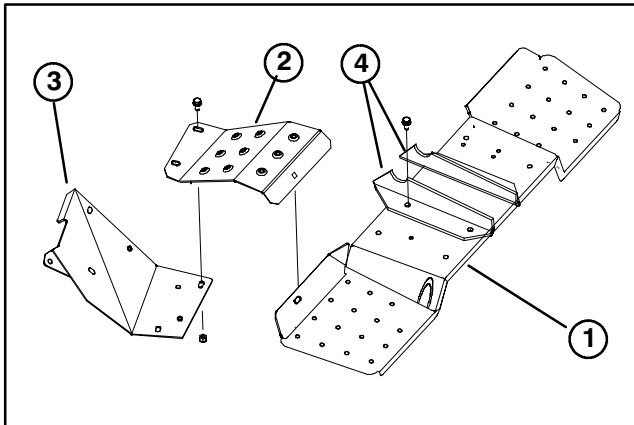
1. Remove seat base mounting pins and remove seat assembly.
2. Remove fasteners securing skirt assembly to frame and lift off skirt assembly (Fig. 7).



**Figure 7**

1. Seat base
2. Skirt assembly
3. Foot step

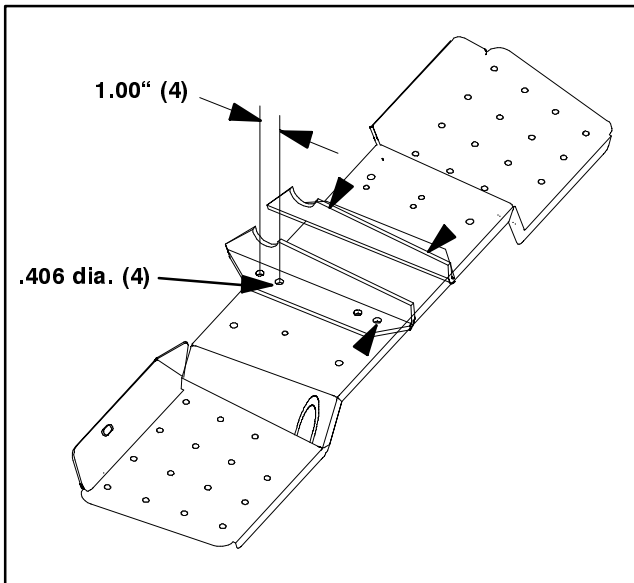
3. Remove fasteners securing foot rest shield to R.H. footrest (Fig. 8). Loosen fastener securing footrest shield to foot step. Retain fasteners for re-installation.
4. Remove fasteners securing foot step to frame brackets (Fig. 7 & 8). Remove foot step.



**Figure 8**

1. Foot step
2. Footrest shield
3. Right footrest
4. Foot step brackets

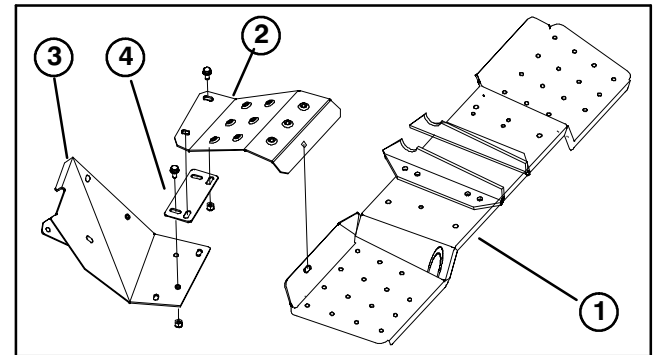
5. Using dimensions and locations shown in figure 9, locate, mark and drill (4) .406 dia. holes in foot step brackets.



**Figure 9**

6. Using new mounting holes and fasteners previously removed, remount foot step to frame.

**Note:** Foot step will now be positioned rearward for more cutting unit clearance.



**Figure 10**

1. Foot step
2. Footrest shield
3. Right footrest
4. Footrest plate

7. Loosely mount footrest shield to footstep with fastener previously removed.

8. Loosely mount footrest shield and new footrest plate to right footrest with (2) flange head screws and nuts (supplied in kit) and fasteners previously removed. Position components as shown in figure 10.

9. Tighten all fasteners.

