



# High Height of Cut Kit

## Reelmaster<sup>®</sup> 2300, 2600 and 3100–D

Part No. 104–1395

## Parts Catalog

### Ordering Replacement Parts

To order replacement parts, please supply: the part number, the quantity, and the description of each part desired.

### Understanding Reference Numbers

Each identified part in an illustration has a reference number. The reference number for a part also appears in the parts list, along with other information about the part.

This catalog uses two special reference number formats, one to indicate parts in a service assembly and another to indicate the quantity of a given part in an illustration.

### Service Assembly Reference Numbers

Parts in service assemblies have reference numbers in the form **a:b**. The **a** represents the reference number of the entire service assembly and the **b** represents a sequential number unique to each part within the service assembly.

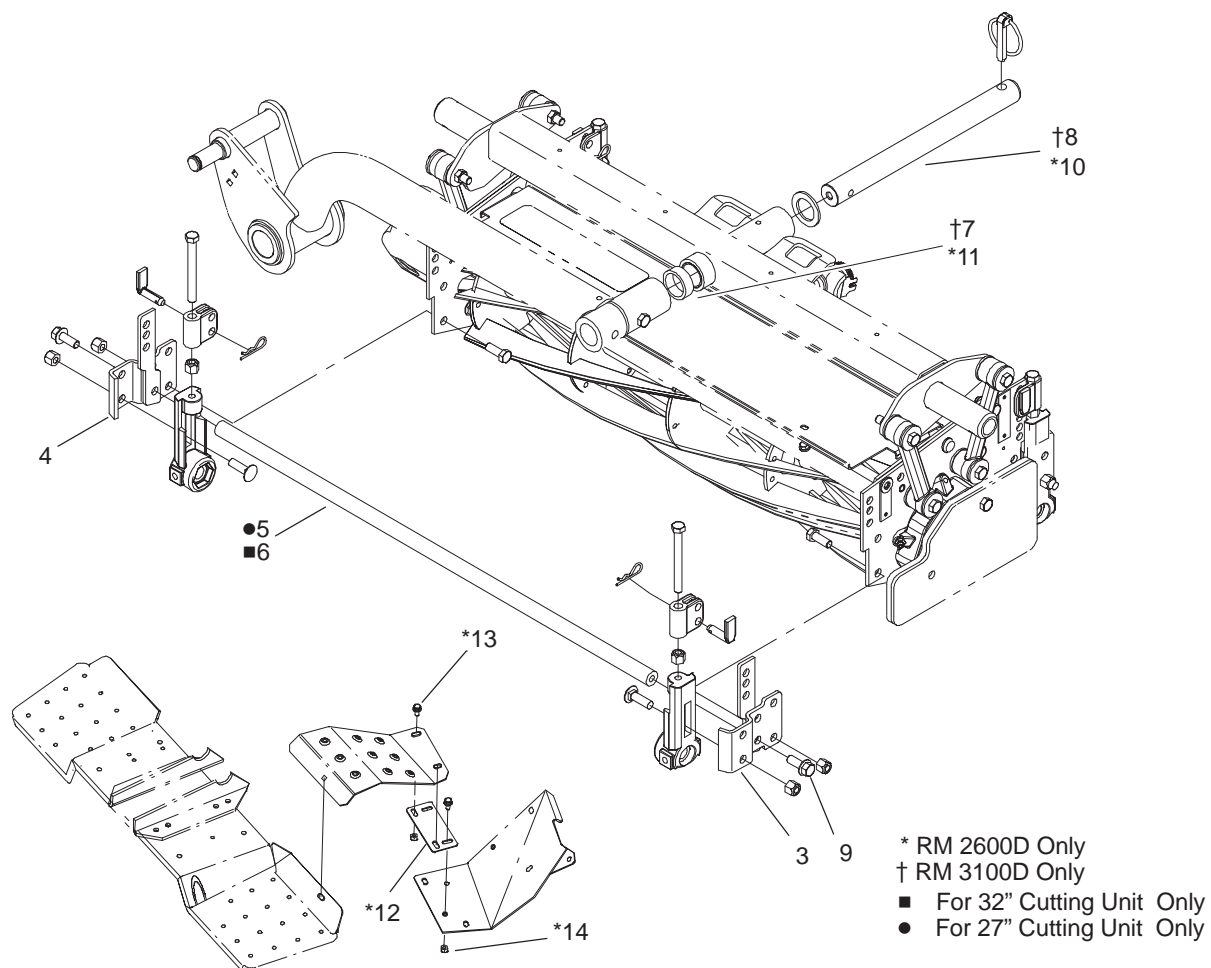
For example, a wheel assembly might be identified by reference number **6**, the tire by **6:1**, the valve by **6:2**, and the wheel by **6:3**. When you order the assembly identified by reference number **6**, you receive all parts identified by reference numbers **6:1**, **6:2**, and **6:3**. However, you may also order any part individually.

Reference numbers of this type appear in illustrations and in part lists.

### Reference Numbers Indicating Quantity

In an illustration, if a reference number indicates more than one part, the reference number has the form **nX y**. The **n** represents the quantity of the part, the **X** is the multiplication symbol, and the **y** represents the reference number.

For example, in an illustration, the reference number **2X 37** means that two of the parts identified by reference number **37** are indicated.



Sheet No.:0

## High Height of Cut Kit Assembly

Ref. No.	Part No.	Qty.	Description
3	104-1375-01	3	Bracket-Roller, LH
4	104-1376-01	3	Bracket-Roller, RH
5	104-1379	3	Shaft-Support, 27"
6	104-1391	3	Shaft-Support, 32"
7	63-0070	1	Spacer
8	104-1392	1	Shaft-C.u., Pivot
9	3234-11	6	Screw-HHF
10	105-0151	1	Shaft-C.u., Pivot
11	105-0152	1	Spacer
12	105-0153-01	1	Plate-Foot Rest
13	3234-14	2	Screw-HHF
14	3296-29	2	Nut-Lock

Ref. No.	Part No.	Qty.	Description