



72 in. Flex Deck[™]
Side Discharge Mower
Model No. 30799—210000001 and Up

Parts Catalog

Ordering Replacement Parts

To order replacement parts, please supply: the part number, the quantity, and the description of each part desired.

Understanding Reference Numbers

Each identified part in an illustration has a reference number. The reference number for a part also appears in the parts list, along with other information about the part.

This catalog uses two special reference number formats, one to indicate parts in a service assembly and another to indicate the quantity of a given part in an illustration.

Service Assembly Reference Numbers

Parts in service assemblies have reference numbers in the form **a:b**. The **a** represents the reference number of the entire service assembly and the **b** represents a sequential number unique to each part within the service assembly.

For example, a wheel assembly might be identified by reference number **6**, the tire by **6:1**, the valve by **6:2**, and the wheel by **6:3**. When you order the assembly identified by reference number **6**, you receive all parts identified by reference numbers **6:1**, **6:2**, and **6:3**. However, you may also order any part individually.

Reference numbers of this type appear in illustrations and in part lists.

Reference Numbers Indicating Quantity

In an illustration, if a reference number indicates more than one part, the reference number has the form **nX y**. The **n** represents the quantity of the part, the **X** is the multiplication symbol, and the **y** represents the reference number.

For example, in an illustration, the reference number **2X 37** means that two of the parts identified by reference number **37** are indicated.

Contents

Description	Page	Description	Page
Left Hand Deck Wing and Cover Assembly . . .	3	Center Deck Assembly No. 105-3664	9
Fork Caster and Wheel Assembly	4	Drive Shaft Assembly No. 100-1557	10
Left Hand Deck Wing Assembly No. 105-3663	5	Right Hand Wing and Cover Assembly	11
Center Deck, Arms and Covers Assembly	6	Right Hand Deck Wing Assembly No. 105-3662	13
Gear Box Assembly No. 104-3441	8		

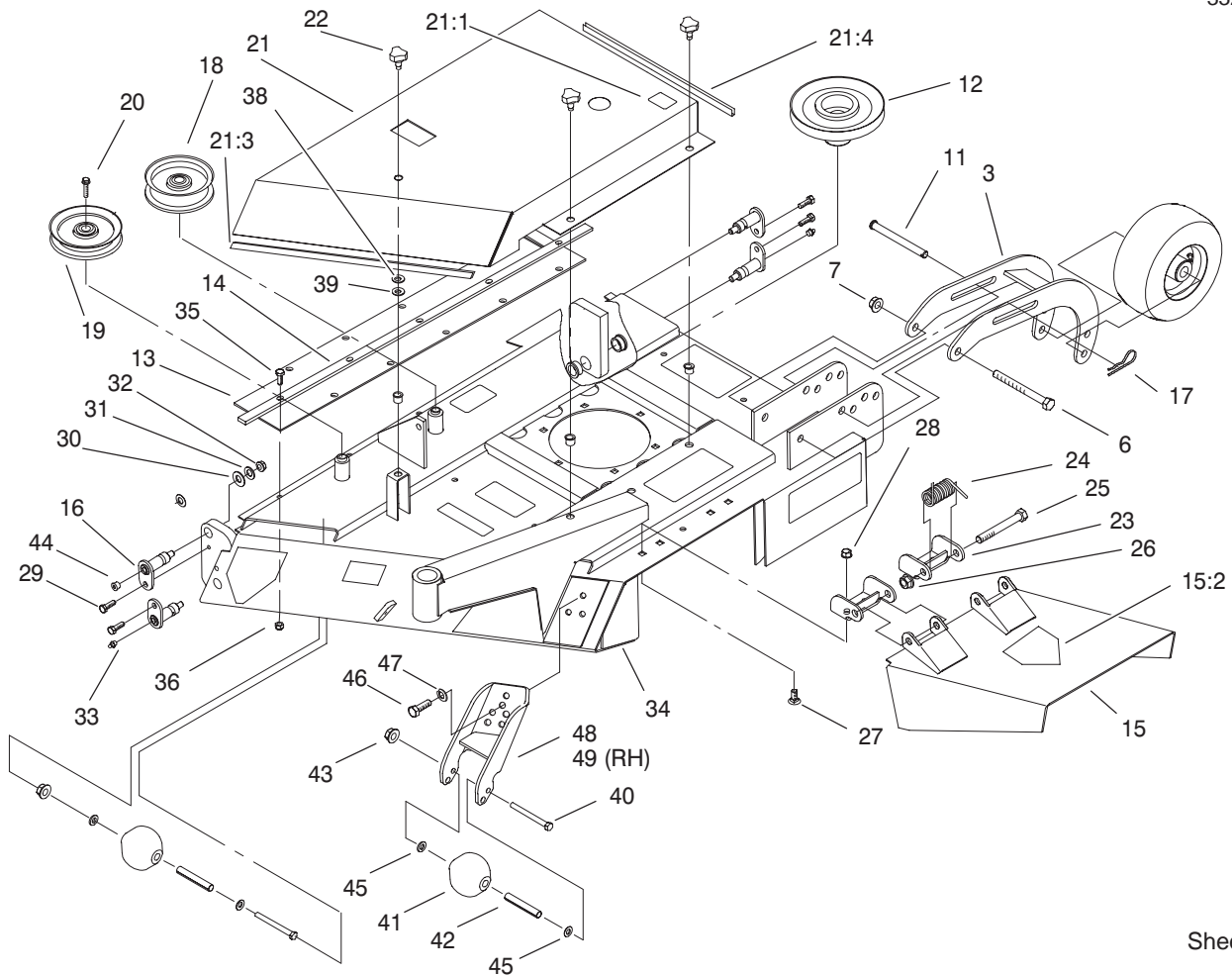
Accessories

Description	Model / Part No.	Description	Model / Part No.
Hight Lift Blade	23-2410	Tire-Foam Filled 8"	93-5974
Height Of Cut Spacers 1/4"	54-8810		

Part Description Abbreviations

Part descriptions in this catalog may include the following abbreviations.

Abbreviation	Meaning	Abbreviation	Meaning
AR	as required	HYD	hydraulic
ASM	assembly	INC	incorporated
CARR	carriage	LH	left hand
DEG	degrees	NI	nylon insert
FH	flat head	PPH	Phillips pan head
GA	gauge	PTH	Phillips truss head
HF	hex flange	PTO	power take off
HH	hex head	RH	right hand
HHF	hex head flange	SFH	slotted fillister head
HLH	hex lag head	SHH	slotted hex head
HJ	hex jam	SQH	square head
HOC	height-of-cut	SHWH	slotted hex washer head
HS	hex socket	SPH	slotted pan head
HSBH	hex socket button head	SRH	slotted round head
HSFH	hex socket flat head	STD	standard
HSH	hex socket head	TAP	self tapping
HWH	hex washer head	TTH	Torx truss head
HWHTF	hex washer head thread forming	WH	wing head

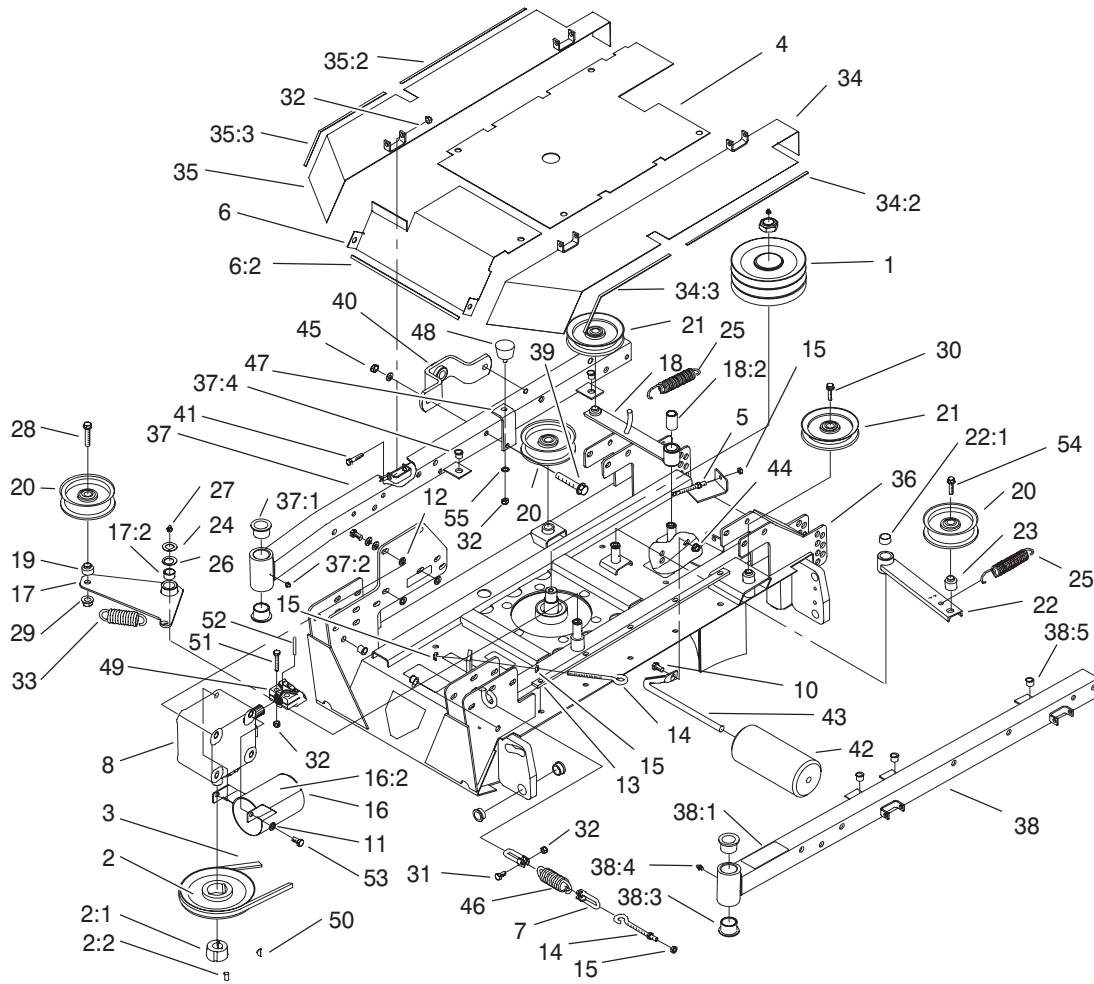


Sheet No.: 2

Left Hand Deck Wing and Cover Assembly

Ref. No.	Part No.	Qty.	Description
3	99-9806-01	2	Pivot Arm ASM
6	325-19	8	Screw-HH
7	32128-23	8	Nut-HF
11	100-5024	2	Pin-Clevis
12	99-9794	1	Spindle Pulley ASM
13	104-2503	1	Flap-Rubber
14	104-2504-01	1	Strap
15	104-9483	1	Deflector ASM
15:2	100-6582	1	Decal-Danger, Int'l
15:2	54-9220	1	Decal-Danger
16	99-9756	8	Pin Pivot ASM
17	3290-343	2	Pin-Hair
18	69-5430-03	1	Pulley-Idler, Flat
19	63-1540-03	1	Pulley-Idler
20	3234-32	2	Screw-HHF
21	104-1258	1	LH Cover ASM-Top
21:1	93-3709	1	Decal - No Step
21:3	27-6620	1	Trim-Hood
21:4	37-9650	1	Trim-Tool Box
22	77-3620	13	Knob
23	51-1530	2	Bracket - Hinge
24	51-1550	2	Spring
25	325-17	2	Screw-HH
26	32128-23	2	Nut-HF
27	3231-27	4	Screw-CARR
28	3290-357	4	Nut-Flange, Lock

Ref. No.	Part No.	Qty.	Description
29	32144-70	8	Screw-HH
30	256-305	4	Washer-Thrust
31	3256-4	8	Washer-Flat
32	3296-39	8	Nut-Lock, NI
33	302-2	4	Fitting-Grease
34	105-3663	1	Wing Deck ASM-LH
35	322-4	11	Screw-HH
36	3296-29	11	Nut-Lock
38	3256-24	11	Washer-Flat
39	32151-72	11	Ring-Retaining
40	323-23	6	Screw-HH
41	29-4820	6	Roller
42	94-2500	6	Tube-Wheel Spacer
43	3296-39	6	Nut-Lock, NI
44	285-17	4	Plug-Pipe
45	3256-38	12	Washer-Flat
46	323-6	6	Screw-HH
47	3253-21	6	Washer-Lock
48	105-2570-01	1	Bracket-Roller, LH
49	105-2573-01	1	Bracket-Roller, RH



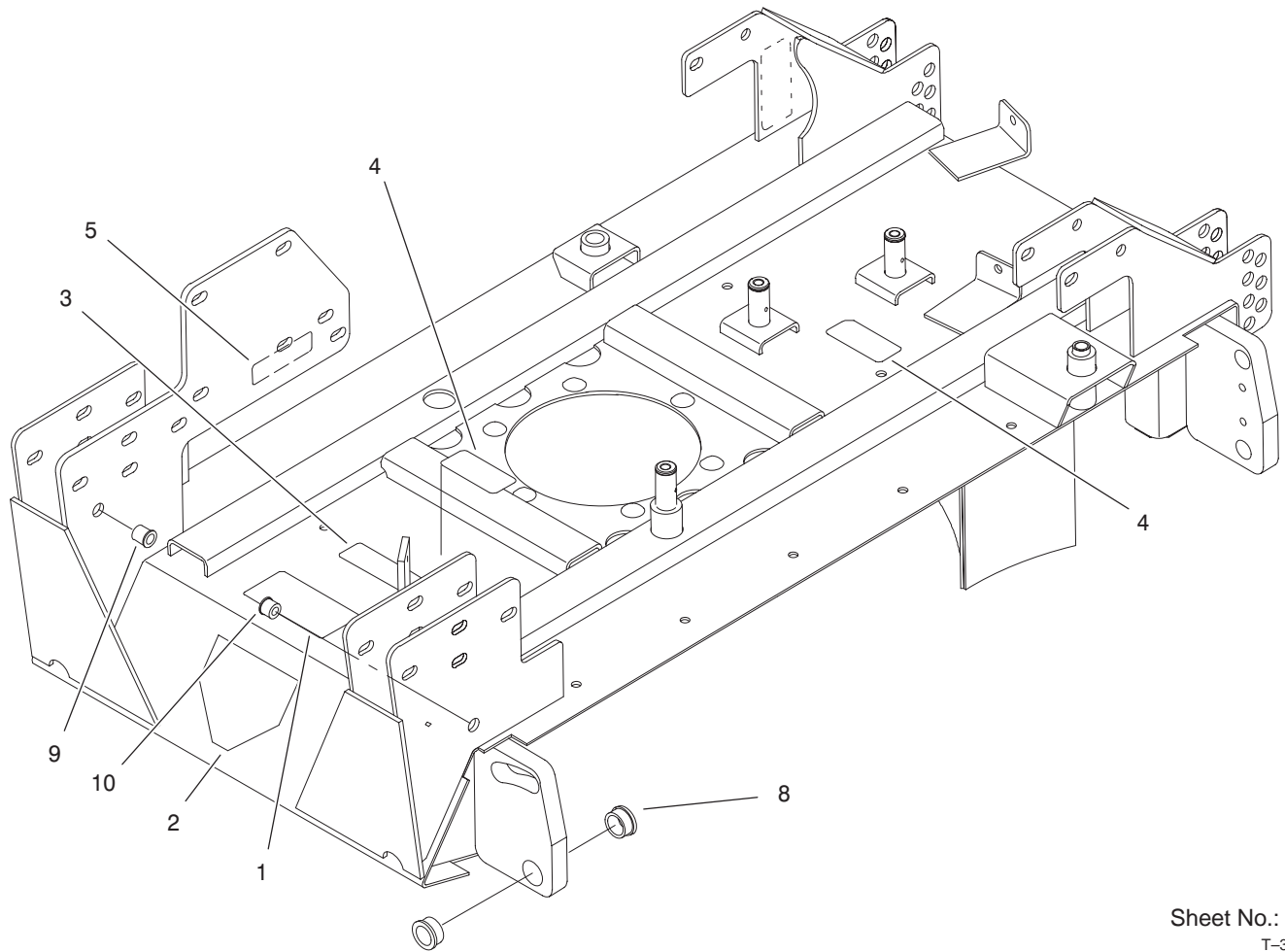
Sheet No.: 3

Center Deck, Arms and Covers Assembly

Ref. No.	Part No.	Qty.	Description
1	99-9789	1	Spindle Pulley ASM
2	104-4600-03	1	Spindle Pulley ASM
2:1	23-1640	1	Bushing-Taperlock
2:2	3247-4	2	Screw-Set
3	99-9770	1	Belt-V
4	99-9831-03	1	Cover-Top Center
5	100-6199	2	Rod-Tensioner
6	104-1275	1	Cover-Top Center
6:2	38-4080	1	Trim-Hood
7	104-1270	2	Shackle
8	104-3441	1	Box-Gear
10	323-4	1	Screw-HH
11	3253-21	5	Washer-Lock
12	3256-24	23	Washer-Flat
13	100-8007-01	1	Strap
14	100-6177	2	Rod-Tension
15	3217-6	9	Nut-Hex
16	99-8408	1	PTO Guard ASM
16:2	93-7283	1	Decal-Danger
17	104-4601	1	Idler Tensioner ASM
17:2	256-188	1	Bushing Arm
18	104-4602	1	Idler Arm ASM
18:2	256-188	1	Bushing
19	69-6970	1	Spacer-Idler, Flat
20	69-5430-03	3	Pulley-Idler, Flat
21	63-1540-03	2	Pulley-Idler

Ref. No.	Part No.	Qty.	Description
22	69-6610-01	1	Arm-Idler
22:1	256-188	1	Bushing
23	99-9830	1	Spacer
24	32120-72	3	Ring-Snap
25	76-1670-03	2	Spring-Extension
26	3-6498	3	Washer-Thrust
27	302-2	3	Fitting-Grease
28	3234-27	2	Screw-Flange
29	32128-23	3	Nut-HF
30	3234-32	2	Screw-HHF
31	322-4	2	Screw-HH
32	3296-29	8	Nut-Lock
33	85-6390	1	Spring-Extension
34	104-1273	1	Cover, LH Flap
34:2	57-6040	1	Trim-Front Guard
34:3	95-5686	2	Trim
35	104-1272	1	Cover, RH Flap
35:2	57-6040	1	Trim-Front Guard
35:3	95-5686	2	Trim
36	105-3664	1	Center Deck ASM
37	104-1264	1	Arm ASM-RH
37:1	94-1291	2	Bushing-Special
37:2	302-5	1	Fitting-Grease
37:4	32148-9	2	Nut-Insert
*37:5	100-8038	1	Decal-HOC Hanger
38	104-1278	1	Arm ASM-LH

* Not illustrated

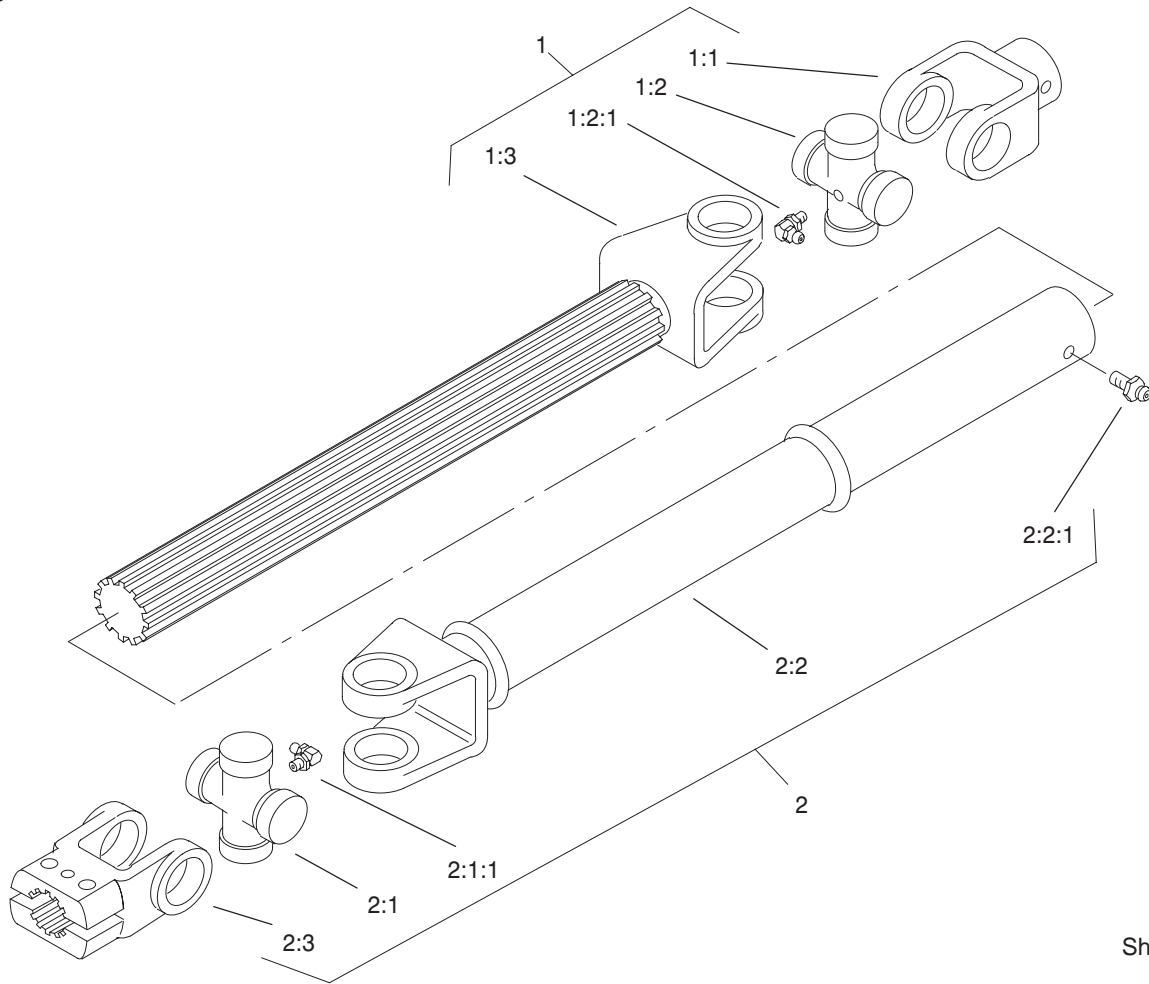


Sheet No.: A3
T-3521

Center Deck Assembly No. 105-3664

Ref. No.	Part No.	Qty.	Description
1	100-8046	1	Decal-Belt Routing
2	100-6583	1	Decal-Danger
3	100-6578	1	Decal-Danger
4	93-6696	2	Decal-Loaded, Spring
5	93-6697	1	Decal-Lube
8	99-9769	4	Bushing-Special
9	32148-10	1	Insert-Threaded
10	32148-9	1	Nut-Insert

Ref. No.	Part No.	Qty.	Description

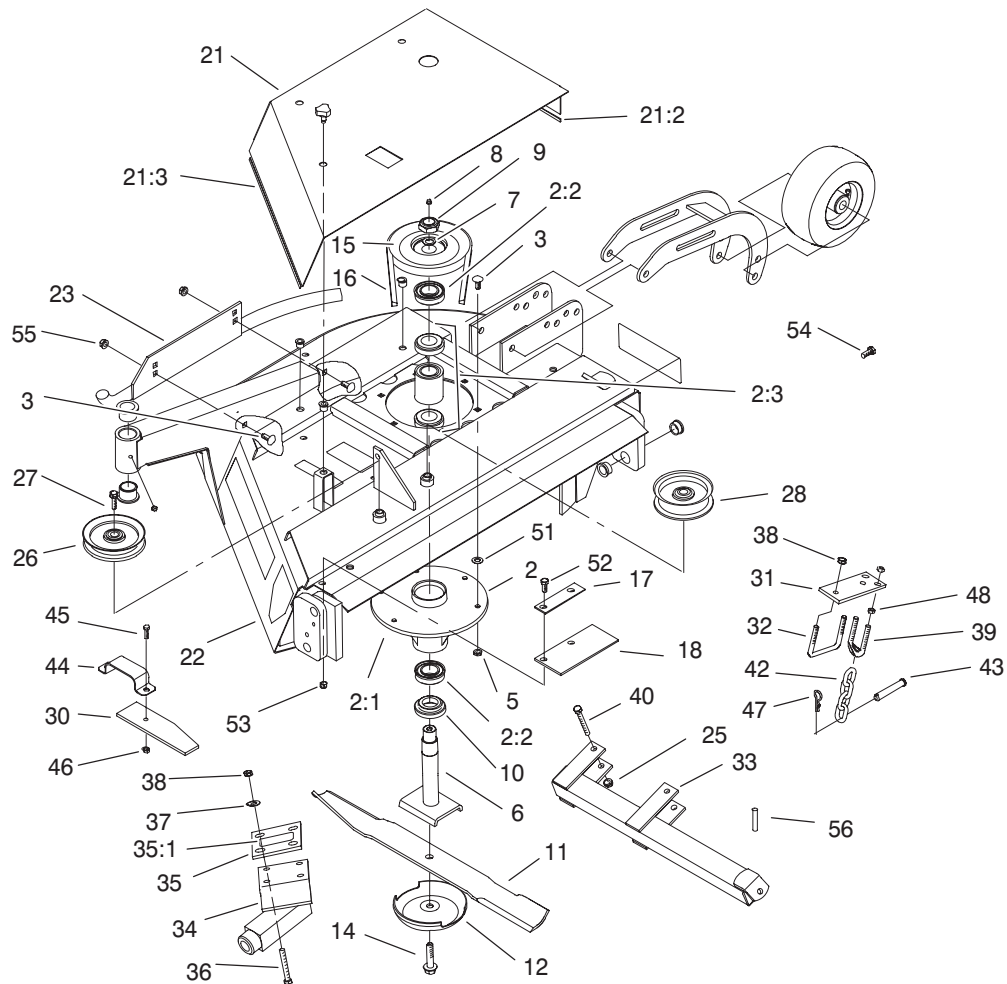


Sheet No.: A4
T-3522

Drive Shaft Assembly No. 100-1557

Ref. No.	Part No.	Qty.	Description
1	104-1293	1	Slip Yoke Shaft ASM
1:1	62-3800	1	Yoke-End
1:2	54-9180	1	U-Joint Kit
1:2:1	62-3820	1	Fitting-Grease
1:3	104-1295	1	Slip Yoke-Shaft
2	104-1294	1	Slip Yoke Tube ASM
2:1	54-9180	1	U-Joint Kit
2:1:1	62-3820	1	Fitting-Grease
2:2	104-1296	1	Slip Yoke-Tube
2:2:1	302-58	1	Fitting-Grease
2:3	54-9040	1	Yoke-End

Ref. No.	Part No.	Qty.	Description

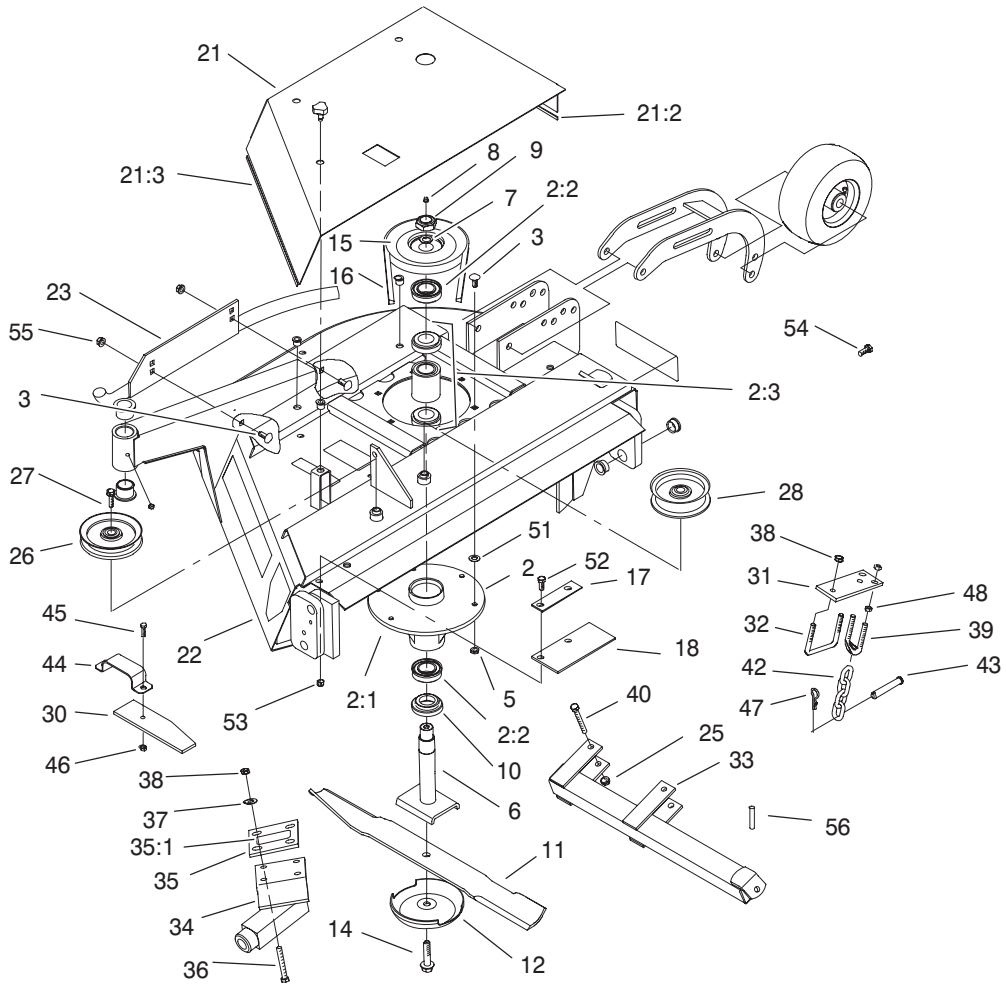


Sheet No.: 4

Right Hand Wing and Cover Assembly

Ref. No.	Part No.	Qty.	Description
2	104-4603	3	Spindle ASM
2:1	69-1530	1	Housing-Spindle
2:2	253-154	2	Seal-Oil
2:3	71-2530	1	Kit-Bearing/Spacer
3	3231-22	20	Screw-CARR
5	32128-21	18	Nut-HF
6	99-9826-03	3	Spindle Shaft ASM
7	3-8514	3	Thrust Washer
8	302-2	3	Fitting-Grease
9	3296-49	3	Nut-Lock NI
10	92-9800	3	Spacer-Shaft, Spindle
11	29-5530-03	3	Blade
12	99-9827	3	Cup-Anti Scalp
14	26-1820	3	Capscrew
15	99-9795	1	Spindle Pulley ASM
16	99-9771	2	Belt-V
17	104-1267-01	1	Strap
18	104-1268	1	Flap-Rubber
21	104-1274	1	RH Cover-Top
21:2	37-9650	1	Trim-Tool Box
21:3	27-6620	1	Trim-Hood
22	105-3662	1	Wing Deck ASM-RH
23	93-4519-01	1	Skid-RH
25	3296-39	2	Nut-Lock, NI
26	63-1540-03	1	Pulley-Idler
27	3234-32	2	Screw-HHF

Ref. No.	Part No.	Qty.	Description
28	69-5430-03	1	Pulley-Idler, Flat
30	104-1269-03	2	Bracket-Hose
31	99-9804-01	1	Bracket-Rear Lift, RH
32	99-9803	1	U-Bolt
33	100-4169-01	1	Lift Arm ASM,
34	99-9800-01	1	Push Arm ASM
35	104-1257	1	Bracket-Push Arm ASM
35:1	93-6696	1	Decal-Loaded, Spring
36	323-13	4	Screw-HH
37	3256-4	4	Washer-Flat
38	32128-19	6	Nut-HF
39	96-1259	1	U-Bolt
40	323-14	2	Screw-HH
42	95-6231	1	Chain-HOC
43	283-55	1	Pin-Clevis
44	93-9928	1	Clamp - Hose
45	321-6	2	Screw-HH
46	3296-42	2	Nut-Lock, NI
47	3290-355	1	Pin-Hair
48	3219-3	4	Nut-HH
51	3256-24	1	Washer-Flat
52	322-4	2	Screw-HH
53	3296-29	2	Nut-Lock
54	323-5	4	Screw-HH
55	3290-357	2	Nut-Flange, Lock

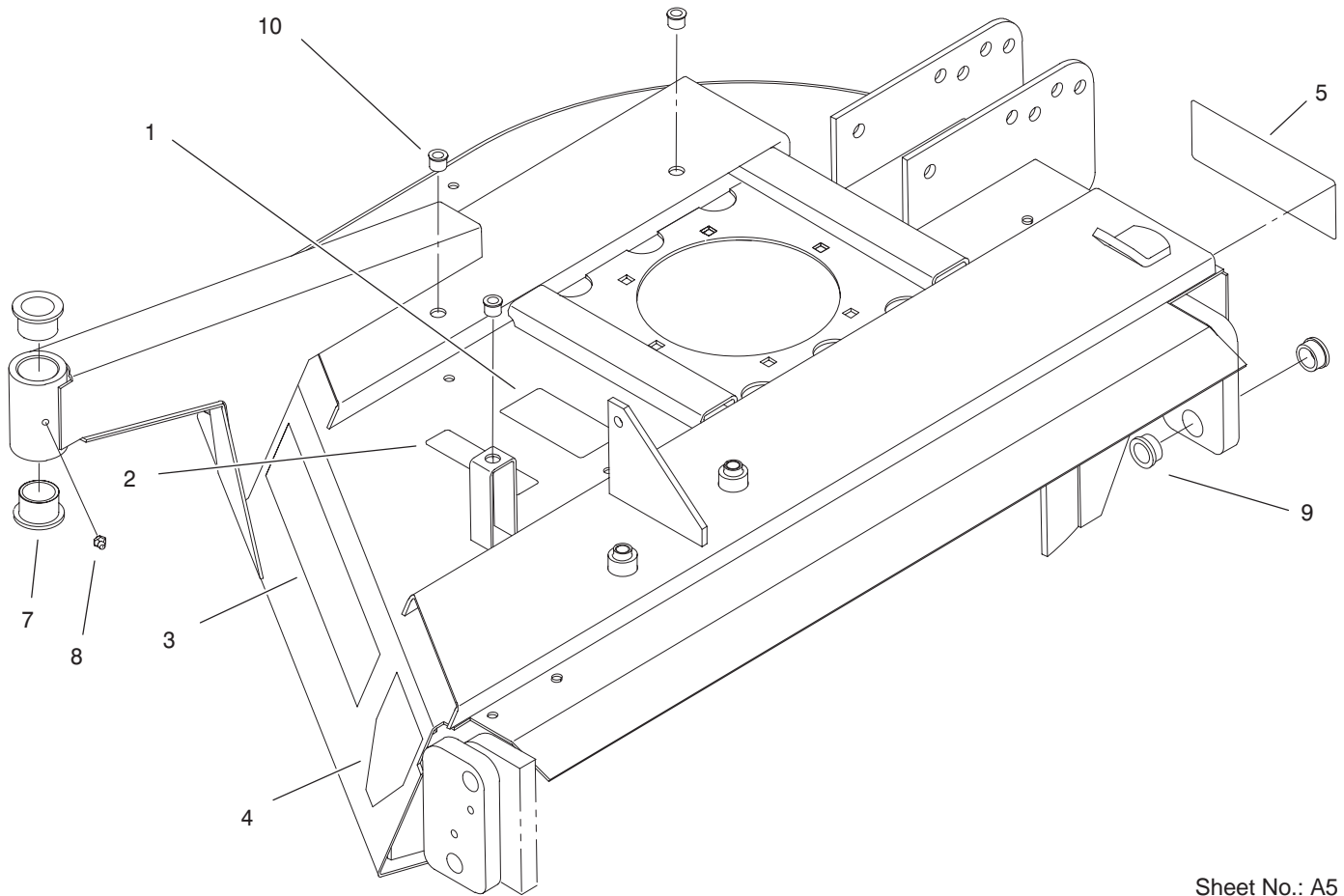


Sheet No.: 4

Right Hand Wing and Cover Assembly

Ref. No.	Part No.	Qty.	Description
56	32121-34	1	Pin-Roll

Ref. No.	Part No.	Qty.	Description
----------	----------	------	-------------



Sheet No.: A5
T-3523

Right Hand Deck Wing Assembly No. 105-3662

Ref. No.	Part No.	Qty.	Description
1	100-8046	1	Decal-Belt Routing
2	100-6578	1	Decal-Danger
3	104-1263	1	Decal-Flex 72
4	100-6582	1	Decal-Danger, Int'l
5	104-7449	1	Decal HOC
7	94-1291	2	Bushing-Special
8	302-5	1	Fitting-Grease
9	99-9769	2	Bushing-Special
10	32148-9	3	Nut-Insert

Ref. No.	Part No.	Qty.	Description

