



**Count on it.**

**Parts Catalog**

**Snow Thrower  
Compact Tool Carrier**

Model No. 22585—Serial No. 32000001 and Up



# Ordering Replacement Parts

To order replacement parts, please supply the part number, the quantity, and the description of each part desired.

## Understanding Reference Numbers

Each identified part in an illustration has a reference number. The reference number for a part also appears in the parts list, along with other information about the part.

This catalog uses two special reference number formats, one to indicate parts in a service assembly and another to indicate the quantity of a given part in an illustration.

## Service Assembly Reference Numbers

Parts in service assemblies have reference numbers in the form a:b. The a represents the reference number of the entire service assembly and the b represents a sequential number unique to each part within the service assembly.

For example, a wheel assembly might be identified by reference number 6, the tire by 6:1, the valve by 6:2, and the wheel by 6:3. When you order the assembly identified by reference number 6, you receive all parts identified by reference numbers 6:1, 6:2, and 6:3. However, you may also order any part individually. Reference numbers of this type appear in illustration and in parts lists.

## Reference Numbers Indicating Quantity

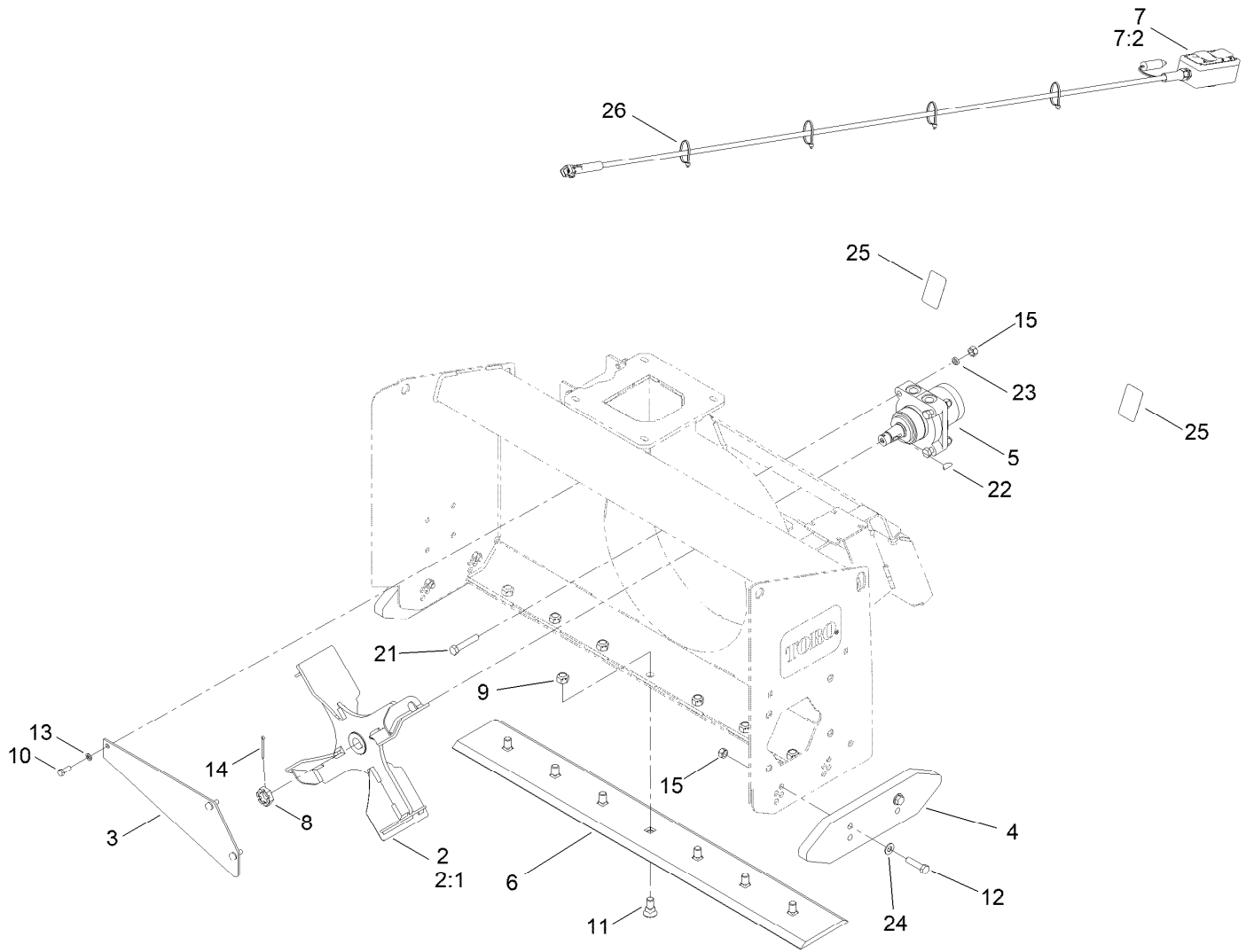
In an illustration, if a reference number indicates more than one part, the reference number has the form nX y. The n represents the quantity of the part, the X is the multiplication symbol, and the y represents the reference number.

For example, in an illustration, the reference number 2X 37 means that two of the parts identified by reference number 37 are indicated.

# Contents

Housing Assembly ..... 4  
Chute Assembly ..... 6  
Hydraulic Assembly ..... 8

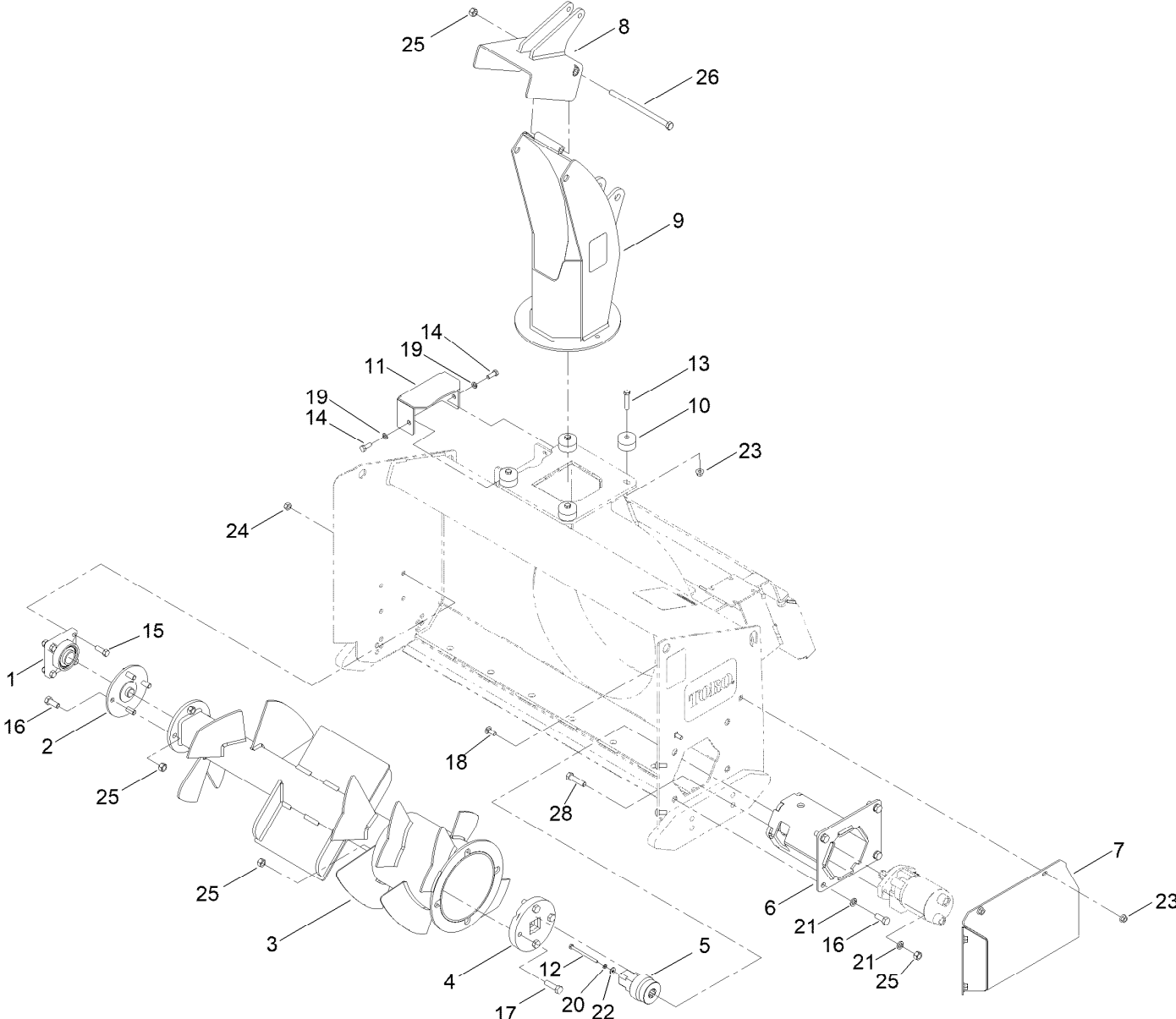
# Housing Assembly



## Housing Assembly (continued)

<i>Ref.</i>	<i>Part Number</i>	<i>Qty.</i>	<i>Description</i>	<i>Ref.</i>	<i>Part Number</i>	<i>Qty.</i>	<i>Description</i>
2	144-1256	1	Impeller	11	144-2510	7	Bolt-Plow
2:1	144-2511	1	Kit-Seal	12	325-8	4	Screw-HH
3	144-1266	1	Plate-Impeller	13	3253-21	5	Washer-Lock
4	144-1269	2	Shoe-Steel	14	3272-20	1	Pin-Cotter
4	144-2504	2	Shoe-Poly	15	32153-5	8	Nut-Hex
5	144-1272	1	Motor-Impeller	21	325-11	4	Screw-HH
6	144-1274	1	Plate-Leading Edge	22	3257-42	1	Key-Woodruff
7	144-2509	1	Toro Elc Box 2 Switch ASM	23	AU8LW81108	4	Washer-Lock, Split 1/2"x.175"th
7:2	144-2519	1	Decal-Chute Control	24	3256-26	4	Washer-Flat
8	99-3139	1	Nut-Slotted	25	144-7107	1	Kit-Reflector
9	105-0369	7	Nut-Crownlock	26	3290-378	4	Tie-Cable
10	323-6	5	Screw-HH				

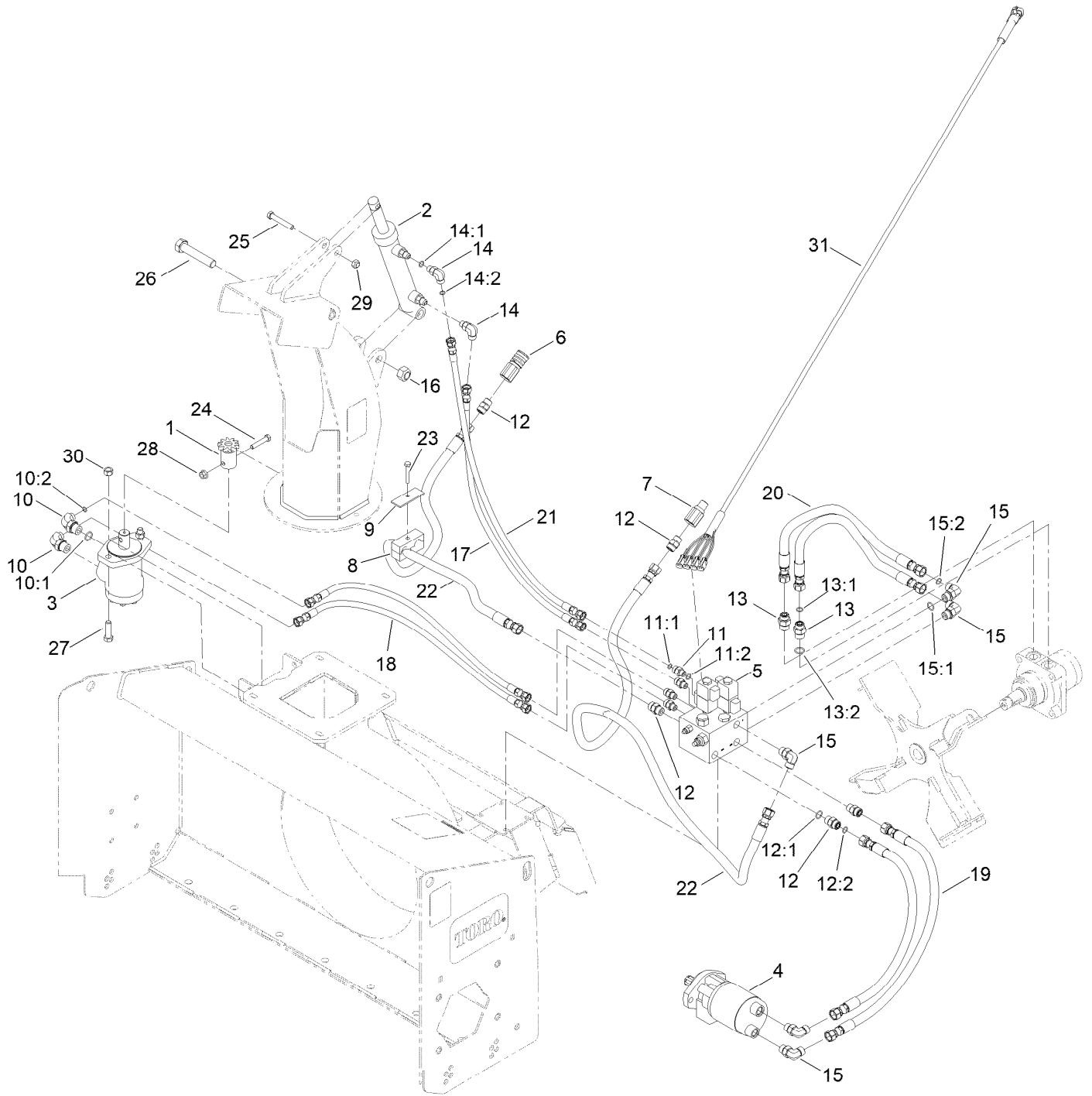
# Chute Assembly



## Chute Assembly (continued)

<i>Ref.</i>	<i>Part Number</i>	<i>Qty.</i>	<i>Description</i>	<i>Ref.</i>	<i>Part Number</i>	<i>Qty.</i>	<i>Description</i>
1	144-1252	1	Bearing	15	324-5	4	Screw-HH
2	144-1257	1	Plate	16	325-5	8	Screw-HH
3	144-1258	1	Paddle ASM	17	325-7	4	Screw-HH
4	144-1263	1	Coupler-Paddle/Motor	18	3231-2	4	Bolt-CARR
5	144-1262	1	Adapter- Motor	19	3253-21	2	Washer-Lock
6	144-1259	1	Housing-Paddle Motor	20	3253-3	1	Washer-Lock
7	144-1261	1	Housing- Hose Protector	21	3253-7	6	Washer-Lock
8	144-1253	1	Deflector	22	3256-2	1	Washer-Flat
9	144-2518	1	Chute	23	32128-29	8	Nut-Lock, Flange
10	144-1268	4	Mount-Deflector	24	32152-9	4	Nut-Hex
11	144-1270	1	Cover-Chute Motor Shaft	25	32153-5	11	Nut-Hex
12	321-28	1	Screw-HH	26	9114314	1	Screw-HH
13	323-10	4	Screw-HH	28	325-8	2	Screw-HH
14	323-6	2	Screw-HH				

# Hydraulic Assembly





## Hydraulic Assembly (continued)

<i>Ref.</i>	<i>Part Number</i>	<i>Qty.</i>	<i>Description</i>	<i>Ref.</i>	<i>Part Number</i>	<i>Qty.</i>	<i>Description</i>
1	144-1254	1	Gear	14:1	237-22	1	O-Ring
2	144-1260	1	Cylinder - ASM	14:2	237-42	1	O-Ring
3	144-1267	1	Motor-Chute	15	340-98	5	Fitting-Elbow, 90 DEG
4	144-1271	1	Motor-Paddle ASM	15:1	237-79	1	O-Ring
5	144-1273	1	Valve ASM	15:2	237-30	1	O-Ring
6	131-6058	1	Fitting-Quick Coupling	16	120-7252	1	Nut-Lock
7	131-6057	1	Fitting-Quick Coupling	17	144-1276	1	Hose ASM - HYD
8	137-3896	1	Clamp	18	144-1277	2	Hose ASM - HYD
9	137-3898	1	Bracket-Clamp	19	144-1278	2	Hose ASM - HYD
10	340-130	2	Fitting-Elbow 90	20	144-1279	2	Hose ASM - HYD
10:1	237-22	1	O-Ring	21	144-1295	1	Hose ASM - HYD
10:2	237-80	1	O-Ring	22	144-1296	2	Hose ASM - HYD
11	340-2	4	Fitting-Straight	23	322-10	1	Screw-HH
11:1	237-22	1	O-Ring	24	323-10	1	Screw-HH
11:2	237-42	1	O-Ring	25	324-11	1	Screw-HH
12	340-4	5	Fitting-Straight	26	328-7	1	Screw-HH
12:1	237-30	1	O-Ring	27	325-7	2	Screw-HH
12:2	237-79	1	O-Ring	28	32128-29	1	Nut-Lock, Flange
13	340-6	2	Fitting-Straight	29	32152-9	1	Nut-Hex
13:1	237-30	1	O-Ring	30	32153-5	2	Nut-Hex
13:2	237-80	1	O-Ring	31	144-2521	1	Harness-Wire
14	340-77	2	Fitting-Elbow, 90 DEG				

**Notes:**

**Notes:**



**Count on it.**