



3' Trencher Boom and Bar Dingo[®] and Dingo TX Attachment Model No. 22961

Parts Catalog

Ordering Replacement Parts

To order replacement parts, please supply: the part number, the quantity, and the description of each part desired.

Understanding Reference Numbers

Each identified part in an illustration has a reference number. The reference number for a part also appears in the parts list, along with other information about the part.

This catalog uses two special reference number formats, one to indicate parts in a service assembly and another to indicate the quantity of a given part in an illustration.

Service Assembly Reference Numbers

Parts in service assemblies have reference numbers in the form **a:b**. The **a** represents the reference number of the entire service assembly and the **b** represents a sequential number unique to each part within the service assembly.

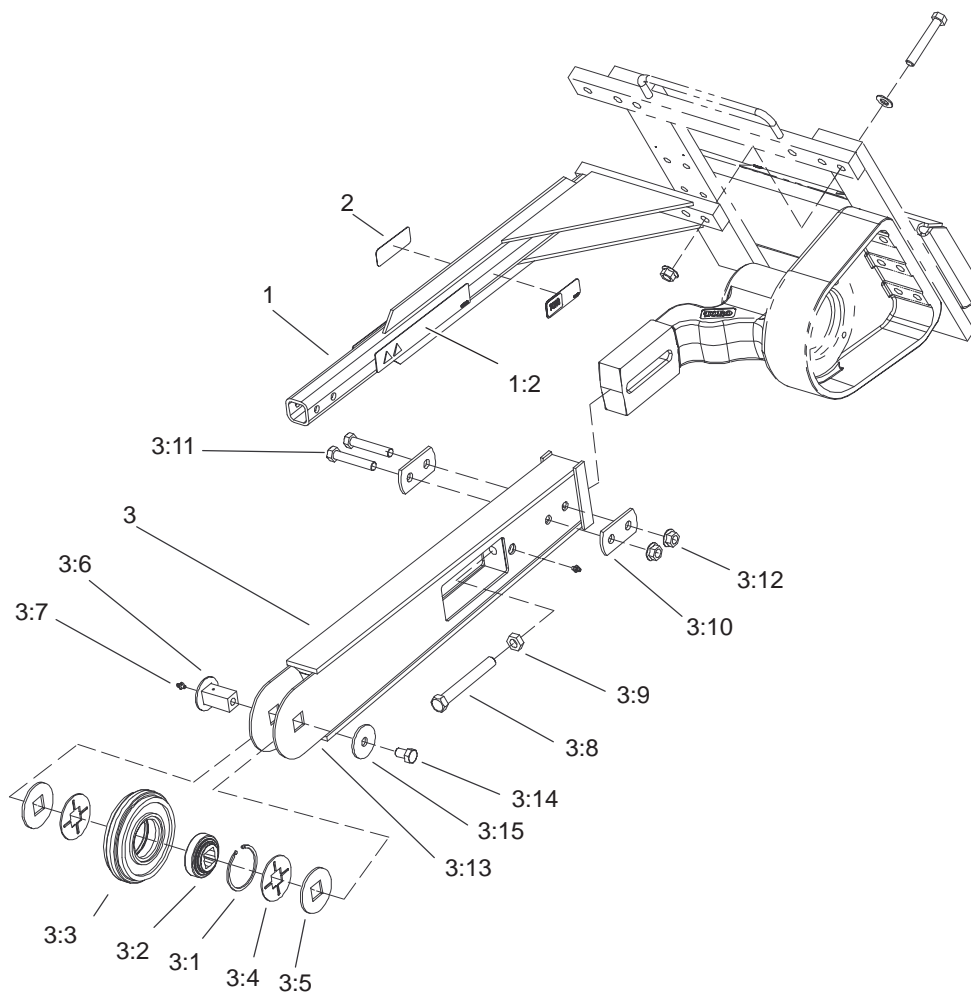
For example, a wheel assembly might be identified by reference number **6**, the tire by **6:1**, the valve by **6:2**, and the wheel by **6:3**. When you order the assembly identified by reference number **6**, you receive all parts identified by reference numbers **6:1**, **6:2**, and **6:3**. However, you may also order any part individually.

Reference numbers of this type appear in illustrations and in part lists.

Reference Numbers Indicating Quantity

In an illustration, if a reference number indicates more than one part, the reference number has the form **nX y**. The **n** represents the quantity of the part, the **X** is the multiplication symbol, and the **y** represents the reference number.

For example, in an illustration, the reference number **2X 37** means that two of the parts identified by reference number **37** are indicated.



Sheet No.: 0

Trencher Boom and Bar Assembly

Ref. No.	Part No.	Qty.	Description
1	104-1939	1	Safety Rail ASM,
1:2	99-9952	2	Decal-Danger
2	98-4683	2	Decal-Attachment, Dingo
3	104-1949	1	Boom ASM, 36in
3:1	104-1945	1	Ring-Retaining
3:2	104-1995	1	Bearing
3:3	104-1951	1	Roller-Nose
3:4	104-1943	2	Spacer-Roller
3:5	104-1942	2	Cap-Roller
3:6	104-1955	1	Pin ASM
3:7	302-5	2	Fitting-Grease
3:8	104-1941	1	Bolt-Adjustment
3:9	104-1944	1	Nut-Jam
3:10	104-1983-03	2	Plate-Support
3:11	327-14	2	Screw-HH
3:12	32128-50	2	Nut - Flange
3:13	104-1963-03	1	Boom ASM,
3:14	327-2	1	Screw-HH
3:15	104-5901	1	Washer

Ref. No.	Part No.	Qty.	Description