



14" Trim & Edge String Trimmer

Model No. 51350—210000001 and Up

Parts Catalog

Ordering Replacement Parts

To order replacement parts, please supply: the part number, the quantity, and the description of each part desired.

Understanding Reference Numbers

Each identified part in an illustration has a reference number. The reference number for a part also appears in the parts list, along with other information about the part.

This catalog uses two special reference number formats, one to indicate parts in a service assembly and another to indicate the quantity of a given part in an illustration.

Service Assembly Reference Numbers

Parts in service assemblies have reference numbers in the form **a:b**. The **a** represents the reference number of the entire service assembly and the **b** represents a sequential number unique to each part within the service assembly.

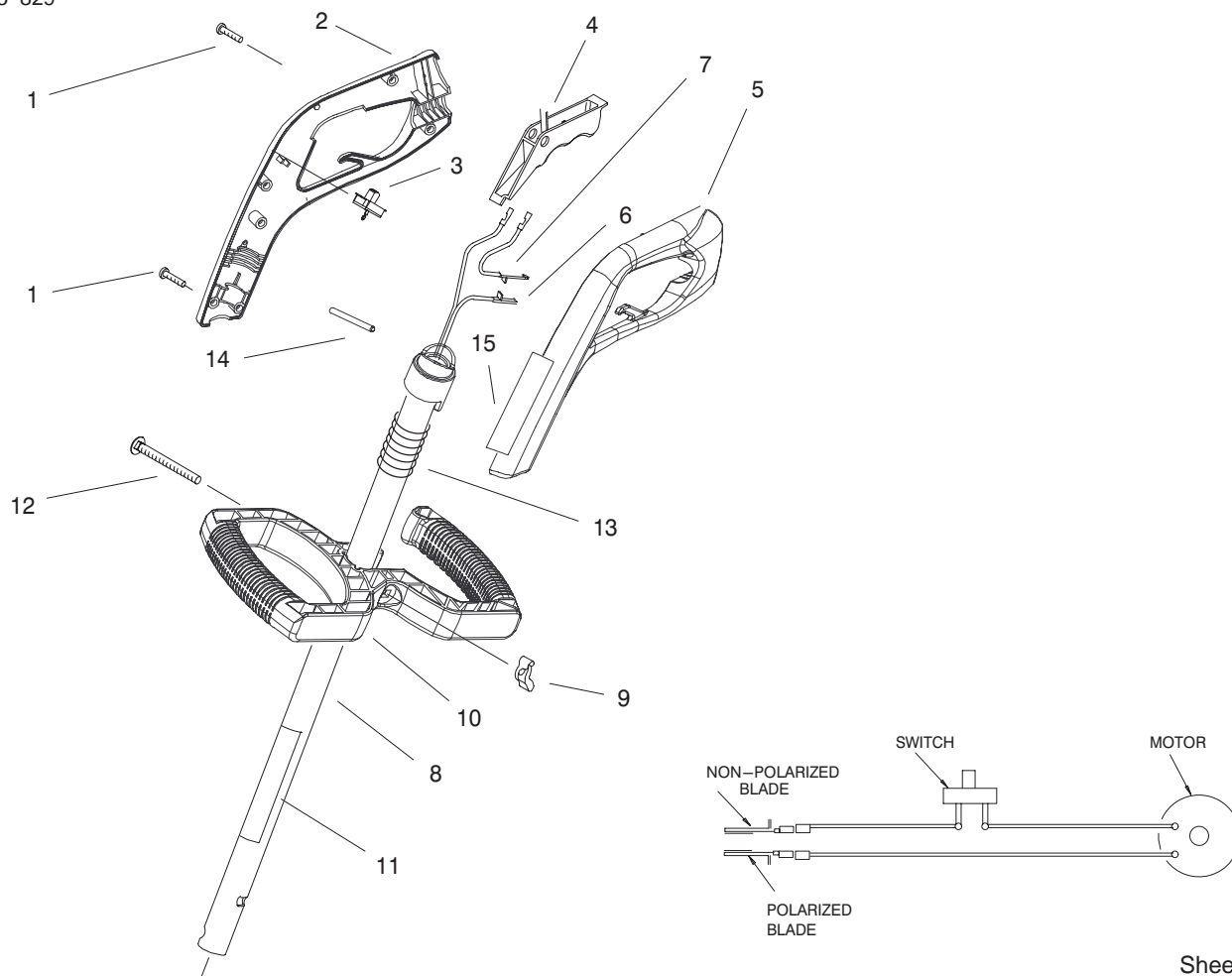
For example, a wheel assembly might be identified by reference number **6**, the tire by **6:1**, the valve by **6:2**, and the wheel by **6:3**. When you order the assembly identified by reference number **6**, you receive all parts identified by reference numbers **6:1**, **6:2**, and **6:3**. However, you may also order any part individually.

Reference numbers of this type appear in illustrations and in part lists.

Reference Numbers Indicating Quantity

In an illustration, if a reference number indicates more than one part, the reference number has the form **nX y**. The **n** represents the quantity of the part, the **X** is the multiplication symbol, and the **y** represents the reference number.

For example, in an illustration, the reference number **2X 37** means that two of the parts identified by reference number **37** are indicated.

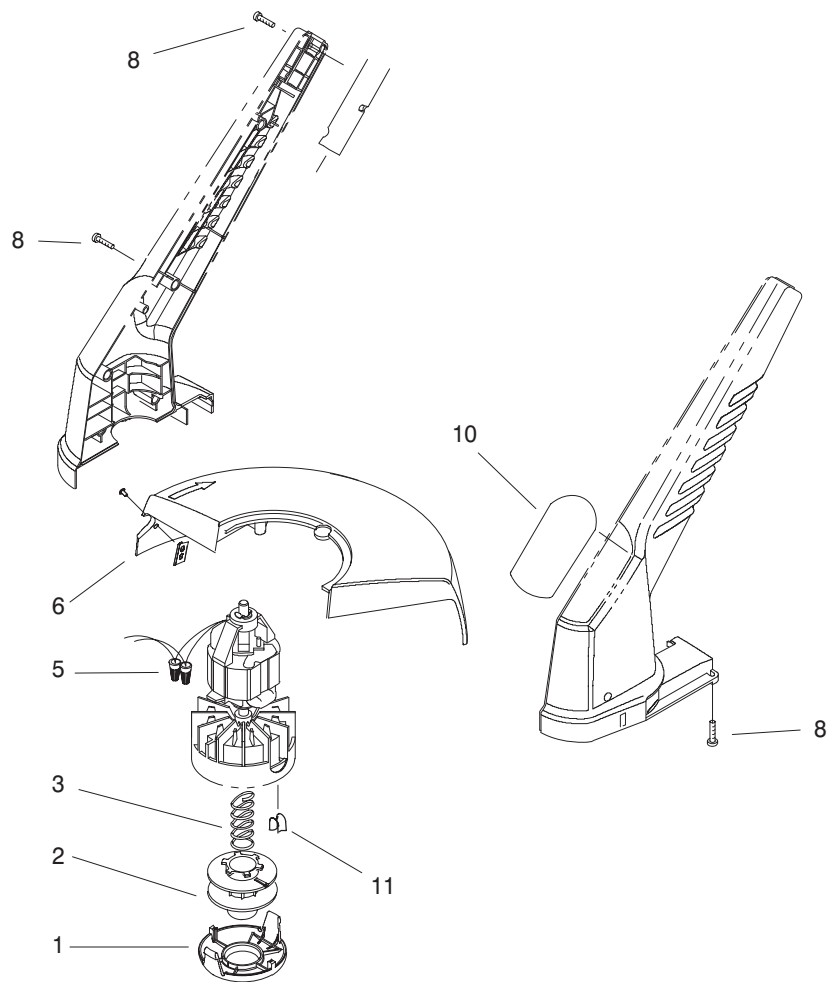


Sheet No.:2

Handle Assembly

Ref. No.	Part No.	Qty.	Description
1	94-4496	6	Screw-PPH
2	100-1229	1	Handle-RH
3	73-5600	1	Switch
4	73-8170	1	Trigger
5	100-9787	1	Handle-LH
6	100-1237	1	Harness-Wire
7	100-1240	1	Wire ASM-Jumper
8	100-1241	1	Tube ASM
9	32103-30	1	Nut-Wing
10	100-1231	1	Mid-Handle
11	98-7184	1	Decal-Warning
12	73-8740	1	Screw-CARR.
13	100-1242	1	Spring-Tube
14	100-1243	1	Pin-Handle
15	100-1235	1	Decal-Information

Ref. No.	Part No.	Qty.	Description



Sheet No.:3

Trimmer Assembly

Ref. No.	Part No.	Qty.	Description
1	73-8200	1	Cap
2	73-8190	1	Spool – Large
3	73-8220	1	Spring – Compression
5	73-6570	2	Connector–Wire Nut
6	73-9092	1	Shield ASM
8	94-4496	8	Screw–PPH
10	100-1249	1	Decal–14" Trim 'n Edge
11	73-8210	1	Eyelet
*	73-8490	1	.065 Spool ASM

Ref. No.	Part No.	Qty.	Description

* Not illustrated

