

# TORO®

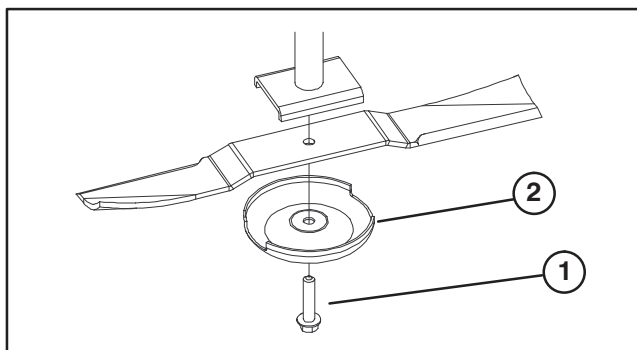
MODEL NO. 30420

## INSTALLATION INSTRUCTIONS

### Guardian Recycler® Conversion Kit Groundsmaster 4000—D

#### Front Deck

1. Park machine on a level surface, set parking brake, lower cutting units to the floor and shut engine off.
2. Remove deck covers.
3. Start engine, raise front cutting unit slightly off floor, and shut engine off.
4. Remove hair pin cotter and clevis pin securing height-of-cut chains to rear of deck.
5. Start engine, slowly raise front cutting unit and stop engine.
6. Grasp the front of the unit and lift it to an upright position.
7. Hold the unit upright, fit cable end over pin on cutting unit lift arm and secure with hair pin.
8. Grasp end of blade using a rag or thickly padded glove. Remove blade bolt, anti-scalp cup and blade from spindle shaft (Fig. 1). Repeat procedure on remaining blades.



**Figure 1**

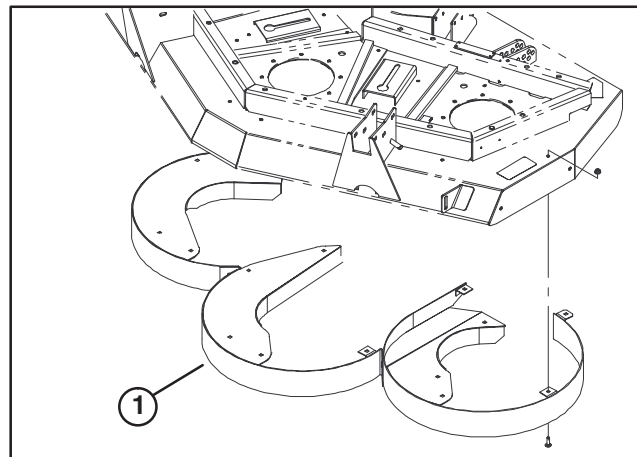
1. Blade bolt
2. Anti-Scalp Cup

9. Remove carriage bolts and flange head locknuts securing cutting chambers to underside of deck (Fig. 2). Remove chambers.

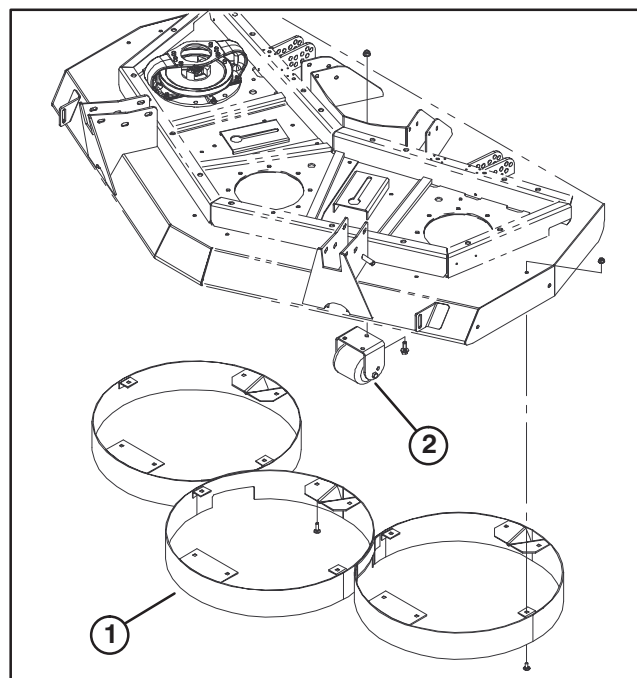
10. Install new deck chambers and secure with 5/16—18 x 5/8" or 1" long carriage bolts and locknuts (Fig. 3). Use longer carriage bolts when mounting thru deck reinforcement plates.

11. Using (3) center holes in rear, center of deck, install a new roller assembly and secure with (3) capscrews and locknuts (Fig. 3).

12. Install new blade—sail facing (up) toward cutting unit—with anti-scalp cup and blade bolt. Tighten blade bolt to 85—110 ft—lb. Repeat procedure on remaining blades.



**Figure 2**  
1. Cutting chambers



**Figure 3**  
1. Cutting chambers  
2. Deck roller

13. With the help of an assistant, hold the unit upright, remove the hair pin securing the cable end and remove from the pin.

14. Pivot (tilt) the cutting unit downward.

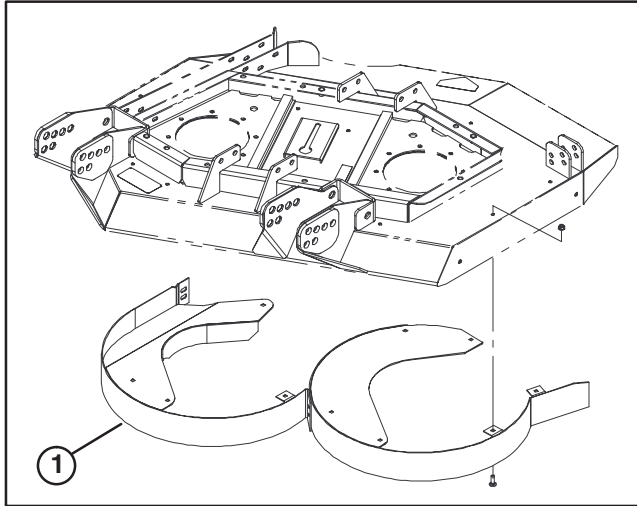
15. Sit on seat, start engine and lower the cutting unit until it is slightly off the floor.

16. Secure height-of-cut chains to rear of deck.

17. Install deck covers.

## Side Decks

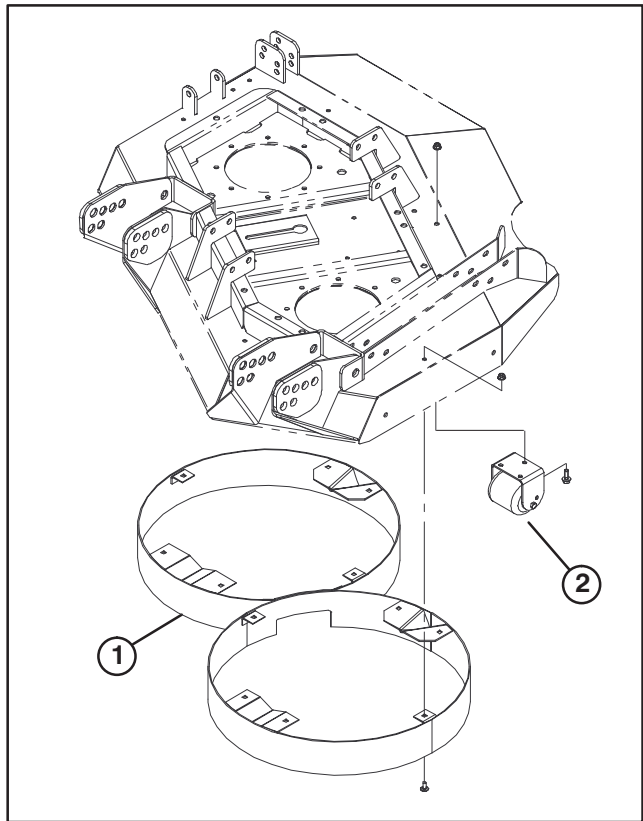
1. Lower side cutting units to the floor and shut engine off.
2. Remove deck covers.
3. Start engine, slowly raise side cutting unit and stop engine.
4. Grasp end of blade using a rag or thickly padded glove. Remove blade bolt, anti-scalp cup and blade from spindle shaft (Fig. 1). Repeat procedure on remaining blades.
5. Remove carriage bolts and flange head locknuts securing cutting chambers to underside of deck (Fig. 4). Remove chambers.



**Figure 4**

1. Cutting chambers

6. Install new deck chambers and secure with 5/16–18 x 5/8" long carriage bolts and locknuts (Fig. 5).
7. Using (3) holes in outer edge of deck, install a new roller assembly and secure with (3) capscrews and locknuts (Fig. 3).



**Figure 5**

1. Cutting chambers  
2. Deck roller

8. Install new blade—sail facing (up) toward cutting unit—with anti-scalp cup and blade bolt. Tighten blade bolt to 85–110 ft-lb. Repeat procedure on remaining blades.

**Note:** If deck is ever converted back to its original configuration, make sure new rollers and roller brackets are removed from all decks.