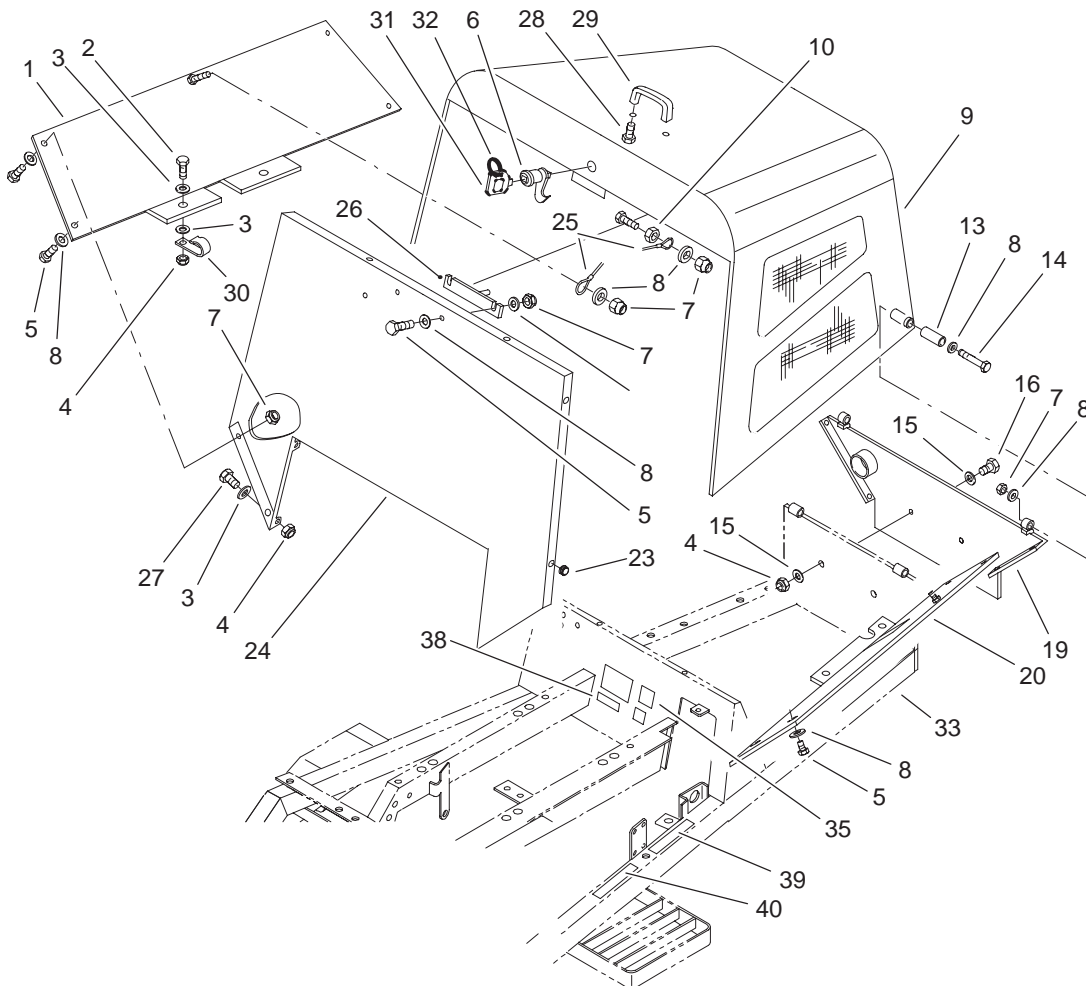




MODEL NO. 02003-90001 & UP

Parts
Catalog

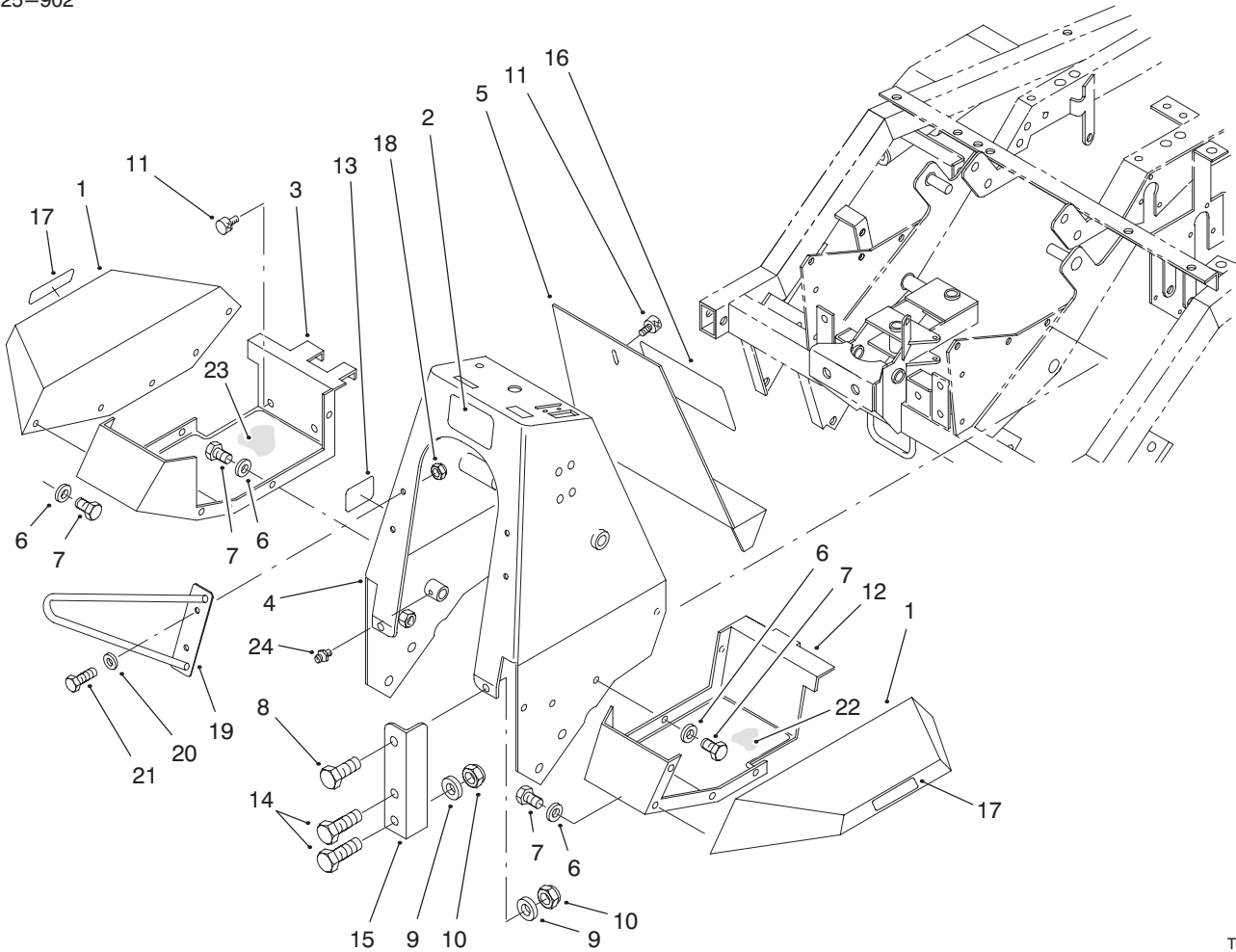
Grounds Pro 2000D



T-3267

Hood and Frame Assembly

Ref. No.	Part No.	Description	No. Used	Ref. No.	Part No.	Description	No. Used
1	100-0021	Cover-RH	1	24	100-0023	Extension-Firewall	1
2	33114-080	Screw-HH	2	25	98-5667	Cable	2
3	33094-00	Washer-Flat	9	26	98-5674	Plate-Hood Lock	1
4	33024-00	Nut-Lock NI	7	27	33114-016	Screw-HH	5
5	33113-020	Screw-HH	10	28	46-8091	Screw-Tapping	2
6	98-5398	Lock-Hood	1	29	65-5100	Handle-Hood	1
7	33023-00	Nut-Lock NI	10	30	2412-100	Clamp	2
8	33093-00	Washer-Flat	20	31	99-8970	Latch-Key, Hood	1
9	100-0094	Hood	1	32	98-9321	Ring-Key	1
10	33013-00	Nut-Hex	2	33	100-0090	Frame Assembly (Incl. Ref. # 39 and 40)	1
13	100-0022	Spacer	2	34	100-6574	Decal-Danger	1
14	33113-080	Screw-HH	2	35	63-9920	Decal-EEC 105	1
15	88-7200	Washer	4	38	98-5350	Decal-Country of Origin	1
16	33114-020	Screw-HH	2	39	93-7814	Decal-Danger	1
19	100-0028	Rear Plate	1	40	93-7272	Decal-Caution	1
20	100-0020	Cover-LH	1				
23	237-141	Grommet	6				



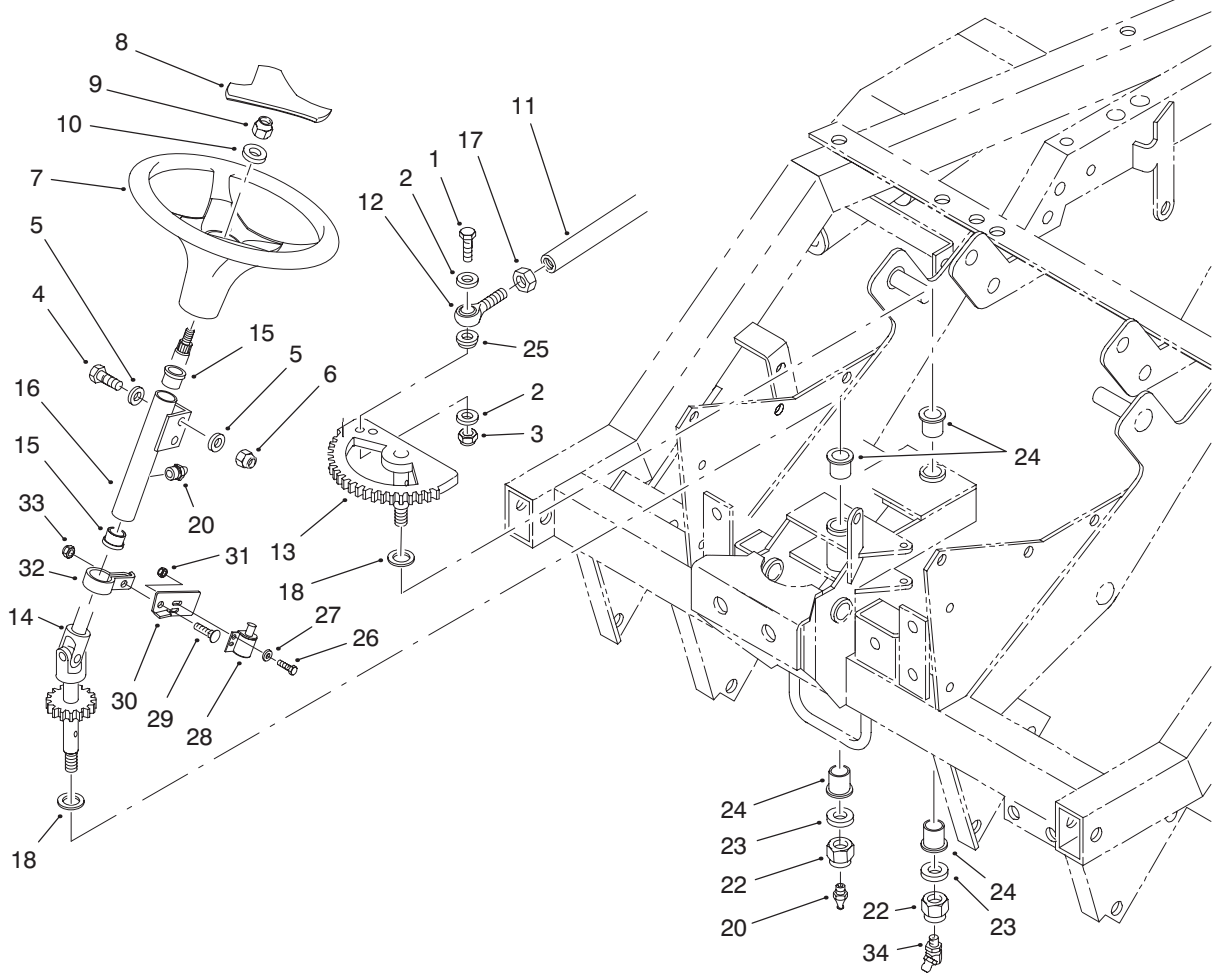
T-2978

Control Panel, Footrest and Fender Assembly

Ref. No.	Part No.	Description	No. Used
1	98-5642	Fender	2
2	67-1300	Decal-Logo	1
3	98-5639	Plate-Foot, RH	1
4	100-8156	Steering Tower Assembly	1
5	99-3328	Panel-Service (Incl. Ref. #16)	1
6	33093-00	Washer	16
7	33113-016	Screw	16
8	33115-020	Screw	2
9	33095-00	Washer	6
10	33025-00	Nut	6
11	75-6840	Knob-Knurled	1
12	98-5638	Plate-Foot, LH	1
13	93-7267	Decal-Parking Brake	1

Ref. No.	Part No.	Description	No. Used
14	33115-030	Screw	4
15	98-5483	Bracket-Angle, LH	1
*	98-5482	Bracket-Angle, RH	1
16	98-5322	Decal-Safety	1
17	93-6687	Decal-No Step	2
18	33024-00	Nut-Lock	4
19	98-5835	Bracket-CE, RH	1
*	98-5669	Bracket-CE, LH	1
20	33094-00	Washer-Flat	4
21	33114-020	Screw-HH	4
22	98-5640	Rubber-Footplate	1
23	98-5641	Rubber-Footplate	1
24	302-5	Fitting-Grease	1

*Not Illustrated

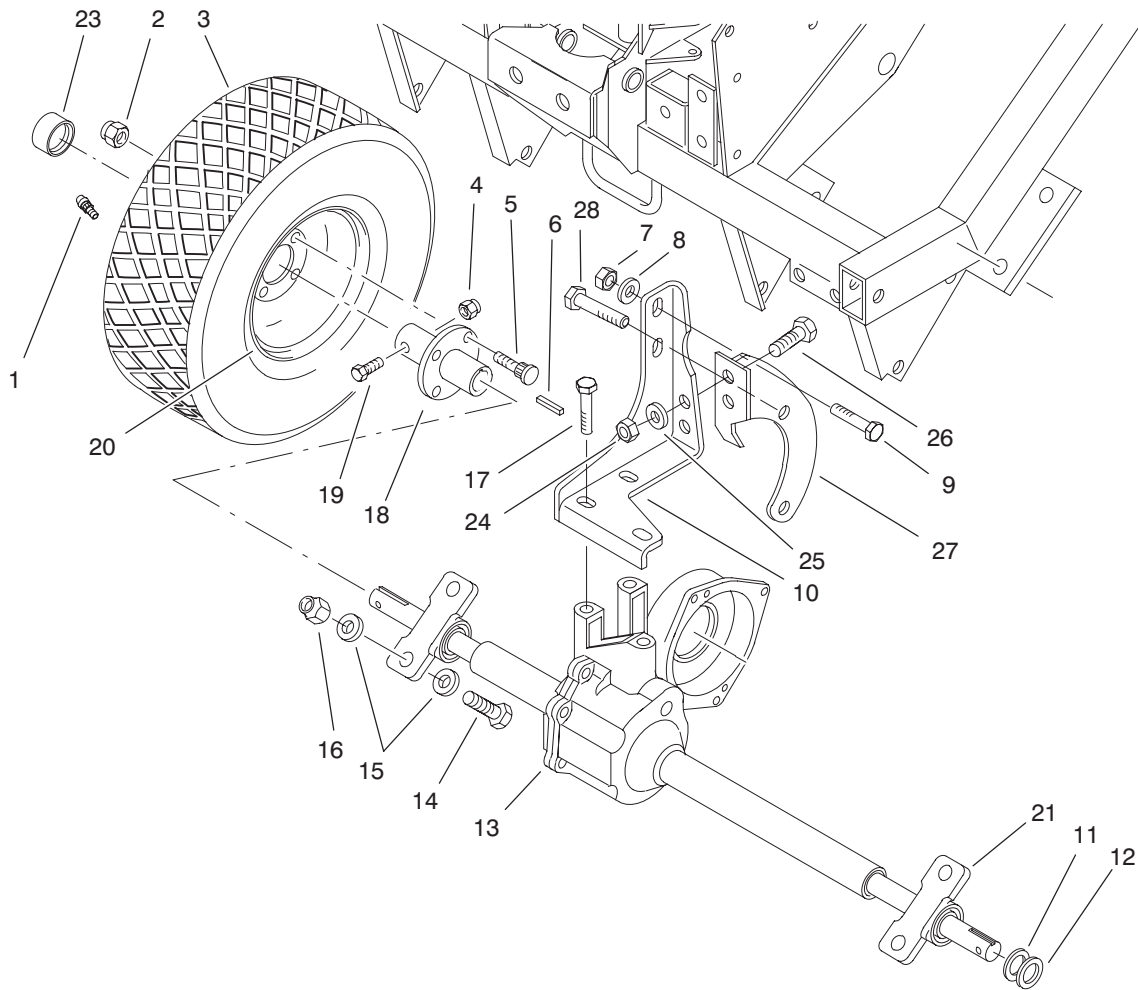


T-2973

Steering Assembly

Ref. No.	Part No.	Description	No. Used
1	33115-045	Screw	1
2	33095-00	Washer-Flat	2
3	33025-00	Nut-Lock	1
4	33114-060	Screw-HH	1
5	33094-00	Washer-Flat	2
6	33024-00	Nut-Lock	1
7	94-3500	Steering Wheel (Incl. Ref. #8)	1
8	88-3870	Cover-Steering Wheel	1
9	3296-25	Nut-Lock	1
10	3256-26	Washer-Flat	1
11	98-5463	Rod-Steering	1
12	98-5442	Rod End-RH	1
13	93-6768-03	Gear-Sector	1
14	98-5325	Steering Shaft & Gear	1
15	256-27	Bushing-Straight	2
16	93-6769-03	Steering Column	1

Ref. No.	Part No.	Description	No. Used
17	33015-00	Nut	1
18	3-6498	Washer-Thrust	2
20	302-5	Fitting-Grease	2
22	3296-33	Nut-Lock	2
23	3256-27	Washer-Flat	2
24	92-3162	Bushing-Flange	4
25	98-5462	Washer	1
26	52-6450	Screw	2
27	52-6430	Washer-Flat	2
28	55-7120	Switch-Lift	1
29	33124-035	Bolt-Carriage	1
30	98-5680	Plate-Switch	1
31	87-5140	Nut-Lock	2
32	98-5847	Clamp (Incl. Ref. #29 & 33)	1
33	33014-00	Nut-Lock	1
34	302-11	Fitting-Grease 45°	1



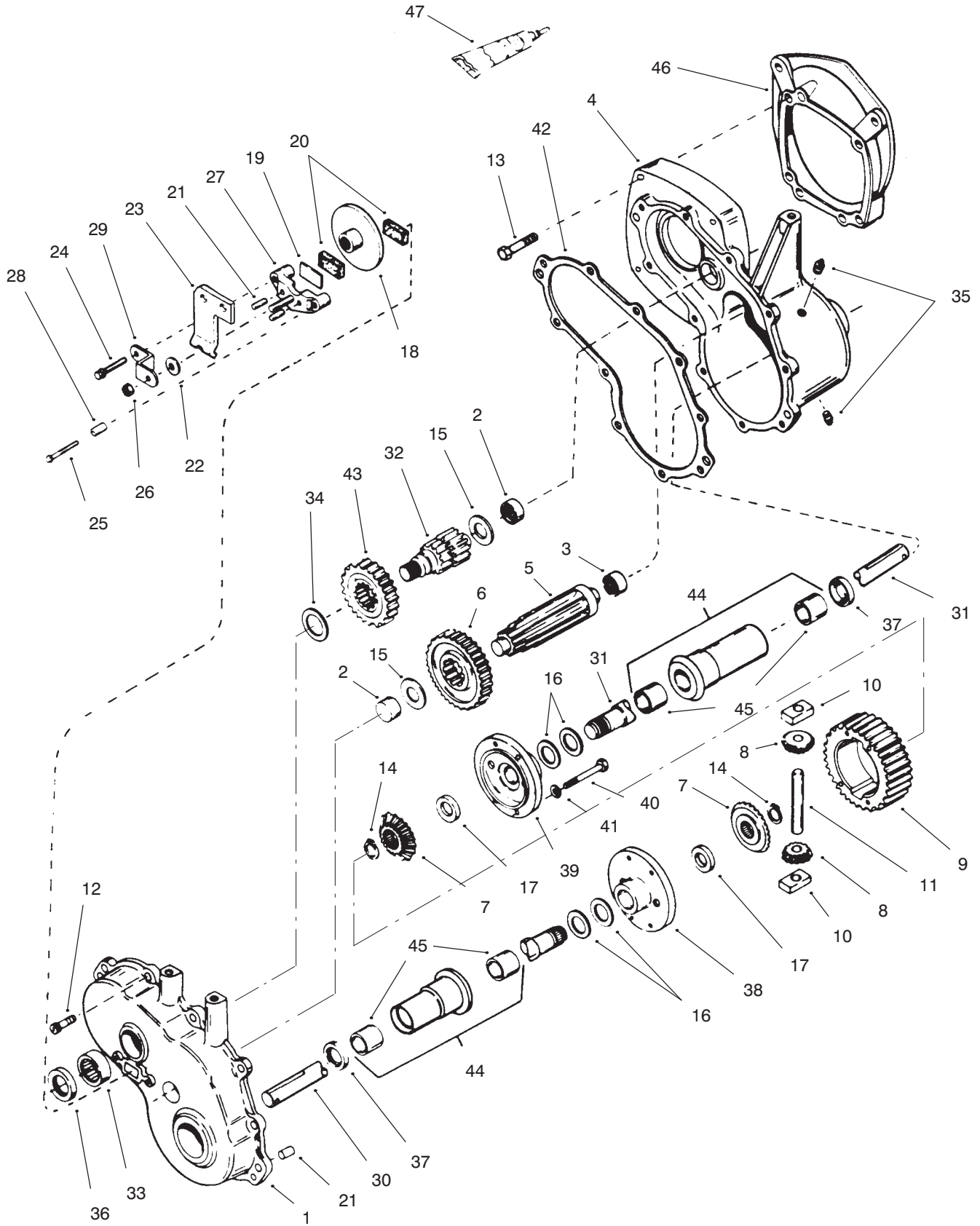
T-2991-1

Front Axle Assembly

Ref. No.	Part No.	Description	No. Used	Ref. No.	Part No.	Description	No. Used
1	232-27	Stem-Valve	2	17	3234-1	Screw	3
2	242-50	Nut	8	18	98-5337	Hub-Wheel	2
3	94-9387	Tire-23 x 9.5-12	2	19	322-10	Screw	2
4	3296-29	Nut-Lock	2	20	98-5315	Rim-Wheel	2
5	242-71	Bolt-Wheel	8	21	98-5336	Bearing Assembly (Incl. Ref. #22)	2
6	5-0786	Key-Square	2	*22	3246-16	Screw-Set	2
7	33025-00	Nut-Lock	2	23	111951	Cap-Hub	2
8	33095-00	Washer-Flat	2	24	33024-00	Nut-Lock	2
9	33115-025	Screw-HH	2	25	33094-00	Washer-Flat	2
10	98-5531	Mount-Axle	1	26	33114-025	Screw-HH	2
11	98-5525	Washer-Shim	A/R	27	100-0097	Bracket-Torque	1
12	98-5526	Washer-Shim	A/R	28	323-11	Screw-HH	2
13	98-5327	Axle Assembly	1	*	98-5316	Tire & Wheel Assembly (Incl. Ref. #1, 3 & 20)	2
14	33116-045	Screw-HH	4	*	8-2531	Chains-Tire (Optional)	2
15	33096-00	Washer	8				
16	33026-00	Nut-Lock	4				

*Not Illustrated

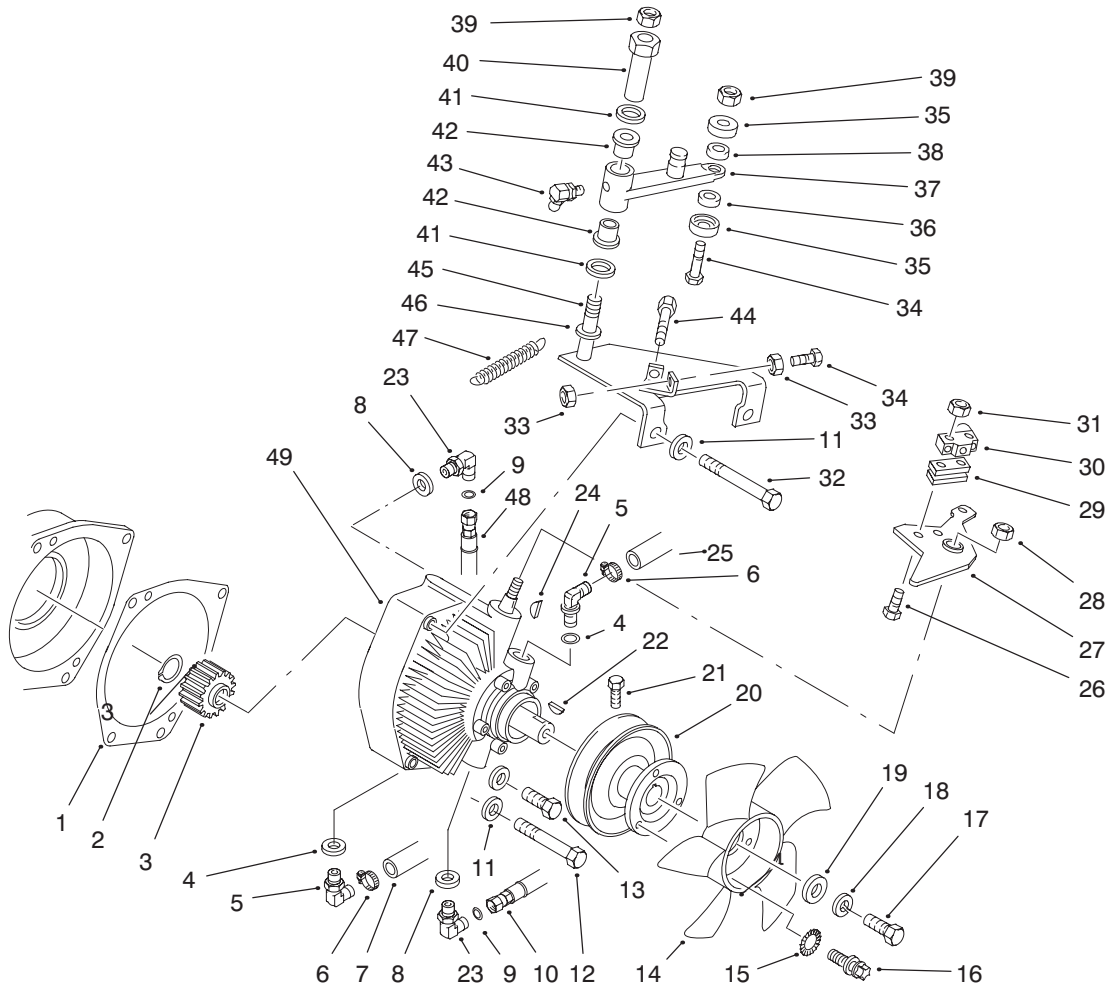
Axle Assembly No. 98-5327



Axle Assembly No. 98-5327

Ref. No.	Part No.	Description	No. Used
1	98-5352	Cover Assembly	1
2	98-5353	Bearing-Needle	2
3	98-5354	Bearing-Needle	1
4	98-5355	Case Assembly	1
5	98-5356	Shaft-Output	1
6	98-5357	Gear-Output	1
7	98-5358	Gear-Bevel	2
8	98-5359	Pinion-Bevel	2
9	98-5360	Gear-Ring	1
10	95-7213	Block-Drive	2
11	95-7212	Pin-Drive	1
12	98-5361	Screw	10
13	98-5362	Screw	3
14	98-5363	Ring-Retaining, External	2
15	95-7244	Washer	2
16	252-80	Washer-Thrust	4
17	95-7257	Washer	2
18	98-5364	Disc-Brake	1
19	98-5365	Plate-Pad, Brake	1
20	98-5366	Pad-Brake	1
21	95-7236	Pin-Dowel	6
22	98-5367	Washer-Flat	1
23	98-5368	Arm-Brake	1
24	98-5369	Screw	1

Ref. No.	Part No.	Description	No. Used
25	98-5370	Screw	1
26	98-5371	Nut-Lock	1
27	98-5372	Holder-Pad, Brake	1
28	98-5373	Spacer	1
29	98-5374	Bracket-Lever, Brake	1
30	98-5375	Axle	1
31	98-5376	Axle	1
32	98-5377	Shaft-Shifter & Brake	1
33	98-5378	Bearing-Needle	1
34	98-5379	Washer-Flat	1
35	281-2	Plug-Pipe	3
36	27-6420	Seal-Oil	1
37	98-5380	Seal-Oil	2
38	98-5381	Carrier-Differential	1
39	98-5382	Carrier-Differential	1
40	98-5383	Screw	8
41	3253-3	Washer-Lock	8
42	98-5384	Gasket-Case to Cover	1
43	98-5385	Gear-Spur	1
44	98-5386	Axle Housing Assembly	2
45	98-5387	Bushing	4
46	98-5388	Plate-Adapter	1
47	98-5389	Gasket-Loctite	1

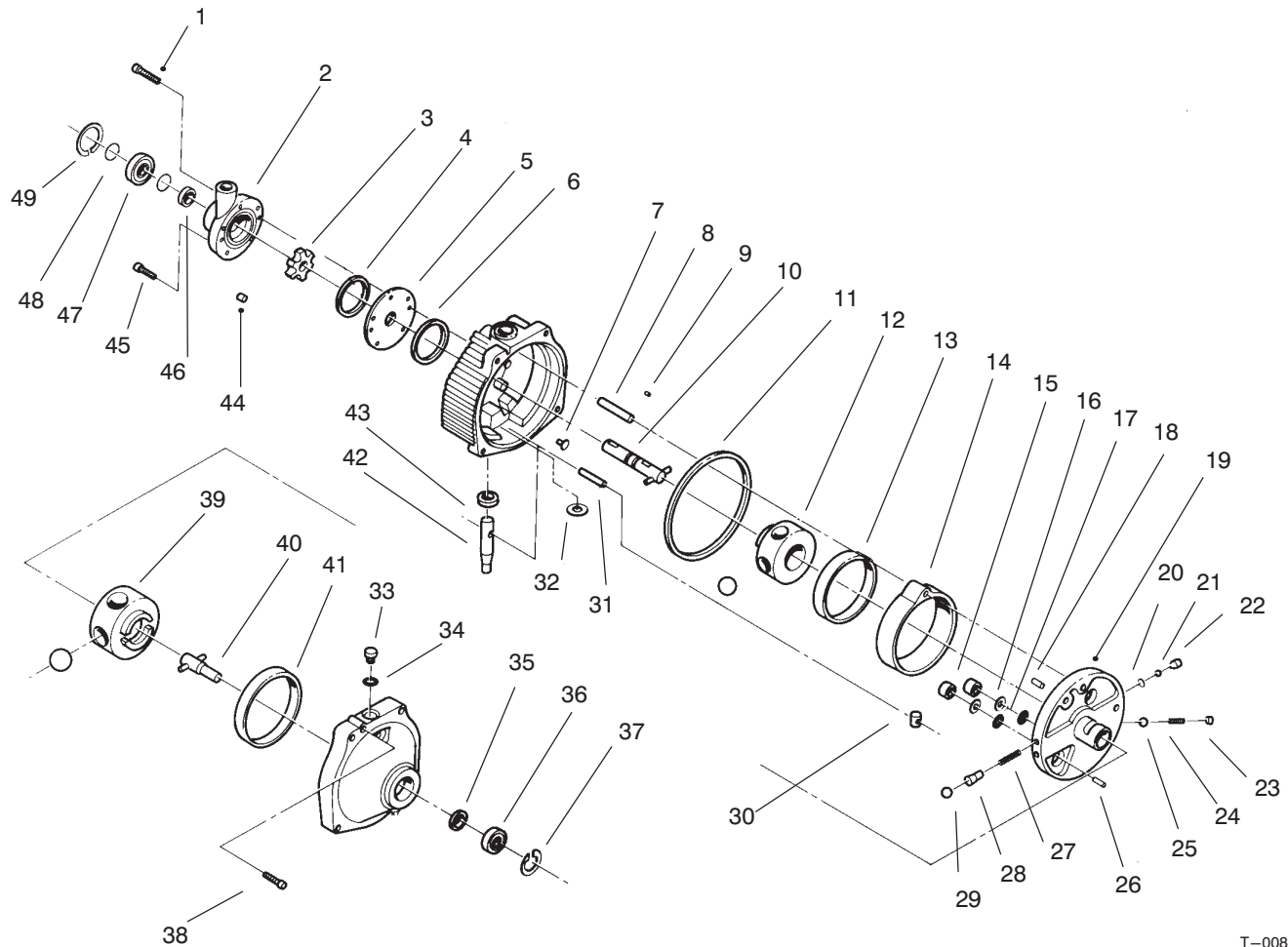


T-2993

Transmission Assembly

Ref. No.	Part No.	Description	No. Used
1	108319	Gasket	1
2	32120-64	Ring-Snap	1
3	54-0320	Gear	1
4	237-80	O-Ring	2
5	94-7691	Adapter (Incl. Ref. #4)	2
6	2412-129	Clamp-Hose	2
7	98-5341	Hose	1
8	237-42	O-Ring	2
9	237-22	O-Ring	2
10	63-7550	Hose Assembly	1
11	3253-5	Washer-Lock	4
12	323-16	Screw-HH	1
13	323-13	Screw-HH	1
14	54-0240	Fan	1
15	3255-5	Washer-Lock	3
16	32144-19	Screw-Round Head	3
17	321-2	Screw-HH	1
18	3253-3	Washer-Lock	1
19	3256-55	Washer	1
20	54-0930	Pulley-Transmission	1
21	3241-2	Screw-Set	2
22	3257-5	Key-Woodruff	1
23	340-77	Fitting-Hydraulic (Incl. Ref. #8 & 9)	2
24	3257-24	Key-Woodruff	1

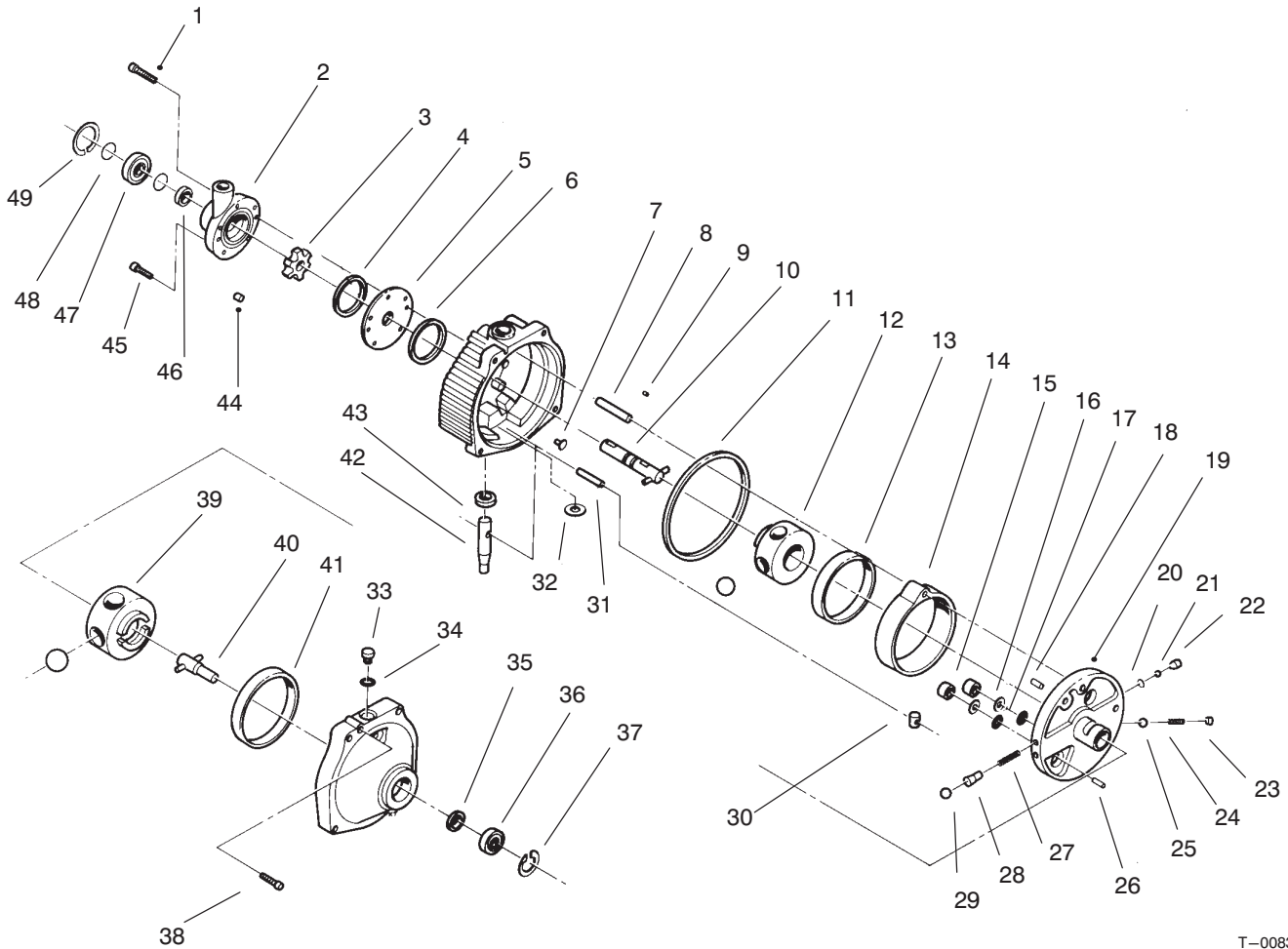
Ref. No.	Part No.	Description	No. Used
25	98-5342	Hose	1
26	3250-46	Screw	2
27	98-5529	Plate-Traction	1
28	3296-25	Nut	1
29	75-4130	Spacer	2
30	29-6163	Switch	1
31	3296-9	Nut	2
32	323-14	Screw-HH	2
33	3217-6	Nut	4
34	322-7	Screw-HH	2
35	251-307	Bearing	2
36	92-6290	Spacer	1
37	92-6289	Swing Arm Assembly (Incl. Ref. #42 & 43)	1
38	75-5470	Spacer-Bearing	1
39	3296-29	Nut-Lock	2
40	76-8640	Stud-Traction	1
41	3-6498	Washer	1
42	256-113	Bushing-Flange	2
43	302-60	Fitting-Grease	1
44	322-6	Screw-HH	1
45	92-6270-03	Plate-Traction	1
46	3256-68	Washer	1
47	76-9430-03	Spring-Extension	1
48	76-6880	Hose Assembly	1
49	98-0777	Transmission-Hydrostatic	1



T-0083-1

Hydrostatic Transmission Assembly No. 98-0777

Ref. No.	Part No.	Description	No. Used	Ref. No.	Part No.	Description	No. Used
1	56-2800	Screw - Hex. Socket Hd.	1	23	56-3050	Plug - Relief Valve	1
2	56-2830	Charge Pump Assembly (Incl. Ref. #1)	1	24	56-3040	Spring - Relief Valve	1
3	56-3120	Carrier	1	25	56-3030	Ball	1
4	56-2850	Ring - Seal	1	26	56-3060	Pin - Dowel	1
5	56-2860	Plate - Pump	1	27	56-3180	Spring - Valve	2
6	56-2870	Ring - Seal	1	28	56-3200	Body - Valve	2
7	56-2880	Button	2	29	56-3210	Ball	2
8	56-2890	Pin - Dowel	1	30	56-3170	Insert - Cam Ring	1
9	56-2900	Pin - Drive	1	31		Dowel	1
10	56-2910	Input Shaft Assembly	1	32		Washer - Control Shaft	1
11	56-2920	Ring - Seal	1	33	56-3250	Plug Assembly (Incl. Ref. #34)	1
12	56-2930	Pump Rotor & Ball Assembly	1	34	56-3260	"O"Ring	1
13		Race - Pump	1	35	56-3270	Seal - Oil	1
14	56-2940	Cam Ring Assembly (Incl. Ref. #13)	1	36	56-3280	Bearing - Output	1
15	56-2950	Piston	2	37	56-3290	Ring - Retaining	1
16	56-2960	Ring - Backup	2	38	56-3300	Screw - Hex. Socket Hd.	2
17	56-2970	"O"Ring	2	39	56-3220	Motor Rotor & Ball Assembly	1
18	56-2980	Pin - Coil	1	40	56-3230	Output Shaft Assembly	1
19	56-2990	Pintle Assembly (Incl. Ref. #15-18, 20, 22-26 & 27-29)	1	41	56-3240	Race - Motor	1
20	56-3000	Ring - Retaining	2	42	56-3140	Control Shaft Kit (Incl. Ref. #31 & 32)	1
21	56-3010	Ball	2	43	56-3130	Seal - Oil	1
22	56-3020	Body - Check Valve	2	44	56-3110	Pin - Roll	6
				45	56-3100	Screw - Hex. Socket Hd.	4
				46	56-2820	Seal - Oil	1

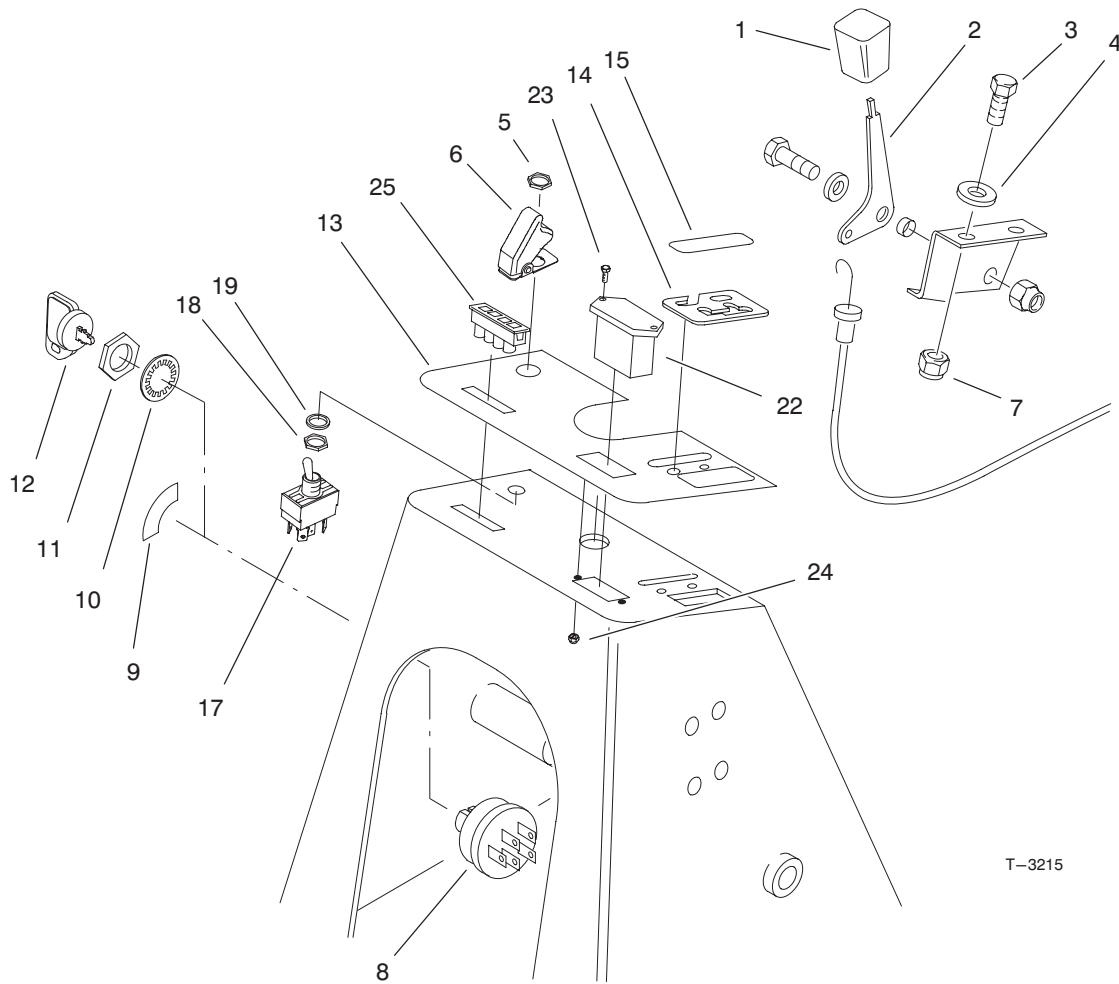


T-0083-1

Hydrostatic Transmission Assembly No. 98-0777 (Continued)

Ref. No.	Part No.	Description	No. Used
47	56-2810	Bearing - Input	1
48	56-3090	Ring - Retaining	2
49	56-3080	Ring - Retaining	1

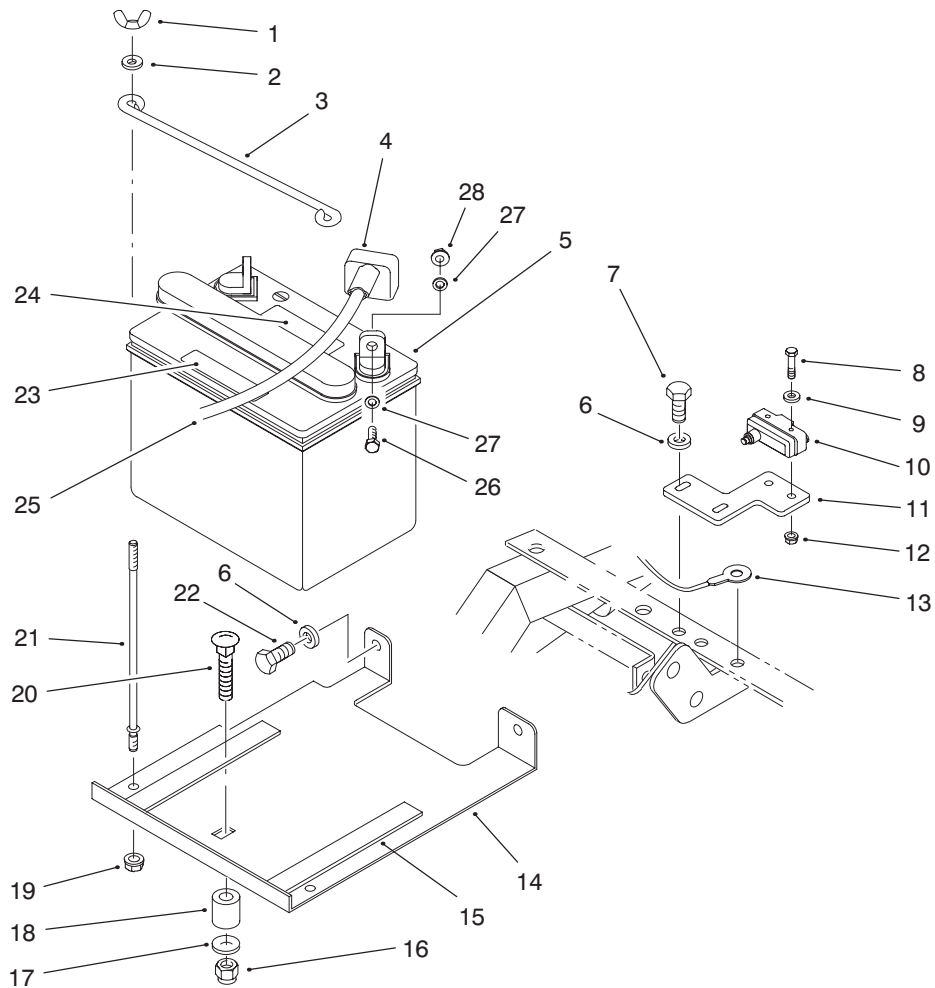
Ref. No.	Part No.	Description	No. Used
*	56-3310	Kit - Overhaul Seal (Incl. Ref. #4, 6, 11, 16, 17, 34, 35, 43 & 46)	1



T-3215

Control Assembly

Ref. No.	Part No.	Description	No. Used	Ref. No.	Part No.	Description	No. Used
1	66-0120	Knob-Lever	1	12	63-8360	Key-Ignition	1
2	98-5305	Control-Throttle (Incl. Ref. # 1)	1	13	99-3335	Decal-Panel, Control	1
3	33113-020	Screw-HH	2	14	98-5633	Plate	1
4	33093-00	Washer-Flat	2	15	98-5346	Decal-Lift	1
5	113179	Nut	1	17	116716	Switch-Clutch (Incl. Ref. #5, 18 & 19)	1
6	113050	Cover-Switch	1	18	105805	Nut	1
7	33023-00	Nut-Lock	2	19	102950	Washer	1
8	88-9830	Ignition Switch Assembly (Incl. Ref. #10 & 11)	1	21	98-5845	Nut	2
9	98-5320	Decal-Ignition	1	22	75-6820	Hourmeter	1
10	3254-5	Washer-Lock	1	23	32144-18	Screw-HWH	2
11	218-461	Nut-Hex.	1	24	3296-9	Nut-Lock	2
				25	100-0093	Cluster-Light, Warning	1

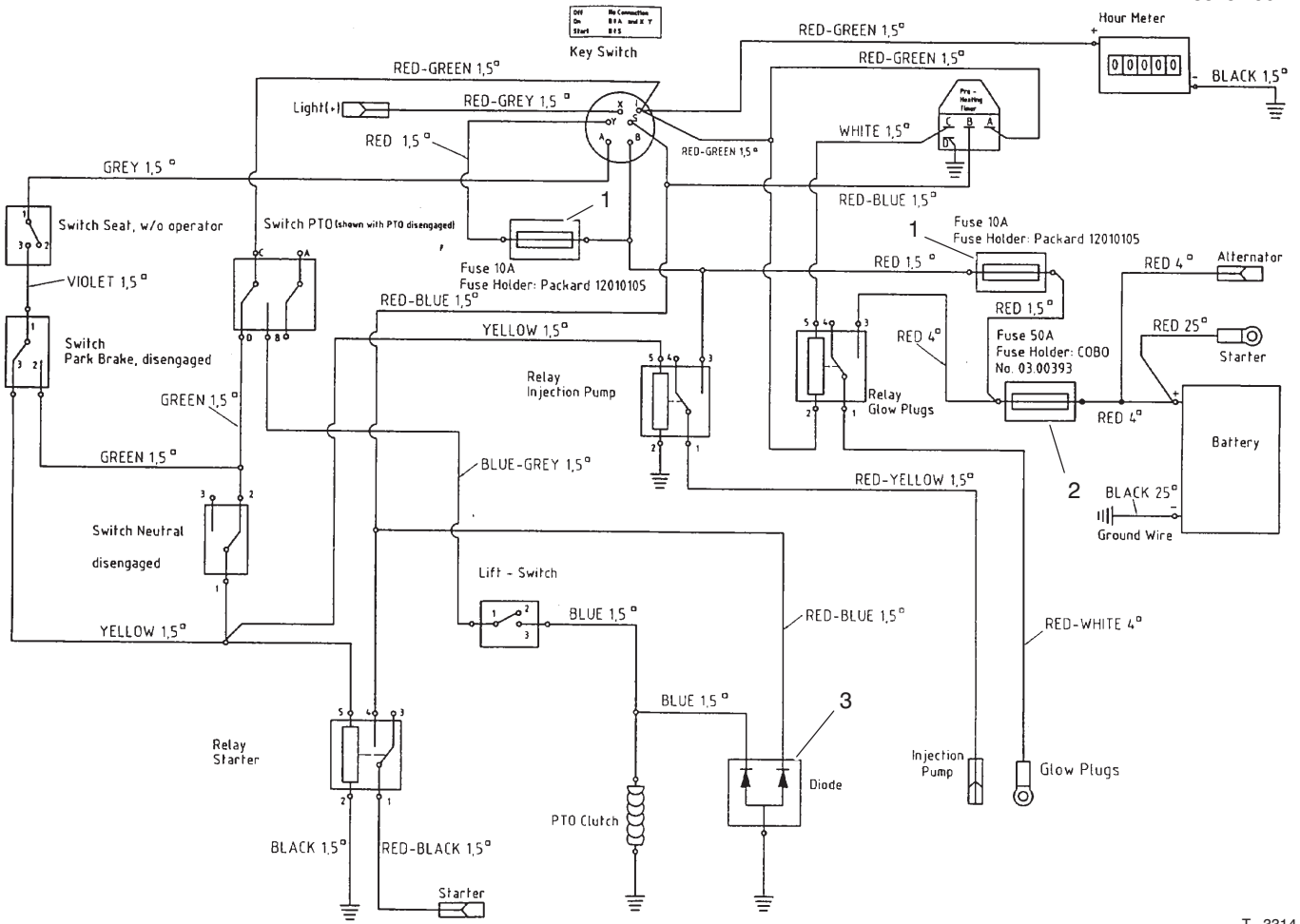


T-3017-2

Battery Assembly

Ref. No.	Part No.	Description	No. Used
1	32103-12	Nut-Wing	2
2	3256-1	Washer-Flat	2
3	72-4790	Clamp-Battery	1
4	28-8080	Boot-Terminal	1
5		Battery	1
6	43-5930	Washer	4
7	33113-016	Screw	2
8	3250-35	Screw	2
9	3256-53	Washer-Flat	2
10	29-6163	Switch-Brake	1
11	98-5488	Plate-Switch	1
12	3296-9	Nut-Lock	2
13	100-0052	Wire-Ground	1
14	100-0050	Battery Plate Assembly (Incl. Ref. #15)	1

Ref. No.	Part No.	Description	No. Used
15	100-0051	Rubber	2
16	33025-00	Nut	1
17	33095-00	Washer	1
18	98-5485	Spacer	1
19	32149-2	Nut-Hex	2
20	33125-090	Screw	1
21	10-8120	Bolt-Battery	2
22	33113-008	Screw	2
23	93-6668	Decal-Battery	1
24	93-7276	Decal-Battery	1
25	100-0010	Cable-Battery, Positive	1
26	33113-020	Screw-HH	2
27	33093-00	Washer-Flat	4
28	33023-00	Nut-Lock	2



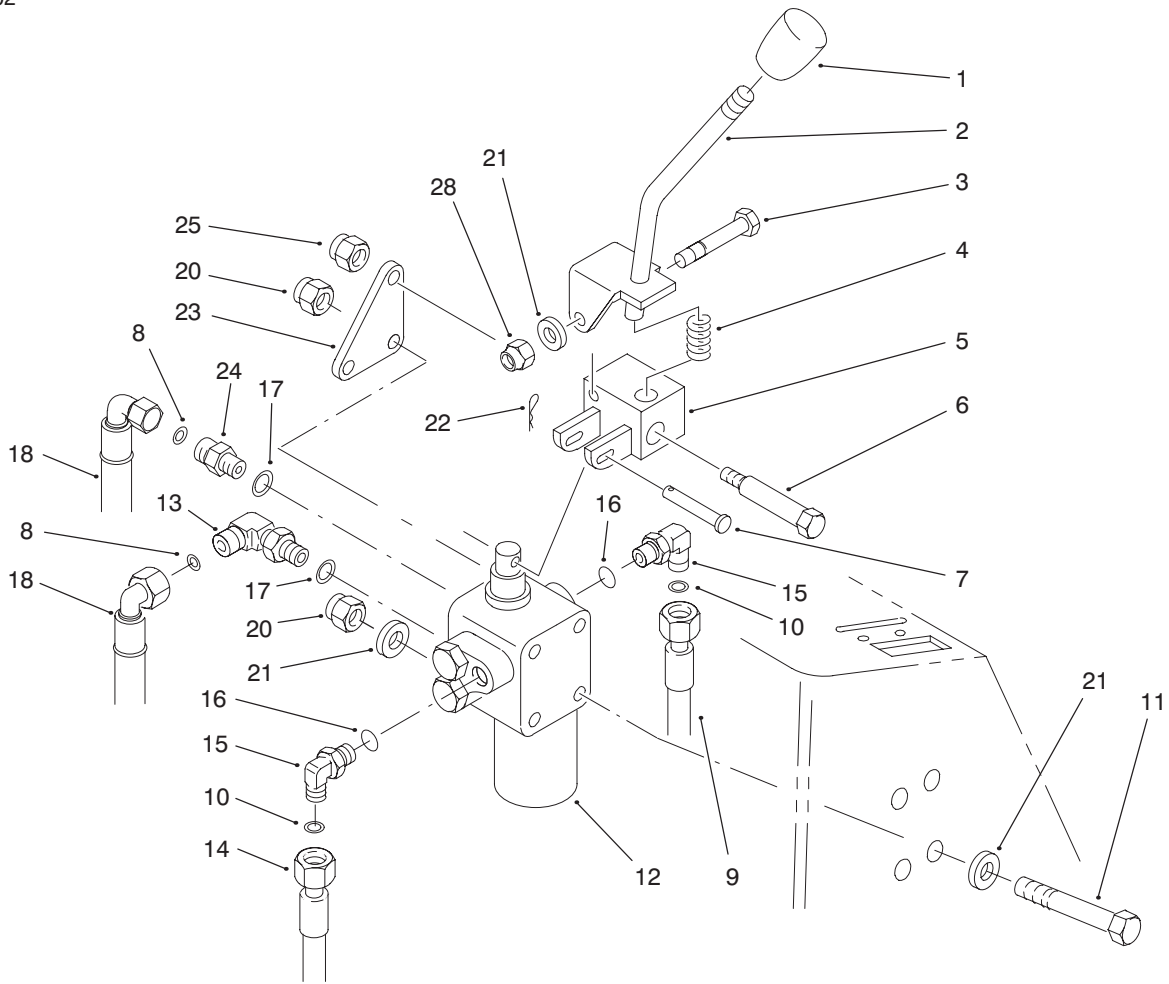
T-3314

Electrical Schematic

Ref. No.	Part No.	Description	No. Used
1	218-578	Fuse-10 Amp	2
2	94-8002	Fuse-50 Amp	1

Ref. No.	Part No.	Description	No. Used
3	94-5849	Diode	1
*	99-3345	Harness-Wire, Main	1

* Not Illustrated

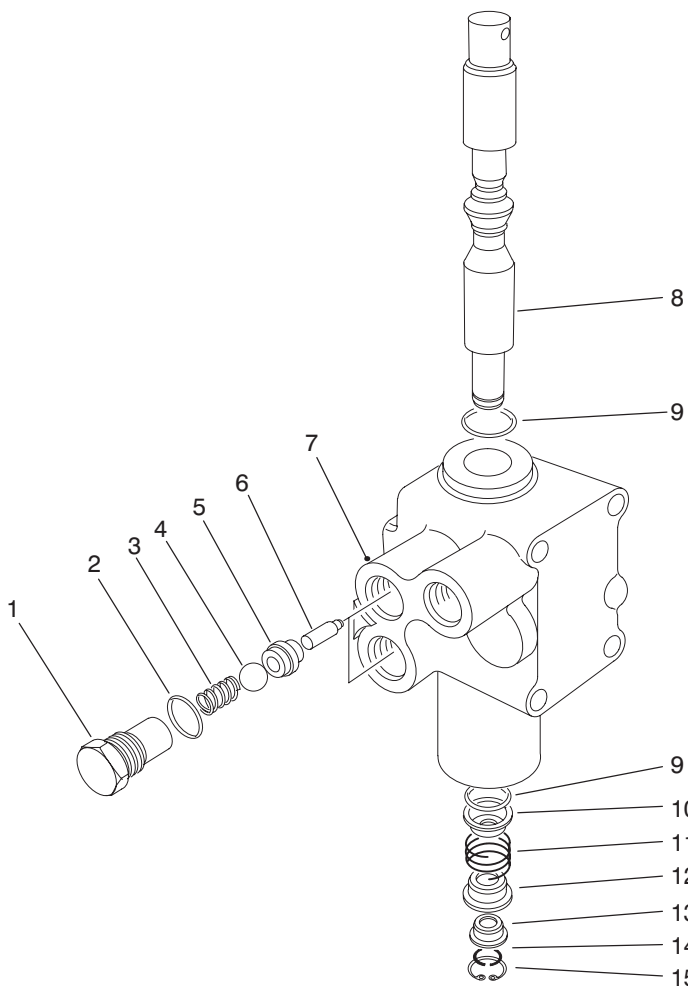


T-2990-1

Lift Valve Assembly

Ref. No.	Part No.	Description	No. Used
1	233-37	Knob	1
2	98-5661	Lever-Valve	1
3	33113-045	Screw-HH	1
4	98-5836	Spring	1
5	98-5664	Plate	1
6	56-6590	Screw	1
7	283-17	Pin-Clevis	1
8	237-21	O-Ring	2
9	63-7550	Hose Assembly	1
10	237-22	O-Ring	2
11	321-23	Screw-HH	4
12	43-1710-01	Valve Assembly	1
13	340-132	Fitting-Hydraulic (Incl. Ref. #8 & 17)	1

Ref. No.	Part No.	Description	No. Used
14	76-8210	Hose Assembly	1
15	340-77	Fitting-Hydraulic (Incl. Ref. #10 & 16)	2
16	237-42	O-Ring	2
17	237-78	O-Ring	2
18	98-5343	Hose Assembly	2
20	3296-56	Nut	4
21	33093-00	Washer-Flat	5
22	3272-6	Pin-Cotter	1
23	98-5668	Plate-Valve	1
24	340-92	Fitting-Hydraulic (Incl. Ref. #8 & 17)	1
25	3296-39	Nut	1
28	33023-00	Nut-Lock	1



T-0428-2

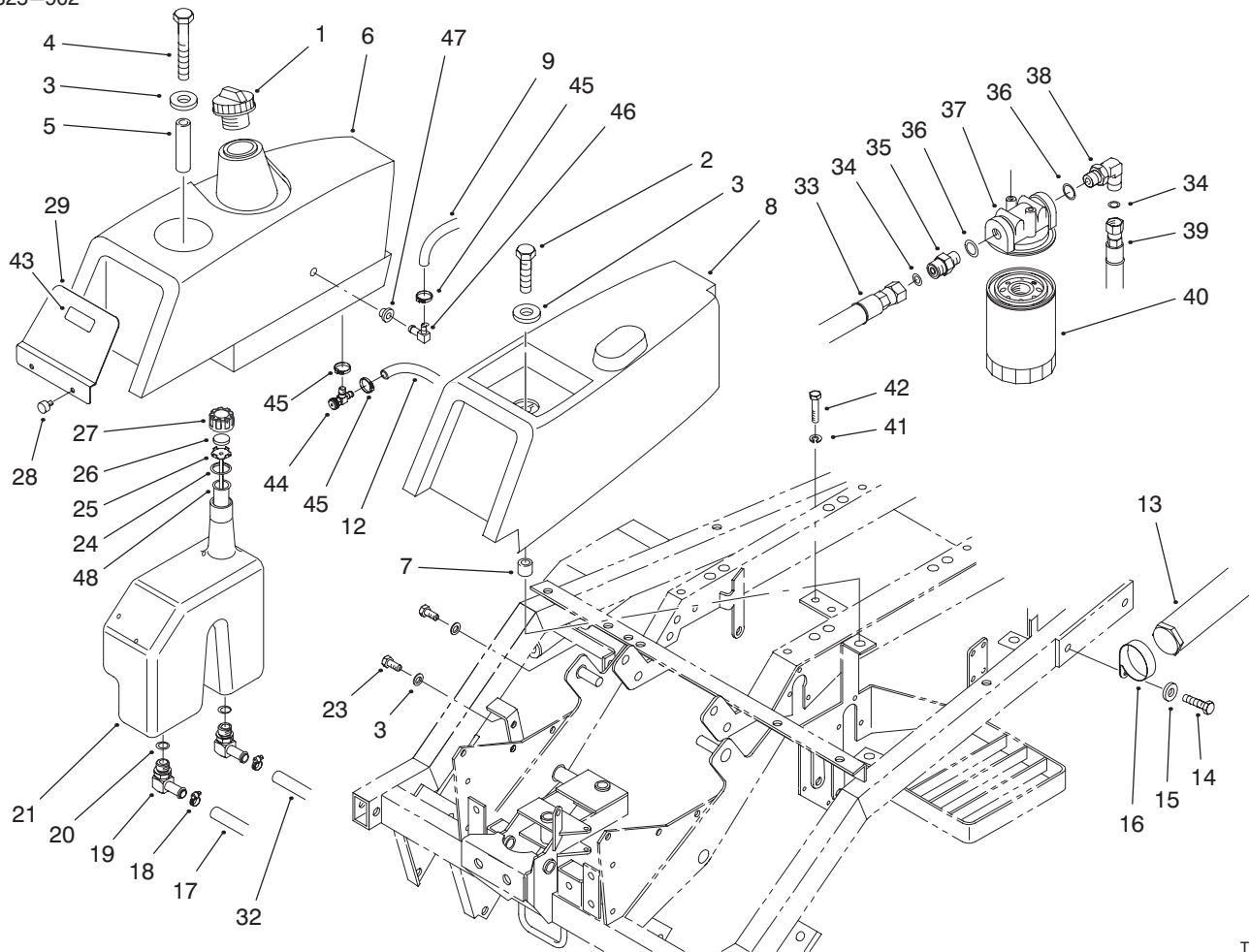
Valve Assembly No. 43-1710-01

Ref. No.	Part No.	Description	No. Used
1	22-8330	Plug	2
2	237-42	O-Ring	2
3	22-8340	Spring	2
4	22-8350	Ball	2
5	22-8370	Seat - Check Valve	2
6	22-8360	Pin - Cam	2
†7		Body	1
8	22-8420	Spool	1

Ref. No.	Part No.	Description	No. Used
9	22-8500	O-Ring	2
10	22-8380	Retainer - Spring	2
11	22-8410	Spring	1
12	22-8390	Spring Retainer	1
13	22-8400	Spacer Float	1
14	22-8480	Ring - Spool Retaining	1
15	22-8490	Ring - Retaining	1

†Not Serviceable Separately

3325-902



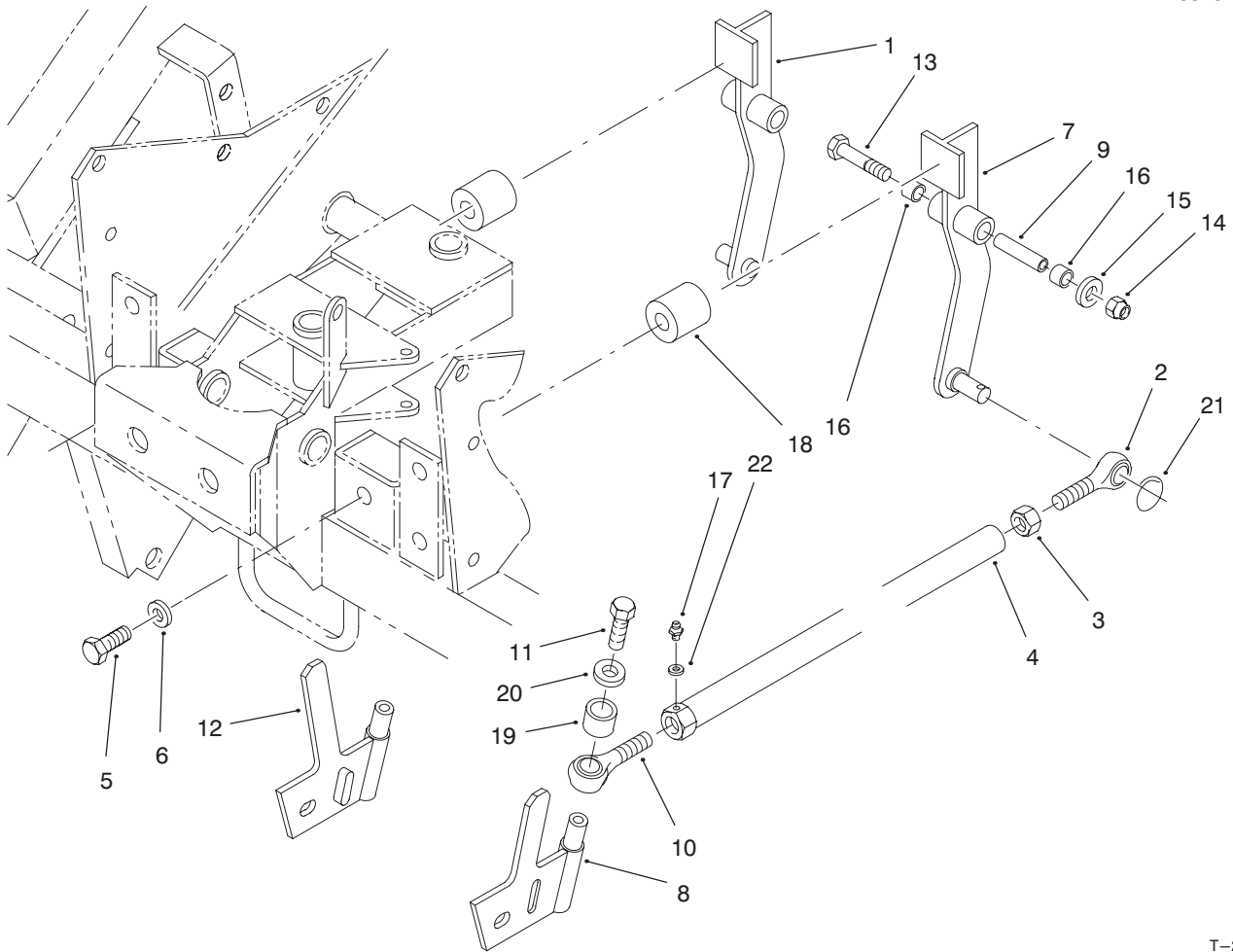
T-3315

Fuel Tank and Hydraulic Reservoir Assembly

Ref. No.	Part No.	Description	No. Used
1	93-3102	Cap-Fuel	1
2	33114-035	Screw	1
3	98-5837	Washer	2
4	33114-100	Screw	1
5	98-5648	Spacer	1
6	100-0000	Tank-Fuel (Incl. Ref. #44-47)	1
7	98-5647	Spacer	1
8	98-5983	Cover	1
9	99-3341	Hose-Fuel	1
12	92-9510	Hose-Fuel	1
13	74-0720	Tube-Manual	1
14	33114-020	Screw-HH	2
15	33094-00	Washer-Flat	2
16	2412-133	R-Clamp	2
17	98-5342	Hose	1
18	2412-129	Clamp-Hose	2
19	98-2876	Fitting-Hydraulic (Incl. Ref. #20)	2
20	237-80	O-Ring	2
21	98-0781	Reservoir-Hydraulic	1
23	322-3	Screw	2
24	237-71	O-Ring	1
25	76-0240	Dipstick Assembly	1
26	76-0220	Foam-Filter	1

Ref. No.	Part No.	Description	No. Used
27	76-0190	Cap-Oil	1
28	75-6840	Knob-Knurled	2
29	98-5994	Plate	1
32	98-5341	Hose	1
33	76-8210	Hose Assembly	1
34	237-22	O-Ring	2
35	340-3	Fitting-Hydraulic (Incl. Ref. #34 & 36)	1
36	237-79	O-Ring	2
37	54-0100	Head-Filter	1
38	340-18	Fitting-Hydraulic (Incl. Ref. #34 & 36)	1
39	76-6880	Hose Assembly	1
40	54-0110	Element-Oil Filter	1
41	3253-3	Washer-Lock	2
42	321-3	Screw-HH	2
43	93-6686	Decal-Hydraulic Oil	1
44	95-3968	Fitting-Fuel Shut-off	1
45	2412-108	Clamp	3
46	94-6765	Fitting-90 DEG Barbed	1
47	104047	Bushing	1
48	29-0590	Screen-Filler	1
*	76-0200	Oil Cap Assembly (Incl. Ref. #24-27)	1

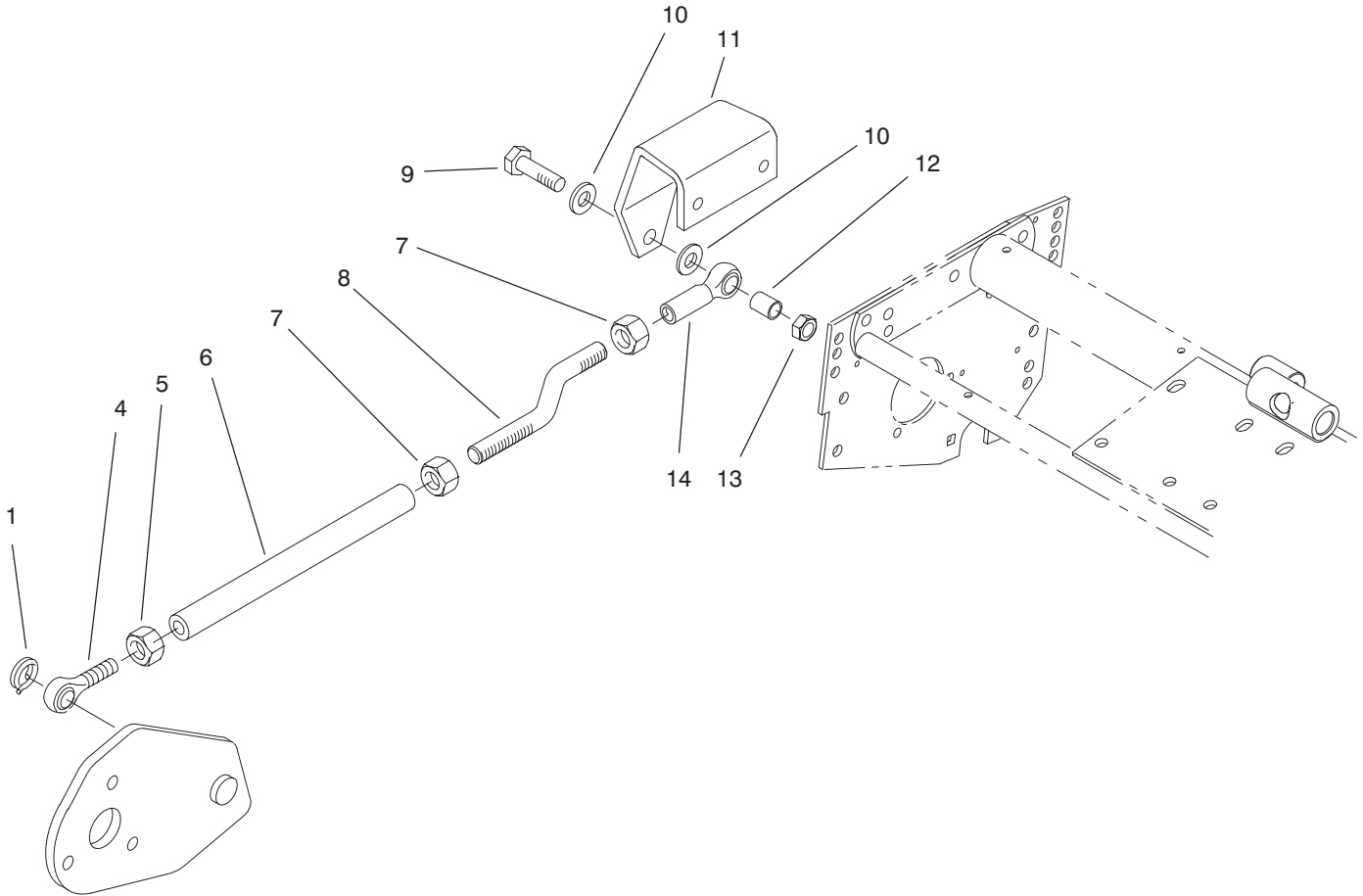
* Not Illustrated



T-2944-1

Front Suspension (Fixed Cutting Unit Model 02100)

Ref. No.	Part No.	Description	No. Used	Ref. No.	Part No.	Description	No. Used
1	98-5454	Tension Arm	1	12	98-5780	Mount-Tension, RH	1
2	98-5833	Rod End-RH	2	13	33114-080	Screw	2
3	33018-00	Nut-RH	2	14	33024-00	Nut-Lock	2
4	98-5783	Rod	2	15	33094-00	Washer	2
5	33114-016	Screw	2	16	98-5444	Bushing	4
6	42-9850	Washer-Lock	2	17	302-5	Fitting-Grease	2
7	98-5455	Tension Arm	1	18	98-5523	Stop-Rubber	2
8	98-5776	Mount-Tension, LH	1	19	98-5779	Spacer	2
9	98-5457	Spacer	2	20	3256-82	Washer	2
10	98-5834	Rod End-LH	2	21	98-5450	Ring	2
11	33114-016	Screw	2	22	33093-00	Washer-Flat	2

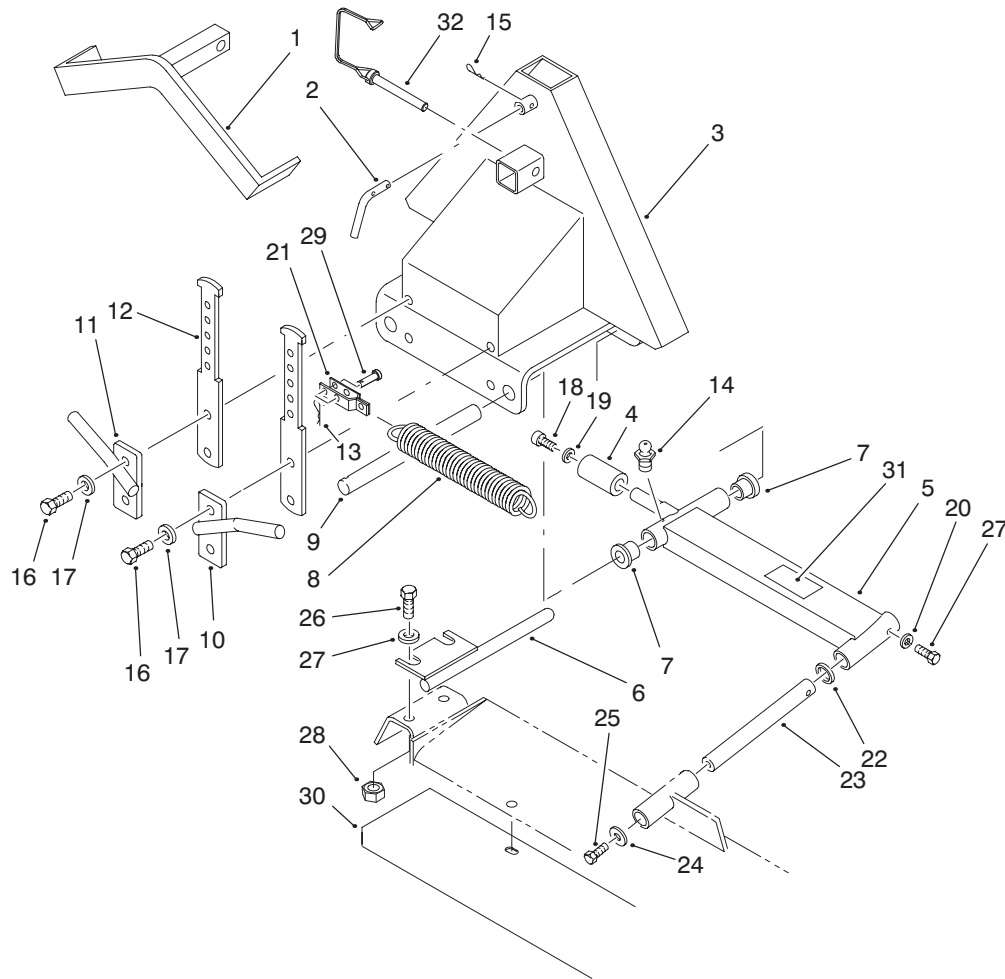


T-3032-1

Center Suspension (Fixed Cutting Unit Model 02100)

Ref. No.	Part No.	Description	No. Used
1	98-5450	Ring	2
4	98-5834	Rod End-LH	2
5	98-5838	Nut-LH	2
6	98-5807	Rod	2
7	33018-00	Nut-Hex.	4
8	98-5787	Rod	2

Ref. No.	Part No.	Description	No. Used
9	325-7	Screw-HH	2
10	3256-26	Washer-Flat	4
11	61-0900	Bracket-Carrier	2
12	98-5788	Spacer	2
13	3296-45	Nut-Lock	2
14	98-5786	Rod End-RH	2

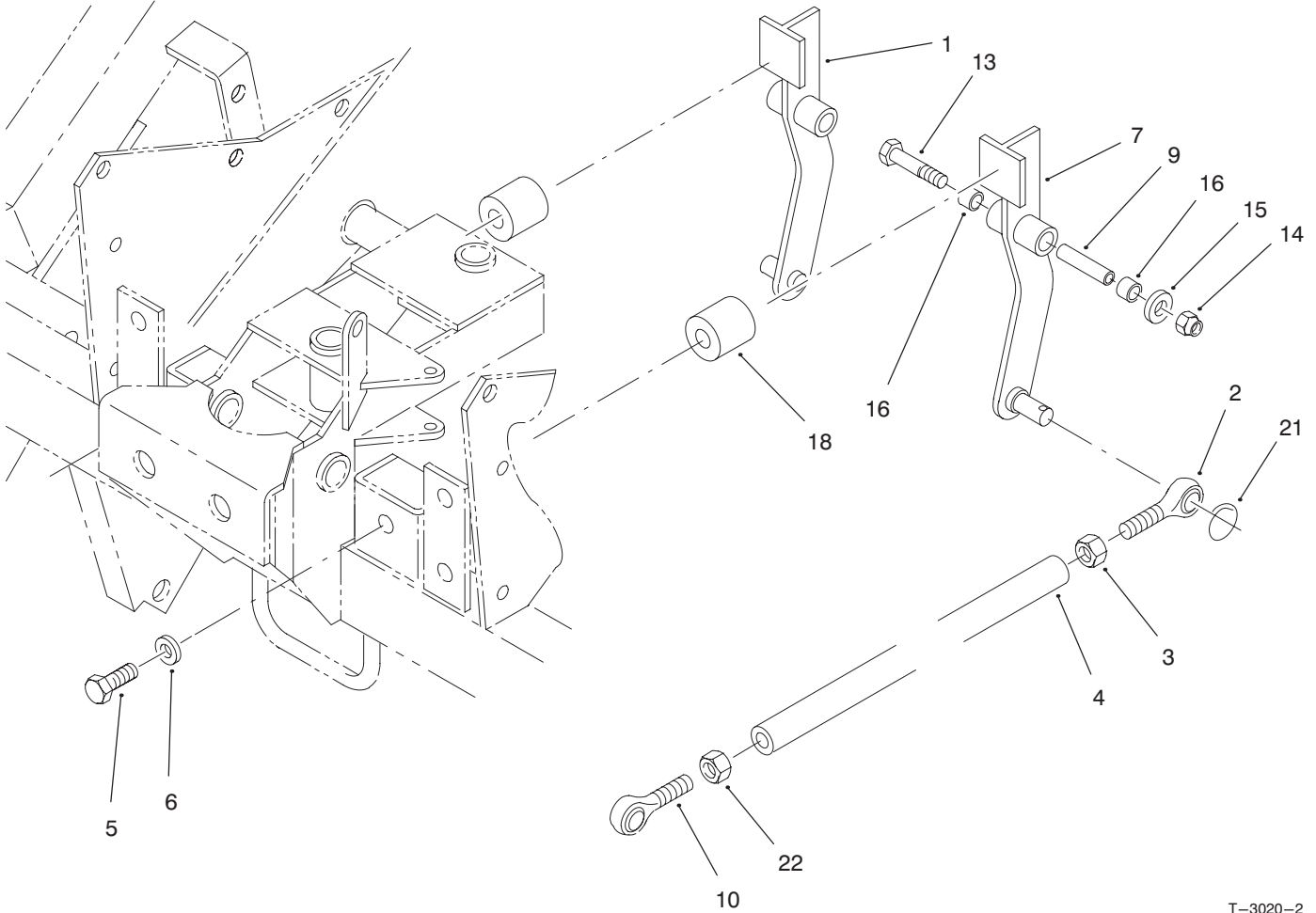


T-2982-2

Front Lift (Fixed Cutting Unit Model 02100)

Ref. No.	Part No.	Description	No. Used	Ref. No.	Part No.	Description	No. Used
1	98-5793	Latch-Transport	1	16	33115-040	Screw-HH	4
2	98-5771	Pin-Lock	1	17	48-9590	Washer-Lock	4
3	98-5762	A-Frame	1	18	99-3317	Screw-HSH	2
4	98-5753	Tube	2	19	33096-00	Washer-Flat	2
5	99-3325	LH Lift Arm Assembly (Incl. Ref. #7, 14, & 31)	1	20	3253-4	Washer-Lock	2
*	99-3324	RH Lift Arm Assembly (Incl. Ref. #7, 14 & 31)	1	21	93-6912	Shackle	2
6	98-5789	Guide-Stop, LH	1	22	256-115	Washer-Thrust	2
*	98-5792	Guide-Stop, RH	1	23	92-1815	Rod-Pivot	2
7	98-5449	Bushing-Flange	4	24	3256-6	Washer-Flat	2
8	5-0743	Spring	2	25	3234-32	Screw-HHF	2
9	98-5754	Pin	2	26	33114-030	Screw-HH	4
10	98-5775	Plate-Stop, LH	1	27	33094-00	Washer-Flat	4
11	98-5772	Plate-Stop, RH	1	28	33024-00	Nut-Lock	4
12	98-1818	Arm-Tension	2	29	283-75	Pin-Clevis	4
13	3290-467	Cotter-Hairpin	4	30	93-7722	Shield-Front Cutting Unit	2
14	302-5	Fitting-Grease	2	31	93-6696	Decal-Warning	2
15	3290-355	Cotter-Hairpin	1	32	98-5848	Pin	1
				*	98-5313	Belts-Jackshaft to Cutting Units	3

*Not Illustrated

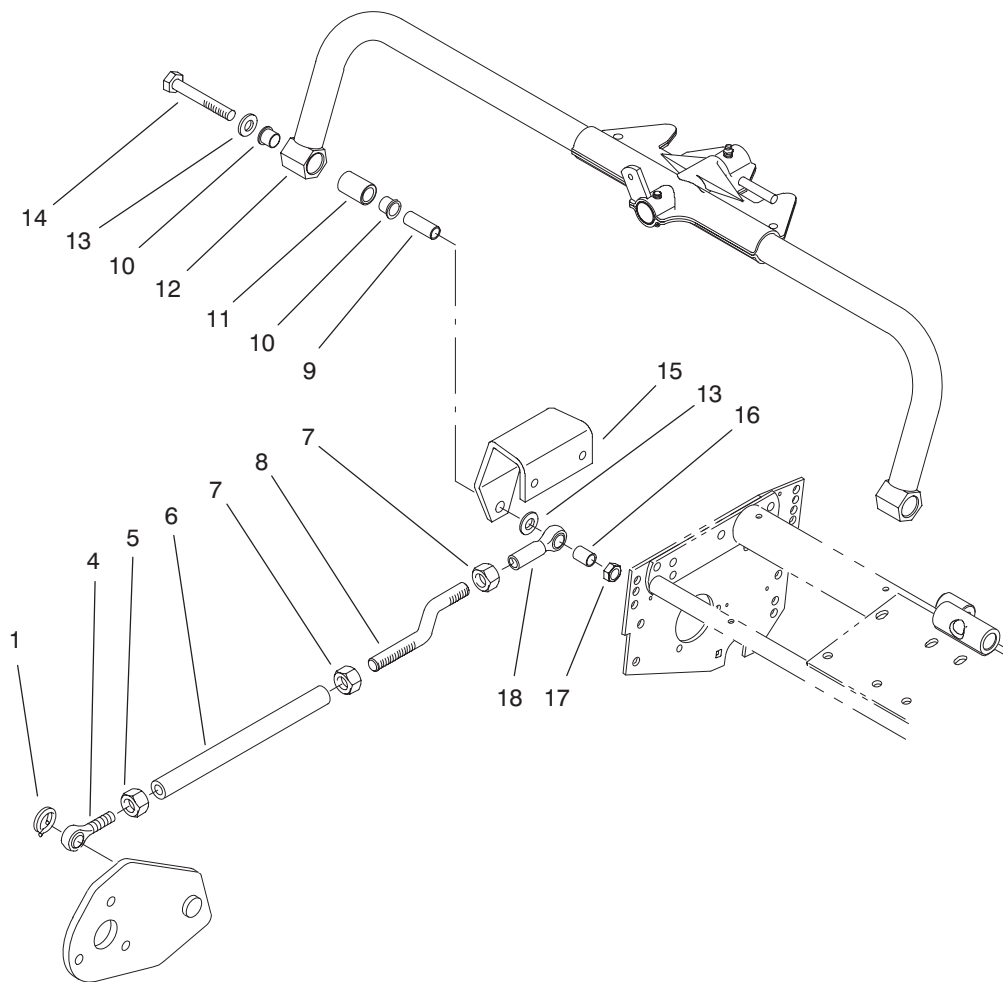


T-3020-2

Front Suspension (Floating Cutting Unit Model 02101)

Ref. No.	Part No.	Description	No. Used
1	98-5454	Tension Arm	1
2	98-5833	Rod End-RH	2
3	33018-00	Nut-RH	2
4	98-5810	Rod	2
5	33114-016	Screw	2
6	42-9850	Washer-Lock	2
7	98-5455	Tension Arm	1
9	98-5457	Spacer	2

Ref. No.	Part No.	Description	No. Used
10	98-5834	Rod End-LH	2
13	33114-030	Screw	2
14	33024-00	Nut-Lock	2
15	33094-00	Washer	2
16	98-5444	Bushing	4
18	98-5523	Stop-Rubber	2
21	98-5450	Ring	2
22	98-5838	Nut-LH	2

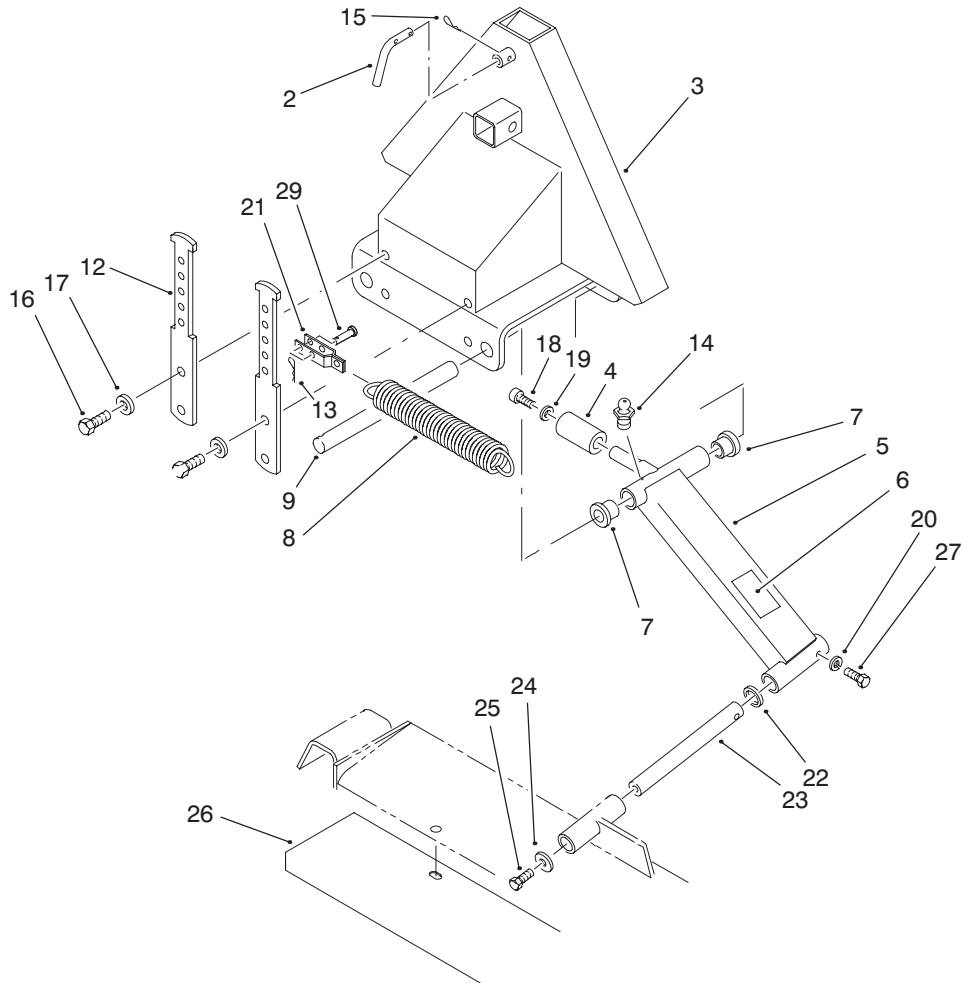


T-3033-2

Center Suspension (Floating Cutting Unit Model 02101)

Ref. No.	Part No.	Description	No. Used
1	98-5450	Ring	2
4	98-5834	Rod End-LH	2
5	98-5838	Nut-LH	2
6	98-5807	Rod	2
7	33018-00	Nut-Hex.	4
8	98-5787	Rod	2
9	61-1370	Spacer	2
10	256-285	Bushing-Flange	4

Ref. No.	Part No.	Description	No. Used
11	61-0710	Bushing Assembly	2
12	98-5811	Carrier Frame	1
13	3256-26	Washer-Flat	4
14	325-14	Screw-HH	2
15	61-0900	Bracket-Carrier	2
16	98-5788	Spacer	2
17	3296-45	Nut-Lock	2
18	98-5786	Rod End-RH	2

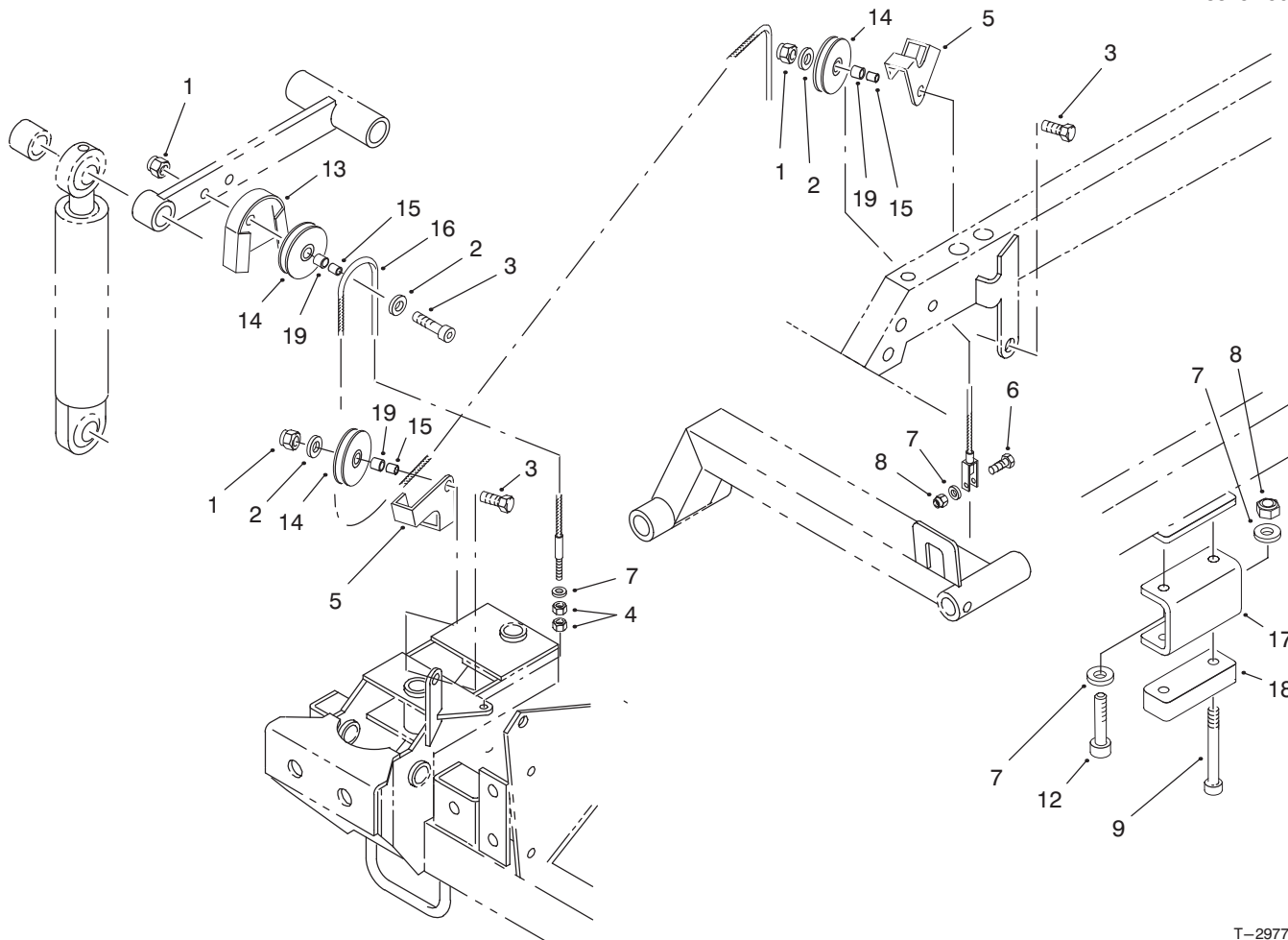


T-2994-1

Front Lift (Floating Cutting Unit Model 02101)

Ref. No.	Part No.	Description	No. Used	Ref. No.	Part No.	Description	No. Used
2	98-5771	Pin-Lock	1	16	33115-025	Screw-HH	4
3	98-5762	A-Frame	1	17	48-9590	Washer-Lock	4
4	98-5753	Tube	2	18	99-3317	Screw-HSH	2
5	99-3322	LH Lift Arm Assembly (Incl. Ref. #6, 7 & 14)	1	19	33096-00	Washer-Flat	2
*	99-3323	RH Lift Arm Assembly (Incl. Ref. #6, 7 & 14)	1	20	3253-4	Washer-Lock	2
6	93-6696	Decal-Warning	2	21	93-6912	Shackle	2
7	98-5449	Bushing-Flange	4	22	256-115	Washer-Thrust	2
8	5-0743	Spring	2	23	92-1815	Rod-Pivot	2
9	98-5754	Pin	2	24	3256-6	Washer-Flat	2
12	92-1818	Arm-Tension	2	25	3234-32	Screw-HHF	2
13	3290-467	Cotter-Hairpin	4	26	93-7722	Shield-Front Cutting Unit	2
14	302-5	Fitting-Grease	2	29	283-75	Pin-Clevis	4
15	3290-355	Cotter-Hairpin	1	*	98-5313	Belts-Jackshaft to Cutting Units	3

*Not Illustrated

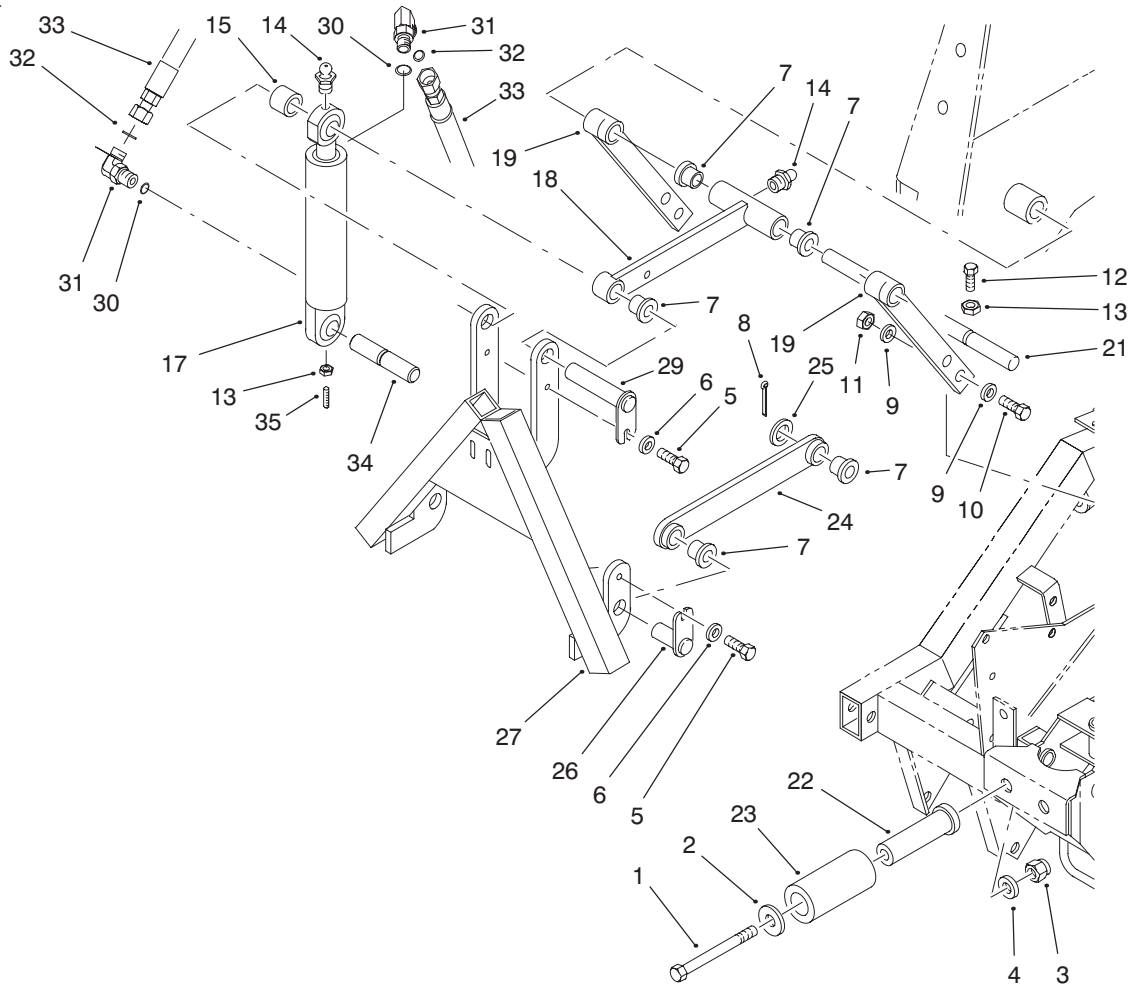


T-2977-1

Lift Cable and Pulley Assembly

Ref. No.	Part No.	Description	No. Used
1	3296-39	Nut-Lock	3
2	3256-4	Washer-Flat	3
3	323-9	Screw-HH	3
4	3219-2	Nut-Hex.	2
5	83-9130	Keeper-Cable	2
6	33114-030	Screw-HH	1
7	33094-00	Washer-Flat (Model 02100 Only)	10
7	33094-00	Washer-Flat	2
8	33024-00	Nut-Lock (Model 02100 Only)	5
8	33024-00	Nut-Lock	1
9	98-5828	Screw-Socket Head	4

Ref. No.	Part No.	Description	No. Used
12	98-5829	Screw-Socket Head (Model 02100 Only)	4
13	98-5506	Keeper-Cable	1
14	61-3210	Cable Pulley Assembly (Incl. Ref. #19)	3
15	61-3230	Spacer	3
16	98-5306	Cable-Lift	1
17	98-5761	Bracket-Spacer (Model 02100 Only)	2
18	98-5760	Stop-Rubber	2
19	256-1	Bushing-Sleeve	3

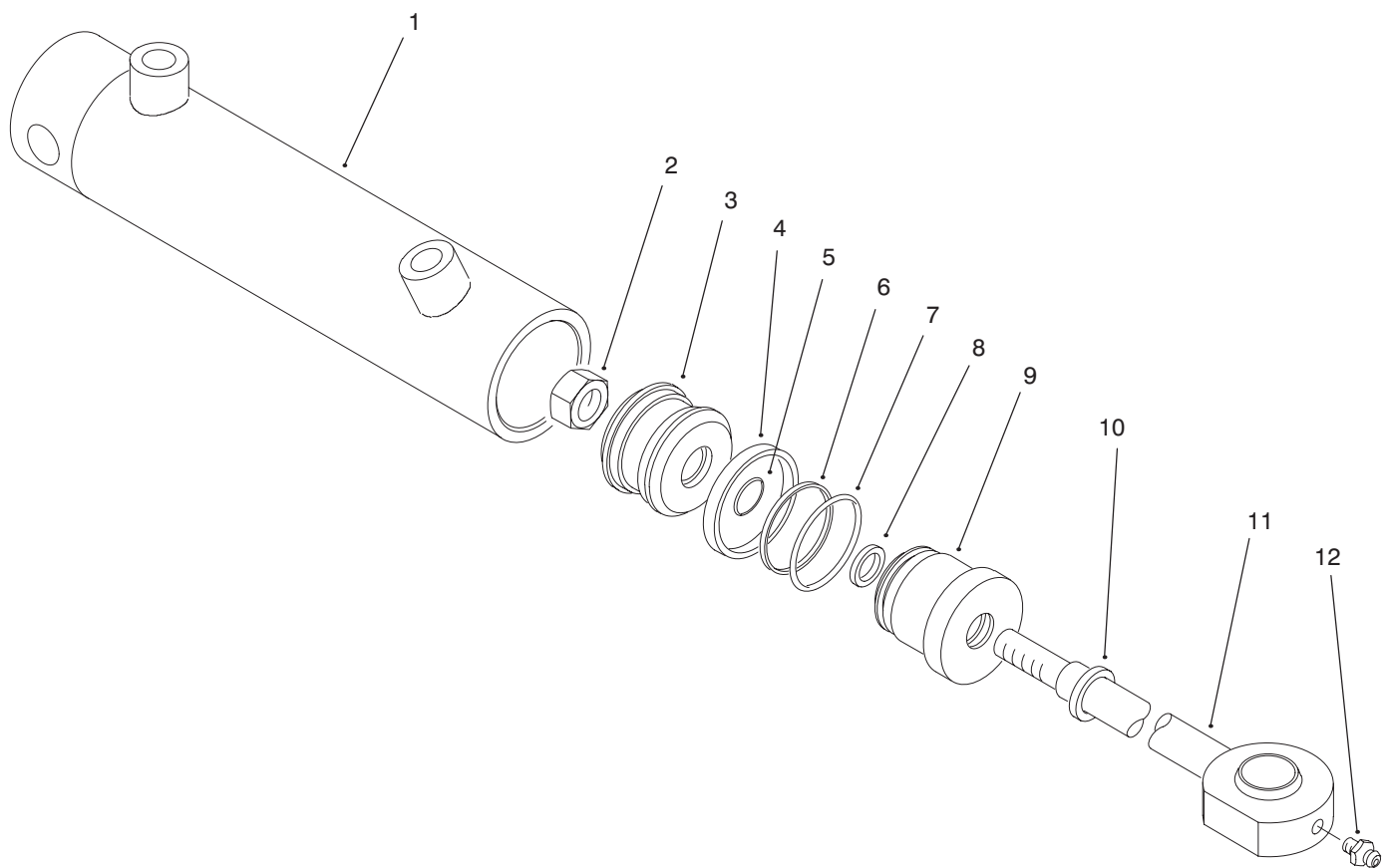


T-2983

Front Lift System Assembly

Ref. No.	Part No.	Description	No. Used
1	33118-160	Screw-HH	2
2	98-3333	Washer-Flat	2
3	33028-00	Nut-Lock	2
4	33098-00	Washer-Flat	2
5	33114-016	Screw-HH	3
6	33094-00	Washer-Flat	3
7	98-5449	Bushing-Flange	7
8	3272-23	Pin-Cotter	2
9	33095-00	Washer-Flat	8
10	33115-030	Screw-HH	4
11	33025-00	Nut-Lock	4
12	33113-016	Screw-HH	1
13	33013-00	Nut-Hex.	2
14	302-5	Fitting-Grease	2
15	98-5465	Spacer	1
17	98-5441	Cylinder-Hydraulic (Incl. Ref. #16)	1

Ref. No.	Part No.	Description	No. Used
18	98-5501	Bar-Upper Side	1
19	98-5634	Support	2
21	98-5499	Pin	1
22	98-5490	Stud-Pivot	2
23	98-5502	Roller	2
24	98-5504	Side Bar Assembly	2
25	86-1480	Washer	2
26	98-5494	Pin-Pivot	2
27	98-5496	A-Frame	1
29	98-5493	Pin-Pivot	1
30	237-78	O-Ring	2
31	340-132	Fitting-Hydraulic (Incl. Ref. #30 & 32)	2
32	237-21	O-Ring	2
33	98-5343	Hose Assembly	2
34	98-5458	Pin	1
35	100-0005	Screw-Set	1



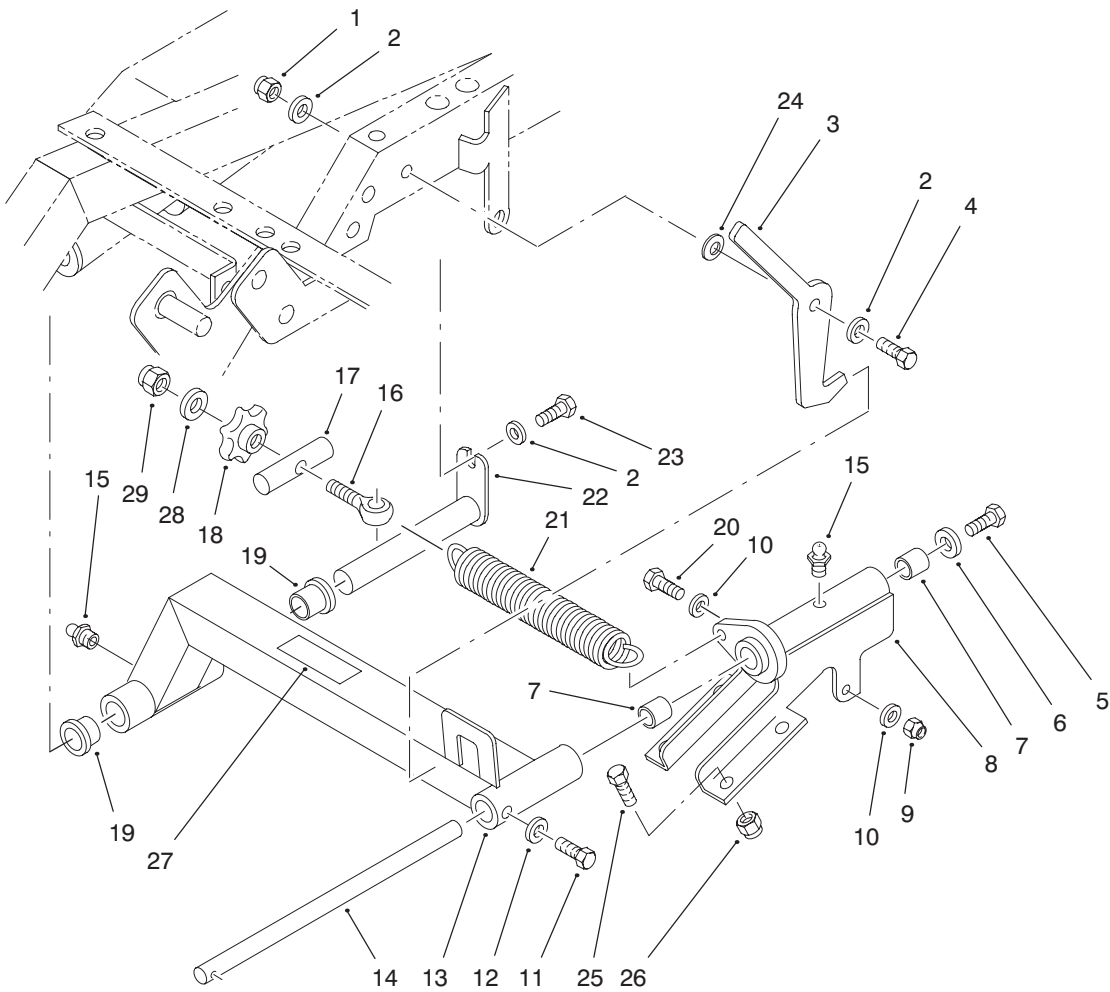
T-3050-1

Hydraulic Cylinder No. 98-5441

Ref. No.	Part No.	Description	No. Used
1	99-3300	Barrel	1
2	99-3304	Nut-Lock	1
3	99-3303	Piston	1
4	99-3310	Seal Assembly-Piston	A/R
5	99-3309	Seal-O-Ring	1
6	99-3308	Seal-O-Ring	1
7	99-3306	Seal-O-Ring	1

Ref. No.	Part No.	Description	No. Used
8	99-3307	Seal-Rod	1
9	99-3302	Head	1
10	99-3305	Ring-Wiper	1
11	99-3301	Rod	1
12	302-5	Fitting-Grease	1
*	99-3311	Kit-Seal Repair	A/R

*Not Illustrated



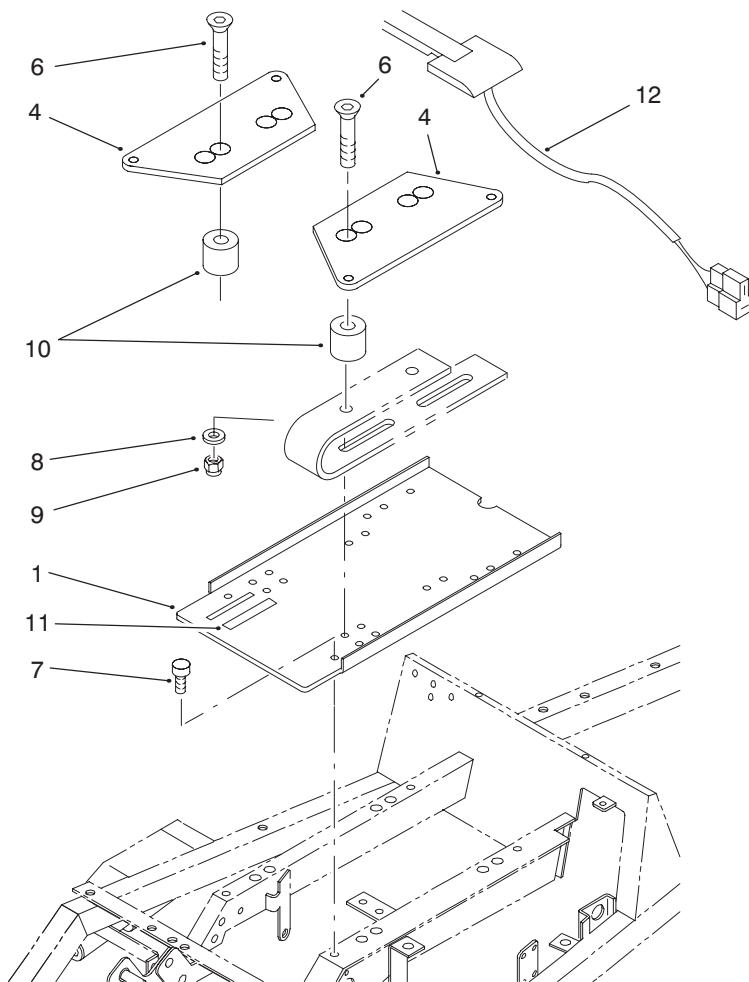
T-3019-1

Center Lift(Fixed and Floating Cutting Units Models 02100 and 02101)

Ref. No.	Part No.	Description	No. Used
1	33024-00	Nut-Lock	1
2	33094-00	Washer-Flat	3
3	98-5524	Latch-Center	1
4	33114-025	Screw-HH	1
5	3234-32	Screw	1
6	3256-6	Washer	1
7	3-0348	Bushing	2
†8	98-5755	Mount-Cutting Unit	1
9	3296-39	Nut-Lock	1
10	3256-24	Washer-Flat	2
11	322-4	Screw	1
12	3253-4	Washer-Lock	1
13	99-3326	Center Lift Arm Assembly (Incl. Ref. #15, 19 & 27)	1
14	98-5338	Rod-Pivot	1

Ref. No.	Part No.	Description	No. Used
15	302-5	Fitting-Grease	2
16	98-5844	Screw-Eye	1
17	98-5517	Mount-Spring	1
18	98-5519	Knob	1
19	98-5449	Bushing-Flange	2
20	323-12	Screw	1
21	5-0743	Spring-Extension	1
22	98-5514	Shaft-Lift Pivot	1
23	33114-016	Screw-HH	1
24	42-9850	Washer-Spring	1
25	323-6	Screw-HH	2
26	3296-39	Nut-Lock	2
27	93-6696	Decal-Warning	1
28	33095-00	Washer	1
29	33015-00	Nut-Hex.	1

†Fixed Cutting Unit Only



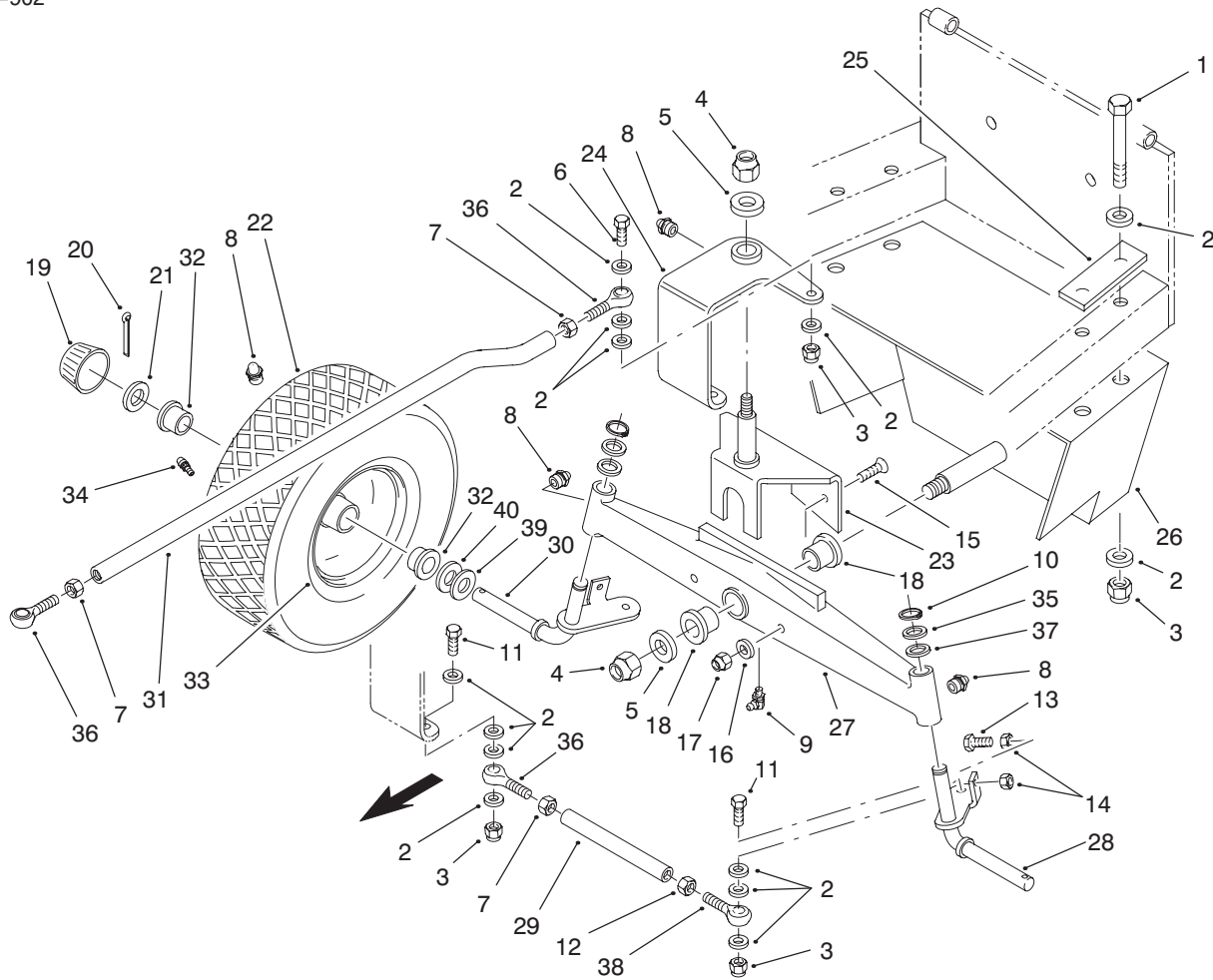
T-2945

Seat Mount Assembly

Ref. No.	Part No.	Description	No. Used
1	98-5645	Plate-Seat	1
4	98-5469	Mount-Seat	2
6	33114-060	Screw	4
7	75-6840	Knob-Knurled	4
8	33094-00	Washer	4
9	33024-00	Nut-Lock	4

Ref. No.	Part No.	Description	No. Used
10	98-5487	Spacer	4
11	93-9077	Decal-Latch	1
12	38-1420	Switch-Seat	1
*	92- 6282	Switch-Seat	1
*	32144-114	Screw-HWH	2
*	105-6247	Harness-Wire	1

* Not illustrated (Use with Seat 104-4620)



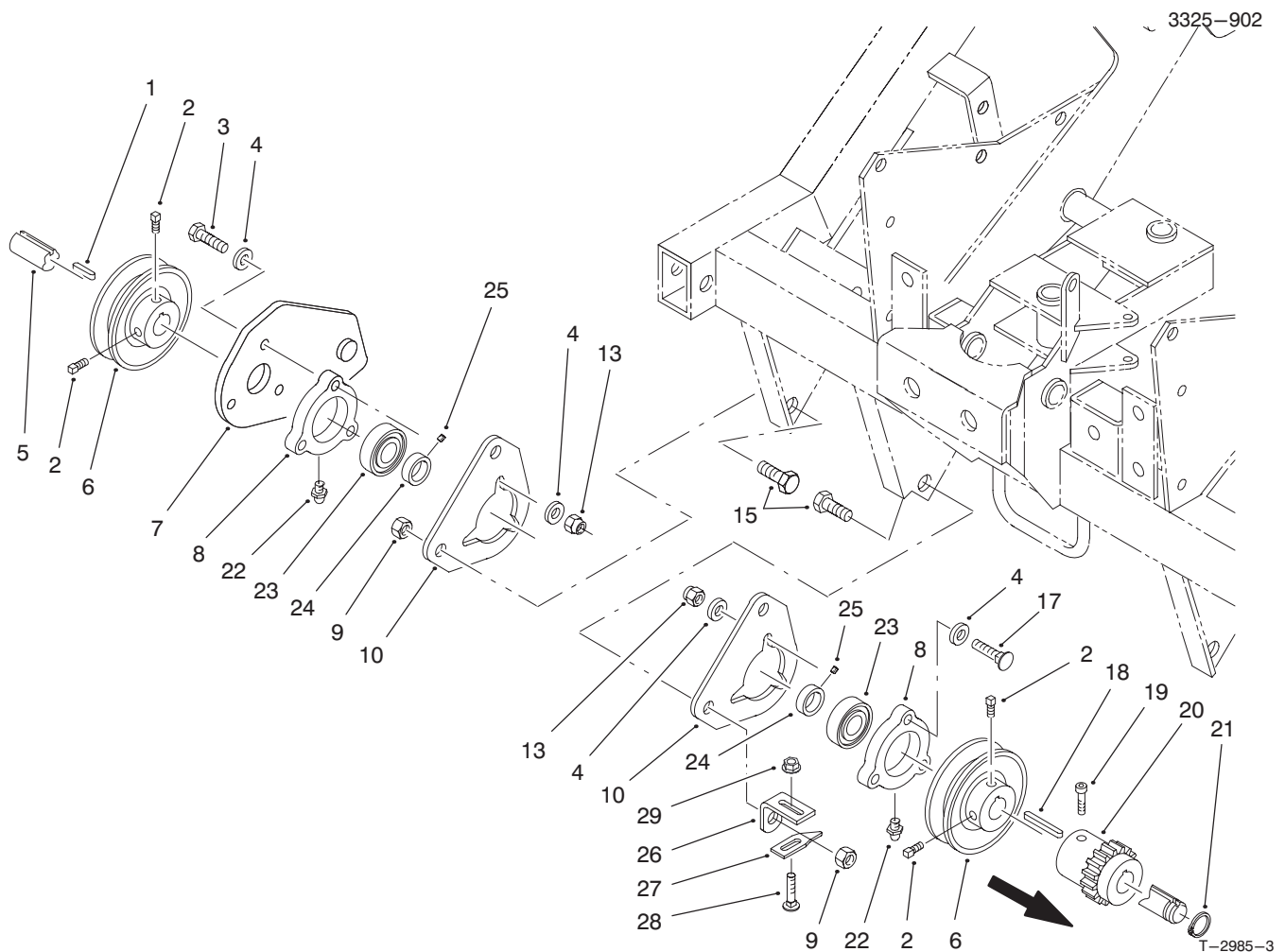
T-2972-2

Rear Two Wheel Axle Assembly

Ref. No.	Part No.	Description	No. Used
1	33115-090	Screw	4
2	33095-00	Washer	26
3	33025-00	Nut	9
4	33028-00	Nut	2
5	33098-00	Washer	2
6	33115-045	Screw	1
7	33015-00	Nut	4
8	302-5	Fitting-Grease	5
9	1481	Fitting-Grease	1
10	32120-93	Ring-Retaining	2
11	33115-040	Screw	4
12	98-5830	Nut-LH	2
13	33114-040	Screw	2
14	33014-00	Nut	4
15	99-3313	Screw-Countersunk	2
16	33094-00	Washer	2
17	33024-00	Nut	2
18	98-5449	Bushing-Flange	2
19	111951	Hubcap	2
20	3272-17	Pin-Cotter	2
21	111952	Washer-Wheel	2

Ref. No.	Part No.	Description	No. Used
22	117127	Tire-16 x 6.5-8	2
23	98-5563	Mount-Pivot Plate	1
24	98-5562	Plate-Pivot	1
25	98-5542	Bar-Flat	2
26	98-5558	Mount-Axle	1
27	98-5332	Axle-Rear	1
28	98-5546	Spindle-Rear Axle, LH	1
29	98-5551	Rod-Steering	2
30	98-5547	Spindle-Rear Axle, RH	1
31	98-5463	Tie Rod	1
32	110513	Bearing-Ball	4
33	98-5317	Rim-Wheel	2
34	5108	Valve-Tire	2
35	1278	Washer-Shim	2
36	98-5442	Ball Joint-RH	4
37	5210	Washer-Shim	4
38	98-5443	Ball Joint-LH	2
39	1278	Shim	A/R
40	5210	Shim	A/R
*	98-5318	Rear Wheel Assembly (Incl. Ref. #22 & 32-34)	2

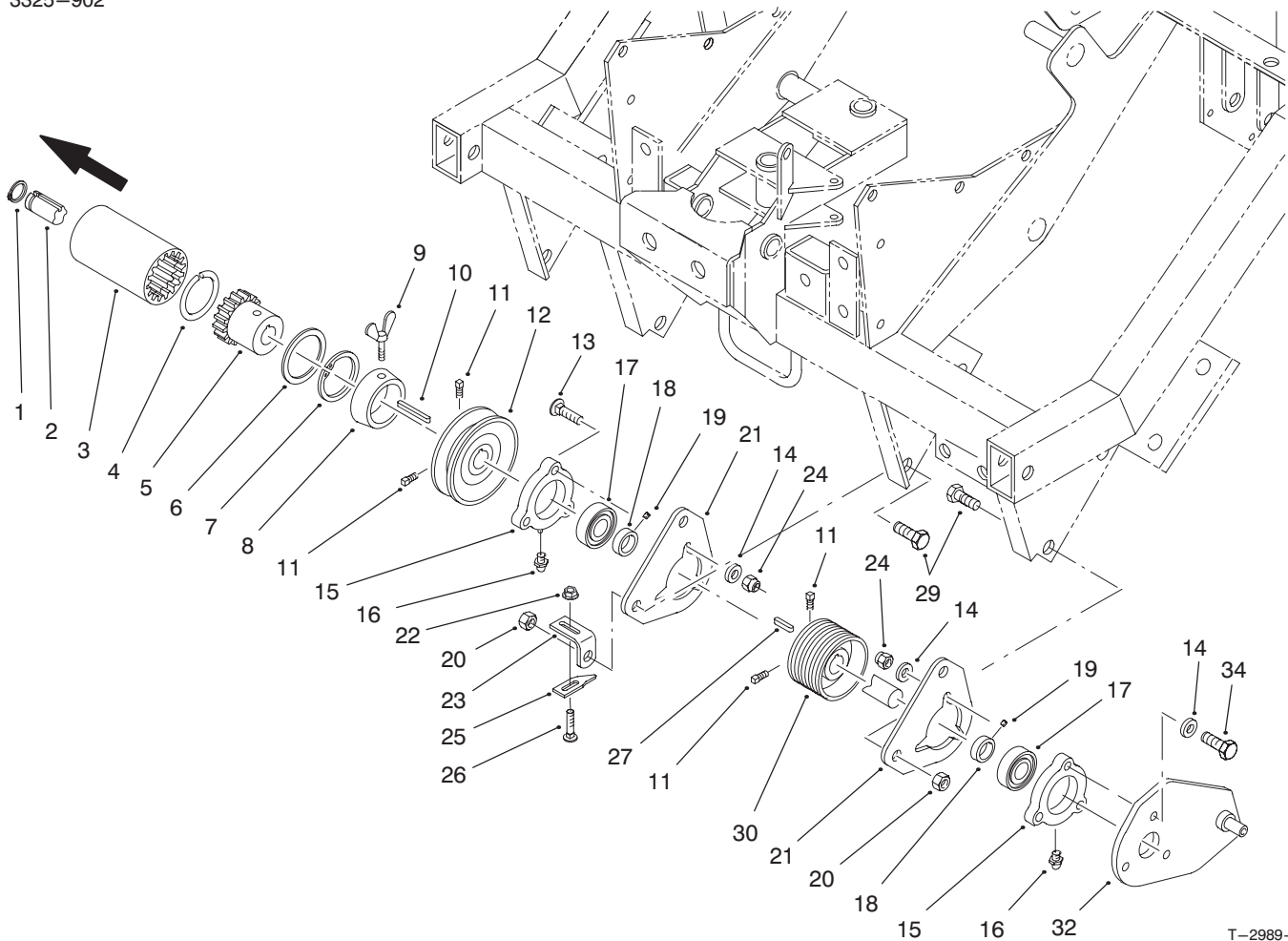
*Not Illustrated



Right End Counter Shaft Assembly

Ref. No.	Part No.	Description	No. Used
1	5-7280	Key-Square	1
2	3246-4	Screw-Set	4
3	33114-040	Screw	3
4	33094-00	Washer-Flat	12
5	98-5339	Shaft-Front	1
6	61-0140	Pulley	2
7	98-5568	Mount-Tie Rod, RH	1
8	76-2460	Bearing Assembly (Incl. Ref. #22-25)	2
9	3296-23	Nut-Flange Lock	4
10	61-2350-03	Mount-Bearing	2
13	33024-00	Nut-Lock	6
15	3234-32	Screw-HH	4

Ref. No.	Part No.	Description	No. Used
17	33124-035	Screw-Carriage	3
18	98-5567	Key-Square	1
19	98-5831	Screw-Set	1
20	98-5566	Hub-RH	1
21	32120-14	Ring-Retaining	1
22	302-5	Fitting-Grease	2
23	94-3405	Bearing-Ball	2
24	251-77	Collar-Locking	2
25	3245-35	Screw-Set	2
26	76-2440	Support-Debris Pulley	1
27	76-2430	Bracket-Debris Pulley	1
28	3229-11	Bolt-Carriage	1
29	32128-10	Nut-Lock HHH	1



T-2989-3

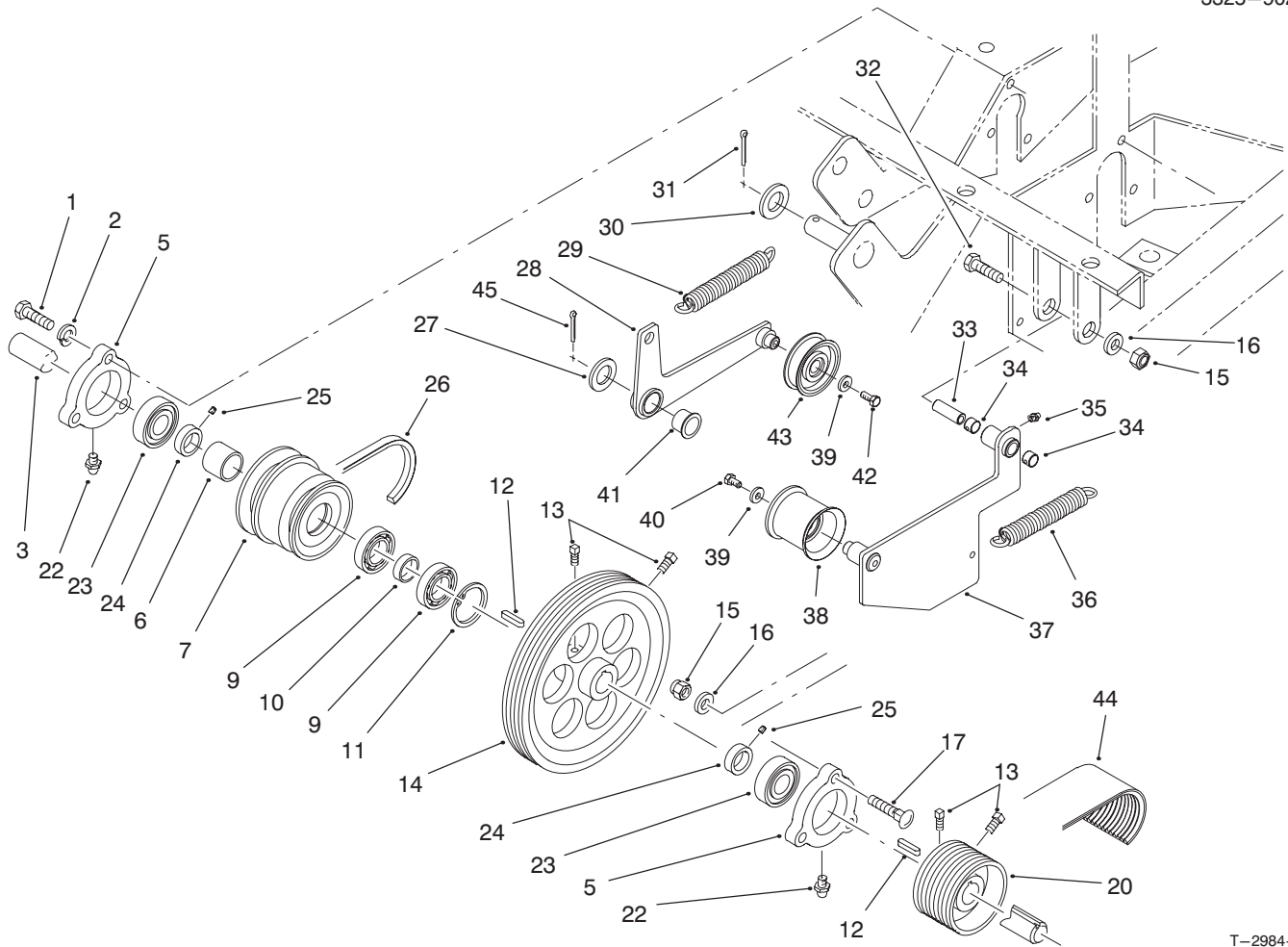
Left End Counter Shaft Assembly (Continued)

Ref. No.	Part No.	Description	No. Used
1	32120-14	Ring-Retaining	1
2	98-5339	Shaft-Front	1
3	98-5594	Coupler	1
†4		Ring-Retaining	1
5	98-5593	Hub-Left (Incl. Ref. #8)	1
†6		Washer	1
†7		Ring-Retaining	1
†8		Cover-Dust	1
9	98-5595	Screw-Wing	1
10	98-5567	Key-Square	1
11	3246-4	Screw-Set	4
12	61-0140	Pulley	1
13	33124-035	Screw-Carriage	3
14	33094-00	Washer	9
15	76-2460	Bearing Assembly (Incl. Ref. #16-19)	2
16	302-5	Fitting-Grease	2

Ref. No.	Part No.	Description	No. Used
17	94-3405	Bearing-Ball	2
18	251-77	Collar-Locking	2
19	3245-35	Screw-Set	2
20	3296-23	Nut-Lock NI	4
21	61-2350-03	Mount-Bearing	2
22	32128-10	Nut-Lock HHF	1
23	76-2440	Support-Debris Pulley	1
24	33024-00	Nut-Lock	6
25	76-2430	Bracket-Debris Pulley	1
26	3229-11	Bolt-Carriage	1
27	98-5597	Key-Square	1
29	3234-32	Screw-HH	4
30	98-5598	Pulley	1
32	98-5596	Mount-Tie Rod, LH	1
34	33114-040	Screw-HH	3
*	98-5592	Coupler Assembly (Incl. Ref. #3-8)	1

*Not Illustrated

†Not Serviceable Separately

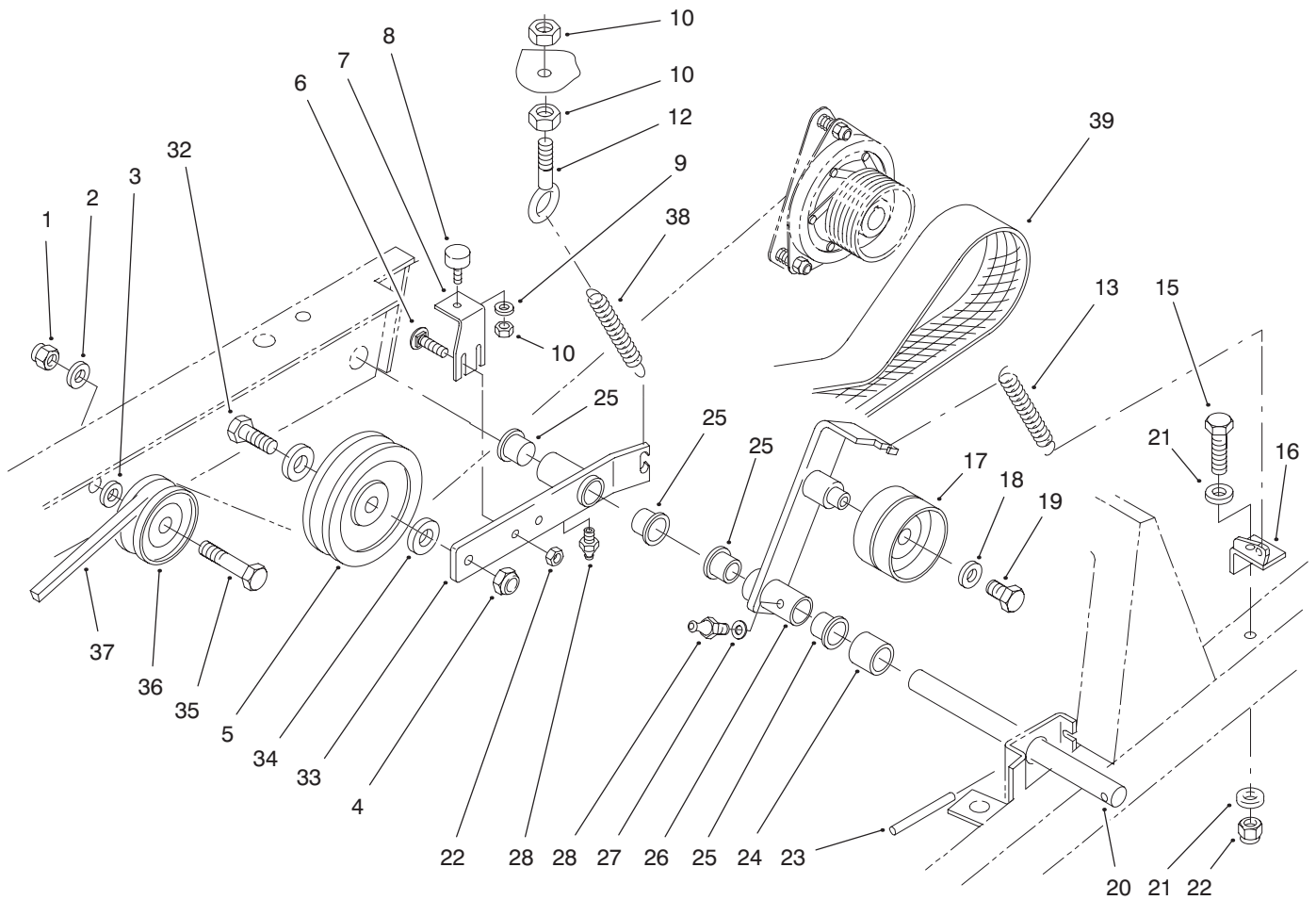


T-2984-2

Upper Shaft Assembly

Ref. No.	Part No.	Description	No. Used
1	33114-030	Screw-HH	3
2	68-9420	Washer-Lock	3
3	98-5340	Shaft-Upper	1
5	76-2460	Bearing Assembly (Incl. Ref. #22-25)	2
6	98-5601	Spacer	1
7	98-5602	Pulley-Double	1
9	98-5335	Bearing	2
10	98-5600	Spacer	1
11	32120-65	Ring-Retaining	1
12	98-5603	Key-Square	2
13	3246-4	Screw-Set	4
14	98-5351	Pulley	1
15	33024-00	Nut	4
16	33094-00	Washer-Flat	4
17	33124-035	Screw-Carriage	3
20	98-5604	Pulley	1
22	302-5	Fitting-Grease	2
23	94-3405	Bearing-Ball	2
24	251-77	Collar-Locking	2
25	3245-35	Screw-Set	2

Ref. No.	Part No.	Description	No. Used
26	98-5310	V-Belt	1
27	86-1480	Washer	1
28	98-5621	Idler Arm Assembly	1
29	51-3650	Spring	1
30	33098-00	Washer-Flat	1
31	3272-11	Pin-Cotter	1
32	33114-070	Screw-HH	1
33	98-5616	Spacer	1
34	98-5444	Bushing	2
35	302-5	Fitting-Grease	1
36	76-1670	Spring-Extension	1
37	98-5612	Idler Arm-Front	1
38	98-5840	Pulley-Idler	1
39	88-7200	Washer-Flat	2
40	33114-016	Screw-HH	1
41	98-5449	Bushing-Flange	1
42	33114-020	Screw-HH	1
43	98-5626	Pulley-Idler	1
44	98-5314	V-Belt	1
45	3272-23	Pin-Cotter	1

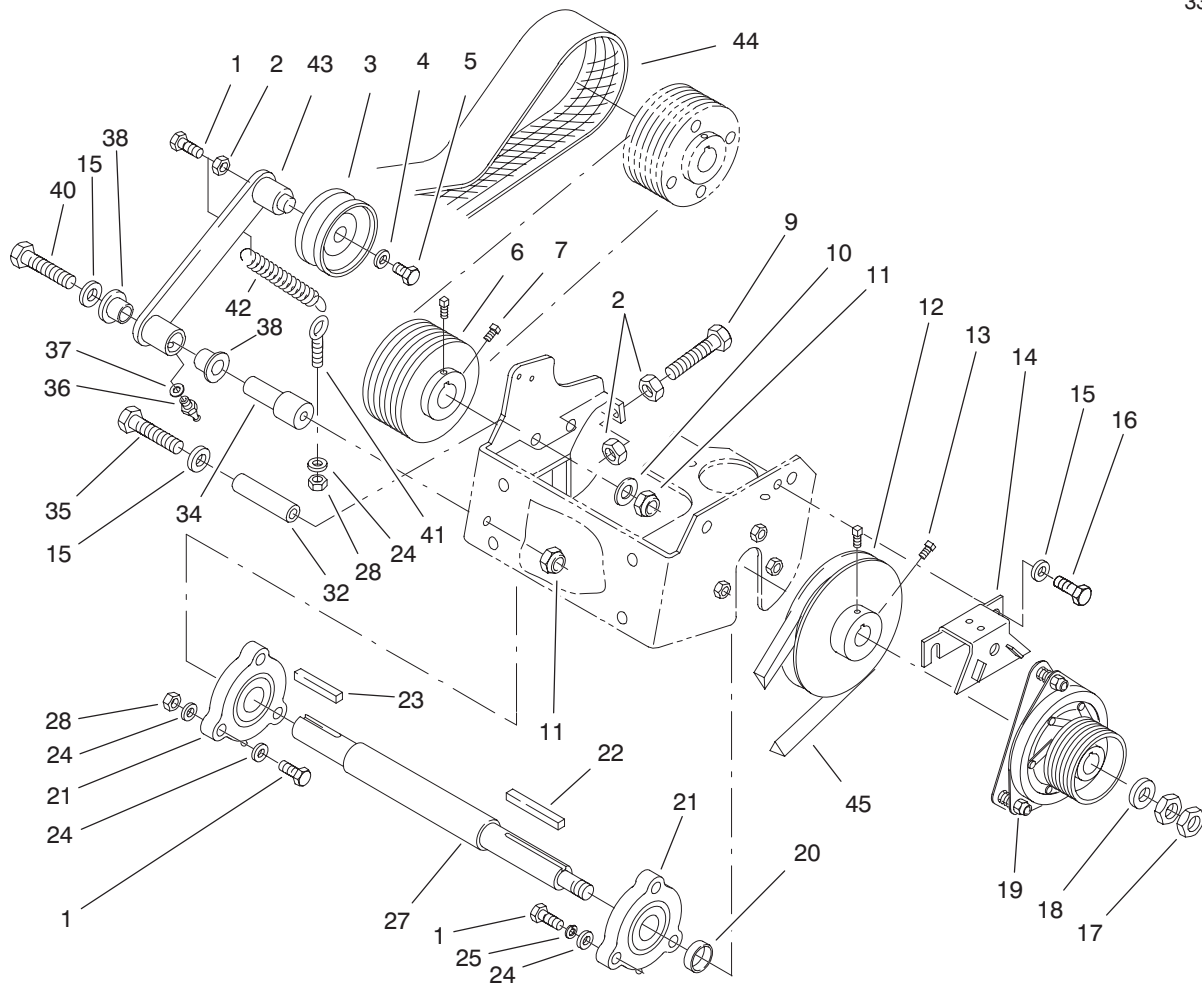


T-3269

Traction Drive Assembly

Ref. No.	Part No.	Description	No. Used
1	3296-39	Nut-Flange Lock	1
2	3256-4	Washer-Flat	1
3	33095-00	Washer-Flat	1
4	3296-44	Nut-Lock	1
5	36-3220	Pulley-Idler	1
6	33124-020	Screw-CARR	2
7	100-0024	Stop-Idler Arm	1
8	100-0047	Buffer	1
9	68-9420	Washer-Lock	1
10	33014-00	Nut-Hex	3
12	100-0029	Eyebolt	1
13	98-5825	Spring-Extension	1
15	33114-080	Screw-HH	1
16	100-0025	Mount-Spring	1
17	98-5625	Pulley-Idler	1
18	88-7200	Washer	1
19	33114-020	Screw	1

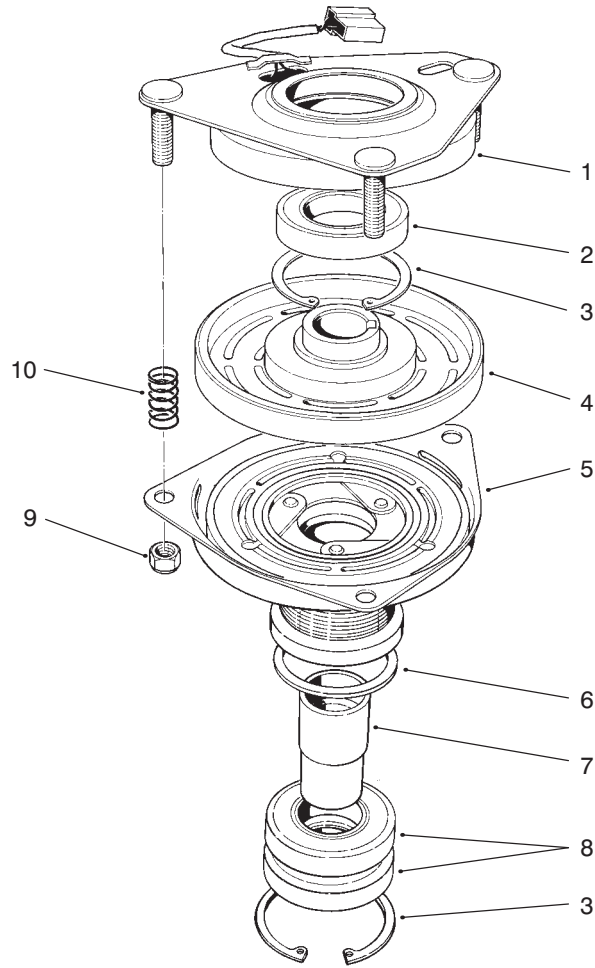
Ref. No.	Part No.	Description	No. Used
20	98-5611	Shaft	1
21	33094-00	Washer-Flat	2
22	33024-00	Nut-Lock	3
23	98-5826	Pin	1
24	98-5610	Tube	1
25	98-5824	Bushing	4
26	100-0026	Arm-Idler	1
27	33093-00	Washer-Flat	1
28	302-5	Fitting-Grease	2
32	323-9	Screw-HH	1
33	100-0027	Arm-Idler	1
34	3256-24	Washer-Flat	1
35	323-8	Screw-HH	1
36	100-0015	Idler-V-Belt	1
37	99-3337	V-Belt	1
38	51-3650	Spring-Extension	1
39	99-3338	V-Belt, Poly	1



T-3270

Transmission Shaft Assembly

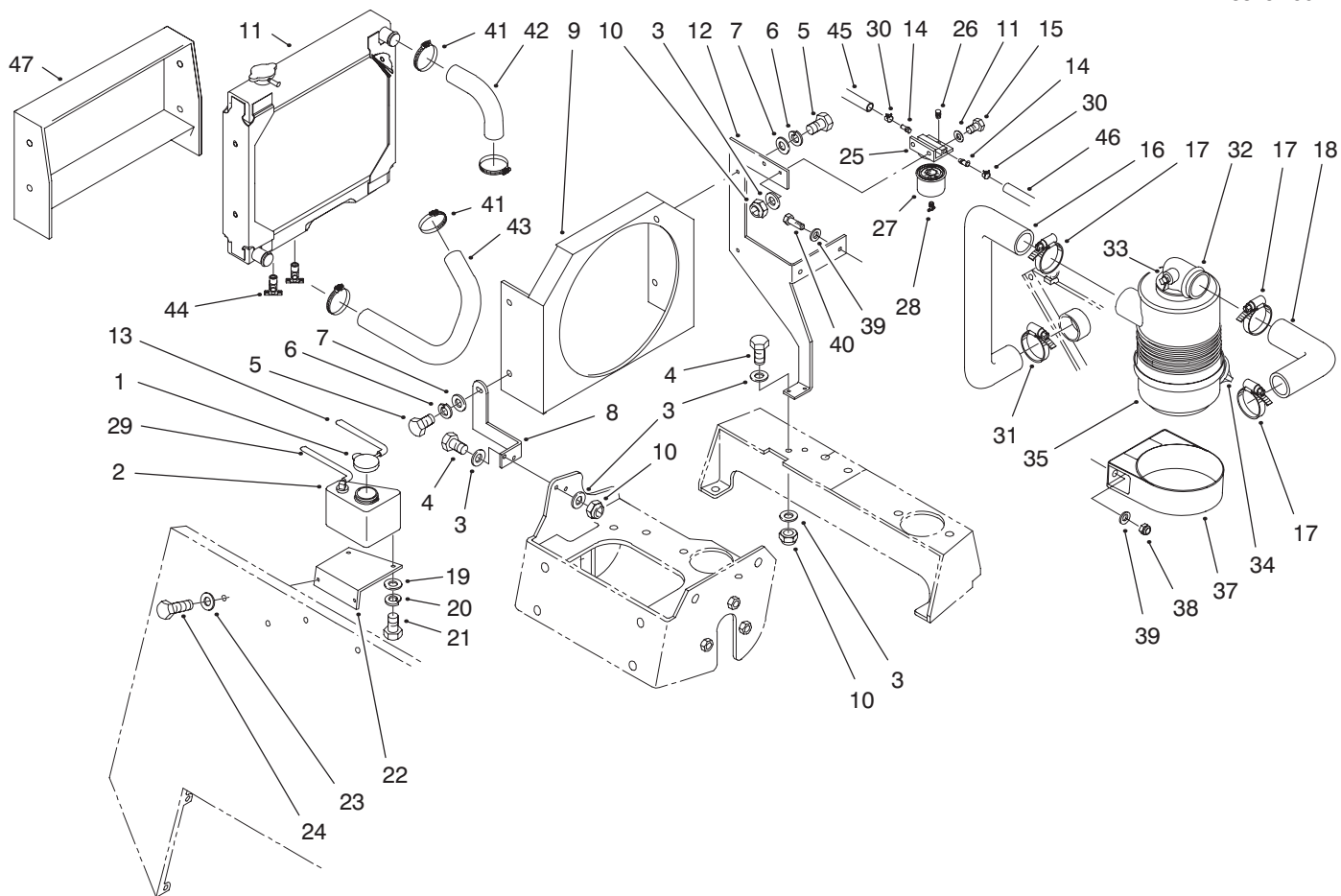
Ref. No.	Part No.	Description	No. Used	Ref. No.	Part No.	Description	No. Used
1	33114-035	Screw-HH	7	21	76-2460	Bearing Assembly	2
2	33014-00	Nut-Hex	3	22	5-0930	Key-Shaft	1
3	98-5840	Pulley-Idler	1	23	98-5603	Key-Square	1
4	88-7200	Washer	1	24	33094-00	Washer-Flat	10
5	33114-016	Screw-HH	1	25	68-9420	Washer-Spring Lock	3
6	98-5598	Pulley-Multirib	1	27	100-0030	Shaft-Transmssion	1
7	3246-4	Screw-Set	2	28	33024-00	Nut-Lock NI	4
9	33114-050	Screw-HH	1	32	100-0031	Tube	1
10	33095-00	Washer-Flat	1	34	100-0032	Bolt	1
11	33025-00	Nut-Lock NI	2	35	33115-110	Screw-HH	1
12	98-5605	Pulley	1	36	302-5	Fitting-Grease	1
13	3245-31	Screw-Set	2	37	33093-00	Washer-Flat	1
14	98-5798	Mount-Clutch	1	38	98-5824	Bushing	2
15	33096-00	Washer-Flat	6	40	33115-100	Screw-HH	1
16	324-2	Screw	2	41	100-0029	Eye Bolt	1
17	60-6770	Nut-Hex	2	42	98-5825	Spring-Tension	1
18	98-5802	Washer	1	43	100-0033	Tension Arm	1
19	98-5308	Clutch-Electromagnetic	1	44	100-0004	V-Belt, Poly	1
20	100-0034	Spacer	1	45	99-3337	V-Belt	1



T-0267-1

Clutch Assembly No. 98-5308

Ref. No.	Part No.	Description	No. Used	Ref. No.	Part No.	Description	No. Used
1	44-8350	Field Assembly (Incl. Ref. #2 & 3)	1	5	98-5333	Armature & Pulley Assembly (Incl. Ref. #3 & 6-8)	1
2	251-292	Bearing-Field	1	6	44-8330	Spacer-Bearing	1
3	44-8310	Ring-Retaining	2	7	98-5334	Collar-Bearing	1
4	44-8360	Field Coil, Rotor & Bearing (Incl. Ref. #1)	1	8	251-291	Bearing-Pulley	1
				9	3296-6	Nut-Lock	3
				10	44-8320	Spring	3



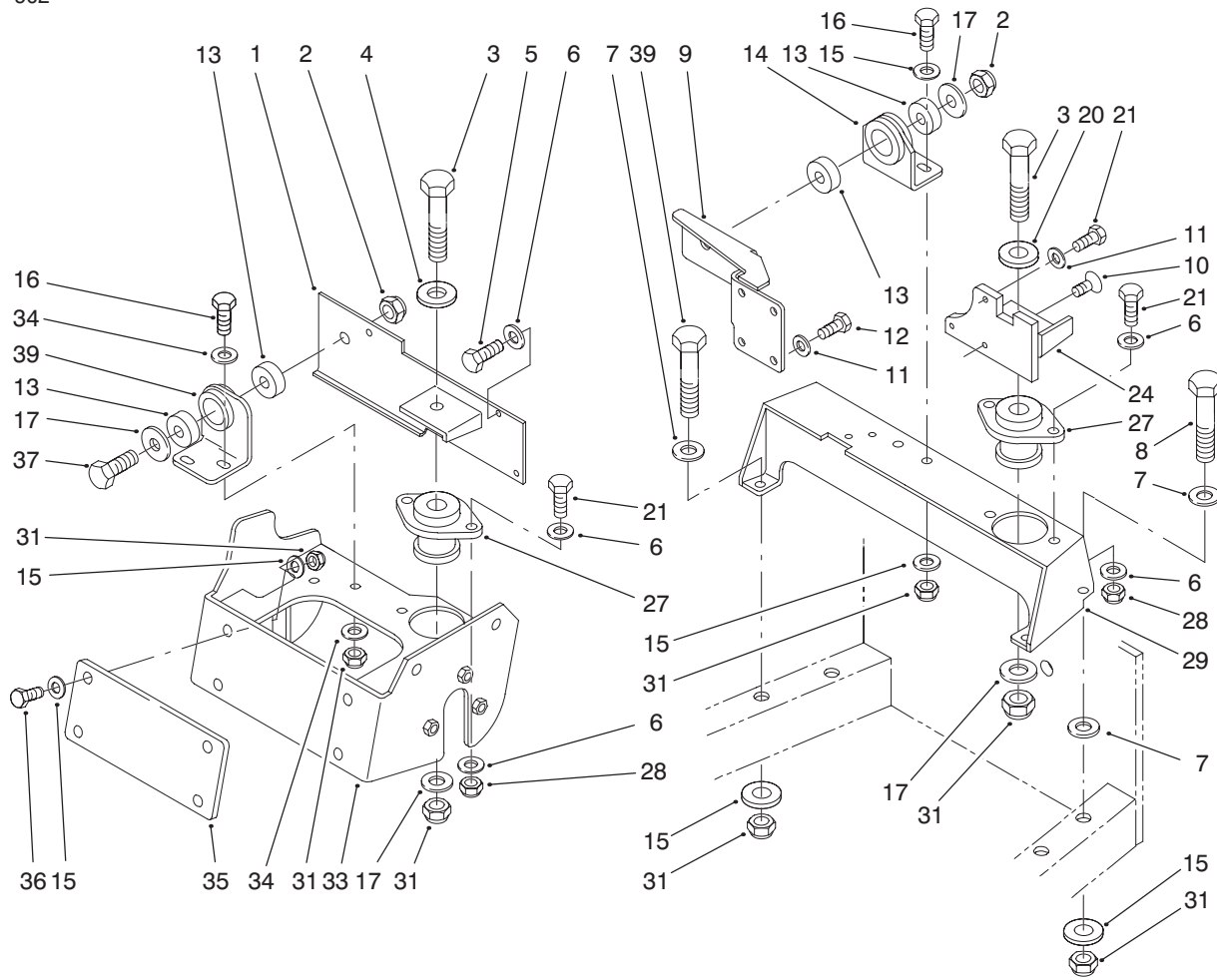
T-3272

Radiator Shroud and Cooling System

Ref. No.	Part No.	Description	No. Used
1	95-4191	Cap-Coolant	1
2	95-4017	Bottle-Overflow	1
3	33093-00	Washer-Flat	9
4	33113-020	Screw-HH	4
5	322-2	Screw-HH	4
6	3253-4	Washer-Lock	4
7	3256-23	Washer-Flat	4
8	100-0043	Mount-Front	1
9	100-0044	Shroud	1
10	33023-00	Nut-Lock	6
11	94-7640	Radiator-Diesel	1
12	100-0046	Mount-Rear	1
13	95-4227	Hose-Overflow	1
14	353-783	Fitting-Fuel	2
15	33113-030	Screw-HH	2
16	99-3340	Tube-Air Cleaner	1
17	2412-92	Clamp-Hose	3
18	99-3339	Hose-Inlet	1
19	3256-22	Washer-Flat	2
20	3253-3	Washer-Lock	2
21	321-3	Screw-HH	2
22	100-0045	Mount-Bottle Overflow	1
23	43-5930	Washer-Lock, Spring	2
24	33113-016	Screw-HH	2
25	63-8280	Head Assembly	1
26	63-8290	Vent-Air	1

Ref. No.	Part No.	Description	No. Used
27	63-8300	Spin-On Element	1
28	63-8310	Valve-Drain	1
29	62-2470	Hose-Fuel Line	1
30	2412-108	Clamp-Hose	2
31	2412-53	Clamp-Hose	1
32	93-2190	Air Cleaner Assembly (Incl. Ref. #33-36)	1
33	285-17	Plug	1
34	94-1414	Valve	1
35	94-3652	Cover Assembly	1
*36	93-2195	Element-Air Cleaner	1
37	95-5806	Band-Mounting	1
38	33024-00	Nut-Lock NI	2
39	33094-00	Washer-Flat	4
40	33114-030	Screw-HH	2
41	2412-34	Clamp-Hose	4
42	95-4266	Hose-Radiator	1
43	95-4267	Hose-Radiator	1
44	95-4142	Valve-Drain	2
45	92-9510	Hose-Fuel	1
46	93-2042	Hose-Fuel	1
47	100-0085	Deflector-Air	1
*	63-7650	Filter-Fuel (Incl. Ref. #25-28)	1

* Not Illustrated

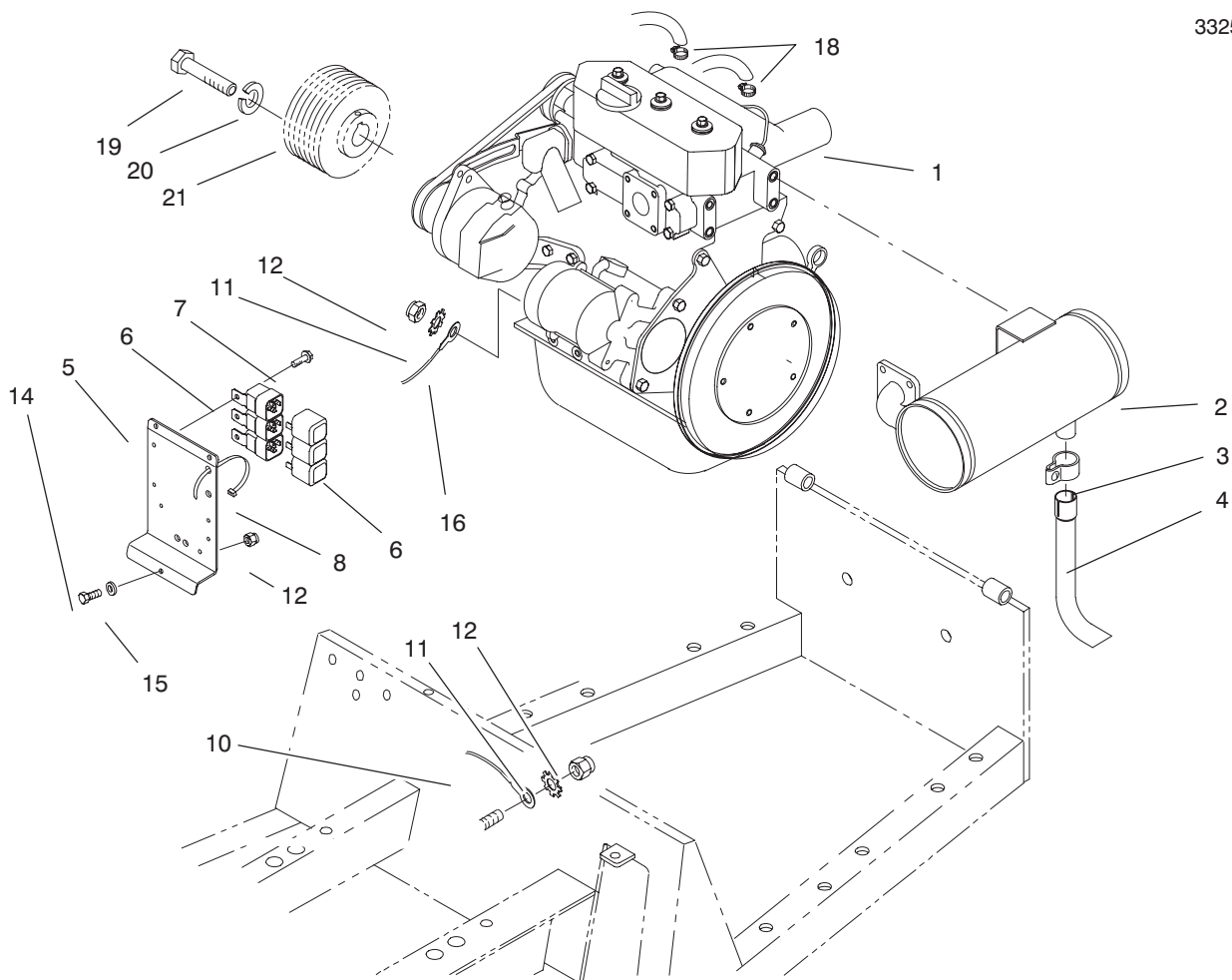


T-3271

Engine Mount Assembly

Ref. No.	Part No.	Description	No. Used
1	100-0035	Mount-Engine, Front	1
2	3296-23	Nut-Lock	2
3	33115-070	Screw-HH	2
4	33096-00	Washer-Flat	1
5	33114-020	Screw-HH	4
6	33094-00	Washer-Flat	12
7	31-3220	Washer	6
8	33115-100	Screw-HH	2
9	100-0036	Rear Mount Assembly	1
11	68-9420	Washer-Spring Lock	4
12	33114-020	Screw-HH	4
13	87-4970	Mount-Resilent	4
14	100-0037	Mount-Engine, Rear	1
15	33095-00	Washer-Flat	14
16	33115-025	Screw-HH	4

Ref. No.	Part No.	Description	No. Used
17	100-0038	Washer	4
20	33096-00	Washer	1
21	33114-025	Screw-HH	5
24	100-0039	Mount-Rear, LH	1
27	53-9680	Mount-Resilent	2
28	33024-00	Nut-Lock	4
29	100-0040	Mount-Engine, Rear	1
31	33025-00	Nut-Lock	11
33	100-0041	Mount-Engine, Front	1
34	33096-00	Washer	4
35	100-0048	Plate	1
36	33115-030	Screw-HH	4
37	325-12	Screw-HH	1
38	100-0042	Mount-Engine, Front	1
39	33115-080	Screw-HH	2

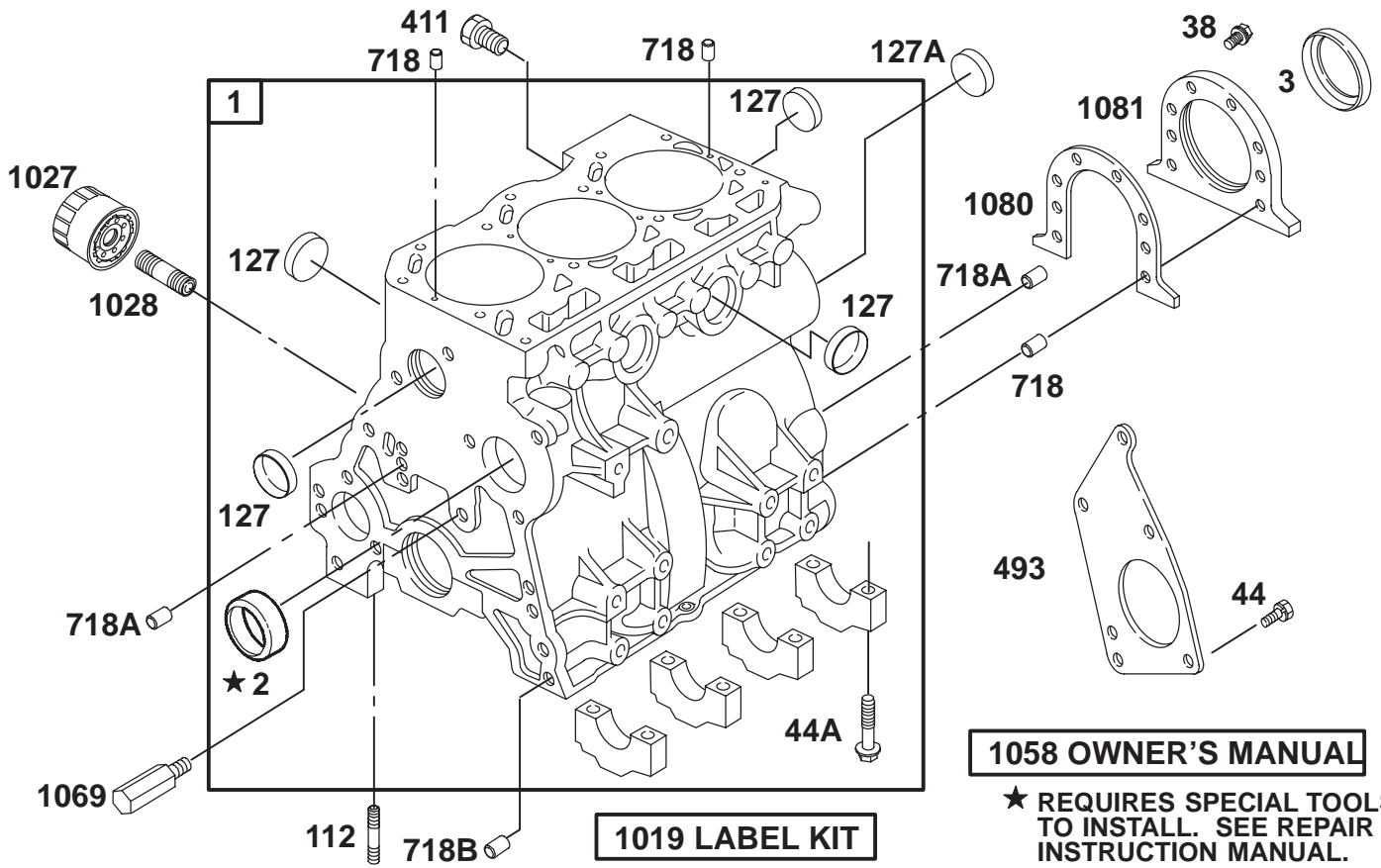


T-3313

Engine and Exhaust Assembly

Ref. No.	Part No.	Description	No. Used
1	100-0012	Engine	1
2	99-3336	Muffler-Exhaust	1
3	100-0003	Clamp-Muffler	1
4	100-0002	Pipe-Exhaust	1
5	100-0008	Mount-Electric	1
6	98-7249	Relay-S.P.D.T.	3
7	45-0710	Screw	6
8	3290-378	Tie-Cable	2
10	100-0052	Wire-Ground	1

Ref. No.	Part No.	Description	No. Used
11	3255-7	Washer-Lock, Ext. Tooth	2
12	33023-00	Nut-Lock	5
14	33113-020	Screw	3
15	3256-78	Washer	3
16	100-0010	Wire	1
18	2412-108	Clamp-Hose	2
19	33114-045	Screw-HH	4
20	68-9420	Washer-Lock	4
21	100-8158	Pulley-Engine	1



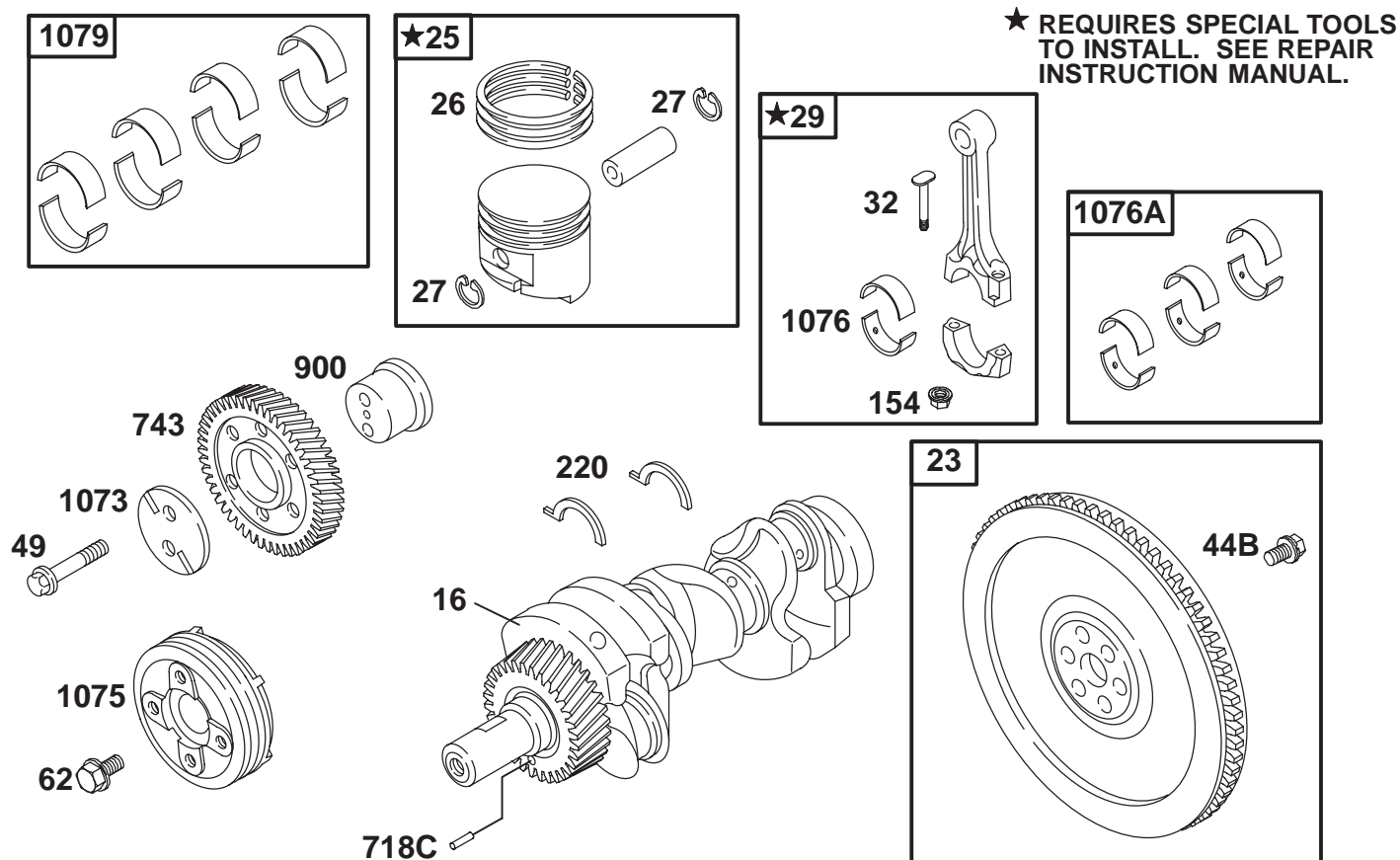
Assemblies include all parts shown in frames.

Cylinder Assembly

Ref. No.	Part No.	Description	No. Used
1	99-9266	Cylinder Assembly	1
2	99-9002	Bushing	1
*3	99-9003	Seal-Oil	1
38	99-9004	Screw-Hex.	6
44	99-9005	Screw-Hex.	3
44A	99-9006	Screw-Hex.	8
112	99-9007	Stud-Standard	1
127	99-9008	Plug-Welch	7
127A	99-9010	Plug-Welch (Camshaft)	1
411	99-9601	Plug (Cylinder Block)	1
493	99-9011	Bracket-Mounting	11

Ref. No.	Part No.	Description	No. Used
718	99-9012	Pin-Locating	4
718A	99-9013	Pin-Locating	3
718B	99-9014	Pin-Locating	2
1019	99-9015	Label Kit (Identification Labels)	1
1027	99-9017	Filter-Oil	1
1028	99-9018	Adapter-Oil Filter	1
1058	99-9602	Owner's Manual	1
1069	99-9020	Nozzle-Oil	1
*1080	99-9021	Gasket-Retainer	1
1081	99-9022	Retainer-Seal	1

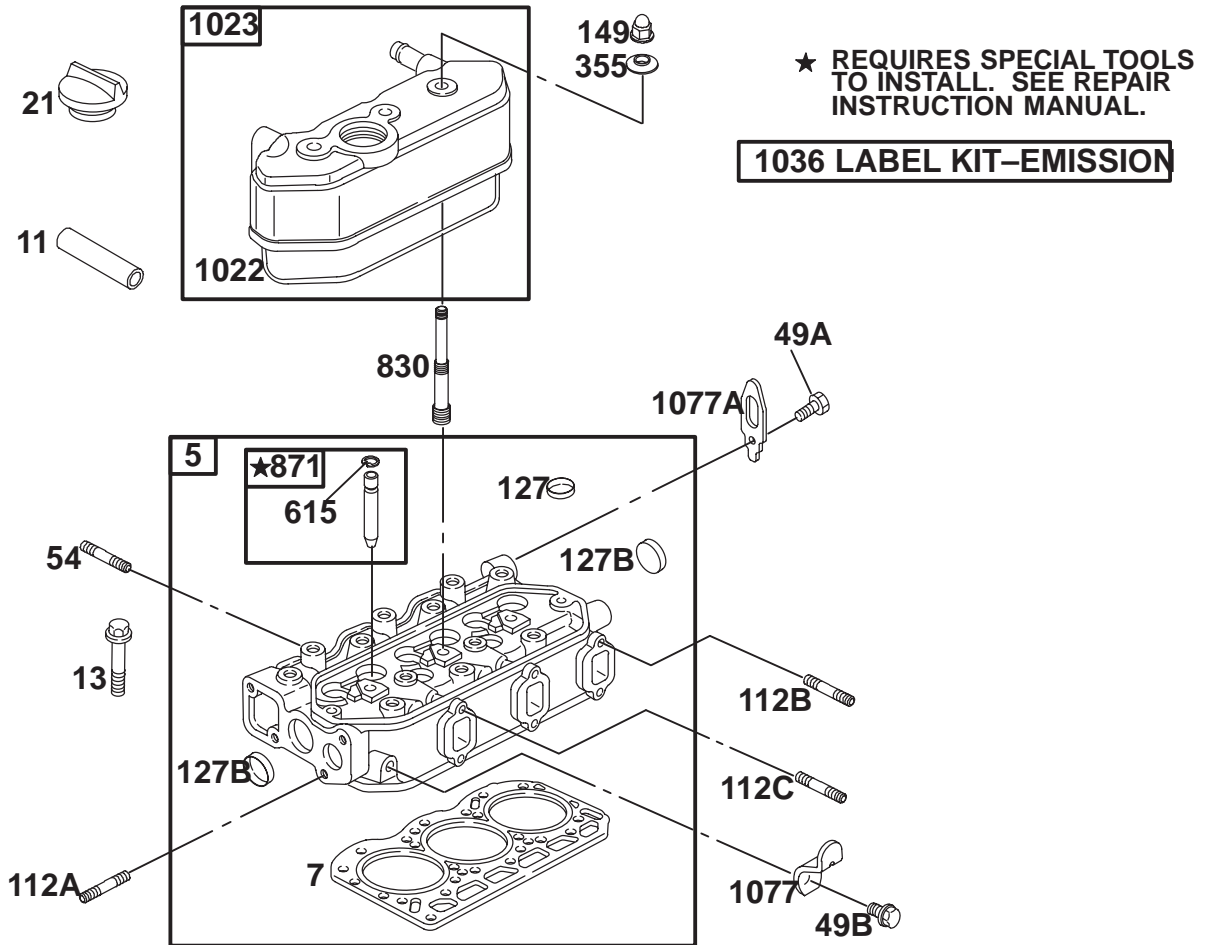
* Included in Gasket Set-Part No. 99-9667



Assemblies include all parts shown in frames.

Crankshaft Assembly

Ref. No.	Part No.	Description	No. Used	Ref. No.	Part No.	Description	No. Used
16	99-9252	Crankshaft	1	718C	99-9037	Pin-Locating	1
23	99-9267	Crankshaft	1	743	99-9609	Gear-Drive	1
25	99-9605	Piston Assembly (Standard)	3	900	99-9039	Shaft-Gear	1
	99-9268	Piston Assy. (.010" Oversize)	3	1073	99-9040	Plate-Idler Gear	1
26	99-9606	Ring Set (Standard)	3	1075	99-9692	Pulley-Crankshaft	1
	99-9269	Ring Set (.010" Oversize)	3	1076	99-9042	Bearing-Rod (Standard)	3
27	99-9607	Lock-Piston Pin	6	1076A	99-9043	Bearing Set-Rod (Standard) (Includes 3 Bearings)	1
29	99-9608	Rod-Connecting	3		99-9044	Bearing Set-Rod (.010" Undersize) (Includes 3 Bearings)	1
32	99-9030	Screw-Con. Rod	6	1079	99-9045	Bearing Set-Main (Standard)	1
44B	99-9031	Screw-Hex.	6		99-9046	Bearing Set-Main (.010" Undersize)	1
49	99-9032	Screw-Hex.	2				
62	99-9033	Screw-Hex.	1				
154	99-9034	Nut-Hex.	6				
220	99-9035	Washer-Thrust (Standard)	1				
	99-9036	Washer-Thrust (.005" Oversize)	1				



Assemblies include all parts shown in frames.

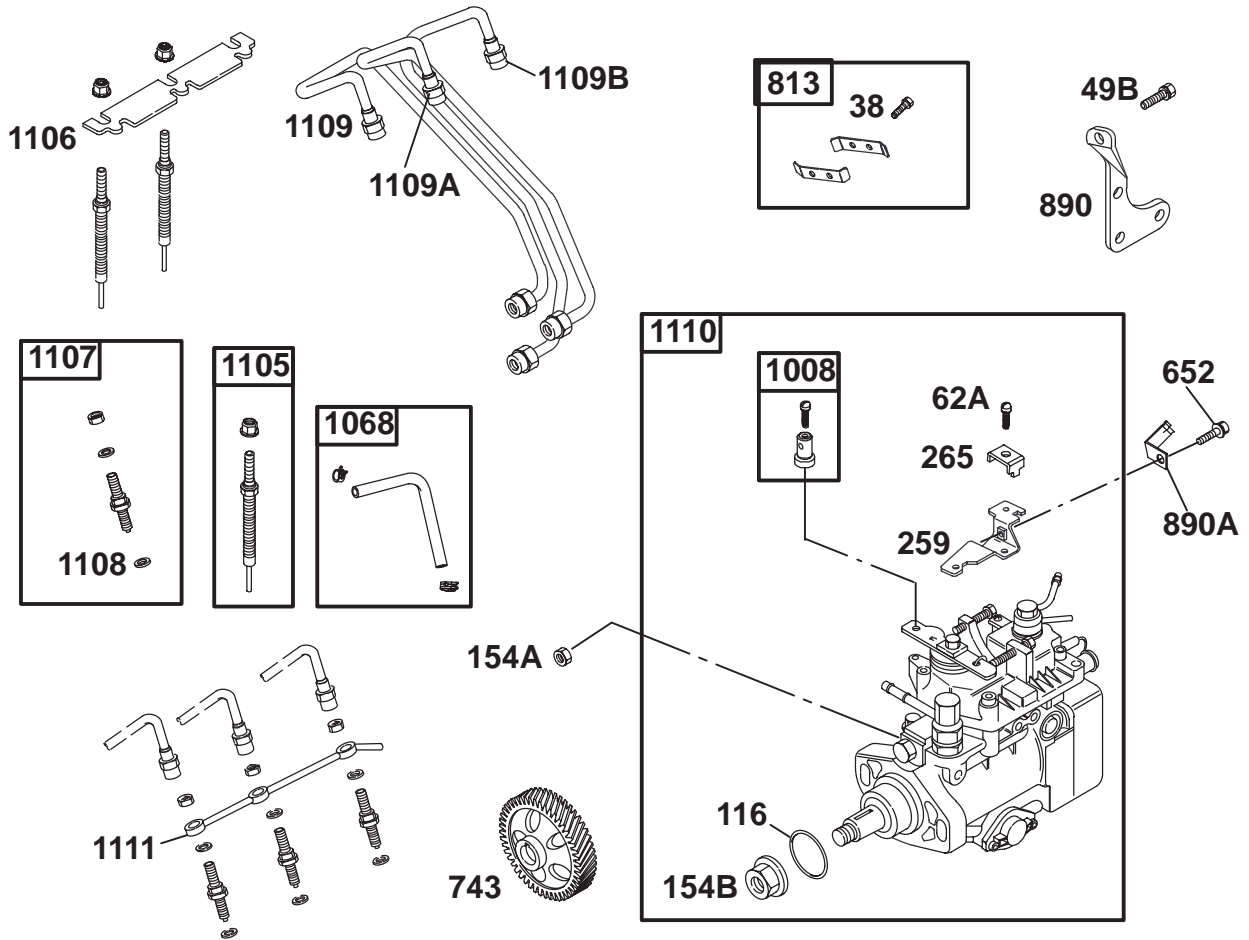
Cylinder Head Assembly

Ref. No.	Part No.	Description	No. Used
5	99-9611	Head-Cylinder	1
*†7	99-9612	Gasket-Cylinder Head	1
11	99-9613	Tube-Breather	1
13	99-9614	Screw-Hex.	14
21	99-9052	Cap-Oil Fill	1
49A	99-9054	Screw-Hex.	1
49B	99-9270	Screw-Hex.	1
54	99-9055	Stud-Intake Manifold	2
112A	99-9057	Stud-Std.	2
112B	99-9058	Stud-Std.	5
112C	99-9059	Stud-Std.	1
127	99-9008	Plug-Welch	2

Ref. No.	Part No.	Description	No. Used
127B	99-9060	Plug-Welch	2
149	99-9061	Nut-Hex.	3
*†355	99-9063	Washer-Seal	3
615	99-9067	Retainer	6
830	99-9101	Stud-Rocker Arm	3
871	99-9070	Bushing-Guide	6
*†1022	99-9073	Gasket-Rocker Cover	1
1023	99-9074	Cover-Rocker	1
1036	99-9615	Label Kit-Emission	1
1077	99-9076	Bracket-Lifting	1
1077A	99-9077	Bracket-Lifting	1

* Included in Gasket Set-Part No. 99-9667

† Included in Valve Overhaul Kit-Part No. 99-9668

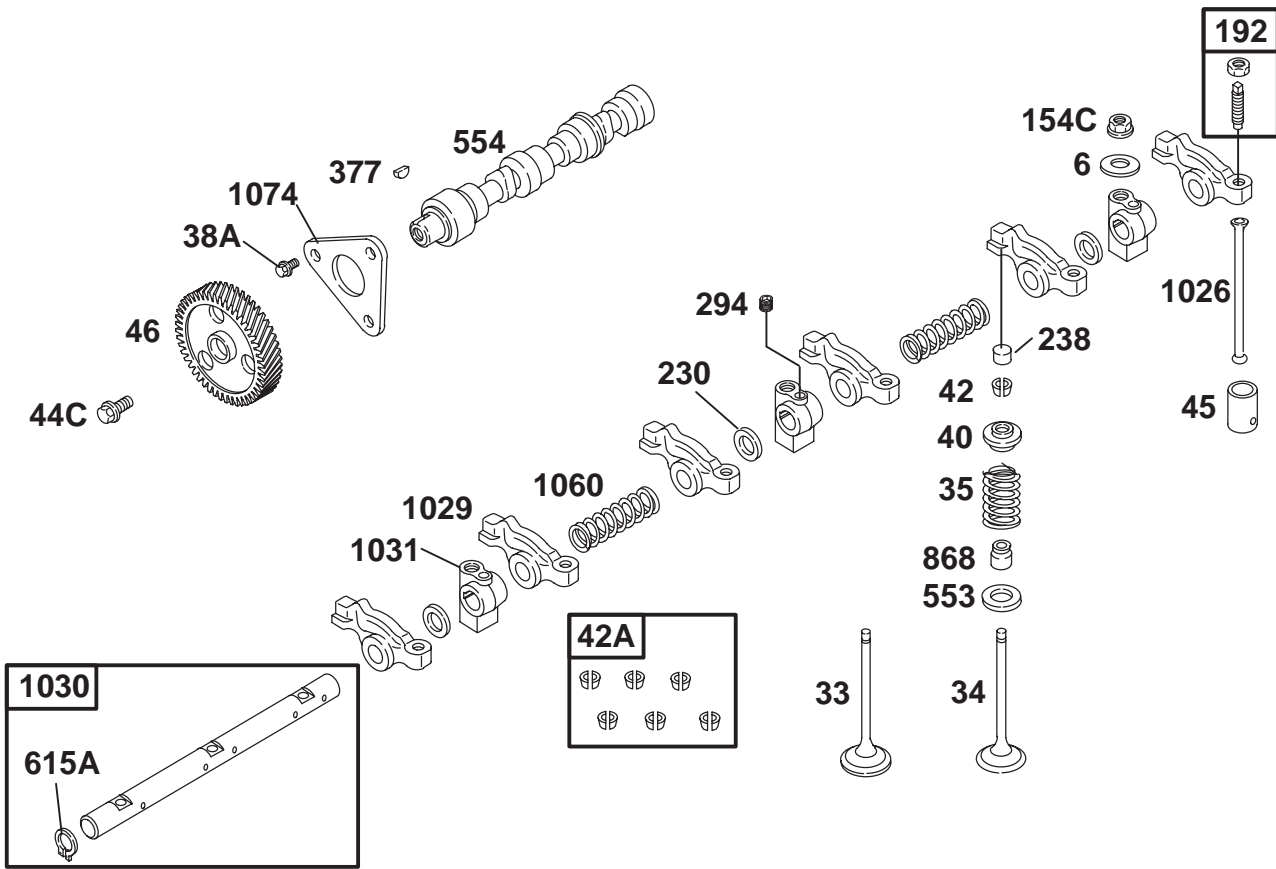


Assemblies include all parts shown in frames.

Injection Pump Assembly

Ref. No.	Part No.	Description	No. Used
38	99-9004	Screw-Hex.	2
49B	99-9616	Screw-Hex.	4
62A	99-9617	Screw-Metric	1
116	99-9618	Seal-O-Ring	1
154A	99-9619	Nut-Hex.	2
154B	99-9620	Nut-Hex.	1
259	99-9621	Bracket-Casing Clamp	1
265	99-9622	Clamp-Casing	1
652	99-9623	Screw-Hex. (Support Bracket)	1
743	99-9624	Gear-Drive	1
813	99-9625	Clamp	1
890	99-9626	Bracket-Support	1

Ref. No.	Part No.	Description	No. Used
1008	99-9628	Clamp-Swivel	1
1068	99-9629	Hose/Clamp Assy. (Fuel Return)	1
1105	99-9630	Plug-Glow	3
1106	99-9631	Strap-Glow Plug	1
1107	99-9632	Nozzle-Injector	3
1108	99-9633	Seat-Injector	3
1109	99-9690	Pipe-Injector #1	1
1109A	99-9634	Pipe-Injector #2	1
1109B	99-9635	Pipe-Injector #3	1
1110	99-9636	Pump-Injection	1
1111	99-9637	Pipe-Fuel Return	1



Assemblies include all parts shown in frames.

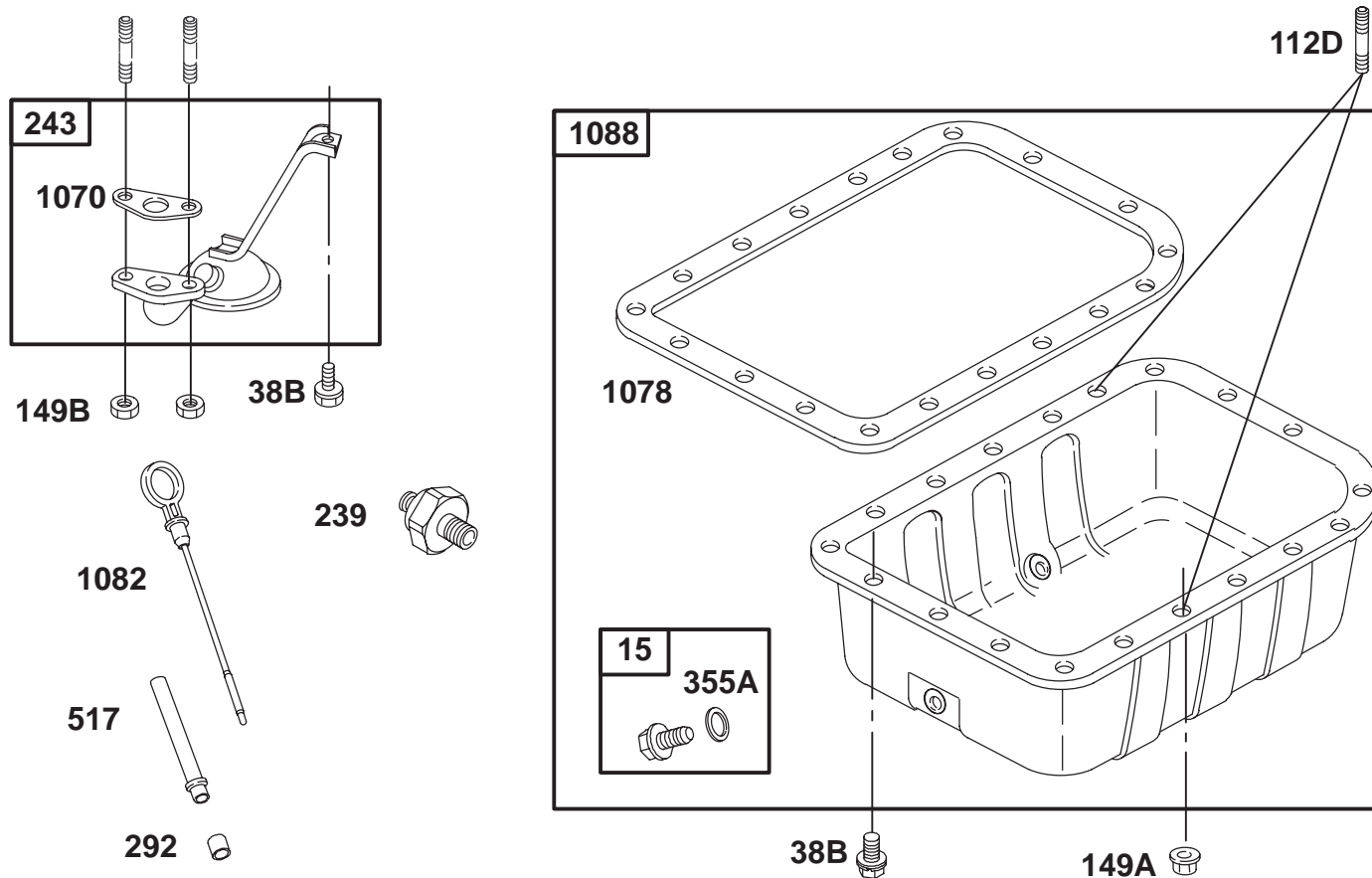
Rocker Arm Assembly

Ref. No.	Part No.	Description	No. Used
6	99-9079	Washer-Flat	3
33	99-9638	Valve-Exhaust	3
34	99-9639	Valve-Intake	3
35	99-9640	Spring-Valve	6
38A	99-9083	Screw-Hex.	3
40	99-9084	Retainer-Valve	6
42	99-9086	Keeper-Valve (Contains 1 Set of 6 Req.)	1
42A	99-9087	Keeper-Valve (Contains 6 Sets)	1
44C	99-9085	Screw-Hex.	1
45	99-9088	Tappet-Valve	6
46	99-9641	Gear-Cam	1
154C	99-9091	Nut-Hex.	3
192	99-9092	Screw-Valve Adjusting	6

Ref. No.	Part No.	Description	No. Used
230	99-9093	Washer-Spacer	3
238	99-9094	Cap-Valve	6
294	99-9090	Screw-Socket	1
377	99-9642	Key-Timing	1
553	99-9096	Seat-Valve Spring	6
554	99-9097	Shaft-Cam	1
615A	99-9099	Retainer	2
*†868	99-9643	Seal-Valve	6
1026	99-9103	Rod-Push	6
1029	99-9104	Arm-Rocker	1
1030	99-9106	Shaft-Rocker Arm	1
1031	99-9107	Support-Rocker Arm	3
1060	99-9108	Spring-Rocker Shaft	2
1074	99-9109	Retainer-Camshaft	1

* Included in Gasket Set-Part No. 99-9667

† Included in Valve Overhaul Kit-Part No. 99-9668

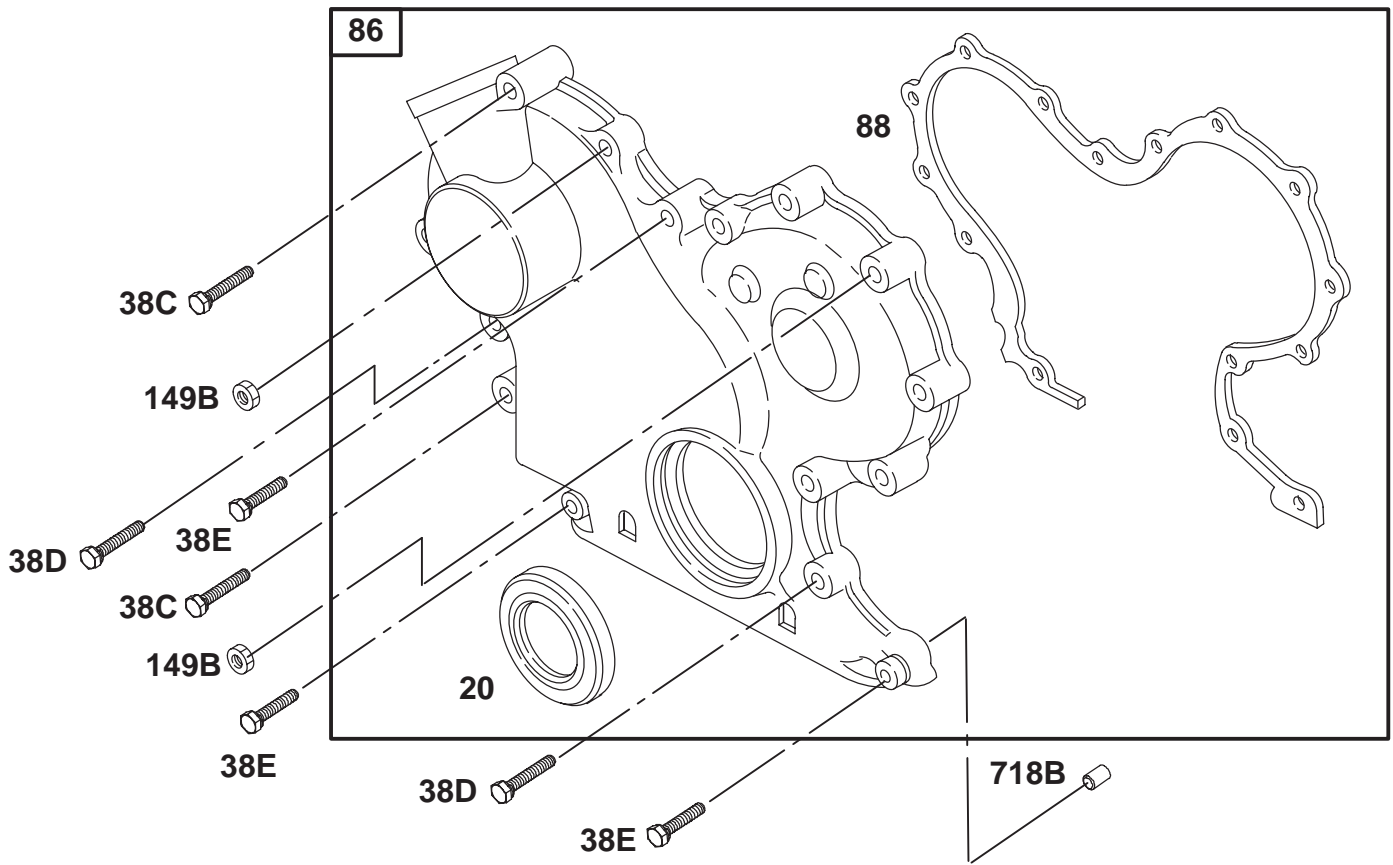


Assemblies include all parts shown in frames.

Oil Pan Assembly

Ref. No.	Part No.	Description	No. Used	Ref. No.	Part No.	Description	No. Used
15	99-9644	Plug-Oil Drain	1	243	99-9116	Screen-Oil Pump	1
38B	99-9111	Screw-Hex. (Req. 17 For Oil Pan) (Req. 1 For Screen-Oil Pump)	1	292	99-9271	Dipstick Tube Collar	1
112D	99-9112	Stud-Std.	2	*355A	99-9645	Washer-Seal	1
149A	99-9113	Nut-Hex.	2	517	99-9118	Tube-Dipstick	1
149B	99-9114	Nut-Hex.	2	*1070	99-9120	Gasket-Oil Strainer	1
239	99-9115	Switch-Oil Pressure	1	*1078	99-9121	Gasket-Oil Pan	1
				1082	99-9272	Dipstick	1
				1088	99-9649	Pan-Oil	1

* Included in Gasket Set-Part No. 99-9667



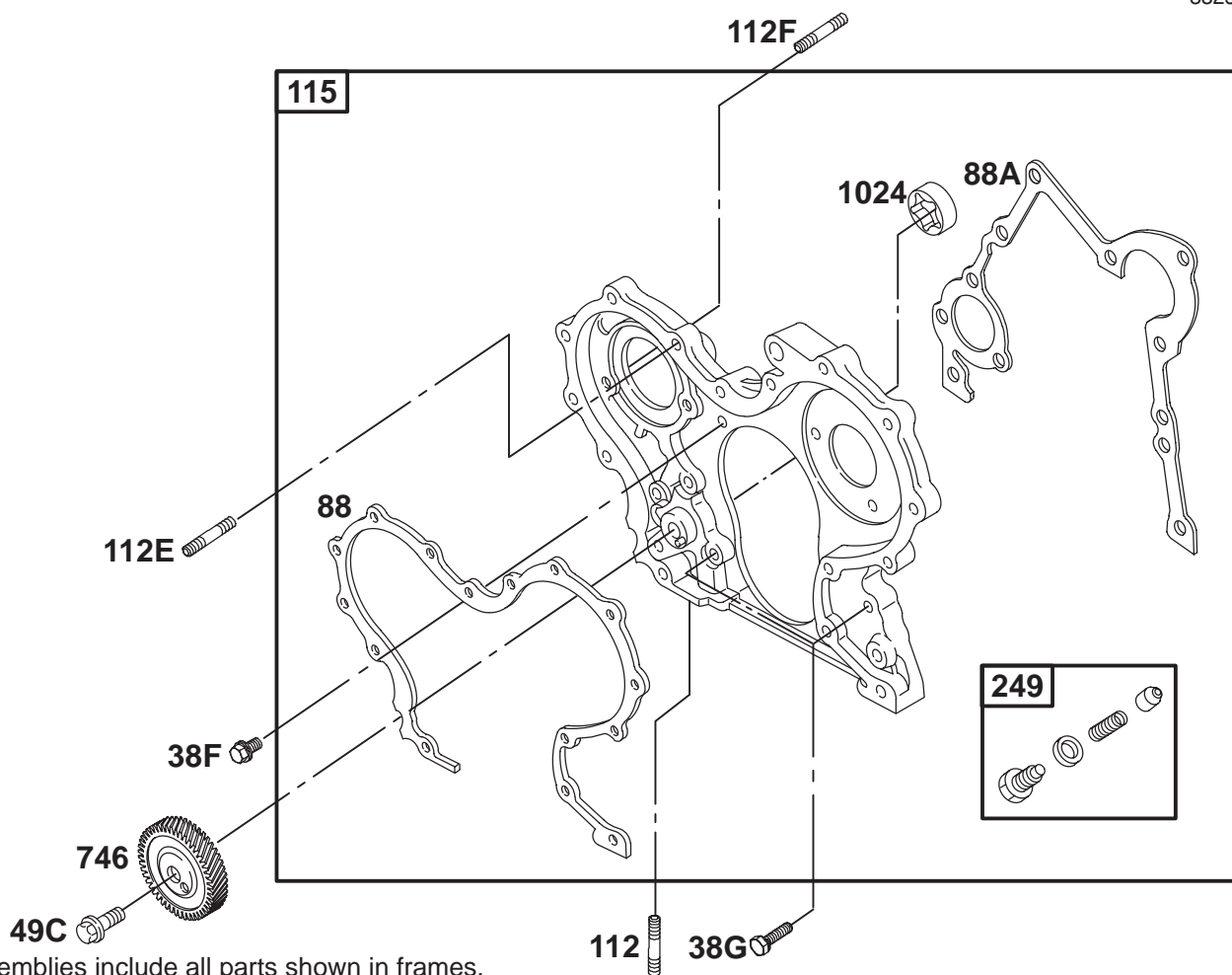
Assemblies include all parts shown in frames.

Gear Cover Assembly

Ref. No.	Part No.	Description	No. Used
*20	99-9126	Seal-Oil	1
38C	99-9651	Screw-Hex.	2
38D	99-9128	Screw-Hex.	9
38E	99-9129	Screw-Hex.	3

Ref. No.	Part No.	Description	No. Used
86	99-9652	Cover Assy.-Gear	1
*88	99-9653	Gasket-Cover	1
149B	99-9114	Nut-Hex.	2
718B	99-9014	Pin-Locating	2

* Included in Gasket Set-Part No. 99-9667

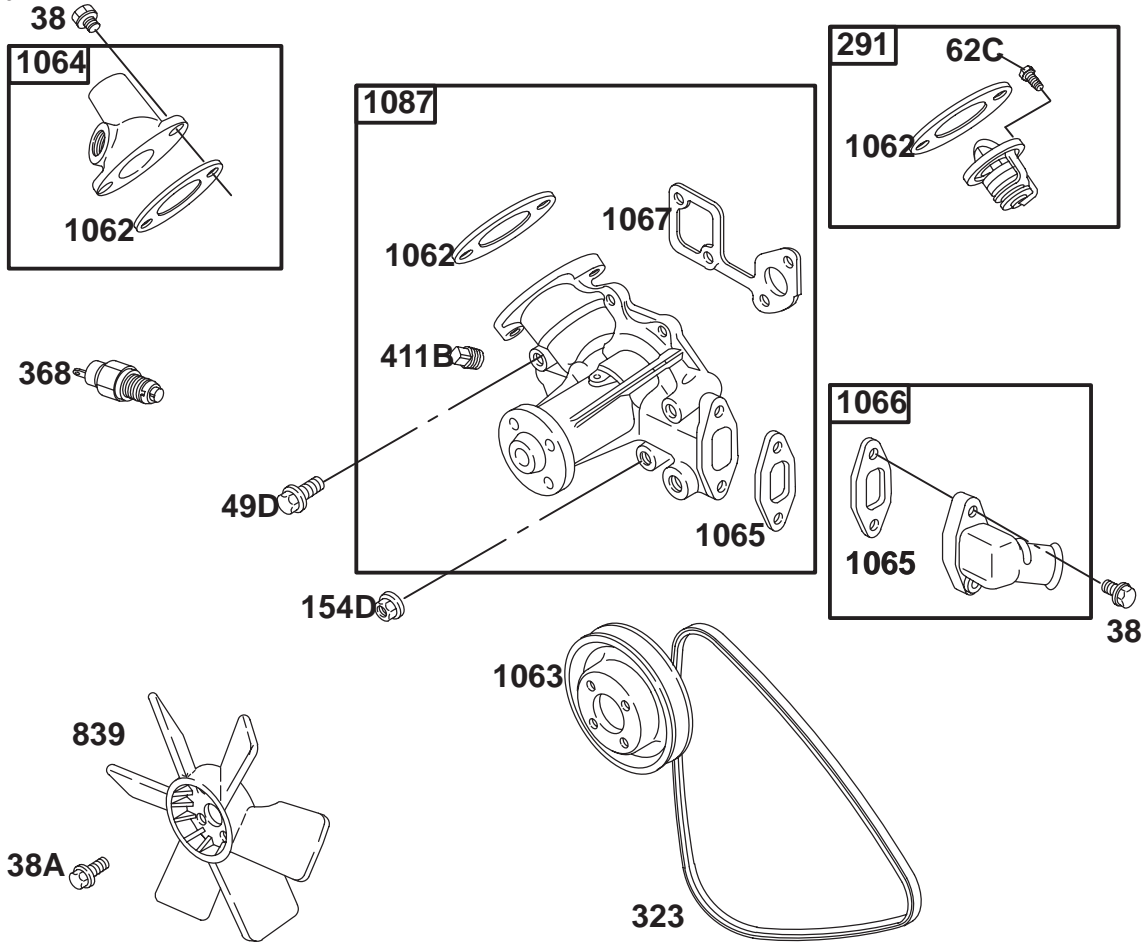


Assemblies include all parts shown in frames.

Gear Housing Assembly

Ref. No.	Part No.	Description	No. Used	Ref. No.	Part No.	Description	No. Used
38F	99-9134	Screw-Hex.	1	112F	99-9654	Stud-Std.	2
38G	99-9133	Screw-Hex.	4	115	99-9655	Housing-Gear	1
49C	99-9135	Screw-Hex.	1	249	99-9142	Valve-Oil Relief	1
*88	99-9653	Gasket-Cover	1	746	99-9656	Gear-Drive	1
*88A	99-9136	Gasket-Cover	1	1024		Pump-Oil	
112	99-9007	Stud-Std.	1			(Sold in Gear Hsg. Only, Ref 115)	1
112E	99-9137	Stud-Std.	2				

* Included in Gasket Set-Part No. 99-9667



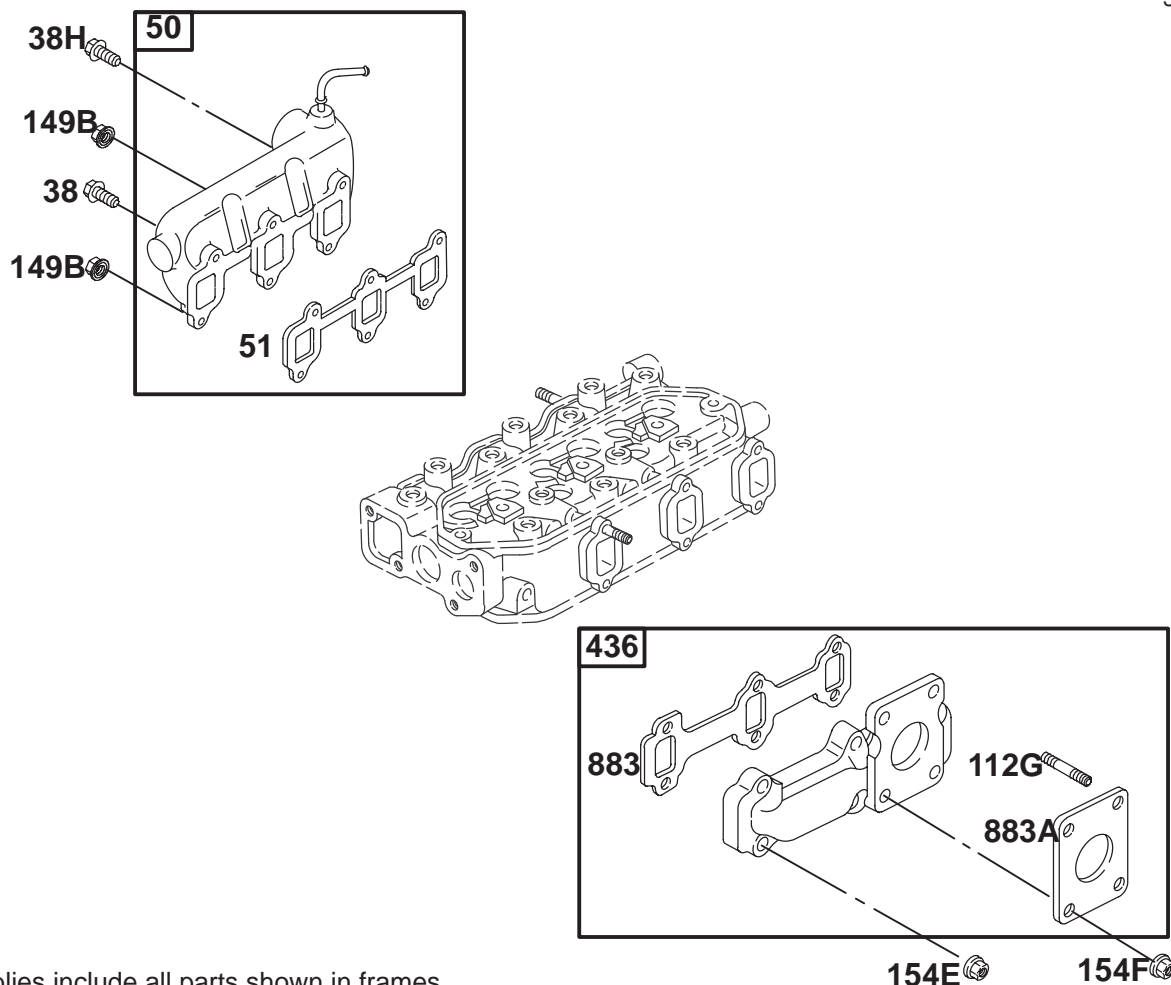
Assemblies include all parts shown in frames.

Water Pump Assembly

Ref. No.	Part No.	Description	No. Used
38	99-9004	Screw-Hex. (Req. 2 For Outlet Hsg.) (Req. 2 For Inlet Hsg.)	1
38A	99-9111	Screw-Hex.	4
49D	99-9151	Screw-Hex.	2
62C	99-9152	Screw-Hex.	1
154D	99-9153	Nut-Hex.	1
291	99-9155	Thermostat	1
323	99-9156	Belt-Vee	1
368	99-9157	Switch-Water Temp. (For Light)	1

Ref. No.	Part No.	Description	No. Used
411B	99-9159	Plug	1
839	99-9657	Fan-Radiator (290 MM. Dia.)	1
*1062	99-9163	Gasket-Outlet	1
1063	99-9164	Pulley-Pump	1
1064	99-9658	Housing-Outlet	1
*1065	99-9166	Gasket-Inlet Hsg.	1
1066	99-9167	Housing-Inlet	1
*1067	99-9168	Gasket-Water Pump	1
1087	99-9659	Pump-Water	1

* Included in Gasket Set-Part No. 99-9667



Assemblies include all parts shown in frames.

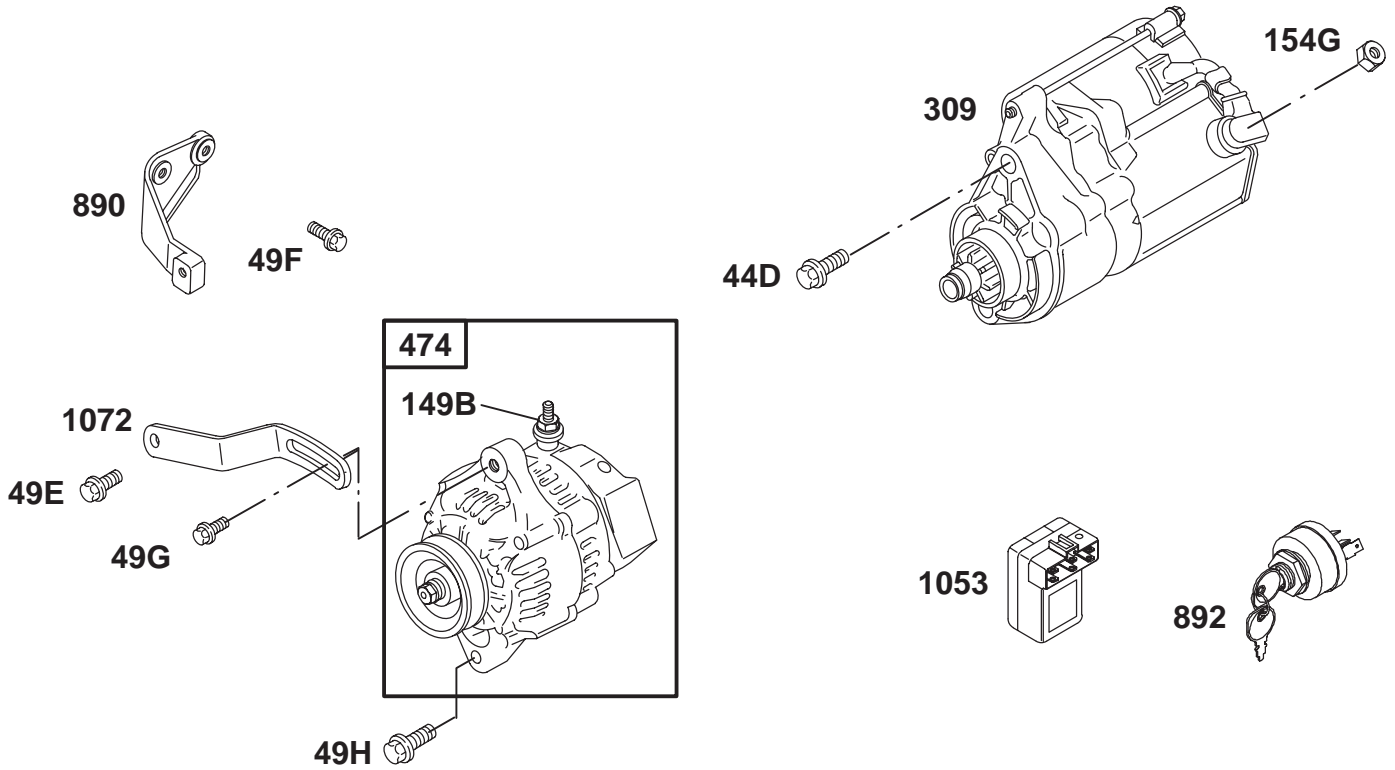
Manifold Assembly

Ref. No.	Part No.	Description	No. Used
38	99-9004	Screw-Hex.	1
38H	99-9660	Screw-Hex.	3
50	99-9661	Manifold-Intake	1
*†51	99-9662	Gasket-Intake	1
112G	99-9174	Stud-Std.	4
149B	99-9114	Nut-Hex.	2

Ref. No.	Part No.	Description	No. Used
154E	99-9175	Nut-Hex.	6
154F	99-9176	Nut-Hex.	4
436	99-9177	Manifold-Exhaust	1
*†883	99-9178	Gasket-Exhaust (Manifold)	1
*883A	99-9179	Gasket-Exhaust (Muffler)	1

* Included in Gasket Set-Part No. 99-9667

† Included in Valve Overhaul Kit-Part No. 99-9668

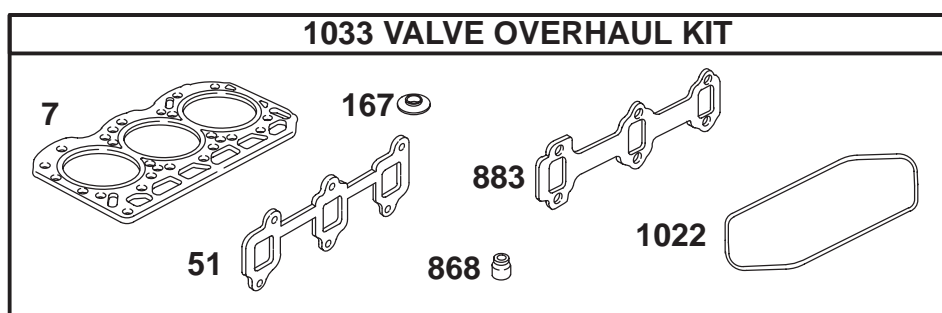
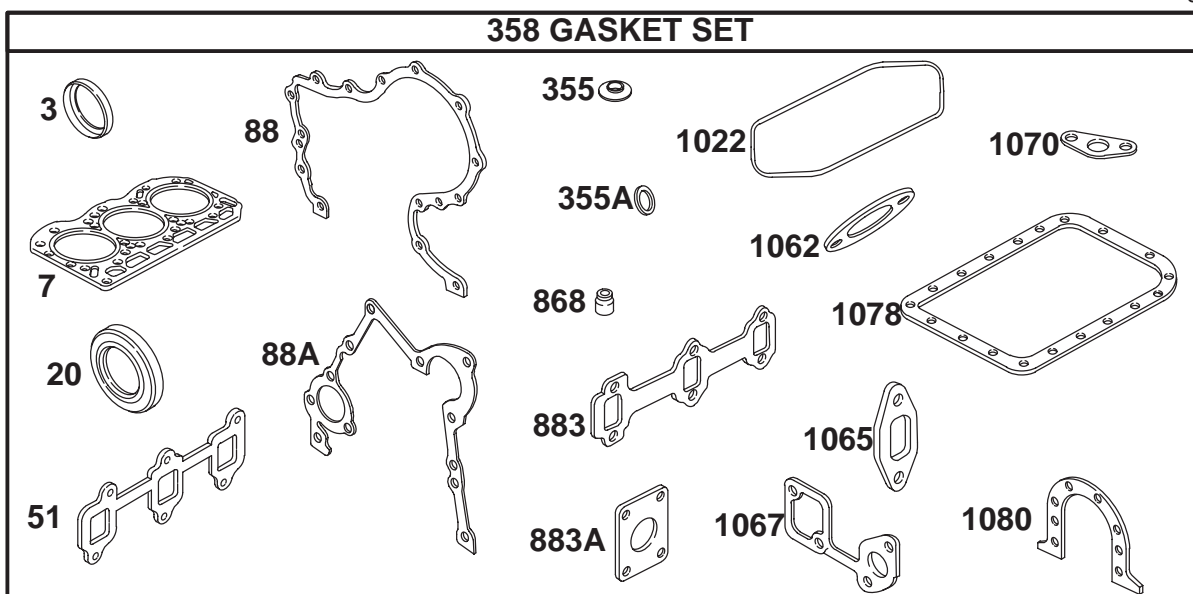


Assemblies include all parts shown in frames.

Alternator and Starter Motor Assembly

Ref. No.	Part No.	Description	No. Used
44D	99-9201	Screw-Hex.	2
49E	99-9202	Screw-Hex.	1
49F	99-9203	Screw-Hex.	2
49G	99-9663	Screw-Metric Hex.	1
49H	99-9205	Screw-Metric Hex.	1
149B	99-9114	Nut-Hex.	1

Ref. No.	Part No.	Description	No. Used
154G	99-9206	Nut-Hex.	1
309	99-9693	Motor-Starter (1.2 KW)	1
474	99-9209	Alternator (40 Amp.)	1
890	99-9211	Bracket-Support	1
1053	99-9666	Module (Pre-Heat Timer)	1
1072	99-9212	Bracket-Adjusting	1



Assemblies include all parts shown in frames.

Gasket and Overhaul Kit

Ref. No.	Part No.	Description	No. Used	Ref. No.	Part No.	Description	No. Used
3	99-9003	Seal—Oil	1	883	99-9178	Gasket—Exhaust	1
7	99-9612	Gasket—Cylinder Head	1	883A	99-9179	Gasket—Exhaust	1
20	99-9126	Seal—Oil	1	1022	99-9073	Gasket—Rocker Cover	1
51	99-9662	Gasket—Intake	1	1033	99-9668	Kit—Valve Overhaul	1
88	99-9653	Gasket—Cover	1	1062	99-9163	Gasket—Outlet	1
88A	99-9136	Gasket—Cover	1	1065	99-9166	Gasket—Inlet Hsg.	1
355	99-9063	Washer—Seal (Rocker Cover)	1	1067	99-9168	Gasket—Water Pump	1
355A	99-9645	Washer—Seal	1	1070	99-9120	Gasket—Oil Strainer	1
358	99-9667	Gasket Set	1	1078	99-9121	Gasket—Oil Pan	1
868	99-9643	Seal—Valve	1	1080	99-9021	Gasket—Retainer	1

PRODUCT CHANGES

In an effort to make improvements available to TORO owners as quickly as possible, minor changes are incorporated into Toro's products from time to time that do not become immediately shown in the Parts Catalog. If such a change has been made in your unit, which is not reflected in your manual, see your TORO Distributor or his Authorized TORO Service Dealer for information and part numbers.

IDENTIFICATION AND ORDERING

MODEL AND SERIAL NUMBERS

The Grounds Pro 2000D has two identification numbers; a model number and a serial number. The two numbers are stamped on a plate which is attached to the frame. In any correspondence concerning the Grounds Pro 2000D, supply model and serial numbers to assure that correct information and replacement parts are obtained.

To order replacement parts from an Authorized TORO Service Dealer, supply the following information:

1. Model and serial number of the Grounds Pro 2000D.
2. Part number, description, and the quantity of part(s) desired.

NOTE: Do not order by reference number if a parts catalog is being used; use the PART NUMBER.

TABLE OF CONTENTS

Description	Page	Description	Page
Hood & Frame Assembly	1	(Floating Cutting Unit Model 02101)	20
Control Panel, Footrest and Fenders	2	Center Suspension	
Steering Assembly	3	(Floating Cutting Unit Model 02101)	21
Traction Linkage	4	Front Lift (Floating Cutting Unit Model 02101)	22
Front Axle Assembly	5	Lift Cable & Pulleys	23
Axle Assembly No. 98-5327	6-7	Front Lift System	24
Transmission Assembly	8	Hydraulic Cylinder No. 98-5441	25
Hydrostatic Transmission Assembly		Center Lift (Fixed & Floating Cutting Units	
No. 98-0777	9-10	Models 02100 & 02101)	26
Controls Assembly	11	Seat Mounting Assembly	27
Battery Assembly	12	Rear Two Wheel Axle	28
Electrical Schematic	13	Counter Shaft Assembly	29-30
Lift Valve Assembly	14	Upper Shaft Assembly	31
Valve Assembly No. 43-1710-01	15	Traction Drive Assembly	32
Fuel Tank & Hydraulic Reservoir Assembly	16	Transmission Shaft Assembly	33
Front Suspension		Clutch Assembly No. 98-5308	34
(Fixed Cutting Unit Model 02100)	17	Radiator Shroud & Cooling System	35
Center Suspension		Engine Mount Assembly	36
(Fixed Cutting Unit Model 02100)	18	Engine & Exhaust Assembly	37
Front Lift (Fixed Cutting Unit Model 02100)	19	Engine Assembly	38-49
Front Suspension			

