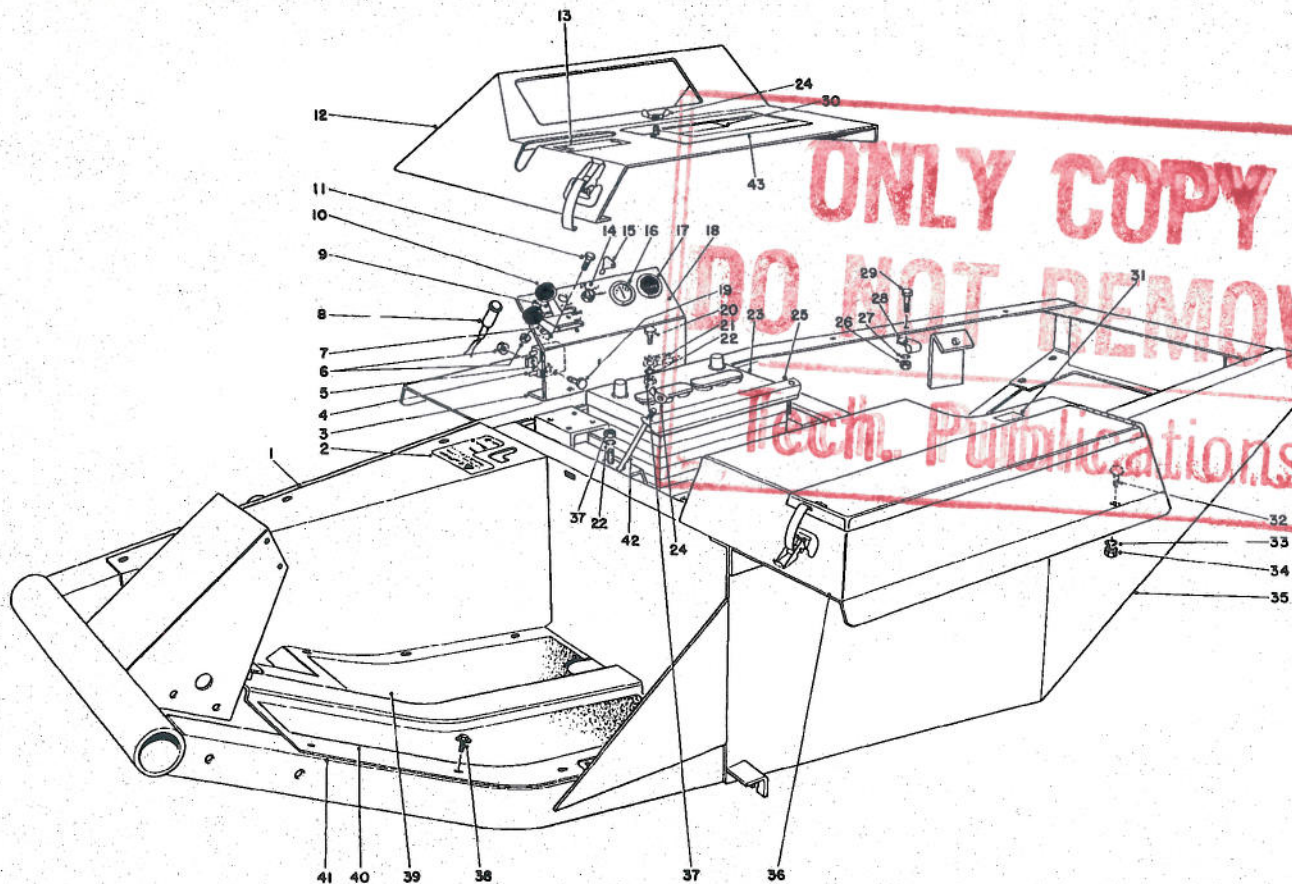


TORO

MODEL NO. 30774 — 50001 & UP
 MODEL NO. 30720 — 50001 & UP

PARTS CATALOG

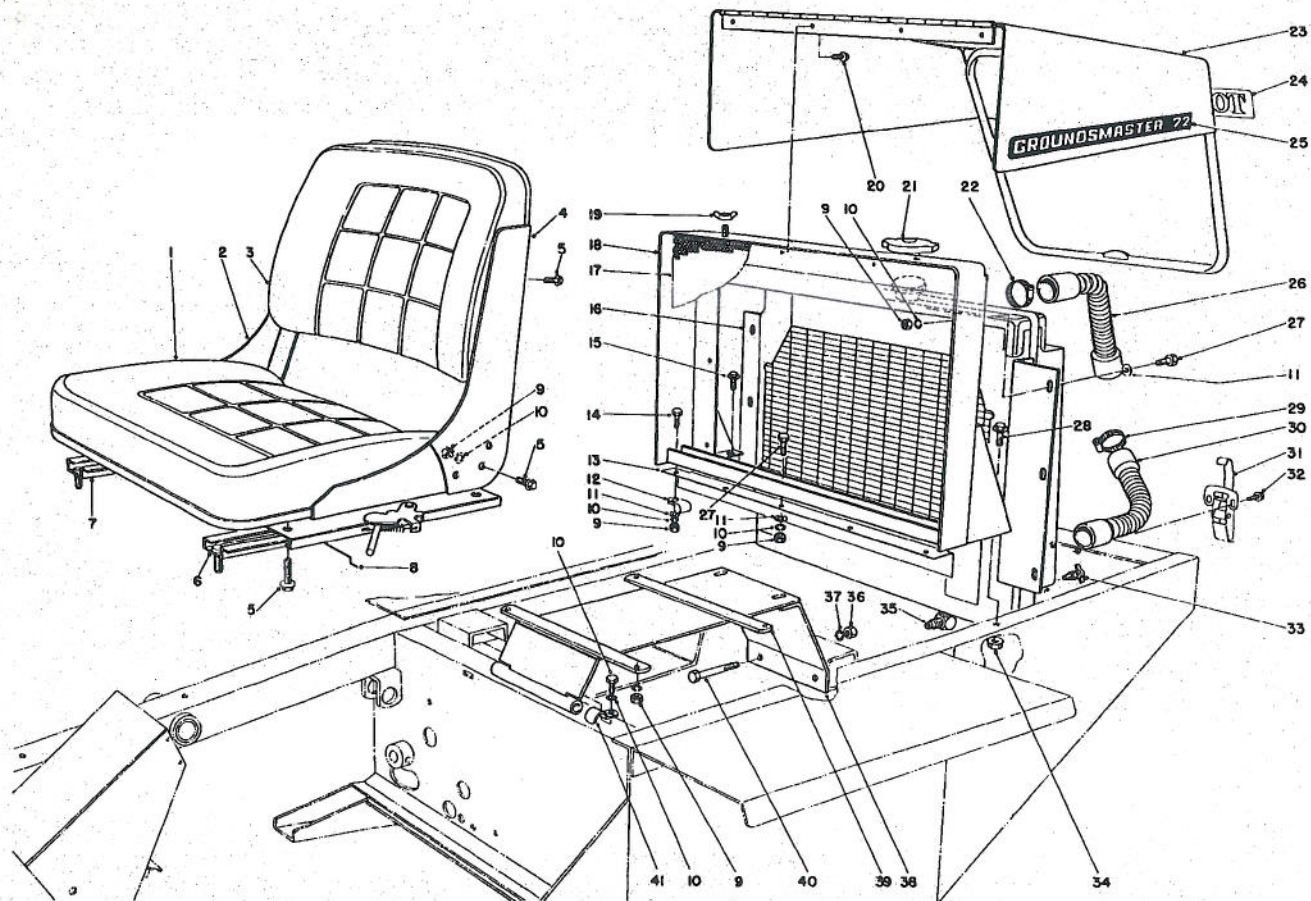
72" GROUNDMASTER



MAIN FRAME

Ref. No.	Part No.	Description	No. Used
1	21-2660	Foot Rest	1
2	21-3920	Decal-Caution	1
3	22-7830	Instrument Panel	1
4	22-7820	Buzzer Assembly	2
5	22-7810	Spacer	2
6	32128-17	Flange Locknut	6
7	21-2200	Throttle Control	1
8	21-9970	Warning Light	2
9	21-2210	Choke Control	1
10	233-35	Knob	2
11	3290-134	Hex. Hd. Machine Screw	4
12	24-5670	Instrument Cover	1
13	21-3950	Decal — Engage — Disengage	1
14	12-8140	Key Switch	1
15	218-412	Key	1
16	18-2190	Ammeter	1
17	12-9990	Hour Meter	1
18	21-2510	Decal — Instrument Panel	1
19	3290-360	Hex. Hd. Machine Screw	2
20	322-3	Capscrew	2
21	21-2370	Wire — Hour Meter Ground	1
22	3253-4	Lockwasher	4

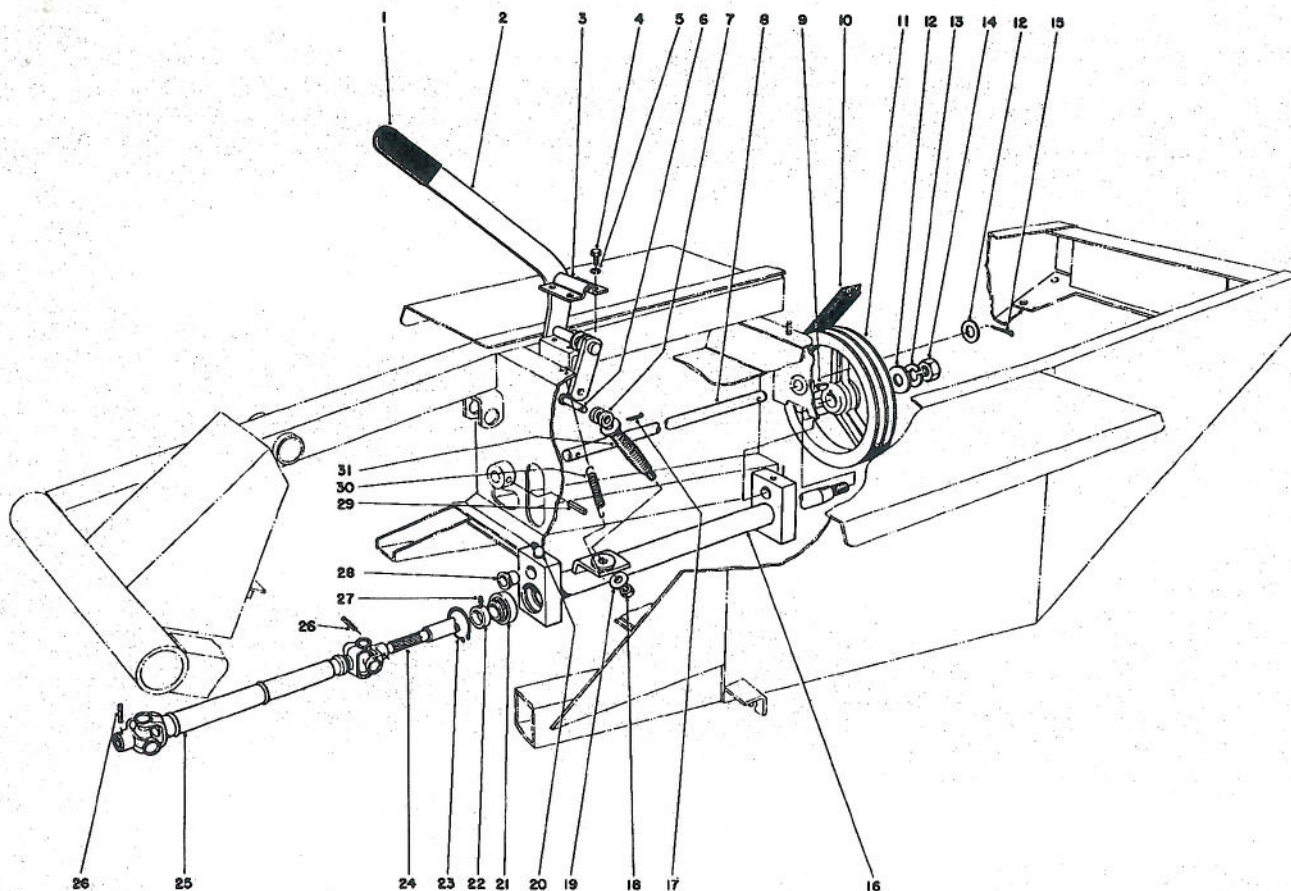
Ref. No.	Part No.	Description	No. Used
23	13-6480	Battery	1
24	32103-2	Wing Nut	3
25	24-6420	Hold Down Battery	2
26	3217-7	Nut	1
27	3253-21	Lockwasher	1
28	2412-41	Clamp	1
29	323-6	Capscrew	1
30	21-5510	Decal — Starting Instructions	1
31	18-7040	Decal Gas	1
32	3229-10	Carriage Bolt	5
33	3253-3	Lockwasher	5
34	3217-5	Nut	5
35	23-1310	Frame	1
36	23-2060	Tool Box	1
37	3217-6	Nut	4
38	32144-10	Self Tapping Screw	11
39	21-2770	Pad — Foot Rest R.H.	1
40	21-2760	Pad — Foot Rest L.H.	1
41	23-5220	Floor Plate	1
42	24-6390	Stud Battery Hold Down	2
43	24-9740	Cover Battery Access	1



SEAT, RADIATOR AND HOOD ASSEMBLY

Ref. No.	Part No.	Description	No. Used
1	351-59	Seat Cushion	1
2	351-64	Rail R.H.	1
3	351-60	Backrest	1
4	351-65	Rail L.H.	1
5	3234-5	Hex Flange Screw	14
6	351-63	Adjuster L.H.	1
7	351-62	Adjuster R.H.	1
8	351-61	Connecting Rod	1
9	3217-6	Nut	17
10	3253-4	Lockwasher	19
11	3256-23	Flat Washer	11
12	2412-41	Clamp	1
13	23-1760	Sealing Plate — Grille	1
14	322-5	Capscrew	3
15	11-0590	Capscrew Self Tapping	2
16	23-1690	Radiator	1
17	23-1770	Grille	1
18	23-1700	Radiator Support	1
19	32103-2	Wing Nut	2
20	32144-10	Self Tapping Screw	4
21	21-0380	Radiator Pressure Cap	1

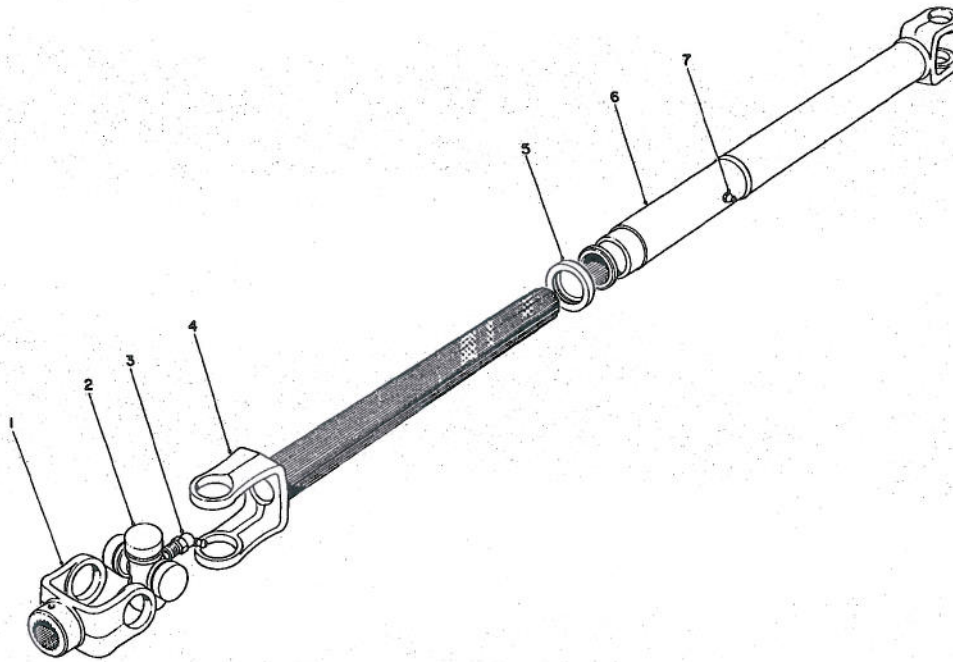
Ref. No.	Part No.	Description	No. Used
22	2412-42	Hose Clamp	1
23	23-2150	Hood	1
24	18-2180	Decal Toro	1
25	21-2650	Decal Groundsmaster 72	2
26	21-2590	Upper Hose	1
27	322-3	Capscrew	10
28	3234-1	Screw Hex Flange	2
29	2412-3	Hose Clamp	1
30	21-2600	Lower Hose	1
31	249-21	Clamp — Hook	1
32	32140-43	Sems Screw	2
33	304-46	Drain Cock	1
34	32128-19	Flange Locking Nut	2
35	353-548	Elbow	2
36	3217-7	Nut	2
37	3253-21	Lockwasher	2
38	24-5630	Seat Support Bracket	1
39	24-5600	Seat Support	1
40	323-12	Capscrew	2
41	10-9240	Seat Clamp	2



POWER TAKE OFF ASSEMBLY

Ref. No.	Part No.	Description	No. Used
1	21-1880	Grip Handle	1
2	21-1550	Lever P.T.O.	1
3	21-1600	Clamp P.T.O.	1
4	32104-6	Self Tapping Screw	4
5	3253-21	Lockwasher	4
6	283-15	Clevis Pin	1
7	21-2080	Yoke End	1
8	23-2020	Shaft — Pivot P.T.O	1
9	3257-5	Woodruff Key	1
10	23-1820	V-Belt	1
11	21-0230	Pulley P.T.O	1
12	3256-28	Flat Washer	2
13	3254-7	Lockwasher	1
14	3219-7	Full Nut	1
15	3272-22	Cotter Pin	1
16	23-1980	Pivot P.T.O. (Incl. Ref. #28)	1

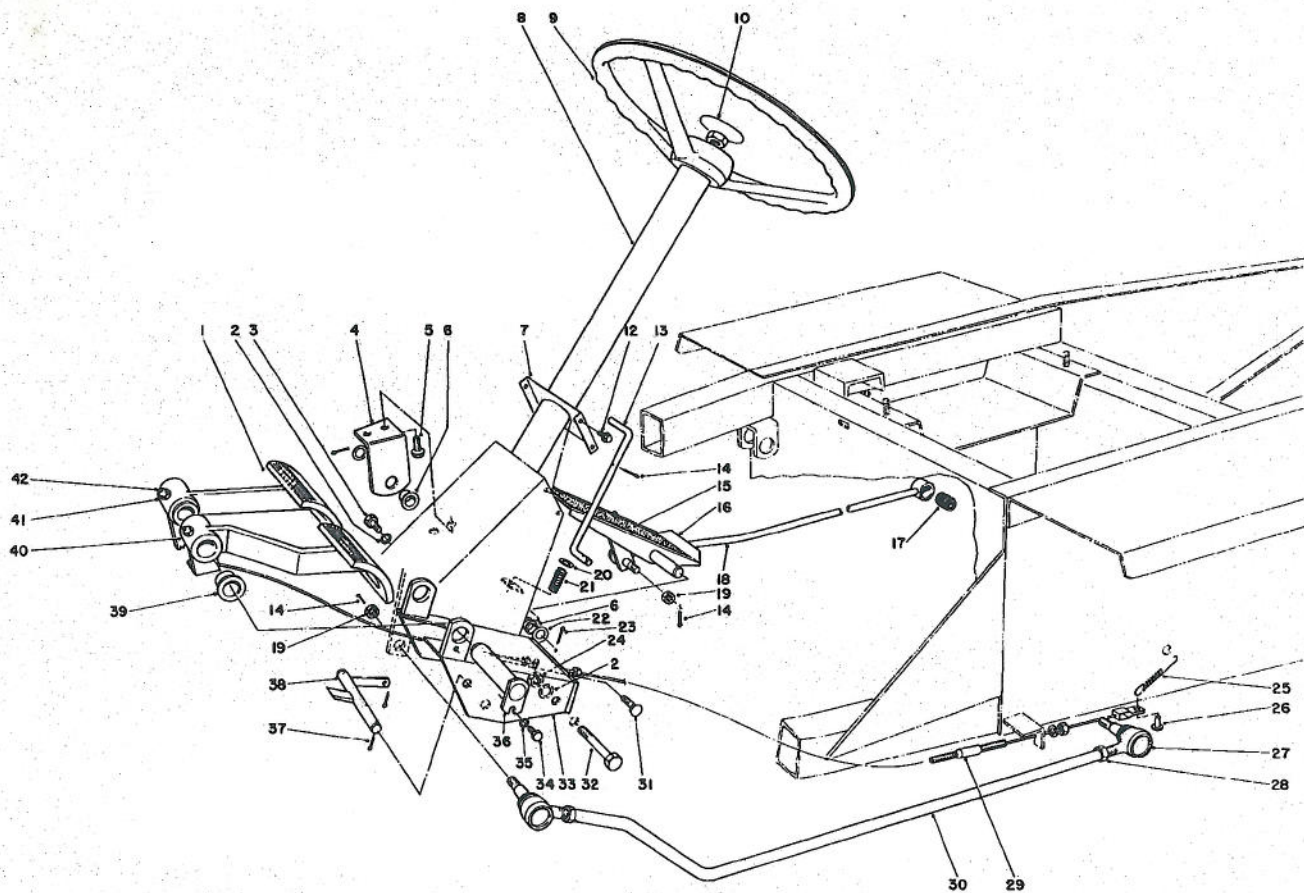
Ref. No.	Part No.	Description	No. Used
17	3272-10	Cotter Pin	1
18	3296-26	Lock Nut	1
19	3256-36	Flat Washer	1
20	302-10	Grease Fitting	2
21	251-252	Ball Bearing (Incl. Ref. #22&27)	2
22	251-234	Lock Collar (Inc. Ref. #27)	2
23	32120-22	Snap Ring	2
24	23-2010	Shaft P.T.O.	1
25	21-3090	Universal Joint	1
26	32121-34	Roll Pin	2
27	3245-1	Set Screw	2
28	256-136	Bushing	2
29	32121-9	Roll Pin	1
30	21-1830	Spring Tension	1
31	21-0400	Spring Compression	1



DRIVE SHAFT ASSEMBLY — 21-3090

Ref. No.	Part No.	Description	No. Used
1	21-5960	End Yoke	2
2	21-5970	U-Joint Kit	2
3	21-5980	Grease Fitting	2
4	21-6030	Slip Yoke Shaft	1

Ref. No.	Part No.	Description	No. Used
5	21-5990	Dust Cap Assembly	1
6	21-6020	Slip Yoke Tube	1
7	21-6010	Grease Fitting	1

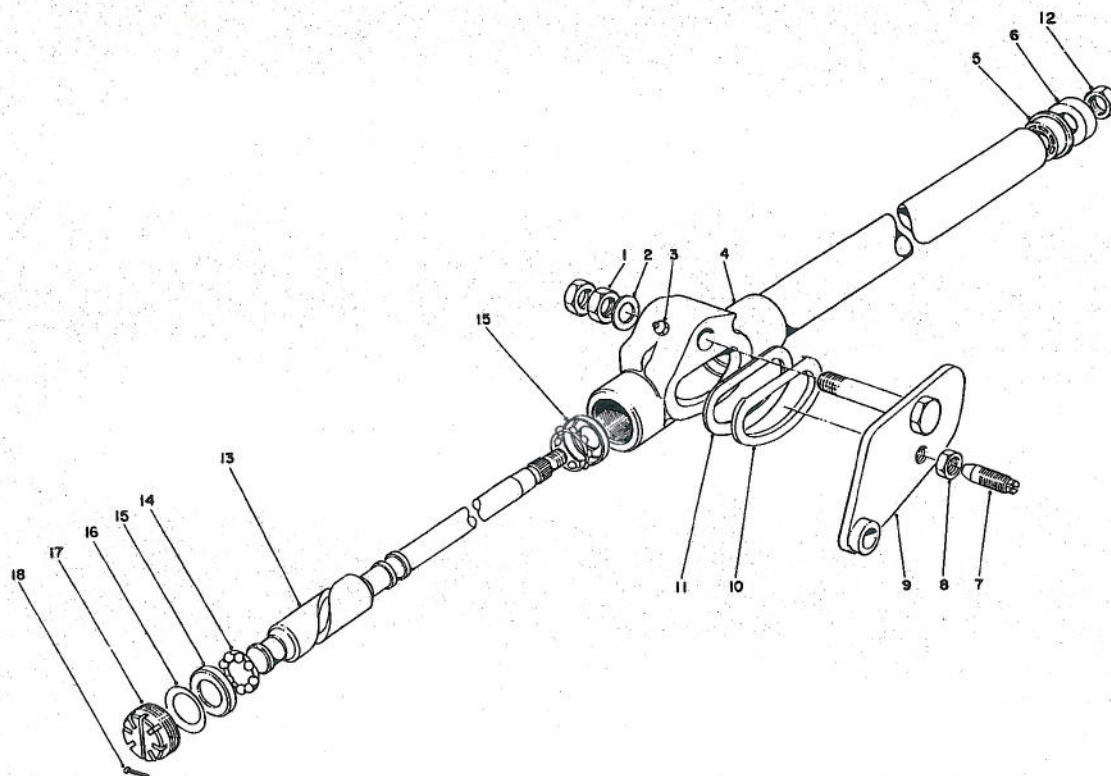


BRAKE AND STEERING GEAR ASSEMBLY

Ref. No.	Part No.	Description	No. Used
1	7-3900	Foot Pad — Brake	2
2	3253-21	Lockwasher	7
3	323-6	Capscrew	3
4	21-2850	Pedal Mount R.H.	1
5	11-0590	Capscrew Self Tapping	2
6	256-156	Bushing	2
7	21-2170	Support — Steering Column	1
8	22-6380	Steering Gear	1
9	24-2000	Steering Wheel	1
10	24-2090	Cap — Steering Wheel	1
12	32144-10	Self Tapping Screw	4
13	21-3360	Actuating Rod — Brake	1
14	3272-6	Cotter Pin	6
15	21-2780	Pad — Pedal	1
16	21-2700	Pedal	1
17	23-2270	Rubber Bushing	1
18	23-2240	Pump Control Rod	1
19	32136-4	Slotted Nut	3
20	3256-22	Washer	1
21	3-3251	Compression Spring	1
22	3256-26	Flat Washer	2

Ref. No.	Part No.	Description	No. Used
23	3272-10	Cotter Pin	2
24	3217-7	Nut	4
25	3-7243	Spring Extension	2
26	283-30	Clevis Pin	2
27	21-0140	Socket Assy.	3
28	3220-5	Jam Nut	3
29	21-3380	Brake Cable L.H.	1
*	21-3370	Brake Cable R.H.	1
30	21-2150	Tube Front Steering	1
31	3231-21	Carriage Bolt	2
32	323-13	Capscrew	2
33	21-3170	Brake Mount	1
34	321-2	Capscrew	1
35	3253-3	Lockwasher	1
36	21-2570	Brake Pivot Pin	1
37	3272-7	Cotter Pin	2
38	21-3320	Brake Latch Shaft	1
39	256-10	Bushing	4
40	21-3260	Brake Pedal L.H.	1
41	21-3220	Brake Pedal R.H.	1
42	302-5	Grease Fitting	2

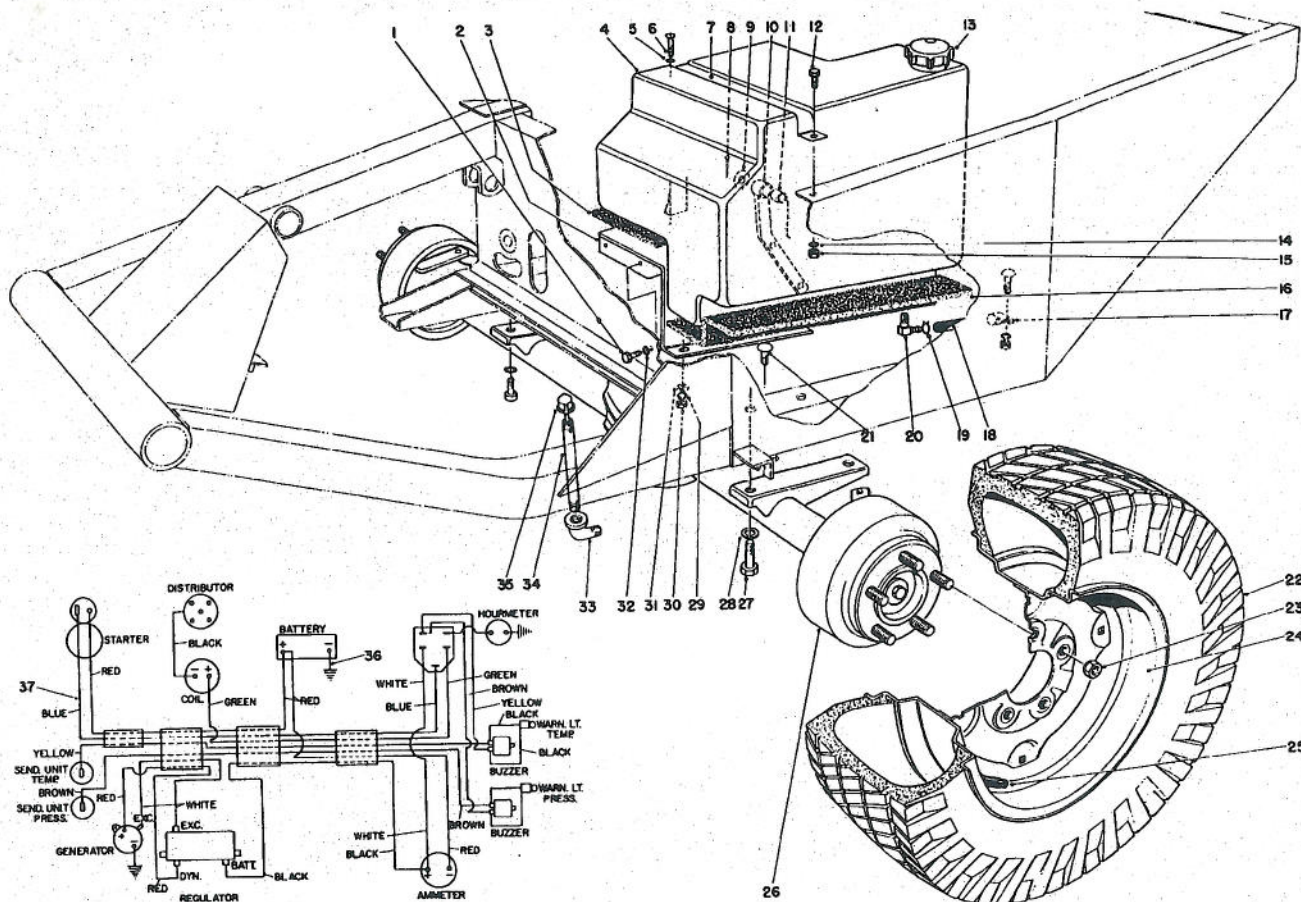
*Not Illustrated



STEERING GEAR ASSEMBLY — 22-6380

Ref. No.	Part No.	Description	No. Used
1	3220-7	Jam Nut	2
2	22-8310	Washer	1
3	302-16	Grease Fitting	1
4	22-8290	Housing & Jacket Tube Assy.	1
5	21-9270	Column Bearing	1
6	21-9260	Dust Cover	1
7	22-8300	Lever Stud	1
8	3219-10	Jam Nut	1
9	22-8280	Steering Lever & Bolt Assembly	1

Ref. No.	Part No.	Description	No. Used
10	22-8470	Seal Retainer	1
11	22-8460	Seal	1
12	3220-6	Jam Nut	1
13	21-9280	Cam & Tube Assembly	1
14	21-9170	Retainer & Ball Assembly	2
15	21-9160	Ball Cup	2
16	21-9150	Belleville Washer	1
17	21-9130	Adjusting Plug	1
18	3272-9	Cotter Pin	1

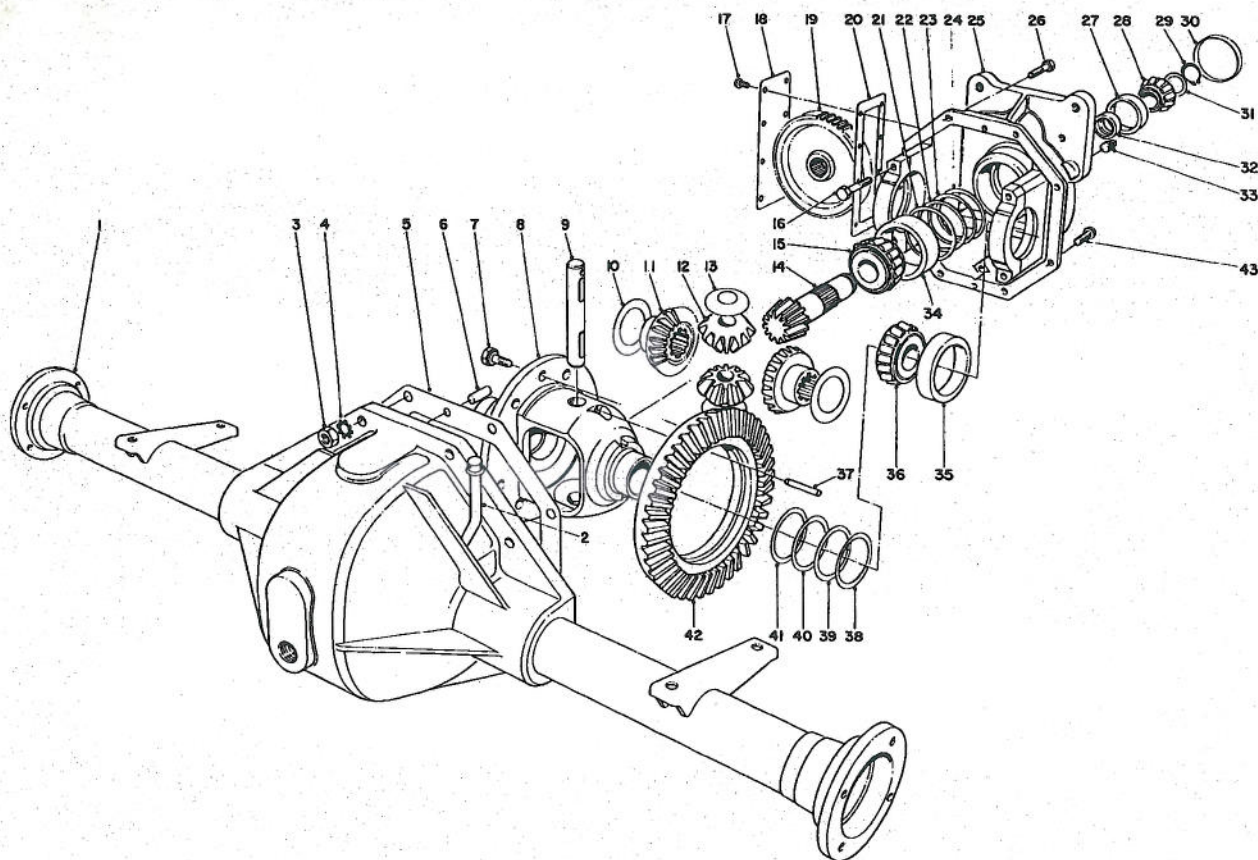


FRONT AXLE AND GAS TANK ASSEMBLY

Ref. No.	Part No.	Description	No. Used
1	323-4	Capscrew	2
2	23-2100	Gas Tank Base	1
3	21-3600	Foam Tank Support	1
4	21-3620	Gas Tank (Inc. Ref. #20)	1
5	3255-7	Washer	1
6	3258-19	Machine Screw Rd. Hd.	1
7	21-3630	Strap Gas Tank	1
8	3272-13	Cotter Pin	1
9	10-8110	Washer Thrust	1
10	23-2080	Steering Link (Inc. Ref. #11)	1
11	256-237	Bushing	1
12	321-4	Capscrew	1
13	10-7950	Gas Cap	1
14	3253-3	Lockwasher	1
15	3217-5	Nut	1
16	21-3610	Foam -- Tank Support	1
17	2412-41	Clamp	1
18	23-2140	Fuel Line	1
19	2412-6	Clamp	1

Ref. No.	Part No.	Description	No. Used
20	353-536	Elbow	1
21	3230-2	Carriage Bolt	3
22	231-41	Tire	2
23	23-7270	Wheel Nut	10
24	217-105	Rim	2
25	232-27	Valve Stem	2
26	24-8850	Axle	1
27	324-5	Capscrew	4
28	3253-6	Lockwasher	4
29	3253-4	Lockwasher	3
30	3217-6	Nut	3
31	3256-23	Flat Washer	2
32	3253-21	Lockwasher	2
33	2811-9	Street Elbow	1
34	289-37	Pipe Nipple	1
35	23-5180	Dipstick	1
36	218-219	Ground Cable	1
37	21-2360	Wire Harness	1
*	21-0170	Front Wheel Assembly (Incl. Ref. #22, 24, & 25)	2

*Not Illustrated

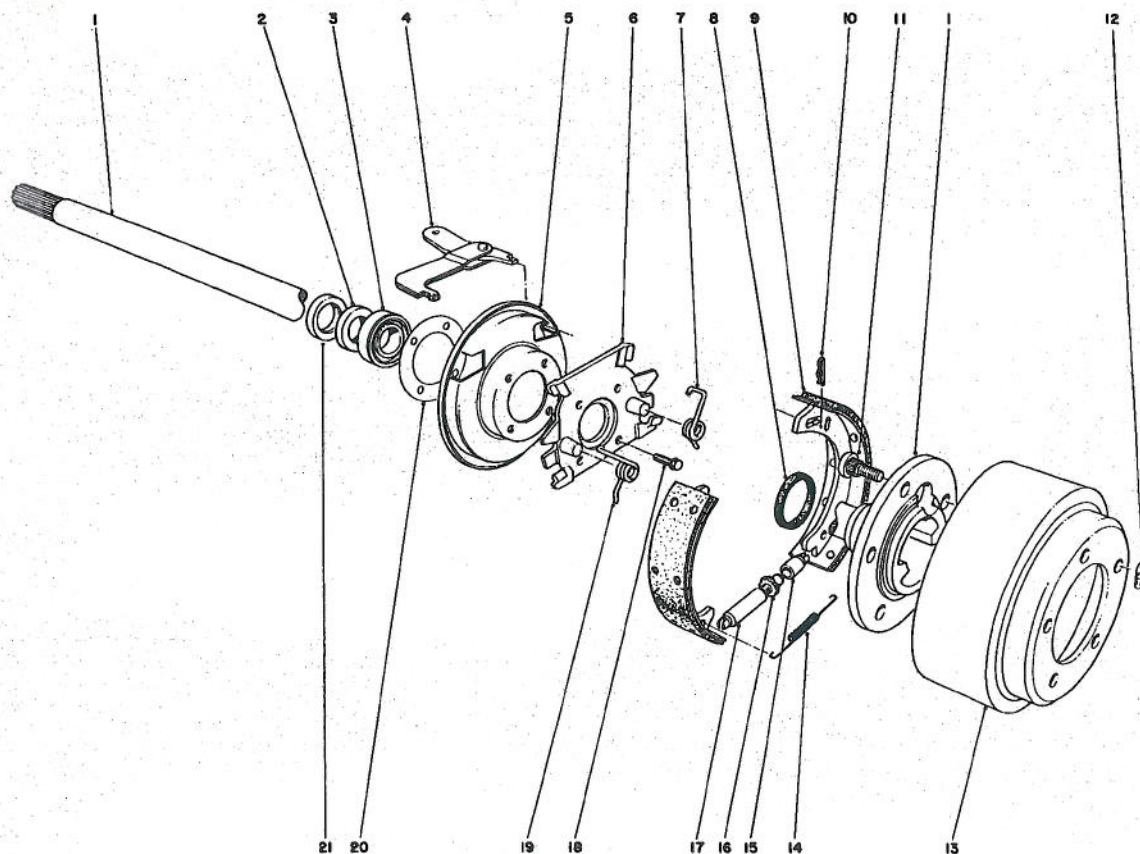


DIFFERENTIAL ASSEMBLY

Ref. No.	Part No.	Description	No. Used
1	24-8820	Lower Housing & Tube Ass'y	1
2	21-8230	Vent Tube Assembly	1
3	3219-2	Nut	4
4	3255-8	Lockwasher	4
5	21-8280	Housing Gasket	1
6	21-8270	Dowel Pin	2
7	21-7770	Drive Gear Screw	10
8	21-7670	Differential Case	1
9	21-7700	Pinion Mate Shaft	1
10	21-7720	Thrust Washer	2
11	24-8790	Differential Bevel Side Gear	2
12	21-7690	Pinion Gear	2
13	21-7730	Thrust Washer	2
14		Drive Pinion (Incl. with Ref. #42)	1
15	21-8080	Tapered Roller Bearing Cone	1
16	324-23	Capscrew	4
17	12-5450	Thread Forming Screw	8
18	21-7830	Gear Cover	1
19	21-8150	Spur Gear	1
20	21-7820	Gasket - Gear Cover	1
21	21-8030	Pin Bearing Shim .003	A/R
22	21-8040	Pin Bearing Shim .005	A/R
23	21-8050	Pin Bearing Shim .010	A/R
24	21-8060	Pin Bearing Shim .030	A/R
25	24-8800	Upper Housing Assembly	1
26	3210-7	Capscrew	4
27	21-8390	Bearing Cup	1
28	21-8010	Bearing Cone	1
29	32120-32	Retaining Ring	1

*Not Illustrated

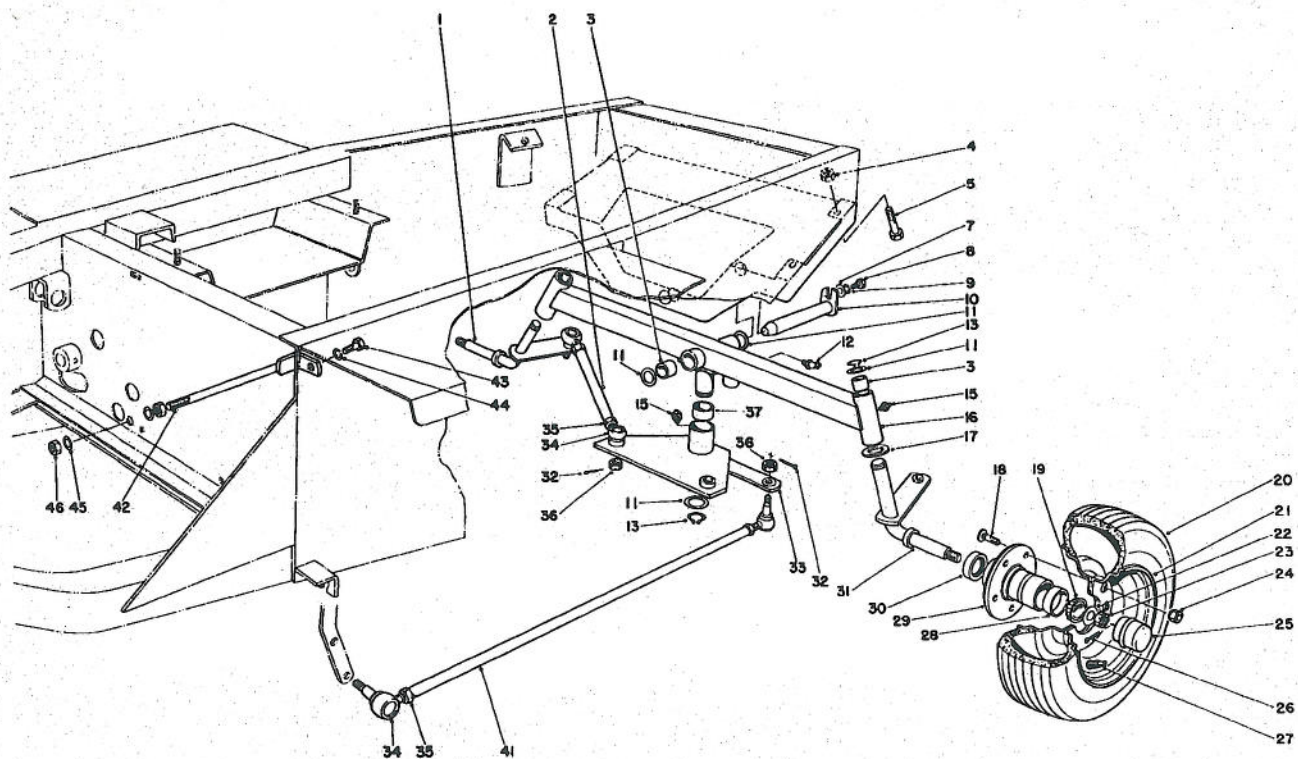
Ref. No.	Part No.	Description	No. Used
30	21-7850	Cup Plug	1
31	21-7870	Pin Bearing Shim Front (.031)	A/R
*	21-7880	Pin Bearing Shim Front (.033)	A/R
*	21-7890	Pin Bearing Shim Front (.035)	A/R
*	21-7900	Pin Bearing Shim Front (.037)	A/R
*	21-7910	Pin Bearing Shim Front (.039)	A/R
*	21-7920	Pin Bearing Shim Front (.041)	A/R
*	21-7930	Pin Bearing Shim Front (.043)	A/R
*	21-7940	Pin Bearing Shim Front (.045)	A/R
*	21-7950	Pin Bearing Shim Front (.047)	A/R
*	21-7960	Pin Bearing Shim Front (.049)	A/R
*	21-7970	Pin Bearing Shim Front (.051)	A/R
*	21-7980	Pin Bearing Shim Front (.053)	A/R
*	21-7990	Pin Bearing Shim Front (.055)	A/R
*	21-8000	Pin Bearing Shim Front (.057)	A/R
32	21-8020	Front Pinion Bearing Spacer	1
33	281-2	Pipe Plug	1
34	21-8070	Tapered Roller Bearing Cup	1
35	254-66	Cup - Tapered Bearing	2
36	254-65	Cone - Tapered Bearing	2
37	21-7710	Roll Pin	1
38	21-8090	Differential Adjust. Shim .003	A/R
39	21-8100	Differential Adjust. Shim .005	A/R
40	21-8110	Differential Adjust. Shim .010	A/R
41	21-8120	Differential Adjust. Shim .030	A/R
42		Ring Gear	1
*	21-7740	Gear & Pinion Assembly (Incl. Ref. # 14 & 42)	1
43	21-8340	Self Tapping Screw	4



BRAKE ASSEMBLY

Ref. No.	Part No.	Description	No. Used
1	24-8810	Axle Shaft Flanged	2
2	21-8330	Oil Seal	2
3	21-8180	Bearing — Tapered Roller	2
4	21-9400	Strut & Lever Parking Brake	2
5	21-9450	Dust Shield	2
6	21-9410	Torque Spider	2
7	21-9430	Spring — Shoe Return R.H.	2
8	21-8290	Seal - Felt	2
9	21-9470	Shoe & Lining Ass'y (2 Shoes)	2
10	21-9460	Retainer — Parking Brake Lever	4
11	242-34	Axle Flange Stud	10

Ref. No.	Part No.	Description	No. Used
12	21-8360	Clip — Retaining	2
13	21-8370	Brake Drum	2
14	21-9440	Spring — Adjusting Screw	2
15	21-9390	Socket — Adjusting Screw	2
16	21-9370	Adjusting Screw	2
17	21-9380	Pivot Nut	2
18	21-8340	Self-Tapping Screw	8
19	21-9420	Spring — Shoe Return L.H.	2
20	21-8320	Gasket Wheel Bearing	2
21	24-8840	Ring Wheel Bearing	2

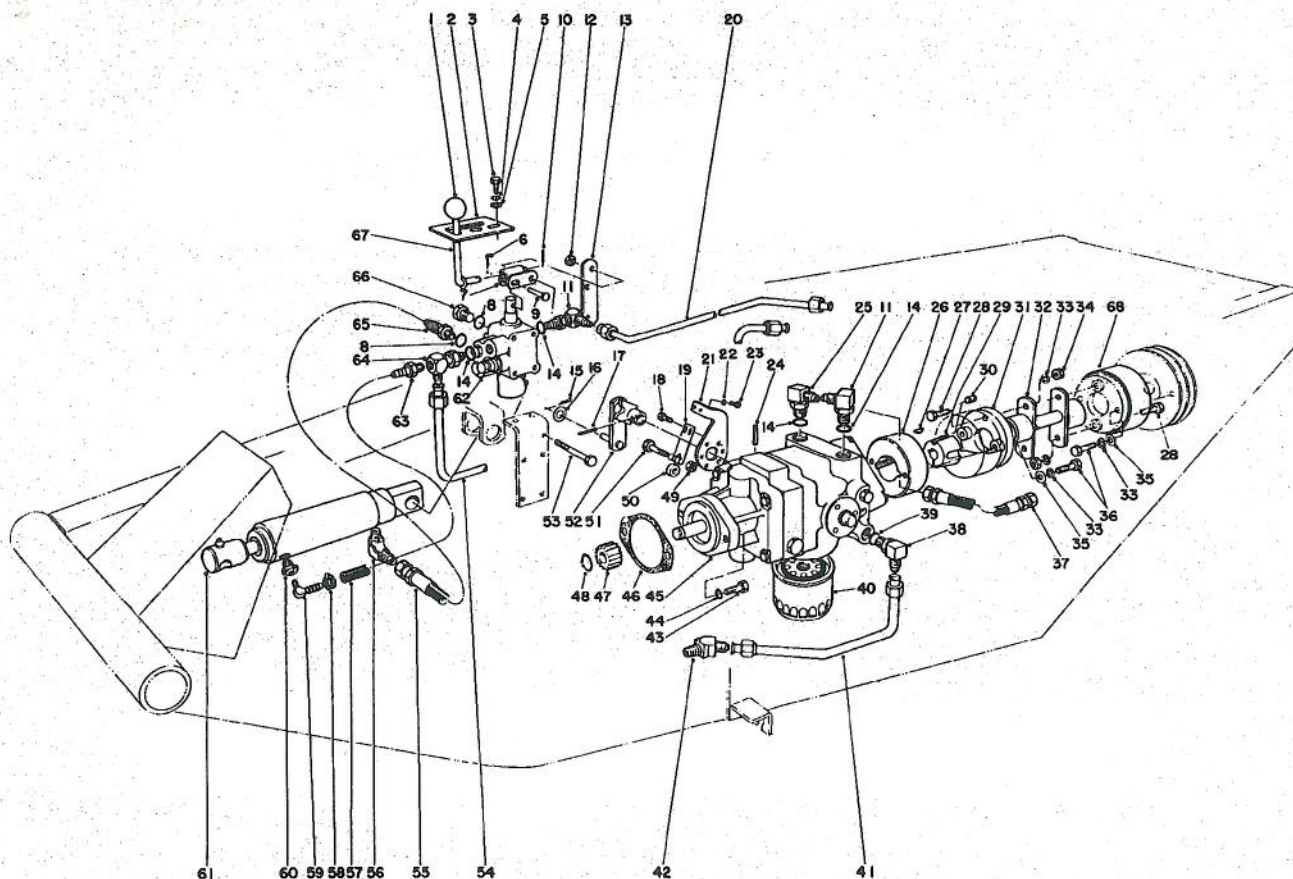


REAR AXLE AND WHEEL ASSEMBLY

Ref. No.	Part No.	Description	No. Used
1	21-1930	Spindle Assembly R.H.	1
2	21-2000	Tie Rod	2
3	3-0348	Bushing	6
4	32128-23	Flange Nut	4
5	325-7	Capscrew	4
7	3256-23	Flat Washer	1
8	322-3	Capscrew	1
9	3253-4	Lockwasher	1
10	23-1540	Rear Axle Pin	1
11	10-8110	Thrust Washer	5
12	302-11	Grease Fitting	1
13	32151-36	Ring - Retaining	3
15	302-5	Grease Fitting	3
16	23-1480	Rear Axle (Incl. Ref. # 3)	1
17	256-121	Thrust Bushing	2
18	10-6830	Drive Stud	10
19	254-94	Bearing Cone	4
20	231-43	Tire	2
21	217-106	Rim	2
22	3256-28	Washer	2
23	32136-5	Nut Slotted	2
24	242-50	Wheel Nut	10
25	241-119	Dust Cap	2

Ref. No.	Part No.	Description	No. Used
26	3272-13	Cotter Pin	2
27	232-31	Valve Stem	2
28	254-72	Bearing Cup	4
29	21-2820	Wheel Hub (Incl. Ref. #18 & 28)	2
30	253-129	Seal	2
31	21-1980	Spindle Assembly L.H.	1
32	3272-6	Cotter Pin	6
33	23-1510	Rear Steering Pivot (Incl. Ref. # 37)	1
34	21-0140	Socket R.H. Thread	3
*	21-0150	Socket L.H. Thread	3
35	3220-5	Jam Nut R.H. Thread	3
*	3220-12	Jam Nut L.H. Thread	3
36	32136-4	Slotted Nut	6
37	256-242	Bushing	2
41	21-2100	Tube Rear	1
42	24-9830	Axle Support	1
43	323-6	Capscrew	1
44	3253-21	Lockwasher	1
45	3256-6	Washer	2
46	3217-9	Nut	2
*	21-0190	Wheel & Tire Assembly (Incl. Ref. # 20, 21 & 27)	2

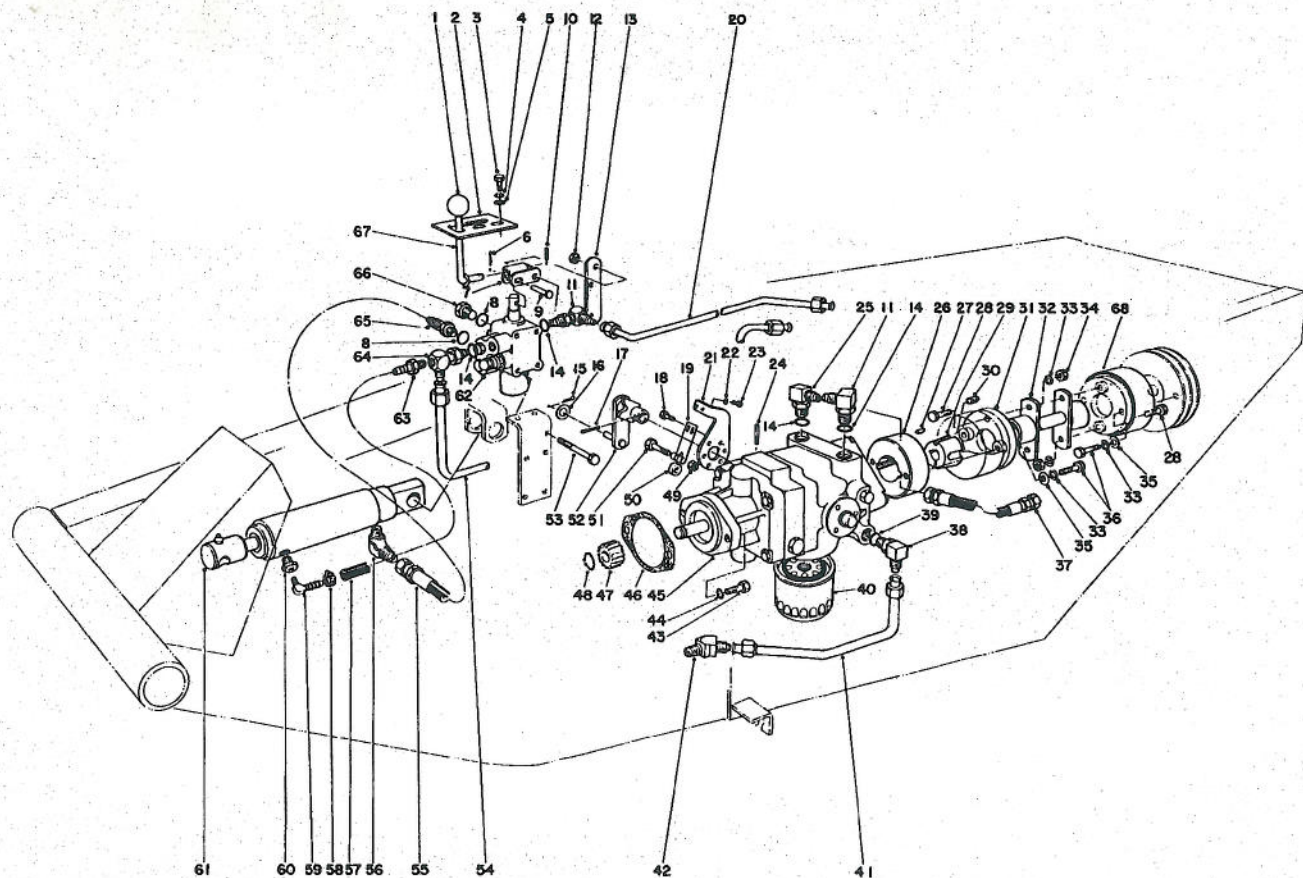
*Not Illustrated



HYDROSTATIC TRANSMISSION AND VALVE ASSEMBLY

Ref. No.	Part No.	Description	No. Used
1	233-21	Knob	1
2	21-8640	Latch-Valve Lever	1
3	321-4	Capscrew	2
4	3253-3	Lockwasher	2
5	3256-22	Flat Washer	2
6	3272-6	Cotter Pin	1
7	21-8590	Valve Lever Link	1
8	237-78	O-Ring	2
9	283-17	Pin	1
10	32121-73	Slotted Spring Pin	1
11	353-374	Fitting 90° Elbow	2
12	3296-42	Nut	5
13	21-9010	Pivot Mount-Valve Lever	1
14	237-42	O-Ring	4
15	3272-10	Cotter Pin	1
16	3256-6	Flat Washer	1
17	32121-24	Roll Pin	1
18	32104-42	Self Tapping Screw	3
19	22-7400	Leaf Spring	1
20	23-1880	Tube Pressure Line	1
21	22-7410	Pump Plate	1
22	3256-51	Washer	2
23	32140-40	Hex Hd. Machine Screw	2
24	32121-6	Roll Pin	1

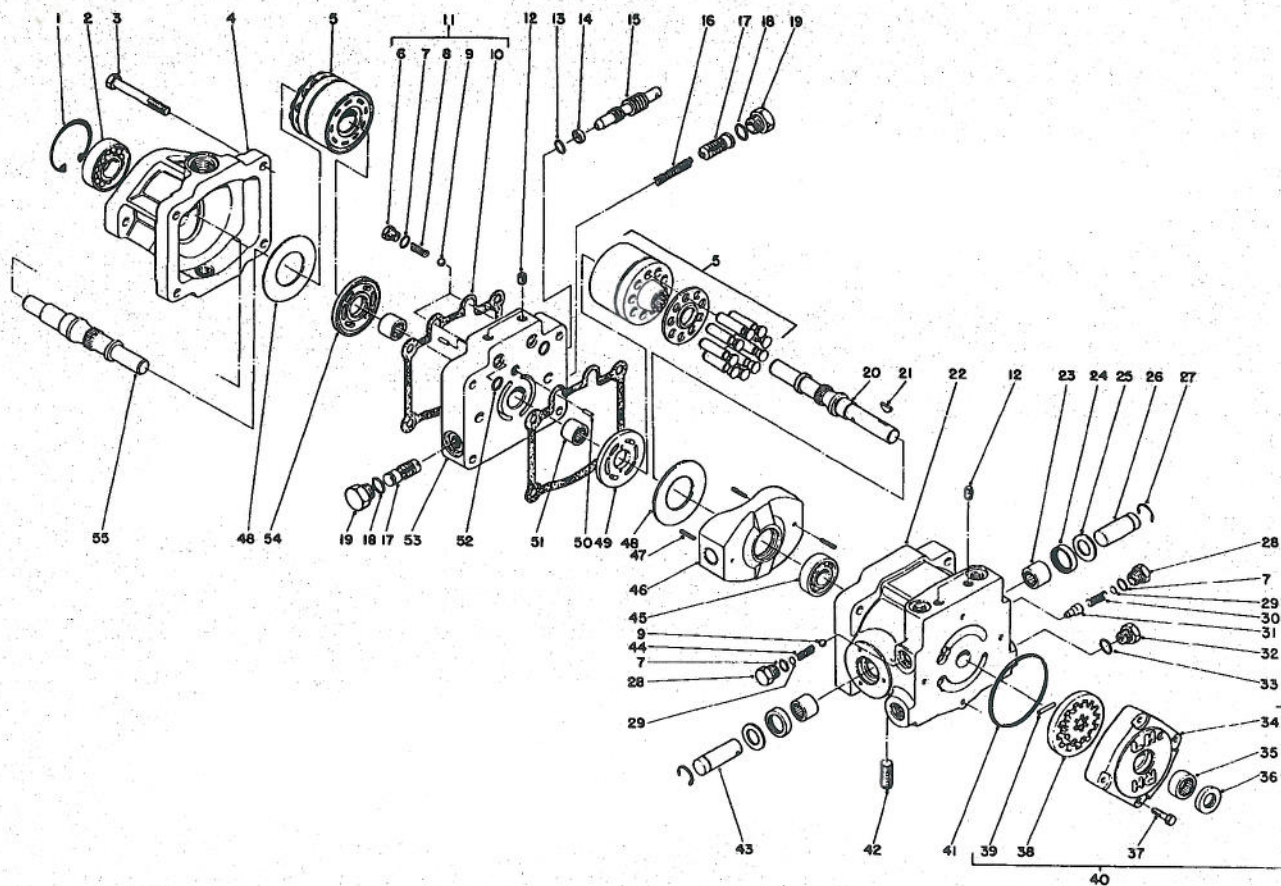
Ref. No.	Part No.	Description	No. Used
25	353-511	Elbow	1
26	23-1830	Hub-Transmission Drive	1
27	3257-32	Woodruff Key	1
28	322-9	Capscrew	4
29	23-1840	Bushing Taper Lock	1
30	3247-4	Setscrews	2
31	24-0080	Coupling — Flexible	2
32	23-8920	Drive Coupling	1
33	3253-4	Lockwasher	8
34	3217-6	Nut	4
35	3256-23	Washer	4
36	322-10	Capscrew	4
37	23-3850	Tube Cooler to Pump	1
38	353-370	Elbow	1
39	237-80	O-Ring	1
40	23-2300	Oil Filter	1
41	23-1900	Tube Assembly Axle to Pump	1
42	353-535	Elbow	1
43	323-7	Capscrew	2
44	3253-21	Lockwasher	2
45	22-4760	Transmission — Inline (Incl. Ref. #27 & 47)	1
46	23-1800	Gasket — Transmission	1
47	23-4810	Gear	1



HYDROSTATIC TRANSMISSION & VALVE ASSEMBLY (Continued)

Ref. No.	Part No.	Description	No. Used
48	32120-72	Snap Ring	1
49	3296-29	Locknut	1
50	251-259	Bearing	1
51	322-17	Hex Hd. Capscrew	1
52	23-2200	Pump Lever	1
53	321-23	Capscrew	5
54	23-1890	Tube-Valve to Cooler	1
55	21-8580	Hose-Valve to Cylinder	1
56	5-6560	Elbow .078 Orifice	1
57	6-1190	Hose	1
58	2412-36	Hose Clamp	2

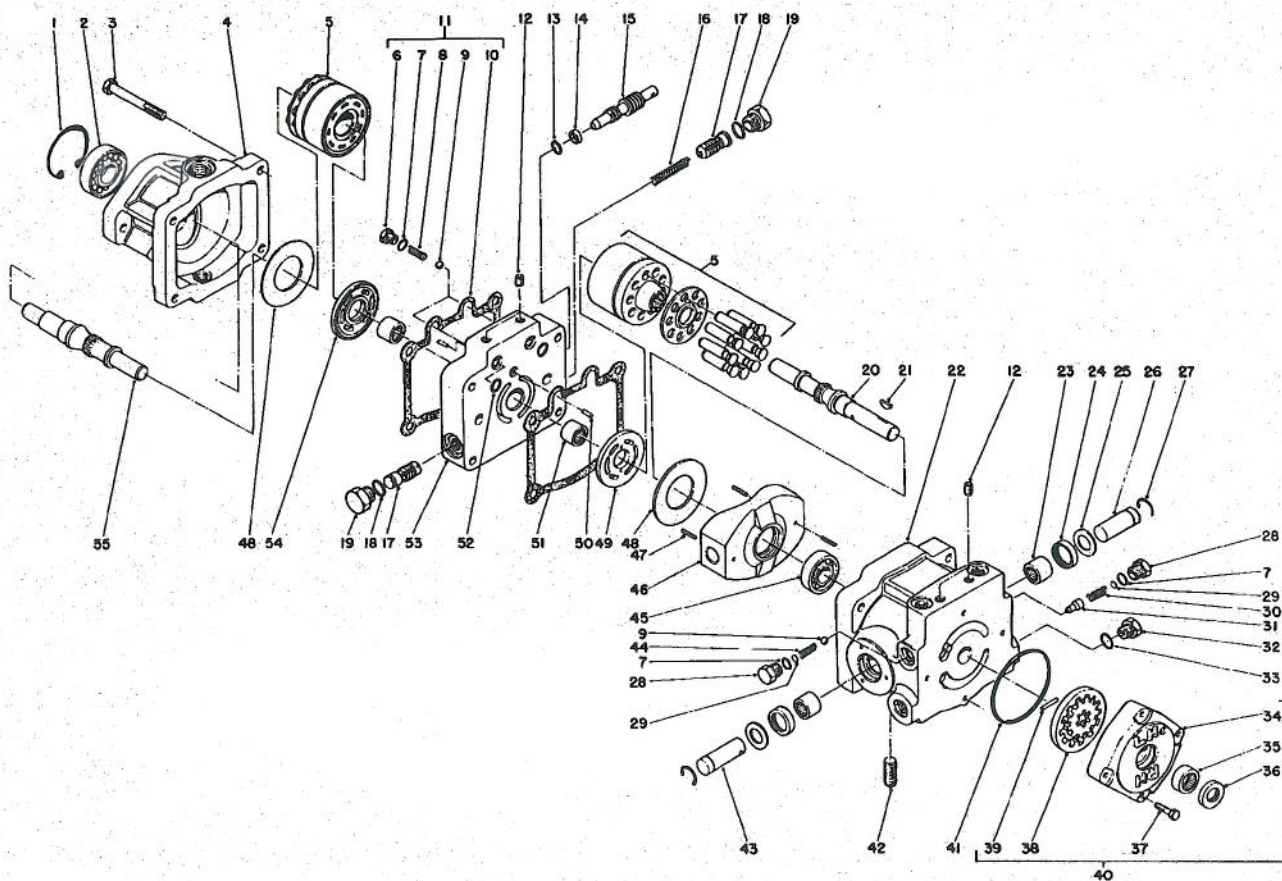
Ref. No.	Part No.	Description	No. Used
59	304-75	Barb 90° Fitting	1
60	304-97	Reducer Bushing	1
61	21-0390	Hydraulic Cylinder	1
62	21-8550	Valve-Hydraulic Control	1
63	304-73	Barb Straight Fitting	1
64	21-4940	Fitting Assembly	1
65	353-375	Fitting 90° Elbow	1
66	353-512	Plug	1
67	21-8620	Valve Lever	1
68	24-6160	Retainer Coupling	2



TRANSMISSION ASSEMBLY

Ref. No.	Part No.	Description	No. Used
1	32120-8	Retaining Ring	1
2	251-263	Ball Bearing	1
3	323-13	Capscrew	4
4	25-2360	Motor Housing	1
5	25-2600	Cylinder Block Kit	2
6	25-2650	Check Valve Plug	2
7	237-86	O-Ring	4
8	25-2640	Valve Spring	2
9	25-2490	Ball	3
10	25-2400	Gasket	2
11	25-3180	Check Valve Kit (Incl. Ref. #6-10)	1
12	285-17	Pipe Plug	6
13	237-22	O-Ring	1
14	25-2630	Back Up Ring	1
15	25-2620	By Pass Valve	1
16	25-2610	Accel. Valve Spring	1

Ref. No.	Part No.	Description	No. Used
17	25-2410	Accel. Valve Assembly	1
18	237-79	O-Ring	2
19	353-550	Hex. Hd. Plug	2
20	25-2590	Pump Shaft	1
21	3257-32	Woodruff Key	1
22	25-2520	Pump Housing	1
23	252-82	Needle Bearing	2
24	25-3210	Lip Seal	2
25	25-2510	Flat Washer	2
26	25-2580	Trunnion Shaft	1
27	32151-46	Retaining Ring	2
28	25-2460	Hex. Hd. Plug	2
29	25-2470	Shim Pack	2
30	25-2570	Valve Spring	1
31	25-2560	Relief Valve Cone	1
32	353-551	Hex. Hd. Plug	1
33	237-80	O-Ring	1



TRANSMISSION ASSEMBLY (Continued)

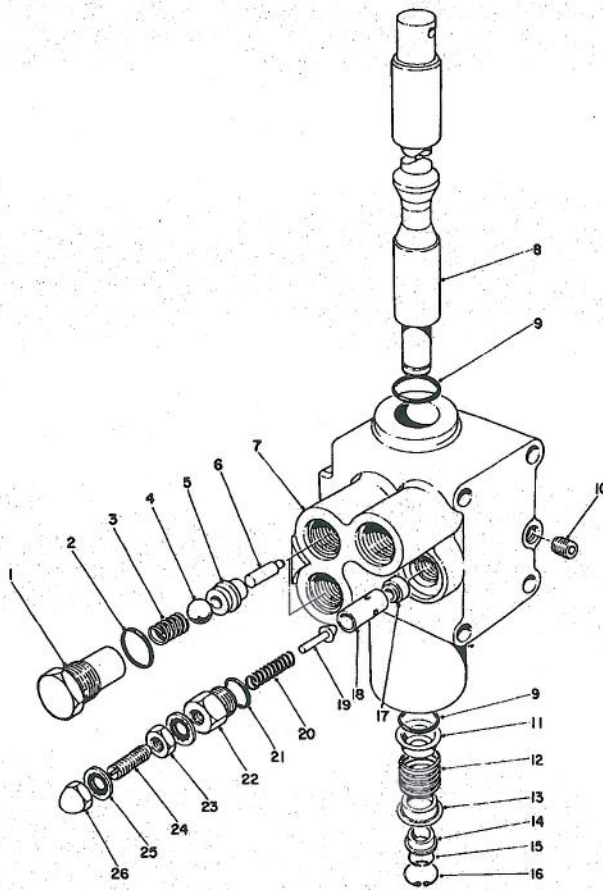
Ref. No.	Part No.	Description	No. Used
34	25-2550	Charge Pump Housing	1
35	252-87	Needle Bearing	1
36	253-44	Lip Seal	1
37	322-4	Hex. Hd. Capscrew	4
38	25-2540	Gerator Assembly	1
39	25-2530	Headless Straight Pin	1
40	25-3190	Charge Pump (Incl. Ref. #34-39)	1
41	237-95	O-Ring	1
42	25-2660	Filter Union	1
43	25-2500	Trunnion Shaft	1
44	25-2480	Valve Spring	1

Ref. No.	Part No.	Description	No. Used
45	251-8	Ball Bearing	1
46	25-2450	Variable Swashplate	1
47	32121-91	Coil Spring Pin	3
48	25-2380	Thrust Plate	2
49	25-2440	Pump Valve Plate	1
50	25-2430	Dowel Pin	2
51	25-3300	Needle Bearing	2
52	237-30	O-Ring	2
53	25-2420	Center Section	1
54	25-2390	Motor Valve Plate	1
55	25-2370	Motor Shaft	1



Ref. No.	Part No.	Description	No. Used
9	21-9070	Bearing	1
10		Lock Ring	1
11		Seal	1
12		Seal Wiper	1
13	21-9060	Rod End	1
*	21-9100	Seal Repair Kit (Incl. Ref. 5-6, 8 & 10-12)	1

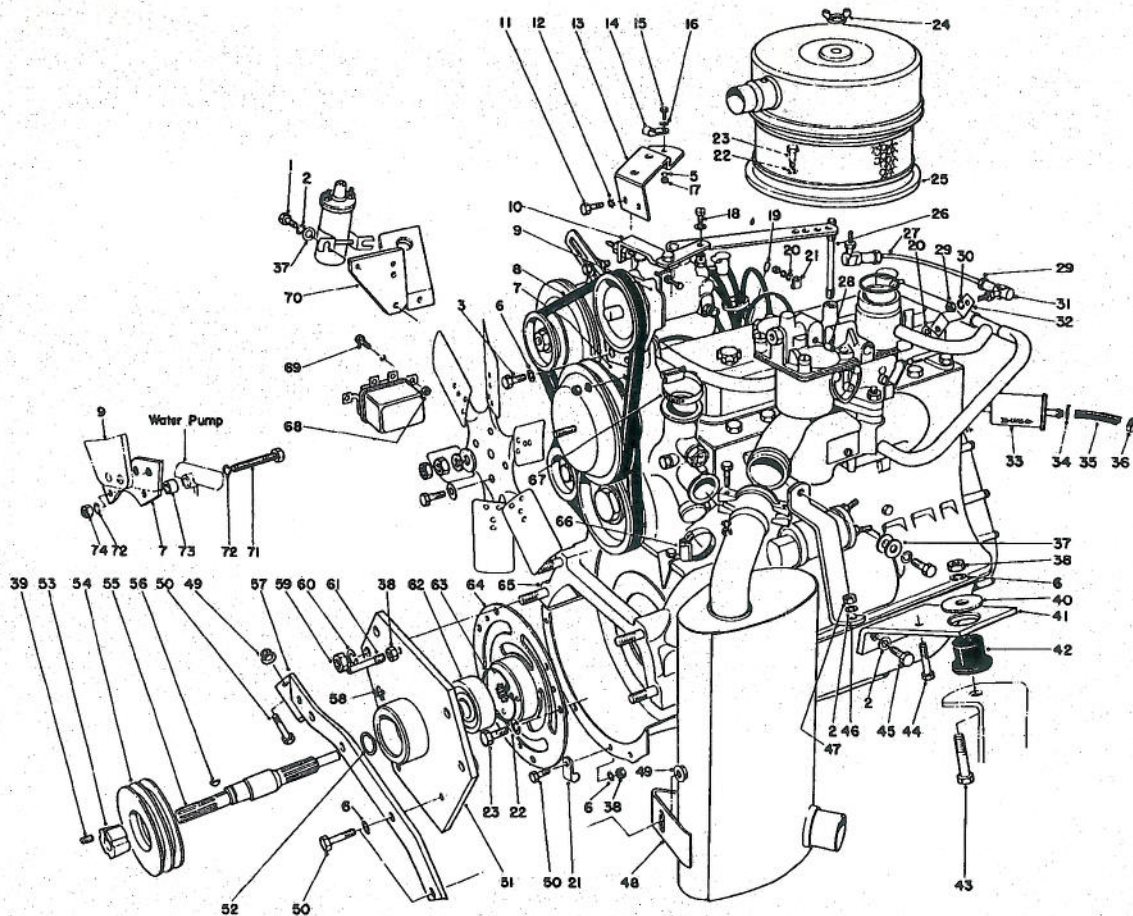
15



CONTROL VALVE — 21-8550

Ref. No.	Part No.	Description	No. Used
1	22-8330	Plug	2
2	237-42	O-Ring	2
3	22-8340	Spring	2
4	22-8350	Ball	2
5	22-8370	Seat — Check Valve	2
6	22-8360	Pin — Cam	2
7	22-8320	Body	1
8	22-8420	Spool	1
9	22-8500	O-Ring	2
10	22-8510	Plug	1
11	22-8380	Spring Retainer	1
12	22-8410	Spring	1
13	22-8390	Spring Retainer	1
14	22-8400	Spacer Float	1

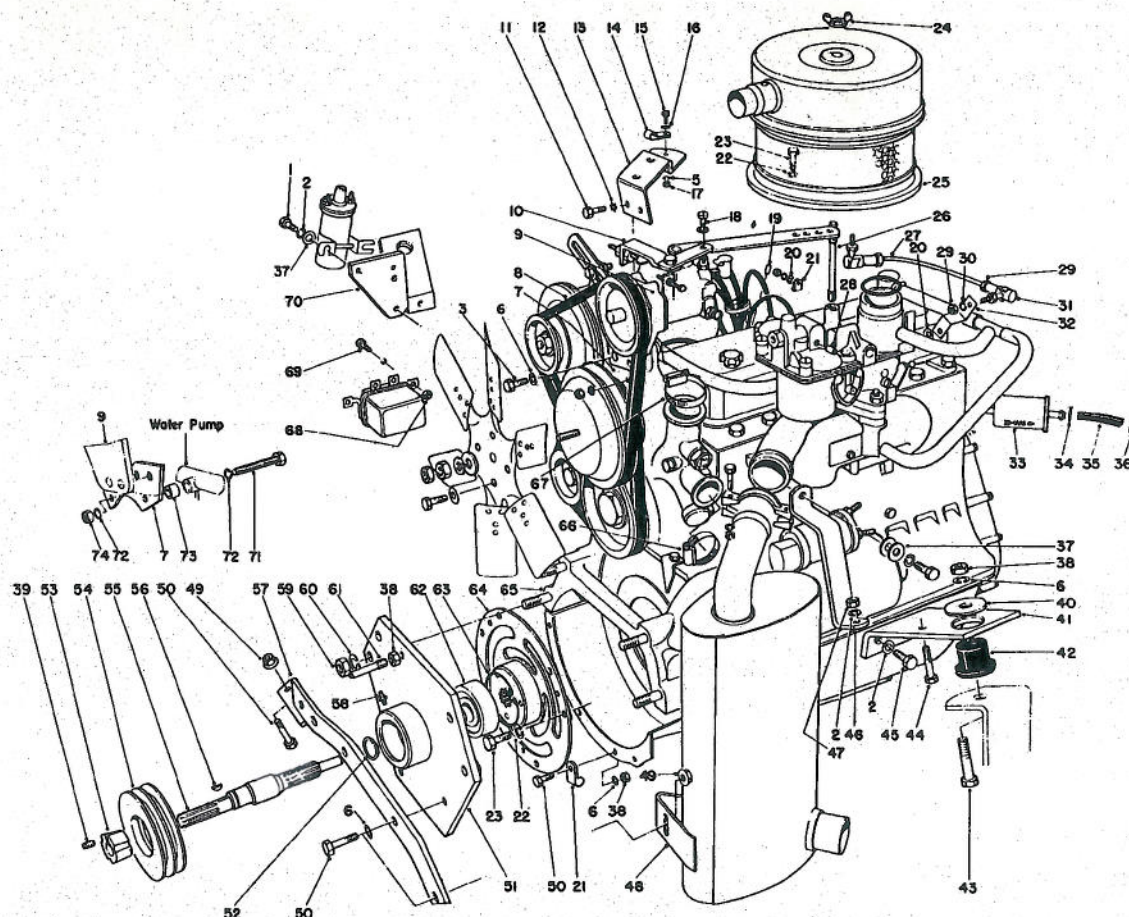
Ref. No.	Part No.	Description	No. Used
15	22-8480	Snap Ring Spool	1
16	22-8490	Snap Ring	1
17	22-8430	Seat Rel. Valve Short	1
	22-8440	Relief Valve Assembly Adj. Type (Incl. Ref. # 18-26)	1
18		Guide	1
19		Plunger	1
20		Spring	1
21		O-Ring	1
22		Cap R/V Adjustment	1
23		Jam Nut	1
24		Set Screw	1
25		Stat-O-Seal	2
26		Acorn Nut	1



ENGINE ASSEMBLY

Ref. No.	Part No.	Description	No. Used
1	322-3	Capscrew	2
2	3253-4	Lockwasher	9
3	3211-2	Capscrew	2
6	3253-21	Lockwasher	7
7	23-8670	Bracket	1
8	21-5720	Drive Belt	1
9	24-2480	Mechanical Governor	1
10	21-0420	Governor Installation	1
11	3290-366	Machine Screw	2
12	3255-10	Lockwasher	2
13	21-2180	Mount — Throttle Cable	1
14	2412-31	Clamp — Bodine	1
15	321-4	Capscrew	1
16	3256-22	Flat Washer	1
17	3217-5	Nut	1
18	21-8540	Pivot — Throttle	1
19	21-5800	Closure (Dist.)	1
20	3256-23	Flat Washer	2
21	2412-41	Clamp	2
22	21-0340	Lockwasher	7
23	21-0330	Metric Capscrew	7
24	32103-12	Wing Nut	1

Ref. No.	Part No.	Description	No. Used
25	21-2220	Base Air Cleaner	1
26	21-2240	Stud Air Cleaner	1
27	21-5630	Throttle Rod	1
28	21-5790	Closure (Carb)	1
29	3219-14	Nut	4
30	3253-12	Lockwasher	2
31	21-5640	Ball Joint	2
32	21-5620	Lever Carburetor	1
33	18-1520	Gas Filter	1
34	2412-6	Clamp	2
35	18-2400	Hose — Fuel Line	1
36	2412-36	Clamp	1
37	3256-3	Flat Washer	4
38	3217-7	Nut	6
39	3247-4	Setscrew	2
40	3-3391	Washer	2
41	21-2300	Engine Mount	1
42	21-0130	Mount Rubber	2
43	323-11	Capscrew	2
44	322-6	Capscrew	1
45	21-0350	Metric Capscrew	6
46	21-2310	Bracket Engine Mount	1

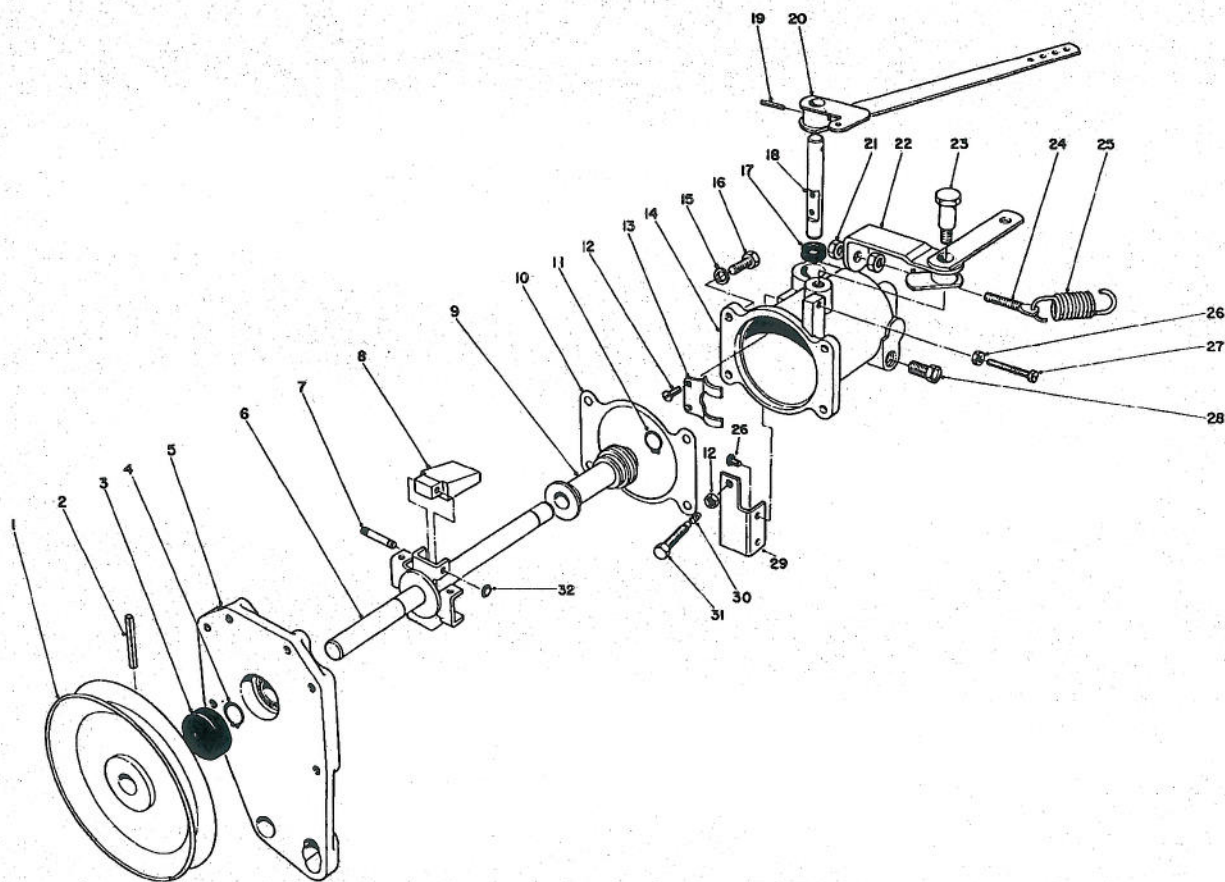


ENGINE ASSEMBLY (Continued)

Ref. No.	Part No.	Description	No. Used
47	3217-6	Full Nut	1
48	23-1850	Muffler	1
*	24-8610	Muffler Spark Arrestor	1
*	2112-9	Clamp	1
49	32128-19	Flange Nut	3
50	323-6	Capscrew	5
51	23-1570	Bearing Mount	1
52	32120-69	Snap Ring	1
53	23-1640	Bushing — Taper Lock	1
54	23-1630	Pulley Drive	1
55	23-1620	Output Shaft — Engine	1
56	3257-5	Woodruff Key	1
57	23-1650	Front Engine Support	1
58	302-5	Grease Fitting	1
59	21-0360	Metric Nut	4

Ref. No.	Part No.	Description	No. Used
60	21-0370	Lockwasher	4
61	21-1820	Stud — Belt Retainer	3
62	251-261	Bearing	1
63	32120-22	Snap Ring	1
64	21-2260	Engine Adapter Drive	1
65	21-0050	Engine	1
66	2412-3	Hose Clamp	1
67	2412-42	Hose Clamp	1
68	32128-17	Flange Nut	2
69	3290-134	Hex Hd. Machine Screw	2
70	21-2320	Engine Mount	1
71	24-2560	Screw	1
72	3253-3	Lockwasher	2
73	24-2490	Spacer	1
74	21-5920	Nut	1

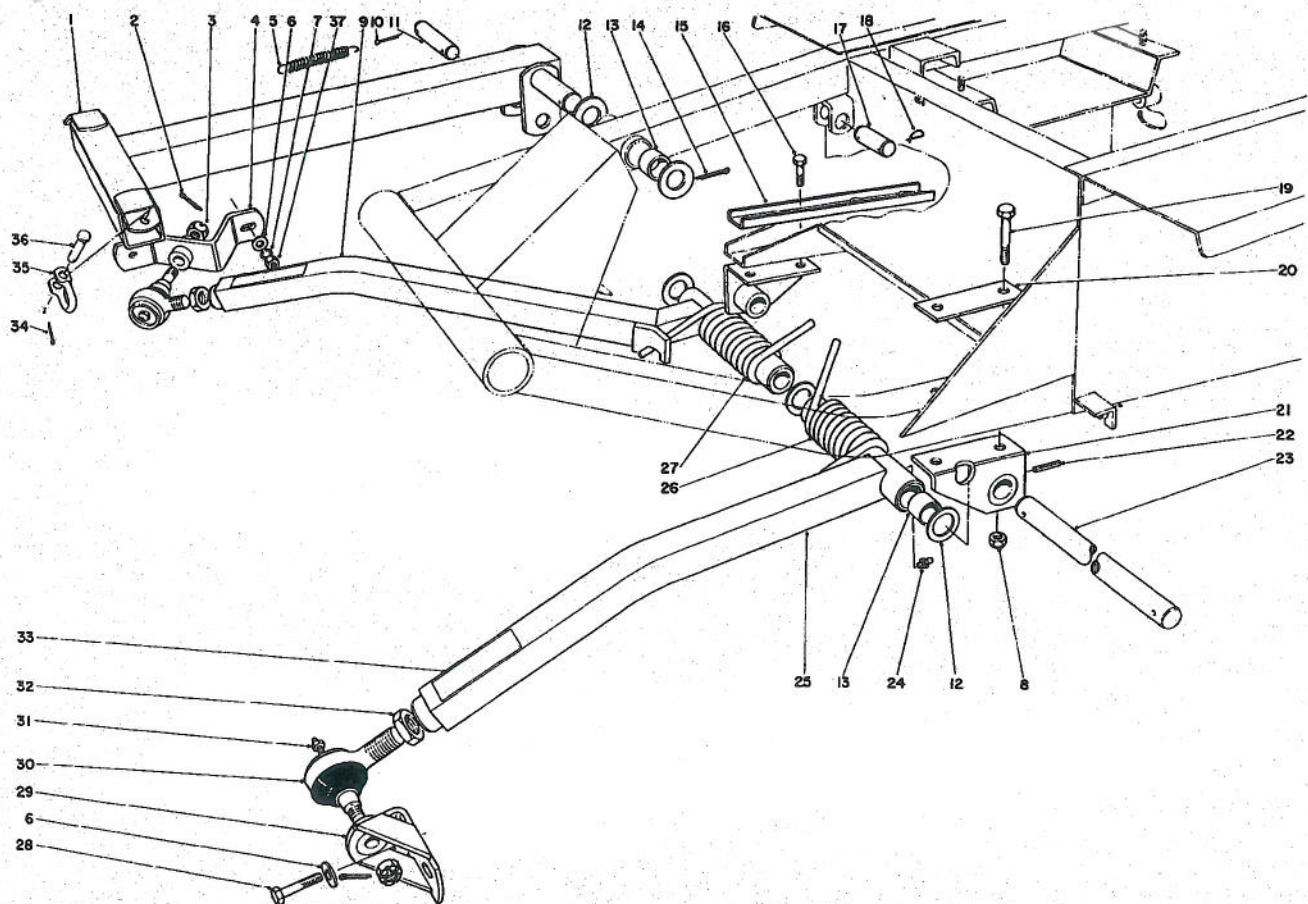
*Not Illustrated, Optional Equipment



GOVERNOR ASSEMBLY — 24-2480

Ref. No.	Part No.	Description	No. Used
1	22-7780	Pulley	1
2	32121-45	Roll Pin	1
3	22-7770	Oil Seal, Front Main	1
4	18-5540	Retainer, Shaft to Bearing	1
5	22-7760	Cover & Main Bearing	1
6	22-7680	Main Shaft & Yoke	1
7	22-7700	Pivot Pin, Flyweight	2
8	22-7690	Flyweight	2
9	22-7670	Thrust Sleeve	1
10	22-7640	Gasket, Cover to Body	1
11	18-5540	Retainer, Sleeve Stop	1
12	22-7620	Screw, Lever to Shaft	4
13	22-7610	Rocker Lever	1
14	24-2610	Body & Bearing Assembly	1
15	3255-10	Lockwasher	4
16	32104-10	Screw, Cover to Body	4

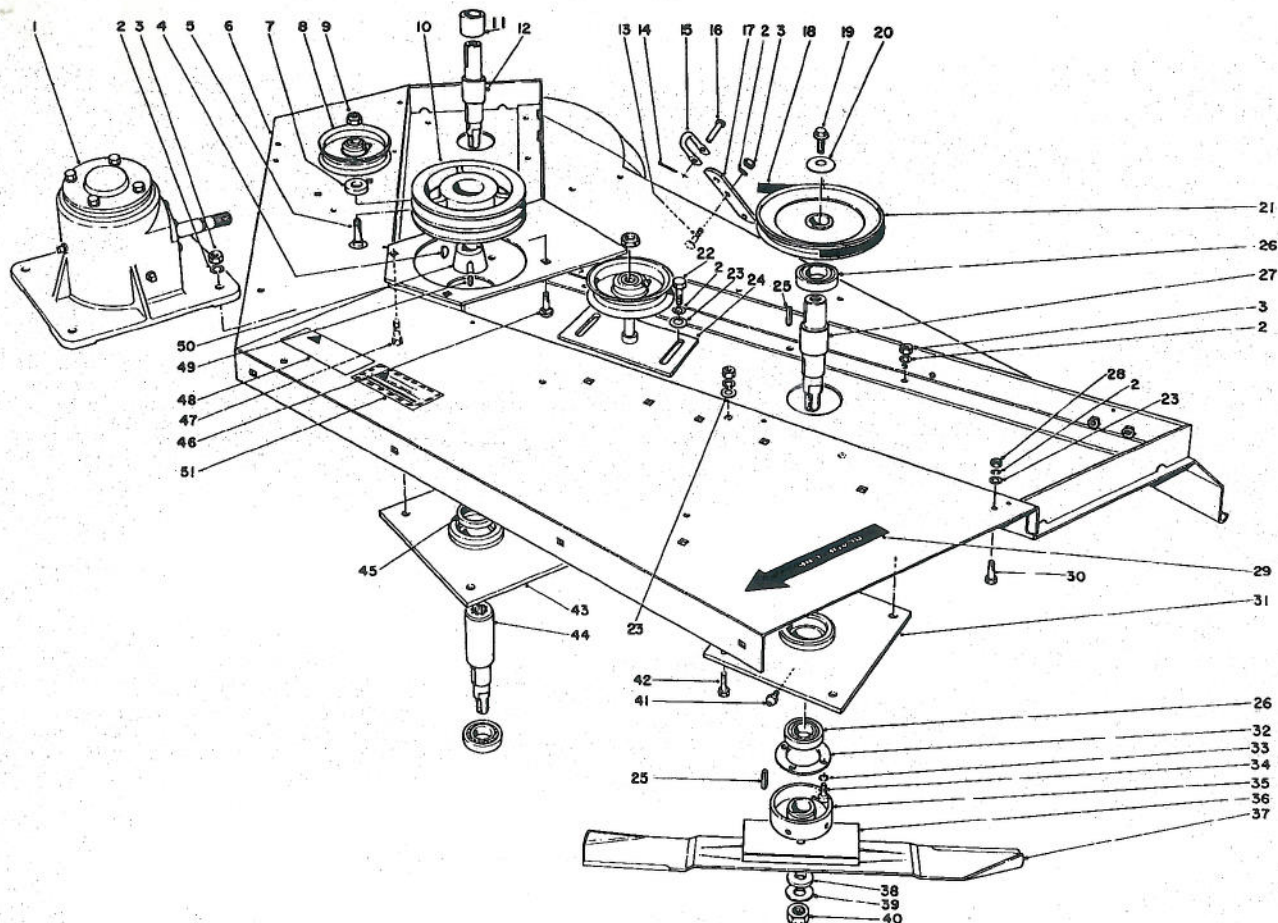
Ref. No.	Part No.	Description	No. Used
17	22-7570	Oil Seal, Rocker Shaft	1
18	22-7580	Rocker Shaft	1
19	32121-20	Pin, Lever to Shaft	1
20	24-2570	Throttle Lever Assembly	1
21	3219-1	Nut	2
22	22-7790	Speed Adjusting Lever	1
23	22-7800	Screw, Lever Pivot	1
24	22-7740	Eyebolt	1
25	22-7730	Spring, Governor	1
26	3219-14	Nut	2
27	3291-12	Screw, High Speed Stop	1
28	281-7	Pipe Plug, Oiler	2
29	24-2600	Bracket, Bumper Screw	1
30	24-2580	Spring	1
31	24-2590	Screw, Bumper	1
32	22-7710	Retainer, Pivot Pin	2



PUSH ARM ASSEMBLY

Ref. No.	Part No.	Description	No. Used
1	21-3100	Lift Arm	1
2	3272-11	Cotter Pin	2
3	32136-2	Nut	2
4	21-3020	Ball Joint Mount R.H.	1
5	21-1830	Spring	1
6	3256-25	Flat Washer	3
7	3253-6	Lockwasher	2
8	3296-48	Nut	4
9	21-2910	Push Arm R.H. (Incl. Ref. #13 & 24)	1
10	3272-24	Cotter Pin	1
11	5-3505	Pin	1
12	5-1754	Countershaft Washer	5
13	256-126	Bushing	6
14	3272-33	Cotter Pin	1
15	23-1950	Support Reinforcement	1
16	324-5	Capscrew	2
17	3-7292	Pin	1
18	5-3126	Spring Pin	3

Ref. No.	Part No.	Description	No. Used
19	324-12	Capscrew	2
20	21-3750	Plate Support	1
21	21-2860	Push Arm Bracket	2
22	32121-84	Roll Pin	2
23	21-2990	Shaft Pivot	1
24	302-33	Grease Fitting	2
25	21-2960	Push Arm L.H. (Incl. Ref. #13 & 24)	1
26	21-2900	Spring Torsion L.H.	1
27	21-2890	Spring Torsion R.H.	1
28	324-6	Capscrew	2
29	21-3050	Ball Joint Mount L.H.	1
30	21-0160	Ball Joint	2
31	302-2	Grease Fitting	2
32	21-3000	Jam Nut	2
33	21-3970	Decal Warning	2
34	3272-10	Cotter Pin	2
35	5-2942	Shackle	2
36	283-10	Pin	2
37	3217-8	Nut	2

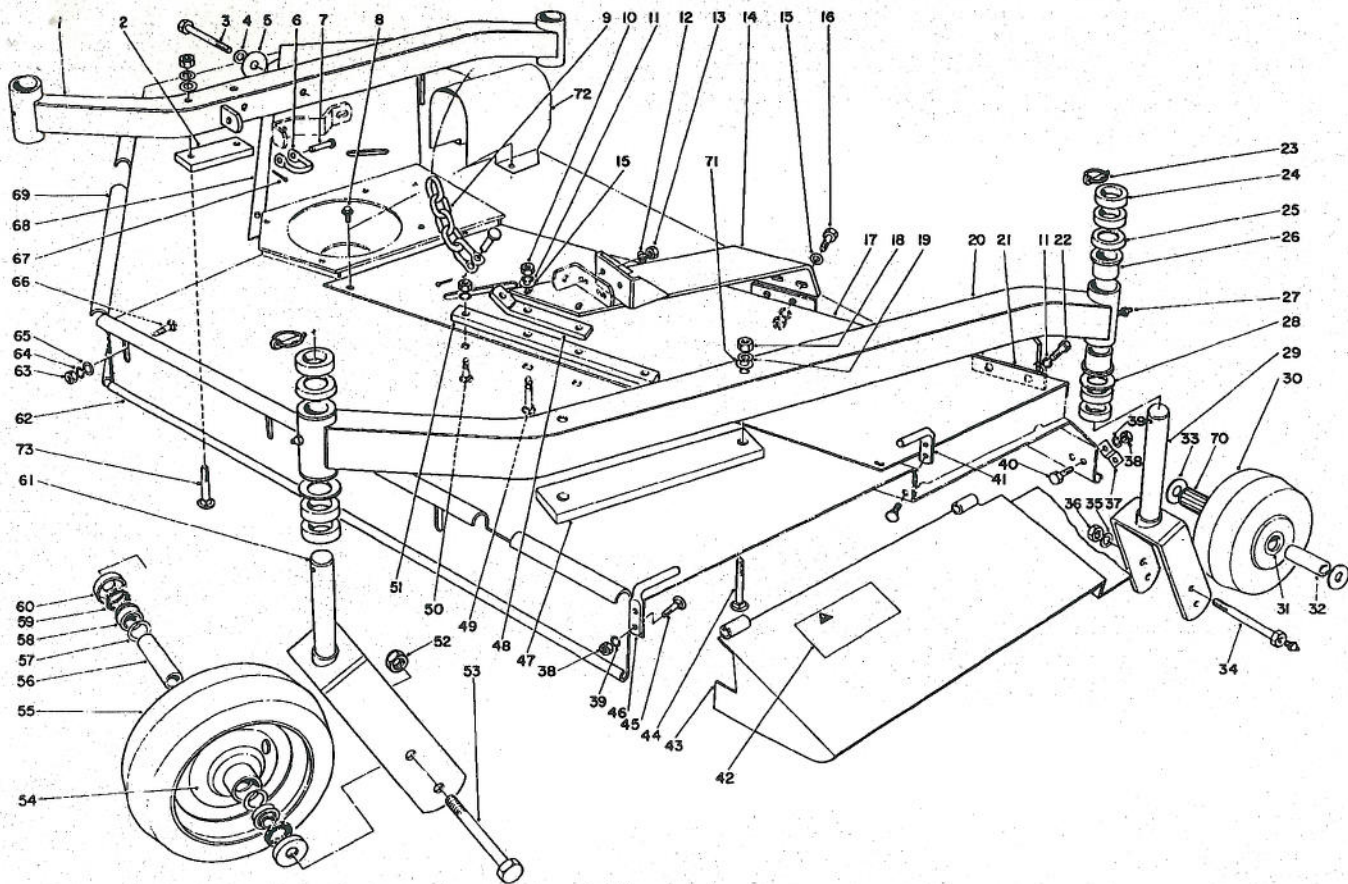


CUTTER DECK AND SPINDLE SHAFT ASSEMBLY

Ref. No.	Part No.	Description	No. Used
1	21-0010	Gear Box Assembly	1
2	3253-21	Lockwasher	23
3	3217-7	Full Nut	18
4	3257-5	Key Woodruff	1
5	3233-14	Carriage Bolt	1
6	21-0500	Cutter Deck	1
7	21-3720	Spacer Idler Pulley	1
8	21-3710	Idler Pulley	2
9	3296-45	Nut	2
10	21-0770	Pulley Deck	1
11	21-0860	Spacer — Pulley	1
12	23-2360	Spindle Shaft R.H.	1
13	3231-28	Carriage Bolt	2
14	3272-10	Cotter Pin	2
15	5-2942	Shackle	2
16	283-10	Pin	2
17	21-3770	Lift Strap — Rear Deck	1
18	21-0890	V - Belt	2
19	3234-6	Screw Hex Flange	2
20	21-0640	Waher Shakeproof	2
21	21-3990	Pulley	2
22	323-4	Capscrew	2
23	3256-24	Plain Washer	11
24	21-3660	Idler Base	1
25	21-0830	Key Spindle	5
26	251-257	Bearing	5

*Not Illustrated

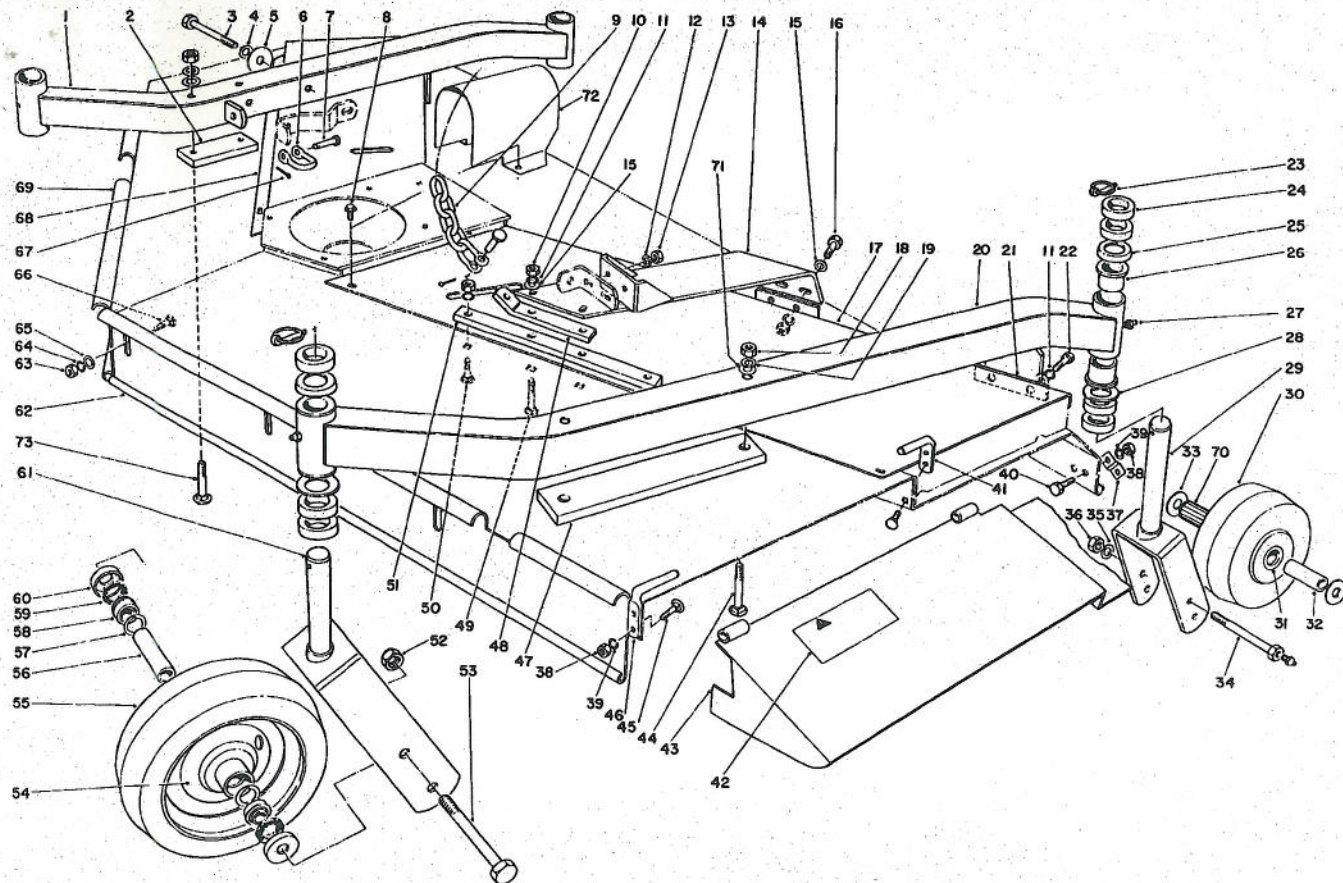
Ref. No.	Part No.	Description	No. Used
27	23-2390	Spindle Shaft L.H.	1
28	3296-39	Nut	3
29	21-3960	Decal Blade Line	1
30	323-6	Capscrew	3
31	21-0740	Spindle Housing — Ends	2
32	21-0820	Retainer Bearing	3
33	3253-3	Lockwasher	12
34	3274-15	Hex Socket Capscrew	12
35	21-0790	End Cap Spindle	3
36	23-2400	Retainer Blade	3
37	23-2410	Blade	3
38	21-0930	Washer Special	3
39	22-8520	Belleville Washer	3
40	17-0980	Nut Special	3
41	302-51	Grease Fitting	3
42	323-18	Capscrew	12
43	21-0650	Spindle Housing — Center	1
44	23-2380	Spline Shaft	1
45	253-133	Oil Seal	1
46	3231-4	Carriage Bolt	3
47	323-8	Capscrew	1
48	21-3940	Decal Caution	1
49	3247-4	Set Screw	2
50	21-0880	Bushing Taper Lock	1
51	25-0440	Decal Warning	1
*	6-0849	Loose Parts Bag	1



CUTTING UNIT CASTOR WHEEL AND DEFLECTOR ASSEMBLY

Ref. No.	Part No.	Description	No. Used
1	21-0900	Castor Arm R.H. (Incl. Ref.#26)	1
2	21-0960	Spacer — Castor Arm R.H.	1
3	324-12	Capscrew	2
4	3256-25	Flat Washer	2
5	3256-5	Flat Washer	2
6	5-2942	Shackle	2
7	283-10	Pin	2
8	32104-82	Screw Self-Tapping	12
9	21-3160	Lift Chain	3
10	3217-7	Full Nut	6
11	3253-21	Lockwasher	10
12	3253-6	Lockwasher	2
13	3217-8	Nut	2
14	21-1040	Ball Joint Mount	1
15	3256-24	Plain Washer	8
16	323-18	Capscrew	2
17	21-0720	Cover — Deck L.H.	1
18	3217-9	Nut	4
19	3253-7	Lockwasher	4
20	21-0940	Castor Arm L.H. (Incl. Ref.#26)	1
21	21-0480	Spacer Cover	3
22	323-7	Capscrew	4
23	3290-243	Pin	4

Ref. No.	Part No.	Description	No. Used
24	3-6783	Spacer	14
25	3-6782	Slinger	4
26	256-150	Bushing	8
27	302-5	Grease Zerk	4
28	3-6781	Washer	4
29	21-1000	Castor Fork Rear	2
30	21-3860	Wheel Castor	2
31	21-3840	Bearing Retainer Sealed	4
32	21-1030	Spanner Bushing	2
33	3256-44	Thrust Washer	4
34	321-3870	Axle	2
35	3254-4	Lockwasher	2
36	3220-5	Nut	2
37	21-3790	Strap Deflector	1
38	3217-5	Full Nut	6
39	3253-3	Lockwasher	6
40	321-3	Capscrew	2
41	21-3820	Pivot Pin — Deflector Rear	1
42	21-3910	Decal — Caution — Deflector Chute	1
43	21-3730	Deflector Chute	1
44	3233-12	Carriage Bolt	2
45	3229-1	Carriage Bolt	4

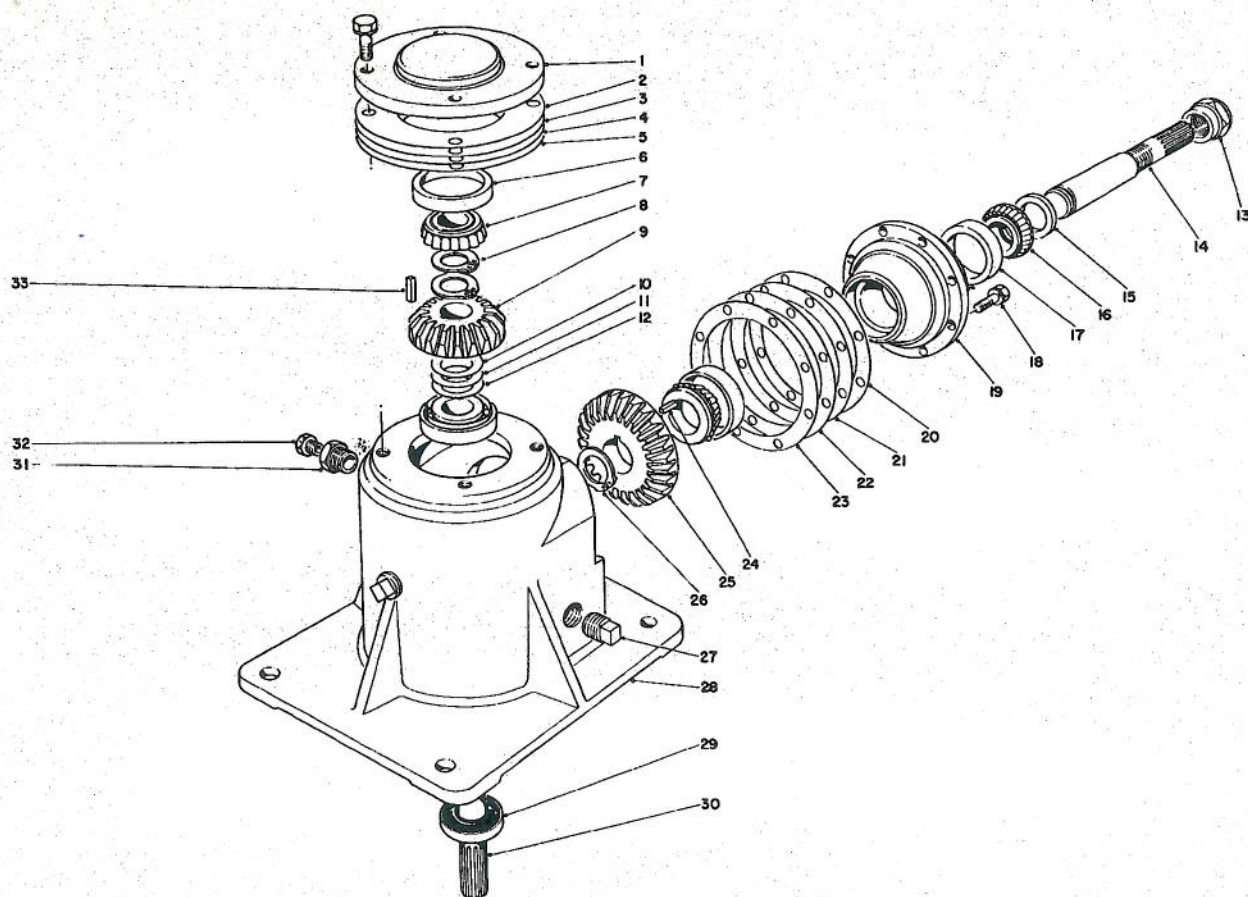


CUTTING UNIT CASTOR WHEEL AND DEFLECTOR ASSEMBLY (Continued)

Ref. No.	Part No.	Description	No. Used
46	21-3830	Pivot Pin Deflector — Front	1
47	21-0970	Spacer — Castor Arm L.H.	1
48	21-1080	Lift Strap L.H.	1
49	3231-29	Carriage Bolt	2
50	3231-28	Carriage Bolt	2
51	21-1070	Spacer — Ball Joint Support	1
52	3296-45	Nut	2
53	325-21	Capscrew	2
54	3-0139	Wheel & Tire	2
55	3-6774	Tire	2
56	3-6776	Spacer	2
57	3-6775	Washer	4
58	251-181	Bearing	4
59	3-6777	Felt Washer	4
60	3-6778	Axle Slinger	4

Ref. No.	Part No.	Description	No. Used
61	21-0980	Castor Fork	2
62	21-0710	Front Shield L.H.	1
63	3217-6	Full Nut	8
64	3253-4	Lockwasher	8
65	3256-3	Plain Washer	8
66	3230-1	Carriage Bolt	8
67	3272-10	Cotter Pin	2
68	21-0730	Cover — Deck R.H.	1
69	21-0700	Front Shield R.H.	1
70	21-3850	Roller Bearing	2
71	3256-6	Washer	4
72	21-9960	Shield	1
73	3233-15	Carriage Bolt	2
*	21-0040	Wheel Caster — Complete (Incl. Ref. # 31-36 & 70)	2

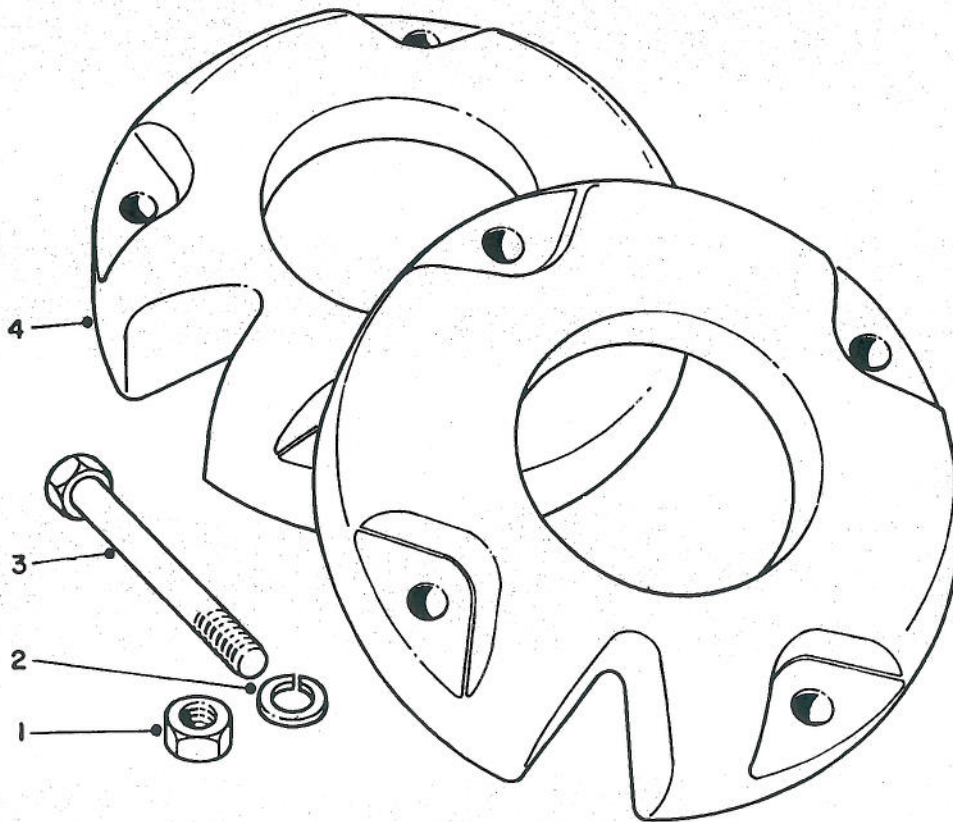
* Not Illustrated



GEAR CASE ASSEMBLY

Ref. No.	Part No.	Description	No. Used
1	21-6220	Cap	1
2	21-6210	Gasket .002 Thick	A/R
3	21-6200	Gasket .003 Thick	A/R
4	21-6190	Gasket .005 Thick	A/R
5	21-6180	Gasket .015 Thick	A/R
6	21-6120	Bearing Cup	2
7	21-6110	Bearing Cone	2
8	21-6170	Retaining Ring	2
9	21-6090	Pinion 20 Teeth	1
10	21-6150	Shim .002 Thick	A/R
11	21-6140	Shim .005 Thick	A/R
12	21-6130	Shim .010 Thick	A/R
13	22-4970	Sealing Nut	1
14	21-6340	Input Shaft	1
15	21-6310	Seal	1
16	254-94	Bearing Cone	2
17	254-72	Bearing Cup	2

Ref. No.	Part No.	Description	No. Used
18	32140-96	Sems Capscrew	12
19	21-6370	Hub	1
20	21-6300	Gasket .002 Thick	A/R
21	21-6290	Gasket .003 Thick	A/R
22	21-6280	Gasket .005 Thick	A/R
23	21-6270	Gasket .015 Thick	A/R
24	21-6060	Square Key	1
25	21-6100	Gear 29 Teeth	1
26	21-6050	Retaining Ring	1
27	281-2	Pipe Plug	2
28	21-6040	Housing	1
29	21-6080	Seal	1
30	21-6070	Output Shaft	1
31	21-6350	Reducer	1
32	302-34	Breather	1
33	21-6240	Square Key	1



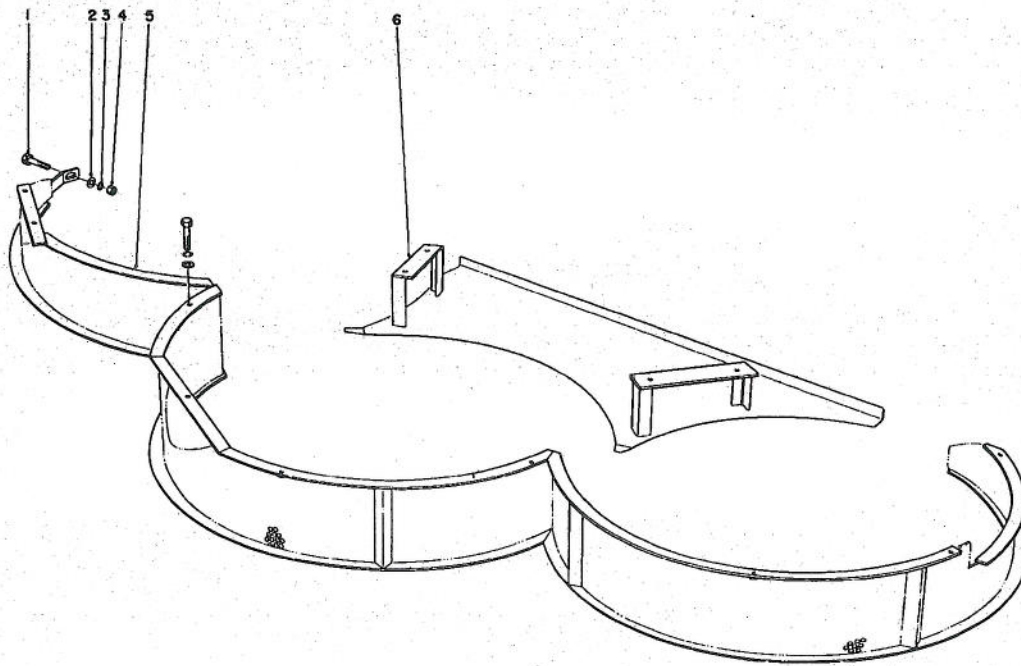
WHEEL WEIGHTS Model No. 11-0440 (Optional)

Ref. No.	Part No.	Description	No. Used
1	3218-5	Nut	8
2	3253-7	Lockwasher	8

Ref. No.	Part No.	Description	No. Used
3	325-26	Capscrew	8
4	7-2111	Wheel Weight	2

INSTALLATION INSTRUCTIONS

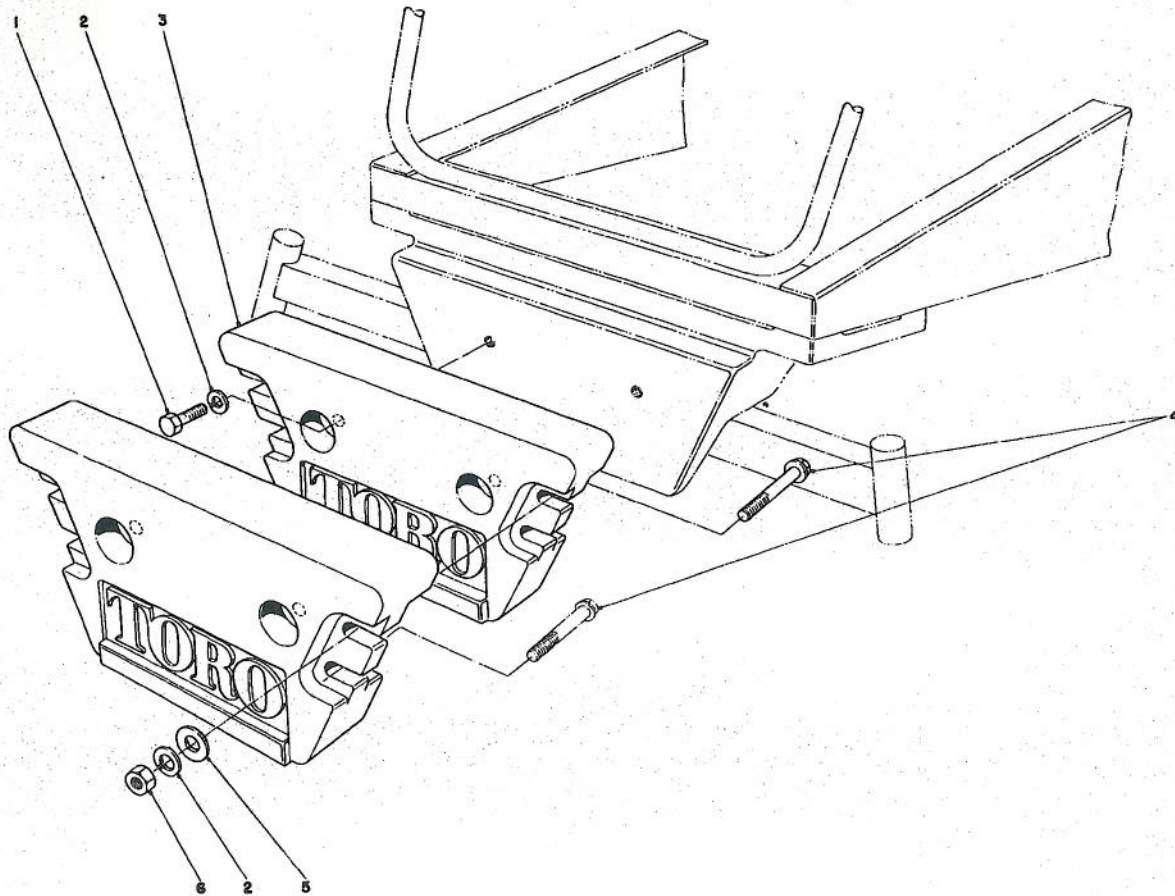
1. Install V-groove slot of wheel weight over the valve stem.
2. Be sure rounded edge of wheel weight is to the outside of the wheel.



MULCHER KIT Model No. 23-3990 (Optional)

Ref. No.	Part No.	Description	No. Used
1	323-6	Capscrew	14
2	3256-24	Flat Washer	14
3	3253-21	Lockwasher	14

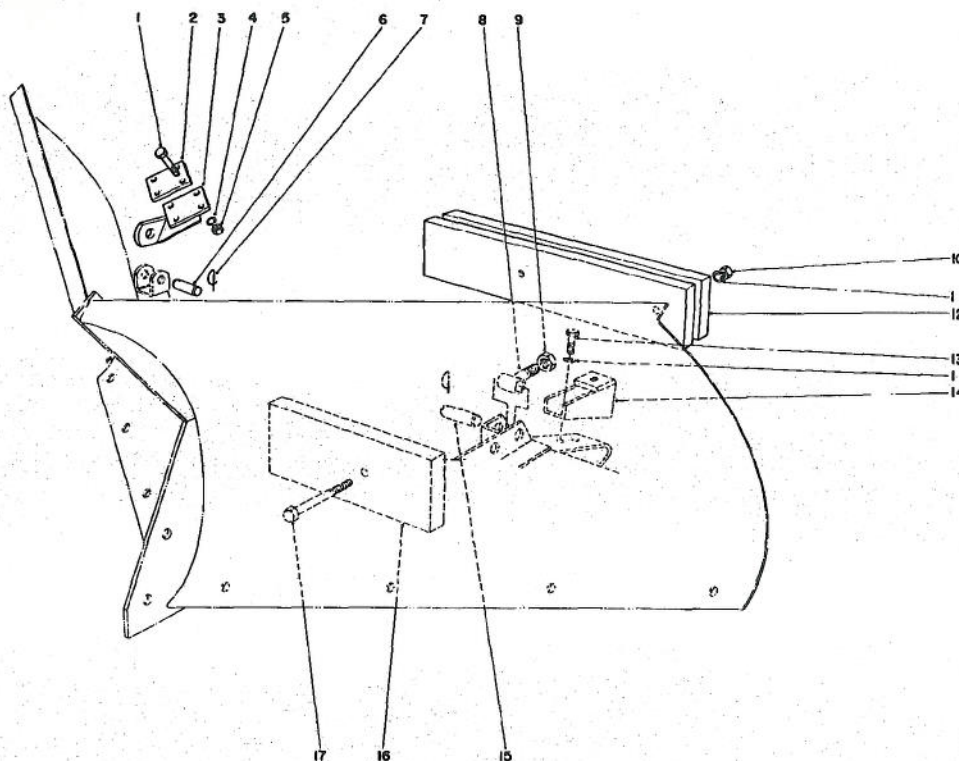
Ref. No.	Part No.	Description	No. Used
4	3296-39	Nut	14
5	23-4010	Mulcher Screen	1
6	23-4190	Bottom Rear Shield	1



REAR WEIGHT KIT Model No. 24-5780 (Optional)

Ref. No.	Part No.	Description	No. Used
1	325-6	Capscrew	2
2	3253-7	Lockwasher	6
3	24-5790	Rear Weight	2

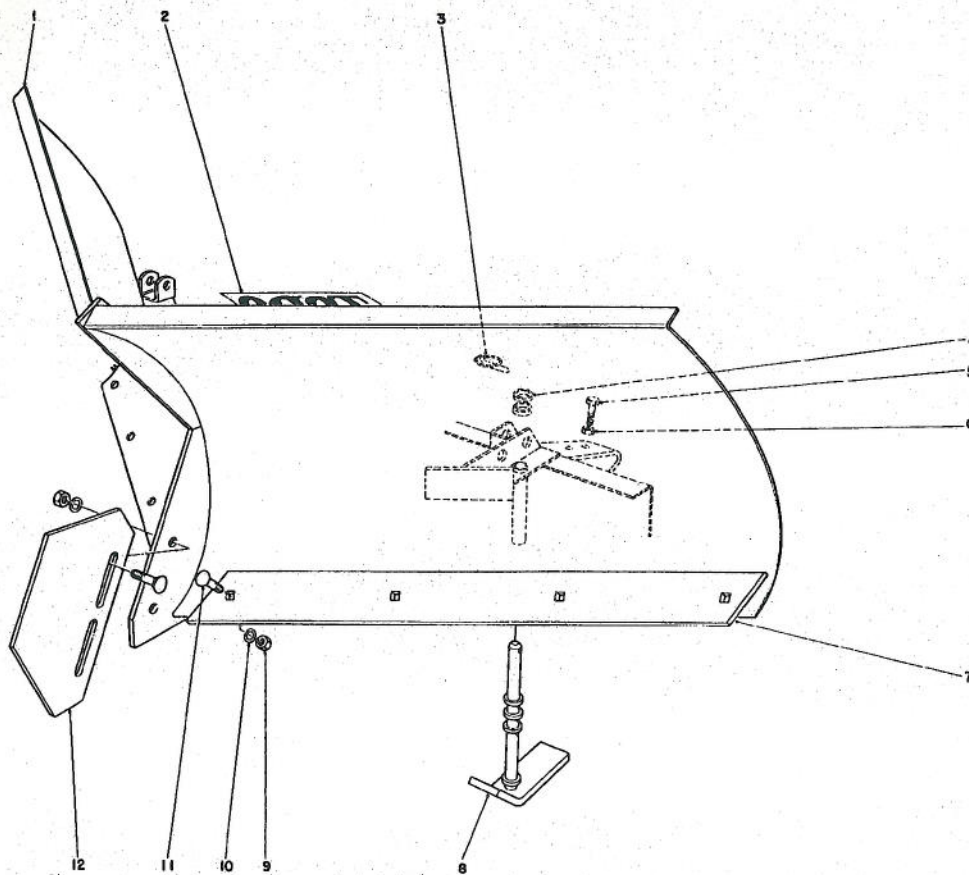
Ref. No.	Part No.	Description	No. Used
4	325-14	Capscrew	4
5	3256-26	Flat Washer	8
6	3217-9	Nut	4



V-PLOW INSTALLATION KIT Model No. 30757 (Optional)

Ref. No.	Part No.	Description	No. Used
1	323-14	Capscrew	4
2	24-2690	Clamp Plate	1
3	24-2680	Push Arm Bracket	1
4	3253-21	Lockwasher	4
5	3217-7	Nut	4
6	5-3505	Pin	1
7	5-3126	Spring Pin	4
8	23-9930	Push Pin	1

Ref. No.	Part No.	Description	No. Used
9	21-3000	Jam Nut	1
10	3217-9	Nut	2
11	3253-7	Lockwasher	4
12	24-2660	Outside Weight	2
13	325-4	Capscrew	2
14	24-2630	Stop	1
15	25-1350	Pin	1
16	24-2670	Inside Weight	2
17	325-22	Capscrew	2



V-PLOW Model No. 30750 (Optional)

Ref. No.	Part No.	Description	No. Used
1	23-9960	V-PLOW	1
2	18-2180	Decal	1
3	3290-243	Lynch Pin	2
4	20-4370	Spacer Tubes	10
5	325-6	Capscrew	1
6	3218-5	Jam Nut	1

Ref. No.	Part No.	Description	No. Used
7	24-5570	Scraper Blade	2
8	24-5540	Skid	2
9	3217-9	Nut	10
10	3253-7	Lockwasher	10
11	3233-2	Carriage Bolt	10
12	24-5530	Nose Skid	1