



Steel Cargo Bed Base

Workman® GTX Series Utility Vehicle

Model No. 07450

Installation Instructions

Installation

Loose Parts

Use the chart below to verify that all parts have been shipped.

Procedure	Description	Qty.	Use
1	No parts required	–	Prepare the machine.
2	No parts required	–	Remove an existing plastic cargo bed.
3	Lift bracket	1	Install the lift bracket.
	Flange-head bolt (3/8 x 2-1/2 inches)	2	
	Locknut (3/8 inch)	2	
4	Flat bed assembly	1	Install the flat bed assembly.
	Flange-head bolt (1/2 x 4-1/2 inches)	2	
	Locknut (1/2 inch)	2	
5	Gas spring	1	Install the gas spring.
	Clevis pin	2	
	Hairpin cotter	2	
	Spacer	4	

1

Preparing the Machine

No Parts Required

Procedure

1. Park the machine on a level surface.
2. Engage the parking brake.
3. Shut off the machine and remove the key.

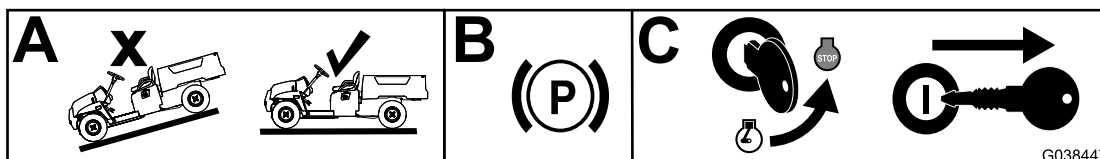


Figure 1

g038447



2

Removing an Existing Plastic Cargo Bed

No Parts Required

Procedure

If your machine is not equipped with a plastic cargo bed, you can skip to the next installation procedure.

1. Using an overhead hoist, raise the plastic cargo bed.
2. Remove the 3 flange-head bolts (5/16 x 3/4 inch) and prop rod U-bracket from the prop rod (Figure 2).

Note: Retain the hardware if you want to install the plastic cargo bed in the future.

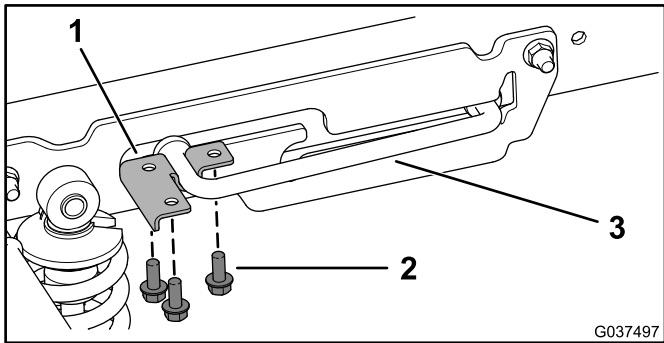
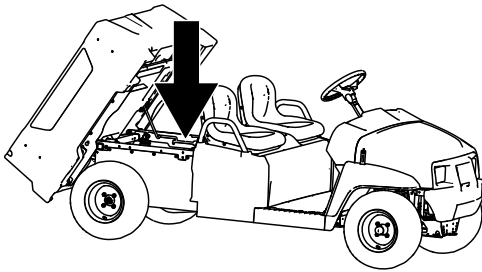


Figure 2

1. Prop rod U bracket
2. Flange-head screw (5/16 x 3/4 inch)
3. Prop rod

3. Slide the prop rod forward out of the detent slot and remove the prop rod (Figure 3).

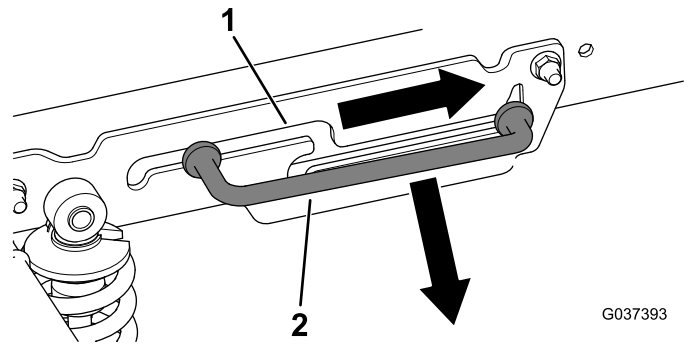


Figure 3

1. Detent slot
2. Prop rod

4. Using an overhead hoist, lower the cargo bed.
5. Remove the 2 pivot bolts (1/2 x 4-1/2 inches) and 2 locknuts (1/2 inch) from the pivot bracket located at the rear of the machine (Figure 4).

Note: Retain the hardware if you want to install the plastic cargo bed in the future.

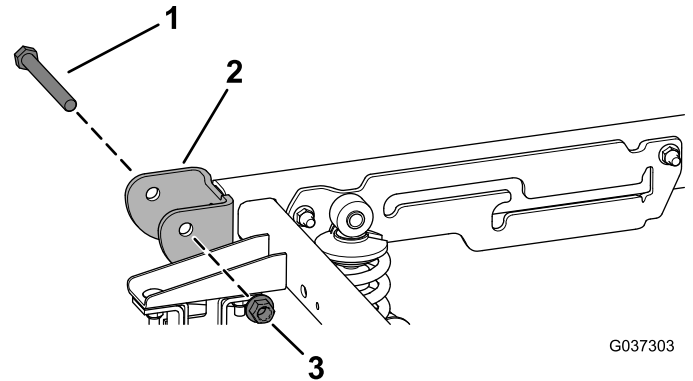


Figure 4

1. Pivot bolt (1/2 x 4-1/2 inches)
2. Pivot bracket
3. Locknut (1/2 inch)

6. Release the cargo-bed lever and raise the cargo bed using an overhead hoist.

3

Installing the Lift Bracket

Parts needed for this procedure:

1	Lift bracket
2	Flange-head bolt (3/8 x 2-1/2 inches)
2	Locknut (3/8 inch)

Procedure

1. Remove the existing flange-head bolt and locknut from the right stabilizer bracket and rear frame tube (Figure 5).

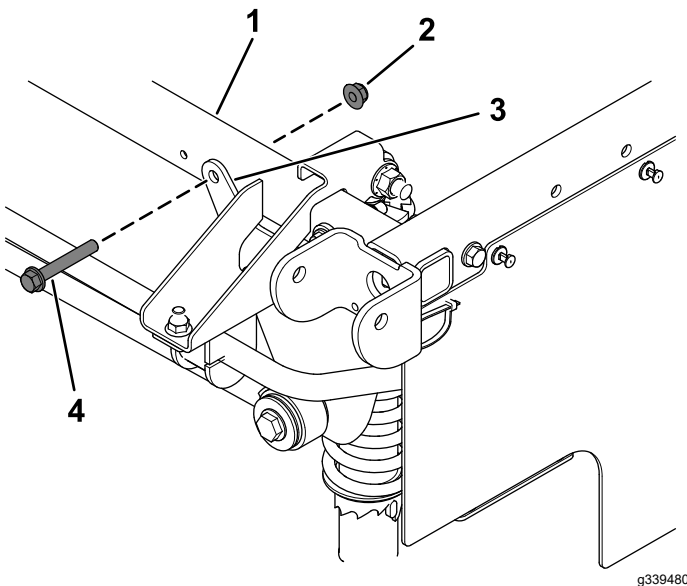


Figure 5

1. Rear frame tube
2. Existing locknut
3. Right stabilizer bracket
4. Existing flange-head bolt

2. Remove 1 plastic push rivet from the side panel (Figure 6).
Retain the plastic push rivet for later installation.
3. Pull down the corner of the side panel (Figure 6).

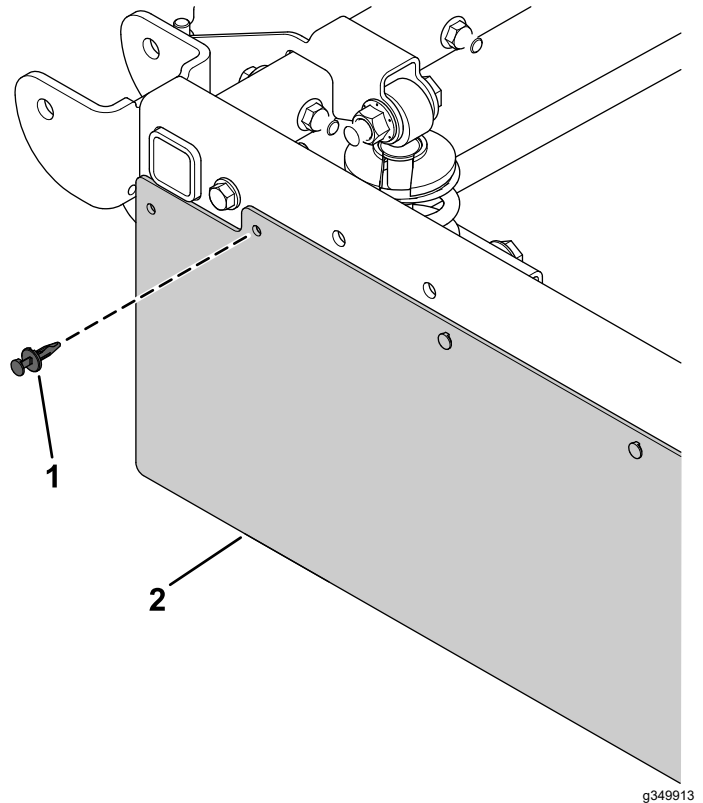


Figure 6

1. Plastic push rivet
2. Side panel

4. Secure the lift bracket to the rear and right frame tubes using the previously removed flange-head bolt and locknut and new 2 flange-head bolts (3/8 x 2-1/2 inches) and 2 locknuts (3/8 inch) as shown in [Figure 7](#).
5. Torque the previously removed flange-head bolt and new 2 flange-head bolts (3/8 x 2-1/2 inches) to 41 N·m (30 ft-lb).

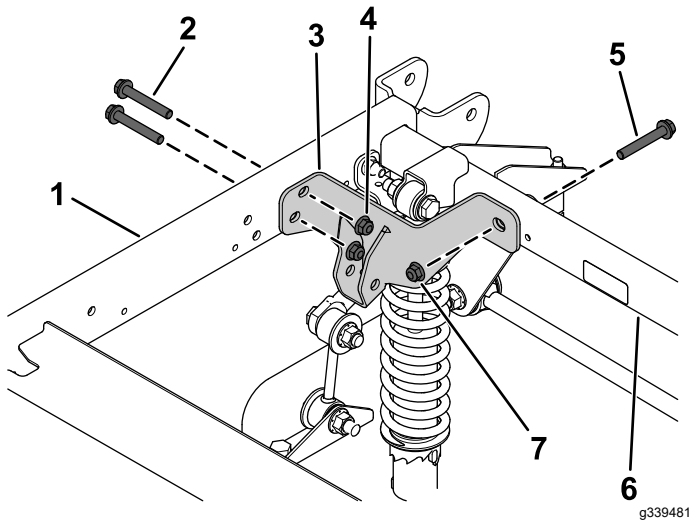


Figure 7

- | | |
|--|--|
| 1. Right frame tube | 5. Previously removed flange-head bolt |
| 2. Flange-head bolt (3/8 x 2-1/2 inches) | 6. Rear frame tube |
| 3. Lift bracket | 7. Previously removed locknut |
| 4. Locknut (3/8 inch) | |

-
6. Install the previously removed plastic push rivet ([Figure 6](#)).

4

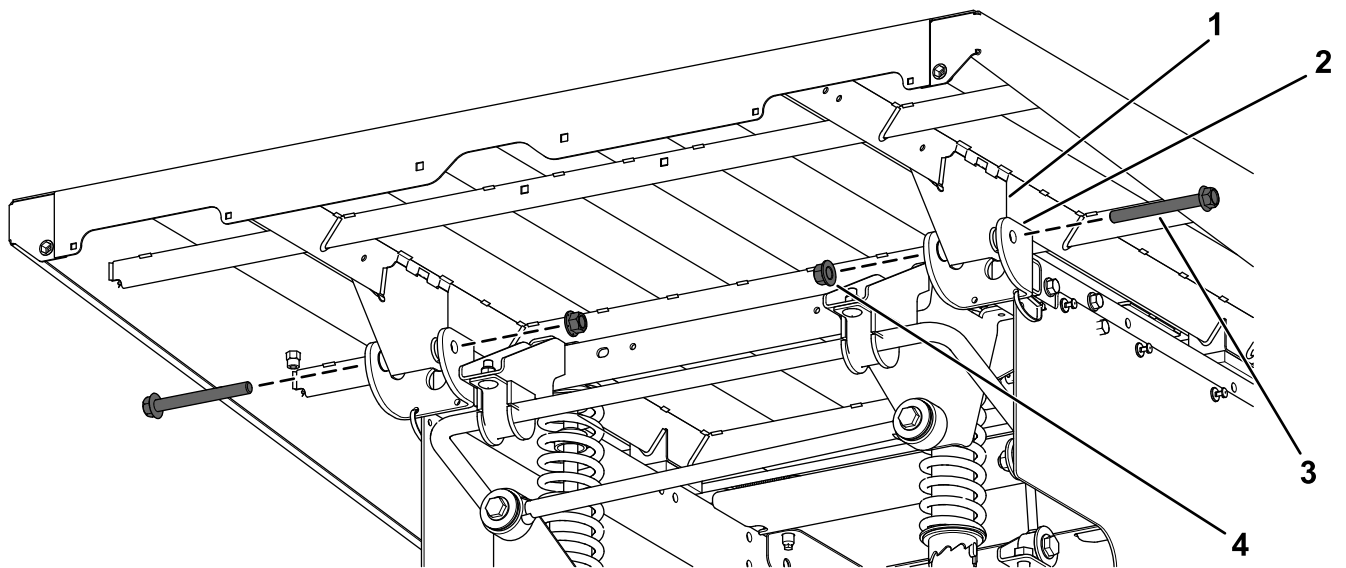
Installing the Flat Bed Assembly

Parts needed for this procedure:

1	Flat bed assembly
2	Flange-head bolt (1/2 x 4-1/2 inches)
2	Locknut (1/2 inch)

Procedure

1. Move the flat bed rearward until the pivot-bracket assembly is aligned over the rear-frame channel.
2. Carefully lower the flat bed until the holes in the pivot brackets align with the mounting holes in the flat bed supports ([Figure 8](#)).
3. Secure the flat bed assembly to the pivot brackets using the 2 flange-head bolts (1/2 x 4-1/2 inches) and 2 locknuts (1/2 inch) as shown in [Figure 8](#).
4. Torque the 2 locknuts (1/2 inch) to 16 to 19 N·m (140 to 170 in-lb).



g339482

Figure 8

- | | |
|---------------------|--|
| 1. Flat bed support | 3. Flange-head bolt (1/2 x 4-1/2 inches) |
| 2. Pivot bracket | 4. Locknut (1/2 inch) |

5

Installing the Gas Spring

Parts needed for this procedure:

1	Gas spring
2	Clevis pin
2	Hairpin cotter
4	Spacer

Procedure

1. Lift the flat bed assembly.
2. With the body side of the gas spring oriented toward the flat bed, secure the gas spring to the lift bracket using 2 clevis pins, 4 spacers, and 2 hairpin cotters ([Figure 9](#)).

Ensure that you use the inner set of holes on the flat bed when securing the gas spring as shown in [Figure 9](#).

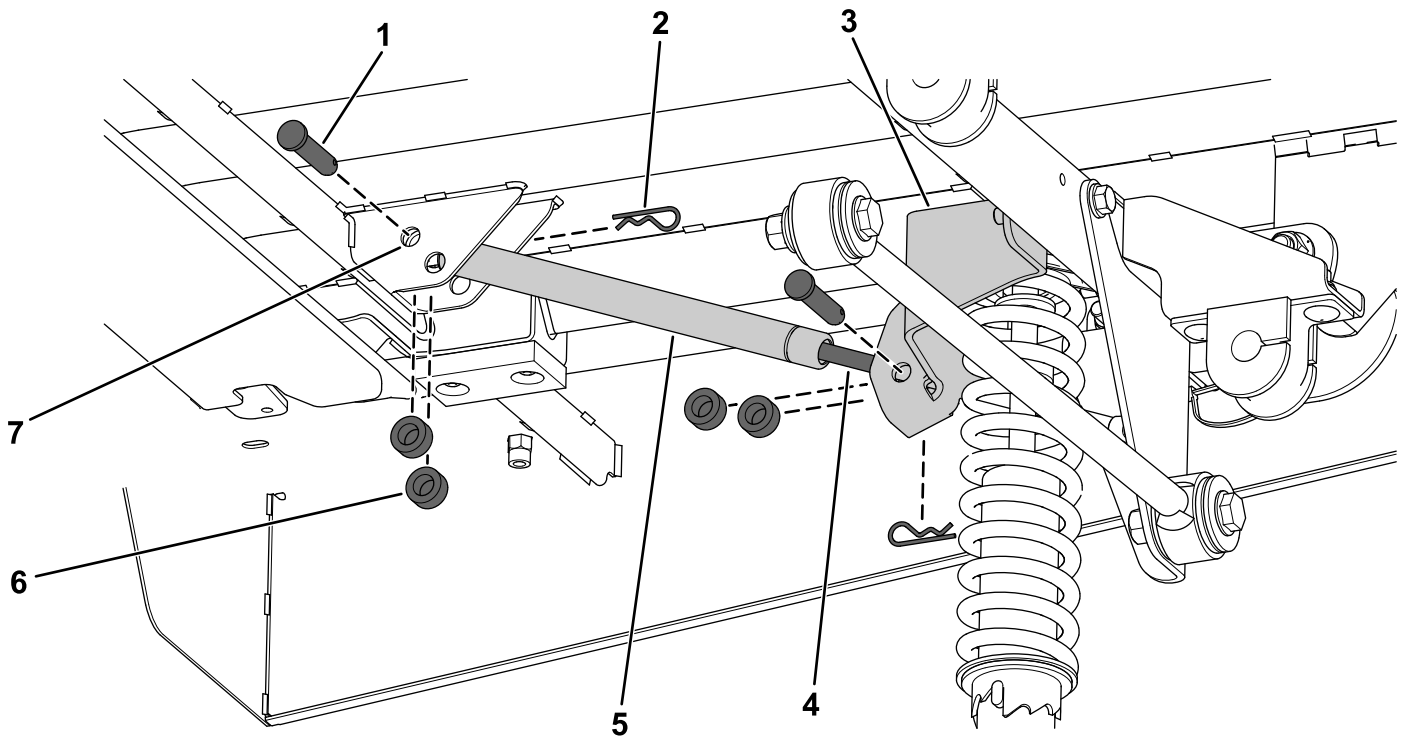


Figure 9

g340217

- | | | |
|-------------------|--------------------------------|-----------------------|
| 1. Clevis pin | 4. Rod side of the gas spring | 7. Inner set of holes |
| 2. Hairpin cotter | 5. Body side of the gas spring | |
| 3. Lift bracket | 6. Spacer | |

6

Adjusting the Cargo Bed Latches

No Parts Required

Procedure

If the cargo bed latch is out of adjustment, the cargo bed vibrates up and down as you drive the machine. You can adjust the latch posts to make the latches hold the cargo bed securely to the chassis.

1. Verify that the cargo bed is latching.

Note: If the cargo bed does not latch, the bed-latch striker is likely too low. If the cargo bed latches, but vibrates up and down as you drive, the bed-latch striker is likely too high.

2. Pull on the lever on the left, inside of the cargo bed toward you and lift the cargo bed up (Figure 10).

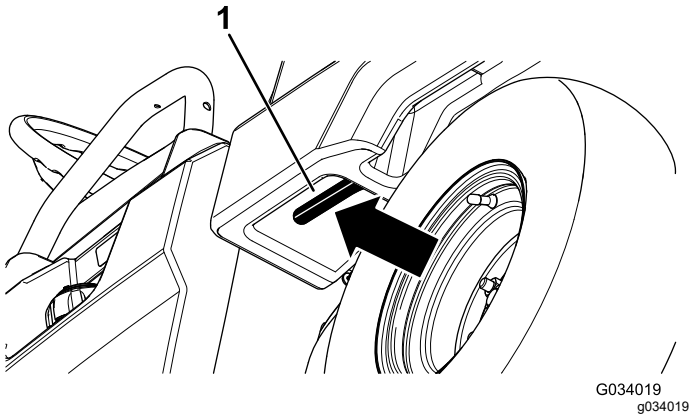


Figure 10

1. Cargo-bed lever

3. Loosen the 2 bolts on the bed-latch striker and move the striker up or down, depending on if the striker is too high or too low (Figure 11).

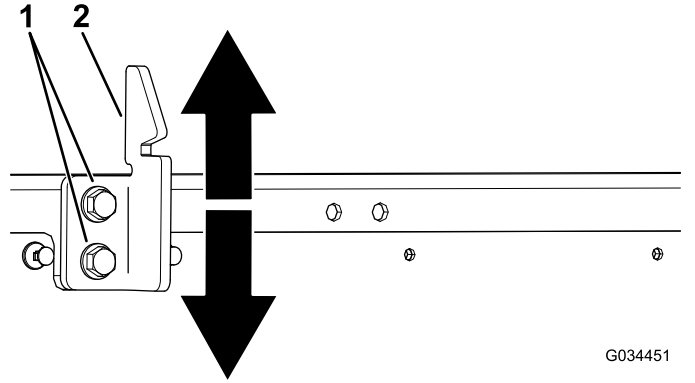


Figure 11

1. Bolt
2. Bed-latch striker

4. Tighten the 2 bolts on the bed-latch striker (Figure 11).
5. Verify that the adjustment is correct by latching the cargo bed several times.



Count on it.