



Form No. 3426-239 Rev C

Count on it.

Parts Catalog

Brush Cutter

TXL 2000 Tool Carrier

Model No. 22534—Serial No. 318000001 and Up



Ordering Replacement Parts

To order replacement parts, please supply the part number, the quantity, and the description of each part desired.

Understanding Reference Numbers

Each identified part in an illustration has a reference number. The reference number for a part also appears in the parts list, along with other information about the part.

This catalog uses two special reference number formats, one to indicate parts in a service assembly and another to indicate the quantity of a given part in an illustration.

Service Assembly Reference Numbers

Parts in service assemblies have reference numbers in the form a:b. The a represents the reference number of the entire service assembly and the b represents a sequential number unique to each part within the service assembly.

For example, a wheel assembly might be identified by reference number 6, the tire by 6:1, the valve by 6:2, and the wheel by 6:3. When you order the assembly identified by reference number 6, you receive all parts identified by reference numbers 6:1, 6:2, and 6:3. However, you may also order any part individually. Reference numbers of this type appear in illustration and in parts lists.

Reference Numbers Indicating Quantity

In an illustration, if a reference number indicates more than one part, the reference number has the form nX y. The n represents the quantity of the part, the X is the multiplication symbol, and the y represents the reference number.

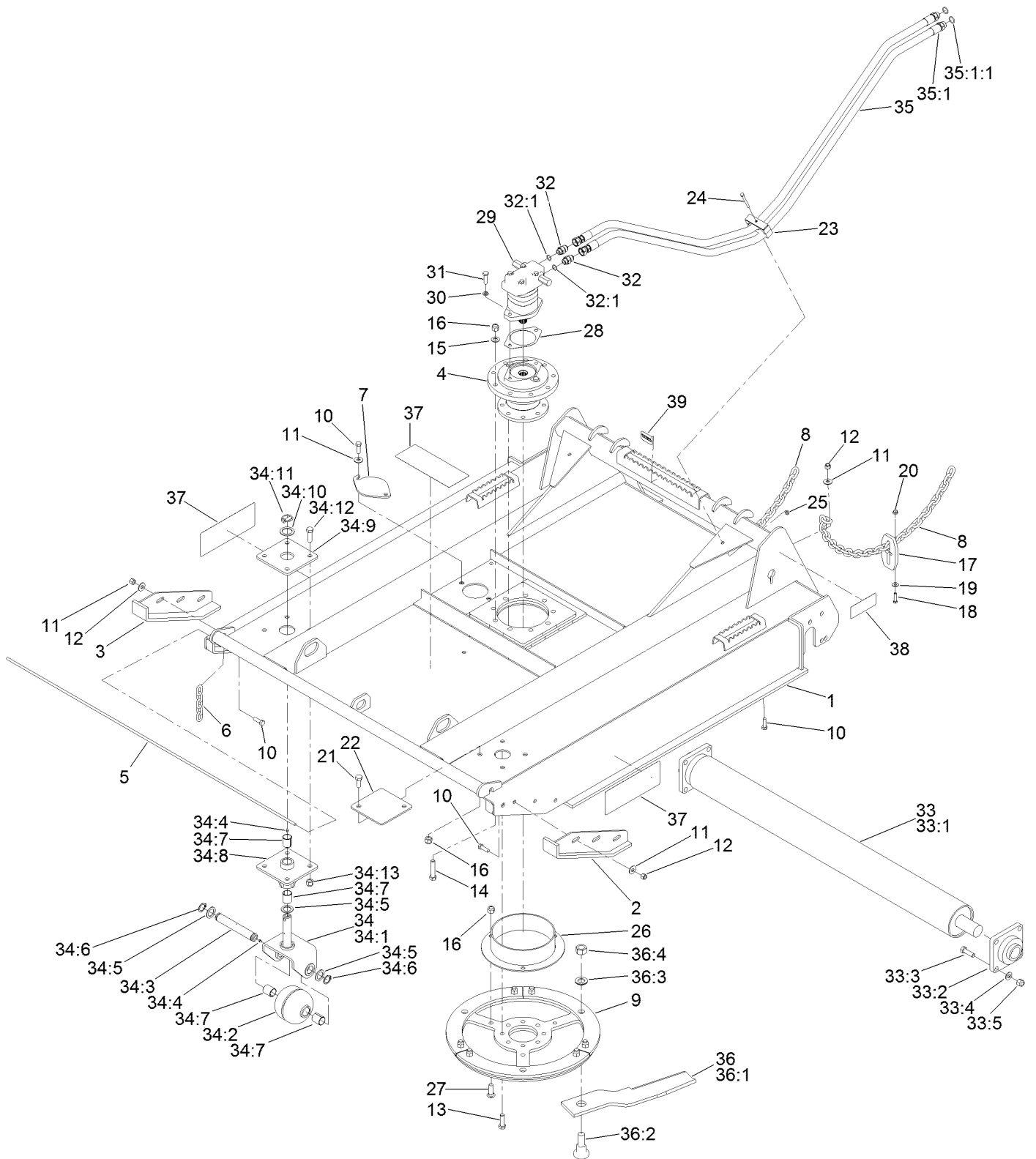
For example, in an illustration, the reference number 2X 37 means that two of the parts identified by reference number 37 are indicated.

Contents

Brush Cutter Assembly 4

Blade Carrier Assembly No. 138-4324 6

Brush Cutter Assembly

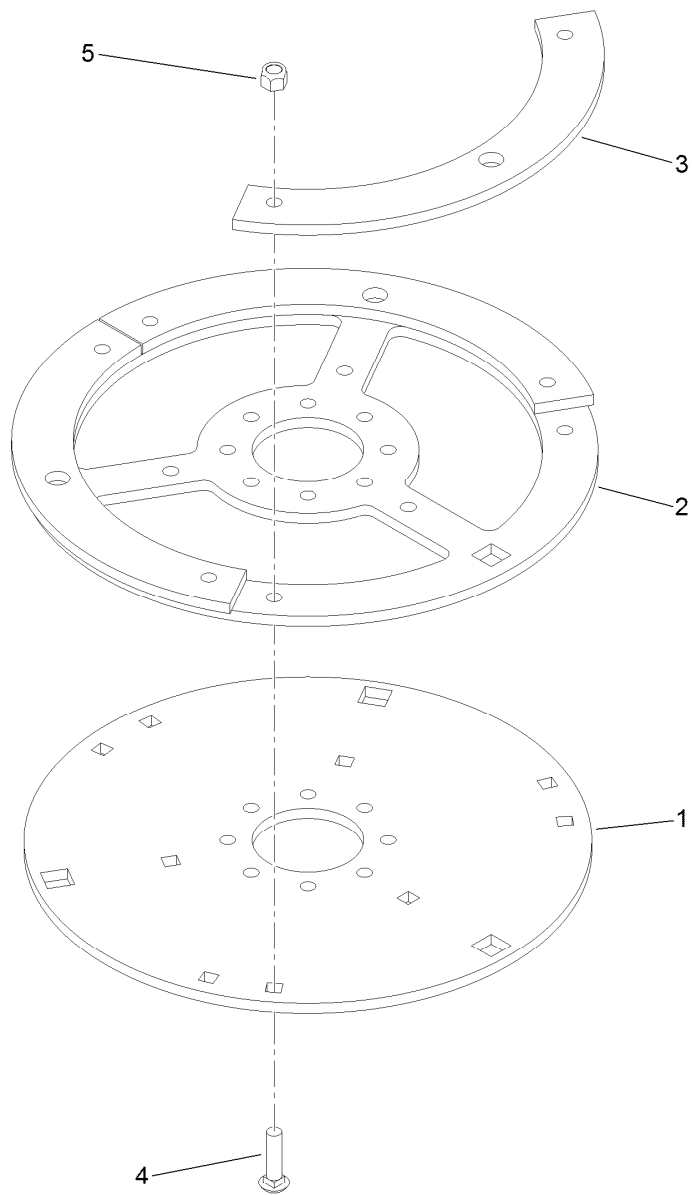


Brush Cutter Assembly (continued)

<i>Ref.</i>	<i>Part Number</i>	<i>Qty.</i>	<i>Description</i>	<i>Ref.</i>	<i>Part Number</i>	<i>Qty.</i>	<i>Description</i>
1		1	Deck ASM ▲	32:1	237-80	1	O-Ring
2	138-4313	1	Plate-Skid, LH	33	138-4337	1	Brush Cutter Roller ASM
3	138-4314	1	Plate-Skid, RH	33:1	138-4336	1	Roller ASM
4	138-4315	1	Adapter-Bearing	33:2	137-9016	2	Bearing-Flanged
5	138-4317	1	Rod-Support, Chain	33:3	327-6	8	Screw-HH
6	138-4316	48	Chain-Link	33:4	3256-27	8	Washer-Flat
7	138-4318	1	Cover-Access, Blade Bolt	33:5	3296-53	8	Nut-Lock, NI
8	138-4319	2	Chain-Limiting, Lift	34	138-4340	1	Brush Cutter Caster ASM ■
9	138-4324	1	Blade Carrier Assembly	34:1	138-4339	1	Swivel-Caster
10	325-6	10	Screw-HH	34:2	138-4338	1	Wheel-Caster
11	3256-6	10	Washer-Flat	34:3	137-3895	1	Pin-Pivot
12	3296-23	8	Nut-Lock, NI	34:4	137-9002	2	Fitting-Zerk
13	327-6	8	Screw-HH	34:5	110-8195	3	Washer-Steering
14	104-5895	9	Screw-HH	34:6	32151-77	2	Ring-Retaining, External
15	3256-27	9	Washer-Flat	34:7	137-4896	4	Bushing
16	3296-53	16	Nut-Lock, NI	34:8	138-4341	1	Mount-Lower, Caster
17	138-4330	2	Plate-Limiting, Lift	34:9	139-1417	1	Plate-Caster
18	323-8	2	Screw-HH	34:10	137-4898	1	Washer
19	3256-4	2	Washer-Flat	34:11	283-71	1	Pin-Lynch
20	104-8301	2	Nut-HF, NI	34:12	327-6	4	Screw-HH
21	327-4	4	Screw-HH	34:13	3296-53	4	Nut-Lock, NI
22	138-4332	2	Plate-Cover, Caster	35	138-5193	2	HYD Hose ASM
23	137-8969	1	Clamp-Hose	35:1		1	Fitting-Straight ▲
24	322-20	1	Screw-HH	35:1:1	237-81	1	O-Ring
25	104-8300	1	Nut-HF, NI	36	138-5237	1	60In Rotary Blade Kit
26	138-4333	1	Guard-Spindle	36:1	138-4325	3	Blade
27	HDW05603	3	Bolt-CARR	36:2	138-4326	3	Bolt-Blade
28	138-4334	1	Gasket	36:3	138-4327	3	Washer-Lock
29	138-4329	1	Hydraulic Motor ASM	36:4	138-4328	3	Nut-Lock
29:1	139-1406	1	Seal Kit ●	37	138-0538	3	Decal-Danger
30	3253-7	2	Washer-Lock	38	125-6128	1	Decal-Warning
31	121-1524	2	Screw-HH	39	98-3206	1	Decal
32	01-201-3290	2	Fitting-Straight				

● Not illustrated
▲ Not serviced separately

■ Optional Equipment



Blade Carrier Assembly No. 138-4324

Ref.	Part Number	Qty.	Description
1	138-4321	1	Plate-Lower
2	138-4322	1	Plate-Middle
3	138-4323	3	Plate-Upper
4	HDW05611	6	Bolt, Carriage, 5/8-11X2-1/2 GR5 Blk Zn
5	3296-53	6	Nut-Lock, NI

Notes:



Count on it.