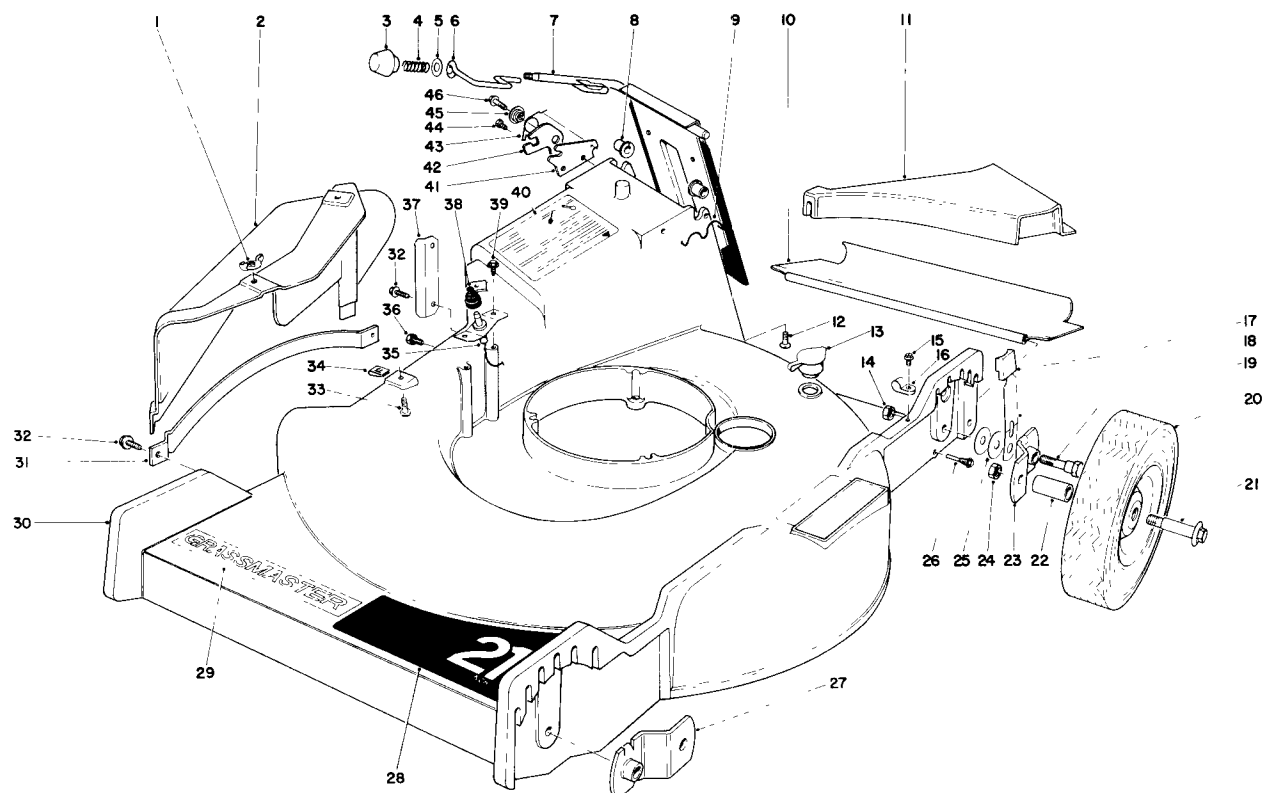


**TORO®**

MODEL NO. 20440-500001 &amp; UP

**PARTS  
CATALOG****21" H.P. GRASSMASTER<sup>†</sup> FINGERTIP****HOUSING ASSEMBLY**

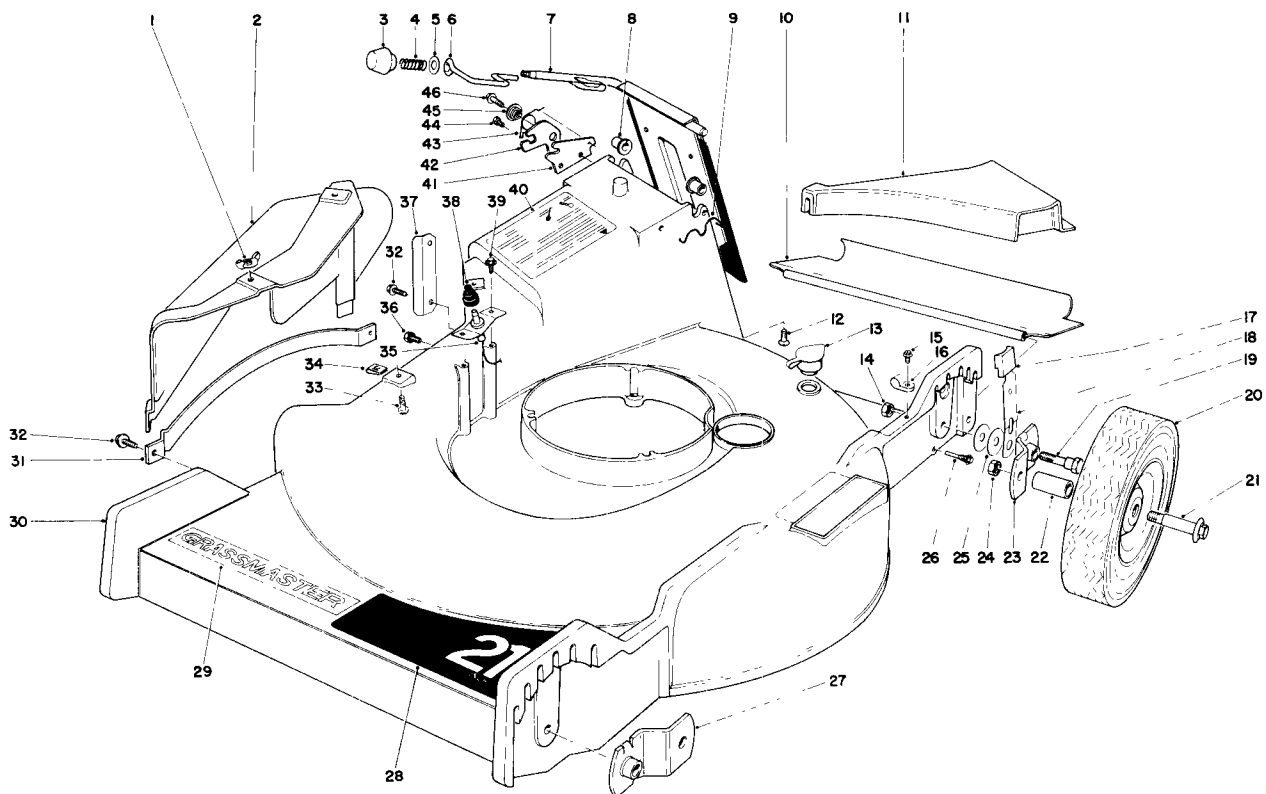
Ref. No.	Part No.	Description	No. Used
1	32103-14	Wing Nut	2
2	23-0180	Deflector	1
3	233-37	Knob	1
4	23-0920	Spring Compression	1
5	23-1120	Washer	1
6	23-0940	Latch Door	1
7	23-0990	Door Handle	1
8	23-0880	Bushing	2
9	23-0200	Door Retainer	1
10	23-0560	Rear Safety Shield	1
11	23-0360	Insert Rear	1
12	32144-17	Screw Flat Head	2
13	6-4500	Washout Plug	1
14	32146-5	Locknut	4

Ref. No.	Part No.	Description	No. Used
15	12-5450	Screw Special	1
16	2412-51	Cable Clamp	1
17	8-4220	Knob Arm	4
18	23-0400	Spring Arm	4
19	25-3440	Pivot Screw	4
20	17-4120	Wheel & Tire (Incl. Ref. # 22)	4
21	3-2652	Wheel Bolt	4
22	3-2664	Bushing - Wheel	4
23	24-7710	Pivot Arm	2
24	32146-12	Locknut	4
25	5-4460	Pivot Washer	8
26	8-6160	Pivot Screw	2
27	23-9120	Pivot Arm	2
28	23-0870	Decal - Front Housing	1

†Exclusive Trade Name of The Toro Company.

Copyright 1974 by  
**The Toro Company**  
 Bloomington, Minnesota 55420 U.S.A.

Price \$1.00

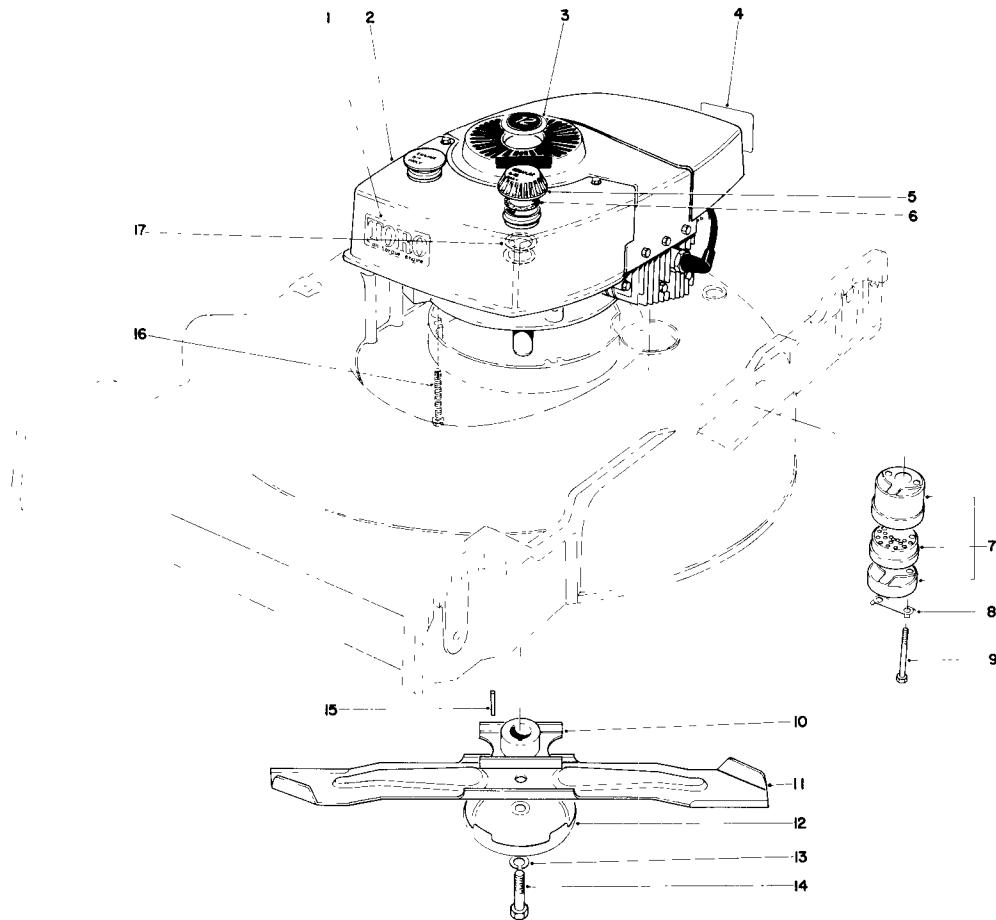


## HOUSING ASSEMBLY (Continued)

Ref. No.	Part No.	Description	No. Used
29	23-0930	Decal - Grassmaster	1
30	6-1799	Housing	1
31	23-0210	Bar - Safety	1
32	12-3270	Screw - Special	3
33	3290-133	Screw Round Head	2
34	3290-380	Speed Nut	2
35	23-0150	Deflector Switch	1
		(Incl. Ref. # 38)	
36	32104-114	Screw Self Tapping	1
37	23-0140	Clip - Retaining	1

Ref. No.	Part No.	Description	No. Used
38	12-4930	Boot Switch	1
39	32144-12	Screw	2
40	23-1280	Decal - Caution	1
41	23-1040	Plate - Latch	1
42	23-1190	Latch Safety	1
43	23-1200	Spring Torsion	1
44	32104-17	Screw	1
45	23-1180	Spacer Latch	1
46	11-9760	Screw Thread Forming	1
*	24-8740	Loose Parts Bag	1

\*Not Illustrated

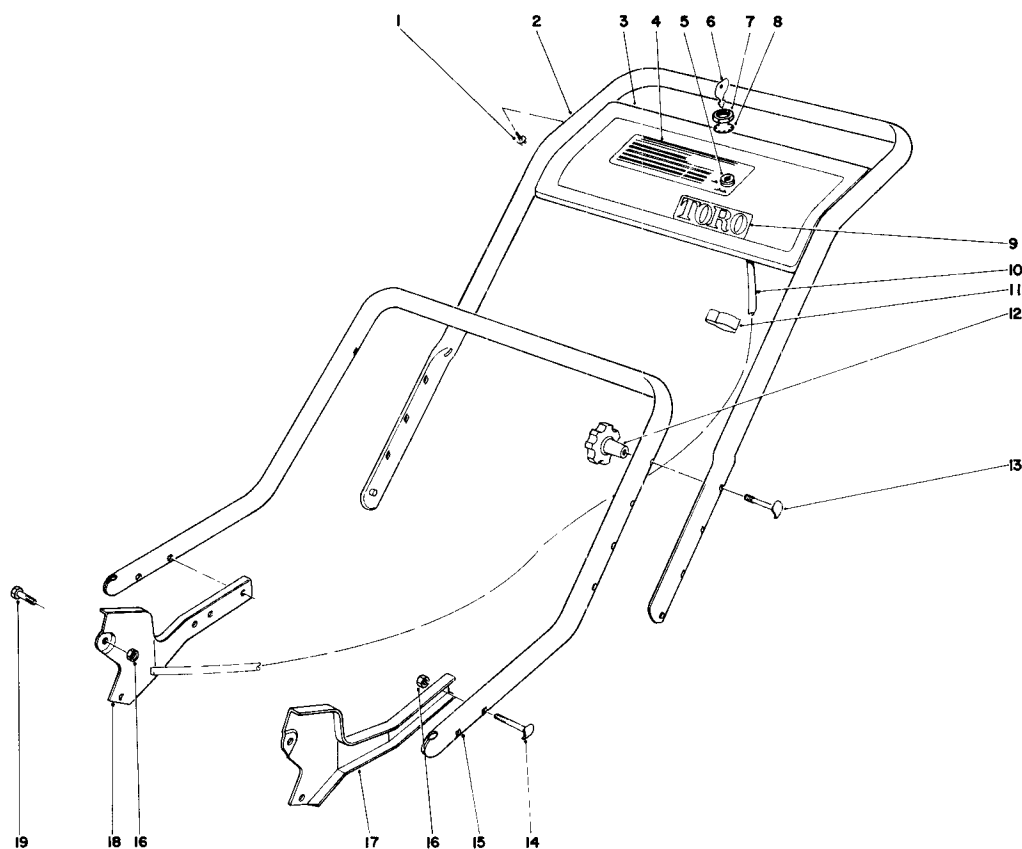


## ENGINE ASSEMBLY

Ref. No.	Part No.	Description	No. Used
1	23-1260	Decal - High Torque	1
2	221-486	Engine (TNT120-12003)	1
*	221-465	Engine (TNT120-12002)	1
3	23-0600	Plug Button	1
4	20-2710	Decal - Maintenance	1
5	20-2860	Gas Cap Assy. (Incl. Ref. #6 & 17)	1
6	2210-144	Gasket	2
7	5-4769	Muffler (Incl. Ref. # 8 & 9)	1
8	3-5094	Locking Clip	1
9	321-20	Screw Hex Hd.	2

Ref. No.	Part No.	Description	No. Used
10	24-6560	Blade Retainer (TNT120-12003)	1
*	23-0110	Blade Retainer (TNT120-12002)	1
11	23-0070	Blade	1
12	8-4240	Anti - Scalp Cup	1
13	3253-22	Lockwasher	1
14	23-0080	Screw Blade	1
15	6-8590	Key	1
16	11-0580	Screw	3
17	2210-143	Baffle	1

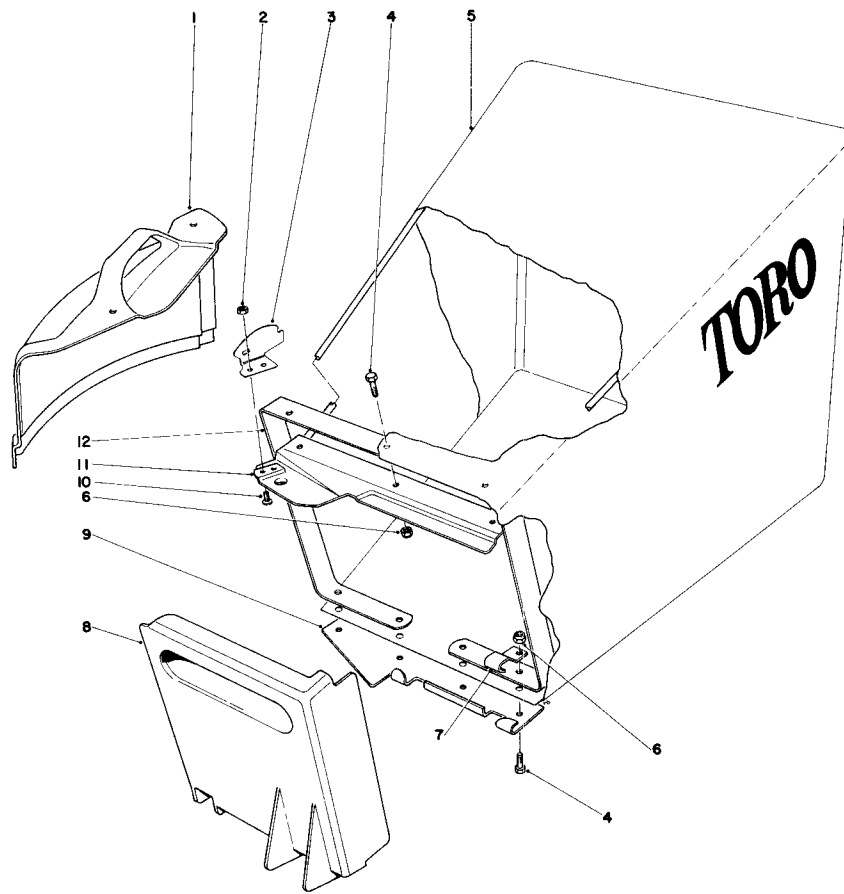
\*Not Illustrated



## HANDLE ASSEMBLY

Ref. No.	Part No.	Description	No. Used
1	32104-76	Screw	4
2	23-0580	Upper Handle	1
3	23-0490	Control Plate	1
4	23-0760	Decal - Control Plate	1
5	23-0650	Switch	1
6	218-412	Key (Set of 2)	1
7	218-461	Hex Nut	1
8	3254-5	Lockwasher	1
9	20-4690	Decal - Toro	1
10	23-0820	Harness Wiring	1

Ref. No.	Part No.	Description	No. Used
11	218-465	Clip Conduit	2
12	19-4050	Knob - Handle Release	2
13	6-6330	Screw - Handle	2
14	23-9140	Screw - Handle	4
15	25-2230	Lower Handle	1
16	32146-5	Nut	8
17	25-2220	Latch Handle L.H.	1
18	25-2210	Latch Handle R.H.	1
19	322-4	Hex Hd. Capscrew	4

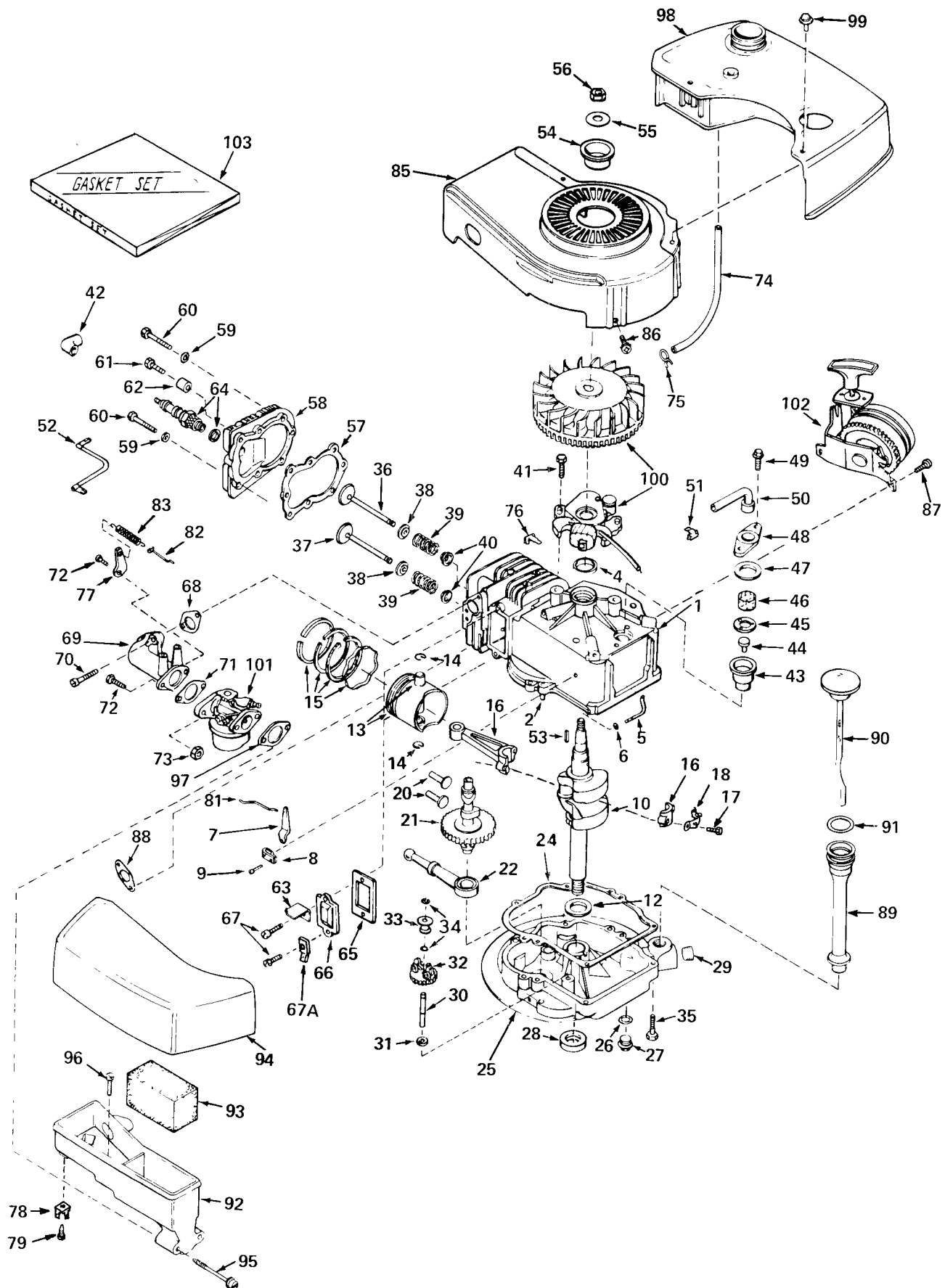


## GRASS BAG ASSEMBLY

Ref. No.	Part No.	Description	No. Used
1	23-0170	Cover	1
2	32146-17	Locknut	2
3	23-1060	Latch - Bag	1
4	3290-321	Hex Hd. Machine Screw	7
5	6-1389	Grass Bag	1
6	32153-1	Locknut	7

Ref. No.	Part No.	Description	No. Used
7	23-5100	Bracket Support	1
8	23-1140	Door - Bag	1
9	23-1150	Bracket Door	1
10	25-3120	Screw	2
11	25-3230	Bag Frame	1
12	23-1110	Bag Support	1

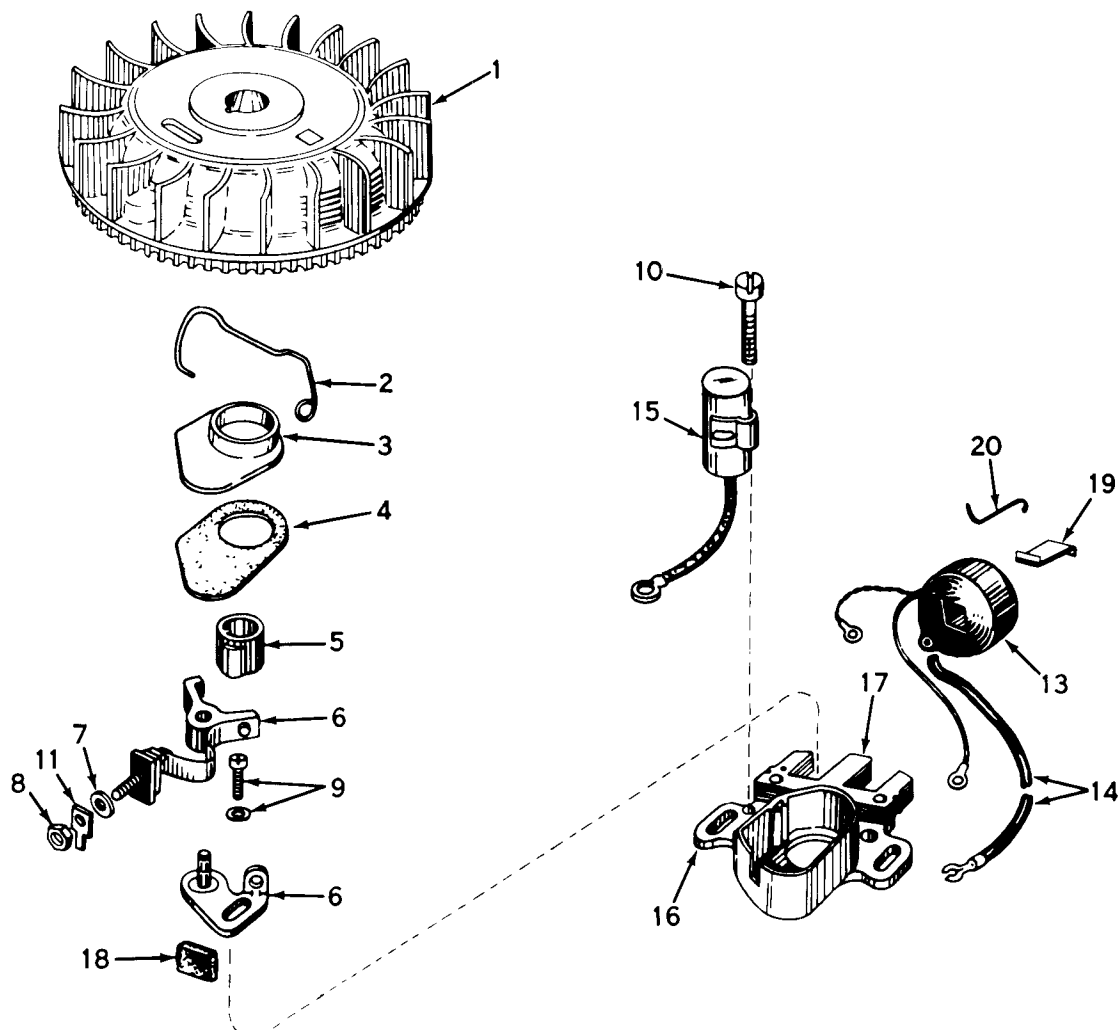
# ENGINE TECUMSEH MODEL NO. TNT 120-12002



# ENGINE TECUMSEH MODEL NO. TNT 120-12002

Ref. No.	Part No.	Description	No. Used
1	33899	Cylinder Assembly (Incl. # 2, 4 & 87)	1
2	26727	Pin, Dowel	2
4	32600	Seal, Oil	1
5	30589	Rod, Governor (Incl. # 6)	1
6	28277	Washer, Flat	1
7	32651	Lever, Governor	1
8	31335	Clamp, Governor Lever	1
9	650548	Screw, Hex Slotted Washer Hd.	1
10	33900	Crankshaft	1
12	32323	Washer, Thrust	1
13	33562	Piston & Pin Assembly (Incl. 2 of # 14) (Standard)	1
13	33563	Piston & Pin Assembly (Incl. 2 of # 14) (.010 Oversize)	1
13	33564	Piston & Pin Assembly (Incl. 2 of # 14) (.020 Oversize)	1
14	20381	Ring, Piston Pin Retaining	2
15	33567	Ring Set, Piston (Standard)	1
15	33568	Ring Set, Piston (.010 Oversize)	1
15	33569	Ring Set, Piston (.020 Oversize)	1
16	32875	Rod Assembly, Connecting (Incl. # 17 & 18)	1
17	32610	Bolt, Connecting Rod	2
18	32609	Plate, Lock	1
20	27241	Lifter, Valve	2
21	33553	Camshaft (Mech. Comp. Release)	1
22	29914	Pump Assembly, Oil	1
24	*26750A	Gasket, Mounting Flange	1
25	33901	Flange Assembly, Mounting (Incl. # 27, 28, 29 & 30)	1
26	*28833	Gasket, Oil Drain Plug	1
27	27244	Plug, Oil Drain	1
28	27897	Seal, Oil	1
29	33885	Plug, Oil Drain	1
30	30574	Shaft, Mechanical Governor	1
31	30590A	Washer, Flat	1
32	33902	Gear Assembly, Governor	1
33	33903	Spool, Governor	1
34	29193	Ring, Retaining	2
35	650488	Screw, Hex Hd. Sems	6
36	29314A	Valve, Intake (Standard) (Incl. # 38, 39 & 40)	1
36	29315B	Valve, Intake (1/32" Oversize) (Incl. # 38, 39 & 40)	1
37	29313B	Valve, Exhaust (Standard) (Incl. # 38, 39 & 40)	1
37	29315B	Valve, Exhaust (1/32 Oversize) (Incl. # 38, 39 & 40)	1
38	31671	Cap, Upper Valve Spring	2
39	31672	Spring, Valve	2
40	31673	Cap, Lower Valve Spring	2
41	650489	Screw, Hex. Hd. Sems w/Flatwasher	2
42	610118	Cover, Spark Plug	1
43	33731	Body, Breather Tube	1
44	33732	Valve, Check	1
45	33733	Baffle, Breather	1
46	33734	Element, Breather	1
47	*33735	Gasket, Breather	1
48	33737	Cover, Breather	1

Ref. No.	Part No.	Description	No. Used
49	650768	Screw, Hex. Hd. w/Conical Washer	2
50	33886	Tube, Breather	1
51	33887	Clip, Breather Tube	1
52	33888	Wire, Ground	1
53	27247	Key, Flywheel	1
54	33914	Cup	1
55	650490	Washer, Belleville	1
56	650607	Nut, Flywheel	1
57	*33554	Gasket, Cylinder Head	1
58	33016	Head, Cylinder	1
59	26073	Washer	8
60	6021	Screw, Hex. Hd. Cap	5
61	650697	Screw, Hex. Hd. Cap	3
62	33892	Spacer	3
63	30593	Clip, Magneto Wire	1
64	33636	Plug, Spark (Champion J-8 or equivalent)	1
65	*27234	Gasket, Valve Spring Cover	1
66	32755	Cover, Valve Spring Box	1
67	650128	Screw, Fil. Slotted Hd. Sems	2
67A	33932	Terminal	1
68	*30188	Gasket, Intake Pipe	1
69	33004	Pipe, Intake	1
70	650451	Screw, Fil. Flex Hd. Self-Locking	2
71	31688	Gasket, Carburetor	1
72	6202	Screw, Hex. Hd. Cap Sems.	2
73	29752	Nut & Lockwasher	2
74	32342	Line, Fuel	1
75	26460	Clamp, Fuel Line	2
76	29443	Clip, Fuel Line	1
77	33086	Lever, R.P.M. Adjusting	1
78	33933	Terminal	1
79	650760	Screw, Pan Hd. Tri-Roundular Sheet Metal	1
81	33133	Link, Governor	1
82	33295	Link, Governor Spring	1
83	31361	Spring, Governor	1
85	33891	Housing, Blower	1
86	650497	Screw, Flex Pan Hd.	2
87	650737	Screw, Phil. Hex. Hd. Sems, Self-Tap	3
88	*30081	Gasket, Exhaust	1
89	33893	Tube, Oil Filler	1
90	33894	Dipstick, Oil (Incl. # 91)	1
91	33590	"O" Ring	1
92	33895	Body, Air Cleaner	1
93	33896	Filter, Air	1
94	33897	Cover, Air Cleaner	1
95	650762	Screw, Fil. Hd. Mach. Sems.	2
96	650784	Screw, Hex. Hd. w/Flatwasher Thread Forming	1
97	*33051	Gasket, Air Cleaner	1
98	33904	Tank, Fuel	1
99	28763	Screw, Hex Washer Hd. Thread Forming	2
100	610755	Magneto	1
101	631831	Carburetor	1
102	590450A	Starter, Side Mount	1
103	33906	Gasket Set (Incl. Items Marked *)	1



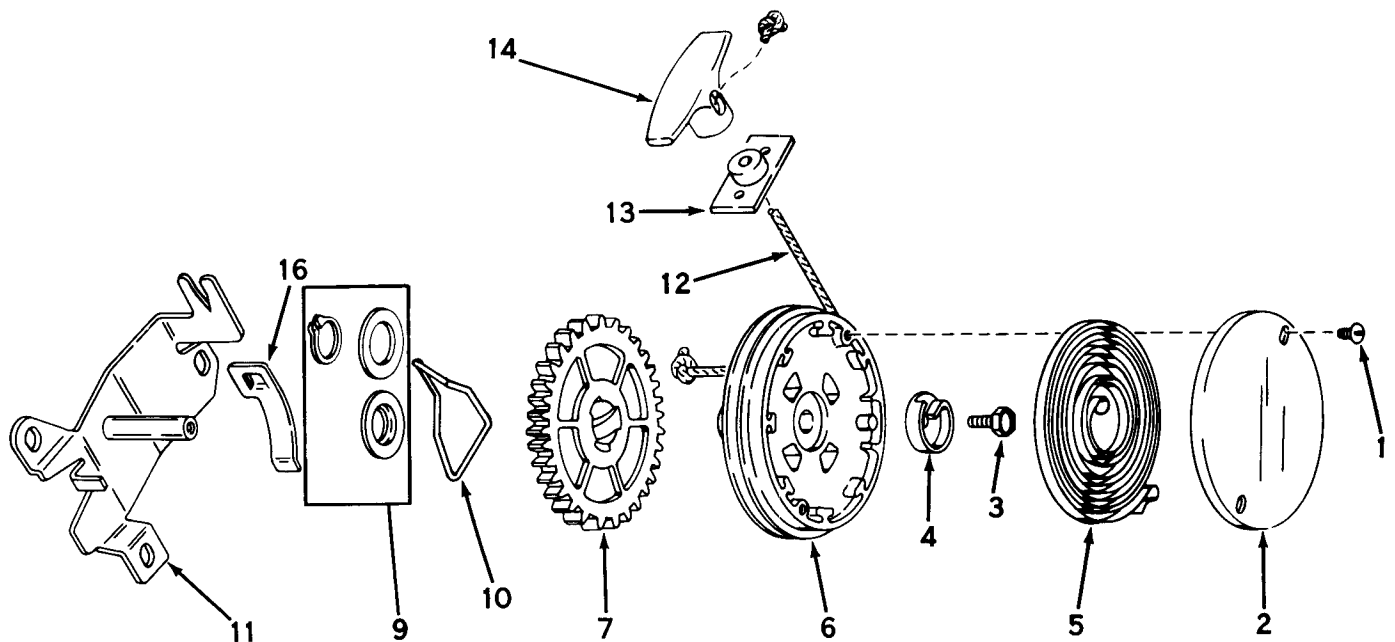
### \* MAGNETO NO. 610755

Ref. No.	Part No.	Description	No. Used
1	32517	Flywheel	1
2	30551	Spring, Breaker Box Dust Cover	1
3	30550	Cover, Breaker Box Dust	1
4	32052	Gasket, Dust Cover	1
5	30992	Cam, Breaker	1
6	30547A	Breaker Assy.	1
7	610385	Washer, Terminal	1
8	610408	Nut, Terminal	1
9	29181	Screw & Washer Assy., Breaker	1
10	610593	Screw, Condenser Fastening	1

Ref. No.	Part No.	Description	No. Used
11	33356	Tab, Ground Terminal	1
13	30560A	Coil Assy. (Incl. No. 14)	1
14	30554	Wire, Ignition Lead	1
15	30548A	Condenser	1
16	30545	Core & Plate Group	1
17	30561A	Stator Assy. (Incl. Nos. 2, 3, 4, 6 thru 16, 18, 19 & 20)	1
18	30549	Felt, Cam Wiper	1
19	29629	Spring, Coil Wedge	1
20	31311	Clip, Coil Locking	1

\*The complete magneto is not available as an assembly. The magneto number is shown for reference purposes only. Order component parts individually, as shown in parts list.



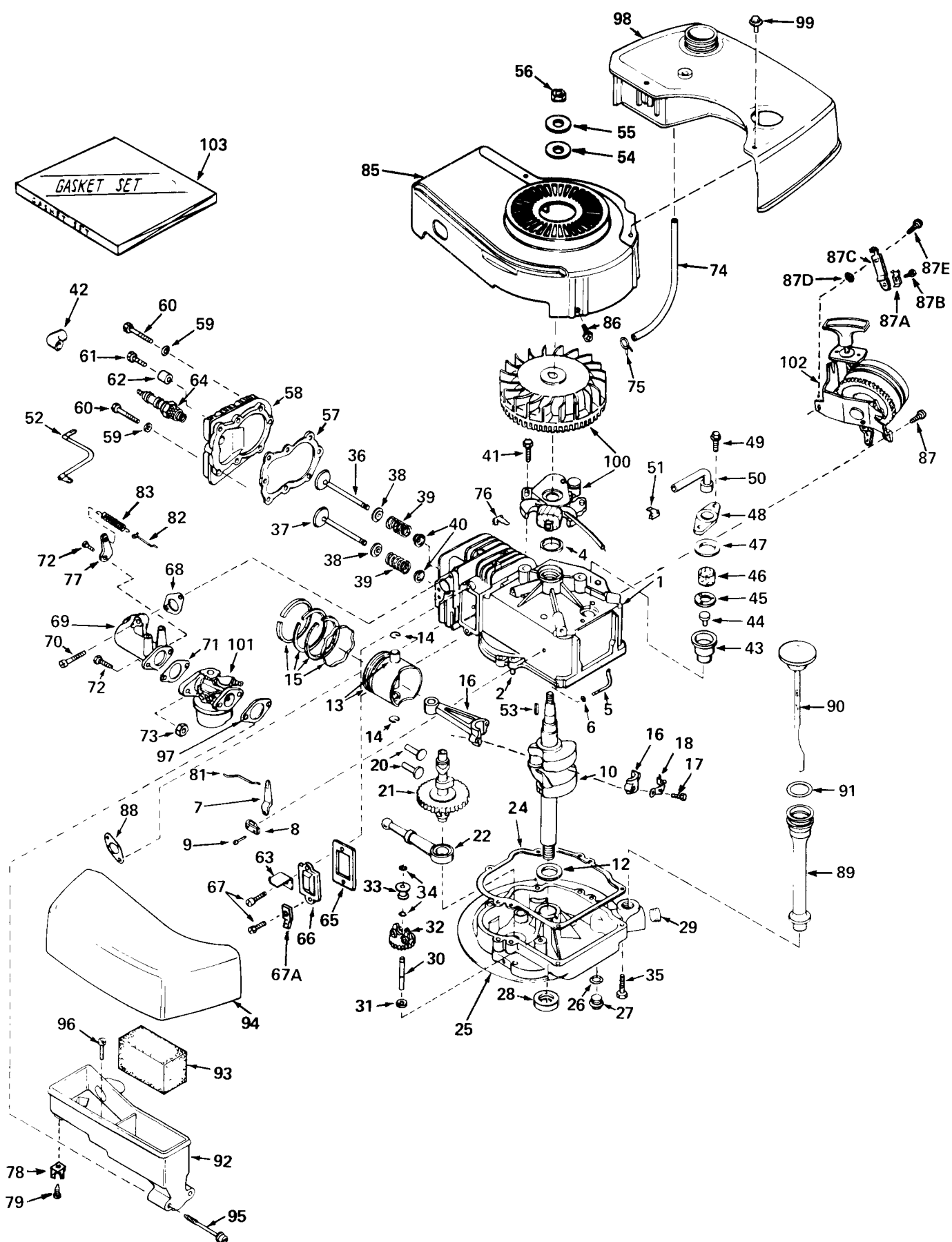


## REWIND STARTER NO. 590450A

Ref. No.	Part No.	Description	No. Used
1	590430	Screw, Cover	2
2	590431	Cover, Spring	1
3	590472	Screw, Hex Washer Hd. Taptite Left Hand Thrd.	1
4	590432	Hub, Spring	1
5	590433	Spring, Rewind	1
6	590434A	Pulley Assy. (Incl. # 9)	1
7	590435A	Gear	1
9	590470	Kit, Thrust Washer & Snap Ring	1

Ref. No.	Part No.	Description	No. Used
10	590438	Brake	1
11	590439A	Bracket Assy., Mounting	1
12	590451	Rope, Starter (Length 61" and 5/32" Diameter)	1
13	590441	Bracket Assy. (Can be removed if not required)	1
14	590452	Handle, Starter	1
16	590446	Clip, Rope	1

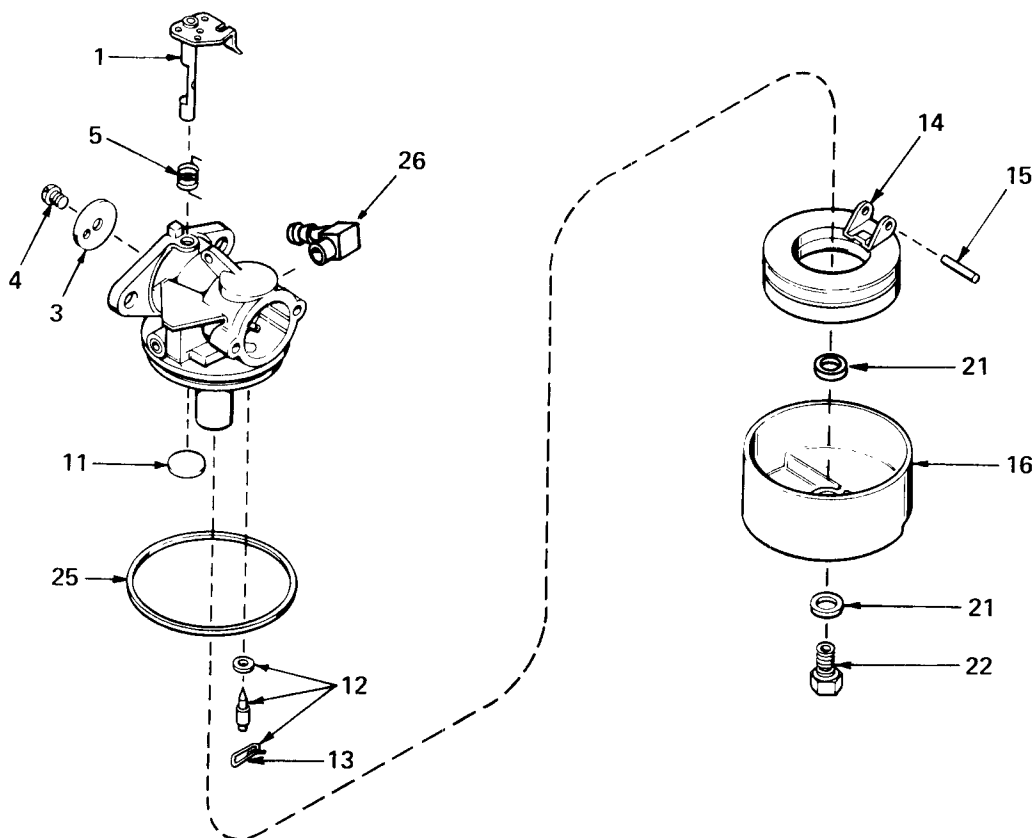
# ENGINE TECUMSEH MODEL NO. TNT 120-12003



# ENGINE TECUMSEH MODEL NO. TNT 120-12003

Ref. No.	Part No.	Description	No. Used
1	33899	Cylinder Assembly (Incl. Nos. 2, 4 & 87)	1
2	26727	Pin, Dowel	2
4	32600	Seal, Oil	1
5	30589	Rod, Governor (Incl. No. 6)	1
6	28277	Washer, Flat	1
7	32651	Lever, Governor	1
8	31335	Clamp, Governor Lever	1
9	650548	Screw, Hex Slotted Washer Hd.	1
10	34085	Crankshaft	1
12	32323	Washer, Thrust	1
13	33562	Piston & Pin Assembly (Incl. 2 of No. 14) (Std.)	1
13	33563	Piston & Pin Assembly (Incl. 2 of No. 14) (.010 Oversize)	1
13	33564	Piston & Pin Assembly (Incl. 2 of No. 14) (.020 Oversize)	1
14	20381	Ring, Piston Pin Retaining	2
15	33567	Ring Set, Piston (Std.)	1
15	33568	Ring Set, Piston (.010 Oversize)	1
15	33569	Ring Set, Piston (.020 Oversize)	1
16	32875	Rod Assembly, Connecting (Incl. Nos. 17 & 18)	1
17	32610	Bolt, Connecting Rod	2
18	32609	Plate, Lock	1
20	27241	Lifter, Valve	2
21	33553	Camshaft (Mech. Compression Release)	1
22	29914	Pump Assembly, Oil	1
24	*26750A	Gasket, Mounting Flange	1
25	33901	Flange Assembly, Mounting (Incl. Nos. 27 thru 30)	1
26	*28833	Gasket, Oil Drain Plug	1
27	27244	Plug, Oil Drain	1
28	27897	Seal, Oil	1
29	33885	Plug, Oil Drain	1
30	30574	Shaft, Mechanical Governor	1
31	30590A	Washer, Flat	1
32	33902	Gear Assembly, Governor	1
33	33903	Spool, Governor	1
34	29193	Ring, Retaining	2
35	650488	Screw, Hex Hd. Sems	6
36	29314A	Valve, Intake (Std.) (Incl. Nos. 38, 39 & 40)	1
36	29315B	Valve, Intake (1/32" Oversize) (Incl. Nos. 38, 39 & 40)	1
37	29313B	Valve, Exhaust (Std.) (Incl. Nos. 38, 39 & 40)	1
37	29315B	Valve, Exhaust (1/32" Oversize) (Incl. Nos. 38, 39 & 40)	1
38	31671	Cap, Upper Valve Spring	2
39	31672	Spring, Valve	2
40	31673	Cap, Lower Valve Spring	2
41	650489	Screw, Hex Hd. Sems w/Flatwasher	2
42	610118	Cover, Spark Plug	1
43	33731	Body, Breather Tube	1
44	33732	Valve, Check	1
45	33733	Baffle, Breather	1
46	33734	Element, Breather	1
47	*33735	Gasket, Breather	1
48	33737	Cover, Breather	1
49	650768	Screw, Hex Hd. w/Conical Washer	2
50	33886	Tube, Breather	1
51	33887	Clip, Breather Tube	1

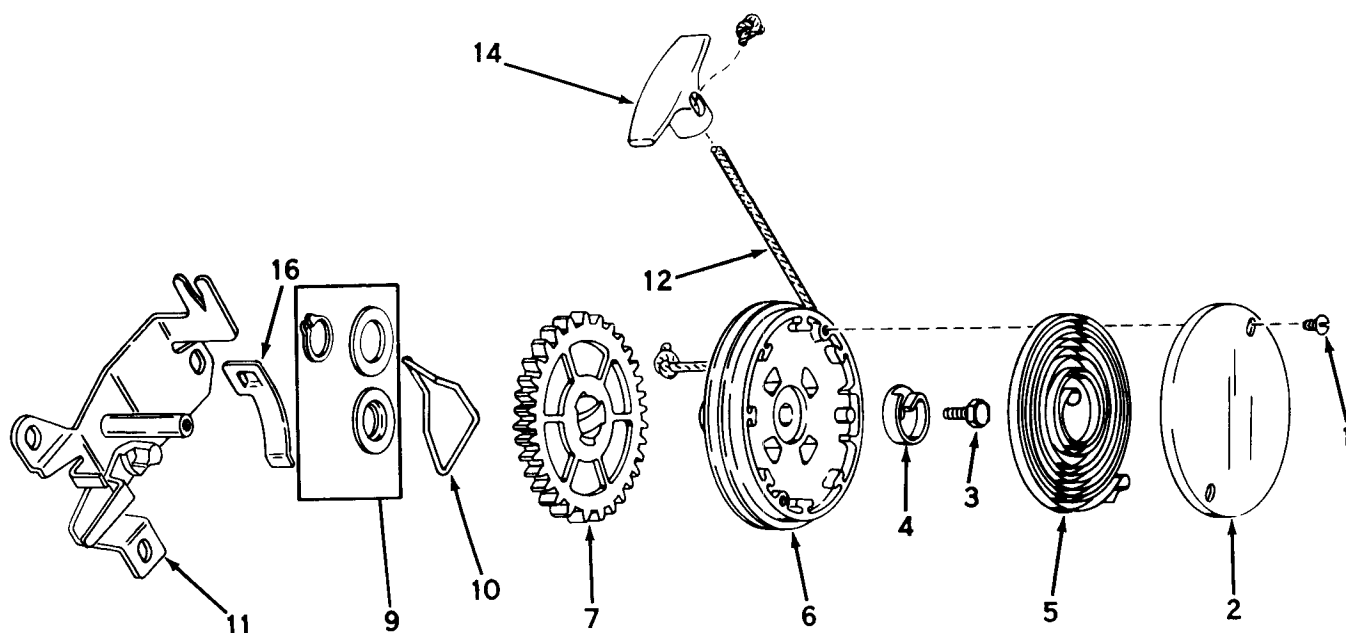
Ref. No.	Part No.	Description	No. Used
52	33888	Wire, Ground	1
53	27247	Key, Flywheel	1
54	650791	Washer, Flat	1
55	650790	Washer, Belleville	1
56	650792	Nut, Flywheel	1
57	*33554	Gasket, Cylinder Head	1
58	33016	Head, Cylinder	1
59	26073	Washer	5
60	6021	Screw, Hex Hd. Cap	5
61	650697	Screw, Hex Hd. Cap	3
62	33892	Spacer	3
63	30593	Clip, Magneto Wire	1
64	33636	Plug, Spark (Champion J-8 or Equivalent)	1
65	*27234	Gasket, Valve Spring Cover	1
66	32755	Cover, Valve Spring Box	1
67	650128	Screw, Fil. Slotted Hd. Sems	2
67A	33932	Terminal	1
68	*30188	Gasket, Intake Pipe	1
69	33004	Pipe, Intake	1
70	650451	Screw, Fil. Flex Hd. Self-Locking	2
71	*31688	Gasket, Carburetor	1
72	6202	Screw, Hex Hd. Cap Sems	2
73	29752	Nut & Lockwasher	2
74	30705	Line, Fuel	1
75	26460	Clamp, Fuel Line	2
76	29443	Clip, Fuel Line	1
77	33086	Lever, R.P.M. Adjusting	1
78	33933	Terminal	1
79	29666	Screw, Phil. Fil. Hd. Self-Tap	1
81	33133	Link, Governor	1
82	33295	Link, Governor Spring	1
83	31361	Spring, Governor	1
85	33891	Housing, Blower	1
86	650497	Screw, Flex Pan Hd.	2
87	650737	Screw, Phil. Hex Hd. Sems, Self-Tap	3
87A	27793	Clip, Conduit	1
87B	28942	Screw, Slotted Hex Hd. Sems	1
87C	34099	Bracket	1
87D	27070	Washer	1
87E	650738	Screw, Phil. Hex Hd. Self-Tap	1
88	*30081	Gasket, Exhaust	1
89	33893	Tube, Oil Filler	1
90	33894	Dipstick, Oil (Incl. No. 91)	1
91	33590	"O" Ring	1
92	33895	Body, Air Cleaner	1
93	33896	Filter, Air	1
94	33897	Cover, Air Cleaner	1
95	650762	Screw, Fil. Hd. Mach. Sems	2
96	650784	Screw, Hex Hd. w/Flatwasher Thr'd Forming	1
97	*33051	Gasket, Air Cleaner	1
98	33904	Tank, Fuel	1
99	28763	Screw, Hex Washer Hd. Thr'd Forming	2
100	610755	Magneto (The complete magneto is not available as an assembly. The magneto no. is shown for refer- ence purposes only. Order com- ponent parts individually, as shown in parts list.)	1
101	631831	Carburetor (Incl. No. 71)	1
102	590519	Starter, Side Mount	1
103	33906	Gasket Set (Incl. Items Marked *)	1



## CARBURETOR NO. 631831

Ref. No.	Part No.	Description	No. Used
1	631615	Shaft & Lever Assy., Throttle	1
3	631616	Shutter, Throttle	1
4	650506	Screw	1
5	630731	Spring, Return	1
11	631027	Plug, Welch	1
12	631021	Inlet Needle, Seat & Clip Assy. (Incl. # 13)	1
13	631022	Clip, Inlet Needle	1

Ref. No.	Part No.	Description	No. Used
14	631023	Float, Carburetor	1
15	631024	Shaft, Float	1
16	631700	Bowl Float	1
21	631334	Gasket, Bowl-to-Body	2
22	631617	Nut, Float Bowl	1
25	631028	Gasket, Bowl-to-Body	1
26	631807	Fitting, Fuel Inlet	1



## REWIND STARTER NO. 590519

Ref. No.	Part No.	Description	No. Used
1	590477	Screw, Cover	2
2	590431	Cover, Spring	1
3	590472	Screw, Hex Washer, Hd. Taptite Left Hand Thread	1
4	590432	Hub, Spring	1
5	590433	Spring, Rewind	1
6	590434A	Pulley Assy. (Incl. # 9)	1
7	590435B	Gear	1

Ref. No.	Part No.	Description	No. Used
9	590470	Kit, Thrust Washer & Snap Ring	1
10	590438	Brake	1
11	590520	Bracket Assy., Mounting	1
12	590451A	Rope, Starter (Length 69" and 5/32" Diameter)	1
14	590452	Handle, Starter	1
16	590446	Clip, Rope	1

## PRODUCT CHANGES

In an effort to make improvements available to TORO owners as quickly as possible, minor changes are incorporated into Toro's products from time to time that do not become immediately shown in the Parts Catalog. If such a change apparently has been made in your unit, which is not reflected in your manual, see your TORO distributor or his Authorized TORO Service Dealer for information and part numbers.

## IMPORTANT ORDERING INSTRUCTIONS

Repair parts are available from your Authorized TORO Service Dealer. To insure getting correct parts without delay, furnish the following information:

1. Serial number of your mower as shown on the name plate.
2. Part number, description, and quantity of each part required.

3. State whether parts should be shipped by mail or express. All repair parts are shipped F.O.B. Factory.

4. Name and address where parts are to be shipped.

5. Do not order by reference number, use part number only.

## THE TORO PROMISE

It is Toro's policy to design and produce TORO products to provide our customers with a high level of performance and durability in normal operation. Our products, however, are produced in high volume, and it is inevitable that occasionally a unit will reach a customer with a defect in materials or workmanship which causes that unit to fall below the normal high

level of TORO performance. Invariably, such a defect will be noticed in a residential product within one year, and in an institutional product within ninety days after purchase. Recognizing this possibility, Toro has established a simple guarantee policy and procedure that is intended to assure customer satisfaction. This guarantee statement is as follows:

### The Toro Promise

*The Toro Company promises to repair any TORO product for the original purchaser if defective in materials or workmanship. The following time periods from the date of purchase apply:*

Residential products . . . . .	1 year
Residential products used commercially . . .	45 days
Institutional products . . . . .	90 days

*The costs of parts and labor are included, but the customer pays the transportation costs. Just return any residential product to an Authorized TORO Service Dealer, or any institutional product to a TORO distributor.*

Should you feel that a product is defective, and wish to rely on The Toro Promise, the following procedure is recommended:

1. Contact any TORO dealer or distributor, but preferably the dealer or distributor from whom you purchased the product.
2. He will instruct you to either return the product to him, or tell you the name and address of your nearest Authorized TORO Service Dealer if the product is to be returned to such dealer.
3. Take the product and your original sales slip, or other evidence of purchase date, to the servicing dealer.

4. The servicing dealer will inspect the unit, advise you whether the product is defective and, if so, make all repairs necessary to correct the defect without extra charge to you.

If for any reason you are dissatisfied with the dealer's analysis of the defect or the service he performs, we urge you to contact us. Write:

TORO "Customer Care" Department  
8111 Lyndale Avenue South  
Bloomington, Minnesota 55420

## MAINTENANCE RECORD

[illegible]

## MAINTENANCE RECORD

[illegible]