



Deluxe Seat Kit
Groundsmaster[®] 200 and 300 Series
Model No. 30625

Parts Catalog

Ordering Replacement Parts

To order replacement parts, please supply: the part number, the quantity, and the description of each part desired.

Understanding Reference Numbers

Each identified part in an illustration has a reference number. The reference number for a part also appears in the parts list, along with other information about the part.

This catalog uses two special reference number formats, one to indicate parts in a service assembly and another to indicate the quantity of a given part in an illustration.

Service Assembly Reference Numbers

Parts in service assemblies have reference numbers in the form **a:b**. The **a** represents the reference number of the entire service assembly and the **b** represents a sequential number unique to each part within the service assembly.

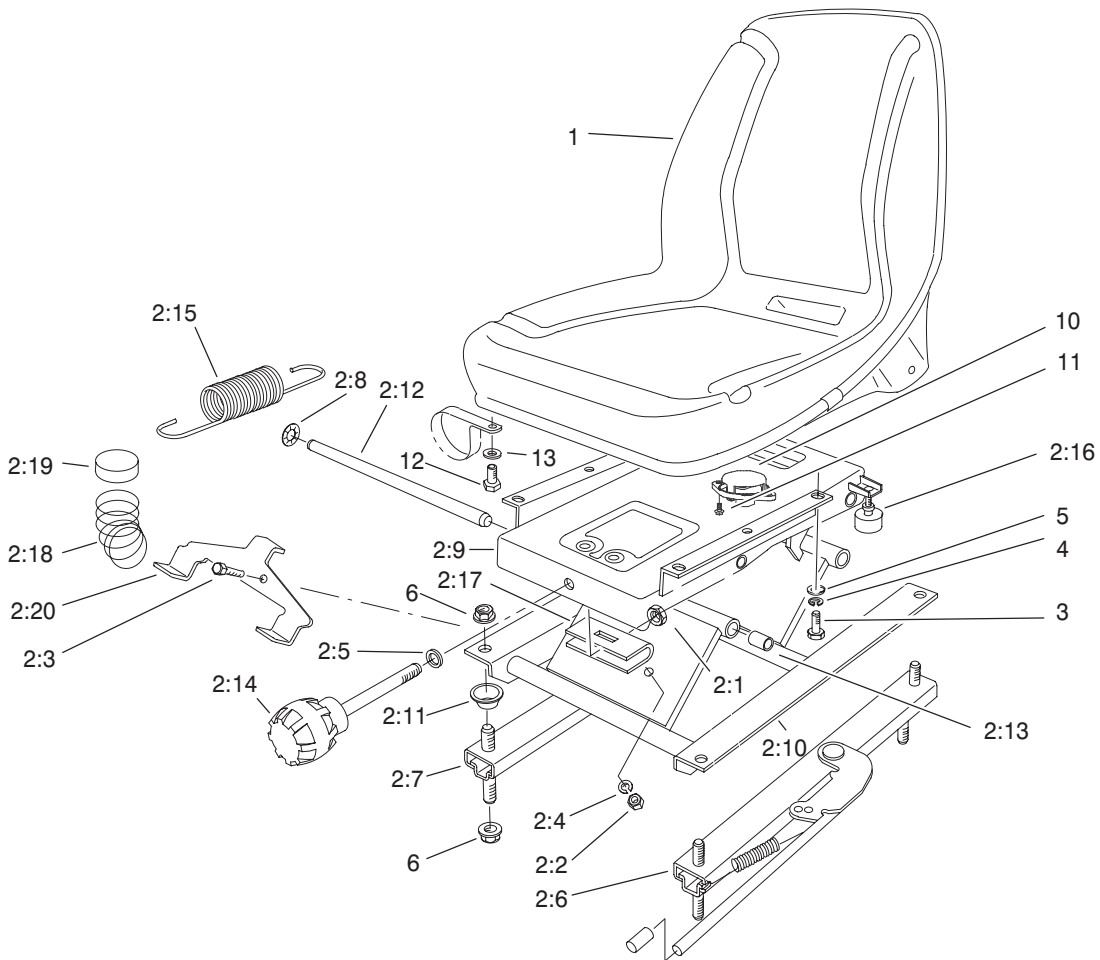
For example, a wheel assembly might be identified by reference number **6**, the tire by **6:1**, the valve by **6:2**, and the wheel by **6:3**. When you order the assembly identified by reference number **6**, you receive all parts identified by reference numbers **6:1**, **6:2**, and **6:3**. However, you may also order any part individually.

Reference numbers of this type appear in illustrations and in part lists.

Reference Numbers Indicating Quantity

In an illustration, if a reference number indicates more than one part, the reference number has the form **nX y**. The **n** represents the quantity of the part, the **X** is the multiplication symbol, and the **y** represents the reference number.

For example, in an illustration, the reference number **2X 37** means that two of the parts identified by reference number **37** are indicated.



Sheet No.:0
T-3782

Deluxe Seat Kit Assembly

Ref. No.	Part No.	Qty.	Description
1	104-4620	1	Seat-Olympic, Toro
2	76-1970	1	Mini-Suspension
2:1	32153-2	1	Nut-Lock
2:2	3217-6	1	Nut-Hex
2:3	322-6	1	Screw-HH
2:4	3253-33	1	Washer-Lock
2:5	3256-24	1	Washer-Flat
2:6	66-8510	1	Adjuster W/Handle
2:7	66-8530	1	Adjuster
2:8	66-8560	4	Nut-Push
2:9	66-8600	1	Frame-Upper
2:10	66-8610	1	Frame-Lower
2:11	66-9290	4	Spacer-Suspension
2:12	76-1910	2	Shaft-Pivot
2:13	76-1920	4	Bearing-Sleeve
2:14	76-1930	1	Knob-Adjuster, Tension
2:15	76-1940	2	Spring-Extension
2:16	76-2940	2	Bumper
2:17	77-2870	1	Hanger-Spring
2:18	93-3163	2	Spring
2:19	93-3164	2	Cap
2:20	93-3165	1	Bracket
3	322-3	4	Screw-HH
4	3253-4	4	Washer-Lock
5	3256-2	4	Washer-Flat

Ref. No.	Part No.	Qty.	Description
6	32128-25	4	Nut-Flange
10	92-6282	1	Switch-Seat
11	32144-10	2	Screw-HH
12	322-2	2	Screw-HH
13	3256-23	2	Washer-Flat