



# Stabilizer

## Dingo<sup>®</sup> Backhoe Attachment

Model No. 104-5740

## Parts Catalog

### Ordering Replacement Parts

To order replacement parts, please supply: the part number, the quantity, and the description of each part desired.

### Understanding Reference Numbers

Each identified part in an illustration has a reference number. The reference number for a part also appears in the parts list, along with other information about the part.

This catalog uses two special reference number formats, one to indicate parts in a service assembly and another to indicate the quantity of a given part in an illustration.

### Service Assembly Reference Numbers

Parts in service assemblies have reference numbers in the form **a:b**. The **a** represents the reference number of the entire service assembly and the **b** represents a sequential number unique to each part within the service assembly.

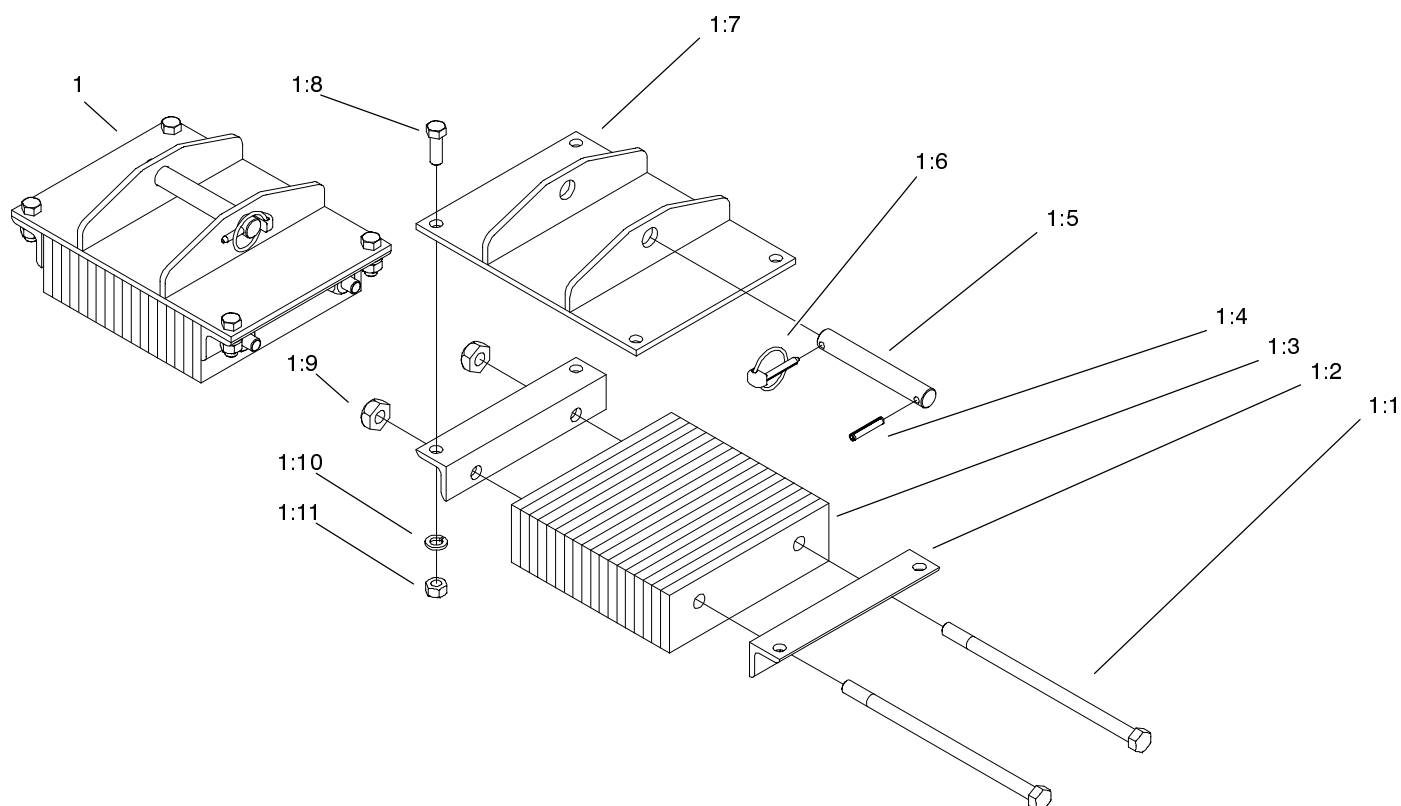
For example, a wheel assembly might be identified by reference number **6**, the tire by **6:1**, the valve by **6:2**, and the wheel by **6:3**. When you order the assembly identified by reference number **6**, you receive all parts identified by reference numbers **6:1**, **6:2**, and **6:3**. However, you may also order any part individually.

Reference numbers of this type appear in illustrations and in part lists.

### Reference Numbers Indicating Quantity

In an illustration, if a reference number indicates more than one part, the reference number has the form **nX y**. The **n** represents the quantity of the part, the **X** is the multiplication symbol, and the **y** represents the reference number.

For example, in an illustration, the reference number **2X 37** means that two of the parts identified by reference number **37** are indicated.



Sheet No.: 0

## Rubber Stabilizer Assembly

Ref. No.	Part No.	Qty.	Description
☆1		2	Stabilizer Pad ASM
1:1	104-5724	2	Screw-HH
1:2	104-5726	2	Angle-Foot
1:3	104-5725	20	Pad-Stabilizer
1:4	32121-15	1	Pin-Roll
1:5	100-7184	1	Pin-Stabilizer Foot
1:6	283-72	1	Pin-Lynch
1:7	104-5729	1	Foot ASM
1:8	324-5	4	Screw-HH
1:9	32146-13	2	Nut-Eslok
1:10	3253-6	4	Washer-Lock
1:11	3217-8	4	Nut-Hex

Ref. No.	Part No.	Qty.	Description

☆ Not serviced