



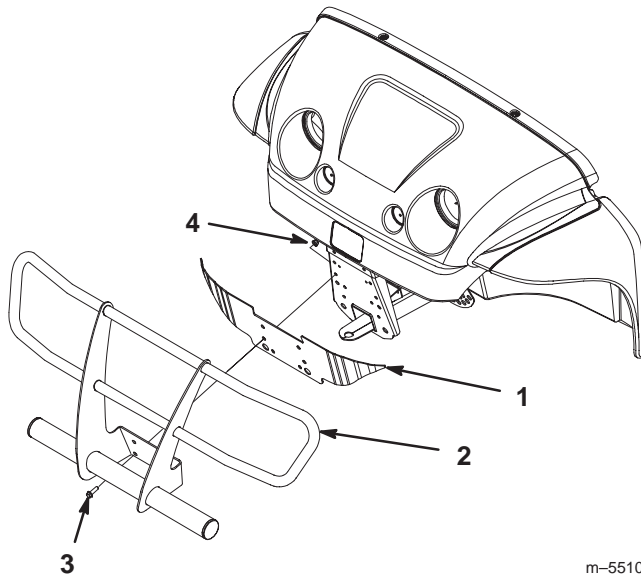
Heavy Duty Brushguard and Bumper Kit

Workman® 1100 and 2100 Utility Vehicle

Model No. 07296

Installation Instructions

1. Remove the existing bumper from the front of the vehicle.
2. Align the shield and heavy-duty bumper with the proper holes in the vehicle frame (Fig. 1).
3. Attach the heavy-duty bumper and shield to the vehicle with 4 flange bolts and nuts (Fig. 1).



m-5510

Figure 1

- | | |
|----------------------|----------------|
| 1. Shield | 3. Flange bolt |
| 2. Heavy duty bumper | 4. Flange nut |