



Form No. 380-0078 Rev E

Count on it.

Parts Catalog

Lynx Smart Hub, Golf Controller

Model No. SMART HUB, LYNX—Serial No. Copy and Up



Ordering Replacement Parts

To order replacement parts, please supply the part number, the quantity, and the description of each part desired.

Understanding Reference Numbers

Each identified part in an illustration has a reference number. The reference number for a part also appears in the parts list, along with other information about the part.

This catalog uses two special reference number formats, one to indicate parts in a service assembly and another to indicate the quantity of a given part in an illustration.

Service Assembly Reference Numbers

Parts in service assemblies have reference numbers in the form a:b. The a represents the reference number of the entire service assembly and the b represents a sequential number unique to each part within the service assembly.

For example, a wheel assembly might be identified by reference number 6, the tire by 6:1, the valve by 6:2, and the wheel by 6:3. When you order the assembly identified by reference number 6, you receive all parts identified by reference numbers 6:1, 6:2, and 6:3. However, you may also order any part individually. Reference numbers of this type appear in illustration and in parts lists.

Reference Numbers Indicating Quantity

In an illustration, if a reference number indicates more than one part, the reference number has the form nX y. The n represents the quantity of the part, the X is the multiplication symbol, and the y represents the reference number.

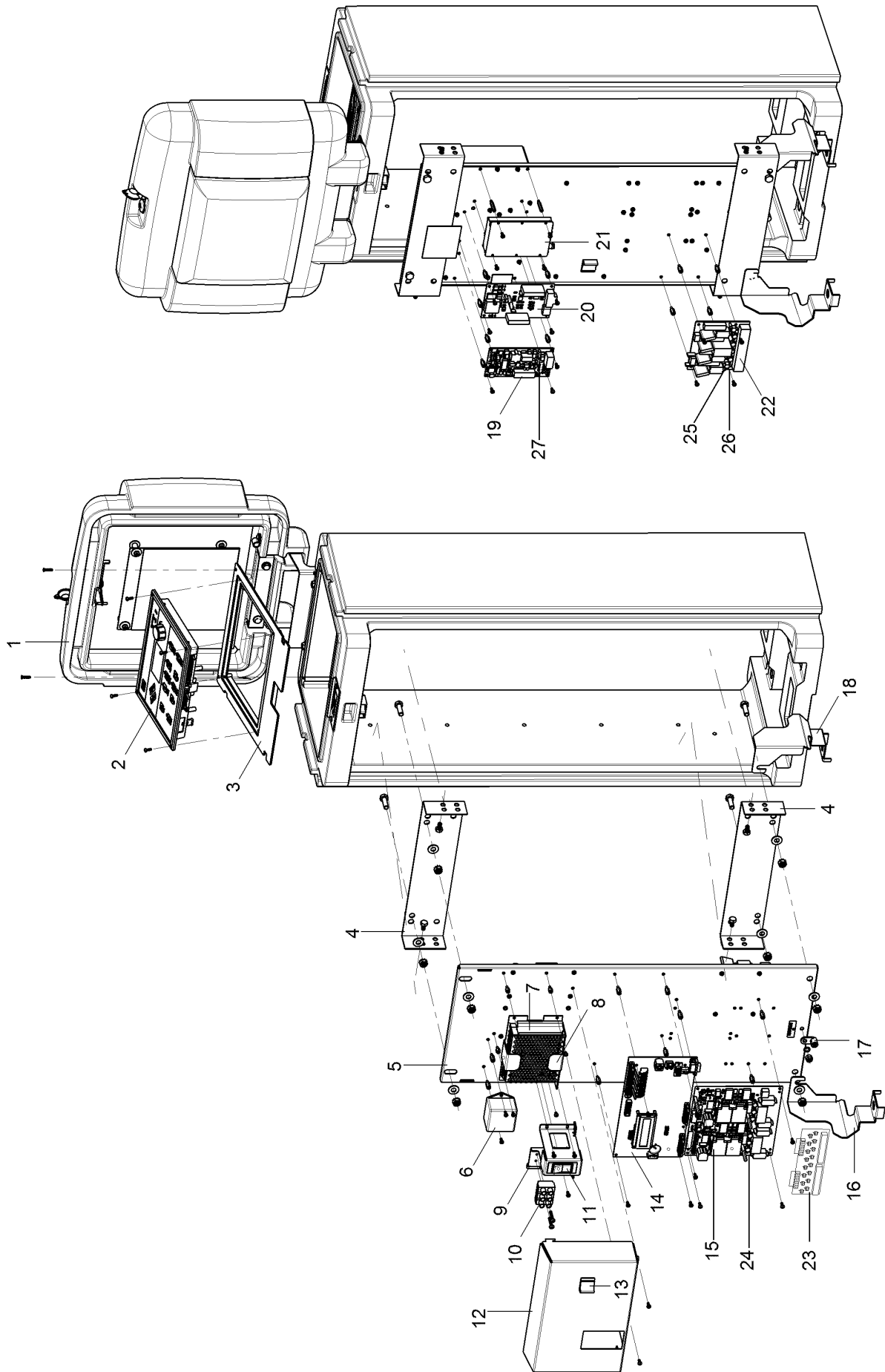
For example, in an illustration, the reference number 2X 37 means that two of the parts identified by reference number 37 are indicated.

Contents

Lynx Smart Hub Parts Breakout..... 4

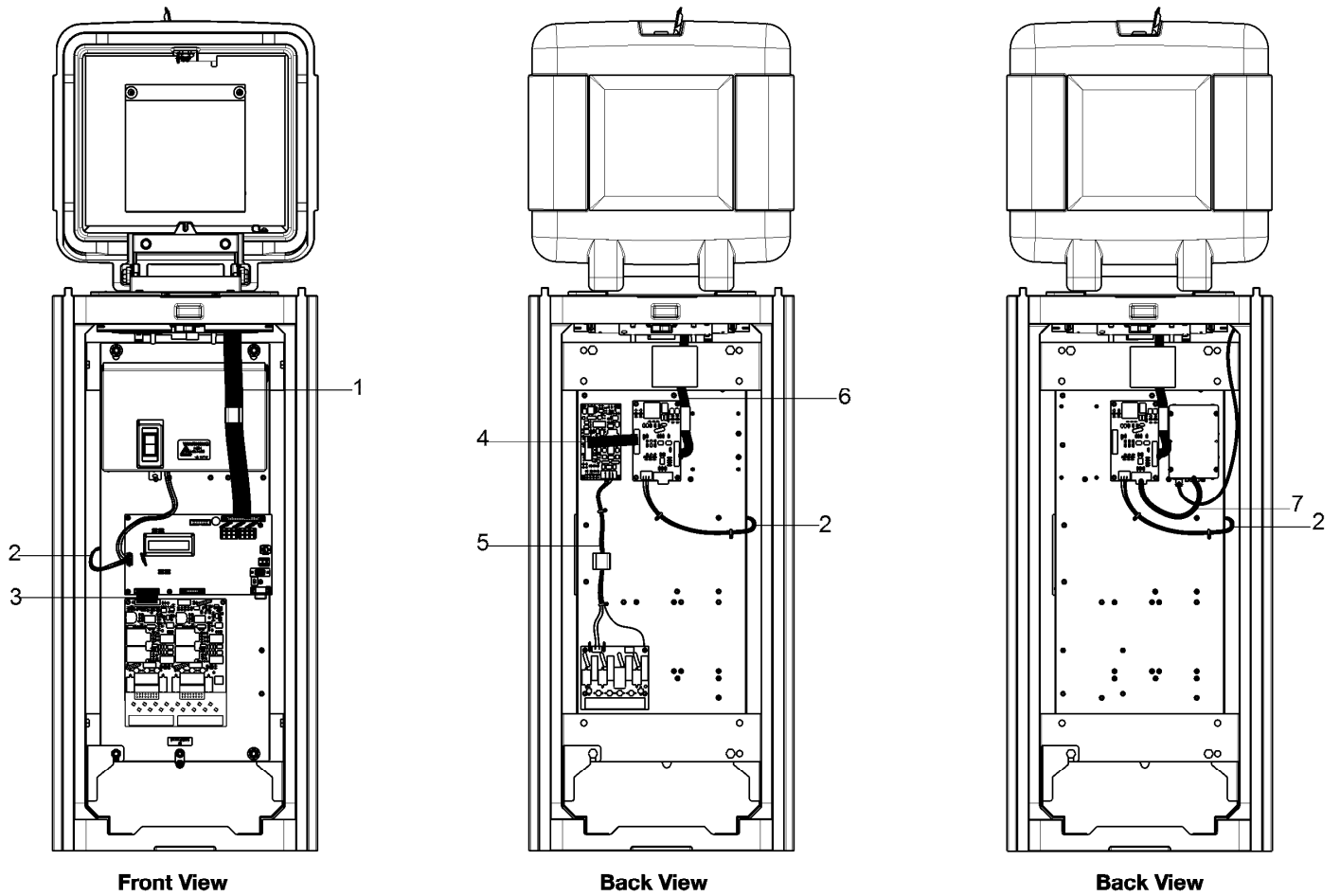
Lynx Smart Hub - Wires..... 6

Lynx Smart Hub Parts Breakout



Lynx Smart Hub Parts Breakout (continued)

<i>Ref.</i>	<i>Part Number</i>	<i>Qty.</i>	<i>Description</i>	<i>Ref.</i>	<i>Part Number</i>	<i>Qty.</i>	<i>Description</i>
1	118-0828	1	Plastic Pedestal, Short, Green, Assembly	14	118-7096SK	1	Motherboard, Lynx Smart Hub, Oct 2020 And Later
1	118-0829	1	Plastic Pedestal, Short, Tree Bark, Assembly	15	118-4718SK	1	Daughterboard Assembly, AC Decoder
1	118-0830	1	Plastic Pedestal, Short, Desert Sand, Assembly	15	118-2749SK	2	Daughterboard Assembly, DC Decoder
2	118-4728SK	1	Timing Mechanism Assy., Gateway (Remote)	15	118-7097SK	1	Daughterboard, Lynx Smart Hub, Oct 2020 And Later
3	103-5373	1	Plate, Face, Tm W/ Radio	16	102-3073	1	Foot Support Bracket
4	118-1015	2	Bracket	17	363-8639	1	Ground Lug
5	118-4624	1	Backplate, Pedestal, Gateway	18	102-3072	1	Foot Mount Bracket
6	102-9741	1	Ttf, Filter Assembly	19	118-3705SK	1	Modem, Wireline, Pcb
7	118-0540	1	Power Supply, AC/DC, Gateway, Decoder	20	118-3101SK	1	Radio Interface Board, Raveon, Pcb
8	118-5209	1	Mounting Plate, Power Supply	21	118-3442SK	1	Radio Module, Transceiver, Rv-M7-UC
9	118-4622	1	Mount, Switch, Pedestal	22	102-8086SK	1	Pcb Assy. Surge Board
10	363-3981	1	Terminal Block, 3-Position, 6 Awg	23	118-7187	1	Surge Output Board, DC Decoder
11	363-3361	1	Switch, Circuit Breaker, 1.5A	24	363-8506	8	Fuse, 5 X 20Mm, Fast, 3.15A, 250V, DC Daughterboard
12	118-4623	1	Cover, Power Supply, Pedestal	24	363-1020	8	Fuse, 2A, Mini Blade, Oct 2020 And Later
13	363-2321	2	Clamp, Cable Flat	25	363-8337	3	Fuse, 3Ag, 0.5A, 250V
14	118-2750SK	1	Motherboard Assembly With Tricomm, Gateway Decoder	26	363-8336	1	Fuse, 3Ag, 8.0A, 250V
14	118-4717SK	1	Motherboard Assembly, Gateway, AC Decoder	27	363-3943	2	Fuse, Auto, 1.0A, 250V



Lynx Smart Hub - Wires

<i>Ref.</i>	<i>Part Number</i>	<i>Qty.</i>	<i>Description</i>
1	118-4668	1	40 Position Connector, 30 Cond, Pedestal, Gateway
2	118-4667	1	Power Supply Harness, Pedestal, Gateway
3	102-4598	2	Ribbon Cable, 16 Cond, F/F
3	118-5804	2	Ribbon Cable, 20 Cond., F/F, Lynx Smart Hub, Oct 2020 And Later
4	118-4669	1	Interface Board To Modem Cable Assy., Pedestal, Gateway
5	118-4697	1	Wireline Cable Assy., Pedestal, Gateway
6	118-4670	1	Interface Board To Tm Cable Assy., Pedestal, Gateway
7	118-4671	1	Db9 Harness, Radio, Pedestal, Gateway

Notes:



Count on it.