



**Count on it.**

**Parts Catalog**

**Universal Groomer Drive MVP Kit  
Reelmaster® 22-inch or 27-inch EdgeSeries™  
Cutting Units with 7-inch Reel**

Model No. 140-5607



# Ordering Replacement Parts

To order replacement parts, please supply the part number, the quantity, and the description of each part desired.

## Understanding Reference Numbers

Each identified part in an illustration has a reference number. The reference number for a part also appears in the parts list, along with other information about the part.

This catalog uses two special reference number formats, one to indicate parts in a service assembly and another to indicate the quantity of a given part in an illustration.

## Service Assembly Reference Numbers

Parts in service assemblies have reference numbers in the form a:b. The a represents the reference number of the entire service assembly and the b represents a sequential number unique to each part within the service assembly.

For example, a wheel assembly might be identified by reference number 6, the tire by 6:1, the valve by 6:2, and the wheel by 6:3. When you order the assembly identified by reference number 6, you receive all parts identified by reference numbers 6:1, 6:2, and 6:3. However, you may also order any part individually. Reference numbers of this type appear in illustration and in parts lists.

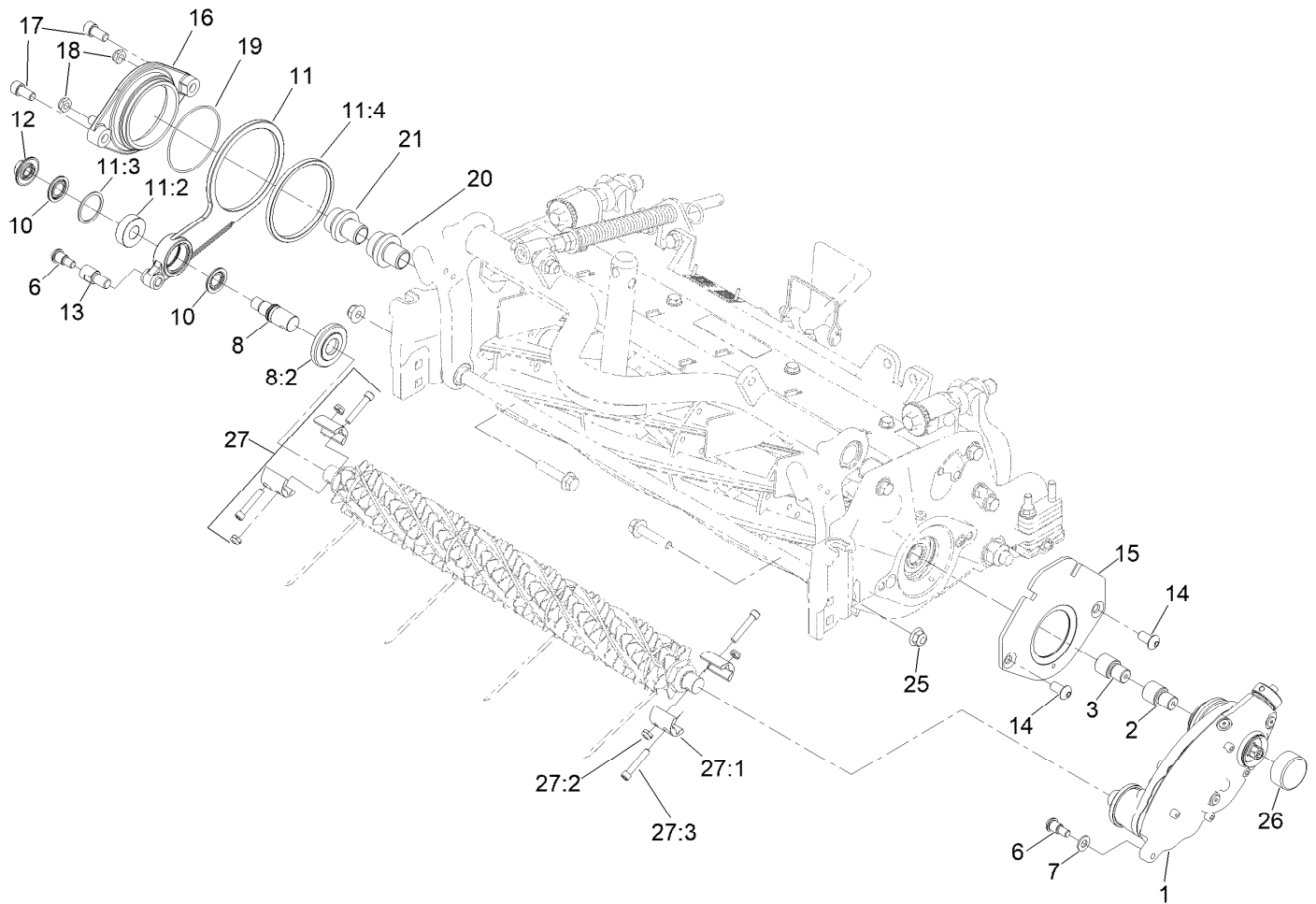
## Reference Numbers Indicating Quantity

In an illustration, if a reference number indicates more than one part, the reference number has the form nX y. The n represents the quantity of the part, the X is the multiplication symbol, and the y represents the reference number.

For example, in an illustration, the reference number 2X 37 means that two of the parts identified by reference number 37 are indicated.

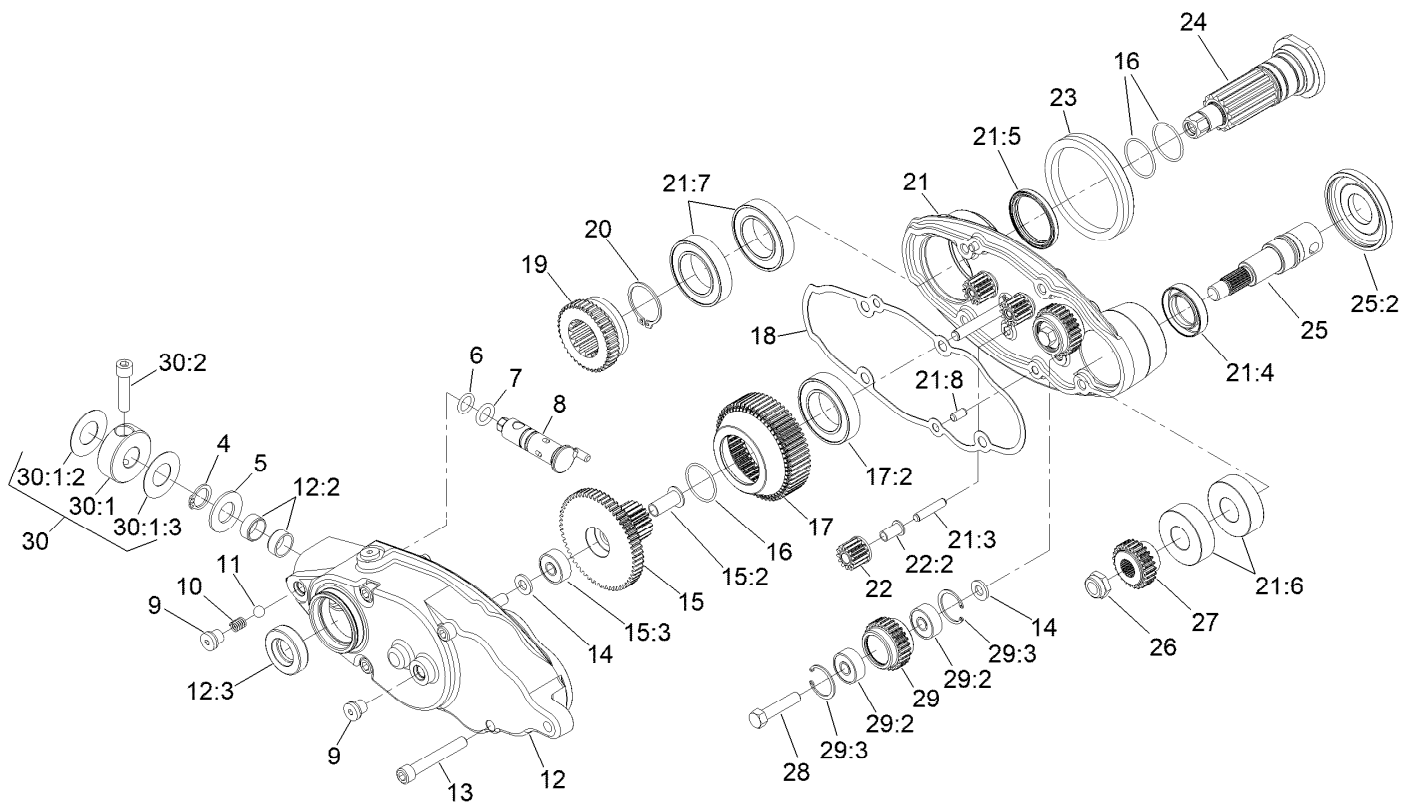
# Contents

Groomer Assembly No. 140-5607 .....	4
7 Inch Groomer Drive Box Assembly No. 137-5951 .....	5
Height of Groom Assembly .....	7



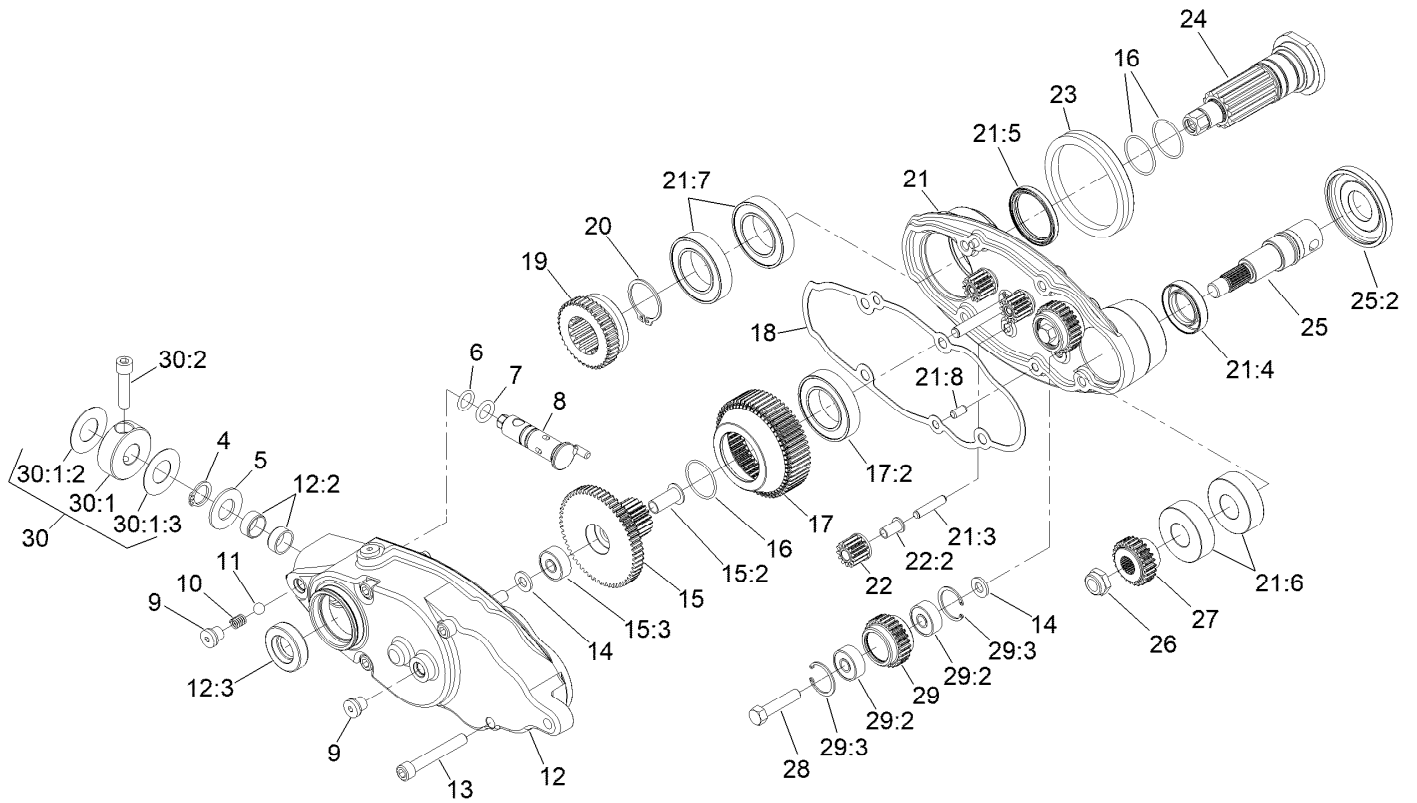
## Groomer Assembly No. 140-5607

<i>Ref.</i>	<i>Part Number</i>	<i>Qty.</i>	<i>Description</i>	<i>Ref.</i>	<i>Part Number</i>	<i>Qty.</i>	<i>Description</i>
1	137-5951	1	Groomer Drive Box ASM (7In)	16	108-4236	1	Hub-Pivot, Non Drive
2	137-0822	1	Adapter-Fairway, RH	17	131-8573	2	Screw-HSH
3	137-0823	1	Adapter-Fairway, LH	18	3296-59	2	Nut-Lock, NI
6	137-0869	2	Screw-Shoulder, Bh	19	112-6967	1	O-Ring
7	94-6936	1	Washer-Hardened	20	130-4100	1	Insert-Threaded, Extended (RH)
8	137-0964	1	Stub Shaft ASM	21	130-4101	1	Insert-Threaded, Extended (LH)
8:2	133-9109	1	Shield	25	104-8301	2	Nut-HF, NI
10	115-6923	2	Shield-Bearing, Flocked	26	137-0902	1	Cap-Round
11	131-1804	1	Idler Assembly	27	140-5554	1	Kit-Clamp-Groomer Cartridge
11:2	115-6869	1	Bearing-Ball, Stainless	27:1	137-0814	2	Clamp-Shaft
11:3	120-2893	1	Ring-Retaining, Spiral	27:2	3296-56	2	Nut-Lock, NI
11:4	132-0705	1	Bushing-Straight	27:3	140-5533	2	Screw-HSH
12	120-2888	1	Nut-Flange				
13	137-0877	1	Pin-Spring				
14	3274-80	2	Screw-HH				
15	132-0714-03	1	Bracket-Weight, 7 Inch Fairway				



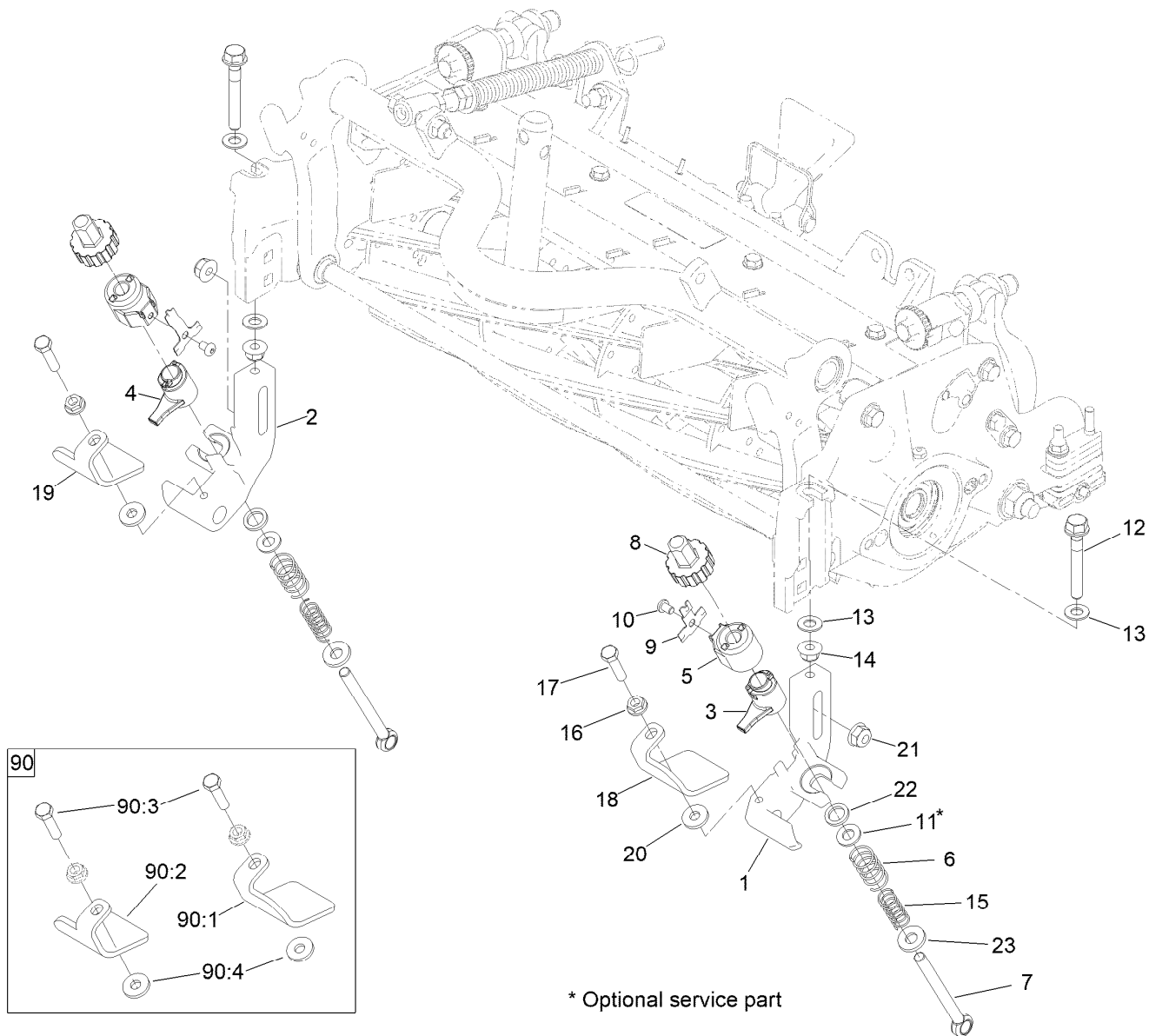
## 7 Inch Groomer Drive Box Assembly No. 137-5951

Ref.	Part Number	Qty.	Description	Ref.	Part Number	Qty.	Description
4	32151-61	1	Ring-Retaining	20	120-2878	1	Ring-Retaining, EXT
5	47-2910	1	Washer-Thrust	21	131-1897	1	7 Inch Housing ASM
6	237-22	1	O-Ring	21:3	120-2885	3	Pin-Planet
7	131-1879	1	O-Ring Seal	21:4	131-1829	1	Seal-Oil
8	120-2881	1	Shaft-Actuator, Clutch	21:5	133-4596	1	Seal-Oil
9	131-1825	4	Plug-ORB	21:6	115-6869	2	Bearing-Ball, Stainless
10	105-2443	1	Spring-Detent	21:7	132-0745	2	Bearing
11	105-2442	1	Ball-Detent	21:8	121-9249	2	Pin-Dowel
12	137-0942	1	Cover-Gearbox, 7 Inch	22	137-0962	3	Planet Gear ASM
12:2	121-4738	2	Bushing-Straight	22:2	120-2919	1	Bushing-Flange
12:3	137-0812	1	Seal-Oil	23	120-2876	1	Seal-V Ring
13	119-4035	4	Screw-HSH	24	137-0966	1	Shaft-Drive
14	120-2886	3	Washer-Thrust	25	137-0963	1	Driven Shaft ASM
15	137-0960	1	Gear-Sun ASM	25:2	133-9109	1	Shield
15:2	120-2921	1	Bushing-Flange	26	121-4600	1	Nut-Hex
15:3	117-8772	1	Bearing-Ball	27	132-0712	1	Gear-Driven 25 Tooth
16	132-0726	3	O-Ring	28	120-2857	2	Pin-Bearing
17	137-0961	1	Gear-Ring ASM	29	137-0972	2	Gear-Spur ASM
17:2	133-8286	1	Bearing	29:2	117-8772	2	Bearing-Ball
18	120-2899	1	Gasket-Housing, 7 Inch	29:3	93-7972	2	Ring-Retaining, Internal
19	120-2932	1	Gear-Driver	30	137-0959	1	Kit-Knob, Groomer Direction



## 7 Inch Groomer Drive Box Assembly No. 137-5951 (continued)

<i>Ref.</i>	<i>Part Number</i>	<i>Qty.</i>	<i>Description</i>	<i>Ref.</i>	<i>Part Number</i>	<i>Qty.</i>	<i>Description</i>
30:1	137-0958	1	Clutch Knob ASM	30:1:3	132-0727	1	Decal-Clutch, Drive (LH)
30:1:2	132-0719	1	Decal-Clutch, Drive (RH)	30:2	137-0956	1	Screw-HSH



\* Optional service part

## Height of Groom Assembly

Ref.	Part Number	Qty.	Description	Ref.	Part Number	Qty.	Description
1	137-0851	1	Bracket-HOC, LH	16	32128-20	2	Nut-HF
2	137-0850	1	Bracket-HOC, RH	17	119-3626	2	Screw-HH
3	133-9106	1	Up-Quick, LH	18	133-9145-03	1	Bumper-Groomer, LH
4	133-9101	1	Up-Quick, RH	19	133-9146-03	1	Bumper-Groomer, RH
5	133-9103	2	Cover-Up, Quick	20	4-2390	2	Washer-Flat
6	120-2938	2	Spring-Compression	21	133-7570	2	Nut-Flange, NI
7	137-0874	2	Bolt-Eye	22	62-7120	2	Washer
8	137-0828	2	Nut-Adjuster	23	98-5975	2	Washer-Belleville
9	137-0816	2	Spring-Detent	90	133-9171	1	Fairway Skid Kit (Univ Groomer) ●
10	131-1883	2	Screw-HSBH	90:1	133-9145-03	1	Bumper-Groomer, LH
11	3256-24	2	Washer-Flat ●	90:2	133-9146-03	1	Bumper-Groomer, RH
12	140-5523	2	Screw-HHF 5/8, Patch	90:3	119-3626	2	Screw-HH
13	48-9220	4	Washer-Plain	90:4	4-2390	2	Washer-Flat
14	104-8301	2	Nut-HF, NI				
15	120-2939	2	Spring-Compression				

● Optional Equipment



**Count on it.**