



Contour Following Kit

ProCore Aerators

Model No. 09154

Parts Catalog

Ordering Replacement Parts

To order replacement parts, please supply: the part number, the quantity, and the description of each part desired.

Understanding Reference Numbers

Each identified part in an illustration has a reference number. The reference number for a part also appears in the parts list, along with other information about the part.

This catalog uses two special reference number formats, one to indicate parts in a service assembly and another to indicate the quantity of a given part in an illustration.

Service Assembly Reference Numbers

Parts in service assemblies have reference numbers in the form **a:b**. The **a** represents the reference number of the entire service assembly and the **b** represents a sequential number unique to each part within the service assembly.

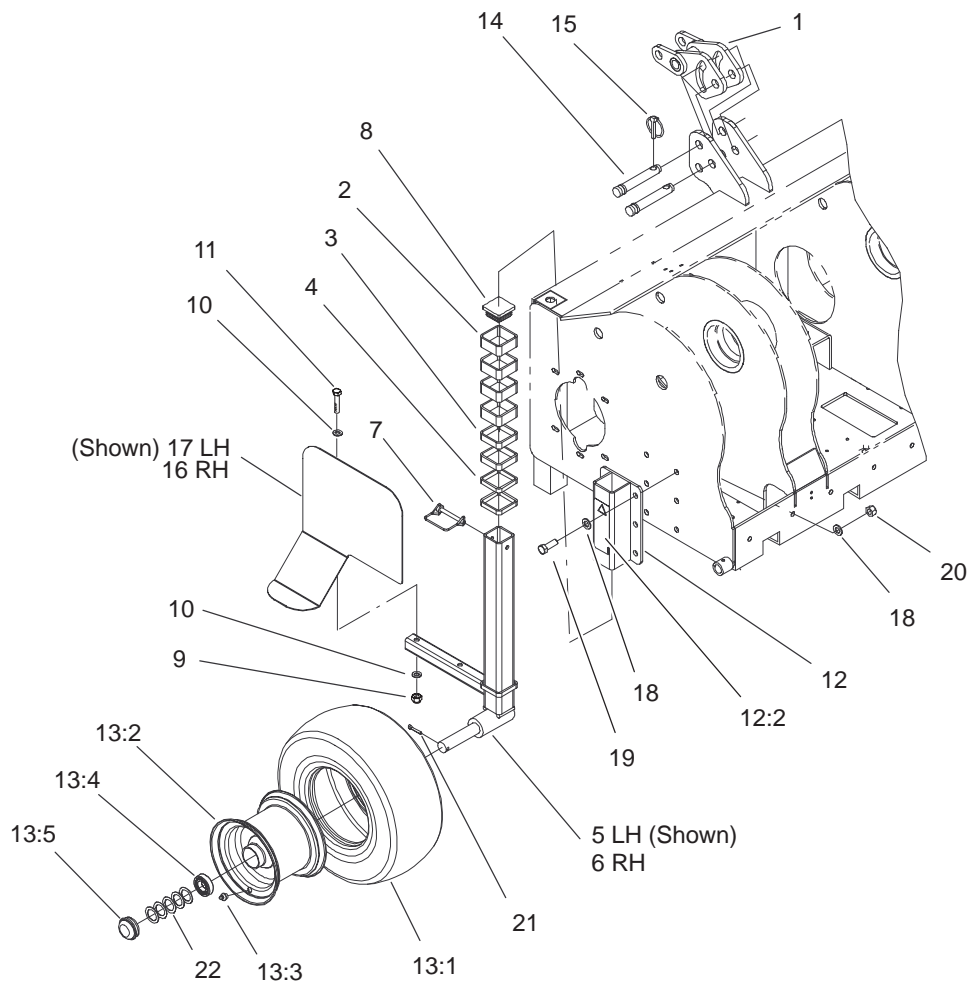
For example, a wheel assembly might be identified by reference number **6**, the tire by **6:1**, the valve by **6:2**, and the wheel by **6:3**. When you order the assembly identified by reference number **6**, you receive all parts identified by reference numbers **6:1**, **6:2**, and **6:3**. However, you may also order any part individually.

Reference numbers of this type appear in illustrations and in part lists.

Reference Numbers Indicating Quantity

In an illustration, if a reference number indicates more than one part, the reference number has the form **nX y**. The **n** represents the quantity of the part, the **X** is the multiplication symbol, and the **y** represents the reference number.

For example, in an illustration, the reference number **2X 37** means that two of the parts identified by reference number **37** are indicated.



Sheet No.:1

Contour Following Kit Assembly

Ref. No.	Part No.	Qty.	Description
1	104-0953	1	Link-Top Floating
2	104-0946	8	Spacer-25mm
3	104-0947	4	Spacer-15mm
4	104-9863	4	Spacer-10mm
5	104-0950-03	1	Leg-Contour
			Following, LH
*6	104-0983-03	1	Leg-Contour
			Following, RH
7	104-0945	2	Pin-Locking
8	104-0939	2	Cap-Plastic
9	33025-00	4	Nut-Lock
10	33095-00	8	Washer-Flat
11	33115-050	4	Screw-HH
12	104-9861	2	Mount-Leg
12:2	104-9862	1	Decal-Warning
☆13		2	Tire And Wheel ASM
13:1	104-9865	1	Tire
13:2	104-9866	1	Rim
13:3	232-27	1	Stem-Valve
13:4	104-9867	2	Bearing-Ball
13:5	104-0949	1	Cap-Wheel
14	100-5372	2	Pin-Top Link
15	100-5389	2	Pin-Lynch
*16	104-9856-03	1	Guard-Contour, RH
17	104-9850-03	1	Guard-Contour, LH
18	33096-00	24	Washer-Flat

Ref. No.	Part No.	Qty.	Description
19	33116-035	12	Screw-HH
20	33026-00	12	Nut-Lock
21	3272-21	2	Pin-Cotter
22	104-9864	10	Shim-Wheel

* Not illustrated

☆ Not serviced