



# Transmission Replacement Kit

Greensmaster® 1000 Series Mower

Model No. 140-9324

## Installation Instructions

# Installation

## Loose Parts

Use the chart below to verify that all parts have been shipped.

Procedure	Description	Qty.	Use
<b>1</b>	No parts required	–	Prepare the machine.
<b>2</b>	No parts required	–	Remove the control cover.
<b>3</b>	No parts required	–	Remove the brake cable and lever.
<b>4</b>	No parts required	–	Modify the upper-receiver weldment.
<b>5</b>	Brake lever Bushing Brake cable Clevis pin Cotter pin	1 2 1 1 1	Install the new brake cable and lever.
<b>6</b>	Transmission	1	Installing the transmission.
<b>7</b>	No parts required	–	Install the control cover.

# 1

## Preparing the Machine

No Parts Required

### Procedure

1. Park the machine on a level surface.
2. Shut off the machine.
3. Remove the spark-plug wire from the spark plug; refer to your machine *Operator's Manual*.

# 2

## Removing the Control Cover

No Parts Required

### Procedure

1. Disconnect the wire-harness connector from the hour meter ([Figure 1](#)).



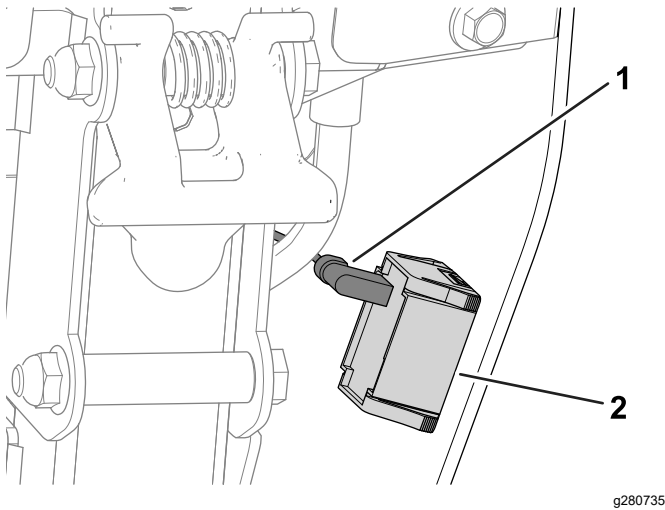
# 3

## Removing the Brake Cable and Lever

No Parts Required

### Procedure

1. Remove the brake cable (Figure 3) from the brake lever shaft on the transmission gear box assembly as follows:
  - A. Loosen the front cable jam nut (Figure 3) that secures the brake cable to the casting slot on the transmission assembly. Remove the brake cable from the slot.
  - B. Remove the retaining ring that secures the cable eyelet to the brake lever on the transmission assembly (Figure 3).
  - C. Remove the brake cable eyelet from the brake lever (Figure 3).

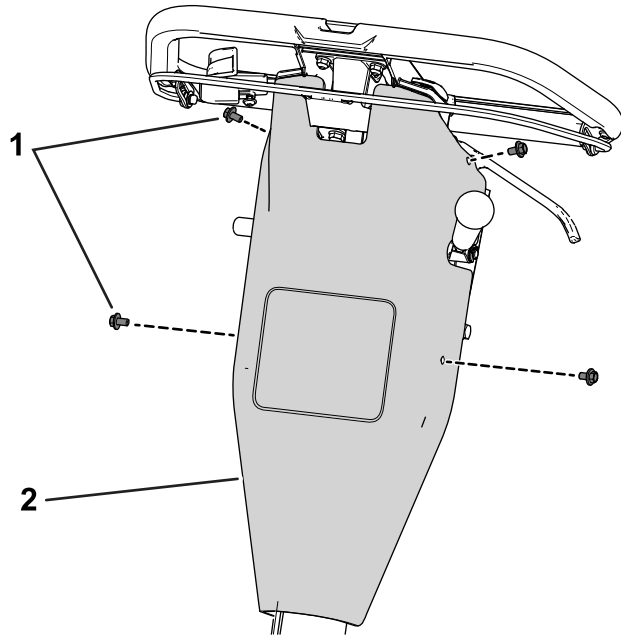


g280735

Figure 1

1. Wire-harness connector
2. Hour meter

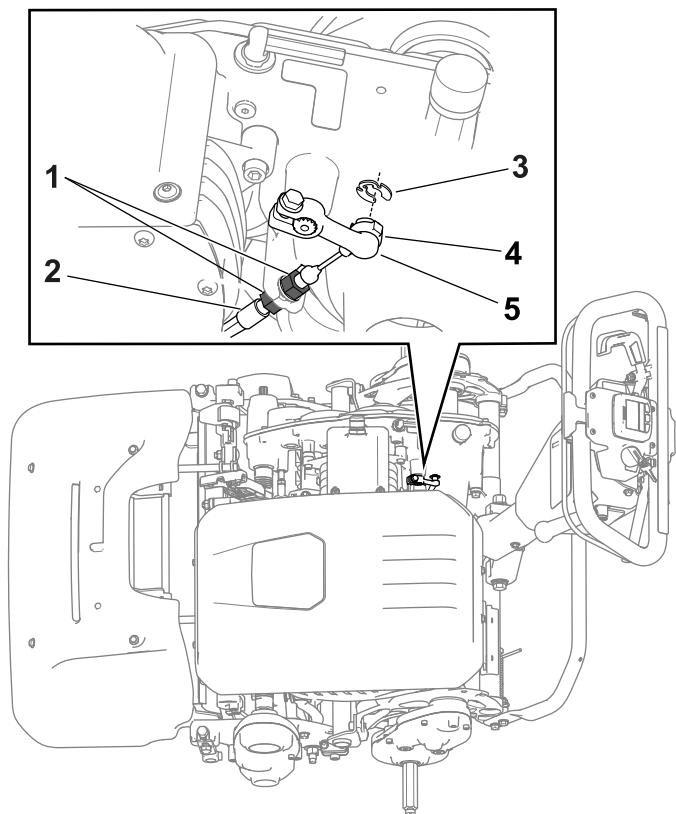
2. Remove the control cover by removing the screws that secure the control cover to the rear panel (Figure 2).



g280734

Figure 2

1. Screw
2. Control cover



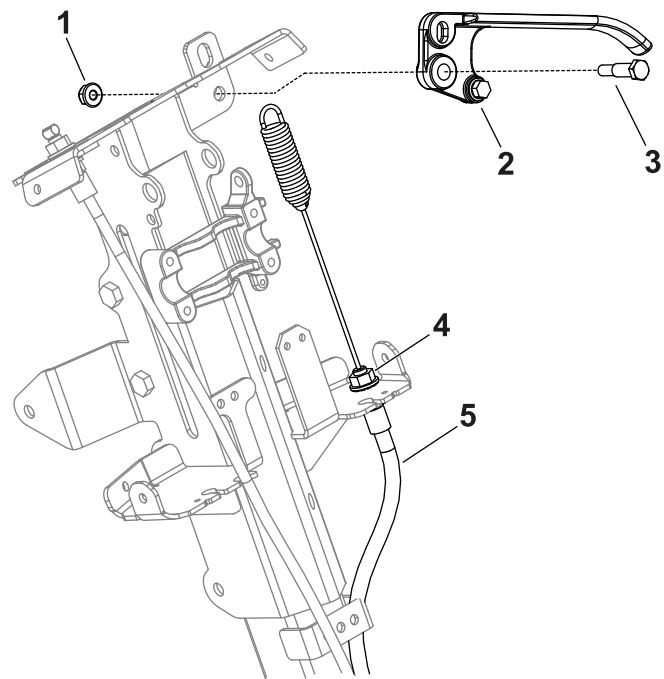
**Figure 3**

Model 04861 shown

- |                   |                 |
|-------------------|-----------------|
| 1. Jam nuts       | 4. Cable eyelet |
| 2. Brake cable    | 5. Brake lever  |
| 3. Retaining ring |                 |

2. Remove the brake cable from the brake lever as follows:

- A. Loosen a brake-cable jam nut ([Figure 4](#)) that secures the brake cable to the upper-receiver weldment. Slide the brake cable from the upper-receiver weldment.
- B. Remove the brake-cable spring from the spring anchor on the brake lever. Note the orientation of the brake-cable spring hook on the brake lever for assembly.



**Figure 4**

g343372

- |                  |                |
|------------------|----------------|
| 1. Nut           | 4. Jam nut     |
| 2. Brake handle  | 5. Brake cable |
| 3. Shoulder bolt |                |

3. Remove the brake cable from the machine.

**Note:** You may discard the brake cable.

4. Remove the shoulder bolt and nut that secures the brake lever to the upper-receiver weldment ([Figure 4](#)).

Retain the shoulder bolt and nut for the installation of the new lever.

# 4

## Modifying the Upper-Receiver Weldment

Traction Units with Serial Number 4080000 and Below

No Parts Required

### Procedure

For traction units with a serial number of 4080000 or below, remove the area of the upper receiver weldment as shown in [Figure 5](#).

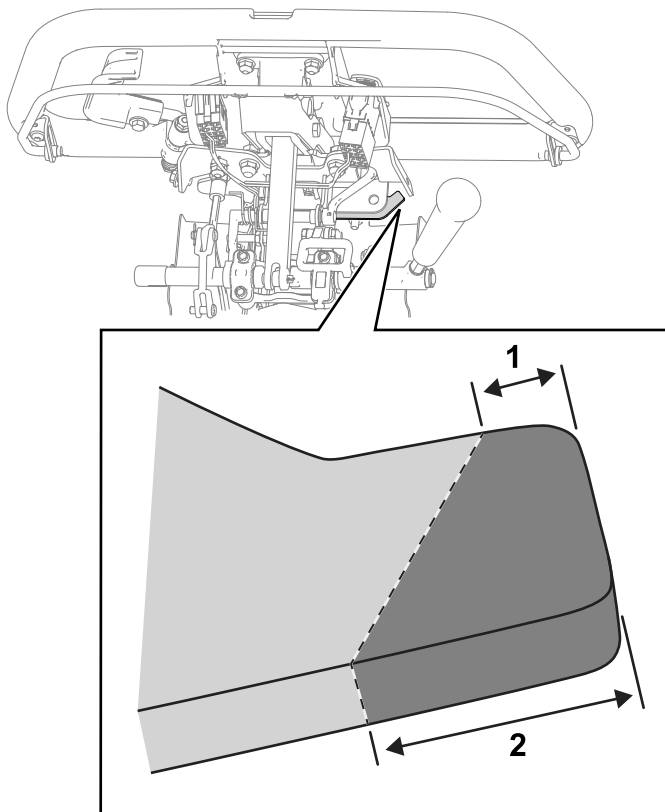


Figure 5

1. 3.2 mm (1/8 inch)
2. 9.5 mm (3/8 inch)

# 5

## Installing the New Brake Cable and Lever

Parts needed for this procedure:

1	Brake lever
2	Bushing
1	Brake cable
1	Clevis pin
1	Cotter pin

### Installing the New Brake Lever

1. Install 2 bushings to the brake lever ([Figure 6](#)).

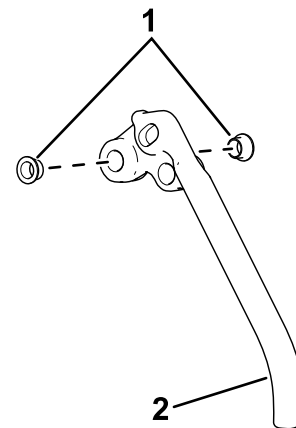
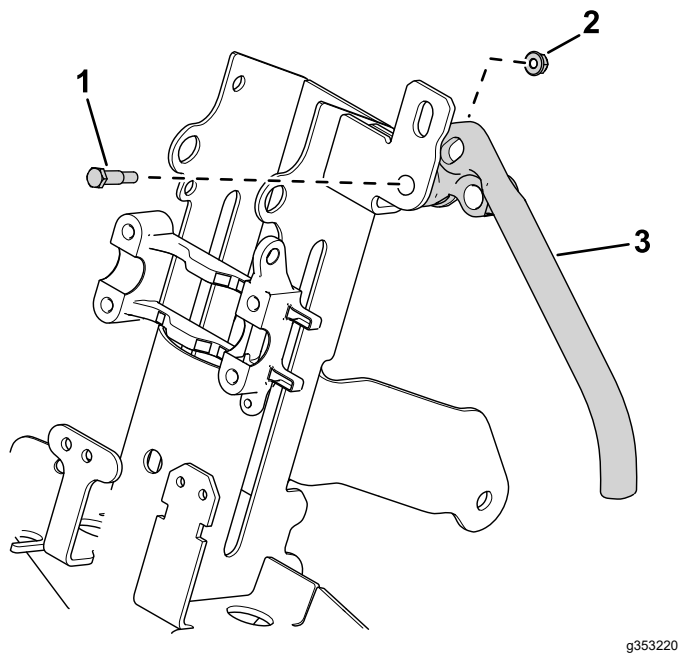


Figure 6

1. Bushings
2. Brake lever

2. Use the previously removed shoulder bolt and nut to secure the brake lever to the upper-receiver weldment ([Figure 7](#)).

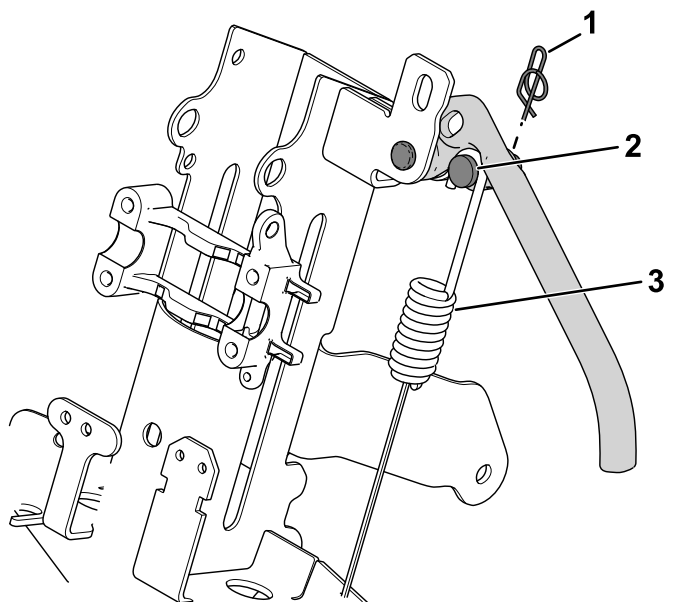


**Figure 7**

1. Shoulder bolt
2. Nut
3. Brake lever

## Installing the New Brake Cable

1. Secure the brake cable to the brake lever assembly as follows:
  - A. Install the brake-cable spring to the clevis pin on the brake lever ([Figure 7](#)).



**Figure 8**

1. Large cotter pin
2. Clevis pin
3. Brake-cable spring

- B. Slide the brake cable into the slot on the upper-receiver weldment [[Figure 4](#) in [3 Removing the Brake Cable and Lever \(page 2\)](#)].
  - Ensure that the jam nut, flat washer, and lock washer are both sides of the bracket.
  - Adjust the jam nuts so that an equal amount of cable threads are visible above and below the jam nuts.
  - Leave the jam nuts snug until the final brake-cable adjustment.

2. Route the brake cable towards the transmission.  
The cable will be installed to the transmission in the following procedure.

# 6

## Installing the Transmission

Parts needed for this procedure:

1	Transmission
---	--------------

## Removing the Existing Transmission

For instructions to remove the transmission, refer to the Removing the Transmission Gear Box Assembly procedure in your traction unit *Service Manual*.

## Installing the Transmission

For instructions to install the transmission, refer to the Removing the Transmission Gear Box Assembly procedure in your traction unit *Service Manual*.

# 7

## Installing the Control Cover

No Parts Required

### Procedure

Refer to the illustrations in [2 Removing the Control Cover \(page 1\)](#) for this procedure.

1. Use the previously-removed screws to install the control cover.
2. Connect the wire-harness connector to the hour meter.

**Notes:**



**Count on it.**