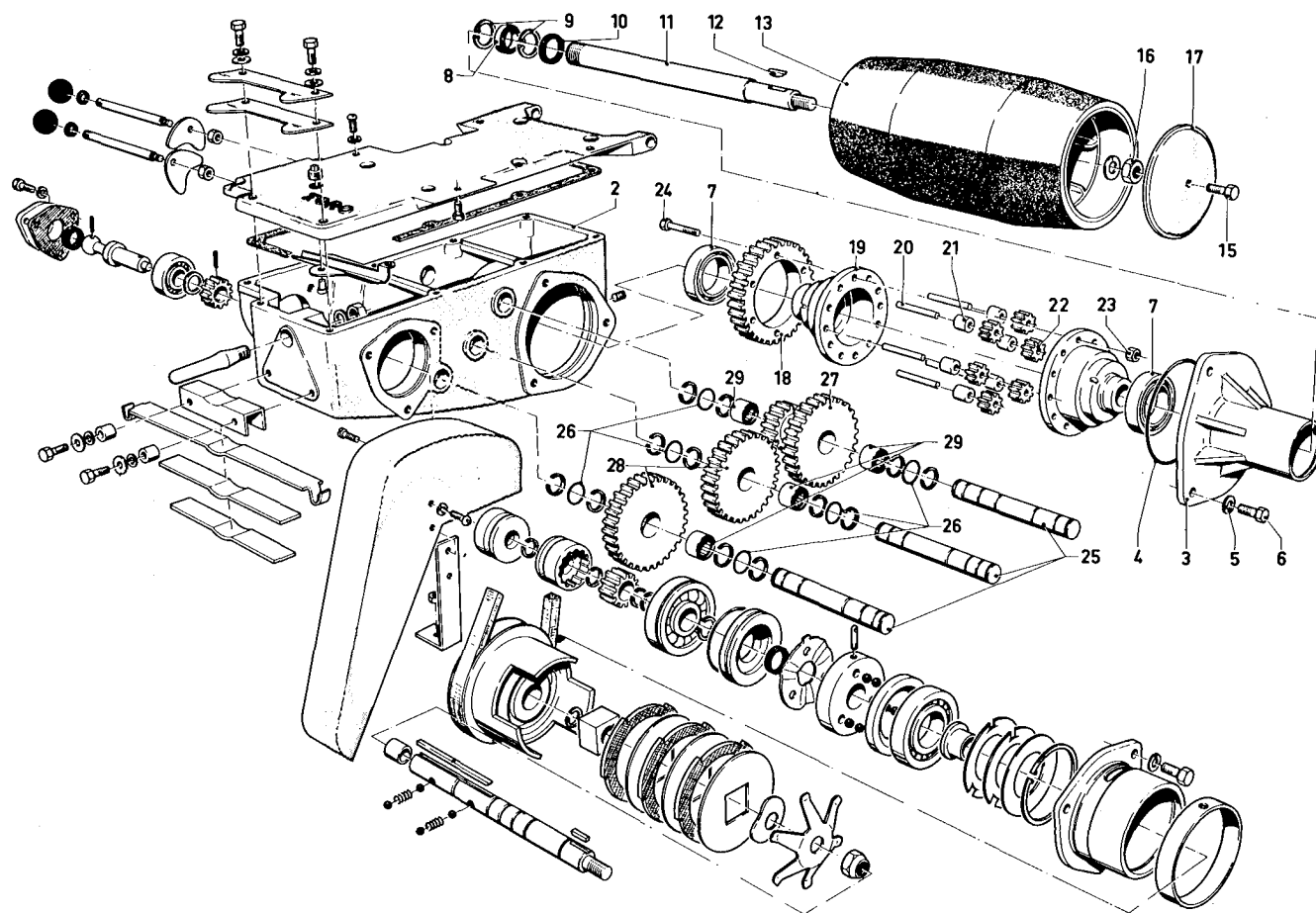


TORO®

MODEL NO. 04128 — 70001 THRU 80001 & UP
 MODEL NO. 04215 — 70001 THRU 80001 & UP

PARTS CATALOG

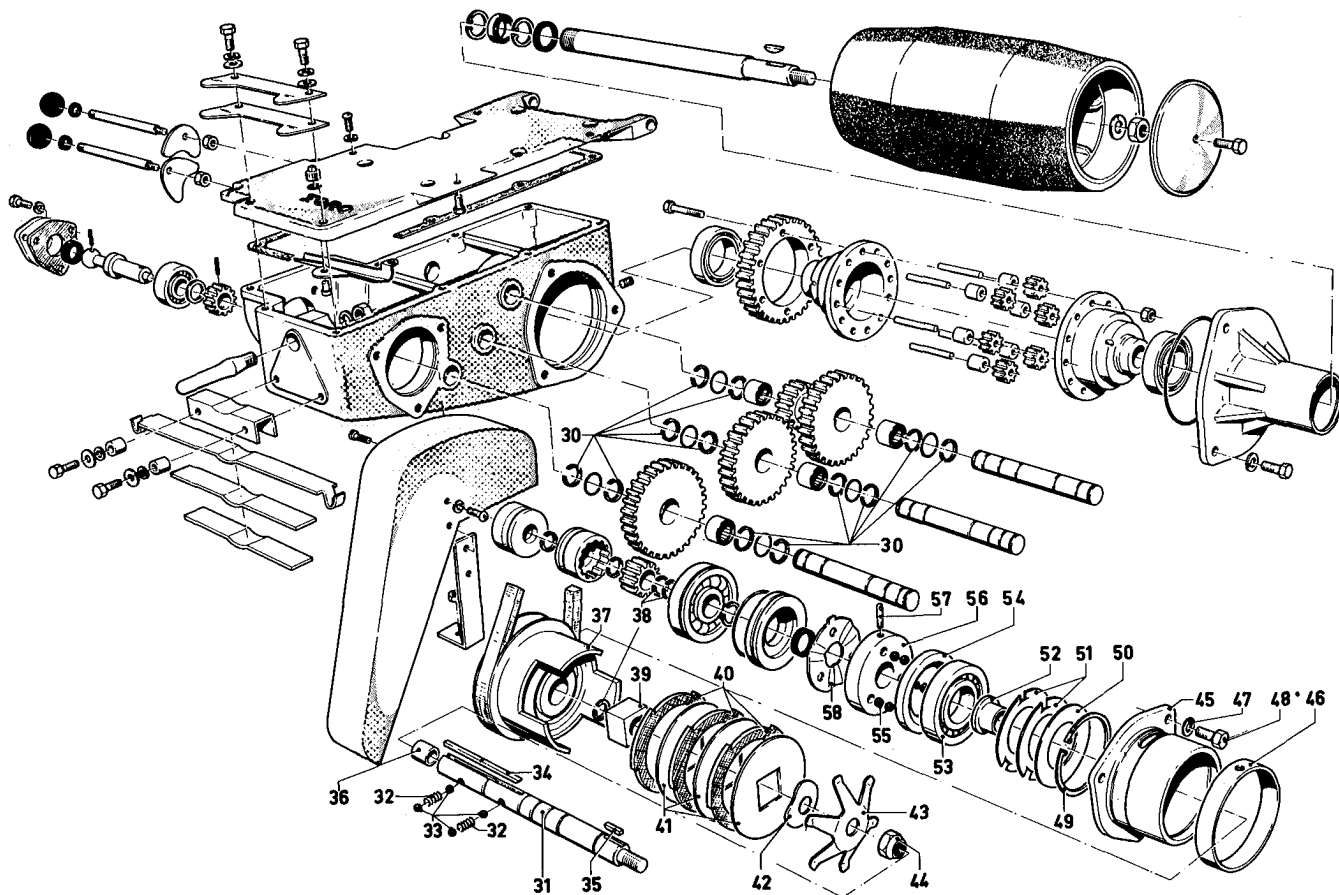
21" GREENSMASTER®



TRANSMISSION CASE ASSEMBLY

Ref. No.	Part No.	Description	No. Used
2	4-4549	Transmission Case	1
3	3-0596	Axle Housing	2
4	237-33	"O" Ring	2
5	3253-4	Lockwasher	6
6	322-4	Screw	6
7	251-138	Ball Bearing	2
8	251-137	Ball Bearing	2
9	32120-62	Retaining Ring	4
10	253-82	Oil Seal	2
11	3-8392	Axle	2
12	3257-23	Key, Hy-Pro	2
13	3-0492	Roller	2
15	32108-51	Screw	2
16	3296-19	Locknut	2

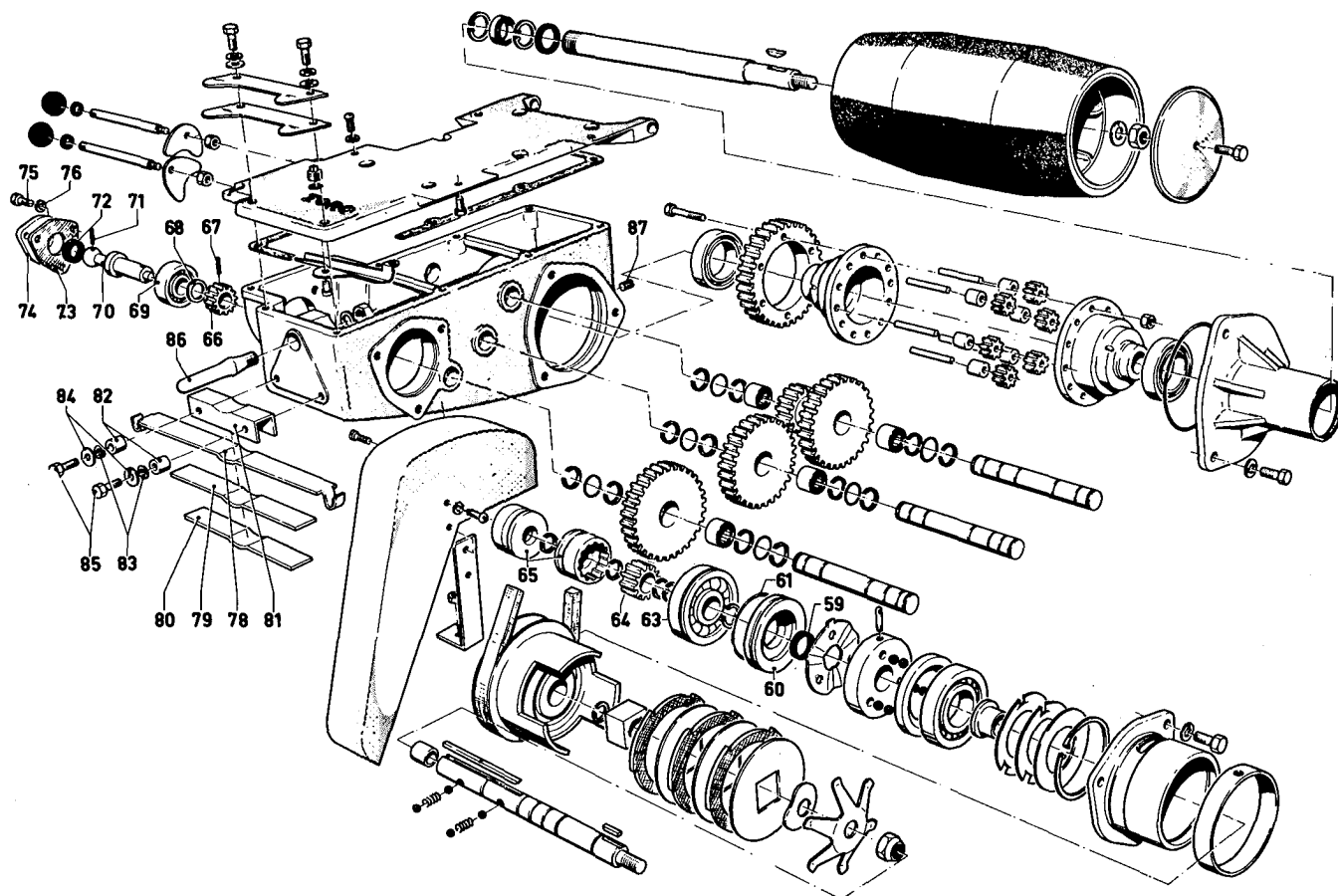
Ref. No.	Part No.	Description	No. Used
17	3-8347	Hub Cap	2
18	3-0454	Ring Gear	1
19	3-0450	Differential Carrier	2
20	3-0452	Shaft	6
21	3-0453	Spacer	6
22	3-3858	Differential Gear	6
23	3296-27	Locknut	6
24	3273-23	Screw, Socket Head	6
25	3-0455	Idler Shaft	3
26	237-22	"O" Ring	6
27	3-0457	Intermediate Gear	1
28	3-0456	Idler Gear	2
29	252-49	Bearing	4



TRANSMISSION CASE ASSEMBLY (Continued)

Ref. No.	Part No.	Description	No. Used
30	32120-63	Retaining Ring	12
31	1-9119	Clutch Shaft	1
32	3-0460	Detent Spring	2
33	255-5	Ball	4
34	3-0591	Key	1
35	3-6801	Key	1
36	256-112	Bushing	1
37	3-0480	Clutch Pulley	1
38	32120-64	Retaining Ring	6
39	3-0472	Clutch Driver	1
40	3-0514	Friction Disc	3
41	3-0477	Clutch Plate	3
42	3290-211	Spring Washer	1
43	3-0478	Clutch Spring	1
44	3296-6	Locknut	1

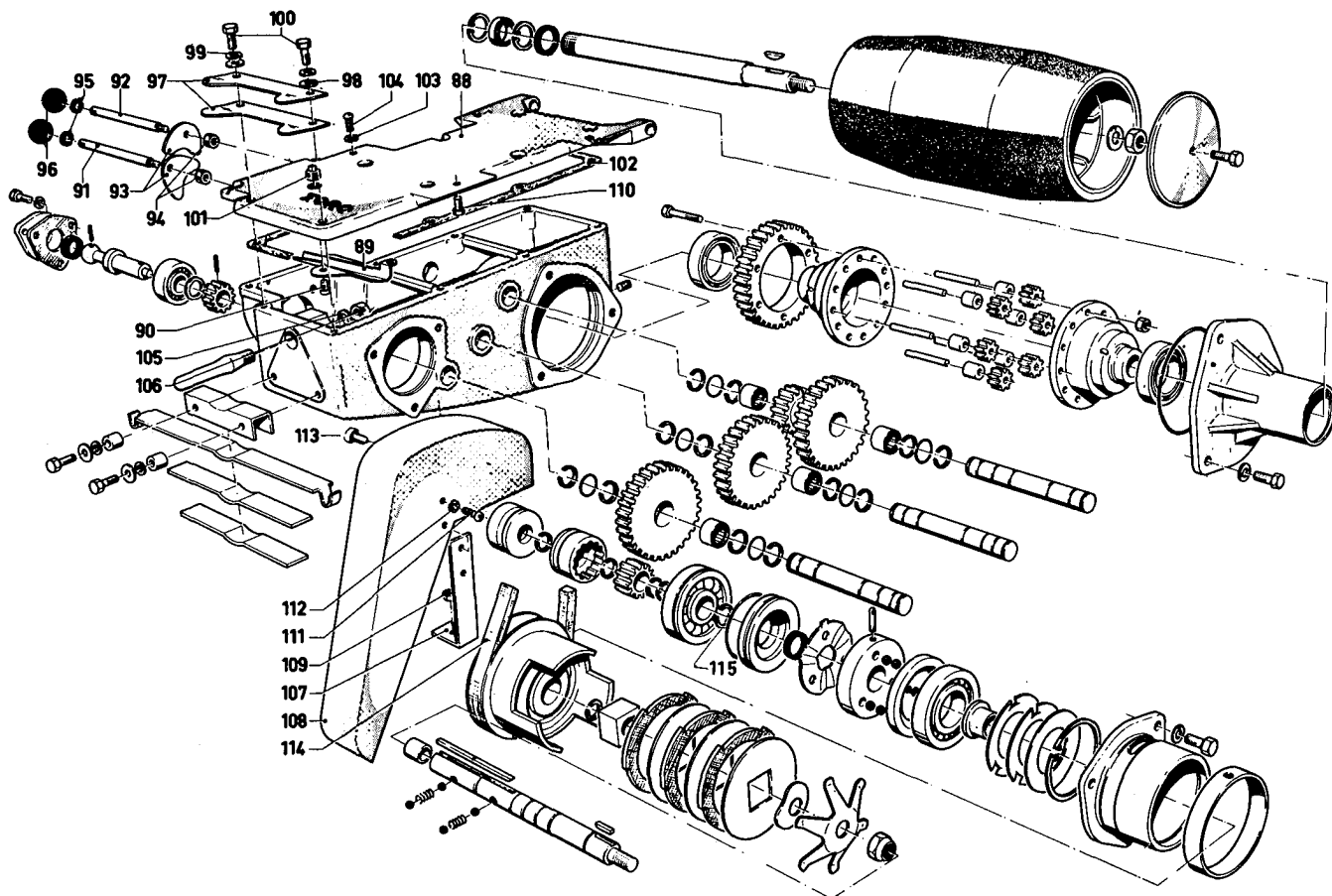
Ref. No.	Part No.	Description	No. Used
45	5-1423	Clutch Housing	1
46	5-1388	Clutch Cover	1
47	3253-3	Lockwasher	3
48	321-3	Screw	3
49	32120-65	Retaining Ring	1
50	3-0481	Clutch Washer	1
51	3290-264	Wave Washer	2
52	3-4066	Bushing	1
53	251-140	Ball Bearing	1
54	3-0471	Backing Plate	1
55	255-8	Ball	6
56	3-0470	Clutch Actuator	1
57	3-0475	Clutch Pin	1
58	3-0467	Clutch Cam	1



TRANSMISSION CASE ASSEMBLY (Continued)

Ref. No.	Part No.	Description	No. Used
59	253-83	Oil Seal	1
60	3-1545	Clutch Spacer	1
61	237-38	"O" Ring	1
63	251-139	Ball Bearing	1
64	3-0461	Drive Pinion	1
65	3-0465	Clutch Female	2
66	3-0592	Reel Clutch Male	1
67	32121-4	Roll Pin	1
68	3-4494	Thrust Washer	1
69	251-163	Ball Bearing	1
70	2-4779	Universal Driver	1
71	32121-25	Roll Pin	1
72	253-59	Oil Seal	1
73	3-2072	Gasket	1

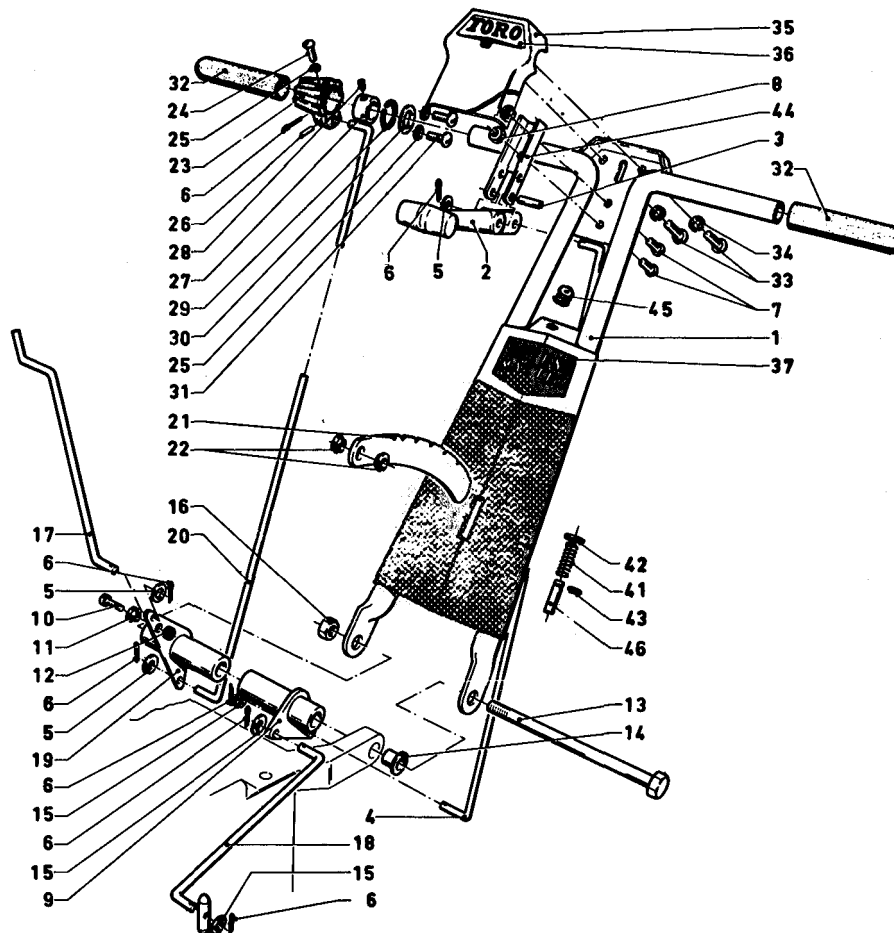
Ref. No.	Part No.	Description	No. Used
74	3-2068	Bearing Cover	1
75	32140-40	Screw	3
76	3253-17	Lockwasher	3
78	3-2552	Main Leaf	1
79	3-2078	Center Leaf	1
80	3-2075	Lower Leaf	1
81	3-2077	Spring Bracket	1
82	3-2074	Spacer	2
83	3254-2	Washer	2
84	3256-23	Washer	2
85	322-8	Screw	2
86	3-2154	Yoke Pivot	1
87	281-1	Pipe Plug	1



TRANSMISSION CASE ASSEMBLY (Continued)

Ref. No.	Part No.	Description	No. Used
88	3-1775	Transmission Cover	1
89	3-1716	Oil Trough	1
90	3295-2	Rivet	2
91	3-0486	Reel Clutch Rod	1
92	3-0487	Traction Clutch Rod	1
93	3-0488	Shift Fork	2
94	32146-4	Locknut	2
95	253-88	Oil Seal	2
96	3-0631	Ball Grip	2
97	3-1830	Stabilizer Spring	2
98	3256-2	Cut Washer	2
99	3253-3	Lockwasher	2
100	321-11	Capscrew	2
101	281-3	Pipe Plug, Square Head	1

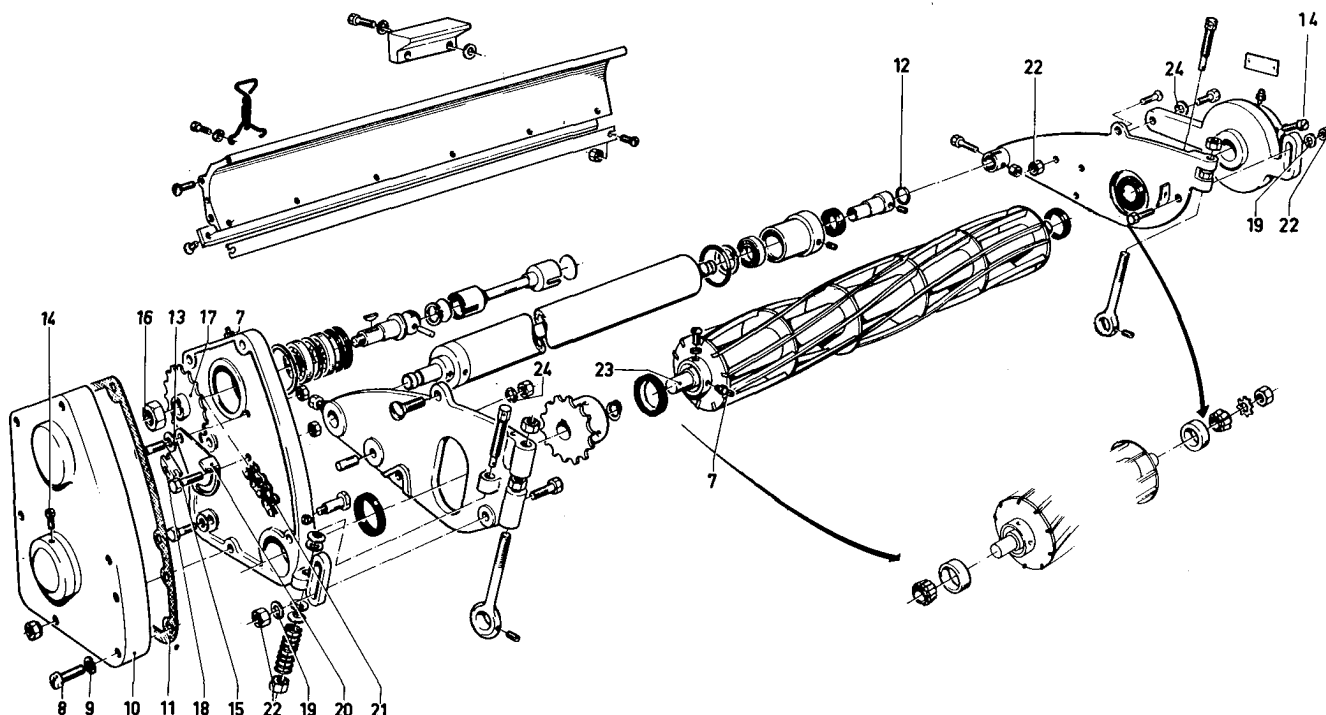
Ref. No.	Part No.	Description	No. Used
102	3-0485	Gasket	1
103	3253-3	Lockwasher	11
104	3258-19	Screw	8
105	3256-26	Washer	3
106	3296-28	Locknut	1
107	3-0995	Bracket, Guard	1
108	3-0997	Belt Guard	1
109	3296-29	Locknut	1
110	322-5	Screw	1
111	32122-26	Screw	2
112	3253-17	Lockwasher	2
113	237-37	Grommet	1
114	3-2251	Belt	1
115	251-149	Snap Ring	1



CONTROLS

Ref. No.	Part No.	Description	No. Used
1	5-9700	Handle	1
2	3-0516	Clutch Control Lever	1
3	32121-4	Roll Pin	1
4	3-3422	Rod, Clutch Control	1
5	3256-22	Washer	2
6	3272-1	Cotter Key	3
7	3291-5	Screw	2
8	3296-27	Locknut	2
9	3-0525	Bell Crank Assy., Clutch	1
10	3250-4	Screw	1
11	3-0526	Retainer, Throttle Wire	1
12	3296-1	Locknut	1
13	323-30	Screw	1
14	3-1776	Grommet	2
15	3256-14	Washer	3
16	32146-2	Nut, Lock	1
17	23-7410	Throttle Wire	1
18	3-0520	Clutch Rod	1
19	3-0530	Bell Crank	1
20	3-3418	Rod, Throttle Control	1
21	5-1978	Adj. Bar, Handle	1
22	3-0616	Grommet	2

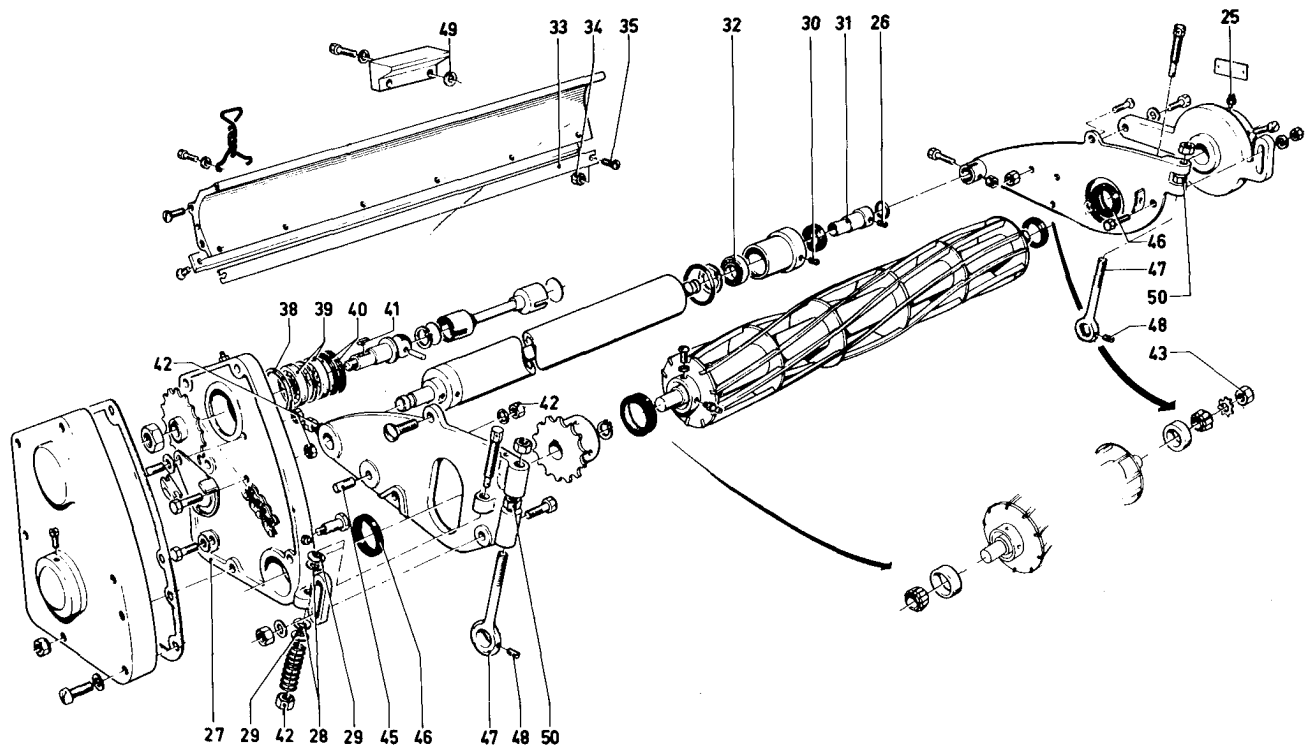
Ref. No.	Part No.	Description	No. Used
23	3-3417	Throttle Control	1
24	3290-130	Screw	1
25	3254-9	Lockwasher	3
26	32121-7	Roll Pin	1
27	3-3421	Collar	1
28	3245-2	Set Screw	1
29	32120-74	Snap Ring	1
30	3-3423	Washer	1
31	3249-3	Screw	2
32	3-3416	Handle Grip	2
33	3251-4	Screw	2
34	3253-17	Lockwasher	2
35	3-0508	Cover Plate	1
36	3-1541	Decal	1
37	3-0635	Decal	1
41	5-0776	Spring, Handle Adj.	1
42	3256-23	Washer	1
43	32120-35	Snap Ring	1
44	3-0517	Bracket	1
45	237-73	Grommet	2
46	5-0765	Pin, Handle Adj.	1



CUTTING UNIT ASSEMBLY

Ref. No.	Part No.	Description	No. Used
7	302-5	Grease Fitting	3
8	3252-9	Screw	5
9	3253-17	Lockwasher	5
10	3-2964	Cover	1
11	3-2052	Gasket	1
12	237-69	"O" Ring	2
13	3256-22	Washer	2
14	3274-26	Setscrew	2
15	329-3	Screw	2

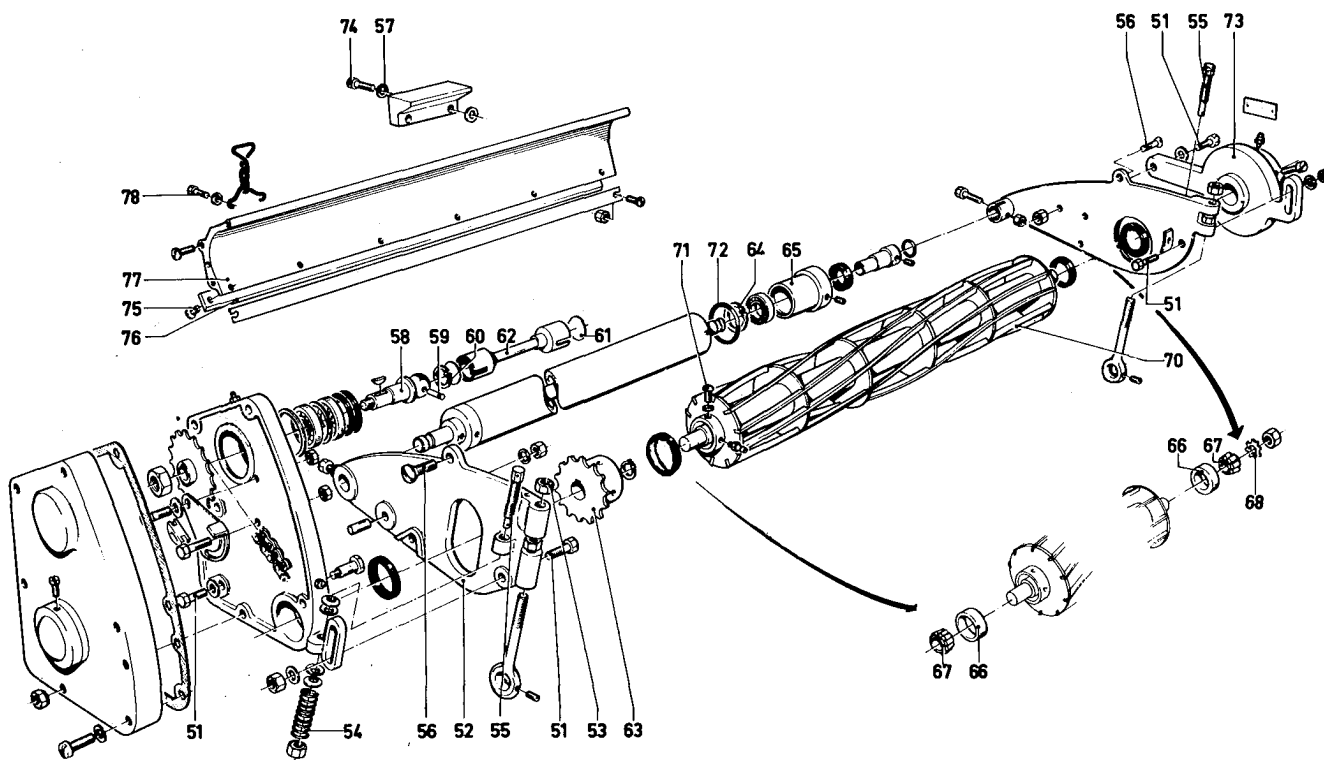
Ref. No.	Part No.	Description	No. Used
16	3296-33	Locknut	1
17	3-3433	Sprocket	1
18	3-0554	Shoe-Chain Idler	1
19	3-5792	Washer	2
20	3-0463	Idler Arm	1
21	3-3434	Chain	1
22	3296-3	Nut	2
23	5-1393	Reel Shaft	1
24	3256-22	Washer	4



CUTTING UNIT ASSEMBLY (Continued)

Ref. No.	Part No.	Description	No. Used
25	302-14	Pressure Relief	2
26	3245-35	Setscrew	2
27	3-5786	Reel Bracket - Right	1
28	3-0566	Spherical Washer - Concave	4
29	3-0565	Spherical Washer - Convex	4
30	285-10	Pipe Plug	2
31	11-3050	Sleeve	2
32	251-205	Bearing	2
33	3-2057	Grass Shield	1
34	3296-13	Locknut	2
35	3258-61	Rd. Hd. Machine Screw	2
38	32120-42	Retaining Ring	1

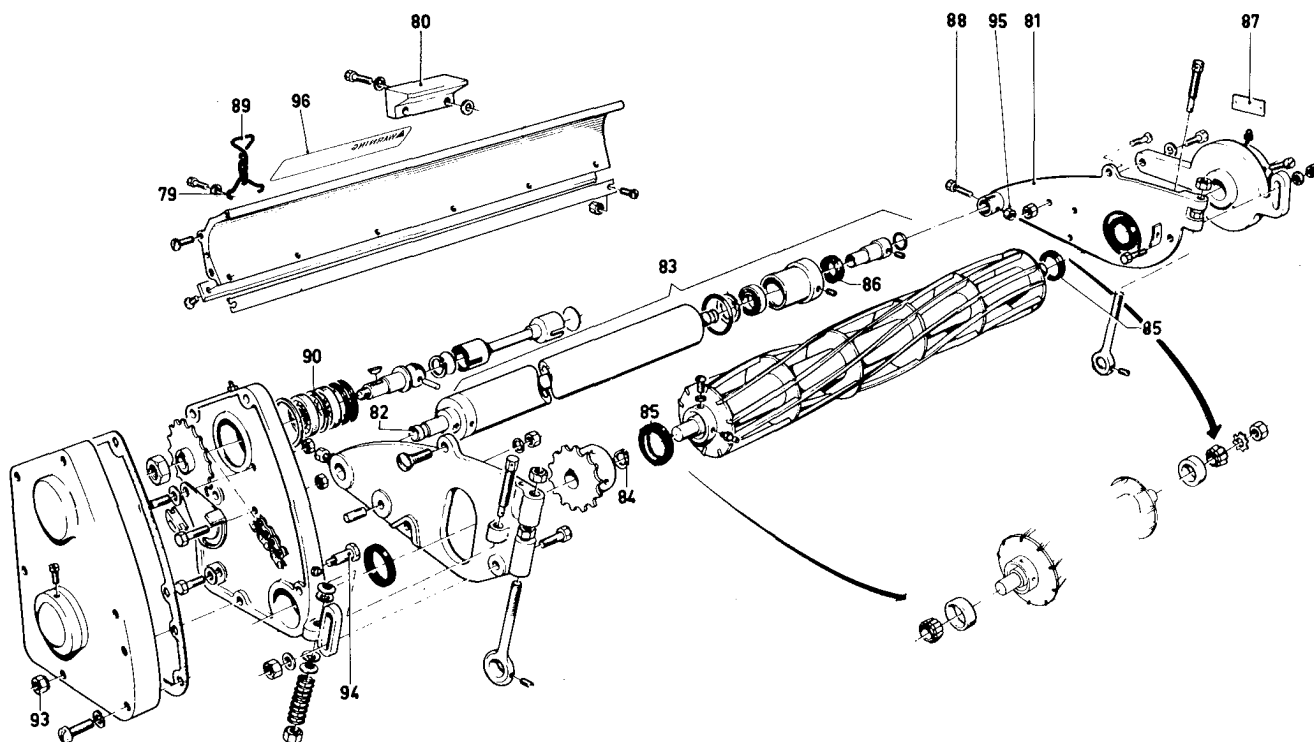
Ref. No.	Part No.	Description	No. Used
39	251-6	Ball Bearing	2
40	253-59	Oil Seal	2
41	3-2804	Key	1
42	3296-13	Locknut	6
43	254-86	Locknut	1
45	3-5797	Spacer	2
46	253-92	Oil Seal	2
47	3-5785	Adjusting Screw	2
48	3245-7	Setscrew	2
49	3256-22	Washer	2
50	3217-9	Nut	2



CUTTING UNIT ASSEMBLY (Continued)

Ref. No.	Part No.	Description	No. Used
51	329-13	Screw	4
52	3-5784	Side Plate - Right	1
53	3296-45	Nut	2
54	3-5787	Spring	2
55	3-5793	Screw	2
56	3290-141	Screw	6
57	3253-3	Lockwasher	6
58	2-0039	Universal Driver	1
59	32121-25	Roll Pin	1
60	32120-69	Snap Ring	1
61	3-1852	Pad	2
62	3-0584	Universal Shaft	1
63	3-5802	Sprocket	1
64	32151-13	Snap Ring	2

Ref. No.	Part No.	Description	No. Used
65	5-1384	Bearing Housing	2
66	254-67	Bearing Cup	2
67	254-68	Bearing Cone	2
68	254-87	Lockwasher	1
70	4-2219	Reel Assy.	1
71	3274-29	Screw	4
72	237-68	"O" Ring	2
73	3-6524	Reel Bracket - Left	1
74	321-8	Screw	2
75	3-6462	Screw - Bedknife	6
76	3-5794	Bedknife	1
77	3-0601	Guard	1
78	3258-2	Screw	4

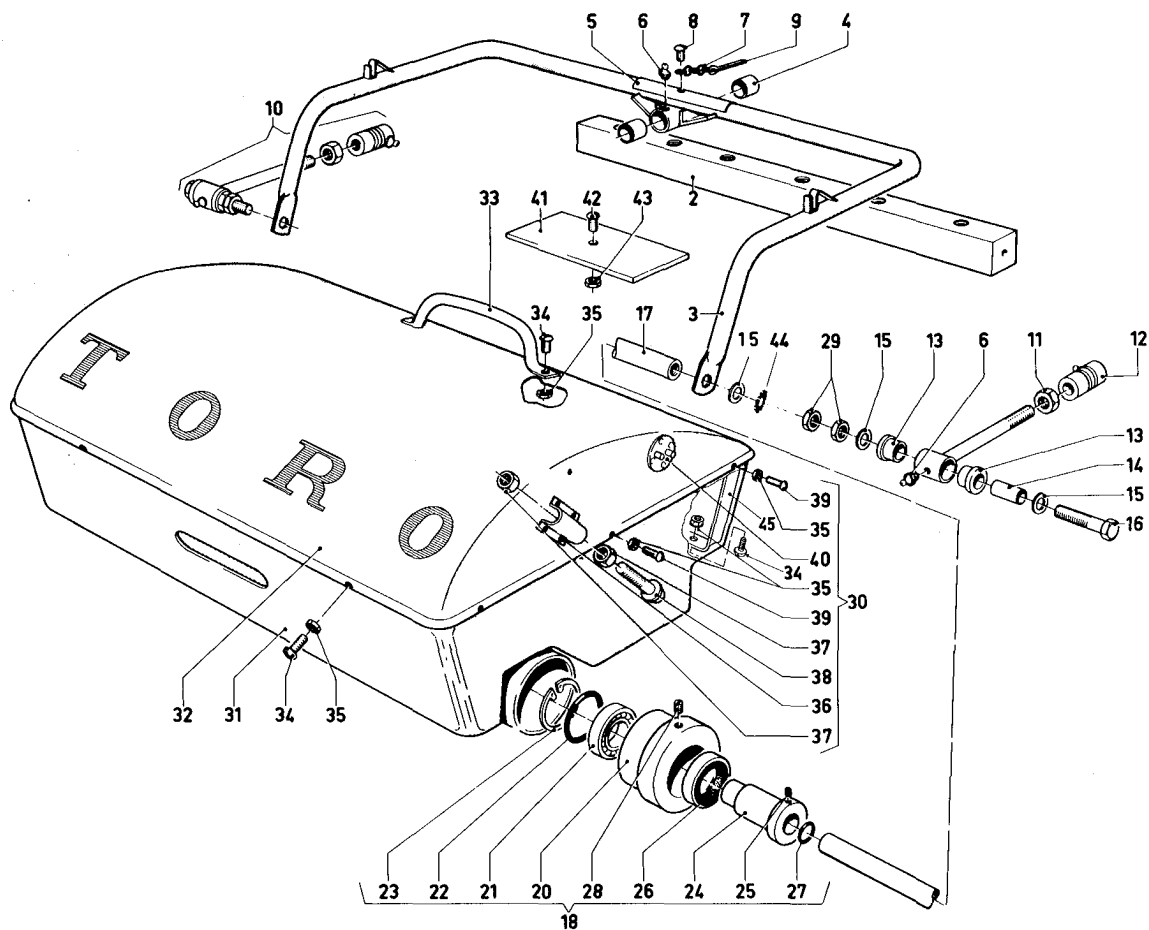


CUTTING UNIT ASSEMBLY (Continued)

Ref. No.	Part No.	Description	No. Used
79	3-0988	Lift Bale	2
80	3-4981	Weight	1
81	3-5783	Side Plate - Left	1
82	5-0536	Roller Shaft	1
83	5-1383	Roller Assy.	1
84	32151-12	Snap Ring	1
85	253-120	Oil Seal	2
86	253-118	Oil Seal	2
87	3-3964	Decal	1

Ref. No.	Part No.	Description	No. Used
88	321-9	Screw	2
89	3-2551	Chain - Reel Lift	2
90	3-3428	Washer	1
93	3-3554	Special Nut	2
94	3-3553	Special Bolt	2
95	32146-7	Locknut	2
96	27-5560	Decal Warning	1
*	2710-31	Connecting Link	1

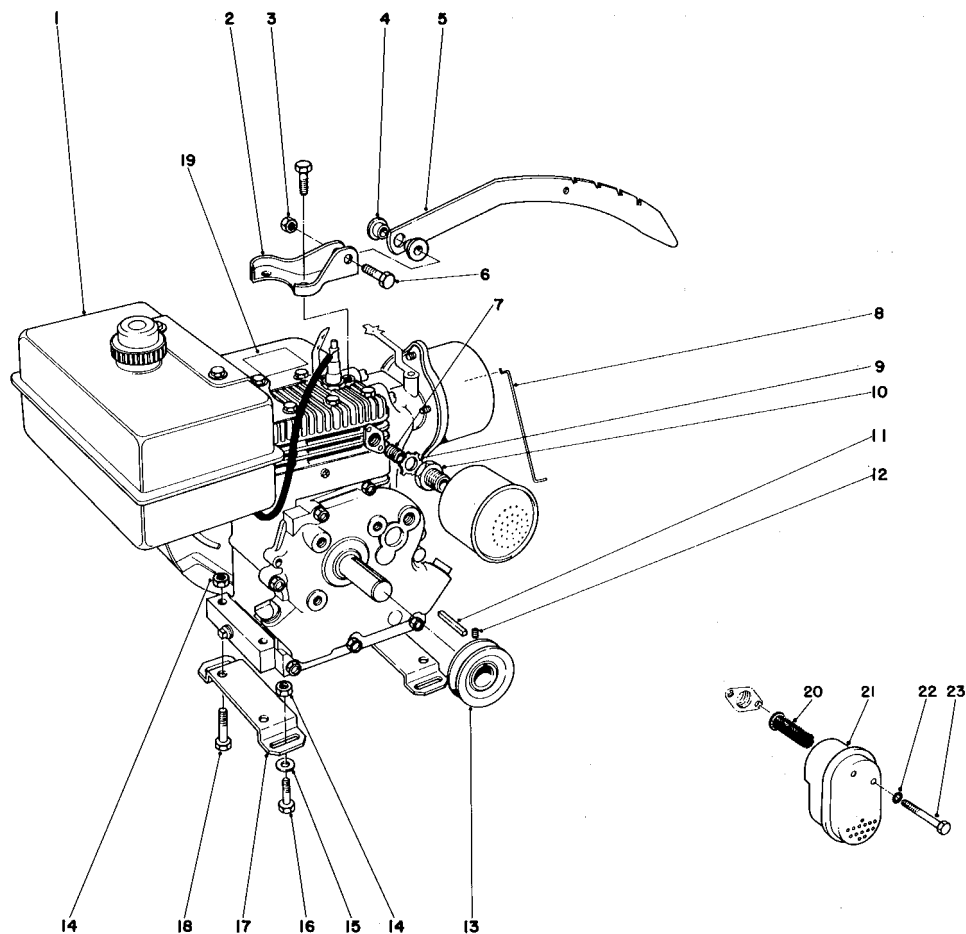
* Not Illustrated



BASKET AND YOKE ASSEMBLY

Ref. No.	Part No.	Description	No. Used
2	3-1397	Grinding Bar	1
3	1-9799	Yoke Assy. (Incl. Ref. #4)	1
4	3-2156	Bushing	2
5	3-1828	Wear Plate	1
6	302-5	Zerk Fitting	2
7	3-0696	Chain, Yoke	1
8	32104-81	Screw, Self Tap	1
9	3270-50	Cotter Pin	1
10	3-4510	Pull Arm Assy. (Incl. Ref. #6, 13-16, 15 and 29)	2
11	3220-3	Nut, Jam	2
12	8-7710	Ball Joint	2
13	3-1506	Bushing	4
14	3-3436	Spacer	2
15	3256-24	Washer	6
16	8-5770	Screw - Special	2
17	5-1390	Roller Shaft, Front	1
18	5-1382	Roller Assy., Long	1
20	5-1384	Bearing Housing	2
21	251-205	Bearing	2
22	237-68	"O" Ring	2
23	32151-13	Snap Ring	2

Ref. No.	Part No.	Description	No. Used
24	11-3050	Sleeve	2
25	3245-35	Set Screw	2
26	253-118	Oil Seal	2
27	237-69	"O" Ring	2
28	285-10	Pipe Plug	2
29	3220-3	Nut	4
30	2-5929	Grass Basket Assy.	1
31	3-3467	Grass Basket, Bottom	1
32	3-3466	Grass Basket, Top	1
33	3-3468	Handle	1
34	32122-30	Screw	22
35	3290-148	Nut	33
36	5-3464	Adjusting Bracket	2
37	3218-2	Nut	4
38	32141-36	Adjusting Screw	2
39	32122-32	Screw	11
40	3-4590	Pivot	2
41	1-8789	Gauge Bar (Incl. Ref. #42 & 43)	1
42	32122-22	Screw	1
43	3219-14	Jam Nut	1
44	3254-6	Lockwasher	2
45	3-3908	Support Bracket	1



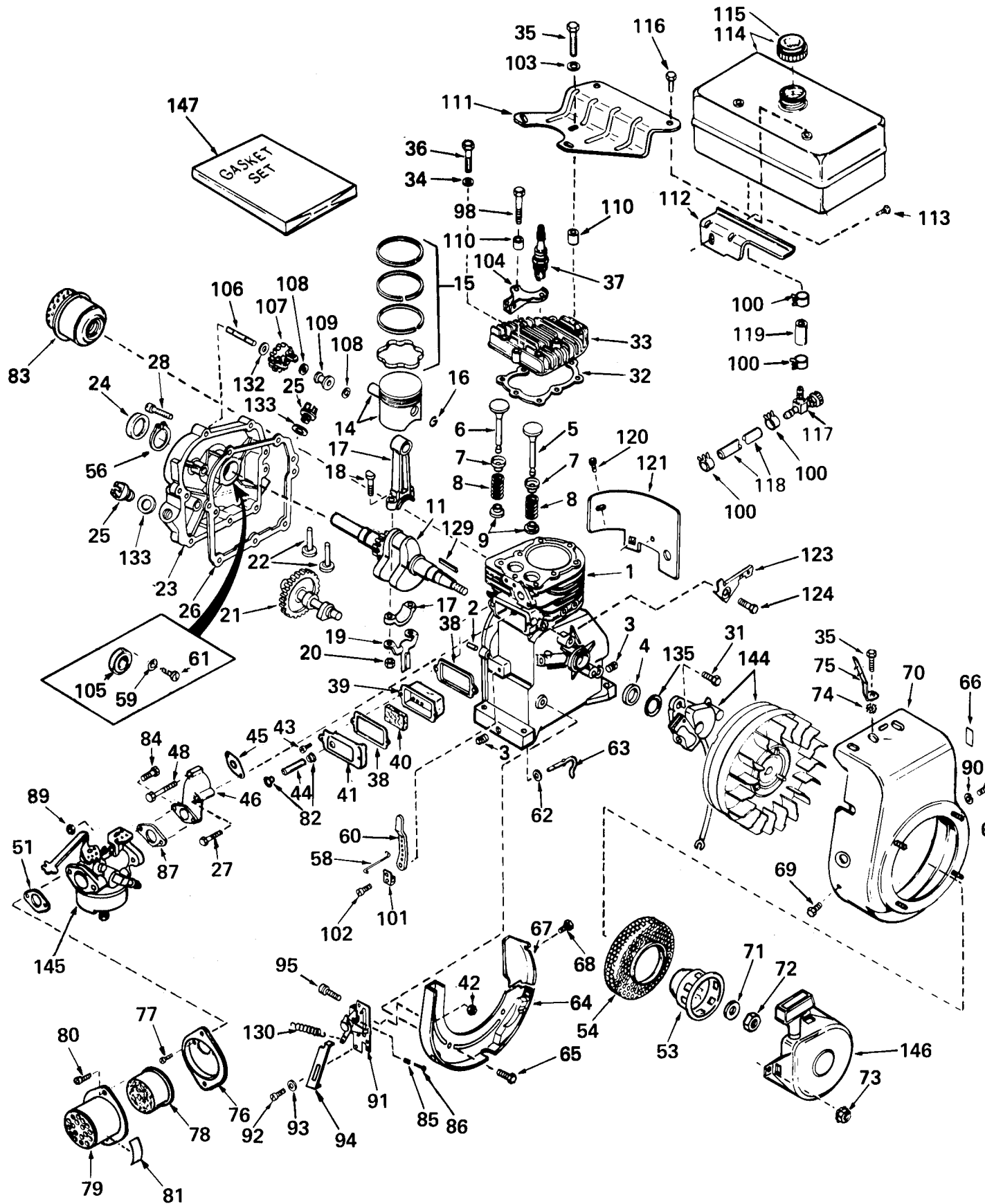
ENGINE ASSEMBLY

Ref. No.	Part No.	Description	No. Used
1	221-551	Engine	1
2	3-0593	Bracket	1
3	32146-5	Locknut	1
4	3-0616	Grommet	2
5	5-1978	Handle Adjustment Bar	1
6	322-6	Capscrew	1
7	289-29	Pipe Nipple	1
8	23-7410	Throttle Wire	1
9	3290-153	Locknut Conduit	1
10	2812-4	Reducer Bushing	1
11	5-1077	Square Key	1
12	3245-32	Set Screw	1
13	244-58	Pulley	1

Ref. No.	Part No.	Description	No. Used
14	32146-5	Locknut	8
15	3256-23	Washer	4
16	322-5	Capscrew	4
17	3-0484	Motor Mount	2
18	322-17	Capscrew	4
19	36-3510	Decal — Starting Instructions	1
Spark Arrestor Muffler (Optional)			
20	36-2320	Screen Assembly	1
21	36-2330	Muffler w/Screen Assembly	1
22	3255-7	Lockwasher	2
23	321-15	Capscrew	2

*Not Illustrated

ENGINE TECUMSEH MODEL NO. H35-45492M



ENGINE TECUMSEH MODEL NO. H35-45492M

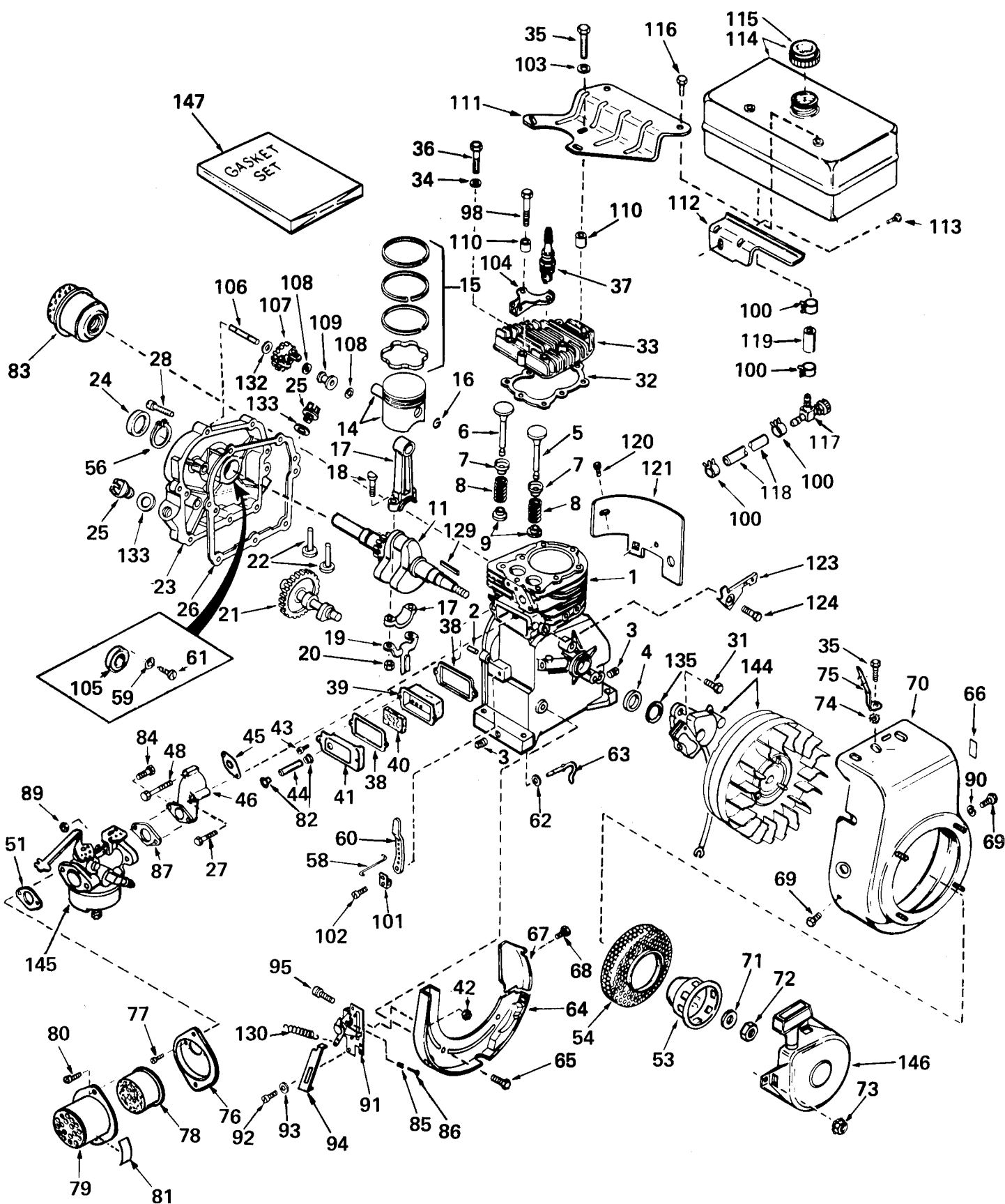
Ref. No.	Part No.	Description	No. Used
1	33164	Cylinder Assembly (Incl. Nos. 2, 3 & 4)	1
2	26727	Pin, Dowel	2
3	27642	Plug, Sq. Hd. Pipe (Oil Drain)	2
4	29183	Seal, Oil	1
5	29314A	Valve, Intake (Std.) (Incl. Nos. 7, 8 & 9)	1
5	29315B	Valve, Intake (1/32" Oversize) (Incl. Nos. 7, 8 & 9)	1
6	29313B	Valve, Exhaust (Std.) (Incl. Nos. 7, 8 & 9)	1
6	29315B	Valve, Exhaust (1/32" Oversize) (Incl. Nos. 7, 8 & 9)	1
7	31671	Cap, Upper Valve Spring	2
8	31672	Spring, Valve	2
9	31673	Cap, Lower Valve Spring	2
11	31274	Crankshaft Assembly	1
14	32538	Piston & Pin Assy. (Incl. 2 of No. 16) (Std.)	1
14	32548	Piston & Pin Assy. (Incl. 2 of No. 16) (.010 Oversize)	1
14	32549	Piston & Pin Assy. (Incl. 2 of No. 16) (.020 Oversize)	1
15	28986	Ring Set, Piston (Std.)	1
15	28987	Ring Set, Piston (.010 Oversize)	1
15	28988	Ring Set, Piston (.020 Oversize)	1
16	20381	Ring, Piston Pin Retaining	2
17	30963B	Rod Assembly Connecting (Incl. Nos. 18, 19 & 20)	1
18	26706	Bolt, Connecting Rod	2
19	28594	Dipper, Oil	1
20	27573	Nut, Lock	2
21	33149	Camshaft (Compression Release)	1
22	27241	Lifter, Valve	2
23	30756B	Cover, Cylinder (Incl. Nos. 24, 25, 106 & 133)	1
24	28540	Seal, Oil	1
25	27625	Plug, Oil Filler (Incl. No. 133)	2
26	*27677	Gasket, Cylinder Cover	1
27	650664	Screw, Phil. Fil. Hd. Mach. Sems	1
28	30564	Screw, Hex Hd. Cap Sems	7
31	650489	Screw, Hex Hd. Sems	2
32	*29953B	Gasket, Cylinder Head	1
33	30579	Head, Cylinder	1
34	26073	Washer	7
35	650694	Screw, Hex Hd. Cap	4
36	6021	Screw, Hex Hd. Cap	2
37	34251	Resistor Spark Plug (RJ-17LM)	1
38	*27234	Gasket, Valve Spring Cover	2
39	27666	Body Assy., Breather	1
40	27233	Element, Breather	1
41	34146	Cover, Valve Spring	1
42	†30322	Nut & Lockwasher Assembly	2
43	650128	Screw, Fil. Slotted Hd. Sems	2
44	32447	Tube, Breather	1
45	*26754	Gasket, Intake	1

Ref. No.	Part No.	Description	No. Used
46	28416	Pipe, Intake	1
48	30646	Screw, Phil. Fil. Hd. Sems	1
51	*27272	Gasket, Air Cleaner	1
53	33667	Cup, Starter	1
54	33668	Screen, Starter Cup	1
56	28539	Ring, Retaining	1
58	31858	Link, Governor-to-Throttle	1
59	28537	Washer, Plain Flat	2
60	31510	Lever, Governor	1
61	30200	Screw, Hex Hd. Sems, Self-tapping	2
62	28277	Flatwasher	1
63	31334	Rod, Governor	1
64	†33342	Baffle, Blower Housing	1
65	650561	Screw, Phil. Hex Hd. Sems	2
66	32078	Decal, Instruction	1
67	33341	Baffle, Extension	1
68	650701	Screw, Phil. Hex Washer Hd. Self-drilling	1
69	29212	Screw, Hex Hd. Sems	2
70	33663A	Housing, Blower	1
71	650763	Washer, Belleville	1
72	650607	Nut, Flywheel	1
73	29752	Nut & Lockwasher Assembly	4
74	16645	Lockwasher E. T.	1
75	30747	Clip, Shorting	1
76	31708	Bracket, Air Cleaner	1
77	28820	Screw, Phil. Fil. Hd. Sems	2
78	31700	Cleaner, Air	1
79	31692	Body, Air Cleaner	1
80	650152	Screw, Fil. Slotted Hd. Sems	2
81	31871A	Decal, Air Cleaner	1
82	32446	Grommet, Breather Tube	2
83	29633	Muffler	1
84	6202	Screw, Hex Hd. Cap	2
85	31342	Spring, Compression	1
86	650549	Screw, Fil. Slotted Hd. Mach.	1
87	*26756	Gasket, Carburetor	1
89	29752	Nut & Lockwasher Assembly	2
90	650168	Washer, Flat	1
91	†33879A	Control Assy., Speed (Incl. Nos. 42, 85, 86 & 95)	1
92	28942	Screw, Hex Hd. Slotted Sems	1
93	27261	Washer, Flat	1
94	33966	Bracket, Governor Speed Limit	1
95	†650139	Screw, Fil. Slotted Hd. Sems	2
98	650695	Screw, Hex Hd. Cap	2
100	26460	Clamp, Fuel Line	4
101	31335	Clamp, Governor Lever	1
102	650548	Screw, Hex Slotted Washer Hd.	1
103	650691	Washer, Flat	1
104	**	Bracket, Handle	1
105	28458	Bearing, Ball	1
106	30574	Shaft, Mechanical Governor	1
107	30591	Gear Assembly Governor (Incl. No. 132)	1
108	29193	Ring, Retaining	2

**Supplied by Toro.

† In original production the speed control assembly is riveted to the blower housing baffle. Replacement speed control assembly includes screws and nuts for mounting. Replacement baffle has threaded holes.

ENGINE TECUMSEH MODEL NO. H35-45492M (Continued)



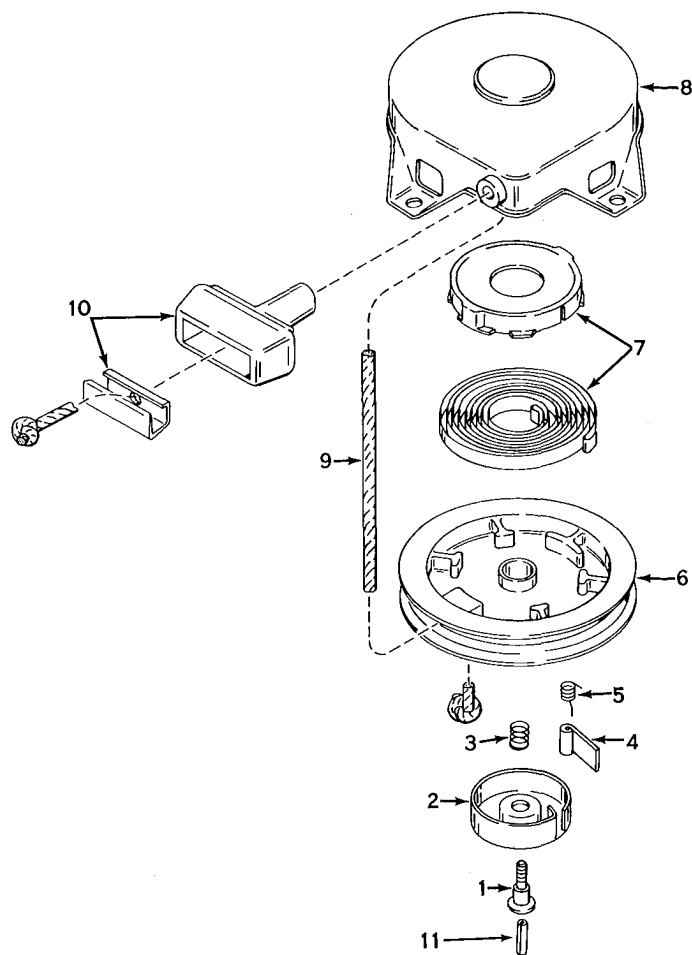
ENGINE TECUMSEH MODEL NO. H35-45492M (Continued)

Ref. No.	Part No.	Description	No. Used
109	30588A	Spool, Governor	1
110	28212	Spacer	3
111	34183	Plate, Fuel Tank Mtg.	1
112	34182	Bracket, Fuel Tank — Lower	1
113	650561	Screw, Phil. Hex Hd. Sems	1
114	34156	Tank Assy., Fuel (Incl. No. 115)	1
115	33032	Cap, Fuel Filler	1
116	650665	Screw, Hex Hd. Sems	2
117	32961	Valve, Fuel Shut-Off	1
118	30705	Line, Fuel	1
119	29774	Line, Fuel	1
120	650128	Screw, Fil. Slotted Hd. Sems	1
121	29745	Extension, Blower Housing	1
123	34212	Bracket, Hold Down	1
124	650768	Screw, Hex Hd. Thread-Forming w/Conical Washer	1

Ref. No.	Part No.	Description	No. Used
129	610949	Key, Flywheel	1
130	31426	Spring, Extension	1
132	30590A	Washer, Flat	1
133	*29673	Gasket, Oil Filler	2
135	33876	Gasket, Stator	1
144	610940A	Magneto (The complete magneto is not available as an assembly. The magneto number is shown for refer- ence purposes only. Order component parts individually, as shown in parts list.)	1
145	631921	Carburetor (Incl. No. 87)	1
146	590420	Starter, Rewind	1
147	33233	Gasket Set (Incl. items marked*)	1

**Supplied by Toro.

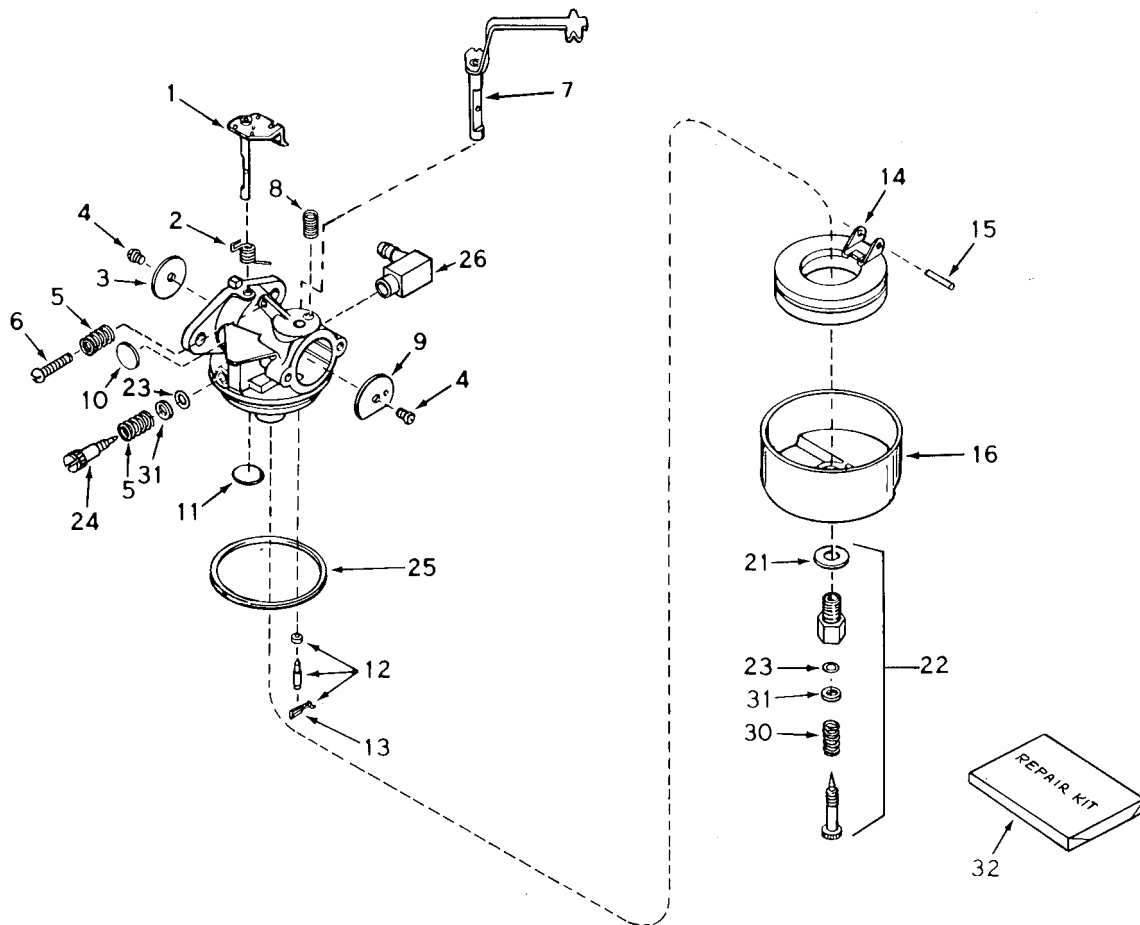
† In original production the speed control assembly is riveted to the blower housing baffle. Replacement speed control assembly includes screws and nuts for mounting. Replacement baffle has threaded holes.



REWIND STARTER NO. 590420

Ref. No.	Part No.	Description	No. Used
1	590409A	Screw, Retainer	1
2	590410	Retainer, R. H.	1
3	590411	Spring, Brake	1
4	590148	Dog, Starter	1
5	590412	Spring, R. H. Dog	1
6	590413A	Pulley	1

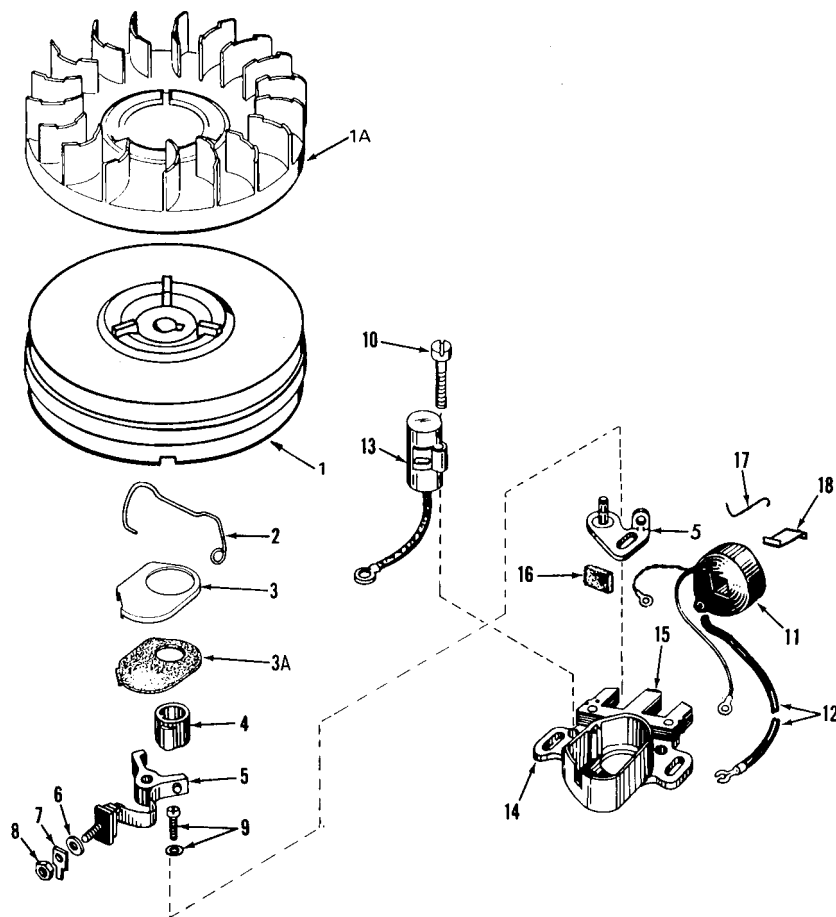
Ref. No.	Part No.	Description	No. Used
7	590414	Spring & Keeper Assy.	1
8	590415	Housing Assy., Starter (Incl. No. 1)	1
9	590386	Rope, Starter	1
10	590387	Handle Assy., Starter	1
11	590459	Pin, Centering	1



CARBURETOR ASSEMBLY NO. 631921

Ref. No.	Part No.	Description	No. Used
1	631615	Shaft & Lever Assy., Throttle	1
2	631279	Spring, Throttle return	1
3	631036	Shutter, Throttle	1
4	650506	Screw	2
5	630766	Spring, Idle regulating screw	2
6	650417	Screw, Idle regulating	1
7	630919	Shaft & Lever Assy., Choke	1
8	630735	Spring, Choke stop	1
9	31837	Shutter, Choke	1
10	*630748	Plug, Welch	1
11	*631027	Plug, Welch	1
12	*631021	Inlet Needle, Seat & Clip Assy. (Incl. No. 13)	1
13	631022	Clip, Inlet needle	1

Ref. No.	Part No.	Description	No. Used
14	631023	Float, Carburetor	1
15	*631024	Shaft, Float	1
16	631867	Bowl, Float	1
21	27110	Gasket, Bowl-to-body	1
22	*31839	Adjustment Screw Assy., Main (Incl. Nos. 21, 23, 30 & 31)	1
23	*630740	"O" Ring, Adjustment screw	2
24	*631078	Screw, Idle adjustment	1
25	*631028	Gasket, Bowl-to-body	1
26	631807	Fitting, Fuel inlet	1
30	630738	Spring, Main adjustment screw	1
31	630739	Washer, Flat	2
32	31840	Repair Kit (Incl. items marked *)	1

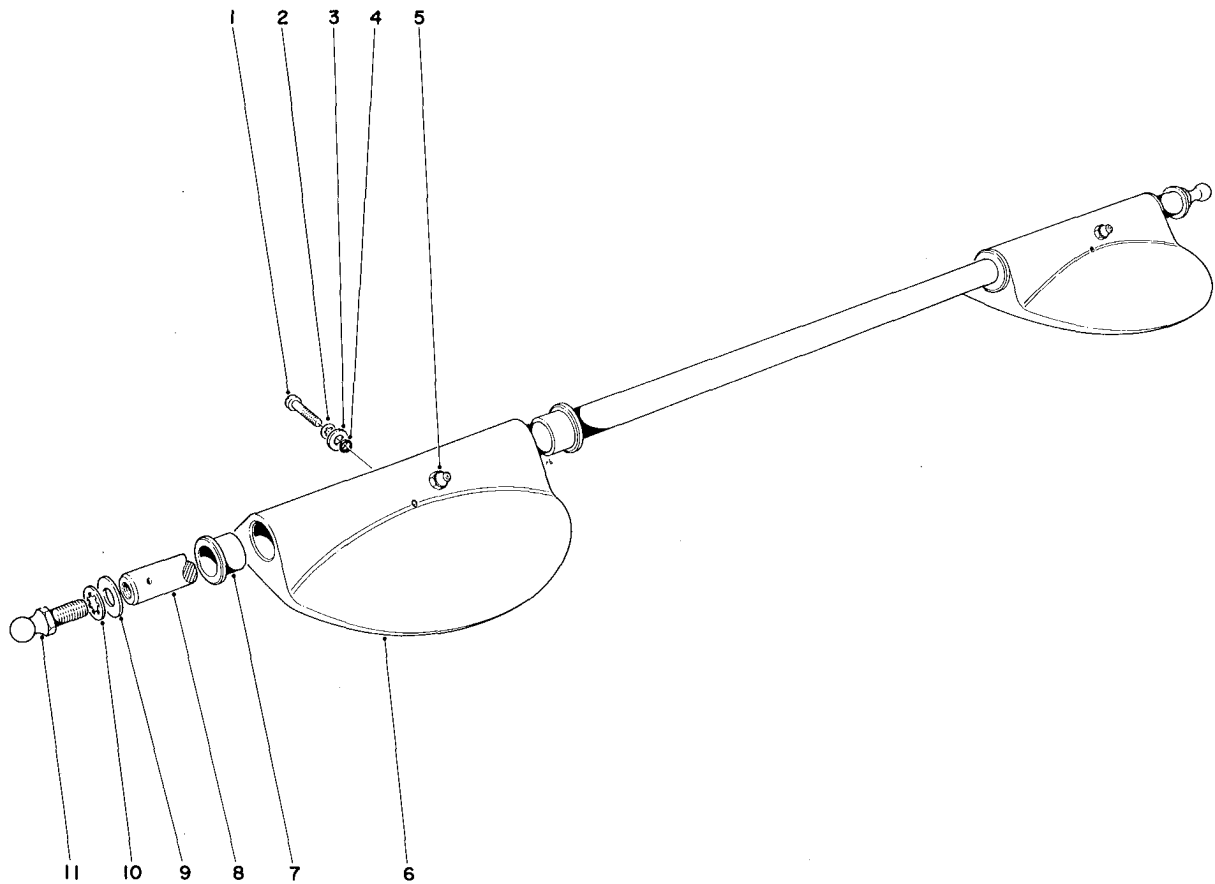


MAGNETO ASSEMBLY NO. 610940A

Ref. No.	Part No.	Description	No. Used
1	610931B	Flywheel (Incl. Nos. 1A, 3 & 3A)	1
1A	610933	Fan	1
2	30551	Spring, Breaker Box Dust Cover	1
3	610947	Cover, Dust	1
3A	610948	Gasket, Dust Cover	1
4	30552	Cam, Breaker	1
5	30547A	Contact Assy., Breaker	1
6	610385	Washer, Terminal	1
7	33356	Tab, Ground Terminal	1
8	610408	Nut, Terminal	1

Ref. No.	Part No.	Description	No. Used
9	29181	Screw & Washer, Breaker	1
10	610593	Screw, Condenser Fastening	1
11	30560A	Coil Assy. (Incl. No. 12)	1
12	30554	Wire, Lead	1
13	30548A	Condenser	1
14	30545	Core & Plate	1
15	30561B	Stator Assy. (Incl. Nos. 2, 3, 3A, 5 thru 14 & 16 thru 18)	1
16	30549	Felt, Cam Wiper	1
17	31311	Clip, Coil Locking	1
18	29629	Spring, Coil Wedge	1

*The complete magneto is not available as an assembly. The magneto number is shown for reference purposes only. Order component parts individually, as shown in parts list.



4-7299 SKID KIT (Optional Equipment)

Ref. No.	Part No.	Description	No. Used
1	32100-10	Screw	2
2	3254-1	S. P. Washer	2
3	3256-21	Washer	2
4	237-47	"O" Ring	2
5	302-5	Grease Fitting	2
6	2-2729	Front Runner Incl. Ref. #5 & 7	2

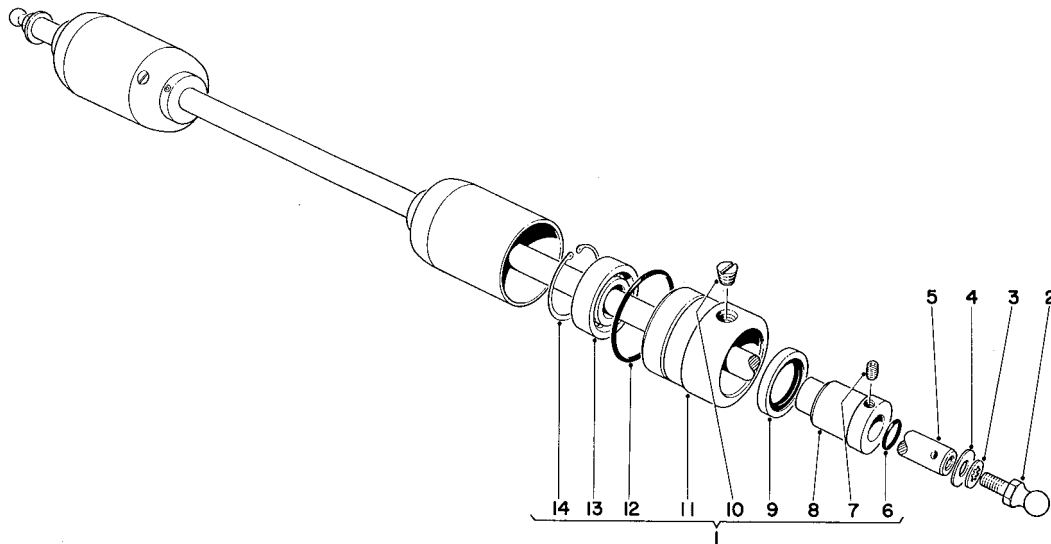
Ref. No.	Part No.	Description	No. Used
7	3-1506	Bushing	4
8	3-8455	Shaft	1
9	3256-24	Washer	2
10	3254-6	S. P. Washer	2
11	2411-7	Ball Stud	2

INSTALLATION INSTRUCTIONS

1. Remove ball studs (Ref. No. 11), s.p. washers (Ref. No. 10), and washers (Ref. No. 9) from both ends of shaft.
2. Assemble one end of skid shaft to cutting unit adjusting screw. Line up holes in shaft and adjusting screw. Insert setscrew and tighten. **IMPORTANT:** Be sure setscrew is positioned towards the front of the cutting unit, as shown on page 9 of Greensmaster "Parts Catalog."
3. Insert setscrew at other end of adjusting screw and

tighten against skid shaft.

4. Assemble ball studs, s.p. washers, and washers (items removed in step #1) to both ends of skid shaft.
5. For height-of-cut adjustment, refer to your Greensmaster Owner's Manual.
6. The skid is prelubricated, but should be relubricated approximately every 40 hours.



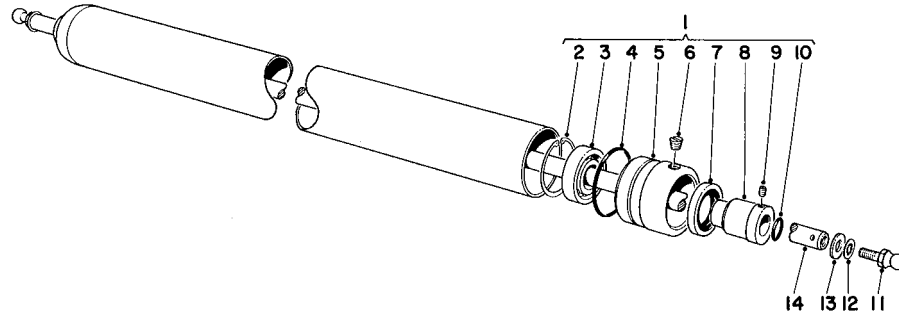
4-7319 SECTIONAL ROLLER KIT (Optional Equipment)

Ref. No.	Part No.	Description	No. Used
2	2411-7	Ball Stud	2
3	3254-6	Lockwasher	2
4	3256-24	Washer	2
5	3-8455	Shaft	1
6	237-69	"O" Ring	4
7	3245-35	Set Screw	4
8	11-3050	Sleeve	4

Ref. No.	Part No.	Description	No. Used
9	253-118	Oil Seal	4
10	285-10	Pipe Plug	4
11	5-1384	Bearing Housing	4
12	237-68	"O" Ring	4
13	251-205	Bearing	4
14	32151-13	Snap Ring	4

INSTALLATION INSTRUCTIONS

1. Remove ball studs (Ref. No. 2), lockwashers (Ref. No. 3), and washers (Ref. No. 4) from both ends of shaft.
2. Assemble one end of roller shaft to cutting unit adjusting screw. Line up holes in shaft and adjusting screw. Insert setscrew and tighten.
3. Insert setscrew at other end of adjusting screw and tighten against roller shaft.
4. Assemble ball studs, lockwashers, and washers (items removed in step #1) to both ends of roller shaft.
5. For height-of-cut adjustment, refer to your Greens-master Owner's Manual.
6. The roller is prelubricated, but should be relubricated approximately every 120 hours.



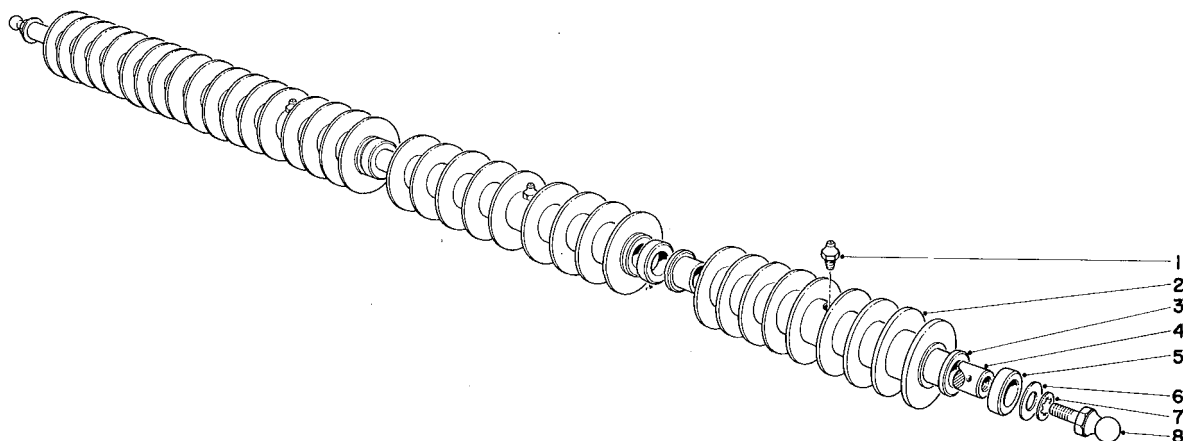
4-7309 FULL ROLLER KIT (Optional Equipment)

Ref. No.	Part No.	Description	No. Used
1	5-1382	Roller Assy., Full	1
2	32151-13	Snap Ring	2
3	251-205	Bearing	2
4	237-68	"O" Ring	2
5	5-1384	Bearing Housing	2
6	285-10	Pipe Plug	2
7	253-118	Oil Seal	2

Ref. No.	Part No.	Description	No. Used
8	11-3050	Sleeve	2
9	3245-35	Set Screw	2
10	237-69	"O" Ring	2
11	2411-7	Ball Stud	2
12	3254-6	Lockwasher	2
13	3256-24	Washer	2
14	3-8455	Shaft	1

INSTALLATION INSTRUCTIONS

1. Remove ball studs (Ref. No. 11), lockwashers (Ref. No. 12), and washers (Ref. No. 13) from both ends of shaft.
2. Assemble one end of roller shaft to cutting unit adjusting screw. Line up holes in shaft and adjusting screw. Insert setscrew and tighten.
3. Insert setscrew at other end of adjusting screw and tighten against roller shaft.
4. Assemble ball studs, lockwashers, and washers (items removed in step #1) to both ends of roller shaft.
5. For height-of-cut adjustment, refer to your Greens-master Owner's Manual.
6. The roller is prelubricated, but should be relubricated approximately every 120 hours.



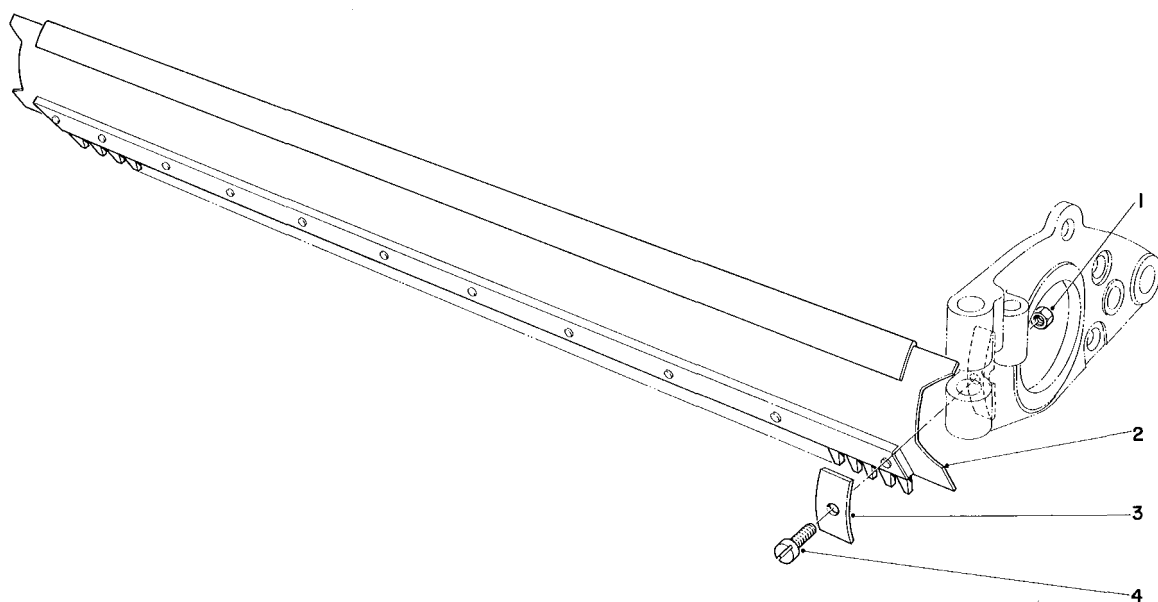
4-7289 WIEHLE ROLLER KIT (Optional Equipment)

Ref. No.	Part No.	Description	No. Used
1	302-5	Grease Fitting	4
2	5-4721	Roller	4
3	3-1506	Bushing	8
4	3-8455	Shaft	1

Ref. No.	Part No.	Description	No. Used
5	3-9284	Spacer	5
6	3256-24	Washer	2
7	3254-6	Lockwasher	2
8	2411-7	Ball Stud	2

INSTALLATION INSTRUCTIONS

1. Remove ball studs (Ref. No. 8), lockwashers (Ref. No. 7), and washers (Ref. No. 6) from both ends of shaft.
2. Assemble one end of roller shaft to cutting unit adjusting screw. Line up holes in shaft and adjusting screw. Insert setscrew and tighten.
3. Insert setscrew at other end of adjusting screw and tighten against roller shaft.
4. Assemble ball studs, lockwashers, and washers (items removed in step #1) to both ends of roller shaft.
5. For height-of-cut adjustment, refer to your Greens-master Owner's Manual.
6. The roller is prelubricated, but should be relubricated approximately every 8 hours.



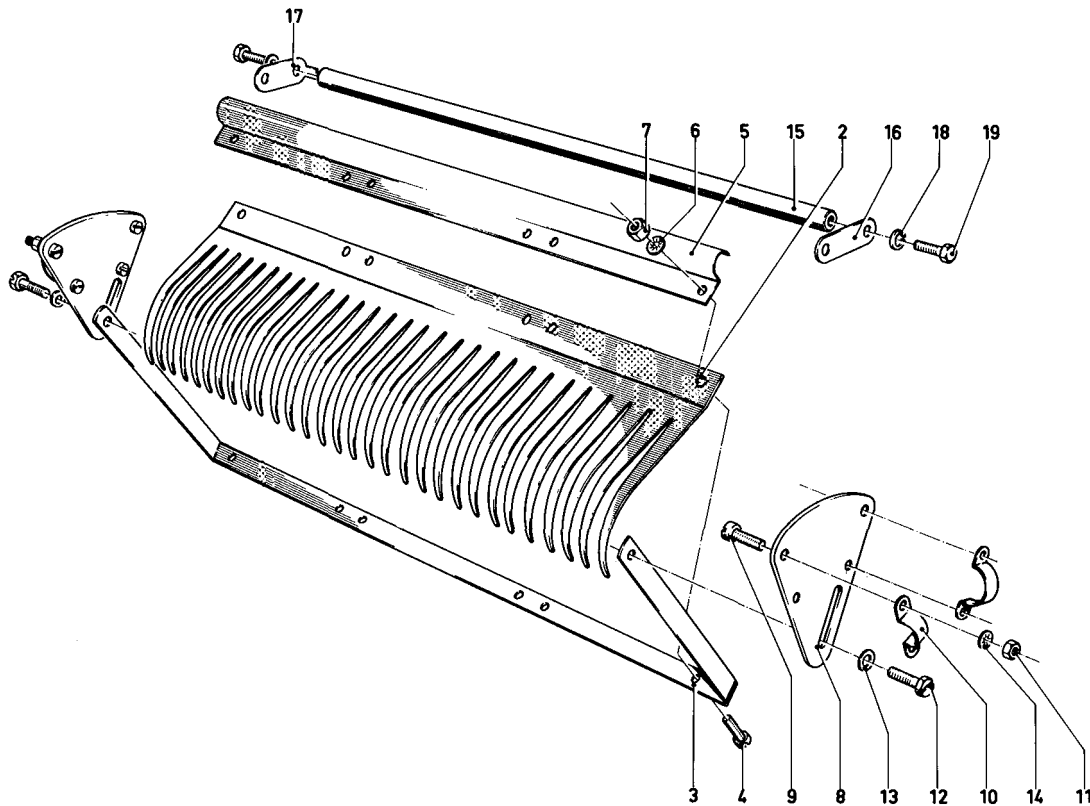
8-2560 URETHANE COMB KIT (Optional Equipment)

Ref. No.	Part No.	Description	No. Used
1	32146-17	Nut	2
2	8-2550	Urethane Comb	1

Ref. No.	Part No.	Description	No. Used
3	8-2500	Clip	2
4	32113-8	Screw	2

INSTALLATION INSTRUCTIONS

1. Remove grass shield from mower.
2. Put comb in place with comb teeth down toward ground.
3. Put clip over end slot in comb and secure with screw and nut. Repeat for other end of comb.
4. Adjust height of comb teeth to be 1/16" below level of bedknife. Readjust height of comb as desired for condition of grass.
5. Be sure each side of comb is adjusted to same height and then tighten both screws.



2-2939 COMB KIT (Optional Equipment)

Ref. No.	Part No.	Description	No. Used
2	3-3653	Comb, Spring	1
3	3-5050	Comb-Bracket	1
4	32134-4	Screw	6
5	3-3654	Channel Attaching	1
6	3255-10	Lockwasher-External S. P.	6
7	3217-28	Nut	6
8	3-3655	Quadrant	2
9	32122-30	Screw	8
10	3-3656	Clip	4

Ref. No.	Part No.	Description	No. Used
11	3217-26	Nut	8
12	32140-27	Screw	2
13	3256-22	Washer	2
14	3255-17	Lockwasher-Internal S. P.	8
15	3-1616	Shaft	1
16	3-1618	Support L. H.	1
17	3-1617	Support R. H.	1
18	3253-3	Lockwasher	2
19	329-3	Capscrew	2

INSTALLATION INSTRUCTIONS

1. Remove capscrews (Ref. No. 19) which hold pull arm assembly to yoke.
2. Install shaft (Ref. No. 15), which has supports bolted to either end, to yoke using capscrews which were removed in step #1.
3. Install attaching channel (Ref. No. 5) over shaft.
4. Install quadrants (Ref. No. 8), one on either side of yoke.
5. Fasten comb bracket (Ref. No. 3) to quadrant and adjust so that tines on comb are set to "comb" with the desired pressure, taking care that tines do not tear into the turf too severely.

NOTE: Grass Shield (3-2057) must be installed before spring comb can be used.

PRODUCT CHANGES

In an effort to make improvements available to TORO owners as quickly as possible, minor changes are incorporated into Toro's products from time to time that do not become immediately shown in the Parts Catalog. If such a change apparently has been made in your unit, which is not reflected in your manual, see your TORO Distributor for information and part numbers.

IDENTIFICATION AND ORDERING

Model and Serial Numbers

The 21" Greensmaster has two identification numbers: a model number and a serial number. The two numbers are stamped on a plate which is located on rear of transmission case. In any correspondence concerning the 21" Greensmaster supply model and serial numbers to assure that correct information and replacement parts are obtained.

To order replacement parts from an Authorized TORO Distributor, supply the following information:

1. Model and serial number of the 21" Greensmaster.
2. Part number, description, and quantity of part(s) desired.

NOTE: Do not order by reference number if a parts catalog is being used; use the PART NUMBER.

The Toro Promise

A One Year Limited Warranty on Turf Products Other Than Walk Rotary Mowers

The Toro Company promises to repair any TORO Product if defective in materials or workmanship. The following time periods from the date of purchase apply:

Turf Products	1 Year
Hevi-Duty Walk Rotary Mowers	90 Days

The costs of parts and labor are included, but the customer pays the transportation costs on walk rotary mowers.

Should you feel your TORO is defective and wish to rely on The Toro Promise, the following procedure is recommended:

1. Contact your Authorized TORO Distributor (the Yellow Pages of your telephone directory is a good reference source).
2. The TORO Distributor will advise you on the arrangements that can be made to inspect and repair your product.
3. The TORO Distributor will inspect the product and advise you whether the product is defective and, if so, make all repairs necessary to correct the defect without extra charge to you.

If for any reason you are dissatisfied with the distributor's analysis of the defect or the service performed, you may contact us.

Write:

TORO Turf Products Service Department
8111 Lyndale Avenue South
Minneapolis, Minnesota 55420

The above remedy of product defects through repair by an Authorized TORO Distributor is the purchaser's sole remedy for any defect.

THERE IS NO OTHER EXPRESS WARRANTY. ALL IMPLIED WARRANTIES OF MERCHANTABILITY AND FITNESS FOR USE ARE LIMITED TO THE DURATION OF THE EXPRESS WARRANTY.

Some states do not allow limitation on how long implied warranty lasts, so the above limitation may not apply to you.

This Warranty applies only to parts or components which are defective and does not cover repairs necessary due to normal wear, misuse, accidents, or lack of proper maintenance. Regular, routine maintenance of the unit to keep it in proper operating condition is the responsibility of the owner.

All warranty repairs reimbursable under The Toro Promise must be performed by an Authorized TORO Distributor using Toro approved replacement parts.

Repairs or attempted repairs by anyone other than an Authorized TORO Distributor are not reimbursable under The Toro Promise. In addition, these unauthorized repair attempts may result in additional malfunctions, the correction of which is not covered by warranty.

The Toro Company is not liable for indirect, incidental or consequential damages in connection with the use of the product including any cost or expense of providing substitute equipment or service during periods of malfunction or non-use.

Some states do not allow the exclusion of incidental or consequential damages, so the above exclusion may not apply to you.

This warranty gives you specific legal rights, and you may also have other rights which vary from state to state.