



8 and 11 Blade SPA Cutting Units for Greensmaster® 3000 Series Traction Units

Model No. 04468—200000001 and Up

Model No. 04450—200000001 and Up

Parts Catalog

Ordering Replacement Parts

To order replacement parts, please supply: the part number, the quantity, and the description of each part desired.

Understanding Reference Numbers

Each identified part in an illustration has a reference number. The reference number for a part also appears in the parts list, along with other information about the part.

This catalog uses two special reference number formats, one to indicate parts in a service assembly and another to indicate the quantity of a given part in an illustration.

Service Assembly Reference Numbers

Parts in service assemblies have reference numbers in the form **a:b**. The **a** represents the reference number of the entire service assembly and the **b** represents a sequential number unique to each part within the service assembly.

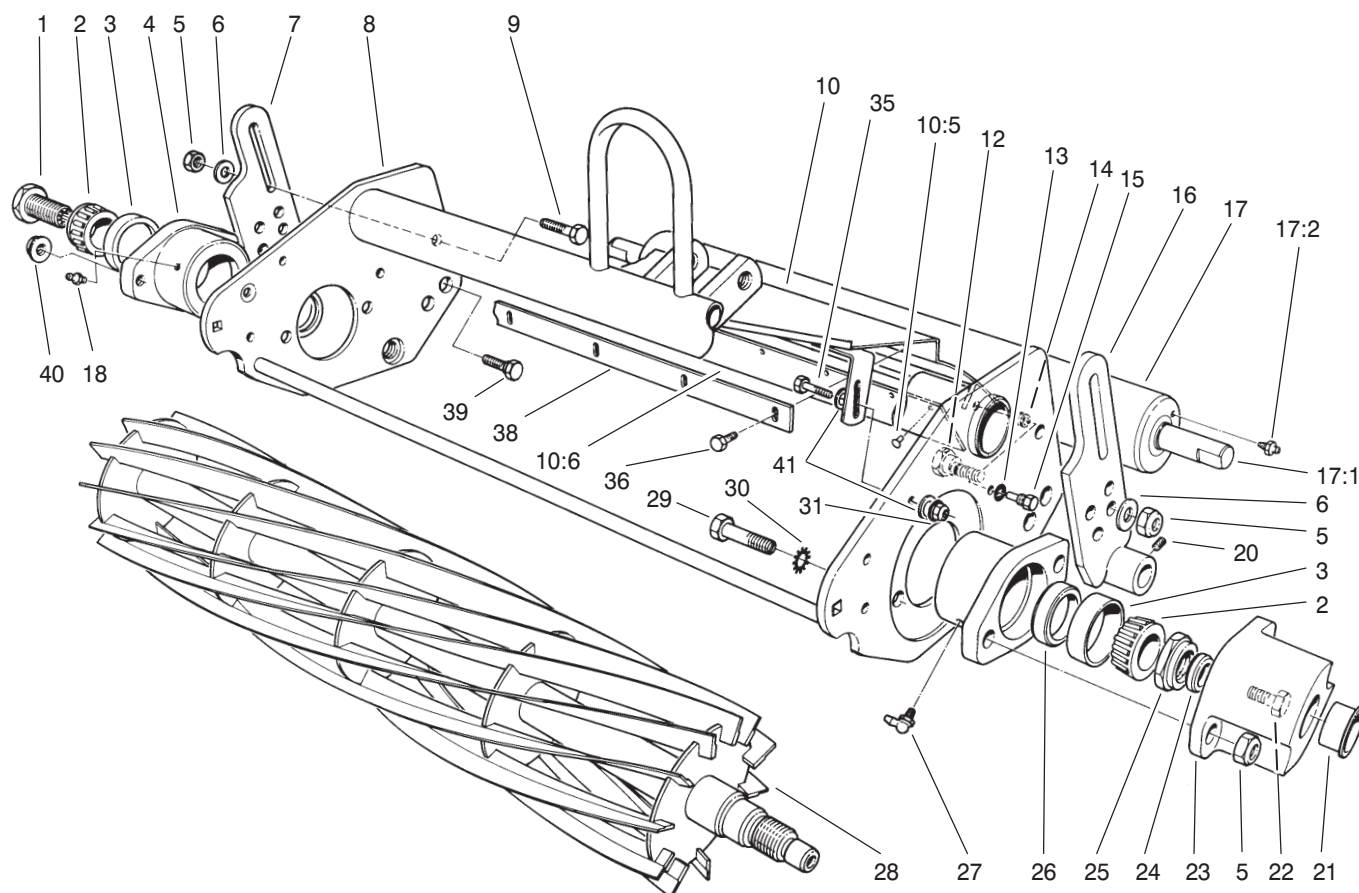
For example, a wheel assembly might be identified by reference number **6**, the tire by **6:1**, the valve by **6:2**, and the wheel by **6:3**. When you order the assembly identified by reference number **6**, you receive all parts identified by reference numbers **6:1**, **6:2**, and **6:3**. However, you may also order any part individually.

Reference numbers of this type appear in illustrations and in part lists.

Reference Numbers Indicating Quantity

In an illustration, if a reference number indicates more than one part, the reference number has the form **nX y**. The **n** represents the quantity of the part, the **X** is the multiplication symbol, and the **y** represents the reference number.

For example, in an illustration, the reference number **2X 37** means that two of the parts identified by reference number **37** are indicated.



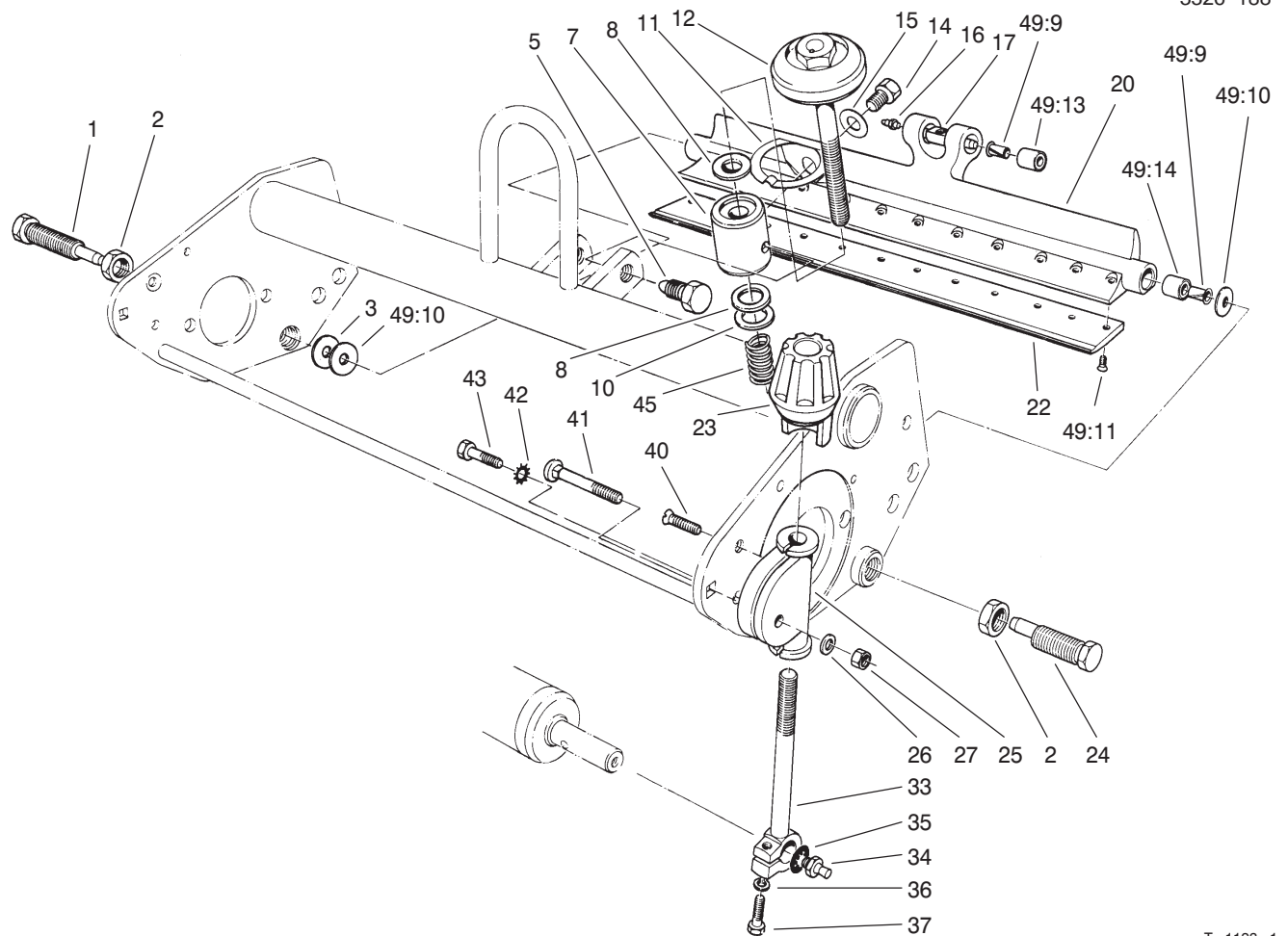
T-0309

Reel and Frame Assembly

Ref. No.	Part No.	Qty.	Description
1	93-1394	1	Nut-Spline
2	254-94	2	Cone-Bearing
3	254-72	2	Cup-Bearing
4	10-5120	2	Housing-Bearing
5	3296-39	6	Nut-Lock
6	3256-24	4	Washer-Flat
7	77-1060	1	Plate-Adjustment, RH
8	70-1200-01	1	Frame-Reel
9	323-7	2	Screw-HH
10	57-5200	1	Grass Shield Assembly
10:5	3295-46	13	Rivet-Pop
10:6	57-5210	1	Flap-Shield
12	52-3100	1	Bolt-Eccentric, HOC LH
13	3254-6	2	Washer-Lock
14	237-84	2	Grommet
15	57-9910	2	Screw-Pivot
16	77-1080	1	Plate-Adjustment, LH
17	52-3120	1	Rear Roller Assembly
17:1	21-6430	2	Bearing-Roller, Rear
17:2	302-5	2	Fitting-Lube
18	302-5	1	Fitting-Lube
20	3246-2	2	Screw-Set
21	12-0460	1	Caplug
22	323-2	1	Screw-HH
23	10-5080-01	1	Cap-End

Ref. No.	Part No.	Qty.	Description
24	253-61	1	Seal
25	3296-60	1	Nut-Lock
26	253-96	2	Seal
27	302-40	1	Fitting-Lube
28	12-2789	1	Reel-11 Blade (Only On: 04450)
28	12-3599	1	Reel-8 Blade (Only On: 04468)
29	57-3210	4	Screw-Special
30	3255-9	4	Washer-Lock
31	3296-42	2	Nut-Lock
*34	77-0490	1	Decal-Bolt, Eccentric
35	321-5	2	Screw-HH
36	104-2065	5	Screw-Self Tapping
38	36-7260	1	Bar-Cut Off
39	52-3110	1	Bolt-Shoulder, RH
40	32128-36	2	Nut-Flange-Lock
41	3256-22	4	Washer-Flat

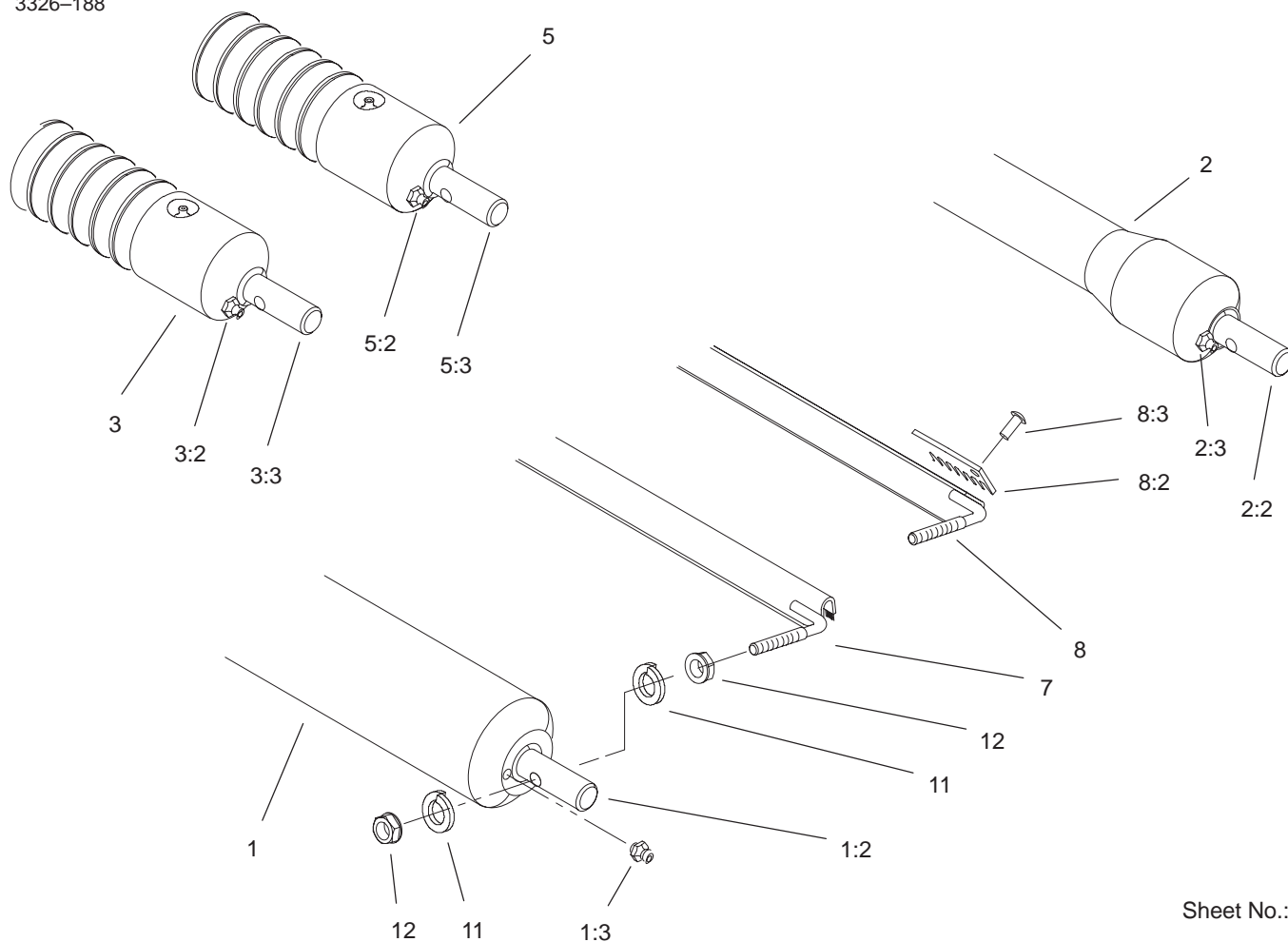
* Not Illustrated



T-1123-1

Bedbar Assembly

Ref. No.	Part No.	Qty.	Description	Ref. No.	Part No.	Qty.	Description
1	52-2930	1	Bolt-Adjustment, Shoulder	33	10-5010	2	Screw-Roller Adjustment
2	3220-6	2	Nut-Hex Jam	34	94-2958	2	Ball Stud
3	52-2860	1	Washer	35	3254-6	2	Washer-Lock
5	66-7240	2	Screw-Pivot, SPA	36	3253-3	2	Washer-Lock
7	77-0330	1	Pivot-SPA	37	321-4	2	Screw-HH
8	77-0350	2	Retainer-Bearing	40	32108-20	2	Screw-FH
10	257-5	1	Washer-Thrust	41	3-7253	2	Bolt-Carriage
11	66-7220	1	Arm-Spring	42	3255-8	2	Washer-Lock
12	77-0300-01	1	Handle Assembly	43	322-5	2	Screw-HH
14	324-25	1	Screw-HH	45	66-7230	1	Spring-Compression
15	3256-25	1	Washer-Flat	49	13-3659	1	Overhaul Kit (Incl. Ref. 2-3, 24 & 26 on page 2)
16	302-18	1	Fitting-Lube	49:9	52-2890	4	Bushing-Flanged
17	57-5260	1	Pivot-Bedbar	49:10	52-2900	2	Washer-Poly
20	57-4940	1	Bedbar	49:11	57-4910	13	Screw-Special
22	93-4264	1	Bedknife-1/8"	49:13	62-5510	2	Rubber Bushing ASM
22	62-2500	1	Bedknife-3/16"	49:14	63-9510	2	Rubber Bushing ASM
22	93-4263	1	Bedknife-Tournament				
23	65-8600	2	Knob-Height Adjustment				
24	52-2910	1	Bolt-Eccentric Shoulder, LH				
25	10-5060	2	Bracket-Height of Cut				
26	3256-23	2	Washer-Flat				
27	3296-29	2	Nut-Lock				



Sheet No.: 3

Roller and Scraper Options

Ref. No.	Part No.	Qty.	Description
1	52-3170	1	Full Front Roller ASM
1:2	52-3180	2	Bearing-Front Roller
1:3	302-5	2	Fitting-Grease
2	52-3590	1	Swaged Roller ASM
2:2	52-3180	2	Bearing-Front Roller
2:3	302-5	2	Fitting-Grease
3	71-1550	1	Wiehle Roller ASM
3:2	302-5	2	Fitting-Grease
3:3	52-3180	2	Bearing-Front Roller
5	88-6790	1	Wiehle Roller ASM
5:2	302-5	2	Fitting-Grease
5:3	52-3180	2	Bearing-Front Roller
7	33-1000	1	Scraper Brush ASM
8	11-0070	1	Scraper Comb ASM
8:2	8-2530	1	Comb
8:3	3295-2	11	Rivet-Semi
11	3254-8	4	Washer-Lock - Int
12	3219-1	4	Nut-Hex

Ref. No.	Part No.	Qty.	Description