



## Z350

### Z-Master<sup>®</sup> with 122cm Mower and Bagger

Model No. 74195—21000001 and Up

## Parts Catalog

---

### Ordering Replacement Parts

To order replacement parts, please supply: the part number, the quantity, and the description of each part desired.

### Understanding Reference Numbers

Each identified part in an illustration has a reference number. The reference number for a part also appears in the parts list, along with other information about the part.

This catalog uses two special reference number formats, one to indicate parts in a service assembly and another to indicate the quantity of a given part in an illustration.

### Service Assembly Reference Numbers

Parts in service assemblies have reference numbers in the form **a:b**. The **a** represents the reference number of the entire service assembly and the **b** represents a sequential number unique to each part within the service assembly.

For example, a wheel assembly might be identified by reference number **6**, the tire by **6:1**, the valve by **6:2**, and the wheel by **6:3**. When you order the assembly identified by reference number **6**, you receive all parts identified by reference numbers **6:1**, **6:2**, and **6:3**. However, you may also order any part individually.

Reference numbers of this type appear in illustrations and in part lists.

### Reference Numbers Indicating Quantity

In an illustration, if a reference number indicates more than one part, the reference number has the form **nX y**. The **n** represents the quantity of the part, the **X** is the multiplication symbol, and the **y** represents the reference number.

For example, in an illustration, the reference number **2X 37** means that two of the parts identified by reference number **37** are indicated.

## Contents

<b>Description</b>	<b>Page</b>	<b>Description</b>	<b>Page</b>
Traction Frame Assembly .....	3	Air Cleaner and Bagger Frame Assembly .....	22
Tail Wheel and Bumper Assembly .....	4	Bagger Assembly .....	23
Engine Installation and Fuel Assembly .....	5	Electrical Schematic .....	24
Hydraulic #1 Assembly .....	6	Hydraulic Schematic .....	25
Hydraulic #2 Assembly .....	7	Gearbox Kit Assembly No. 104-2446 .....	26
Electrical #1 Assembly .....	8	Gearbox Assembly .....	27
Electrical #2 Assembly .....	9	Crankshaft Assembly .....	29
Parking Brake Assembly .....	10	Crankcase Assembly .....	30
Steering Control Assembly .....	11	Oil Pan/Lubrication Assembly .....	31
Seat Assembly .....	12	Head/Valve/Breather Assembly .....	32
Exhaust Assembly .....	13	Ignition/Electrical Assembly .....	33
PTO / Hydro Drive Assembly .....	14	Blower Housing and Baffle Assembly .....	34
Gearbox Assembly No. 104-2433 .....	15	Starting System Assembly .....	35
Drive Shaft Assembly No. 94-4722 .....	16	Fuel System Assembly .....	36
Carrier Frame Assembly .....	17	Engine Control Assembly .....	37
Deck Assembly .....	19	Air Intake/Filtration Assembly .....	38
Plenum Assembly .....	20	Exhaust Assembly .....	39
Blower Assembly .....	21		

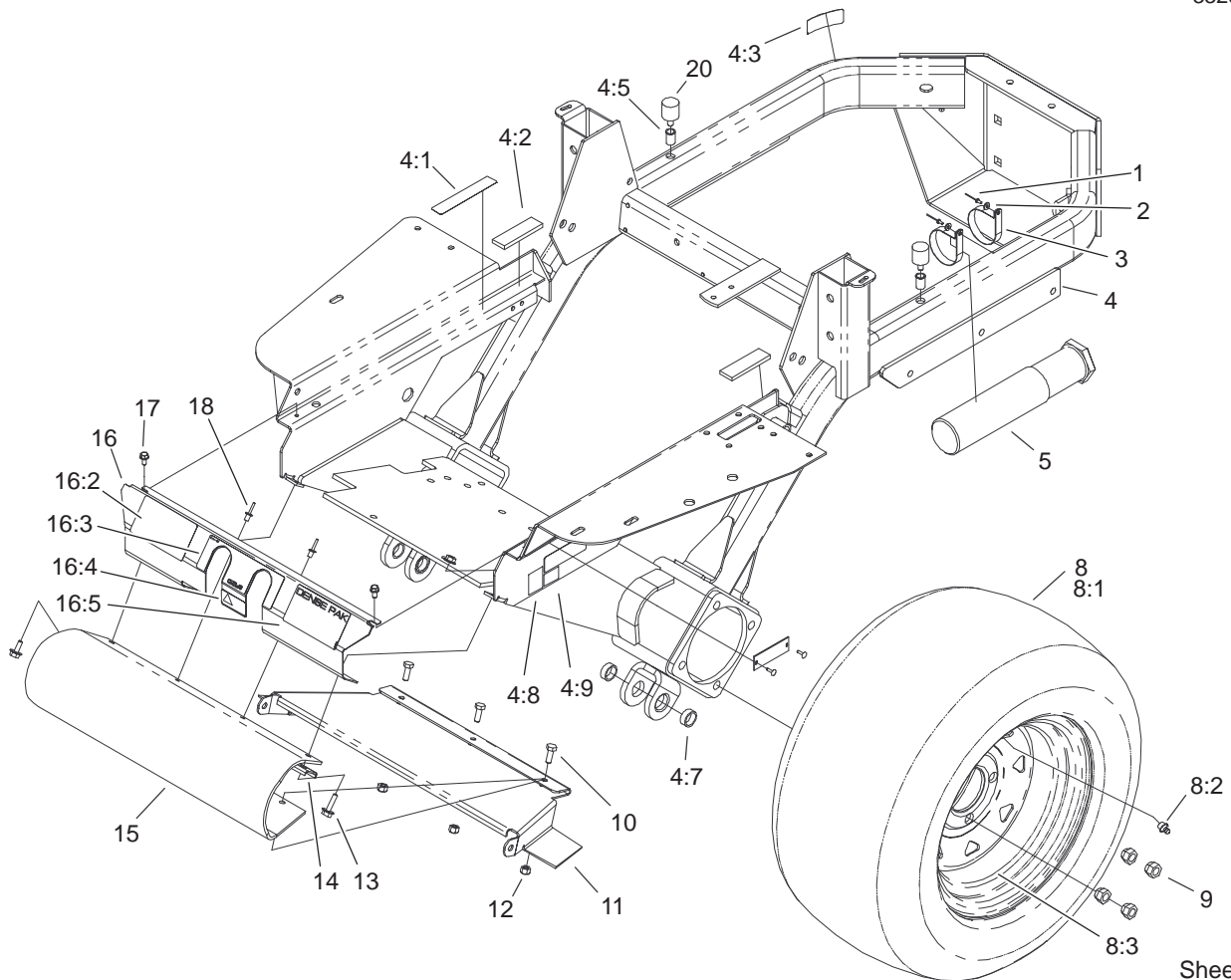
## Accessories

<b>Description</b>	<b>Model / Part No.</b>	<b>Description</b>	<b>Model / Part No.</b>
LH Low Sail Blade .....	100-2354	Bagger Wear Plate .....	100-4552
RH Low Sail Blade .....	100-2353	Armrest Kit .....	30707
Fuel Gauge Kit .....	98-1325		

## Part Description Abbreviations

Part descriptions in this catalog may include the following abbreviations.

<b>Abbreviation</b>	<b>Meaning</b>	<b>Abbreviation</b>	<b>Meaning</b>
AR .....	as required	HYD .....	hydraulic
ASM .....	assembly	INC .....	incorporated
CARR .....	carriage	LH .....	left hand
DEG .....	degrees	NI .....	nylon insert
FH .....	flat head	PPH .....	Phillips pan head
GA .....	gauge	PTH .....	Phillips truss head
HF .....	hex flange	PTO .....	power take off
HH .....	hex head	RH .....	right hand
HHF .....	hex head flange	SFH .....	slotted fillister head
HLH .....	hex lag head	SHH .....	slotted hex head
HJ .....	hex jam	SQH .....	square head
HOC .....	height-of-cut	SHWH .....	slotted hex washer head
HS .....	hex socket	SPH .....	slotted pan head
HSBH .....	hex socket button head	SRH .....	slotted round head
HSFH .....	hex socket flat head	STD .....	standard
HSH .....	hex socket head	TAP .....	self tapping
HWH .....	hex washer head	TTH .....	Torx truss head
HWHTF .....	hex washer head thread forming	WH .....	wing head

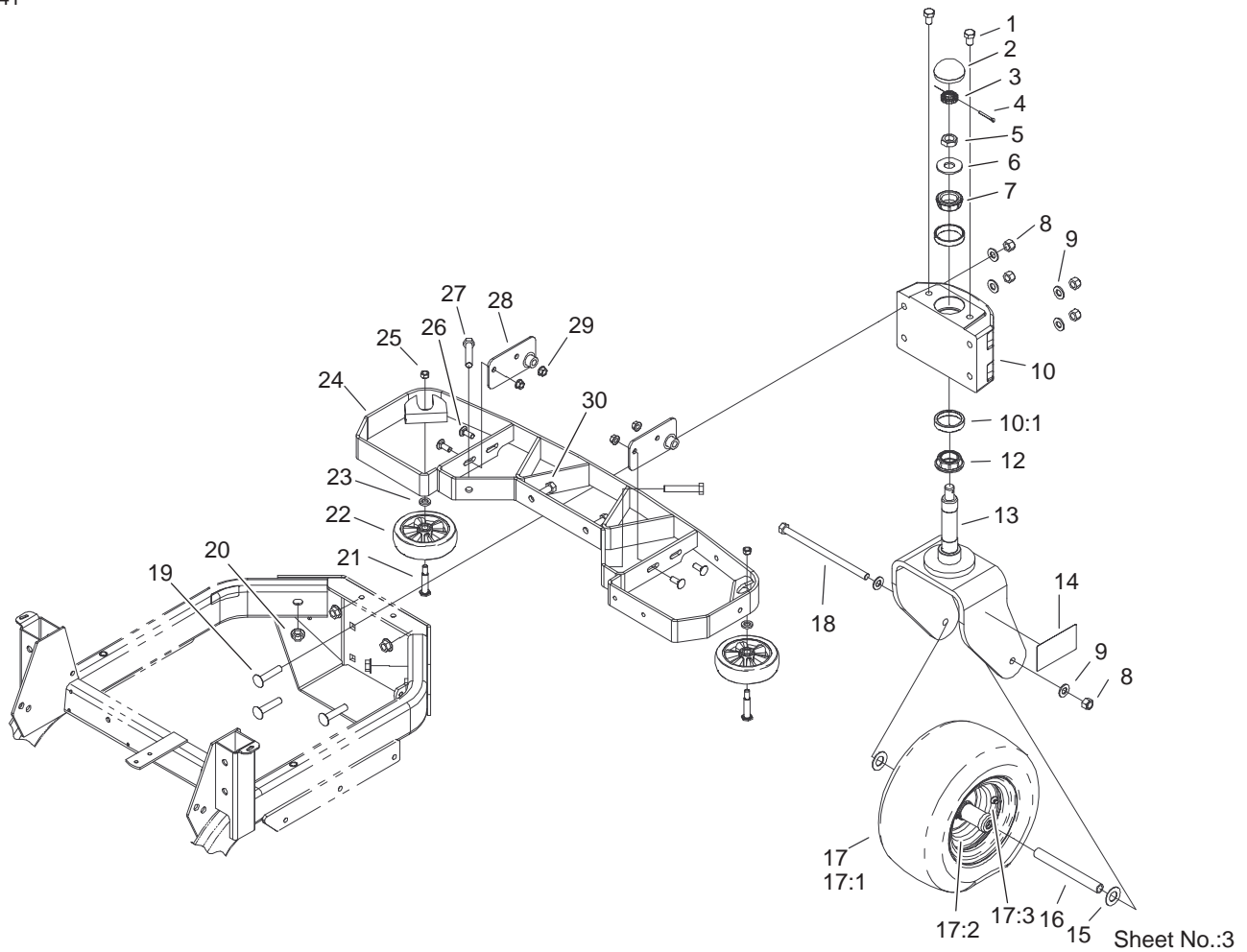


Sheet No.:2

## Traction Frame Assembly

Ref. No.	Part No.	Qty.	Description
1	3269-8	2	Rivet
2	3256-21	2	Washer-Flat
3	2412-120	2	R-Clamp
4	104-7790	1	Frame ASM
4:1	98-1977	1	Decal-Warning
4:2	52-5260	2	Pad-Rubber
4:3	93-1265	1	Decal-Surface, Hot
4:5	32148-8	2	Insert-Threaded
4:7	100-2442	4	Bushing
4:8	63-9920	1	Decal-Level, Noise
4:9	98-4372	1	Decal - 90 Lpa
5	74-0720	1	Tube-Manual
8	94-9380	2	Tire And Wheel ASM
8:1	94-9387	1	Tire
8:2	232-27	1	Stem-Valve
8:3	94-9386	1	Wheel
9	242-50	8	Nut-Lug
10	322-4	3	Screw-HH
11	100-9614-01	1	Cover - Driveshaft
12	3296-29	3	Nut-Lock
13	32144-44	2	Screw-HWH
14	100-9620-03	1	Bracket - Guard
15	100-9619	1	Guard - Footrest
16	104-2402	1	Cover Plate ASM
16:2	100-7789	1	Decal - Z350

Ref. No.	Part No.	Qty.	Description
16:3	98-1974	1	Decal-Control, Steering
16:4	98-4387	1	Decal-Protection, Ear
16:5	104-5106	1	Decal-Pak, Dense
17	32144-4	2	Screw-HWH
18	3290-412	2	Rivet
20	104-2442	2	Bumper - Rubber



## Tail Wheel and Bumper Assembly

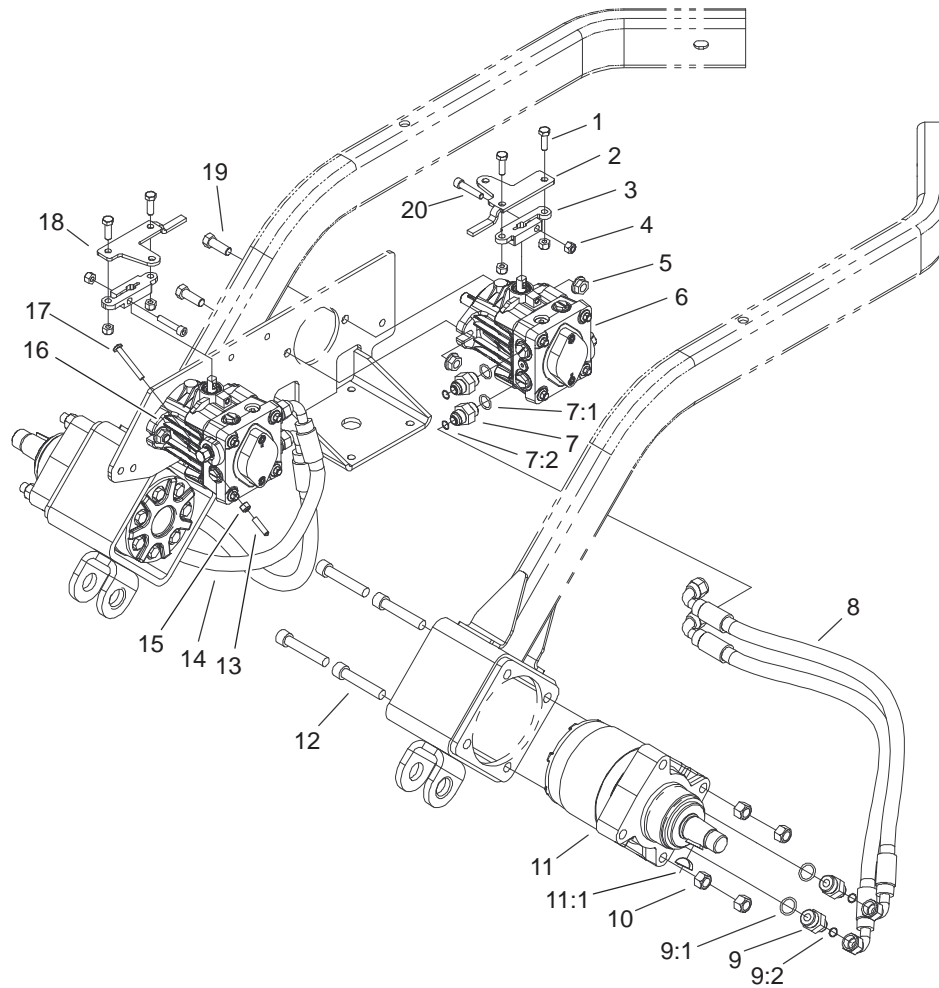
Ref. No.	Part No.	Qty.	Description
1	325-2	2	Screw-HH
2	94-4665	1	Dustcap
3	93-0307	1	Nut-Retainer, Lock
4	3272-17	1	Pin-Cotter
5	3220-7	1	Nut-Jam
6	3256-8	1	Washer-Flat
7	254-62	1	Bearing-Roller, Cone
8	3296-23	5	Nut-Lock, NI
9	3256-26	6	Washer-Flat
10	105-1609	1	Spindle Housing ASM
10:1	254-61	2	Bearing-Cup
12	254-70	1	Bearing-Cone
13	94-4647-01	1	Caster Fork ASM
14	100-7789	1	Decal - Z350
15	3256-39	2	Washer-Flat
16	94-4753	1	Tube-Spacer, Castor
17	98-4352	1	Tire And Wheel ASM
17:1	94-9384	1	Tire
17:2	98-4351	1	Wheel ASM
*17:2:1	99-0246	4	Washer-Stop
*17:2:2	99-0247	2	Bearing-Roller
*17:2:3	99-0248	2	Seal-Felt
*17:2:4	99-0249	2	Cap-End
17:3	232-27	1	Stem-Valve
18	325-24	1	Screw-HH
19	3233-27	4	Screw-CARR

Ref. No.	Part No.	Qty.	Description
20	32128-23	4	Nut-HF
21	5188	2	Bolt-Shoulder
22	109375	2	Wheel ASM
23	9202424	2	Spacer
24	104-2434-03	1	Bumper ASM
25	32153-2	2	Nut-Lock
26	3231-2	4	Screw-CARR
27	325-11	2	Screw-HH
28	104-2430-03	2	Pivot ASM
29	32128-21	4	Nut-HF
30	325-5	2	Screw-HH

\* Not illustrated



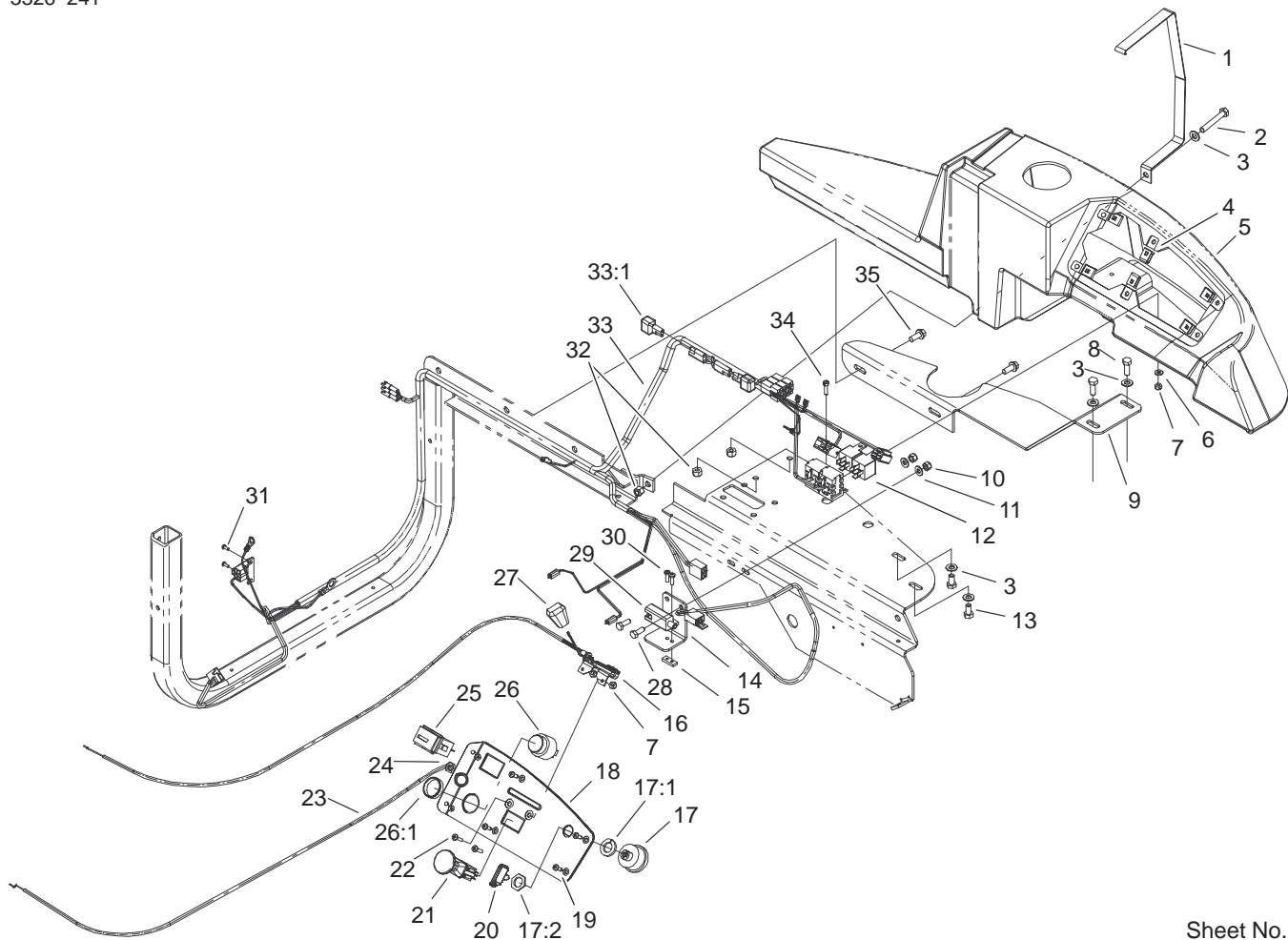




Sheet No.:6

## Hydraulic #2 Assembly

Ref. No.	Part No.	Qty.	Description	Ref. No.	Part No.	Qty.	Description
1	322-5	4	Screw-HH				
2	94-4702-03	1	Plate - Control, Left				
3	94-4678	2	Arm-Control, Pump				
4	3296-29	6	Nut-Lock				
5	32128-42	4	Nut-HF				
6	104-7750	1	Pump-HYD, 10cc				
7	1-603990	4	Fitting-Straight				
7:1	237-79	1	O-Ring				
7:2	1-603992	1	O-Ring				
8	104-7845	2	HYD Hose ASM				
9	1-603991	4	Fitting-Straight				
9:1	1-603919	1	O-Ring				
9:2	1-603992	1	O-Ring				
10	3296-23	8	Nut-Lock, NI				
11	99-0206	2	Motor-Wheel, HYD				
11:1	3257-42	1	Key-Woodruff				
12	3274-93	8	Screw-HSH				
13	1-613073	2	Grip-Valve, Dump				
14	104-7846	2	HYD Hose ASM				
15	3296-42	2	Nut-Lock, NI				
16	104-7751	1	Pump-HYD, 10cc				
17	1-801063	2	Screw				
18	94-4701-03	1	Plate-Control, Right				
19	324-5	4	Screw-HH				
20	3274-83	2	Screw-HSH				

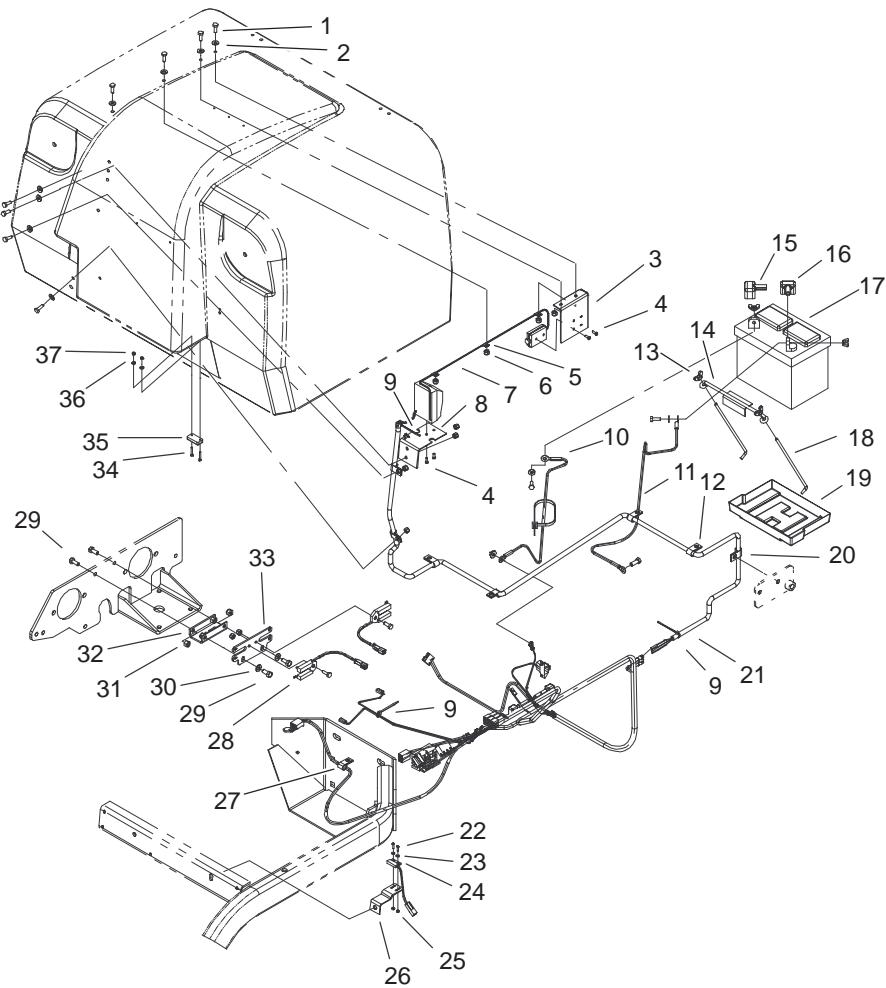


Sheet No.:7

## Electrical #1 Assembly

Ref. No.	Part No.	Qty.	Description
1	94-9488-03	1	Strap – Console
2	322-11	1	Screw-HH
3	3256-23	5	Washer-Flat
4	95-1962	6	Clip – Tinnerman
5	104-0365	1	Console
6	3256-14	1	Washer-Flat
7	3296-2	3	Nut-Lock
8	322-4	2	Screw-HH
9	100-7792-01	1	Plate – Support, Console
10	3296-42	2	Nut-Lock, NI
11	3256-22	2	Washer-Flat
12	116397	2	Relay
13	322-2	2	Screw-HH
14	104-7773-01	1	Bracket-Switch
15	1-633181	1	Plate-Tapped
16	98-4350	1	Throttle Control ASM
17	88-9830	1	Switch-Ignition
17:1	3254-5	1	Washer-Lock, Internal
17:2	218-461	1	Nut-HH
18	104-7802	1	Instrument Panel ASM
18:2	104-7808	1	Decal – Instrument
19	32144-124	6	Screw-PPH
20	62-7770	2	Key-Ignition
21	1-633673	1	Switch-Delta
22	3250-13	2	Screw-PPH

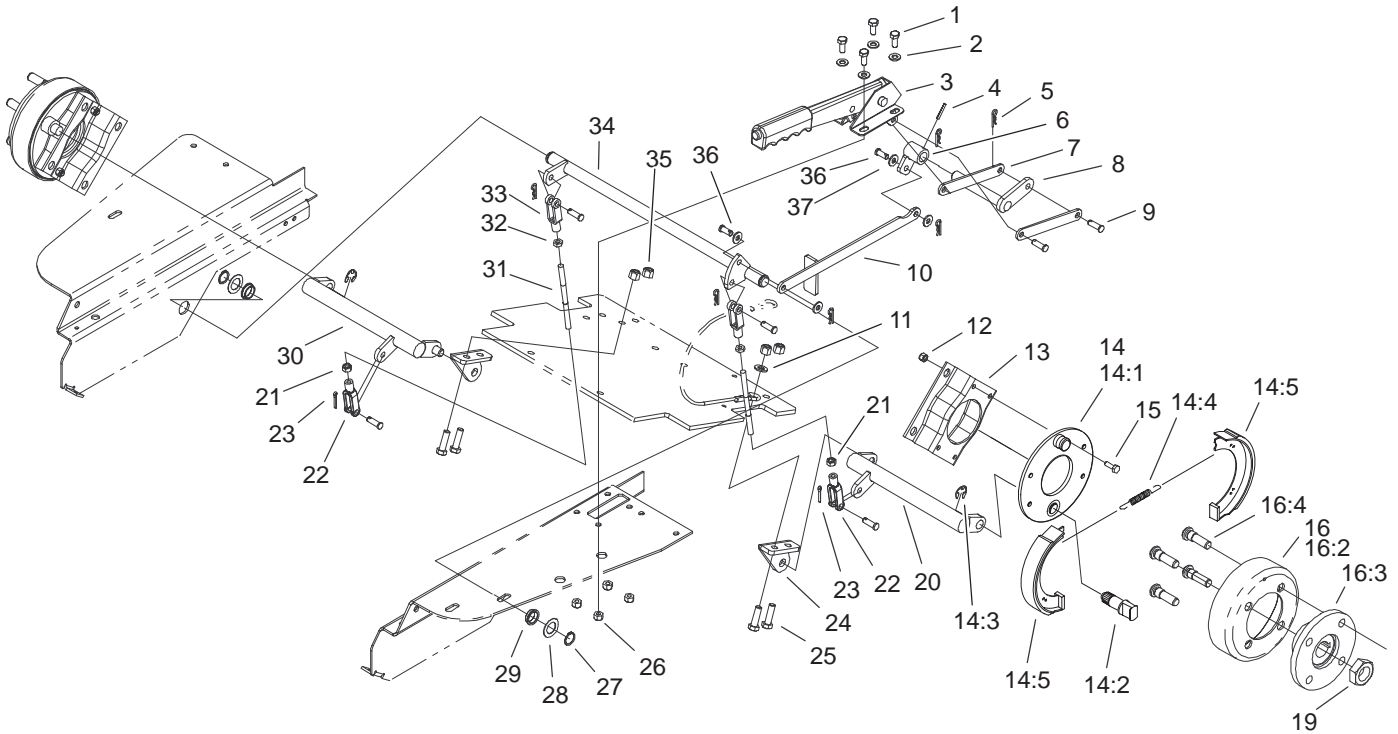
Ref. No.	Part No.	Qty.	Description
23	98-1956	1	Control – Choke
24	3220-3	1	Nut-Jam
25	94-4208	1	Hourmeter
26	80-9330	1	Alarm-Audio
26:1	104-5107	1	Nut-Plastic, Knurled
27	66-0120	1	Knob
28	321-4	2	Screw-HH
29	1-633111	1	Switch
30	3290-500	2	Screw-PPH
31	32144-74	2	Screw-TAP
32	3296-29	3	Nut-Lock
33	104-0394	1	Harness – Ofz, Main
33:1	100-4918	2	Diode
34	32105-13	1	Screw-SHH
35	32144-11	2	Screw-TAP



Sheet No.:8

## Electrical #2 Assembly

Ref. No.	Part No.	Qty.	Description	Ref. No.	Part No.	Qty.	Description
1	321-4	12	Screw-HH	25	3296-52	2	Nut-Lock NI
2	3256-22	12	Washer-Flat	26	104-2443-03	1	Bracket - Switch
3	100-2440-03	1	Bracket - Emitter	27	2412-93	1	R-Clamp
4	3250-19	4	Screw-PPH	28	98-1324	2	Switch - Interrupter
5	2412-127	3	Clamp-R	29	322-3	4	Screw-HH
6	3296-42	11	Nut-Lock, NI	30	3256-23	2	Washer-Flat
7	98-2367	1	Module-Det, Obstruction	31	3296-29	4	Nut-Lock
8	98-3000-03	1	Bracket - Receiver	32	94-4797-03	1	Channel-Mount, Switch
9	3290-381	4	Tie - Cable	33	94-9460	1	Plate-Mount, Switch
10	28-3893	1	Wire ASM	34	3290-124	2	Screw-HH
11	92-6287	1	Wire ASM (Negative)	35	98-3006	1	Actuator
12	2412-93	6	R-Clamp	36	3256-12	2	Washer-Flat
13	32103-22	4	Nut-Wing	37	3296-9	2	Nut-Lock NI
14	113010	1	Holddown-Battery				
15	28-8080	1	Boot-Terminal				
16	98-0603	1	Boot-Terminal				
17	94-1867	1	Battery				
18	94-6146	2	Retainer - Battery				
19	106948	1	Tray-Battery				
20	2412-138	1	R-Clamp				
21	98-3009	1	Conduit - Convolved				
22	32105-28	2	Screw-HH				
23	104-5112	2	Washer-Flat				
24	95-7669	1	Switch-Reed, Magnetic				

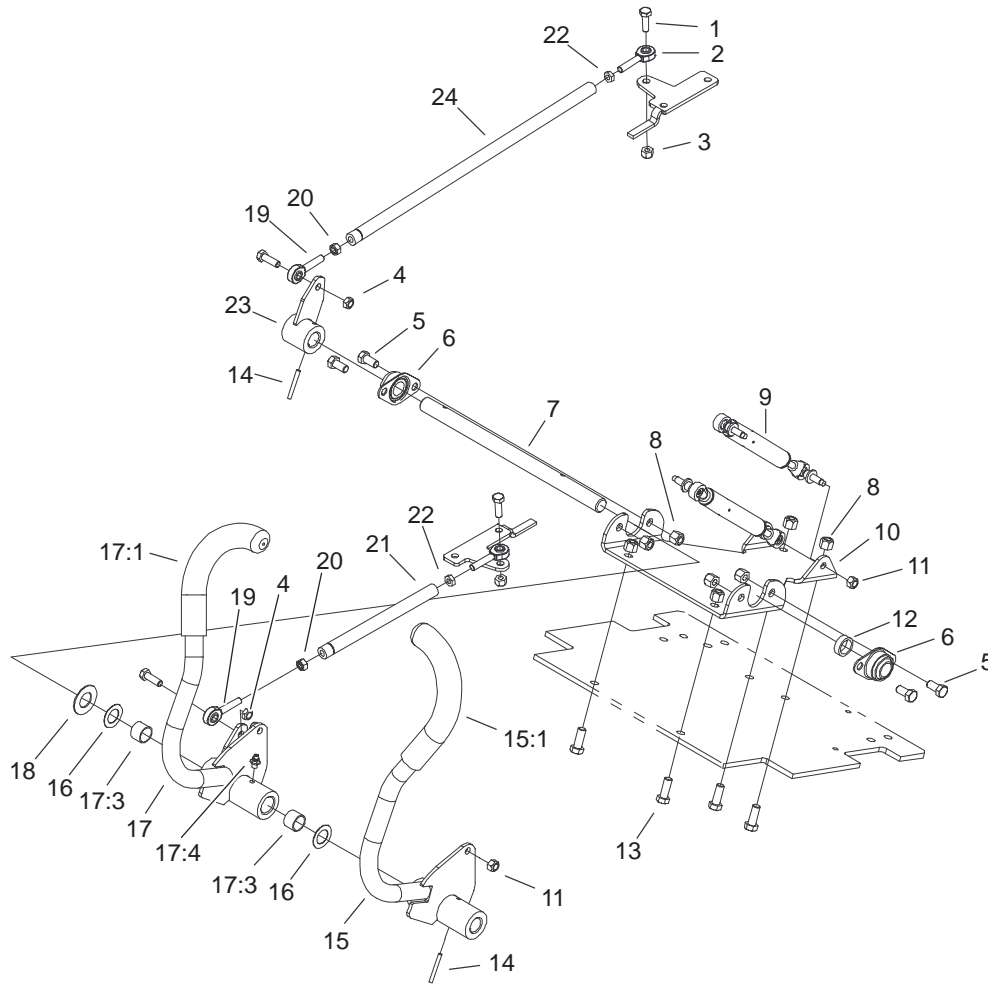


Sheet No.:9

## Parking Brake Assembly

Ref. No.	Part No.	Qty.	Description
1	322-3	4	Screw-HH
2	3256-23	4	Washer-Flat
3	94-4602	1	Lever - Brake
4	32121-93	1	Pin-Spiral
5	3290-307	6	Pin-Hair
6	104-7771	1	Brake Hub ASM
7	98-1992	2	Link - Brake
8	98-1990	1	Transfer Shaft ASM
9	283-1	5	Pin-Yoke
10	104-7770	1	Connector Link ASM
11	3256-24	1	Washer-Flat
12	3296-42	8	Nut-Lock, NI
13	84-2000-03	2	Bracket-Brake
14	104-7705	2	Brake ASM
14:1	70-9870	1	Plate-Backing
14:2	104-7707	1	Cam Shaft-Brake
14:3	104-7706	1	E-Ring-Bowed
14:4	70-9880	2	Spring-Return
14:5	70-9840	2	Shoe-Brake
15	321-4	8	Screw-HH
16	10-6821	2	Brake Drum ASM
16:2	10-6850	1	Drum-Brake
16:3	10-6870-03	1	Hub-Wheel
16:4	85-6540	4	Stud-Drive
19	26-3790	2	Nut-Lock
20	98-1997	1	LH Brake Lever ASM

Ref. No.	Part No.	Qty.	Description
21	3220-20	2	Nut-Jam
22	98-4367	2	Clevis - Adjustable
23	3272-10	2	Pin-Cotter
24	94-9573-01	2	Mount-Lever, RH Brake
25	323-7	4	Screw-HH
26	3296-29	4	Nut-Lock
27	32120-72	2	Ring-Snap
28	9202574	2	Washer-Flat
29	106950	2	Bushing
30	98-1998	1	RH Brake Lever ASM
31	98-1996	2	Rod - Brake
32	3220-2	2	Nut
33	282-2	2	Yoke
34	98-1988	1	Torsion Shaft ASM
35	3296-39	4	Nut-Lock, NI
36	283-62	3	Pin-Clevis
37	3256-2	4	Washer-Flat



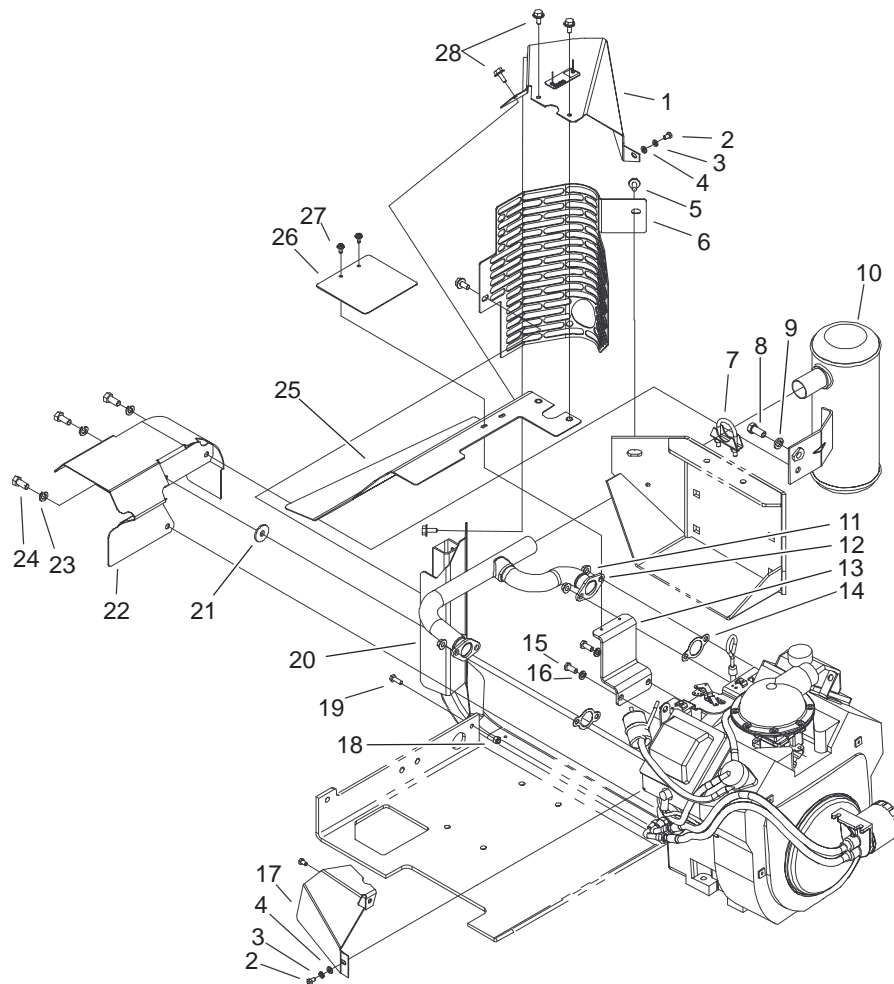
Sheet No.:10

## Steering Control Assembly

Ref. No.	Part No.	Qty.	Description
1	322-5	4	Screw-HH
2	2411-52	2	Bearing-Rod End, RH
3	3296-29	2	Nut-Lock
4	3296-47	2	Nut-Lock, NI
5	323-4	4	Screw-HH
6	27-2320	2	Bearing
7	94-9515	1	Shaft - Control
8	3296-39	8	Nut-Lock, NI
9	104-5141	2	Damper-Bidirectional
10	104-5113-03	1	Channel-Mount, Control
11	33024-00	4	Nut-Lock
12	94-9524	1	Spacer - Control
13	323-6	4	Screw-HH
14	32121-103	2	Pin-Spring
15	104-7795	1	LH Control Handle ASM
15:1	94-9490	1	Grip - Cushion
16	9202574	2	Washer-Flat
17	104-5115	1	RH Control Handle ASM
17:1	94-9490	1	Grip - Cushion
17:3	256-76	2	Bushing
17:4	302-5	1	Fitting-Grease
18	3256-39	1	Washer-Flat
19	2411-53	2	Bearing-Rod End, LH

Ref. No.	Part No.	Qty.	Description
20	3220-20	2	Nut-Jam
21	94-4717	1	Rod-Control, RH
22	3220-2	2	Nut
23	94-9594-03	1	Control Hub ASM
24	94-4718	1	Rod-Control, LH

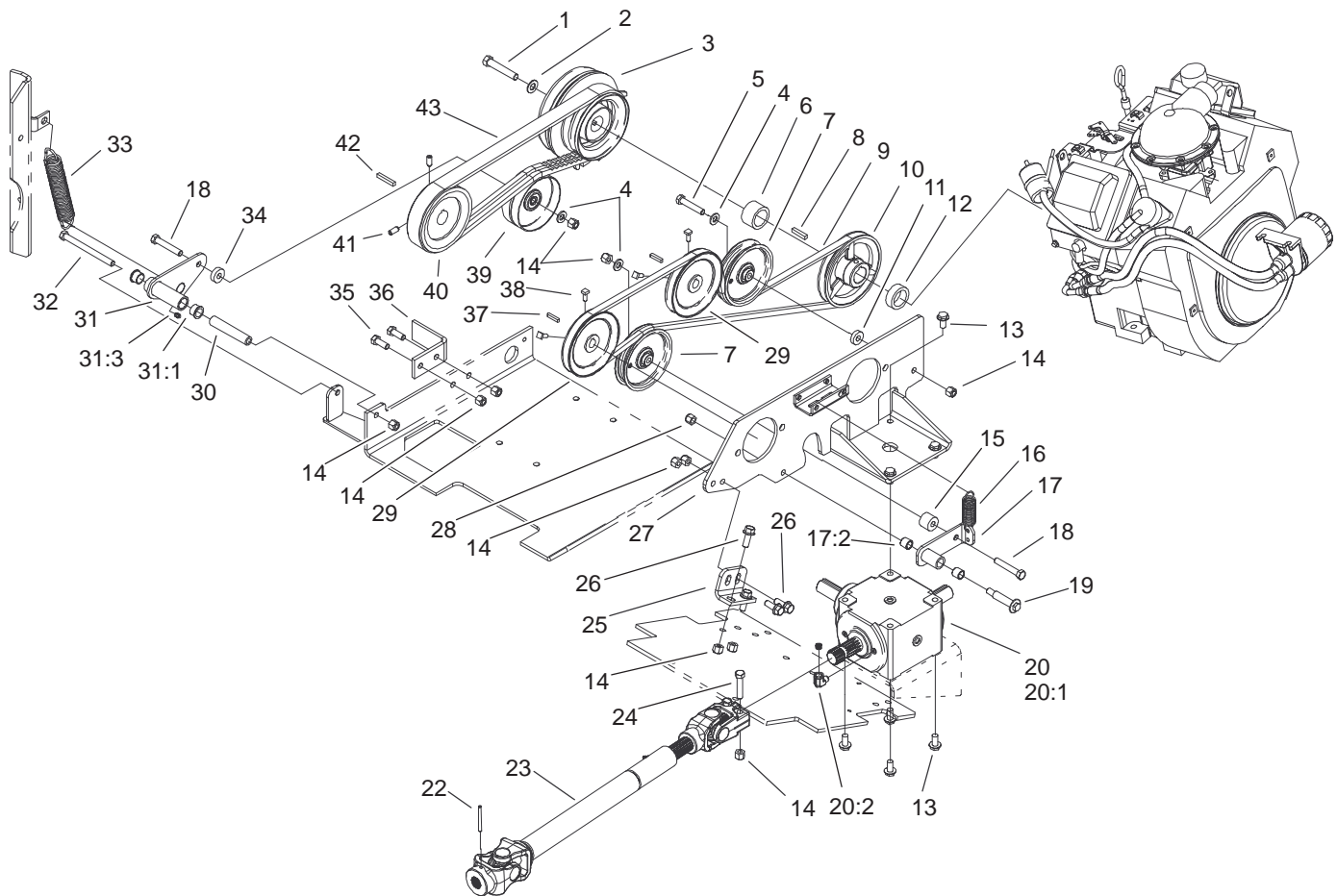




Sheet No.:12

## Exhaust Assembly

Ref. No.	Part No.	Qty.	Description	Ref. No.	Part No.	Qty.	Description
1	98-4368	1	Rear Heat Baffle ASM	26	98-1979	1	Panel-Access, Baffle
2	42-9430	2	Bolt-Washer	27	98-4386	2	Screw-Torx
3	48-8020	2	Washer-Spring	28	3234-4	4	Screw-HHF
4	33093-00	2	Washer-Flat				
5	32144-14	1	Screw-HWH				
6	98-1980-03	1	Guard - Muffler				
7	2112-11	1	Clamp-Muffler				
8	324-4	1	Screw-HH				
9	3253-6	1	Washer-Lock				
10	94-9495	1	Muffler				
11	92-6780	4	Nut-HF				
12	94-9494	1	Manifold				
13	94-9561	1	Bracket-Shield, Manifold				
14	93-0350	2	Gasket - Exhaust				
15	33114-020	2	Screw-HH				
16	3253-4	2	Washer-Lock				
17	98-1349	1	Baffle - Heat, Front				
18	3296-42	1	Nut-Lock, NI				
19	321-4	1	Screw-HH				
20	98-1329	1	Baffle - Heat, Middle				
21	2844	1	Washer				
22	98-1326	1	Baffle - Heat, Lower				
23	3253-5	3	Washer-Lock				
24	323-5	3	Screw-HH				
25	98-1967	1	Top Heat Baffle ASM				



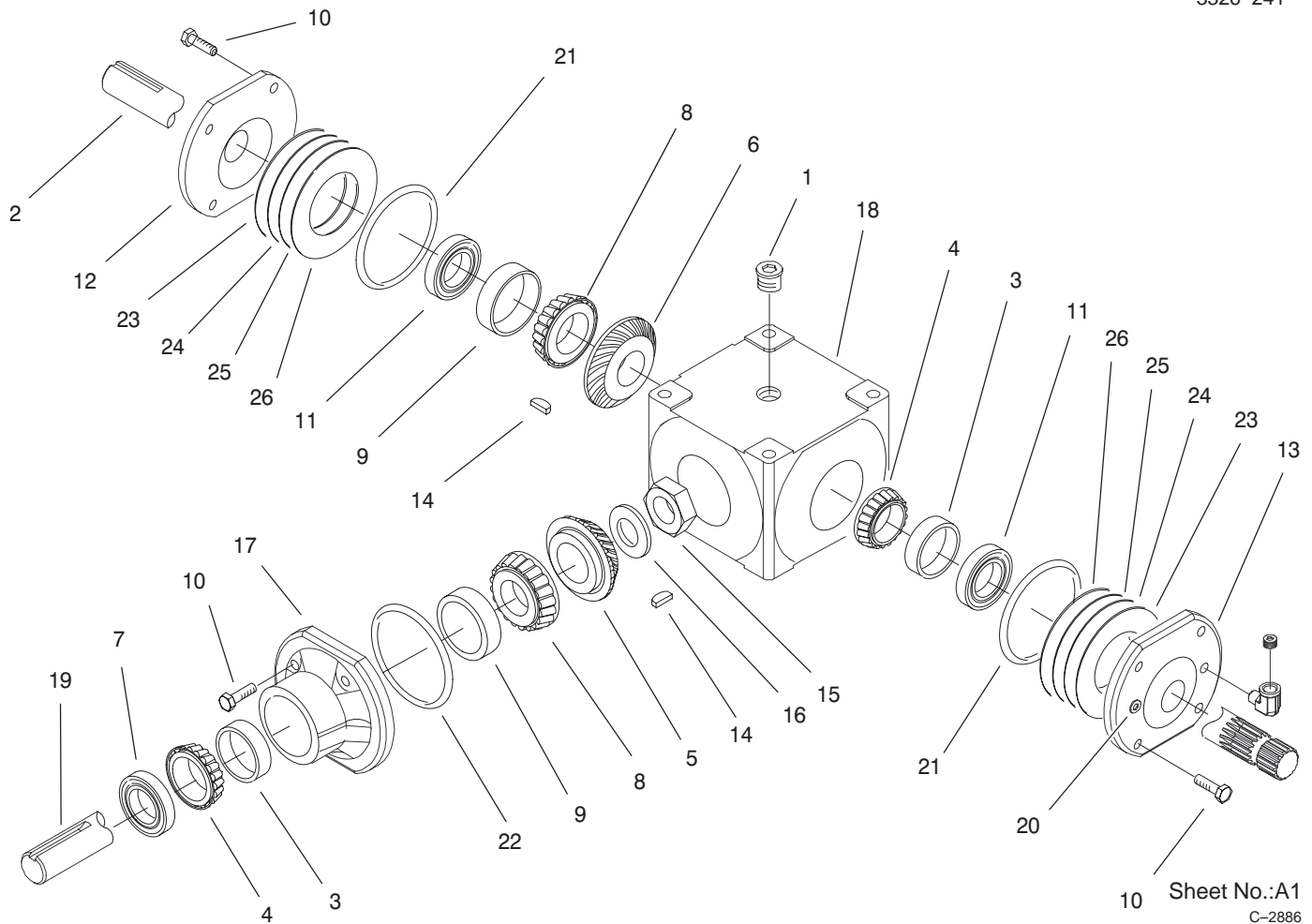
Sheet No.:13

## PTO / Hydro Drive Assembly

Ref. No.	Part No.	Qty.	Description
1	3212-10	1	Screw-HH
2	3256-25	1	Washer-Flat
3	104-7756	1	Clutch-Magnetic, Electro
4	3256-24	3	Washer-Flat
5	323-10	1	Screw-HH
6	94-4689	1	Spacer- Shaft, Engine
7	93-1622	2	Pulley-Idler
8	13-2840	1	Key-Square
9	94-4607	1	V-Belt
10	94-4628	1	Pulley-Engine
11	9202204	1	Washer
12	94-4688	1	Spacer-Shaft, Engine
13	3234-1	8	Screw-HHF
14	3296-39	13	Nut-Lock, NI
15	94-4792	1	Spacer-Arm, Idler
16	94-9599	1	Spring - Extension
17	95-1950	1	Idler Arm ASM
17:2	256-154	2	Bushing
18	323-11	2	Screw-HH
19	27-6230	1	Bolt-Wheel
20	104-2433	1	Gearbox ASM
☆20:1		1	Gearbox - PTO
20:2	2811-7	1	Elbow
22	32121-48	1	Pin-Spring
23	94-4722	1	Shaft - Drive

Ref. No.	Part No.	Qty.	Description
24	323-19	2	Screw-HH
25	94-4787-03	1	Mount - Plate, Pump
26	3234-11	4	Screw-HHF
27	104-7785-03	1	Pump Mount ASM
28	3296-6	1	Nut-Lock, NI
29	80-8170	2	Pulley - Pump, Traction
30	100-5837	1	Spacer-Idler
31	100-5840	1	Idler Arm ASM
31:1	109859	2	Bushing
31:3	302-58	1	Fitting-Grease
32	323-23	1	Screw-HH
33	104-7794	1	Spring - Extension
34	94-4685	1	Spacer - Idler
35	323-6	2	Screw-HH
36	98-1301-03	1	Stop - Clutch
37	80-6090	2	Key - Pump
38	3241-5	4	Screw-Set
39	104-7791	1	Pulley-Flat
40	94-4629	1	Pulley - Clutch
41	3246-6	2	Screw-Set, HSH
42	67-7490	1	Key
43	99-0219	1	Belt-V, Banded

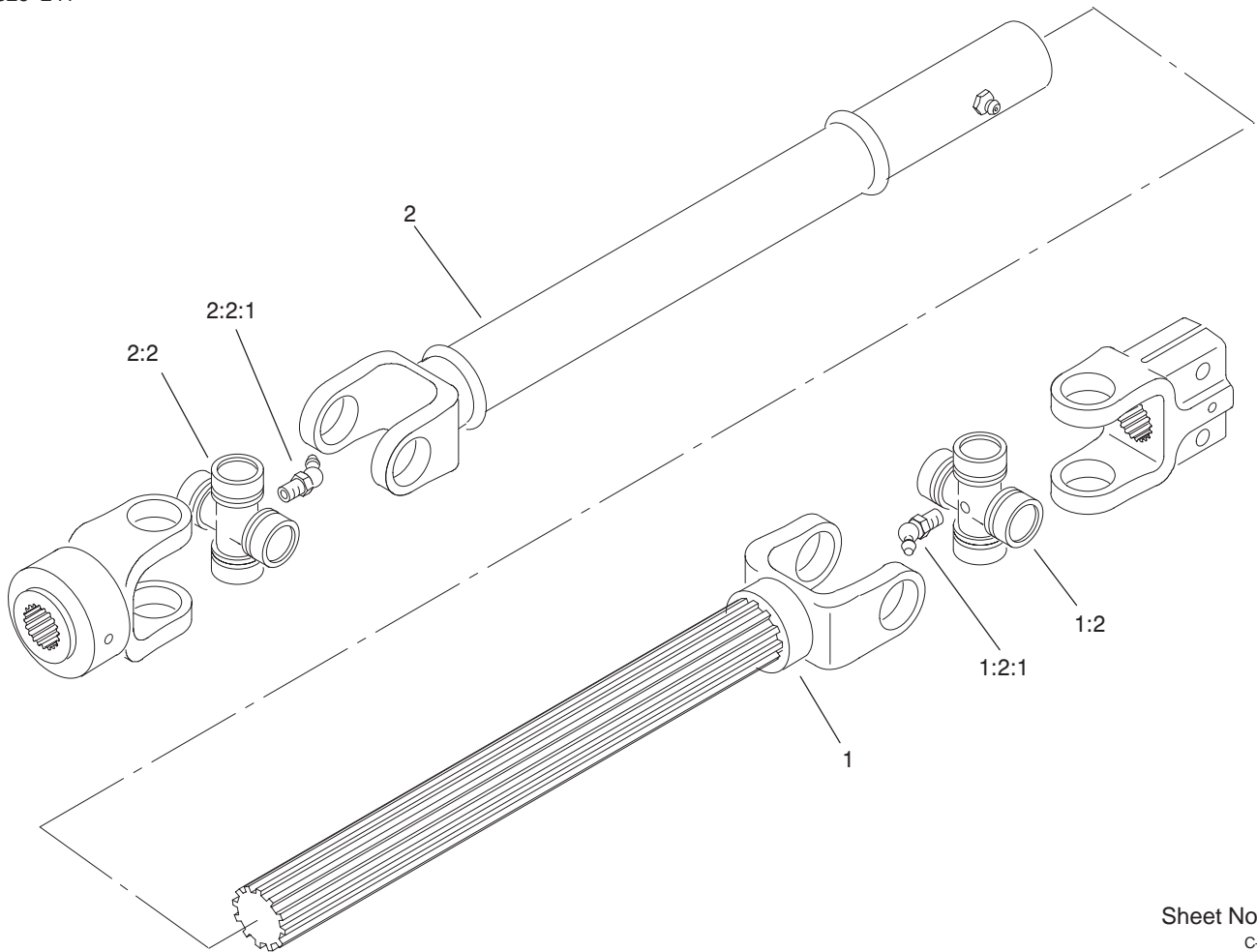
☆ Not serviced



## Gearbox Assembly No. 104-2433

Ref. No.	Part No.	Qty.	Description
1	100-5812	3	Plug
2	104-2423	1	Shaft – Cross
3	100-4571	2	Bearing–Cup
4	100-4572	2	Bearing–Cone
5	100-5814	1	Gear – Spiral, RH
6	100-5815	1	Gear – Spiral, LH
7	100-4575	1	Seal
8	100-5816	2	Bearing–Cone
9	100-5817	2	Bearing–Cup
10	100-5818	12	Screw–HH
11	100-5819	2	Seal
12	100-5820	1	Cap – End
13	100-5821	1	End Cap W/ Drain Plugs
14	100-5822	2	Key
15	100-5823	1	Nut – Lock
16	100-5824	1	Washer
17	100-5825	1	Housing – Pinion
18	100-5826	1	Case
19	104-2424	1	Shaft – Pinion
20	100-4583	2	Plug
21	100-5847	2	O–Ring
22	100-5848	1	O–Ring
23	100-7757	1	Shim – Green
24	100-7758	1	Shim – Blue

Ref. No.	Part No.	Qty.	Description
25	100-7759	1	Shim – Brown
26	100-7760	1	Shim – Yellow



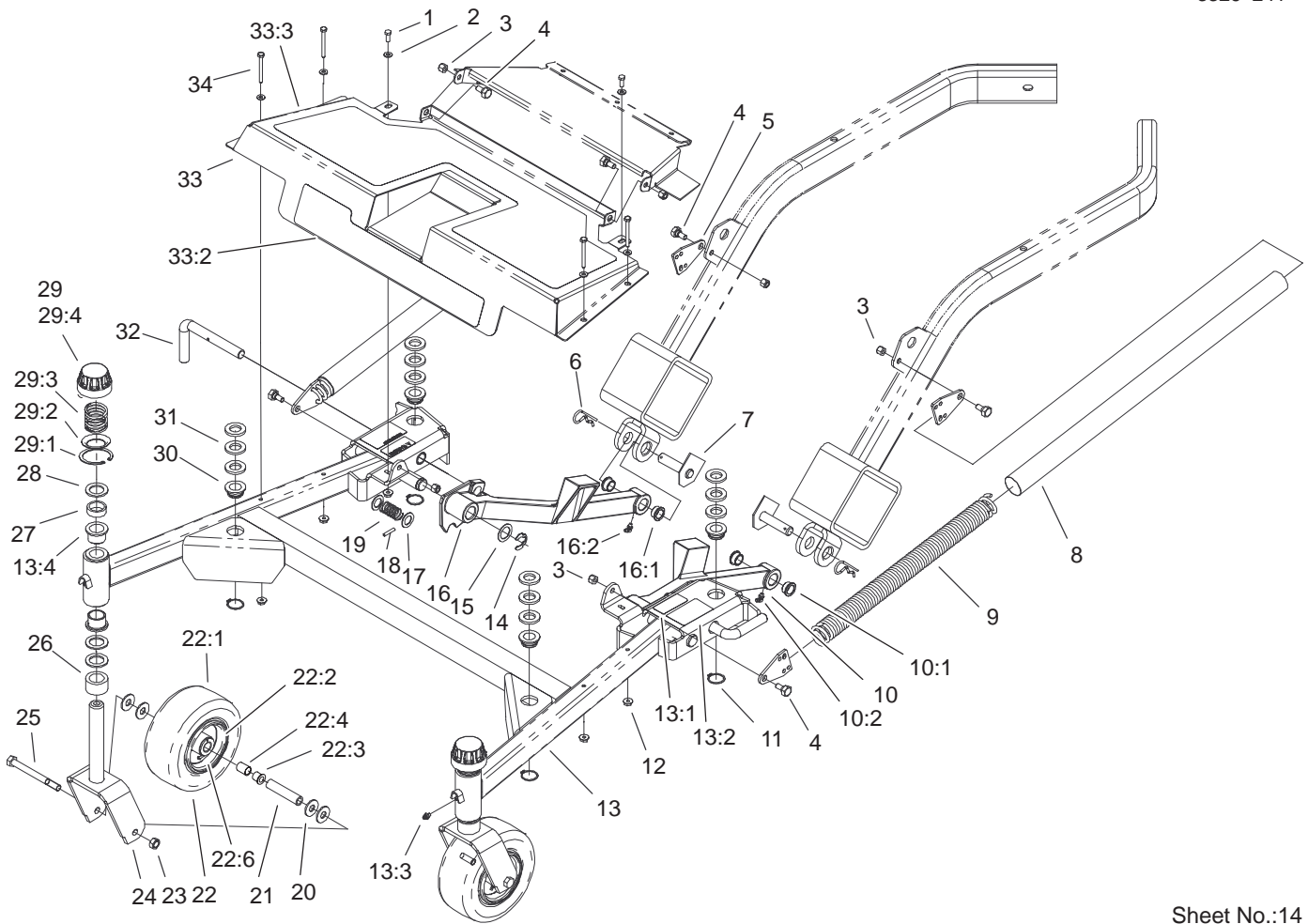
Sheet No.:A2  
C-2971

### Drive Shaft Assembly No. 94-4722

Ref. No.	Part No.	Qty.	Description
1	100-7765	1	Joint & Shaft Half ASM
1:2	54-9180	1	U-Joint Kit
*1:2:1	62-3820	1	Fitting-Grease
2	100-7766	1	Joint & Tube Half ASM
2:2	54-9180	1	U-Joint Kit
*2:2:1	62-3820	1	Fitting-Grease

Ref. No.	Part No.	Qty.	Description

\* Not illustrated



Sheet No.:14

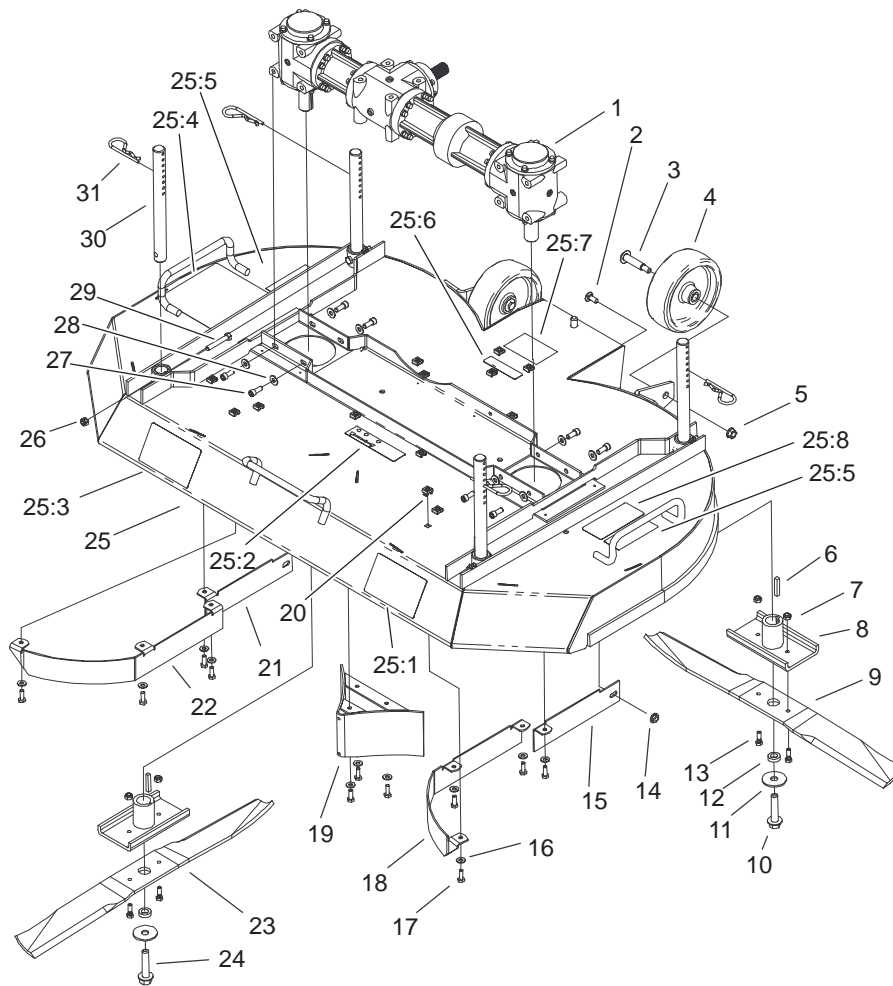
## Carrier Frame Assembly

Ref. No.	Part No.	Qty.	Description
1	321-4	2	Screw-HH
2	3256-22	6	Washer-Flat
3	3296-39	6	Nut-Lock, NI
4	46-3380	6	Bolt-Shoulder
5	94-4750	4	Plate - End, Spring
6	3290-343	2	Pin-Hair
7	94-4755	2	Pivot Pin ASM
8	94-9550	2	Cover - Spring
9	94-4664	2	Spring - Extension
10	105-1645	1	LH Pusharm ASM
10:1	27-9080	2	Bearing-Flange
10:2	302-60	1	Fitting-Lube
11	32120-33	4	Ring-Retaining
12	32128-33	6	Nut-HF
13	104-0383	1	Carrier Frame ASM
13:1	93-6696	2	Decal-Loaded, Spring
13:2	104-0381	2	Decal - HOC, Ce
13:3	302-5	2	Fitting-Grease
13:4	94-1291	4	Bushing-Special
14	32151-91	2	Ring-Retaining
15	9202514	2	Washer
16	105-1646	1	RH Pusharm ASM
16:1	27-9080	2	Bearing-Flange
16:2	302-60	1	Fitting-Lube
17	9202254	4	Washer
18	32121-79	2	Pin-Roll

Ref. No.	Part No.	Qty.	Description
19	98-1339	2	Spring - Compression
20	3256-6	8	Washer-Flat
21	68-8980	2	Spanner-Tire
22	99-1268	2	Castor Wheel ASM
22:1	93-9939	1	Tire
22:2	100-2348	1	Rim ASM
22:3	62-5580	2	Bearing-Outside
22:4	62-5570	1	Bearing-Roller
*22:5	100-5832	1	Tube W/ Valve
22:6	302-11	1	Fitting-Lube, 45°
23	32153-5	2	Nut-Lock
24	99-0295-01	2	Castor Fork ASM
25	325-19	2	Screw-HH
26	93-1167	2	Spacer - Castor
27	63-0070	2	Spacer
28	3-6781	6	Washer-Thrust
29	92-8862	2	HOC Cap ASM
29:1	92-5581	1	Ring-Retaining
29:2	92-5583	1	Washer-Cap
29:3	92-5584	1	Spring-Compression
29:4	92-8861	1	Cap-HOC
30	1-513336	4	Bushing - Deck
31	1-513338	12	Washer - Flat
32	100-2389	2	Pin - Pivot
33	100-7774	1	Footrest ASM
33:2	100-7770	1	Decal - Z Master, Toro

\* Not illustrated



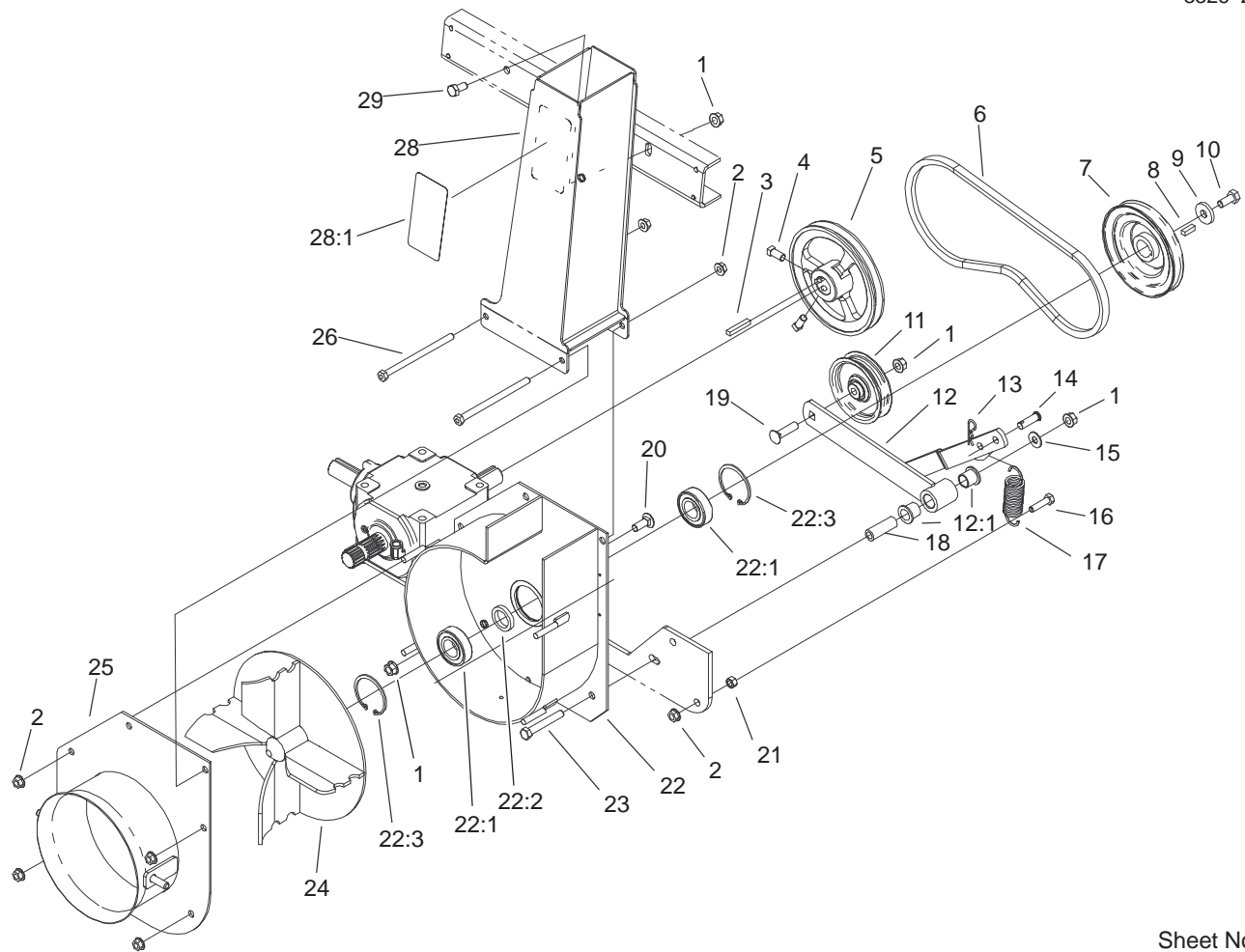


Sheet No.:15

## Deck Assembly

Ref. No.	Part No.	Qty.	Description	Ref. No.	Part No.	Qty.	Description
1	104-2446	1	Kit-Gearbox	25	104-0380	1	Deck ASM
2	3230-23	2	Screw-CARR	25:1	100-7788	1	Decal - Dds
3	92-1057	2	Bolt-Shoulder	25:2	100-5829	1	Decal-Fluid, Transmission
4	95-4102	2	Wheel	25:3	105-1629	1	Decal-122cm
5	32128-21	2	Nut-HF	25:4	98-4358	1	Decal-Danger
6	67-7490	2	Key	25:5	98-4369	2	Decal-Warning
7	3296-16	4	Nut-Lock, NI	25:6	100-3613	1	Decal-Warning
8	98-0810-01	2	Blade Retainer ASM	25:7	93-7010	1	Decal-Danger
9	99-4942	1	Blade - 25", LH	25:8	98-4363	1	Decal-Torque, Blade Bolt
10	92-5816	1	Bolt-Blade	26	3296-29	4	Nut-Lock
11	86-1990	2	Washer	27	104-0356	8	Screw - HSH
12	99-0217	2	Spacer	28	100-2400	8	Washer - Hard
13	99-0283	4	Bolt - Shear	29	322-10	4	Screw-HH
14	32128-13	2	Nut-HF	30	100-2393	4	Pin - Deck
15	104-0388-01	1	Bracket-Discharge, LH	31	3290-256	4	Pin-Hair
16	3256-22	15	Washer-Flat				
17	321-4	15	Screw-HH				
18	98-3015-01	1	Baffle - LH				
19	100-9655-01	1	Center Baffle ASM				
20	32115-5	15	Nut-Retained				
21	104-0389-01	1	Bracket-Discharge, RH				
22	98-3016-01	1	Baffle - RH				
23	99-4941	1	Blade - 25", RH				
24	104-2444	1	Bolt-Blade, LH Thread				



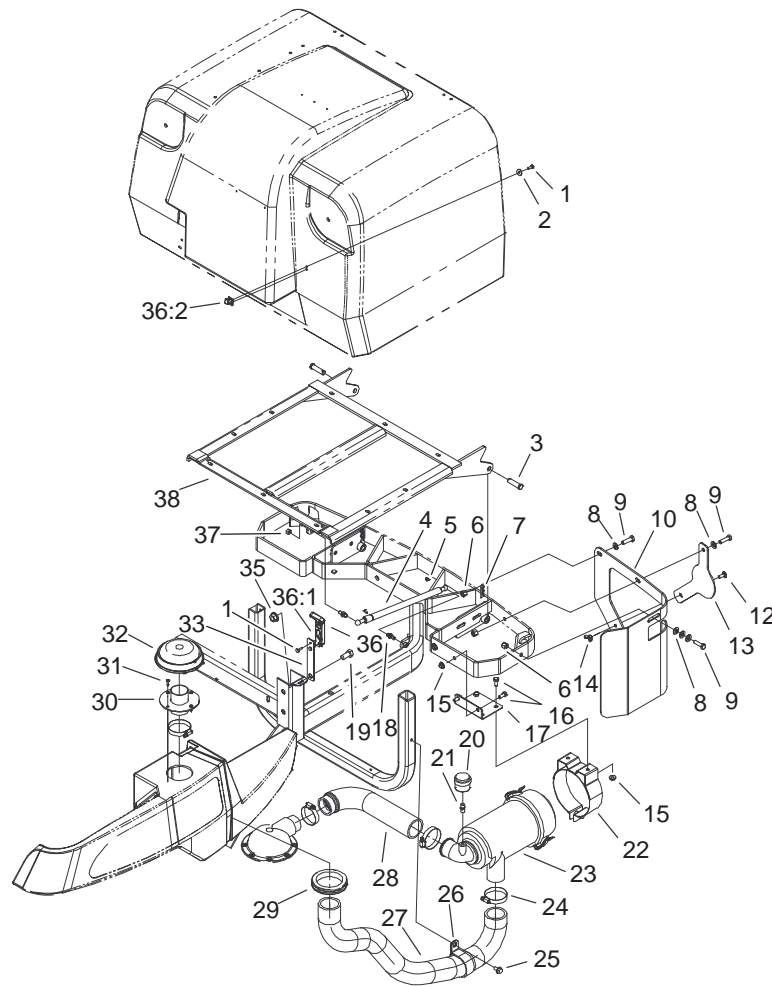


Sheet No.:17

## Blower Assembly

Ref. No.	Part No.	Qty.	Description
1	32128-21	4	Nut-HF
2	32128-25	7	Nut-Flange
3	67-7490	1	Key
4	3242-4	2	Screw-Set, SQH
5	98-4392	1	Pulley-Gearbox
6	98-4393	1	V-Belt
7	99-0287	1	Pulley - Impeller
8	20-9540	1	Key
9	65-8680	1	Washer - Thrust, Plain
10	323-5	1	Screw-HH
11	56-4920	1	Pulley-Idler
12	105-1626	1	Idler Arm ASM
12:1	256-90	2	Bushing-Flange
13	3290-467	1	Pin-Hair
14	283-2	1	Pin-Clevis
15	3256-3	1	Washer-Flat
16	322-6	1	Screw-HH
17	67-1440	1	Spring-Extension
18	95-6448	1	Spacer
19	3231-4	1	Screw-CARR
20	3231-2	1	Screw-CARR
21	3217-6	1	Nut-Hex
22	105-1627	1	Blower Housing ASM
22:1	251-82	2	Bearing-Ball
22:2	95-6427	1	Spacer - Bearing
22:3	32120-8	2	Ring-Snap

Ref. No.	Part No.	Qty.	Description
23	323-12	1	Screw-HH
24	99-0296-03	1	Impeller ASM
25	100-7795-03	1	Cover ASM
26	322-29	2	Screw-HH
28	105-1662	1	Impeller Chute ASM
28:1	93-7010	1	Decal-Danger
29	323-4	1	Screw-HH

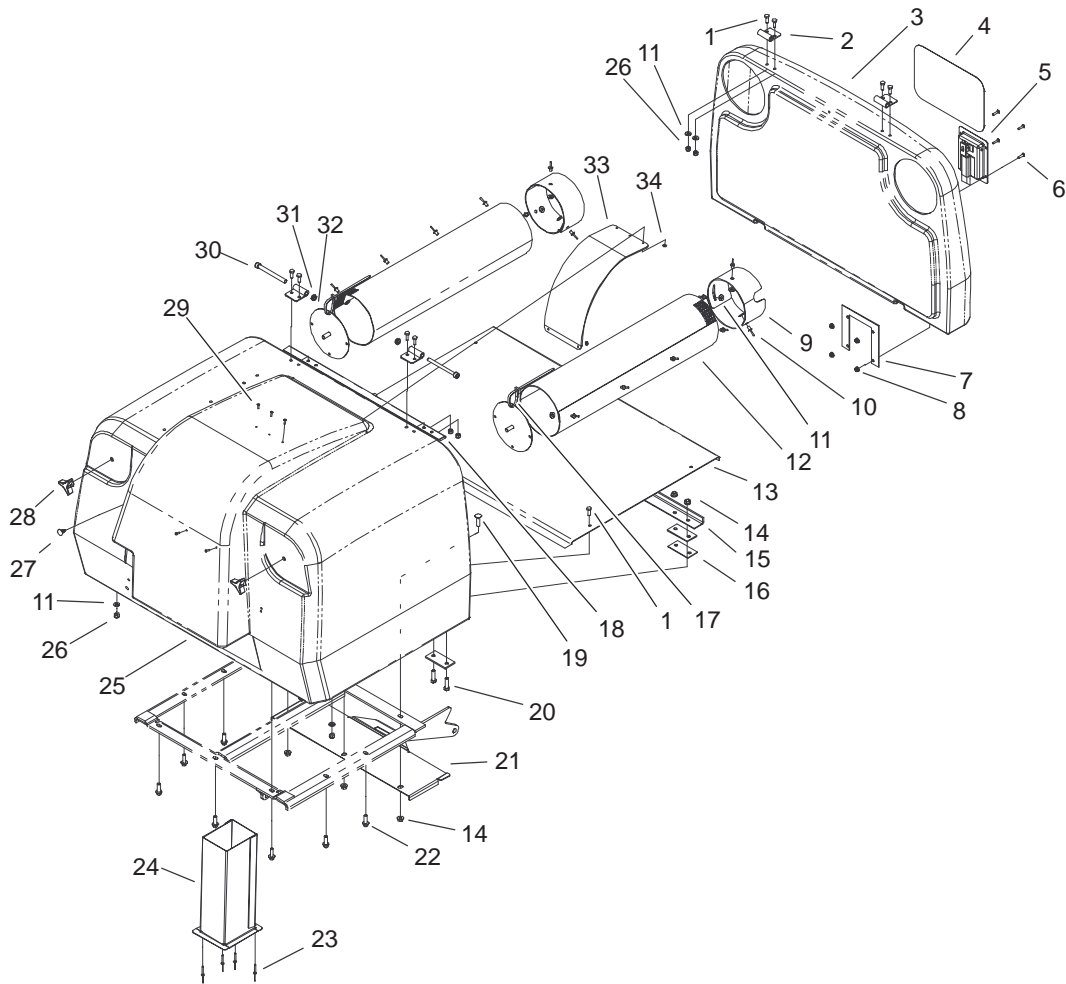


Sheet No.:18

## Air Cleaner and Bagger Frame Assembly

Ref. No.	Part No.	Qty.	Description	Ref. No.	Part No.	Qty.	Description
1	3290-134	3	Screw	24	2412-130	4	Clamp-Hose
2	3256-61	1	Washer-Flat	25	32144-14	1	Screw-HWH
3	283-40	2	Pin-Clevis	26	2412-102	1	R-Clamp
4	98-3043	1	Spring-Gas	27	100-2405	1	Hose
5	98-3044	2	Clip-Safety	28	100-2406	1	Hose
6	3296-39	3	Nut-Lock, NI	29	240-8	1	Grommet-Rubber
7	3290-355	2	Pin-Hair	30	100-2411-03	1	Flanged Connector ASM
8	3256-24	5	Washer-Flat	31	32144-124	4	Screw-PPH
9	323-7	3	Screw-HH	32	100-2436	1	Hood
10	104-0355-03	1	Guard - Filter, Air	33	105-1664	1	Plate-Latch
12	3230-23	1	Screw-CARR	35	32128-23	1	Nut-HF
13	104-0364-03	1	Plate - Cover	36	94-5626	1	Latch-Draw, Flexible
14	32103-29	1	Nut-Wing	36:1	100-5806	1	Handle-Latch
15	32128-13	4	Nut-HF	36:2	100-5807	1	Keeper-Latch
16	322-3	4	Screw-HH	37	32152-1	2	Nut-Lock, NI
17	100-2412-03	1	Bracket	38	104-2432-03	1	Grass Bin Frame ASM
18	88-6770	2	Stud-Ball				
19	325-4	1	Screw-HH				
20	104-7755	1	Indicator-Filter, Air				
21	94-1416	1	Indicator Adapter ASM				
22	100-2435	1	Bracket-A/C				
23	100-2434	1	Cleaner-Air				
*23:1	100-4557	1	Filter - Safety				
*23:2	100-4556	1	Element-A/C				
23:3	99-3174	2	Clip-Cleaner, Air				
*23:4	99-3175	1	Valve-Ejector, Dust				

\* Not illustrated

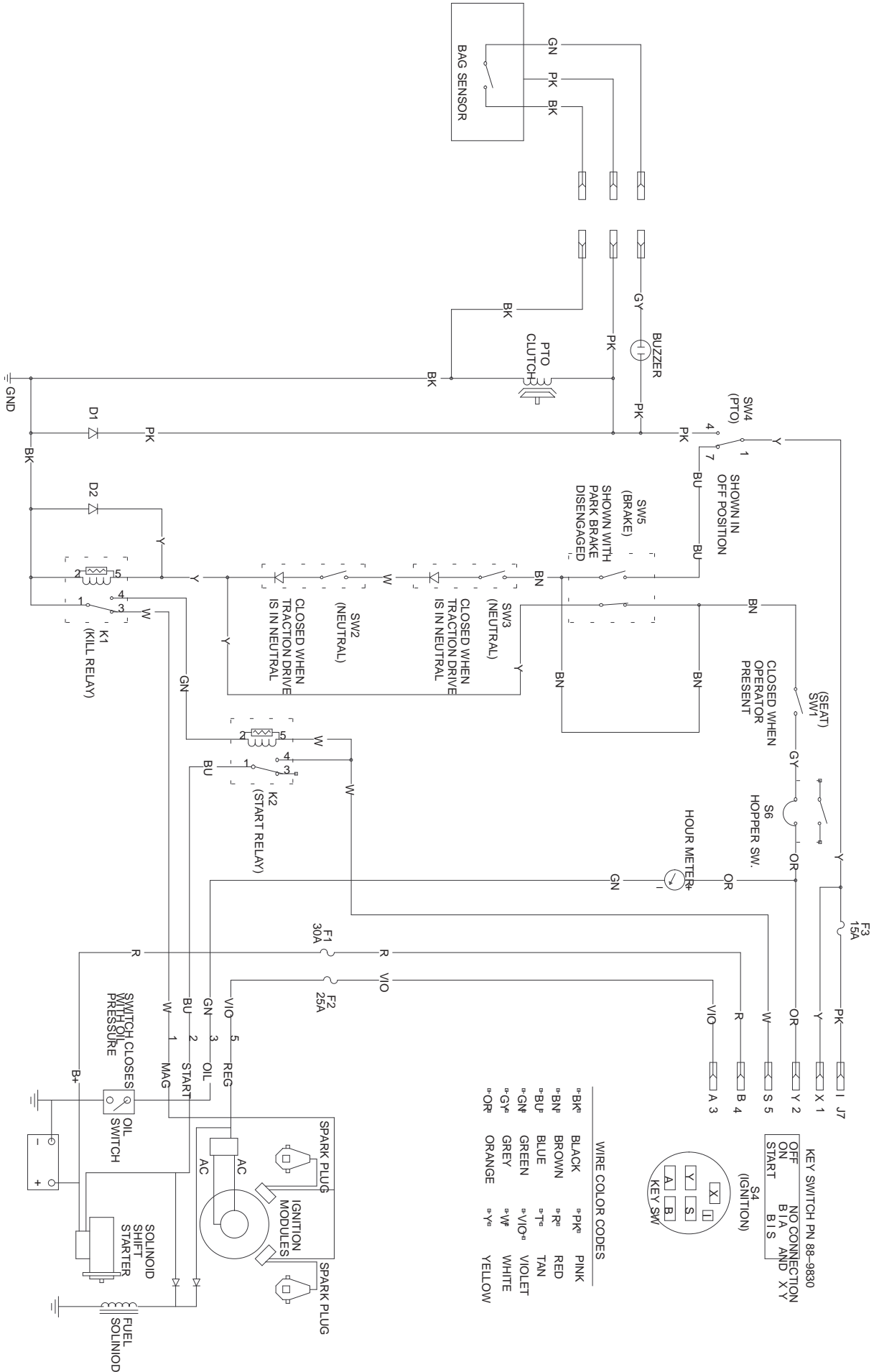


Sheet No.:19

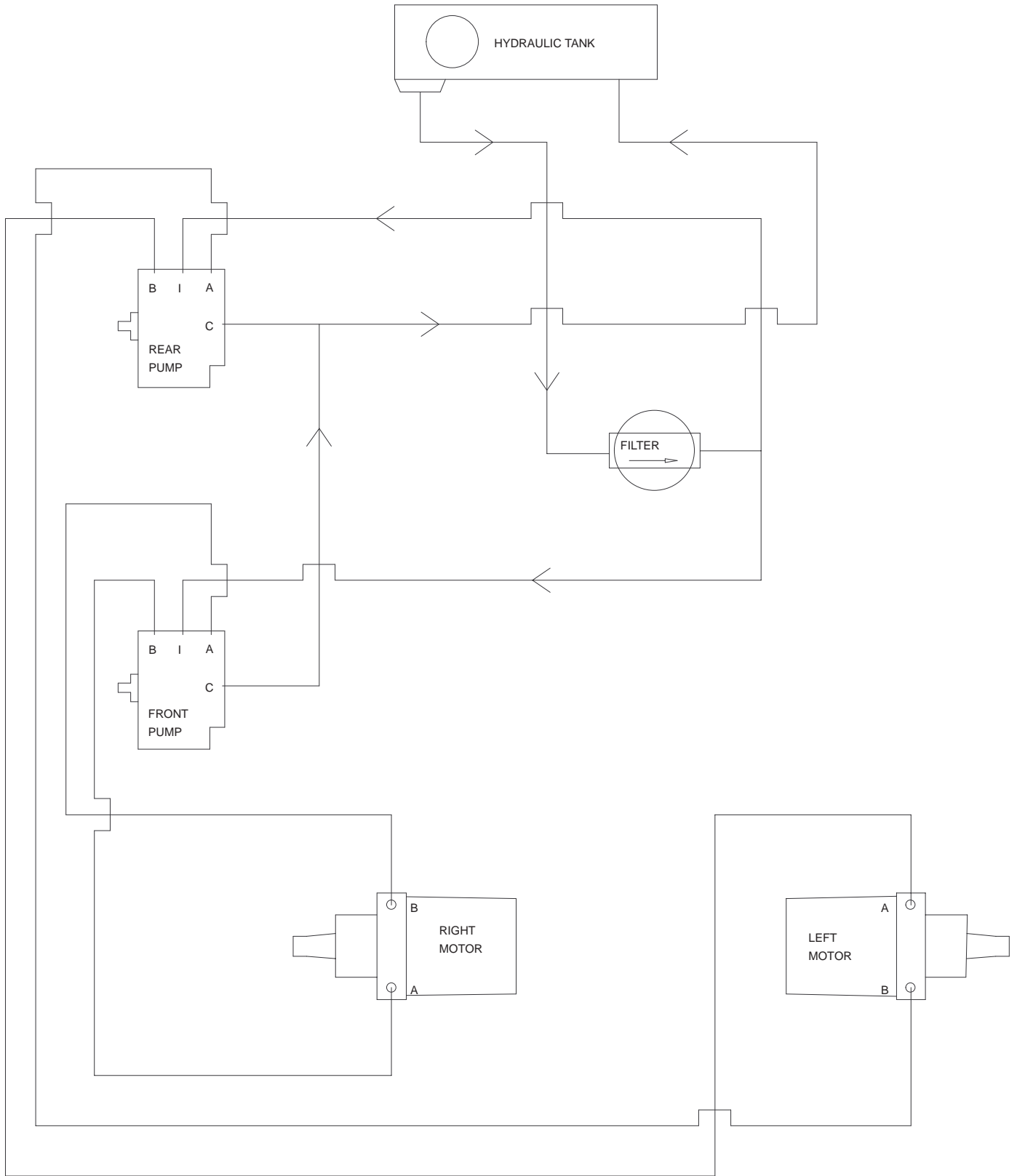
## Bagger Assembly

Ref. No.	Part No.	Qty.	Description	Ref. No.	Part No.	Qty.	Description
1	321-4	10	Screw-HH	27	104-0395	1	Plug - Plastic
2	98-3027-03	4	Hinge	28	233-52	2	Knob
3	100-9617	1	Cover - Bin	29	3269-17	5	Rivet-Pop
4	67-7310	1	Decal - Toro Logo, 7"	30	3274-102	2	Screw-HSH
5	100-9631	1	Lever - Latch	31	3296-59	2	Nut-Lock NI
6	104-2408	4	Screw-Head, Button	32	95-6444-03	2	Plate ASM
7	100-9632-03	1	Plate - Latch	33	100-4552	1	Plate - Wear
8	32128-17	4	Nut-Lock, Flange	34	3256-12	5	Washer-Flat
9	100-5845	2	Ring - Support				
10	3290-412	14	Rivet				
11	3256-22	22	Washer-Flat				
12	95-6441	2	Screen				
13	100-4550-03	1	Floor - Hopper				
14	32128-25	14	Nut-Flange				
15	98-0849-03	1	Flange - Bin				
16	98-3004	6	Spacer				
17	3290-378	8	Tie-Cable				
18	98-3036-03	1	Angle - Bin				
19	3230-3	3	Screw-CARR				
20	322-6	4	Screw-HH				
21	100-7773-03	1	Plate - Latch				
22	3234-17	7	Screw-HHF				
23	98-7310	4	Rivet				
24	95-6482-03	1	Chute ASM				
25	104-2417	1	Bin - Grass				
26	3296-42	10	Nut-Lock, NI				

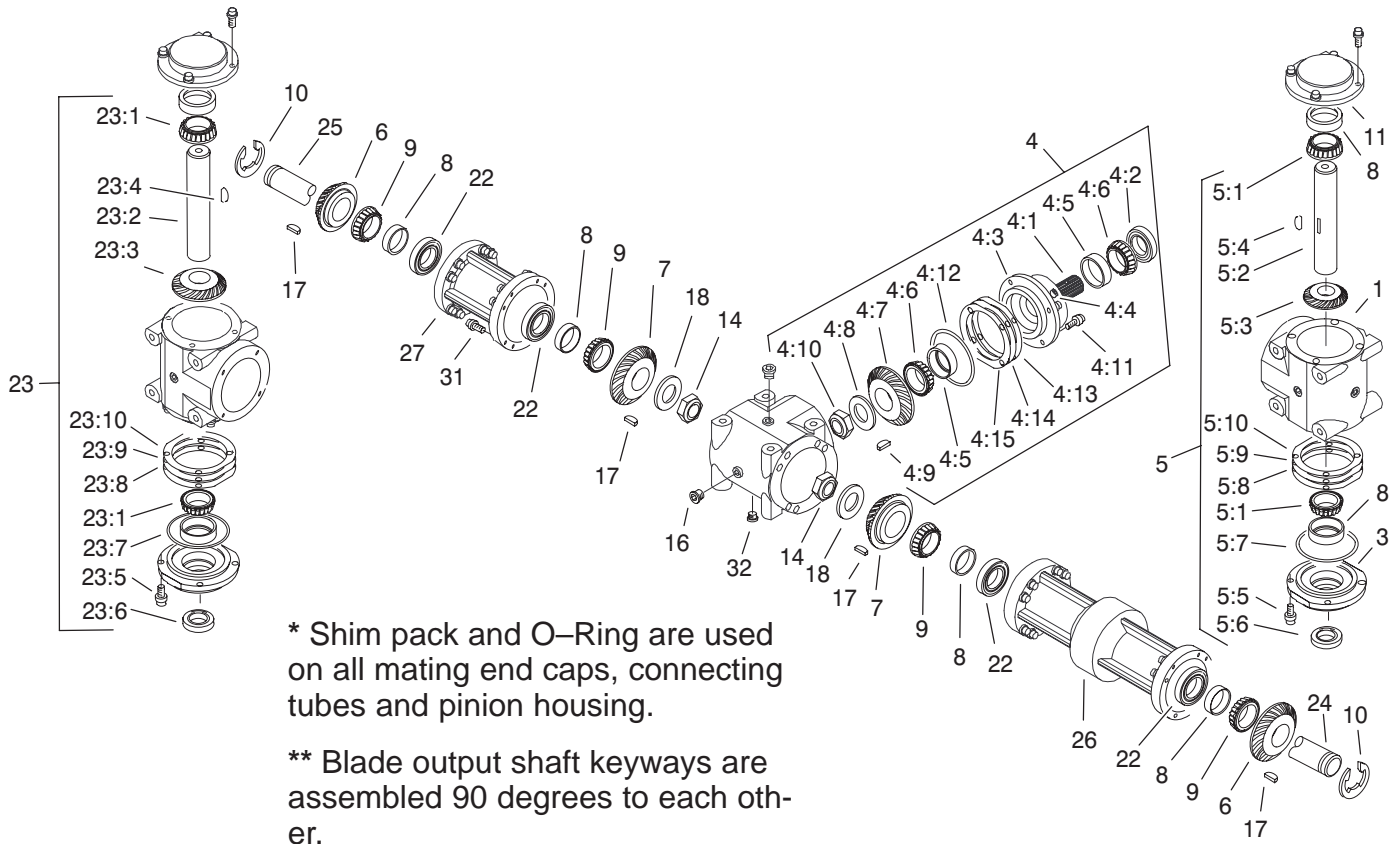
# Electrical Schematic



# Hydraulic Schematic







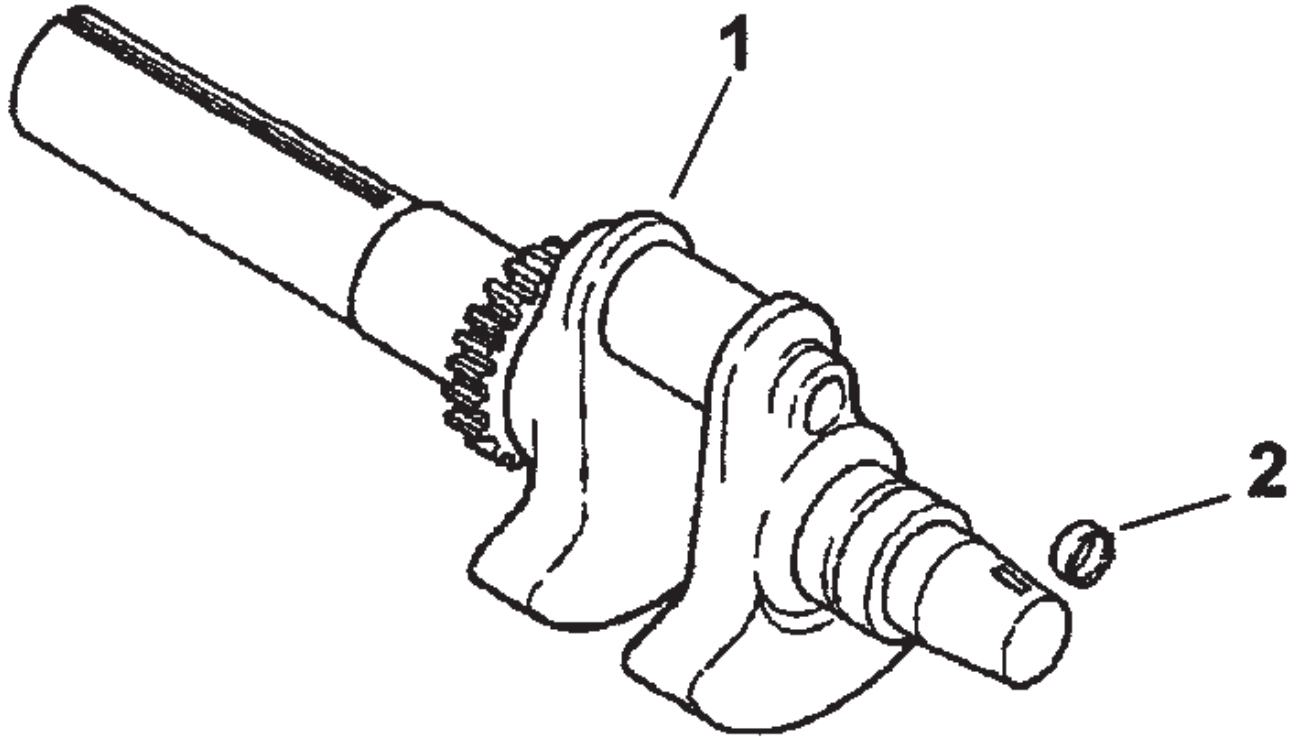
Sheet No.: A1  
C-2839

## Gearbox Assembly

Ref. No.	Part No.	Qty.	Description
1	100-4564	3	Case
3	100-4566	2	Cap - End, Open
4	100-7755	1	Splined Pinion ASM
4:1	100-4567	1	Shaft - Input, Splined
4:2	100-4575	1	Seal
4:3	100-4565	1	Housing - Pinion
4:4	100-4583	1	Plug
4:5	100-4571	2	Bearing-Cup
4:6	100-4572	2	Bearing-Cone
4:7	100-4569	1	Gear - 27 Tooth
4:8	100-4581	1	Washer
4:9	100-4580	1	Key - Woodruff
4:10	100-4577	1	Nut - Jam
4:11	100-4578	4	Screw
4:12	100-4582	1	O-Ring
4:13	100-4591	2	Shim - Brown
4:14	100-4592	1	Shim - Blue
4:15	100-4593	1	Shim - Green
5	100-7754	1	LH Shaft ASM
5:1	100-4572	2	Bearing-Cone
5:2	100-4568	1	Shaft - Cross, A/D
5:3	100-4570	1	Gear - 29 Tooth
5:4	100-4580	1	Key - Woodruff
5:5	100-4578	4	Screw
5:6	100-4576	1	Seal
5:7	100-4582	1	O-Ring

Ref. No.	Part No.	Qty.	Description
5:8	100-4591	2	Shim - Brown
5:9	100-4592	1	Shim - Blue
5:10	100-4593	1	Shim - Green
6	100-4569	3	Gear - 27 Tooth
7	100-4570	4	Gear - 29 Tooth
8	100-4571	10	Bearing-Cup
9	100-4572	10	Bearing-Cone
10	100-4573	2	Ring - Retaining
11	100-4574	2	Cap - End, Closed
14	100-4577	3	Nut - Jam
16	100-4579	8	Plug
17	100-4580	7	Key - Woodruff
18	100-4581	3	Washer
22	100-4585	4	Seal
23	104-2427	1	RH Shaft ASM
23:1	100-4572	2	Bearing-Cone
23:2	104-2422	1	Shaft - Cross, B/D
23:3	100-4570	1	Gear - 29 Tooth
23:4	100-4580	1	Key - Woodruff
23:5	100-4578	4	Screw
23:6	100-4576	1	Seal
23:7	100-4582	1	O-Ring
23:8	100-4591	2	Shim - Brown
23:9	100-4592	1	Shim - Blue
23:10	100-4593	1	Shim - Green

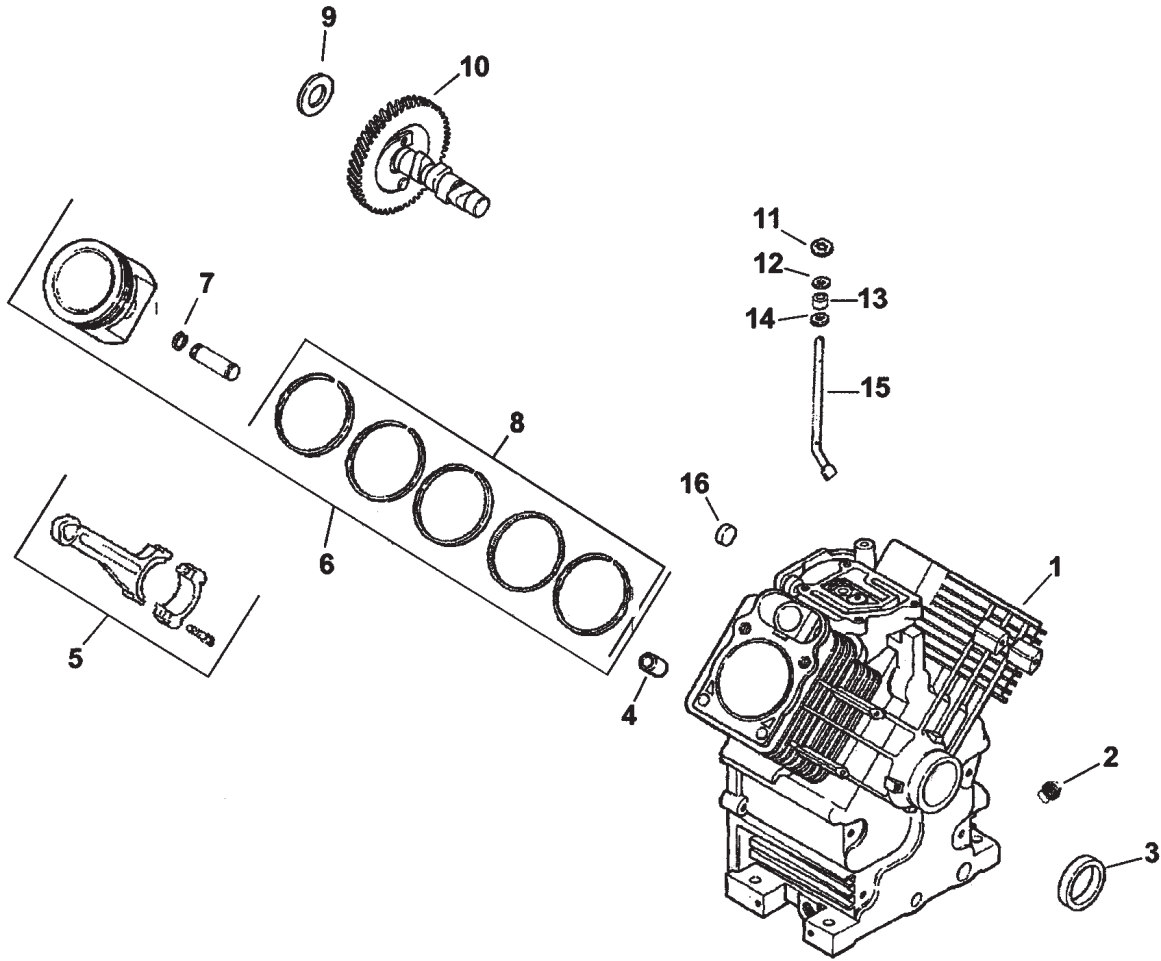




### Crankshaft Assembly Kohler Engine CH20S PS-64650

Ref. No.	Part No.	Qty.	Description
1	24 014 72-S	1	Crankshaft ASM (Includes Ref. # 2)
2	52 139 09-S	1	Plug-Cup

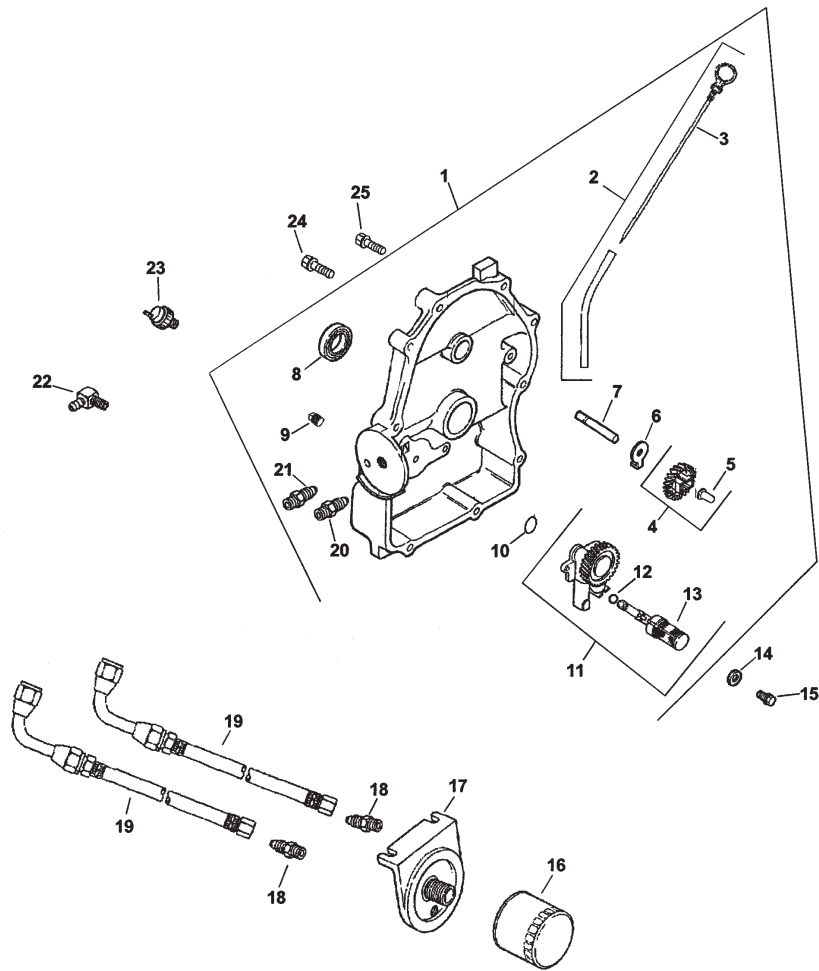
Ref. No.	Part No.	Qty.	Description



## Crankcase Assembly Kohler Engine CH20S PS-64650

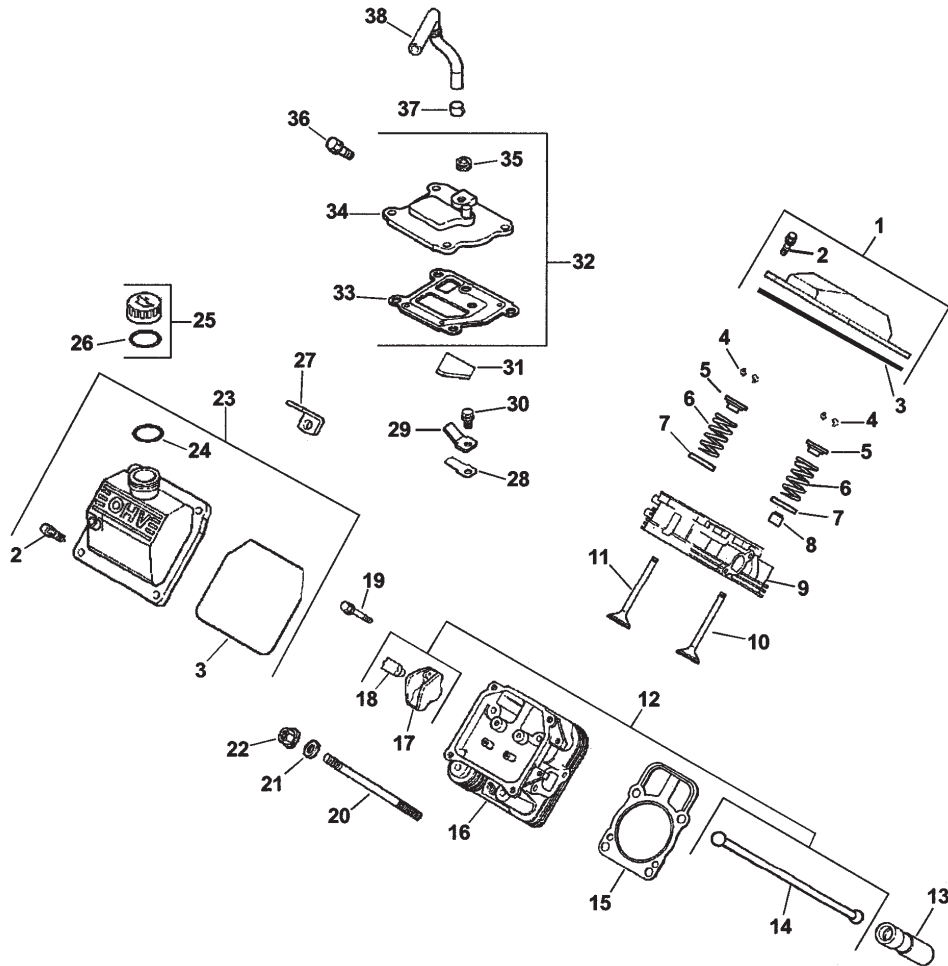
Ref. No.	Part No.	Qty.	Description
1		1	Crankcase (Use: Miniblock 24 782 15)
2	25 139 57-S	2	Plug-SQH
3	24 032 01-S	1	Seal-Front, Oil
4	24 380 13-S	6	Dowel-Locating
5	24 067 13-S	2	Rod-Connecting (STD)
5	24 067 14-S	2	Rod-Connecting (.025)
6	24 874 01-S	2	Set-Piston w/ Ring (STD) (Incl. Ref.#7&8)
6	24 874 02-S	2	Set-Piston w/ Ring (.25)
6	24 874 03-S	2	Set-Piston w/ Ring (.50)
6	24 874 14-S	2	Set-Piston w/ Ring (.08)
7	24 018 01-S	4	Retainer-Pin, Piston
8	24 108 01-S	2	Set-Ring (STD)
8	24 108 02-S	2	Set-Ring (.25)
8	24 108 03-S	2	Set-Ring (.50)
9	12 422 09-S	A/R	Shim-Camshaft
9	12 422 13-S	A/R	Shim-Camshaft
9	12 422 07-S	A/R	Shim-Camshaft
9	12 422 08-S	A/R	Shim-Camshaft
9	12 422 10-S	A/R	Shim-Camshaft

Ref. No.	Part No.	Qty.	Description
9	12 422 11-S	A/R	Shim-Camshaft
9	12 422 12-S	A/R	Shim-Camshaft
10	24 012 10-S	1	Camshaft
11	24 018 09-S	1	Retainer-Ring
12	M-931010-S	1	Washer-Nylon (top)
13	28 032 09-S	1	Seal-Cross Shaft, Governor
14	24 468 15-S	1	Washer (bottom)
15	24 144 33-S	1	Shaft-Cross, Governor
16	52 139 09-S	1	Plug-Cup



## Oil Pan/Lubrication Assembly Kohler Engine CH20S PS-64650

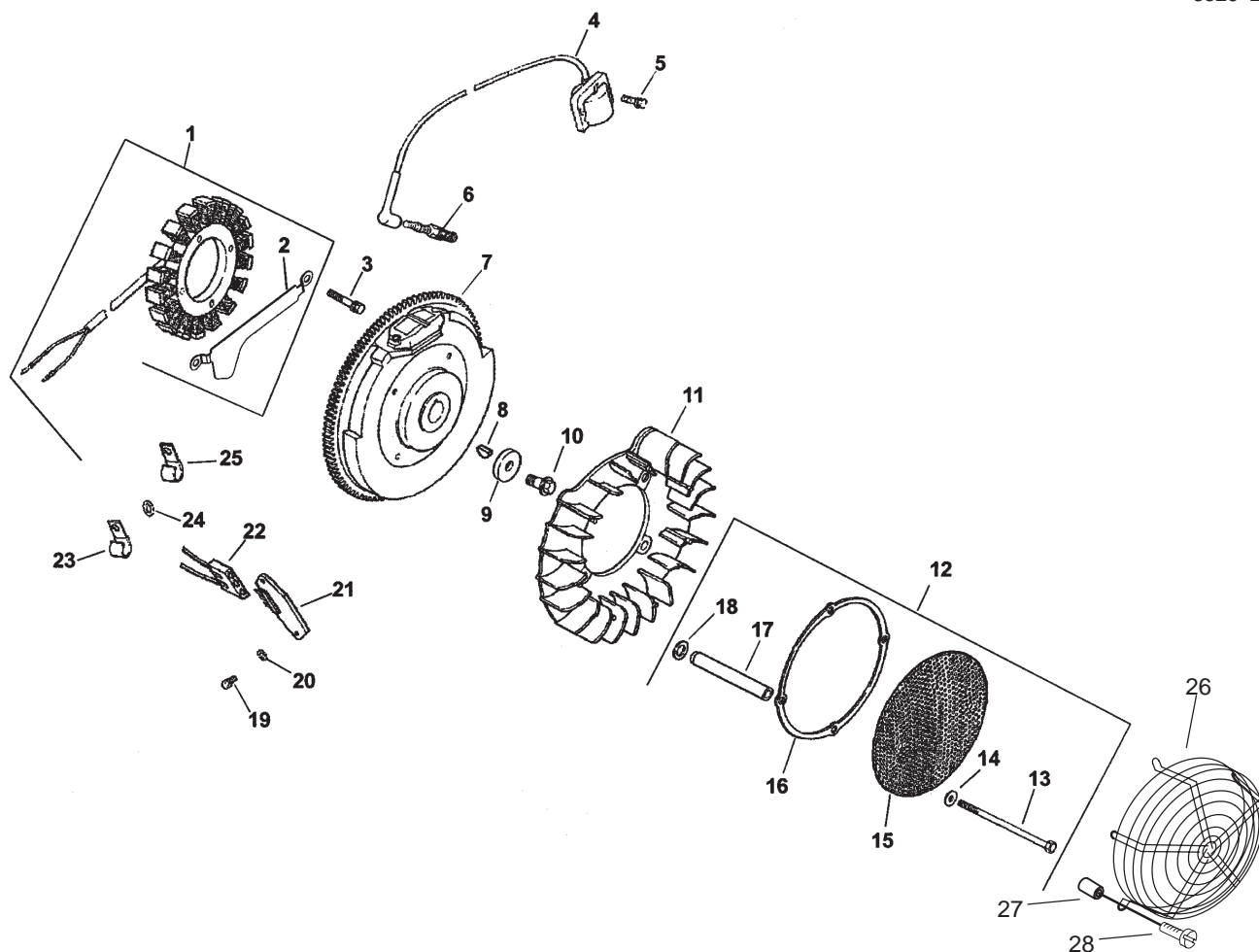
Ref. No.	Part No.	Qty.	Description	Ref. No.	Part No.	Qty.	Description
1	24 009 96-S	1	Kit-Plate, Closure (Incl. Ref.# 2-13, 20, 21)	18	52 155 02-S	2	Connector
2	24 755 121-S	1	Kit-Dipstick and Tube (Incl. Ref. # 3)	19	24 326 19-S	2	Hose-Oil
3	24 038 10-S	1	Dipstick	20	24 294 09-S	1	Fitting
4	24 043 12-S	1	Kit-governor gear w/ pin (Incl. Ref. # 5)	21	24 294 08-S	1	Fitting
5	12 380 01-S	1	Pin-Regulating, Governor	22	25 155 02-S	1	Connector
6	52 488 02-S	1	Tab-Locking	23	24 099 03-S	1	Switch-Pressure, Oil
7	12 144 02-S	1	Shaft-Gear, Governor	24	24 086 16-S	9	Screw-HF
8	52 032 08-S	1	Seal-Oil (PTO end)	25	24 086 17-S	1	Screw-HF
9	25 139 60-S	1	Plug-Pipe, Allen Head				
10	24 153 08-S	1	O-Ring				
11	24 393 10-S	1	Oil Pump ASM (Incl. Ref. # 12 & 13)				
12	24 153 01-S	1	O-Ring-Pick-Up, Oil				
13	24 381 04-S	1	Pick-up-Oil				
14	M-631005-S	2	Washer-Plain				
15	M-645025-S	2	Screw-HF				
16	52 050 02-S	1	Filter-Oil				
17	25 029 01-S	1	Adapter-Oil Filter, Remote				



## Head/Valve/Breather Assembly Kohler Engine CH20S PS-64650

Ref. No.	Part No.	Qty.	Description
1	24 755 74-S	1	Kit-Valve Cover, Plain (Incl. Ref. # 2 & 3)
2	24 086 32-S	4	Screw-Shoulder
3	24 153 16-S	1	O-Ring-Cover, Valve
4	12 755 03-S	4	Kit-Retainer
5	12 173 01-S	4	Cap-Spring, Valve
6	24 089 02-S	4	Spring-Valve
7	235011-S	4	Retainer-Spring
8	24 032 05-S	2	Seal-Stem, Valve
9	24 318 68-S	1	#1 Cylinder Head ASM
10	24 017 01-S	2	Valve-Intake (STD)
10	24 017 02-S	2	Valve-Intake (.25)
11	24 016 01-S	2	Valve-Exhaust (STD)
11	24 016 02-S	2	Valve-Exhaust (.25)
12	24 755 66-S	1	Kit-Train, Valve (Incl. Ref. #14, 17, 18)
13	25 351 01-S	4	Lifter-Valve
14	24 411 05-S	4	Rod-Push
15	24 041 08-S	2	Gasket-Head, Cylinder
16	24 318 71-S	1	#2 Cylinder Head ASM
17	25 186 01-S	4	Arm-Rocker
18	24 599 01-S	4	Pivot-Arm, Rocker
19	M-640034-S	4	Screw-HF
20	24 072 09-S	8	Stud-Head, Cylinder

Ref. No.	Part No.	Qty.	Description
21	24 468 16-S	8	Washer-Flat
22	24 100 10-S	8	Nut-HF
23	24 755 75-S	1	Kit-Oil Fill, Valve Cover (Incl. Ref. #2, 3, & 24)
24	24 153 09-S	1	O-Ring
25	24 755 46-S	1	Kit-Cap, Oil Fill (Incl. Ref. # 26)
26	12 153 03-S	1	O-Ring-Cap, Oil Fill
27	24 445 01-S	1	Strap-Lifting
28	24 402 03-S	1	Reed-Breather
29	12 018 01-S	1	Retainer-Reed, Breather
30	M-545010-S	1	Screw-HF
31	24 050 01-S	1	Filter-Breather
32	24 033 01-S	1	Kit-Breather (Incl. Ref. # 33-35)
33	24 041 23-S	1	Gasket-Breather
34	24 096 58	1	Cover-Breather
35	25 139 60-S	1	Plug-Pipe, Allen Head
36	M-645020-S	4	Screw-HF
37	X-426-9-S	1	Clamp-Breather
38	24 326 26-S	1	Hose-Breather

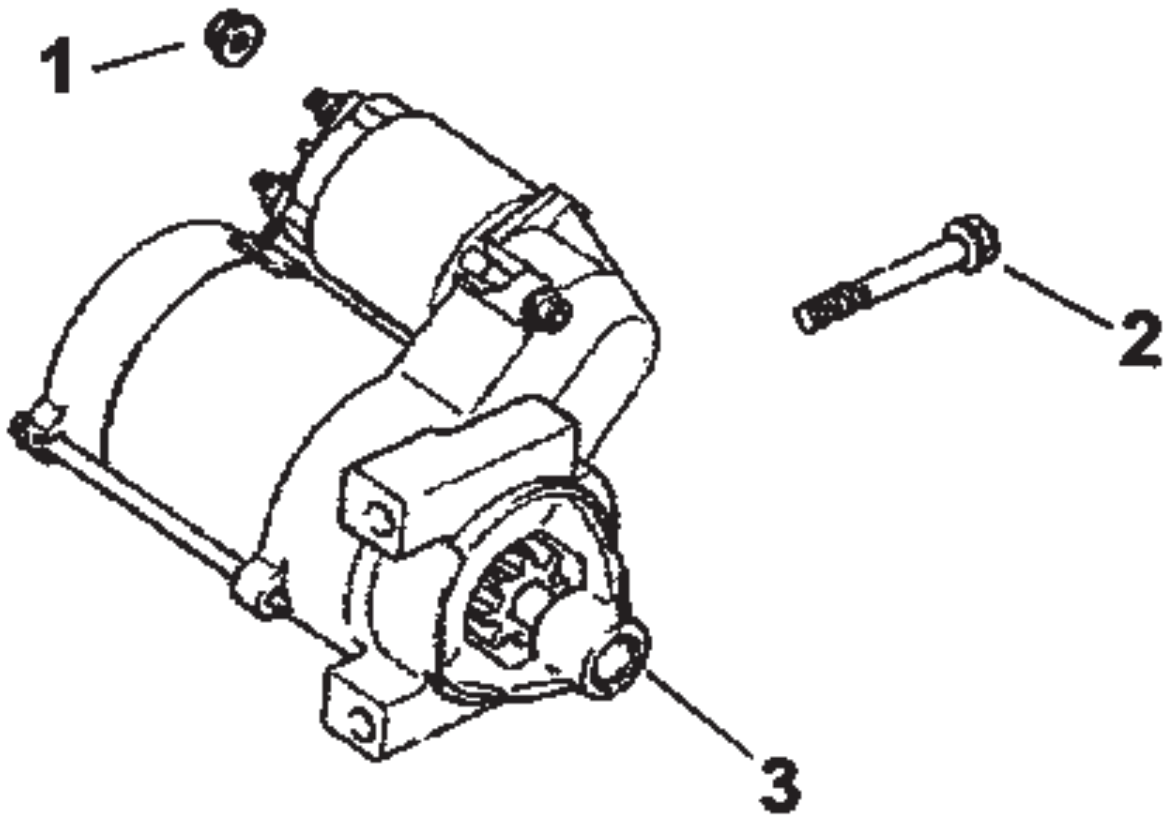


## Ignition/Electrical Assembly Kohler Engine CH20S PS-64650

Ref. No.	Part No.	Qty.	Description	Ref. No.	Part No.	Qty.	Description
1	54 755 09-S	1	Kit-Stator, 15 amp (Incl. Ref. # 2)	22	236602-S	1	Connector
2	24 126 71-S	1	Bracket-Wire, Stator	23	235173-S	1	Clip-Cable
3	M-548025-S	2	Screw-Cap, Hex	24	X-25-63-S	1	Washer-Plain
4	24 584 01-S	2	Module-Ignition	25	48 154 02-S	1	Clip-Cable
5	M-545020-S	4	Screw-HF	26	24 314 12-S	1	Guard-Wire
6	12 132 06-S	2	Plug-Spark	27	24 112 09	3	Spacer
7	24 025 01-S	1	Flywheel	28	24 086 39	3	Screw
8	X-42-15-S	1	Key	*	24 518 12-S	1	Lead-Black (5" - 12 gauge - insulated grip barrel eyelet terminals)
9	12 468 03-S	1	Washer-Plain	*	24 176 40-S	1	Harness-Wiring
10	12 086 14-S	1	Screw-HF	*	25 454 03-S	2	Tie-Cable
11	24 157 03-S	2	Fan	*	25 086 43-S	1	Screw-Set
12	24 755 79-S	1	Kit-Screen, Chopper (Incl. Ref. # 13-18)	*	X-22-11-S	1	Washer-Lock
13	M-603100-S	4	Screw-HH				
14	X-25-53-S	4	Washer-Plain				
15	24 162 25-S	1	Screen-Grass				
16	24 141 06-S	1	Ring-Support				
17	24 112 14-S	4	Spacer				
18	24 468 11-S	4	Washer-Spring				
19	24 086 18-S	2	Screw-Head, Phillips				
20	X-25-92-S	2	Washer-Plain				
21	25 403 03-S	1	Rectifier-Regulator (15 amp)				

\* Not illustrated



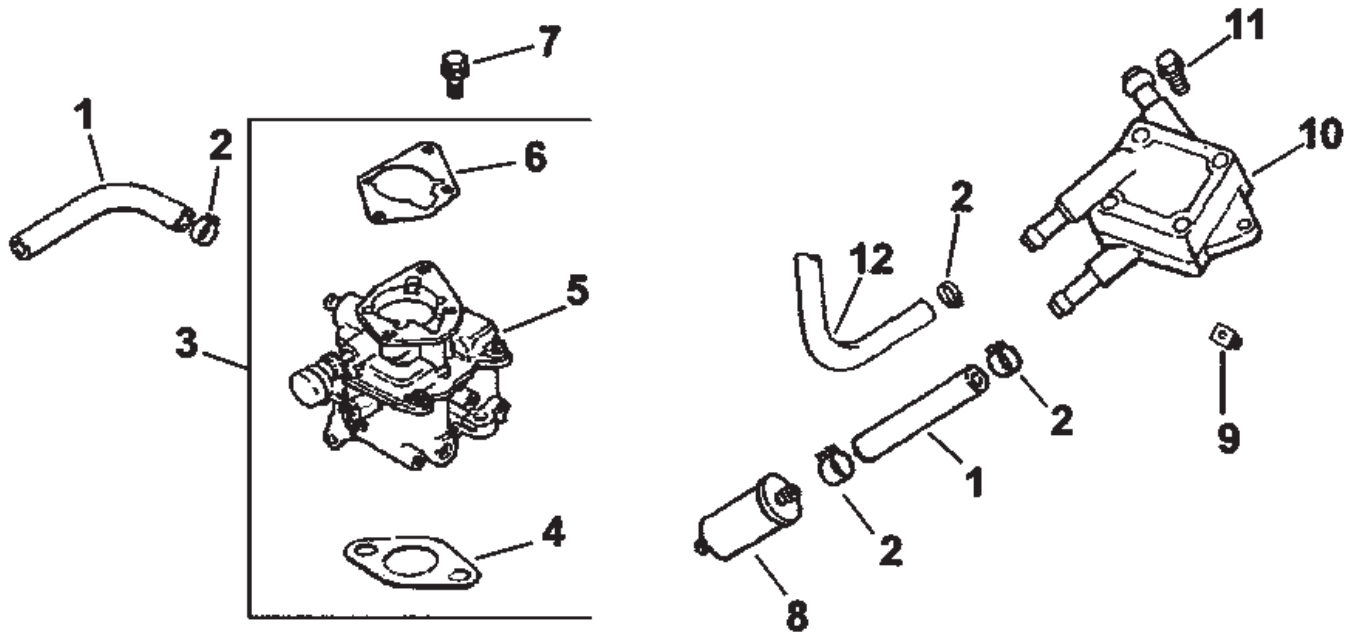


### Starting System Assembly Kohler Engine CH20S PS-64650

Ref. No.	Part No.	Qty.	Description
1	M-841080-S	1	Nut-HF
2	M-839080-S	2	Screw-HF
3	25 098 08-S	1	Solenoid Shift Starter ASM (service w/ kits listed below)
*	25 755 33-S	1	Kit-Drive, Pinion (Includes Ring: 25 141 01-S)
*	25 221 01-S	1	Kit-Brush
*	25 435 04-S	1	Kit-Solenoid

Ref. No.	Part No.	Qty.	Description

\* Not illustrated



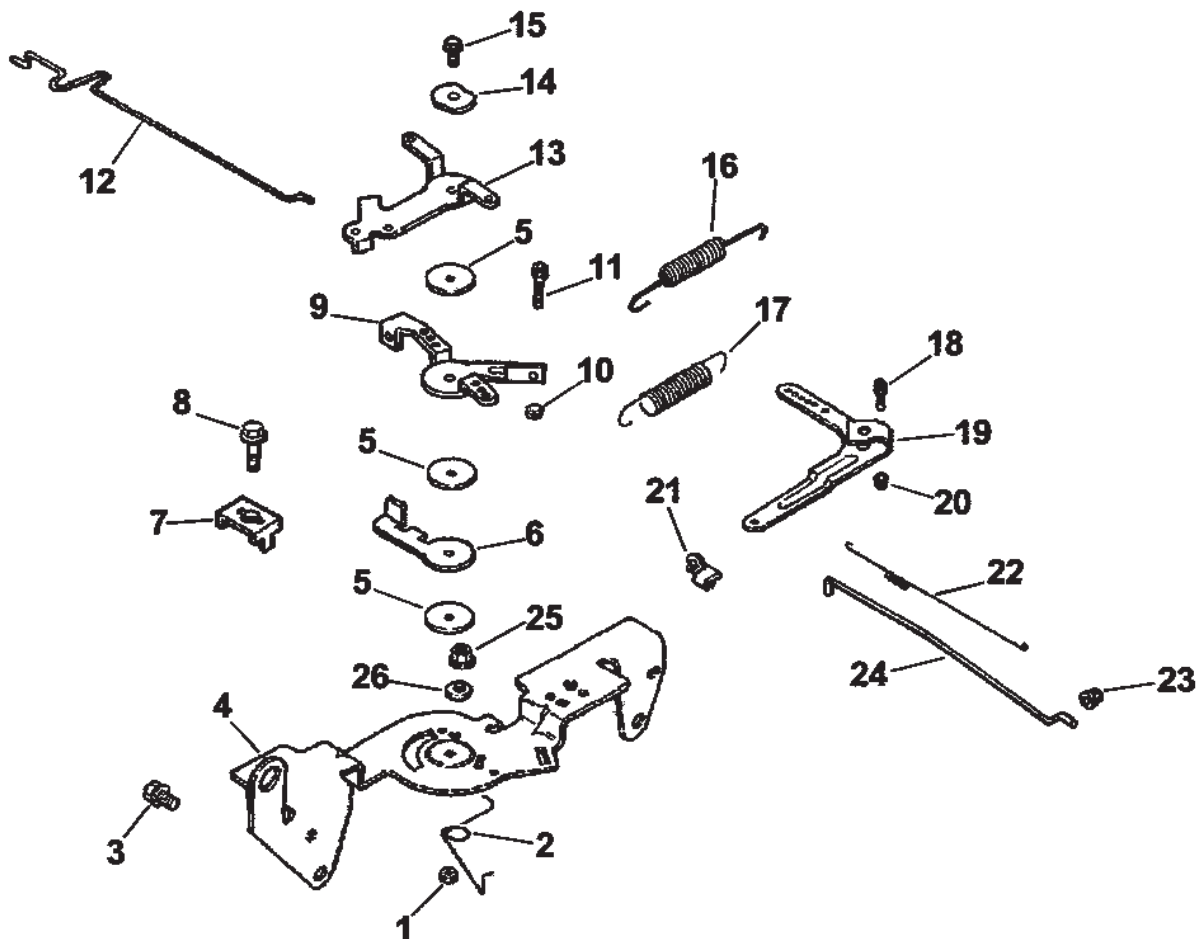
## Fuel System Assembly Kohler Engine CH20S PS-64650

Ref. No.	Part No.	Qty.	Description
1	25 353 32-S	2	Line-Fuel
2	25 237 14-S	6	Clamp-Hose
3	24 853 75-S	1	Kit-Carburetor w/ Gasket (Incl. Ref. # 4-6)
4	24 041 06-S	1	Gasket-Base, Air Cleaner
☆5		1	Carburetor ASM
6	24 041 17-S	1	Gasket-Carburetor
7	M-651030-S	2	Screw-HF
8	24 050 02-S	1	Filter-Fuel
9	24 100 01-S	2	Nut-Plastic
10	24 393 16-S	1	Pump-Fuel-Pulse
11	24 086 12-S	2	Screw-Cap, Hex
12	24 353 02-S	1	Line-Fuel
*	24 757 01-S	1	Kit-Solenoid (Includes: solenoid seat 24 521 01-S, O-Ring 24 153 04-S, O-Ring 24 153 05-S, O-Ring 24 153 06-S, solenoid screw 24 086 07-S, and solenoid 24 435 01-S)

Ref. No.	Part No.	Qty.	Description
*	24 757 02-S	1	Kit-Float
*	24 757 03-S	1	Kit-Repair, Carburetor (Includes: inlet needle valve clip 24 154 01-S, inlet needle valve 24 462 01-S, carburetor body screw 24 086 09-S, carburetor body gasket 24 041 09-S, slow jet o-ring 24 153 02-S, o-ring 24 153 04-S, o-ring 24 153 05-S, o-ring 24 153 16-S, idle needle 24 368 01-S, and idle needle spring 24 089 11-S)

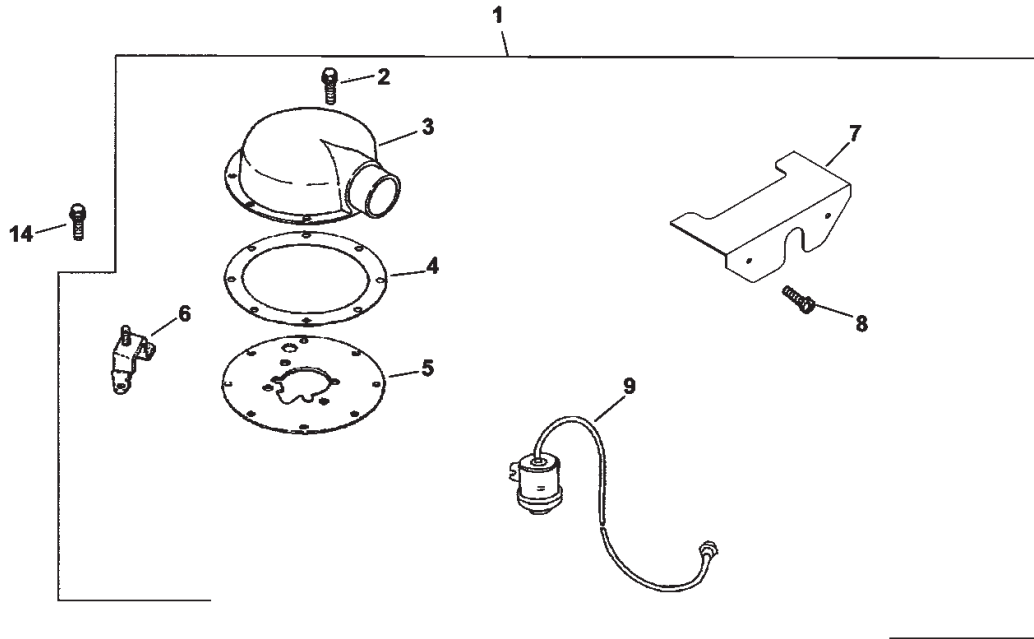
\* Not illustrated

☆ Not serviced



## Engine Control Assembly Kohler Engine CH20S PS-64650

Ref. No.	Part No.	Qty.	Description	Ref. No.	Part No.	Qty.	Description
1	M-547050-S	1	Nut-Hex	23	25 158 08-S	1	Busing-Linkage, Throttle
2	24 089 03-S	1	Spring-Return, Choke	24	24 079 01-S	1	Linkage-Throttle
3	M-645016-S	4	Screw-HF	25	M-541050-S	1	Nut-HF
4	24 126 56-S	1	Bracket-Control	26	X-20-1-S	1	Washer-Lock
5	24 468 01-S	3	Washer-Plain				
6	24 090 07-S	1	Lever-Actuator, Throttle				
7	12 237 01-S	2	Clamp-Cable				
8	M-545016-S	3	Screw-HF				
9	24 090 03-S	1	Lever-Control, Throttle				
10	M-446030-S	1	Nut-HF				
11	M-401030-S	1	Screw-HF				
12	24 079 02-S	1	Linkage-Choke				
13	24 090 05-S	1	Lever-Choke				
14	41 468 03-S	1	Washer-Spring				
15	M-545020-S	1	Screw-HF				
16	24 089 51-S	1	Spring-Limiter, Throttle				
17	24 089 45-S	1	Spring-Governor				
18	24 211 03-S	1	Bolt				
19	24 090 33-S	1	Lever-Governor				
20	M-641060-S	1	Nut-HF				
21	25 158 11-S	1	Bushing-Retaining, Linkage				
22	24 089 01-S	1	Spring-Linkage				

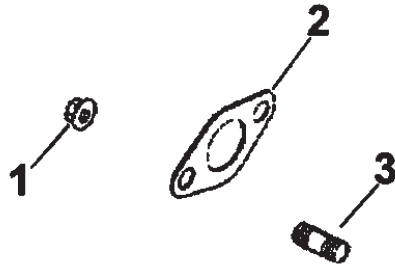


## Air Intake/Filtration Assembly Kohler Engine CH20S PS-64650

Ref. No.	Part No.	Qty.	Description
1	24 743 28-S	1	Kit-Air Cleaner, Heavy Duty (Incl. Ref. # 2-9, Decal 24 113 95-S, and Carburetor Kit 24 853 75-S)
2	M-645016-S	7	Screw-HF
3	24 029 28-S	1	Adapter-Intake, Air
4	24 041 38-S	1	Gasket-Adapter, Air Cleaner
5	24 029 35-S	1	Plate-Adapter
6	24 126 21-S	1	Bracket-Base, Air Cleaner
7	24 314 25-S	1	Shield-Debris
8	24 086 06-S	2	Screw-Head, Phillips
9	25 755 24-S	1	Kit-Gauge, Air Filter
10	M-651055-S	4	Screw-HF
11	24 164 14-S	1	Manifold-Intake
12	24 041 01-S	2	Gasket-Manifold, Intake
13	24 041 06-S	1	Gasket-Base, Air Cleaner
14	M-639016-S	3	Screw-HF
*	24 853 75-S	1	Kit-Carburetor w/ Gaskets

Ref. No.	Part No.	Qty.	Description
*	24 113 95-S	1	Decal-HP
*	25 113 27-S	1	Decal-Cleaner, Air

\* Not illustrated



## Exhaust Assembly Kohler Engine CH20S PS-64650

Ref. No.	Part No.	Qty.	Description
1	M-841080-S	4	Nut-Mounting, Muffler
2	24 041 02-S	2	Gasket-Exhaust
3	25 072 04-S	4	Stud
*	24 782 15	1	Miniblock
*	24 755 107-S	1	Set-Gasket

Ref. No.	Part No.	Qty.	Description

\* Not illustrated

