



Z355

Z-Master with 48" Mower and Bagger

Model No. 74805—21000001 and Up

Parts Catalog

Ordering Replacement Parts

To order replacement parts, please supply: the part number, the quantity, and the description of each part desired.

Understanding Reference Numbers

Each identified part in an illustration has a reference number. The reference number for a part also appears in the parts list, along with other information about the part.

This catalog uses two special reference number formats, one to indicate parts in a service assembly and another to indicate the quantity of a given part in an illustration.

Service Assembly Reference Numbers

Parts in service assemblies have reference numbers in the form **a:b**. The **a** represents the reference number of the entire service assembly and the **b** represents a sequential number unique to each part within the service assembly.

For example, a wheel assembly might be identified by reference number **6**, the tire by **6:1**, the valve by **6:2**, and the wheel by **6:3**. When you order the assembly identified by reference number **6**, you receive all parts identified by reference numbers **6:1**, **6:2**, and **6:3**. However, you may also order any part individually.

Reference numbers of this type appear in illustrations and in part lists.

Reference Numbers Indicating Quantity

In an illustration, if a reference number indicates more than one part, the reference number has the form **nX y**. The **n** represents the quantity of the part, the **X** is the multiplication symbol, and the **y** represents the reference number.

For example, in an illustration, the reference number **2X 37** means that two of the parts identified by reference number **37** are indicated.

Contents

Description	Page	Description	Page
Traction Frame Assembly	3	Air Cleaner and Bagger Frame Assembly	22
Tail Wheel and Bumper Assembly	4	Bagger Assembly	23
Engine Installation and Fuel Assembly	5	Electrical Schematic	24
Hydraulic #1 Assembly	6	Hydraulic Schematic	25
Hydraulic #2 Assembly	7	Gearbox Kit Assembly No. 104–2446	26
Electrical #1 Assembly	8	Gearbox Assembly	27
Electrical #2 Assembly	9	Crankshaft Assembly	29
Parking Brake Assembly	10	Crankcase Assembly	30
Steering Control Assembly	11	Oil Pan/Lubrication Assembly	31
Seat Assembly	12	Head/Valve/Breather Assembly	32
Exhaust Assembly	13	Ignition/Electrical Assembly	33
PTO / Hydro Drive Assembly	14	Blower Housing and Baffle Assembly	34
PTO / Gearbox Assembly	15	Starting System Assembly	35
Drive Shaft Assembly No. 94–4722	16	Fuel System Assembly	36
Carrier Frame Assembly	17	Engine Control Assembly	37
Deck Assembly	19	Air Intake/Filtration Assembly	38
Plenum Assembly	20	Exhaust Assembly	39
Blower Assembly	21		

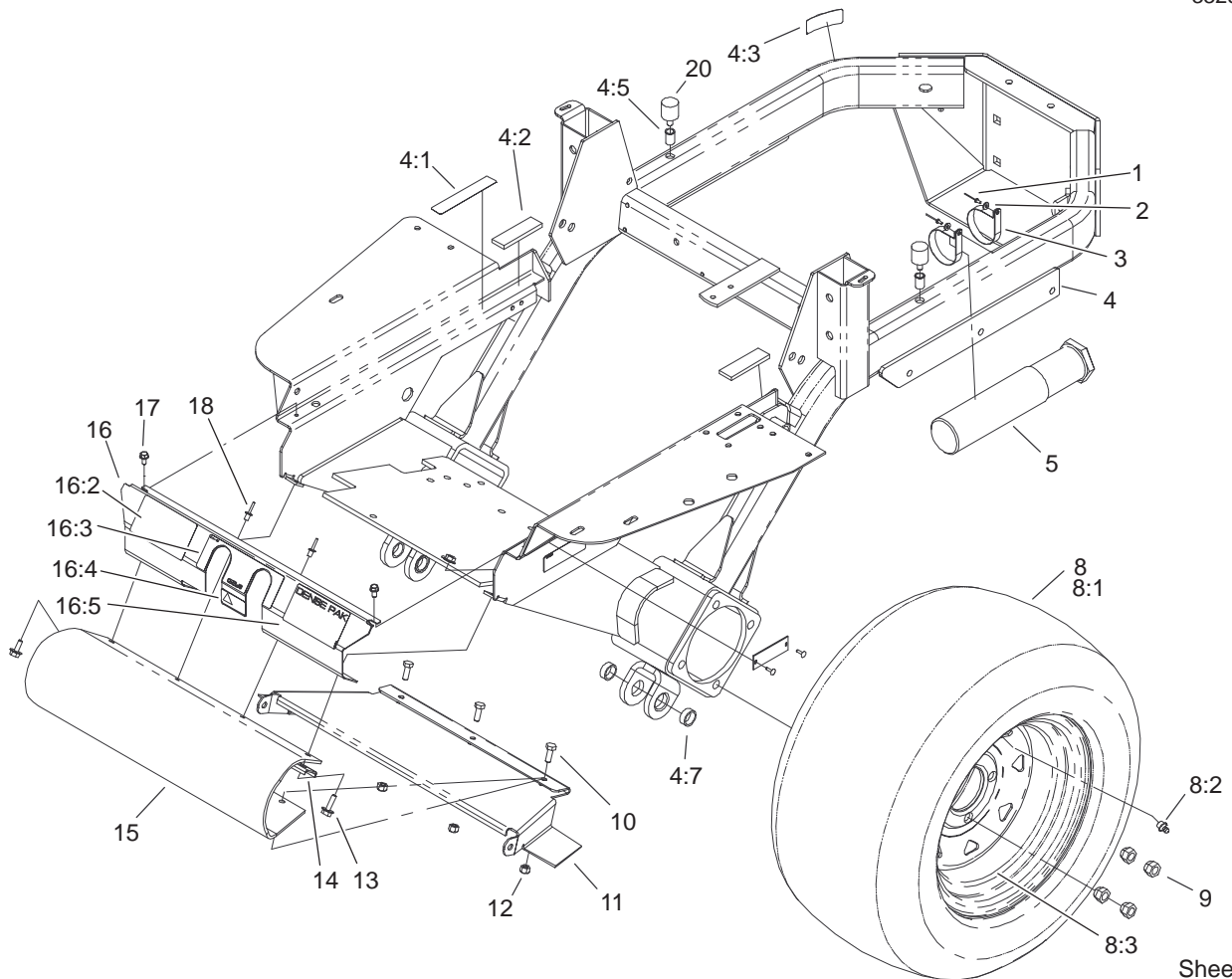
Accessories

Description	Model / Part No.	Description	Model / Part No.
LH Low Sail Blade	100–2354	Bagger Wear Plate	100–4552
RH Low Sail Blade	100–2353	Armrest Kit	30707
Fuel Gauge Kit	98–1325	60" Side Discharge Deck	78478

Part Description Abbreviations

Part descriptions in this catalog may include the following abbreviations.

Abbreviation	Meaning	Abbreviation	Meaning
AR	as required	HYD	hydraulic
ASM	assembly	INC	incorporated
CARR	carriage	LH	left hand
DEG	degrees	NI	nylon insert
FH	flat head	PPH	Phillips pan head
GA	gauge	PTH	Phillips truss head
HF	hex flange	PTO	power take off
HH	hex head	RH	right hand
HHF	hex head flange	SFH	slotted fillister head
HLH	hex lag head	SHH	slotted hex head
HJ	hex jam	SQH	square head
HOC	height-of-cut	SHWH	slotted hex washer head
HS	hex socket	SPH	slotted pan head
HSBH	hex socket button head	SRH	slotted round head
HSFH	hex socket flat head	STD	standard
HSH	hex socket head	TAP	self tapping
HWH	hex washer head	TTH	Torx truss head
HWHTF	hex washer head thread forming	WH	wing head

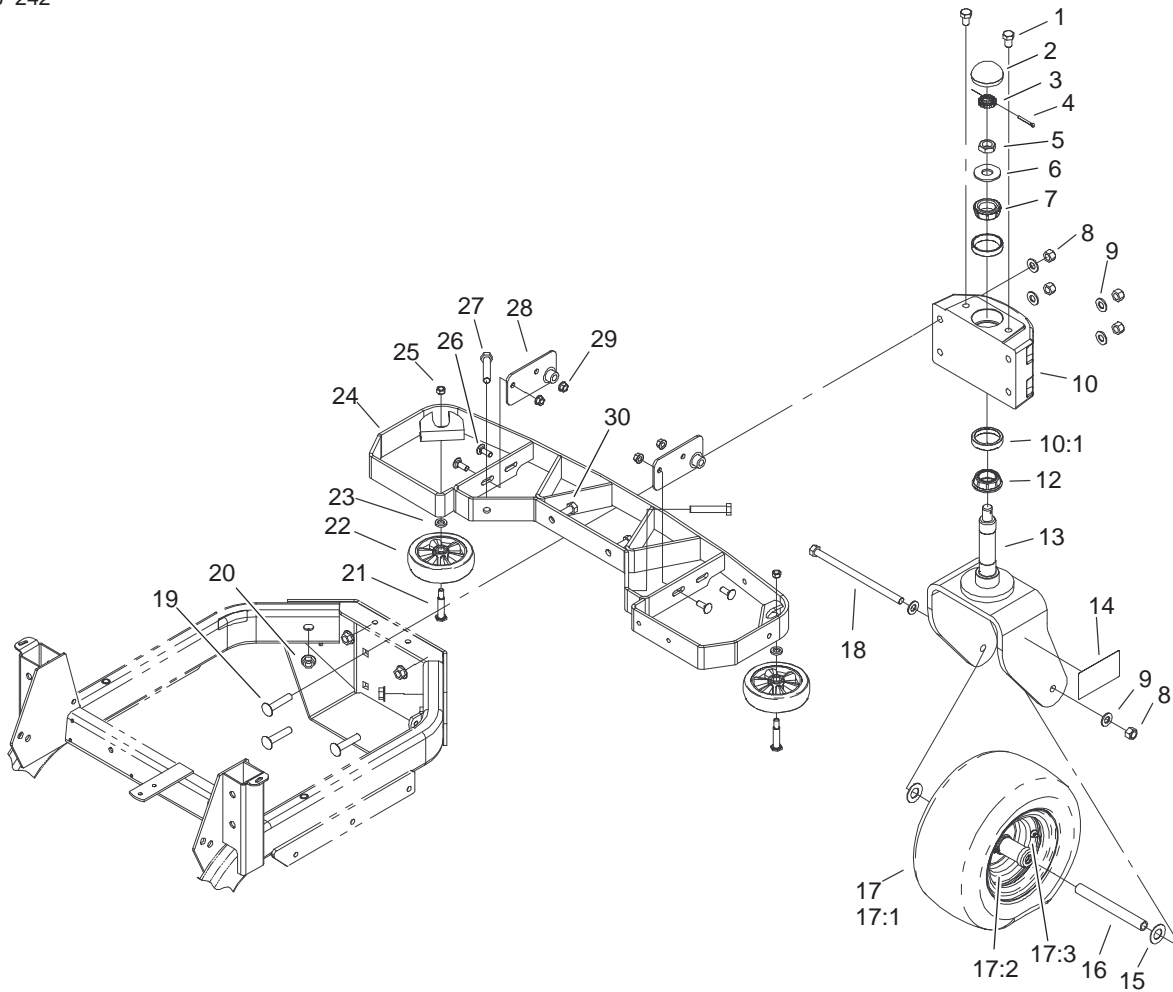


Sheet No.:2

Traction Frame Assembly

Ref. No.	Part No.	Qty.	Description
1	3269-8	2	Rivet
2	3256-21	2	Washer-Flat
3	2412-120	2	R-Clamp
4	104-7780	1	Frame ASM
4:1	98-4361	1	Decal - Warning
4:2	52-5260	2	Pad-Rubber
4:3	93-9198	1	Decal - Hot Surface
4:5	32148-8	2	Insert-Threaded
4:7	100-2442	4	Bushing
5	74-0720	1	Tube-Manual
8	94-9381	2	Tire And Wheel ASM
8:1	94-9388	1	Tire
8:2	232-27	1	Stem-Valve
8:3	94-9385	1	Wheel
9	242-50	8	Nut-Lug
10	322-4	3	Screw-HH
11	100-9614-01	1	Cover - Driveshaft
12	3296-29	3	Nut-Lock
13	32144-44	2	Screw-HWH
14	100-9620-03	1	Bracket - Guard
15	100-9619	1	Guard - Footrest
16	104-2401	1	Cover Plate ASM
16:2	100-7790	1	Decal - Z355
16:3	98-1313	1	Decal - Operation
16:4	98-4387	1	Decal-Protection, Ear
16:5	104-5106	1	Decal-Pak, Dense

Ref. No.	Part No.	Qty.	Description
17	32144-4	2	Screw-HWH
18	3290-412	2	Rivet
20	104-2442	2	Bumper - Rubber

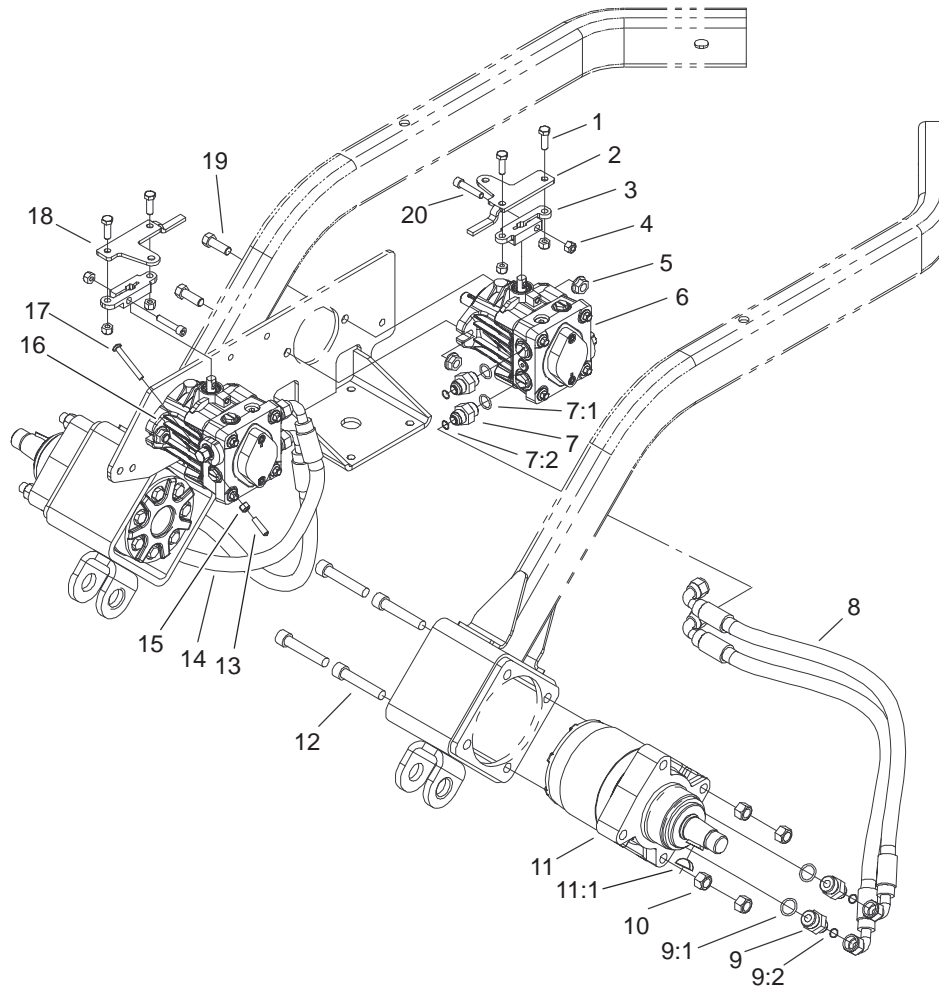


Tail Wheel and Bumper Assembly

Ref. No.	Part No.	Qty.	Description
1	325-2	2	Screw-HH
2	94-4665	1	Dustcap
3	93-0307	1	Nut-Retainer, Lock
4	3272-17	1	Pin-Cotter
5	3220-7	1	Nut-Jam
6	3256-8	1	Washer-Flat
7	254-62	1	Bearing-Roller, Cone
8	3296-23	5	Nut-Lock, NI
9	3256-26	6	Washer-Flat
10	105-1609	1	Spindle Housing ASM
10:1	254-61	2	Bearing-Cup
12	254-70	1	Bearing-Cone
13	94-4647-01	1	Caster Fork ASM
14	100-7790	1	Decal - Z355
15	3256-39	2	Washer-Flat
16	94-4753	1	Tube-Spacer, Castor
17	98-4352	1	Tire And Wheel ASM
17:1	94-9384	1	Tire
17:2	98-4351	1	Wheel ASM
*17:2:1	99-0246	4	Washer-Stop
*17:2:2	99-0247	2	Bearing-Roller
*17:2:3	99-0248	2	Seal-Felt
*17:2:4	99-0249	2	Cap-End
17:3	232-27	1	Stem-Valve
18	325-24	1	Screw-HH
19	3233-27	4	Screw-CARR

Ref. No.	Part No.	Qty.	Description
20	32128-23	4	Nut-HF
21	5188	2	Bolt-Shoulder
22	109375	2	Wheel ASM
23	9202424	2	Spacer
24	104-2434-03	1	Bumper ASM
25	32153-2	2	Nut-Lock
26	3231-2	4	Screw-CARR
27	325-11	2	Screw-HH
28	104-2430-03	2	Pivot ASM
29	32128-21	4	Nut-HF
30	325-5	2	Screw-HH

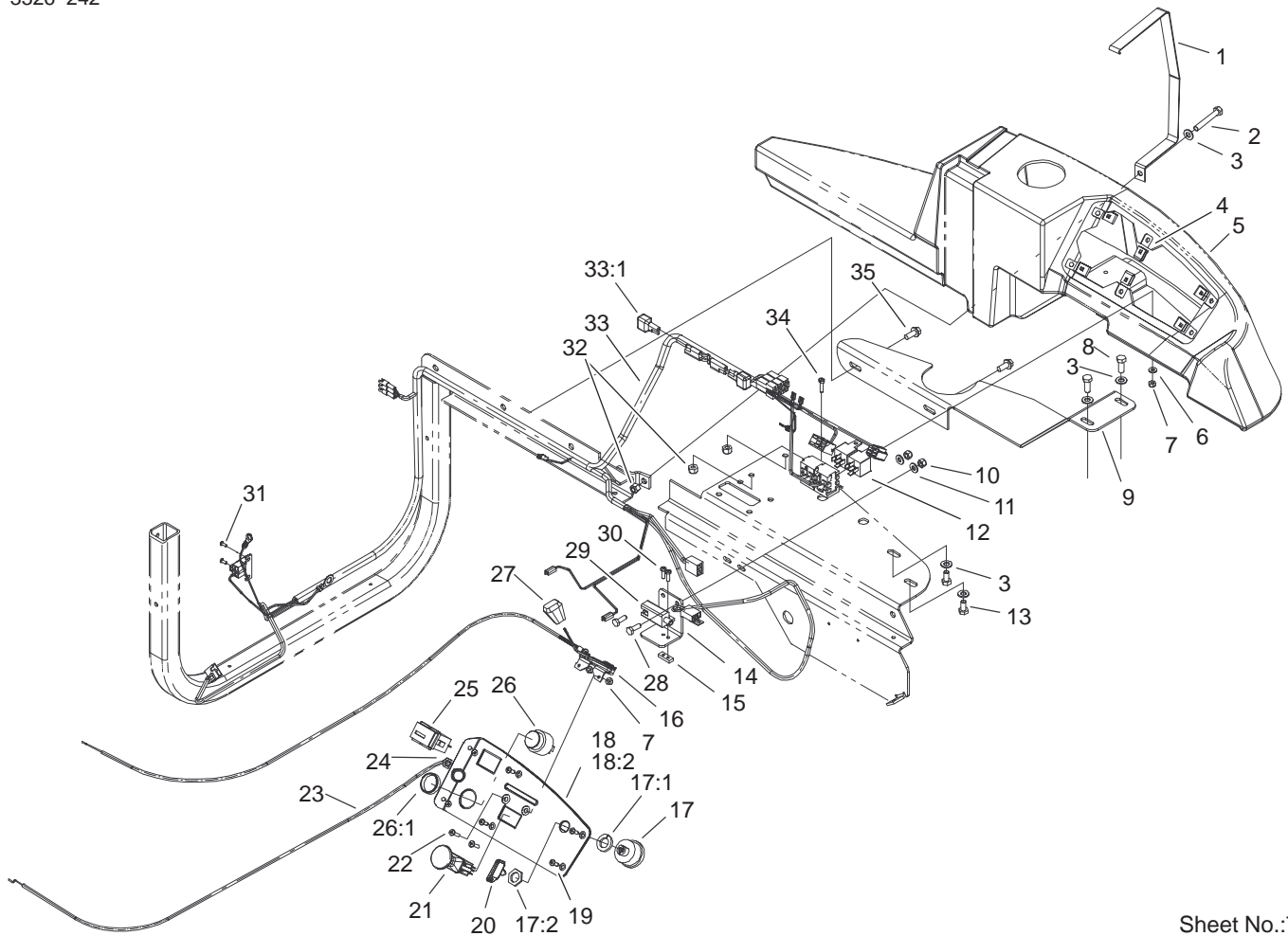
* Not illustrated



Sheet No.:6

Hydraulic #2 Assembly

Ref. No.	Part No.	Qty.	Description	Ref. No.	Part No.	Qty.	Description
1	322-5	4	Screw-HH				
2	94-4702-03	1	Plate - Control, Left				
3	94-4678	2	Arm-Control, Pump				
4	3296-29	6	Nut-Lock				
5	32128-42	4	Nut-HF				
6	104-7750	1	Pump-HYD, 10cc				
7	1-603990	4	Fitting-Straight				
7:1	237-79	1	O-Ring				
7:2	1-603992	1	O-Ring				
8	104-7845	2	HYD Hose ASM				
9	1-603991	4	Fitting-Straight				
9:1	1-603919	1	O-Ring				
9:2	1-603992	1	O-Ring				
10	3296-23	8	Nut-Lock, NI				
11	99-0206	2	Motor-Wheel, HYD				
11:1	3257-42	1	Key-Woodruff				
12	3274-93	8	Screw-HSH				
13	1-613073	2	Grip-Valve, Dump				
14	104-7846	2	HYD Hose ASM				
15	3296-42	2	Nut-Lock, NI				
16	104-7751	1	Pump-HYD, 10cc				
17	1-801063	2	Screw				
18	94-4701-03	1	Plate-Control, Right				
19	324-5	4	Screw-HH				
20	3274-83	2	Screw-HSH				

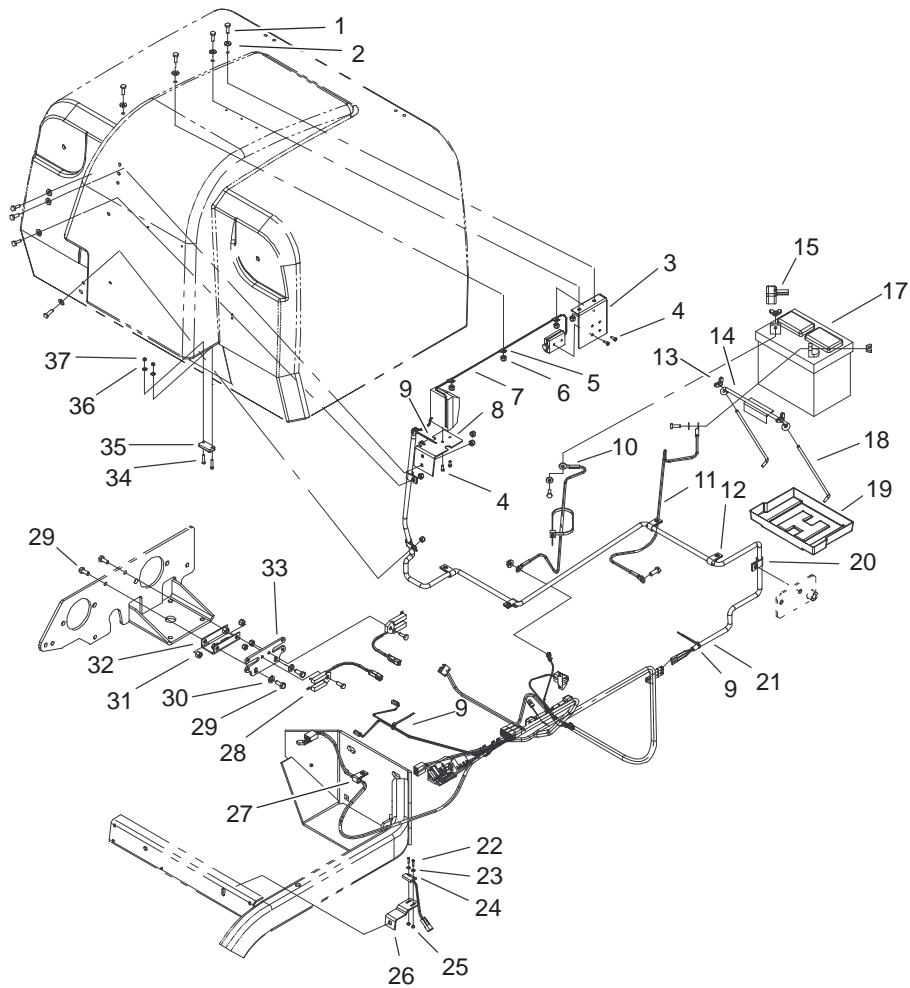


Sheet No.:7

Electrical #1 Assembly

Ref. No.	Part No.	Qty.	Description
1	94-9488-03	1	Strap – Console
2	322-11	1	Screw-HH
3	3256-23	5	Washer-Flat
4	95-1962	6	Clip – Tinnerman
5	104-0365	1	Console
6	3256-14	1	Washer-Flat
7	3296-2	3	Nut-Lock
8	322-4	2	Screw-HH
9	100-7792-01	1	Plate – Support, Console
10	3296-42	2	Nut-Lock, NI
11	3256-22	2	Washer-Flat
12	116397	2	Relay
13	322-2	2	Screw-HH
14	104-7773-01	1	Bracket-Switch
15	1-633181	1	Plate-Tapped
16	98-4350	1	Throttle Control ASM
17	88-9830	1	Switch-Ignition
17:1	3254-5	1	Washer-Lock, Internal
17:2	218-461	1	Nut-HH
18	104-7801	1	Instrument Panel ASM
18:2	104-7807	1	Decal – Instrument
19	32144-124	6	Screw-PPH
20	62-7770	2	Key-Ignition
21	1-633673	1	Switch-Delta
22	3250-13	2	Screw-PPH

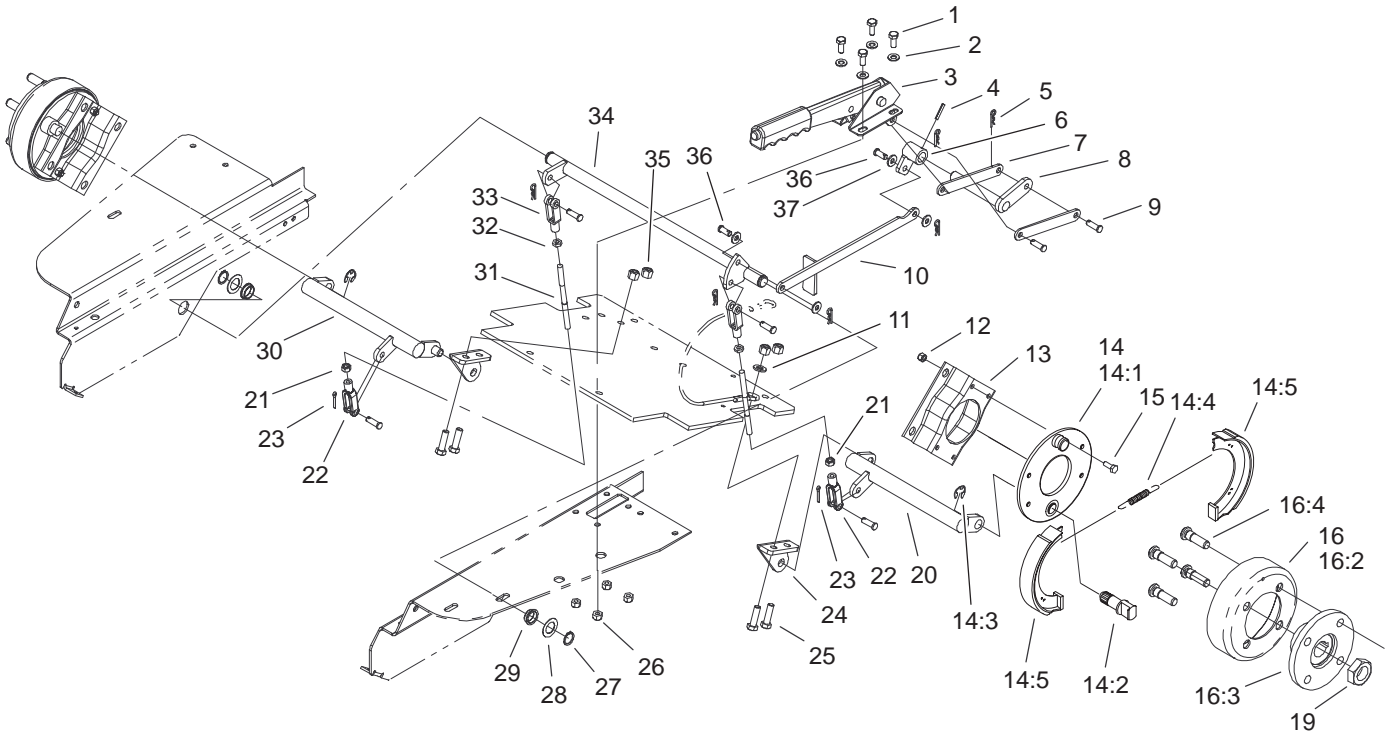
Ref. No.	Part No.	Qty.	Description
23	98-1956	1	Control – Choke
24	3220-3	1	Nut-Jam
25	94-4208	1	Hourmeter
26	80-9330	1	Alarm-Audio
26:1	104-5107	1	Nut-Plastic, Knurled
27	66-0120	1	Knob
28	321-4	2	Screw-HH
29	1-633111	1	Switch
30	3290-500	2	Screw-PPH
31	32144-74	2	Screw-TAP
32	3296-29	3	Nut-Lock
33	104-0394	1	Harness – Ofz, Main
33:1	100-4918	2	Diode
34	32105-13	1	Screw-SHH
35	32144-11	2	Screw-TAP



Sheet No.:8

Electrical #2 Assembly

Ref. No.	Part No.	Qty.	Description	Ref. No.	Part No.	Qty.	Description
1	321-4	12	Screw-HH	26	104-2443-03	1	Bracket - Switch
2	3256-22	12	Washer-Flat	27	2412-93	1	R-Clamp
3	100-2440-03	1	Bracket - Emitter	28	98-1324	2	Switch - Interrupter
4	3250-19	4	Screw-PPH	29	322-3	4	Screw-HH
5	2412-127	3	Clamp-R	30	3256-23	2	Washer-Flat
6	3296-42	11	Nut-Lock, NI	31	3296-29	4	Nut-Lock
7	98-2367	1	Module-Det, Obstruction	32	94-4797-03	1	Channel-Mount, Switch
8	98-3000-03	1	Bracket - Receiver	33	94-9460	1	Plate-Mount, Switch
9	3290-381	4	Tie - Cable	34	3290-124	2	Screw-HH
10	28-3893	1	Wire ASM	35	98-3006	1	Actuator
11	92-6287	1	Wire ASM (Negative)	36	3256-12	2	Washer-Flat
12	2412-93	6	R-Clamp	37	3296-9	2	Nut-Lock NI
13	32103-22	4	Nut-Wing				
14	113010	1	Holddown-Battery				
15	28-8080	1	Boot-Terminal				
17	94-1867	1	Battery				
18	94-6146	2	Retainer - Battery				
19	106948	1	Tray-Battery				
20	2412-138	1	R-Clamp				
21	98-3009	1	Conduit - Convolved				
22	32105-28	2	Screw-HH				
23	104-5112	2	Washer-Flat				
24	95-7669	1	Switch-Reed, Magnetic				
25	3296-52	2	Nut-Lock NI				

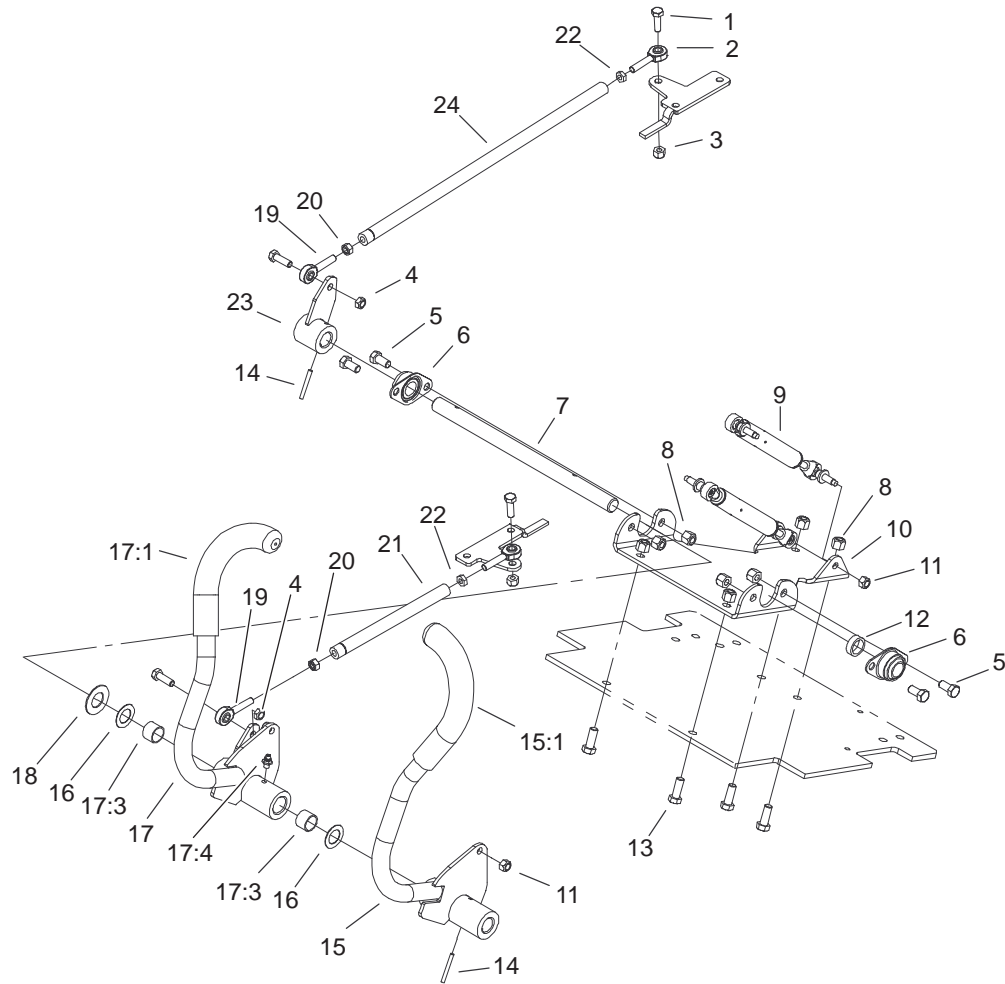


Sheet No.:9

Parking Brake Assembly

Ref. No.	Part No.	Qty.	Description
1	322-3	4	Screw-HH
2	3256-23	4	Washer-Flat
3	94-4602	1	Lever - Brake
4	32121-93	1	Pin-Spiral
5	3290-307	6	Pin-Hair
6	104-7771	1	Brake Hub ASM
7	98-1992	2	Link - Brake
8	98-1990	1	Transfer Shaft ASM
9	283-1	5	Pin-Yoke
10	104-7770	1	Connector Link ASM
11	3256-24	1	Washer-Flat
12	3296-42	8	Nut-Lock, NI
13	84-2000-03	2	Bracket-Brake
14	104-7705	2	Brake ASM
14:1	70-9870	1	Plate-Backing
14:2	104-7707	1	Cam Shaft-Brake
14:3	104-7706	1	E-Ring-Bowed
14:4	70-9880	2	Spring-Return
14:5	70-9840	2	Shoe-Brake
15	321-4	8	Screw-HH
16	10-6821	2	Brake Drum ASM
16:2	10-6850	1	Drum-Brake
16:3	10-6870-03	1	Hub-Wheel
16:4	85-6540	4	Stud-Drive
19	26-3790	2	Nut-Lock
20	98-1997	1	LH Brake Lever ASM

Ref. No.	Part No.	Qty.	Description
21	3220-20	2	Nut-Jam
22	98-4367	2	Clevis - Adjustable
23	3272-10	2	Pin-Cotter
24	94-9573-01	2	Mount-Lever, RH Brake
25	323-7	4	Screw-HH
26	3296-29	4	Nut-Lock
27	32120-72	2	Ring-Snap
28	9202574	2	Washer-Flat
29	106950	2	Bushing
30	98-1998	1	RH Brake Lever ASM
31	98-1996	2	Rod - Brake
32	3220-2	2	Nut
33	282-2	2	Yoke
34	98-1988	1	Torsion Shaft ASM
35	3296-39	4	Nut-Lock, NI
36	283-62	3	Pin-Clevis
37	3256-2	4	Washer-Flat

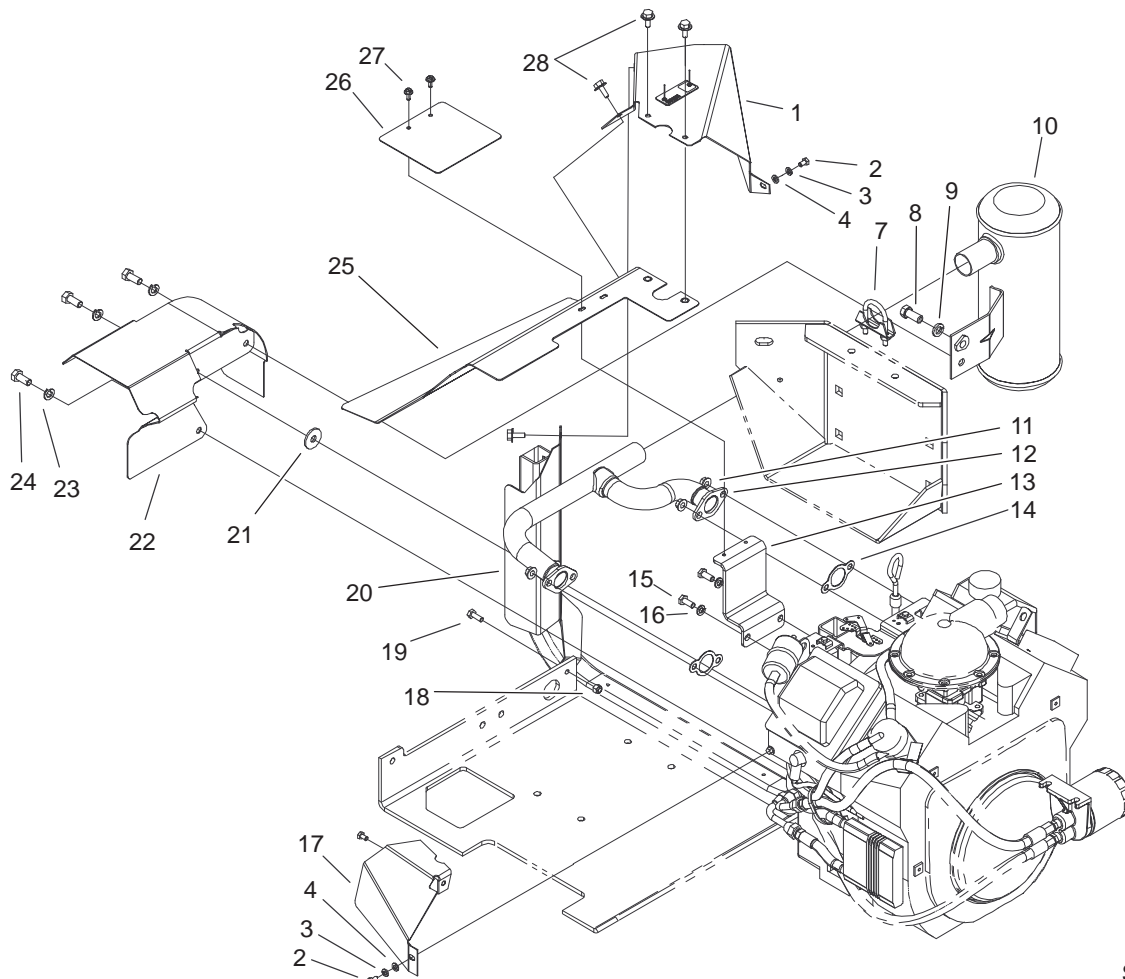


Sheet No.:10

Steering Control Assembly

Ref. No.	Part No.	Qty.	Description
1	322-5	4	Screw-HH
2	2411-52	2	Bearing-Rod End, RH
3	3296-29	2	Nut-Lock
4	3296-47	2	Nut-Lock, NI
5	323-4	4	Screw-HH
6	27-2320	2	Bearing
7	94-9515	1	Shaft - Control
8	3296-39	8	Nut-Lock, NI
9	104-5141	2	Damper-Bidirectional
10	104-5113-03	1	Channel-Mount, Control
11	33024-00	4	Nut-Lock
12	94-9524	1	Spacer - Control
13	323-6	4	Screw-HH
14	32121-103	2	Pin-Spring
15	104-7795	1	LH Control Handle ASM
15:1	94-9490	1	Grip - Cushion
16	9202574	2	Washer-Flat
17	104-5115	1	RH Control Handle ASM
17:1	94-9490	1	Grip - Cushion
17:3	256-76	2	Bushing
17:4	302-5	1	Fitting-Grease
18	3256-39	1	Washer-Flat
19	2411-53	2	Bearing-Rod End, LH

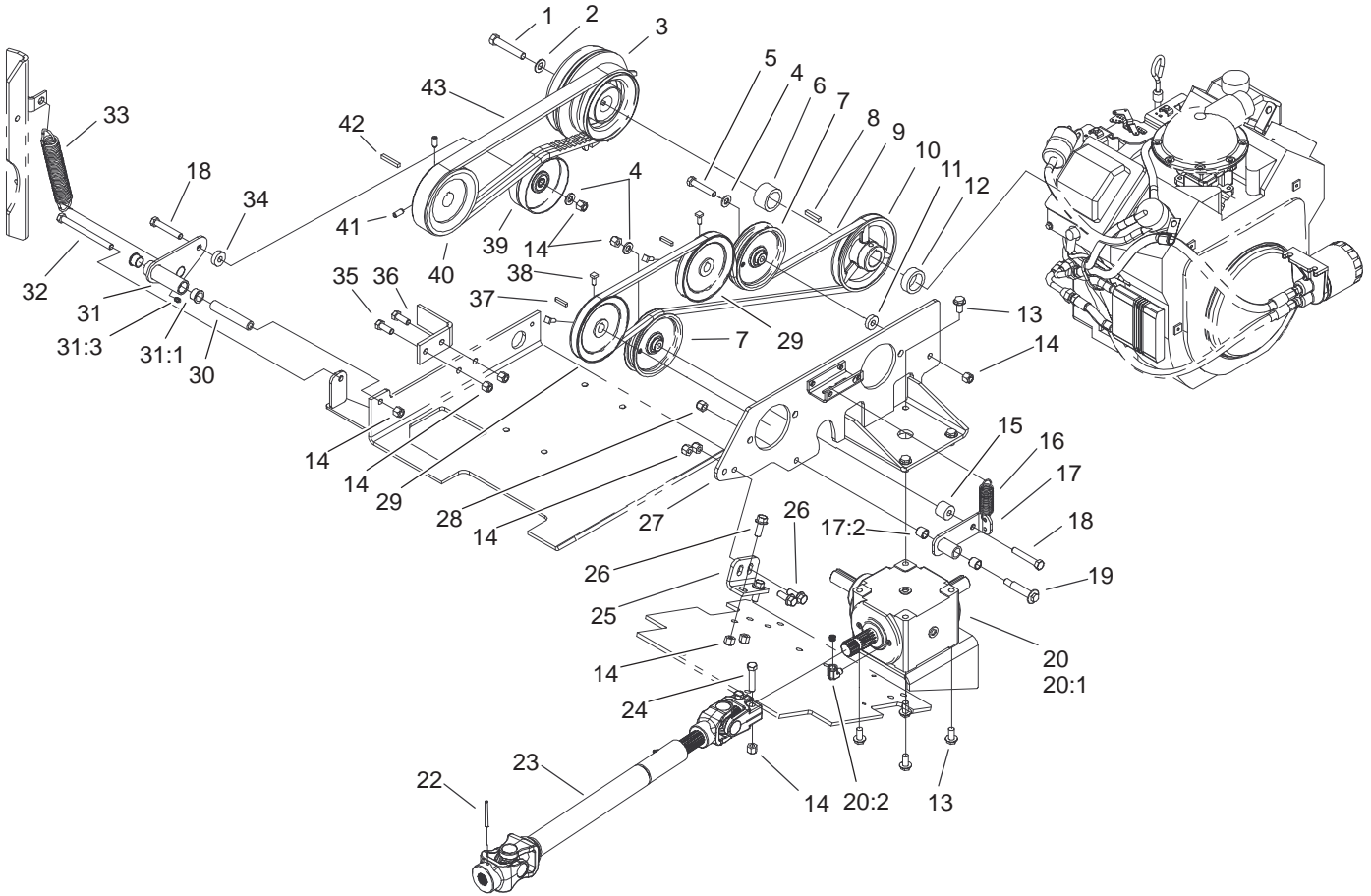
Ref. No.	Part No.	Qty.	Description
20	3220-20	2	Nut-Jam
21	94-4717	1	Rod-Control, RH
22	3220-2	2	Nut
23	94-9594-03	1	Control Hub ASM
24	94-4718	1	Rod-Control, LH



Sheet No.:12

Exhaust Assembly

Ref. No.	Part No.	Qty.	Description	Ref. No.	Part No.	Qty.	Description
1	98-1968	1	Rear Heat Baffle ASM	27	12-5450	2	Screw
2	42-9430	2	Bolt-Washer	28	3234-4	4	Screw-HHF
3	48-8020	2	Washer-Spring				
4	33093-00	2	Washer-Flat				
7	2112-11	1	Clamp-Muffler				
8	324-4	1	Screw-HH				
9	3253-6	1	Washer-Lock				
10	94-9495	1	Muffler				
11	92-6780	4	Nut-HF				
12	94-9494	1	Manifold				
13	94-9561	1	Bracket-Shield, Manifold				
14	93-0350	2	Gasket - Exhaust				
15	33114-020	2	Screw-HH				
16	3253-4	2	Washer-Lock				
17	98-1349	1	Baffle - Heat, Front				
18	3296-42	1	Nut-Lock, NI				
19	321-4	1	Screw-HH				
20	98-1329	1	Baffle - Heat, Middle				
21	2844	1	Washer				
22	98-1326	1	Baffle - Heat, Lower				
23	3253-5	3	Washer-Lock				
24	323-5	3	Screw-HH				
25	98-1967	1	Top Heat Baffle ASM				
26	98-1979	1	Panel-Access, Baffle				



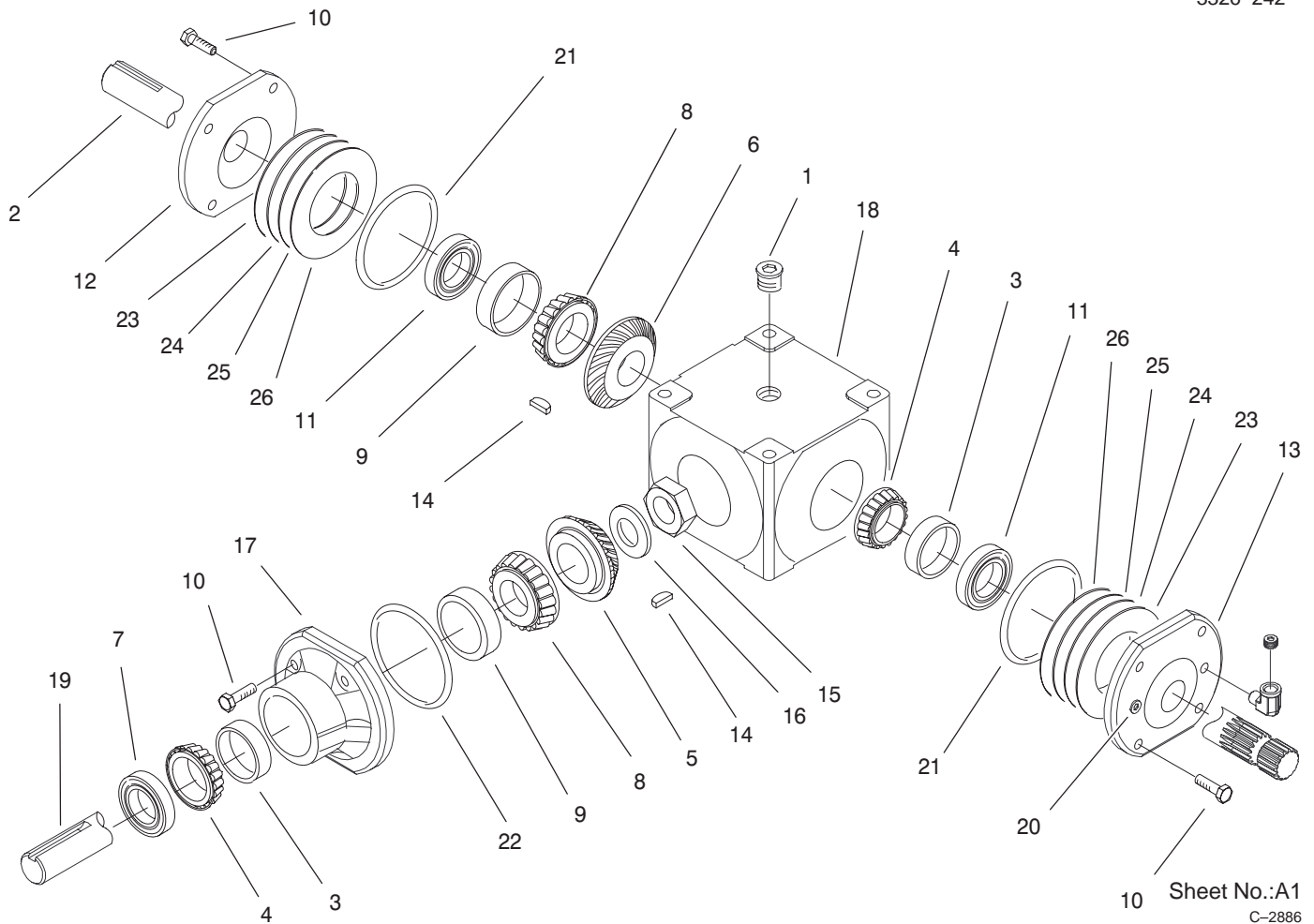
Sheet No.:13

PTO / Hydro Drive Assembly

Ref. No.	Part No.	Qty.	Description
1	3212-10	1	Screw-HH
2	3256-25	1	Washer-Flat
3	104-7756	1	Clutch-Magnetic, Electro
4	3256-24	3	Washer-Flat
5	323-10	1	Screw-HH
6	94-4689	1	Spacer- Shaft, Engine
7	93-1622	2	Pulley-Idler
8	13-2840	1	Key-Square
9	94-4607	1	V-Belt
10	94-4628	1	Pulley-Engine
11	9202204	1	Washer
12	94-4688	1	Spacer-Shaft, Engine
13	3234-1	8	Screw-HHF
14	3296-39	13	Nut-Lock, NI
15	94-4792	1	Spacer-Arm, Idler
16	94-9599	1	Spring - Extension
17	95-1950	1	Idler Arm ASM
17:2	256-154	2	Bushing
18	323-11	2	Screw-HH
19	27-6230	1	Bolt-Wheel
20	104-2433	1	Gearbox ASM
☆20:1		1	Gearbox - PTO
20:2	2811-7	1	Elbow
22	32121-48	1	Pin-Spring
23	94-4722	1	Shaft - Drive

Ref. No.	Part No.	Qty.	Description
24	323-19	2	Screw-HH
25	94-4787-03	1	Mount - Plate, Pump
26	3234-11	4	Screw-HHF
27	104-7785-03	1	Pump Mount ASM
28	3296-6	1	Nut-Lock, NI
29	80-8170	2	Pulley - Pump, Traction
30	100-5837	1	Spacer-Idler
31	100-5840	1	Idler Arm ASM
31:1	109859	2	Bushing
31:3	302-58	1	Fitting-Grease
32	323-23	1	Screw-HH
33	104-7794	1	Spring - Extension
34	94-4685	1	Spacer - Idler
35	323-6	2	Screw-HH
36	98-1301-03	1	Stop - Clutch
37	80-6090	2	Key - Pump
38	3241-5	4	Screw-Set
39	104-7791	1	Pulley-Flat
40	94-4629	1	Pulley - Clutch
41	3246-6	2	Screw-Set, HSH
42	67-7490	1	Key
43	99-0219	1	Belt-V, Banded

☆ Not serviced

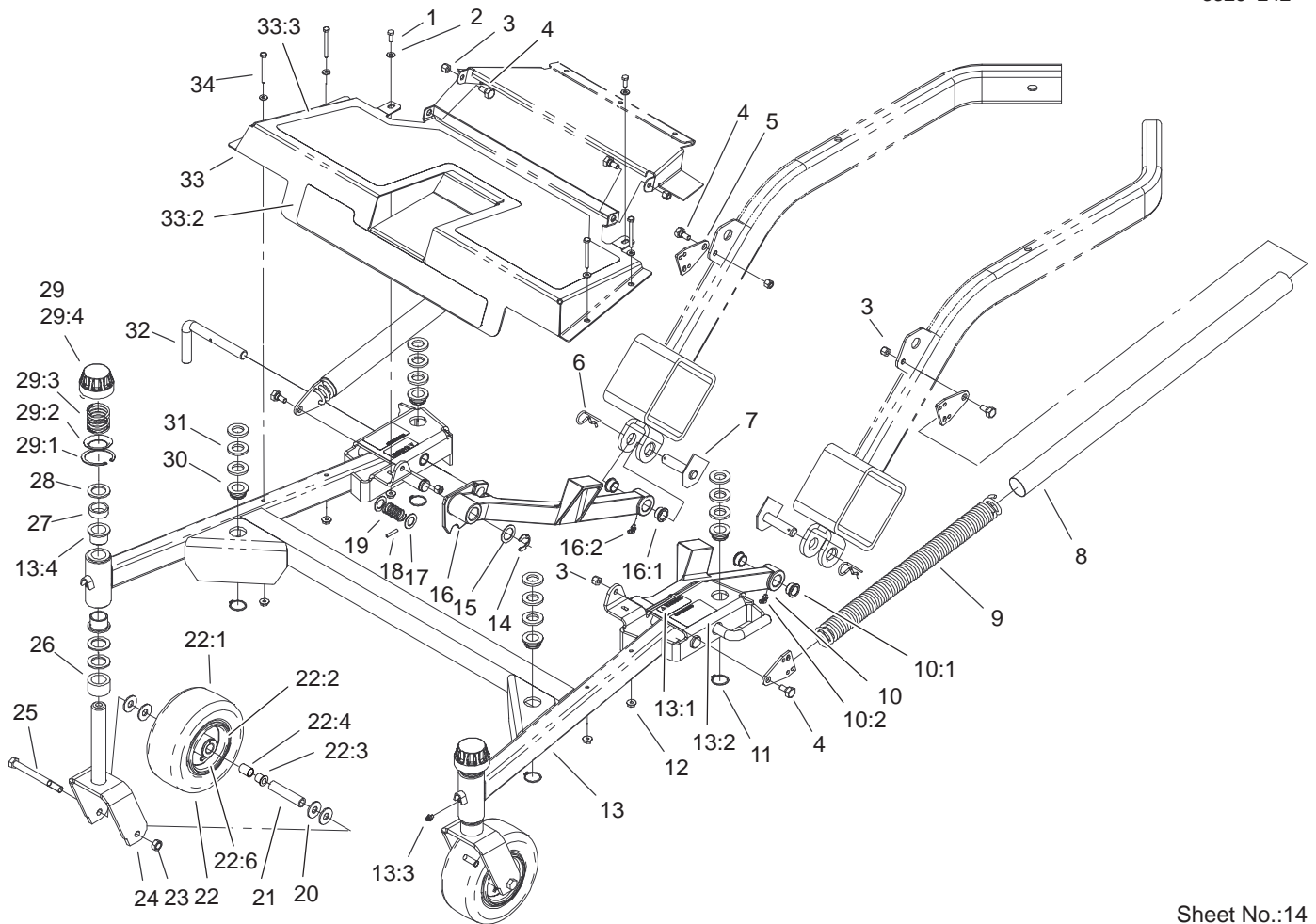


Sheet No.:A1
C-2886

PTO / Gearbox Assembly

Ref. No.	Part No.	Qty.	Description
1	100-5812	3	Plug
2	104-2423	1	Shaft – Cross
3	100-4571	2	Bearing–Cup
4	100-4572	2	Bearing–Cone
5	100-5814	1	Gear – Spiral, RH
6	100-5815	1	Gear – Spiral, LH
7	100-4575	1	Seal
8	100-5816	2	Bearing–Cone
9	100-5817	2	Bearing–Cup
10	100-5818	12	Screw–HH
11	100-5819	2	Seal
12	100-5820	1	Cap – End
13	100-5821	1	End Cap W/ Drain Plugs
14	100-5822	2	Key
15	100-5823	1	Nut – Lock
16	100-5824	1	Washer
17	100-5825	1	Housing – Pinion
18	100-5826	1	Case
19	104-2424	1	Shaft – Pinion
20	100-4583	2	Plug
21	100-5847	2	O–Ring
22	100-5848	1	O–Ring
23	100-7757	1	Shim – Green
24	100-7758	1	Shim – Blue

Ref. No.	Part No.	Qty.	Description
25	100-7759	1	Shim – Brown
26	100-7760	1	Shim – Yellow

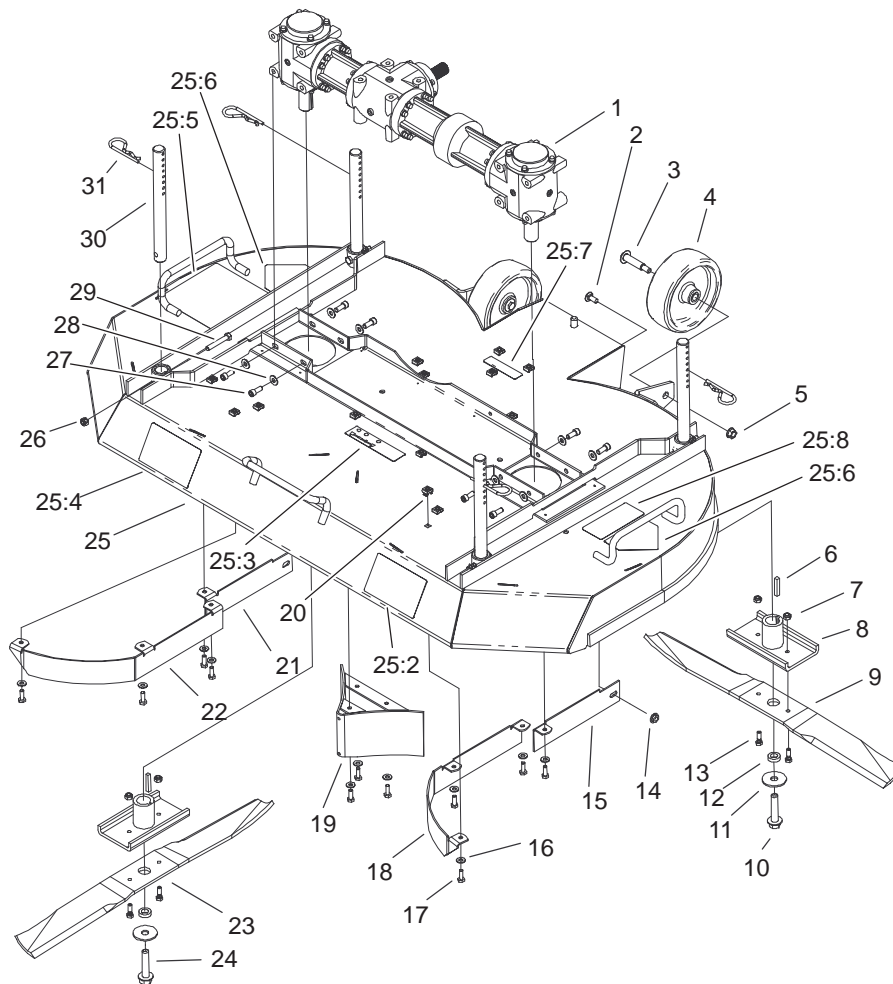


Sheet No.:14

Carrier Frame Assembly

Ref. No.	Part No.	Qty.	Description	Ref. No.	Part No.	Qty.	Description
1	321-4	2	Screw-HH	18	32121-79	2	Pin-Roll
2	3256-22	6	Washer-Flat	19	98-1339	2	Spring - Compression
3	3296-39	6	Nut-Lock, NI	20	3256-6	8	Washer-Flat
4	46-3380	6	Bolt-Shoulder	21	68-8980	2	Spanner-Tire
5	94-4750	4	Plate - End, Spring	22	99-1268	2	Castor Wheel ASM
6	3290-343	2	Pin-Hair	22:1	93-9939	1	Tire
7	94-4755	2	Pivot Pin ASM	22:2	100-2348	1	Rim ASM
8	94-9550	2	Cover - Spring	22:3	62-5580	2	Bearing-Outside
9	94-4664	2	Spring - Extension	22:4	62-5570	1	Bearing-Roller
10	105-1645	1	LH Pusharm ASM	*22:5	100-5832	1	Tube W/ Valve
10:1	27-9080	2	Bearing-Flange	22:6	302-11	1	Fitting-Lube, 45°
10:2	302-60	1	Fitting-Lube	23	32153-5	2	Nut-Lock
11	32120-33	4	Ring-Retaining	24	99-0295-01	2	Castor Fork ASM
12	32128-33	6	Nut-HF	25	325-19	2	Screw-HH
13	100-7780	1	Carrier Frame ASM	26	93-1167	2	Spacer - Castor
13:1	55-4300	2	Decal	27	63-0070	2	Spacer
13:2	100-7769	2	Decal - Adjustment, Cutting Height	28	3-6781	6	Washer-Thrust
13:3	302-5	2	Fitting-Grease	29	92-8862	2	HOC Cap ASM
13:4	94-1291	4	Bushing-Special	29:1	92-5581	1	Ring-Retaining
14	32151-91	2	Ring-Retaining	29:2	92-5583	1	Washer-Cap
15	9202514	2	Washer	29:3	92-5584	1	Spring-Compression
16	105-1646	1	RH Pusharm ASM	29:4	92-8861	1	Cap-HOC
16:1	27-9080	2	Bearing-Flange	30	1-513336	4	Bushing - Deck
16:2	302-60	1	Fitting-Lube	31	1-513338	12	Washer - Flat
17	9202254	4	Washer	32	100-2389	2	Pin - Pivot
				33	100-7774	1	Footrest ASM

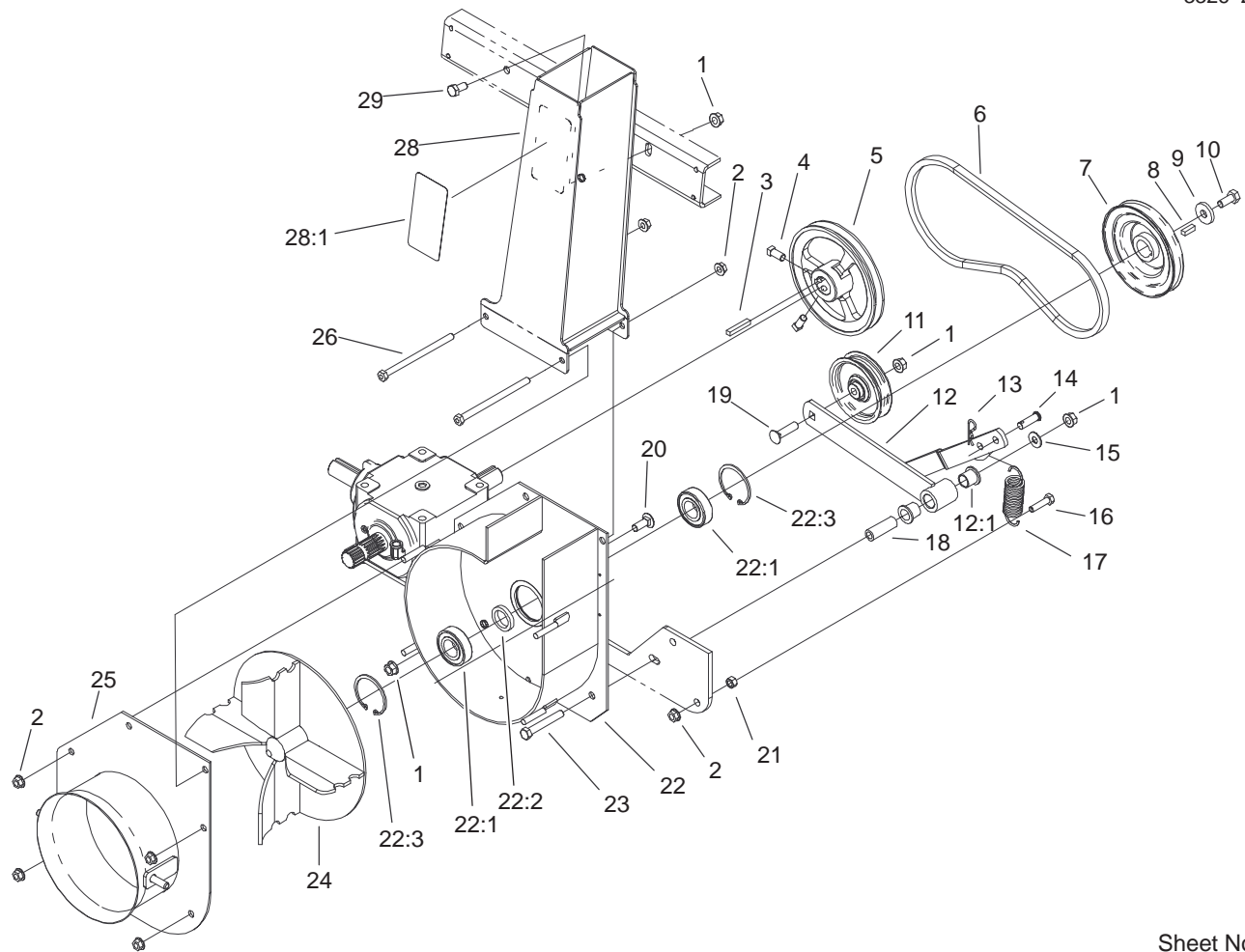
* Not illustrated



Sheet No.:15

Deck Assembly

Ref. No.	Part No.	Qty.	Description	Ref. No.	Part No.	Qty.	Description
1	104-2446	1	Kit-Gearbox	25	104-0371	1	Deck ASM
2	3230-23	2	Screw-CARR	25:2	100-7788	1	Decal - Dds
3	92-1057	2	Bolt-Shoulder	25:3	100-5809	1	Decal - Transmission Fluid
4	95-4102	2	Wheel	25:4	104-0354	1	Decal - 48
5	32128-21	2	Nut-HF	25:5	98-1304	1	Decal - Danger
6	67-7490	2	Key	25:6	43-8480	2	Decal-Danger
7	3296-16	4	Nut-Lock, NI	25:7	80-8760	1	Decal - Danger
8	98-0810-01	2	Blade Retainer ASM	25:8	68-8340	1	Decal-Torque
9	99-4942	1	Blade - 25", LH	26	3296-29	4	Nut-Lock
10	92-5816	1	Bolt-Blade	27	104-0356	8	Screw - HSH
11	86-1990	2	Washer	28	100-2400	8	Washer - Hard
12	99-0217	2	Spacer	29	322-10	4	Screw-HH
13	99-0283	4	Bolt - Shear	30	100-2393	4	Pin - Deck
14	32128-13	2	Nut-HF	31	3290-256	4	Pin-Hair
15	104-0388-01	1	Bracket-Discharge, LH				
16	3256-22	15	Washer-Flat				
17	321-4	15	Screw-HH				
18	98-3015-01	1	Baffle - LH				
19	100-9655-01	1	Center Baffle ASM				
20	32115-5	15	Nut-Retained				
21	104-0389-01	1	Bracket-Discharge, RH				
22	98-3016-01	1	Baffle - RH				
23	99-4941	1	Blade - 25", RH				
24	104-2444	1	Bolt-Blade, LH Thread				

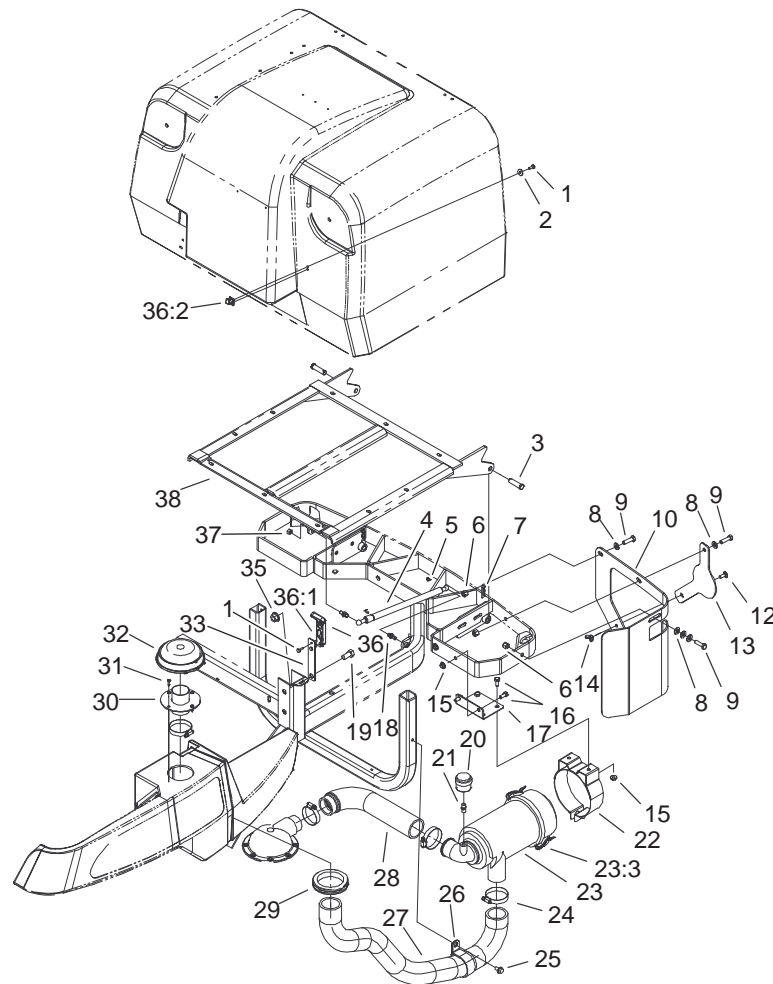


Sheet No.:17

Blower Assembly

Ref. No.	Part No.	Qty.	Description
1	32128-21	4	Nut-HF
2	32128-25	7	Nut-Flange
3	67-7490	1	Key
4	3242-4	2	Screw-Set, SQH
5	94-4630	1	Pulley - Gearbox
6	19-2650	1	V-Belt
7	99-0287	1	Pulley - Impeller
8	20-9540	1	Key
9	65-8680	1	Washer - Thrust, Plain
10	323-5	1	Screw-HH
11	56-4920	1	Pulley-Idler
12	105-1626	1	Idler Arm ASM
12:1	256-90	2	Bushing-Flange
13	3290-467	1	Pin-Hair
14	283-2	1	Pin-Clevis
15	3256-3	1	Washer-Flat
16	322-6	1	Screw-HH
17	67-1440	1	Spring-Extension
18	95-6448	1	Spacer
19	3231-4	1	Screw-CARR
20	3231-2	1	Screw-CARR
21	3217-6	1	Nut-Hex
22	105-1627	1	Blower Housing ASM
22:1	251-82	2	Bearing-Ball
22:2	95-6427	1	Spacer - Bearing
22:3	32120-8	2	Ring-Snap

Ref. No.	Part No.	Qty.	Description
23	323-12	1	Screw-HH
24	99-0296-03	1	Impeller ASM
25	100-7795-03	1	Cover ASM
26	322-29	2	Screw-HH
28	105-1661	1	Impeller Chute ASM W/ Decal
28:1	79-0360	1	Decal-Danger
29	323-4	1	Screw-HH

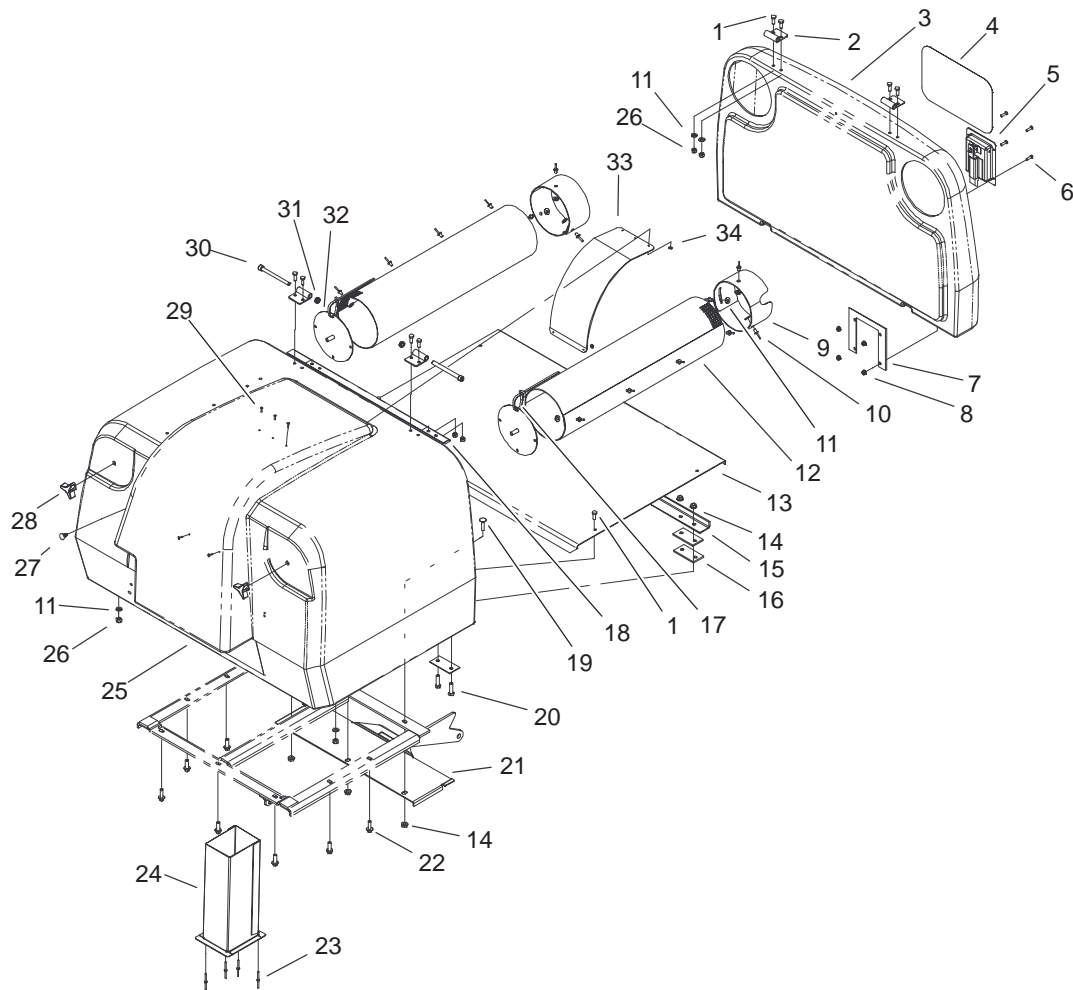


Sheet No.:18

Air Cleaner and Bagger Frame Assembly

Ref. No.	Part No.	Qty.	Description	Ref. No.	Part No.	Qty.	Description
1	3290-134	3	Screw	24	2412-130	4	Clamp-Hose
2	3256-61	1	Washer-Flat	25	32144-14	1	Screw-HWH
3	283-40	2	Pin-Clevis	26	2412-102	1	R-Clamp
4	98-3043	1	Spring-Gas	27	100-2405	1	Hose
5	98-3044	2	Clip-Safety	28	100-2406	1	Hose
6	3296-39	3	Nut-Lock, NI	29	240-8	1	Grommet-Rubber
7	3290-355	2	Pin-Hair	30	100-2411-03	1	Flanged Connector ASM
8	3256-24	5	Washer-Flat	31	32144-124	4	Screw-PPH
9	323-7	3	Screw-HH	32	100-2436	1	Hood
10	104-0355-03	1	Guard - Filter, Air	33	105-1664	1	Plate-Latch
12	3230-23	1	Screw-CARR	35	32128-23	1	Nut-HF
13	104-0364-03	1	Plate - Cover	36	94-5626	1	Latch-Draw, Flexible
14	32103-29	1	Nut-Wing	36:1	100-5806	1	Handle-Latch
15	32128-13	4	Nut-HF	36:2	100-5807	1	Keeper-Latch
16	322-3	4	Screw-HH	37	32152-1	2	Nut-Lock, NI
17	100-2412-03	1	Bracket	38	104-2432-03	1	Grass Bin Frame ASM
18	88-6770	2	Stud-Ball				
19	325-4	1	Screw-HH				
20	104-7755	1	Indicator-Filter, Air				
21	94-1416	1	Indicator Adapter ASM				
22	100-2435	1	Bracket-A/C				
23	100-2434	1	Cleaner-Air				
*23:1	100-4557	1	Filter - Safety				
*23:2	100-4556	1	Element-A/C				
23:3	99-3174	2	Clip-Cleaner, Air				
*23:4	99-3175	1	Valve-Ejector, Dust				

* Not illustrated

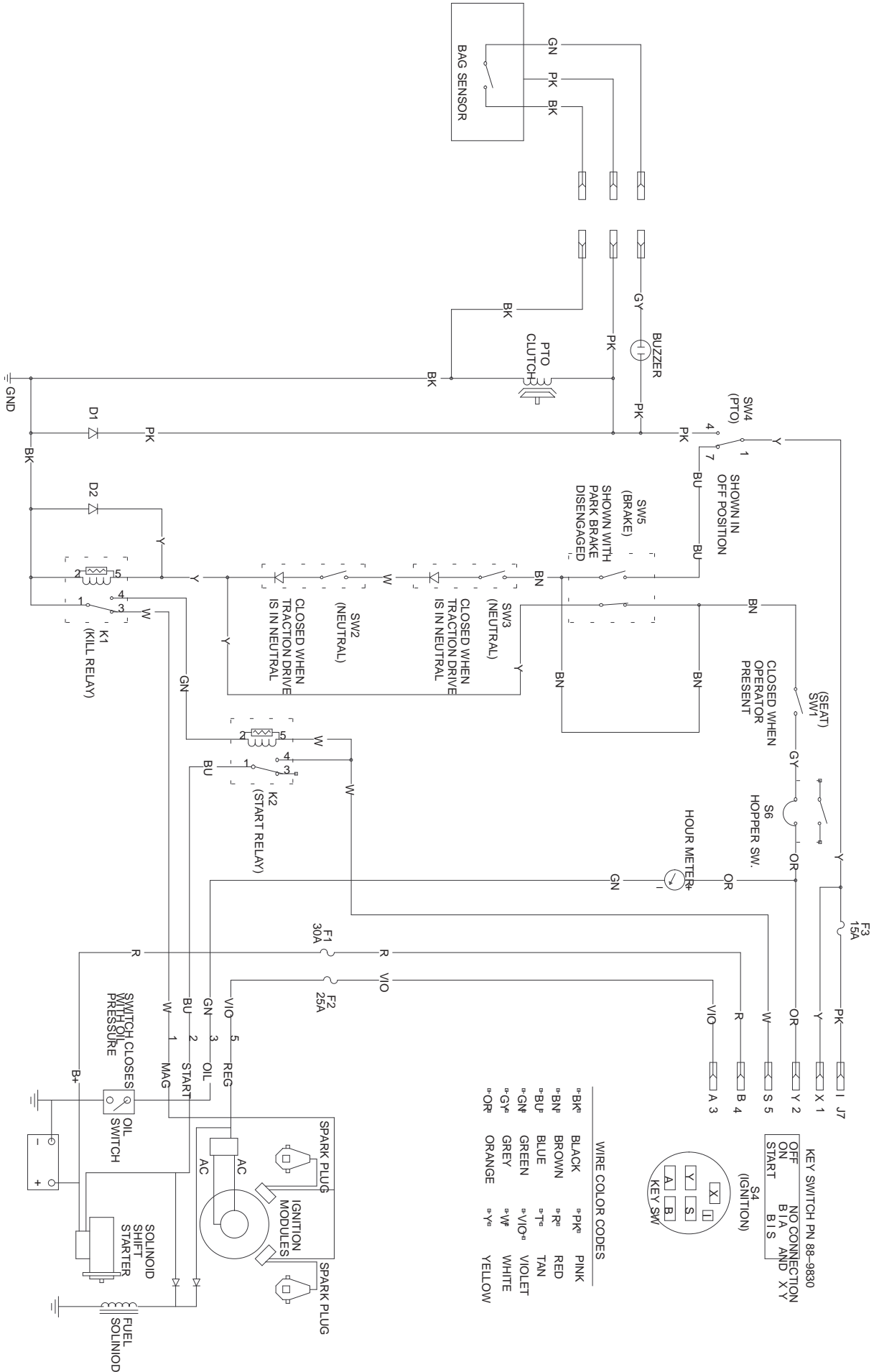


Sheet No.:19

Bagger Assembly

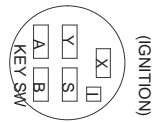
Ref. No.	Part No.	Qty.	Description	Ref. No.	Part No.	Qty.	Description
1	321-4	10	Screw-HH	27	104-0395	1	Plug - Plastic
2	98-3027-03	4	Hinge	28	233-52	2	Knob
3	100-9617	1	Cover - Bin	29	3269-17	5	Rivet-Pop
4	67-7310	1	Decal - Toro Logo, 7"	30	3274-102	2	Screw-HSH
5	100-9631	1	Lever - Latch	31	3296-59	2	Nut-Lock NI
6	104-2408	4	Screw-Head, Button	32	95-6444-03	2	Plate ASM
7	100-9632-03	1	Plate - Latch	33	100-4552	1	Plate - Wear
8	32128-17	4	Nut-Lock, Flange	34	3256-12	5	Washer-Flat
9	100-5845	2	Ring - Support				
10	3290-412	14	Rivet				
11	3256-22	22	Washer-Flat				
12	95-6441	2	Screen				
13	100-4550-03	1	Floor - Hopper				
14	32128-25	14	Nut-Flange				
15	98-0849-03	1	Flange - Bin				
16	98-3004	6	Spacer				
17	3290-378	8	Tie-Cable				
18	98-3036-03	1	Angle - Bin				
19	3230-3	3	Screw-CARR				
20	322-6	4	Screw-HH				
21	100-7773-03	1	Plate - Latch				
22	3234-17	7	Screw-HHF				
23	98-7310	4	Rivet				
24	95-6482-03	1	Chute ASM				
25	104-2417	1	Bin - Grass				
26	3296-42	10	Nut-Lock, NI				

Electrical Schematic



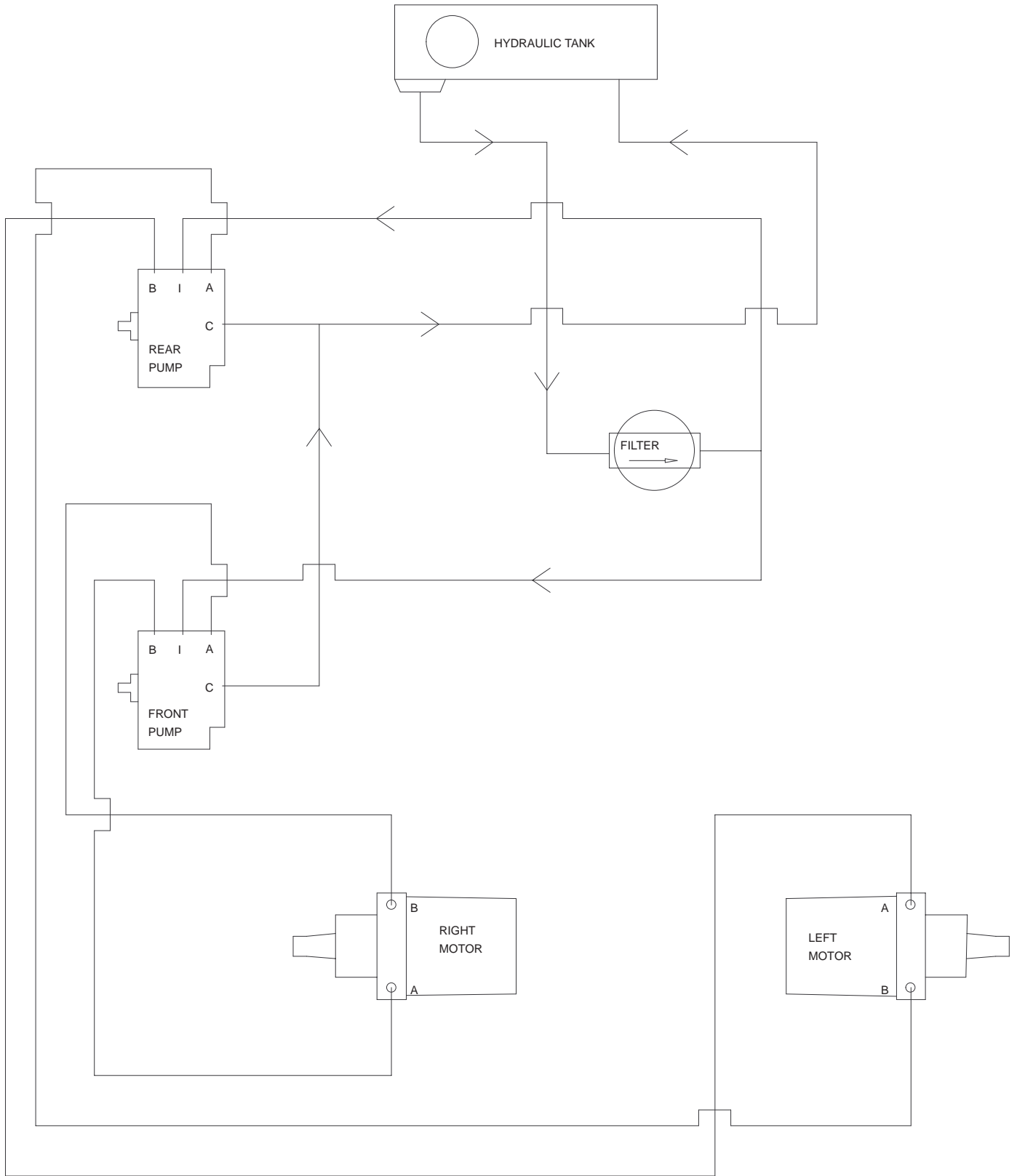
WIRE COLOR CODES

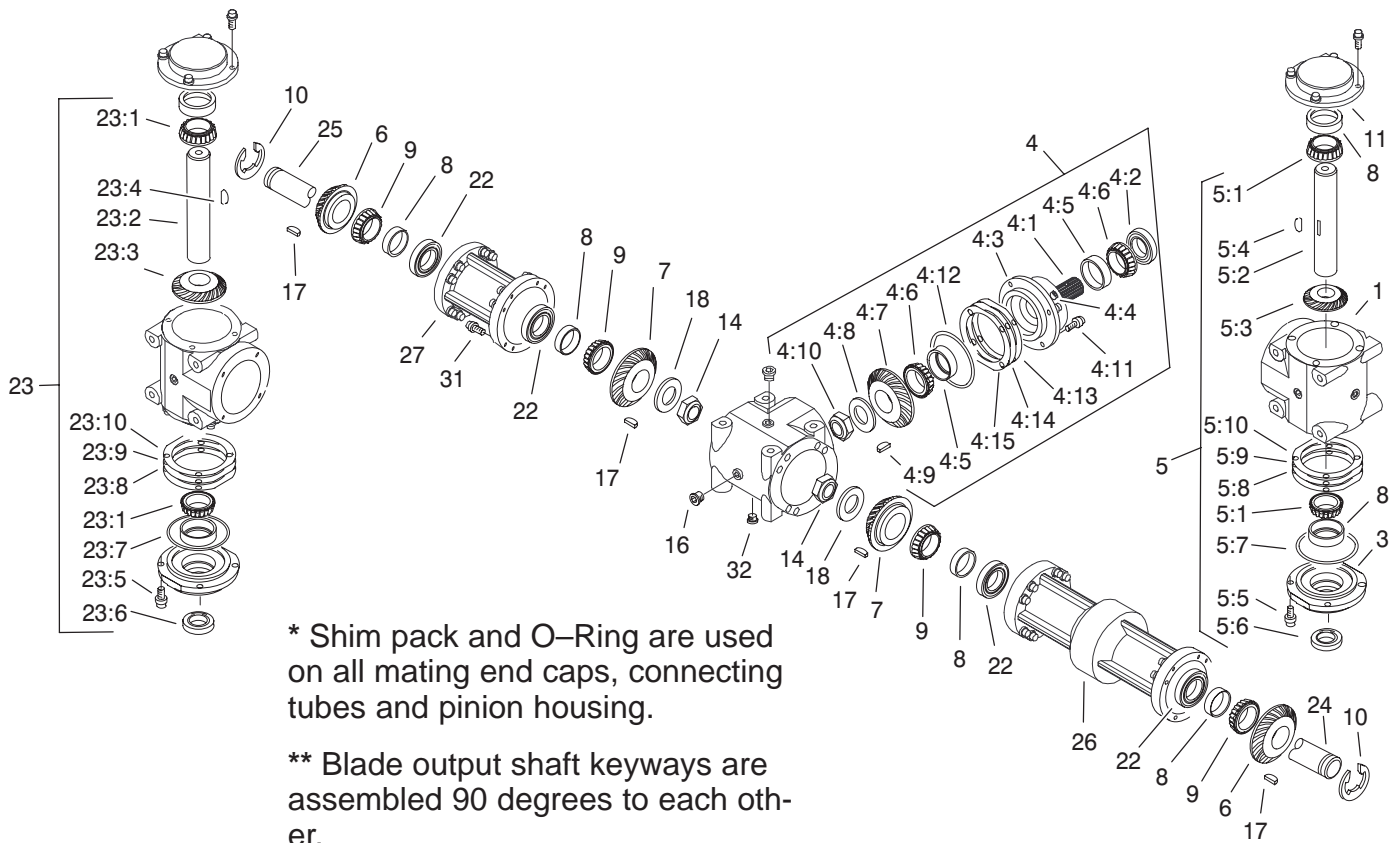
°BK°	BLACK	°PK°	PINK
°BN°	BROWN	°R°	RED
°BU°	BLUE	°T°	TAN
°GN°	GREEN	°V/O°	VIOLET
°GY°	GREY	°W°	WHITE
°OR°	ORANGE	°Y°	YELLOW



KEY SWITCH PN 88-9830
 OFF NO CONNECTION
 ON B1A AND X Y
 START B1S

Hydraulic Schematic





* Shim pack and O-Ring are used on all mating end caps, connecting tubes and pinion housing.

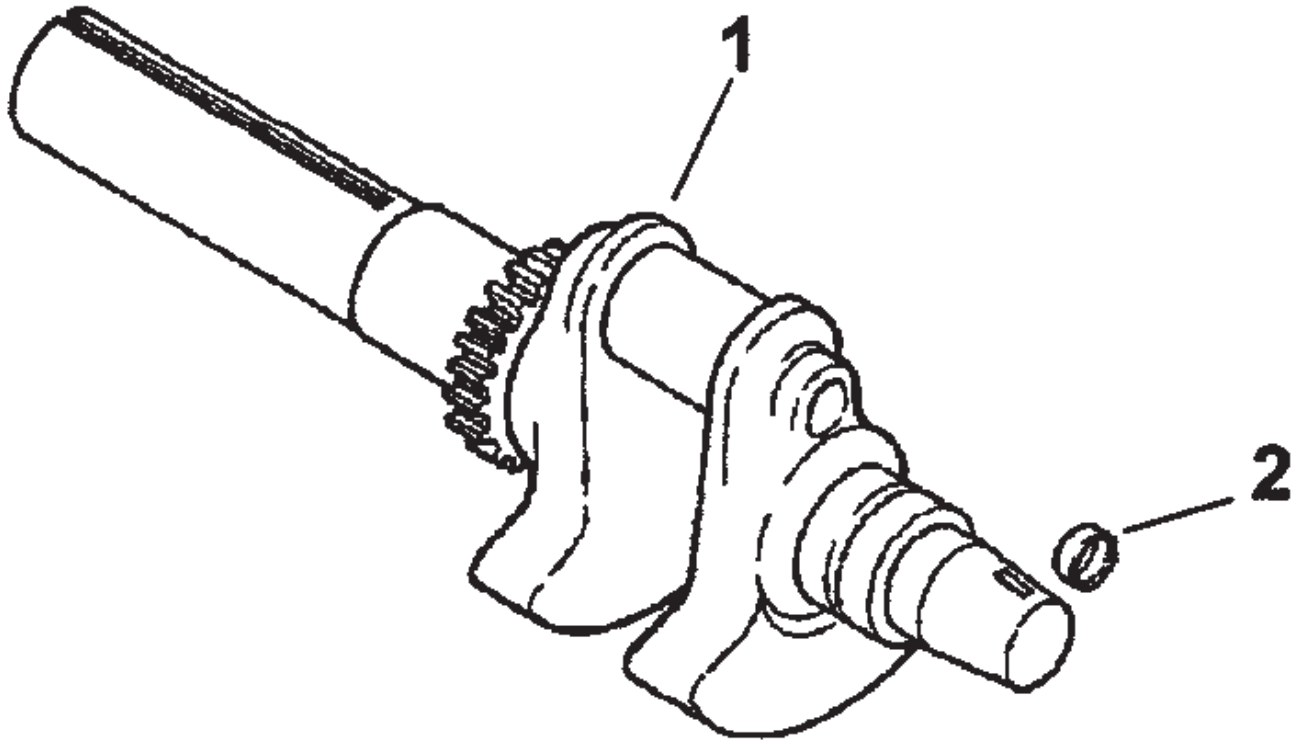
** Blade output shaft keyways are assembled 90 degrees to each other.

Sheet No.: A1
C-2839

Gearbox Assembly

Ref. No.	Part No.	Qty.	Description
1	100-4564	3	Case
3	100-4566	2	Cap - End, Open
4	100-7755	1	Splined Pinion ASM
4:1	100-4567	1	Shaft - Input, Splined
4:2	100-4575	1	Seal
4:3	100-4565	1	Housing - Pinion
4:4	100-4583	1	Plug
4:5	100-4571	2	Bearing-Cup
4:6	100-4572	2	Bearing-Cone
4:7	100-4569	1	Gear - 27 Tooth
4:8	100-4581	1	Washer
4:9	100-4580	1	Key - Woodruff
4:10	100-4577	1	Nut - Jam
4:11	100-4578	4	Screw
4:12	100-4582	1	O-Ring
4:13	100-4591	2	Shim - Brown
4:14	100-4592	1	Shim - Blue
4:15	100-4593	1	Shim - Green
5	100-7754	1	LH Shaft ASM
5:1	100-4572	2	Bearing-Cone
5:2	100-4568	1	Shaft - Cross, A/D
5:3	100-4570	1	Gear - 29 Tooth
5:4	100-4580	1	Key - Woodruff
5:5	100-4578	4	Screw
5:6	100-4576	1	Seal
5:7	100-4582	1	O-Ring

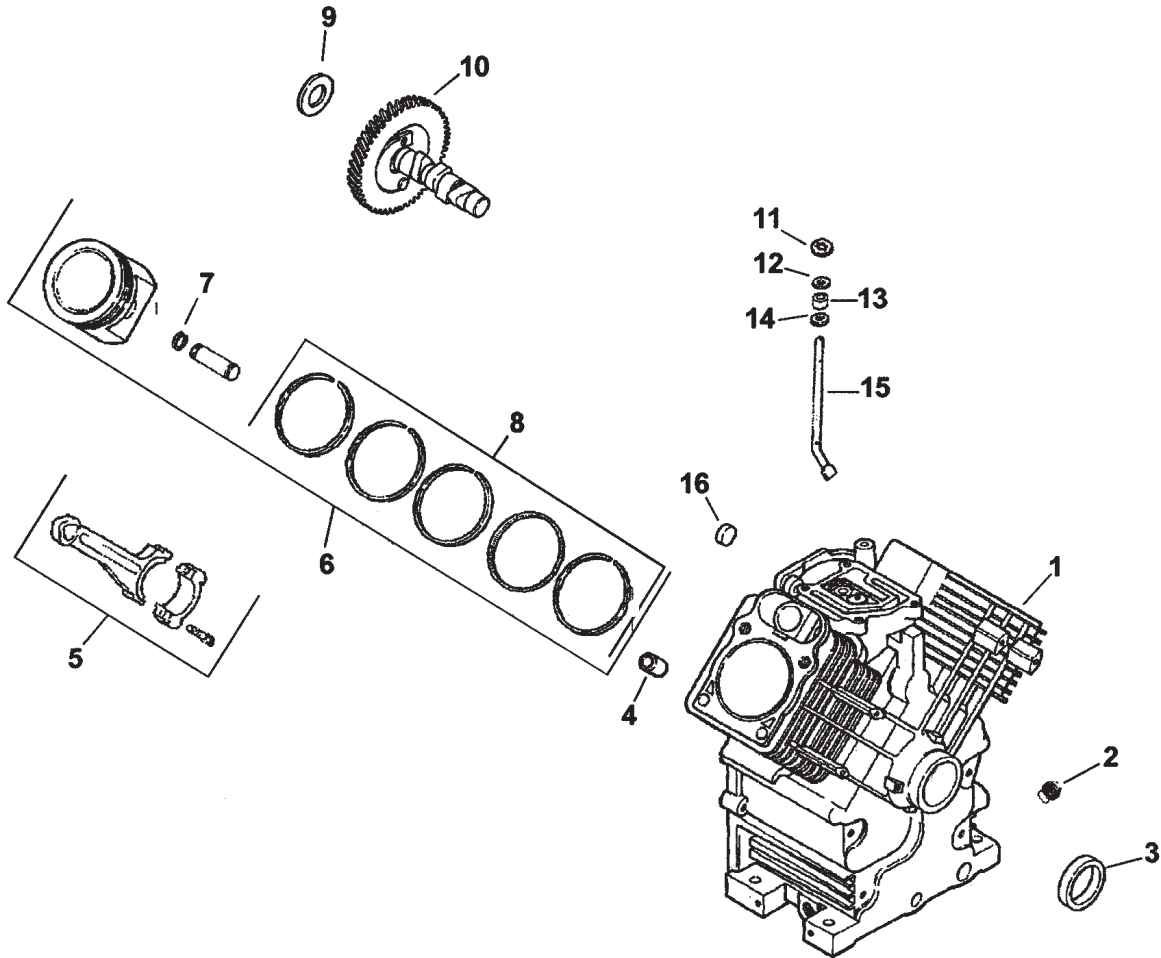
Ref. No.	Part No.	Qty.	Description
5:8	100-4591	2	Shim - Brown
5:9	100-4592	1	Shim - Blue
5:10	100-4593	1	Shim - Green
6	100-4569	3	Gear - 27 Tooth
7	100-4570	4	Gear - 29 Tooth
8	100-4571	10	Bearing-Cup
9	100-4572	10	Bearing-Cone
10	100-4573	2	Ring - Retaining
11	100-4574	2	Cap - End, Closed
14	100-4577	3	Nut - Jam
16	100-4579	8	Plug
17	100-4580	7	Key - Woodruff
18	100-4581	3	Washer
22	100-4585	4	Seal
23	104-2427	1	RH Shaft ASM
23:1	100-4572	2	Bearing-Cone
23:2	104-2422	1	Shaft - Cross, B/D
23:3	100-4570	1	Gear - 29 Tooth
23:4	100-4580	1	Key - Woodruff
23:5	100-4578	4	Screw
23:6	100-4576	1	Seal
23:7	100-4582	1	O-Ring
23:8	100-4591	2	Shim - Brown
23:9	100-4592	1	Shim - Blue
23:10	100-4593	1	Shim - Green



Crankshaft Assembly Kohler Engine CH25S PS-68670

Ref. No.	Part No.	Qty.	Description
1	24 014 72-S	1	Crankshaft ASM (Includes Ref. # 2)
2	52 139 09-S	1	Plug-Cup

Ref. No.	Part No.	Qty.	Description

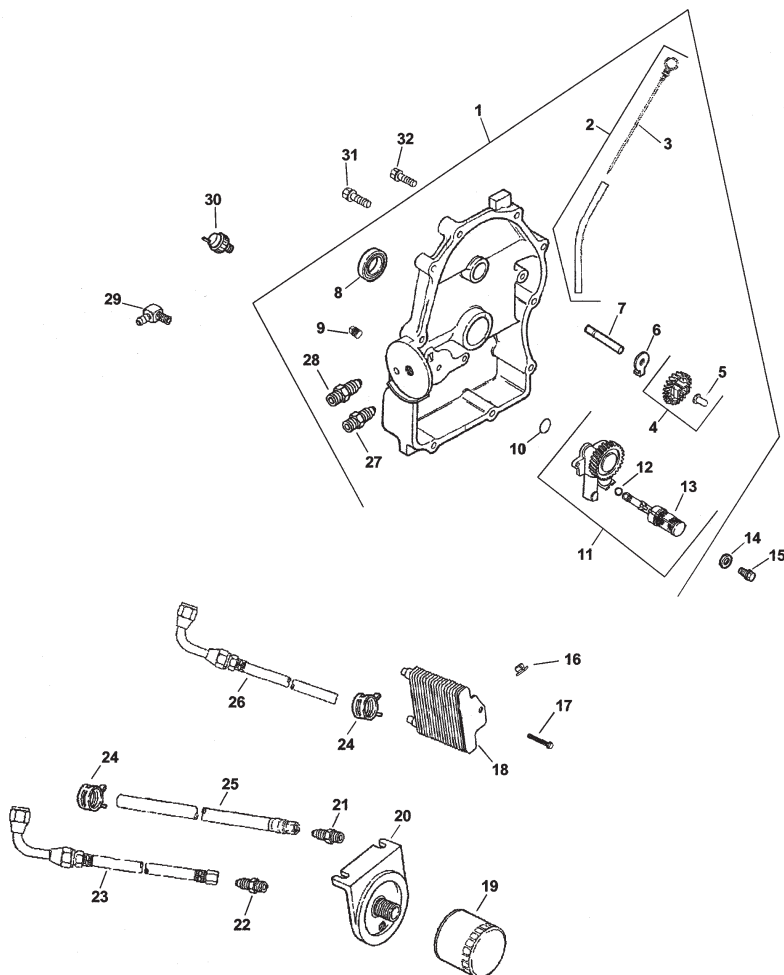


Crankcase Assembly Kohler Engine CH25S PS-68670

Ref. No.	Part No.	Qty.	Description
1	24 561 138-S	1	Kit-Crankcase (Incl. Ref. # 2, 4, 16, & 24 113 56-S)
2	25 139 57-S	2	Plug-SQH
3	24 032 01-S	1	Seal-Oil, Front
4	24 380 13-S	6	Pin-Dowel, Locating
5	24 067 13-S	2	Rod-Connecting (STD)
5	24 067 14-S	2	Rod-Connecting (.25)
6	24 874 06-S	2	Set-Piston w/ Ring (STD) (Incl. Ref.#7, 8)
7	24 018 01-S	4	Retainer-Pin, Piston
8	24 108 04-S		Set-Ring (STD)
9	12 422 09-S	A/R	Shim-Camshaft
9	12 422 13-S	A/R	Shim-Camshaft
9	12 422 07-S	A/R	Shim-Camshaft
9	12 422 08-S	A/R	Shim-Camshaft
9	12 422 10-S	A/R	Shim-Camshaft
9	12 422 11-S	A/R	Shim-Camshaft
9	12 422 12-S	A/R	Shim-Camshaft
10	24 012 10-S	1	Camshaft
11	24 018 09-S	1	Ring-Retaining
12	M-931010-S	1	Washer-Nylon (top)
13	28 032 09-S	1	Seal-Governor, Cross Shaft

Ref. No.	Part No.	Qty.	Description
14	24 468 15-S	1	Washer (bottom)
15	24 144 33-S	1	Shaft-Cross, Governor
16	52 139 09-S	1	Plug-Cup
*	24 113 56-S	1	Decal

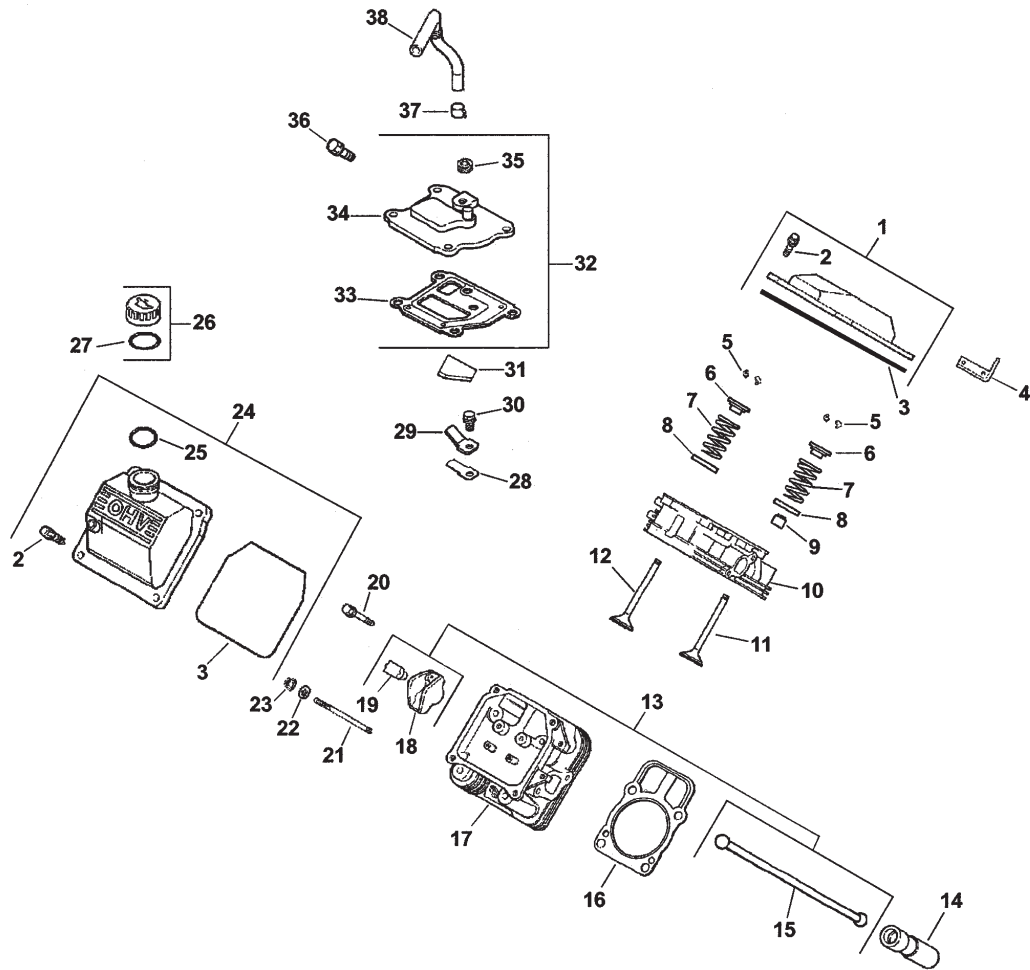
* Not illustrated



Oil Pan/Lubrication Assembly Kohler Engine CH25S PS-68670

Ref. No.	Part No.	Qty.	Description	Ref. No.	Part No.	Qty.	Description
1	24 009 96-S	1	Kit-Plate, Closure (Incl. Ref.# 2-13, 27, 28)	19	52 050 02-S	1	Filter-Oil
2	24 755 121-S	1	Kit-Dipstick and Tube (Incl. Ref. # 3)	20	25 029 01-S	1	Adapter-Oil Filter, Remote
3	24 038 10-S	1	Dipstick	21	52 136 02-S	1	Nipple
4	24 043 12-S	1	Kit-governor gear w/ pin (Incl. Ref. # 5)	22	52 155 03-S	1	Connector-Reducing
5	12 380 01-S	1	Pin-Regulating, Governor	23	24 326 16-S	1	Hose-Oil (lower adapter to upper Closure Plate)
6	54 488 02-S	1	Tab-Locking	24	24 237 03-S	2	Clamp-Hose
7	12 144 02-S	1	Shaft-Gear, Governor	25	24 326 60-S	1	Hose-Oil (upper adapter to upper oil cooler)
8	52 032 08-S	1	Seal-Oil (PTO end)	26	24 326 33-S	1	Hose-Oil (lower oil cooler to lower closure plate)
9	25 139 60-S	1	Plug-Pipe, Allen Head	27	24 294 09-S	1	Connector
10	24 153 08-S	1	O-Ring	28	24 294 08-S	1	Connector
11	24 393 10-S	1	Oil Pump ASM (Incl. Ref. # 12 & 13)	29	25 155 02-S	1	Connector
12	24 153 01-S	1	O-Ring-Pick-Up, Oil	30	24 099 03-S	1	Switch-Pressure, Oil
13	24 381 04-S	1	Pick-up-Oil	31	24 086 16-S	9	Screw-HF
14	M-631005-S	2	Washer-Plain	32	24 086 17-S	1	Screw-HF
15	M-645025-S	2	Screw-HF	*	24 113 25-S	1	Decal-Cooler, Oil
16	24 100 01-S	2	Nut-Plastic				
17	24 086 12-S	2	Screw-Cap, Hex				
18	24 594 12-S	1	Cooler-Oil				

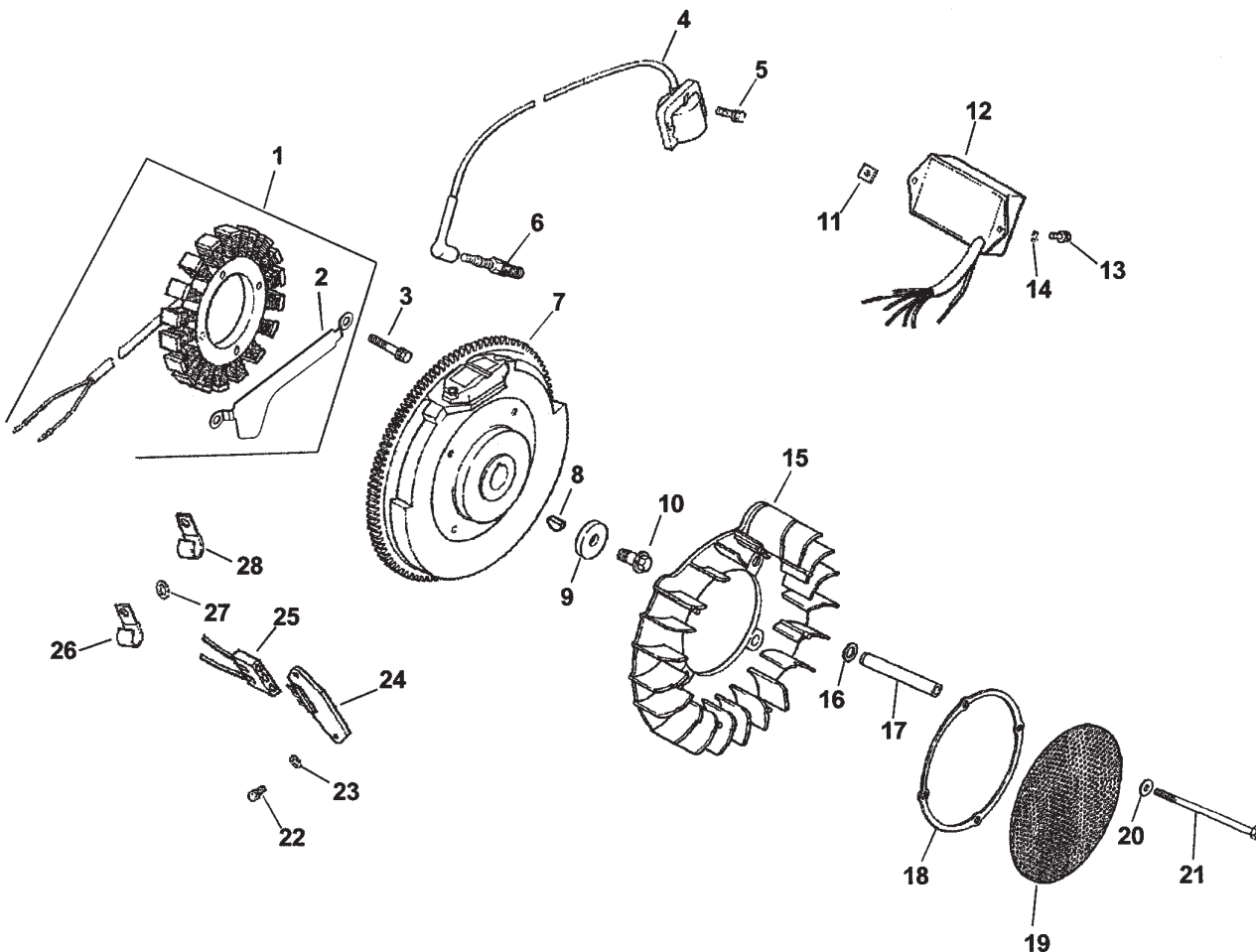
* Not illustrated



Head/Valve/Breather Assembly Kohler Engine CH25S PS-68670

Ref. No.	Part No.	Qty.	Description
1	24 755 74-S	1	Kit-Valve Cover, Plain (Incl. Ref. # 2 & 3)
2	24 086 32-S	4	Screw-Shoulder
3	24 153 16-S	1	O-Ring
4	24 445 01-S	1	Strap-Lifting
5	12 755 03-S	4	Kit-Retainer
6	12 173 01-S	4	Cap-Spring, Valve
7	24 089 02-S	4	Spring-Valve
8	235011-S	4	Retainer-Spring
9	24 032 05-S	2	Seal-Stem, Valve
10	24 318 65-S	1	#1 Cylinder Head ASM
11	24 017 01-S	2	Valve-Intake (STD)
11	24 017 02-S	2	Valve-Intake (.25)
12	24 016 01-S	2	Valve-Exhaust (STD)
12	24 016 02-S	2	Valve-Exhaust (.25)
13	24 755 66-S	1	Kit-Train, Valve (Incl. Ref. #15, 18, 19)
14	25 351 01-S	4	Lifter-Valve
15	24 411 05-S	4	Rod-Push
16	24 041 37-S	2	Gasket-Head, Cylinder
17	24 318 66-S	1	#2 Cylinder Head ASM
18	25 186 01-S	4	Arm-Rocker
19	24 599 01-S	4	Pivot-Arm, Rocker
20	M640034-S	4	Screw-HF

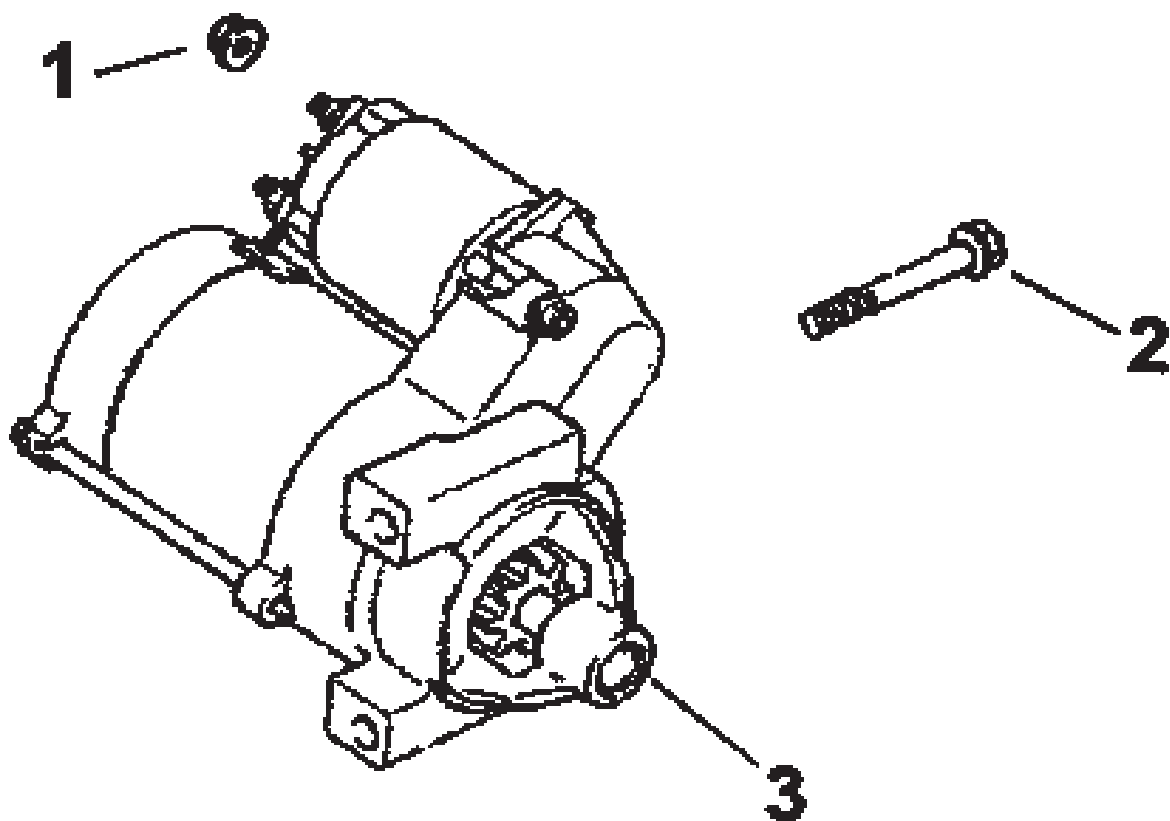
Ref. No.	Part No.	Qty.	Description
21	24 072 09-S	8	Stud-Head, Cylinder
22	24 468 16-S	8	Washer-Flat
23	24 100 10-S	8	Nut-HF
24	24 755 75-S	1	Kit-Oil Fill, Valve Cover (Incl. Ref. #2, 3 & 25)
25	24 153 09-S	1	O-Ring
26	24 755 46-S	1	Kit-Cap, Oil Fill (Incl. Ref. # 27)
27	12 153 03-S	1	O-Ring-Cap, Oil Fill
28	24 402 03-S	1	Reed-Breather
29	12 018 01-S	1	Retainer-Reed, Breather
30	M-545010-S	1	Screw-HF
31	24 050 01-S	1	Filter-Breather
32	24 033 01-S	1	Kit-Breather (Incl. Ref. # 33-35)
33	24 096 58-S	1	Cover-Breather
34	24 041 23-S	1	Gasket-Breather
35	25 139 60-S	1	Plug-Pipe, Allen Head
36	M-645020-S	4	Screw-HF
37	X-426-9-S	1	Clamp-Breather
38	24 326 26-S	1	Hose-Breather



Ignition/Electrical Assembly Kohler Engine CH25S PS-68670

Ref. No.	Part No.	Qty.	Description	Ref. No.	Part No.	Qty.	Description
1	54 755 09-S	1	Kit-Stator, 15 amp (Incl. Ref. # 2)	23	X-25-92-S	2	Washer-Plain
2	24 126 71-S	1	Bracket-Wire, Stator	24	25 403 03-S	1	Rectifier-Regulator (15 amp)
3	M-548025-S	2	Screw-Cap, Hex	25	236602-S	1	Connector
4	24 584 15-S	2	Module-Ignition	26	47 154 01-S	1	Clip-Cable
5	M-561025-S	4	Screw-HSH	27	X-25-63-S	1	Washer-Plain
6	12 132 06-S	2	Plug-Spark	28	48 154 02-S	1	Clip-Cable
7	24 025 13-S	1	Flywheel	*	24 176 16-S	1	Harness-Wiring
8	X-42-15-S	1	Key	*	24 518 12-S	1	Lead-Black (5" - 12 gauge - insulated grip barrel eyelet terminals)
9	12 468 03-S	1	Washer-Plain				
10	12 086 14-S	1	Screw-HF				
11	24 100 02-S	2	Nut-Plastic	*	25 086 43-S	1	Screw-Set (adjusts grass scraper blade)
12	24 584 09-S	1	Module-Advance, Speed	*	25 454 03-S	2	Tie
13	24 086 41-S	2	Screw-Head, Phillips				
14	X-22-11-S	1	Washer-Lock				
15	24 157 03-S	1	Fan				
16	24 468 11-S	4	Washer-Spring				
17	24 112 14-S	4	Spacer-Screen, Grass				
18	24 141 06-S	1	Ring-Support				
19	24 162 25-S	1	Screen-Grass				
20	X-25-53-S	4	Washer-Plain				
21	25 086 55-S	4	Screw				
22	24 086 18-S	2	Screw-Head, Phillips				

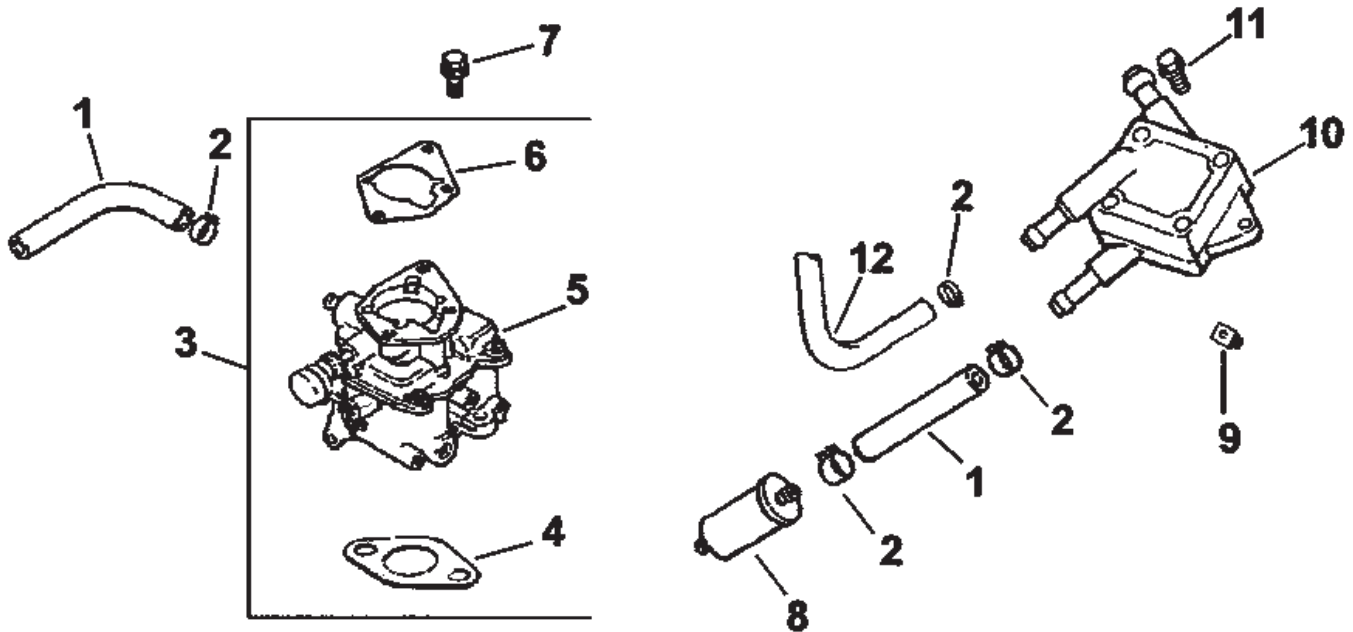
* Not illustrated



Starting System Assembly Kohler Engine CH25S PS-68670

Ref. No.	Part No.	Qty.	Description	Ref. No.	Part No.	Qty.	Description
1	M-841080-S	1	Nut-HF				
2	M-839080-S	2	Screw-HF				
3	25 098 08-S	1	Solenoid Shift Starter ASM (service w/ kits listed below)				
*	25 755 33-S	1	Kit-Drive, Pinion (Includes Ring: 25 141 01-S)				
*	25 221 01-S	1	Kit-Brush				
*	25 435 04-S	1	Kit-Solenoid				

* Not illustrated



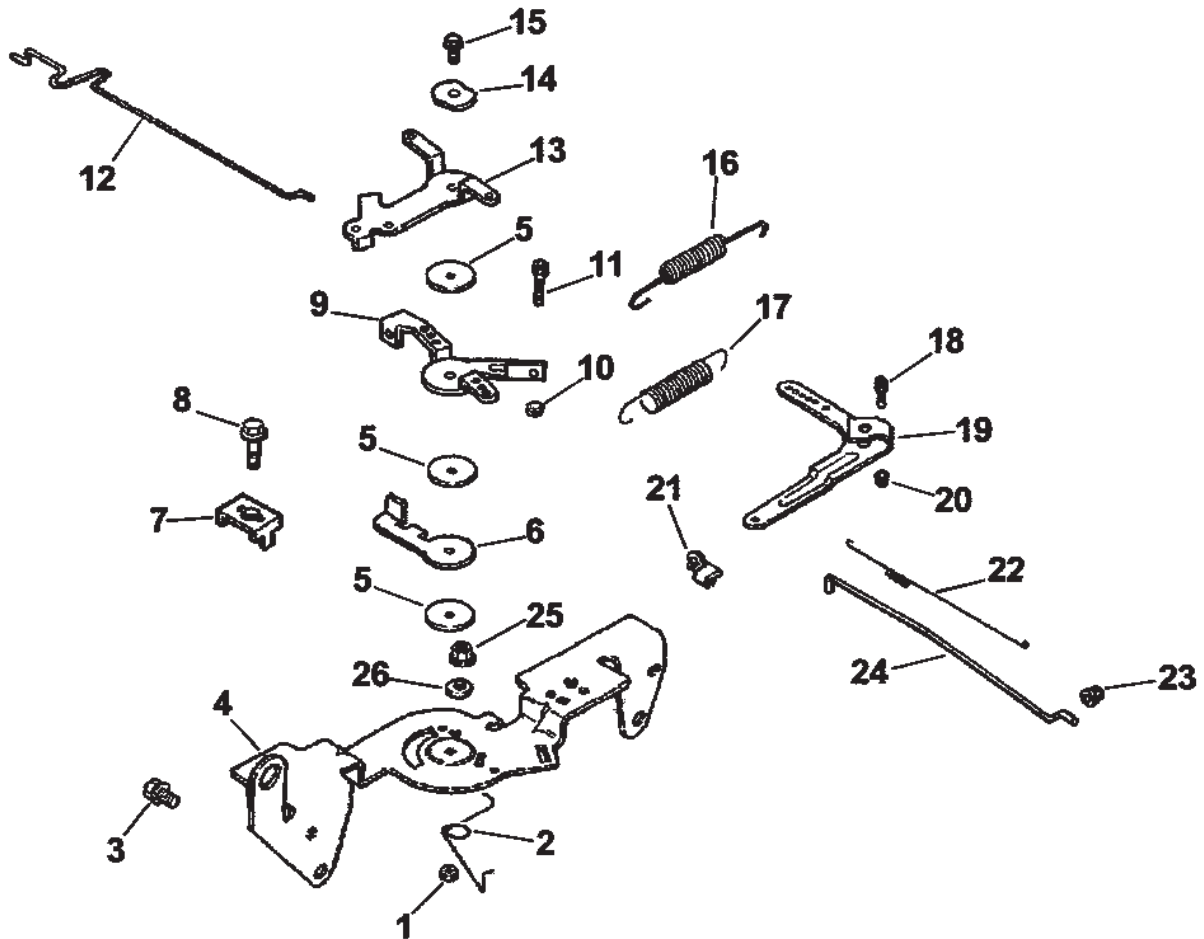
Fuel System Assembly Kohler Engine CH25S PS-68670

Ref. No.	Part No.	Qty.	Description
1	25 353 32-S	2	Line-Fuel
2	25 237 14-S	6	Clamp-Hose
3	24 853 77-S	1	Kit-Carburetor w/ Gasket (Incl. Ref. # 4-6)
4	24 041 06-S	1	Gasket-Cleaner, Air
☆5		1	Carburetor ASM
6	24 041 17-S	1	Gasket-Carburetor
7	M-651030-S	2	Screw-HF
8	24 050 02-S	1	Filter-Fuel
9	24 100 01-S	2	Nut-Plastic
10	24 393 16-S	1	Pump-Fuel-Pulse
11	24 086 12-S	2	Screw-Cap, Hex
12	24 353 02-S	1	Line-Fuel
*	24 757 01-S	1	Kit-Solenoid (Includes: solenoid seat 24 521 01-S, O-Ring 24 153 04-S, O-Ring 24 153 05-S, O-Ring 24 153 06-S, solenoid screw 24 086 07-S, and solenoid 24 435 01-S)
*	24 757 02-S	1	Kit-Float

Ref. No.	Part No.	Qty.	Description
*	24 757 03-S	1	Kit-Repair, Carburetor (Includes: inlet needle valve clip 24 154 01-S, inlet needle valve 24 462 01-S, carburetor body screw 24 086 09-S, carburetor body gasket 24 041 09-S, slow jet o-ring 24 153 02-S, o-ring 24 153 04-S, o-ring 24 153 05-S, o-ring 24 153 16-S, idle needle 24 368 01-S, and idle needle spring 24 089 11-S)
*	24 757 08-S	1	Kit-Repair, Accelerator Pump Seal & Bushing
*	24 757 09-S	1	Kit-Repair, Accelerator Pump Diaphragm
*	25 454 03-S	1	Tie

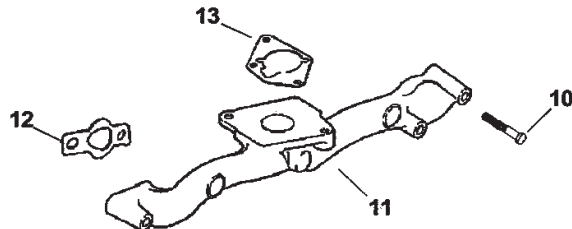
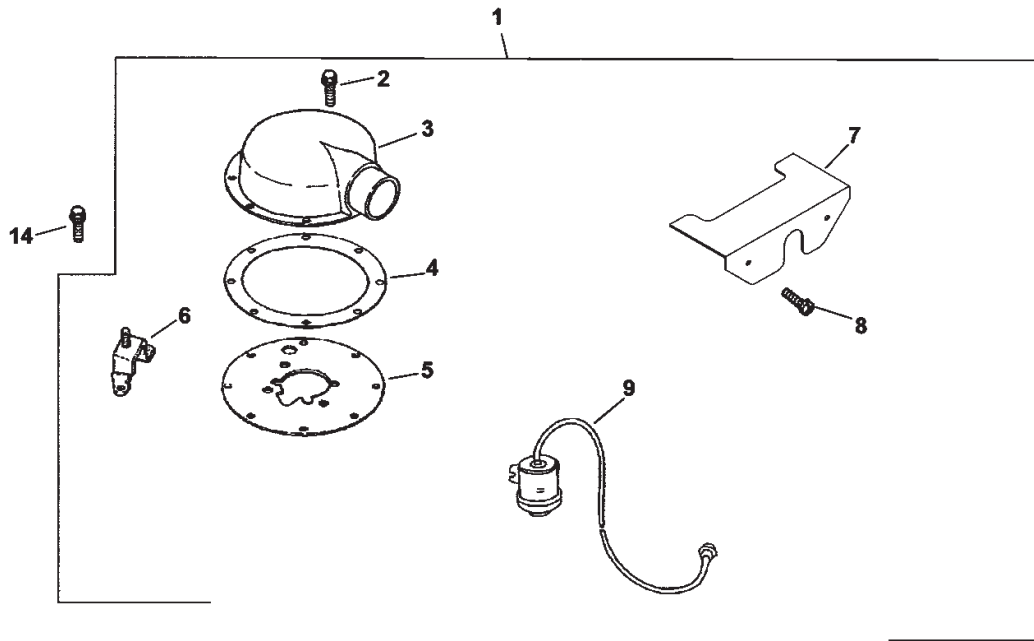
* Not illustrated

☆ Not serviced



Engine Control Assembly Kohler Engine CH25S PS-68670

Ref. No.	Part No.	Qty.	Description	Ref. No.	Part No.	Qty.	Description
1	M-547050-S	1	Nut-Hex	23	25 158 08-S	1	Busing-Linkage, Throttle
2	24 089 03-S	1	Spring-Return, Choke	24	24 079 01-S	1	Linkage-Throttle
3	M-645016-S	4	Screw-HF	25	M-541050-S	1	Nut-HF
4	24 126 56-S	1	Bracket-Control	26	X-20-1-S	1	Washer-Lock
5	24 468 01-S	3	Washer-Plain				
6	24 090 07-S	1	Lever-Actuator, Throttle				
7	12 237 01-S	2	Clamp-Cable				
8	M-545016-S	3	Screw-HF				
9	24 090 03-S	1	Lever-Control, Throttle				
10	M-446030-S	1	Nut-HF				
11	M-401030-S	1	Screw-HF				
12	24 079 02-S	1	Linkage-Choke				
13	24 090 05-S	1	Lever-Choke				
14	41 468 03-S	1	Washer-Spring				
15	M-545020-S	1	Screw-HF				
16	24 089 51-S	1	Spring-Limiter, Throttle				
17	24 089 49-S	1	Spring-Governor				
18	24 211 03-S	1	Bolt				
19	24 090 33-S	1	Lever-Governor				
20	M-641060-S	1	Nut-HF				
21	25 158 11-S	1	Bushing-Retaining, Linkage				
22	24 089 01-S	1	Spring-Linkage				



Air Intake/Filtration Assembly Kohler Engine CH25S PS-68670

Ref. No.	Part No.	Qty.	Description
1	24 743 26-S	1	Kit-Air Cleaner, Heavy Duty (Incl. Ref. # 2-9, Decal 24 113 97-S, and Carburetor Kit 24 853 77-S)
2	M-645016-S	7	Screw-HF
3	24 029 28-S	1	Adapter-Intake, Air
4	24 041 38-S	1	Gasket-Adapter, Air Cleaner
5	24 029 35-S	1	Plate-Adapter
6	24 126 21-S	1	Bracket-Base, Air Cleaner
7	24 314 25-S	1	Shield-Debris
8	24 086 06-S	2	Screw-Head, Phillips
9	25 755 24-S	1	Kit-Gauge, Air Filter
10	M-651055-S	4	Screw-HF
11	24 164 14-S	1	Manifold-Intake
12	24 041 01-S	2	Gasket-Manifold, Intake
13	24 041 06-S	1	Gasket-Base, Air Cleaner
14	M-639016-S	3	Screw-HF
*	24 853 77-S	1	Kit-Carburetor w/ Gaskets

Ref. No.	Part No.	Qty.	Description
*	24 113 97-S	1	Decal-HP
*	25 113 27-S	1	Decal-Cleaner, Air

* Not illustrated

