



PART NO. 23-008-0081

INSTALLATION INSTRUCTIONS

2300 BRAKE KIT

(for WORKMAN™ 3000)

THIS KIT FITS TORO 2300 TOPDRESSER SERIAL NUMBERS 30381 AND ABOVE.

1. Remove the two bolts that attach the existing valve to the frame. Leave all hydraulic lines attached to the valve and allow the valve assembly to drop downward.
2. Release the air pressure from the tank.
3. Remove the plug from the valve as shown in Fig. 1. Screw in the electric solenoid with cartridge. Secure.
4. Secure the valve to the frame as it was before.
5. Plug the wire harness (01-606-0420) for the on/off switch into the back of the valve on the solenoid. Attach the valve to the frame using the existing 5/16" x 1" bolts. Secure tightly.
6. Make sure all fittings and hydraulic hoses are tight. If necessary, rotate the fittings to eliminate any binding of the hoses.

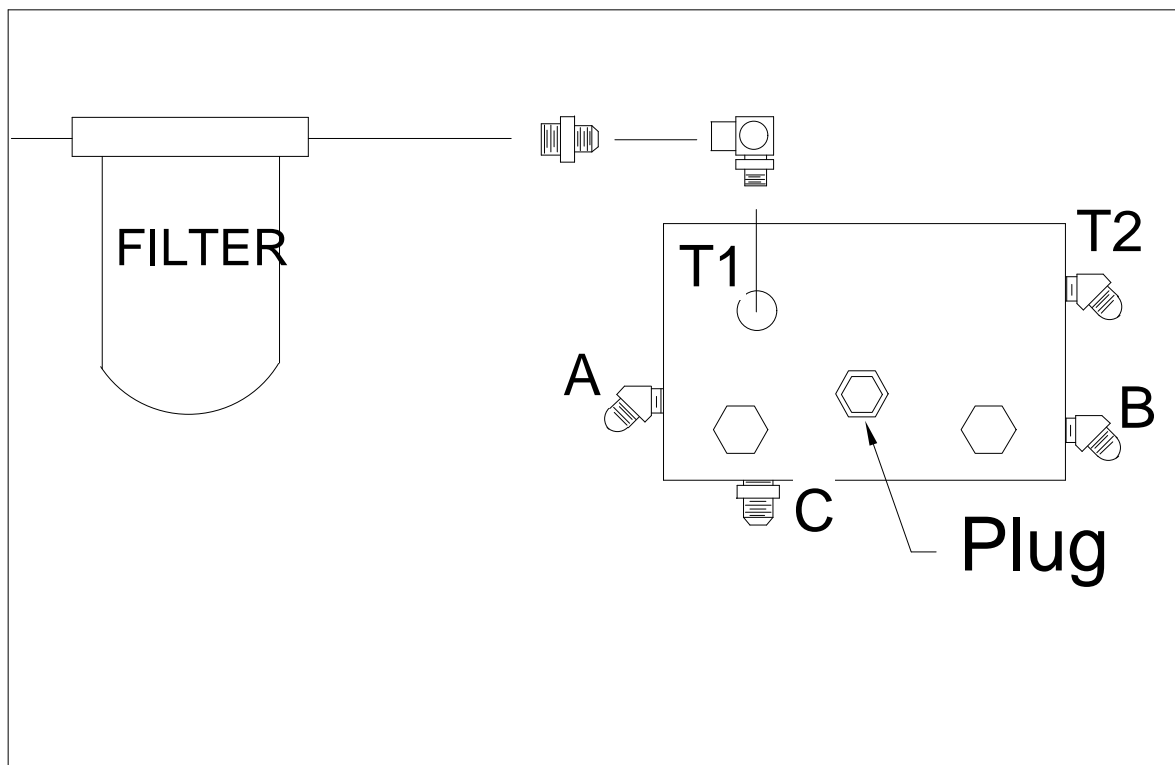


Figure 1

INSTALLATION INSTRUCTIONS (Continued)

7. Route the wire harness (01-606-0420) through the tongue on the Topdresser towards the rear of the Workman.

8. On the left hand side of the Workman, separate the harness going into the taillights as shown in Fig. 2.

9. Plug the wire harness (01-606-0410) into the harness as shown in Fig. 2. Plug the other end into the wire harness (01-606-0420) previously installed, that connects to the valve.

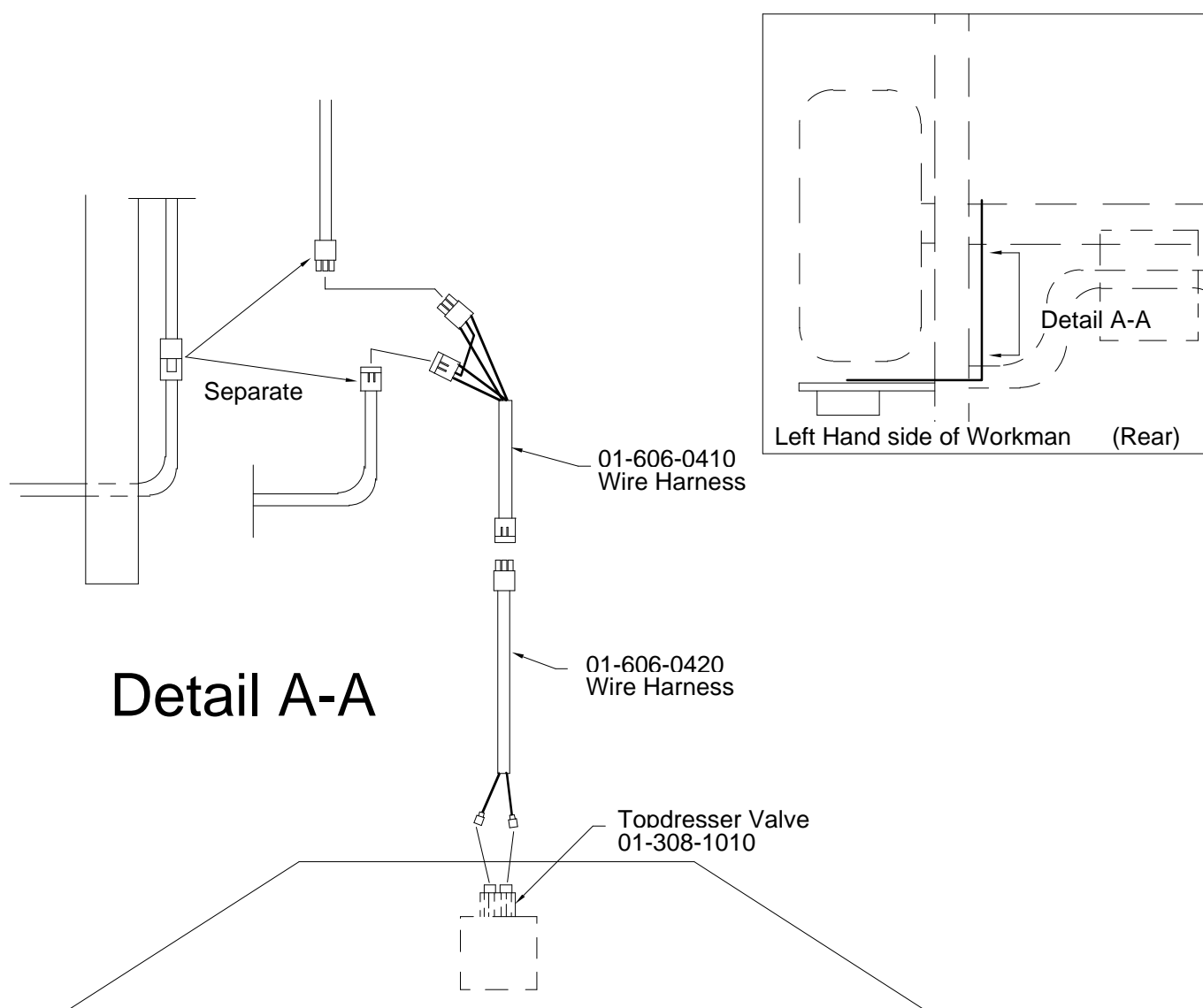


Figure 2