



PART NO. 56-008-2091

# INSTALLATION INSTRUCTIONS

## CLEAN OUT LID KIT

(For Plug Pulverizer 2560)

1. Remove or secure the rubber finger reel so the fingers will not interfere when cutting the access windows.
2. Locate and mark the access windows as shown in Fig. 1.
3. Drill (2) two holes in opposite corners of each access window marked. Make holes large enough to allow saw blade to move freely.
4. Cut out access windows with metal saw.

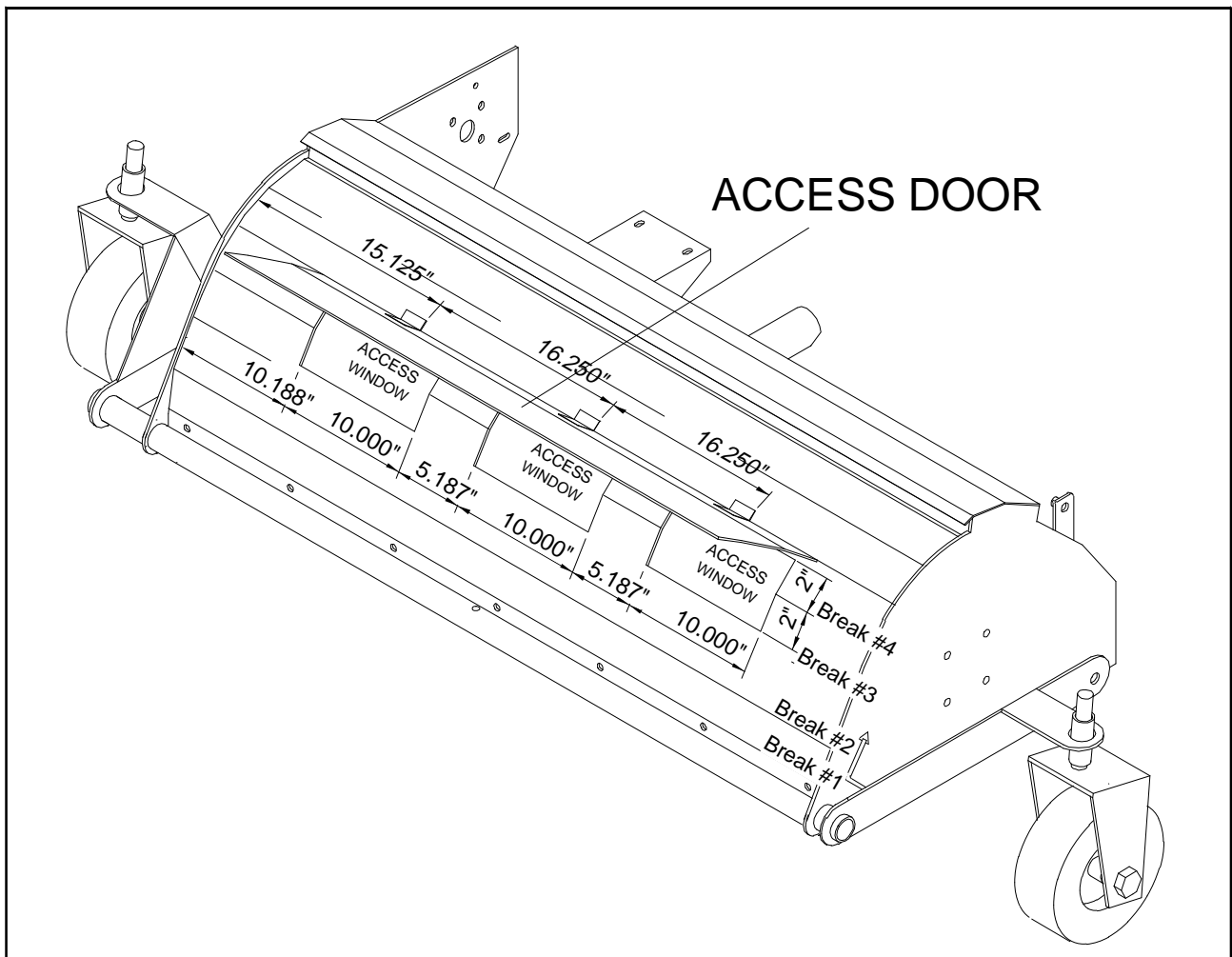


Figure 1

5. Remove sharp edges and burrs.

6. Place the door over the windows making sure the door covers all openings.
7. Weld door hinges to main frame.

8. Locate and drill (4) four .203 diameter holes and pop rivet rubber latches to main frame as shown in Fig.2.

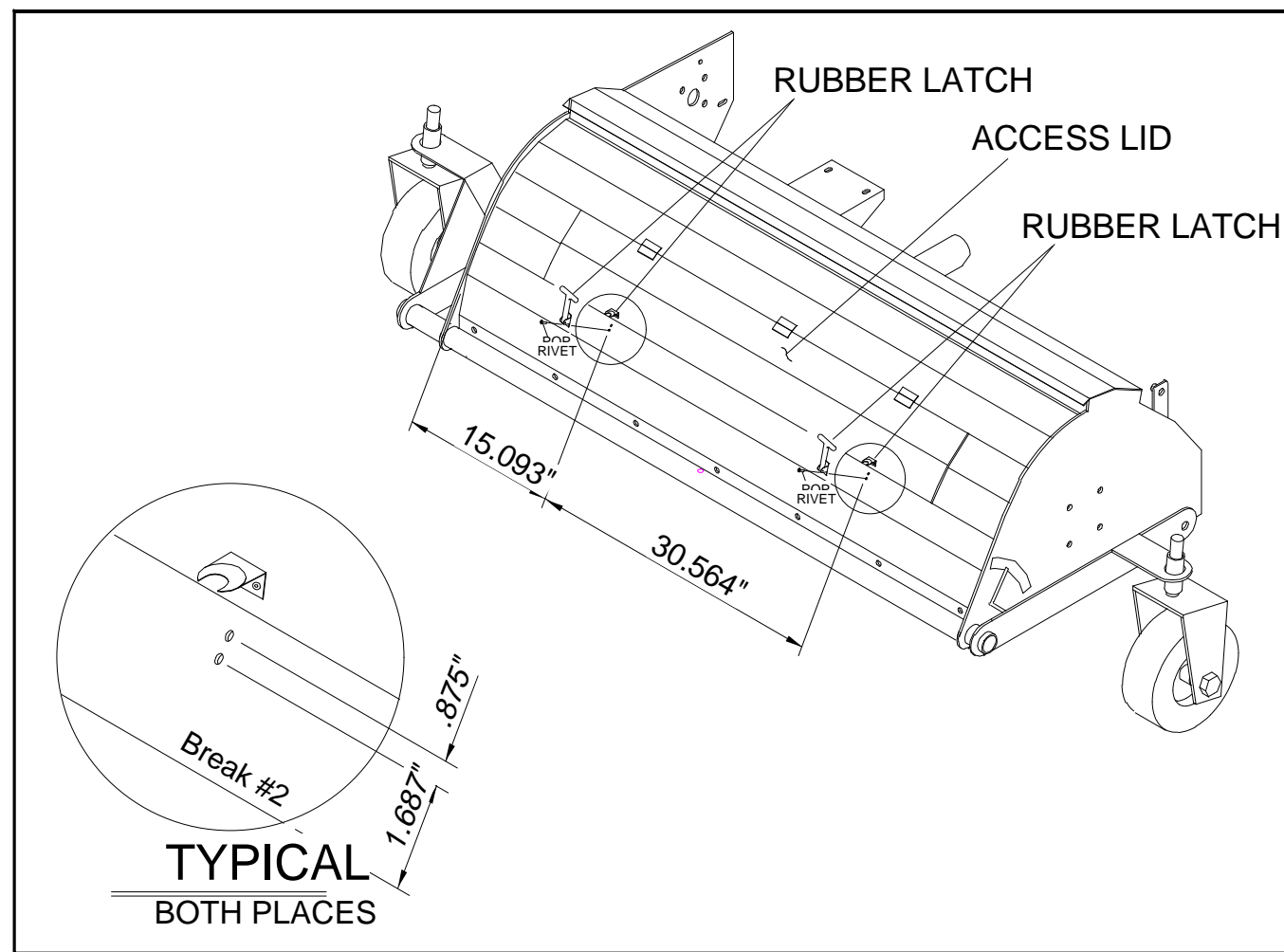


Figure 2

Part No.	Description	
56-005-3101	Clean Out Lid	1
01-270-1350	Latch	2
01-161-0060	Pop Rivet	8